

FIGURE 1. Net Heat flux (W m^{-2}) forcing for the ROMS model for the period from Nov 1 to Nov 15, 2008 before adjustment from assimilation of observations.

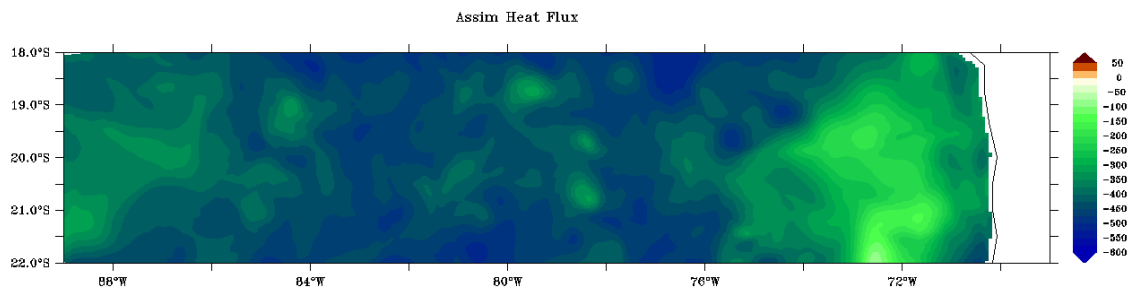


FIGURE 2. Net Heat flux (W m^{-2}) forcing for the ROMS model for the period from Nov 1 to Nov 15, 2008 after adjustment from assimilation of observations.

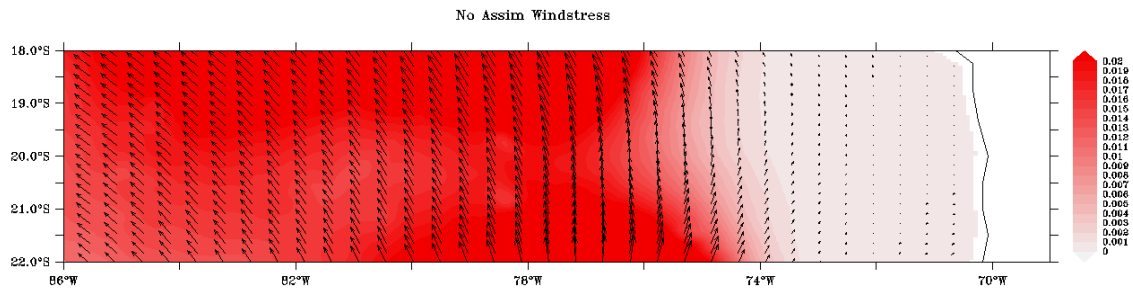


FIGURE 3. Windstress (N m^{-2}) forcing for the ROMS model for the period from Nov 1 to Nov 15, 2008 before adjustment from assimilation of observations.

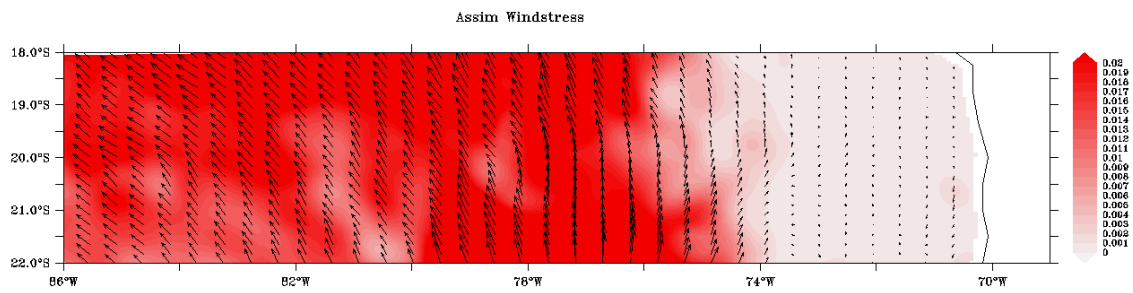


FIGURE 4. Windstress (N m^{-2}) forcing for the ROMS model for the period from Nov 1 to Nov 15, 2008 after adjustment from assimilation of observations.

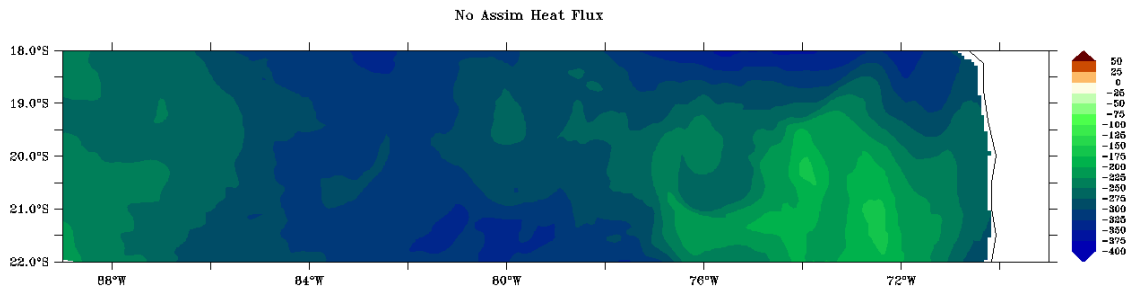


FIGURE 5. Net Heat flux (W m^{-2}) forcing for the ROMS model for the period from Nov 16 to Nov 30, 2008 before adjustment from assimilation of observations.

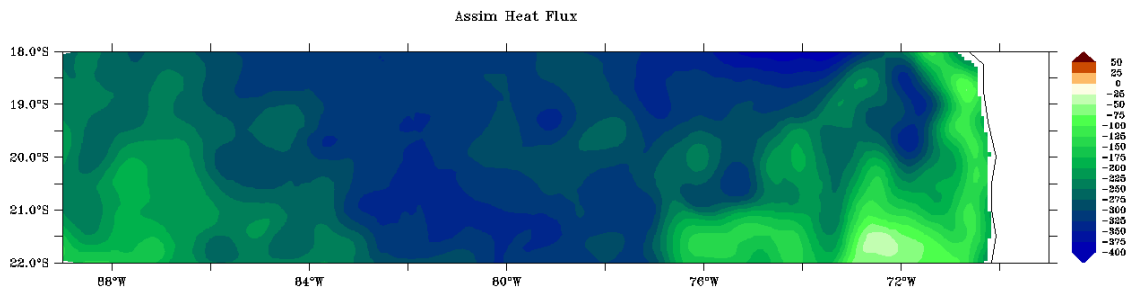


FIGURE 6. Net Heat flux (W m^{-2}) forcing for the ROMS model for the period from Nov 16 to Nov 30, 2008 after adjustment from assimilation of observations.

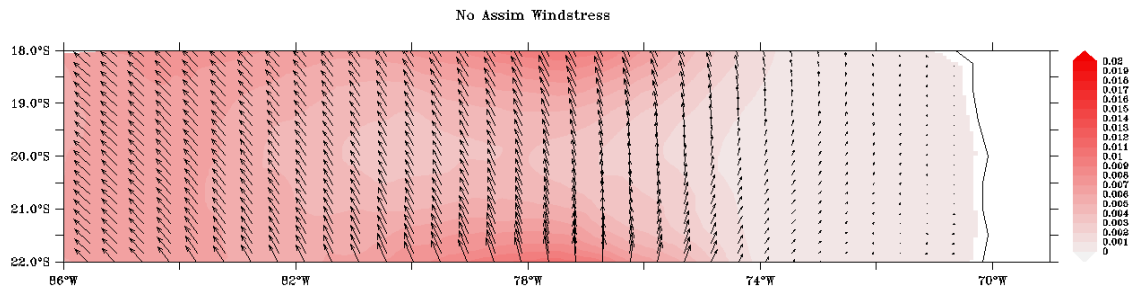


FIGURE 7. Windstress (N m^{-2}) forcing for the ROMS model for the period from Nov 16 to Nov 30, 2008 before adjustment from assimilation of observations.

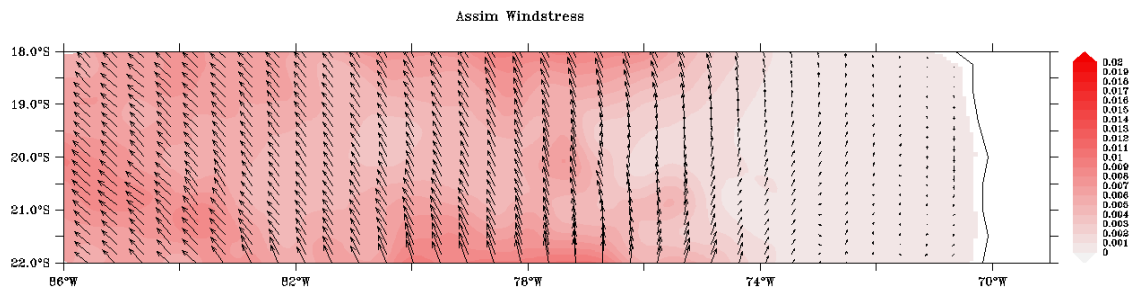


FIGURE 8. Windstress (N m^{-2}) forcing for the ROMS model for the period from Nov 16 to Nov 30, 2008 after adjustment from assimilation of observations.