

We would like to thank the referee for the thoughtful and insightful comments. Our responses are as following in blue

Title: Climatological perspectives of air transport from atmospheric boundary layer to tropopause layer over Asian monsoon regions during boreal summer inferred from Lagrangian approach (MS No: acp-2011-962)

Comments by Referee T.J. Schuck

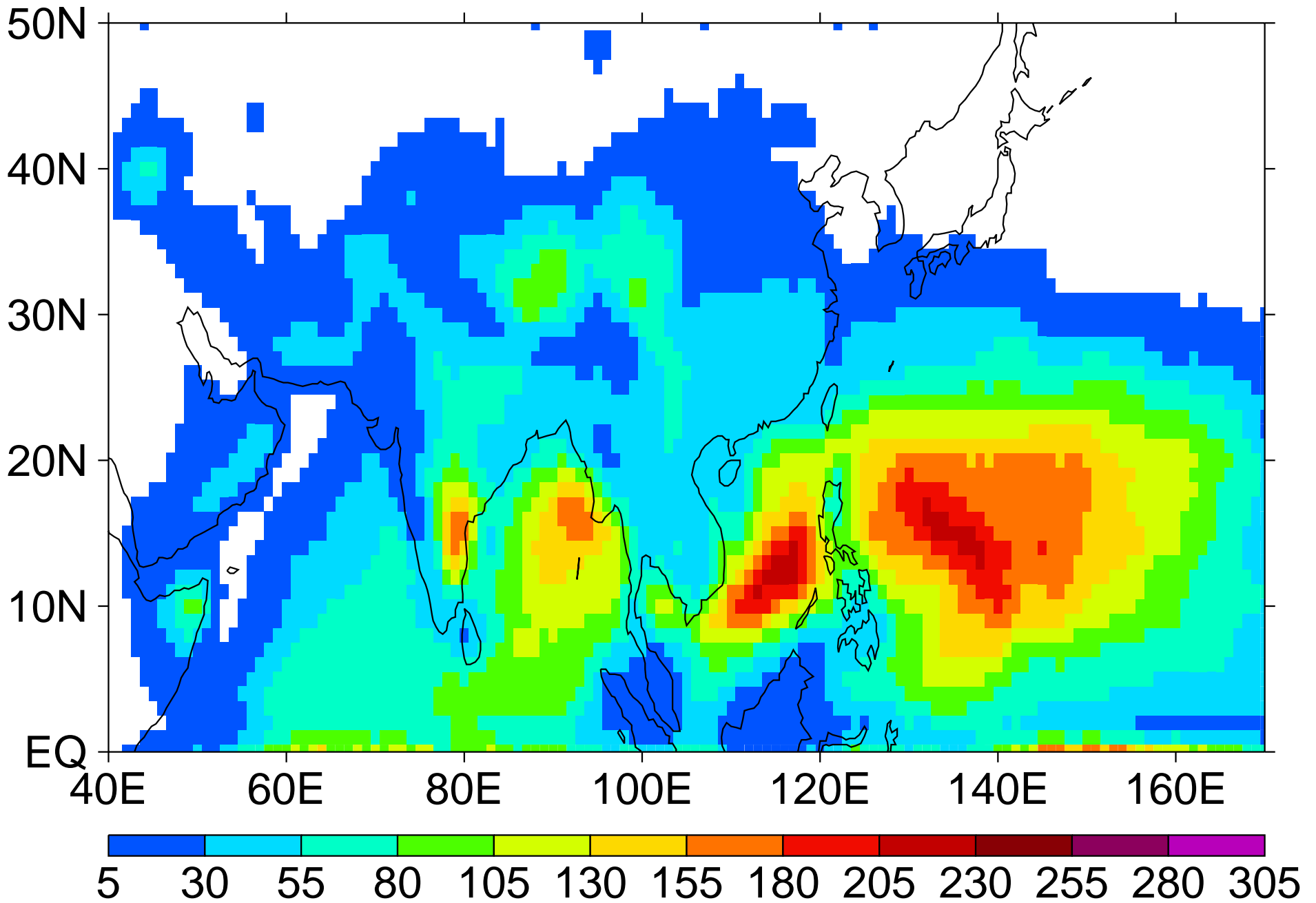
tanja.schuck@mpic.de

I think this is a very useful analysis for all studies dealing with the South Asian summer Monsoon. I'd suggest to provide more details about the analysis such as individual years' analyses as supplementary online material.

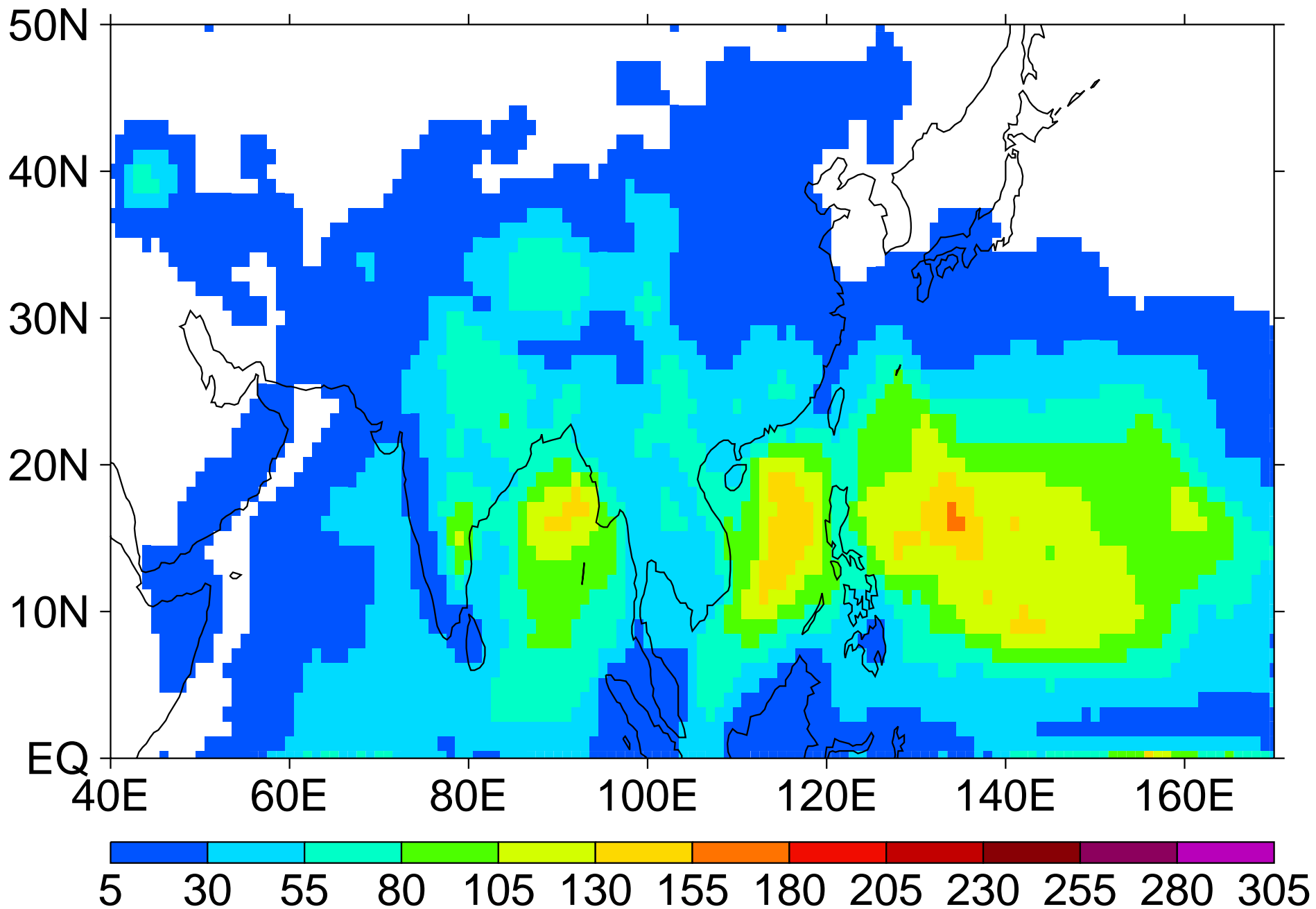
For example, Figure 10 shows the interannual variability, exemplary for the years 2002 and 2009. While the authors describe the differences as weak, they still are a very interesting feature. Therefore, it may be worthwhile to consider the presentation of more figures for individual years (such as extending Fig. 10 to the complete period discussed) in the form of a supplement to this manuscript.

Reply: As suggested, we provide following more figures for individual years' analyses as supplementary online material. Please kindly find the attachment.

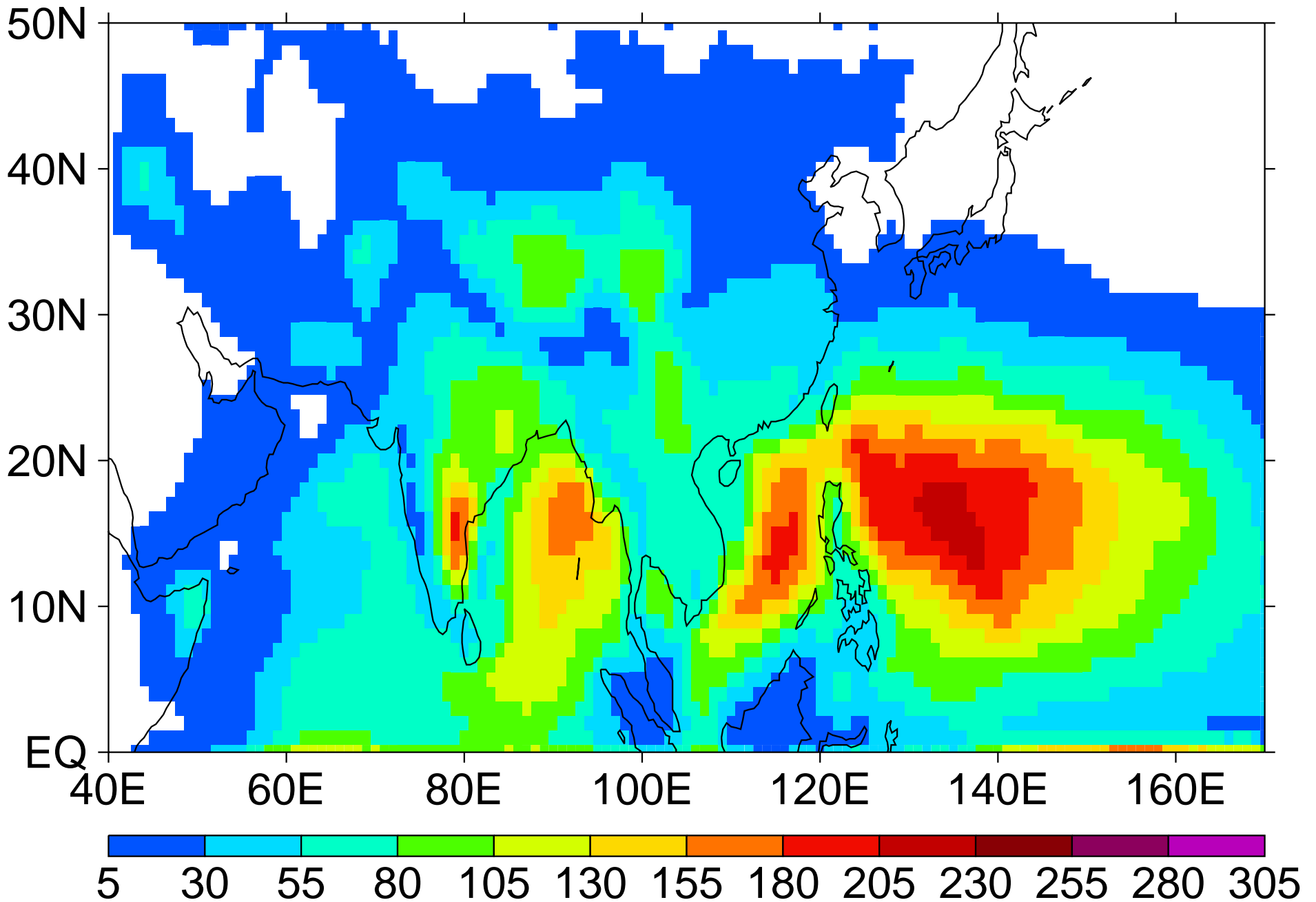
2001



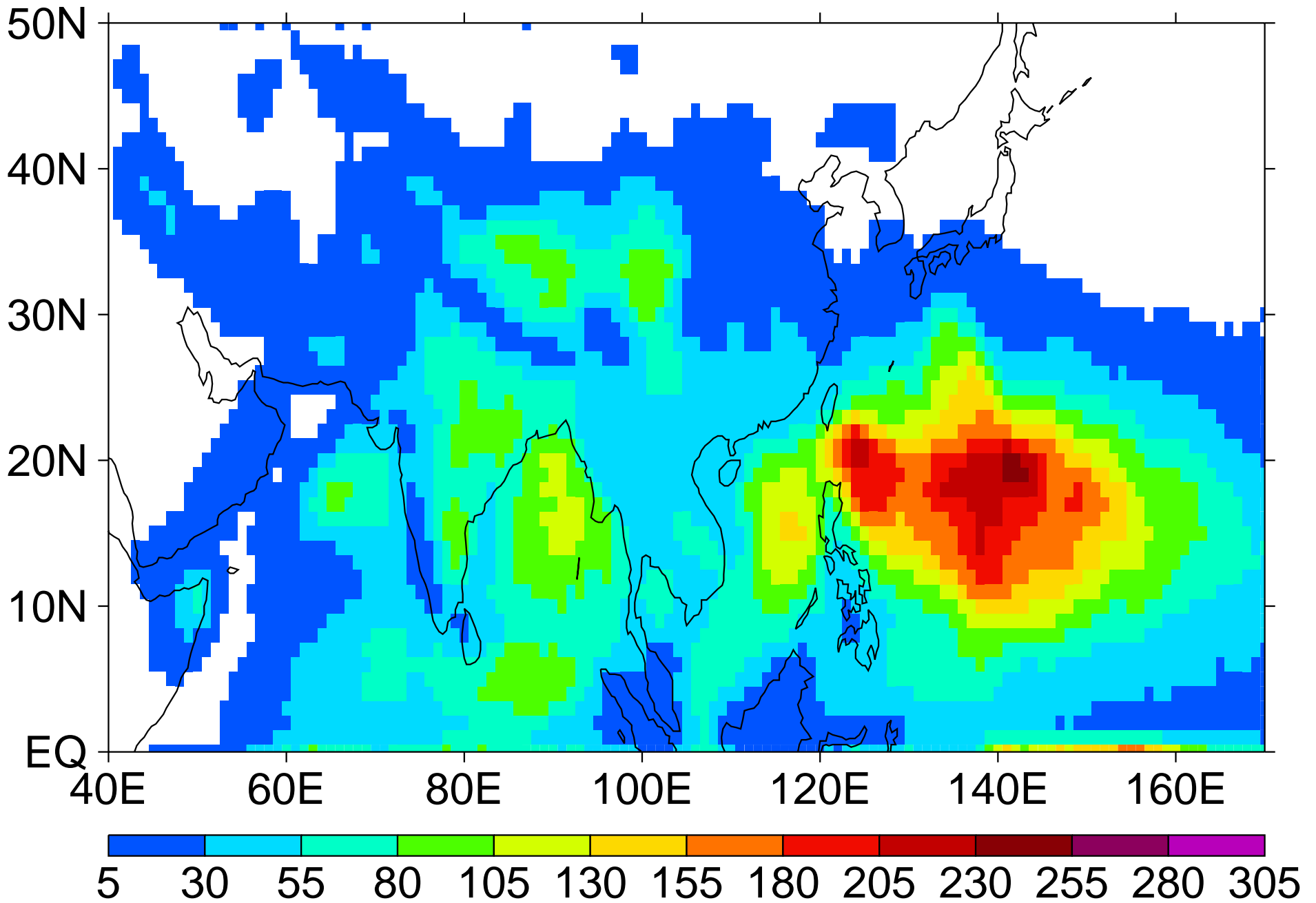
2002



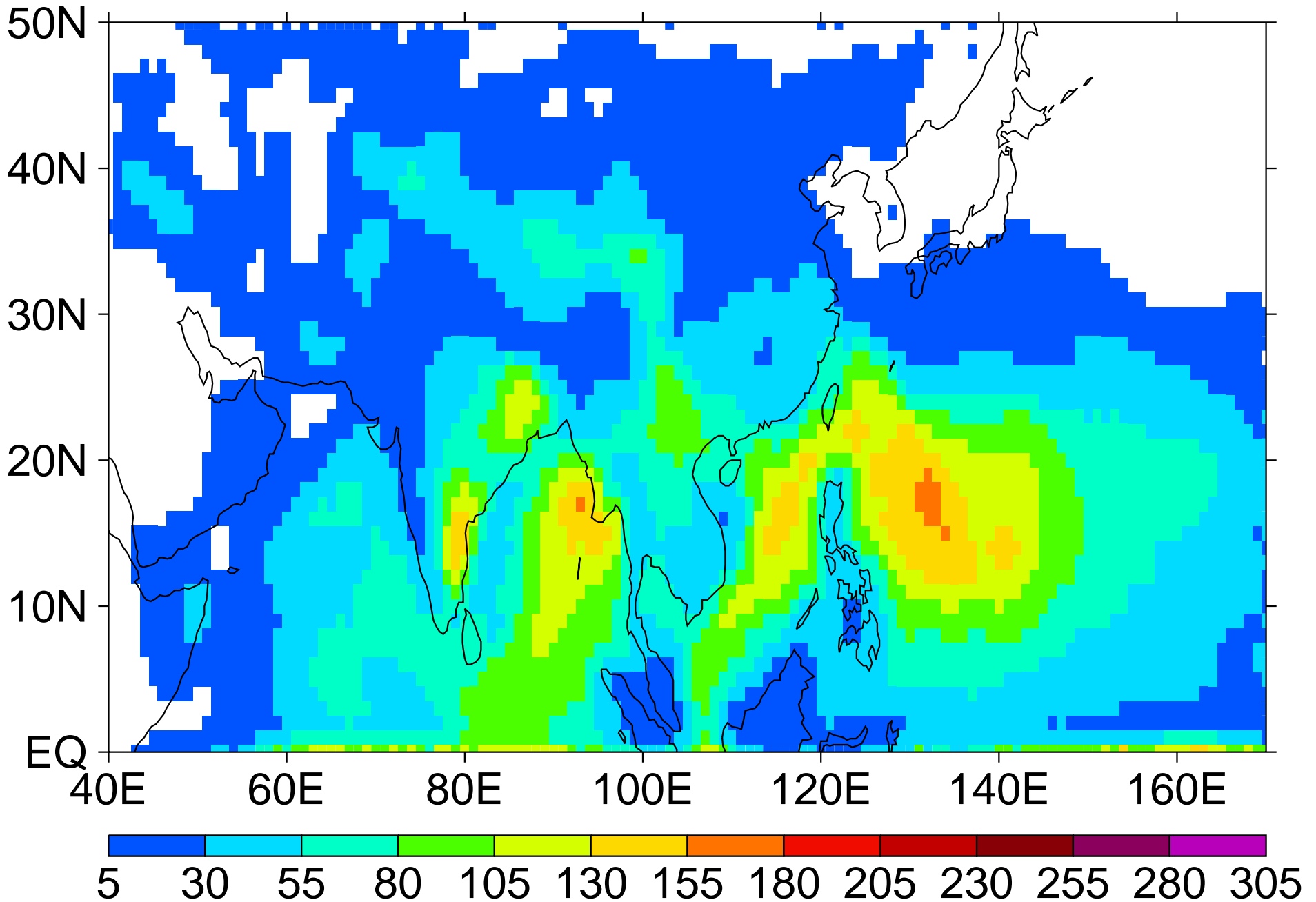
2003



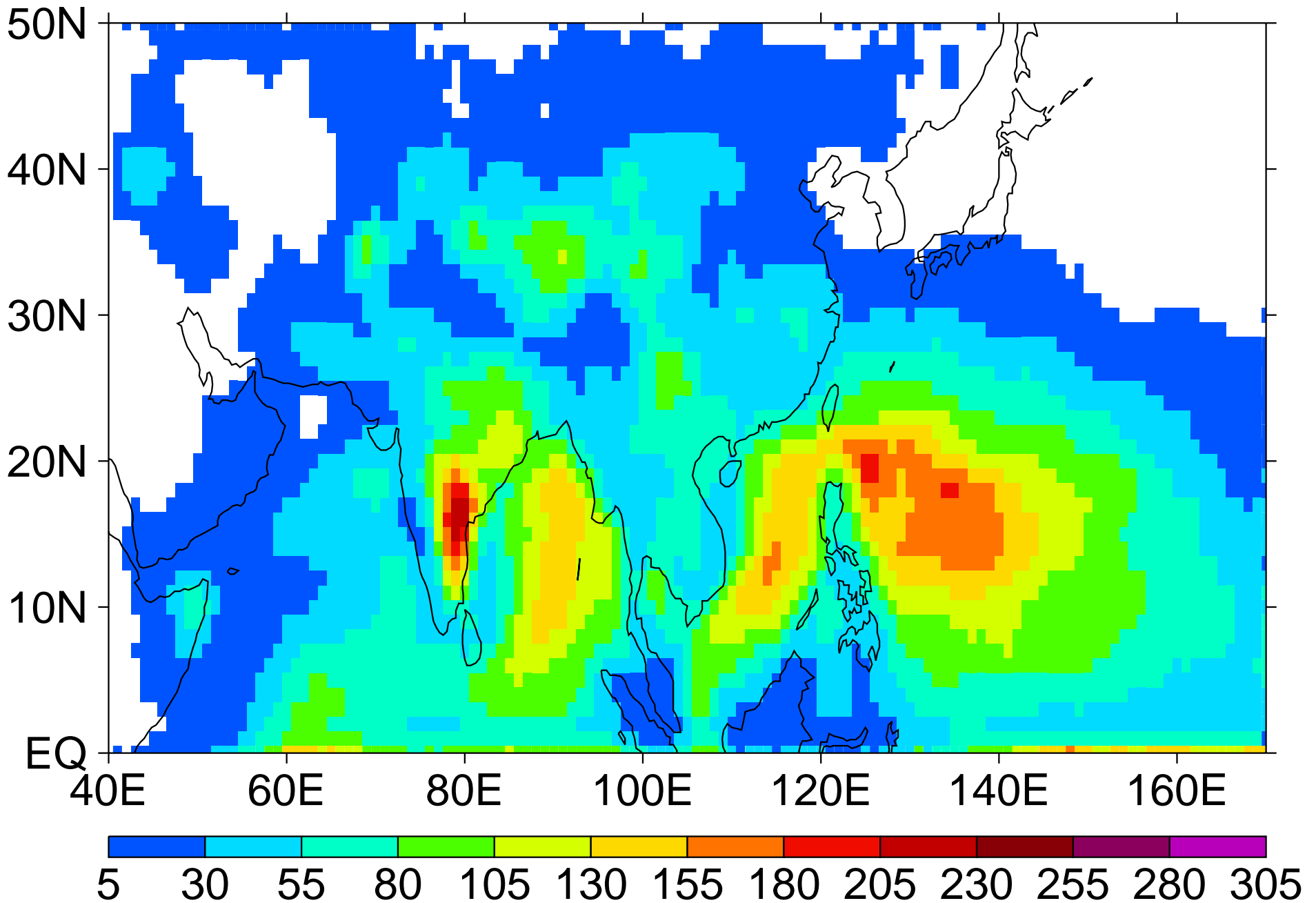
2004



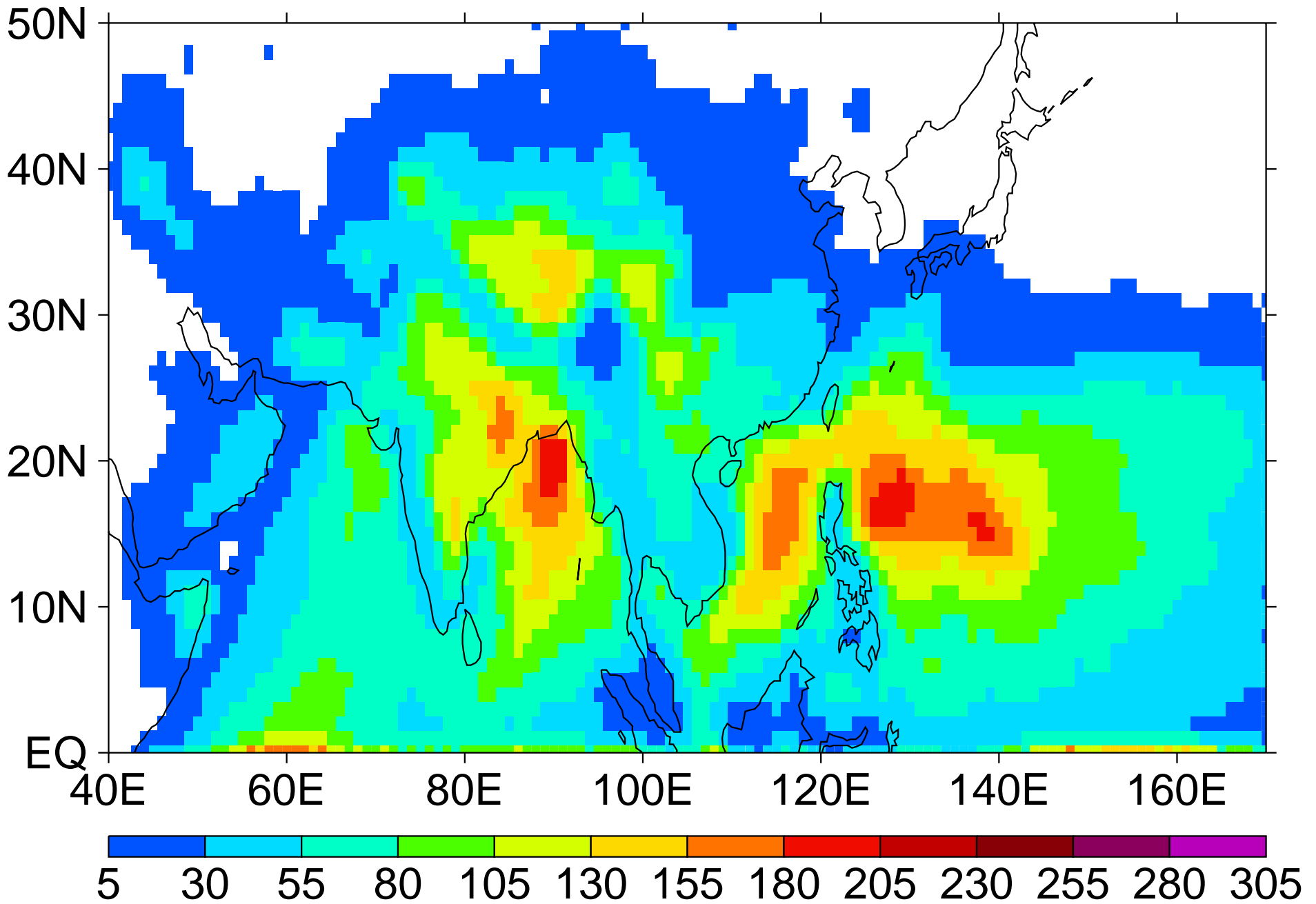
2005



2006

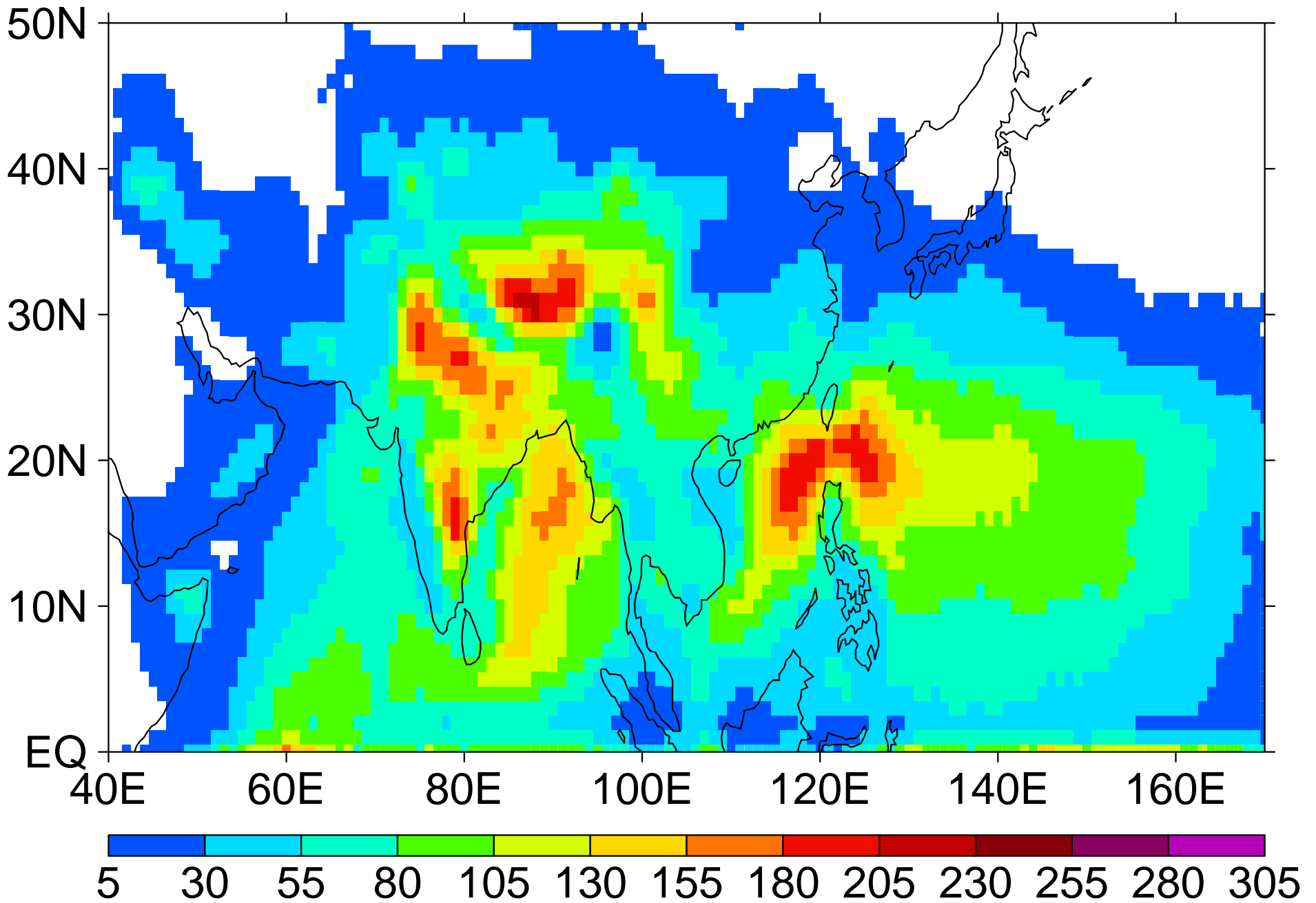


2007





2008



2009

