

Interactive
Comment

Interactive comment on “Central Arctic atmospheric summer conditions during the Arctic Summer Cloud Ocean Study (ASCOS): contrasting to previous expeditions” by M. Tjernström et al.

M. Tjernström et al.

michaelt@misu.su.se

Received and published: 11 May 2012

Please see the attached pdf

Please also note the supplement to this comment:

<http://www.atmos-chem-phys-discuss.net/12/C2474/2012/acpd-12-C2474-2012-supplement.pdf>

Interactive comment on Atmos. Chem. Phys. Discuss., 12, 4101, 2012.

Full Screen / Esc

Printer-friendly Version

Interactive Discussion

Discussion Paper

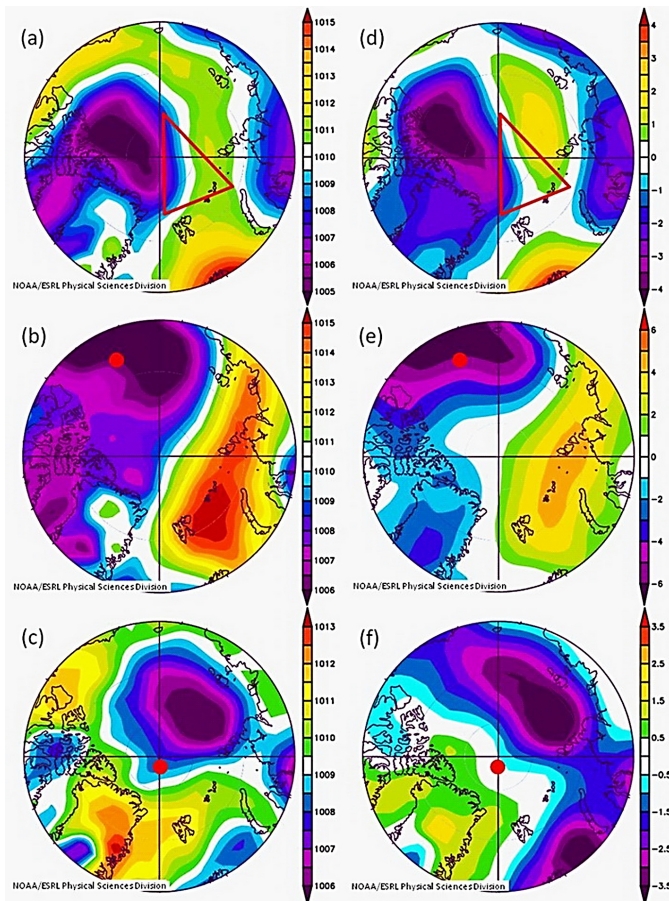


Fig. 1. Figure 7. Same as Fig. 4, but for the (a-c) mean sea-level pressure and its (d-f) anomaly for the (a, d) AOE-96, (b, e) SHEBA and (c, f) AOE-2001 field experiments.

[Full Screen / Esc](#)[Printer-friendly Version](#)[Interactive Discussion](#)[Discussion Paper](#)

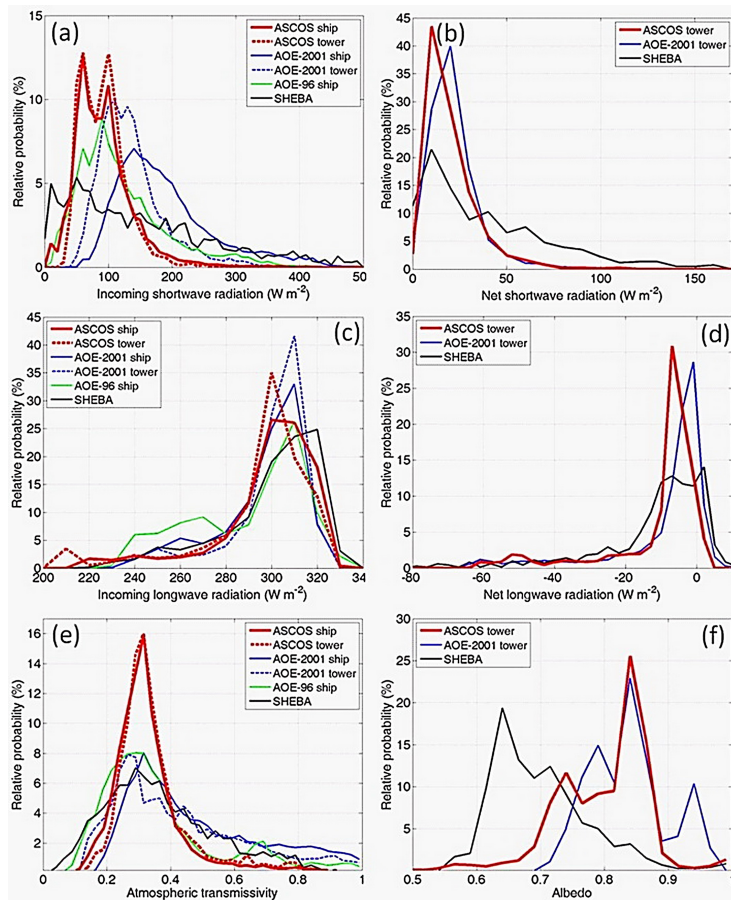
Interactive
Comment

Fig. 2. Probability of (a, c) incoming and (b, d) net, (a, b) shortwave and (c, d) longwave radiation in $W m^{-2}$, and (e) atmospheric transmissivity and (f) surface albedo, from the ASCOS, AOE-2001, A