

This discussion paper is/has been under review for the journal Atmospheric Chemistry and Physics (ACP). Please refer to the corresponding final paper in ACP if available.

# Heterogeneous ice nucleation on phase-separated organic-sulfate particles: effect of liquid vs. glassy coatings

G. P. Schill<sup>1,2</sup> and M. A. Tolbert<sup>1,2</sup>

<sup>1</sup>Cooperative Institute for Research in Environmental Sciences, University of Colorado, Boulder, Colorado, USA

<sup>2</sup>Department of Chemistry and Biochemistry, University of Colorado, Boulder, Colorado, USA

Received: 16 November 2012 – Accepted: 22 November 2012 – Published: 3 December 2012

Correspondence to: G. P. Schill (gregory.schill@colorado.edu) and M. A. Tolbert (tolbert@colorado.edu)

Published by Copernicus Publications on behalf of the European Geosciences Union.

## Ice nucleation on phase-separated particles

G. P. Schill and  
M. A. Tolbert

Title Page

Abstract

Introduction

Conclusions

References

Tables

Figures

⏪

⏩

◀

▶

Back

Close

Full Screen / Esc

Printer-friendly Version

Interactive Discussion

## Abstract

Atmospheric ice nucleation on aerosol particles relevant to cirrus clouds remains one of the least understood processes in the atmosphere. Upper tropospheric aerosols as well as sub-visible cirrus residues are known to be enhanced in both sulfates and organics. The hygroscopic phase transitions of organic-sulfate particles can have an impact on both the cirrus cloud formation mechanism and resulting cloud microphysical properties. In addition to deliquescence and efflorescence, organic-sulfate particles are known to undergo another phase transition known as liquid-liquid phase separation. The ice nucleation properties of particles that have undergone liquid-liquid phase separation are unknown.

Here, Raman microscopy coupled with an environmental cell was used to study the low temperature deliquescence, efflorescence, and liquid-liquid phase separation behavior of 2 : 1 mixtures of organic polyols (1,2,6-hexanetriol, and 1 : 1 1,2,6-hexanetriol +2,2,6,6-tetrakis(hydroxymethyl)cyclohexanol) and ammonium sulfate from 240–265 K. Further, the ice nucleation efficiency of these organic-sulfate systems after liquid-liquid phase separation and efflorescence was investigated from 210–235 K. Raman mapping and volume-geometry analysis indicates that these particles contain solid ammonium sulfate cores fully engulfed in organic shells. For the ice nucleation experiments, we find that if the organic coatings are liquid, water vapor diffuses through the shell and ice nucleates on the ammonium sulfate core. In this case, the coatings minimally affect the ice nucleation efficiency of ammonium sulfate. In contrast, if the coatings become semi-solid or glassy, ice instead nucleates on the organic shell. Consistent with recent findings that glasses can be efficient ice nuclei, the phase separated particles are nearly as efficient at ice nucleation as pure crystalline ammonium sulfate.

### Ice nucleation on phase-separated particles

G. P. Schill and  
M. A. Tolbert

Title Page

Abstract

Introduction

Conclusions

References

Tables

Figures



Back

Close

Full Screen / Esc

Printer-friendly Version

Interactive Discussion



## 1 Introduction

Cirrus clouds are ubiquitous in the upper troposphere and are known to have a large effect on the Earth's climate. For example, it has been shown that sub-visible cirrus clouds are present in the tropical tropopause layer (TTL) 50–80 % of the time (Jensen et al., 2010). These clouds are of atmospheric importance because they can dehydrate air ascending through the TTL and, therefore, effectively regulate stratospheric humidity. Despite their ubiquity in the upper troposphere, ice cloud formation remains one of the least understood processes in the atmosphere and one of the largest uncertainties in the prediction of climate change (Forster, 2007). This is in large part due to the fact that particles available for ice nucleation are complex and that ice number concentrations are low ( $\sim 1$  in  $10^5$  particles in the upper troposphere nucleate ice, Rogers et al., 2001), making in-situ measurements difficult. Recently, single particle measurements in the upper troposphere have shown that background aerosols as well as sub-visible residue are enhanced in sulfates and organics and have little aerosol typically assumed to be excellent ice nuclei (IN), like mineral dust (Froyd et al., 2009, 2010). Furthermore, it was shown that the average organic fraction of these particles ranged from 30–80 % by mass in the convective region as well as the TTL (Froyd et al., 2009). These measurements, however, do not provide any information about the phase state and/or the distribution of chemicals within these organic-sulfate particles. Thus, the identity of the ice nuclei in this region of the atmosphere is still uncertain.

The hygroscopic phase transitions of organic-sulfate aerosol can influence the ice nucleation mechanism. If the particles are in an aqueous liquid phase, they are expected to nucleate ice homogeneously. Here, a critical ice germ is formed within the aqueous matrix of a supercooled liquid droplet. Homogeneous nucleation has been studied extensively in the past and has been well parameterized (Koop et al., 2000). Conversely, if the organic-sulfate particles are crystalline or amorphous solids, then they can act as heterogeneous ice nuclei. Here a foreign surface acts as a catalyst for ice germ formation. Previously, it was thought that homogeneous nucleation dominated

### Ice nucleation on phase-separated particles

G. P. Schill and  
M. A. Tolbert

Title Page

Abstract

Introduction

Conclusions

References

Tables

Figures



Back

Close

Full Screen / Esc

Printer-friendly Version

Interactive Discussion

cirrus cloud formation; however, combined field (Lawson et al., 2008; Kramer et al., 2009) and modeling studies (Jensen et al., 2010) have indicated that ice number and ice size distributions in the upper troposphere are sometimes better explained by heterogeneous nucleation.

5 Recently, it has been shown that mixed organic-sulfate particles can undergo another hygroscopic phase transition termed liquid-liquid phase separation (LLPS) (Marcolli and Krieger, 2006; Ciobanu et al., 2009). Here the inorganic component ammonium sulfate effectively salts out the less soluble organic components. Bertram et al. (2011) have shown that if the organic component of mixed organic-sulfate particles has an  
10 O:C ratio  $< 0.7$ , then it will generally phase separate; moreover, it has been shown that complex organic-sulfate particles consisting of three separate dicarboxylic acids will always phase separate, as long as their combined O:C ratio is  $< 0.7$  (Song et al., 2012). LLPS has also been observed with real-world organic-sulfate particles collected in the Atlanta, GA region (You et al., 2012). Finally, it has been shown that particles that  
15 have undergone LLPS minimally affect the deliquescence and efflorescence behavior of ammonium sulfate (Bertram et al., 2011; Smith et al., 2011).

Past work has shown that phase-separated particles containing two liquids can assume a number of partially engulfed morphologies (Kwamena et al., 2010; Reid et al., 2011). However, mixed organic-sulfate particles that have undergone LLPS and subsequently effloresce appear, from 2-D projections, to assume a fully engulfed core-shell morphology, with an evenly thick organic coating and a crystalline ammonium sulfate core (Ciobanu et al., 2009; Bertram et al., 2011; Song et al., 2012). There have been many studies looking at the effects of organic coatings on the efficiency of ice nucleation. Mohler et al. (2008) found that coating Arizona test dust (ATD) and illite  
20 dust particles with secondary organic material (SOM) produced by the ozonolysis of  $\alpha$ -pinene required a higher supersaturation to nucleate ice than for the bare dust particles at temperatures between 205 and 210 K. Koehler et al. (2010) observed similar results for coating ATD particles with SOM from the ozonolysis of  $\alpha$ -pinene for temperatures between 218 and 233 K. In contrast, Wise et al. (2010) have shown that coating  
25

## Ice nucleation on phase-separated particles

G. P. Schill and  
M. A. Tolbert

[Title Page](#)[Abstract](#)[Introduction](#)[Conclusions](#)[References](#)[Tables](#)[Figures](#)[⏪](#)[⏩](#)[◀](#)[▶](#)[Back](#)[Close](#)[Full Screen / Esc](#)[Printer-friendly Version](#)[Interactive Discussion](#)

ammonium sulfate with palmitic acid minimally affected the ice nucleation efficacy of bare ammonium sulfate over a similar temperatures range to Koehler et al. (2010). Raman analysis of these particles, however, revealed that this behavior could be attributed to uneven coating by the organic material. Thus, partial coatings are shown to minimally affect the ice nucleation behavior of their cores; it is not clear, however, if full liquid organic coatings would inhibit ice nucleation by ammonium sulfate.

Generally, ambient organic material has been anti-correlated with ice nucleation efficacy (Cziczo et al., 2004; Baustian et al., 2012a); some crystalline subsets, however, of organic aerosol may very well be efficient ice nuclei (Zobrist et al., 2006; Kanji et al., 2008; Schill and Tolbert, 2012). Real organic aerosol will most likely be composed of thousands to hundreds of thousands of species (Goldstein and Galbally, 2007), and be in a liquid, not crystalline state (Marcolli et al., 2004). Recently, there has been evidence that organic aerosol may in some cases be in a semi-solid or solid amorphous state such as rubbers, gels, or glasses (Zobrist et al., 2008; Mikhailov et al., 2009; Koop et al., 2011). The work of Murray and coworkers has shown that, in general, highly oxygenated glassy organic aerosols are good heterogeneous ice nuclei, and can heterogeneously nucleate ice up to temperatures as high 218.5 K (Murray et al., 2010; Wilson et al., 2012). Further, the work of Knopf and coworkers suggests that chamber generated SOM can heterogeneously nucleate ice to temperatures as high as 240 K (Wang et al., 2012a) and that glassy organic coatings may be responsible for the efficient nucleation of ice by ambient particles collected in Mexico City and the Los Angeles Region (Wang et al., 2012b). Laboratory work in our group has shown glassy sugars are excellent depositional ice nucleators (Baustian et al., 2012b). These combined works suggest that (semi-)solid amorphous organic coatings may enhance, not deactivate, the ice nucleation ability of phase-separated particles.

In the present work, we studied the low temperature deliquescence, liquid-liquid phase separation, and efflorescence behavior of mixed organic-sulfate particles using 1,2,6-hexanetriol or an equal mass ratio of 1,2,6-hexanetriol/2,2,6,6-tetrakis(hydroxymethyl) cyclohexanol as the organic species. Additionally, we studied

## Ice nucleation on phase-separated particles

G. P. Schill and  
M. A. Tolbert

[Title Page](#)[Abstract](#)[Introduction](#)[Conclusions](#)[References](#)[Tables](#)[Figures](#)[Back](#)[Close](#)[Full Screen / Esc](#)[Printer-friendly Version](#)[Interactive Discussion](#)

the heterogeneous ice nucleation behavior of the pure organics and mixed organic-sulfate particles to help elucidate the role of phase-separated particles in ice cloud formation.

## 2 Experimental

### 2.1 Sample preparation

Aqueous solutions containing organics and organic-sulfate mixtures were prepared by dissolving pure substances in high purity water. Pure 1,2,6-hexanetriol (C6, molecular weight = 134.17 g mol<sup>-1</sup>) was made as a 1 % solution. C6 was chosen because it has been previously shown to phase separate at 273 K for various organic-to-sulfate ratios (Bertram et al., 2011) and the conditions under which it forms a glass have been quantified (Zobrist et al., 2008). The other pure organic system consisted of a 1 : 1 mixture of C6 and 2,2,6,6-tetrakis(hydroxymethyl) cyclohexanol (C10, molecular weight = 220.26 g mol<sup>-1</sup>, melting point = 123–127 °C), and was also made as a 1 % solution. C10 was chosen because the conditions under which it forms a glass are also known (Zobrist et al., 2008). Further, C10 was chosen to act as a vitrifier in the C6/C10 system because of its high molecular weight and high glass transition temperature ( $T_g$ , 258.6 ± 5.2 K) in relation to C6 ( $T_g$  = 193.5 ± 1.3). Each of these organic systems was also mixed with ammonium sulfate (AS) in a 2 : 1 organic-to-sulfate ratio. It should be noted that the O : C ratio of pure C6 as well as the C6/C10 mixture was 0.5.

### 2.2 Raman microscopy and environmental cell

A schematic of the experimental system used to probe deliquescence, liquid-liquid phase separation, efflorescence, and ice nucleation is shown in Fig. 1. This system has been described in detail previously (Baustian et al., 2010; Wise et al., 2010). Briefly, a Nicolet Almega XR Dispersive Raman spectrometer has been outfitted with a Linkham THMS600 environmental cell and a Buck Research CR-1A chilled-mirror

## Ice nucleation on phase-separated particles

G. P. Schill and  
M. A. Tolbert

Title Page

Abstract

Introduction

Conclusions

References

Tables

Figures

⏪

⏩

◀

▶

Back

Close

Full Screen / Esc

Printer-friendly Version

Interactive Discussion



hygrometer. Coupled to the spectrometer is an Olympus BX51 research grade optical microscope with 10×, 50×, and 100× magnification abilities.

Particles were deposited and viewed on a hydrophobically treated quartz disc (1 mm thick). To generate particles, a solution sample was aspirated into a Meinhard TR-50 glass concentric nebulizer. Nebulized droplets were directed at the quartz disc and allowed to coagulate into supermicron droplets. The sample disc was then transferred into the environmental cell and exposed to a low humidity environment. This evaporated the water mixture, resulting in organic/AS droplets ranging from 1 to 40 μm in lateral diameter.

The temperature ( $T$ ) of the particles was controlled with a Linkham TMS94 automated temperature controller. The temperature controller was calibrated against the melting point of ice, the deliquescence relative humidity (DRH) of NaCl, and the ferroelectric phase transition of ammonium sulfate as described by Baustian et al. (2010), which yielded an uncertainty in  $T$  of  $< \pm 0.2$  K. Water vapor inside the cell was controlled by continuously flowing dry and humidified  $N_2$ . At the exit of the cell, the CR-1A hygrometer measures dew point with an accuracy of  $\pm 0.15$  K. The relative humidity with respect to water and ice experienced by the particles was derived from  $T$  and the dew point employing the parameterizations of Murphy and Koop (2005). A gast mechanical diaphragm pump ensured that the flow through the system was kept constant at  $1 \text{ l min}^{-1}$ .

In the present study, both individual Raman spectra and spectral maps were acquired on a point-by-point manner. A frequency-doubled Nd:YAG laser operating at 532 nm was used for molecular excitation. Spectra were obtained using 50× and 100× objectives which have diffraction limited spot sizes of 1.3 and 1.1 μm, respectively (Everall, 2010). Spectra were collected from  $150\text{--}4000 \text{ cm}^{-1}$ , with a typical spectral resolution of  $\sim 2\text{--}4 \text{ cm}^{-1}$ . Raman mapping was utilized to gather information about the spatial distribution of chemicals within individual particles. Raman line and 2-D maps were acquired by taking a spectrum every 1 μm in the  $y$  and  $xy$  directions, respectively.

## Ice nucleation on phase-separated particles

G. P. Schill and  
M. A. Tolbert

Title Page

Abstract

Introduction

Conclusions

References

Tables

Figures

⏪

⏩

◀

▶

Back

Close

Full Screen / Esc

Printer-friendly Version

Interactive Discussion



An automated mapping program and high-precision motorized stage ensured accurate particle mapping.

### 2.3 Deliquescence, liquid-liquid phase separation, and efflorescence experiments

5 A typical deliquescence experiment was started by exposing the particles to  $\sim 0\%$  relative humidity (RH) at 298 K for at least 10 min to ensure that all particles were effloresced and completely dry. In each experiment, a collection of 10 to 20 random particles were monitored visually under  $50\times$  magnification using the video output from a CCD camera mounted on the optical microscope. The relative humidity experienced  
10 by the particles in the environmental cell was controlled by keeping a constant dew point and steadily decreasing  $T$ . Specifically, after the dew point was stable for 10 min,  $T$  was decreased at a rate of  $10\text{ Kmin}^{-1}$  from room temperature until  $\text{RH} \approx 60\%$ ; the sample was then cooled at a rate of  $0.1\text{ Kmin}^{-1}$ , corresponding to a change in RH of approximately  $0.6\% \text{ min}^{-1}$ , until deliquescence was observed visually. An example  
15 of a deliquesced particle is shown in Fig. 2. Raman spectroscopy was used to verify deliquescence had occurred. Spectra were taken at the center and edge of particles to ensure that the particles were well-mixed. Typical spectra of a deliquesced C6/AS particle can be seen in Fig. 2a, b. The main features of the spectrum are a sharp peak at  $972\text{ cm}^{-1}$  (due to the symmetric stretching mode of  $\text{SO}_4^{2-}$ ), a broad band centered at  
20  $2900\text{ cm}^{-1}$  (due to the C-H stretching vibrations of C6), and a broad band centered at  $3400\text{ cm}^{-1}$  (due to the the symmetric and anti-symmetric O-H stretching modes of liquid water). The spectra taken at the center and edge of the particle are nearly identical, verifying that the particle is one homogeneous aqueous phase.

25 Liquid-liquid phase separation experiments started from deliquesced particles. The sample was warmed at a rate of  $0.1\text{ Kmin}^{-1}$  until liquid-liquid phase separation occurred. Initial phase separation occurred in the form of schlieren (Ciobanu et al., 2009), which eventually diffused into each other and coalesced to form two distinct phases.

## Ice nucleation on phase-separated particles

G. P. Schill and  
M. A. Tolbert

Title Page

Abstract

Introduction

Conclusions

References

Tables

Figures

⏪

⏩

◀

▶

Back

Close

Full Screen / Esc

Printer-friendly Version

Interactive Discussion



## Ice nucleation on phase-separated particles

G. P. Schill and  
M. A. Tolbert

[Title Page](#)[Abstract](#)[Introduction](#)[Conclusions](#)[References](#)[Tables](#)[Figures](#)[Back](#)[Close](#)[Full Screen / Esc](#)[Printer-friendly Version](#)[Interactive Discussion](#)

Raman spectroscopy was utilized to verify spectrally that the two distinct phases had formed. An image of a phase-separated particle and its subsequent spectra can be seen in Fig. 2c, d. As shown, the inside phase is enhanced in ammonia, sulfate, and water peaks, while the outside phase is enriched in organic peaks. After two distinct phases had formed and were verified spectrally, the sample was cooled at a rate of  $0.1 \text{ K min}^{-1}$  to determine the separation relative humidity by increasing the RH. These particles then underwent similar visual and spectral analysis to ensure that the particle had merged back into one aqueous phase.

Finally, efflorescence experiments were conducted on particles that had already undergone deliquescence and LLPS. Again, the particles were warmed at a rate of  $0.1 \text{ K min}^{-1}$  until efflorescence was observed visually and verified spectrally (Fig. 2e, f). Inside/outside spectra were taken to ensure that the particles remained in a core-shell configuration after efflorescence. An additional, broad peak centered at  $3175 \text{ cm}^{-1}$  (due to the N-H stretching vibrations of the ammonium ion), previously masked by the broad water peak, also appears in the spectra of the effloresced core.

For all deliquescence, liquid-liquid phase separation, and efflorescence experiments, at least three experiments were performed at each temperature. Error bars in RH and temperature are reported as one standard deviation.

### 2.4 Ice nucleation experiments

Each ice nucleation experiment started by exposing the particles to  $\sim 0\%$  relative humidity to ensure all particles were effloresced and completely dry. The ice saturation ratio ( $S_{\text{ice}} = P_{\text{H}_2\text{O}}/VP_{\text{ice}}$ ) value over the particles in the environmental cell was controlled by keeping a constant dew point and steadily decreasing  $T$ . Specifically, after the dew point was held stable for at least 10 min,  $T$  was decreased from room temperature until  $S_{\text{ice}} \approx 0.88$ . The sample was then cooled at a rate of  $0.1 \text{ K min}^{-1}$ , corresponding to a change in  $S_{\text{ice}}$  of approximately  $0.01 \text{ min}^{-1}$ , until the onset of ice was observed at the critical ice saturation ratio ( $S_{\text{crit}}$ ). Ice nucleation was monitored at  $10\times$  magnification.

Great care was taken to ensure that the first ice nucleation event was observed; if multiple events were observed, those points were omitted and the experiment repeated.

After the first ice event was observed, the 50× objective was used to verify the existence of ice both visually and spectrally. The presence of water-ice was marked by the emergence of a broad band centered near 3250 cm<sup>-1</sup>. Next, the ice was sublimed by increasing  $T$  by 10 K and then a line map of the resultant ice nuclei was taken. Finally, to test whether ice preactivation influenced these results, the sample was warmed to 298 K and dried to ~ 0 % RH before the next experimental run. In our threshold freezing experiments, the same particle was never observed to be the first particle to nucleate ice more than once.

For all ice nucleation experiments at least three experiments were performed at each temperature. Error bars in RH and temperature are reported as one standard deviation.

### 3 Results

#### 3.1 Low temperature deliquescence/efflorescence and liquid-liquid phase separation of organic-sulfate particles

The results from the deliquescence/efflorescence and liquid-liquid phase separation experiments are shown in Fig. 3. Also shown are lines corresponding to the DRH (RH = 80 %) and ERH (RH = 35 %) of pure AS (Martin, 2000). Comparing the deliquescence and efflorescence results from this work to those of pure AS, we find that liquid organic coatings minimally affect the deliquescence and efflorescence behavior of ammonium sulfate. This has been noted in the past for particles from 273 to 298 K (Bertram et al., 2011; Smith et al., 2011); however these results extend this general behavior to below the melting point of ice. We believe that this behavior can be explained by the fast diffusion of water vapor through the liquid organic coating. Differential scanning calorimetry experiments by Zobrist et al. (2008) have shown that C6 is expected to be in a liquid state at the DRH and ERH of AS for the temperatures explored in this

## Ice nucleation on phase-separated particles

G. P. Schill and  
M. A. Tolbert

Title Page

Abstract

Introduction

Conclusions

References

Tables

Figures

⏪

⏩

◀

▶

Back

Close

Full Screen / Esc

Printer-friendly Version

Interactive Discussion



work. The diffusion coefficients for a small molecule like water diffusing through a liquid organic matrix is  $\sim 10^{-5} \text{ cm}^2 \text{ s}^{-1}$  (Shiraiwa et al., 2011). Thus, a small molecule like water should be able to diffuse through a  $1 \mu\text{m}$  liquid organic coating on the order of microseconds.

5 Similar to the data shown in Fig. 2c, d, the C6/AS and C6/C10/AS mixtures were found to undergo liquid-liquid phase separation at the temperatures explored in this study. Figure 3 includes the liquid-liquid phase separation RH (SRH) for these mixtures as a function of temperature. To the authors' knowledge, this is the first example of liquid-liquid phase separation at these temperatures; previous work was conducted at  
10 273 to 298 K. These results are in agreement with Bertram et al. (2011), who have reported that simple component organic and sulfate mixtures will generally phase separate if the O : C ratio of the organic species is  $< 0.7$ . Furthermore, the SRH of the mixtures in this study show little temperature dependence; indeed the SRH of the C6/AS mixture in a 2 : 1 organic-to-sulfate ratio in this work at 245 K is consistent with the SRH  
15 measurements of Bertram et al. (2011) taken at 273 K for C6/AS in a 2.127 : 1 organic to sulfate ratio (Fig. 3).

### 3.2 Particle morphology of effloresced organic-sulfate particles

Previously, Wise et al. (2010) showed that mixed organic-sulfate particles are efficient at nucleating ice due to incomplete organic coatings. There, it was concluded that  
20 any small portion of uncoated AS could act as the catalyst for new ice formation. To ensure that our particles were fully coated laterally, we utilized 2-D Raman mapping to investigate several particles. An example 2-D Raman map of an effloresced, phase-separated C6/AS particle can be seen in Fig. 4. Here, the sulfate containing region is mapped using the intensity of the  $\text{SO}_4^{2-}$  stretch ( $972 \text{ cm}^{-1}$ ) in the Raman spectrum  
25 where warmer colors correspond to higher intensities. Similar analysis was done for the organic containing region using the intensity of the C-H stretch ( $2900 \text{ cm}^{-1}$ ), however, the organic color map was greyscaled to differentiate between the organic and sulfate containing regions. Thus, for a phase-separated nine micron particle we see that it

## Ice nucleation on phase-separated particles

G. P. Schill and  
M. A. Tolbert

Title Page

Abstract

Introduction

Conclusions

References

Tables

Figures

⏪

⏩

◀

▶

Back

Close

Full Screen / Esc

Printer-friendly Version

Interactive Discussion



will consist of an approximately  $6\ \mu\text{m}$  AS core surrounded by  $\sim 1\text{--}3\ \mu\text{m}$  of an organic coating at all points.

Unfortunately, the present experimental setup gives only the top view of the particles and yields no quantitative information about the side view. To determine the three-dimensional morphology of the particle and ensure that no portion of the effloresced ammonium sulfate core was exposed, we used a volume-geometry analysis similar to Ciobanu et al. (2009) to reconstruct the particle shape on the experimental substrate. To do so, we determined the contact angle of several  $2\ \mu\text{l}$  C6 droplets on the silanized quartz disc using *ImageJ* software (Schneider et al., 2012) at 298 K. The average contact angle measured for these droplets was  $77 \pm 3^\circ$ . Using this value we were able to calculate the height of any droplet by measuring its lateral dimensions; however, this does not give us information about the configuration of the AS core. Thus, we assumed several possible arrangements put forth by Ciobanu et al. (2009) for two immiscible liquids (Fig. 5a–d). Two of these arrangements, spherical calotte in a spherical calotte (Fig. 5c) and half of an ellipsoid in a spherical calotte (Fig. 5d), constrained the AS core to have the same height as the organic shell; here a small portion of the AS core could be exposed. In the remaining two configurations, half-sphere in a half-sphere (Fig. 5a) and half-sphere in a spherical calotte (Fig. 5b), the AS core was fully engulfed in an organic shell. In all cases, the contact angle of the outer spherical calotte was assumed to be  $77^\circ$ . To determine which of these configurations was most likely, we measured the radius of the AS core and C6 shell to calculate the ratio of the volume of AS ( $V_{\text{AS}}$ ) to the total volume ( $V_{\text{total}}$ ) for each arrangement. These calculations were done for ten particles ranging from  $10\text{--}35\ \mu\text{m}$  in diameter (Fig. 5e), which were diameters typical of ice nuclei in this work. We then calculated the experimental ratio  $V_{\text{AS}}/V_{\text{total}}$  by assuming a 2 : 1 organic-to-sulfate mass ratio and using a bulk density of  $1.106$  and  $1.77\ \text{g cm}^{-3}$  for pure C6 and effloresced AS, respectively. As shown in Fig. 5e, the bulk density calculation  $V_{\text{AS}}/V_{\text{total}}$  matches best with the half-sphere in a spherical calotte configuration and are inconsistent with both configurations that constrain the inner and outer particles to the same height. Using this half-sphere in a spherical calotte morphology, the

## Ice nucleation on phase-separated particles

G. P. Schill and  
M. A. Tolbert

[Title Page](#)[Abstract](#)[Introduction](#)[Conclusions](#)[References](#)[Tables](#)[Figures](#)[⏪](#)[⏩](#)[◀](#)[▶](#)[Back](#)[Close](#)[Full Screen / Esc](#)[Printer-friendly Version](#)[Interactive Discussion](#)

difference in heights between the top of the C6 calotte and the top of the effloresced AS half-sphere was determined for the particles in Fig. 5e and ranged from 1.3 to 3.6  $\mu\text{m}$ . Thus, from these measurements, we conclude the particles used in this study are effloresced AS cores fully engulfed in organic shells.

### 3.3 Ice nucleation experiments

The ice nucleation behavior of the pure C6 and C6/AS system can be seen in Fig. 6. Also shown is a parameterization for depositional ice nucleation on pure AS from Baus-tian et al. (2010). As seen, pure C6 is a poor ice nucleus at all temperatures explored. Indeed, at the lower temperatures, C6 tends to nucleate ice near or even above the Koop homogeneous freezing line. This is expected, as pure C6 is expected to be a liq-uid at each of the temperatures and RH probed in this study and the Koop line is for homogeneous nucleation from aqueous solutions.

In contrast, for the C6/AS system we find that these phase-separated particles are very efficient ice nuclei. In fact, these mixed organic-sulfate particles tend to nucleate ice nearly as efficiently as pure AS despite their full organic coatings. To elucidate why these phase-separated particles are such efficient ice nuclei, we took several videos at 50 $\times$  magnification of ice nucleating on a larger particle. Select frames from one exam-ple video are shown in Fig. 7 and the entire video is available in supplementary online material. The particle before ice nucleation is shown at 0 s. At 20 s, ice nucleates inside of the coated particle at the AS-organic interface (bottom right side of the inner part of particle). The initial ice crystal appears as a bright spot and grows outwardly from that point; by 80 s, the ice has grown beyond the lateral dimensions of the organic coating. As the ice grows, the organic coating spreads over it to reduce the surface tension over the entire system. In the last frame, we see that the ice particle has now grown beyond the size of the original ice nucleus and is still stretching out the organic coating with it. This is more easily seen in Fig. 8, where a line map of the ice particle after ice has nucleated and grown is shown. As described previously, spectra are taken every 1  $\mu\text{m}$  in the  $y$  direction; thus, every notch on the red line in the image of the particle

## Ice nucleation on phase-separated particles

G. P. Schill and  
M. A. Tolbert

Title Page

Abstract

Introduction

Conclusions

References

Tables

Figures

⏪

⏩

◀

▶

Back

Close

Full Screen / Esc

Printer-friendly Version

Interactive Discussion



**Ice nucleation on phase-separated particles**G. P. Schill and  
M. A. Tolbert

Title Page

Abstract

Introduction

Conclusions

References

Tables

Figures

⏪

⏩

◀

▶

Back

Close

Full Screen / Esc

Printer-friendly Version

Interactive Discussion

corresponds to the location of a spectrum. The spectra are shown as a function of distance, and their intensities are shown as a color map, where warmer colors correlate to a higher intensity. From the line maps of the ammonia and sulfate stretches, we can see that an ammonium sulfate particle exists between  $\sim 21$  and  $30 \mu\text{m}$ . Around that particle, between  $\sim 9$  and  $35 \mu\text{m}$ , there is a large water-ice signature at  $3250 \text{ cm}^{-1}$ . Correlated with the ice stretch is the C-H stretch ( $2900 \text{ cm}^{-1}$ ) that corresponds to the presence of C6. Thus, not only can we visually see that the liquid organic coating is spreading out as the ice grows, but we can verify that spectrally. Similar to our finding that liquid organic coatings minimally affect the deliquescence and efflorescence behavior of AS, we conclude that the water vapor must be diffusing through the liquid coating and ice is nucleating on the AS core. Thus, for the C6/AS particles, we are observing immersion freezing of the organic solution in contact with the AS cores. This explains why, even though these mixed particles are fully coated, these particles are almost as efficient ice nuclei as pure, effloresced AS in the deposition nucleation mode.

To verify these findings with a more complex system with the same O : C ratio, we conducted ice nucleation experiments on C6/C10 and C6/C10/AS mixtures. The results of these experiments are shown in Fig. 9. At temperatures  $\geq 220 \text{ K}$ , the C6/C10 and C6/C10/AS systems behave similarly to pure C6 and C6/AS, respectively. Here, the pure organic system tends to be a poor IN; however, it is important to note that the pure organics nucleate ice below the Koop homogeneous nucleation line and, therefore, are likely acting as heterogeneous IN. For the C6/C10/AS system, the particles were again seen to nucleate ice almost as efficiently as pure AS in the depositional mode. Again, we find that at these temperatures we are observing immersion mode nucleation by the AS core. Thus, water vapor diffuses through the liquid organic shell, ice nucleates on the ammonium sulfate core, and the organic coating stretches out with the ice as it grows (not shown). Not only was this confirmed visually, but video and line map analysis similar to Figs. 6 and 7 were also performed (not shown).

At  $215 \text{ K}$ , we found that ice nucleates differently for both C6/C10 and C6/C10/AS. This is accompanied with an increase in ice nucleation efficiency of the pure C6/C10

## Ice nucleation on phase-separated particles

G. P. Schill and  
M. A. Tolbert

Title Page

Abstract

Introduction

Conclusions

References

Tables

Figures

⏪

⏩

◀

▶

Back

Close

Full Screen / Esc

Printer-friendly Version

Interactive Discussion



system. Here, we found that ice nucleates at the organic-air interface for both the pure organic and the organic-sulfate system. This is shown in Fig. 10 for select frames with the full nucleation movie available in the supplementary online material. Here, the images clearly show that ice is nucleating on the outside of the particle and not the inside. In addition, after ice nucleates on the organic shell, the organic does not spread out around the ice, suggesting that the organic shell is no longer a flowing liquid. This is verified by a line map taken of the ice particle (Fig. 11). Here we see there is a sulfate core between  $\sim 16$  and  $31 \mu\text{m}$  surrounded by an organic coating ( $\sim 12.5$  to  $37 \mu\text{m}$ ); the ice, found between  $\sim 5.5$  and  $12.5 \mu\text{m}$ , however is not in contact with the sulfate core, and only grows from the organic shell. Furthermore, we see that the ice stretch is not correlated with the organic stretch. We believe that at these temperatures and relative humidities, the organic mixture is no longer a liquid, but rather a highly viscous (semi-)solid or glassy particle.

Despite the change in the heterogeneous nucleation site, the (semi-)solid or glassy organic IN in this work nucleate ice depositionally nearly as efficiently as pure AS. We attribute this ice nucleation efficacy to the incorporation of water molecules into the glassy matrix. Prior to undergoing a glass transition, the organic will be in a liquid state that is in equilibrium with its surrounding water vapor (Mikhailov et al., 2009). Upon approaching the glass transition, the diffusion of water in the organic matrix will drop, and water will become entrenched in the viscous organic matrix (Zobrist et al., 2011). These entrenched water molecules could facilitate the formation of ice by providing a template similar to the crystal structure of ice (Pruppacher and Klett, 1996).

### 3.4 Ice nucleation on solid amorphous organic particles above the glass transition line

The experimental glass transition lines determined using differential scanning calorimetry by Zobrist et al. (2008) for aqueous glasses of C6 and C10 are shown in Fig. 12. The corresponding shaded areas around each of these  $T_g$  curves are the associated errors calculated using the parameterizations found in Zobrist et al. (2008). Also shown

is the predicted  $T_g$  curve for a 1 : 1 mixture (by mass) of C6 and C10 using a mixing rule that depends on the molar masses and weight fractions of the individual polyols (Zobrist et al., 2008). Since this predicted curve does not have an associated error, the orange shaded region is simply bound by the pure C6 and C10  $T_g$  curves. Plotted with the experimental and predicted  $T_g$  curves are the threshold ice nucleation points for C6/C10 and C6/C10/AS at 210 and 215 K, where the organic particles/coatings were visually and spectrally shown to behave like highly viscous (semi-)solids or glasses (Figs. 10, 11). As shown, these points are above the predicted glass transition line for a 1 : 1 mixture of C6 and C10.

To explain this behavior, we set out to approximate the viscosity of the C6/C10 at the onset freezing conditions. The steep dependence of viscosity ( $\eta$ ) on temperature can be described by the Williams–Landel–Ferry equation (Debenedetti, 1996):

$$\log(\eta) = \log(\eta_{T_g}) \cdot [17.44(T - T_g)] / [51.6 + (T - T_g)], \quad (1)$$

where  $\eta_{T_g}$  is the viscosity at the glass transition temperature, taken to be  $10^{12}$  Pas. For the ice nucleation experiments at 215 K, ice nucleated on C6/C10 and C6/C10/AS at 70.7% RH. At this RH, the predicted  $T_g$  for 1 : 1 C6/C10 is 186 K. Using Eq. (1),  $\eta$  for 1 : 1 C6/C10 is approximately  $8.7 \times 10^5$  Pas. Similarly, at 210 K, ice nucleated on C6/C10 and C6/C10/AS at 74.0% RH, which correlates to a predicted  $T_g$  of 182 K and an  $\eta$  of approximately  $6.3 \times 10^5$  Pas. Thus, at 210 and 215 K, pure C6/C10 and the C6/C10 coatings are considered amorphous semi-solids (Shiraiwa et al., 2011).

Zobrist et al. (2011) have shown that the diffusion coefficients for a small molecule like water diffusing through a glassy matrix at room temperature is  $\sim 10^{-10}$  cm<sup>2</sup> s<sup>-1</sup>; however, the diffusion constant was observed to decrease strongly with decreasing temperature. For example, at 200 K, the diffusion coefficient for water through a glassy matrix drops 10 orders of magnitude to  $10^{-20}$  cm<sup>2</sup> s<sup>-1</sup>. Similar temperature dependence could be expected for highly viscous semi-solids above the glass transition. To the authors' knowledge, no such measurements have been made at temperatures relevant to this study. Shiraiwa et al. (2011) have measured the diffusion of the small molecule

## Ice nucleation on phase-separated particles

G. P. Schill and  
M. A. Tolbert

[Title Page](#)[Abstract](#)[Introduction](#)[Conclusions](#)[References](#)[Tables](#)[Figures](#)[⏪](#)[⏩](#)[◀](#)[▶](#)[Back](#)[Close](#)[Full Screen / Esc](#)[Printer-friendly Version](#)[Interactive Discussion](#)



ozone through an amorphous semi-solid matrix at room temperature to be  $\sim 10^{-7}$  to  $10^{-9} \text{ cm}^2 \text{ s}^{-1}$ . If a similar, strong temperature dependence followed for amorphous semi-solids, the time for a water molecule to diffuse through a  $1 \mu\text{m}$  semi-solid shell may take much longer than that timescales of our ice nucleation experiments.

Thus, for phase-separated organic-sulfate particles studied here, we find that if an organic coating is in its liquid state, then water vapor diffuses through the organic shell and nucleates on the AS core. If the organic coating become sufficiently viscous, however, then the water vapor can no longer diffuse through to the AS core, and ice nucleates on the organic shell. Two things should be noted here. One, the AS core does not seem to affect the ice nucleation behavior of the semi-solid organic; thus, the ice nucleation properties of these particles may depend almost entirely on the properties of the organic species. Two, for mixed organic-sulfate particles with liquid organic coating, the organic species minimally affects not only the deliquescence and efflorescence, but also the ice nucleation behavior of AS.

#### 4 Atmospheric implications

Recently, several studies have underlined the importance of LLPS and its effect on the hygroscopic phase transitions of complex organic-sulfate aerosol. Song et al. (2012) have shown that mixtures of three dicarboxylic acids and AS will undergo LLPS as long as their average O : C value was  $< 0.7$ . It was also shown that these phase-separated particles minimally affect the deliquescence and efflorescence behavior of pure AS at 298 K, which is in agreement with results from Bertram et al. (2011) taken at 273 and 290 K. This behavior has also been seen with complex organic-sulfate particles at 298 K that were generated by condensing secondary organic aerosol (SOA) produced by dark ozonolysis of  $\alpha$ -pinene on AS seed particles Smith et al. (2011). Here, the SOA was likely comprised of tens to hundreds of different organic molecules with average O : C ratios of 0.39 and 0.44 as measured by the aerosol mass spectrometer (AMS).

### Ice nucleation on phase-separated particles

G. P. Schill and  
M. A. Tolbert

Title Page

Abstract

Introduction

Conclusions

References

Tables

Figures

⏪

⏩

◀

▶

Back

Close

Full Screen / Esc

Printer-friendly Version

Interactive Discussion



---

**Ice nucleation on  
phase-separated  
particles**G. P. Schill and  
M. A. Tolbert

---

[Title Page](#)[Abstract](#)[Introduction](#)[Conclusions](#)[References](#)[Tables](#)[Figures](#)[⏪](#)[⏩](#)[◀](#)[▶](#)[Back](#)[Close](#)[Full Screen / Esc](#)[Printer-friendly Version](#)[Interactive Discussion](#)

The deliquescence and efflorescence behavior of these phase-separated particles is in stark contrast with uniphase organic-sulfate aerosol. For example, Marcolli et al. (2004) have shown that particles consisting of five organic acids and AS that do not undergo LLPS, have a DRH of 36.4 %, and may inhibit efflorescence in these particles altogether. The authors concluded that ambient organic-sulfate aerosol may exist predominantly in a liquid state. Similar behavior was found for complex, chamber made SOA produced by the photo-oxidation of isoprene (O : C ratios of 0.67 and 0.74) condensed onto AS seed particles (Smith et al., 2012). Here, efflorescence was completely inhibited for organic volume fractions above 0.6, and the DRH was as low as 40 % for organic volume fractions approaching 0.9. These results are in good agreement with the parameterization of Bertram et al. (2011), who have shown that phase separation is generally inhibited for organics with an O : C ratio > 0.7, and that large organic-to-sulfate ratios in uniphase particles will depress both the DRH and ERH of organic-sulfate particles.

Many recent studies of ambient organic aerosol, however, show an average O : C ratio of the organic fraction as measured by the AMS < 0.7, even in heavily polluted areas like Mexico City (Aiken et al., 2008). Furthermore, factor analysis of 43 AMS data sets show that all semi-volatile oxygenated organic aerosol (SV-OOA) had an average O : C ratio of  $0.34 \pm 0.14$  and low-volatility OOA (LV-OOA) had an average O : C ratio of  $0.73 \pm 0.14$  (Ng et al., 2010). Thus, all of the SV-OOA and a part of the LV-OOA fall into the O : C range where LLPS is expected. Indeed, You et al. (2012), have observed LLPS at 291 K in real-world, organic-sulfate particles collected the Atlanta, GA region. Finally, modeling work from Jensen et al. (2010) have shown that deliquesced ammonium sulfate particles that detrain from deep convective updrafts in the cold tropical tropopause layer can undergo efflorescence, and therefore phase separation, and be dry 20–80 % of their lifetime. These two combined effects indicate that effloresced, phase-separated particles can exist in the upper troposphere and could provide potential ice nuclei.

**Ice nucleation on  
phase-separated  
particles**G. P. Schill and  
M. A. Tolbert

Title Page

Abstract

Introduction

Conclusions

References

Tables

Figures

⏪

⏩

◀

▶

Back

Close

Full Screen / Esc

Printer-friendly Version

Interactive Discussion



Our measurements show that phase separation in mixed organic-sulfate particles can occur at temperatures as low as 245 K, and that liquid organic coatings minimally affect the ice nucleation efficiency of effloresced ammonium sulfate cores down to 210 K. The heterogeneous ice nucleation efficiency of solid, effloresced ammonium sulfate has already been established (Abbatt et al., 2006; Baustian et al., 2010; Wise et al., 2010). Upon cooling or drying, atmospheric organics have been shown to undergo a glass transition (Koop et al., 2011), which often acts as a surface for heterogeneous ice nucleation (Wilson et al., 2012). In this work, C6/C10 was observed to nucleate ice at  $S_{ice} = 1.2$  to 1.3 from 210 to 215 K. This is accord with previous work on ice nucleation on simple organic glasses. For example, Murray et al. (2010) saw ice nucleate on glassy citric acid at  $S_{ice} = 1.23$  for 210 K. In a follow-up study Wilson et al. (2012) saw ice nucleate on single component aqueous organic glasses at  $S_{ice} = 1.2$  to 1.55 from 190.8 to 218.5 K. Finally, Baustian et al. (2012b) have shown that ice nucleates on glassy glucose, sucrose, and citric acid between 210 and 235 K at  $S_{ice} = 1.1$  to 1.4. Glassy, chamber generated SOM from the oxidation of naphthalene nucleated ice only slightly higher, from  $S_{ice} = 1.36$  to 1.52, at  $T < 230$  K (Wang et al., 2012a), but the authors state their minimum  $S_{ice}$  values for this temperature range was 1.23.

Thus, the combined ambient O:C ratios, deliquescence, liquid-liquid phase separation, and efflorescence behavior of organic-sulfate mixtures, even when the organic fraction is multi-component, indicates that phase-separated particles could exist in the upper troposphere. Our measurements show that phase-separated, effloresced organic-sulfate particles can be efficient IN regardless of the phase state of the organic species, suggesting that these particle types are of significance for atmospheric ice nucleation.

## 5 Conclusions

We have shown that particles consisting of mixtures of AS with C6 and C6/C10, both having an O : C ratio of 0.5, will phase separate at temperatures from 245 to 260 K. At these temperatures, it was also seen that these organic coatings minimally affect both the deliquescence and efflorescence relative humidities of AS.

We have also shown that pure C6 is a poor ice nucleus, initiating the formation of ice near or above the Koop homogeneous nucleation line. Pure C6/C10 behaved similarly from 220 to 235 K; however, at 215 K, this system became a more efficient ice nucleus. We attribute this to the particle moving from a liquid to a highly viscous (semi-)solid or glassy state. Ice nucleation on the particle exterior was confirmed both visually and spectrally using Raman line maps.

For the mixed organic-sulfate particles, we saw that if that particles underwent phase separation and efflorescence, and that if the coating was liquid, water vapor diffused through the liquid organic shell and nucleated on the AS core; here, we were observing immersion freezing of the organic shell by the AS core. If the organic coating becomes semi-solid or glassy, however, then water vapor may no longer be able to diffuse through the organic on timescales relevant to even the atmosphere; here, ice can depositively freeze on the organic shell.

In conclusion, we find that phase separated mixed organic-sulfate particles can be excellent ice nuclei whether or not the organic coating is a liquid or a glass. If the coating is liquid, then the AS nucleates ice in the immersion mode at similar  $S_{ice}$  as pure AS in the depositional mode. If, however, the coating becomes semi-solid or glassy, then it still may be good ice nucleus, due to the retention of water molecules in the organic matrix.

**Supplementary material related to this article is available online at:**  
**[http://www.atmos-chem-phys-discuss.net/12/30951/2012/  
acpd-12-30951-2012-supplement.zip](http://www.atmos-chem-phys-discuss.net/12/30951/2012/acpd-12-30951-2012-supplement.zip)**

30970

ACPD

12, 30951–30988, 2012

### Ice nucleation on phase-separated particles

G. P. Schill and  
M. A. Tolbert

Title Page

Abstract

Introduction

Conclusions

References

Tables

Figures

⏪

⏩

◀

▶

Back

Close

Full Screen / Esc

Printer-friendly Version

Interactive Discussion



*Acknowledgements.* This work was supported by the National Science Foundation under grants AGS1048536 and ATM0650023.

## References

- 5 Abbatt, J. P. D., Benz, S., Cziczo, D. J., Kanji, Z., Lohmann, U., and Mohler, O.: Solid ammonium sulfate aerosols as ice nuclei: a pathway for cirrus cloud formation, *Science*, 313, 1770–1773, doi:10.1126/science.1129726, 2006.
- Aiken, A. C., Decarlo, P. F., Kroll, J. H., Worsnop, D. R., Huffman, J. A., Docherty, K. S., Ulbrich, I. M., Mohr, C., Kimmel, J. R., Sueper, D., Sun, Y., Zhang, Q., Trimborn, A., Northway, M., Ziemann, P. J., Canagaratna, M. R., Onasch, T. B., Alfarra, M. R., Prevot, A. S. H.,  
10 Dommen, J., Duplissy, J., Metzger, A., Baltensperger, U., and Jimenez, J. L.: O/C and OM/OC ratios of primary, secondary, and ambient organic aerosols with high-resolution time-of-flight aerosol mass spectrometry, *Environ. Sci. Technol.*, 42, 4478–4485, doi:10.1021/es703009q, 2008.
- Baustian, K. J., Wise, M. E., and Tolbert, M. A.: Depositional ice nucleation on solid ammonium sulfate and glutaric acid particles, *Atmos. Chem. Phys.*, 10, 2307–2317, doi:10.5194/acp-10-2307-2010, 2010.
- Baustian, K. J., Cziczo, D. J., Wise, M. E., Pratt, K. A., Kulkarni, G., Hallar, A. G., and Tolbert, M. A.: Importance of aerosol composition, mixing state, and morphology for heterogeneous ice nucleation: a combined field and laboratory approach, *J. Geophys. Res.*, 117, D06217, doi:10.1029/2011jd016784, 2012a.
- 20 Baustian, K. J., Wise, M. E., Jensen, E. J., Schill, G. P., Freedman, M. A., and Tolbert, M. A.: State transformations and ice nucleation in glassy or (semi-)solid amorphous organic aerosol, *Atmos. Chem. Phys. Discuss.*, 12, 27333–27366, doi:10.5194/acpd-12-27333-2012, 2012b.
- 25 Bertram, A. K., Martin, S. T., Hanna, S. J., Smith, M. L., Bodsworth, A., Chen, Q., Kuwata, M., Liu, A., You, Y., and Zorn, S. R.: Predicting the relative humidities of liquid-liquid phase separation, efflorescence, and deliquescence of mixed particles of ammonium sulfate, organic material, and water using the organic-to-sulfate mass ratio of the particle and the oxygen-to-carbon elemental ratio of the organic component, *Atmos. Chem. Phys.*, 11, 10995–11006, doi:10.5194/acp-11-10995-2011, 2011.
- 30

## Ice nucleation on phase-separated particles

G. P. Schill and  
M. A. Tolbert

Title Page

Abstract

Introduction

Conclusions

References

Tables

Figures

⏪

⏩

◀

▶

Back

Close

Full Screen / Esc

Printer-friendly Version

Interactive Discussion



**Ice nucleation on  
phase-separated  
particles**G. P. Schill and  
M. A. Tolbert

Title Page

Abstract

Introduction

Conclusions

References

Tables

Figures

⏪

⏩

◀

▶

Back

Close

Full Screen / Esc

Printer-friendly Version

Interactive Discussion



Ciobanu, V. G., Marcolli, C., Krieger, U. K., Weers, U., and Peter, T.: Liquid-Liquid Phase Separation in Mixed Organic/Inorganic Aerosol Particles, *J. Phys. Chem. A*, 113, 10966–10978, doi:10.1021/jp905054d, 2009.

Cziczo, D. J., DeMott, P. J., Brooks, S. D., Prenni, A. J., Thomson, D. S., Baumgardner, D., Wilson, J. C., Kreidenweis, S. M., and Murphy, D. M.: Observations of organic species and atmospheric ice formation, *Geophys. Res. Lett.*, 31, L12116, doi:10.1029/2004gl019822, 2004.

Debenedetti, P. G.: *Metastable Liquids: Concepts and Principles*, Princeton University Press, Princeton, NJ, 1996.

Everall, N. J.: Confocal Raman microscopy: common errors and artefacts, *Analyst*, 135, 2512–2522, doi:10.1039/c0an00371a, 2010.

Forster, P., Ramaswamy, V., Artaxo, P., Bernsten, T., Betts, R., Fahey, D. W., Haywood, J., Lean, J., Lowe, D. C., Myhre, G., Nganga, J., Prinn, R., Raga, G., Schulz, M., and Van Dorland, R.: Changes in atmospheric constituents and radiative forcing, in: *Climate Change 2007: The Physical Science Basis, Contribution of Working Group I to the Fourth Assessment Report of the Intergovernmental Panel on Climate Change*, edited by: Solomon, S., Qin, D., Manning, M., Chen, Z., Marquis, M., Averyt, K. B., Tignor, M., and Miller, H. L., Cambridge Univ. Press, Cambridge, UK, 131–234, 2007.

Froyd, K. D., Murphy, D. M., Sanford, T. J., Thomson, D. S., Wilson, J. C., Pfister, L., and Lait, L.: Aerosol composition of the tropical upper troposphere, *Atmos. Chem. Phys.*, 9, 4363–4385, doi:10.5194/acp-9-4363-2009, 2009.

Froyd, K. D., Murphy, D. M., Lawson, P., Baumgardner, D., and Herman, R. L.: Aerosols that form subvisible cirrus at the tropical tropopause, *Atmos. Chem. Phys.*, 10, 209–218, doi:10.5194/acp-10-209-2010, 2010.

Goldstein, A. H. and Galbally, I. E.: Known and unexplored organic constituents in the earth's atmosphere, *Environ. Sci. Technol.*, 41, 1514–1521, 2007.

Jensen, E. J., Pfister, L., Bui, T.-P., Lawson, P., and Baumgardner, D.: Ice nucleation and cloud microphysical properties in tropical tropopause layer cirrus, *Atmos. Chem. Phys.*, 10, 1369–1384, doi:10.5194/acp-10-1369-2010, 2010.

Kanji, Z. A., Florea, O., and Abbatt, J. P. D.: Ice formation via deposition nucleation on mineral dust and organics: dependence of onset relative humidity on total particulate surface area, *Environ. Res. Lett.*, 3, 025004, doi:10.1088/1748-9326/3/2/025004, 2008.

**Ice nucleation on  
phase-separated  
particles**G. P. Schill and  
M. A. Tolbert

Title Page

Abstract

Introduction

Conclusions

References

Tables

Figures

⏪

⏩

◀

▶

Back

Close

Full Screen / Esc

Printer-friendly Version

Interactive Discussion



Koehler, K. A., Kreidenweis, S. M., DeMott, P. J., Petters, M. D., Prenni, A. J., and Möhler, O.: Laboratory investigations of the impact of mineral dust aerosol on cold cloud formation, *Atmos. Chem. Phys.*, 10, 11955–11968, doi:10.5194/acp-10-11955-2010, 2010.

Koop, T., Luo, B. P., Tsias, A., and Peter, T.: Water activity as the determinant for homogeneous ice nucleation in aqueous solutions, *Nature*, 406, 611–614, doi:10.1038/35020537, 2000.

Koop, T., Bookhold, J., Shiraiwa, M., and Poschl, U.: Glass transition and phase state of organic compounds: dependency on molecular properties and implications for secondary organic aerosols in the atmosphere, *Phys. Chem. Chem. Phys.*, 13, 19238–19255, doi:10.1039/c1cp22617g, 2011.

Krämer, M., Schiller, C., Afchine, A., Bauer, R., Gensch, I., Mangold, A., Schlicht, S., Spelten, N., Sitnikov, N., Borrmann, S., de Reus, M., and Spichtinger, P.: Ice supersaturations and cirrus cloud crystal numbers, *Atmos. Chem. Phys.*, 9, 3505–3522, doi:10.5194/acp-9-3505-2009, 2009.

Kwamena, N. O. A., Buajareern, J., and Reid, J. P.: Equilibrium morphology of mixed organic/inorganic/aqueous aerosol droplets: investigating the effect of relative humidity and surfactants, *J. Phys. Chem. A*, 114, 5787–5795, doi:10.1021/jp1003648, 2010.

Lawson, R. P., Pilon, B., Baker, B., Mo, Q., Jensen, E., Pfister, L., and Bui, P.: Aircraft measurements of microphysical properties of subvisible cirrus in the tropical tropopause layer, *Atmos. Chem. Phys.*, 8, 1609–1620, doi:10.5194/acp-8-1609-2008, 2008.

Marcolli, C. and Krieger, U. K.: Phase changes during hygroscopic cycles of mixed organic/inorganic model systems of tropospheric aerosols, *J. Phys. Chem. A*, 110, 1881–1893, doi:10.1021/jp0556759, 2006.

Marcolli, C., Luo, B. P., and Peter, T.: Mixing of the organic aerosol fractions: liquids as the thermodynamically stable phases, *J. Phys. Chem. A*, 108, 2216–2224, doi:10.1021/jp036080l, 2004.

Martin, S. T.: Phase transitions of aqueous atmospheric particles, *Chem. Rev.*, 100, 3403–3453, doi:10.1021/cr990034t, 2000.

Mikhailov, E., Vlasenko, S., Martin, S. T., Koop, T., and Pöschl, U.: Amorphous and crystalline aerosol particles interacting with water vapor: conceptual framework and experimental evidence for restructuring, phase transitions and kinetic limitations, *Atmos. Chem. Phys.*, 9, 9491–9522, doi:10.5194/acp-9-9491-2009, 2009.

Möhler, O., Benz, S., Saathoff, H., Schnaiter, M., Wagner, R., Schneider, J., Walter, S., Ebert, V., and Wagner, S.: The effect of organic coating on the heterogeneous ice nucleation efficiency

**Ice nucleation on  
phase-separated  
particles**G. P. Schill and  
M. A. Tolbert

Title Page

Abstract

Introduction

Conclusions

References

Tables

Figures

⏪

⏩

◀

▶

Back

Close

Full Screen / Esc

Printer-friendly Version

Interactive Discussion

of mineral dust aerosols, *Environ. Res. Lett.*, 3, 025007, doi:10.1088/1748-9326/3/2/025007, 2008.

Murphy, D. M. and Koop, T.: Review of the vapour pressures of ice and supercooled water for atmospheric applications, *Q. J. Roy. Meteor. Soc.*, 131, 1539–1565, doi:10.1256/qj.04.94, 2005.

Murray, B. J., Wilson, T. W., Dobbie, S., Cui, Z. Q., Al-Jumur, S., Mohler, O., Schnaiter, M., Wagner, R., Benz, S., Niemand, M., Saathoff, H., Ebert, V., Wagner, S., and Karcher, B.: Heterogeneous nucleation of ice particles on glassy aerosols under cirrus conditions, *Nat. Geosci.*, 3, 233–237, doi:10.1038/ngeo817, 2010.

Ng, N. L., Canagaratna, M. R., Zhang, Q., Jimenez, J. L., Tian, J., Ulbrich, I. M., Kroll, J. H., Docherty, K. S., Chhabra, P. S., Bahreini, R., Murphy, S. M., Seinfeld, J. H., Hildebrandt, L., Donahue, N. M., DeCarlo, P. F., Lanz, V. A., Prévôt, A. S. H., Dinar, E., Rudich, Y., and Worsnop, D. R.: Organic aerosol components observed in Northern Hemispheric datasets from Aerosol Mass Spectrometry, *Atmos. Chem. Phys.*, 10, 4625–4641, doi:10.5194/acp-10-4625-2010, 2010.

Pruppacher, H. R. and Klett, J. D.: *Microphysics of clouds and precipitation*, Kluwer Academic Publishers, Dordrecht, The Netherlands, 1996.

Reid, J. P., Dennis-Smith, B. J., Kwamena, N. O. A., Miles, R. E. H., Hanford, K. L., and Homer, C. J.: The morphology of aerosol particles consisting of hydrophobic and hydrophilic phases: hydrocarbons, alcohols and fatty acids as the hydrophobic component, *Phys. Chem. Chem. Phys.*, 13, 15559–15572, doi:10.1039/c1cp21510h, 2011.

Rogers, D. C., DeMott, P. J., and Kreidenweis, S. M.: Airborne measurements of tropospheric ice-nucleating aerosol particles in the Arctic spring, *J. Geophys. Res.*, 106, 15053–15063, doi:10.1029/2000jd900790, 2001.

Schill, G. P. and Tolbert, M. A.: Depositional ice nucleation on monocarboxylic acids: effect of the O:C Ratio, *J. Phys. Chem. A*, 116, 6817–6822, doi:10.1021/jp301772q, 2012.

Schneider, C. A., Rasband, W. S., and Eliceiri, K. W.: NIH Image to ImageJ: 25 years of image analysis, *Nat. Methods*, 9, 671–675, doi:10.1038/nmeth.2089, 2012.

Shiraiwa, M., Ammann, M., Koop, T., and Poschl, U.: Gas uptake and chemical aging of semisolid organic aerosol particles, *P. Natl. Acad. Sci. USA*, 108, 11003–11008, doi:10.1073/pnas.1103045108, 2011.



**Ice nucleation on  
phase-separated  
particles**G. P. Schill and  
M. A. Tolbert

Title Page

Abstract

Introduction

Conclusions

References

Tables

Figures

⏪

⏩

◀

▶

Back

Close

Full Screen / Esc

Printer-friendly Version

Interactive Discussion



- Smith, M. L., Kuwata, M., and Martin, S. T.: Secondary organic material produced by the dark  
ozonolysis of alpha-pinene minimally affects the deliquescence and efflorescence of ammo-  
nium sulfate, *Aerosol Sci. Tech.*, 45, 244–261, doi:10.1080/02786826.2010.532178, 2011.
- 5 Smith, M. L., Bertram, A. K., and Martin, S. T.: Deliquescence, efflorescence, and phase misci-  
bility of mixed particles of ammonium sulfate and isoprene-derived secondary organic mate-  
rial, *Atmos. Chem. Phys.*, 12, 9613–9628, doi:10.5194/acp-12-9613-2012, 2012.
- Song, M., Marcolli, C., Krieger, U. K., Zuend, A., and Peter, T.: Liquid-liquid phase separation  
and morphology of internally mixed dicarboxylic acids/ammonium sulfate/water particles, *At-  
mos. Chem. Phys.*, 12, 2691–2712, doi:10.5194/acp-12-2691-2012, 2012.
- 10 Wang, B., Lambe, A. T., Massoli, P., Onasch, T. B., Davidovits, P., Worsnop, D. R., and  
Knopf, D. A.: The deposition ice nucleation and immersion freezing potential of amorphous  
secondary organic aerosol: pathways for ice and mixed-phase cloud formation, *J. Geophys.  
Res.*, 117, D16209, doi:10.1029/2012JD018063, 2012a.
- Wang, B., Laskin, A., Roedel, T., Gilles, M. K., Moffet, R. C., Tivanski, A. V., and Knopf, D. A.:  
15 Heterogeneous ice nucleation and water uptake by field-collected atmospheric particles be-  
low 273 K, *J. Geophys. Res.*, 117, D00V19, doi:10.1029/2012JD017446, 2012b.
- Wilson, T. W., Murray, B. J., Wagner, R., Möhler, O., Saathoff, H., Schnaiter, M., Skrotzki, J.,  
Price, H. C., Malkin, T. L., Dobbie, S., and Al-Jumur, S. M. R. K.: Glassy aerosols with a  
range of compositions nucleate ice heterogeneously at cirrus temperatures, *Atmos. Chem.  
20 Phys.*, 12, 8611–8632, doi:10.5194/acp-12-8611-2012, 2012.
- Wise, M. E., Baustian, K. J., and Tolbert, M. A.: Internally mixed sulfate and organic particles  
as potential ice nuclei in the tropical tropopause region, *P. Natl. Acad. Sci. USA*, 107, 6693–  
6698, doi:10.1073/pnas.0913018107, 2010.
- You, Y., Renbaum-Wolff, L., Carreras-Sospedra, M., Hanna, S. J., Hiranuma, N., Kamal, S.,  
25 Smith, M. L., Zhang, X. L., Weber, R. J., Shilling, J. E., Dabdub, D., Martin, S. T., and  
Bertram, A. K.: Images reveal that atmospheric particles can undergo liquid-liquid phase  
separations, *P. Natl. Acad. Sci. USA*, 109, 13188–13193, doi:10.1073/pnas.1206414109,  
2012.
- Zobrist, B., Marcolli, C., Koop, T., Luo, B. P., Murphy, D. M., Lohmann, U., Zardini, A. A.,  
Krieger, U. K., Corti, T., Cziczo, D. J., Fueglistaler, S., Hudson, P. K., Thomson, D. S., and Pe-  
30 ter, T.: Oxalic acid as a heterogeneous ice nucleus in the upper troposphere and its indirect  
aerosol effect, *Atmos. Chem. Phys.*, 6, 3115–3129, doi:10.5194/acp-6-3115-2006, 2006.

Zobrist, B., Marcolli, C., Pedernera, D. A., and Koop, T.: Do atmospheric aerosols form glasses?, Atmos. Chem. Phys., 8, 5221–5244, doi:10.5194/acp-8-5221-2008, 2008.

Zobrist, B., Soonsin, V., Luo, B. P., Krieger, U. K., Marcolli, C., Peter, T., and Koop, T.: Ultra-slow water diffusion in aqueous sucrose glasses, Phys. Chem. Chem. Phys., 13, 3514–3526, doi:10.1039/c0cp01273d, 2011.

5

## Ice nucleation on phase-separated particles

G. P. Schill and  
M. A. Tolbert

Title Page

Abstract

Introduction

Conclusions

References

Tables

Figures



Back

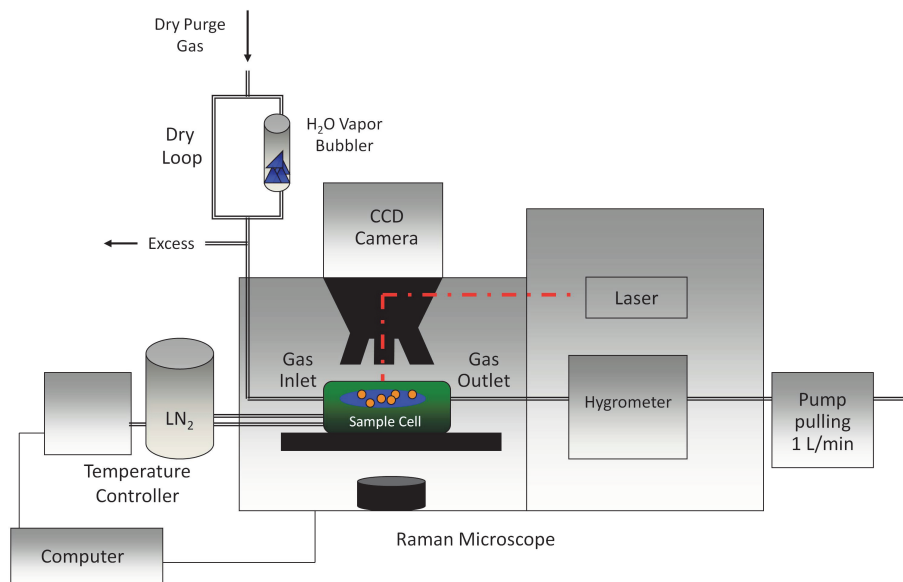
Close

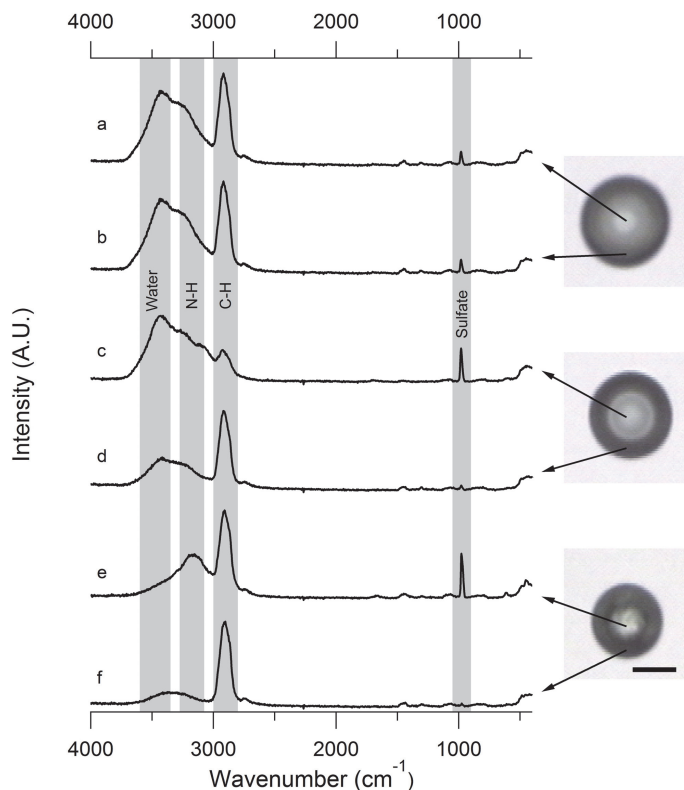
Full Screen / Esc

Printer-friendly Version

Interactive Discussion



**Ice nucleation on  
phase-separated  
particles**G. P. Schill and  
M. A. Tolbert**Fig. 1.** Schematic representation of the Raman microscope setup.[Title Page](#)[Abstract](#)[Introduction](#)[Conclusions](#)[References](#)[Tables](#)[Figures](#)[⏪](#)[⏩](#)[◀](#)[▶](#)[Back](#)[Close](#)[Full Screen / Esc](#)[Printer-friendly Version](#)[Interactive Discussion](#)



**Fig. 2.** Raman spectra of **(a)** the center of deliquesced C6/AS, **(b)** the edge of deliquesced C6/AS **(c)** the core of a C6/AS particle after LLPS, **(d)** the shell of a C6/AS particle after LLPS, **(e)** the core of a C6/AS particle after efflorescence, and **(f)** the shell of a C6/AS particle after efflorescence. The mixed particle used for Raman analysis is shown on the right. All measurements were taken at 260 K. The size bar in the optical microscope image corresponds to 10  $\mu\text{m}$ .

**Ice nucleation on phase-separated particles**

G. P. Schill and M. A. Tolbert

Title Page

Abstract Introduction

Conclusions References

Tables Figures

⏪ ⏩

◀ ▶

Back Close

Full Screen / Esc

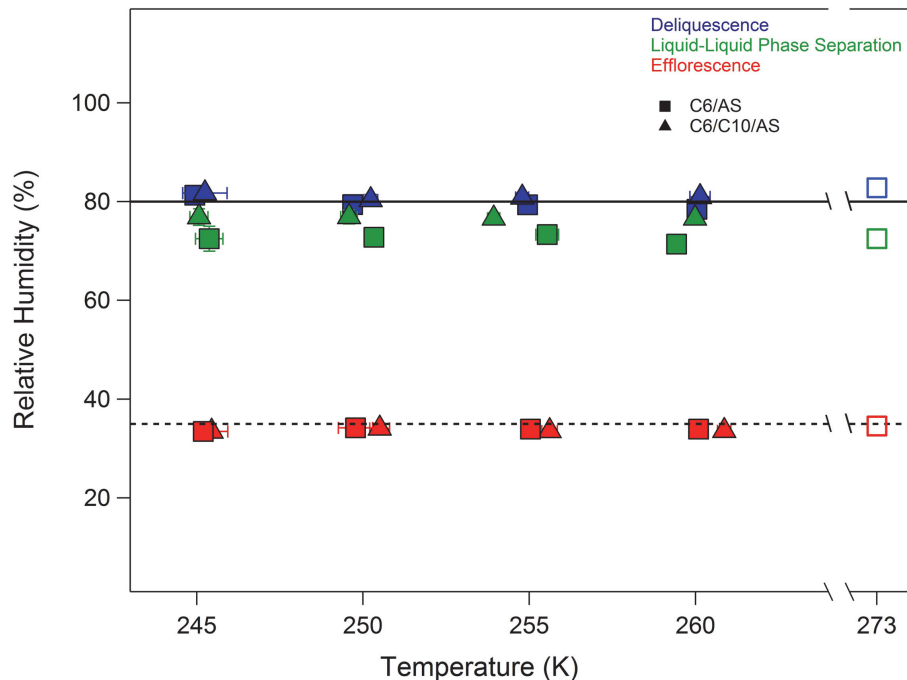
Printer-friendly Version

Interactive Discussion



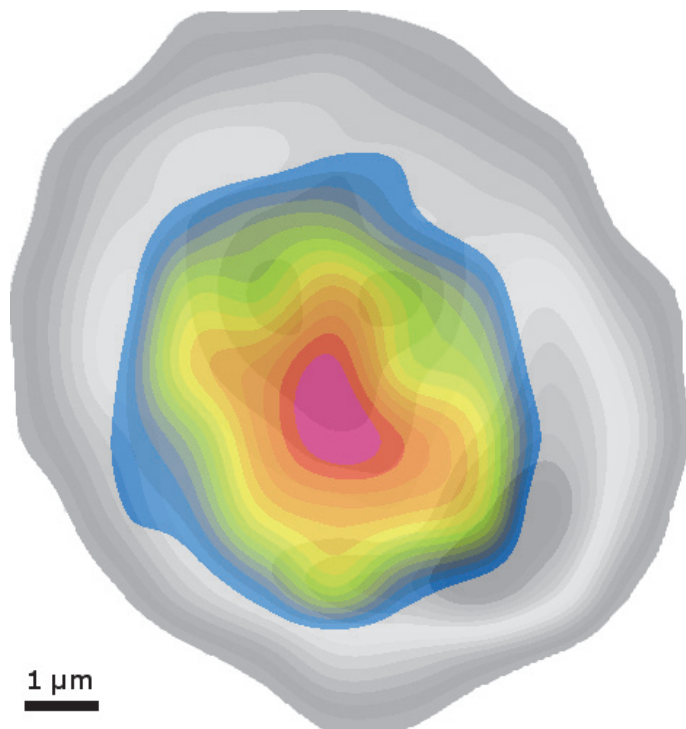
## Ice nucleation on phase-separated particles

G. P. Schill and  
M. A. Tolbert



**Fig. 3.** Hygroscopic phase transitions of C6/AS and C6/C10/AS. For comparison, the DRH (RH = 80 %, solid line) and ERH (RH = 35 %, dashed line) lines for pure AS have been plotted. Experimental results from Bertram et al. (2011) for C6/AS in a 2.127 organic-to-sulfate ratio have also been plotted (open squares). Error bars in RH and temperature are reported as one standard deviation.

[Title Page](#)[Abstract](#)[Introduction](#)[Conclusions](#)[References](#)[Tables](#)[Figures](#)[◀](#)[▶](#)[◀](#)[▶](#)[Back](#)[Close](#)[Full Screen / Esc](#)[Printer-friendly Version](#)[Interactive Discussion](#)



**Fig. 4.** Two-dimensional Raman spectral map of a C6/AS particle at 298 K. The sulfate-containing region is shown as a color map where warmer colors refer to a higher intensity of the  $\text{SO}_4^{2-}$  peak ( $972\text{ cm}^{-1}$ ). The organic-containing region is shown as a grey-scaled color map where warmer colors correlated to a higher intensity of the C-H peak ( $2900\text{ cm}^{-1}$ ). As shown, the particle is fully coated laterally.

**Ice nucleation on phase-separated particles**

G. P. Schill and  
M. A. Tolbert

Title Page

Abstract

Introduction

Conclusions

References

Tables

Figures

⏪

⏩

◀

▶

Back

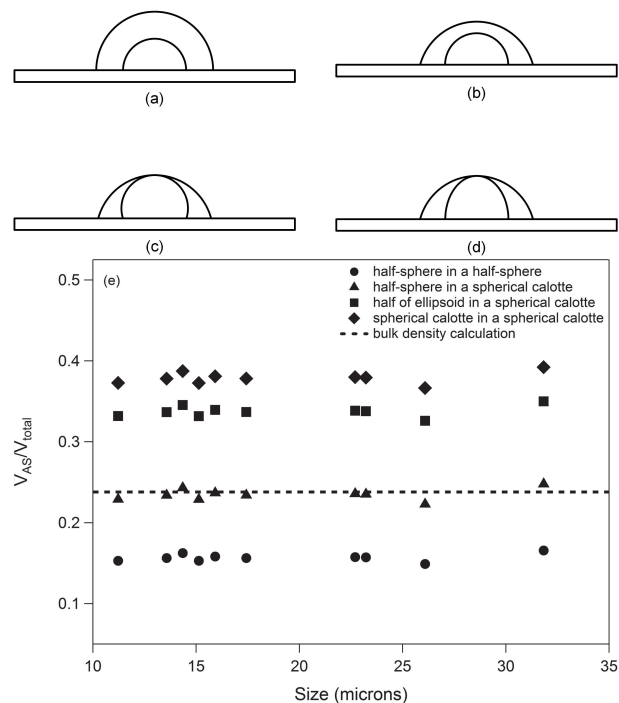
Close

Full Screen / Esc

Printer-friendly Version

Interactive Discussion



Ice nucleation on  
phase-separated  
particlesG. P. Schill and  
M. A. Tolbert

**Fig. 5.** Possible morphologies of particles after phase separation and efflorescence from Ciobanu et al. (2009): **(a)** half-sphere in a half-sphere, **(b)** half-sphere in a spherical calotte (contact angle of spherical calotte =  $77^\circ$ ), **(c)** spherical calotte in a spherical calotte (same height, contact angle of outer spherical calotte =  $77^\circ$ ), and **(d)** half of an ellipsoid in a spherical calotte (same height, contact angle of outer spherical calotte =  $77^\circ$ ). Also shown **(e)** are the calculated ratios of effloresced AS volume to the total volume for each particle morphology compared to bulk volume ratio for particles from 10–35  $\mu\text{m}$  diameter used in the present study.

Title Page

Abstract

Introduction

Conclusions

References

Tables

Figures

◀

▶

◀

▶

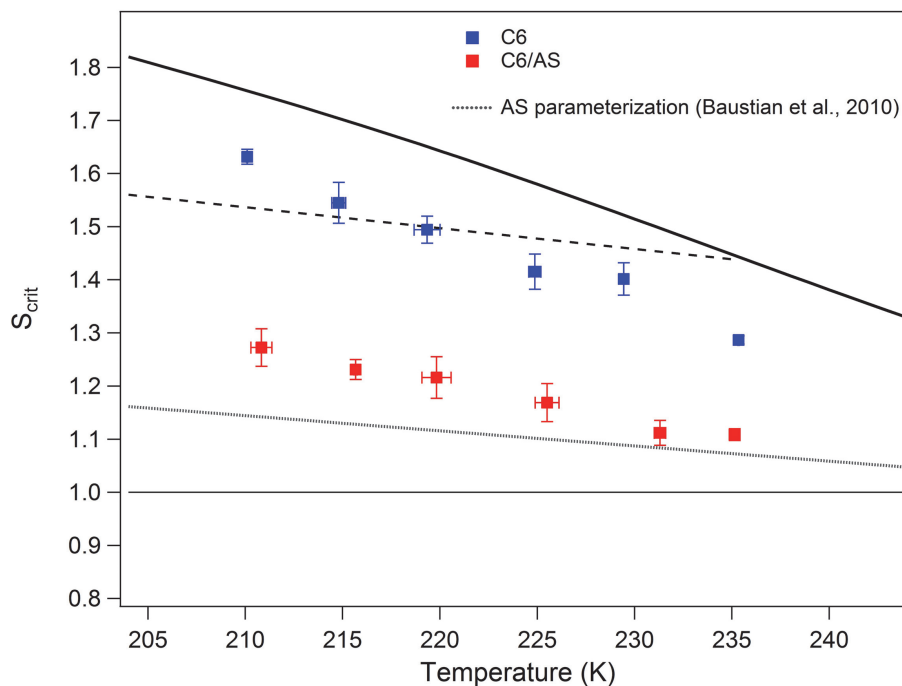
Back

Close

Full Screen / Esc

Printer-friendly Version

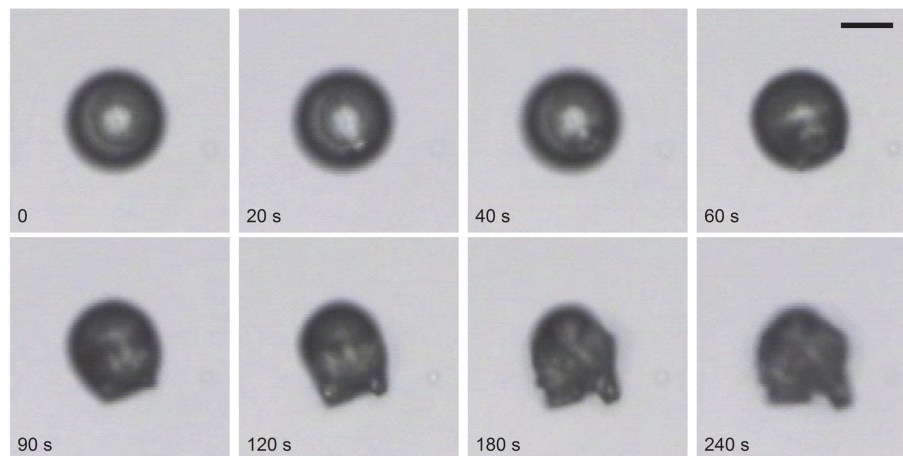
Interactive Discussion

**Ice nucleation on  
phase-separated  
particles**G. P. Schill and  
M. A. Tolbert

**Fig. 6.**  $S_{\text{crit}}$  as a function of temperature for homogeneous freezing of pure C6 and immersion freezing of C6 by the AS core (C6/AS). The thick and thin solid lines refer to water and ice saturation, respectively. The dashed line represents the  $S_{\text{crit}}$  values for homogeneous nucleation of an aqueous droplet (Koop et al., 2000). Also included is a parameterization for depositional ice nucleation on pure AS from Baustian et al. (2010), as indicated by the hatched line. Error bars in  $S_{\text{crit}}$  and temperature are reported as one standard deviation.

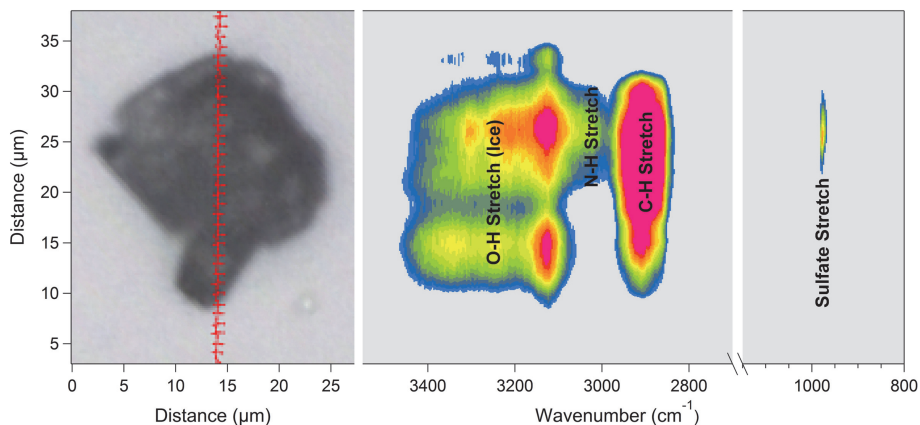
[Title Page](#)[Abstract](#)[Introduction](#)[Conclusions](#)[References](#)[Tables](#)[Figures](#)[⏪](#)[⏩](#)[◀](#)[▶](#)[Back](#)[Close](#)[Full Screen / Esc](#)[Printer-friendly Version](#)[Interactive Discussion](#)



**Ice nucleation on  
phase-separated  
particles**G. P. Schill and  
M. A. Tolbert

**Fig. 7.** Optical microscope images of ice nucleating on the effloresced AS core of a C6/AS particle that has undergone LLPS. Ice forms around 20 s at the AS-organic interface. As the ice grows beyond the dimensions of the organic shell, the shell spreads around it to reduce the surface tension over the entire system, indicating that the shell is a flowing liquid. The size bar corresponds to 10  $\mu\text{m}$ .

[Title Page](#)[Abstract](#)[Introduction](#)[Conclusions](#)[References](#)[Tables](#)[Figures](#)[⏪](#)[⏩](#)[◀](#)[▶](#)[Back](#)[Close](#)[Full Screen / Esc](#)[Printer-friendly Version](#)[Interactive Discussion](#)



**Fig. 8.** Optical microscope image and corresponding Raman line map of C6/AS/H<sub>2</sub>O-ice. Raman spectral maps, taken every 1 μm as indicated by the horizontal notches in the microscopic image, are shown as a function of distance and blended using a smoothing function. Raman intensities are shown as warm colors.

## Ice nucleation on phase-separated particles

G. P. Schill and  
M. A. Tolbert

Title Page

Abstract

Introduction

Conclusions

References

Tables

Figures

⏪

⏩

◀

▶

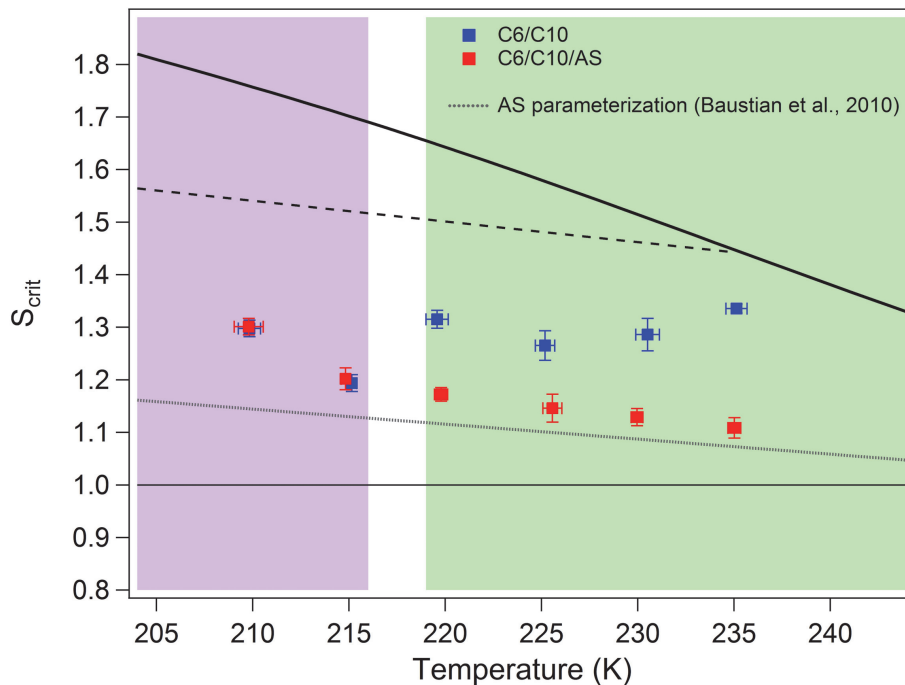
Back

Close

Full Screen / Esc

Printer-friendly Version

Interactive Discussion



**Fig. 9.**  $S_{crit}$  as a function of temperature for pure C6/C10 and C6/C10/AS. The thick and thin solid lines refer to water and ice saturation, respectively. The dashed line represents the  $S_{crit}$  values for homogeneous nucleation of an aqueous droplet (Koop et al., 2000). Also included is a parameterization for deposition ice nucleation on pure AS from Baustian et al. (2010), as indicated by the hatched line. The shaded regions split the experimental data into two viscosity regimes based on flow. Green shaded region: C6/C10 observed to flow over growing ice crystal; here we observed immersion freezing of the organic solution in contact with the AS core. Purple shaded region: C6/C10 observed to be in low-flowing, semi-solid state; here we observed depositional freezing on the C6/C10 shell. Error bars in  $S_{crit}$  and temperature are reported as one standard deviation.

**Ice nucleation on phase-separated particles**

G. P. Schill and  
M. A. Tolbert

Title Page

Abstract Introduction

Conclusions References

Tables Figures

◀ ▶

◀ ▶

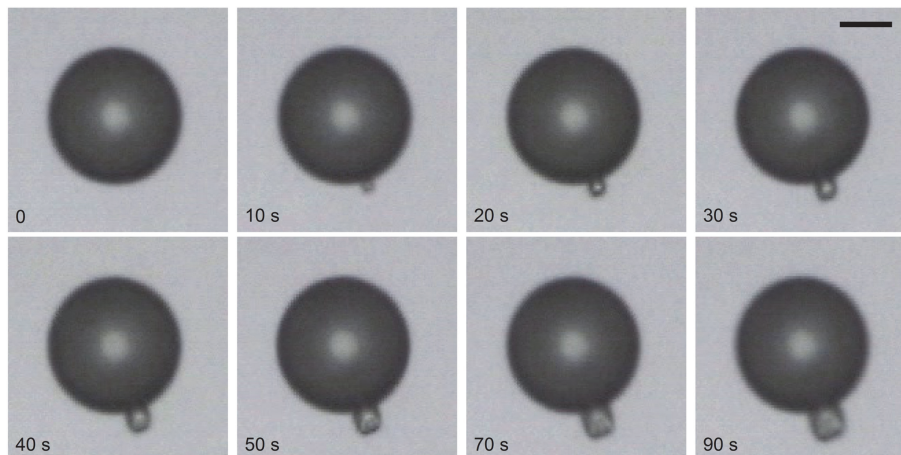
Back Close

Full Screen / Esc

Printer-friendly Version

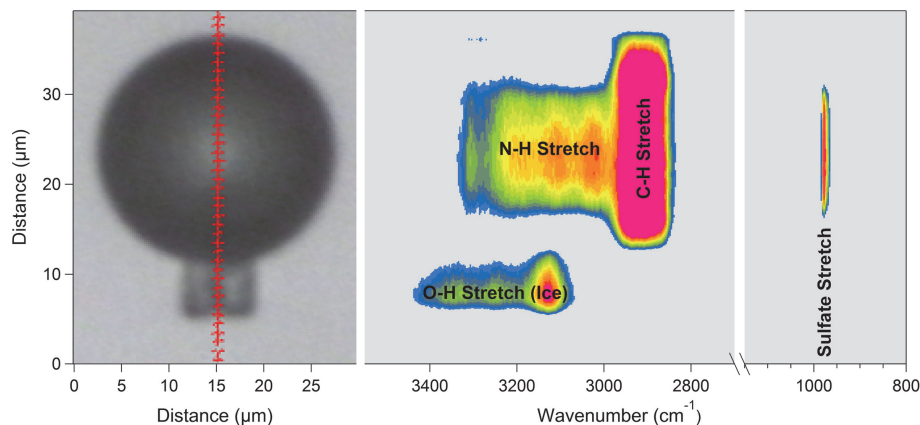
Interactive Discussion



**Ice nucleation on  
phase-separated  
particles**G. P. Schill and  
M. A. Tolbert

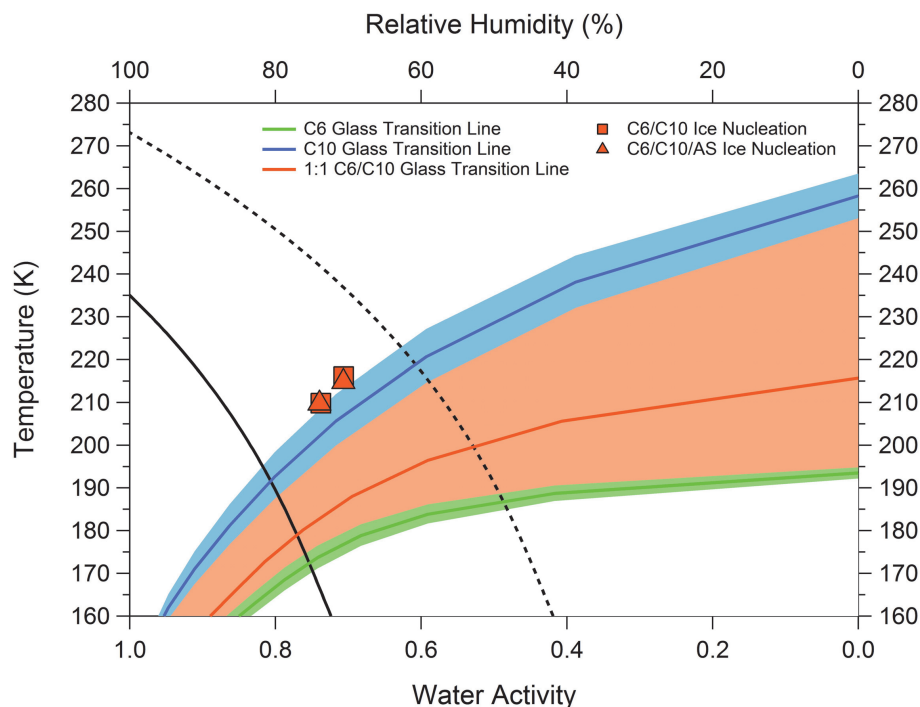
**Fig. 10.** Optical microscope images of ice nucleating on the shell of a C6/C10/AS particle that has undergone LLPS. Ice forms around 10 s at the organic-air interface. As the ice grows, the organic shell does not spread around it, indicating that it may be in a highly viscous (semi-)solid or glassy state. The size bar corresponds to 10  $\mu\text{m}$ .

[Title Page](#)[Abstract](#)[Introduction](#)[Conclusions](#)[References](#)[Tables](#)[Figures](#)[⏪](#)[⏩](#)[◀](#)[▶](#)[Back](#)[Close](#)[Full Screen / Esc](#)[Printer-friendly Version](#)[Interactive Discussion](#)

**Ice nucleation on  
phase-separated  
particles**G. P. Schill and  
M. A. Tolbert

**Fig. 11.** Optical microscope image and corresponding Raman line map of C6/C10/AS/H<sub>2</sub>O-ice. Raman spectral maps, taken every 1 μm as indicated by the horizontal notches in the microscopic image, are shown as a function of distance and blended using a smoothing function. Raman intensities are shown as warm colors.

[Title Page](#)[Abstract](#)[Introduction](#)[Conclusions](#)[References](#)[Tables](#)[Figures](#)[⏪](#)[⏩](#)[◀](#)[▶](#)[Back](#)[Close](#)[Full Screen / Esc](#)[Printer-friendly Version](#)[Interactive Discussion](#)

Ice nucleation on  
phase-separated  
particlesG. P. Schill and  
M. A. Tolbert

**Fig. 12.** The glass transition temperatures of C6, C10, and 1 : 1 C6/C10 shown as a function of water activity. The pure C6 and pure C10 glass transition curves are experimental data from Zobrist et al. (2008) using differential scanning calorimetry. The 1 : 1 C6/C10 glass transition curve was calculated using a mixing rule that depends on weight percent and molar mass. Also plotted are the conditions (temperature and RH) for depositional ice nucleation on C6/C10 and C6/C10/AS, where the organic particle/coating was visually and spectrally shown to behave like a highly viscous (semi-)solid or glass. For clarity, the ice melting curve (black dashed line) and homogeneous freezing line (black solid line, Koop et al., 2000) are also plotted.

Title Page

Abstract

Introduction

Conclusions

References

Tables

Figures

◀

▶

◀

▶

Back

Close

Full Screen / Esc

Printer-friendly Version

Interactive Discussion