

This discussion paper is/has been under review for the journal Atmospheric Chemistry and Physics (ACP). Please refer to the corresponding final paper in ACP if available.

# Four-dimensional distribution of the 2010 Eyjafjallajökull volcanic cloud over Europe observed by EARLINET

**Eyjafjallajökull  
volcanic cloud  
observed by  
EARLINET**

G. Pappalardo et al.

G. Pappalardo<sup>1</sup>, L. Mona<sup>1</sup>, G. D'Amico<sup>1</sup>, U. Wandinger<sup>2</sup>, M. Adam<sup>3</sup>, A. Amodeo<sup>1</sup>, A. Ansmann<sup>2</sup>, A. Apituley<sup>4</sup>, L. Alados Arboledas<sup>5</sup>, D. Balis<sup>6</sup>, A. Boselli<sup>1</sup>, J. A. Bravo-Aranda<sup>5</sup>, A. Chaikovskiy<sup>7</sup>, A. Comeron<sup>8</sup>, J. Cuesta<sup>9</sup>, F. De Tomasi<sup>10</sup>, V. Freudenthaler<sup>11</sup>, M. Gausa<sup>12</sup>, E. Giannakaki<sup>6,13</sup>, H. Giehl<sup>14</sup>, A. Giunta<sup>1</sup>, I. Grigorov<sup>15</sup>, S. Groß<sup>11,16</sup>, M. Haefelin<sup>17</sup>, A. Hiebsch<sup>2</sup>, M. Iarlori<sup>18</sup>, D. Lange<sup>8</sup>, H. Linné<sup>19</sup>, F. Madonna<sup>1</sup>, I. Mattis<sup>2,20</sup>, R.-E. Mamouri<sup>21</sup>, M. A. P. McAuliffe<sup>22</sup>, V. Mitev<sup>23</sup>, F. Molero<sup>24</sup>, F. Navas-Guzman<sup>5</sup>, D. Nicolae<sup>25</sup>, A. Papayannis<sup>21</sup>, M. R. Perrone<sup>10</sup>, C. Pietras<sup>17</sup>, A. Pietruczuk<sup>26</sup>, G. Pisani<sup>27</sup>, J. Preißler<sup>28</sup>, M. Pujadas<sup>24</sup>, V. Rizi<sup>18</sup>, A. A. Ruth<sup>22</sup>, J. Schmidt<sup>2</sup>, F. Schnell<sup>11</sup>, P. Seifert<sup>2</sup>, I. Serikov<sup>19</sup>, M. Sicard<sup>8</sup>, V. Simeonov<sup>29</sup>, N. Spinelli<sup>27</sup>, K. Stebel<sup>30</sup>, M. Tesche<sup>2,31</sup>, T. Trickl<sup>14</sup>, X. Wang<sup>27</sup>, F. Wagner<sup>28</sup>, M. Wiegner<sup>11</sup>, and K. M. Wilson<sup>4</sup>

<sup>1</sup>Istituto di Metodologie per l'Analisi Ambientale CNR-IMAA, C.da S. Loja, Tito Scalo, Potenza, 85050, Italy

<sup>2</sup>Leibniz-Institut für Troposphärenforschung, Leipzig, Germany

<sup>3</sup>EC Joint Research Centre, Ispra (VA), Italy

Title Page

Abstract

Introduction

Conclusions

References

Tables

Figures

◀

▶

◀

▶

Back

Close

Full Screen / Esc

Printer-friendly Version

Interactive Discussion



## Eyjafjallajökull volcanic cloud observed by EARLINET

G. Pappalardo et al.

Title Page

Abstract

Introduction

Conclusions

References

Tables

Figures



Back

Close

Full Screen / Esc

Printer-friendly Version

Interactive Discussion



<sup>4</sup>KNMI – Royal Netherlands Meteorological Institute, The Bilt, The Netherlands

<sup>5</sup>Universidad de Granada, Granada, Spain

<sup>6</sup>Aristoteleio Panepistimio, Thessalonikis, Greece

<sup>7</sup>Institute of Physics, National Academy of Sciences, Minsk, Bjelarus

<sup>8</sup>Universitat Politècnica de Catalunya, Barcelona, Spain

<sup>9</sup>LATMOS, UMR CNRS 8190, Université Pierre et Marie Curie, Paris, France and LISA, CNRS, UMR7583, Université Paris-Est Créteil and Université Paris-Diderot, Créteil, France

<sup>10</sup>Università del Salento, Department of Mathematics and Physics, Lecce, Italy

<sup>11</sup>Ludwig-Maximilians-Universität, München, Germany

<sup>12</sup>Andøya Rocket Range, Norway

<sup>13</sup>Finnish Meteorological Institute, Kuopio Unit, Finland

<sup>14</sup>Karlsruher Institut für Technologie, Garmisch-Partenkirchen, Germany

<sup>15</sup>Institute of Electronics, Bulgarian Academy of Sciences, Sofia, Bulgaria

<sup>16</sup>Deutsches Zentrum für Luft- und Raumfahrt, Institut f. Physik d. Atmosphäre, Oberpfaffenhofen, Germany

<sup>17</sup>Université Pierre et Maris Curie-Institut Pierre Simon Laplace, Paris, France

<sup>18</sup>CETEMPS, Dipartimento di Scienze Fisiche e Chimiche, Università Degli Studi dell'Aquila, Italy

<sup>19</sup>Max-Planck-Institut für Meteorologie, Hamburg, Germany

<sup>20</sup>Deutscher Wetterdienst, Meteorologisches Observatorium Hohenpeißenberg, Albin-Schwaiger-Weg 10, 82383 Hohenpeißenberg, Germany

<sup>21</sup>National Technical University of Athens, Department of Physics, Athens, Greece

<sup>22</sup>Physics Department & Environmental Research Institute, University College Cork, Cork, Ireland

<sup>23</sup>CSEM, Centre Suisse d'Electronique et de Microtechnique SA, Neuchâtel, Switzerland

<sup>24</sup>Centro de Investigaciones Energéticas, Medioambientales y Tecnológicas, Madrid, Spain

<sup>25</sup>National Institute of R&D for Optoelectronics, Magurele-Bucharest, Romania

<sup>26</sup>Institute of Geophysics, Polish Academy of Sciences, Warsaw, Poland

<sup>27</sup>Consorzio Nazionale Interuniversitario per le Scienze Fisiche della Materia, Napoli, Italy

<sup>28</sup>Universidade de Évora, Centro de Geofísica de Évora, Évora, Portugal

<sup>29</sup>Ecole Polytechnique Fédérale de Lausanne, Switzerland

<sup>30</sup>Norwegian Institute for Air Research (NILU), Kjeller, Norway

<sup>31</sup>Department of Applied Environmental Science (ITM), Stockholm University, Svante Arrhenius väg 8, 11418 Stockholm, Sweden

Received: 26 October 2012 – Accepted: 2 November 2012 – Published: 22 November 2012

Correspondence to: G. Pappalardo (pappalardo@imaa.cnr.it)

Published by Copernicus Publications on behalf of the European Geosciences Union.

**Eyjafjallajökull  
volcanic cloud  
observed by  
EARLINET**

G. Pappalardo et al.

Title Page

Abstract

Introduction

Conclusions

References

Tables

Figures



Back

Close

Full Screen / Esc

Printer-friendly Version

Interactive Discussion



## Abstract

The eruption of the Icelandic volcano Eyjafjallajökull in April/May 2010 represents a “natural experiment” to study the impact of volcanic emissions on a continental scale. For the first time, quantitative data about the presence, altitude, and layering of the volcanic cloud, in conjunction with optical information, are available for most parts of Europe derived from the observations by the European Aerosol Research Lidar Network (EARLINET). Based on multi-wavelength Raman lidar systems EARLINET is the only instrument worldwide that is able to provide dense time series of high-quality optical data to be used for aerosol typing and for the retrieval of particle microphysical properties as a function of altitude.

In this work we show the four-dimensional (4-D) distribution of the Eyjafjallajökull volcanic cloud over Europe as observed by EARLINET during the entire volcanic event (15 April–26 May 2010). All optical properties directly measured (backscatter, extinction, and particle linear depolarization ratio) are stored in the EARLINET database available at [www.earlinet.org](http://www.earlinet.org). A specific relational database providing the volcanic mask over Europe, realized ad hoc for this specific event, has been developed and is available on request at [www.earlinet.org](http://www.earlinet.org).

During the first days after the eruption, volcanic particles were detected over Central Europe within a wide range of altitudes, from the lower stratosphere down to the local Planetary Boundary Layer (PBL). After 19 April 2010, volcanic particles were detected over South and South Eastern Europe. During the first half of May (5–15 May), material emitted by the Eyjafjallajökull volcano was detected over Spain and Portugal and then over the Mediterranean and the Balkans. Last observations of the event were recorded until 25 May in Central Europe and in the Eastern Mediterranean area.

For the first time, volcanic aerosol layering and optical properties are presented and discussed for the entire volcanic event on a continental scale providing an unprecedented data set for evaluating satellite data and aerosol dispersion models for these kind of volcanic events.

### Eyjafjallajökull volcanic cloud observed by EARLINET

G. Pappalardo et al.

Title Page

Abstract

Introduction

Conclusions

References

Tables

Figures



Back

Close

Full Screen / Esc

Printer-friendly Version

Interactive Discussion



# 1 Introduction

Aerosols originating from volcanic emissions have an impact on the climate (e.g. Hansen et al., 1997; Robock, 2000; Solomon et al., 2011): sulfate and ash particles from volcanic emissions reflect solar radiation, act as cloud condensation and ice nuclei, and modify the radiative properties and lifetime of clouds, and therefore influence the precipitation cycle. These volcanic particles can also have an impact on environmental conditions and can be very dangerous for air traffic.

Lidar (light detection and ranging) techniques represent a powerful method for monitoring the dispersion of a volcanic cloud in the atmosphere because of their profiling capability. In particular, lidar techniques provide geometrical properties (top, bottom, and thickness) for each volcanic layer, optical properties (extinction, backscatter, and optical depth), aerosol typing and in some cases also microphysical properties if advanced multi-wavelength Raman lidar systems are used.

The impact of particularly violent volcanic eruptions on the stratospheric aerosol load has been studied with lidar remote sensing since the early 1970s (e.g. Jäger, 2005; Deshler et al., 2006; Deshler, 2008). The most important eruptions during this period were those of El Chichon (Mexico, 1982) and Mt. Pinatubo (Philippines, 1991). After 1996 there was a ten year period without appreciable volcanic activity which ended by the end of 2006 when a series of several eruptions injected particles into the stratosphere that were recorded with lidar systems world-wide (Mattis et al., 2010; Kravitz et al., 2011; Sawamura et al., 2012; Trickl et al., 2012). Although many lidar observations are available for volcanic aerosol in the stratosphere, only few are known for tropospheric events before 2010, such as those related to Etna volcanic eruptions in 2001 and 2002 (Pappalardo et al., 2004a; Villani et al., 2006; Wang et al., 2008).

The Eyjafjallajökull volcano in Iceland (63.63° N, 19.60° W, 1666 m a.s.l.) entered an explosive eruptive phase on 14 April 2010 and this event lasted until 21 May 2010 (Langmann et al., 2012). In the proximity of the volcano, the eruption plume reached variable maximum height (between 2 and 9.3 km a.s.l.; Arason et al., 2011) during this

## Eyjafjallajökull volcanic cloud observed by EARLINET

G. Pappalardo et al.

Title Page

Abstract

Introduction

Conclusions

References

Tables

Figures



Back

Close

Full Screen / Esc

Printer-friendly Version

Interactive Discussion



**Eyjafjallajökull  
volcanic cloud  
observed by  
EARLINET**

G. Pappalardo et al.

Title Page

Abstract

Introduction

Conclusions

References

Tables

Figures



Back

Close

Full Screen / Esc

Printer-friendly Version

Interactive Discussion



period. Depending on the wind direction, the eruption plume was transported toward different regions of Continental Europe and toward the Atlantic Ocean at different altitudes. Even though this eruption was only moderate in intensity, it had a strong impact on air traffic. In order to prevent possible damages to aircraft engines, the airspace over large parts of Northern Europe was closed on 15 April when the first parts of the eruption plume reached Continental Europe. Air traffic restrictions and partial closure of European airspace were not uniform during the eruption period and differed from region to region depending on the volcanic ash transport pattern and the (sparse) information on height and density of volcanic aerosol at the time.

The first characterization of the volcanic ash cloud was provided by Ansmann et al. (2010) relying on EARLINET lidar observations at Leipzig and Munich, Germany. EARLINET, the European Aerosol Research Lidar Network (Bösenberg et al., 2001), performed almost continuous measurements from 15 April 2010 in order to follow the evolution of the volcanic cloud over Europe.

During the event (14 April–26 May 2010), the volcanic cloud was transported to different regions of Europe at different altitudes and times and with a large variety in load. Volcanic particles were first observed in the UK, Ireland, The Netherlands, Germany, and France from very low altitudes up to the upper troposphere (e.g. Ansmann et al., 2011; Pappalardo et al., 2010a; Schumann et al., 2011; Hervo et al., 2012; Matthias et al., 2012). The volcanic cloud was then observed over Switzerland, Poland, and Norway (Pietruczuk et al., 2010; Schumann et al., 2011). The cloud reached Italy and Greece after 19 April (Mona et al., 2012; Papayannis et al., 2012). In May 2010, the volcanic cloud was transported over the Iberian Peninsula (Sicard et al., 2012; Navas-Guzmán et al., 2012) and then moved towards the East, reaching Italy, Greece, and Turkey (Mona et al., 2012; Perrone et al., 2012; Papayannis et al., 2011). A series of publications covered the in-depth characterization of the ash cloud over different parts of Europe combining measurements of lidars, sun photometers, and in-situ probes. Schumann et al. (2011) reported on measurements onboard the German research aircraft Falcon that covered several flights over Central Europe, Iceland, and the North

**Eyjafjallajökull  
volcanic cloud  
observed by  
EARLINET**

G. Pappalardo et al.

[Title Page](#)[Abstract](#)[Introduction](#)[Conclusions](#)[References](#)[Tables](#)[Figures](#)[⏪](#)[⏩](#)[◀](#)[▶](#)[Back](#)[Close](#)[Full Screen / Esc](#)[Printer-friendly Version](#)[Interactive Discussion](#)

Sea. Groß et al. (2011) demonstrated the potential of lidar-derived intensive aerosol properties to distinguish volcanic aerosol from other types. Further aircraft observations of the volcanic cloud including an on board lidar were performed over France (Chazette et al., 2012) and the UK (Marenco et al., 2011). Wiegner et al. (2012) demonstrated the benefit of lidar observations for the validation of the spatial distribution and mass concentration as calculated by a chemistry-transport model. The derivation of mass concentration as the most relevant property for air safety issues using data of advanced EARLINET-type lidars and sun photometers was covered in detail by Ansmann et al. (2011), Gasteiger et al. (2011), and Sicard et al. (2012). Despite the limited revisit time and field of view, also CALIOP, the backscatter lidar carried on the CALIPSO satellite, observed the volcanic cloud (Winker et al., 2012). Scientific literature for this event is related to specific cases studied in detail (e.g. Ansmann et al., 2010; Gasteiger et al., 2011; Schumann et al., 2011; Marenco and Hogan, 2011) or specific regions (e.g. Flentje et al., 2010; Ansmann et al., 2011; Bukowiecki et al., 2011; Emeis et al., 2011; Groß et al., 2011; Schäfer et al., 2011; Chazette et al., 2012; Hervo et al., 2012; Mona et al., 2012; Papayannis et al., 2012; Sicard et al., 2012). A study presenting profiling observations for the whole volcanic event on a continental scale has not been published yet.

In this publication, we report the results regarding the distribution of the volcanic cloud over Europe as directly observed by the EARLINET lidar network for the entire Eyjafjallajökull volcanic event (15 April–26 May 2010). Volcanic particle layers have been identified for all the EARLINET stations using a specific methodology of a volcanic aerosol mask (Mona et al., 2012).

EARLINET observations performed during the Eyjafjallajökull eruption event are described in Sect. 2. A brief overview of the volcanic event is provided in Sect. 3. The volcanic aerosol masking is presented in Sect. 4, and results of the 4-dimensional distribution of the volcanic cloud are discussed in Sect. 5. More details for using the relational database providing the volcanic mask over Europe are reported in the Appendix and finally a summary is given in Sect. 6.

## 2 EARLINET and its observations during the volcanic event

EARLINET, established in 2000, is the first coordinated aerosol lidar network whose key remit is the provision of a comprehensive, quantitative, and statistically significant database on the spatial and temporal aerosol distribution on a continental scale (Bösenberg, et al., 2001). At present, the network includes 27 stations distributed over Europe (see Fig. 1). More information about EARLINET can be found at [www.earlinet.org](http://www.earlinet.org).

Lidar observations within the network are performed on a regular schedule of one daytime measurement per week around local noon, when the boundary layer is usually well developed, and two night time measurements per week, with low background light, in order to perform Raman extinction measurements. The corresponding data set is used to obtain unbiased information for climatological studies (Matthias et al., 2004a). In addition to the routine measurements, further observations are devoted to monitoring of special events such as Saharan dust outbreaks (Ansmann et al., 2003; Mona et al., 2006; Papayannis et al., 2008; Guerrero-Rascado et al., 2009; Wiegner et al., 2011), forest fires (Müller et al., 2007; Amiridis et al., 2009), photochemical smog (Carnuth et al., 2002) mixed with biomass burning particles (Mamouri et al., 2012), and volcanic eruptions (Pappalardo et al., 2004a; Wang et al., 2008; Mattis et al., 2010). Moreover EARLINET started correlative measurements for CALIPSO in June 2006 (Pappalardo et al., 2010b).

Data quality has been assured by inter-comparisons at instrument level using the available transportable systems (Matthias et al., 2004b; Freudenthaler et al., 2010). Data quality assurance also includes the inter-comparison of group-specific retrieval algorithms for both backscatter and Raman lidar data (Böckmann et al., 2004; Pappalardo et al., 2004b). Based on well-defined common standards, the routinely performed quality-assurance exercises of lidar instruments and algorithms ensure that the data products provided by the individual stations are homogenous and continuously of

### Eyjafjallajökull volcanic cloud observed by EARLINET

G. Pappalardo et al.

Title Page

Abstract

Introduction

Conclusions

References

Tables

Figures



Back

Close

Full Screen / Esc

Printer-friendly Version

Interactive Discussion



highest possible reliability. Efforts to guarantee and improve the quality of data derived from observations in EARLINET are continue (Freudenthaler et al., 2010).

EARLINET measurements have been performed since 1 May 2000 (Matthias et al., 2004a). All measured profiles are stored in a standardized data format in a centralized database which allows for easy access to the complete data set for further scientific studies. Presently, the EARLINET database represents the largest collection of ground-based data of the vertical aerosol distribution on a continental scale.

For the occurrence of special atmospheric events an alerting system has been implemented in EARLINET. In the case of the volcanic eruption of Eyjafjallajökull an alert was sent to the whole network on 15 April 2010. The alert was based on information from different sources: (i) the Icelandic Meteorological Office Bulletin for the daily status of the volcanic event, (ii) the ash dispersion models provided by the volcanic ash advisory center (VAAC, <http://www.metoffice.gov.uk/aviation/vaac/vaacuk.vag.html>), (iii) the European air pollution dispersion (EURAD) model ([http://www.eurad.uni-koeln.de/index\\_e.html](http://www.eurad.uni-koeln.de/index_e.html)), and (iv) available satellite data (as those provided by MODIS, SEVIRI, OMI, CALIPSO). From 15 April 2010 almost continuous measurements were performed within EARLINET coordinated by daily alerts. Thus, the evolution of the volcanic cloud was monitored, providing a four-dimensional distribution of the volcanic cloud over Europe for the entire event. Even though the EARLINET observations were initially driven by scientific interest it became obvious after a few days that the information obtained from the coordinated effort of the network would be very useful for European aviation authorities. A page with the quicklook data of the lidar range-corrected signals was made available on the EARLINET web site in order to provide near-real-time qualitative information about the presence and altitudes of the volcanic cloud over Europe. The quicklooks were accompanied with a measurement report (updated daily) to explain the significance of the data at the time. Direct links with the World Meteorological Organization (WMO) and national agencies responsible for the flight zone safety were established.

**Eyjafjallajökull  
volcanic cloud  
observed by  
EARLINET**

G. Pappalardo et al.

Title Page

Abstract

Introduction

Conclusions

References

Tables

Figures



Back

Close

Full Screen / Esc

Printer-friendly Version

Interactive Discussion



Discussion Paper | Discussion Paper | Discussion Paper | Discussion Paper

Despite the fact that EARLINET stations are not truly operational, the lidar systems were run almost continuously, weather permitting, and more than 5000 h of measurements were performed day and night during the period 15 April–26 May 2010. For the first time, an aerosol mask and the 4-D distribution on a continental scale was obtained for a volcanic eruption. The large amount of coordinated observations yielded an unprecedented data set that is to be used in conjunction with satellite data for the evaluation and improvement of aerosol dispersion models.

### 3 Overview of the event

Eyjafjallajökull is one of the smallest glaciers in Iceland. After seismic activity recorded during December 2009, a first eruption started on 20 March 2010, between 22:30 and 23:30 UTC. After a brief stop, a new phase of the Eyjafjallajökull eruption started around midnight on 14 April, when melt water penetrated to the central crater beneath the glacier. After a short hiatus in eruptive activity a new set of craters opened up in the early morning of 14 April under the volcano's ice-covered central summit caldera. Melt water started to emanate from the ice cap around 07:00 UTC on 14 April, and an eruption plume was observed in the early morning.

The ash-loaded eruption plume rose to more than 10 km height, deflected to the east by westerly winds. The height of the emitted plume was around 8 km until 16 April and decreased to a typical maximum height of 3–4 km in the following days (Arason et al., 2011). The plume rose up again to an altitude of 5–6 km in the period of 4–20 May (Langmann et al., 2012).

Figure 1 shows the approximate distribution of the volcanic cloud in the 3–5 km height range over Europe during the first week after the major eruption on 14 April, together with the location of the EARLINET stations. The illustration is based on the EURAD (EUROPEAN Air Pollution Dispersion) forecast provided on the web site daily during the event and is in reasonable agreement with other model results from FLEXPART (Stohl et al., 2011), VAAC, and COSMO-MUSCAT (Heinold et al., 2012). In general,

## Eyjafjallajökull volcanic cloud observed by EARLINET

G. Pappalardo et al.

Title Page

Abstract

Introduction

Conclusions

References

Tables

Figures

⏪

⏩

◀

▶

Back

Close

Full Screen / Esc

Printer-friendly Version

Interactive Discussion



Discussion Paper | Discussion Paper | Discussion Paper | Discussion Paper | Discussion Paper

good agreement between the EURAD model forecast and the EARLINET observations regarding the time of the plume arrival was found. The EURAD dispersion simulation provided online was of great value for steering the ground-based observations during the event.

5 On 15 April the eruption plume reached Continental Europe, causing closure of the airspace over large parts of Northern Europe. On the same day at 10:00 UTC an alert from CNR-IMAA, Potenza, was sent to all EARLINET stations informing them about a large amount of ash being transported towards the northwest of Europe. Almost all EARLINET stations promptly started continuous measurements, whenever weather  
10 conditions allowed it.

A first volcanic layer was observed at an altitude of ca. 3 km and up to 6 km over Hamburg in the early morning of 16 April. On the morning of 16 April, the major ash plume reached Central Europe (Germany and France) at 5–6 km a.s.l. and Belarus at ca. 4 km a.s.l. The volcanic cloud crossed Central and Eastern Europe on 16 and 17 April  
15 (see Fig. 1, dark red and light red areas). Most EARLINET stations discovered a distinct feature at that time. The layer appeared first at 5–8 km a.s.l. and then decreased with time. Finally, volcanic aerosol was mixed into the local planetary boundary layer (PBL). After 17 April the volcanic plume was dispersed towards Western and Eastern Europe. The transport to the south was almost completely blocked by the Alps until 19  
20 April when a redistribution of aged volcanic aerosol from west to east and from north to south occurred (see Fig. 1, orange area). On 20 April Italian EARLINET stations observed a clear signature of the plume for the first time. Afterwards, the plume was further dispersed across Europe and reached Greece on 21 April (see Fig. 1, yellow area).

25 The volcanic plume persisted over Central Europe for the whole period of 15–26 April, even though with different aerosol load. Only small amounts of material were emitted by Eyjafjallajökull between 19 April and 3 May (see, e.g. Fig. 2 in Schumann et al., 2011). However, new significant eruptions occurred from 4–9 May and 14–19 May. The first of these phases mainly influenced Western Europe, from Great Britain

**Eyjafjallajökull  
volcanic cloud  
observed by  
EARLINET**

G. Pappalardo et al.

Title Page

Abstract

Introduction

Conclusions

References

Tables

Figures



Back

Close

Full Screen / Esc

Printer-friendly Version

Interactive Discussion



to the Iberian Peninsula. EARLINET stations in Spain and Portugal reported the arrival of first volcanic layers on 5 May (Sicard et al., 2012; Navas-Guzmán et al., 2012). On 16 May, a distinct ash plume travelled over Great Britain toward Central Europe again and reached the Central European EARLINET stations in The Netherlands and Germany in the night of 16–17 May (see, e.g. Figs. 14, 15, and 18 in Schumann et al., 2011). Volcanic layers were observed in Central Europe and in the Central and Eastern Mediterranean area on 18–22 May. Last observations of the event were recorded over Central Europe by 25 May.

#### 4 Volcanic aerosol mask

A volcanic aerosol mask has been generated based on all EARLINET observations performed during the Eyjafjallajökull eruption (15 April–26 May 2010). The methodology for obtaining the mask is specific to this kind of event and was applied to the whole network. The approach is based on aerosol layer identification using only aerosol backscatter coefficients at one wavelength, so that daytime measurements could be included in the study and potential observational limitations of some stations were eliminated. The aerosol backscatter coefficient at the longest available wavelength was used for the layering, thereby taking advantage of the better sensitivity to the aerosol structure at longer wavelengths. For aerosol typing, backward trajectory analyses and model outputs were used together with the multi-wavelength Raman lidar measurements performed within the network during this event. The aerosol mask methodology provides snapshots of distinguishable aerosol type distributions over Europe with one hour temporal and high vertical resolution and unprecedented sensitivity to aerosol presence.

The mask was generated with a temporal resolution of 1 h in order to be able to compare the dataset directly with results from models (e.g. ECMWF) which typically provide data with a one-hour time resolution. The volcanic mask is provided with the best possible effective vertical resolution, as determined individually by each group

### Eyjafjallajökull volcanic cloud observed by EARLINET

G. Pappalardo et al.

Title Page

Abstract

Introduction

Conclusions

References

Tables

Figures



Back

Close

Full Screen / Esc

Printer-friendly Version

Interactive Discussion



## Eyjafjallajökull volcanic cloud observed by EARLINET

G. Pappalardo et al.

Title Page

Abstract

Introduction

Conclusions

References

Tables

Figures

⏪

⏩

◀

▶

Back

Close

Full Screen / Esc

Printer-friendly Version

Interactive Discussion

within EARLINET, typically between 15 and 180 m. Only backscatter data with a relative statistical error lower than 50 % are considered in order to gain a reliable aerosol mask. The aerosol mask methodology is described in detail by Mona et al. (2012). The most relevant points are therefore only summarized here in brief.

5 The first step is the layer identification through the first derivative of the particle backscatter profiles. At altitudes where the derivative method is not applicable, because the signal-to-noise ratio is too low, layers are identified as those regions where the scattering ratio (i.e. the total-to-molecular backscatter ratio) is higher than a pre-defined threshold chosen as the value for typical aerosol background conditions plus  
10 15 %.

The second step in the procedure is to perform a rigorous cloud screening to the data and to assign an aerosol type to each identified layer. Backward trajectory analyses and model outputs are used to investigate the origin and nature of the identified aerosol layers. In particular, ten-day HYSPLIT backtrajectory analysis provided by NOAA (Draxler and Rolph, 2012; Rolph, 2012) is used, because the arrival altitudes and times could be chosen in a flexible way which makes it very useful for a study on aerosol typing based on lidar data with high vertical and temporal resolution. In addition, German Meteorological Service (DWD), FLEXTRA (Stohl et al., 1995; Stohl, 1998), and NASA/Goddard (Schoeberl and Newman, 1995) backtrajectory analyses are used to check further the  
15 validity of the aerosol source identification. In particular, four-day backward DWD trajectories for two arrival times per day and for six arrival pressure levels between 200 and 975 hPa as well as four-day backward FLEXTRA trajectories arriving at altitudes of 1500, 3000, and 5000 m every six hours are available for each EARLINET site. For EARLINET stations that are also AERONET sites, the backtrajectory analysis developed by the Atmospheric Chemistry and Dynamics Branch of NASA/Goddard are  
20 available at 00:00 UTC and 12:00 UTC and were used for eight height levels between 950 hPa and 200 hPa.

Once the particle path is identified through backtrajectory analysis, the type of the aerosol is investigated using model output and the support of the multi-wavelength

Raman lidar measurements performed within the network. The Eyjafjallajökull volcanic activity and emission heights are also taken into account by using the reports provided by the Iceland Meteorological Office, VAAC, and dedicated studies (e.g. Langmann et al., 2012).

5 Many types of aerosol may have been present over Europe during the whole eruptive period. Specific models and satellite observations are used in order to check the occurrences of other specific aerosol-related events along the identified aerosol paths. The potential presence of Saharan dust for instance is checked using the Dust REgional Atmospheric Model (DREAM) forecasts in terms of maps of the dust  
10 loading and dust concentration profiles at each EARLINET site, both available every six hours (<http://www.bsc.es/projects/earthscience/BSC-DREAM>). The results of the ATSR World Fire Atlas (available at <http://due.esrin.esa.int/wfa/>) are used for identifying the presence of forest-fire episodes. Cases with backtrajectories that are locally confined and without the presence of any specific source resulted in aerosol being  
15 classified as continental. For all the other cases with uncertain situations, aerosol is classified as “unknown”. All possible mixings among these types of aerosol are also taken into account.

As far as volcanic aerosol is concerned, it should be noted that aerosol layers identified through this approach could consist of different ash and sulfate mixing ratios  
20 for different sites. Moreover, the observed particles of volcanic origin may be affected by modification processes and mixing with other air masses during transport. Aerosol layers, for which other aerosol sources can be identified besides the Eyjafjallajökull volcano, are classified as mixed aerosols.

The particle layer identification and typing is performed for each station on individual backscatter profiles. A consistency check is carried out on the temporal evolution  
25 of the resulting layering for each station. A further check is performed by taking advantage of the geographical distribution of EARLINET stations. In particular, stations located at relatively short distances (below 500 km) from each other can be considered representative for a specific region, giving us the opportunity to study also local

**Eyjafjallajökull  
volcanic cloud  
observed by  
EARLINET**

G. Pappalardo et al.

Title Page

Abstract

Introduction

Conclusions

References

Tables

Figures

⏪

⏩

◀

▶

Back

Close

Full Screen / Esc

Printer-friendly Version

Interactive Discussion



phenomena. When a doubtful atmospheric scenario is observed in a specific region, multi-wavelength Raman lidar data, including lidar ratio, Ångström exponent, and particle linear depolarization ratio, from at least one close station are used as additional information supporting aerosol typing.

5 Four interesting examples of the overall event in terms of aerosol content at different locations and different phases of the volcanic cloud transport over Europe have been selected to better illustrate the methodology (see Figs. 2–5). Each of these is considered as a representative example (EX) for other aerosol occurrence and transport scenarios during the event: (EX1) almost direct transport towards Central Europe during the first phase of the eruption; (EX2) co-presence of dust and volcanic aerosol over France and other Mediterranean countries during the first phase of the eruption; 10 (EX3) almost direct transport over the Iberian Peninsula at the beginning of May; (EX4) transport towards Central Europe at the end of May.

For each example, the aerosol mask is reported providing in particular the following 15 information:

1. Minimum and maximum altitudes covered in measurements. These can vary for each site depending on the corresponding lidar instrument performances and atmospheric conditions.
2. PBL height (as derived directly by the lidar signals) (Steyn et al., 1999)
- 20 3. Volcanic aerosol layers are reported in shades of grey. Different shades of grey refer to different aerosol backscatter values ( $\beta_\lambda$ ) (dark grey:  $\beta_{532} > 1 \times 10^{-6} \text{ m}^{-1} \text{ sr}^{-1}$ ; grey:  $1 \times 10^{-7} < \beta_{532} < 1 \times 10^{-6} \text{ m}^{-1} \text{ sr}^{-1}$ ; light grey:  $\beta_{532} < 1 \times 10^{-7} \text{ m}^{-1} \text{ sr}^{-1}$ ; dark grey:  $\beta_{1064} > 5 \times 10^{-7} \text{ m}^{-1} \text{ sr}^{-1}$ ; grey:  $5 \times 10^{-8} < \beta_{1064} < 5 \times 10^{-7} \text{ m}^{-1} \text{ sr}^{-1}$ ; light grey:  $\beta_{1064} < 5 \times 10^{-8} \text{ m}^{-1} \text{ sr}^{-1}$ ). No distinction between ash particles and smaller non-ash particles (mainly sulfate aerosol) of volcanic origin is made. The grey layers contain both of these components of aerosol, originating from the volcanic eruption and then eventually being subject to modifications that occur during the transport across the European continent.

30217

**Eyjafjallajökull  
volcanic cloud  
observed by  
EARLINET**

G. Pappalardo et al.

Title Page

Abstract

Introduction

Conclusions

References

Tables

Figures



Back

Close

Full Screen / Esc

Printer-friendly Version

Interactive Discussion



4. Aerosol types: aerosol in the PBL (mainly local) is reported in yellow; continental aerosol in dark yellow, forest fires in light green; desert dust in orange; cloud/cirrus in cyan; volcanic mixing cases are shown in magenta. If the identification of the origin of particles in a layer was not possible, the corresponding aerosol was classified as unknown (purple).

#### 4.1 EX1

The first example refers to the lidar observations performed at the EARLINET station in Hamburg, Germany, in the period 16–25 April 2010, i.e. during the initial phase of the volcanic event. The corresponding aerosol mask is shown in Fig. 2, where volcanic particles are represented in different shades of grey depending on the corresponding aerosol load. All other aerosol types, also mixed ones, are represented by different colours. The peak backscatter coefficients above Hamburg on April 16 are the highest found for the entire plume (see further below). Figure 2 clearly shows that volcanic particles were typically observed over the entire altitude range sounded by the lidar instrument. In particular, the intrusion of volcanic particles into the PBL appears to be very common for this station during this period. Direct injection of volcanic particles from Iceland into the PBL as well as transport of volcanic particles at higher altitudes (e.g. see data around 09:00 UTC on 23 April) was observed. During the night of 24–25 April when air masses reaching Hamburg in the free troposphere arrived from over the Atlantic Ocean and the United States. It was not possible to identify a specific source of the observed aerosol which is therefore labelled as unknown. No layers are reported in the mask for some times since the aerosol backscatter retrieval was not possible due to the presence of low clouds. The temporal behaviour of the top altitude of the volcanic layer is exclusively related to the difference between daytime and night-time conditions. During night-time the statistical error of the aerosol backscatter coefficient is lower than for data taken during daytime for a given altitude. This means that because of the pre-defined threshold for the statistical error (50 %), the layer identification algorithm

**Eyjafjallajökull  
volcanic cloud  
observed by  
EARLINET**

G. Pappalardo et al.

Title Page

Abstract

Introduction

Conclusions

References

Tables

Figures



Back

Close

Full Screen / Esc

Printer-friendly Version

Interactive Discussion





operates as expected only for a lower altitude range during daytime compared to nighttime.

## 4.2 EX2

Figure 3 shows the aerosol mask for Palaiseau, France, for the period 23–24 April 2010. This is a very interesting period of the eruption event where Saharan dust above 4 km and a layer of volcanic particles beneath it was observed. Intrusion into the PBL was observed on 23 April starting at 11:00 UTC when the top altitude of the PBL rose while volcanic particles entered into the PBL. A mixed aerosol layer consisting of volcanic particles and Saharan dust was then observed on the evening of 23 April when the Saharan dust layer started to decrease in altitude merging with the volcanic aerosol layer.

## 4.3 EX3

During most of the volcanic eruption period, the Iberian Peninsula was not affected by the presence of the volcanic cloud. The only exception was a ten-day period in May during which the wind transported volcanic particles directly toward Spain and Portugal. Figure 4 shows the volcanic aerosol mask over Granada, Spain, for the period 5–7 May 2010. This example shows a situation where volcanic particles were observed almost over the entire altitude range covered by the lidar instrument and intrusion into the PBL was also observed. Mixing of volcanic with local and dust particles was observed for the whole period up to an altitude of ca. 3 km. Above 3 km, the particle linear depolarization ratio was measured to be around 7%. The values of 4%–5% for the lower layer suggest the mixing of volcanic particles with other particles (Navas-Guzmán et al., 2012; Sicard et al., 2012).

**Eyjafjallajökull  
volcanic cloud  
observed by  
EARLINET**

G. Pappalardo et al.

Title Page

Abstract

Introduction

Conclusions

References

Tables

Figures



Back

Close

Full Screen / Esc

Printer-friendly Version

Interactive Discussion



## 4.4 EX4

In the final part of the 2010 Eyjafjallajökull eruption period, the volcanic cloud was mainly transported over Central Europe and subsequently into the Central Mediterranean region. Figure 5 shows the volcanic aerosol mask for Cabauw, The Netherlands, for the period 17–20 May 2010. As for the Hamburg example, volcanic particles were observed over the entire altitude range covered by the instrument. The strongest feature is located at about 5 km a.s.l. around 18:00 UTC on 17 May. This layer slightly decreased in altitude in the following hours down to 3.5 km a.s.l. around 20:00 UTC on 18 May. The layers reported as purple are aerosol layers of unknown type. The identification was not possible, because at these altitudes air masses arrived from the east after passing over Southern Europe and sometimes also North Africa. This complex transport scenario prevented a clear identification of the aerosol sources to date.

## 5 Results: 4-D distribution of volcanic aerosol over Europe

The methodology described in Sect. 4 was applied to all EARLINET data provided individually by each station with the required 1-h temporal averaging. In this way, information about the aerosol layering and types within the whole network was gathered. Geometrical properties of the volcanic cloud over Europe are presented with high resolution (typically 15–180 m) in terms of the base and top of the volcanic layer. Once the top and the base of a layer are identified, the center of mass of the aerosol layer can be also estimated from lidar profiles. Information about the center of mass of the aerosol layer is useful because the dynamics of the whole layer can be described at this location. Assuming the microphysical properties to be homogenous within an aerosol layer, the center of mass can be estimated as the mean altitude of the identified layer weighted by the altitude-dependent aerosol backscatter coefficient (Mona et al., 2006). Due to the large number of performed measurements the arrival of volcanic cloud over

ACPD

12, 30203–30257, 2012

### Eyjafjallajökull volcanic cloud observed by EARLINET

G. Pappalardo et al.

Title Page

Abstract

Introduction

Conclusions

References

Tables

Figures

⏪

⏩

◀

▶

Back

Close

Full Screen / Esc

Printer-friendly Version

Interactive Discussion

Europe could be timed very accurately. Information about cases of mixing with other aerosol types and intrusions into the local PBL was gathered.

Results are grouped into clusters representing five geographical regions: Central Europe (Fig. 6), Central Mediterranean (Fig. 7), Western Mediterranean (Fig. 8), Eastern Mediterranean (Fig. 9), and Eastern Europe (Fig. 10). For each cluster, the temporal evolution of the volcanic layer is reported for each station for which a long record of data is available. Stations are listed in order of decreasing latitude, i.e. from north (top) to south (bottom) for each cluster. Further data from other stations (Andoya, Cork, Garmisch-Partenkirchen, Neuchatel, Payerne, Sofia, Barcelona, and Madrid) are not shown in the figures, but are available in the EARLINET database.

Starting from 15 April, 00:00 UTC, the following quantities are provided hourly: center of mass of the identified volcanic layer (multiple layers are regarded as a unique extended layer), base and top of the identified volcanic layer. These quantities are shown as black dots, black lines, and cyan lines, respectively. Scenarios where a layer with volcanic aerosol mixed with another kind of aerosol are noted as well. For these cases the center of mass of the mixed layer is indicated. Mixings with dust and continental aerosol are highlighted by orange and dark yellow symbols, respectively. Mixing with local aerosol above the PBL is reported in green. The intrusion into the PBL and the subsequent mixing with local aerosol is indicated by magenta crosses located at the top of the PBL.

All cirrus clouds have been removed following the methodology described above, even though the presence of volcanic particles within the cirrus clouds cannot be ruled out and probably occurred regularly in the time period concerned. However, this aspect is outside the scope of the current publication and a devoted study related to cloud properties during the volcanic event would be required to address this issue. Some publications report specific cases (Seifert et al., 2011; Hoyle et al., 2011; Steinke et al., 2011; Bingemer et al., 2012; Rolf et al., 2012) but neither for all of Europe nor for the entire period of the eruption.

**Eyjafjallajökull  
volcanic cloud  
observed by  
EARLINET**

G. Pappalardo et al.

Title Page

Abstract

Introduction

Conclusions

References

Tables

Figures



Back

Close

Full Screen / Esc

Printer-friendly Version

Interactive Discussion



---

**Eyjafjallajökull  
volcanic cloud  
observed by  
EARLINET**G. Pappalardo et al.

---

[Title Page](#)[Abstract](#)[Introduction](#)[Conclusions](#)[References](#)[Tables](#)[Figures](#)[⏪](#)[⏩](#)[◀](#)[▶](#)[Back](#)[Close](#)[Full Screen / Esc](#)[Printer-friendly Version](#)[Interactive Discussion](#)

Finally, a red line is shown on the abscissa axes of the figures for hours when no measurements were performed. This situation typically arose during adverse weather conditions, but sometimes also because of technical problems. It should be noted that the network is not designed to be fully operational around the clock and that intensive measurement series lasting for more than one month imply a considerable effort for most of the stations.

Geometrical and optical properties of the volcanic layers are reported for each cluster in Table 1. Specifically, median values and minimum/maximum range values of base, top, center of mass, aerosol backscatter coefficient, and integrated backscatter at 532 nm are provided together with the maximum aerosol backscatter coefficient value (peak value) with corresponding altitude, location, and time. The aerosol backscatter coefficient at 532 nm has been chosen because it is available in each cluster.

During the first period (15–26 April) all stations within the Central Europe cluster (Hamburg (hh), Cabauw (ca), Leipzig (le), Palaiseau (pl), and Maisach (ms)) observed volcanic particles (see Fig. 6). Clouds were also very frequently observed. Low clouds over Cabauw often did not permit lidar data inversion. In the successive periods substantial cloud cover and rain limited the possibility to perform measurements, hence data had to be taken more sporadically. The center of mass of the volcanic layer was typically around 3–3.5 km for all stations apart from Maisach where it remained at about 2.5 km. Intrusion into the PBL was a common feature for almost all observations. In the case of Maisach the volcanic layer came into contact with the boundary layer during the afternoon of 17 April. The process of mixing of the ash with locally produced aerosol was investigated with a very high temporal resolution of one hour (Groß et al., 2011). The state of mixing was determined from the particle linear depolarization ratio applying a methodology proposed by Shimizu et al. (2004) and Tesche et al. (2009). Similar studies were also performed for three sites in Germany (Ansmann et al., 2011).

A peculiar feature was present over the Hamburg, Palaiseau, and Maisach stations during the first arrival of the volcanic cloud: a volcanic layer rapidly decreasing with altitude from 6 to ca. 3 km a.s.l. This phenomenon was associated with an air-mass

**Eyjafjallajökull  
volcanic cloud  
observed by  
EARLINET**

G. Pappalardo et al.

Title Page

Abstract

Introduction

Conclusions

References

Tables

Figures

⏪

⏩

◀

▶

Back

Close

Full Screen / Esc

Printer-friendly Version

Interactive Discussion



propagation on the east side of an anti-cyclone, accompanied also by a stratospheric air intrusion documented by daily forecasts, similarly to those described by Stohl et al. (2003), Zanis et al. (2003) and Trickl et al. (2010). This behaviour became in some sense the signature of the Eyjafjallajökull plume as it was presented and discussed at many conferences and specific related events. However, as emphasized in this publication, the presence of the volcanic plume was not always associated with this kind of time/altitude behaviour as many different scenarios were observed over Europe. The Hamburg, Palaiseau, and Maisach stations observed the plume descent almost at the same altitude, but at different times. In Hamburg the descent was observed from 05:00 to 17:00 UTC, 16 April (29 to 41 h since 15 April, 00:00 UTC), while in Palaiseau and Maisach it occurred between 16:00 UTC, 16 April, and 00:00 UTC, 17 April (40 to 48 h since 15 April, 00:00 UTC). As shown in the mask in Fig. 2, the diurnal/nocturnal behaviour is evident in the Hamburg series for the layer top. For Hamburg also the top of the PBL exhibited a strong diurnal/nocturnal cycle, leading to the same behaviour also for the center of mass of the volcanic layer. The seemingly constant layer top for Palaiseau was caused by fixing the maximum observation height at this station, hence the presence of volcanic aerosol at higher altitudes cannot be excluded.

Within the Central Europe cluster typical volcanic layers were observed between 1.7 and 6.5 km height. Measured aerosol backscatter coefficients at 532 nm ranged from the minimum of  $0.8 \times 10^{-7} \text{ m}^{-1} \text{ sr}^{-1}$  to the maximum values of  $26.6 \times 10^{-6} \text{ m}^{-1} \text{ sr}^{-1}$  observed at an altitude of 2.8 km over Hamburg at 05:00 UTC on 16 April. The latter value represented the largest aerosol backscatter coefficient measured by EARLINET over Europe for the whole event. Extensive and intensive optical properties observed by the multi-wavelength Raman lidar systems available in this region together with sun photometer observations allowed the discrimination between sulfate particles and ash in the most intense volcanic layers (Ansmann et al., 2011).

The Central Mediterranean cluster Ispra (is), L'Aquila (la), Napoli (na), Potenza (po), and Lecce (lc) (see Fig. 7) observed the volcanic cloud later in comparison to the Central Europe cluster. All the Italian stations observed the volcanic cloud in the period

19–22 April 2010 with the center of mass of the volcanic layer at lower altitudes (at about 2.8 km) compared to the Central Europe cluster. During 6–10 May and 12–15 May, when there was air mass transport from the west, the volcanic cloud was observed only over the southern stations (na, po, and lc). In the period 18–19 May, the volcanic cloud was observed also in Northern Italy, over Ispra, in agreement with observations in the Central Europe cluster and over Maisach in particular. A descending layer between 10 and 5 km a.s.l. was observed over Potenza from 21 April, 02:00 UTC to 11:00 UTC (146 to 155 h since 15 April, 00:00 UTC). In the Central Mediterranean cluster, intrusion into the PBL was also observed very often. Mixing with Saharan dust also occurred during May for all southern stations.

In the Central Mediterranean cluster the values of the aerosol backscatter coefficient were much lower compared to those measured over Central Europe. Here typical backscatter coefficient values at 532 nm were around  $5.80 \times 10^{-7} \text{ m}^{-1} \text{ sr}^{-1}$  with a maximum of  $6.7 \times 10^{-6} \text{ m}^{-1} \text{ sr}^{-1}$  observed over Ispra on 20 April, 08:00 UTC. Extensive and intensive optical properties measured in this cluster revealed the presence of mainly sulfate aerosols with the presence in few cases of some aged diluted ash (Mona et al., 2012, Perrone et al., 2012).

The Iberian Peninsula was affected by the volcanic cloud only for few days in May when the wind transported the plume from Iceland towards the southwest. The weather was quite unstable, characterized by the presence of clouds and rain over the peninsula. Only few sporadic measurements were possible over Barcelona and Madrid and are therefore not reported here. More measurements were possible for more western stations: Evora (ev) and Granada (gr). The results are shown in Fig. 8. First observations of the volcanic cloud were made on 5 May, 10:00 UTC (490 h since 15 April, 00:00 UTC) over Granada. The typical altitude for the center of mass of the volcanic layer was about 4.1 km. Similar patterns in the center of mass behaviour were observed at both stations on 6 May. There was however a time delay of about 8 h between Granada (535 to 544 h since 15 April, 00:00 UTC) and Evora (527 to 537 h since

**Eyjafjallajökull  
volcanic cloud  
observed by  
EARLINET**

G. Pappalardo et al.

Title Page

Abstract

Introduction

Conclusions

References

Tables

Figures

⏪

⏩

◀

▶

Back

Close

Full Screen / Esc

Printer-friendly Version

Interactive Discussion



15 April, 00:00 UTC). Data from Evora furthermore showed the center of mass to be approximately 300 m higher than over Granada.

Typical aerosol backscatter coefficient values at 532 nm were found to be for this cluster around  $2.1 \times 10^{-7} \text{ m}^{-1} \text{ sr}^{-1}$  with the maximum of  $17.9 \times 10^{-6} \text{ m}^{-1} \text{ sr}^{-1}$  observed over Granada at 06:00 UTC on 13 May. Multi-wavelength Raman lidar data from Granada were also used to retrieve microphysical properties during the night from 7 to 8 May. Particle effective radius ranged from  $0.30 \pm 0.11 \mu\text{m}$  to  $0.55 \pm 0.13 \mu\text{m}$  in the volcanic plume along this night. This study indicated that the volcanic plume over this station was mainly composed by sulfate and sulphuric acid droplets (Navas-Guzmán et al., 2012).

In the Eastern Mediterranean cluster, Bucharest (bu), Thessaloniki (th), and Athens (at), generally less volcanic aerosol occurrences were recorded (see Fig. 9). The typical height of the center of mass of the volcanic layer has been observed at about 2.5 km over Athens and Thessaloniki and at a higher altitude (around 4.6 km) over Bucharest. These values observed over Greece were lower in comparison to those observed over Central Europe and in good agreement with data from Southern Italy. A layer descending from 7 km on 21 April, 22:00 UTC (165 h since 15 April, 00:00 UTC), down to 2.2 km on 22 April, 07:00 UTC (175 h since 15 April, 00:00 UTC), was observed over Athens. This observation was consistent with those from Potenza 20 h before. In the period 18–19 May, the center of mass of the volcanic layer was at an altitude of 2.5 km in agreement with the measurements at Potenza in the same period.

In this cluster typical aerosol backscatter coefficient values at 532 nm were around  $7.1 \times 10^{-7} \text{ m}^{-1} \text{ sr}^{-1}$  with a maximum of  $5.02 \times 10^{-6} \text{ m}^{-1} \text{ sr}^{-1}$  found over Thessaloniki on 22 April, 17:00 UTC. Extensive and intensive aerosol optical properties and geometrical characteristics, combined with model simulations were used for aged ash and mineral dust aerosol discrimination over the Eastern Mediterranean area, in the height range between 2–5 km height a.s.l., especially during May 2010 (Papayannis et al., 2012).

The Eastern Europe cluster, Minsk (mi) and Belsk (be), observed the volcanic cloud mainly in the the first period of the event (16–25 April, see Fig. 10) after the volcanic

## Eyjafjallajökull volcanic cloud observed by EARLINET

G. Pappalardo et al.

Title Page

Abstract

Introduction

Conclusions

References

Tables

Figures



Back

Close

Full Screen / Esc

Printer-friendly Version

Interactive Discussion

## Eyjafjallajökull volcanic cloud observed by EARLINET

G. Pappalardo et al.

Title Page

Abstract

Introduction

Conclusions

References

Tables

Figures

⏪

⏩

◀

▶

Back

Close

Full Screen / Esc

Printer-friendly Version

Interactive Discussion



cloud had reached Central Europe and had spread out with parts if it moving in east-  
erly direction. The volcanic layer observed in this cluster was characterized by a typical  
center of mass of 4.3 km over Belsk and 6.2 km over Minsk. Intrusion of the volcanic  
aerosol into the PBL was also commonly observed. Typical backscatter coefficient val-  
ues at 532 nm observed over Minsk were around  $1.8 \times 10^{-7} \text{ m}^{-1} \text{ sr}^{-1}$  with a maximum  
of  $1.35 \times 10^{-6} \text{ m}^{-1} \text{ sr}^{-1}$  observed over Minsk at 14:00 UTC on 17 April.

Geometrical data for the layers related to the volcanic cloud have been collected  
and are publicly available on request in a relational database. More details about the  
Eyjafjallajökull 2010 EARLINET relational database are reported in Appendix A. This  
database, specifically set up for this event, contains details about layers identified as  
volcanic (ash, sulfates, and modified volcanic particles) and mixed layers involving the  
presence of volcanic aerosol (e.g. volcanic-dust and volcanic–locally mixed layers).  
For each layer, base, top, and center of mass altitudes are reported together with  
aerosol backscatter mean and standard deviation values, integrated backscatter, and  
mean relative aerosol backscatter statistical errors evaluated within the layer. Each  
layer is linked to the corresponding aerosol backscatter profile available in the EAR-  
LINET database. The following information is provided for each aerosol backscatter  
profile: station name and coordinates, time, minimum and maximum height investi-  
gated within each profile, first altitude above the fixed threshold in the relative error,  
PBL height, and the indication of whether there was an intrusion into the PBL. The  
name of the corresponding original file (netCDF) contained in the public EARLINET  
database ([www.earlinet.org](http://www.earlinet.org)) is also reported for further exploitation. The Eyjafjallajökull  
2010 EARLINET relational database is available on request through the related  
link on the EARLINET web site.

Quantitative optical data, specifically aerosol backscatter and extinction coefficient  
profiles and particle linear depolarization ratio at different wavelengths are available  
in the EARLINET database ([www.earlinet.org](http://www.earlinet.org)) in the volcanic category. From these  
data, it is possible to derive lidar ratio (extinction-to-backscatter ratio) and Ångström  
exponent data. This kind of spectral extensive and intensive optical data are useful



for aerosol typing and for the retrieval of microphysical properties (Müller et al., 1999; Veselovskii et al., 2002; Böckmann et al., 2005).

Table 2 summarizes the values for geometrical and optical properties (aerosol optical depth, lidar ratio, linear particle depolarization ratio, and Ångström exponent) observed from specific EARLINET multi-wavelength Raman lidar stations in specific periods of the event. The table also reports the retrieved volcanic aerosol type together with the corresponding references.

The main objective of this work is to summarize the spatial and temporal evolution of the volcanic cloud generated by the Eyjafjallajökull eruption in April/May 2010 as observed by the coordinated ground-based lidar network EARLINET. The results presented in this publication comprise all valid EARLINET observations in the troposphere during the 2010 eruption event. The data also reveal the presence of volcanic aerosol at higher altitudes, reaching the upper troposphere-lower stratosphere altitude range (UTLS) (Trickl et al., 2012). However, it was decided to focus only on the tropospheric region because the aerosol mask methodology presented in this work cannot be simply transferred to the UTLS region and above. The analysis of volcanic aerosol in the UTLS related to all observations available from the EARLINET stations able to provide stratospheric data require a separate study.

## 6 Summary

EARLINET made a very substantial effort to monitor the Eyjafjallajökull eruption event in April/May 2010 by performing almost continuous lidar measurements during the entire period. The coordinated observations by EARLINET and a methodology that was specifically designed ad hoc for this event provided a detailed description of the 4-D distribution of the volcanic cloud over Europe for the whole event. Geometrical properties of the volcanic cloud over Europe were provided with high resolution (typically 60–180 m) in terms of base, top, and center of mass of the volcanic layer.

### Eyjafjallajökull volcanic cloud observed by EARLINET

G. Pappalardo et al.

Title Page

Abstract

Introduction

Conclusions

References

Tables

Figures

⏪

⏩

◀

▶

Back

Close

Full Screen / Esc

Printer-friendly Version

Interactive Discussion



**Eyjafjallajökull  
volcanic cloud  
observed by  
EARLINET**

G. Pappalardo et al.

[Title Page](#)[Abstract](#)[Introduction](#)[Conclusions](#)[References](#)[Tables](#)[Figures](#)[⏪](#)[⏩](#)[◀](#)[▶](#)[Back](#)[Close](#)[Full Screen / Esc](#)[Printer-friendly Version](#)[Interactive Discussion](#)

A first volcanic layer was observed at an altitude of ca. 3 km and up to 6 km over Hamburg in the early morning of 16 April. In the following days the ash plume was observed over Central Europe (Germany and France) at 5–6 km a.s.l. and Belarus at 8 km a.s.l. The maximum backscatter value of  $26.6 \times 10^{-6} \text{ m}^{-1} \text{ sr}^{-1}$  was observed at an altitude of 2.8 km over Hamburg on 16 April. Volcanic particles were observed over Italy on 20 April and over Greece on 21 April. The volcanic cloud was persistent over Central Europe for the whole period (15–26 April), with varying aerosol loads. Descending aerosol layers were typically observed in all of Europe and intrusion into the PBL was commonly detected at almost each site. In May volcanic particles were detected over Spain and Portugal and then over the Mediterranean and the Balkans. Volcanic particles were observed over Central Europe until 25 May.

Mixing of volcanic particles with other kind of aerosol (dust, continental and local) was identified. Mixing with Saharan dust was observed mainly during May for all southern stations.

The results about the 4-D distribution of the volcanic cloud are reported in a specific relational database available on request through the EARLINET web site.

Quantitative optical data, specifically aerosol backscatter and extinction coefficient profiles and linear depolarization ratio at different wavelengths and derived lidar ratio and Ångström exponent profiles are available through the EARLINET database ([www.earlinet.org](http://www.earlinet.org)) in the volcanic category. Typical optical data observed for this particular event have been also reported in this publication. EARLINET data collected for this event, including the specific relational database related to the geometrical properties of the volcanic cloud, represent a unique database for model evaluation, data validation, and integration.

## Appendix A

### Eyja2010 EARLINET relational database

A relational database, containing the output of the 4-D analysis of EARLINET data related to the volcanic eruption of 2010, has been set up. MySQL server has been used because it is based on open-source software and allows platform-independent access. The full Eyja2010 MySQL database is freely available on request at <http://www.earlinet.org>.

#### A1 Installation

The Eyja2010 MySQL database can be installed locally to provide easy and full access to all the output of the 4-D analysis presented in this work. The installation requirements are:

1. A MySQL server (version 5.0 or later) which must be running on the computer where the Eyja2010 MySQL database is to be set up. MySQL server is freely available for different operating systems (Windows, Linux, Mac, and others) at <http://www.mysql.com/downloads/mysql/>
2. A MySQL client is needed to connect to the MySQL server. There are many freeware MySQL clients available on the internet; some examples are HeidiSQL, Squirrel SQL, phpMyAdmin.

The database zip archive contains two files:

- README (text file containing these installation instructions)
- earlinet\_eyja2010.sql (full dump of Eyja2010 MySQL database)

To install the Eyja2010 database just connect to the MySQL server (administrator rights are needed for that) using your favorite MySQL client, create a new empty database

### Eyjafjallajökull volcanic cloud observed by EARLINET

G. Pappalardo et al.

Title Page

Abstract

Introduction

Conclusions

References

Tables

Figures

⏪

⏩

◀

▶

Back

Close

Full Screen / Esc

Printer-friendly Version

Interactive Discussion



and load in it the contents of the earlinet\_eyja2010.sql dump (for further details please refer to your MySQL client documentation).

## A2 Database description

For the administration of the database four tables are created: *Stations*, *Backscatters*, *Volcanic\_Layers* and *Mixing\_Layers*.

The table *Stations* (Fig. A1) provides basic information on the EARLINET stations: an incremental *ID*, *Location*, *Latitude* and *Longitude* in degree, and *Altitude* above sea level in meters.

The table *Backscatters* (Fig. A2) provides information about each backscatter file analysis for the 4-D volcanic cloud distribution study. Also in this table an *ID* (auto-incremental) identifies the backscatter profile inside this relational database. The *station\_ID* is reported corresponding to the entry in the *Stations* table. For each backscatter profile the *earlinet\_filename* and information reported in the original netcdf file (all the netcdf files are available in the EARLINET database) are listed (*skipped\_fraction*, *measurement\_start* and *measurement\_stop* time, *PBL\_height*). Additional values calculated from netcdf file are also reported: minimum and maximum altitude available in the profile (*min\_height* and *max\_height*), first altitude where the relative error exceeds the 50% threshold (*first\_height\_below\_error\_treshold*), and *reference\_time* (xx: hours since 15 April, 00:00 UT time for which the profile can be considered representative). Finally *PBL\_intrusion* is flagged with number “1” if an intrusion of volcanic layer into the PBL is observed for the corresponding backscatter profiles and “0” otherwise.

The table *volcanic\_layers* (Fig. A3) contains the main information pertaining to this study, i.e. characteristics of the layers identified as volcanic layers. Layers are identified by a specific *ID* and are linked to backscatter profiles through the *backscatter\_ID* (as reported in the *Backscatters* table). For each layer, geometrical properties (*base*, *top*, and *center\_of\_mass*) are reported. For each layer, the mean and standard deviation of backscatter coefficient values are reported (*mean\_backscatter* and *std\_backscatter*) together with the *mean\_relative\_error\_on\_backscatter*. The maximum value of the aerosol

### Eyjafjallajökull volcanic cloud observed by EARLINET

G. Pappalardo et al.

Title Page

Abstract

Introduction

Conclusions

References

Tables

Figures



Back

Close

Full Screen / Esc

Printer-friendly Version

Interactive Discussion



backscatter coefficient observed within the volcanic layer and the corresponding altitude are reported too (*backscatter\_peak\_value* and *altitude\_of\_backscatter\_peak*). Finally the *integrated\_backscatter* calculated within the identified volcanic layer is reported.

5 The table *mixed\_layers* (Fig. A4) contains information related to aerosol layers in which a mixing between volcanic and other aerosol types is observed. Layers are identified by a specific *ID* and are linked to backscatter profiles through the *backscatter\_ID* (as reported in the *Backscatters* table). The first reported information is the *mixing\_aerosol\_type* which is a number describing the type of mixing (e.g. “1” for volcanic mixed with local aerosol, “2” for volcanic mixed to Saharan dust and “3” for volcanic mixed to continental aerosols). For each mixed layer, geometrical properties (*base*, *top*, and *center\_of\_mass*) are reported. For each mixed layer, the mean and standard deviation of backscatter values are reported (*mean\_backscatter* and *std\_backscatter*) together with the *mean\_relative\_error\_on\_backscatter*. The maximum value of the aerosol backscatter coefficient observed within the mixed layer and the corresponding altitude are reported too (*backscatter\_peak\_value* and *altitude\_of\_backscatter\_peak*). Finally the *integrated\_backscatter* calculated within the identified mixed layer is reported.

15 *Acknowledgements.* The financial support for EARLINET by the European Union under grant RICA 025991 in the Sixth Framework Programme is gratefully acknowledged. Since 2011 EARLINET is integrated in the ACTRIS Research Infrastructure Project supported by the European Union Seventh Framework Programme (FP7/2007-2013) under grant agreement n. 262254. This work has been partially supported by the EU FP7 project WEZARD (Weather hazards for aeronautics) grant agreement no. 285050.

20 The authors acknowledge the ESA financial support under the ESRIN contract 21769/08/IOL and 22202/09/I-EC.

25 Additional financial support have been received from the Andalusia Regional Government through project P10-RNM-6299 and from the Spanish Ministry of Science and Technology through projects CGL2010-18782, and CSD2007-00067.

30 Authors would like to thank the NOAA Air Resources Laboratory (ARL) for the provision of the HYSPLIT backtrajectory analysis; the German Weather Service for the air mass back-trajectory

**Eyjafjallajökull  
volcanic cloud  
observed by  
EARLINET**

G. Pappalardo et al.

Title Page

Abstract

Introduction

Conclusions

References

Tables

Figures



Back

Close

Full Screen / Esc

Printer-friendly Version

Interactive Discussion



analysis, NILU for providing FLEXTRA back-trajectories based on meteorological data provided from ECMWF (European Centre for Medium Range Weather Forecast) available at <http://www.nilu.no/trajectories>; and Tom L. Kucsera (GEST) at NASA/Goddard for back-trajectories available at the [aeronet.gsfc.nasa.gov](http://aeronet.gsfc.nasa.gov) website. We also thank the Barcelona Supercomputing Center for forecasts with the Dust Regional Atmospheric Model (DREAM) and the Data User Element of the European Space Agency Data for data available from “ATSR World Fire Atlas”. The Eyjafjallajökull volcanic activity was monitored through updated reports provided by the Iceland Meteorological Office and available at <http://en.vedur.is/earthquakes-and-volcanism/articles/nr/2072>.

## References

- Ansmann, A., Bösenberg, J., Chaikovsky, A., Comerón, A., Eckhardt, S., Eixmann, R., Freudenthaler, V., Ginoux, P., Komguem, P., Linné, H., Ángel López Márquez, M., Matthias, V., Mattis, I., Mitev, V., Müller, D., Music, S., Nickovic, S., Pelon, J., Sauvage, L., Sobolewsky, P., Srivastava, M. K., Stohl, A., Torres, O., Vaughan, G., Wandinger, U., and Wiegner, M.: Long-range transport of Saharan dust to Northern Europe: the 11–16 October 2001 outbreak with EARLINET, *J. Geophys. Res.*, 108, 4783, doi:10.1029/2003JD003757, 2003.
- Ansmann, A., Tesche, M., Groß, S., Freudenthaler, V., Seifert, P., Hiebsch, A., Schmidt, J., Wandinger, U., Mattis, I., Müller, D., and Wiegner, M.: The 16 April 2010 major volcanic ash plume over Central Europe: EARLINET lidar and AERONET photometer observations at Leipzig and Munich, Germany, *Geophys. Res. Lett.*, 37, L13810, doi:10.1029/2010GL043809, 2010.
- Ansmann, A., Tesche, M., Seifert, P., Groß, S., Freudenthaler, V., Apituley, A., Wilson, K. M., Serikov, I., Linné, H., Heinold, B., Hiebsch, A., Schnell, F., Schmidt, J., Mattis, I., Wandinger, U., and Wiegner, M.: Ash and fine-mode particle mass profiles from EARLINET-AERONET observations over Central Europe after the eruptions of the Eyjafjallajökull volcano in 2010, *J. Geophys. Res.*, 116, D00U02, doi:10.1029/2010JD015567, 2011.
- Amiridis, V., Balis, D. S., Giannakaki, E., Stohl, A., Kazadzis, S., Koukoulis, M. E., and Zanis, P.: Optical characteristics of biomass burning aerosols over Southeastern Europe determined from UV-Raman lidar measurements, *Atmos. Chem. Phys.*, 9, 2431–2440, doi:10.5194/acp-9-2431-2009, 2009.

## Eyjafjallajökull volcanic cloud observed by EARLINET

G. Pappalardo et al.

Title Page

Abstract

Introduction

Conclusions

References

Tables

Figures



Back

Close

Full Screen / Esc

Printer-friendly Version

Interactive Discussion



## Eyjafjallajökull volcanic cloud observed by EARLINET

G. Pappalardo et al.

Title Page

Abstract

Introduction

Conclusions

References

Tables

Figures

⏪

⏩

◀

▶

Back

Close

Full Screen / Esc

Printer-friendly Version

Interactive Discussion



Arason, P., Petersen, G. N., and Björnsson, H.: Observations of the altitude of the volcanic plume during the eruption of Eyjafjallajökull, April–May 2010, *Earth Syst. Sci. Data*, 3, 9–17, 2011,

<http://www.earth-syst-sci-data.net/3/9/2011/>.

5 Bingemer, H., Klein, H., Ebert, M., Haunold, W., Bundke, U., Herrmann, T., Kandler, K., Müller-Ebert, D., Weinbruch, S., Judt, A., Wéber, A., Nillius, B., Ardon-Dryer, K., Levin, Z., and Curtius, J.: Atmospheric ice nuclei in the Eyjafjallajökull volcanic ash plume, *Atmos. Chem. Phys.*, 12, 857–867, doi:10.5194/acp-12-857-2012, 2012.

10 Böckmann, C., Wandinger, U., Ansmann, A., Bösenberg, J., Amiridis, V., Boselli, A., Delaval, A., De Tomasi, F., Frioud, M., Hågård, A., Horvat, M., Iarlori, M., Komguem, L., Kreipl, S., Larchevêque, G., Matthias, V., Papayannis, A., Pappalardo, G., Rocaembosch, F., Rodriguez, J. A., Schneider, J., Shcherbakov, V., and Wiegner, M.: Aerosol lidar intercomparison in the framework of the EARLINET project. 2. Aerosol backscatter algorithms, *Appl. Optics*, 43, 977–989, 2004.

15 Böckmann, C., Mironova, I., Müller, D., Schneidenbach, L., and Nessler, R.: Microphysical aerosol parameters from multiwavelength lidar, *J. Opt. Soc. Am. A*, 22, 518–528, 2005.

Bösenberg, J., Ansmann, A., Baldasano, J. M., Balis, D., Böckmann, C., Calpini, B., Chaikovskiy, A., Flamant, P., Hagard, A., Mitev, V., Papayannis, A., Pelon, J., Resendes, D., Schneider, J., Spinelli, N., Trickl, T., Vaughan, G., Visconti, G., and Wiegner, M.: EARLINET: a European Aerosol Research Lidar Network, in: *Advances in Laser Remote Sensing*, edited by: Dabas, A., Loth, C., and Pelon, J., Ecole polytechnique, Palaiseau Cedex, France, 155–158, 2001.

20 Bukowiecki, N., Zieger, P., Weingartner, E., Jurányi, Z., Gysel, M., Neining, B., Schneider, B., Hueglin, C., Ulrich, A., Wichser, A., Henne, S., Brunner, D., Kaegi, R., Schwikowski, M., Tobler, L., Wienhold, F. G., Engel, I., Buchmann, B., Peter, T., and Baltensperger, U.: Ground-based and airborne in-situ measurements of the Eyjafjallajökull volcanic aerosol plume in Switzerland in spring 2010, *Atmos. Chem. Phys.*, 11, 10011–10030, doi:10.5194/acp-11-10011-2011, 2011.

25 Carnuth, W., Kempfer, U., and Trickl, T.: Highlights of the tropospheric lidar studies at IFU within the TOR Project, *Tellus B*, 54, 163–185, 2002.

30 Chazette, P., Dabas, A., Sanak, J., Lardier, M., and Royer, P.: French airborne lidar measurements for Eyjafjallajökull ash plume survey, *Atmos. Chem. Phys.*, 12, 7059–7072, doi:10.5194/acp-12-7059-2012, 2012.

## Eyjafjallajökull volcanic cloud observed by EARLINET

G. Pappalardo et al.

Title Page

Abstract

Introduction

Conclusions

References

Tables

Figures

◀

▶

◀

▶

Back

Close

Full Screen / Esc

Printer-friendly Version

Interactive Discussion

- Deshler, T.: A review of global stratospheric aerosol: measurements, importance, life cycle, and local stratospheric aerosol, *Atmos. Res.*, 90, 223–232, 2008.
- Deshler, T., Anderson-Sprecher, R., Jäger, H., Barnes, J., Hofmann, D. J., Clemensha, B., Simonich, D., Grainger, R. G., and Godin-Beekmann, S.: Trends in the non-volcanic component of stratospheric aerosol over the period 1971–2004, *J. Geophys. Res.*, 111, D01201, doi:10.1029/2005JD006089, 2006.
- Draxler, R. R. and Rolph, G. D.: HYSPLIT (HYbrid Single-Particle Lagrangian Integrated Trajectory) Model access via NOAA ARL READY Website, available at: <http://ready.arl.noaa.gov/HYSPLIT.php>, (last access: October 2012), NOAA Air Resources Laboratory, Silver Spring, MD, 2012.
- Emeis, S., Forkel, R., Junkermann, W., Schäfer, K., Flentje, H., Gilge, S., Fricke, W., Wiegner, M., Freudenthaler, V., Groß, S., Ries, L., Meinhardt, F., Birmili, W., Münkel, C., Obleitner, F., and Suppan, P.: Measurement and simulation of the 16/17 April 2010 Eyjafjallajökull volcanic ash layer dispersion in the northern Alpine region, *Atmos. Chem. Phys.*, 11, 2689–2701, doi:10.5194/acp-11-2689-2011, 2011.
- Flentje, H., Claude, H., Elste, T., Gilge, S., Köhler, U., Plass-Dülmer, C., Steinbrecht, W., Thomas, W., Werner, A., and Fricke, W.: The Eyjafjallajökull eruption in April 2010 – detection of volcanic plume using in-situ measurements, ozone sondes and lidar-ceilometer profiles, *Atmos. Chem. Phys.*, 10, 10085–10092, doi:10.5194/acp-10-10085-2010, 2010.
- Freudenthaler, V., Groß, S., Engelmann, R., Mattis, I., Wandinger, U., Pappalardo, G., Amodeo, A., Giunta, A., D’Amico, G., Chaikovskiy, A., Osipenko, F., Slesar, A., Nicolae, D., Belegante, L., Talianu, C., Serikov, I., Linne, H., Jansen, F., Wilson, K., de Graaf, M., Apituley, A., Trickl, T., Giehl, H., and Adam, M.: EARLI09 – direct intercomparison of eleven EARLINET lidar, in: *Proceedings of the 25th International Laser Radar Conference (ILRC)*, St. Petersburg, Russia, 5–9 July 2010, 891–902, 2010.
- Gasteiger, J., Groß, S., Freudenthaler, V., and Wiegner, M.: Volcanic ash from Iceland over Munich: mass concentration retrieved from ground-based remote sensing measurements, *Atmos. Chem. Phys.*, 11, 2209–2223, doi:10.5194/acp-11-2209-2011, 2011.
- Groß, S., Freudenthaler, V., Wiegner, M., Gasteiger, J., Geiß, A., and Schnell, F.: Dual-wavelength linear depolarization ratio of volcanic aerosols: lidar measurements of the Eyjafjallajökull plume over Maisach, Germany, *Atmos. Environ.* 48, 85–96, doi:10.1016/j.atmosenv.2011.06.017, 2011.



**Eyjafjallajökull  
volcanic cloud  
observed by  
EARLINET**

G. Pappalardo et al.

Title Page

Abstract

Introduction

Conclusions

References

Tables

Figures

◀

▶

◀

▶

Back

Close

Full Screen / Esc

Printer-friendly Version

Interactive Discussion



- Guerrero-Rascado, J. L., Olmo, F. J., Avilés-Rodríguez, I., Navas-Guzmán, F., Pérez-Ramírez, D., Lyamani, H., and Alados Arboledas, L.: Extreme Saharan dust event over the southern Iberian Peninsula in september 2007: active and passive remote sensing from surface and satellite, *Atmos. Chem. Phys.*, 9, 8453–8469, doi:10.5194/acp-9-8453-2009, 2009.
- 5 Hansen, J., Sato, M., Lacis, A., and Ruedy, R.: The missing climate forcing, *Philos. Trans. R. Soc. B*, 352, 231–240, 1997.
- Heinold, B., Tegen, I., Wolke, R., Ansmann, A., Mattis, I., Minikin, A., Schumann, U., and Weinzierl, B.: Simulations of the 2010 Eyjafjallajökull volcanic ash dispersal over Europe using COSMO-MUSCAT, *Atmos. Environ.*, 48, 195–204, doi:10.1016/j.atmosenv.2011.05.021, 2012.
- 10 Hervo, M., Quennehen, B., Kristiansen, N. I., Boulon, J., Stohl, A., Fréville, P., Pichon, J.-M., Picard, D., Labazuy, P., Gouhier, M., Roger, J.-C., Colomb, A., Schwarzenboeck, A., and Sellegri, K.: Physical and optical properties of 2010 Eyjafjallajökull volcanic eruption aerosol: ground-based, Lidar and airborne measurements in France, *Atmos. Chem. Phys.*, 12, 1721–1736, doi:10.5194/acp-12-1721-2012, 2012.
- 15 Hoyle, C. R., Pinti, V., Welti, A., Zobrist, B., Marcolli, C., Luo, B., Höskuldsson, Á., Mattsson, H. B., Stetzer, O., Thorsteinsson, T., Larsen, G., and Peter, T.: Ice nucleation properties of volcanic ash from Eyjafjallajökull, *Atmos. Chem. Phys.*, 11, 9911–9926, doi:10.5194/acp-11-9911-2011, 2011.
- 20 Jäger, H.: Long-term record of lidar observations of the stratospheric aerosol layer at Garmisch-Partenkirchen, *J. Geophys. Res.*, 110, D08106, doi:10.1029/2004JD005506, 2005.
- Kravitz, B., Robock, A., Bourasa, A., Deshler, T., Wu, D., Mattis, I., Finger, F., Hoffmann, A., Ritter, C., Bitar, L., Duck, T., and Barnes, J. E.: Simulation and observations of stratospheric aerosols from the 2009 Sarychev volcanic eruption, *J. Geophys. Res.*, 116, D18211, doi:10.1029/2010JD015501, 2011.
- 25 Langmann, B., Folch, A., Hensch, M., and Matthias, V.: Volcanic ash over Europe during the eruption of Eyjafjallajökull on Iceland, April–May 2010, *Atmos. Environ.*, 48, 1–8, doi:10.1016/j.atmosenv.2011.03.054, 2012.
- Mamouri, R. E., Papayannis, A., Amiridis, V., Müller, D., Kokkalis, P., Rapsomanikis, S., Karageorgos, E. T., Tsaknakis, G., Nenes, A., Kazadzis, S., and Remoundaki, E.: Multi-wavelength Raman lidar, sun photometric and aircraft measurements in combination with inversion models for the estimation of the aerosol optical and physico-chemical properties over Athens, Greece, *Atmos. Meas. Tech.*, 5, 1793–1808, doi:10.5194/amt-5-1793-2012, 2012.
- 30

## Eyjafjallajökull volcanic cloud observed by EARLINET

G. Pappalardo et al.

Title Page

Abstract

Introduction

Conclusions

References

Tables

Figures

⏪

⏩

◀

▶

Back

Close

Full Screen / Esc

Printer-friendly Version

Interactive Discussion



Marenco, F. and Hogan, R. J.: Determining the contribution of volcanic ash and boundary layer aerosol in backscatter lidar returns: a three-component atmosphere approach, *J. Geophys. Res.*, 116, D00U06, doi:10.1029/2010JD015415, 2011.

Marenco, F., Johnson, B., Turnbull, K., Newman, S., Haywood, J., Webster, H., and Ricketts, H.: Airborne lidar observations of the 2010 Eyjafjallajökull volcanic ash plume, *J. Geophys. Res.*, 116, D00U05, doi:10.1029/2011JD016396, 2011.

Matthias, V., Balis, D., Bösenberg, J., Eixmann, R., Iarlori, M., Komguem, L., Mattis, I., Papayannis, A., Pappalardo, G., Perrone, M. R., and Wang, X.: Vertical aerosol distribution over Europe: statistical analysis of Raman lidar data from 10 European Aerosol Research Lidar Network (EARLINET) stations, *J. Geophys. Res.-Atmos.*, 109, D18201, doi:10.1029/2004JD004638, 2004a.

Matthias, V., Bösenberg, J., Freudenthaler, V., Amodeo, A., Balis, D., Chaikovskiy, A., Chourdakis, G., Comeron, A., Delaval, A., De Tomasi, F., Eximann, R., Hågård, A., Komguem, L., Kreipl, S., Matthey, R., Mattis, I., Rizi, V., Rodríguez, J. A., Simeonov, V., and Wang, X.: Aerosol lidar intercomparison in the framework of the EARLINET project. 1. Instruments, *Appl. Optics*, 43, 961–976, 2004b.

Matthias, V., Aulinger, A., Bieser, J., Cuesta, J., Geyer, B., Langmann, B., Serikov, I., Mattis, I., Minikin, A., Mona, L., Quante, M., Schumann, U., and Weinzierl, B.: The ash dispersion over Europe during the Eyjafjallajökull eruption – comparison of CMAQ simulations to remote sensing and air-borne in-situ observations, *Atmos. Environ.*, 48, 184–194, doi:10.1016/j.atmosenv.2011.06.077, 2012.

Mattis, I., Seifert, P., Müller, D., Tesche, M., Hiebsch, A., Kanitz, T., Schmidt, J., Finger, F., Wandinger, U., and Ansmann, A.: Volcanic aerosol layers observed with multiwavelength Raman lidar over Central Europe in 2008–2009, *J. Geophys. Res.*, 115, D00L04, doi:10.1029/2009JD013472, 2010.

Mona, L., Amodeo, A., Pandolfi, M., and Pappalardo, G.: Saharan dust intrusions in the Mediterranean area: three years of Raman lidar measurements, *J. Geophys. Res.*, 111, D16203, doi:10.1029/2005JD006569, 2006.

Mona, L., Amodeo, A., D'Amico, G., Giunta, A., Madonna, F., and Pappalardo, G.: Multiwavelength Raman lidar observations of the Eyjafjallajökull volcanic cloud over Potenza, Southern Italy, *Atmos. Chem. Phys.*, 12, 2229–2244, doi:10.5194/acp-12-2229-2012, 2012.

## Eyjafjallajökull volcanic cloud observed by EARLINET

G. Pappalardo et al.

Title Page

Abstract

Introduction

Conclusions

References

Tables

Figures

⏪

⏩

◀

▶

Back

Close

Full Screen / Esc

Printer-friendly Version

Interactive Discussion



Müller, D., Wandinger, U., and Ansmann, A.: Microphysical particle parameters from extinction and backscatter lidar data by inversion with regularization: theory, *Appl. Optics*, **38**, 2346–2357, 1999.

Müller, D., Mattis, I., Ansmann, A., Wandinger, U., Ritter, C., and Kaiser, D.: Multiwavelength Raman lidar observations of particle growth during long-range transport of forest-fire smoke in the free troposphere, *Geophys. Res. Lett.*, **34**, L05803, doi:10.1029/2006GL027936, 2007.

Navas-Guzmán, F., Müller, D., Bravo-Aranda, J. A., Guerrero-Rascado, J. L., Granados-Muñoz, M. J., Pérez-Ramírez, D., Olmo, F. J., and Alados-Arboledas, L.: Eruption of the Eyjafjallajökull Volcano in spring 2010: multiwavelength raman lidar measurements of sulfate particles in the lower troposphere, *J. Geophys. Res.*, submitted, 2012.

Papayannis, A., Amiridis, V., Mona, L., Tsaknakis, G., Balis, D., Bösenberg, J., Chaikovski, A., De Tomasi, F., Grigorov, I., Mattis, I., Mitev, V., Müller, D., Nickovic, S., Pérez, C., Pietruczuk, A., Pisani, G., Ravetta, F., Rizi, V., Sicard, M., Trickl, T., Wiegner, M., Gerding, M., Mamouri, R. E., D'Amico, G., and Pappalardo, G.: Systematic lidar observations of Saharan dust over Europe in the frame of EARLINET (2000–2002), *J. Geophys. Res.*, **113**, D10204, doi:10.1029/2007JD009028, 2008.

Papayannis, A., Mamouri, R. E., Amiridis, V., Giannakaki, E., Veselovskii, I., Kokkalis, P., Tsaknakis, G., Balis, D., Kristiansen, N. I., Stohl, A., Korenskiy, M., Allakhverdiev, K., Huseyinoglu, M. F., and Baykara, T.: Optical properties and vertical extension of aged ash layers over the Eastern Mediterranean as observed by Raman lidars during the Eyjafjallajökull eruption in May 2010, *Atmos. Environ.*, **48**, 56–65, doi:10.1016/j.atmosenv.2011.08.037, 2012.

Pappalardo, G., Amodeo, A., Mona, L., Pandolfi, M., Pergola, N., and Cuomo, V.: Raman lidar observations of aerosol emitted during the 2002 Etna eruption, *Geophys. Res. Lett.*, **31**, L05120, doi:10.1029/2003GL019073, 2004a.

Pappalardo, G., Amodeo, A., Pandolfi, M., Wandinger, U., Ansmann, A., Bösenberg, J., Matthias, V., Amiridis, V., de Tomasi, F., Frioud, M., Iarlori, M., Komguem, L., Papayannis, A., Rocadenbosch, F., and Wang, X.: Aerosol lidar intercomparison in the framework of EARLINET. Part III. Raman lidar algorithm for aerosol extinction, backscatter and lidar ratio, *Appl. Optics*, **43**, 5370–5385, 2004b.

Pappalardo, G., Amodeo, A., Ansmann, A., Apituley, A., Alados Arboledas, L., Balis, D., Böckmann, C., Chaikovskiy, A., Comeron, A., D'Amico, G., De Tomasi, F., Freudenthaler, V., Giannakaki, E., Giunta, A., Grigorov, I., Gustafsson, O., Groß, S., Haeffelin, M., Iarlori, M.,

## Eyjafjallajökull volcanic cloud observed by EARLINET

G. Pappalardo et al.

Title Page

Abstract

Introduction

Conclusions

References

Tables

Figures

◀

▶

◀

▶

Back

Close

Full Screen / Esc

Printer-friendly Version

Interactive Discussion

Kinne, S., Linné, H., Madonna, F., Mamouri, R., Mattis, I., McAuliffe, M., Molero, F., Mona, L., Müller, D., Mitev, V., Nicolae, D., Papayannis, A., Perrone, M. R., Pietruczuk, A., Pujadas, M., Putaud, J.-P., Ravetta, F., Rizi, V., Serikov, I., Sicard, M., Simeonov, V., Spinelli, N., Stebel, K., Trickl, T., Wandinger, U., Wang, X., Wagner, F., and Wiegner, M.: EARLINET Observations of the Eyjafjallajökull Ash Plume over Europe, in: Lidar Technologies, Techniques, and Measurements for Atmospheric Remote Sensing VI, edited by: Singh, U. N. and Pappalardo, G., Proc. of SPIE, SPIE, Bellingham, WA, Vol. 7832, 78320J, 2010a.

Pappalardo, G., Wandinger, U., Mona, L., Hiebsch, A., Mattis, I., Amodeo, A., Ansmann, A., Seifert, P., Linne, H., Apituley, A., Alados Arboledas, L., Balis, D., Chaikovsky, A., D'Amico, G., De Tomasi, F., Freudenthaler, V., Giannakaki, E., Giunta, A., Grigorov, I., Iarlori, M., Madonna, F., Mamouri, R.-E., Nasti, L., Papayannis, A., Pietruczuk, A., Pujadas, M., Rizi, V., Rocadenbosch, F., Russo, F., Schnell, F., Spinelli, N., Wang, X., and Wiegner, M.: EARLINET correlative measurements for CALIPSO: first intercomparison results, *J. Geophys. Res.*, 115, D00H19, doi:10.1029/2009JD012147, 2010b.

Perrone, M. R., De Tomasi, F., Stohl, A., and Kristiansen, N. I.: Integration of measurements and model simulations to characterize Eyjafjallajökull volcanic aerosols over south-eastern Italy, *Atmos. Chem. Phys.*, 12, 10001–10013, doi:10.5194/acp-12-10001-2012, 2012.

Pietruczuk, A., Krzyscin, J. W., Jaroslowski, J., Podgorski, J., Sobolewski, P., and Wink, J.: Eyjafjallajökull volcano ash observed over Belsk (52 degrees N, 21 degrees E), Poland, in April 2010, *Int. J. Remote Sens.*, 31, 15, 3981–3986, doi:10.1080/01431161.2010.498030, 2010.

Robock, A: Volcanic eruptions and climate, *Rev. Geophys.*, 38, 191–219, 2000.

Rolf, C., Krämer, M., Schiller, C., Hildebrandt, M., and Riese, M.: Lidar observation and model simulation of a volcanic-ash-induced cirrus cloud during the Eyjafjallajökull eruption, *Atmos. Chem. Phys.*, 12, 10281–10294, doi:10.5194/acp-12-10281-2012, 2012.

Rolph, G. D.: Real-time Environmental Applications and Display sYstem (READY) Website, available at: <http://ready.arl.noaa.gov> (last access: October 2012), NOAA Air Resources Laboratory, Silver Spring, MD, 2012.

Sawamura, P., Vernier, J. P., Barnes, J. E., Berkoff, T. A., Welton, E. J., Alados-Arboledas, L., Navas-Guzmán, F., Pappalardo, G., Mona, L., Madonna, F., Lange, D., Sicard, M., Godin-Beekmann, S., Payen, G., Wang, Z., Hu, S., Tripathi, S. N., Cordoba-Jabonero, C., and Hoff, R. M.: Stratospheric AOD after the 2011 eruption of Nabro volcano measured by

## Eyjafjallajökull volcanic cloud observed by EARLINET

G. Pappalardo et al.

Title Page

Abstract

Introduction

Conclusions

References

Tables

Figures

◀

▶

◀

▶

Back

Close

Full Screen / Esc

Printer-friendly Version

Interactive Discussion

lidars over the Northern Hemisphere, *Environ. Res. Lett.*, 7, 034013, doi:10.1088/1748-9326/7/3/034013, 2012.

Schoeberl, M. R. and Newman P. A.: A multiple-level trajectory analysis of vortex filaments, *J. Geophys. Res.*, 100, 25801–25816, 1995.

5 Schäfer, K., Thomas, W., Peters, A., Ries, L., Obleitner, F., Schnelle-Kreis, J., Birmili, W., Diemer, J., Fricke, W., Junkermann, W., Pitz, M., Emeis, S., Forkel, R., Suppan, P., Flen-tje, H., Gilge, S., Wichmann, H. E., Meinhardt, F., Zimmermann, R., Weinhold, K., Soentgen, J., Münkel, C., Freuer, C., and Cyrys, J.: Influences of the 2010 Eyjafjallajökull volcanic plume on air quality in the northern Alpine region, *Atmos. Chem. Phys.*, 11, 8555–8575, doi:10.5194/acp-11-8555-2011, 2011.

10 Schumann, U., Weinzierl, B., Reitebuch, O., Schlager, H., Minikin, A., Forster, C., Baumann, R., Sailer, T., Graf, K., Mannstein, H., Voigt, C., Rahm, S., Simmet, R., Scheibe, M., Lichtenstern, M., Stock, P., Rüba, H., Schäuble, D., Tafferner, A., Rautenhaus, M., Gerz, T., Ziereis, H., Krautstrunk, M., Mallaun, C., Gayet, J.-F., Lieke, K., Kandler, K., Ebert, M., Weinbruch, S., Stohl, A., Gasteiger, J., Groß, S., Freudenthaler, V., Wiegner, M., Ansmann, A., Tesche, M., Olafsson, H., and Sturm, K.: Airborne observations of the Eyjafjalla volcano ash cloud over Europe during air space closure in April and May 2010, *Atmos. Chem. Phys.*, 11, 2245–2279, doi:10.5194/acp-11-2245-2011, 2011.

15 Seifert, P., Ansmann, A., Groß, S., Freudenthaler, V., Heinold, B., Hiebsch, A., Mattis, I., Schmidt, J., Schnell, F., Tesche, M., Wandinger, U., and Wiegner, M.: Ice formation in ash-influenced clouds after the eruption of the Eyjafjallajökull volcano in April 2010, *J. Geophys. Res.*, 116, D00U04, doi:10.1029/2011JD015702, 2011.

20 Shimizu, A., Sugimoto, N., Matsui, I., Arao, K., Uno, I., Murayama, T., Kagawa, N., Aoki, K., Uchiyama, A., and Yamazaki, A.: Continuous observations of Asian dust and other aerosols by polarization lidars in China and Japan during ACE-Asia, *J. Geophys. Res.*, 109, D19S17, doi:10.1029/2002JD003253, 2004.

25 Sicard, M., Guerrero-Rascado, J. L., Navas-Guzmán, F., Preißler, J., Molero, F., Tomás, S., Bravo-Aranda, J. A., Comerón, A., Rocadenbosch, F., Wagner, F., Pujadas, M., and Alados-Arboledas, L.: Monitoring of the Eyjafjallajökull volcanic aerosol plume over the Iberian Peninsula by means of four EARLINET lidar stations, *Atmos. Chem. Phys.*, 12, 3115–3130, doi:10.5194/acp-12-3115-2012, 2012.

## Eyjafjallajökull volcanic cloud observed by EARLINET

G. Pappalardo et al.

Title Page

Abstract

Introduction

Conclusions

References

Tables

Figures

⏪

⏩

◀

▶

Back

Close

Full Screen / Esc

Printer-friendly Version

Interactive Discussion



- Solomon, S., Daniel, J. S., Neely III, R. R., Vernier, J.-P., Dutton, E. G., and Thomason, L. W.: The persistently variable “background” stratospheric aerosol layer and global climate change, *Science*, 333, 866–870, 2011.
- Steinke, I., Möhler, O., Kiselev, A., Niemand, M., Saathoff, H., Schnaiter, M., Skrotzki, J., Hoose, C., and Leisner, T.: Ice nucleation properties of fine ash particles from the Eyjafjallajökull eruption in April 2010, *Atmos. Chem. Phys.*, 11, 12945–12958, doi:10.5194/acp-11-12945-2011, 2011.
- Steyn, D., Baldi, G. M., and Hoff, R. M.: The Detection of mixed layer depth and entrainment zone thickness from lidar backscatter profiles, *J. Atmos. Ocean. Tech.*, 16, 953–959, 1999.
- Stohl, A.: Computation, accuracy and applications of trajectories – a review and bibliography, *Atmos. Environ.*, 32, 947–966, 1998.
- Stohl, A., Wotawa, G., Seibert, P., and Kromp-Kolb, H.: Interpolation errors in wind fields as a function of spatial and temporal resolution and their impact on different types of kinematic trajectories. *J. Appl. Meteorol.*, 34, 2149–2165, 1995.
- Stohl, A., Bonasoni, P., Christofanelli, P., Collins, B., Feichter, J., Frank, A., Forster, C., Gerasopoulos, E., Gaggeler, H., James, P., Kentarchos, T., Kreipl, S., Land, C., Meloen, J., Papayannis, A., Priller, A., Seibert, P., Sprenger, M., Roelofs, G., Scheel, E., Schnabel, C., Siegmund, P., Tobler, L., Trickl, T., Wernli, H., Wirth, V., Zanis, P., and Zerefos, C.: Stratospheric-tropospheric exchange. a review and what we have learned from STACCATO, *J. Geophys. Res.*, 108, D8516, doi:10.1029/2002JD002490, 2003.
- Stohl, A., Prata, A. J., Eckhardt, S., Clarisse, L., Durant, A., Henne, S., Kristiansen, N. I., Minikin, A., Schumann, U., Seibert, P., Stebel, K., Thomas, H. E., Thorsteinsson, T., Tørseth, K., and Weinzierl, B.: Determination of time- and height-resolved volcanic ash emissions and their use for quantitative ash dispersion modeling: the 2010 Eyjafjallajökull eruption, *Atmos. Chem. Phys.*, 11, 4333–4351, doi:10.5194/acp-11-4333-2011, 2011.
- Tesche, M., Ansmann, A., Müller, D., Althausen, D., Engelmann, R., Freudenthaler, V., and Groß, S.: Vertically resolved separation of dust and smoke over CapeVerde using multi-wavelength Raman and polarization lidars during Saharan mineral dust experiment 2008, *J. Geophys. Res.*, 114, D13202, doi:10.1029/2009JD011862, 2009.
- Trickl, T., Feldmann, H., Kanter, H.-J., Scheel, H.-E., Sprenger, M., Stohl, A., and Wernli, H.: Forecasted deep stratospheric intrusions over Central Europe: case studies and climatologies, *Atmos. Chem. Phys.*, 10, 499–524, doi:10.5194/acp-10-499-2010, 2010.

## Eyjafjallajökull volcanic cloud observed by EARLINET

G. Pappalardo et al.

[Title Page](#)
[Abstract](#)
[Introduction](#)
[Conclusions](#)
[References](#)
[Tables](#)
[Figures](#)




[Back](#)
[Close](#)
[Full Screen / Esc](#)
[Printer-friendly Version](#)
[Interactive Discussion](#)


- Trickl, T., Giehl, H., Jäger, H., and Vogelmann, H.: 35 years of stratospheric aerosol measurements at Garmisch-Partenkirchen: from Fuego to Eyjafjallajökull, and beyond, *Atmos. Chem. Phys. Discuss.*, 12, 23135–23193, doi:10.5194/acpd-12-23135-2012, 2012.
- 5 Veselovskii, I., Kolgotin, A., Griaznov, V., Müller, D., Wandinger, U., and Whiteman, D. N.: Inversion with regularization for the retrieval of tropospheric aerosol parameters from multiwavelength lidar sounding, *Appl. Optics*, 41, 3685–3699, 2002.
- Villani, M. G., Mona, L., Maurizi, A., Pappalardo, G., Tiesi, A., Pandolfi, M., D'Isidoro, M., Cuomo, V., and Tampieri, F.: Transport of volcanic aerosol in the troposphere: the case study of the 2002 Etna plume, *J. Geophys. Res.*, 111, D21102, doi:10.1029/2006JD007126, 2006.
- 10 Wang, X., Boselli, A., D'Avino, L., Pisani, G., Spinelli, N., Amodeo, A., Chaikovskiy, A., Wiegner, M., Nickovic, S., Papayannis, A., Perrone, M. R., Rizi, V., Sauvage, L., and Stohl, A.: Volcanic dust characterization by EARLINET during Etna's eruptions in 2001–2002, *Atmos. Environ.*, 42, 893–905, 2008.
- Wiegner, M., Groß, S., Freudenthaler, V., Schnell, F., and Gasteiger, J.: The May/June 2008 Saharan dust event over Munich: intensive aerosol parameters from lidar measurements, *J. Geophys. Res.*, 116, D23213, doi:10.1029/2011JD016619, 2011.
- Wiegner, M., Gasteiger, J., Groß, S., Schnell, F., Freudenthaler, V., and Forkel, R.: Characterization of the Eyjafjallajökull ash-plume: potential of lidar remote sensing, *Phys. Chem. Earth*, 45–46, 79–86, doi:10.1016/j.pce.2011.01.006, 2012.
- 20 Winker, D. M., Liu, Z., Omar, A., Tackett, J., and Fairlie, D.: CALIOP observations of the transport of ash from the Eyjafjallajökull volcano in April 2010, *J. Geophys. Res.*, 117, D00U15, doi:10.1029/2011JD016499, 2012.
- Zanis, P., Trickl, T., Stohl, A., Wernli, H., Cooper, O., Zerefos, C., Gaeggeler, H., Schnabel, C., Tobler, L., Kubik, P. W., Priller, A., Scheel, H. E., Kanter, H. J., Cristofanelli, P., Forster, C., James, P., Gerasopoulos, E., Delcloo, A., Papayannis, A., and Claude, H.: Forecast, observation and modelling of a deep stratospheric intrusion event over Europe, *Atmos. Chem. Phys.*, 3, 763–777, doi:10.5194/acp-3-763-2003, 2003.
- 25

## Eyjafjallajökull volcanic cloud observed by EARLINET

G. Pappalardo et al.

**Table 1.** Geometrical and optical properties of the volcanic layers for each of the clusters: median value and minimum/maximum range value of base, top, center of mass (CoM), backscatter ( $\beta$ ), and integrated backscatter (IB) at 532 nm are reported together with the maximum backscatter value (peak value) with corresponding altitude, location, and time.

Cluster	Base (km)	Top (km)	CoM (km)	IB ( $1 \times 10^{-3} \text{ sr}^{-1}$ )	$\beta$ ( $1 \times 10^{-7} \text{ m}^{-1} \text{ sr}^{-1}$ )	Peak altitude (km)	MaxBack ( $\text{m}^{-1} \text{ sr}^{-1}$ )	MaxTime (UTC)
Central Europe	1.7	6.5	3.3	1.0315	$3.6 \pm 2.6$	2.8	$26.6 \times 10^{-6}$	16 Apr 2010
	0.2–11.7	1.6–14.5	1.0–13.0	0.016–26	0.8–99.9			– 05:00 (hh)
Central Mediterranean	2.0	5.2	3.1	1.18	$5.8 \pm 3.9$	3.1	$6.7 \times 10^{-6}$	20 Apr 2010
	0.5–13.8	2.1–16.2	1.4–14.5	0.009–9.2	0.4–19.2			– 08:00 (is)
Western Mediterranean	2.5	6.2	4.1	0.6865	$2.1 \pm 1.2$	3	$17.9 \times 10^{-6}$	13 May 2010
	1.1–7.4	1.7–18.1	1.5–7.9	0.003–6	0.2–42.2			– 06:00 (gr)
Eastern Mediterranean	1.8	5.0	2.7	1.988	$7.1 \pm 5.3$	1.3	$5.02 \times 10^{-6}$	22 Apr 2010
	1.0–6.4	1.7–12.2	1.5–7.7	0.02–10	0.6–23.4			– 17:00 (th)
Eastern Europe	3.5	5.7	4.5	0.48	$1.8 \pm 0.5$	2.3	$1.35 \times 10^{-6}$	17 Apr 2010
	1.2–8.2	2.9–13.4	2.8–8.2	0.3–2	0.8–3.4			– 14:00 (mi)

Title Page

Abstract

Introduction

Conclusions

References

Tables

Figures

◀

▶

◀

▶

Back

Close

Full Screen / Esc

Printer-friendly Version

Interactive Discussion



## Eyjafjallajökull volcanic cloud observed by EARLINET

G. Pappalardo et al.

**Table 2.** Values for geometrical properties and optical properties (aerosol optical depth, lidar ratio, linear particle depolarization ratio, and Angström exponent) observed from specific EARLINET multi-wavelength Raman lidar stations in specific periods of the Eyjafjallajökull eruption (April/May 2010). The table reports also the retrieved volcanic aerosol type with corresponding references.

Date and hour	Location	Height (km)	AOD <sub>532</sub>	S <sub>355</sub> (sr)	S <sub>532</sub> (sr)	$\delta$ 355	$\delta$ 532	Ångström <sub>355/532</sub>	Type	Reference
16 Apr 2010, 14:15–15:30 UTC	Leipzig	2.6–4.3	0.35	60 ± 5	60 ± 5		0.33 ± 0.03	0.03 ± 0.40	Ash	Ansmann et al., 2010
17 Apr 2010, 01:40–02:30 UTC	Munich	2.6–3.5		50–60	55 ± 5	0.35 ± 0.02	0.37 ± 0.02	−0.11 ± 0.18	Pure dry ash	Ansmann et al., 2010 Gross et al., 2011 Ansmann et al., 2011
20 Apr 2010, 21:00–23:05 UTC	Potenza	2.0–3.0		42 ± 2	50 ± 3		0.15 ± 0.03	1.4 ± 0.2	Sulfates with some ash	Mona et al., 2012
7 May 2012, 00:30–01:30 UTC	Evora	2.7–3.7	0.07	39 ± 10	32 ± 4			0.68 ± 0.63	Fresh volcanic particles	Sicard et al., 2012
8 May 2012, 03:30–04:30 UTC	Granada	2.6–2.9		47 ± 7	48 ± 16		0.066 ± 0.005	0.79 ± 0.54	Sulfates with some ash	Sicard et al., 2012 Navas et al., 2012
13 May, 20:16–21:01 UTC	Potenza	1.5–2.3		60 ± 11	78 ± 12		0.16 ± 0.07	1.1 ± 0.4	Sulfates with some ash	Mona et al., 2012
17 May 2010, 20:15–20:45 UTC	Cabauw	2.7–6	0.53	42 ± 1	44 ± 24		0.30 ± 0.03	0.1 ± 1.1	Sulfate-ash mixture	Ansmann et al., 2011
19 May 2010, 20:30–21:30 UTC	Athens	3.0–4.8	0.05	67 ± 13	89 ± 3			0.57 ± 0.26	Aged ash/sulfates	Papayannis et al., 2011

Title Page

Abstract

Introduction

Conclusions

References

Tables

Figures

⏪

⏩

◀

▶

Back

Close

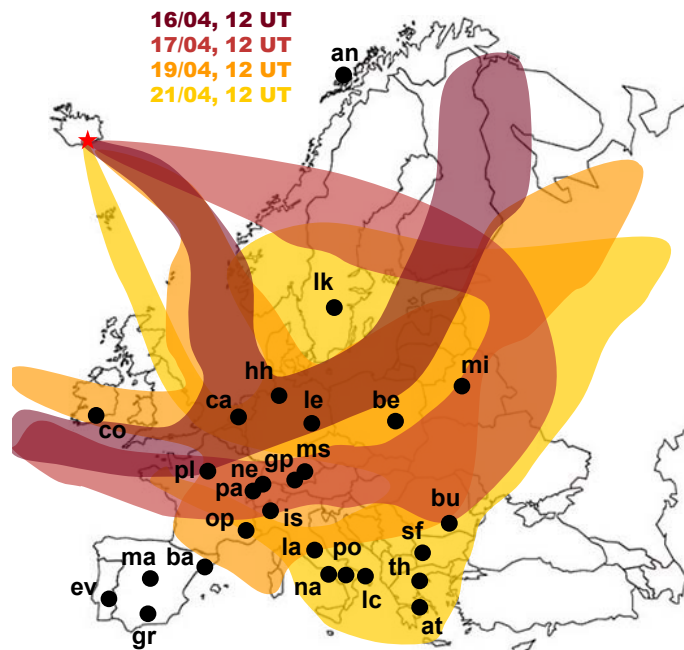
Full Screen / Esc

Printer-friendly Version

Interactive Discussion

## Eyjafjallajökull volcanic cloud observed by EARLINET

G. Pappalardo et al.

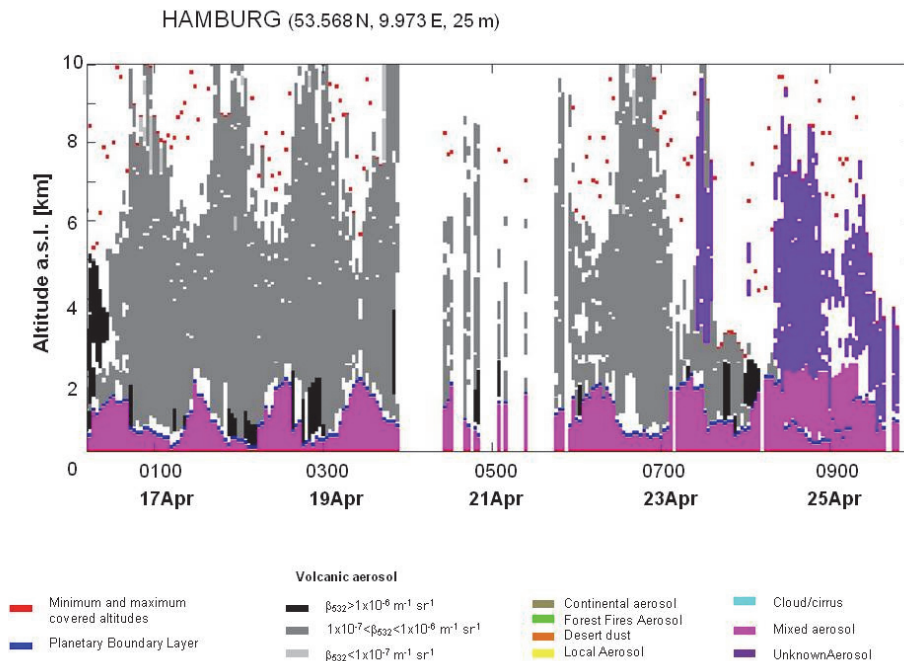


**Fig. 1.** Map of Europe showing the distribution of EARLINET stations (station IDs: an – Andoya, at – Athens, ba – Barcelona, be – Belsk, bu – Bucharest, ca – Cabauw, co – Cork, ev – Evora, gp – Garmisch-Partenkirchen, gr – Granada, hh – Hamburg, is – Ispra, la – L’Aquila, lc – Lecce, le – Leipzig, lk – Linköping, ma – Madrid, ms – Maisach, mi – Minsk, na – Naples, ne – Neuchatel, op – Observatoire de Haute-Provence, pa – Payerne, pl – Palaiseau, po – Potenza, sf – Sofia, th – Thessaloniki) and the dispersion of the Eyjafjallajökull (red star) volcanic aerosol plume during the first week after the major eruption on 14 April 2010. The approximate location of the plume in the 3–5 km height range is given for 12:00 UT on 16 April (dark red), 17 April (light red), 19 April (orange), and 21 April 2010 (yellow).

[Title Page](#)
[Abstract](#)
[Introduction](#)
[Conclusions](#)
[References](#)
[Tables](#)
[Figures](#)
[◀](#)
[▶](#)
[◀](#)
[▶](#)
[Back](#)
[Close](#)
[Full Screen / Esc](#)
[Printer-friendly Version](#)
[Interactive Discussion](#)

**Eyjafjallajökull volcanic cloud observed by EARLINET**

G. Pappalardo et al.



**Fig. 2.** Aerosol mask for the Hamburg EARLINET site in the 15–25 April 2010 period.

[Title Page](#)

[Abstract](#) | [Introduction](#)

[Conclusions](#) | [References](#)

[Tables](#) | [Figures](#)

[◀](#) | [▶](#)

[◀](#) | [▶](#)

[Back](#) | [Close](#)

[Full Screen / Esc](#)

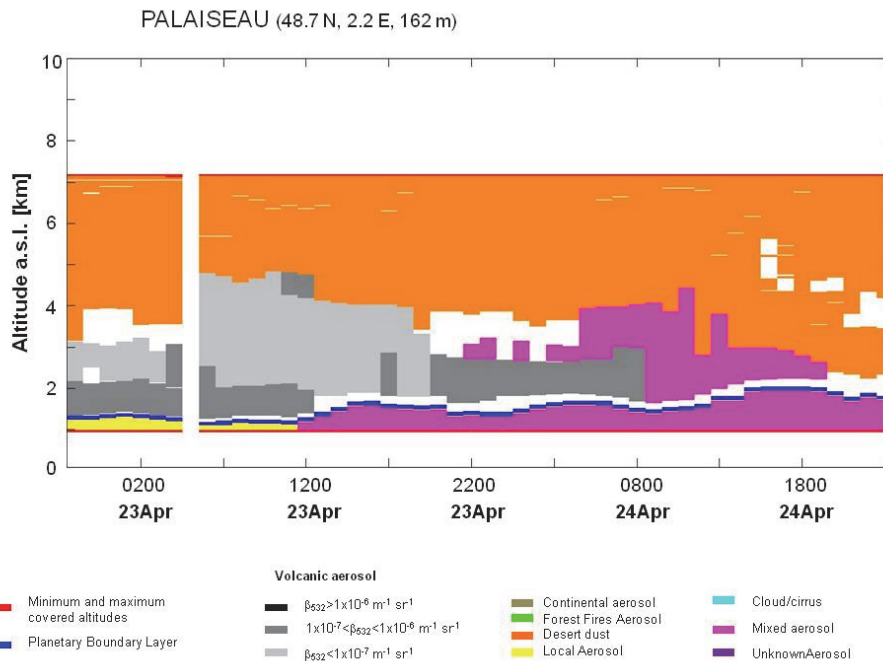
[Printer-friendly Version](#)

[Interactive Discussion](#)



**Eyjafjallajökull volcanic cloud observed by EARLINET**

G. Pappalardo et al.



**Fig. 3.** Aerosol mask for the Palaiseau EARLINET site in the 23–24 April 2010 period.

Title Page

Abstract Introduction

Conclusions References

Tables Figures

◀ ▶

◀ ▶

Back Close

Full Screen / Esc

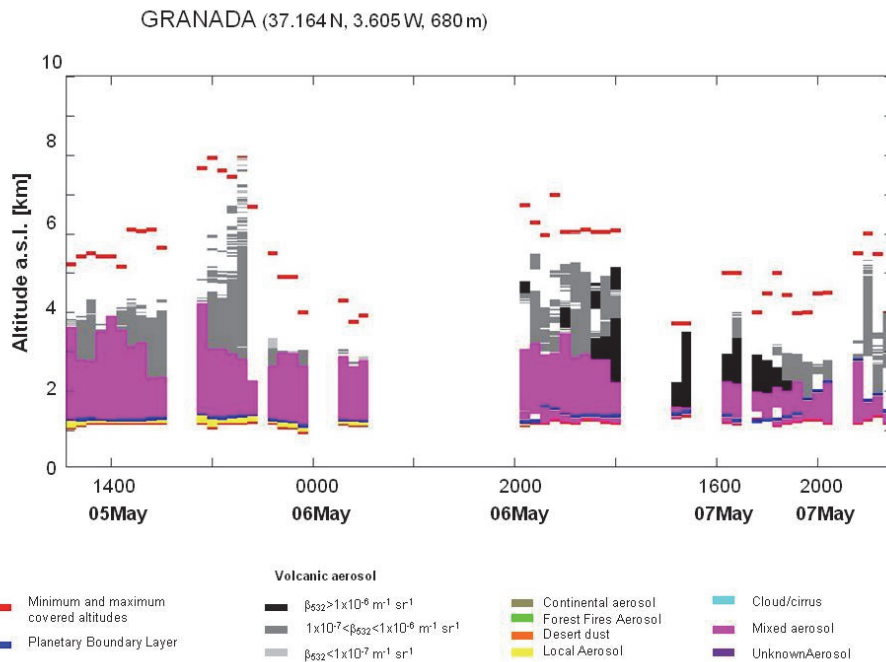
Printer-friendly Version

Interactive Discussion



## Eyjafjallajökull volcanic cloud observed by EARLINET

G. Pappalardo et al.



**Fig. 4.** Aerosol mask for the Granada EARLINET site in the 5–7 May 2010 period.

Title Page

Abstract

Introduction

Conclusions

References

Tables

Figures

◀

▶

◀

▶

Back

Close

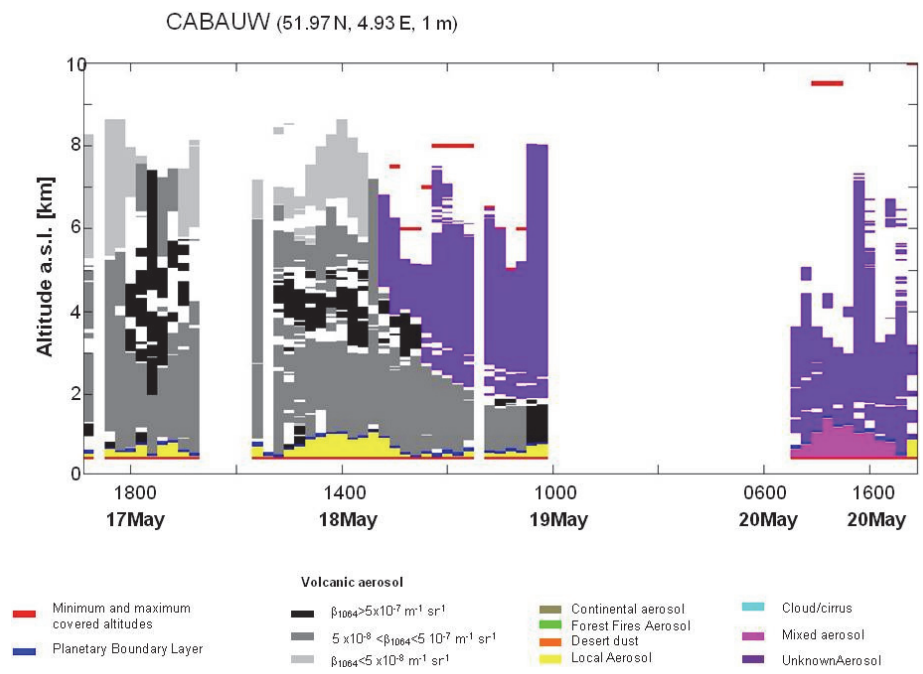
Full Screen / Esc

Printer-friendly Version

Interactive Discussion

**Eyjafjallajökull volcanic cloud observed by EARLINET**

G. Pappalardo et al.



**Fig. 5.** Aerosol mask for the Cabauw EARLINET site in the 17–20 May 2010 period.

Title Page

Abstract Introduction

Conclusions References

Tables Figures

◀ ▶

◀ ▶

Back Close

Full Screen / Esc

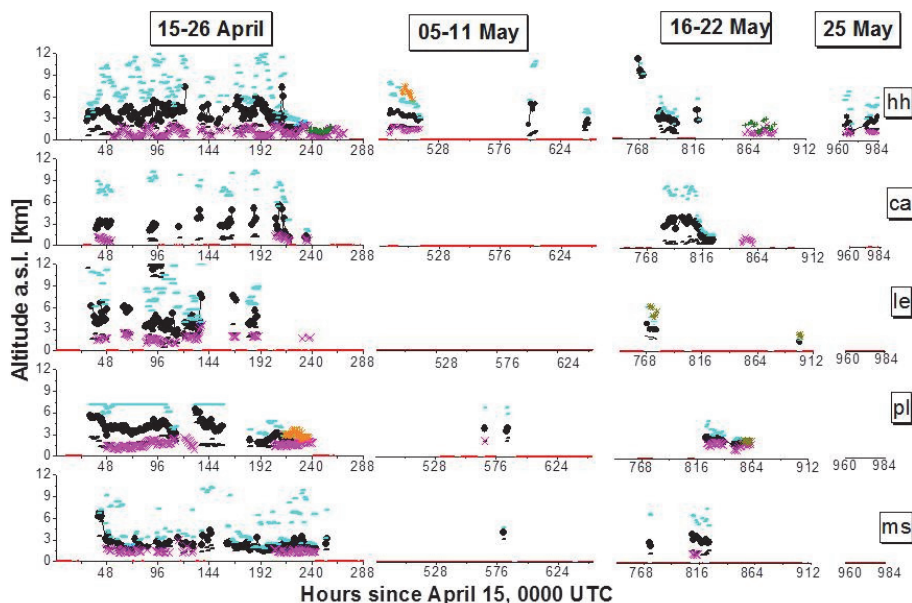
Printer-friendly Version

Interactive Discussion



## Eyjafjallajökull volcanic cloud observed by EARLINET

G. Pappalardo et al.



**Fig. 6.** Central Europe cluster: Hamburg (hh), Cabauw (ca), Leipzig (le), Palaiseau (pl) and Maisach (ms). The following quantities are reported hourly: center of mass of the identified volcanic layer (black dots), base and top of the identified volcanic layer (black and cyan lines, respectively). Mixing with dust and continental aerosol is highlighted by orange and dark yellow symbols, respectively. Mixing with local aerosol above the PBL is reported in green. The intrusion in the PBL and, therefore, the mixing with local aerosol is indicated by a magenta cross located at the top of the PBL as obtained from lidar observations. Red line on the abscissa axes indicates no measurements.

Title Page

Abstract

Introduction

Conclusions

References

Tables

Figures

◀

▶

◀

▶

Back

Close

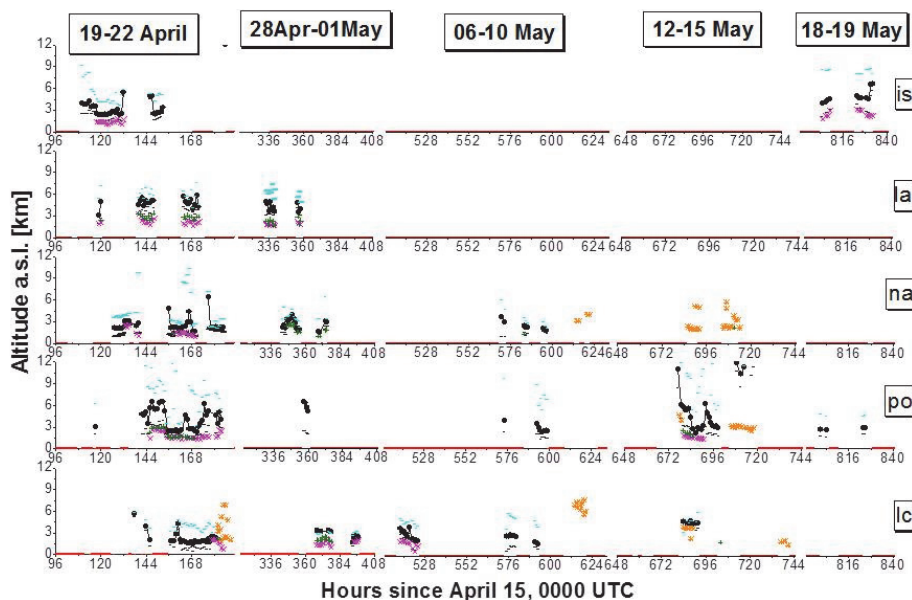
Full Screen / Esc

Printer-friendly Version

Interactive Discussion

## Eyjafjallajökull volcanic cloud observed by EARLINET

G. Pappalardo et al.



**Fig. 7.** Central Mediterranean cluster: Ispra (is), L'Aquila (la), Napoli (na), Potenza (po) and Lecce (lc). The following quantities are reported hourly: center of mass of the identified volcanic layer (black dots), base and top of the identified volcanic layer (black and cyan lines, respectively). Mixing with dust and continental aerosol is highlighted by orange and dark yellow symbols, respectively. Mixing with local aerosol above the PBL is reported in green. The intrusion in the PBL and, therefore, the mixing with local aerosol is indicated by a magenta cross located at the top of the PBL as obtained from lidar observations. Red line on the abscissa axes indicates no measurements.

Title Page

Abstract

Introduction

Conclusions

References

Tables

Figures

◀

▶

◀

▶

Back

Close

Full Screen / Esc

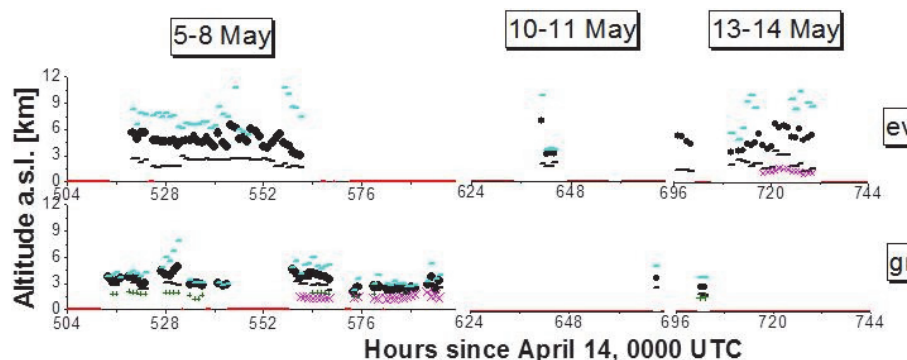
Printer-friendly Version

Interactive Discussion



## Eyjafjallajökull volcanic cloud observed by EARLINET

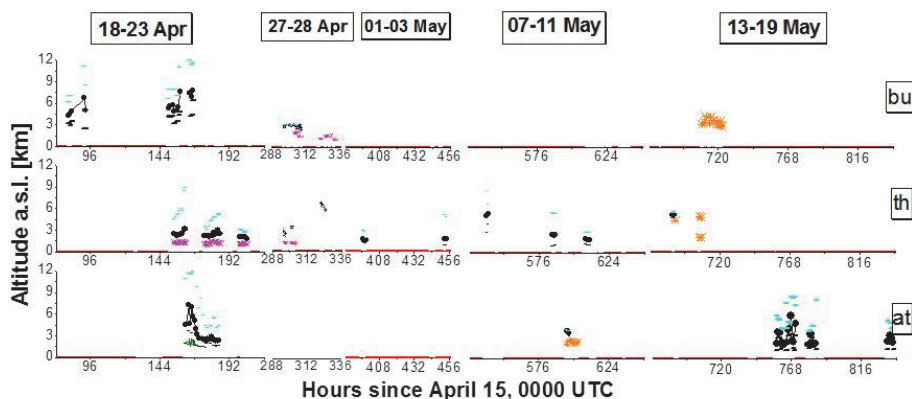
G. Pappalardo et al.



**Fig. 8.** Western Mediterranean cluster: Evora (ev) and Granada (gr). The following quantities are reported hourly: center of mass of the identified volcanic layer (black dots), base and top of the identified volcanic layer (black and cyan lines, respectively). Mixing with dust and continental aerosol is highlighted by orange and dark yellow symbols, respectively. Mixing with local aerosol above the PBL is reported in green. The intrusion in the PBL and, therefore, the mixing with local aerosol is indicated by a magenta cross located at the top of the PBL as obtained from lidar observations. Red line on the abscissa axes indicates no measurements.

## Eyjafjallajökull volcanic cloud observed by EARLINET

G. Pappalardo et al.

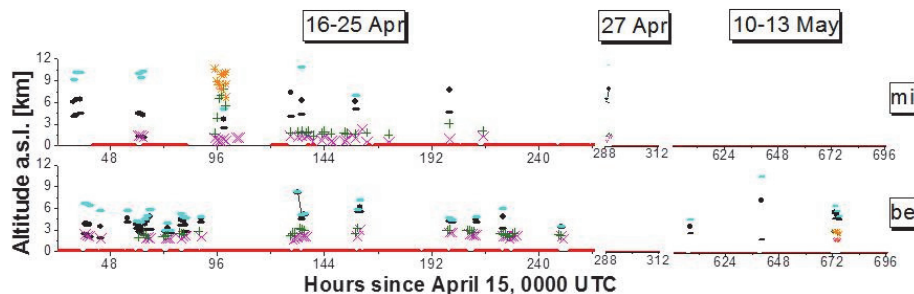


**Fig. 9.** Eastern Mediterranean cluster: Bucharest (bu), Thessaloniki (th) and Athens (at). The following quantities are reported hourly: center of mass of the identified volcanic layer (black dots), base and top of the identified volcanic layer (black and cyan lines, respectively). Mixing with dust and continental aerosol is highlighted by orange and dark yellow symbols, respectively. Mixing with local aerosol above the PBL is reported in green. The intrusion in the PBL and, therefore, the mixing with local aerosol is indicated by a magenta cross located at the top of the PBL as obtained from lidar observations. Red line on the abscissa axes indicates no measurements.

[Title Page](#)
[Abstract](#)
[Introduction](#)
[Conclusions](#)
[References](#)
[Tables](#)
[Figures](#)
[⏪](#)
[⏩](#)
[◀](#)
[▶](#)
[Back](#)
[Close](#)
[Full Screen / Esc](#)
[Printer-friendly Version](#)
[Interactive Discussion](#)

## Eyjafjallajökull volcanic cloud observed by EARLINET

G. Pappalardo et al.



**Fig. 10.** Eastern Europe cluster: Minsk (mi) and Belsk (be). The following quantities are reported hourly: center of mass of the identified volcanic layer (black dots), base and top of the identified volcanic layer (black and cyan lines, respectively). Mixing with dust and continental aerosol is highlighted by orange and dark yellow symbols, respectively. Mixing with local aerosol above the PBL is reported in green. The intrusion in the PBL and, therefore, the mixing with local aerosol is indicated by a magenta cross located at the top of the PBL as obtained from lidar observations. Red line on the abscissa axes indicates no measurements.

Title Page

Abstract

Introduction

Conclusions

References

Tables

Figures

◀

▶

◀

▶

Back

Close

Full Screen / Esc

Printer-friendly Version

Interactive Discussion

## Eyjafjallajökull volcanic cloud observed by EARLINET

G. Pappalardo et al.

#	Name	Datatype	Length/Set	Unsign...	Allow NULL	Zerofill	Default
1	ID	BIGINT	20	<input type="checkbox"/>	<input type="checkbox"/>	<input type="checkbox"/>	AUTO_INCREMENT
2	location	VARCHAR	100	<input type="checkbox"/>	<input type="checkbox"/>	<input type="checkbox"/>	No default
3	latitude_degrees_north	FLOAT		<input type="checkbox"/>	<input type="checkbox"/>	<input type="checkbox"/>	No default
4	longitude_degrees_east	FLOAT		<input type="checkbox"/>	<input type="checkbox"/>	<input type="checkbox"/>	No default
5	altitude_asl	FLOAT		<input type="checkbox"/>	<input type="checkbox"/>	<input type="checkbox"/>	No default

**Fig. A1.** Parameters included in the table Stations of the Eyja2010 relational database.

Title Page

Abstract

Introduction

Conclusions

References

Tables

Figures

⏪

⏩

◀

▶

Back

Close

Full Screen / Esc

Printer-friendly Version

Interactive Discussion



## Eyjafjallajökull volcanic cloud observed by EARLINET

G. Pappalardo et al.

#	Name	Datatype	Length/Set	Unsign...	Allow NULL	Zerofill	Default	Comment
1	ID	BIGINT	20	<input type="checkbox"/>	<input type="checkbox"/>	<input type="checkbox"/>	AUTO_INCREMENT	
2	_station_ID	BIGINT	20	<input type="checkbox"/>	<input type="checkbox"/>	<input type="checkbox"/>	No default	
3	earlinet_filename	VARCHAR	100	<input type="checkbox"/>	<input checked="" type="checkbox"/>	<input type="checkbox"/>	NULL	
4	reference_time	INT	11	<input type="checkbox"/>	<input checked="" type="checkbox"/>	<input type="checkbox"/>	NULL	Number of hours si...
5	detection_wavelength	FLOAT		<input type="checkbox"/>	<input type="checkbox"/>	<input type="checkbox"/>	No default	
6	skipped_fraction	FLOAT		<input type="checkbox"/>	<input type="checkbox"/>	<input type="checkbox"/>	No default	
7	measurement_start	TIME		<input type="checkbox"/>	<input type="checkbox"/>	<input type="checkbox"/>	No default	
8	measurement_stop	TIME		<input type="checkbox"/>	<input type="checkbox"/>	<input type="checkbox"/>	No default	
9	min_height	FLOAT		<input type="checkbox"/>	<input type="checkbox"/>	<input type="checkbox"/>	No default	
10	max_height	FLOAT		<input type="checkbox"/>	<input type="checkbox"/>	<input type="checkbox"/>	No default	
11	pbl_height	FLOAT		<input type="checkbox"/>	<input checked="" type="checkbox"/>	<input type="checkbox"/>	NULL	
12	first_height_below_error_treshold	FLOAT		<input type="checkbox"/>	<input type="checkbox"/>	<input type="checkbox"/>	No default	
13	pbl_intrusion	TINYINT	1	<input type="checkbox"/>	<input checked="" type="checkbox"/>	<input type="checkbox"/>	NULL	

**Fig. A2.** Parameters included in the table Backscatters of the Eyja2010 relational database.

Title Page

Abstract

Introduction

Conclusions

References

Tables

Figures



Back

Close

Full Screen / Esc

Printer-friendly Version

Interactive Discussion



## Eyjafjallajökull volcanic cloud observed by EARLINET

G. Pappalardo et al.

#	Name	Datatype	Length/Set	Unsign...	Allow NULL	Zerofill	Default
1	ID	BIGINT	20	<input type="checkbox"/>	<input type="checkbox"/>	<input type="checkbox"/>	AUTO_INCREMENT
2	_backscatter_ID	BIGINT	20	<input type="checkbox"/>	<input type="checkbox"/>	<input type="checkbox"/>	No default
3	base	FLOAT		<input type="checkbox"/>	<input type="checkbox"/>	<input type="checkbox"/>	No default
4	top	FLOAT		<input type="checkbox"/>	<input type="checkbox"/>	<input type="checkbox"/>	No default
5	center_of_mass	FLOAT		<input type="checkbox"/>	<input type="checkbox"/>	<input type="checkbox"/>	No default
6	altitude_of_backscatter_peak	FLOAT		<input type="checkbox"/>	<input type="checkbox"/>	<input type="checkbox"/>	No default
7	integrated_backscatter	FLOAT		<input type="checkbox"/>	<input type="checkbox"/>	<input type="checkbox"/>	No default
8	mean_backscatter	FLOAT		<input type="checkbox"/>	<input type="checkbox"/>	<input type="checkbox"/>	No default
9	std_backscatter	FLOAT		<input type="checkbox"/>	<input type="checkbox"/>	<input type="checkbox"/>	No default
10	mean_relative_error_on_backscatter	FLOAT		<input type="checkbox"/>	<input type="checkbox"/>	<input type="checkbox"/>	No default
11	backscatter_peak_value	FLOAT		<input type="checkbox"/>	<input type="checkbox"/>	<input type="checkbox"/>	No default

**Fig. A3.** Parameters included in the table Volcanic\_Layers of the Eyja2010 relational database.

Title Page

Abstract

Introduction

Conclusions

References

Tables

Figures

⏪

⏩

◀

▶

Back

Close

Full Screen / Esc

Printer-friendly Version

Interactive Discussion



## Eyjafjallajökull volcanic cloud observed by EARLINET

G. Pappalardo et al.

#	Name	Datatype	Length/Set	Unsign...	Allow NULL	Zerofill	Default
1	ID	BIGINT	20	<input type="checkbox"/>	<input type="checkbox"/>	<input type="checkbox"/>	AUTO_INCREMENT
2	_backscatter_ID	BIGINT	20	<input type="checkbox"/>	<input type="checkbox"/>	<input type="checkbox"/>	No default
3	mixing_aerosol_type	VARCHAR	100	<input type="checkbox"/>	<input type="checkbox"/>	<input type="checkbox"/>	No default
4	base	FLOAT		<input type="checkbox"/>	<input type="checkbox"/>	<input type="checkbox"/>	No default
5	top	FLOAT		<input type="checkbox"/>	<input type="checkbox"/>	<input type="checkbox"/>	No default
6	center_of_mass	FLOAT		<input type="checkbox"/>	<input type="checkbox"/>	<input type="checkbox"/>	No default
7	altitude_of_backscatter_peak	FLOAT		<input type="checkbox"/>	<input type="checkbox"/>	<input type="checkbox"/>	No default
8	integrated_backscatter	FLOAT		<input type="checkbox"/>	<input type="checkbox"/>	<input type="checkbox"/>	No default
9	mean_backscatter	FLOAT		<input type="checkbox"/>	<input type="checkbox"/>	<input type="checkbox"/>	No default
10	std_backscatter	FLOAT		<input type="checkbox"/>	<input type="checkbox"/>	<input type="checkbox"/>	No default
11	mean_relative_error_on_backscatter	FLOAT		<input type="checkbox"/>	<input type="checkbox"/>	<input type="checkbox"/>	No default
12	backscatter_peak_value	FLOAT		<input type="checkbox"/>	<input type="checkbox"/>	<input type="checkbox"/>	No default

**Fig. A4.** Parameters included in the table Mixed\_Layers of the Eyja2010 relational database.

Title Page

Abstract

Introduction

Conclusions

References

Tables

Figures

⏪

⏩

◀

▶

Back

Close

Full Screen / Esc

Printer-friendly Version

Interactive Discussion

