

This discussion paper is/has been under review for the journal Atmospheric Chemistry and Physics (ACP). Please refer to the corresponding final paper in ACP if available.

# Improved SAGE II cloud/aerosol categorization and observations of the asian tropopause aerosol layer: 1989–2005

L. W. Thomason<sup>1</sup> and J.-P. Vernier<sup>2</sup>

<sup>1</sup>NASA Langley Research Center, Hampton, Virginia, USA

<sup>2</sup>Science Systems and Applications, Inc., Hampton, Virginia, USA

Received: 10 July 2012 – Accepted: 25 September 2012 – Published: 19 October 2012

Correspondence to: L. W. Thomason (l.w.thomason@nasa.gov),  
J.-P. Vernier (jeanpaul.vernier@nasa.gov)

Published by Copernicus Publications on behalf of the European Geosciences Union.

## SAGE II cloud/aerosol categorization and observations

L. W. Thomason and  
J.-P. Vernier

Title Page

Abstract

Introduction

Conclusions

References

Tables

Figures

⏪

⏩

◀

▶

Back

Close

Full Screen / Esc

Printer-friendly Version

Interactive Discussion

## Abstract

Observations by CALIPSO have recently been used to identify an aerosol enhancement associated with the Asian Monsoon anticyclone. The Asian Tropopause Aerosol Layer (ATAL) is analogous to observed enhancements in long-lived trace gas species like CO. Since the CALIPSO record only begins in 2006, the question of how long this aerosol feature has been present requires a new look at the long-lived SAGE II data sets despite significant hurdles to its use in the subtropical upper troposphere. We found that a new and more robust method for identifying and eliminating cloud effects from the SAGE II data set was required and, herein, we describe a cloud identification method that appears to capture cloud/aerosol events more effectively than early methods. In addition, we summarize additional challenges to observing the ATAL layer using SAGE II observations. Finally, we perform analyses of the upper troposphere, focusing on periods in which the UTLS is relatively free of volcanic material (1989–1990 and after 1996). We find that there is no evidence of ATAL in the SAGE II data prior to 1998. After 1998, it is clear that aerosol in the upper troposphere in the ATAL region is substantially enhanced relative to the period before that time. In addition, the data generally supports the presence of the ATAL layer beginning in 1999 and continuing through the end of the mission though some years (e.g. 2003) are complicated by the presence of episodic enhancements most likely of volcanic origin.

## 1 Introduction

The Stratospheric Aerosol and Gas Experiment (SAGE II) provided ozone, NO<sub>2</sub>, water vapor concentration and multi-wavelength aerosol extinction coefficient profiles from the mid troposphere through the stratosphere during a mission that lasted from October 1984 through August 2005. These measurements have provided crucial data in assessing the state of ozone and aerosol trends (e.g. SPARC, 2006) and remain a valuable resource to understand changes in the stratosphere and upper troposphere (UTLS).

### SAGE II cloud/aerosol categorization and observations

L. W. Thomason and  
J.-P. Vernier

Title Page

Abstract

Introduction

Conclusions

References

Tables

Figures



Back

Close

Full Screen / Esc

Printer-friendly Version

Interactive Discussion



**SAGE II cloud/aerosol categorization and observations**L. W. Thomason and  
J.-P. Vernier[Title Page](#)[Abstract](#)[Introduction](#)[Conclusions](#)[References](#)[Tables](#)[Figures](#)[Back](#)[Close](#)[Full Screen / Esc](#)[Printer-friendly Version](#)[Interactive Discussion](#)

The Cloud-Aerosol Lidar Pathfinder Satellite Observation (CALIPSO) has made global 532-nm aerosol backscatter profiles since June 2006. While primarily focused on aerosol and thin cloud in the troposphere, its measurements have nonetheless provided a wealth of information on polar stratospheric clouds (e.g. Pitts et al., 2009) and aerosol in the stratosphere and upper troposphere (e.g. Vernier, 2009). Combined studies of the upper troposphere and stratosphere using the combination of SAGE II and CALIPSO have been performed (Vernier et al., 2011b) which have demonstrated both the challenges and the potential for these studies. While both make measurements of attributes of aerosol, the parameters are not completely interchangeable (multiwavelength aerosol extinction coefficient versus aerosol backscatter coefficient and depolarization). In addition, sampling rates are vastly different and, perhaps the most critical complicating factor, there is no overlap period between the two instruments. Vernier et al. (2011b) has shown (using GOMOS as an intermediary) that there is broad consistency between the measurements of SAGE II and CALIPSO though a detailed comparison is not possible in the UTLS.

In Vernier et al. (2011a), the presence of an enhancement in aerosol backscatter within the Asian monsoon anticyclone (the Asian Tropopause Aerosol Layer or ATAL) was identified for the first time using CALIPSO observations. While highly variable in intensity from year to year, CALIPSO observations establish that it appears as early as May and persists as late as September but is primarily a JJA phenomenon and is strongly associated with the Asian Monsoon anticyclone. The spatial extent was between 14 and 18 km, between roughly 15 and 35° N and between about 0 and 150° E. While CALIPSO observations show the presence of ATAL, there is no evidence of enhanced depolarization suggesting that the increase in backscatter is likely to be in the form of liquid aerosol rather than solid aerosol. Some balloon-borne measurements from Tibet may support the presence of the ATAL layer in the same time frame prior to the CALIPSO observation however they may also reflect volcanic activity (Tobo et al., 2007; Kim et al., 2003). However, beyond this inference, there is little in the CALIPSO measurements themselves to suggest the source or composition of the aerosol. On

**SAGE II cloud/aerosol categorization and observations**

L. W. Thomason and J.-P. Vernier

Title Page

Abstract Introduction

Conclusions References

Tables Figures

⏪ ⏩

◀ ▶

Back Close

Full Screen / Esc

Printer-friendly Version

Interactive Discussion

the other hand, up to this time, no analysis of SAGE II data has suggested the presence of the ATAL layer. This is not totally surprising due to a number of hurdles in this analysis. Observations by SAGE II in subtropics occur at a relatively low rate even by occultation standards and, after mid-2000, SAGE II operated captured only one occultation per orbit (rather than 2) due to an issue with azimuth prepositioning (ordering the instrument to face the direction where we believed an event would occur). In addition, the identification of events influenced by the presence of clouds is particularly important in the tropics and subtropics. At the same time, identifying cloud events at any latitude/altitude is subtle and missing even very small cloud effects can have an overwhelming effect on analyses in the troposphere. A previous effort to separate between cloud and purely aerosol observations by SAGE II has been shown to miss categorize some cloud events as aerosol (SPARC, 2006) and any effort to detect the ATAL layer in the SAGE II data must rectify that error.

Herein, we describe a new cloud identification method that appears to capture cloud/aerosol events more effectively than early methods (Kent et al., 1993, 1998). In addition, we summarize additional challenges to observing the ATAL layer using SAGE II observations. Finally, we perform analyses of the upper troposphere, focusing on periods in which the UTLS is relatively free of volcanic material (1989–1990 and after 1996). It should be noted that even in these periods, small volcanic events occasionally complicate the interpretation of the analyses. Finally, we demonstrate that there is no evidence of ATAL in the SAGE II data prior to 1998. After 1998, it is clear that aerosol in the upper troposphere in the ATAL region is substantially enhanced relative to the period before that time. In addition, the data generally supports the presence of the ATAL layer beginning in 1999 and continuing through the end of the mission though some years (e.g. 2003) are complicated by the presence of episodic enhancements most likely of volcanic origin.



## 2 Characteristics of SAGE II aerosol extinction coefficient measurements in the UTLS

While robust and reliable in the stratosphere, the interpretation of SAGE II aerosol extinction coefficient measurements in the upper troposphere/lower stratosphere (UTLS) are complicated by the presence of clouds and a sample size that decreases within increasing depth into the troposphere. In order to evaluate aerosol properties in the UTLS, measurements influenced by cloud presence must be identified and excluded from the analysis. If this process is done effectively, some regions, particularly associated with Western Pacific warm pool, have few observations below 14 km. We observe that the transition between SAGE II cloud and aerosol measurements is a continuum rather than manifesting itself as discrete modes primarily due to the geometry of the measurements. As a result, our ability to distinguish between these two types of observations is not clear cut. Ultimately, cloud/aerosol discrimination relies on an empirical assessment of the expected behavior of mixed field of views of clouds and aerosol. The process we have developed is discussed below.

### 2.1 Multiwavelength extinction coefficient reliability

SAGE II aerosol extinction coefficient measurements have been demonstrated to be robust in the stratosphere even at the low levels observed the early 2000s with measurement uncertainties at 1020 nm that are often less than 10% (Thomason et al., 2008). The credit for the quality of these measurements lies substantially with the solar occultation method employed by the SAGE series of instruments. The long paths and bright radiant target (the Sun) allow a small field of view (FOV) and high vertical resolution while still producing a robust extinction signature. For example, between the tropopause and 28 km, ~50% of the signal at 1020 nm is due to aerosols (with rest due to molecular scattering) and 1020-nm extinction coefficient values, that are between  $10^{-5}$  (near 28 km) and  $3 \times 10^{-4} \text{ km}^{-1}$  (near 15 km), remain reliable to extinction at least as low as  $5 \times 10^{-6} \text{ km}^{-1}$  (Thomason et al., 2008). The shorter wavelength

### SAGE II cloud/aerosol categorization and observations

L. W. Thomason and  
J.-P. Vernier

Title Page

Abstract

Introduction

Conclusions

References

Tables

Figures

◀

▶

◀

▶

Back

Close

Full Screen / Esc

Printer-friendly Version

Interactive Discussion



aerosol channels are not as robust due to a combination of increased molecular scattering (following wavelength to the fourth power) and absorption by gases such as ozone. The shortest wavelength aerosol extinction coefficient measurements (those at 386 and 452 nm) do not reliably extend below 12 km and they are not particularly useful to this study. On the other hand, the measurements made at 525 nm are reliable in the upper troposphere/lower stratosphere (UTLS) and available as low as 5 km despite substantial impacts by ozone absorption and molecular scattering. The inclusion of this channel is crucial since it contributes significantly to the information content of SAGE II aerosol measurements specifically allowing a rough measure of aerosol “size”.

## 2.2 Spatial sampling

For an instrument in a mid-inclination, low-Earth orbit such as SAGE II, spacecraft sunrise and sunset occultation events occur  $\sim 30$  times per day along two latitudes circles that slowly progress between roughly  $70^\circ$  S and  $70^\circ$  N over the course of 4 to 6 weeks. Following a gap in SAGE II operations covering the last third of 2001, only one event type was acquired per day and sampling was reduced to  $\sim 15$  events/day for the remainder of the SAGE II mission. Due to the sampling provided by the solar occultation technique and its concomitant month long period to complete a sweep of latitude, spatial/temporal resolution of aerosol extinction coefficient depictions (or other components of the SAGE II measurement ensemble) is limited. The sampling becomes even more restricted below the tropopause (particularly in the tropics) as many SAGE II events (profile sets) are terminated by the presence of cloud. Event termination, often (imprecisely) called “saturation”, can also come about due to thick aerosol (e.g. the post-Pinatubo period mid-1991 through 1993) and molecular effects at low altitudes for the short wavelength channels though neither of these conditions is relevant for the 525 and 1020-nm aerosol extinction coefficient channels in the altitude range and time periods we consider in this paper.

SAGE II can make useful measurements up to a Line-Of-Sight (LOS) optical depth of  $\sim 7$ . Given the long horizontal paths the LOS rays follow through the atmosphere,

### SAGE II cloud/aerosol categorization and observations

L. W. Thomason and  
J.-P. Vernier

Title Page

Abstract

Introduction

Conclusions

References

Tables

Figures

⏪

⏩

◀

▶

Back

Close

Full Screen / Esc

Printer-friendly Version

Interactive Discussion



**SAGE II cloud/aerosol categorization and observations**L. W. Thomason and  
J.-P. Vernier[Title Page](#)[Abstract](#)[Introduction](#)[Conclusions](#)[References](#)[Tables](#)[Figures](#)[⏪](#)[⏩](#)[◀](#)[▶](#)[Back](#)[Close](#)[Full Screen / Esc](#)[Printer-friendly Version](#)[Interactive Discussion](#)

at 1020-nm, this is roughly the equivalent of a vertical aerosol optical depth for SAGE II of  $\sim 0.15$ . In practice, the termination altitude of a profile is not a well defined event so we have adopted a convention by which a profile set is terminated at the first altitude at which 1020-nm aerosol extinction exceeds  $2 \times 10^{-2} \text{ km}^{-1}$  or the LOS optical depth exceeds 7. We find that extinction value is an effective cutoff for profiles and also isolates the data analysis from some occasional anomalous behavior (likely an instrument artifact) at altitudes below where this extinction coefficient value is initially observed (top downward). In the time period of interest, the cutoff value occurs as a distinct step function from much lower extinctions strongly suggesting a cloud top.

Wang et al. (2003) showed that, between 1985 and 2002, the SAGE II 1020-nm extinction coefficient profile termination altitude is a strong function of latitude. The zonally-averaged altitude at which 50 % profiles are terminated runs from about 5 km in high to subtropical latitudes but increases rapidly in the tropics to  $\sim 11$  km. The event termination altitude in the tropics shows a strong longitudinal dependence with the highest altitudes found in the deep convection zones over South America, Africa, and particularly Indonesia. As a result, sampling at all latitudes and longitudes becomes relatively sparse at lower altitudes but is particularly acute in the tropical convection areas where meaningful tropospheric aerosol analysis is not always possible. Much of the analysis shown later in this paper is based on seasonal averages spanning 1999–2005 and data availability as a function of latitude and altitude is mostly driven by the requirement that 525-nm aerosol extinction be available. Globally, in each season, there are approximately 10 000 profile sets and essentially all of these profiles are available above 17 km. At 10 km about 60 % of the profiles still provide usable measurements, at 6 km the fraction available has dropped to about 30 %. The fractions are not strongly dependent on year during except in the few years following the Mt. Pinatubo eruption.

### 2.3 Measurement volume

Solar occultation is well suited to making aerosol coefficient measurements in the stratosphere where homogeneity along the LOS is not a major concern except for

**SAGE II cloud/aerosol categorization and observations**L. W. Thomason and  
J.-P. Vernier[Title Page](#)[Abstract](#)[Introduction](#)[Conclusions](#)[References](#)[Tables](#)[Figures](#)[⏪](#)[⏩](#)[◀](#)[▶](#)[Back](#)[Close](#)[Full Screen / Esc](#)[Printer-friendly Version](#)[Interactive Discussion](#)

relatively rare events like polar stratospheric clouds. The SAGE series of instruments implement solar occultation using scans across the Sun perpendicular to the Earth's surface during each time the Sun is obscured (or occluded) by the atmosphere relative to the spacecraft as shown in Fig. 1a. The solar scans extend across the edges of the Sun, and knowledge of the location of the Sun's edges along with knowledge of the spacecraft location, and time permit very high accuracy in determining the altitude of the tangent point (closest approach to the Earth's surface) along a line-of-sight (LOS) between the instrument and the Sun for each measurement. Since the Sun is observed above the atmosphere during each event, the instrument is effectively calibrated during each event and is insensitive to changes in the instrument sensitivity (count levels) throughout the 21-yr lifetime of the instrument. The scanning pattern is shown in Fig. 1b and it allows multiple samples ( $\sim 15$ ) in the 0.5-km altitude sampling bins. Averaging these samples reduces measurement noise and produces the LOS measurement uncertainty that is the primary source of random noise in the final data products. A feature of this scanning process is that the volume of atmosphere represented in each altitude bin is large compared to the nominal LOS volume whose rough dimensions in the tangent altitude bin are  $\sim 125$  km (along the LOS) by the FOV of 5 km (horizontal) by 0.5 km (vertical). Given a spacecraft velocity of  $\sim 7$  km s $^{-1}$  and a concomitant movement of the tangent location, the samples at a given altitude are relatively sparsely spaced over several hundred kilometers in the horizontal direction. Based on the high quality and low measurement noise observed in the SAGE II ozone and aerosol measurements in the stratosphere, the measurement volume does not appear to impact the quality of those measurements. In the upper troposphere, where over the scale of hundreds of kilometers variations in aerosol levels and particularly cloud presence can be substantial, the resulting mean measurement could easily represent a mixture of individual variable aerosol and cloud measurements. The sampling volume of SAGE II measurements is discussed in detail in Thomason et al. (2004).



## 2.4 The interpretation of observations

Thomason et al. (2008) provides an in-depth discussion of the limitations in the derivation of bulk aerosol properties like surface area density using SAGE II measurements. They showed that there is incomplete information on the details of the underlying aerosol size distribution in the SAGE II extinction coefficient measurements. The nature of the extinction kernels make this relatively obvious particularly when limited to only the 525 and 1020-nm channels. Figure 2a shows these extinction kernels (in per unit volume of aerosol) for liquid sulfate aerosol at stratospheric temperatures. While there is a clear difference in these kernels, the ratio of these channels, shown in Fig. 2b, shows that there is only size information for particles less than 0.5  $\mu\text{m}$ . Since extinction integrates the underlying size distribution across these kernels, we find that the measured ratio of 525 to 1020-nm aerosol extinction coefficients is close to 1 whenever extinction is dominated by particles larger than 0.5  $\mu\text{m}$ . This can be relevant to our study since it is difficult to conclusively distinguish between large aerosol and cloud. This was commonly observed during the immediate post-Pinatubo period from 1991 through 1993 when stratospheric aerosol levels were more than 100 times larger than in the early 2000s with a concomitant increase in mean particle size. While we generally have based cloud/aerosol discrimination in SAGE II measurements on this extinction ratio, it is important to keep in mind that a small extinction ratio is not a necessary indicator of cloud presence.

Beyond particle size issues, there are additional and substantial ambiguities regarding cloud observations particularly related to optically thin or non-opaque cirrus arising out of the characteristics of the measurement volume. This was demonstrated by Kent et al. (1997) who used data from the Lidar In-space Technology Experiment (LITE) to simulate occultation cloud observations. The ambiguities result from the fact that clouds may not occur at the LOS tangent point but may occur anywhere along the path through the atmosphere and occupy anywhere from the entire path to very short segments of the paths. Kent et al. (1997) demonstrated that either opaque or non-opaque

### SAGE II cloud/aerosol categorization and observations

L. W. Thomason and  
J.-P. Vernier

Title Page

Abstract

Introduction

Conclusions

References

Tables

Figures



Back

Close

Full Screen / Esc

Printer-friendly Version

Interactive Discussion



**SAGE II cloud/aerosol categorization and observations**L. W. Thomason and  
J.-P. Vernier[Title Page](#)[Abstract](#)[Introduction](#)[Conclusions](#)[References](#)[Tables](#)[Figures](#)[Back](#)[Close](#)[Full Screen / Esc](#)[Printer-friendly Version](#)[Interactive Discussion](#)

clouds observed by an occultation instrument may occur at or above the altitude in which it is inferred to occur. The difference between the actual height and the inferred height is generally small but can reach as much as 5 km. As a result, cloud events should be interpreted as occurring at or above the apparent altitude. In addition, since the extinction coefficients associated with clouds are assumed to be uniformly spread in the tangent altitude layer, the resulting extinction is a lower limit for extinction by a cloud. Figure 3 shows a schematic of 3 identical clouds occurring at different locations along the LOS: at the tangent altitude and two altitudes well above the tangent altitude. Since the distance traversed through each cloud is also different, the LOS optical depth contributed by the cloud is also different. Since we have no way of knowing where along the LOS the clouds occur, SAGE data processing necessarily assumes that each is uniformly distributed in the layer located at the tangent altitude and the reported aerosol extinction coefficient derived for the tangent altitude could be quite different for each cloud position and path.

Figure 4 shows the density in 1020-nm extinction and 525 to 1020-nm extinction ratio space for all SAGE II observations at 18 km in December-January-February (DJF) for 1999 through 2005. We see a strong, relatively compact maximum near  $10^{-4} \text{ km}^{-1}$  1020-nm extinction coefficient and 4.5 in extinction ratio (referred to as  $k_a$  and  $R_a$  below). Though in low numbers, we also see a long arm of events stretching from this main core down toward values near  $10^{-2} \text{ km}^{-1}$  (near the limit of the observation domain) and extinction ratios of 1 ( $R_c$ ). Following the discussion above, members of this arm of observations are likely to contain either clouds of varying optical density (from relatively dense to aerosol-like opacities), follow varying path lengths through more substantial clouds, or a mix of aerosol-only and cloud-only observations. The observations can be easily modeled using the main aerosol centroid and an “artificial” cloud centroid with extinction ratio of 1 (i.e. large size) and a large “cloud” 1020-nm extinction coefficient. The model is not sensitive to the 1020-nm extinction coefficient value selected as long as it is greater than the upper limit of the domain of 1020-nm extinction. We have used a value of  $10^{-1} \text{ km}^{-1}$  for the cloud centroid extinction ( $k_c$ ). The model

produces an extinction ratio,  $R$ , for any 1020-nm extinction coefficient,  $k$ , between  $k_a$  and  $k_c$  as a simple mixture of the two centroids or

$$R = \frac{aR_c k_c + (1 - a)R_a k_a}{a k_c + (1 - a) k_a}, \quad (1)$$

$$a = \frac{k - k_a}{k_c - k_a}.$$

The function is shown overlaying the density plot in Fig. 4. As is the case with other seasons and altitudes, the curve does a remarkable job of simulating the observations. The robustness of this fit suggests that these observations are likely to represent mixtures of background aerosol with some cloud-like component. It also suggests that terminologies used on occasion like “optically thin cirrus” are misleading and it may be better to refer to these observations as cloud/aerosol mixtures as originally recognized by Kent et al. (1993, 1998). As discussed above, how the atmosphere and the SAGE II observations construct this mixture is not readily determinable from the data.

### 3 Distinguishing between aerosol and clouds in SAGE II observations

The focus of this paper is on aerosol in the UTLS. To facilitate this study, we were required to identify (for the purposes of removal) measurements that exhibit cloud-like properties. Our original intent was to employ the method pioneered by Kent et al. (1993) which is included in operational SAGE II data product. While we have found it to be reasonably effective, based on past experiences, we felt that at least some cloud-like observations were missed by this algorithm. As a result, we have explored a fusion of the Kent method with a method based on the polar stratospheric cloud discrimination scheme developed by Pitts et al. (2009) for use with the Cloud-Aerosol Lidar and Infrared Pathfinder Satellite Observation (CALIPSO) data set.

## SAGE II cloud/aerosol categorization and observations

L. W. Thomason and  
J.-P. Vernier

Title Page

Abstract

Introduction

Conclusions

References

Tables

Figures

⏪

⏩

◀

▶

Back

Close

Full Screen / Esc

Printer-friendly Version

Interactive Discussion



### 3.1 The Kent method

The cloud/aerosol discrimination method developed by Kent et al. (1993) (called the Kent method below) is based on the observed SAGE II 525 and 1020-nm aerosol extinction coefficient distribution. These authors also recognized that many “thin” clouds were in fact cloud/aerosol mixtures and that the transition from pure aerosol measurements to cloud/aerosol mixtures is a continuum rather than a discrete step. The method is predicated on the assumption that cloud/aerosol mixtures have an extinction ratio approaching 1 (large particle size) whereas aerosol typically has an extinction between 2 and 5. The dividing line between the two types is expressed as a simple linear equation in the form

$$k_{525} = m(k - k_i),$$

where  $m$  is slope of the line that divides aerosol and cloud/aerosol mixtures in 525 vs. 1020-nm aerosol extinction coefficient space and  $k_i$  is the intercept of this line on the 1020-nm extinction coefficient axis. While a detailed discussion of the Kent method is beyond the scope of this paper, the source of the values derived for the parameters is relatively easy to understand. The parameter  $m$  is roughly the 525 to 1020-nm extinction coefficient ratio that is most characteristic of the primary aerosol centroid. For the distribution shown in Fig. 4, the equivalent value of  $m$  would be  $\sim 4.5$ . The value for  $k_i$ , along with the slope helps to define the positive (high extinction) edge of the main aerosol centroid.

Values of  $m$  and  $k_i$  are computed in as a function of altitude and latitude as a function season and year. These coefficients have not been formally archived but they are available from the authors of this paper. The Kent method is used in the SAGE II version 6.2 data set as one of the data quality flags. In the variable space used in Fig. 4, the Kent method is expressed as

$$R = m - \frac{mk_i}{k}$$

## SAGE II cloud/aerosol categorization and observations

L. W. Thomason and  
J.-P. Vernier

Title Page

Abstract

Introduction

Conclusions

References

Tables

Figures



Back

Close

Full Screen / Esc

Printer-friendly Version

Interactive Discussion



Figure 4 shows an example of the division between aerosol and cloud/aerosol mixtures based on the Kent method (dotted line). Since this plot includes data from multiple years and latitudes, the curve (for DJF 2002) is not completely matched with the data plot. However, the results for the Kent method fit do not change significantly with latitude in this period and this curve is typical of those found between 1999 and 2005. Generally, it shows that the Kent method is doing a good job separating aerosol from cloud/aerosol mixtures though it seems likely that some aerosol/cloud mixtures remain in the aerosol category in the region where extinction is near  $2 \times 10^{-4} \text{ km}^{-1}$  and the extinction ratio is near 2. Geographically, we find that many of these transitional cloud/aerosol mixtures to occur, not surprisingly, in the tropics. This matches past experiences where efforts to remove cloud impacts from the aerosol data left enough mixtures in the data set that it was better to use median statistics (with mixed results) than averaging in order to minimize cloud impacts (e.g. Thomason et al., 1997a). This effect is one of the primary motivations for producing a modified form of the Kent method for this analysis.

### 3.2 The new method

The modifications to the Kent method involve using a space change from 525 vs. 1020-nm aerosol extinction space to the extinction ratio vs. 1020-nm aerosol extinction space that is analogous to the polar stratospheric cloud identification scheme developed by Pitts et al. (2008, 2009). In their approach, aerosol depolarization ratio and backscatter ratio are used with some straightforward statistical modeling to separate aerosol from polar stratospheric clouds of various compositions. Following their approach, we first distinguish between the primary aerosol centroid and enhanced extinction using a probably density function of aerosol extinction excluding measurements where the 525 to 1020-nm aerosol extinction coefficient ratio is less than 2. An example of this distribution is shown in Fig. 5. The boundary between the aerosol primary aerosol and enhanced aerosol,  $k_o$ , is defined  $k_a + 3\Delta k_a$  where  $\Delta k_a$  is the median absolute deviation of aerosol extinction coefficient with extinction ratio greater than 2 from  $k_a$ . We find that the factor of 3 is reasonably robust for above 12 km but should be decreased below

## SAGE II cloud/aerosol categorization and observations

L. W. Thomason and  
J.-P. Vernier

Title Page

Abstract

Introduction

Conclusions

References

Tables

Figures



Back

Close

Full Screen / Esc

Printer-friendly Version

Interactive Discussion



12 km to values as small as 1.5. The factor of 3 was selected based on an evaluation of where the cloud “tail” originated and, as such, is empirical though we are generally pleased with the overall results. Nonetheless, the details of separating cloud and aerosol is steadfastly subjective. Within the UTLS and stratosphere, the distribution is generally quite narrow and more than 95 % of points with extinction ratios greater than 2 lie below  $k_o$ . As will be shown below, this fraction  $k$  decreases at lower altitudes where higher extinction but still optically small particles (extinction ratio greater than 2) are more common. The area greater than  $k_o$  is subdivided using Eq. (1) except where the ratio,  $R$ , is offset from the aerosol centroid and notional cloud path by an empirically selected value  $\delta$  or

$$R = \frac{aR_c k_c + (1 - a)R_a k_a}{a k_c + (1 - a)k_a} + \delta, \text{ where} \quad (2)$$

$$a = \frac{k - k_a}{k_c - k_a}.$$

Generally, we find that values for  $\delta$  between 0.2 and 0.5 are adequate to delineate between the upper limit of cloud/aerosol mixtures and the resulting aerosol analyses are not sensitive to the value chosen (though some inferences of cloud properties and occurrence can be significantly affected). In practice, we use a fixed value of 0.4. Observations with extinction coefficient greater than  $k_o$  and extinction ratio greater than  $R$  are designated as “enhanced aerosol” and most commonly occur below 10 km and at high northern latitudes in Spring and Summer. No matter how large the extinction these point exhibit, we do not believe that measurements lying within the enhanced aerosol area are compatible with cloud observations and their observed morphology (when and where they occur) is also consistent with being aerosol. Observations with extinction coefficient greater than  $k_o$  but with extinction ratio less than  $R$  are considered cloud/aerosol mixtures and for the purposes of the analysis below are excluded from further analysis. These boundaries are shown in Fig. 6. Note that there is a wedged shaped region in this figure (denoted by the letter W) where classification of observa-

**SAGE II cloud/aerosol categorization and observations**

L. W. Thomason and J.-P. Vernier

Title Page

Abstract

Introduction

Conclusions

References

Tables

Figures

⏪

⏩

◀

▶

Back

Close

Full Screen / Esc

Printer-friendly Version

Interactive Discussion



Discussion Paper | Discussion Paper | Discussion Paper | Discussion Paper | Discussion Paper

tions is problematic. In practice, we count these as cloud/aerosol mixtures and exclude them from aerosol analyses since they have little impact on the products shown below. On the other hand, other statistics such as cloud frequency, particularly at altitudes above 15 km, is strongly impacted by whether we consider these events to be cloud observations. We know of no practical way to make this judgment. Given the dependence on having both 525 and 1020-nm extinction coefficients, this analysis can only be carried out down to altitudes of 5 km (the last altitude at which 525-nm extinction coefficient is routinely reported); however the quality of this measurement is suspect at 5 km and practically the analysis can be carried out no lower than 6 km and 7 km would be a more circumspect cutoff altitude.

In practice we find that the new method yields results similar to the Kent method above 15 km and away from the tropics. However, within the tropics and at lower altitudes, it is clear (and can easily be surmised from Fig. 6) that some measurements that should be classified as cloud/aerosol mixtures are erroneously being classified as aerosol. In addition, we find that enhanced aerosol, when it occurs, is often misclassified as cloud/aerosol mixture by the Kent method. In general, we find that the new approach is less likely to confuse aerosol and cloud/aerosol measurements particularly in the clean period for the late 1990s through the end of the observations in 2005. It is not clear that either method works particularly well (or is it possible for them to do so) in the heavily volcanic period in the early 1990s where the extinction ratio for aerosol is close to 1. Figure 7 shows an example of the analyses that result from the implementation of the new cloud/aerosol identification method. In this figure, we show the 1999 to 2005 median 1020-nm aerosol extinction ratio (relative to molecular) at 9 km. The most noteworthy feature is the high values noted in MAM and JJA at high northern latitudes. Most of the aerosol observations comprising this feature are located in the enhanced aerosol category and are clearly not cloud related. The high latitude band of aerosol is probably a combination of human-derived aerosol (e.g. Arctic haze) and continental aerosol lofted by convection and other dynamic processes to the observed altitudes. In general we find this layer observable as high as 12 km but it disappears

**SAGE II cloud/aerosol categorization and observations**L. W. Thomason and  
J.-P. Vernier

Title Page

Abstract

Introduction

Conclusions

References

Tables

Figures



Back

Close

Full Screen / Esc

Printer-friendly Version

Interactive Discussion



rapidly above that altitude. The maximum over Eastern Asia is likely to be associated with either Asian desert dust or forest fires that occur frequently in this region.

It is theoretically possible to continue analysis with only 1020-nm extinction coefficient; for instance, by using  $k_o$  as the sole discriminator between aerosol and cloud.

5 We find that it is inevitable that enhanced aerosol will be counted as cloud with the potential for substantially confusing any analysis of aerosol and/or cloud properties. For this reason, we find the use of a single wavelength method at any altitude to be of questionable value.

#### 4 Observations of the Asian Tropopause Aerosol Layer

10 While highly variable in intensity from year to year, CALIPSO observations have consistently shown the presence of an aerosol enhancement within the Asian Monsoon anticyclone. This layer appears as early as May and persists as late as September but is primarily a JJA phenomenon and is correlated with the Asian Monsoon anticyclone (Vernier et al., 2011a) and is also well correlated with enhancements of CO and HNO<sub>3</sub> as reported by Randel et al. (2010). The spatial extent was observed to lie between 14 and 18 km and between roughly 15 and 35° N and 0 and 150° E. While SAGE II observations extend for over 20 yr, no previous analysis of SAGE II over Southern Asia has suggested the presence of the ATAL aerosol. Part of the reason for this is due to the mixing of purely aerosol observations with cloud/aerosol mixture observations which effectively added a non-aerosol enhancement to aerosol extinction coefficient depic-  
15 tions throughout the ATAL altitude region and effectively masked its presence. The development of the new cloud/aerosol discrimination method has greatly reduced this problem. The second issue is that particularly after 2000, the density of observations by SAGE II over the Western Pacific region (as well as over Africa and South America) are so sparse as to make detailed analyses extremely challenging. The analyses of  
20 CALIPSO data shown in Vernier et al. (2011a) are made in 16-day, 1° latitude × 2° longitude × 200 m resolution. While this yields a somewhat noisy analysis, the presence of

### SAGE II cloud/aerosol categorization and observations

L. W. Thomason and  
J.-P. Vernier

Title Page

Abstract

Introduction

Conclusions

References

Tables

Figures

⏪

⏩

◀

▶

Back

Close

Full Screen / Esc

Printer-friendly Version

Interactive Discussion





the ATAL feature is clearly visible in July–August observations throughout the CALIPSO mission (2006–present). Unfortunately, SAGE II simply does not make sufficient measurements to approach this resolution in any meaningful way. Instead the following analyses are based on seasonal statistics (by months) with a spatial resolution of  $10^\circ$  latitude  $\times$   $24^\circ$  longitude  $\times$  0.5 km. We use medians to select the value reported in each bin. In individual years, mean and median statistics are very similar. In the multiyear analysis, some episodic events, particularly in 2003, have a large impact on the analysis and the median analysis is generally more representation of the period as a whole. For single year analyses prior to 2000, depending on the specific year and season, the analysis resolution puts between 20 and 60 points into each bin with some high latitude bins completely without data (i.e. the winter hemisphere). While it is possible for the bin values to be controlled by outliers, by-hand inspection of many grid boxes, particularly of the ATAL feature, indicate that the final analyses are representative. For individual years after 1999, the analyses have a number of unpopulated or minimally populated bins in the subtropics making detailed analyses of ATAL considerably more difficult.

Figure 8 shows the 1020-nm aerosol-molecular extinction ratio (1020-nm aerosol extinction coefficient divided by molecular extinction coefficient plus 1) is shown for 16 km at the grid resolution shown above for DJF (December-January-February), MAM (March-April-May), JJA (June-July-August) and SON (September-October-November) for the combined 7 yr between 1999 and 2005. In these plots, we found a general increase toward higher latitudes generally associated with crossing from the stratosphere at low latitudes to the troposphere at high latitudes. In addition, the influence of polar stratospheric clouds has some influence in the winter/spring hemisphere particularly in the Southern Hemisphere. Most PSC types (saturation ternary solution (STS) and Nitric Acid Trihydride/STS mixtures) are generally identified as “aerosol” by the aerosol/cloud separation method whereas ice PSCs are generally identified as clouds in most circumstances. At low latitudes, we observe an enhancement of aerosol near the equator that is spatially associated with Africa and to a lesser extent South America. This feature is strongest in September-October-November (SON) when biomass

**SAGE II cloud/aerosol categorization and observations**L. W. Thomason and  
J.-P. Vernier[Title Page](#)[Abstract](#)[Introduction](#)[Conclusions](#)[References](#)[Tables](#)[Figures](#)[Back](#)[Close](#)[Full Screen / Esc](#)[Printer-friendly Version](#)[Interactive Discussion](#)

burning is most intense in equatorial Africa (Roberts et al., 2009). In all seasons, except JJA, the subtropics and mid latitudes are found to be at low aerosol-molecular extinction coefficient ratio values. In JJA, however, we observe the largest the extinction coefficient values, outside of regions affected by PSC presence, over Southern Asia particularly India and Mainland Southeast Asia. In this area, aerosol extinction coefficient increases from between 1.5 and 1.75 during the other 3 seasons to over 2 or a 50 to 100 % increase in the aerosol component. The magnitude of the increase and geographic scope of this feature is extremely compatible with the ATAL feature found in the CALIPSO analysis by Vernier et al. (2011a) but extends further east ( $\sim 180^\circ$  E) than the layer found by CALIPSO analysis ( $\sim 150^\circ$  E). The expanded eastward extent may be partly related to the reduced horizontal resolution (relative to CALIPSO) of the SAGE II analysis.

Figure 9 shows the seasonal vertical cross section of aerosol-molecular extinction ratio for JJA for latitudes between  $15$  and  $45^\circ$  N as a function of longitude and altitude for the 7 yr from 1999 through 2005. During the non-NH summer months, we observe little evidence of a discrete aerosol layer between 14 and 18 km (ATAL altitudes) for any longitude or altitude though there is a weak enhancement in the Eastern hemisphere in MAM and SON which may reflect the May-to-September lifetime of ATAL found by Vernier et al. (2011a). Generally, the aerosol-molecular extinction coefficient ratio mostly increases monotonically upward from 12 km across the tropopause and into the stratosphere where the highest ratios are observed. In this analysis, episodic minor volcanic events do not have a substantial effect except in the SON analysis around 20 km which reflects an influence by the September 2002 Ruang eruption. On the other hand, we observe a significant aerosol enhancement in the JJA analysis in the same altitude range as ATAL is observed by CALIPSO beginning in 2006. The layer extends from about  $0$  to  $160^\circ$  E and is centered between 14 and 18 km and thus has a similar spatial extent as that observed by CALIPSO. The entire latitude band shows enhanced aerosol relative to the other seasons and there is a suggestion of an ATAL-like feature near  $90^\circ$  W that could be associated with the North American Monsoon but it is

**SAGE II cloud/aerosol categorization and observations**L. W. Thomason and  
J.-P. Vernier

Title Page

Abstract

Introduction

Conclusions

References

Tables

Figures



Back

Close

Full Screen / Esc

Printer-friendly Version

Interactive Discussion



much weaker and of significantly smaller extent. Overall, we find that the 1999–2005 analysis supports the presence of the ATAL in this period.

Vernier et al. (2011c) found that the ATAL layer was highly variable from year to year even beyond the effect of volcanic activity. Similar analyses by SAGE II are difficult and potentially noisy but the potential to extend the ATAL record as far back as the 1980s is desirable. Unfortunately we find that the stratospheric loading and its subsequent impact on the upper troposphere effectively eliminates a number of years due to high in situ levels in the UTLS that overwhelm ATAL levels observed in the 2000s. As a result, we are only able to produce useful depictions for a few years in the late 1980s and then 1996 through until the reduction to a 50% data rate. SAGE II operations were terminated in August 2005 and very little low latitude data is available for that JJA period. Figure 10 shows the single year analyses for JJA for 1989, 1997, 1998 and 1999 (the last year in which SAGE II operated using a complete duty cycle during JJA). We observe that both 1989 and 1997 do not show any evidence of an aerosol enhancement at ATAL longitudes and, in fact, tend to support the 14 to 18 km region as a minimum in aerosol loading. Analyses for 1990 and 1996, not shown, also do not suggest the presence of the ATAL layer. In fact, the entire 14 to 18 km region in the multiyear analysis (Fig. 9c) contains considerably more aerosol than any of the 4 yr shown in Fig. 10. The years 1998 and 1999 do show some enhancement in the areas over Asia. In 1999, there is a distinct layer near 18 km, the aerosol seems to be associated with recent volcanic activity or other episodic events (e.g., eruption of Mayon, Philippines, June 1999) and persists into 2000 that is unlike the short lifetime of the ATAL-related aerosol. This event may be the source of aerosol reported by Tobo et al. (2007) and Kim et al. (2003). Similarly, the feature in 1998 at 17 km and near 90° E is also the product of an episodic event (possibly material from eruptions by Soufriere Hills or Colima) as it continued to intensify into SON before dissipating by DJF again unlike the characteristic ATAL behavior. There may be some hints of an ATAL feature in 1999 between 14 and 17 km near 100° E but it is not very compelling.

**SAGE II cloud/aerosol categorization and observations**

L. W. Thomason and  
J.-P. Vernier

Title Page

Abstract

Introduction

Conclusions

References

Tables

Figures



Back

Close

Full Screen / Esc

Printer-friendly Version

Interactive Discussion



**SAGE II cloud/aerosol categorization and observations**L. W. Thomason and  
J.-P. Vernier[Title Page](#)[Abstract](#)[Introduction](#)[Conclusions](#)[References](#)[Tables](#)[Figures](#)[⏪](#)[⏩](#)[◀](#)[▶](#)[Back](#)[Close](#)[Full Screen / Esc](#)[Printer-friendly Version](#)[Interactive Discussion](#)

While for individual years 2000 and later easily interpretable plots like those in Fig. 10 are difficult to produce, it is possible to infer the presence of ATAL using extinction coefficient frequency density functions similar to the backscatter ratio frequency density plots used in Vernier et al. (2011a). In that paper, the authors found that the backscatter ratio density function within the main ATAL region increased by about a factor of two between DJF and JJA without an appreciable change in the shape of the distribution in 2006 through 2008. The outlier in that analysis was heavily volcanic year 2009 which showed the largest increase and a significant perturbation to the shape of the density function. In Fig. 11, we show the density functions of 1020-nm aerosol extinction within the ATAL region and a scatter plot of 1020-nm extinction coefficient versus the 525 to 1020-nm aerosol coefficient ratio for a selection of years between 1989 and 2005 focusing mostly on the late 1990s through the end of the SAGE II record. In this case, we follow the analysis by Vernier et al. (2011a) and use all SAGE II observations between 5 and 105° E, 15 and 45° N, and 15 to 17 km. In each plot we show both the MAM and JJA analyses. One concern with the analysis would be that clouds are still slipping by the analysis and artificially creating an aerosol feature. The scatter plots clearly demonstrate that this is not the case. While the aerosol points are essentially the same between seasons in 1989, 1990, and 1997, there is a clear shift in the position of the core aerosol in the plots for 1999 through 2005. While there are obviously many more cloud events in JJA than MAM, the primary shift in extinction coefficient occurs for aerosol extinction ratios above 2 which are almost certainly aerosol. The density functions show an increase from MAM to DJF in extinction coefficient between 1999 and 2005. Some of these years show increases on par with those found (for backscatter ratio) in the CALIPSO analysis ( $\sim 2$ ) but a few show much larger increases. Similar to 1999, it seems likely that at least 2003 is the result of an episodic event though we cannot identify its source though it is short-lived similar to the ATAL feature. It is worth noting that prior to 1999, the extinction coefficient between MAM and JJA was never observed to increase within the ATAL zone. Some of this is due to the long recovery from Pinatubo particularly immediately after the eruption; however nothing in the

SAGE II data set suggests an ATAL feature before 1999. Unlike from 1997 and earlier, extinction density distributions starting in 1999 are always shifted toward larger extinction values with the exception of 2005 wherein August data is missing. Some of these functions have multiple peaks; the reason for this change in shape is not clear and it is unlike the behavior exhibited in the CALIPSO analyses. Overall, we observe behavior in the SAGE II data that is very similar to CALIPSO ATAL observations in 1999, 2000 and 2002. The behavior is similar to CALIPSO, except a change in shape, in 2001 and 2004. The SAGE II analysis does not observe an ATAL-like aerosol enhancement in 2005 (when August data is unavailable) nor in 2003 JJA where the enhancement is much larger than any SAGE II or CALIPSO ATAL enhancement. Based on this analysis, we conclude that SAGE II suggests that the ATAL aerosol feature did not exist prior to the late 1990s but that there is sufficient evidence from the SAGE II data to indicate its presence from 1999 onwards.

## 5 Conclusions

An improved method for identifying SAGE II observation in the upper troposphere influenced by the presence of clouds has been developed. The new method significantly reduced the influence of clouds on the inference of aerosol properties in the UTLS. We have applied this new method to analyses of aerosol in the Northern Hemisphere subtropics where observations by CALIPSO have revealed enhanced aerosol associated with Asian Monsoon. This enhancement, called the Asian Tropopause Aerosol Layer or ATAL, appears in every year of the CALIPSO lifetime and is clearly present in the 1999–2005 SAGE II analysis. Individual year analysis shows no indication of the ATAL layer in the SAGE II data prior to 1998. During the 1999 through period, the SAGE II analysis is generally consistent with the existence of an ATAL-like feature. Based on this analysis, we conclude that ATAL is a relatively recent phenomenon (1999 and later). If it is a relatively recent phenomenon, it is likely that the ATAL aerosol is of human origin.

### SAGE II cloud/aerosol categorization and observations

L. W. Thomason and  
J.-P. Vernier

Title Page

Abstract

Introduction

Conclusions

References

Tables

Figures



Back

Close

Full Screen / Esc

Printer-friendly Version

Interactive Discussion



## References

- Kent, G. S., Winker, D. M., Osborn, M. T., McCormick, M. P., and Skeens, K. M.: A model for the separation of cloud and aerosol in SAGE II occultation data, *J. Geophys. Res.*, 98, 20725–20735, 1993.
- 5 Kent, G. S., Winker, D. M., Vaughan, M. A., Wang, P.-H., and Skeen, K. M.: Simulation of stratospheric aerosol and gas experiment (SAGE) II cloud measurements using airborne lidar data, *J. Geophys. Res.*, 102, 21795–21807, 1997.
- Kent, G. S., Trepte, C. R., and Lucker, P. L.: Long-term stratospheric aerosol and gas experiment I and II measurements of upper tropospheric aerosol extinction, *J. Geophys. Res.*, 103, 28863–28874, 1998.
- 10 Kent, G. S., Trepte, C. R., Wang, P.-H., and Lucker, P. L.: Problems in separating aerosol and cloud in the Stratospheric Aerosol and Gas Experiment (SAGE) II data set under conditions of lofted dust: application to the Asian deserts, *J. Geophys. Res.*, 108, 4410, doi:10.1029/2002JD002412, 2003.
- 15 Kim, Y. S., Shibata, T., Iwasaka, Y., Shi, G., Zhou, X., Tamura, K., and Ohashi, T.: Enhancements of aerosols near the cold tropopause in summer over Tibetan Plateau: lidar and balloon borne measurements in 1999 at Lhasa, Tibet, China, *Proc. SPIE*, 4893, 496–503, doi:10.1117/12.466090, 2003.
- Pitts, M. C., Poole, L. R., and Thomason, L. W.: CALIPSO polar stratospheric cloud observations: second-generation detection algorithm and composition discrimination, *Atmos. Chem. Phys.*, 9, 7577–7589, doi:10.5194/acp-9-7577-2009, 2009.
- 20 Randel, W. J., Park, M., Emmons, L., Kinnison, D., Bernath, P., Walker, K. A., Boone, C., and Pumphrey, H.: Asian monsoon transport of pollution to the stratosphere, *Science*, 328, 611–613, doi:10.1126/science.1182274, 2010.
- 25 SPAR, C. 2006, Assessment of Stratospheric Aerosol Properties (ASAP), SPARC Report No. 4, WCRP-124, WMO/TD-No. 1295, edited by: Thomason, L. and Peter, Th., 2006.
- Thomason, L. W., Kent, G. S., Trepte, C. R., and Poole, L. R.: A comparison of the stratospheric aerosol background periods of 1979 and 1989–1991, *J. Geophys. Res.* 102. 3611–3616, 1997.
- 30 Thomason, L. W., Poole, L. R., and Deshler, T. R.: A global climatology of stratospheric aerosol surface area density as deduced from SAGE II: 1984–1994, *J. Geophys. Res.*, 102, 8967–8976, 1997.

### SAGE II cloud/aerosol categorization and observations

L. W. Thomason and  
J.-P. Vernier

Title Page

Abstract

Introduction

Conclusions

References

Tables

Figures

⏪

⏩

◀

▶

Back

Close

Full Screen / Esc

Printer-friendly Version

Interactive Discussion



## SAGE II cloud/aerosol categorization and observations

L. W. Thomason and  
J.-P. Vernier

Title Page

Abstract

Introduction

Conclusions

References

Tables

Figures

⏪

⏩

◀

▶

Back

Close

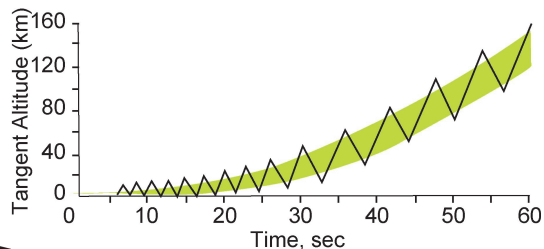
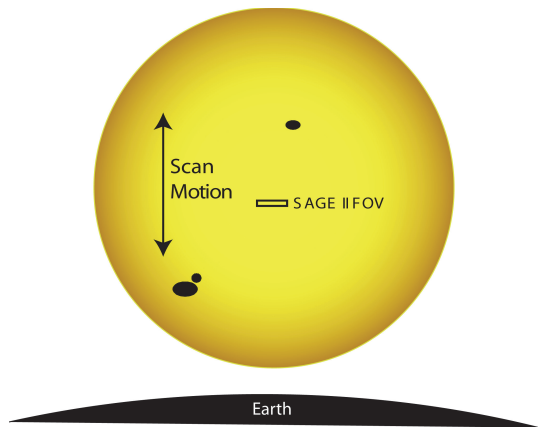
Full Screen / Esc

Printer-friendly Version

Interactive Discussion



- Thomason, L. W., Herber, A. B., Yamanouchi, T., and Sato, K.: Arctic study on tropospheric aerosol and radiation: comparison of tropospheric aerosol extinction profiles measured by airborne photometer and SAGE II, *Geophys. Res. Lett.*, 30, 1328–1331, doi:10.1029/2002GL016453, 2003.
- 5 Thomason, L. W., Poole, L. R., and Randall, C. E.: SAGE III aerosol extinction validation in the Arctic winter: comparisons with SAGE II and POAM III, *Atmos. Chem. Phys.*, 7, 1423–1433, doi:10.5194/acp-7-1423-2007, 2007.
- Thomason, L. W., Burton, S. P., Luo, B.-P., and Peter, T.: SAGE II measurements of stratospheric aerosol properties at non-volcanic levels, *Atmos. Chem. Phys.*, 8, 983–995, doi:10.5194/acp-8-983-2008, 2008.
- 10 Tobo, Y., Iwasaka, Y., Shi, G.-Y., Kim, Y.-S., Ohashi, T., Tamura, K. and Zhang, D.: Balloonborne observations of high aerosol concentrations near the summertime tropopause over the Tibetan Plateau, *Atmos. Res.*, 84, 233–241, doi:10.1016/j.atmosres.2006.08.003, 2007.
- Vernier, J.-P., Thomason, L. W., and Kar, J.: CALIPSO detection of an Asian tropopause aerosol layer, *Geophys. Res. Lett.*, 38, L07804, doi:10.1029/2010GL046614, 2011a.
- 15 Vernier, J. P., Thomason, L. W., Pommereau, J. P., Bourassa, A., Pelon, J., Garnier, A., Hauchecorne, A., Blanot, L., Trepte, C., Doug Degenstein, D., and Vargas, F.: Volcanic origin of the recent stratospheric aerosol trend, *Geophys. Res. Lett.*, 38, L12807, doi:10.1029/2011GL047563, 2011b.
- 20 Vernier, J.-P., Pommereau, J.-P., Thomason, L. W., Pelon, J., Garnier, A., Deshler, T., Jumelet, J., and Nielsen, J. K.: Overshooting of clean tropospheric air in the tropical lower stratosphere as seen by the CALIPSO lidar, *Atmos. Chem. Phys.*, 11, 9683–9696, doi:10.5194/acp-11-9683-2011, 2011c.
- Wang, P.-H., Minnis, P., Wielicki, B. A., Wong, T., Cess, R. D., Zhang, M., Vann, L. B., and Kent, G. S.: Characteristics of the 1997/1998 El Niño cloud distributions from SAGE II observations, *J. Geophys. Res.*, 108, 4009, doi:10.1029/2002JD002501, 2003.
- 25



**Fig. 1.** A depiction of the SAGE II measurement geometry: SAGE II scans across the center solar disk perpendicular to the Earth's surface (left). The figure on the right shows the pattern of scans for a sunrise event (the location of the Sun is shown in yellow) demonstrating that multiple rays between the instrument and the Sun pass at roughly approximately the same minimum distance from the Earth's surface (the tangent altitude).

**SAGE II cloud/aerosol categorization and observations**

L. W. Thomason and J.-P. Vernier

[Title Page](#)

[Abstract](#) [Introduction](#)

[Conclusions](#) [References](#)

[Tables](#) [Figures](#)

[◀](#) [▶](#)

[◀](#) [▶](#)

[Back](#) [Close](#)

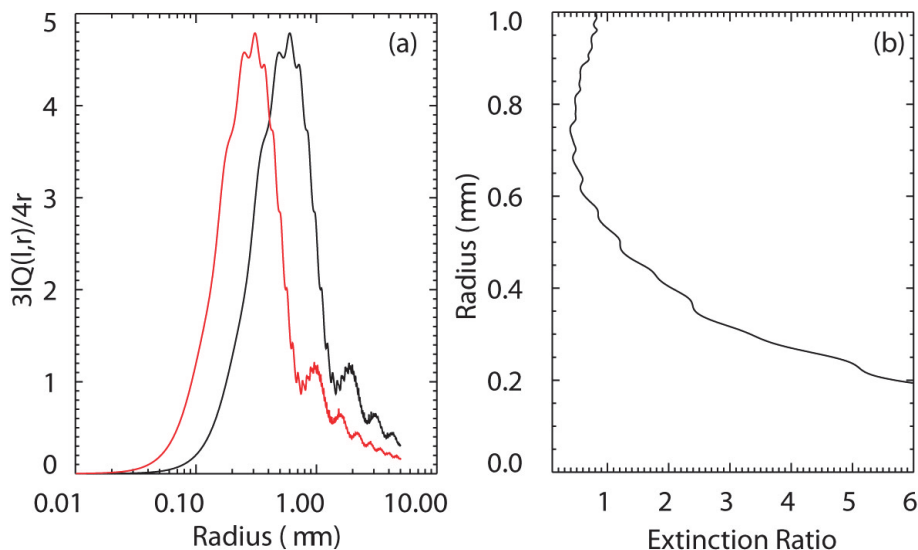
[Full Screen / Esc](#)

[Printer-friendly Version](#)

[Interactive Discussion](#)

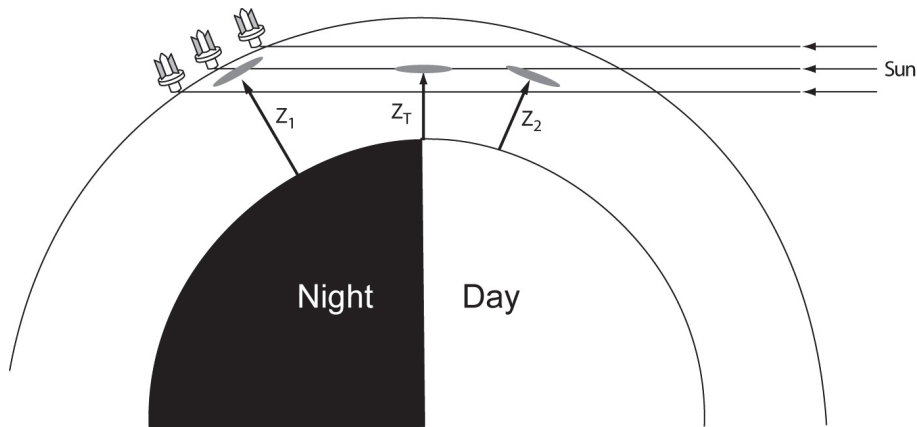




**SAGE II cloud/aerosol categorization and observations**L. W. Thomason and  
J.-P. Vernier

**Fig. 2.** Figure (a) shows the Mie extinction kernels for the 525 and 1020 nm SAGE II aerosol extinction coefficient measurements for sulfate aerosol at stratospheric temperatures. Figure (b) shows the relationship between the ratio of the 525 and 1020 nm extinction kernels and particle radius.

[Title Page](#)[Abstract](#)[Introduction](#)[Conclusions](#)[References](#)[Tables](#)[Figures](#)[◀](#)[▶](#)[◀](#)[▶](#)[Back](#)[Close](#)[Full Screen / Esc](#)[Printer-friendly Version](#)[Interactive Discussion](#)



**Fig. 3.** This figure shows the approximate geometry of the SAGE II observations and demonstrates the different ways in which clouds can manifest themselves the line-of-sight observations. For the center ray in the figure above, clouds at 3 different altitudes ( $Z_1$ ,  $Z_2$ , and  $Z_T$ ) are all observed for a ray at a single tangent altitude,  $Z_T$ .

**SAGE II cloud/aerosol categorization and observations**

L. W. Thomason and J.-P. Vernier

Title Page

Abstract Introduction

Conclusions References

Tables Figures

◀ ▶

◀ ▶

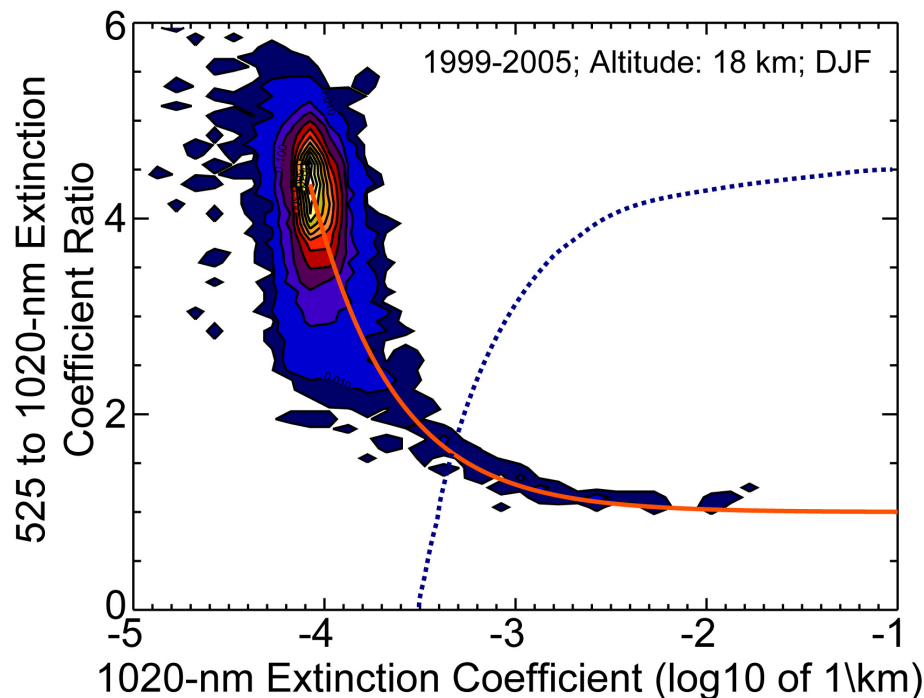
Back Close

Full Screen / Esc

Printer-friendly Version

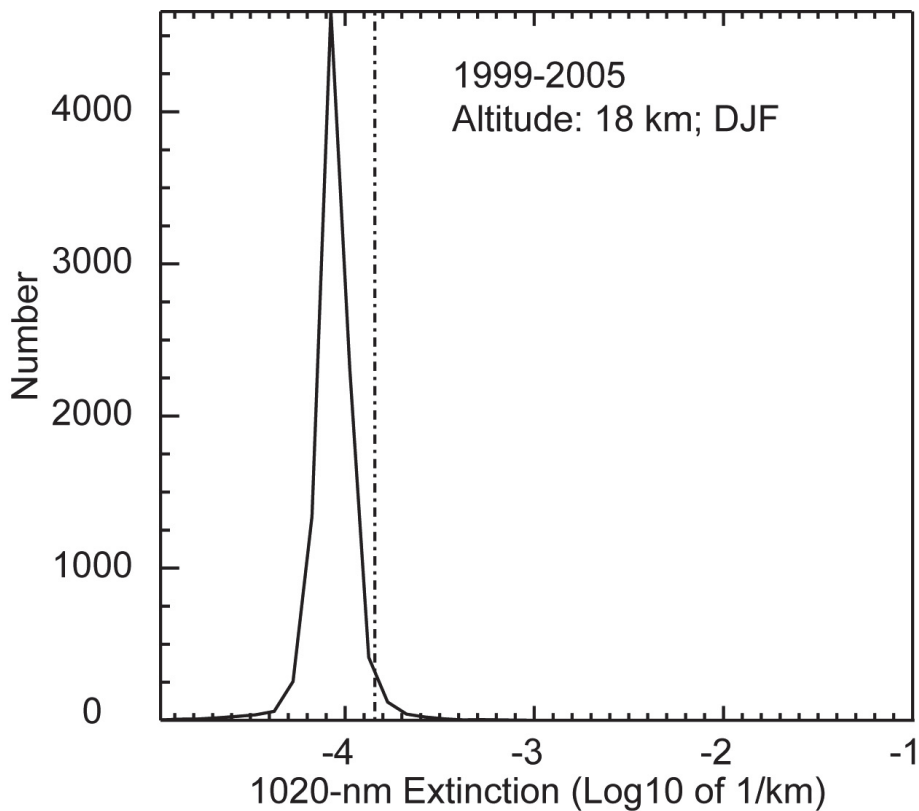
Interactive Discussion



SAGE II cloud/aerosol  
categorization and  
observationsL. W. Thomason and  
J.-P. Vernier

**Fig. 4.** A typical density function for SAGE II aerosol extinction coefficient observations at 18 km in DJF for 1999 through 2005. The density is scaled to a value of 1 at the peak value with contours are at 0.1 increments (0.9, 0.8, etc.) with additional contours at 0.05, 0.01, 0.005 and 0.001. The dotted line shows the approximate position of the “Kent method” cloud aerosol demarcation. The red line (when right of the green line) shows effect of mixing a nominal dense “cloud” with varying fractions of aerosol (values from the centroid of the distribution).

[Title Page](#)[Abstract](#)[Introduction](#)[Conclusions](#)[References](#)[Tables](#)[Figures](#)[◀](#)[▶](#)[◀](#)[▶](#)[Back](#)[Close](#)[Full Screen / Esc](#)[Printer-friendly Version](#)[Interactive Discussion](#)



**Fig. 5.** The density of SAGE II aerosol extinction coefficient measurements at 18 km in DJF for 1999–2005 for 525 to 1020-nm aerosol extinction coefficient ratio greater than 2. The dash-dot line is the location of the separation of primary aerosol from enhanced aerosol and cloud/aerosol mixtures.

**SAGE II cloud/aerosol categorization and observations**

L. W. Thomason and  
J.-P. Vernier

Title Page

Abstract Introduction

Conclusions References

Tables Figures

◀ ▶

◀ ▶

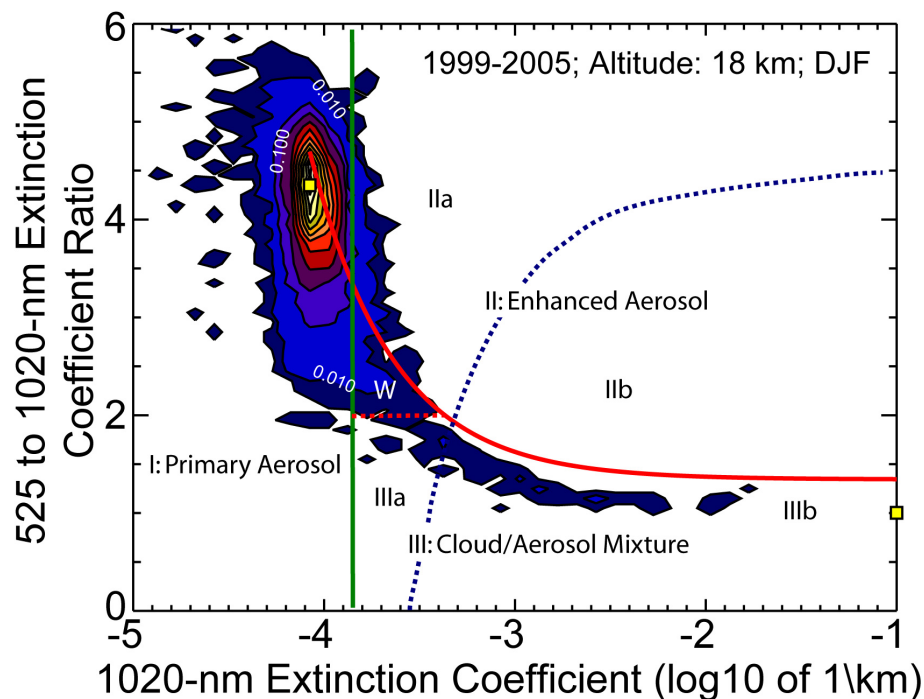
Back Close

Full Screen / Esc

Printer-friendly Version

Interactive Discussion



SAGE II cloud/aerosol  
categorization and  
observationsL. W. Thomason and  
J.-P. Vernier

**Fig. 6.** A typical density function for SAGE II aerosol extinction coefficient observations at 18 km in DJF for 1999 through 2005. The density is scaled to a value of 1 at the peak value with contours are at 0.1 increments (0.9, 0.8, etc.) with additional contours at 0.05, 0.01, 0.005 and 0.001. The dotted line shows the approximate position of the “Kent method” cloud aerosol demarcation. The green line shows the separation of primary aerosol (left) from enhanced aerosol and cloud while the red line (when right of the green line) shows the separation of enhanced aerosol and cloud/aerosol mixtures. The area denoted by a “W” is the wedge region in which the distinction between aerosol and cloud/aerosol mixtures is particularly ambiguous.

Title Page

Abstract

Introduction

Conclusions

References

Tables

Figures

◀

▶

◀

▶

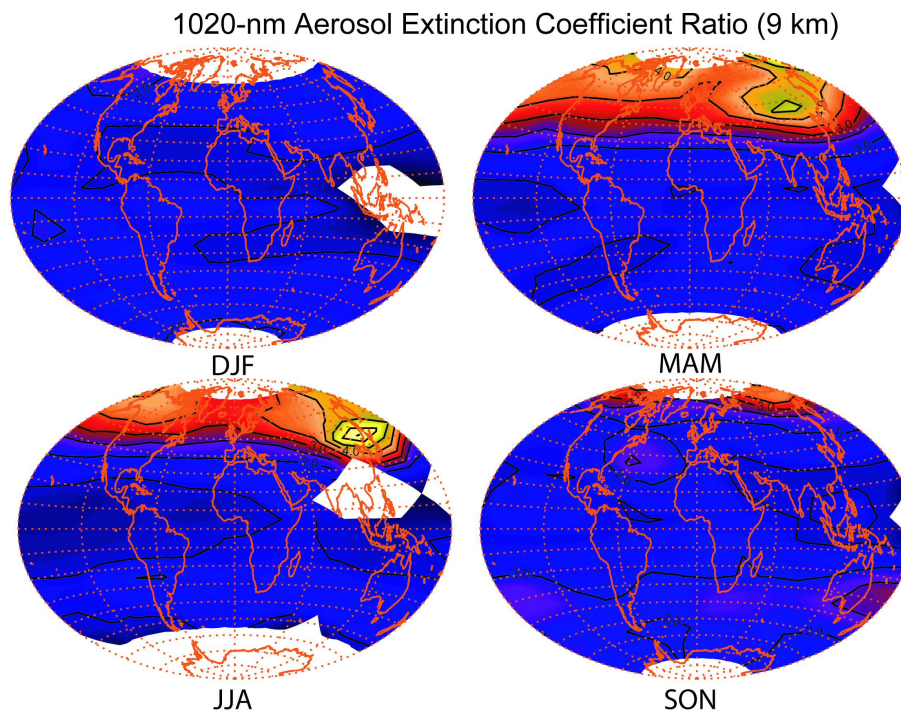
Back

Close

Full Screen / Esc

Printer-friendly Version

Interactive Discussion

**SAGE II cloud/aerosol  
categorization and  
observations**L. W. Thomason and  
J.-P. Vernier

**Fig. 7.** Seasonal depiction of 1020-nm aerosol extinction coefficient ratio (relative to molecular) for 1999–2005 at 9 km. Contour levels are drawn at 0.5 increments from 1.5 to 5.

Title Page

Abstract

Introduction

Conclusions

References

Tables

Figures

◀

▶

◀

▶

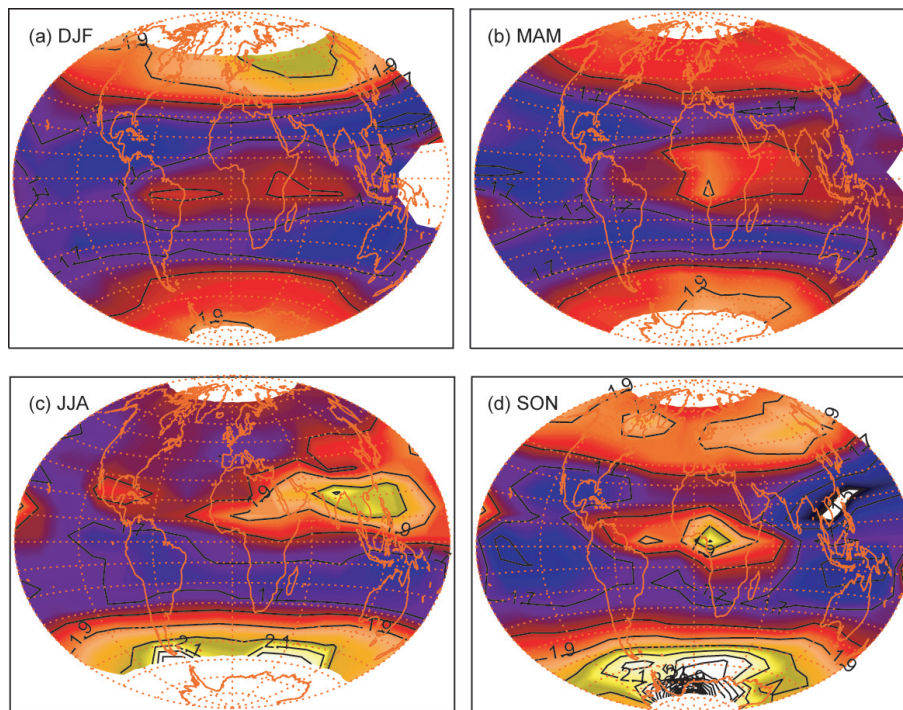
Back

Close

Full Screen / Esc

Printer-friendly Version

Interactive Discussion

**SAGE II cloud/aerosol categorization and observations**L. W. Thomason and  
J.-P. Vernier

**Fig. 8.** Seasonal depiction of 1020-nm aerosol extinction coefficient ratio (relative to molecular) for 1999–2005 at 16 km. Contour levels are drawn at 0.1 increments from 1.5 to 2.2.

Title Page

Abstract

Introduction

Conclusions

References

Tables

Figures

◀

▶

◀

▶

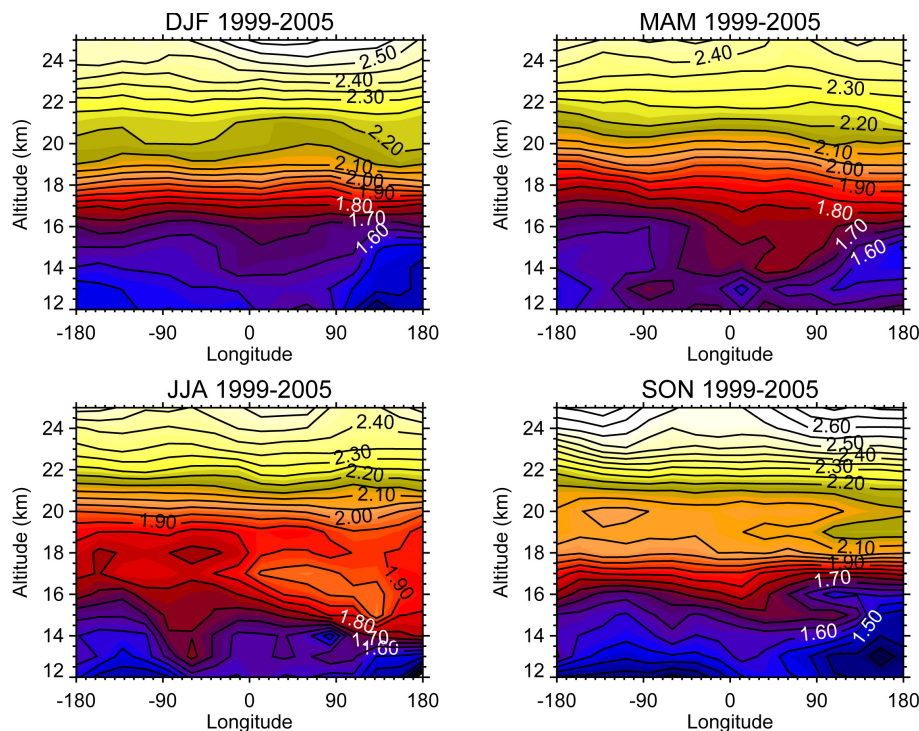
Back

Close

Full Screen / Esc

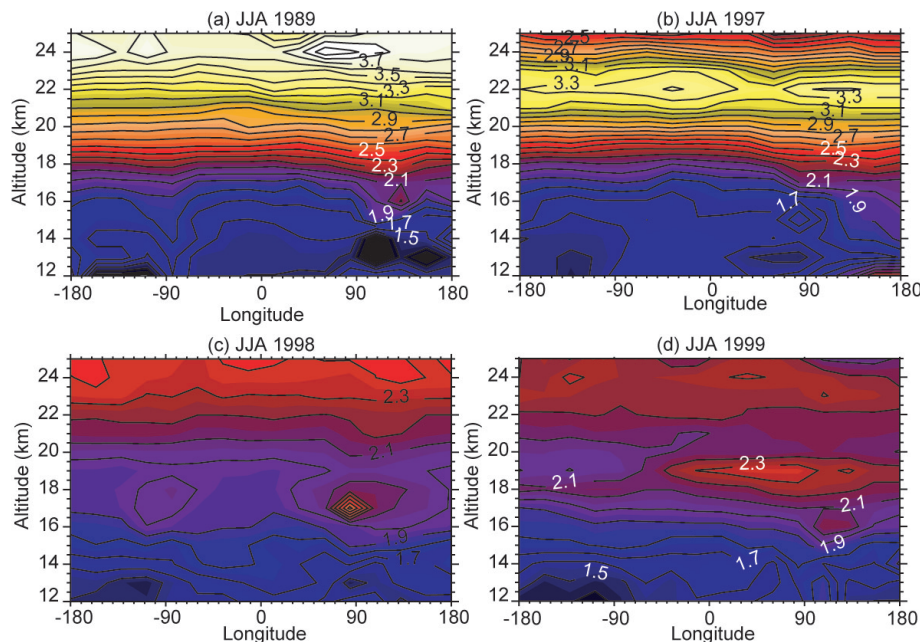
Printer-friendly Version

Interactive Discussion

**SAGE II cloud/aerosol  
categorization and  
observations**L. W. Thomason and  
J.-P. Vernier[Title Page](#)[Abstract](#)[Introduction](#)[Conclusions](#)[References](#)[Tables](#)[Figures](#)[◀](#)[▶](#)[◀](#)[▶](#)[Back](#)[Close](#)[Full Screen / Esc](#)[Printer-friendly Version](#)[Interactive Discussion](#)

**Fig. 9.** Seasonal depictions of median aerosol extinction coefficient ratio (relative to molecular) for SAGE II observations between 1999 and 2005 between 15 and 45° N. Contours are drawn every 0.05 from 1.4 to 3.0.



**SAGE II cloud/aerosol  
categorization and  
observations**L. W. Thomason and  
J.-P. Vernier

**Fig. 10.** JJA depictions of median aerosol extinction coefficient ratio (relative to molecular) for SAGE II observations between 15 and 45° N for individual years: 1989 (a), 1997 (b), 1998 (c), and 1999 (d). Contours are drawn every 0.1 from 1.4 to 4.0.

Title Page

Abstract

Introduction

Conclusions

References

Tables

Figures

◀

▶

◀

▶

Back

Close

Full Screen / Esc

Printer-friendly Version

Interactive Discussion

## SAGE II cloud/aerosol categorization and observations

L. W. Thomason and  
J.-P. Vernier

Title Page

Abstract

Introduction

Conclusions

References

Tables

Figures

◀

▶

◀

▶

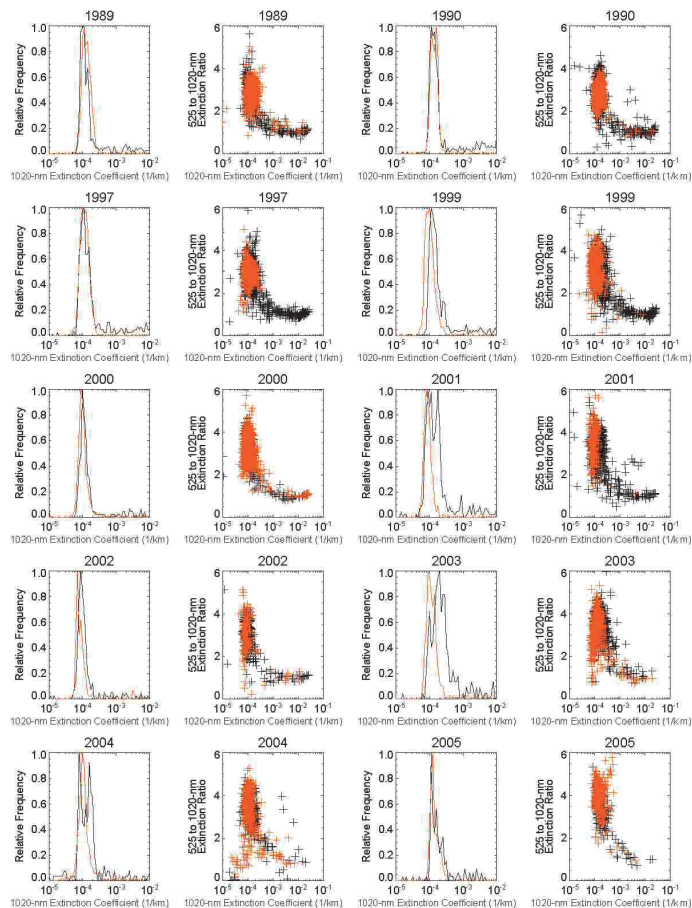
Back

Close

Full Screen / Esc

Printer-friendly Version

Interactive Discussion



**Fig. 11.** Aerosol extinction coefficient density and 525-to-1020 nm aerosol extinction coefficient scatter plots for selected years between 1989 and 2005. Data from MAM is shown in red while data for JJA is shown in black.