

RE-EVALUATION OF THE LIFETIMES OF THE MAJOR CFCS AND CH_3CCL_3 USING ATMOSPHERIC TRENDS

MODEL-MEASUREMENT INTER-COMPARISON

M. RIGBY ET AL.

Here we compare model-generated ‘optimized’ mole fractions with AGAGE and NOAA measurements. Figure 1 shows the residual between the optimized model and AGAGE mole fractions, and Figure 2 shows the comparison for NOAA measurements. The figures show no significant trend in the residuals.

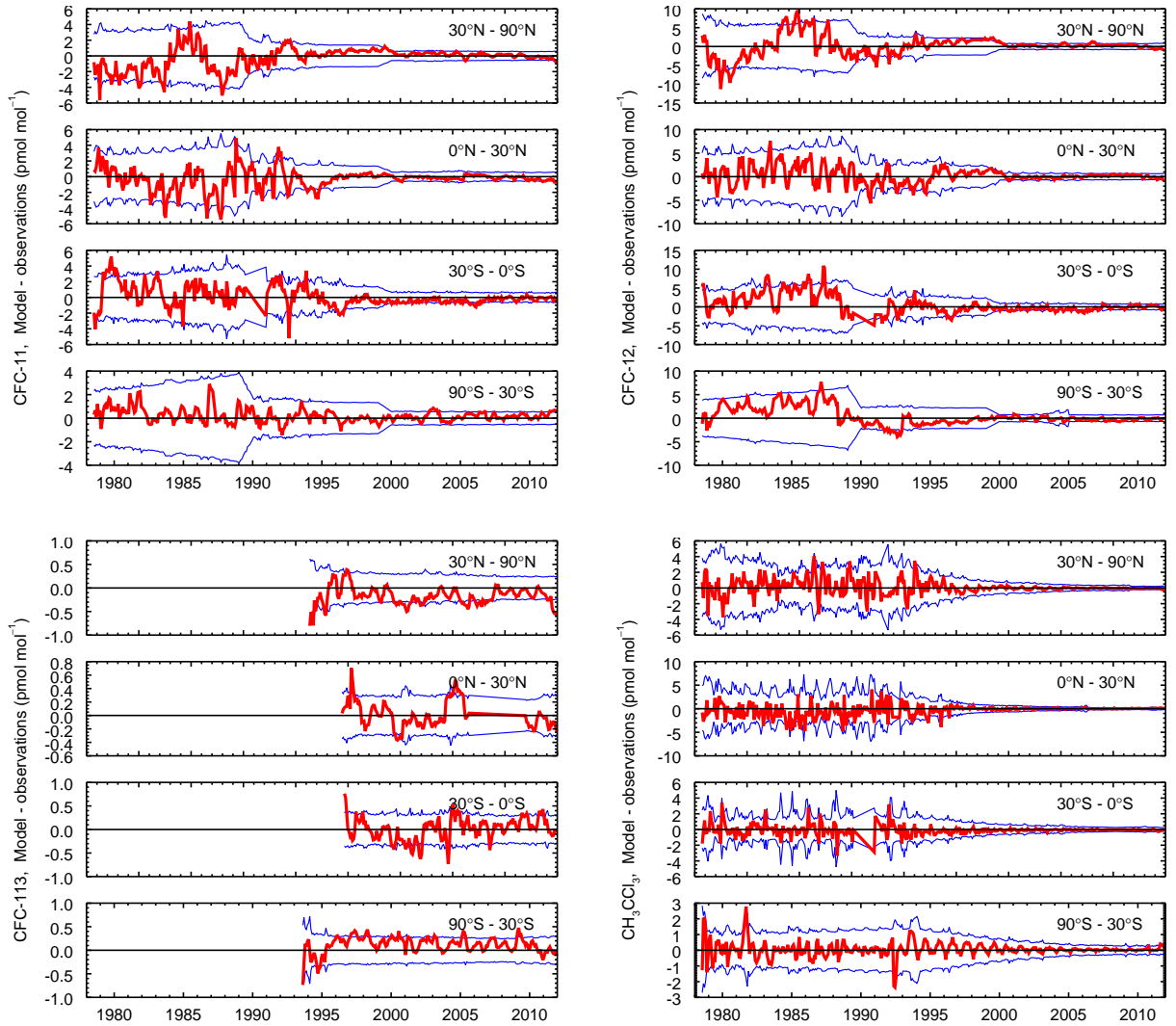


FIGURE 1. Inter-comparison of AGAGE observations and optimized model mole fractions. The red line shows the residual between the optimized and measured mole fractions in each semi-hemisphere. The blue lines show the 1-sigma measurement errors.

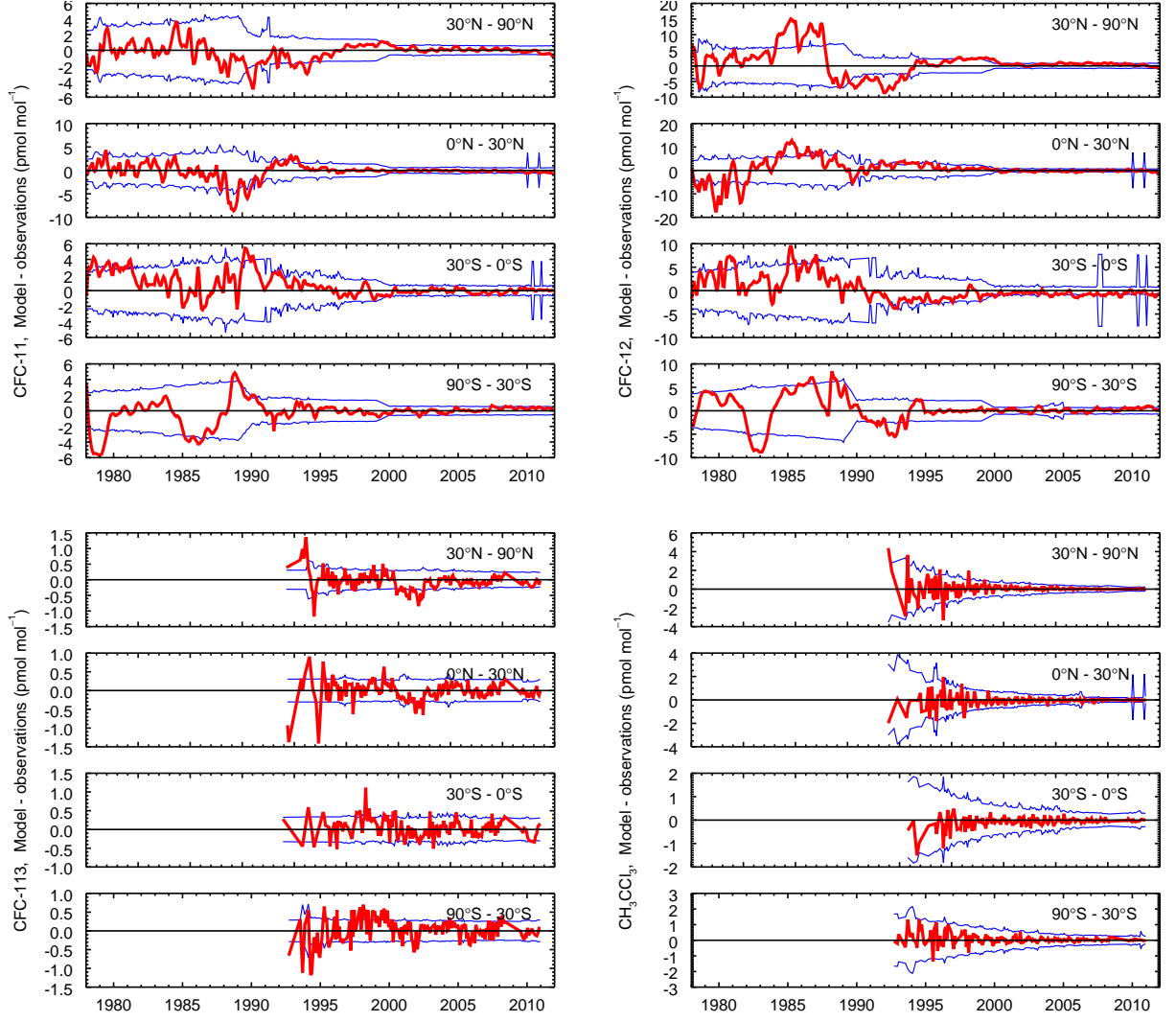


FIGURE 2. Inter-comparison of NOAA observations and optimized model mole fractions. The red line shows the residual between the optimized and measured mole fractions in each semi-hemisphere. The blue lines show the 1-sigma measurement errors.