

Received: 13 May 2012 – Accepted: 8 June 2012 – Published: 9 August 2012

Correspondence to: S. Aksoyoglu (sebnem.aksoyoglu@psi.ch)

Published by Copernicus Publications on behalf of the European Geosciences Union.

Discussion Paper | Discussion Paper | Discussion Paper | Discussion Paper | Discussion Paper

ACPD

12, 19921–19985, 2012

A novel approach to emission modelling of biogenic volatile organic compounds

D. C. Oderbolz et al.

Title Page

Abstract

Introduction

Conclusions

References

Tables

Figures

⏪

⏩

◀

▶

Back

Close

Full Screen / Esc

Printer-friendly Version

Interactive Discussion

19922



Abstract

Biogenic volatile organic compounds (BVOC) emitted from vegetation are important for the formation of secondary pollutants such as ozone and secondary organic aerosols (SOA) in the atmosphere. Therefore, BVOC emission are an important input for air quality models. To model these emissions with high spatial resolution, the accuracy of the underlying vegetation inventory is crucial. We present a BVOC emission model that accommodates different vegetation inventories and uses satellite-based measurements of greenness instead of pre-defined vegetation periods. This approach to seasonality implicitly treats effects caused by water or nutrient availability, altitude and latitude on a plant stand. Additionally, we test the influence of proposed seasonal variability in enzyme activity on BVOC emissions. In its present setup, the emission model calculates hourly emissions of isoprene, monoterpenes, sesquiterpenes and the oxygenated volatile organic compounds (OVOC) methanol, formaldehyde, formic acid, ethanol, acetaldehyde, acetone and acetic acid. In this study, emissions based on three different vegetation inventories are compared with each other and diurnal and seasonal variations in Europe are investigated for the year 2006. Two of these vegetation inventories require information on tree-cover as an input. We compare three different land-cover inventories (USGS GLCC, GLC2000 and Globcover 2.2) with respect to tree-cover. The often-used USGS GLCC land-cover inventory leads to a severe reduction of BVOC emissions due to a potential miss-attribution of broad-leaved trees and reduced tree-cover compared to the two other land-cover inventories. To account for uncertainties in the land-cover classification, we introduce land-cover correction factors for each relevant land-use category to adjust the tree-cover. The results are very sensitive to these factors within the plausible range. For June 2006, total monthly BVOC emissions decreased up to -27% with minimal and increased up to $+71\%$ with maximal factors, while in January 2006, the changes in monthly BVOC emissions were -54% and $+56\%$ with minimal and maximal factors, respectively. The new seasonality approach leads to a reduction in the annual emissions compared with non-adjusted data. The strongest

A novel approach to emission modelling of biogenic volatile organic compounds

D. C. Oderbolz et al.

Title Page

Abstract

Introduction

Conclusions

References

Tables

Figures



Back

Close

Full Screen / Esc

Printer-friendly Version

Interactive Discussion



A novel approach to emission modelling of biogenic volatile organic compounds

D. C. Oderbolz et al.

[Title Page](#)[Abstract](#)[Introduction](#)[Conclusions](#)[References](#)[Tables](#)[Figures](#)[⏪](#)[⏩](#)[◀](#)[▶](#)[Back](#)[Close](#)[Full Screen / Esc](#)[Printer-friendly Version](#)[Interactive Discussion](#)

reduction occurs in OVOC (up to -32%), the weakest in isoprene (as little as -19%). If also enzyme seasonality is taken into account, however, isoprene reacts with the steepest decrease of annual emissions, which are reduced by -44% to -49% , annual emissions of monoterpenes reduce between -30 and -35% . The sensitivity of the model to changes in temperature depends on the climatic zone but not on the vegetation inventory. The sensitivity is higher for temperature increases of 3 K ($+31\%$ to $+64\%$) than decreases by the same amount (-20 to -35%). The climatic zones “Cold except summer” and “arid” are most sensitive to temperature changes in January for isoprene and monoterpenes, respectively, while in June, “polar” is most sensitive to temperature for both isoprene and monoterpenes. Our model predicts the oxygenated volatile organic compounds to be the most abundant fraction of the annual European emissions ($3571\text{--}5328\text{ Gg yr}^{-1}$), followed by monoterpenes ($2964\text{--}4124\text{ Gg yr}^{-1}$), isoprene ($1450\text{--}2650\text{ Gg yr}^{-1}$) and sesquiterpenes ($150\text{--}257\text{ Gg yr}^{-1}$). We find regions with high isoprene emissions (most notably the Iberian Peninsula), but overall, oxygenated VOC dominate with $43\text{--}45\%$ (depending on the vegetation inventory) contribution to the total annual BVOC emissions in Europe. Isoprene contributes between $18\text{--}21\%$, monoterpenes $33\text{--}36\%$ and sesquiterpenes contribute $1\text{--}2\%$. We compare the concentrations of biogenic species simulated by an air quality model with measurements of isoprene and monoterpenes in Hohenpeissenberg (Germany) for both summer and winter. The agreement between observed and modelled concentrations is better in summer than in winter. This can partly be explained with the difficulty to model weather conditions in winter accurately, but also with the increased anthropogenic influence on the concentrations of BVOC compounds in winter. Our results suggest that land-cover inventories used to derive tree-cover must be chosen with care. Also, uncertainties in the classification of land-cover pixels must be taken into account and remain high. This problem must be addressed together with the remote sensing community. Our new approach using a greenness index for addressing seasonality of vegetation can be implemented easily in existing models. The importance of OVOC for air quality should be more deeply addressed by future studies, especially in smog chambers. Also, the fate

A novel approach to emission modelling of biogenic volatile organic compounds

D. C. Oderbolz et al.

[Title Page](#)[Abstract](#)[Introduction](#)[Conclusions](#)[References](#)[Tables](#)[Figures](#)[Back](#)[Close](#)[Full Screen / Esc](#)[Printer-friendly Version](#)[Interactive Discussion](#)

stress) is more uncertain (Duhl et al., 2008; Ormeño et al., 2007). Many biotic factors such as enzyme activity (Schnitzler et al., 1997), the age of a tree (Street et al., 1997; Niinemets, 2002) or the influence of herbivores (Arneeth and Niinemets, 2010; Lucas-Barbosa et al., 2011) and the influence of pollutants such as ozone (Llusià et al., 2002) are even more complex. There also exist semi-natural as well as anthropogenic sources of BVOC: when wood of conifers is burned, monoterpenes are released (Ingemarsson et al., 1998; Ciccioli et al., 2001; Rouvière et al., 2006), also wood-logging operations are known to release large amounts of monoterpenes (Strömvall and Petersson, 1991). Isoprene is also a by-product of combustion processes (Reimann et al., 2000) and is also emitted by the metabolism of humans (Salerno-Kennedy and Cashman, 2005) and other mammals (Rasmussen and Perrin, 1999).

Bottom-up BVOC models can be separated into two major groups: (1) process-based models, where the emissions are modelled from first principles on the cellular level (Zimmer et al., 2003; Keenan et al., 2009); (2) empirical models such as MEGAN (Model of Emissions of Gases and Aerosols from Nature) (Guenther et al., 2006) or seBVOC (semi-empirical emission module) (Steinbrecher et al., 2009) that use empirical formulas to describe emissions on the tree level. The model discussed in this paper belongs to the second group.

Studies on the aerosol composition in Switzerland and in Europe have shown that SOA is a major constituent of the fine mode (Lanz et al., 2008, 2010; Jimenez et al., 2009). Also, ^{14}C analysis showed that a major fraction of the SOA is non-fossil, which suggests that the precursors probably originate from wood burning and from biogenic emissions (Szidat et al., 2006). Recently, also cooking has been identified as a source of SOA (Mohr et al., 2012). One can therefore assume that BVOC are important precursors for SOA at least in summertime. We do not call such secondary organic aerosol “natural” since a large fraction of the oxidants needed for the conversion of the volatile compounds are strongly influenced by anthropogenic emissions, e.g. NO_x (Carlton et al., 2010).

A novel approach to emission modelling of biogenic volatile organic compounds

D. C. Oderbolz et al.

Title Page

Abstract

Introduction

Conclusions

References

Tables

Figures



Back

Close

Full Screen / Esc

Printer-friendly Version

Interactive Discussion



Air quality modelling studies for Switzerland suggest that the formation of SOA is to a large extent due to biogenic precursors such as monoterpenes and sesquiterpenes (Andreani-Aksoyoglu et al., 2008; Aksoyoglu et al., 2011). These studies used tree specific emission functions of isoprene and monoterpenes for a few trees (Andreani-Aksoyoglu and Keller, 1995; Keller et al., 1995) and a simple estimation of sesquiterpenes. Similar studies (e.g. Stewart et al., 2003; Steinbrecher et al., 2009) suggested that the results of emission models are very sensitive to the underlying vegetation inventories. Studies that investigate approaches to estimate BVOC emissions from the vegetation at the species level are therefore highly relevant. According to Arneth et al. (2011), such studies should cover both the vegetation inventories and the mechanistic description of emissions from the major BVOC sources. These studies should be on a scale and resolution that is relevant for atmospheric chemistry and suitable for Chemistry Transport Models (CTM) used for studies of the fate of BVOCs. The aim of this study is to improve the understanding of BVOC emissions in relation to atmospheric chemistry.

First, we investigate the effect of different vegetation inventories on emission predicted by a tree specific BVOC emission model. We study the effect of three different European vegetation inventories by Simpson et al. (1999), Köble and Seufert (2001) and Skjøth et al. (2008a), respectively. Second, we study the influence of the use of the three different global land-cover inventories based on data of the AVHRR satellite (USGS GLCC), the SPOT satellite (GLC2000) and the Envisat satellite (Globcover) on projecting BVOC emissions. We discuss the results in relation to the four main groups of BVOCs: isoprene, monoterpenes, sesquiterpenes and oxygenated VOC, respectively. Further, we will compare simulations of concentrations of isoprene and monoterpenes using the CAMx model to observations of ambient air concentrations in summer and winter at Hohenpeissenberg in 2006.

The year 2006 was chosen for BVOC modelling as our laboratory performed detailed atmospheric aerosol field studies in January and June of this year. These BVOC

emissions will be used for a future publication on the effect of BVOC emissions on both continental as well as on regional scale.

2 Methodology

2.1 Biogenic VOC species

5 The biogenic species included in this study are isoprene (ISOP), monoterpenes (MT), sesquiterpenes (SQT) and the most important oxygenated VOC compounds (OVOC): methanol, formaldehyde, formic acid, ethanol, acetaldehyde, acetone and acetic acid. OVOCs are discussed as one lumped species (OVOC) with a molar mass of 38.83g mol^{-1} (Table S2). Chemically, the first three classes are related: ISOP (2-methyl-1,3-butadiene) is the building block for MT (2 ISOP skeletons) and SQT (3 ISOP skeletons). Globally, ISOP dominates the biogenic emissions – about 44 % of the global BVOC emissions are ISOP (Guenther et al., 1995), half of which stems from tropical broad-leaved trees (Guenther et al., 2006). As we will show later, this is not the case for Europe under the assumptions used here.

15 The most important species emitted by plants are depicted in Table S1. In our model, the individual chemical compounds of each class are lumped. We assume that the emission characteristics of the compounds within one class do not differ, although this assumption does not always hold in nature (Staudt et al., 2000; Hakola et al., 2006).

Although BVOC species are emitted mainly by trees, we included emissions from agriculture and grass as well for completeness. These vegetation types were derived from Globcover 2.2 data in the same way for S1 and S2 while they were already present in S3. The classification of trees is very important for emission calculations. We classified trees not only as needle-leaved (conifers) and broad-leaved, but also distinguished between deciduous and evergreen trees, as suggested by Steinbrecher et al. (2009).

25 All possible combinations of these classes do occur: deciduous broad-leaved (e.g.

A novel approach to emission modelling of biogenic volatile organic compounds

D. C. Oderbolz et al.

Title Page

Abstract

Introduction

Conclusions

References

Tables

Figures



Back

Close

Full Screen / Esc

Printer-friendly Version

Interactive Discussion

Beech), deciduous needle-leaved (e.g. Larch), evergreen broad-leaved (e.g. Eucalyptus), evergreen needle-leaved (e.g. Pine) (Table S3).

2.2 Air quality model system

The biogenic emission model requires meteorological parameters such as temperature and irradiance to adjust the emissions to the environmental conditions. The meteorological model Weather Research and Forecasting Model (WRF) version 3.2.1 (Michalakes et al., 2004) was used to simulate meteorological parameters for January and June 2006. The initial and boundary conditions for WRF were derived from the ECMWF ERA40 reanalysis (Uppala et al., 2005) (available every 6 h), snow data was refined using 8-day average MODIS snow cover MOD10C2 from NASA (available from <http://modis-snow-ice.gsfc.nasa.gov>). For WRF, one domain with a horizontal resolution of $0.25 \times 0.125^\circ$ and 31 σ layers (lowest layer depth: 20 m, top of the domain at about 17000 m a.s.l.) was used. The domain has an extent of 15.0°W to 35.0°E of longitude and 35.0 to 70.0°N of latitude, which results in 200 by 280 cells in each layer. The surface layer physics (Monin-Obukhov) and boundary layer parameterisation (Mellor-Yamada-Janjic) is based on the work of Janjic (1994). Data in the layers above 1 km above ground was nudged towards ECMWF data.

We calculated the gas phase BVOC concentrations using the air quality model CAMx (Comprehensive Air Quality Model with extensions, version 5.30, ENVIRON, 2010) for the same time period in order to compare them with available measurements. The horizontal resolution of the domain for CAMx is the same as for WRF, but uses only 14 σ layers (lowest layer depth: 20 m, top of the domain at about 7000 m a.s.l.). Anthropogenic emissions are based on the MACC 2006 inventory provided by TNO (Kuenen et al., 2011) and were kept constant for the different scenarios. All CAMx simulations were carried out using the CAMxRunner (Oderbolz et al., 2012), a modular control environment for CAMx.

A novel approach to emission modelling of biogenic volatile organic compounds

D. C. Oderbolz et al.

Title Page

Abstract

Introduction

Conclusions

References

Tables

Figures

⏪

⏩

◀

▶

Back

Close

Full Screen / Esc

Printer-friendly Version

Interactive Discussion



2.3 Emission model

The biogenic emission model used so far at the Paul Scherrer Institute was designed for the most abundant tree species in Switzerland (Andreani-Aksoyoglu and Keller, 1995; Keller et al., 1995). It was based on limited data about the emission rates of those species. The new, array-based approach discussed here is able to efficiently calculate emission data for an arbitrary number of vegetation types. The emission model was written in IDL, version 8.0.1 which supports fast parallel operations on large arrays. This allowed us to process more than one-hundred vegetation types together. The model proceeds by stepping through each model hour and produces one file per day. This file is then merged with the anthropogenic emissions and used as input for CAMx to simulate ambient concentrations (Supplement Fig. S1).

BVOC emissions largely depend on temperature (T) and solar radiation (photon flux) in the wavelength range from 400 to 700 nm, which is called photosynthetically active radiation (PAR) and is measured in $\mu\text{molm}^{-2}\text{s}^{-1}$. The emission model distinguishes between synthesis (depending on both temperature and light) and pool emissions (depending only on temperature) as suggested by Smiatek and Steinbrecher (2006). ISOP emission is treated as pure synthesis emission whereas MT comprise of both synthesis (MTS) and pool (MTP) emission. On the other hand OVOC and SQT emissions are treated as pure pool emissions.

The basic equations for the emission rates are derived from the widely accepted formulas by Guenther (Guenther et al., 1995; Guenther, 1997):

$$E_{\text{ISOP},i} = A_i \times e_{0,\text{ISOP},i} \times D_i \times \gamma_{\text{S}}(\text{PAR}, T) \times C_{\text{ISOP},i} \quad (1)$$

$$E_{\text{MTS},i} = A_i \times e_{0,\text{MTS},i} \times D_i \times \gamma_{\text{S}}(\text{PAR}, T) \times C_{\text{MTS},i} \quad (2)$$

$$E_{\text{MTP},i} = A_i \times e_{0,\text{MTP},i} \times D_i \times \gamma_{\text{P}}(T) \times C_{\text{MTP},i} \quad (3)$$

$$E_{\text{SQT},i} = A_i \times e_{0,\text{SQT},i} \times D_i \times \gamma_{\text{P}}(T) \times C_{\text{SQT},i} \quad (4)$$

$$E_{\text{OVOC},i} = A_i \times e_{0,\text{OVOC},i} \times D_i \times \gamma_{\text{P}}(T) \times C_{\text{OVOC},i} \quad (5)$$

A novel approach to emission modelling of biogenic volatile organic compounds

D. C. Oderbolz et al.

Title Page

Abstract

Introduction

Conclusions

References

Tables

Figures

⏪

⏩

◀

▶

Back

Close

Full Screen / Esc

Printer-friendly Version

Interactive Discussion



A novel approach to emission modelling of biogenic volatile organic compounds

D. C. Oderbolz et al.

Title Page

Abstract

Introduction

Conclusions

References

Tables

Figures

⏪

⏩

◀

▶

Back

Close

Full Screen / Esc

Printer-friendly Version

Interactive Discussion

where i is the vegetation type, E is the emission rate of a chemical compound in $\mu\text{g h}^{-1} \text{cell}^{-1}$, A is the projected area covered by vegetation type (for trees this is the crown closure) i in a grid cell in m^2 , e_0 is the basal emission rate in $\mu\text{g h}^{-1} \text{g}_{\text{dw}}^{-1}$ at 30°C and $\text{PAR} = 1000 \mu\text{mol m}^{-2} \text{s}^{-1}$, D is the foliar biomass density ($\text{g}_{\text{dw}} \text{m}^{-2}$), γ_{P} is the environmental correction factor for pool emissions, γ_{S} is the environmental correction factor for synthesis emissions and C is the seasonality adjustment factor which depends on the season as well as on the location. Note that both D and e_0 are given in terms of the dry weight of the foliage ($_{\text{dw}}$).

Values for e_0 , D_i are given in Table S3 that lists the values for all vegetation types considered as given in Steinbrecher et al. (2009).

2.3.1 Environmental correction factors γ

The environmental correction factors γ are empirical functions to correct the basal emission rates to a given leaf temperature T and photosynthetically active radiation PAR. The form of these functions depends on the compound in question. We consider two kinds of emissions: pool (γ_{P}) and synthesis (γ_{S}). Pool emissions are related to the evaporation of stored BVOC in pools with a large capacity, a process that is decoupled from photosynthesis. In contrast to this, synthesis emissions are considered as a direct by-product of photosynthesis. Compounds may also be a mixture of both emission types as it is the case for MT.

Since ISOP is modelled as co-synthesised with carbohydrates (pure synthesis), the temperature response is similar to the response of photosynthesis. The functions used are shown in Table S4 as defined by Guenther (1997). Figures 1 and 2 show the dependence of the γ_{P} and γ_{S} on T at constant PAR and on PAR at constant T , respectively.

In the case of pool emissions, the temperature response of the model shows no limitation at high temperatures. To properly model the real response, the pool size and the rate of the replenishment of the pools must in principle be known. However, the pool size can generally be assumed to be infinite, because theoretically, the pool capacity is

high enough to sustain a constant emission of $1 \mu\text{g h}^{-1} \text{g}_{\text{dw}}^{-1}$ over 1500 h at 30°C based on a MT content of about $900 \mu\text{g g}^{-1}$ needle fresh weight of *Picea abies* (Schönwitz et al., 1987) assuming a needle water content of 50 % (Schmidt, 1953).

2.3.2 Seasonality adjustment factor C

Long-term seasonal fluctuation of the vegetation due to the development of leaves and needles must be taken into account. Here we use a simplified description of this complex phenomena (Battey, 2000), as a full mechanistic description of phenology including calibration values for more than 100 vegetation types still remains to be developed (Hickler et al., 2012).

The seasonality adjustment factor C is used to express the low-frequency influence of the environmental conditions on the emissions of vegetation type i . In the formulation used here, C is a function of season and of the trees' location. In our model, we are able to distinguish between two major aspects of seasonality: (1) the seasonality of the foliar biomass (C_b) and (2) the seasonality of the activity of the enzymes needed for photosynthesis (C_s):

$$C = C_b \times C_s \quad (6)$$

For the vegetation type “agriculture”, we set C_b to 1.0 in the months April–August and 0.0 during the rest of the year, bearing in mind that this is a simplification.

The seasonality of the foliar biomass C_b is estimated using satellite measurements of the NDVI (Normalised Difference Vegetation Index) from the MODIS instrument aboard the Terra satellite (MOD13C1). This index was chosen because it is directly correlated to the chlorophyll concentration (Huete et al., 1999) as well as to the conversion efficiency of absorbed energy of foliage (Nakaji et al., 2007). It was also used to determine the onset of flowering of birch trees (Karlsen et al., 2009). NDVI also correlates to above-ground biomass (Boelman et al., 2003) and leaf area index (LAI) (Tucker, 1979), therefore, we use it as a proxy for changes in foliar biomass. Values of NDVI are in the

A novel approach to emission modelling of biogenic volatile organic compounds

D. C. Oderbolz et al.

Title Page

Abstract

Introduction

Conclusions

References

Tables

Figures

⏪

⏩

◀

▶

Back

Close

Full Screen / Esc

Printer-friendly Version

Interactive Discussion



range $[-1, 1]$ where a value of 1 indicates the maximum greenness, e.g. tropical forests (Huete et al., 1999) while negative values indicate liquid water, ice or snow.

To obtain this foliar biomass correction factor C_b , we used 25 available 16-day averages of NDVI from 19 December 2005 to 3 January 2007 at a resolution of 0.05° from the US Geological Survey (<http://lpdaac.usgs.gov>). To obtain a local relative measure of greenness, we normalised the NDVI data for each pixel by the maximum annual value of each pixel and spline-interpolated the result to daily values. Values below zero were set to zero prior to interpolation.

Since NDVI drops to or below zero (in this case we set it to zero) when snow is present, our factor suppresses emissions under snow cover. The same is true for ice and water surfaces. It has been discussed that especially emissions of MT might accumulate below a snow cover and be released on a short timescale at snow melt (Swanson et al., 2005), but this effect is currently not included in our model.

The average variation of the normalised NDVI with time is shown in Fig. 3 for the six climatic zones (see Fig. S2) used in this study. These zones represent an updated version of the well-known Köppen-Geiger climate classification (Peel et al., 2007). Of the original 19 climatic zones, we used an aggregate of six zones for Europe: cold except summer, cold, temperate with dry summer, temperate without dry season, arid and polar. The time of the maximum normalised NDVI varies with the zones, arid being the earliest and polar the latest.

Some zones, most notable the arid and the temperate zone show a bimodal pattern of greenness. This behaviour was also observed by Evrendilek and Gulbeyaz (2008) in Turkey, a country that consists of a wide range of climatic zones. We attribute this bimodal behaviour of the seasonality to the higher water availability in spring and autumn and the high fraction of evergreen plants in those zones.

To account for the seasonal variability of photosynthesis enzyme activity, we introduced the factor C_s for synthesis emissions to assess the sensitivity of the model to this effect. Depending on the type of tree, different functions are used; for deciduous broad-leaved trees, the function is derived from data from Schnitzler et al. (1997) and

A novel approach to emission modelling of biogenic volatile organic compounds

D. C. Oderbolz et al.

Title Page

Abstract

Introduction

Conclusions

References

Tables

Figures

⏪

⏩

◀

▶

Back

Close

Full Screen / Esc

Printer-friendly Version

Interactive Discussion

Lehning et al. (2001): $C_s = a \times \exp(-.5 \times ((\text{doy} - d0)/b)^2)$ where doy is the day of the year and the empirical factors $a = 1.0091$, $d0 = 205.2055$, $b = 36.5647$. The function for evergreen broad-leaved trees is from Ciccioli et al. (2003) (Fig. S3).

For conifers, our model uses an approach put forward by Staudt et al. (2000), which was also used by Steinbrecher et al. (2009). The seasonal correction factor is a function of the month (M) (the form of this function is bell shaped, comparable to the function for deciduous broad-leaved trees) and depends on the latitude of the location (Steinbrecher et al., 2009).

Note that when the seasonality of the enzyme activity is taken into account, the inventories are called S1e-S3e, without the e, only C_b is taken into account. This distinction is made because it cannot be precluded that there is confounding between C_s and C_b , which would imply double counting of down-regulation.

2.3.3 Canopy model

The lower part of the plant canopy is shaded by the leaves and branches above causing a decrease of PAR with increasing distance from the canopy top. As a consequence, leaf temperature also decreases, which finally results in lower emission rates. In our approach we applied a simple Lambert-Beer-like model to assess the influence of the canopy on the radiation levels the leaves or needles are exposed to. The radiation correction is calculated for each vegetation type separately (except for agriculture and grass), by subdividing the canopy in n layers using downward normalised tree heights (relative to the total tree height) as z -coordinates (Niinemets, 2010). The biomass is scaled by the relative leaf area distribution (expressed as a probability density function) in each layer (Fig. S4). We used ten layers for our simulations because using more layers did not alter the results significantly, but unduly increased the computation time (mostly due to memory requirements).

We assume that the leaf angle distribution (LAD) is constant and isotropic for a given tree. Diffuse radiation is of vital importance in cloudy conditions (Ross, 1981), because

A novel approach to emission modelling of biogenic volatile organic compounds

D. C. Oderbolz et al.

Title Page

Abstract

Introduction

Conclusions

References

Tables

Figures

⏪

⏩

◀

▶

Back

Close

Full Screen / Esc

Printer-friendly Version

Interactive Discussion



it is the only source of radiation under these conditions. We assume, consistently with Baldocchi et al. (1985), that the diffuse radiation stems from an isotropic sky.

Measurements carried out in Switzerland by Leuzinger and Körner (2007) indicate that the leaf temperature of conifers is close to air temperature (max. 2.7 K above ambient), whereas broad-leaved trees exhibit leaf temperatures of up to 5 K above ambient temperature. In the model, the leaf temperature is a function of the air temperature, the radiation regime as well as the integrated heat input of the current day. This procedure is described in-depth in the Supplement (Sect. S1).

The numerical weather prediction model WRF predicts the light irradiance in W m^{-2} which must be converted to PAR. LOWTRAN7 (Low resolution atmospheric Transmission, Kniezys et al., 1988) simulations showed that the conversion factor is rather constant over a large range of solar elevation angles. In our simulations we used a conversion factor of $2.1 \text{ mol s}^{-1} \text{ W}^{-1}$.

The canopy model has the strongest influence on ISOP, which annually is reduced by about 34 %. Annual MT emissions are reduced by 21 %, SQT by 11 % and OVOC are reduced by about 4 % in the case of S1. Total annual BVOC emissions of S1 are reduced by 18 % due to the canopy model.

2.4 Land cover and vegetation inventories

In this study, we compare three different vegetation inventories. The first two were prepared specifically for this work and are based on the studies of Skjørth et al. (2008a) (S1) and Simpson et al. (1999) (S2), respectively. The third inventory (S3) from Köble and Seufert (2001) was not changed except for re-projection and spatial re-sampling.

For S1 and S2, we followed the work-flow illustrated in Fig. S5 as they require a land-cover data set in order to produce the final vegetation inventory.

A novel approach to emission modelling of biogenic volatile organic compounds

D. C. Oderbolz et al.

Title Page

Abstract

Introduction

Conclusions

References

Tables

Figures



Back

Close

Full Screen / Esc

Printer-friendly Version

Interactive Discussion



2.4.1 Land cover data associated with S1 and S2

The basic land-cover data set for S1 and S2 is the regional product for Western Europe of the land-cover inventory Globcover 2.2 (Bontemps et al., 2011) which is based on data of the years 2005 and 2006. This data set is a categorical land-cover inventory (each pixel contains only one out of 51 land-cover categories) with a spatial resolution of 1'' in longitudinal and latitudinal direction. We aggregated these cells into a fractional land-cover inventory using this formula:

$$A_i = A \times f_i \times \sum_{c=1}^N \left(\frac{n_c}{4050} \times f_c \right) \quad (7)$$

where A is the area of the given cell of the model domain (the target cell), f_i is the fraction of vegetation type i in the target cell and depends on the approach used (for S1, f_i is given in terms of conifers or broad-leaved trees, in S2 it is given in terms of forest). c is the index of a Globcover 2.2 forest land-cover category, N is the number of Globcover 2.2 forest land-cover categories, n_c is the number of Globcover 2.2 cells of class c in the target cell. The constant 4050 is the number of Globcover 2.2 cells per target cell, reflecting the much higher resolution of the Globcover 2.2 data set compared to the model resolution.

The land-cover correction factor f_c describes what fraction of a pixel of type c is really covered by vegetation (Table S5). These factors are average values estimated using the Globcover 2.2 documentation (Bontemps et al., 2011) – we assume that the percentages given refer to crown closure, even though this is not stated explicitly. We also tested the sensitivity of the model response to the land-cover correction factors and in addition used two other land-cover inventories (USGS GLCC and GLC2000) for comparison. The USGS GLCC land-cover inventory often used in conjunction with the WRF weather prediction model. This land-cover inventory is based on data acquired by the Advanced Very High Resolution Radiometer (AVHRR) instrument from April 1992 until March 1993 (<http://edc2.usgs.gov/glcc/background.php>). The 30'' resolution

19936

A novel approach to emission modelling of biogenic volatile organic compounds

D. C. Oderbolz et al.

Title Page

Abstract

Introduction

Conclusions

References

Tables

Figures



Back

Close

Full Screen / Esc

Printer-friendly Version

Interactive Discussion



of USGS GLCC was used. GCL2000 is a predecessor of Globcover 2.2 (Hartley et al., 2006).

2.4.2 Vegetation inventory S1

This vegetation inventory is based on the study of Skjøth et al. (2008a). In order to prepare the inventory S1, a map of the area density of both conifers and broad-leaved trees is needed. We converted the land-cover categories of Globcover 2.2 using the factors given in Table S5 as described above (Eq. 7).

Then the detailed regional maps described in Skjøth et al. (2008a) were used to estimate the distribution of the vegetation types in the model domain: first, the original maps were reprojected from the EMEP50 Grid (<http://www.emep.int/grid/griddescr.html>) to our domain and then multiplied with the derived areas of conifers and broad-leaved trees. This yields the percentage of each of the vegetation types considered in each cell. This vegetation inventory contains 41 vegetation types (39 original ones plus agriculture and grass). Data is often given at the genus level (see Table S3). Note that this does not imply double counting. Assume that in one region S1 resolved between *Quercus robur* and *Quercus suber*, while in another region which in reality has the same tree-cover, just the genus *Quercus* sp. is indicated. This introduces uncertainty about the actual tree species, but it does not mean that trees are counted twice.

When the text refers to S1, only biomass seasonality is applied ($C_s = 1.0$).

2.4.3 Vegetation inventory S2

The second vegetation inventory prepared in this work is based on the approach given by Simpson et al. (1999) that delivers a national estimate of species distribution of 32 vegetation types (Table S3) in Europe by using statistical input at national scale for 37 countries. However, because at the time data for the Balkans was sparse, this region is represented only coarsely (Simpson et al., 1999).

A novel approach to emission modelling of biogenic volatile organic compounds

D. C. Oderbolz et al.

Title Page

Abstract

Introduction

Conclusions

References

Tables

Figures

⏪

⏩

◀

▶

Back

Close

Full Screen / Esc

Printer-friendly Version

Interactive Discussion



In the case of this inventory, a map of the area density of forests is needed, therefore the factors f_c differ from the ones for S1 for the mixed forest classes (Table S5). Although the approach is similar to the one in S1, in S2 the regions are the countries and the percentages are given as forest fractions.

5 When the text refers to S2, only biomass seasonality is applied ($C_s = 1.0$).

2.4.4 Vegetation inventory S3

This vegetation inventory was prepared by Köble and Seufert (2001), based on data of the ICP-forest network UN-ECE (UN-ECE, 1998). We only modified the projection from the original Lambert Azimuthal to Equirectangular projection and resolution from
10 1×1 km to $0.25 \times 0.125^\circ$ by means of ArcGIS 10 by ESRI (<http://www.esri.com/software/arcgis/arcgis10>). This vegetation inventory has the highest thematic resolution of which we use *119 vegetation types*. Most data of S3 is given at the species level. Only for some trees, data is available at the genus level.

Inventory S3 only covers parts of the CAMx model domain, due to the fact that it
15 was compiled mainly for EU countries. We therefore use the terms “original countries” (the countries in which a given vegetation inventory is defined) and “common countries” (the set of countries that are common to all three vegetation inventories considered here) while comparing the tree inventories. In the “common countries” we exclude these countries: Albania, Algeria, Bosnia and Herzegovina, Cyprus, Kosovo, Macedonia, Malta, Montenegro, Morocco, Russian Federation, Serbia, Tunisia, Turkey and
20 Ukraine.

When the text refers to S3, only biomass seasonality is applied ($C_s = 1.0$).

2.4.5 Comparison of vegetation inventories

The total forest area covered by the three inventories is listed in Table S6. For comparison, the corresponding areas from Skjøth et al. (2008a) and Simpson et al. (1999)
25 are indicated. The original data set created by Skjøth et al. (2008a) was based on

A novel approach to emission modelling of biogenic volatile organic compounds

D. C. Oderbolz et al.

Title Page

Abstract

Introduction

Conclusions

References

Tables

Figures

⏪

⏩

◀

▶

Back

Close

Full Screen / Esc

Printer-friendly Version

Interactive Discussion



A novel approach to emission modelling of biogenic volatile organic compounds

D. C. Oderbolz et al.

Title Page

Abstract

Introduction

Conclusions

References

Tables

Figures

⏪

⏩

◀

▶

Back

Close

Full Screen / Esc

Printer-friendly Version

Interactive Discussion



GLC2000 and used land-cover correction factors f_c of 1.0 (see Eq. 7). The table shows that S1, which is based on the same regional data but Globcover 2.2 does not agree with the original data set for many countries. The same is true for S2, which can be compared to the data by Simpson et al. (1999) on which it is based. In Sect. 3.3 we will discuss the influence of the underlying land-cover inventory to the emissions. The differences are mostly due to differences in the underlying land-cover database which are caused by uncertainties in the land-cover classification.

The tree distribution of the inventories S1 to S3 is shown as a false-colour image in Fig. 4 where the intensity of the green channel is proportional to the fraction of ever-green trees in each pixel (grid cell) and the red channel is proportional to the fraction of the deciduous trees. Since S3 has the highest thematic resolution, the areas covered by the individual vegetation types are usually smaller than in the other inventories, where species have been lumped.

In general, tree density is higher in S1 and S2 than in S3. However, the distribution of the trees is less smooth in S3, which causes this vegetation inventory to look more “speckled”. This is reflected in the relative standard deviations ($RSD = \frac{s}{\bar{x}}$) of the total tree-cover in each cell of the inventories. S3 has an RSD of 140 %, while S1 and S2 have an RSD of 75 % and 72 %, respectively.

2.4.6 Standard emission potential (SEP)

Using the tree densities, we can directly derive the potential of the vegetation for BVOC emissions in Europe. We define the standard emission potential (SEP) for compound j as follows:

$$SEP_j = \sum A_i \times D_i \times e_{0,j,i} \quad (8)$$

where i , A_i , D_i and e_0 are the same parameters as defined in Sect. 2.3.

The fields thus calculated indicate the emissions that would result at standard conditions $T = 30^\circ$ and $PAR = 1000 \mu\text{mol m}^{-2} \text{s}^{-1}$, neglecting corrections for seasonality.

Figure 5 shows the standard emission potentials for each compound and vegetation inventory in Europe. The standard emission potential for Northwest Africa and Turkey in S2 refer to agriculture and grass since there are no trees for these regions in inventory S2.

When the standard emission potential of the tree inventories (Fig. 5) is compared, the general spatial distribution of the emissions is similar due to the fact that both use the same definition of forests based on Globcover 2.2. The inventory S3, however, has a fundamentally different distribution due to the different approach based on the interpolation of 5513 sample plots in 30 European countries (Köble and Seufert, 2001).

3 Results and discussion

Here we present the main results in relation to the overall objective of the study. These results are grouped into five main sections: (a) continental scale BVOC modelling results; (b) BVOC modelling results in different European climatic regions and countries; (c) seasonal and daily variation of BVOC emissions; (d) sensitivity of BVOC emissions to temperature and the three land-cover data sets Globcover 2.2, GCL2000 and USGS GLCC; (e) comparison of measured ambient ISOP and MT concentrations with concentrations modelled using our BVOC emission model and the CAMx air quality model.

3.1 Continental scale BVOC modelling results

The total annual emissions of each BVOC compound for all three tree inventories are shown at the bottom of Table 1. S1 has the highest emissions for all compounds when emissions are calculated on the basis of original data (original countries). When the emissions are calculated only in the common countries, the emissions by S1 exceed the other inventories for all compounds except MT, where S3 has higher emissions. The range of the annual emissions for the original countries is 3571–5327 Ggyr⁻¹ for OVOC, 2964–4124 Ggyr⁻¹ for MT, 1450–2650 Ggyr⁻¹ for ISOP and 150–257 Ggyr⁻¹

A novel approach to emission modelling of biogenic volatile organic compounds

D. C. Oderbolz et al.

Title Page

Abstract

Introduction

Conclusions

References

Tables

Figures

⏪

⏩

◀

▶

Back

Close

Full Screen / Esc

Printer-friendly Version

Interactive Discussion



A novel approach to emission modelling of biogenic volatile organic compounds

D. C. Oderbolz et al.

Title Page

Abstract

Introduction

Conclusions

References

Tables

Figures

⏪

⏩

◀

▶

Back

Close

Full Screen / Esc

Printer-friendly Version

Interactive Discussion

for SQT. The latitudinal gradient of the emissions due to the three inventories differs considerably (Fig. 6), illustrating the fact that even if the monthly totals are similar, the spatial distribution differs. S1 has a clear negative trend with increasing latitude (higher than about 36°N), which is accentuated by the fact that this is the only inventory where Northwest Africa contributes substantially. The latitudinal gradient for S2 is smoother due to its large regions, with a maximum at 57°N . S3, on the other hand shows high values in the south (in the band between 37°N and 44°N) and then again increased values at latitudes around 60°N . Considering the composition of the emissions of S1, the gradients differ as well (Fig. 6b). OVOC show a similar negative trend like the total emissions of S1. OVOC can be seen as a tracer for forest density and temperature because most of the vegetation types have a basal emission rate of $2\mu\text{g h}^{-1}\text{g}_{\text{dw}}^{-1}$. Notable exceptions are *Fagus sylvatica* (European Beech) with $10\mu\text{g h}^{-1}\text{g}_{\text{dw}}^{-1}$ and *Quercus ilex* (Evergreen oak) with $4.08\mu\text{g h}^{-1}\text{g}_{\text{dw}}^{-1}$ (Table S3). MT show a pronounced peak centred around 38°N which can be attributed mostly to the evergreen oaks and conifers in North West Africa and the Iberian Peninsula. Then, centred around 55°N a broader and weaker peak is visible, this is mostly due to *Fagus sylvatica* with a high emission factor for MTS emission ($21.14\mu\text{g h}^{-1}\text{g}_{\text{dw}}^{-1}$). ISOP shows a similar trend like OVOC, only that the highest peak of ISOP is at higher latitudes (around 41°N), which is the latitude of the Northern part of the Iberian Peninsula. SQT are at a much lower level than the other compounds, with slightly increasing emissions in latitudes higher than 52°N . This is mostly due to the increased density of *Betula* sp. in the boreal zone, with their high emission factor of $2\mu\text{g h}^{-1}\text{g}_{\text{dw}}^{-1}$, compared to the default emission factor for SQT of $0.1\mu\text{g h}^{-1}\text{g}_{\text{dw}}^{-1}$.

On the tree species level, some trees are especially interesting. For example, the neophyte *Eucalyptus* sp. covers only an area of about $12'600\text{km}^2$ (in S3), which is about 0.24 % of the landmass covered by S3, but it is predicted to produce 17 % of the annual ISOP and 2 % of the annual MT for inventory S3 due to the large emission factors and favourable conditions. This illustrates that even minor species may have a large influence on BVOC emissions and stresses the need for highly resolved tree

inventories. *Eucalyptus* sp. is a case where the inventories differ strongly: in S1 and S2 *Eucalyptus* sp. only produce 3% of the annual ISOP emissions. *Eucalyptus* sp. is a fast-growing tree that is planted commercially and harvested within a few years, therefore it is possible that the plantation pattern changes rapidly (Street et al., 1997).

5 On the other hand, trees of the genus *Quercus* sp. clearly dominate the European ISOP emissions both because they are common and have high emission factors. Depending on the inventories, oaks produce 69% (S1), 51% (S2) and 64% (S3) of the annual biogenic ISOP in Europe.

10 We have determined the top ten emitting vegetation types for the three inventories (Tables 2 to 5) on an annual basis. The top ten vegetation types with respect to emissions explain a high fraction of the total emissions. The fraction of the annual emissions contributed by the top emitters is 92–97%, 82–93%, 90–95% and 89–96% for ISOP, MT, SQT and OVOCs, respectively (Tables 2–5).

15 The contribution of the vegetation type “agriculture” is significant but varies with the vegetation inventory: 3–14% of the annual ISOP emissions, 3–12% of the annual emissions of MT and 7–27% of the annual OVOC emissions are due to “agriculture” (the reference emission factor of “agriculture” for SQT is zero).

3.1.1 BVOC modelling results in different European climatic regions and countries

20 This section discusses BVOC modelling results in different climatic zones and these regions in the model domain: Northwest Africa, Central Europe, The Iberian Peninsula, The Balkan Peninsula, Scandinavia, Italy, British Isles, Baltic States and the Benelux countries. Emissions for these regions are compared in Table 7 and emissions in June and January 2006 are shown in Figs. 7 and S6, respectively.

25 The annual emissions in Gg by *climatic zone* are shown in Tables S7 and S8 for the original and the common countries, respectively. When comparing the emissions on a zone-by-zone basis for the countries common to all inventories (Table S8), the relative differences between the inventories (taking S1 as the reference) is in the range

A novel approach to emission modelling of biogenic volatile organic compounds

D. C. Oderbolz et al.

Title Page

Abstract

Introduction

Conclusions

References

Tables

Figures

⏪

⏩

◀

▶

Back

Close

Full Screen / Esc

Printer-friendly Version

Interactive Discussion



of -59 % (MT in the “arid” zone of S2) to +97 % (OVOC in the “cold with cold summer” zone of S3).

Over most of the regions discussed below, the most important species are similar between inventories, but their spatial distribution varies. This cannot be seen in the totals but is highly important for 3-D air quality modelling. This is crucial in proximity of large cities with strong anthropogenic emissions. For example, the inventories differ strongly close to Paris – S1 predicts strong ISOP emissions about 100km south of Paris, while in S3, emissions of a similar magnitude occur already at a distance of about 40km while in S2, the distance is similar as in S1 (due to the same underlying land-cover), but the magnitude of the emission is smaller than in S1 (due to the “dilution” effect of the larger regions over which tree species are defined).

Northwest Africa is only covered by S1, where a clear distinction between Tunisia (mostly evergreen trees – predominantly *Quercus suber*) and Algeria (mixed forests of *Quercus ilex* (evergreen broad-leaved trees) and conifers of the genus *Pinus* sp.) is seen in the inventory, which is consistent with literature (Merlo and Croitoru, 2005). Since average June temperatures in Northwest Africa are between 27 °C and 30 °C (Fig. S7), the high standard emission potentials (Fig. 5) are reflected in high emissions in June 2006 (Fig. 7) with high emissions of OVOC, MT and ISOP.

The forests in *Central Europe* are dominated by *Quercus* sp. and *Fagus sylvatica*, followed by *Pinus sylvestris* and *Picea abies*. The strongest differences between the inventories are in ISOP, where S1 emits 19 % more than S2 (mostly due to the density of *Quercus* sp.) and in MT, where S3 emits 8 % more than S1 (mostly due to a higher density of *Pinus sylvestris*).

The *Iberian Peninsula* has total BVOC emissions close to central Europe in all inventories due to the relatively high temperatures and the presence of important emitters. Comparing the areas of these it follows that the average annual BVOC emissions are about a factor of 1.8 higher in the Iberian Peninsula ($2.8\text{t m}^{-2}\text{ a}^{-1}$) than in Central Europe ($1.6\text{t m}^{-2}\text{ a}^{-1}$), indicating the need for research on detailed BVOC emission assessments on the Iberian Peninsula. The tree vegetation of this region differs

A novel approach to emission modelling of biogenic volatile organic compounds

D. C. Oderbolz et al.

Title Page

Abstract

Introduction

Conclusions

References

Tables

Figures



Back

Close

Full Screen / Esc

Printer-friendly Version

Interactive Discussion



significantly from other regions in Europe because of common evergreen broad-leaved species such as *Eucalyptus* sp. or *Quercus ilex*. *Eucalyptus* sp. is a strong ISOP and a rather strong emitter of MT, while *Quercus ilex* is a weak ISOP but a strong emitter of MT (see also Table S3). The emission pattern is comparable in S1 and S3, with generally (except for OVOC) higher and more concentrated emissions in S3. In S2, the country-wise approach leads to a smearing of the species – both Spain and Portugal show a uniform (but distinct) colour in the false colour image.

In the *Balkan Peninsula*, many countries are not common to all inventories, so it is difficult to compare the tree distribution. In the following discussion, we refer to the countries for which all inventories provide data (Bulgaria, Croatia, Greece, Romania, Slovenia). In all inventories, agriculture and grass are predicted to be important land-cover categories in this region. The annual emissions are similar for all inventories, except that S3 predicts 41 % less OVOC, 35 % less MT and 21 % less SQT than S1.

Most of *Scandinavia* is dominated by a boreal climate and hence shows the typical vegetation mostly with conifers and birches (*Betula* sp.). Most notably, *Betula pendula* shows high emissions of SQT with an emission factor that is 20 times higher than the default factor (Hakola et al., 2001; Steinbrecher et al., 2009). The conifers are important MT emitters, a feature that is clearly visible in the standard emission potential of inventory S3 (Fig. 5). In S1, the emissions of SQT are the most prominent feature of this region, while in S2, neither MT nor SQT are predicted to be very important.

Italy shows diverse ecologic habitats with alpine and temperate character in the north and mediterranean character in the south. Such a country is difficult to describe in terms of S2, where all the forests of a country have the same composition, especially since the data given in Simpson et al. (1999) shows 58 % of uncategorised trees. In such a case, the resulting emissions critically depend on the parameters given to this category (refer to the end of Table S3 for this data). In all inventories, agriculture is predicted to be an important land-cover category for Italy (24 % in S1 and S2, 8 % in S3). Here, the differences between the inventories are largest for ISOP with S2 predicting 48 % less than S1 and S3 35 % less than S1.

A novel approach to emission modelling of biogenic volatile organic compounds

D. C. Oderbolz et al.

Title Page

Abstract

Introduction

Conclusions

References

Tables

Figures

⏪

⏩

◀

▶

Back

Close

Full Screen / Esc

Printer-friendly Version

Interactive Discussion



3.2 Seasonal and daily variation of BVOC emissions

The *yearly cycle* of the emissions shows a characteristic sinusoidal behaviour (Figs. S8 and S9) which is governed mostly by irradiance and temperature. Without any seasonal correction (Fig. S10) the same pattern is present. The highest emissions occur in July, lowest in January–February for all three tree inventories. A large proportion of the difference between the monthly emission totals of three inventories in Fig. S9 can be explained by the difference in number of countries included in each vegetation inventory. When interpreting Fig. S8, however, we must consider that even if the totals are similar, the spatial distributions of the emissions predicted differ strongly.

When only the *seasonality of the biomass* is taken into account, annual OVOC emissions are reduced by –31 to –32%, MT by –25 to –30%, SQT by –20 to –28% and is reduced by –19 to –24%. When in addition *seasonality of enzymatic activity* is taken into account, ISOP emissions are almost completely suppressed in the months January to March and October to December (Fig. S11). Also, the emissions of MT decrease slightly stronger than with seasonality of the biomass alone: ISOP is reduced by –44 to –49% and MT by –30 and –35%.

If we compare the *spatial distribution* of the emissions in June (Fig. 7) and January (Fig. S6), it is quite similar for both months, except that in winter, emissions at latitudes higher than about 64°N drop markedly because of the increasing importance of *Betula* sp. which is deciduous and hence produces no emissions in winter. It has to be noted that the total amount of emitted BVOC in January is about a factor of 30 less than in June.

In terms of the *total emissions for summer and winter* (see Table 6), ISOP is most strongly reduced in winter by a factor of 65–100 due to the fact that most emitters are deciduous (no leaves in winter) and ISOP emissions are both light and temperature dependent. The difference between summer and winter emissions for other compounds is much lower (about a factor of 15–20) because they are mostly temperature dependent pool emissions from evergreen vegetation. For ISOP, the dominance of the emissions

A novel approach to emission modelling of biogenic volatile organic compounds

D. C. Oderbolz et al.

Title Page

Abstract

Introduction

Conclusions

References

Tables

Figures



Back

Close

Full Screen / Esc

Printer-friendly Version

Interactive Discussion



in the south over the emissions in the north is more pronounced in January than in June. This can be explained with the much steeper latitudinal gradient of PAR in winter. In June, the average PAR level in southern Sweden is around $610 \mu\text{mol m}^{-2} \text{s}^{-1}$ while in southern Spain it is about $720 \mu\text{mol m}^{-2} \text{s}^{-1}$ (factor of 1.18 higher). In January, average PAR levels are $50 \mu\text{mol m}^{-2} \text{s}^{-1}$ and $230 \mu\text{mol m}^{-2} \text{s}^{-1}$ for southern Sweden and southern Spain (factor of 4.6 higher), respectively.

For all compounds except ISOP, it is remarkable that Scotland as well as Northern Ireland are important emission regions in January in S1 and S2. We attribute this to the presence of the evergreen *Picea sitchensis* with its high basal emission rates. In S2, Austria is more pronounced as a MT emitting region in winter. For SQT, especially for S1 and S3, the dominance of the Northern countries is more pronounced in January than in June because in summer, the southern countries can compensate lower forest density with higher temperatures. The OVOC difference between summer and winter is dependent on the inventory. In S3, the distribution in summer and winter is similar. In S1, the Iberian Peninsula, Scotland, Southern and Eastern France as well as Western Germany are more important (in relative terms) in winter than in summer. In S2, a similar effect is observed.

In order to compare the *diurnal cycle in the six climatic zones* for June 2006, we again apply the concept of the “common countries” (which are represented in all three inventories) because otherwise, the scales might differ strongly due to missing data. First of all, the zonal diurnal cycles of temperature and PAR (Fig. S12) show that the temporal behaviour is dependent on the zone. The maxima of both temperature and PAR have the same order of magnitude for all zones, except that the zone “Polar” experiences higher levels of PAR than “Cold with cold summer” while for the temperatures the opposite is true. This can be explained with the elevated location of the “Polar” regions, which leads to cooler climate but is often located above the cloud cover. The peaks of radiation are sharper than for temperature because of the accumulation of heat during the day. This is also the reason for the fact that the time of the maximum is later in temperature than in PAR. The strongest diurnal amplitude of ISOP (Fig. S13) is

A novel approach to emission modelling of biogenic volatile organic compounds

D. C. Oderbolz et al.

Title Page

Abstract

Introduction

Conclusions

References

Tables

Figures

⏪

⏩

◀

▶

Back

Close

Full Screen / Esc

Printer-friendly Version

Interactive Discussion



A novel approach to emission modelling of biogenic volatile organic compounds

D. C. Oderbolz et al.

Title Page

Abstract

Introduction

Conclusions

References

Tables

Figures



Back

Close

Full Screen / Esc

Printer-friendly Version

Interactive Discussion



observed for the “temperate dry summer” zone. The general shape of the diurnal cycle is similar in all zones for all inventories. In contrast to all other compounds, ISOP emissions are zero during night hours because of its strong dependence on PAR. If there is no light available, there can be no photosynthesis and hence no isoprene emission (Fig. 2). The same is the case for the synthesis fraction of the MT, but the pool emissions of MT persist in the dark. The time of the maximum of the ISOP emissions seems to be almost independent of the zone or the inventory and is reached at 12:00 UTC. For MT, the diurnal cycles are slightly broader than the cycles of ISOP (Fig. S14). This can be explained by the lower sensitivity of MT emissions to PAR and temperatures being high enough for significant emissions at dusk and dawn. Also, two distinct maxima are visible, the earlier one corresponding to the peak of PAR and the later corresponding to the peak of temperature. To some extent, this behaviour is also visible in the diurnal cycle of ISOP, but there, the temperature peak is less pronounced. In both S1 and S3, the “arid” and “temperate with dry summer” zones are clearly higher than the other zones, in S2, “temperate with dry summer” is the zone with highest emissions of MT. In the case of SQT (Fig. S15), both cold zones produce higher average emissions than the other zones for all inventories. This is mostly due to the fact that birches *Betula* sp., which are strong emitters of SQT are important trees in these climatic zones. Here, the peaks are even broader than for MT. Maximum emissions for all compounds in S2 are lower than in the other inventories, except for OVOC which looks similar in all three inventories (Fig. S16).

3.3 Sensitivity of BVOC emissions to temperature and land-cover

We tested the sensitivity of the emissions to temperature by running the model for January and June 2006 with air temperatures increased and decreased by 3K (Fig. 8). The response was very similar for all inventories, therefore only the results for S1 are discussed here.

As expected, the increase of emissions when temperatures are higher is stronger than the decrease when temperature is lowered by the same amount for both January

and June. ISOP shows the strongest difference of response to temperature increase between summer and winter: while in January, ISOP emissions increase 60 %, the increase is only 40 % in June. This can be explained by the fact that higher temperatures in winter allow to compensate for less light, while in summer, the emissions saturate.

5 The differences between the species are considerable: ISOP shows the strongest response because the environmental correction function γ_S of the synthesis species is steeper at temperatures below 30 °C (see Fig. 1) than for the other compounds. MT follow because of the synthesis part which are controlled by the same environmental correction function as ISOP. At the lower end of the scale are SQT and OVOC, which
10 show the same factor because their environmental correction function γ_P is less steep in this temperature range.

The temperature sensitivity of BVOC emissions depends on the climatic zone, which is not the case for SQT and OVOC (Table S9). In January, the ISOP emissions in the zone “Cold except summer” are most sensitive to temperature (−35 %; +64 %) and the
15 MT emission in zone “arid” react strongest (−24 % ; +41 %). In June, the most sensitive zone is “polar” both for ISOP (−32 % ; +45 %) as well as for MT (−28 %; +39 %).

There is some uncertainty in the derivation of tree-cover from the land-cover inventory because of the categorical nature of the land-cover data. Each pixel either represents a certain class or not. Typical categories include “Closed (>40 %) broadleaved
20 deciduous forest (>5 m)”, which does not imply 100 % coverage (a full list of forest categories is given in Table S5). We tested the influence of the land-cover correction factors (see Eq. 7) and chose minimal (in the case above 40 % broadleaved deciduous), average (70 %) and maximal values (100%). The average values were used for the calculation of all emission data presented here, the other cases are just to determine the sensitivity to this factor in January and June 2006. For June 2006, total
25 monthly BVOC emissions decreased up to −27 % with minimal and increased up to +71 % with maximal factors, while in January 2006, the changes in monthly BVOC emissions were −54 % and +56 % with minimal and maximal factors, respectively. The

A novel approach to emission modelling of biogenic volatile organic compounds

D. C. Oderbolz et al.

[Title Page](#)[Abstract](#)[Introduction](#)[Conclusions](#)[References](#)[Tables](#)[Figures](#)[⏪](#)[⏩](#)[◀](#)[▶](#)[Back](#)[Close](#)[Full Screen / Esc](#)[Printer-friendly Version](#)[Interactive Discussion](#)

strongest decrease is in ISOP of S2 in June with -60% , the strongest increase is in SQT of S2 in June with $+96\%$. Table S10 shows all the relative changes obtained.

We also tested the influence of the underlying land-cover inventory used when constructing S1 and S2. We applied the widely used USGS GLCC land-cover inventory (as delivered with WRF 3.2.1) as well as the GLC2000 data set (which was originally used to construct the (Skjøth et al., 2008a) data set). For both cases, the factors f_c for S1 (Eq. 7) were simply set to 1.0 for pure conifer or broad-leaved forests and to 0.5 for mixed forests. For S2, f_c was always 1.0. This choice of factors leads to an overestimation in the case of GLC2000, because grid cells which are partly covered by a certain vegetation type, appear as fully covered in the emission model.

For both vegetation inventories, we observed substantial differences when changing the land-cover inventory (see Figs. 17 and S18 for S1 and S2, respectively). In the case of S1, the annual emissions of all compounds are reduced when USGS GLCC is used instead of Globcover 2.2. The reduction of the annual emissions is strongest for ISOP (-49%), followed by SQT (-41%), MT (-32%) and finally OVOC (-12%). This is an indication that the total forest area is smaller in USGS GLCC, but also that the locations of the forests in the USGS GLCC data set is not in line with the regions defined by Skjøth et al. (2008a). USGS GLCC clearly contains less broad-leaved trees, which affects ISOP strongly. Figure S19 shows the tree distribution of the USGS GLCC and GLC2000 land-cover inventories. If GLC2000 is used instead to construct S1, all compounds, except ISOP increase: OVOC $+13\%$, MT $+6\%$ and SQT $+3\%$. ISOP, however is reduced by 40% .

Inventory S2 is less prone to differences in forest position because the regions on which the vegetation types are defined are large. When using USGS GLCC instead of Globcover 2.2, the annual emissions of all compounds are also reduced: ISOP -41% , MT -24% , OVOC -12% and SQT -11% . When using GLC2000 instead all but ISOP increase: SQT $+41\%$, OVOC $+29\%$ and MT $+27\%$. Annual ISOP is reduced as in the case of S1 but only by -4% .

A novel approach to emission modelling of biogenic volatile organic compounds

D. C. Oderbolz et al.

Title Page

Abstract

Introduction

Conclusions

References

Tables

Figures



Back

Close

Full Screen / Esc

Printer-friendly Version

Interactive Discussion



This is an indication that the position of the forests does not agree among the three land-cover inventories USGS GLCC, GLC2000 and Globcover 2.2 and therefore that the choice of land-cover that is used will affect the modelling results.

3.4 Comparison of measured and modelled BVOC concentrations

5 In this study we compare our data with measurements at Hohenpeissenberg in Germany by DWD, which is part of the global atmosphere watch programme (GAW) (<http://www.wmo.int/gaw/>). This station is on a small hill (about 300m above the surrounding countryside) at an elevation of about 980 m a.s.l.. This leads to a partial decoupling of the station with ground air, especially at night and in winter. Concentrations of BVOC were simulated using CAMx air quality model. For all three inventories both approaches to seasonality were considered (in S1–S3 only the biomass seasonality is included while S1e–S3e additionally includes enzyme seasonality). To perform the comparison, the lowest model layer (680 m a.s.l.) of the cell containing the station of Hohenpeissenberg was extracted. The area of this cell is about 260 km². Even though the difference in altitude is small, Hohenpeissenberg is probably not representative for this large area – we expect the concentrations to be lower at Hohenpeissenberg, especially when the station is above an inversion layer unless there is an influence of transport from high areas with high emissions.

15 In an inter-comparison of VOC measurements of GAW (Rappenglück et al., 2006), the deviation of the ISOP measurements at Hohenpeissenberg from the reference value was found to be 1.4 % and –1.2 % for the two instruments. The accuracy of the measurement of MT was not investigated in that study, so we cannot assess the data quality for these compounds. There were two GC-MS/FID measurements per day (01:00 and 13:00 CET) with a sampling time of 20 min (Plass-Dülmer et al., 2002; Plass-Dülmer and Berresheim, 2006), resulting in 62 measurement points in January and 60 in June 2006. We use the measurements of ISOP and the sum of the measurements of α/β -pinene, camphene, sabinene, myrcene, α -phellandrene, carene and cymene (see Table S1 for structure and life-time information). In CAMx, the reaction rates of MT are

A novel approach to emission modelling of biogenic volatile organic compounds

D. C. Oderbolz et al.

Title Page

Abstract

Introduction

Conclusions

References

Tables

Figures

⏪

⏩

◀

▶

Back

Close

Full Screen / Esc

Printer-friendly Version

Interactive Discussion



the same as for α -pinene, because this is thought to be the major MT emitted by plants (according to Steinbrecher et al. (2009), α -pinene is the major MT emitted, however with an average fraction of only 29%). α -Pinene is one of the most long-lived MT with OH among the ones measured at Hohenpeissenberg (Table S1), but has a medium life-time with O₃ or NO₃. Long-lived species such as cymene show almost constant concentrations both at day and at night in Hohenpeissenberg.

In general, the observed concentrations around noon are higher than simulated ones. The predicted peak concentrations are at around 07:00 p.m., which is due to the dynamics of the mixing layer height in the model, associated with a decline of OH and still low concentrations of NO₃. From the available measurement data we cannot infer where the daily maximum is in reality, however, this type of diurnal cycle is consistent with literature data, Handisides et al. (e.g. 2003), which found the daily maximum of α - and β -pinene at 06:00 p.m. using measurement-intervals of two hours. Also consistent with this study is the fact that our daily maximum of ISOP occurs earlier, resulting from an earlier emission maximum of this compound as well as its higher reactivity compared to MT.

A comparison of the measured distribution with modelled data is shown in Fig. 9. The agreement of all inventories with measurements is better in June than in January. The average values (indicated by a cross in the box-plots of Fig. 9) of the observations are captured best by S1 for all cases except for MT in June where S1e predicts the average value better. The agreement of S1 with the observed average is particularly good for ISOP in both seasons as well as for MT in summer. In winter, all scenarios clearly underestimate MT and ISOP, which is an indication that the seasonal correction might be too strong in winter. To assess the model performance, we use the root mean square error and its coefficient of variation and the correlation coefficient (refer to Sect. S2 of the Supplement for details). In summer, the coefficient of variation of the root-mean-square error CV(RSME) for ISOP is between 1.06 and 1.22, for MT between 0.95 and 1.12. Model performance in terms of CV(RSME) in winter is worse than in summer, ranging between 1.76 and 1.95 for ISOP and between 1.16 and 1.25

A novel approach to emission modelling of biogenic volatile organic compounds

D. C. Oderbolz et al.

Title Page

Abstract

Introduction

Conclusions

References

Tables

Figures

⏪

⏩

◀

▶

Back

Close

Full Screen / Esc

Printer-friendly Version

Interactive Discussion



A novel approach to emission modelling of biogenic volatile organic compounds

D. C. Oderbolz et al.

Title Page

Abstract

Introduction

Conclusions

References

Tables

Figures



Back

Close

Full Screen / Esc

Printer-friendly Version

Interactive Discussion

for MT, which can partly be explained with increased anthropogenic influence on BVOC compounds in winter air. The full list of performance measures are given in Table S11. We compiled the model performance data graphically using Taylor diagrams (Taylor, 2001) (Fig. S22). When also enzyme seasonality is considered, model performance reacts heterogeneously. In general, the performance indicators do not change strongly, as can be seen in the Taylor diagrams (Fig. S22). However, with the exception of S1e for MT in June, the inclusion of the enzyme seasonality leads to a stronger underestimation of observed values, leading us to conclude that at least for Hohenpeissenberg and surroundings, the effect of the enzyme seasonality is either confounded with the biomass seasonality or otherwise overestimated. It is difficult to decide which vegetation inventory performs best. The Taylor diagrams show that the correlation coefficients of all models are similar for all cases but both the RMS difference between the modelled and observed values and the standard deviations vary between the models. In June, model performance is better for ISOP, while in January, it is better for MT. For ISOP in June, S2 seems to perform best, closely followed by S1 and S3. In January for both compounds the performance is not good, but the models are close to each other. For MT in June, S3 performs best, closely followed by S2. Also, the deviation between the model and the observations is not only due to tree inventories. An important source of uncertainty is the prediction of radiation by WRF and to a lesser extent the prediction of temperature. Also, model assumptions and oversimplification contribute to this difference. In particular for ISOP, anthropogenic sources contribute to atmospheric distributions which are not considered here (Reimann et al., 2000). In winter, ISOP measured at Hohenpeissenberg is strongly correlated to the anthropogenically emitted 1,3-butadiene or 1-pentene (not shown). Especially in winter when lifetimes are longer, we expect regional traffic, residential wood burning and air mass transport from the city of Munich (the distance being about 55 km) to influence Hohenpeissenberg. There are considerable uncertainties in this comparison, which are however difficult to quantify. Factors that contribute to this uncertainty are uncertainties in the input data for the BVOC model, uncertainties in the model of the gas phase chemistry (reaction rates,

degradation pathways), uncertainties in the numerical weather prediction (temperature, radiation, mixing layer height and presence of inversion layers), measurement uncertainties and finally influences on the concentrations that are not modelled here such as anthropogenic contribution to BVOC compounds.

5 From this it is difficult to infer a ranking of the inventories. From a practical point of view it is desirable to use an inventory without gaps, which makes S1 an attractive choice considering also its low values of the coefficient of variation of the root-mean-square error.

4 Conclusions

10 We developed a generalised model for estimating biogenic volatile organic compound emission which allows to compare different tree inventories, emission algorithms and radiation schemes within the canopy. Using this model, we compared three different tree inventories for Europe and found that on continental scale, they produce similar monthly and hence annual totals for isoprene, monoterpenes, sesquiterpenes and oxygenated volatile organic compounds.

15 Even though the inventory with the highest thematic resolution (S3) features more than 110 vegetation types, all inventories agree that the diversity, viewed on a country-by-country basis is not large. This is in line with the findings of the Ministerial Conference on the Protection of Forests in Europe, which suggest that most European forests consist only of two to three major species (Köhl and Rametsteiner, 2007). This could easily lead to the conclusion that a few tree species are enough to determine BVOC emissions in Europe. Our results however show that for the correct regional projection of BVOC emissions, a detailed speciation of the vegetation types is very important because the reference emission factor vary strongly between plants, even within the same genus.

25 The spatial distribution in the calculated BVOC emissions differs substantially. For some countries, such as Hungary or Finland the resulting differences in total BVOC

A novel approach to emission modelling of biogenic volatile organic compounds

D. C. Oderbolz et al.

Title Page

Abstract

Introduction

Conclusions

References

Tables

Figures



Back

Close

Full Screen / Esc

Printer-friendly Version

Interactive Discussion



A novel approach to emission modelling of biogenic volatile organic compounds

D. C. Oderbolz et al.

Title Page

Abstract

Introduction

Conclusions

References

Tables

Figures



Back

Close

Full Screen / Esc

Printer-friendly Version

Interactive Discussion



emissions are factor of two between S1 and S3, although the total emissions over all countries represented in all three inventory types (common countries) are comparable. With the top ten plant types, we are able to explain 80% (OVOC) to 97% (ISOP) of the predicted biogenic VOC emissions. Some tree species, notably *Eucalyptus* sp. can make a significant contribution to BVOC levels even if their coverage seems insignificant. This suggests that including only the most common European tree species in BVOC modelling can add to a substantial bias in some areas. This also implies that forest inventories should not only be designed with an economic focus (wood productivity) but also contain information about species with high emission factors. We could show that the results are sensitive to the factors used to convert land-cover classes to tree types as well as to the land-cover inventory used. This is a topic that needs to be addressed together with the remote sensing community. This problem is not only present for forest areas, but also in urban areas that can contain significant amount of woody vegetation (Konijnendijk, 2005). Fast reacting BVOCs such as sesquiterpenes will affect aerosol formation mainly in the emission area. Here, *Betula* sp. is an exceptional species, because of 20 times higher reference emission factors of sesquiterpenes compared to all other species included in our model.

To assess the impact of urban greening initiatives on air quality and ultimately human health, species with high emission factor require special attention. This topic was treated with respect to aeroallergens for the Copenhagen area (Skjøth et al., 2008b) and studied and discussed numerically for the West Midlands and Glasgow in the UK (McDonald et al., 2007). Overall these studies as well as our studies point towards the need for high resolution (both spatial as well as thematic) vegetation inventories.

Although it is not in the centre of this study, our assumptions lead to the conclusion that the vegetation type “agriculture” contributes significantly to BVOC emissions in Europe. This is in accordance with the study of Karl et al. (2009), where a more detailed inventory of agriculture was used. However, representing this land-cover class properly is difficult because changes in the cultivation patterns influence emission factors, foliar biomass as well as the vegetation density.

A novel approach to emission modelling of biogenic volatile organic compounds

D. C. Oderbolz et al.

Title Page

Abstract

Introduction

Conclusions

References

Tables

Figures



Back

Close

Full Screen / Esc

Printer-friendly Version

Interactive Discussion



The importance of OVOC highlighted by our study may be a way to close the gap between observations and simulations of secondary organic aerosol. The OVOC species assumed here are merely a surrogate for hundreds of species actually found in biogenic emissions (Goldstein and Galbally, 2007), it is well possible that important precursors are yet to be identified. Our results suggests that OVOC is an important class of compounds to be investigated in Europe.

The inventory S1 based on Skjøth et al. (2008a) seems to be the best compromise between spatial and thematic resolution as well as completeness. However, our studies also points towards weaknesses in this inventory. One example is that some areas only have information on the genus level (e.g. *Quercus* sp.) while in other areas this information is available at the species level (e.g. *Quercus ilex* and *Quercus rubra*). The emission potential of isoprene between these oak species varies with a factor of about 300. Tree inventories should therefore focus on delivering information on species level whenever possible.

The question whether enzymatic seasonality should be considered or not could not be answered conclusively. The fact, however, that isoprene emissions are suppressed almost completely up to including march leads us to conclude that these factors are not yet representative for all of Europe, especially in arid regions the early increase in greenness suggests the presence of isoprene emissions in March or even in February.

It is difficult to compare inventories that are not defined over the same countries, especially because regions with strong emissions such as Northwest Africa or Turkey are missing in some inventories. Additionally, there is a lack of long-term BVOC observations in Europe. It would be beneficial if at least isoprene would be measured at more sites than today in order to facilitate BVOC inventory development and validation of the models and their input data in relation to air quality issues.

Supplementary material related to this article is available online at:
[http://www.atmos-chem-phys-discuss.net/12/19921/2012/
acpd-12-19921-2012-supplement.pdf](http://www.atmos-chem-phys-discuss.net/12/19921/2012/acpd-12-19921-2012-supplement.pdf).

A novel approach to emission modelling of biogenic volatile organic compounds

D. C. Oderbolz et al.

Title Page

Abstract

Introduction

Conclusions

References

Tables

Figures

◀

▶

◀

▶

Back

Close

Full Screen / Esc

Printer-friendly Version

Interactive Discussion



Acknowledgements. We are grateful to have received financial support by the Swiss Federal Office of the Environment (FOEN). We thank Renate Köble for giving us access to the vegetation inventory S3. The authors thank ECMWF, MeteoSwiss, FUB, UBA, TNO, INFRAS, METEOTEST, ESA, NASA and USGS for providing various data. David Simpson provided a lot of helpful insights on BVOC. Martin Gysel provided his IGOR-Toolkit for the data analysis and supported this task. We thank Josef Dommen, Arnaud Praplan and Peter Barmet for valuable input on the gas-phase chemistry. Chris Emery, Greg Yarwood and Bonyoung Koo and all active members of the camxusers and the m3user mailing lists gave helpful advice concerning CAMx and visualisation. Some GIS data were taken from Natural Earth (<http://www.naturalearthdata.com/>). Colours are from Cynthia Brewer (<http://www.ColorBrewer.org>). We acknowledge the use of Excel2Latex by Kirill Müller, Andrew Hawryluk, and Joachim Marder which saved us a lot of time by accurately reproducing Excel tables with \LaTeX .

References

- Aksoyoglu, S., Keller, J., Barmpadimos, I., Oderbolz, D., Lanz, V. A., Prévôt, A. S. H., and Baltensperger, U.: Aerosol modelling in Europe with a focus on Switzerland during summer and winter episodes, *Atmos. Chem. Phys.*, 11, 7355–7373, doi:10.5194/acp-11-7355-2011, 2011. 19927
- Andreani-Aksoyoglu, S. and Keller, J.: Estimates of monoterpene and isoprene emissions from the forests in Switzerland, *J. Atmos. Chem.*, 20, 71–87, doi:10.1007/BF01099919, 1995. 19927, 19930
- Andreani-Aksoyoglu, S., Keller, J., Prévôt, A. S. H., Baltensperger, U., and Flemming, J.: Secondary aerosols in Switzerland and northern Italy: Modeling and sensitivity studies for summer 2003, *J. Geophys. Res.*, 113, D06303, doi:10.1029/2007JD009053, 2008. 19927
- Arneth, A. and Niinemets, U.: Induced BVOCs: how to bug our models?, *Trends Plant Sci.*, 15, 118–125, doi:10.1016/j.tplants.2009.12.004, 2010. 19926
- Arneth, A., Schurgers, G., Lathiere, J., Duhl, T., Beerling, D. J., Hewitt, C. N., Martin, M., and Guenther, A.: Global terrestrial isoprene emission models: sensitivity to variability in climate and vegetation, *Atmos. Chem. Phys.*, 11, 8037–8052, doi:10.5194/acp-11-8037-2011, 2011. 19927

A novel approach to emission modelling of biogenic volatile organic compounds

D. C. Oderbolz et al.

[Title Page](#)[Abstract](#)[Introduction](#)[Conclusions](#)[References](#)[Tables](#)[Figures](#)[⏪](#)[⏩](#)[◀](#)[▶](#)[Back](#)[Close](#)[Full Screen / Esc](#)[Printer-friendly Version](#)[Interactive Discussion](#)

- Atkinson, R. and Arey, J.: Gas-phase tropospheric chemistry of biogenic volatile organic compounds: a review, *Atmos. Environ.*, 37, 197–219, doi:10.1016/S1352-2310(03)00391-1, 2003. 19925
- 5 Bäck, J., Aalto, J., Henriksson, M., Hakola, H., He, Q., and Boy, M.: Chemodiversity of a Scots pine stand and implications for terpene air concentrations, *Biogeosciences*, 9, 689–702, doi:10.5194/bg-9-689-2012, 2012. 19925
- Baldocchi, D. D., Hutchison, B. A., Matt, D. R., and McMillen, R. T.: Canopy Radiative Transfer Models for Spherical and Known Leaf Inclination Angle Distributions: A Test in an Oak-Hickory Forest, *J. Appl. Ecol.*, 22, 539–555, 1985. 19935
- 10 Battey, N. H.: Aspects of seasonality, *J. Exp. Bot.*, 51, 1769, doi:10.1093/jexbot/51.352.1769, 2000. 19932
- Boelman, N. T., Stieglitz, M., Rueth, H. M., Sommerkorn, M., Griffin, K. L., Shaver, G. R., and Gamon, J. A.: Response of NDVI, biomass, and ecosystem gas exchange to long-term warming and fertilization in wet sedge tundra, *Oecologia*, 135, 414–421, 2003. 19932
- 15 Bontemps, S., Defourny, P., Bogaert, E. V., Arino, O., Kalogirou, V., and Perez, J. R.: Globcover Products Description and Validation Report, Tech. rep., ESA, 2011. 19936
- Brewer, C. A.: Color Brewer, <http://www.ColorBrewer.org>, last access: 24 November 2011. 19957
- Carlton, A. G., Wiedinmyer, C., and Kroll, J. H.: A review of Secondary Organic Aerosol (SOA) formation from isoprene, *Atmos. Chem. Phys.*, 9, 4987–5005, doi:10.5194/acp-9-4987-2009, 2009 19925
- 20 Carlton, A. G., Pinder, R. W., Bhawe, P. V., and Pouliot, G. A.: To What Extent Can Biogenic SOA be Controlled?, *Environ. Sci. Technol.*, 44, 3376–3380, doi:10.1021/es903506b, 2010. 19926
- 25 Chameides, W. L., Lindsay, R. W., Richardson, J., and Kiang, C. S.: The role of biogenic hydrocarbons in urban photochemical smog: Atlanta as a case study, *Science*, 241, 1473, doi:10.1126/science.3420404, 1988. 19925
- Ciccioli, P., Brancaleoni, E., Frattoni, M., Cecinato, A., and Pinciarelli, L.: Determination of volatile organic compounds (VOC) emitted from biomass burning of mediterranean vegetation species by GC-MS, *Anal. Lett.*, 34, 937–955, doi:10.1081/AL-100103604, 2001. 19926
- 30 Ciccioli, P., Brancaleoni, E., Frattoni, M., Marta, S., Brachetti, A., Vitullo, M., Tirone, G., and Valentini, R.: Relaxed eddy accumulation, a new technique for measuring emission and deposition fluxes of volatile organic compounds by capillary gas chromatography and mass

A novel approach to emission modelling of biogenic volatile organic compounds

D. C. Oderbolz et al.

[Title Page](#)[Abstract](#)[Introduction](#)[Conclusions](#)[References](#)[Tables](#)[Figures](#)[⏪](#)[⏩](#)[◀](#)[▶](#)[Back](#)[Close](#)[Full Screen / Esc](#)[Printer-friendly Version](#)[Interactive Discussion](#)

spectrometry, *J. Chromatogr. A*, 985, 283–296, doi:10.1016/S0021-9673(02)01731-4, 2003. 19934

5 Claeys, M., Graham, B., Vas, G., Wang, W., Vermeylen, R., Pashynska, V., Cafmeyer, J., Guyon, P., Andreae, M. O., Artaxo, P., and Maenhaut, W.: Formation of Secondary Organic Aerosols Through Photooxidation of Isoprene, *Science*, 303, 1173–1176, 2004. 19925

Curci, G., Beekmann, M., Vautard, R., Smiatek, G., Steinbrecher, R., Theloke, J., and Friedrich, R.: Modelling study of the impact of isoprene and terpene biogenic emissions on European ozone levels, *Atmos. Environ.*, 43, 1444–1455, doi:10.1016/j.atmosenv.2008.02.070, 2009. 19925

10 Duhl, T. R., Helmig, D., and Guenther, A.: Sesquiterpene emissions from vegetation: a review, *Biogeosciences*, 5, 761–777, doi:10.5194/bg-5-761-2008, 2008. 19926

ENVIRON: User's Guide, Comprehensive Air Quality Model with Extensions (CAMx). Version 5.30, Tech. rep., ENVIRON International Corporation, Novato, 2010. 19929

15 Evrendilek, F. and Gulbeyaz, O.: Deriving vegetation dynamics of natural terrestrial ecosystems from MODIS NDVI/EVI data over Turkey, *Sensors*, 8, 5270–5302, doi:10.3390/s8095270, 2008. 19933

Goldstein, A. H. and Galbally, I. E.: Known and Unexplored Organic Constituents in the Earth's Atmosphere, *Environ. Sci. Technol.*, 41, 1514–1521, doi:10.1021/es072476p, 2007. 19956

20 Guenther, A.: Seasonal and spatial variations in natural volatile organic compound emissions, *Ecol. Appl.*, 7, 34–45, 1997. 19925, 19930, 19931

Guenther, A., Hewitt, C. N., Erickson, D., Fall, R., Geron, C., Graedel, T., Harley, P., Klinger, L., and Lerdau, M.: A global model of natural volatile organic compound emissions, *J. Geophys. Res.-Atmos.*, 100, 8873–8892, 1995. 19925, 19928, 19930

25 Guenther, A., Karl, T., Harley, P., Wiedinmyer, C., Palmer, P. I., and Geron, C.: Estimates of global terrestrial isoprene emissions using MEGAN (Model of Emissions of Gases and Aerosols from Nature), *Atmos. Chem. Phys.*, 6, 3181–3210, doi:10.5194/acp-6-3181-2006, 2006. 19925, 19926, 19928

Guenther, A. B., Zimmerman, P. R., Harley, P. C., Monson, R. K., and Fall, R.: Isoprene and Monoterpene Emission Rate Variability: Model Evaluations and Sensitivity Analyses, *J. Geophys. Res.*, 98, 12609–12617, doi:10.1029/93JD00527, 1993. 19925

30 Hakola, H., Laurila, T., Lindfors, V., Hellén, H., Gaman, A., and Rinne, J.: Variation of the VOC emission rates of birch species during the growing season, *Boreal Environ. Res.*, 6, 237–249, 2001. 19944

A novel approach to emission modelling of biogenic volatile organic compounds

D. C. Oderbolz et al.

Title Page

Abstract

Introduction

Conclusions

References

Tables

Figures

⏪

⏩

◀

▶

Back

Close

Full Screen / Esc

Printer-friendly Version

Interactive Discussion



Hakola, H., Tarvainen, V., Bäck, J., Ranta, H., Bonn, B., Rinne, J., and Kulmala, M.: Seasonal variation of mono- and sesquiterpene emission rates of Scots pine, *Biogeosciences*, 3, 93–101, doi:10.5194/bg-3-93-2006, 2006. 19928

Hallquist, M., Wenger, J. C., Baltensperger, U., Rudich, Y., Simpson, D., Claeys, M., Dommen, J., Donahue, N. M., George, C., Goldstein, A. H., Hamilton, J. F., Herrmann, H., Hoffmann, T., Iinuma, Y., Jang, M., Jenkin, M. E., Jimenez, J. L., Kiendler-Scharr, A., Maenhaut, W., McFiggans, G., Mentel, Th. F., Monod, A., Prévôt, A. S. H., Seinfeld, J. H., Surratt, J. D., Szmigielski, R., and Wildt, J.: The formation, properties and impact of secondary organic aerosol: current and emerging issues, *Atmos. Chem. Phys.*, 9, 5155–5236, doi:10.5194/acp-9-5155-2009, 2009. 19925

Handisides, G. M., Plass-Dülmer, C., Gilge, S., Bingemer, H., and Berresheim, H.: Hohenpeissenberg Photochemical Experiment (HOPE 2000): Measurements and photostationary state calculations of OH and peroxy radicals, *Atmos. Chem. Phys.*, 3, 1565–1588, doi:10.5194/acp-3-1565-2003, 2003. 19952

Hartley, A., Pekel, J.-F., Ledwith, M., Champeaux, J.-L., Badts, E. D., and Bartalev, S. A.: The Land Cover Map for Europe in the Year 2000, <http://bioval.jrc.ec.europa.eu/products/glc2000/glc2000.php>, 2006. 19937

Hickler, T., Vohland, K., Feehan, J., Miller, P. A., Smith, B., Costa, L., Giesecke, T., Fronzek, S., Carter, T. R., and Cramer, W.: Projecting the future distribution of European potential natural vegetation zones with a generalized, tree species-based dynamic vegetation model, *Global Ecol. Biogeogr.*, 21, 50–63, doi:10.1111/j.1466-8238.2010.00613.x, 2012. 19932

Hodzic, A., Jimenez, J. L., Madronich, S., Aiken, A. C., Bessagnet, B., Curci, G., Fast, J., Lamarque, J.-F., Onasch, T. B., Roux, G., Schauer, J. J., Stone, E. A., and Ulbrich, I. M.: Modeling organic aerosols during MILAGRO: importance of biogenic secondary organic aerosols, *Atmos. Chem. Phys.*, 9, 6949–6981, doi:10.5194/acp-9-6949-2009, 2009. 19925

Huete, A., Justice, C., and van Leeuwen, W.: MODIS vegetation index (MOD13) algorithm theoretical basis document, Tech. rep., NASA, 1999. 19932, 19933

Ingemarsson, R., Nilsson, U., Nilsson, M., Pedersen, J. R., and Olsson, J. O.: Slow pyrolysis of spruce and pine samples studied with GC/MS and GC/FTIR/FID, *The Chemosphere*, 36, 2879–2889, doi:10.1016/S0045-6535(97)10245-4, 1998. 19926

Janjic, Z. I.: The step-mountain eta coordinate model: Further developments of the convection, viscous sublayer, and turbulence closure schemes, *Mon. Weather Rev.*, 122, 927–945, 1994. 19929

A novel approach to emission modelling of biogenic volatile organic compounds

D. C. Oderbolz et al.

Title Page

Abstract

Introduction

Conclusions

References

Tables

Figures

◀

▶

◀

▶

Back

Close

Full Screen / Esc

Printer-friendly Version

Interactive Discussion



Jimenez, J. L., Canagaratna, M. R., Donahue, N. M., Prevot, A. S. H., Zhang, Q., Kroll, J. H., DeCarlo, P. F., Allan, J. D., Coe, H., Ng, N. L., Aiken, A. C., Docherty, K. S., Ulbrich, I. M., Grieshop, A. P., Robinson, A. L., Duplissy, J., Smith, J. D., Wilson, K. R., Lanz, V. A., Hueglin, C., Sun, Y. L., Tian, J., Laaksonen, A., Raatikainen, T., Rautiainen, J., Vaattovaara, P., Ehn, M., Kulmala, M., Tomlinson, J. M., Collins, D. R., Cubison, M. J., E, Dunlea, J., Huffman, J. A., Onasch, T. B., Alfarra, M. R., Williams, P. I., Bower, K., Kondo, Y., Schneider, J., Drewnick, F., Borrmann, S., Weimer, S., Demerjian, K., Salcedo, D., Cottrell, L., Griffin, R., Takami, A., Miyoshi, T., Hatakeyama, S., Shimono, A., Sun, J. Y., Zhang, Y. M., Dzepina, K., Kimmel, J. R., Sueper, D., Jayne, J. T., Herndon, S. C., Trimborn, A. M., Williams, L. R., Wood, E. C., Middlebrook, A. M., Kolb, C. E., Baltensperger, U., and Worsnop, D. R.: Evolution of Organic Aerosols in the Atmosphere, *Science*, 326, 1525–1529, doi:10.1126/science.1092805, 2009. 19926

Kanakidou, M., Tsigaridis, K., Dentener, F. J., and Crutzen, P. J.: Human-activity-enhanced formation of organic aerosols by biogenic hydrocarbon oxidation, *J. Geophys. Res.*, 105, 9243–9354, doi:10.1029/1999JD901148, 2000. 19925

Karl, M., Guenther, A., Köble, R., Leip, A., and Seufert, G.: A new European plant-specific emission inventory of biogenic volatile organic compounds for use in atmospheric transport models, *Biogeosciences*, 6, 1059–1087, doi:10.5194/bg-6-1059-2009, 2009 19925, 19945, 19955, 19976

Karlsen, S. R., Ramfjord, H., Høgda, K. A., Johansen, B., Danks, F. S., and Brobak, T. E.: A satellite-based map of onset of birch (*Betula*) flowering in Norway, *Aerobiologia*, 25, 15–25, doi:10.1007/s10453-008-9105-3, 2009. 19932

Keenan, T., Niinemets, Ü., Sabate, S., Gracia, C., and Peñuelas, J.: Process based inventory of isoprenoid emissions from European forests: model comparisons, current knowledge and uncertainties, *Atmos. Chem. Phys.*, 9, 4053–4076, doi:10.5194/acp-9-4053-2009, 2009. 19926

Keller, J., Andreani-Aksoyoglu, S., and Joss, U.: Inventory of natural emissions in Switzerland, *Air Pollution III*, 2, 339–346, 1995. 19927, 19930

Kniezys, F. X., Shettle, E. P., Abreu, L. W., Chetwynd, J. H., Anderson, G. P., Gallery, W. O., Selby, J. E. A., and Clough, S. A.: User guide to LOWTRAN 7, Tech. rep., Air Force Geophysics Laboratory, Hanscom AFB, MA, 1988. 19935

A novel approach to emission modelling of biogenic volatile organic compounds

D. C. Oderbolz et al.

Title Page

Abstract

Introduction

Conclusions

References

Tables

Figures

⏪

⏩

◀

▶

Back

Close

Full Screen / Esc

Printer-friendly Version

Interactive Discussion



Peel, M. C., Finlayson, B. L., and McMahon, T. A.: Updated world map of the Köppen-Geiger climate classification, *Hydrol. Earth Syst. Sci.*, 11, 1633–1644, doi:10.5194/hess-11-1633-2007, 2007. 19933

Plass-Dülmer, C. and Berresheim, H.: Volatile organic compound measurements at Hohenpeissenberg as part of GAW, in: *The German contribution to the WMO GAW programme: upon the 225th anniversary of GAW Hohenpeissenberg observatory*, edited by: Fricke, W., Barrie, L. A., and Schleyer, R., 167, 59–63, 2006. 19951

Plass-Dülmer, C., Michl, K., Ruf, R., and Berresheim, H.: C2-C8 Hydrocarbon measurement and quality control procedures at the Global Atmosphere Watch Observatory Hohenpeissenberg, *J. Chromatogr. A*, 953, 175–197, doi:10.1016/S0021-9673(02)00128-0, 2002. 19951

Rappenglück, B., Apel, E., Bauerfeind, M., Bottenheim, J., Brickell, P., Cavolka, P., Cech, J., Gatti, L., Hakola, H., Honzak, J., Junek, R., Martin, D., Noone, C., Plass-Dülmer, C., Travers, D., and Wang, D.: The first VOC intercomparison exercise within the Global Atmosphere Watch (GAW), *Atmos. Environ.*, 40, 7508–7527, doi:10.1016/j.atmosenv.2006.07.016, 2006. 19951

Rasmussen, L. E. L. and Perrin, T. E.: Physiological Correlates of Musth: Lipid Metabolites and Chemical Composition of Exudates, *Physiol. Behav.*, 67, 539–549, doi:10.1016/S0031-9384(99)00114-6, 1999. 19926

Reimann, S., Calanca, P., and Hofer, P.: The anthropogenic contribution to isoprene concentrations in a rural atmosphere, *Atmos. Environ.*, 34, 109–115, doi:10.1016/S1352-2310(99)00285-X, 2000. 19926, 19953

Ross, I. U.: *The radiation regime and architecture of plant stands*, Vol. 3, Springer, 1981. 19934

Rouvière, A., Brulfert, G., Baussand, P., and Chollet, J.-P.: Monoterpene source emissions from Chamonix in the Alpine Valleys, *Atmos. Environ.*, 40, 3613–3620, doi:10.1016/j.atmosenv.2005.09.058, 2006. 19926

Salerno-Kennedy, R. and Cashman, K. D.: Potential applications of breath isoprene as a biomarker in modern medicine: a concise overview, *Wiener Klin. Wochenschr.*, 117, 180–186, doi:10.1007/s00508-005-0336-9, 2005. 19926

Schmidt, H.: Kronen- und Zuwachsuntersuchungen an Fichten des bayerischen Alpenvorlandes, *Forstwiss. Centralbl.*, 72, 276–286, doi:10.1007/BF01819340, 1953. 19932

A novel approach to emission modelling of biogenic volatile organic compounds

D. C. Oderbolz et al.

Title Page

Abstract

Introduction

Conclusions

References

Tables

Figures

⏪

⏩

◀

▶

Back

Close

Full Screen / Esc

Printer-friendly Version

Interactive Discussion



Schnitzler, J. P., Lehning, A., and Steinbrecher, R.: Seasonal pattern of isoprene synthase activity in *Quercus robur* leaves and its significance for modeling isoprene emission rates, *Bot. Acta*, 110, 240–243, 1997. 19926, 19933

Schönwitz, R., Merk, L., and Ziegler, H.: Naturally occurring monoterpenoids in needles of *Picea abies* (L.) Karst, *Trees-Struct. Funct.*, 1, 88–93, doi:10.1007/BF00203576, 1987. 19932

Simpson, D., Winiwarter, W., Börjesson, G., Cinderby, S., Ferreira, A., Guenther, A., Hewitt, C. N., Janson, R., Khalil, M. A. K., and Owen, S.: Inventorying emissions from nature in Europe, *J. Geophys. Res.*, 104, 8113–8152, doi:10.1029/98JD02747, 1999. 19927, 19935, 19937, 19938, 19939, 19944, 19945, 19976

Simpson, D., Benedictow, A., Berge, H., Bergström, R., Emberson, L. D., Fagerli, H., Hayman, G. D., Gauss, M., Jonson, J. E., Jenkin, M. E., Nyíri, A., Richter, C., Semeena, V. S., Tsyro, S., Tuovinen, J.-P., Valdebenito, Á., and Wind, P.: The EMEP MSC-W chemical transport model – Part 1: Model description, *Atmos. Chem. Phys. Discuss.*, 12, 3781–3874, doi:10.5194/acpd-12-3781-2012, 2012. 19925

Skjøth, C. A., Geels, C., Hvidberg, M., Hertel, O., Brandt, J., Frohn, L. M., Hansen, K. M., Hedegaard, G. B., Christensen, J. H., and Moseholm, L.: An inventory of tree species in Europe – An essential data input for air pollution modelling, *Ecol. Modell.*, 217, 292–304, doi:10.1016/j.ecolmodel.2008.06.023, 2008a. 19927, 19935, 19937, 19938, 19945, 19950, 19956

Skjøth, C. A., Sommer, J., Brandt, J., Hvidberg, M., Geels, C., Hansen, K. M., Hertel, O., Frohn, L. M., and Christensen, J. H.: Copenhagen – a significant source of birch (*Betula*) pollen?, *I. J. Biometeorol.*, 52, 453–462, doi:10.1007/s00484-007-0139-y, 2008b. 19955

Smiatek, G. and Steinbrecher, R.: Temporal and spatial variation of forest VOC emissions in Germany in the decade 1994–2003, Regional biogenic emissions of reactive volatile organic compounds (BVOC) from forests: Process studies, modelling and validation experiments (BEWA2000), 40, 166–177, doi:10.1016/j.atmosenv.2005.11.071, 2006. 19930, 19976

Staudt, M., Bertin, N., Frenzel, B., and Seufert, G.: Seasonal Variation in Amount and Composition of Monoterpenes Emitted by Young *Pinus pinea* Trees – Implications for Emission Modeling, *J. Atmos. Chem.*, 35, 77–99, doi:10.1023/A:1006233010748, 2000. 19928, 19934

Steinbrecher, R., Smiatek, G., Köble, R., Seufert, G., Theloke, J., Hauff, K., Ciccioli, P., Vautard, R., and Curci, G.: Intra- and inter-annual variability of VOC emissions from natural and semi-natural vegetation in Europe and neighbouring countries, *Atmos. Environ.*, 43, 1380–1391,

A novel approach to emission modelling of biogenic volatile organic compounds

D. C. Oderbolz et al.

Title Page

Abstract

Introduction

Conclusions

References

Tables

Figures

⏪

⏩

◀

▶

Back

Close

Full Screen / Esc

Printer-friendly Version

Interactive Discussion

doi:10.1016/j.atmosenv.2008.09.072, 2009. 19925, 19926, 19927, 19928, 19931, 19934, 19944, 19952

Stewart, H., Hewitt, C. N., and Bunce, R. G. H.: Assessing, mapping and quantifying the distribution of foliar biomass in Great Britain, *Biomass Bioenerg.*, 32, 838–856, doi:10.1016/j.biombioe.2007.12.015, 2008. 19945

Stewart, H. E., Hewitt, C. N., Bunce, R. G. H., Steinbrecher, R., Smiatek, G., and Schoenemeyer, T.: A highly spatially and temporally resolved inventory for biogenic isoprene and monoterpene emissions: Model description and application to Great Britain, *J. Geophys. Res.*, 108, 7–7, 2003. 19927

Street, R. A., Hewitt, C. N., and Mennicken, S.: Isoprene and monoterpene emissions from a Eucalyptus plantation in Portugal, *J. Geophys. Res.*, 102, 15875–15887, doi:10.1029/97JD00010, 1997. 19926, 19942

Strömvall, A.-M. and Petersson, G.: Conifer monoterpenes emitted to air by logging operations, *Scand. J. Forest Res.*, 6, 253–258, doi:10.1080/02827589109382666, 1991. 19926

Swanson, A. L., Lefer, B. L., Stroud, V., and Atlas, E.: Trace gas emissions through a winter snowpack in the subalpine ecosystem at Niwot Ridge, Colorado, *Geophys. Res. Lett.*, 32, L03805, doi:10.1029/2004GL021809, 2005. 19933

Szidat, S., Jenk, T. M., Synal, H.-A., Kalberer, M., Wacker, L., Hajdas, I., Kasper-Giebl, A., and Baltensperger, U.: Contributions of fossil fuel, biomass-burning, and biogenic emissions to carbonaceous aerosols in Zurich as traced by ^{14}C , *J. Geophys. Res.*, 111, D07206, doi:10.1029/2005JD006590, 2006. 19926

Taylor, K. E.: Summarizing multiple aspects of model performance in a single diagram, *J. Geophys. Res.*, 106, 7183–7192, 2001. 19953

Tucker, C. J.: Red and photographic infrared linear combinations for monitoring vegetation, *Remote Sens. Environ.*, 8, 127–150, doi:10.1016/0034-4257(79)90013-0, 1979. 19932

UN-ECE: International Co-operative Programme on Assessment and Monitoring of Air Pollution Effects on Forests. Manual on methods and criteria for harmonized sampling, assessment, monitoring and analysis of the effects of air pollution on forests, 1998. 19938

Uppala, S. M., Killberg, P. W., Simmons, A. J., Andrae, U., Bechtold, V. D. C., Fiorino, M., Gibson, J. K., Haseler, J., Hernandez, A., and Kelly, G. A.: The ERA-40 re-analysis, *Q. J. Roy. Meteorol. Soc.*, 131, 2961–3012, doi:10.1256/qj.04.176, 2005. 19929

Zimmer, W., Steinbrecher, R., Körner, C., and Schnitzler, J. P.: The process-based SIM-BIM model: towards more realistic prediction of isoprene emissions from adult *Quercus petraea* forest trees, *Atmos. Environ.*, 37, 1665–1671, doi:10.1016/S1352-2310(03)00013-X, 2003. 19926

A novel approach to emission modelling of biogenic volatile organic compounds

D. C. Oderbolz et al.

Title Page

Abstract

Introduction

Conclusions

References

Tables

Figures



Back

Close

Full Screen / Esc

Printer-friendly Version

Interactive Discussion



A novel approach to emission modelling of biogenic volatile organic compounds

D. C. Oderbolz et al.

Title Page

Abstract

Introduction

Conclusions

References

Tables

Figures

◀

▶

◀

▶

Back

Close

Full Screen / Esc

Printer-friendly Version

Interactive Discussion



Table 1. Emission data by country (annual totals in Gg yr⁻¹) and overall totals (at the back). Common countries are marked with *, these are the countries that are contained in all vegetation inventories (S1–S3). Some cells are not assigned to a country, these are mostly shore cells.

Country	S1				S2				S3			
	ISOP	MT	SQT	OVOC	ISOP	MT	SQT	OVOC	ISOP	MT	SQT	OVOC
Albania	16	34	1	54	25	21	1	33	N/A	N/A	N/A	N/A
Algeria	105	125	4	171	13	32	0	80	N/A	N/A	N/A	N/A
Austria*	10	32	3	82	16	91	3	87	8	38	4	104
Belarus*	49	130	18	160	30	306	7	222	17	138	8	116
Belgium*	11	8	1	18	3	20	1	19	10	10	0	21
Bosnia & Herz.	19	46	2	108	37	34	1	51	N/A	N/A	N/A	N/A
Bulgaria*	60	87	3	154	55	105	3	104	75	58	2	78
Croatia*	40	35	2	81	32	31	1	49	28	19	1	41
Czech Republic*	24	42	3	86	11	37	3	94	13	40	3	84
Denmark*	8	12	1	24	3	12	0	22	3	6	0	13
Estonia*	5	17	5	21	3	42	3	31	2	32	2	39
Finland*	8	105	23	104	4	145	9	157	11	230	20	276
France*	226	207	7	369	228	123	5	247	277	275	12	411
Germany*	79	197	9	299	35	149	8	256	36	159	9	294
Greece*	99	74	3	91	78	68	3	88	98	66	3	71
Hungary*	51	46	2	89	52	37	1	72	38	19	1	33
Ireland*	4	43	1	37	3	30	1	35	3	32	0	36
Italy*	201	150	6	254	104	201	5	204	131	127	5	193
Kosovo	3	4	0	9	N/A	N/A	N/A	N/A	N/A	N/A	N/A	N/A
Latvia*	10	27	8	34	9	66	4	53	5	41	4	54
Lithuania*	11	23	4	35	4	33	4	43	4	33	3	38
Luxembourg*	1	1	0	2	1	2	0	2	1	1	0	3
Macedonia	12	13	1	25	18	16	1	24	N/A	N/A	N/A	N/A
Moldova*	21	23	1	40	15	25	1	40	12	1	0	3
Montenegro	3	4	0	10	N/A	N/A	N/A	N/A	N/A	N/A	N/A	N/A
Morocco	6	7	0	11	1	3	0	8	N/A	N/A	N/A	N/A

A novel approach to emission modelling of biogenic volatile organic compounds

D. C. Oderbolz et al.

Title Page

Abstract

Introduction

Conclusions

References

Tables

Figures

⏪

⏩

◀

▶

Back

Close

Full Screen / Esc

Printer-friendly Version

Interactive Discussion



Table 1. Continued.

Country	S1				S2				S3			
	ISOP	MT	SQT	OVOC	ISOP	MT	SQT	OVOC	ISOP	MT	SQT	OVOC
Netherlands*	10	10	1	17	2	13	0	15	9	11	0	20
Norway*	8	31	7	52	5	81	5	61	5	69	9	110
Poland*	66	162	10	225	30	213	8	222	47	209	9	205
Portugal*	115	104	3	81	54	118	2	77	126	147	4	83
Romania*	76	119	5	297	85	136	5	198	55	56	3	163
Russian Fed.	135	294	46	255	113	593	17	459	N/A	N/A	N/A	N/A
Serbia	28	37	2	86	N/A	N/A	N/A	N/A	N/A	N/A	N/A	N/A
Slovakia*	15	16	1	36	12	15	1	38	12	20	1	47
Slovenia*	7	11	1	29	11	10	0	14	5	14	1	34
Spain*	249	637	12	447	117	326	8	325	305	648	12	358
Sweden*	37	120	24	180	9	147	15	223	26	273	26	417
Switzerland*	4	10	1	27	2	9	1	23	3	11	1	30
Tunisia	20	56	1	54	4	11	0	28	N/A	N/A	N/A	N/A
Turkey	391	480	13	445	30	72	0	178	N/A	N/A	N/A	N/A
Ukraine	330	300	14	490	186	308	11	481	N/A	N/A	N/A	N/A
United Kingdom*	18	132	5	123	17	152	3	122	22	91	2	106
Unassigned	60	112	5	121	70	74	6	134	73	93	4	94
Tot. original count.	2650	4124	257	5328	1528	3906	147	4618	1462	2964	150	3571
Tot. common count.	1521	2611	166	3491	1030	2742	111	3142	1389	2871	146	3477

A novel approach to emission modelling of biogenic volatile organic compounds

D. C. Oderbolz et al.

Title Page

Abstract

Introduction

Conclusions

References

Tables

Figures

⏪

⏩

◀

▶

Back

Close

Full Screen / Esc

Printer-friendly Version

Interactive Discussion



Table 2. Top emitters of isoprene (based on annual data, original countries), selected so that at least the ten most important emitters for each inventory is shown. Values in Gg yr⁻¹.

	S1	S2	S3
<i>Quercus</i> sp.	1024 (39 %)	546 (36 %)	N/A
<i>Quercus robur</i>	466 (18 %)	104 (07 %)	281 (22 %)
<i>Populus</i> sp.	278 (10 %)	73 (05 %)	N/A
Agriculture	215 (08 %)	211 (14 %)	38 (03 %)
<i>Quercus pubescens</i>	166 (06 %)	36 (02 %)	174 (14 %)
<i>Quercus petraea</i>	98 (04 %)	53 (03 %)	140 (11 %)
<i>Eucalyptus</i> sp.	86 (03 %)	48 (03 %)	214 (17 %)
<i>Quercus faginea</i>	83 (03 %)	41 (03 %)	52 (04 %)
<i>Other broadleaves</i>	65 (02 %)	91 (06 %)	N/A
Grassland	53 (02 %)	52 (03 %)	30 (02 %)
<i>Picea</i> sp.	34 (01 %)	127 (08 %)	N/A
<i>Picea abies</i>	34 (01 %)	39 (03 %)	58 (05 %)
<i>Quercus frainetto</i>	N/A	N/A	87 (07 %)
<i>Quercus pyrenaica</i>	N/A	N/A	61 (05 %)
Unknown	N/A	79 (05 %)	N/A
Total	2603 (98 %)	1501 (98 %)	1134 (90 %)

A novel approach to emission modelling of biogenic volatile organic compounds

D. C. Oderbolz et al.

Title Page

Abstract

Introduction

Conclusions

References

Tables

Figures

⏪

⏩

◀

▶

Back

Close

Full Screen / Esc

Printer-friendly Version

Interactive Discussion



Table 3. Top emitters of monoterpenes (based on annual data, original countries), selected so that at least the ten most important emitters for each inventory is shown. Values in Gg yr⁻¹.

	S1	S2	S3
<i>Pinus sylvestris</i>	712 (17 %)	725 (19 %)	1145 (40 %)
Agriculture	512 (12 %)	478 (12 %)	96 (03 %)
<i>Pinus</i> sp.	455 (11 %)	722 (18 %)	N/A
<i>Fagus sylvatica</i>	305 (07 %)	N/A	147 (05 %)
<i>Quercus ilex</i>	269 (07 %)	170 (04 %)	368 (13 %)
<i>Quercus</i> sp.	264 (06 %)	134 (03 %)	N/A
<i>Betula</i> sp.	254 (06 %)	39 (<1 %)	N/A
<i>Picea</i> sp.	238 (06 %)	833 (21 %)	N/A
<i>Pinus nigra</i>	179 (04 %)	8 (<1 %)	91 (03 %)
<i>Picea abies</i>	159 (04 %)	177 (05 %)	301 (10 %)
<i>Picea sitchensis</i>	151 (04 %)	120 (03 %)	100 (03 %)
Grassland	143 (03 %)	134 (03 %)	100 (03 %)
<i>Pinus pinaster</i>	40 (<1 %)	53 (01 %)	84 (03 %)
<i>Eucalyptus</i> sp.	27 (<1 %)	15 (<1 %)	72 (02 %)
Unknown	N/A	108 (03 %)	N/A
Total	3707 (90 %)	3714 (95 %)	2502 (86 %)

A novel approach to emission modelling of biogenic volatile organic compounds

D. C. Oderbolz et al.

Title Page

Abstract

Introduction

Conclusions

References

Tables

Figures

⏪

⏩

◀

▶

Back

Close

Full Screen / Esc

Printer-friendly Version

Interactive Discussion



Table 4. Top emitters of sesquiterpenes (based on annual data, original countries), selected so that at least the ten most important emitters for each inventory is shown. Values in Gg yr^{-1} .

	S1	S2	S3
<i>Betula</i> sp.	147 (57 %)	25 (17 %)	N/A
<i>Betula pubescens</i>	N/A	N/A	28 (17 %)
<i>Betula pendula</i>	N/A	N/A	17 (11 %)
<i>Picea abies</i>	20 (08 %)	25 (17 %)	45 (28 %)
<i>Pinus sylvestris</i>	19 (07 %)	22 (15 %)	36 (22 %)
<i>Pinus</i> sp.	9 (04 %)	16 (11 %)	N/A
<i>Quercus</i> sp.	9 (03 %)	5 (04 %)	N/A
<i>Fagus sylvatica</i>	7 (03 %)	N/A	4 (02 %)
<i>Picea</i> sp.	7 (03 %)	26 (18 %)	N/A
Other broadleaves	4 (02 %)	5 (04 %)	N/A
<i>Pinus nigra</i>	4 (02 %)	0 (< 1 %)	2 (01 %)
<i>Pinus halepensis</i>	4 (01 %)	1 (< 1 %)	2 (01 %)
Other conifers	3 (01 %)	3 (02 %)	N/A
<i>Abies alba</i>	2 (< 1 %)	N/A	3 (02 %)
<i>Fagus</i> sp.	2 (< 1 %)	4 (03 %)	N/A
<i>Pinus pinaster</i>	2 (< 1 %)	3 (02 %)	4 (03 %)
<i>Quercus ilex</i>	2 (< 1 %)	1 (< 1 %)	3 (02 %)
Unknown	N/A	3 (02 %)	N/A
Total	240 (94 %)	140 (95 %)	144 (90 %)

A novel approach to emission modelling of biogenic volatile organic compounds

D. C. Oderbolz et al.

Title Page

Abstract

Introduction

Conclusions

References

Tables

Figures

⏪

⏩

◀

▶

Back

Close

Full Screen / Esc

Printer-friendly Version

Interactive Discussion



Table 5. Top emitters of OVOC (based on annual data, original countries), selected so that at least the ten most important emitters for each inventory is shown. Values in Gg yr⁻¹.

	S1	S2	S3
Agriculture	1295 (24 %)	1239 (27 %)	233 (07 %)
<i>Fagus sylvatica</i>	807 (15 %)	N/A	393 (12 %)
<i>Picea abies</i>	552 (10 %)	634 (14 %)	1032 (30 %)
<i>Pinus sylvestris</i>	461 (09 %)	487 (11 %)	723 (21 %)
Grassland	388 (07 %)	372 (08 %)	278 (08 %)
<i>Pinus sp.</i>	221 (04 %)	363 (08 %)	N/A
<i>Quercus sp.</i>	217 (04 %)	115 (02 %)	N/A
<i>Picea sp.</i>	199 (04 %)	715 (15 %)	N/A
<i>Betula sp.</i>	178 (03 %)	28 (< 1 %)	N/A
<i>Pinus nigra</i>	93 (02 %)	4 (< 1 %)	46 (01 %)
Other broadleaves	93 (02 %)	122 (03 %)	N/A
<i>Fagus sp.</i>	43 (< 1 %)	89 (02 %)	N/A
Other conifers	81 (02 %)	77 (02 %)	N/A
<i>Quercus ilex</i>	82 (02 %)	56 (01 %)	109 (03 %)
<i>Pinus pinaster</i>	42 (< 1 %)	57 (01 %)	84 (02 %)
<i>Abies alba</i>	59 (01 %)	N/A	58 (02 %)
<i>Picea sitchensis</i>	71 (01 %)	58 (01 %)	45 (01 %)
Total	4883 (92 %)	4416 (96 %)	3002 (89 %)

A novel approach to emission modelling of biogenic volatile organic compounds

D. C. Oderbolz et al.

Title Page

Abstract

Introduction

Conclusions

References

Tables

Figures

⏪

⏩

◀

▶

Back

Close

Full Screen / Esc

Printer-friendly Version

Interactive Discussion



Table 6. Total emissions in Ggmo^{-1} for January and June 2006 (common countries).

	January				June			
	ISOP	MT	SQT	OVOC	ISOP	MT	SQT	OVOC
S1	4	24	2	34	334	495	29	637
S2	2	23	1	27	230	518	19	591
S3	4	25	1	38	294	532	25	594

A novel approach to emission modelling of biogenic volatile organic compounds

D. C. Oderbolz et al.

Title Page

Abstract

Introduction

Conclusions

References

Tables

Figures

⏪

⏩

◀

▶

Back

Close

Full Screen / Esc

Printer-friendly Version

Interactive Discussion



Table 7. Annual total emissions in Gg yr⁻¹ in selected regions of Europe for 2006, ordered by total BVOC emissions projected by S1 (common countries).

	S1				S2				S3			
	ISOP	MT	SQT	OVOC	ISOP	MT	SQT	OVOC	ISOP	MT	SQT	OVOC
Central Europe ¹	474	711	35	1211	385	673	29	1039	435	770	40	1207
Iberian Peninsula ²	364	741	15	528	171	445	10	402	432	795	16	440
Balkan Peninsula ³	281	327	13	651	262	349	12	452	261	213	10	387
Scandinavian Peninsula ⁴	61	268	54	360	21	385	30	463	44	578	55	815
Italian Peninsula	201	150	6	254	104	201	5	204	131	127	5	193
British Isles ⁵	22	175	6	160	20	183	4	157	25	122	2	142
Baltic States ⁶	27	67	17	90	17	140	12	127	11	106	8	131
Benelux countries ⁷	23	19	1	37	6	35	1	36	20	22	1	43

¹ Austria, Czech Republic, Germany, France, Hungary, Poland, Slovakia, Switzerland

² Spain, Portugal

³ Bulgaria, Croatia, Greece, Romania, Slovenia

⁴ Sweden, Norway, Finland, Denmark

⁵ United Kingdom and the Republic of Ireland

⁶ Estonia, Latvia, and Lithuania

⁷ Belgium, Netherlands, Luxembourg

A novel approach to emission modelling of biogenic volatile organic compounds

D. C. Oderbolz et al.

[Title Page](#)

[Abstract](#)

[Introduction](#)

[Conclusions](#)

[References](#)

[Tables](#)

[Figures](#)

[⏪](#)

[⏩](#)

[◀](#)

[▶](#)

[Back](#)

[Close](#)

[Full Screen / Esc](#)

[Printer-friendly Version](#)

[Interactive Discussion](#)



Table 8. Comparison of total annual BVOC emissions (Gg yr^{-1}) in different countries to literature data. Base years of Simpson et al. (1999), Karl et al. (2009) and Smiatek and Steinbrecher (2006) are 1999, 2005 and 1994–2003, respectively. Note that the vegetation inventories of Simpson et al. (1999) and S2 as well as Karl et al. (2009), Smiatek and Steinbrecher (2006) and S3 are related.

	Simpson et al. (1999)	Karl et al. (2009)	Smiatek and Steinbrecher (2006)	S1	S2	S3
Finland	355	577		241	315	537
Spain	820	1042		1345	776	1324
Germany	474	349	366	583	448	499
United Kingdom	178	219		278	295	220

A novel approach to emission modelling of biogenic volatile organic compounds

D. C. Oderbolz et al.

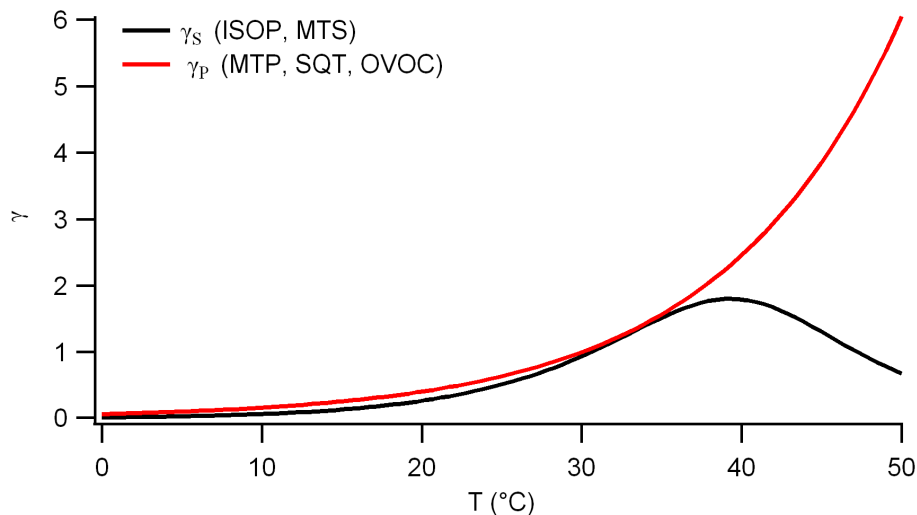
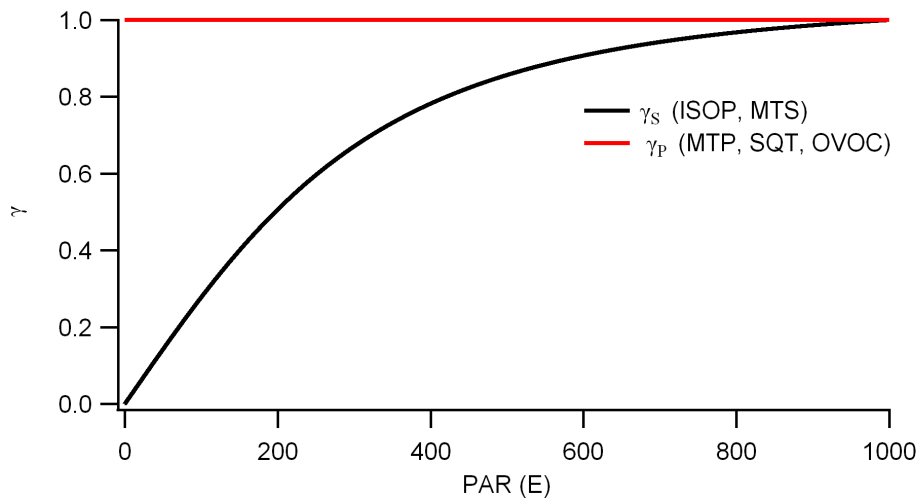


Fig. 1. Dependence of the environmental correction factors γ_P and γ_S on temperature at $\text{PAR} = 1000 \mu\text{mol m}^{-2} \text{s}^{-1}$.

A novel approach to emission modelling of biogenic volatile organic compounds

D. C. Oderbolz et al.

**Fig. 2.** Dependence of the environmental correction factors γ_P and γ_S on PAR at $T = 30^\circ$.[Title Page](#)[Abstract](#)[Introduction](#)[Conclusions](#)[References](#)[Tables](#)[Figures](#)[◀](#)[▶](#)[◀](#)[▶](#)[Back](#)[Close](#)[Full Screen / Esc](#)[Printer-friendly Version](#)[Interactive Discussion](#)

A novel approach to emission modelling of biogenic volatile organic compounds

D. C. Oderbolz et al.

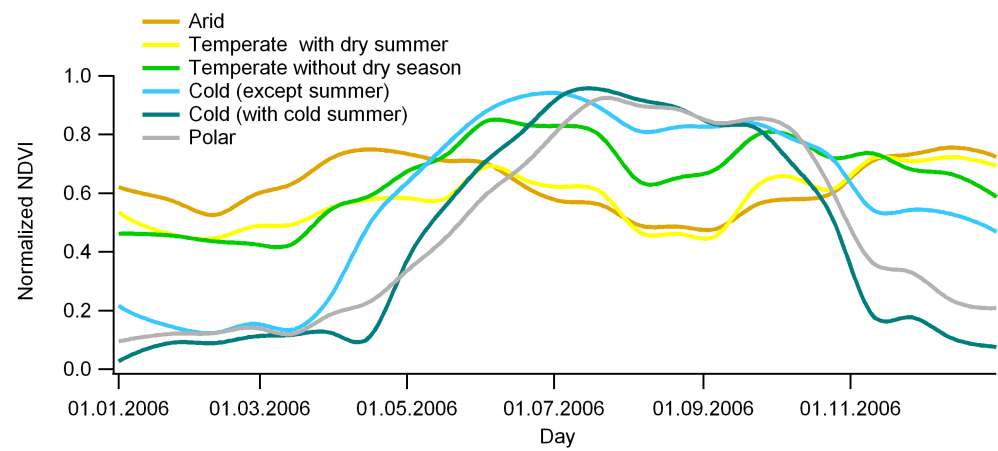


Fig. 3. Temporal evolution of average normalised NDVI in the six climatic zones.

Title Page

Abstract Introduction

Conclusions References

Tables Figures

⏪ ⏩

◀ ▶

Back Close

Full Screen / Esc

Printer-friendly Version

Interactive Discussion



A novel approach to emission modelling of biogenic volatile organic compounds

D. C. Oderbolz et al.

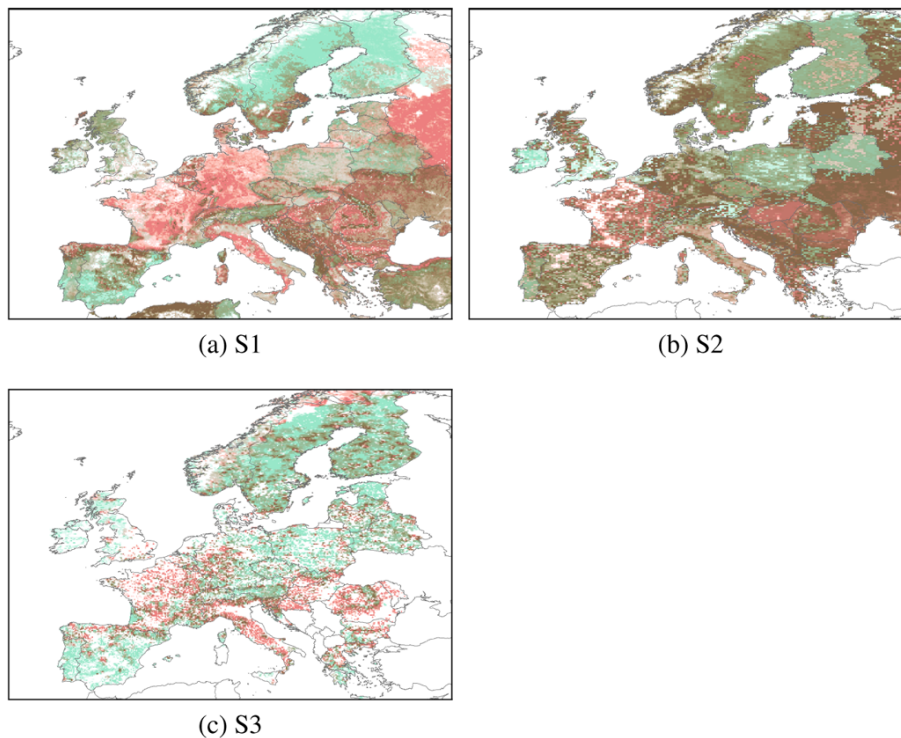


Fig. 4. False colour image of tree distribution of the three major inventories. Green channel: density of evergreen species, Red channel: density of deciduous species. The intensity of the colour is proportional to the fraction of the cell area covered by the given tree type, brown colours indicate mixed forests.

A novel approach to emission modelling of biogenic volatile organic compounds

D. C. Oderbolz et al.

Title Page

Abstract

Introduction

Conclusions

References

Tables

Figures

◀

▶

◀

▶

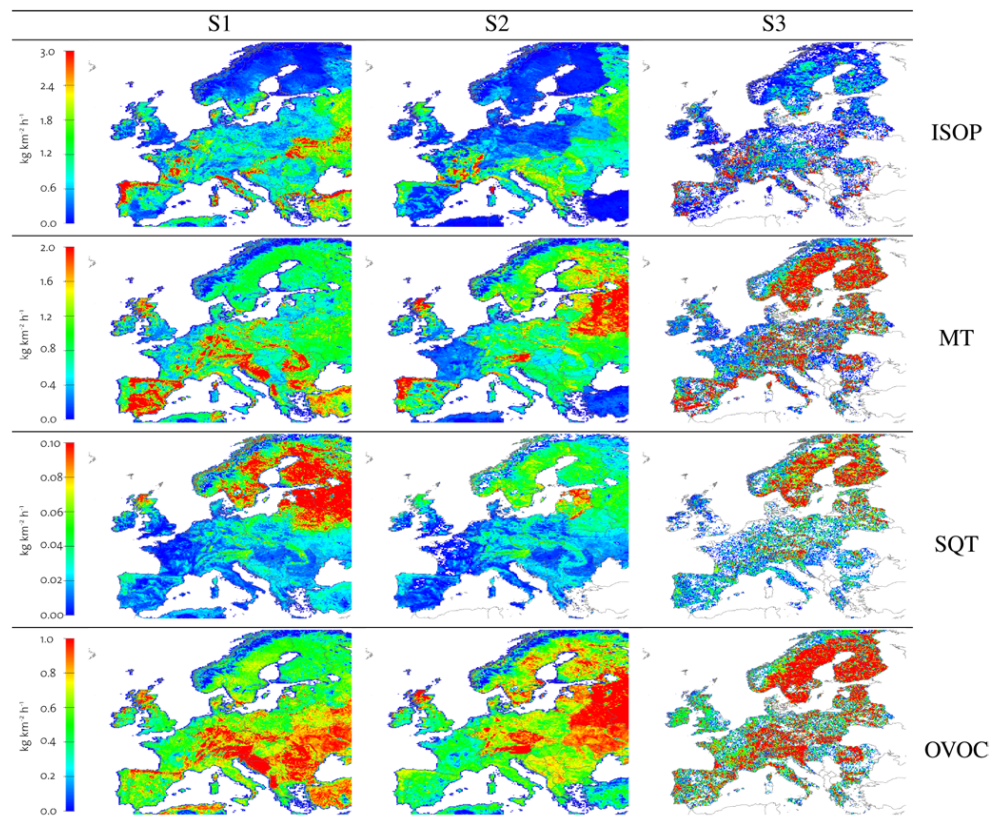
Back

Close

Full Screen / Esc

Printer-friendly Version

Interactive Discussion

**Fig. 5.** Standard emission potentials SEP at $T = 30^\circ$ and $\text{PAR} = 1000 \mu\text{mol m}^{-2} \text{s}^{-1}$.

A novel approach to emission modelling of biogenic volatile organic compounds

D. C. Oderbolz et al.

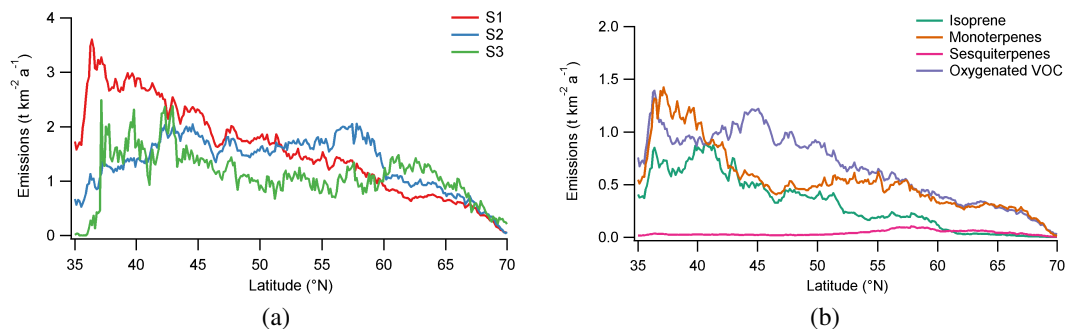
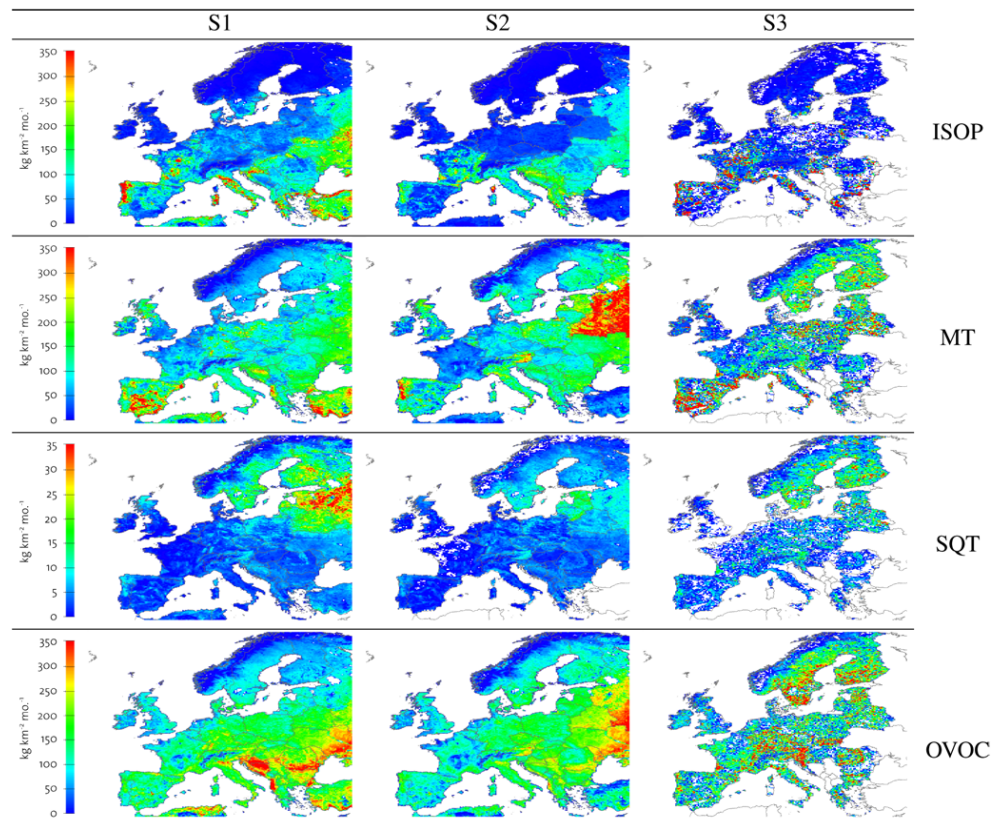


Fig. 6. Variation of annual emissions of 2006 for the original countries with latitude for the inventories (a) and variation of emissions of individual compounds in the S1 inventory with latitude (b).

[Title Page](#)[Abstract](#)[Introduction](#)[Conclusions](#)[References](#)[Tables](#)[Figures](#)[⏪](#)[⏩](#)[◀](#)[▶](#)[Back](#)[Close](#)[Full Screen / Esc](#)[Printer-friendly Version](#)[Interactive Discussion](#)

A novel approach to emission modelling of biogenic volatile organic compounds

D. C. Oderbolz et al.

**Fig. 7.** Total Emissions in June 2006 for the inventories S1–S3.

Title Page

Abstract

Introduction

Conclusions

References

Tables

Figures

◀

▶

◀

▶

Back

Close

Full Screen / Esc

Printer-friendly Version

Interactive Discussion

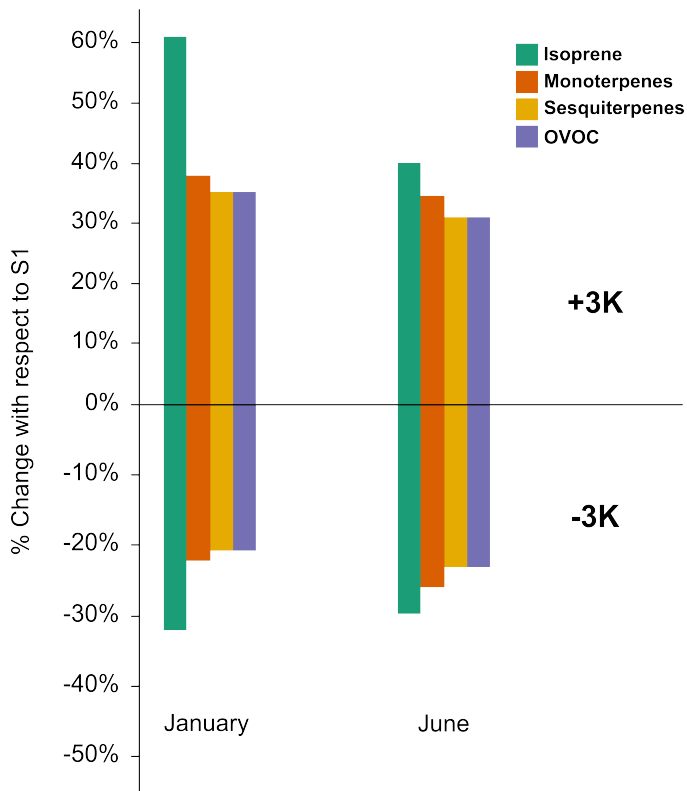


Fig. 8. Sensitivity of emissions to air temperature for S1 inventory in January and June 2006 (original countries). The sensitivities in S2 and S3 are very similar with differences in the $\pm 1\%$ range.

A novel approach to emission modelling of biogenic volatile organic compounds

D. C. Oderbolz et al.

Title Page

Abstract

Introduction

Conclusions

References

Tables

Figures

⏪

⏩

◀

▶

Back

Close

Full Screen / Esc

Printer-friendly Version

Interactive Discussion



A novel approach to emission modelling of biogenic volatile organic compounds

D. C. Oderbolz et al.

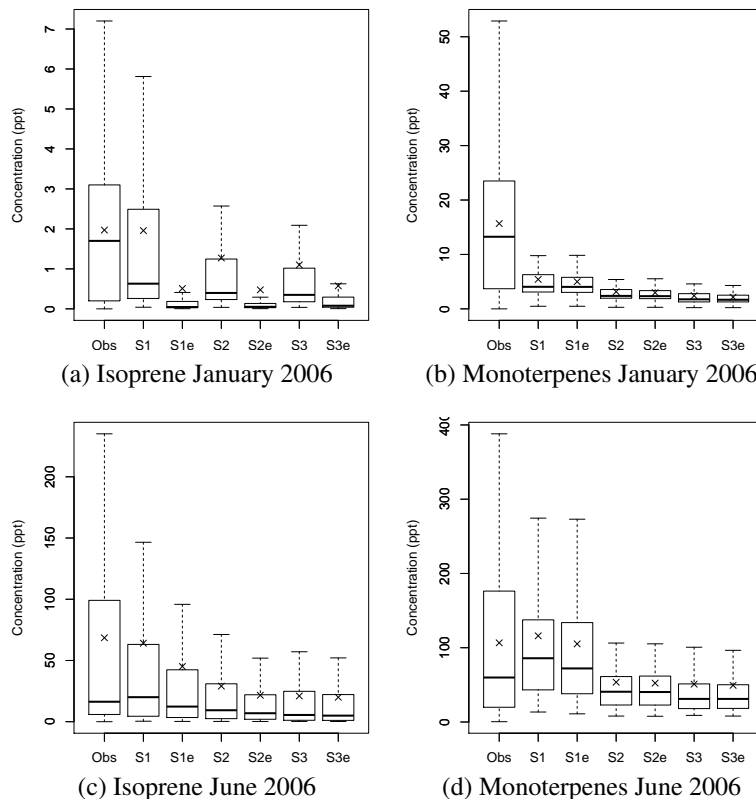


Fig. 9. Observed (Obs) versus modelled concentrations at Hohenpeissenberg for S1–S3 and the corresponding scenarios with enzyme seasonality S1e–S3e. The boxes indicate the interquartile range, the median is the horizontal line in the box and the crosses indicate the averages. The whiskers extend to a value that is 1.5 times the interquartile range from the box.

[Title Page](#)
[Abstract](#)
[Introduction](#)
[Conclusions](#)
[References](#)
[Tables](#)
[Figures](#)
[◀](#)
[▶](#)
[◀](#)
[▶](#)
[Back](#)
[Close](#)
[Full Screen / Esc](#)
[Printer-friendly Version](#)
[Interactive Discussion](#)