

**On the isolation of
OC and EC**

Y. L. Zhang et al.

This discussion paper is/has been under review for the journal Atmospheric Chemistry and Physics (ACP). Please refer to the corresponding final paper in ACP if available.

On the isolation of OC and EC and the optimal strategy of radiocarbon-based source apportionment of carbonaceous aerosols

Y. L. Zhang^{1,2,3}, N. Perron^{2,*}, V. G. Ciobanu², P. Zotter², M. C. Minguillón^{2,4},
L. Wacker⁵, A. S. H. Prévôt², U. Baltensperger², and S. Szidat^{1,3}

¹Department of Chemistry and Biochemistry, University of Bern, Freiestrasse 3, 3012 Bern, Switzerland

²Paul Scherrer Institute (PSI), Villigen, Switzerland, 5232 Villigen, Switzerland

³Oeschger Centre for Climate Change Research, University of Bern, 3012 Bern, Switzerland

⁴Institute of Environmental Assessment and Water Research (IDAEA), CSIC, 08034 Barcelona, Spain

⁵Laboratory of Ion Beam Physics, ETH Hönggerberg, 8093 Zürich, Switzerland

* now at: Division of Nuclear Physics, Lund University, 22100 Lund, Sweden

17657

Title Page

Abstract

Introduction

Conclusions

References

Tables

Figures

◀

▶

◀

▶

Back

Close

Full Screen / Esc

Printer-friendly Version

Interactive Discussion



Received: 27 June 2012 – Accepted: 5 July 2012 – Published: 18 July 2012

Correspondence to: S. Szidat (szidat@iac.unibe.ch)

Published by Copernicus Publications on behalf of the European Geosciences Union.

Discussion Paper | Discussion Paper | Discussion Paper | Discussion Paper | Discussion Paper

ACPD

12, 17657–17702, 2012

On the isolation of OC and EC

Y. L. Zhang et al.

Title Page

Abstract

Introduction

Conclusions

References

Tables

Figures

⏪

⏩

◀

▶

Back

Close

Full Screen / Esc

Printer-friendly Version

Interactive Discussion



Abstract

Radiocarbon (^{14}C) measurements of elemental carbon (EC) and organic carbon (OC) separately (as opposed to only total carbon, TC) allow an unambiguous quantification of their non-fossil and fossil sources and represent an improvement in carbonaceous aerosol source apportionment. Isolation of OC and EC for accurate ^{14}C determination requires complete removal of interfering fractions with maximum recovery. To evaluate the extent of positive and negative artefacts during OC and EC separation, we performed sample preparation with a commercial Thermo-Optical OC/EC Analyser (TOA) by monitoring the optical properties of the sample during the thermal treatments. Extensive attention has been devoted to the set-up of TOA conditions, in particular, heating program and choice of carrier gas. Based on different types of carbonaceous aerosols samples, an optimised TOA protocol (Swiss_4S) with four steps is developed to minimise the charring of OC, the premature combustion of EC and thus artefacts of ^{14}C -based source apportionment of EC. For the isolation of EC for ^{14}C analysis, the water-extraction treatment on the filter prior to any thermal treatment is an essential prerequisite for subsequent radiocarbon; otherwise the non-fossil contribution may be overestimated due to the positive bias from charring. The Swiss_4S protocol involves the following consecutive four steps (S1, S2, S3 and S4): (1) S1 in pure oxygen (O_2) at 375°C for separation of OC for untreated filters, and water-insoluble organic carbon (WINSOC) for water-extracted filters; (2) S2 in O_2 at 475°C , followed by (3) S3 in helium (He) at 650°C , aiming at complete OC removal before EC isolation and leading to better consistency with thermal-optical protocols like EUSAAR_2, compared to pure oxygen methods; and (4) S4 in O_2 at 760°C for recovery of the remaining EC.

WINSOC was found to have a significantly higher fossil contribution than the water-soluble OC (WSOC). Moreover, the experimental results demonstrate the lower refractivity of wood-burning EC compared to fossil EC and the difficulty of clearly isolating EC without premature evolution. Hence, simplified techniques of EC isolation for ^{14}C analysis are prone to a substantial bias and generally tend towards an underestimation

On the isolation of OC and EC

Y. L. Zhang et al.

Title Page

Abstract

Introduction

Conclusions

References

Tables

Figures

◀

▶

◀

▶

Back

Close

Full Screen / Esc

Printer-friendly Version

Interactive Discussion



of the non-fossil sources. Consequently, the optimal strategy for ^{14}C -based source apportionment of carbonaceous aerosols should follow an approach to subdivide TC into different carbonaceous aerosol fractions for individual ^{14}C analyses, as these fractions differ in their origins. To obtain the comprehensive picture of the sources of carbonaceous aerosols, the Swiss_4S protocol is not only implemented to measure OC and EC fractions, but also WINSOC as well as a continuum of refractory OC and non-refractory EC for ^{14}C source apportionment. In addition, WSOC can be determined by subtraction of the water-soluble fraction of TC from untreated TC. Last, we recommend that ^{14}C results of EC should in general be reported together with the EC recovery.

1 Introduction

Carbonaceous aerosols are of worldwide concern due to their effects on climate and air quality (Highwood and Kinnersley, 2006; Mauderly and Chow, 2008). The total carbon (TC) content of this highly variable mixture, made of extremely different and mainly unidentified compounds (Turpin et al., 2000) is usually divided into two sub-fractions: weakly refractory and light polycyclic or polyacidic hydrocarbons (organic carbon, OC) and strongly refractory and highly polymerized carbon (elemental carbon, EC), which is also designated as black carbon (BC) (Castro et al., 1999; Pöschl, 2005). Particulate EC derives from incomplete combustion of fossil fuels and biomass, whereas OC originates from either primary emissions or secondary organic carbon (SOC) formation (Pöschl, 2005). Since OC and EC play decisive but different roles in the global climate and on human health, assessing their respective source strengths is needed for a better understanding of their influences as well as for efficient abatement strategies. Such a source apportionment can be performed by measuring the radiocarbon (^{14}C) content of OC and EC separately, which provides direct and additional information about their contemporary and fossil sources (Currie, 2000; Szidat, 2009; Szidat et al., 2009).

Since both fractions are influenced by very different sources (Szidat et al., 2009), however, the ^{14}C -based source apportionment method requires a clear and physical

On the isolation of OC and EC

Y. L. Zhang et al.

Title Page

Abstract

Introduction

Conclusions

References

Tables

Figures

◀

▶

◀

▶

Back

Close

Full Screen / Esc

Printer-friendly Version

Interactive Discussion



**On the isolation of
OC and EC**

Y. L. Zhang et al.

[Title Page](#)[Abstract](#)[Introduction](#)[Conclusions](#)[References](#)[Tables](#)[Figures](#)[◀](#)[▶](#)[◀](#)[▶](#)[Back](#)[Close](#)[Full Screen / Esc](#)[Printer-friendly Version](#)[Interactive Discussion](#)

separation between them, which is not trivial. Indeed, the distinction between OC and EC is based on a conceptual and operational definition and does not correspond in reality to a clear boundary. On the one hand, OC compounds become more chemically refractory and optically absorbing with increasing molecular weight. On the other hand, EC also presents a continuum (Elmquist et al., 2006), the least refractory part of which may show a chemical and physical behaviour similar to high-molecular-weight OC compounds. Consequently, thermal separation of OC and EC may suffer from untimely EC removal (Andreae and Gelencser, 2006) described as the negative EC artefact. These losses are particularly enhanced for wood-burning-impacted samples because of the presence of inorganic combustion catalysts (Novakov and Corrigan, 1995) and of the lower refractivity of the wood-burning EC compared to fossil EC (Elmquist et al., 2006).

Thermal-optical analysis (TOA) has been widely used for the determination of EC and OC (Schmid et al., 2001; Chow et al., 2004; Phuah et al., 2009; Cavalli et al., 2010). It typically begins with a heating step in an inert (i.e. helium) atmosphere, aiming at evaporating OC exclusively. An oxidative gas (e.g. 2 % oxygen in helium) is then introduced in a second step to oxidise the remaining material, assumed to contain the entire EC fraction. Differentiation between OC and EC relies on the prerequisite that these components can be distinguished by their volatilization and oxidation properties. However, OC can partially be converted into EC through a pyrolysis (Cadle et al., 1980) during the inert step, which induces a positive artefact in the determination of EC in the second step. Because of this process, known as charring, OC may be underestimated and EC may be overestimated. The correction of charring in TOA method is applied by continuously monitoring the transmittance or reflectance of the sample filter during analysis (Birch and Cary, 1996; Chow et al., 2001). The OC-EC split is generally defined as the point where the transmittance or reflectance level returns to its initial level after a transient reduction of the laser response due to OC charring. The remaining carbon after the split point during the oxidative mode is regarded as EC. A good agreement was found for the analysis of TC during inter-laboratory and inter-method comparisons, with relative standard deviations of less than 10 %. In contrast, EC determinations were

highly variable with a factor of two or even more depending on the protocols and type of samples (Schmid et al., 2001; Currie et al., 2002; Schauer et al., 2003).

Huang et al. (2006) developed a method to measure $^{13}\text{C}/^{12}\text{C}$ ratios of individual carbon fractions of airborne particulate matter from filter samples using a TOA OC/EC analyser coupled with an isotopic ratio mass spectrometer (GC-IRMS). However, such TOA methods have not yet been applied to isolate EC and OC for ^{14}C analysis. The largest challenge is to define a split point between OC and EC for individual isolation of both fractions. The split point between OC and EC in conventional TOA protocols (such as EUSAAR_2, NIOSH and IMPROVE) cannot be directly used for separation of the desired carbon fractions for ^{14}C measurement, because it does not provide a chemical boundary between OC and EC. Indeed, the split between charred OC and EC relies notably on the assumptions that both materials present the same mass absorption efficiency and that charred OC evolves completely before EC oxidation starts, both of which have been reported not to be the case for most samples (Yang and Yu, 2002; Bond and Bergstrom, 2006). Therefore, the carbonaceous material evolved after the split point with conventional TOA protocols, albeit quantified as EC, may contain a mix of EC and charred OC and is therefore inappropriate for ^{14}C analysis of EC. Consequently, a main difficulty consists in achieving complete OC removal before EC isolation.

In an effort to reduce both above-mentioned artefacts, especially charring, Cachier et al. (1989) replaced the evaporation step by the combustion of OC in pure oxygen (O_2). This two-step combustion method was further optimised for OC and EC quantification by Lavanchy et al. (1999) and then adapted to a *Two-step Heating* system for the *EC/OC Determination Of Radiocarbon in the Environment* (THEODORE, Szidat et al., 2004a), which was then adopted by many other laboratories (e.g. Zhang et al., 2010; Calzolari et al., 2011). A technique with chemo-thermal oxidation at 375°C in air (CTO-375) is also commonly applied to determine EC or BC (Gustafsson et al., 2001) and isolate EC from aerosols for subsequent off-line radiocarbon analysis (Zencak et al., 2007). Compared to methods based on OC removal in an inert atmosphere, both the

**On the isolation of
OC and EC**

Y. L. Zhang et al.

Title Page

Abstract

Introduction

Conclusions

References

Tables

Figures

◀

▶

◀

▶

Back

Close

Full Screen / Esc

Printer-friendly Version

Interactive Discussion



two-step combustion method and the CTO-375 method are less prone to charring and inadvertent inclusion of any other non-pyrogenic carbon. It should be noted that the pre-treatment step of the water extraction is introduced in the THEODORE method to reduce charring further. However, both methods may also remove substantial amounts of non-refractory EC (non-rEC) during the thermal treatment, so that the isolated EC much likely reflects only the most refractory EC (rEC) and cannot fully represent the total EC (tEC) spectrum.

Therefore, these thermal methods do not enable the full quantification of the positive and negative EC artefacts due to charring and premature EC removal. As wood-burning EC was reported to be the least refractory EC fraction (Elmqvist et al., 2006), parts of it may have been oxidized during the OC step, leading to an underestimation of this EC fraction. This could be especially crucial in areas where a lot of EC is due to biomass burning, as in the Alpine valleys, where residential heating is important (Szidat et al., 2007; Lanz et al., 2010).

In this study, we present an optimised procedure for the isolation of OC and EC for ^{14}C analysis, based on thermo-optical OC/EC analysis. We qualitatively define EC and OC as the subfractions of TC that do and do not absorb light at the wavelength of thermal-optical OC/EC analysers (e.g. 660 nm), respectively, following the general assumptions of conventional TOA protocols which are a prerequisite for their optical correction (Birch and Cary, 1996; Chow et al., 2001; Cavalli et al., 2010). In particular, we show how different conditions of temperatures and carrier gases influence the separation of OC and EC and the ^{14}C content of the removed carbon fractions. Furthermore, an optimised TOA protocol is developed to isolate the carbon fractions of interest (i.e. OC and EC) for ^{14}C analysis with minimised biases from charring and premature EC lost. Finally, we discuss the optimum strategy of ^{14}C -based source apportionment of carbonaceous aerosols, especially for EC samples.

**On the isolation of
OC and EC**

Y. L. Zhang et al.

[Title Page](#)[Abstract](#)[Introduction](#)[Conclusions](#)[References](#)[Tables](#)[Figures](#)[◀](#)[▶](#)[◀](#)[▶](#)[Back](#)[Close](#)[Full Screen / Esc](#)[Printer-friendly Version](#)[Interactive Discussion](#)

2 Methods

2.1 The previous two-step combustion method

The THEODORE (*Two-step Heating system for the EC/OC Determination Of Radiocarbon in the Environment*) system (Szidat et al., 2004a) is a set-up that was previously used for the combustion and the recovery of carbonaceous fractions for ^{14}C -based source apportionment. It consists of a quartz combustion tube where a filter punch is inserted and combusted under a stream of pure O_2 . After removal of water, the resulting CO_2 is trapped cryogenically, determined manometrically and sealed in glass ampoules for subsequent ^{14}C off-line analysis.

The procedure to collect TC/OC/EC for ^{14}C analysis was described elsewhere (Szidat et al., 2004b, 2006, 2009). In brief, TC samples are prepared by combusting a punch of the original filter at 650°C during 12 min in the THEODORE system and recovering the CO_2 as described above. For OC samples, the combustion temperature is set to 340°C for 10 min. For EC isolation, water-extracted filters are heated for four hours in air at a certain temperature (e.g. 375°C) to remove the remaining OC. The remaining material on the filters is regarded as EC and combusted totally in the THEODORE system at 650°C .

2.2 Setup of thermo-optical methods with the OC/EC analyser

In this work, the combustion unit of the THEODORE system has been replaced by a thermo-optical OC/EC analyser (Model4L, Sunset Laboratory Inc., USA), which is especially equipped with a non-dispersive infrared (NDIR) detector. The filter transmittance is monitored by a 660-nm tuned-diode laser and the CO_2 resulting from the sample analysis quantified by an NDIR cell placed upstream the instrument outlet. This outlet is connected with a four-way valve to the CO_2 cryogenic traps of the THEODORE system so as to recover the exhaust CO_2 selectively corresponding to the desired fractions (Fig. 1). Additionally, a voltage control valve and a gas flow sensor are installed for

On the isolation of OC and EC

Y. L. Zhang et al.

Title Page

Abstract

Introduction

Conclusions

References

Tables

Figures

◀

▶

◀

▶

Back

Close

Full Screen / Esc

Printer-friendly Version

Interactive Discussion



O₂ flow controlling. Three different ultrahigh-purity carrier gases including helium (He) (> 99.999 %, followed by a moisture/hydrocarbon/O₂ purification trap), He/O₂ gas (2 % O₂ in He) and O₂ gas (99.9995 %) as well as an internal standard gas (5 % methane in He) are controlled by the gas flow program of the instrument. The gas flow rate through the OC/EC analyser is adjusted and stabilised at 60 ml min⁻¹. No back pressure is observed at this flow when switching valves.

2.3 Water extraction

For EC separation, water-extraction treatment of the filter is performed before the thermal treatment, in order to minimise charring (see Sect. 3.1). Therefore, a method was developed to obtain minimal EC removal in water with high homogeneity on the filter, which is necessary due to the narrowness (~ 1 mm diameter) of the laser beam (J. Dixon, personal communication, 2010). Under a laminar flow box, 23-mm-diameter discs are punched out of the filters, sandwiched between two sealing rings and placed with the laden side upwards on a 25-mm-diameter plastic filter holder (Sartorius GmbH, Germany) and topped by a plastic syringe body. 20 ml ultrapure water with low TOC impurity is then passed through the filter without a pump. The filter punch is then delicately removed and placed for several hours in the desiccator for drying. Finally, a 1.5 cm² rectangle is punched out of the water-extracted filter, wrapped in aluminium foil, packed into a sealed plastic bag and stored in the freezer (-18 °C) until OC/EC analysis.

The initial attenuation of the water-extracted filters varied up to 3 % compared to that of the untreated filters, indicating that there is very little loss of EC during the water extraction procedure. Pre-acidification is omitted, because carbonate carbon (CC) is negligible in the samples of this study. However, samples may be fumigated with hydrochloric acid prior to analysis (Cachier et al., 1989) for the removal of their CC content for coarse-particle samples, particularly if they are impacted by soil dust. However, this procedure is not recommended when using a TOA analyser, since the presence of chlorides progressively makes the laser's quartz optical window opaque. In order to

17665

ACPD

12, 17657–17702, 2012

On the isolation of OC and EC

Y. L. Zhang et al.

Title Page

Abstract

Introduction

Conclusions

References

Tables

Figures

◀

▶

◀

▶

Back

Close

Full Screen / Esc

Printer-friendly Version

Interactive Discussion



study the charring behaviour of water-soluble OC (WSOC), the solution obtained from water extraction is evaporated to dryness with a gentle N₂ flow and then reconstituted with 200 µl of water. Various amounts (e.g. 20 µl) of the water extracts are then spiked to prebaked quartz filters, and then the air-dried filters are analysed by the TOA methods.

2.4 TOA protocol for OC/EC separation

By using the OC/EC analyser, we aim at developing a four-step (S1, S2, S3 and S4) thermal-optical protocol (Swiss_4S) to separate different carbon fractions from water-extracted and untreated samples for ¹⁴C measurement. The parameters of this protocol will be discussed and presented in Sect. 3.2. Figure 2 sketches the separation scheme for different carbonaceous particle fractions. Specifically, OC is separated from EC during S1 applied to untreated aerosols filters, with a recovery of ~ 80 % for subsequent ¹⁴C analysis. When analysing water-extracted aerosols filters, water-insoluble OC (WINSOC), a mixture of refractory WINSOC and non-rEC as well as rEC are separated individually during S1, S2 + S3 and S4, respectively. Water-soluble OC (WSOC) is deduced from subtraction of TC and water-insoluble TC (WINSTC) is calculated based on mass and isotope-mass balancing.

2.5 Quantification of EC yields and charred OC

Similar to Gundel et al. (1984), the attenuation at the time t (ATN _{t} , a unitless parameter) due to the light-absorbing particles on the filter is calculated from the laser transmission raw signal (I), using the Beer-Lambert law:

$$\text{ATN}_t = -100 \ln \frac{I_t}{I_t(b)} \quad (1)$$

where I_t and $I_t(b)$ represent the laser signal during analysis at the time t and the blank signal for the same filter, respectively. The temperature dependence of $I_t(b)$ is assessed at the end of each run when the filter cools down after total combustion of

On the isolation of OC and EC

Y. L. Zhang et al.

[Title Page](#)[Abstract](#)[Introduction](#)[Conclusions](#)[References](#)[Tables](#)[Figures](#)[◀](#)[▶](#)[◀](#)[▶](#)[Back](#)[Close](#)[Full Screen / Esc](#)[Printer-friendly Version](#)[Interactive Discussion](#)

its carbonaceous content and applied to the whole thermal programme. Thus, $I_t(b)$ accounts for the temperature-induced change in filter transmission and for the potential presence of light-absorbing compounds such as Fe_2O_3 remaining on the filter after combustion.

5 Assuming a linear relationship between ATN and the filter EC load, the optical yield of EC during analysis is defined by the ratio $\text{ATN}_t/\text{ATN}_0$, where ATN_0 is the initial ATN which is related to the total amount of EC on the filter:

$$\text{EC yield} = \frac{\text{ATN}_t}{\text{ATN}_0} \quad (2)$$

10 Since a portion of OC is charred to an absorbing EC-like material instead being directly oxidized to CO_2 , the instrument relies on the change in transmission of a laser through the filter to account for charred OC. Formation of charred OC related to EC ($f\text{ATN}_{\text{char}}$) is indicated as:

$$f\text{ATN}_{\text{char}} = \frac{\text{ATN}_{\text{max}} - \text{ATN}_i}{\text{ATN}_i} \quad (3)$$

15 where ATN_{max} and ATN_i represent the maximum attenuation and the initial attenuation within a given thermal step, respectively.

2.6 ^{14}C analysis

For the recovered fractions, evolving CO_2 is trapped cryogenically, quantified manometrically in a calibrated volume of the THEODORE system, and sealed in ampoules for ^{14}C measurement (Szidat et al., 2004a). Good agreement is found between the Sunset carbon amounts and the THEODORE pressure measurements (data are not shown here). ^{14}C analysis of CO_2 is performed off-line with the accelerator mass spectrometer MICADAS (Synal et al., 2007) using a gas ion source (Ruff et al., 2007; Wacker et al., 2012), which allows direct CO_2 injection after dilution with He (Ruff et al., 2010).

On the isolation of OC and EC

Y. L. Zhang et al.

Title Page

Abstract

Introduction

Conclusions

References

Tables

Figures

◀

▶

◀

▶

Back

Close

Full Screen / Esc

Printer-friendly Version

Interactive Discussion



In this study, all ^{14}C measurements are expressed as fractions of modern (f_M). This term is defined by the fraction of the measured $^{14}\text{C}/^{12}\text{C}$ ratio related to the $^{14}\text{C}/^{12}\text{C}$ ratio of the reference year 1950, which in turn is defined as 0.95-times the value of the contemporary standard for ^{14}C dating, SRM 4990B (Stuiver and Polach, 1977). All reported results are corrected for $\delta^{13}\text{C}$ fractionation and for ^{14}C decay for the time period between 1950 and the year of measurement.

It is important to keep in mind that the present reported f_M is higher than the fraction of non-fossil (f_{NF}), because f_M of atmospheric CO_2 increased greatly due to atomic bomb tests in the 1950s and 1960s (Szidat et al., 2006; Levin et al., 2010). The reported f_M can be converted to the fraction of non-fossil (f_{NF}) by the following equation:

$$f_{\text{NF}} = \frac{f_M}{f_{\text{NF}}(\text{ref})} \quad (4)$$

where $f_{\text{NF}}(\text{ref})$ is a reference value representing f_M of non-fossil sources during the sampling periods, which can be further separated into biogenic (bio) and biomass-burning (bb) sources given that other non-fossil sources (e.g. cooking and biofuel combustion) are negligible. Hence, $f_{\text{NF}}(\text{ref})$ is defined as:

$$f_{\text{NF}}(\text{ref}) = \rho_{\text{bio}} \times f_{\text{bio}}(\text{ref}) + (1 - \rho_{\text{bio}}) \times f_{\text{bb}}(\text{ref}) \quad (5)$$

where ρ_{bio} refers to the percent of the biogenic sources to the total non-fossil sources; $f_{\text{bb}}(\text{ref})$ can be retrieved from a tree-growth model according to Mohn et al. (2008), and $f_{\text{bio}}(\text{ref})$ from the long-term time series of $^{14}\text{CO}_2$ measurements in atmosphere at the Schauinsland station (Levin et al., 2010). In the case of source apportionment of OC, ρ_{bio} can be simply estimated as a constant value (e.g. 50 %) given that the variations of $f_{\text{NF}}(\text{ref})$ produced by different ρ_{bio} values are relatively small, especially if compared to the measurement and method uncertainties (Minguillón et al., 2011). And in the case of EC, ρ_{bio} is zero as biomass burning is the only source of non-fossil EC.

**On the isolation of
OC and EC**

Y. L. Zhang et al.

Title Page

Abstract

Introduction

Conclusions

References

Tables

Figures

◀

▶

◀

▶

Back

Close

Full Screen / Esc

Printer-friendly Version

Interactive Discussion



2.7 Filter samples

The atmospheric samples used in this study were collected by high-volume samplers on prebaked quartz-fibre filters during various field campaigns, which are compiled in Table 1. After sampling, all filters were wrapped in aluminium foils, packed in air-tight polyethylene bags and stored at -18°C for later off-line analyses.

3 Implementation of the thermo-optical OC/EC separation

3.1 Relevance of the charring-removing treatment

Charred OC may not be removed totally before the split point in conventional TOA methods (e.g. IMPROVE and NIOSH) (Yu et al., 2002). As a consequence, the formation of EC-like material due to OC charring can lead to a large bias on the f_M value of the EC fraction ($f_M(\text{EC})$), since the modern fractions of EC and OC can differ significantly (Szidat et al., 2004b, 2009). Therefore, charring should be reduced to a minimum for an optimised EC isolation for ^{14}C analysis. The suppression of charring is especially achieved by water-extraction treatment on the one hand and oxidative treatment (i.e. combustion in pure O_2) of the filters on the other hand. The water-extraction treatment prior to the EC collection substantially reduces charring due to the removal of WSOC as well as of some inorganic catalytic compounds (Novakov and Corrigan, 1995; Mayol-Bracero et al., 2002; Yu et al., 2002; Andreae and Gelencser, 2006; Piazalunga et al., 2011). Furthermore, Cachier et al. (1989) and Lavanchy et al. (1999) observed that charring is substantially smaller if pure oxygen is used for the OC step instead of helium.

With on-line monitoring of the optical properties of the filter during analysis, the relevance of using pure oxygen and water-extracted filters to avoid charring was assessed (Fig. 3). Five different sample filters were analysed with the OC/EC analyser using three different methods (Table 2): (1) a modified NIOSH protocol applied to untreated

On the isolation of OC and EC

Y. L. Zhang et al.

[Title Page](#)[Abstract](#)[Introduction](#)[Conclusions](#)[References](#)[Tables](#)[Figures](#)[◀](#)[▶](#)[◀](#)[▶](#)[Back](#)[Close](#)[Full Screen / Esc](#)[Printer-friendly Version](#)[Interactive Discussion](#)

**On the isolation of
OC and EC**

Y. L. Zhang et al.

Title Page

Abstract

Introduction

Conclusions

References

Tables

Figures

◀

▶

◀

▶

Back

Close

Full Screen / Esc

Printer-friendly Version

Interactive Discussion



filters; (2) the Swiss_4S protocol applied to untreated filters; (3) the Swiss_4S protocol applied to water-extracted filters. The filter attenuation increases by 52–121 % during the He steps of the NIOSH method, which indicates substantial formation of charred OC. Charring is substantially reduced if analysing the same filters with the Swiss_4S that uses an oxidative atmosphere (pure O₂) before the EC step instead of an inert atmosphere (i.e. NIOSH) to remove OC. Charring is further reduced if analysis is carried out on water-extracted filters. For all studied samples including winter/summer and rural/urban samples, a charring-induced change of the ATN is reduced to < 7 % of total EC, if OC removal is performed under pure O₂ on water-extracted filters. Furthermore, OC isolation in He gas appears inappropriate for ¹⁴C analysis of EC, because charring induces an excess of artificial EC. As a consequence, the conventional TOA procedures based on OC removal in He (i.e. EUSAAR_2, IMPROVE and NIOSH) cannot be adapted directly to OC and EC separation for ¹⁴C analysis, because it is not clear whether the artificial EC is totally removed before the split point or remains partially on the filter and afterwards evolves together with EC.

The importance of the water-extraction treatment is also underlined by the comparison of the thermograms of a typical aerosol filter and of its WSOC fraction loaded on a blank filter (Fig. 4; for details of the protocol see Sect. 3.2.1). Charring is negligible if analysing the water-extracted aerosols (Fig. 4a). The carbon released in the S4 can consequently be regarded as native EC unaffected by charring and with approximately 75 % EC yield. If the water-soluble portion of OC is subjected to the same thermal analysis, substantial charring occurs during steps S1–S3 (Fig. 4b) and EC that should not be present is found, indicating that part of the charred OC cannot be removed before S4, and thus is misclassified as EC. Yu et al. (2002) already demonstrated that charring generated from WSOC is indistinguishable from the original aerosol EC and thus that a fraction of WSOC and EC evolve at the same time. The results confirm that the water-extraction treatment is a prerequisite to isolate EC for ¹⁴C measurement. Although it is not guaranteed that the fractions interfering with EC, including charred carbon fractions and refractory OC, are negligible for all water-extracted samples, they

are reduced to acceptable levels with the Swiss_4S protocol. In conclusion, the optimal method to isolate EC from TC for ^{14}C measurement should be based on removing OC in pure oxygen on water-extracted filters before thermal treatments.

3.2 The Swiss_4S protocol

3.2.1 Operational conditions

The TOA protocol Swiss_4S used in this study employs pure O_2 (except in S3) as carrier gas and sets the durations of each temperature step in order to obtain well-resolved carbon peaks with baseline separations (Table 2). The transmittance signal is used for optical monitoring. The operational conditions were optimised to satisfy the following goals: (1) complete decomposition of OC prior to EC collection, (2) negligible charring formation and (3) minimum premature EC evolution.

The peak temperature in S1 is set to 375°C to allow OC removal with least premature EC losses. Although small amounts of refractory organic substances may still not be decomposed at this temperature, 375°C is a good compromise between the needs of high OC yields and avoiding EC pre-combustion. $\sim 80\%$ of WINSOC is decomposed in this step. However, the attenuation decrease suggests 1–7 % EC removal during S1, which accounts for up to 3 % uncertainty of f_{M} of WINSOC. S2 and S3 are introduced in order to remove remaining refractory OC completely, with minimum EC losses. OC often includes high-molecular-weight compounds (e.g. humic-like substances, HULIS) with a thermal behaviour quite similar to the least refractory EC (Fermo et al., 2006). Iwatsuki et al., 1998 reported that it is necessary to reach a threshold temperature of 485°C under pure oxygen for complete removal of these substances. In our experiment, the peak temperature in S2 is set to a value between 425°C and 600°C (see Sect. 3.2.2) to remove most of the OC remaining after S1 with minimum EC losses, thus preventing OC from charring in the following steps. The duration is set to 120 s to allow different chosen temperatures (from 425°C to 600°C) to stay close to the set value for about 20 s. S3 continues with OC removal in He and monitors the evolution of

On the isolation of OC and EC

Y. L. Zhang et al.

Title Page

Abstract

Introduction

Conclusions

References

Tables

Figures

◀

▶

◀

▶

Back

Close

Full Screen / Esc

Printer-friendly Version

Interactive Discussion



any residual OC before switching to the last step (S4). The thermal parameters in S3 are similar to the last two He steps in the conventional TOA protocols (i.e. EUSAAR_2, see Table 2.). For a limited number of samples, different peak S3 temperatures were also investigated (see Sect. 3.2.3). Last, S4 is set to 760 °C for 150 s, so as to remove all the remaining carbon on the filter. In the following expressions, $f_M(\text{OC})$ and $f_M(\text{EC})$ represent the fraction of modern of the isolated OC (i.e. S1) and EC (i.e. S4), respectively.

3.2.2 Influence of the S2 temperature on OC/EC separation

S2 was optimised to remove OC as completely as possible prior to EC collection together with maximum EC recovery in S4. For this, the water-extracted filters were analysed with the peak S2 temperature varying from 425 °C to 600 °C with a fixed peak S3 temperature of 650 °C. Figure 5 illustrates the carbon fractions released in each step as a function of peak temperatures in S2. During these analyses, the carbon amounts measured in S1 was found to be reproducible, suggesting a high reproducibility of the water- extraction treatment and the stability of the instrument. At a higher temperature, more refractory OC and non-rEC are lost before S4, while charring during the analysis is reduced from 6 % to ~ 0 %. Thus, with a higher S2 temperature there is less probability for residues of refractory and charred OC in the final fraction which minimises the bias from the positive artefact (i.e. remaining OC) on the f_M of the EC recovered in S4. However, the EC yield decreases substantially with increasing S2 temperature, which also distorts $f_M(\text{EC})$, as this enhances the bias from the negative artefact (i.e. losses of wood-burning EC). Moreover, the higher S2 temperature the lower the EC yield, which directly influences radiocarbon measurements of EC in terms of uncertainties and detection limits.

Therefore, the extent of the bias of ^{14}C measurement of EC ($\Delta f_M(\text{EC})$) can be estimated as the sum of two contributions:

$$\Delta(f_M(\text{EC})) = \Delta(f_M(\text{EC}))_1 + \Delta(f_M(\text{EC}))_2 \quad (6)$$

17672

Title Page

Abstract

Introduction

Conclusions

References

Tables

Figures

◀

▶

◀

▶

Back

Close

Full Screen / Esc

Printer-friendly Version

Interactive Discussion



where $\Delta f_M(\text{EC})_1$ refers to the bias only due to OC charring and pre-combustion of EC, which are considered as the most important factors influencing EC measurement, and $\Delta f_M(\text{EC})_2$ refers to the bias from the positive artefact due to the residual OC included in EC step.

Due to the aforementioned artefacts, $\Delta f_M(\text{EC})_1$ is dependent on the EC yield and on the percentage of charred carbon ($f\text{ATN}_{\text{char}}$) as well as on the f_M of the charred carbon ($f_M(\text{char})$) and of the isolated EC in S4 ($f_M(\text{EC})$). As a result, all above factors should be taken into account to calculate $\Delta f_M(\text{EC})_1$, as in the below Eq. (7):

$$\Delta(f_M(\text{EC}))_1 = \frac{f_M(\text{char}) \times f\text{ATN}_{\text{char}} + f_M(\text{EC}) \times (\text{EC yield})}{(f\text{ATN}_{\text{char}} + (\text{EC yield})) \times f_M(\text{EC})} - 1 \quad (7)$$

$\Delta f_M(\text{EC})_1$ can be reduced to less than $\sim 5\%$ if the peak S2 temperature is higher than 450°C , assuming that the ^{14}C content of charred carbon is three times as much as that in EC (e.g. $f_M(\text{charred OC}) = 0.6$, $f_M(\text{EC}) = 0.2$), which is reasonable as indicated below in Sect. 3.4. Consequently, as the most satisfying compromise between complete evolution of OC and a minimum EC pre-combustion before EC collection, 475°C is chosen as the peak S2 temperature in the Swiss_4S protocol. With this S2 temperature, both charring and pre-combustion of EC are kept at acceptable levels. However, this temperature can be increased up to 525°C in order to guarantee complete OC removal before S4, which may become necessary for a few filters with high OC loading. By analysis of such samples, we observed that EC yields $> 90\%$ after S2 and/or $f\text{ATN}_{\text{char}} > 10\%$ during the analysis, increasing the risk of remaining OC in the EC step (i.e. S4). This risk can be much reduced by increasing the peak S2 temperature from 475°C to maximum 525°C .

3.2.3 Influence of the S3 temperature on OC/EC separation

S3 is carried out in helium to remove OC completely before isolation and collection of EC during S4. Previous studies have demonstrated that the OC/EC split can be

On the isolation of OC and EC

Y. L. Zhang et al.

Title Page

Abstract

Introduction

Conclusions

References

Tables

Figures

◀

▶

◀

▶

Back

Close

Full Screen / Esc

Printer-friendly Version

Interactive Discussion



**On the isolation of
OC and EC**

Y. L. Zhang et al.

[Title Page](#)[Abstract](#)[Introduction](#)[Conclusions](#)[References](#)[Tables](#)[Figures](#)[◀](#)[▶](#)[◀](#)[▶](#)[Back](#)[Close](#)[Full Screen / Esc](#)[Printer-friendly Version](#)[Interactive Discussion](#)

strongly influenced by the peak temperature step in He mode (Conny et al., 2003). Some certain types of OC such as wood smoke do not completely evolve or pyrolyse at low inert-mode temperatures (Novakov and Corrigan, 1995), while the combustion of some EC can be catalytically enhanced by the presence of mineral oxides at high inert-mode temperatures (Fung, 1990). In order to minimise $\Delta f_M(\text{EC})_2$ (Eq. 6), we examined the effect of the peak He temperature (i.e. S3) on the carbon amounts and the ^{14}C content of isolated EC in S4 ($f_M(\text{EC})$). The protocol used for analysis was modified according to the Swiss_4S protocol (see Table 2) with a fixed peak S2 temperature of 475 °C, but with different intermediate steps in S3 (He mode): 450 °C, 550 °C, 650 °C, 700 °C, 750 °C and 850 °C, each of 180s. Figure 6a and b show two typical thermograms obtained by analysing two rural winter samples (MOL and CHI, see Table 1) with considerable contributions from wood burning (Szidat et al., 2007). The transmission signal remains quite stable from 450 °C to 550 °C in S3 and begins increasing slightly when the temperature reaches 650 °C. This shows that carbon evolving below 550 °C is exclusively OC, without any untimely removal of EC. The carbon evolved between 550 °C to 650 °C in S3 can be either pure EC or a combination of EC and remaining OC. Then, after temperature exceeds 700 °C, the transmission signals increases rapidly, indicating substantial premature EC removal. This phenomenon is not only found for these two samples, but also in many other winter samples with large wood-burning contributions (data not shown here). The EC evolving in He during high temperature steps can be either native EC or charred carbon, or a combination of them (Subramanian et al., 2006). However, as the charring is negligible in our method, the transmittance increasing in S3 can only be explained by premature EC losses. Indeed, EC may be catalytically removed by mineral oxides under inert gas conditions even at lower high temperature (Fung, 1990; Wang et al., 2010). In the Swiss_4S protocol, more metal oxides may form upon heating in the presence of pure oxygen in S1 and S2, which may enhance the premature EC losses in S3.

The EC optical yield at 650 °C is about 45 % and 20 % higher than at 850 °C and 700 °C, respectively. As a result, lowering the peak S3 temperature below 850 °C can

**On the isolation of
OC and EC**

Y. L. Zhang et al.

Title Page

Abstract

Introduction

Conclusions

References

Tables

Figures

◀

▶

◀

▶

Back

Close

Full Screen / Esc

Printer-friendly Version

Interactive Discussion



improve the EC recovery substantially by avoiding premature EC losses, and thus ^{14}C results obtained from collected EC in S4 could represent the entire EC better. However, the lower the peak S3 temperature, the higher the possibilities that OC might not totally be removed before S4, so the complete OC removal at a low peak S3 temperature needs to be confirmed. To evaluate a possible bias due to different peak S3 temperatures, samples were analysed by the Swiss_4S protocol with a fixed maximum S2 temperature of 475°C , but with different peak S3 (He mode) temperatures of 550°C , 650°C and 700°C . Additionally, ^{14}C measurements of the CO_2 collected during S4 are also carried out for the samples SOL, MOL and CHI. As illustrated in Fig. 7, $f_{\text{M}}(\text{EC})$ and EC yields decrease by $\sim 15\%$ and $\sim 10\%$ respectively, when the peak S3 temperature increases from 550°C to 650°C . This result implies that a fraction of OC may evolve even after S3 with too low a peak S3 temperature (i.e. 550°C) and is erroneously collected together with native EC in S4, which leads to a positive bias of $f_{\text{M}}(\text{EC})$. Recently, Cavalli et al. (2010) also observed that OC can evolve into He/ O_2 accepted step with a peak He temperature of 550°C such as IMPROVE, thus potentially overestimating EC. However, when the peak S3 temperature is increased from 650°C to 700°C , $f_{\text{M}}(\text{EC})$ does not decrease significantly, while an obvious ($\sim 25\%$) EC yield decrease occurs, corresponding to $\sim 5\%$ uncertainty on the attribution of EC to non-fossil sources. Supposing that the $f_{\text{M}}(\text{EC})$ measured at a peak S3 temperature of 700°C represents the “true” $f_{\text{M}}(\text{EC})$ value, the bias of $f_{\text{M}}(\text{EC})$ ($\Delta f_{\text{M}}(\text{EC})_2$) (Eq. 6, in Sect. 3.2.2) at a peak S3 temperature of 550°C and 650°C imply $\sim 25\%$ and $\sim 5\%$ contaminations to EC, respectively, resulting from OC remaining after S3. However, the higher ^{14}C values of EC obtained with a lower peak S3 temperature (i.e. 550°C and 650°C) could also stem from a better recovery of the biomass-burning EC. In these circumstances, $\sim 25\%$ and $\sim 5\%$ may be the upper limits for OC contamination in native EC at peak S3 temperatures of 550°C and 650°C , respectively. The results demonstrate that the carbon evolving between 650°C and 700°C during S3 is almost exclusively native EC with a maximum 5% OC contamination, corresponding to an accepted uncertainty ($< 5\%$) in $f_{\text{M}}(\text{EC})$. Therefore, 650°C is selected as the peak temperature in S3, the same as

the maximum He temperature in the EUSAAR_2 protocol, which assures that the bias of $f_M(\text{EC})$ due to the positive artefact (i.e. the residual OC slipping into the EC step) is minimised (less than 5%) with a maximum EC yield. However, this temperature may be decreased down to 550 °C for the filters which show substantial EC losses in S3, e.g. due to premature EC evolution caused by catalytic oxidation in the presence of mineral dust (Fung, 1990; Wang et al., 2010). For such samples, we suggest that EC yields should not be lower than ~60%, which may be avoided by decreasing the S3 temperature from 650 °C to minimum 550 °C. In general, the EC recovery amounts to maximum 70–90% in this work, so that the source apportionment of the entire EC is still not quantitative if only EC in S4 is considered.

3.2.4 Comparison of TC, OC and EC concentrations from Swiss_4S with EUSAAR_2

A few particulate matter samples were also analysed by the protocol EUSAAR_2 to perform a first comparison with the present protocol Swiss_4S results on TC, OC and EC concentrations. All filters were water-extracted before their OC/EC determinations. In general, Fig. 8a, b and c shows a very good agreement between both protocols for all fractions, which suggests that the Swiss_4S protocol provide reliable concentrations of OC and EC. Piazzalunga et al. (2011) also demonstrated that the removal of water-soluble compounds from the filter is effective in reducing the differences between different protocols. A more rigorous comparison on a larger number of samples is currently in progress at our laboratory.

3.3 Comparison of ^{14}C results using the Swiss_4S protocol and the THEODORE method

A comparison of the Swiss_4S protocol and the THEODORE method was performed for a few selected filters from the Göteborg 2005/2006 campaign (Szidat et al., 2009). For both methods, OC and EC were recovered on original and water-extracted filters,

On the isolation of OC and EC

Y. L. Zhang et al.

[Title Page](#)[Abstract](#)[Introduction](#)[Conclusions](#)[References](#)[Tables](#)[Figures](#)[◀](#)[▶](#)[◀](#)[▶](#)[Back](#)[Close](#)[Full Screen / Esc](#)[Printer-friendly Version](#)[Interactive Discussion](#)

respectively. The OC concentrations show differences between both methods within < 15 % without any trend (Table 3). Nevertheless, there is no significant difference in the corresponding $f_M(\text{OC})$. Concerning EC, the premature losses of EC during the OC removal before collecting CO_2 increase with increasing peak S2 temperatures in the Swiss_4S protocol and the oven temperatures used in the previous THEODORE method (Fig. 9). For both the Swiss_4S and the THEODORE methods, the decrease in $f_M(\text{EC})$ is linearly associated with the decreasing EC yields. This confirms that non-fossil EC is less refractory than fossil EC, suggesting that the recovered EC cannot fully represent the total EC. Figure 9 also reveals that both methods underestimate the wood-burning contribution, unless the complete EC fraction is taken into account for source apportionment and that the bias increases with decreasing EC recoveries. For this sample (GOT2), a range of ~35 % to ~90 % EC yield leads to a difference of ~0.15 for $f_M(\text{EC})$. f_M of the total EC is estimated by linear extrapolation to 100 % EC yields as 0.22 ± 0.01 and 0.19 ± 0.02 (1σ uncertainties) for the Swiss_4S and the THEODORE methods, respectively. It is speculated that the different fossil and non-fossil contributions in EC may result in a continuum from thermally refractory near-elemental EC to thermally reactive or non-refractory EC.

However, $f_M(\text{EC})$ has not been found to decrease significantly with decreasing EC yields when the different peak S3 (He mode) temperature increases from 650 °C to 700 °C (Fig. 7). This most likely arises from the more rigorous OC removing treatments in an oxidative atmosphere (i.e. S2 in Swiss_4S and oven in THEODORE method) compared to an inert atmosphere (i.e. S3 in Swiss_4S), which may enhance the different behaviour of wood-burning EC compared to fossil EC and favour its untimely removal.

**On the isolation of
OC and EC**

Y. L. Zhang et al.

Title Page

Abstract

Introduction

Conclusions

References

Tables

Figures

◀

▶

◀

▶

Back

Close

Full Screen / Esc

Printer-friendly Version

Interactive Discussion



3.4 The optimal strategy of radiocarbon-based source apportionment of carbonaceous aerosols

3.4.1 Considerations of total EC

According to the separation scheme shown in Fig. 2, different carbon fractions of two aerosol samples (GOT2 and GOT3) were isolated for ^{14}C determination using the Swiss-4S protocol. As illustrated in Fig. 10, measurements of TC alone cannot provide a comprehensive and reliable identification of emission sources of carbonaceous aerosol. The individual different carbon fractions differ in chemical properties and origin, as indicated by their ^{14}C measurements. The distinction between WSOC and WINSOC shows a significantly higher fossil contribution for the water-insoluble fraction. WSOC is nearly on the contemporary level, suggesting that secondary organic aerosol (SOA) is mainly formed from biogenic VOCs in the studied area, as WSOC aerosol is thought to be a good proxy for SOA (Weber et al., 2007; Jimenez et al., 2009). Consequently, OC should be separated into WSOC and WINSOC fractions to better understand its sources.

Moreover, the experiments above demonstrate the lower refractivity of wood-burning EC compared to fossil EC and the difficulty of clearly isolating EC without premature evolution of EC. For an optimal ^{14}C -based source apportionment of carbonaceous aerosols, and particularly of EC, the whole amount of EC has to be taken into account to quantify its fossil vs. non-fossil contributions. Indeed, total EC (tEC) consists not only of rEC recovered in S4, but also of non-rEC evolved in S2 and S3. Therefore, not only the characteristic of the rEC in S4, but also that of non-rEC evolving during S2 and S3 should be investigated. As shown in Figs. 2 and 10, the most refractory WINSOC and non-rEC, which are volatilized simultaneously due to their overlapping thermal properties, can also be recovered for ^{14}C analysis. To estimate the ^{14}C content of non-rEC from this mixture, we determined OC and EC filter concentrations using the EUSAAR_2 protocol and assumed that the refractory WINSOC has the same ^{14}C value (within 5% uncertainty) as the WINSOC from S1.

On the isolation of OC and EC

Y. L. Zhang et al.

Title Page

Abstract

Introduction

Conclusions

References

Tables

Figures

◀

▶

◀

▶

Back

Close

Full Screen / Esc

Printer-friendly Version

Interactive Discussion



**On the isolation of
OC and EC**

Y. L. Zhang et al.

Title Page

Abstract

Introduction

Conclusions

References

Tables

Figures

I◀

▶I

◀

▶

Back

Close

Full Screen / Esc

Printer-friendly Version

Interactive Discussion



Following this isotope-mass balance, $f_M(\text{non-rEC})$ amounts to 0.23 ± 0.07 and 0.27 ± 0.08 for the GOT2 and GOT3 samples, respectively. This is $\sim 30\%$ higher than the $f_M(\text{rEC})$ measured from S4 (0.17 ± 0.01 and 0.18 ± 0.01 , respectively). Correspondingly, $f_M(\text{tEC})$ amounts to 0.18 ± 0.04 and 0.19 ± 0.04 , respectively, for these two samples, which is $\sim 6\%$ higher than the corresponding $f_M(\text{rEC})$. Similar results are also found for the other samples shown in Table 4. Moreover, for the GOT2 sample analysed with the Swiss_4S protocol and the THEODORE method, the $f_M(\text{tEC})$ values from the isotope-mass balance are consistent, within uncertainties, with the extrapolations to the corresponding 100% EC yield (Fig. 9). Although the deviations of the ^{14}C determinations of rEC and tEC are not statistically significant for the individual samples, Figs. 9, 10 and Table 4 suggest a general trend towards an underestimation of EC from wood and/or biomass burning for both methods. As shown above, this trend strongly depends on the EC recovery and, moreover, probably on the sample types. Therefore, refractory WINSOC and non-rEC (S2 and S3), as well as OC (S1) and rEC (S4), should also be isolated with the Swiss_4S protocol for subsequent ^{14}C measurements, at least for a few selected samples from a dedicated campaign, in order to get a comprehensive picture of the fossil and contemporary sources of carbonaceous aerosols (see Fig. 10). As for the solely thermal methods (i.e. the THEODORE method), the f_M value of total EC may be derived from measurements of $f_M(\text{EC})$ for different oven temperatures and the extrapolation to 100% EC yield for selected samples similar to Fig. 9 (see Fig. S1). Moreover, we recommend that ^{14}C results of EC should in general be reported together with the EC recovery, because the recovered EC may not fully represent the total EC. In the Supplement (Fig. S1 and Table S1), we compile EC yields of $f_M(\text{EC})$ determinations from earlier studies (Szidat et al., 2004b, 2006, 2007, 2009; Sandradewi et al., 2008a,b; Aiken et al., 2010; Hodzic et al., 2010; Minguillón et al., 2011; Perron et al., 2010) with estimations of f_M values of total EC ($f_M(\text{tEC})$) by extrapolation to 100% EC yield.

3.4.2 Mass closure for OC

For ^{14}C measurement of OC, untreated filters were analysed with the Swiss_4S protocol and the CO_2 evolving from S1 (accounting for 75–85 % of total OC) was recovered. The unrecovered OC can correspond to charred OC formed during S1 and to refractory OC which cannot be released under S1 temperature (375 °C). Using the isotope-mass balance (total OC = WSOC + non-refractory WINSOC + refractory WINSOC), the f_M values of total OC are calculated to be 0.86 ± 0.02 and 0.74 ± 0.02 for samples MOL and GOT3, respectively. These values are consistent with the values measured from OC isolated in S1, i.e. 0.88 ± 0.01 and 0.72 ± 0.01 , respectively. This suggests that charring and un-evolved refractory OC during S1 do not alter the ^{14}C signatures of the total OC significantly. However, this should be evaluated carefully for each sample, particularly if the loading of OC is too low or the amount of charred OC is too high.

4 Conclusions

A detailed study has been performed to establish a new thermal-optical protocol to isolate the carbon fractions of interest (i.e. OC and EC) for ^{14}C measurement. To minimise OC charring, untimely removal of EC and the potential positive artefacts leading to co-evolution of EC with residual OC, the Swiss_4S protocol has been developed by optimising thermal-optical conditions, in particular the heating program and the choice of the carrier gas. This optimised Swiss_4S protocol involves the following consecutive four steps: (1) S1 in O_2 at 375 °C for isolation of OC (untreated filters) or WINSOC (water-extracted filters) without premature EC evolution; (2) S2 in O_2 at 475 °C followed by (3) S3 in He at 650 °C, the same as the peak temperature in the EUSAAR_2 protocol; and (4) S4 in O_2 at 760 °C for recovering the remaining EC. For few special samples, these parameters may need to be optimised: the S2 peak temperature may be increased up to 525 °C for filters with high OC loading in order to make sure that OC is removed completely before S4; the S3 peak temperature may be decreased

On the isolation of OC and EC

Y. L. Zhang et al.

Title Page

Abstract

Introduction

Conclusions

References

Tables

Figures

◀

▶

◀

▶

Back

Close

Full Screen / Esc

Printer-friendly Version

Interactive Discussion



down to 550 °C for samples with an extraordinary mineral dust contribution in order to prevent too large EC losses before S4. It is noteworthy that the water-extraction treatment prior to any thermal treatment is an essential prerequisite for EC isolation and its subsequent radiocarbon analysis, as this substantially reduces charring by removal of water-soluble organic and inorganic compounds. Otherwise the non-fossil contribution due to the positive bias from charring could be potentially overestimated. A good agreement on OC and EC concentrations has been found between the Swiss_4S and the EUSAAR_2 protocols applied to some water-extracted samples.

The ^{14}C analysis of isolated OC from S1 and EC from S4 using the Swiss_4S protocol concerns ~ 80 % of total OC and total EC, which already gives a good indication of the OC and EC sources. However, the full information about all the emissions cannot be based on ^{14}C analysis of OC and EC only. On the one hand, OC should be separated into WSOC and WINSOC fractions to better understand its sources, because the water-insoluble fraction has a significantly higher fossil contribution. On the other hand, due to the lower refractivity of wood-burning EC compared to fossil EC, the former fraction tends to co-evolve with refractory OC during thermal treatment. Therefore, ^{14}C analysis of EC in S4 alone may underestimate the wood-burning contribution, and thus a simplified technique of complete EC isolation for ^{14}C analysis is not optimal. Consequently, the best strategy for radiocarbon-based source apportionment of carbonaceous aerosols involves a subdivision of TC into carbon fractions of different chemical and physical properties. To better perform ^{14}C -based source apportionment of carbonaceous aerosols, the Swiss_4S protocol is not only implemented to determine ^{14}C content not only in OC and rEC fractions but also WINSOC as well as a continuum of refractory OC and non-rEC. In addition, WSOC can be determined by subtraction of the water-soluble fraction of TC from untreated TC. For the solely thermal methods (i.e. the THEODORE method), the f_{M} value of total EC can be derived from measurements of $f_{\text{M}}(\text{EC})$ for different oven temperatures durations and the extrapolation to 100 % EC yield for selected samples. Moreover, we recommend that ^{14}C results of EC should in general be reported together with the EC yield.

**On the isolation of
OC and EC**

Y. L. Zhang et al.

Title Page

Abstract

Introduction

Conclusions

References

Tables

Figures

◀

▶

◀

▶

Back

Close

Full Screen / Esc

Printer-friendly Version

Interactive Discussion



Supplementary material related to this article is available online at:
[http://www.atmos-chem-phys-discuss.net/12/17657/2012/
acpd-12-17657-2012-supplement.pdf](http://www.atmos-chem-phys-discuss.net/12/17657/2012/acpd-12-17657-2012-supplement.pdf).

Acknowledgements. This work was supported by the Swiss Federal Office for the Environment (FOEN) and the Swiss Cantons Solothurn, Ticino and beider Basel. M.C. Minguillón was funded by the Spanish Programa Nacional de Movilidad de Recursos Humanos del Plan Nacional de I-D+I 2008–2011 and by the JAE-Doc CSIC program, co-funded by the European Social Fund (ESF).

References

- Aiken, A. C., Salcedo, D., Cubison, M. J., Huffman, J. A., DeCarlo, P. F., Ulbrich, I. M., Docherty, K. S., Sueper, D., Kimmel, J. R., Worsnop, D. R., Trimborn, A., Northway, M., Stone, E. A., Schauer, J. J., Volkamer, R. M., Fortner, E., de Foy, B., Wang, J., Laskin, A., Shutthanandan, V., Zheng, J., Zhang, R., Gaffney, J., Marley, N. A., Paredes-Miranda, G., Arnott, W. P., Molina, L. T., Sosa, G., and Jimenez, J. L.: Mexico City aerosol analysis during MILAGRO using high resolution aerosol mass spectrometry at the urban supersite (T0) – Part 1: Fine particle composition and organic source apportionment, *Atmos. Chem. Phys.*, 9, 6633–6653, doi:10.5194/acp-9-6633-2009, 2009.
- Andreae, M. O. and Gelencsér, A.: Black carbon or brown carbon? The nature of light-absorbing carbonaceous aerosols, *Atmos. Chem. Phys.*, 6, 3131–3148, doi:10.5194/acp-6-3131-2006, 2006.
- Birch, M. E. and Cary, R. A.: Elemental carbon-based method for monitoring occupational exposures to particulate diesel exhaust, *Aerosol Sci. Technol.*, 25, 221–241, 1996.
- Bond, T. C. and Bergstrom, R. W.: Light absorption by carbonaceous particles: an investigative review, *Aerosol Sci. Technol.*, 40, 27–67, doi:10.1080/02786820500421521, 2006.
- Cachier, H., Bremond, M. P., and Buat-Menard, P.: Determination of atmospheric soot carbon with a simple thermal method, *Tellus B*, 41, 379–390, 1989.
- Cadle, S. H., Groblicki, P. J., and Stroup, D. P.: Automated carbon analyzer for particulate samples, *Anal. Chem.*, 52, 2201–2206, 1980.

On the isolation of OC and EC

Y. L. Zhang et al.

Title Page

Abstract

Introduction

Conclusions

References

Tables

Figures

◀

▶

◀

▶

Back

Close

Full Screen / Esc

Printer-friendly Version

Interactive Discussion



**On the isolation of
OC and EC**

Y. L. Zhang et al.

Title Page

Abstract

Introduction

Conclusions

References

Tables

Figures

◀

▶

◀

▶

Back

Close

Full Screen / Esc

Printer-friendly Version

Interactive Discussion



Calzolai, G., Bernardoni, V., Chiari, M., Fedi, M. E., Lucarelli, F., Nava, S., Riccobono, F., Tacchetti, F., Valli, G., and Vecchi, R.: The new sample preparation line for radiocarbon measurements on atmospheric aerosol at LABEC, *Nucl. Instrum. Meth. B.*, 269, 203–208, 2011.

Castro, L. M., Pio, C. A., Harrison, R. M., and Smith, D. J. T.: Carbonaceous aerosol in urban and rural European atmospheres: estimation of secondary organic carbon concentrations, *Atmos. Environ.*, 33, 2771–2781, 1999.

Cavalli, F., Viana, M., Yttri, K. E., Genberg, J., and Putaud, J.-P.: Toward a standardised thermal-optical protocol for measuring atmospheric organic and elemental carbon: the EUSAAR protocol, *Atmos. Meas. Tech.*, 3, 79–89, doi:10.5194/amt-3-79-2010, 2010.

Chow, J. C., Watson, J. G., Crow, D., Lowenthal, D. H., and Murrifield, T.: Comparison of IMPROVE and NIOSH carbon measurements, *Aerosol Sci. Technol.*, 34, 23–34, 2001.

Chow, J. C., Watson, J. G., Chen, L. W. A., Arnott, W. P., Moosmüller, H., and Fung, K.: Equivalence of elemental carbon by thermal/optical reflectance and transmittance with different temperature protocols, *Environ. Sci. Technol.*, 38, 4414–4422, 2004.

Conny, J. M., Klinedinst, D. B., Wight, S. A., and Paulsen, J. L.: Optimizing thermal-optical methods for measuring atmospheric elemental (black) carbon: a response surface study, *Aerosol Sci. Technol.*, 37, 703–723, 2003.

Currie, L. A.: Evolution and multidisciplinary frontiers of ^{14}C aerosol science, *Radiocarbon*, 42, 115–126, 2000.

Currie, L. A., Benner, B. A., Kessler, J. D., Klinedinst, D. B., Klouda, G. A., Marolf, J. V., Slater, J. F., Wise, S. A., Cachier, H., Cary, R., Chow, J. C., Watson, J., Druffel, E. R. M., Masiello, C. A., Eglinton, T. I., Pearson, A., Reddy, C. M., Gustafsson, Ö., Quinn, J. G., Hartmann, P. C., Hedges, J. I., Prentice, K. M., Kirchstetter, T. W., Novakov, T., Puxbaum, H., and Schmid, H.: A critical evaluation of interlaboratory data on total, elemental, and isotopic carbon in the carbonaceous particle reference material, NIST SRM 1649a, *J. Res. Natl. Inst. Stan.*, 107, 279–298, 2002.

Elmqvist, M., Cornelissen, G., Kukulska, Z., and Gustafsson, Ö.: Distinct oxidative stabilities of char versus soot black carbon: implications for quantification and environmental recalcitrance, *Global Biogeochem. Cy.*, 20, GB2009, doi:10.1029/2005GB002629, 2006.

Fermo, P., Piazzalunga, A., Vecchi, R., Valli, G., and Ceriani, M.: A TGA/FT-IR study for measuring OC and EC in aerosol samples, *Atmos. Chem. Phys.*, 6, 255–266, doi:10.5194/acp-6-255-2006, 2006.

**On the isolation of
OC and EC**

Y. L. Zhang et al.

Title Page

Abstract

Introduction

Conclusions

References

Tables

Figures

◀

▶

◀

▶

Back

Close

Full Screen / Esc

Printer-friendly Version

Interactive Discussion



- Fung, K.: Particulate carbon speciation by MNO_2 oxidation, *Aerosol Sci. Technol.*, 12, 122–127, 1990.
- Gundel, L. A., Dod, R. L., Rosen, H., and Novakov, T.: The relationship between optical attenuation and black carbon concentration for ambient and source particles, *Sci. Tot. Environ.*, 36, 197–202, 1984.
- 5 Gustafsson, Ö., Bucheli, T. D., Kukulska, Z., Andersson, M., Largeau, C., Rouzaud, J.-N., Reddy, C. M., and Eglinton, T. I.: Evaluation of a protocol for the quantification of black carbon in sediments, *Global Biogeochem. Cy.*, 15, 881–890, 2001.
- Highwood, E. J. and Kinnersley, R. P.: When smoke gets in our eyes: the multiple impacts of atmospheric black carbon on climate, air quality and health, *Environ. Int.*, 32, 560–566, 2006.
- Hodzic, A., Jimenez, J. L., Prévôt, A. S. H., Szidat, S., Fast, J. D., and Madronich, S.: Can 3-D models explain the observed fractions of fossil and non-fossil carbon in and near Mexico City?, *Atmos. Chem. Phys.*, 10, 10997–11016, doi:10.5194/acp-10-10997-2010, 2010.
- 15 Iwatsuki, M., Kyotani, T., and Matsubara, K.: Fractional determination of elemental carbon and total soluble and insoluble organic compounds in airborne particulate matter by thermal analysis combined with extraction and heavy liquid separation, *Anal. Sci.*, 14, 321–326, 1998.
- Jimenez, J. L., Canagaratna, M. R., Donahue, N. M., Prevot, A. S. H., Zhang, Q., Kroll, J. H., DeCarlo, P. F., Allan, J. D., Coe, H., Ng, N. L., Aiken, A. C., Docherty, K. S., Ulbrich, I. M., Grieshop, A. P., Robinson, A. L., Duplissy, J., Smith, J. D., Wilson, K. R., Lanz, V. A., Hueglin, C., Sun, Y. L., Tian, J., Laaksonen, A., Raatikainen, T., Rautiainen, J., Vaattovaara, P., Ehn, M., Kulmala, M., Tomlinson, J. M., Collins, D. R., Cubison, M. J., Dunlea, E. J., Huffman, J. A., Onasch, T. B., Alfarra, M. R., Williams, P. I., Bower, K., Kondo, Y., Schneider, J., Drewnick, F., Borrmann, S., Weimer, S., Demerjian, K., Salcedo, D., Cottrell, L., Griffin, R., Takami, A., Miyoshi, T., Hatakeyama, S., Shimojo, A., Sun, J. Y., Zhang, Y. M., Dzepina, K., Kimmel, J. R., Sueper, D., Jayne, J. T., Herndon, S. C., Trimborn, A. M., Williams, L. R., Wood, E. C., Middlebrook, A. M., Kolb, C. E., Baltensperger, U., and Worsnop, D. R.: Evolution of organic aerosols in the atmosphere, *Science*, 326, 1525–1529, doi:10.1126/science.1180353, 2009.
- 20 Lanz, V. A., Prévôt, A. S. H., Alfarra, M. R., Weimer, S., Mohr, C., DeCarlo, P. F., Gianini, M. F. D., Hueglin, C., Schneider, J., Favez, O., D'Anna, B., George, C., and Baltensperger, U.: Characterization of aerosol chemical composition with aerosol mass spectrometry in Central
- 25
- 30

**On the isolation of
OC and EC**

Y. L. Zhang et al.

Title Page

Abstract

Introduction

Conclusions

References

Tables

Figures

◀

▶

◀

▶

Back

Close

Full Screen / Esc

Printer-friendly Version

Interactive Discussion



Europe: an overview, *Atmos. Chem. Phys.*, 10, 10453–10471, doi:10.5194/acp-10-10453-2010, 2010.

Lavanchy, V. M. H., Gäggeler, H. W., Schotterer, U., Schwikowski, M., and Baltensperger, U.: Historical record of carbonaceous particle concentrations from a European high-alpine glacier (Colle Gnifetti, Switzerland), *J. Geophys. Res.*, D104, 21227–21236, 1999.

Levin, I., Naegler, T., Kromer, B., Diehl, M., Francey, R. J., Gomez-Pelaez, A. J., Steele, L. P., Wagenbach, D., Weller, R., and Worthy, D. E.: Observations and modelling of the global distribution and long-term trend of atmospheric $^{14}\text{CO}_2$, *Tellus B*, 62, 26–46, 2010.

Mauderly, J. L. and Chow, J. C.: Health effects of organic aerosols, *Inhal. Toxicol.*, 20, 257–288, 2008.

Mayol-Bracero, O. L., Guyon, P., Graham, B., Roberts, G., Andreae, M. O., Decesari, S., Facchini, M. C., Fuzzi, S., and Artaxo, P.: Water-soluble organic compounds in biomass burning aerosols over Amazonia – 2. Apportionment of the chemical composition and importance of the polyacidic fraction, *J. Geophys. Res.*, 107, 8091, doi:10.1029/2001JD000522, 2002.

Minguillón, M. C., Perron, N., Querol, X., Szidat, S., Fahrni, S. M., Alastuey, A., Jimenez, J. L., Mohr, C., Ortega, A. M., Day, D. A., Lanz, V. A., Wacker, L., Reche, C., Cusack, M., Amato, F., Kiss, G., Hoffer, A., Decesari, S., Moretti, F., Hillamo, R., Teinilä, K., Seco, R., Peñuelas, J., Metzger, A., Schallhart, S., Müller, M., Hansel, A., Burkhardt, J. F., Baltensperger, U., and Prévôt, A. S. H.: Fossil versus contemporary sources of fine elemental and organic carbonaceous particulate matter during the DAURE campaign in Northeast Spain, *Atmos. Chem. Phys.*, 11, 12067–12084, doi:10.5194/acp-11-12067-2011, 2011.

Mohn, J., Szidat, S., Fellner, J., Rechberger, H., Quartier, R., Buchmann, B., and Emmenegger, L.: Determination of biogenic and fossil CO_2 emitted by waste incineration based on $^{14}\text{CO}_2$ and mass balances, *Bioresource Technol.*, 99, 6471–6479, doi:10.1016/j.biortech.2007.11.042, 2008.

Novakov, T. and Corrigan, C. E.: Thermal characterization of biomass smoke particles, *Mikrochim. Acta*, 119, 157–166, 1995.

Perron, N., Sandradewi, J., Alfarra, M. R., Lienemann, P., Gehrig, R., Kasper-Giebl, A., Lanz, V. A., Szidat, S., Ruff, M., Fahrni, S., Wacker, L., Baltensperger, U., and Prévôt, A. S. H.: Composition and sources of particulate matter in an industrialised Alpine valley, *Atmos. Chem. Phys. Discuss.*, 10, 9391–9430, doi:10.5194/acpd-10-9391-2010, 2010.

**On the isolation of
OC and EC**

Y. L. Zhang et al.

[Title Page](#)[Abstract](#)[Introduction](#)[Conclusions](#)[References](#)[Tables](#)[Figures](#)[◀](#)[▶](#)[◀](#)[▶](#)[Back](#)[Close](#)[Full Screen / Esc](#)[Printer-friendly Version](#)[Interactive Discussion](#)

Phuah, C. H., Peterson, M. R., Richards, M. H., Turner, J. H., and Dillner, A. M.: A temperature calibration procedure for the sunset laboratory carbon aerosol analysis lab instrument, *Aerosol Sci. Technol.*, 43, 1013–1021, 2009.

Piazzalunga, A., Bernardoni, V., Fermo, P., Valli, G., and Vecchi, R.: Technical Note: On the effect of water-soluble compounds removal on EC quantification by TOT analysis in urban aerosol samples, *Atmos. Chem. Phys.*, 11, 10193–10203, doi:10.5194/acp-11-10193-2011, 2011.

Pöschl, U.: Atmospheric aerosols: composition, transformation, climate and health effects, *Angew. Chem. Int. Edit*, 44, 7520–7540, 2005.

Ruff, M., Wacker, L., Gaggeler, H. W., Suter, M., Synal, H. A., and Szidat, S.: A gas ion source for radiocarbon measurements at 200 kV, *Radiocarbon*, 49, 307–314, 2007.

Ruff, M., Szidat, S., Gaggeler, H. W., Suter, M., Synal, H.-A., and Wacker, L.: Gaseous radiocarbon measurements of small samples, *Nucl. Instrum. Meth. B*, 268, 790–794, doi:10.1016/j.nimb.2009.10.032, 2010.

Schauer, J. J., Mader, B. T., Deminter, J. T., Heidemann, G., Bae, M. S., Seinfeld, J. H., Flanagan, R. C., Cary, R. A., Smith, D., Huebert, B. J., Bertram, T., Howell, S., Kline, J. T., Quinn, P., Bates, T., Turpin, B., Lim, H. J., Yu, J. Z., Yang, H., and Keywood, M. D.: ACE-Asia inter-comparison of a thermal-optical method for the determination of particle-phase organic and elemental carbon, *Environ. Sci. Technol.*, 37, 993–1001, 2003.

Schmid, H., Laskus, L., Abraham, H. J., Baltensperger, U., Lavanchy, V., Bizjak, M., Burba, P., Cachier, H., Crow, D., Chow, J., Gnauk, T., Even, A., ten Brink, H. M., Giesen, K. P., Hitzenberger, R., Hueglin, C., Maenhaut, W., Pio, C., Carvalho, A., Putaud, J. P., Toom-Sauntry, D., and Puxbaum, H.: Results of the “carbon conference” international aerosol carbon round robin test stage I, *Atmos. Environ.*, 35, 2111–2121, 2001.

Sandradewi, J., Prévôt, A. S. H., Szidat, S., Perron, N., Alfarra, M. R., Lanz, V. A., Weingartner, E., and Baltensperger, U.: Using aerosol light absorption measurements for the quantitative determination of wood burning and traffic emission contributions to particulate matter, *Environ. Sci. Technol.*, 42, 3316–3323, doi:10.1021/es702253m, 2008a.

Sandradewi, J., Prévôt, A. S. H., Alfarra, M. R., Szidat, S., Wehrli, M. N., Ruff, M., Weimer, S., Lanz, V. A., Weingartner, E., Perron, N., Caseiro, A., Kasper-Giebl, A., Puxbaum, H., Wacker, L., and Baltensperger, U.: Comparison of several wood smoke markers and source apportionment methods for wood burning particulate mass, *Atmos. Chem. Phys. Discuss.*, 8, 8091–8118, doi:10.5194/acpd-8-8091-2008, 2008b.

- Stuiver, M., and Polach, H. A.: Discussion: reporting of ^{14}C data, *Radiocarbon*, 19, 355–363, 1977.
- Subramanian, R., Khlystov, A. Y., and Robinson, A. L.: Effect of peak inert-mode temperature on elemental carbon measured using thermal-optical analysis, *Aerosol Sci. Technol.*, 40, 763–780, 2006.
- Synal, H. A., Stocker, M., and Suter, M.: MICADAS: A new compact radiocarbon AMS system, *Nucl. Instrum. Meth. B.*, 259, 7–13, 2007.
- Szidat, S.: Sources of Asian haze, *Science*, 323, 470–471, doi:10.1126/science.1169407, 2009.
- Szidat, S., Jenk, T. M., Gaggeler, H. W., Synal, H. A., Hajdas, I., Bonani, G., and Saurer, M.: THEODORE, a two-step heating system for the EC/OC determination of radiocarbon (^{14}C) in the environment, *Nucl. Instrum. Meth. B.*, 223–224, 829–836, doi:10.1016/j.nimb.2004.04.153, 2004a.
- Szidat, S., Jenk, T. M., Gaggeler, H. W., Synal, H. A., Fisseha, R., Baltensperger, U., Kalberer, M., Samburova, V., Wacker, L., Saurer, M., Schwikowski, M., and Hajdas, I.: Source apportionment of aerosols by ^{14}C measurements in different carbonaceous particle fractions, *Radiocarbon*, 46, 475–484, 2004b.
- Szidat, S., Jenk, T. M., Synal, H.-A., Kalberer, M., Wacker, L., Hajdas, I., Kasper-Giebl, A., and Baltensperger, U.: Contributions of fossil fuel, biomass-burning, and biogenic emissions to carbonaceous aerosols in Zurich as traced by ^{14}C , *J. Geophys. Res.*, 111, D07206, doi:10.1029/2005jd006590, 2006.
- Szidat, S., Prevot, A. S. H., Sandradewi, J., Alfara, M. R., Synal, H. A., Wacker, L., and Baltensperger, U.: Dominant impact of residential wood burning on particulate matter in Alpine valleys during winter, *Geophys. Res. Lett.*, 34, L05820, doi:10.1029/2006gl028325, 2007.
- Szidat, S., Ruff, M., Perron, N., Wacker, L., Synal, H.-A., Hallquist, M., Shannigrahi, A. S., Yttri, K. E., Dye, C., and Simpson, D.: Fossil and non-fossil sources of organic carbon (OC) and elemental carbon (EC) in Göteborg, Sweden, *Atmos. Chem. Phys.*, 9, 1521–1535, doi:10.5194/acp-9-1521-2009, 2009.
- Turpin, B. J., Saxena, P., and Andrews, E.: Measuring and simulating particulate organics in the atmosphere: problems and prospects, *Atmos. Environ.*, 34, 2983–3013, 2000.
- Wacker, L., Fahrni, S. M., Hajdas, I., Molnar, M., Synal, H. A., Szidat, S., and Zhang, Y. L.: A versatile gas interface for routine radiocarbon analysis with a gas ion source, *Nucl. Instrum. Meth. B.*, doi:10.1016/j.nimb.2012.1002.1009, in press, 2012.

**On the isolation of
OC and EC**

Y. L. Zhang et al.

Title Page

Abstract

Introduction

Conclusions

References

Tables

Figures

◀

▶

◀

▶

Back

Close

Full Screen / Esc

Printer-friendly Version

Interactive Discussion



On the isolation of OC and EC

Y. L. Zhang et al.

Title Page

Abstract

Introduction

Conclusions

References

Tables

Figures

◀

▶

◀

▶

Back

Close

Full Screen / Esc

Printer-friendly Version

Interactive Discussion



- Weber, R. J., Sullivan, A. P., Peltier, R. E., Russell, A., Yan, B., Zheng, M., de Gouw, J., Warneke, C., Brock, C., Holloway, J. S., Atlas, E. L., and Edgerton, E.: A study of secondary organic aerosol formation in the anthropogenic-influenced Southeastern United States, *J. Geophys. Res.*, 112, D13302, doi:10.1029/2007jd008408, 2007.
- 5 Yang, H. and Yu, J. Z.: Uncertainties in charring correction in the analysis of elemental and organic carbon in atmospheric particles by thermal/optical methods, *Environ. Sci. Technol.*, 36, 5199–5204, 2002.
- Yu, J. Z., Xu, J., and Yang, H.: Charring characteristics of atmospheric organic particulate matter in thermal analysis, *Environ. Sci. Technol.*, 36, 754–761, 2002.
- 10 Zencak, Z., Elmquist, M., and Gustafsson, Ö.: Quantification and radiocarbon source apportionment of black carbon in atmospheric aerosols using the CTO-375 method, *Atmos. Environ.*, 41, 7895–7906, 2007.
- Zhang, Y. L., Liu, D., Shen, C. D., Ding, P., and Zhang, G.: Development of a preparation system for the radiocarbon analysis of organic carbon in carbonaceous aerosols in China, *Nucl. Instrum. Meth. B.*, 268, 2831–2834, doi:10.1016/j.nimb.2010.06.032, 2010.
- 15

On the isolation of OC and EC

Y. L. Zhang et al.

Title Page

Abstract

Introduction

Conclusions

References

Tables

Figures

◀

▶

◀

▶

Back

Close

Full Screen / Esc

Printer-friendly Version

Interactive Discussion



Table 1. Information on the filters analysed in this study.

Location	Site type	Filter code	Sampling period	Size-cut
Göteborg*	Urban	GOT1	11–14 Feb 2005	PM ₁₀
		GOT2	25 Feb–4 Mar 2005	PM ₁₀
		GOT3	13–20 Jun 2006	PM _{2.5}
Råö*	Rural	RAO	18–25 Feb 2005	PM _{2.5}
Zurich	Urban	ZUR1	19 Dec 2007	PM ₁₀
		ZUR2	20 Dec 2007	PM ₁₀
		ZUR3	5 Feb 2009	PM ₁₀
Chiasso	Urban	CHI	9 Jan 2008	PM ₁₀
Solothurn	Urban	SOL	5 Feb 2009	PM ₁₀
Moleno	Rural	MOL	10 Jan 2009	PM ₁₀
Bern	Urban	BER	14 Jan 2009	PM ₁₀
Magadino	Rural	MAG	14 Jan 2009	PM ₁₀
Sissach	Suburban	SIS	5 Feb 2009	PM ₁₀

* Szidat et al. (2009)

On the isolation of OC and EC

Y. L. Zhang et al.

Title Page	
Abstract	Introduction
Conclusions	References
Tables	Figures
◀	▶
◀	▶
Back	Close
Full Screen / Esc	
Printer-friendly Version	
Interactive Discussion	

Table 2. Parameters (carrier gas, temperature set point and duration) of the Swiss_4S protocol compared to the EUSAAR_2, modified NIOSH and IMPROVE protocols.

Step	Swiss_4S (This study)	EUSAAR_2	Modified NIOSH	IMPROVE
	Gas, T/°C, t/s	Gas, T/°C, t/s	Gas, T/°C, t/s	Gas, T/°C, t/s
S1	O ₂ , 180, 50	He, 200, 120	He, 310, 60	He, 120, 150–580 ^d
	O ₂ , 375, 150	He, 300, 150	He, 475, 60	He, 250, 150–580
S2	O ₂ , 475 ^a , 120	–	–	–
S3	He, 450, 180	He, 450, 180	He, 615, 60	He, 450, 150–580
	He, 650 ^b , 180	He, 650, 180	He, 840, 90	He, 550, 150–580
S4	O ₂ , 500, 120	He/O ₂ ^c , 500, 120	He/O ₂ ^c , 550, 35	O ₂ , 550, 150–580
	O ₂ , 760, 150	He/O ₂ , 550, 120	He/O ₂ , 850, 105	O ₂ , 700, 150–580
		He/O ₂ , 700, 70		O ₂ , 800, 150–580
		He/O ₂ , 850, 80		

^a The temperatures in S2 in the Swiss_4S protocol are tested from 425–650 °C for optimisation.

^b The temperatures in S3 in the Swiss_4S protocol are tested from 550–850 °C for optimisation.

^c 2% oxygen in helium.

^d The residence time at each temperature in the IMPROVE protocol depends on when the detector signal returns to the baseline to achieve well-defined carbon fractions.



On the isolation of OC and EC

Y. L. Zhang et al.

Table 3. Comparisons of the carbon masses ($m(\text{OC})$) and fraction of modern of OC ($f_{\text{M}}(\text{OC})$) obtained with the present thermal-optical method (Swiss_4S) and thermal method (THEODORE).

Sample	Swiss_4S		THEODORE	
	$m(\text{OC}) \mu\text{g cm}^{-2}$	$f_{\text{M}}(\text{OC})$	$m(\text{OC}) \mu\text{g cm}^{-2}$	$f_{\text{M}}(\text{OC})$
GOT1	13.7 ± 0.4	0.74 ± 0.02	15.7 ± 0.4	0.74 ± 0.02
GOT2	61.6 ± 1.3	0.64 ± 0.01	54.8 ± 1.5	0.67 ± 0.02
GOT3	19.4 ± 0.4	0.72 ± 0.01	19.6 ± 0.5	0.73 ± 0.01

[Title Page](#)
[Abstract](#)
[Introduction](#)
[Conclusions](#)
[References](#)
[Tables](#)
[Figures](#)
[I◀](#)
[▶I](#)
[◀](#)
[▶](#)
[Back](#)
[Close](#)
[Full Screen / Esc](#)
[Printer-friendly Version](#)
[Interactive Discussion](#)


On the isolation of OC and EC

Y. L. Zhang et al.

Table 4. EC yield and fraction of modern (f_M) of the refractory EC (rEC), non-refractory EC (non-rEC) and total EC (tEC).

Sample	$f_M(\text{rEC})^a$	$f_M(\text{non-rEC})^b$	$f_M(\text{tEC})^b$	EC yield rEC/tEC
GOT2	0.17 ± 0.01	0.23 ± 0.07	0.18 ± 0.04	0.80 ± 0.06
GOT3	0.18 ± 0.01	0.27 ± 0.08	0.19 ± 0.04	0.76 ± 0.06
SOL	0.33 ± 0.01	0.42 ± 0.06	0.35 ± 0.06	0.74 ± 0.05
ZUR3	0.28 ± 0.01	0.58 ± 0.06	0.35 ± 0.06	0.77 ± 0.05
MAG	0.38 ± 0.01	0.56 ± 0.07	0.42 ± 0.04	0.80 ± 0.05
BER	0.22 ± 0.01	0.35 ± 0.06	0.24 ± 0.04	0.85 ± 0.04
SIS	0.30 ± 0.01	0.36 ± 0.06	0.31 ± 0.06	0.82 ± 0.05

^a rEC: refractory EC as the isolated EC during S4 in the Swiss_4S protocol,

^b non-rEC: non-refractory EC as the EC fractions in S2 and S3 in the Swiss_4S protocol,

^c tEC: total EC = rEC + non-rEC.

Title Page

Abstract

Introduction

Conclusions

References

Tables

Figures

◀

▶

◀

▶

Back

Close

Full Screen / Esc

Printer-friendly Version

Interactive Discussion



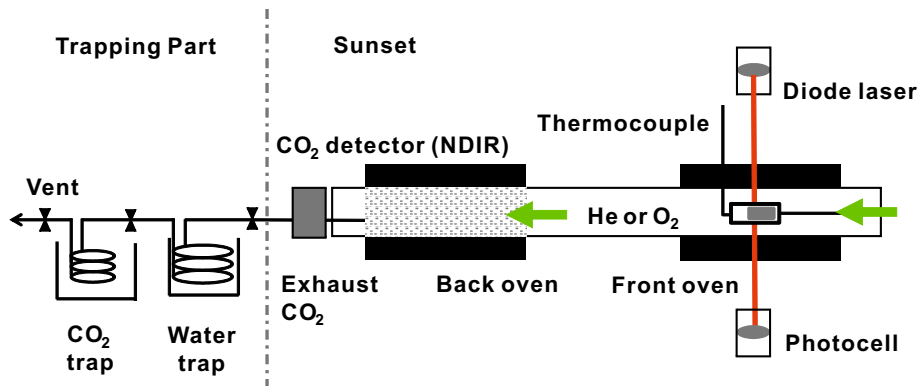


Fig. 1. Set-up of coupling the OC/EC analyser (Sunset) to the cryogenic traps.

On the isolation of OC and EC

Y. L. Zhang et al.

Title Page	
Abstract	Introduction
Conclusions	References
Tables	Figures
◀	▶
◀	▶
Back	Close
Full Screen / Esc	
Printer-friendly Version	
Interactive Discussion	



On the isolation of OC and EC

Y. L. Zhang et al.

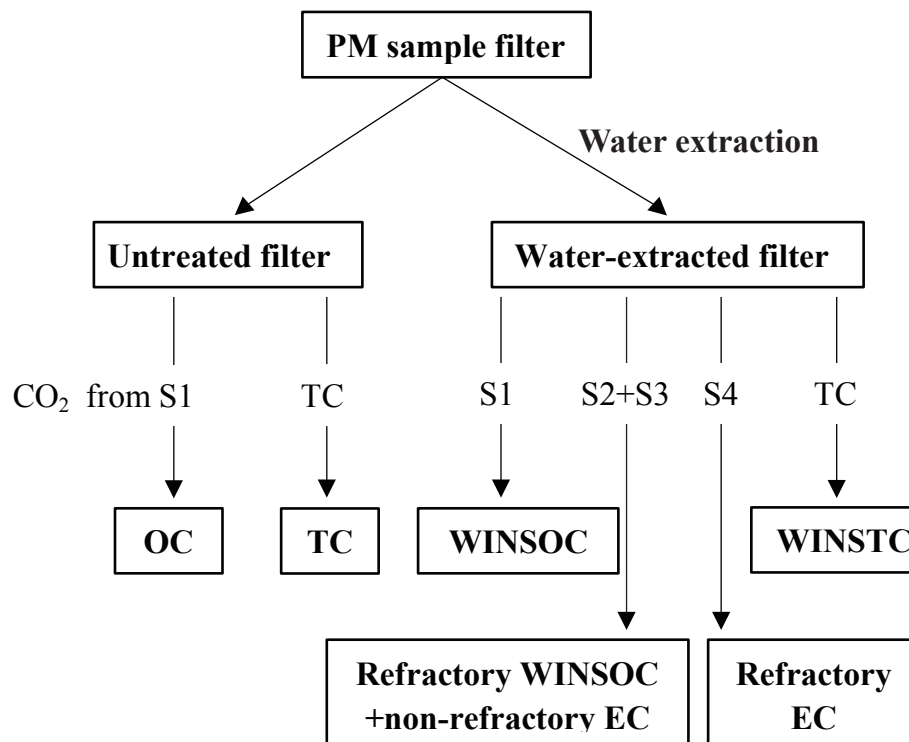


Fig. 2. Separation scheme of the different carbon fractions for ^{14}C measurement. CO_2 is recovered during the desired peak in the individual step (e.g. S1, S2, S3 and/or S4) with the present protocol (Swiss_4S). Step TC means that CO_2 is recovered from all steps without separation.

Title Page

Abstract

Introduction

Conclusions

References

Tables

Figures

◀

▶

◀

▶

Back

Close

Full Screen / Esc

Printer-friendly Version

Interactive Discussion



**On the isolation of
OC and EC**

Y. L. Zhang et al.

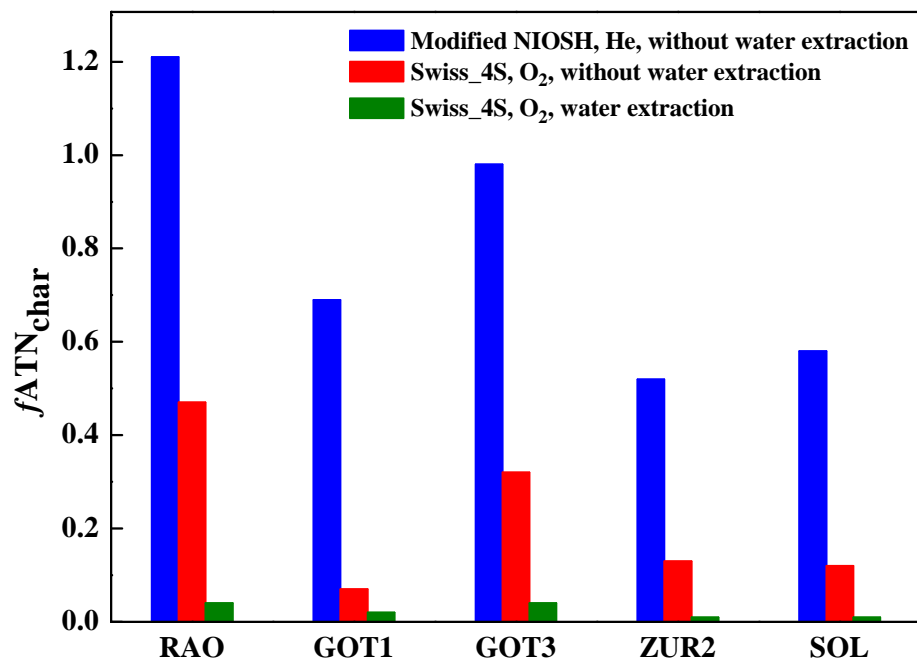


Fig. 3. Fraction of charred OC related to total EC ($f_{ATN_{char}}$) during analysis using different methods for five typical samples.

[Title Page](#)[Abstract](#)[Introduction](#)[Conclusions](#)[References](#)[Tables](#)[Figures](#)[I◀](#)[▶I](#)[◀](#)[▶](#)[Back](#)[Close](#)[Full Screen / Esc](#)[Printer-friendly Version](#)[Interactive Discussion](#)

On the isolation of
OC and EC

Y. L. Zhang et al.

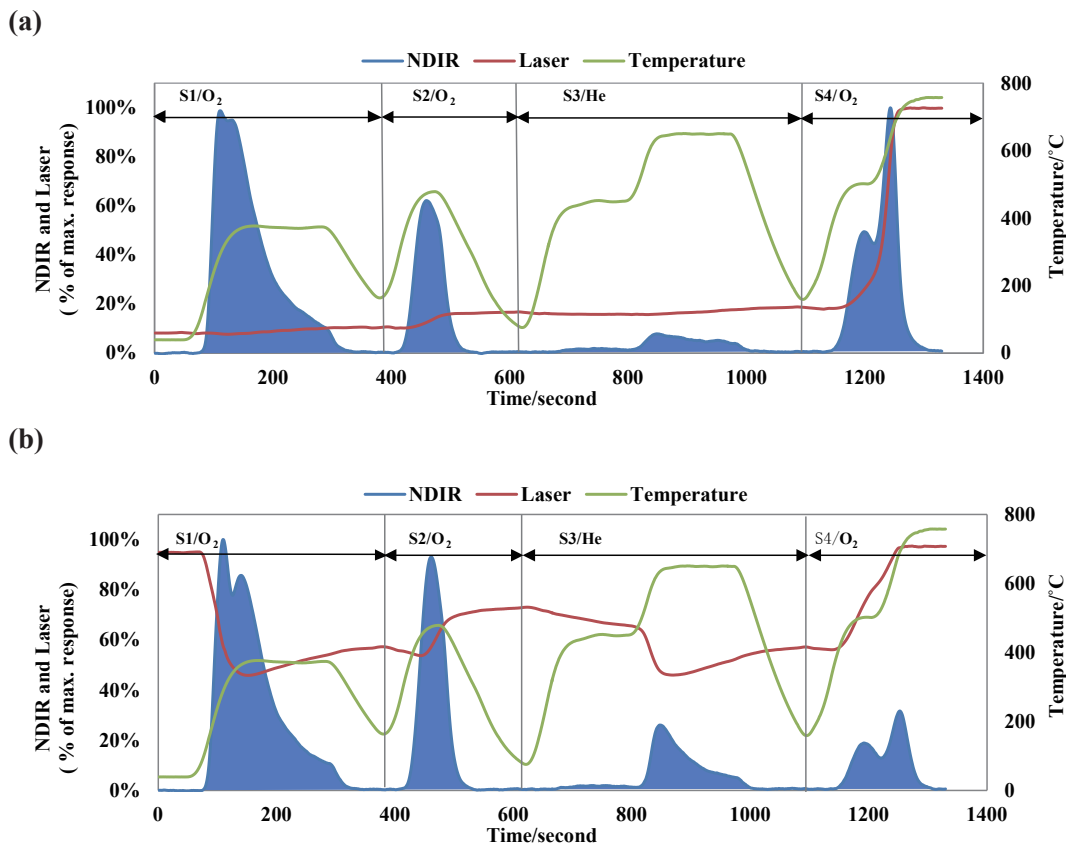


Fig. 4. Thermograms of a water-extracted aerosol sample (SOL) **(a)** and its water extract after dropped on a blank filter **(b)**, using the Swiss_4S protocol (S2: 475 °C, S3: 650 °C).

[Title Page](#)[Abstract](#)[Introduction](#)[Conclusions](#)[References](#)[Tables](#)[Figures](#)[I◀](#)[▶I](#)[◀](#)[▶](#)[Back](#)[Close](#)[Full Screen / Esc](#)[Printer-friendly Version](#)[Interactive Discussion](#)

On the isolation of
OC and EC

Y. L. Zhang et al.

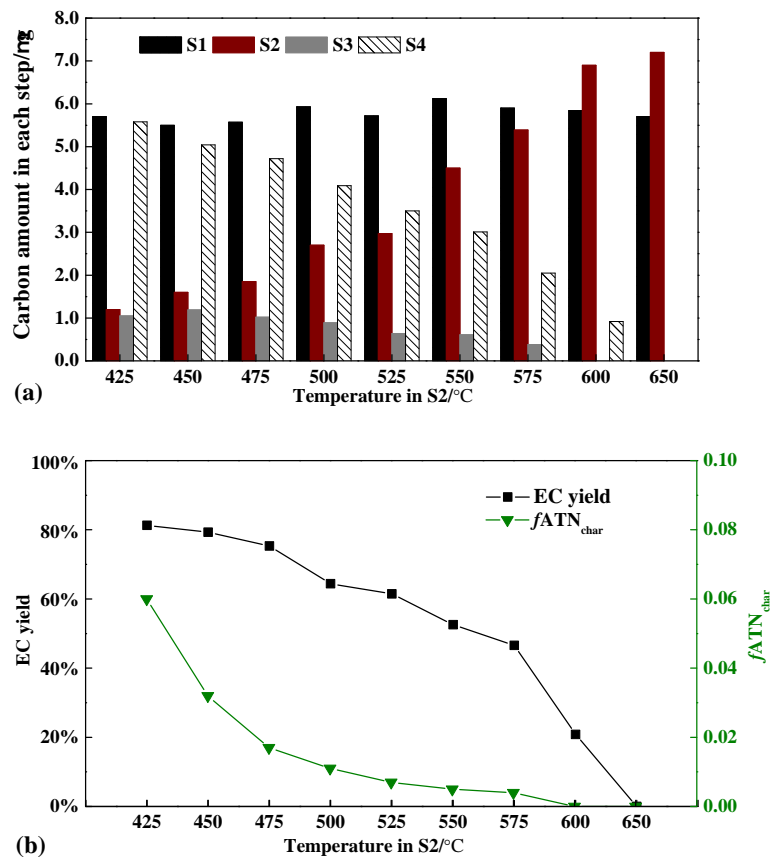


Fig. 5. Carbon amounts released in each step (a) and $f_{\text{ATN}}^{\text{char}}$ and EC yield in S4 (b), as evaluated from analysing a typical water-extracted aerosol sample (ZUR1) by the Swiss_4S protocol with different S2 temperatures.

Title Page

Abstract

Introduction

Conclusions

References

Tables

Figures

I◀

▶I

◀

▶

Back

Close

Full Screen / Esc

Printer-friendly Version

Interactive Discussion



On the isolation of
OC and EC

Y. L. Zhang et al.

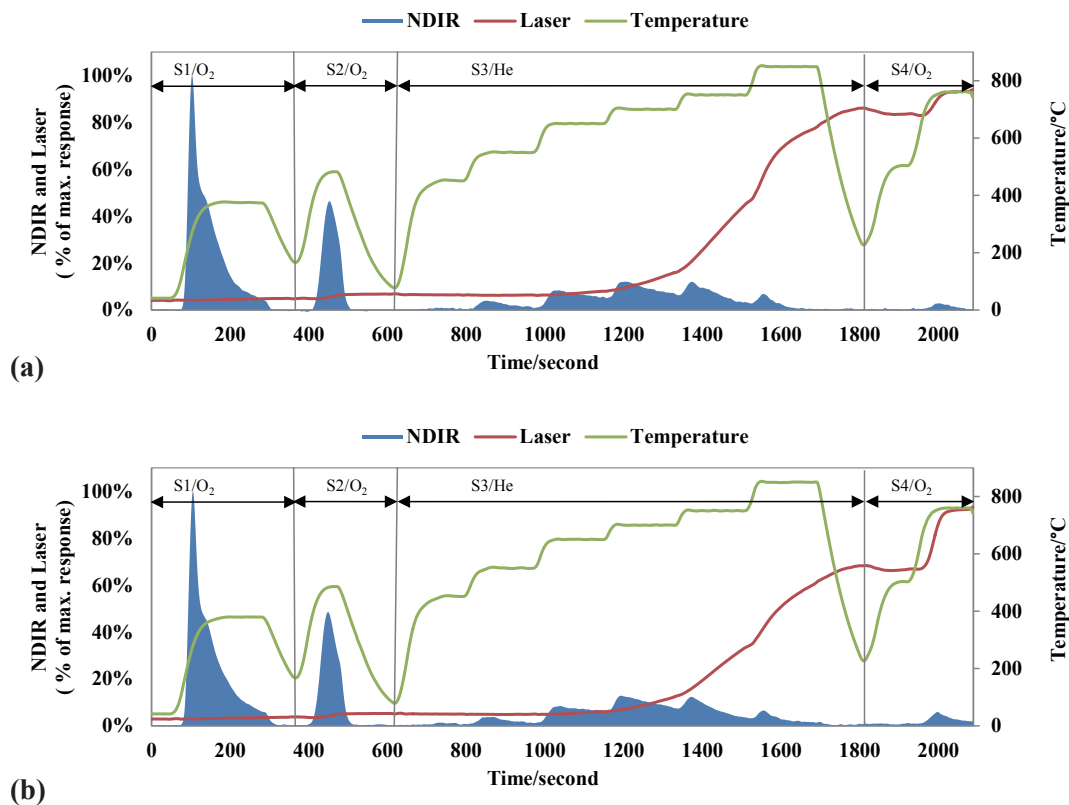


Fig. 6. Thermograms from the analysis of two water-extracted winter samples CHI (a), and MOL (b). The protocol used for analysis was modified according to the Swiss_4S protocol (see in Table 2) with a fixed peak S2 temperature of 475 °C, but with different steps in S3 (He mode): 450 °C, 550 °C, 650 °C, 700 °C, 750 °C and 850 °C, each of 180 s.

Title Page

Abstract

Introduction

Conclusions

References

Tables

Figures

◀

▶

◀

▶

Back

Close

Full Screen / Esc

Printer-friendly Version

Interactive Discussion



On the isolation of OC and EC

Y. L. Zhang et al.

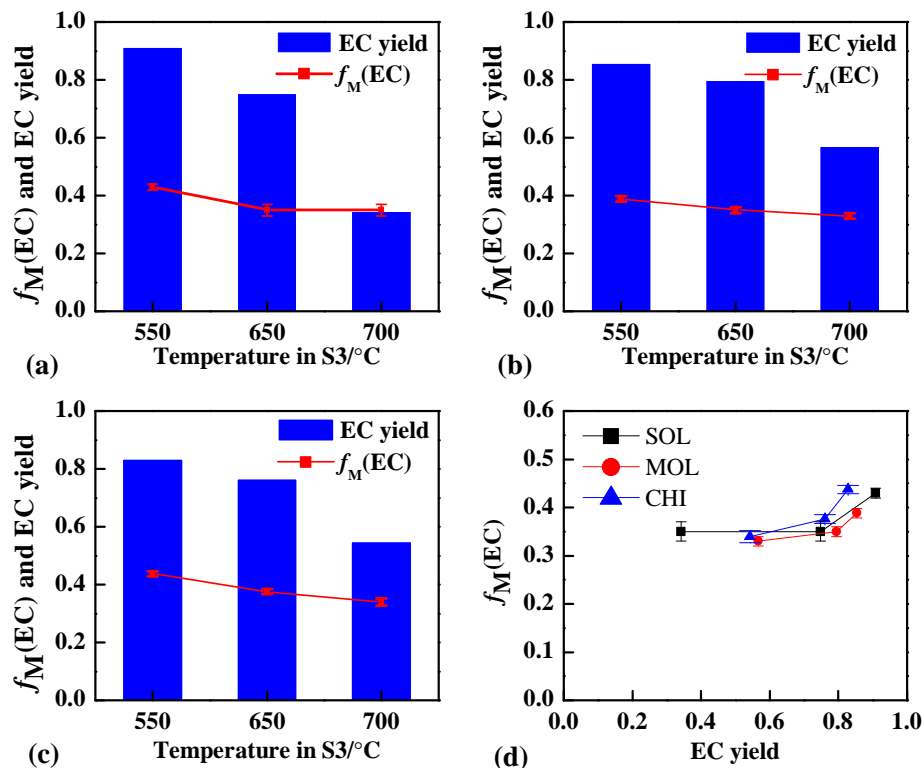


Fig. 7. Influence of S3 temperatures in the Swiss_4S protocol on EC yields and fraction of modern of recovered EC in S4 ($f_M(\text{EC})$) from the analysis of the water-extracted winter samples SOL (a), MOL (b) and CHI (c) and $f_M(\text{EC})$ as a function of different EC yields (d).

Title Page

Abstract

Introduction

Conclusions

References

Tables

Figures

◀

▶

◀

▶

Back

Close

Full Screen / Esc

Printer-friendly Version

Interactive Discussion



On the isolation of
OC and EC

Y. L. Zhang et al.

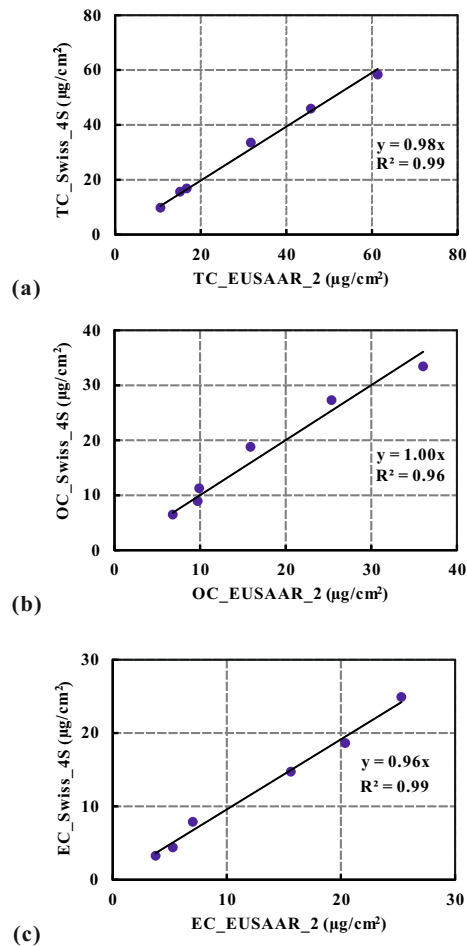


Fig. 8. Comparisons between the Swiss_4S and EUSAAR2 protocols for the analysis of TC (a), OC (b) and EC (c) for the water-extracted aerosol samples.

Title Page

Abstract

Introduction

Conclusions

References

Tables

Figures

◀

▶

◀

▶

Back

Close

Full Screen / Esc

Printer-friendly Version

Interactive Discussion



On the isolation of
OC and EC

Y. L. Zhang et al.

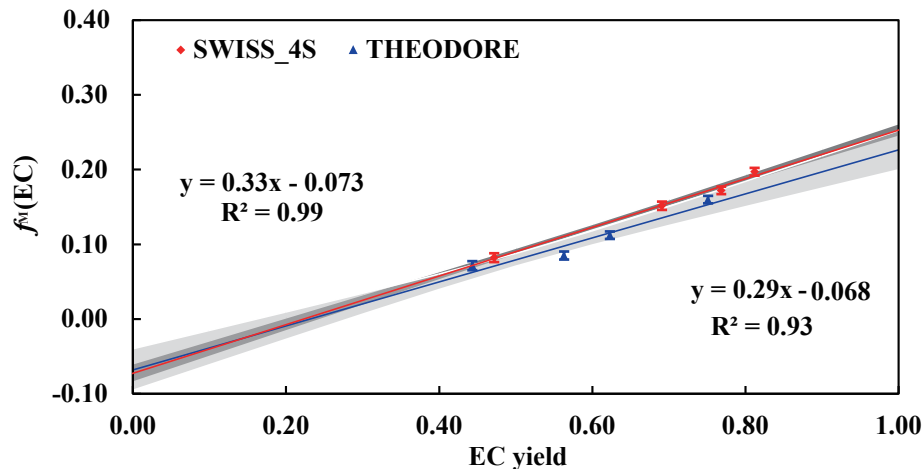


Fig. 9. $f_M(\text{EC})$ in S4 as a function of EC yield obtained by analysing the sample GOT2 with the Swiss_4S protocol and the previously used THEODORE method with different peak S2 temperatures and the oven temperatures, respectively. Shading indicates the confidential interval of the linear extrapolation within 1σ .

Title Page

Abstract

Introduction

Conclusions

References

Tables

Figures

◀

▶

◀

▶

Back

Close

Full Screen / Esc

Printer-friendly Version

Interactive Discussion



On the isolation of OC and EC

Y. L. Zhang et al.

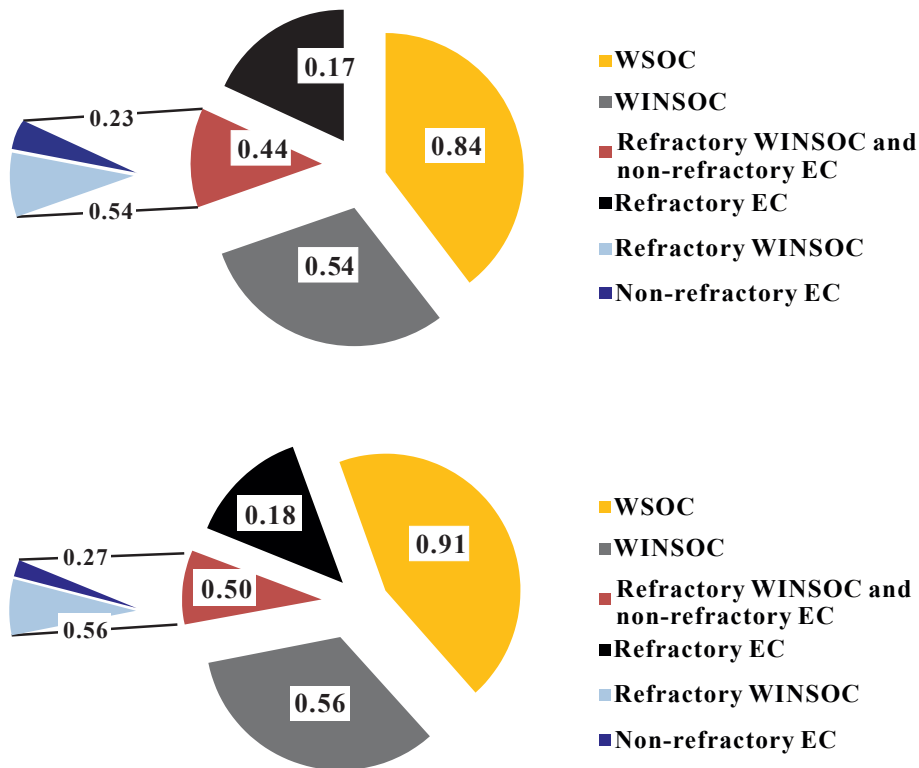


Fig. 10. Composition of different carbonaceous particle fractions (pies) and f_M values (numbers) in Göteborg for winter (GOT2) (a) and summer (GOT3) (b).

Title Page

Abstract Introduction

Conclusions References

Tables Figures

◀ ▶

◀ ▶

Back Close

Full Screen / Esc

Printer-friendly Version

Interactive Discussion

