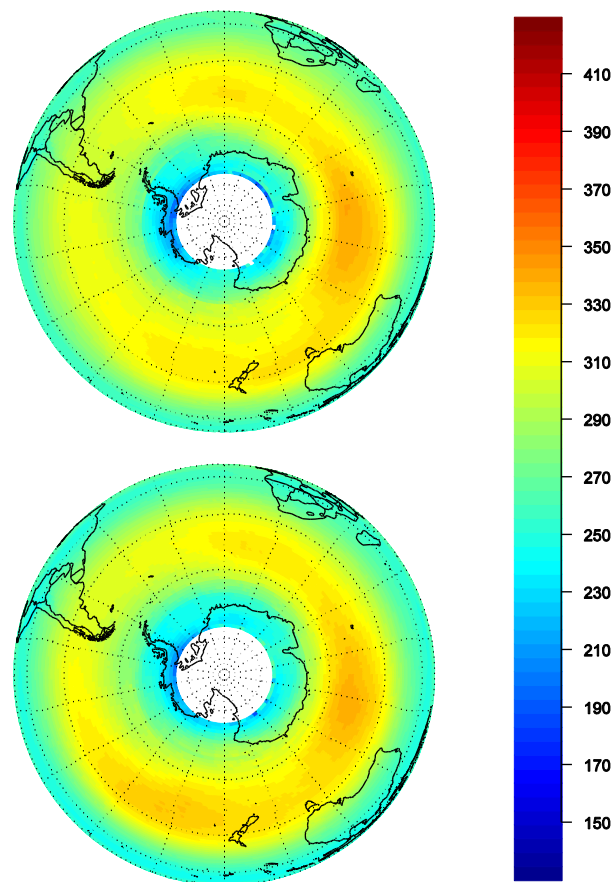


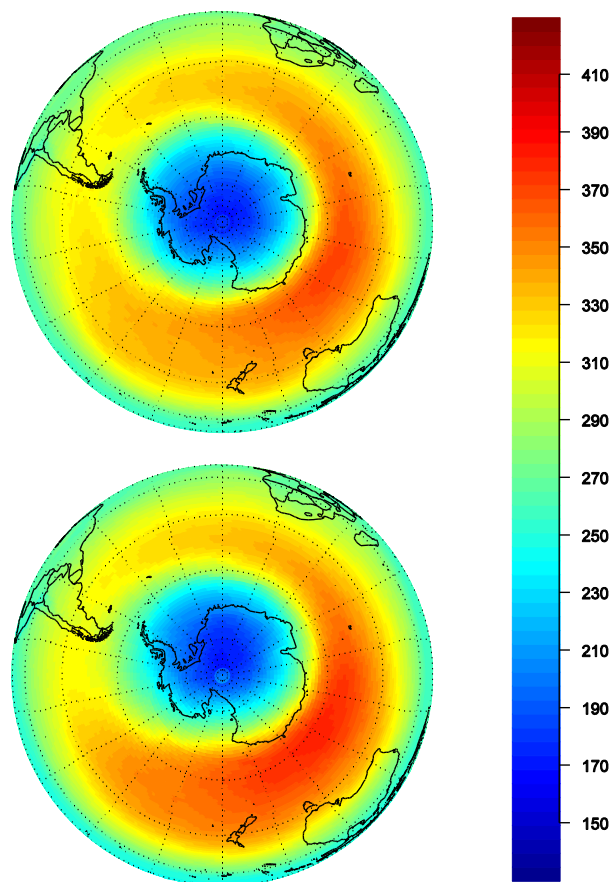
## Supplemental material to

On the relationship between total ozone and atmospheric dynamics and chemistry at mid-latitudes: Part 2 – The effects of the El Niño/Southern Oscillation, volcanic eruptions and contributions of atmospheric dynamics and chemistry to long-term total ozone changes

by H.E. Rieder et al.,  
January 30<sup>th</sup> 2012



**Fig. S1:** Southern hemisphere seasonal mean column ozone (in DU) during austral winter (JJA) for all strong La Niña years (top) and El Niño years (bottom) in 1979-2007.



**Fig. S2:** Southern hemisphere seasonal mean column ozone (in DU) during austral spring (SON) in 1989-1992. Top: 1989-90 for pre-Pinatubo eruption period. Bottom: 1991-92 for the eruption period.