

1 **Supporting Information S1**

2
3
4 Figure SI1-1 shows that small differences were observed in the daily cycles of
5 the data collected at UB station by averaging the UB data over the UB period
6 (06/05 – 07/09/2011) and over the CC period (13/05 – 28/06/2011). Slightly
7 higher NH₃ (15%) and BC (6%) concentrations and solar radiation (11%) and
8 lower wind speed (-16%), temperature (-8%) and relative humidity (-4%) with
9 very similar daily cycles were observed at UB by averaging the data over the
10 CC measurement period. Moreover, SI1 also shows that the mean values and
11 daily cycles of solar radiation, temperature and relative humidity measured at
12 both stations and integrated over the CC measurement time were similar with
13 differences of around 1% for temperature and solar radiation and 6% for RH.

1
2
3
4
5
6
7
8
9
10
11
12
13
14
15
16
17
18
19
20
21
22
23
24
25
26
27
28
29
30
31
32
33
34

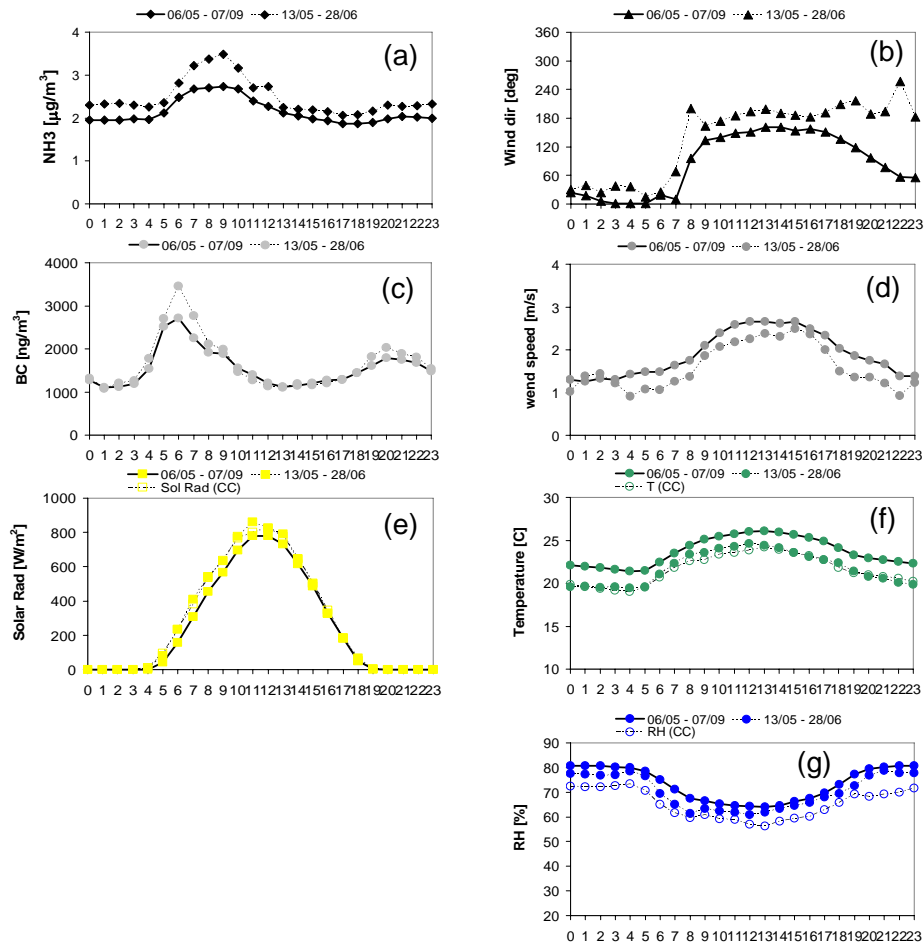


Figure S11-1: Daily cycles of aerosol components and parameters measured at UB station and averaged over the UB measurement period (06/05 – 07/09; bold lines) and over the CC measurement period (13/05 – 28/06; dashed lines).