

Interactive comment on “Error characterization of CO₂ vertical mixing in the atmospheric transport model WRF-VPRM” by R. Kretschmer et al.

R. Kretschmer et al.

rkretsch@bgc-jena.mpg.de

Received and published: 14 February 2012

The comment was uploaded in the form of a supplement:
<http://www.atmos-chem-phys-discuss.net/11/C15305/2012/acpd-11-C15305-2012-supplement.pdf>

Interactive comment on Atmos. Chem. Phys. Discuss., 11, 28169, 2011.

Full Screen / Esc

Printer-friendly Version

Interactive Discussion

Discussion Paper

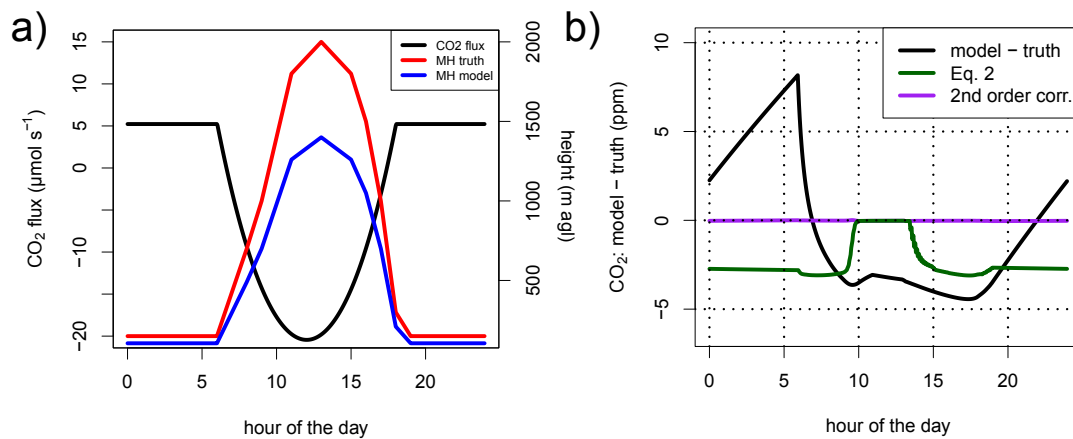
Interactive
Comment

Fig. 1. Fig.3

[Full Screen / Esc](#)[Printer-friendly Version](#)[Interactive Discussion](#)[Discussion Paper](#)

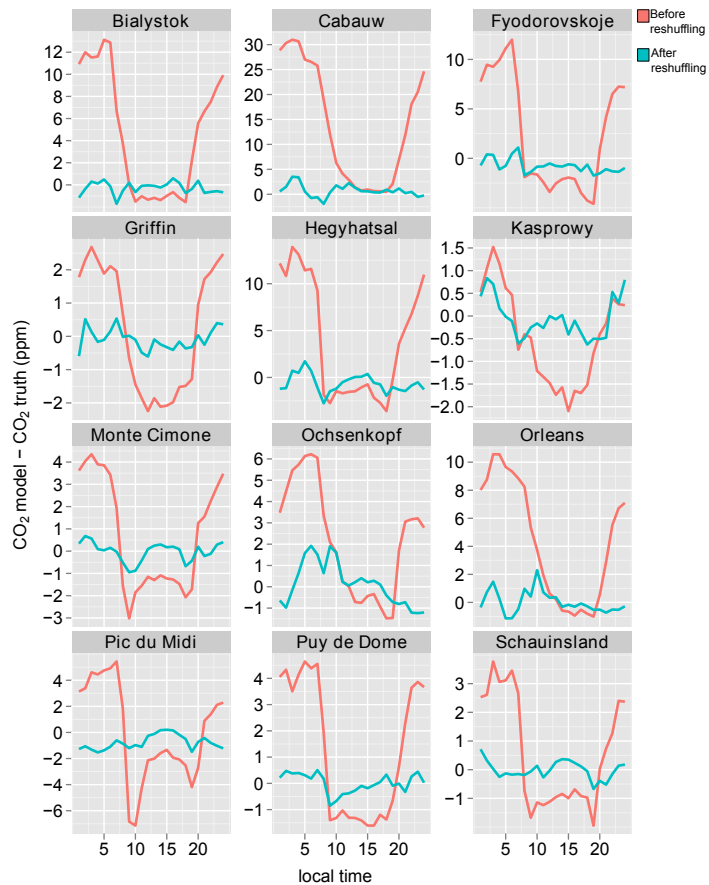
Interactive
Comment

Fig. 2. Fig.9

Full Screen / Esc

Printer-friendly Version

Interactive Discussion

Discussion Paper



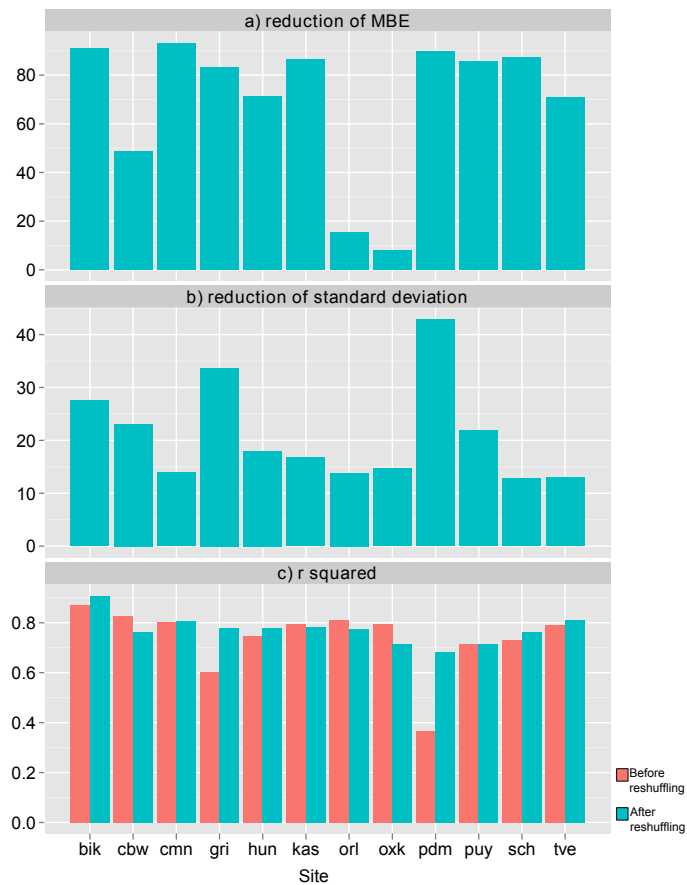


Fig. 3. Fig.10

- Full Screen / Esc
- Printer-friendly Version
- Interactive Discussion
- Discussion Paper



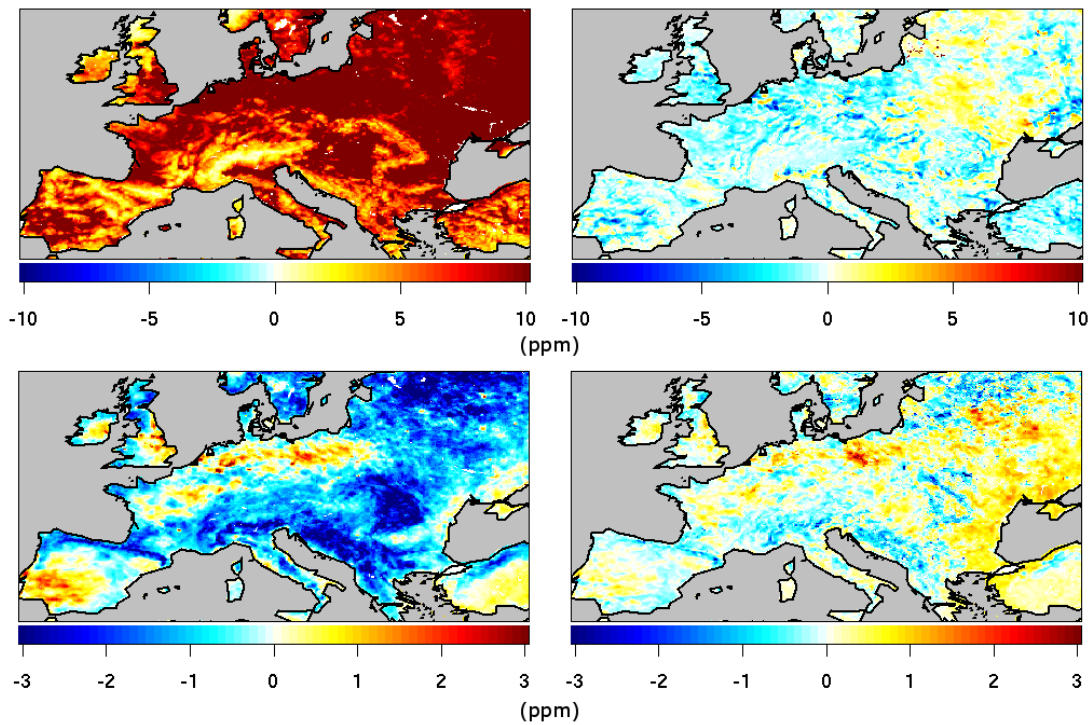


Fig. 4. Fig.11

Full Screen / Esc

Printer-friendly Version

Interactive Discussion

Discussion Paper



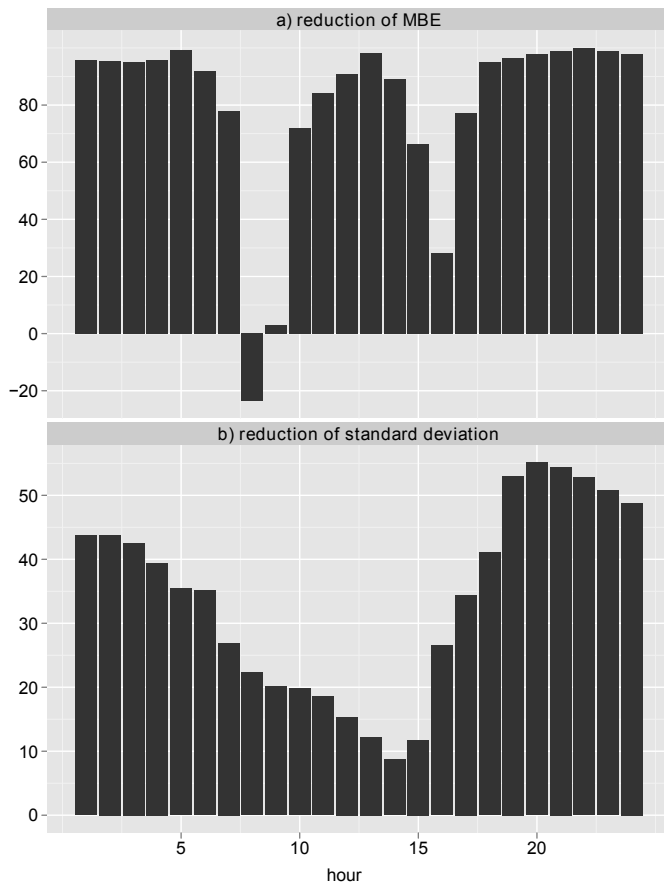


Fig. 5. Fig.12

Full Screen / Esc

Printer-friendly Version

Interactive Discussion

Discussion Paper

