

Interactive comment on “Error characterization of CO₂ vertical mixing in the atmospheric transport model WRF-VPRM” by R. Kretschmer et al.

R. Kretschmer et al.

rkretsch@bgc-jena.mpg.de

Received and published: 14 February 2012

The comment was uploaded in the form of a supplement:
<http://www.atmos-chem-phys-discuss.net/11/C15305/2012/acpd-11-C15305-2012-supplement.pdf>

Interactive comment on Atmos. Chem. Phys. Discuss., 11, 28169, 2011.

C15305

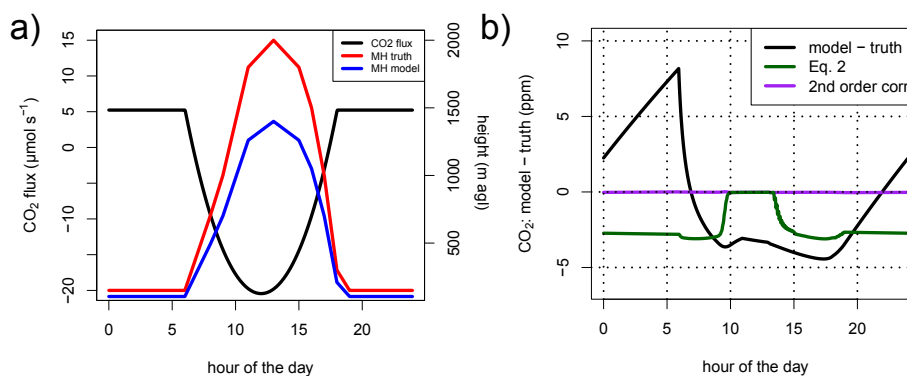


Fig. 1. Fig.3

C15306

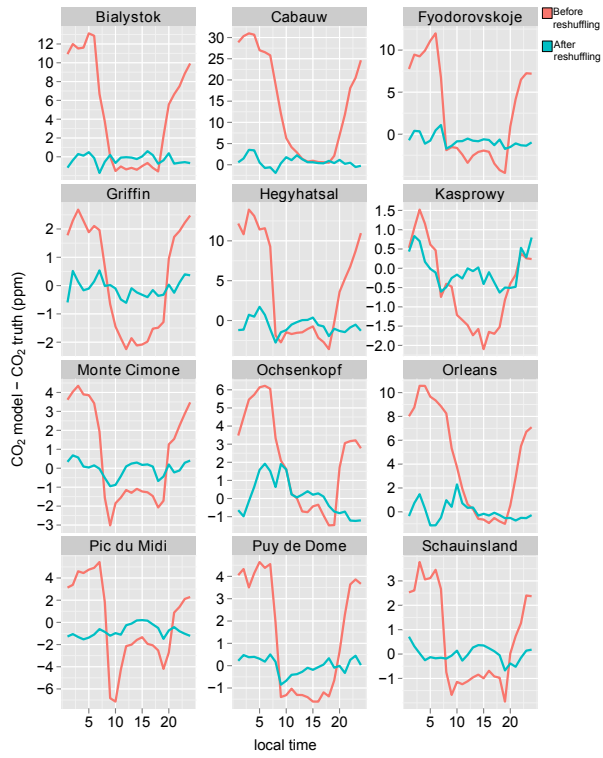


Fig. 2. Fig.9

C15307

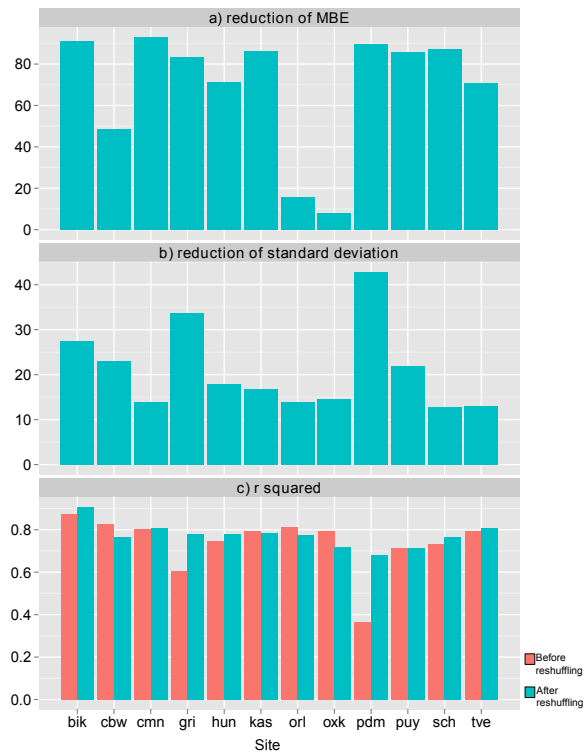


Fig. 3. Fig.10

C15308

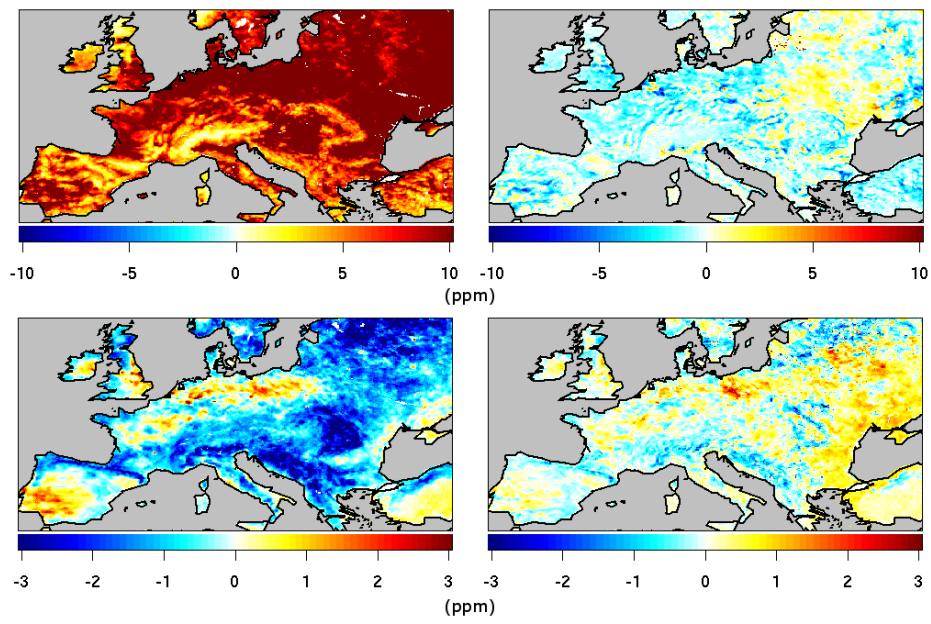


Fig. 4. Fig.11

C15309

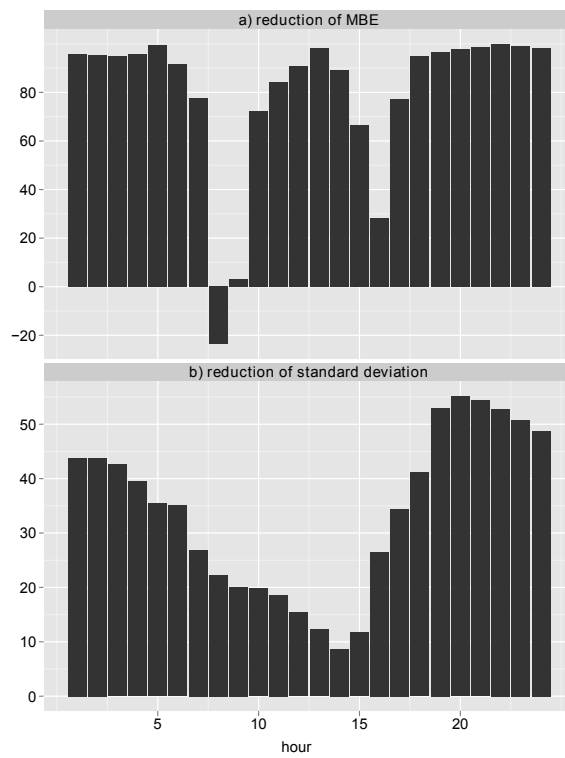


Fig. 5. Fig.12

C15310