

Interactive comment on “Novel application of satellite and in-situ measurements to map surface-level NO₂ in the Great Lakes region” by C. J. Lee et al.

C. J. Lee et al.

colinj.lee@utoronto.ca

Received and published: 28 October 2011

Thank you for pointing this out. We apologize for having missed the comment in the initial response. The ground monitors did indeed show a similar trend over the 2006-2009 period in question (see attached figure). However, this agreement would be expected as data from the in situ monitors were used in the inference process. We have not changed the manuscript in this regard as we do not feel this result added to the discussion of the inferred NO₂ concentration maps.

Interactive comment on Atmos. Chem. Phys. Discuss., 11, 17245, 2011.

Interactive
Comment

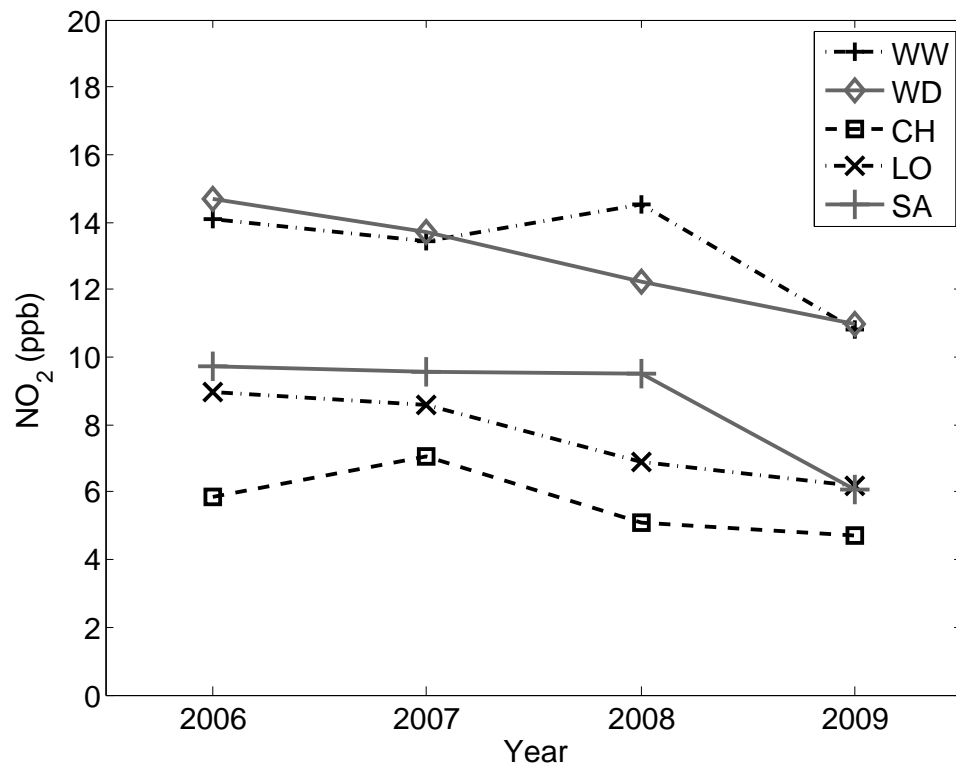


Fig. 1.

[Full Screen / Esc](#)[Printer-friendly Version](#)[Interactive Discussion](#)[Discussion Paper](#)