

**Cloud droplet
concentration over
the boreal forest**

R. H. H. Janssen et al.

This discussion paper is/has been under review for the journal Atmospheric Chemistry and Physics (ACP). Please refer to the corresponding final paper in ACP if available.

Estimating seasonal variations in cloud droplet number concentration over the boreal forest from satellite observations

R. H. H. Janssen¹, L. N. Ganzeveld¹, P. Kabat¹, M. Kulmala², T. Nieminen², and R. A. Roebeling³

¹Earth System Science and Climate Change, Wageningen University and Research Centre, Wageningen, The Netherlands

²Department of Physics, P. O. Box 64, 00014 University of Helsinki, Finland

³Royal Netherlands Meteorological Institute, De Bilt, The Netherlands

Received: 25 February 2011 – Accepted: 17 March 2011 – Published: 25 March 2011

Correspondence to: R. H. H. Janssen (ruud.janssen@wur.nl)

Published by Copernicus Publications on behalf of the European Geosciences Union.

Title Page

Abstract

Introduction

Conclusions

References

Tables

Figures

⏪

⏩

◀

▶

Back

Close

Full Screen / Esc

Printer-friendly Version

Interactive Discussion



Abstract

Seasonal variations in cloud droplet number concentration (N_{CD}) in low-level stratiform clouds over the boreal forest are estimated from MODIS observations of cloud optical and microphysical properties, using a sub-adiabatic cloud model to interpret vertical profiles of cloud properties. An uncertainty analysis of the cloud model is included to reveal the main sensitivities of the cloud model. We compared the seasonal cycle in N_{CD} obtained using 9 years of satellite data, to surface concentrations of potential cloud activating aerosols, measured at the SMEAR II station at Hyytiälä in Finland. The results show that N_{CD} and cloud condensation nuclei (CCN) concentrations have no clear correlation at seasonal time scale. The fraction of aerosols that actually activate as cloud droplet decreases sharply with increasing aerosol concentrations. Furthermore, information on the stability of the atmosphere shows that low N_{CD} is linked to stable atmospheric conditions. Combining these findings leads to the conclusion that cloud droplet activation for the studied clouds over the boreal forest is limited by convection. Our results suggest that it is important to take the strength of convection into account when studying the influence of aerosols from the boreal forest on cloud formation, although they do not rule out the possibility that aerosols from the boreal forest affect other types of clouds with a closer coupling to the surface.

1 Introduction

The biosphere makes a very large contribution to the levels of atmospheric aerosols and cloud condensation nuclei (Andreae and Rosenfeld, 2008). However, the feedbacks that are possibly associated with the emissions of natural aerosols have only recently started to receive substantial attention and therefore the scientific understanding of their drivers, climate impacts and interactions is low (Carslaw et al., 2010). One proposed feedback mechanism which involves aerosols of natural origin concerns the boreal forests of the Northern high latitudes. Kulmala et al. (2004) proposed that aerosols

Cloud droplet concentration over the boreal forest

R. H. H. Janssen et al.

Title Page

Abstract

Introduction

Conclusions

References

Tables

Figures

◀

▶

◀

▶

Back

Close

Full Screen / Esc

Printer-friendly Version

Interactive Discussion



Cloud droplet concentration over the boreal forest

R. H. H. Janssen et al.

Title Page

Abstract

Introduction

Conclusions

References

Tables

Figures

◀

▶

◀

▶

Back

Close

Full Screen / Esc

Printer-friendly Version

Interactive Discussion



produced by forests modify the radiation balance via their influence on cloud properties such as albedo, thereby posing a negative feedback on the surface temperature and on the productivity of the forest itself. They based their hypothesis on the observation that in the boreal forest, there is a strong coupling between the seasonal cycle in temperature, vegetation productivity, biogenic emissions of Volatile Organic Compounds (VOC) and the growth rate of freshly formed aerosol particles. Ongoing research has further confirmed the role of boreal forests as a contributor to both aerosol number by facilitating new particle formation from gaseous precursors (Kavouras et al., 1998; O'Dowd et al., 2002, 2009; Laaksonen et al., 2008) and their subsequent growth by providing condensable species in the form of VOC oxidation products (Allan et al., 2006; Tunved et al., 2006, 2008; Dal Maso et al., 2008).

Some studies have been undertaken to estimate the effect that the vegetation-aerosol-cloud feedback may have on the surface radiation balance in the boreal forest. Spracklen et al. (2008) estimated the radiative forcing of the 1st indirect aerosol effect from biogenic aerosols over the boreal forest to be between -1.8 and -6.7 W m^{-2} using a chemical transport model that includes parameterizations of nucleation and condensational growth coupled to a simple radiation model. Another study that used a more conceptual approach to estimate the radiative forcing of particle formation over the boreal forest yielded numbers up to -14 W m^{-2} (Kurtén et al., 2003). This would imply that the aerosol effect may be able to compensate for a hypothesized present-day net warming of the boreal forests through the combined effect of a decrease in surface albedo and enhanced CO_2 -uptake (Betts, 2000; Bala et al., 2007).

New particle formation events are important contributors to the aerosol particle number over the boreal forest (Kulmala et al., 2001; Dal Maso et al., 2007). The occurrence of particle formation events has a typical annual variation over the Scandinavian boreal forest, with peaks in springtime and autumn and minima in winter and summer (Dal Maso et al., 2007). It has been shown that the aerosols that are produced during these nucleation events grow rapidly to sizes at which they can serve as cloud condensation nuclei (CCN) (Lihavainen et al., 2003) and consequently are able to participate in

cloud droplet formation (Kerminen et al., 2005). The growth rates of these newly formed particles are strongly correlated to concentrations of monoterpene oxidation products (Laaksonen et al., 2008; Allan et al., 2006). Monoterpenes are emitted in large quantities by boreal forests, following a strong seasonal pattern, determined by a pronounced seasonal cycle in temperature, light intensity and vegetation productivity (Hakola et al., 2003; Lappalainen et al., 2009). Once oxidized, these organics condense onto freshly nucleated clusters to grow them to sizes larger than 3 nm, which allows them to survive as individual aerosols (O'Dowd et al., 2002; Cavalli et al., 2006), and contribute to their further growth to a diameter of 50 to 100 nm, which allows them to act as CCN (Tunved et al., 2008). The findings of these studies were confirmed by Sihto et al. (2010) who derived, from information on the hygroscopicity of the aerosol at Hyytiälä, that aerosols that have grown to the size of CCN consist for a large part (~80%) of organic material.

The number of aerosols that eventually activate into cloud droplets depends on the aerosol concentration, size distribution and chemical properties and on the updraft velocity, which determines the maximum supersaturation in a cloud parcel (McFiggans et al., 2006; Reutter et al., 2009). Once activated into cloud droplets, aerosols affect the cloud optical and microphysical properties through various Aerosol Indirect Effects (AIE). Twomey (1977) suggested that adding aerosols increases the droplet concentration and decrease the droplet size of clouds with a given liquid water path (LWP), which in turn leads to an increase of the cloud albedo (1st indirect effect). Albrecht (1989) proposed that the changes in cloud microphysics lead to a less efficient formation of precipitation and an increase in cloud lifetime (2nd indirect effect), while Lohmann and Feichter (2005) discussed several semi-direct effects such as cloud warming due to increased absorption of solar radiation by black carbon aerosols.

Satellite remote sensing is a widely used tool for determining the AIE. Retrievals of cloud optical thickness and effective radius are required to determine the sensitivity of cloud radiative properties to changes in aerosol concentration (Nakajima et al., 2001; Platnick and Twomey, 1994). Using either of these variables as indicator of the AIE requires the assumption of a constant LWP, which is generally not the case. A

Cloud droplet concentration over the boreal forest

R. H. H. Janssen et al.

Title Page

Abstract

Introduction

Conclusions

References

Tables

Figures



Back

Close

Full Screen / Esc

Printer-friendly Version

Interactive Discussion



way to circumvent this problem is to estimate the cloud droplet number concentration (N_{CD}), since it directly links cloud optical and microphysical properties to the aerosol concentration at cloud base. Several methods have been developed for this purpose, each one requiring different assumptions about the sub-adiabatic character of and the mixing that occurs inside clouds (Bennartz, 2007; Boers et al., 2006; Szczodrak et al., 2001).

The method developed by Boers et al. (2006) (hereinafter referred to as B06), was validated by Roebeling et al. (2008), combining ground-based observations of cloud depth (h) and LWP with calculations of the cloud model using data from the SEVIRI-instrument onboard METEOSAT as input. This showed very good agreement for strictly selected cases over the Netherlands.

Until now, however, there is little observational evidence for the influence of aerosols, which are formed in the boreal forest, on cloud optical and microphysical properties. Most of these measurements are performed at a clean background site in northern Finland, Pallas (Komppula et al., 2005; Kerminen et al., 2005; Lihavainen et al., 2008), which is at the northern border of the boreal forest. Recently, Lihavainen et al. (2010) estimated aerosol-cloud interactions over Pallas, using a combination of ground-based and MODIS data of cloud and aerosol properties. Their focus was how quantification of the aerosol burden affects the measured strength of aerosol-cloud interactions comparing ground-based and satellite measurements.

In our study we combine satellite observations of cloud properties over the SMEAR II measurement station at Hyytiälä in Finland with ground-based observations of aerosol concentrations and meteorological fields from ECMWF-reanalysis (1) to assess the seasonal variability in N_{CD} of low level liquid water clouds over the boreal forest and (2) to determine the role of surface aerosol concentration and meteorology in explaining this variability.

In Sect. 2 we first present the applied methodology including a description of the selection of the satellite and surface data an introduction of the cloud model and a detailed uncertainty analysis. Section 3 shows the results of our analysis, including the

Cloud droplet concentration over the boreal forest

R. H. H. Janssen et al.

Title Page

Abstract

Introduction

Conclusions

References

Tables

Figures

◀

▶

◀

▶

Back

Close

Full Screen / Esc

Printer-friendly Version

Interactive Discussion



observed cloud properties and their relation to aerosol concentrations and meteorology. The paper is concluded by a discussion and conclusions Sect. (4).

2 Data and methods

We present an analysis of cloud properties as observed by the MODIS-instrument onboard the Terra satellite in combination with ground based measurements of aerosol concentration and meteorological fields obtained from the ECMWF-server. As it is not possible to derive N_{CD} directly from the reflection spectra of solar radiation by clouds, we apply a model which generalizes the properties of stratiform liquid water clouds to estimate N_{CD} . The advantage of using satellite based measurements is that it allows to monitor the seasonal cycle in cloud optical and microphysical properties over several years, and thus get a statistically robust signal. We calculated median values of both the satellite, aerosol and meteorological data over periods of about one week.

2.1 Satellite data selection

We used 9 years (2000–2008) of MODIS-Terra Level2 (collection 005)-data (Platnick et al., 2003), which comprise pixel level retrievals (1 km resolution) of cloud optical and microphysical properties. We averaged cloud properties over a $2 \times 2^\circ$ latitude-longitude box centered over the SMEAR II measurement station, Hyytiälä, Finland.

Since the cloud model is only valid for single-layered water clouds we selected clouds according to their cloud optical thickness τ ($3.7 < \tau < 20$) and cloud top pressure p_{ct} ($p_{ct} > 780$ hPa, corresponding to a cloud top height lower than about 2.5 km) based on the ISCCP (International Satellite Cloud Climatology Project) definition of stratocumulus. We realize that these criteria represent only an approximate climatological relationship between satellite derived cloud properties and the classical morphological cloud types and therefore do not rule out the inclusion of other types of clouds. Therefore, we tested the sensitivity of our results for the τ -criterion by including also clouds that

Cloud droplet concentration over the boreal forest

R. H. H. Janssen et al.

Title Page

Abstract

Introduction

Conclusions

References

Tables

Figures

◀

▶

◀

▶

Back

Close

Full Screen / Esc

Printer-friendly Version

Interactive Discussion



are optically thicker. We constrained the retrievals to days for which the solar zenith angle did not exceed 60° , which roughly limited our retrievals to the months of April to September, coinciding with the boreal forest growing season. Furthermore, we selected only data with a satellite sensor zenith angle smaller than 60° , to avoid the data to be affected by 3-D-radiative effects in the cloud (Várnai and Marshak, 2007). Finally, we only included pixels for which MODIS cloud phase qualified as 'opaque water clouds' to exclude the possible influence of ice clouds on the retrieval.

2.2 Ground-based measurements

The observations are performed over the SMEAR II field station at Hyytiälä ($61^\circ 51' N$, $24^\circ 17' E$) in southern Finland, where ecosystem, meteorological and aerosol properties are measured since 1996 (Hari and Kulmala, 2005). The site is during the growing season (April-September) most of the time showing a footprint of marine air masses, except for the months of April when continental air dominates and July when marine and continental air masses have equal shares (Sogacheva et al., 2008). Levels of anthropogenic pollution are low, especially during periods when air masses arrive from the sparsely populated northern sector. For a more detailed site description, see e.g. Kulmala et al. (2001).

Aerosol size distribution data are obtained from differential mobility particle sizer (DMPS) (Aalto et al., 2001) that measured aerosols in the range from 3 and 500 nm until December 2004 and aerosols between 3 to 1000 nm in diameter after that date. The number concentrations of aerosols above a certain activation diameter was obtained by summing the aerosols from that diameter up to the upper limit of the measured size distribution, thus assuming a fixed chemical composition of the aerosol over the size distribution.

Cloud condensation nuclei at various supersaturations have been measured with a CCN counter from July 2008 to June 2009. A more detailed description of these measurements is given by Sihto et al. (2010).

Cloud droplet concentration over the boreal forest

R. H. H. Janssen et al.

Title Page

Abstract

Introduction

Conclusions

References

Tables

Figures

◀

▶

◀

▶

Back

Close

Full Screen / Esc

Printer-friendly Version

Interactive Discussion



2.3 Cloud model

We used the cloud model of B06 to calculate N_{CD} and h from satellite observations of cloud droplet effective radius (r_{eff}) and cloud optical thickness (τ).

The model represents the microphysics and thermodynamics of a single-layered water cloud based on functions of the following form:

$$N_{\text{CD}} = A_1 \tau^{1/2} r_{\text{eff}}^{-5/2} \quad (1)$$

and

$$h = A_2 \tau^{1/2} r_{\text{eff}}^{1/2}, \quad (2)$$

where:

N_{CD} : cloud droplet number concentration (cm^{-3})

h : cloud physical thickness (m)

r_{eff} : effective radius of cloud droplets (μm)

τ : cloud optical thickness (-)

A_1 , A_2 : factors that contain the model's uncertainties with respect to cloud thermodynamics and microphysics.

The factors A_1 and A_2 are not constant, but depend on assumptions about the following four cloud thermodynamic and microphysical factors: (1) the subadiabatic behavior of the cloud, represented by the subadiabatic fraction Fr of the liquid water path, (2) the shape of the liquid water profile (linear or C-shaped), (3) the ratio between the volume radius and effective radius of the cloud droplets k_1 and 4) if the variation in the vertical profile of the liquid water content (LWC) is associated with variation in the droplet concentration or droplet volume radius or both.

The reason that the model is only valid for stratiform clouds is that these clouds are relatively homogeneous, so that the vertical profiles of LWC, N_{CD} and other physical cloud properties can be generalized rather easily. The model thus infers low-level,

Cloud droplet concentration over the boreal forest

R. H. H. Janssen et al.

Title Page

Abstract

Introduction

Conclusions

References

Tables

Figures

◀

▶

◀

▶

Back

Close

Full Screen / Esc

Printer-friendly Version

Interactive Discussion



stratiform clouds in or just above the boreal forest boundary layer, the clouds most likely to be affected by the aerosols from the forest.

For the derivation of the model we refer to the papers of B06 and Boers and Rotstajn (2001). Here we limit ourselves to an introduction of the governing equations of the cloud model and focus in particular on the associated uncertainties. The equations to calculate N_{CD} and h from the input of satellite-based cloud optical properties respectively with the factors $A1$ and $A2$ fully written out are:

$$N_{CD} = 2^{-2/3} 3^{1/2} \pi^{-1} \left(\frac{\rho_a}{\rho_w} \right)^{1/2} A_{ad}^{1/2} k_1^{-3} F_i^{-1/2}(Fr, \alpha) G_i^{5/2}(Fr, \alpha) \tau^{1/2} r_{eff}^{-5/2} \quad (3)$$

, and

$$h = \left[\frac{2}{3} \left(\frac{\rho_w}{\rho_a} \right) A_{ad}^{-1} F_i^{-1}(Fr, \alpha) G_i^{-1}(Fr, \alpha) \cdot \tau \cdot r_{eff} \right]^{1/2} \quad (4)$$

where:

ρ_a : density of air (kg m^{-3})

ρ_w : density of water (kg m^{-3})

A_{ad} : adiabatic lapse rate of liquid water mixing ratio ($\text{g g}^{-1} \text{m}^{-1}$)

k_1 : ratio between the second moment of the droplet size (volume radius r_v) distribution and its 3rd moment (effective radius r_{eff}) (-)

α : factor that determines shape of liquid water vertical profile (-)

Fr : subadiabatic fraction (-)

F_i and G_i are functions related to the mixing model that is used.

It is obvious from these relationships that N_{CD} and h depend on a large number of parameters which are often poorly constrained. Therefore, a thorough uncertainty analysis is required.

Cloud droplet concentration over the boreal forest

R. H. H. Janssen et al.

Title Page

Abstract

Introduction

Conclusions

References

Tables

Figures

◀

▶

◀

▶

Back

Close

Full Screen / Esc

Printer-friendly Version

Interactive Discussion



Discussion Paper | Discussion Paper | Discussion Paper | Discussion Paper

2.4 Uncertainty analysis

Calculation of N_{CD} and h is subject to uncertainties in the retrievals of r_{eff} and τ by MODIS and uncertainties that arise from using the cloud model. In this section we discuss possible error sources in both retrieval and the cloud model, whether they are random or systematic and how they propagate through the analysis. We are aware of the fact that the uncertainty estimates are themselves often uncertain, but the following analysis will give some insight in the contributions of the individual input parameters to the total uncertainty estimate.

Since the relation between the input variables and output variables of Eqs. (3) and (4) follows a power law (i.e. $X = Y^\beta$), the sensitivity of any output variable to any input parameter or variable can be written as:

$$\frac{\partial X}{\partial Y} = \beta \frac{X}{Y} \quad (5)$$

where: β : exponent of the power law relation between X and Y .

If we assume that the errors are normally distributed we can use Gaussian error propagation and write the relative errors of N_{CD} and h , respectively, as follows:

$$\left[\frac{\partial N_{CD}}{N_{CD}} \right]^2 = \left[3 \frac{\partial k_1}{k_1} \right]^2 + \left[\frac{1}{Z_1} \frac{\partial Z_1}{\partial Fr} \right]^2 + \left[\frac{1}{2} \frac{\partial A_{ad}}{A_{ad}} \right]^2 + \left[\frac{5}{2} \frac{\partial r_{eff}}{r_{eff}} \right]^2 + \left[\frac{1}{2} \frac{\partial \tau}{\tau} \right]^2 \quad (6)$$

$$\left[\frac{\partial h}{h} \right]^2 = \left[\frac{1}{Z_2} \frac{\partial Z_2}{\partial Fr} \right]^2 + \left[\frac{1}{2} \frac{\partial A_{ad}}{A_{ad}} \right]^2 + \left[\frac{1}{2} \frac{\partial r_{eff}}{r_{eff}} \right]^2 + \left[\frac{1}{2} \frac{\partial \tau}{\tau} \right]^2 \quad (7)$$

where:

$$Z_1(Fr) = F^{-\frac{1}{2}}(Fr, \alpha) G^{\frac{5}{2}}(Fr, \alpha) \quad (8)$$

$$Z_2(Fr) = F^{-\frac{1}{2}}(Fr, \alpha) G^{-\frac{1}{2}}(Fr, \alpha) \quad (9)$$

In the assessment of the uncertainties in the input parameters and other model parameters we have made a distinction between the random and the systematic part of those errors.

Title Page

Abstract

Introduction

Conclusions

References

Tables

Figures

◀

▶

◀

▶

Back

Close

Full Screen / Esc

Printer-friendly Version

Interactive Discussion



Uncertainty in effective radius (r_{eff}) and cloud optical thickness (τ)

The retrievals of MODIS Level 2 (the already processed raw spectral data) cloud optical and microphysical properties are described by Platnick et al. (2003). We used data from Collection 005, which are the first MODIS Cloud Optical Properties retrievals to include pixel-level uncertainty estimates (King et al., 2006). The mean error for both r_{eff} and τ is about 13%. Based on these references, we estimate a random component of 25%, which, after spatially averaging the pixel values in the latitude-longitude box and temporally averaging these in bins, results in an error of 10%. This error estimate acknowledges the systematic error in MODIS, but the temporal and spatial averaging levels out the random part of the error.

Uncertainty in ratio between volume and effective radius (k_1)

The parameter k_1 relates the volume radius to the r_{eff} of a droplet size distribution and therefore contains information on the skewness and dispersion of the droplet size distribution. For the typical values of N_{CD} that we find in our study ($<100 \text{ cm}^{-3}$), the range of possible values of k_1 is relatively small. Following B06, we take $k_1 = 0.87 \pm 0.03$, so that $dk_1/k_1 = 0.03/0.87 = 3\%$.

Uncertainty in subadiabatic fraction (Fr)

The cloud model considers the fact that mixing in of air into the cloud is a non-adiabatic process by means of applying a subadiabatic fraction Fr to the cloud liquid water profile. For single-layered water clouds Fr will roughly vary between 0.3 and 0.9, depending on the intensity of turbulent entrainment and vertical mixing of the clouds and surrounding air. A smaller Fr , for fixed values of the other parameters, means that the liquid water is distributed over a larger vertical portion of the cloud, causing larger values of h and smaller values of N_{CD} . Since we have no further information on the actual Fr , we

Cloud droplet concentration over the boreal forest

R. H. H. Janssen et al.

Title Page

Abstract

Introduction

Conclusions

References

Tables

Figures

◀

▶

◀

▶

Back

Close

Full Screen / Esc

Printer-friendly Version

Interactive Discussion



applied a value of 0.6 for Fr , comparable to the values used in previous studies (B06, Roebeling et al., 2008). For the uncertainty in Fr , we follow B06 and set Fr to 0.6 ± 0.3 . We numerically evaluated the cloud model for these variations in Fr , which yielded an error of 26% for typical values of r_{eff} , τ and A_{ad} found in our study.

5 Uncertainty in adiabatic lapse rate of liquid water content mixing ratio (A_{ad})

The adiabatic lapse rate of liquid water mixing ratio A_{ad} ($\text{g g}^{-1} \text{m}^{-1}$) depends on temperature and pressure (Betts and Harshvardhan, 1987). Since it is equal to the amount of water that condenses when a parcel of air rises along the moist adiabat, it is coupled to the moist adiabatic lapse rate Γ_{m} . To obtain the range in A_{ad} during the season, we need information on the cloud base temperature and pressure. For Hyytiälä, the seasonal surface temperature range defined as the mean temperature in the warmest minus the mean temperature in the coldest month in the period of our retrievals is about 13°C (e.g. Kulmala et al., 2004). By assuming a mean cloud base at 1000 m and a well mixed boundary layer, the cloud base temperature (T_{cb}) can be estimated using:

$$15 \quad T_{\text{cb}} = T_{\text{s}} - h_{\text{cb}} \Gamma_{\text{d}} \quad (10)$$

where:

T_{s} : surface temperature (K)

h_{cb} cloud base height (m)

Γ_{d} : dry adiabatic lapse rate (K m^{-1})

20 Under these assumptions, we arrive at an estimated minimum and maximum cloud base temperature over Hyytiälä of -7°C and 6°C , respectively. For an estimated mean cloud base pressure of 900 hPa, the corresponding minimum and maximum values of A_{ad} is 1.09×10^{-8} and 1.78×10^{-8} , respectively. This yields a mean A_{ad} of $1.44 \times 10^{-8} \pm$
25 0.35×10^{-8} implying an error of 24%.

Cloud droplet concentration over the boreal forest

R. H. H. Janssen et al.

Title Page

Abstract

Introduction

Conclusions

References

Tables

Figures

◀

▶

◀

▶

Back

Close

Full Screen / Esc

Printer-friendly Version

Interactive Discussion



Variations in A_{ad} are likely to be systematic on seasonal time scales, because of its coupling to temperature. Since a higher (lower) A_{ad} leads to a higher (lower) N_{CD} , this will lead to an overestimation of the N_{CD} in spring and autumn and an underestimation in summer.

5 Finally there are two parameters that control the vertical profiles of cloud optical properties in the cloud model, but which do not contribute significantly to the uncertainty in the calculations of N_{CD} and h , but which are discussed here for completeness.

The parameter α determines the curvature of the liquid water profile in the cloud model. Following B06, the value is fixed at 0.3. They found that vertically averaged values of N_{CD} and h are insensitive to the choice of α .

10 Mixing with dry air from outside the cloud causes the liquid water path to deviate from the adiabatic water path. There are basically two contrasting possible assumptions on the effects of non-adiabaticity on the vertical profile of the liquid water path (1) either the departure from the adiabatic liquid water path is caused by a change in droplet volume, while cloud droplet number N_{CD} is constant, or (2) the N_{CD} is changed, while the droplet volume remains constant. The former is referred to as homogeneous mixing, since the mixing evaporates water from all cloud droplets at an equal rate. The second situation is referred to as inhomogeneous mixing, because the cloud droplets are evaporated due to dilution of the cloud parcel with environmental air, while the volume of the remaining droplets is conserved. Interestingly, both assumptions result in about the same vertically averaged N_{CD} (B06), so our results are insensitive to the assumption on homogenous or inhomogeneous mixing conditions. We have chosen to use the inhomogeneous mixing assumption in our analysis.

25 Combining all the discussed uncertainties in the individual input parameters, using Eqs. (6) and (7), we obtain a relative error in the calculation of N_{CD} and h of respectively 38% and 21%. The most important parameters contributing to these errors are Fr and A_{ad} . To illustrate the sensitivity of the cloud model to these two major sources of uncertainty on the error estimate, their combined effect is shown in Fig. 1.

Cloud droplet concentration over the boreal forest

R. H. H. Janssen et al.

[Title Page](#)[Abstract](#)[Introduction](#)[Conclusions](#)[References](#)[Tables](#)[Figures](#)[◀](#)[▶](#)[◀](#)[▶](#)[Back](#)[Close](#)[Full Screen / Esc](#)[Printer-friendly Version](#)[Interactive Discussion](#)

These large errors mean that the CCN that reach cloud base only partly explain N_{CD} and h as calculated by the model, due to variations in cloud microphysics and thermodynamics that are not constrained by the satellite data.

3 Results

We present an analysis of the seasonal cycle in N_{CD} and the relationship between N_{CD} and surface aerosol concentration and meteorology.

3.1 Seasonal cycle in N_{CD}

The seasonal cycles of satellite retrieved cloud properties from MODIS are shown in Fig. 2. The seasonal cycles in r_{eff} and τ show both largest values at the beginning of April and a rapid decrease to a minimum in late April. After that both variables increase again. A large interannual variability results in large uncertainties in the retrievals of r_{eff} in April. The cause of this large interannual variability for this period is not clear.

We conducted a sensitivity analysis to assess the changes in retrieved variable values as a function of the spatial domain over which the cloud properties are averaged. Changing the size of the box to $1 \times 1^\circ$ and $3 \times 3^\circ$ did not significantly impact these outcomes. To test the sensitivity of the retrievals to the definition of the cloud type, we relaxed the τ -constraint to include clouds with a optical thickness up to 100. This also did not change the seasonal cycle in observed cloud properties qualitatively.

The calculated seasonal cycle in N_{CD} mainly follows the variations in r_{eff} (Fig. 3a). Seasonal variations in τ only slightly dampen the seasonal cycle in N_{CD} . The real seasonal cycle in N_{CD} is expected to be less pronounced than depicted in Fig. 3, because of the dampening effect of the seasonal variation in A_{ad} on the N_{CD} , due to it's coupling to temperature as previously discussed in the section on error propagation. The range of absolute numbers of N_{CD} (between 40 and 100 per cm^3) are rather low for continental areas and resemble the numbers found by B06 for a remote marine location. N_{CD}

Cloud droplet concentration over the boreal forest

R. H. H. Janssen et al.

Title Page

Abstract

Introduction

Conclusions

References

Tables

Figures

◀

▶

◀

▶

Back

Close

Full Screen / Esc

Printer-friendly Version

Interactive Discussion



peaks in late April and early May. After experiencing a minimum in mid-summer, N_{CD} seems to increase again in September, although this increase is not significant.

The calculations of cloud thickness h follow the pattern of r_{eff} and τ , although the uncertainty of this result is large (Fig. 3d).

3.2 Relation to surface aerosol concentrations and meteorology

To find out if the seasonal cycle in N_{CD} is driven by the number of activated aerosols we compared it to surface concentrations of potential cloud nucleating aerosols. Since CCN-measurements are not available for the whole period of available satellite observations, we applied observations of aerosols with a diameter above a certain cut-off diameter as a proxy for CCN-concentrations (N_{CCN}) since size is in general a good indicator of ability of aerosols to act as CCN (Dusek et al., 2006). We find that the number concentration of aerosols with a diameter larger than 100 nm ($N_{>100}$ from here onwards) is the best proxy for N_{CCN} at 0.2% supersaturation (Fig. 4) with a correlation of $r = 0.78$ for the period July–September 2008 and April–June 2009.

The seasonal cycle in N_{CD} , however, does not resemble the seasonal cycle in $N_{>100}$ (Fig. 3). The latter does have a similar peak in spring as the former, but the maximum in summer in $N_{>100}$ can not be seen in the N_{CD} . Actually, comparing individual years, it turned out that the collective peak in spring is mainly reflecting a bias due to one year in which $N_{>100}$ had a very strong maximum in spring, which did not coincide with a maximum in N_{CD} for that year. The lack of correlation of N_{CD} and $N_{>100}$ can be seen from Fig. 5a. The correlation coefficient of the median seasonal cycles over all years in N_{CD} and $N_{>100}$ is $r = -0.23$, while for individual years it varies between $r = -0.37$ and $r = 0.25$. In addition, the absolute numbers of N_{CD} and $N_{>100}$ differ approximately by one order of magnitude which further supports the lack of a strong coupling between surface aerosol concentration and low-altitude clouds.

Sihto et al. (2010), however, found that at Hyytiälä the critical aerosol diameter for cloud droplet activation (d_{crit}) for a given supersaturation can vary considerably throughout the season, especially for low supersaturations. This may be caused by

Cloud droplet concentration over the boreal forest

R. H. H. Janssen et al.

Title Page

Abstract

Introduction

Conclusions

References

Tables

Figures

◀

▶

◀

▶

Back

Close

Full Screen / Esc

Printer-friendly Version

Interactive Discussion



the seasonal variation in chemical composition of the aerosol at Hyytiälä: the aerosol contains a large fraction of organics in summer and has a relatively large contribution from anthropogenic sources in winter. It means that the seasonal dynamics of N_{CCN} may be different from those of $N_{>100}$.

For CCN at 0.2% supersaturation d_{crit} varies roughly between 80 and 120 nm during the growing season (Sihto et al., 2010, Fig. 4). To test whether the lack of correlation with N_{CD} was a result of specifically using $N_{>100}$ as a proxy for low supersaturation CCN, we also tested the seasonal cycle in aerosol concentrations for values of d_{crit} of 80 and 120 nm ($N_{>80}$ and $N_{>120}$, respectively). $N_{>80}$ and $N_{>120}$ are added to Fig. 3 as respectively the upper and lower bound of the errorbars around $N_{>100}$. The seasonal cycle of all these variables show the same two peaks in spring and summer, respectively, and therefore we conclude that the lack of correlation between N_{CD} and N_{CCN} does not strongly depend on the selection of the particular threshold diameter of the aerosol.

We discuss the activation of aerosols into cloud droplets in terms of the activated fraction (F_{act}), here defined as:

$$F_{\text{act}} = \frac{N_{\text{CD}}}{N_{\text{CCN}}} \approx \frac{N_{\text{CD}}}{N_{>100}} (-) \quad (11)$$

where:

N_{CD} : cloud droplet number concentration (cm^{-3})

N_{CCN} : surface CCN-concentration (cm^{-3})

$N_{>100}$: proxy for surface N_{CCN} at 0.2% supersaturation (cm^{-3})

F_{act} thus gives information on the sensitivity of the cloud droplet activation to N_{CCN} . This means that we do not distinguish between whether activation of cloud droplets is limited by the transport of CCN from the surface to cloud base or whether the actual activation of the CCN as cloud droplets is limiting. It is important to note that this definition of F_{act} differs from others that are found in literature. In studies on cloud

Cloud droplet concentration over the boreal forest

R. H. H. Janssen et al.

Title Page

Abstract

Introduction

Conclusions

References

Tables

Figures

◀

▶

◀

▶

Back

Close

Full Screen / Esc

Printer-friendly Version

Interactive Discussion



droplet activation, the activated fraction is defined as the ratio between the total aerosol concentration (N_A) at cloud base and N_{CD} (Kulmala et al., 1993; Reutter et al., 2009). Another definition is used in studies of CCN-activation (Jurányi et al., 2010; Sihto et al., 2010), where F_{act} is defined as the ratio between N_A and N_{CCN} at the surface. These 5 different definitions are illustrated in Fig. 6.

In Fig. 5b we show that F_{act} is large for low $N_{>100}$ and small for high $N_{>100}$. This suggests that cloud droplet activation is not limited by the availability of cloud-nucleating aerosols; when $N_{>100}$ increases, droplet activation reaches saturation as can be seen from the decreasing F_{act} . This situation is described as a regime where cloud droplet 10 activation is updraft limited in a theoretical study of the influence of aerosol number, size and hygroscopicity on the cloud droplet activation of aerosols by Reutter et al. (2009) (see also Kulmala et al., 1993). When the updraft velocity is small, only a small fraction of the aerosols that reach cloud base activate as cloud droplets. Because these aerosols attract water, the supersaturation in the cloud is quenched, which inhibits further cloud droplet activation. Adding more aerosols will consequently not lead to more 15 cloud droplets. The behavior of F_{act} , as presented in Fig. 5b, is similar to their results for conditions of low updraft velocities and hence low supersaturations (Reutter et al., 2009, Fig. 4).

Information on the strength of convection could give more insight in the processes 20 behind this behavior. As an indicator for convection, we use the potential temperature difference close to the surface, which represents thermal (in)stability in the sub-cloud layer. We obtained these data from the ECMWF ERA-Interim dataset on the ECMWF Data Server for the same spatial domain as we have obtained cloud properties for. Figure 3 shows a strong correlation between N_{CD} and the potential temperature difference between 1000–950 hPa ($\Delta\theta_{1000-950}$) with a correlation coefficient $r = 0.79$. The median seasonal cycle over all years in N_{CD} and $\Delta\theta_{1000-950}$ both show two peaks in 25 in spring and early summer, while the minimum in N_{CD} during summer is less pronounced in $\Delta\theta_{1000-950}$.

Cloud droplet concentration over the boreal forest

R. H. H. Janssen et al.

[Title Page](#)[Abstract](#)[Introduction](#)[Conclusions](#)[References](#)[Tables](#)[Figures](#)[◀](#)[▶](#)[◀](#)[▶](#)[Back](#)[Close](#)[Full Screen / Esc](#)[Printer-friendly Version](#)[Interactive Discussion](#)

For the individual years, the correlations between N_{CD} and $\Delta\theta_{1000-950}$ are weaker and vary between 0.58 and 0.11, but the sign is consistently positive. A similar, but somewhat weaker, relation was found between N_{CD} and the potential temperature difference between 1000–900 hPa.

4 Discussion and conclusions

Our results show that there is a clear seasonal cycle in N_{CD} in low level liquid water clouds over Hyytiälä. This seasonal cycle can, however, not be explained by seasonal variations in concentrations of cloud active aerosols. Rather, the sharp decrease of activated fraction with increasing N_{CCN} suggests that droplet activation in the clouds that are included in our analysis is updraft-limited (cf. Reutter et al., 2009). The good correlation between N_{CD} and the stability of the boundary layer, as diagnosed from the potential temperature difference, further indicates that the transport and mixing of the aerosols from the surface to cloud base is an important factor for determining which part of the aerosols actually activate into cloud droplets. Both findings could be explained by the fact that the studied clouds, low-level stratiform clouds over the boreal forest, represent a cloud type and environment, respectively, which are not associated with the occurrence of strong convection. However, based on this analysis, we can not say whether the transport of aerosols from the surface to cloud base or the actual activation of those aerosols in the cloud is the limiting factor for cloud droplet activation (Fig. 6). Therefore, we use the term convective limitation to acknowledge that both the effects of transport and activation and possibly a combination of them could be limiting factors for cloud droplet activation.

Formation of convective cumulus clouds, on the other hand, is closely coupled to surface conditions (e.g. Brown et al., 2002) and to conditions of stronger convection and therefore higher updraft velocities. Consequently, for these clouds the signal of the N_{CD} is more likely to follow the N_{CCN} at the surface. So our results, with a focus on stratiform clouds, do not rule out the possibility that aerosols from the boreal forest

Cloud droplet concentration over the boreal forest

R. H. H. Janssen et al.

Title Page

Abstract

Introduction

Conclusions

References

Tables

Figures

◀

▶

◀

▶

Back

Close

Full Screen / Esc

Printer-friendly Version

Interactive Discussion



influence the other types of clouds over the forest. However, our results suggest that it is important to take the strength of convective transport into account when studying the AIE over boreal forests.

This convection-limitation may therefore be one of the factors to explain the weaker aerosol-cloud interaction as derived from satellite measurements of cloud properties combined with ground-based measurements of aerosol concentration, compared to ground-based measurements of both aerosols and cloud properties only as found by Lihavainen et al. (2010) for the northern high-latitude site Pallas. For the boundary layer clouds which are included in their satellite observations, the transport of aerosols to- and their activation in the cloud may be a limiting factor for their influence on cloud properties. This may be less important for the very low altitude clouds, which are that close to the surface that they surround the measurement station during some of the time.

Opposite to our results, Boers et al. (2006) found a clear relation between N_{CD} and N_{CCN} . They, however, studied clouds over the ocean, which do not experience the strong diurnal cycle in atmospheric boundary layer as over land. Therefore a well-mixed boundary layer is almost constantly present, which facilitates the transport of aerosol particles from the ocean surface to cloud base. The low values of N_{CD} that they find may indicate an aerosol-limited regime of cloud droplet activation.

The method to retrieve N_{CD} that we applied in our study represents the state-of-the-art of current remote sensing techniques at high latitudes. Still, the error in the calculation of N_{CD} is large due to uncertainties in the representation of cloud microphysics and thermodynamics. This large error may cause N_{CD} to vary independently from the number of CCN that actually reach cloud base. In this case, we find that there is a seasonal cycle in N_{CD} that has a distinct shape that can not be explained by a systematic seasonal variance in one of the input factors or cloud model parameters. Roebeling et al. (2008) showed that the method of B06 works well for carefully selected conditions (no drizzle, single layer, homogeneous in space and time, water phase), preferably supported with ground-based observations (lidar, radar, information

Cloud droplet concentration over the boreal forest

R. H. H. Janssen et al.

Title Page

Abstract

Introduction

Conclusions

References

Tables

Figures



Back

Close

Full Screen / Esc

Printer-friendly Version

Interactive Discussion



about cloud base height and temperature). However, in their study over the Netherlands the number of cases that met the boundary conditions was limited. The same may be the case over Finland. Thus proving the first AIE from satellite retrievals requires very careful selection of representative cases. Therefore, we recommend that these satellite derived observations of N_{CD} should be validated with in-situ measurements of cloud properties over the boreal forest, for example by radiosonde or airplane measurements or by ground based remote sensing.

The data presented in this study are among the first observations of cloud properties over the boreal forest, related to the production of cloud active aerosols by the forest. We find that the N_{CD} in the studied clouds is insensitive to aerosol concentrations at the surface. Furthermore, information on the vertical structure of the atmosphere indicates that low N_{CD} is related to stable atmospheric conditions. From the combination of these two findings we conclude that convection may be a limiting factor for the activation of aerosols from the boreal forest as cloud droplets. Our analysis suggests that studies that do not take the role of convection into account when assessing the impact of aerosols from the boreal forest on cloud properties may overestimate their indirect radiative forcing. It stresses the need for a stronger involvement of the boundary layer and cloud research communities in such analysis of land-atmosphere interactions focusing on aerosols-cloud feedback mechanisms.

Acknowledgements. The authors would like to thank Sanna-Liisa Sihto and Michael Boy for making the CCN-measurements available and Reinout Boers and Chiel van Heerwaarden for their help with the cloud model. The financial support by the European Research Council project ATMNUCLE (project no. 227463) and the Academy of Finland Center of Excellence program (project no. 211483, 211484 and 1118615) is acknowledged.

Cloud droplet concentration over the boreal forest

R. H. H. Janssen et al.

Title Page

Abstract

Introduction

Conclusions

References

Tables

Figures

◀

▶

◀

▶

Back

Close

Full Screen / Esc

Printer-friendly Version

Interactive Discussion



References

- Aalto, P., Hämeri, K., Becker, E. D. O., Weber, R., Salm, J., Mäkelä, J. M., Hoell, C., O'Dowd, C. D., Karlsson, H., Hansson, H.-C., Väkevä, M., Koponen, I. K., Buzorius, G., and Kulmala, M.: Physical characterization of aerosol particles during nucleation events, *Tellus B*, 53, 344–358, 2001.
- Albrecht, B. A.: Aerosols, Cloud Microphysics, and Fractional Cloudiness, *Science*, 245, 1227–1230, 1989.
- Allan, J. D., Alfarra, M. R., Bower, K. N., Coe, H., Jayne, J. T., Worsnop, D. R., Aalto, P. P., Kulmala, M., Hyötyläinen, T., Cavalli, F., and Laaksonen, A.: Size and composition measurements of background aerosol and new particle growth in a Finnish forest during QUEST 2 using an Aerodyne Aerosol Mass Spectrometer, *Atmos. Chem. Phys.*, 6, 315–327, doi:10.5194/acp-6-315-2006, 2006.
- Andreae, M. O., and Rosenfeld, D.: Aerosol-cloud-precipitation interactions. Part 1. The nature and sources of cloud-active aerosols, *Earth-Sci. Rev.*, 89, 13–41, 2008.
- Bala, G., Caldeira, K., Wickett, M., Phillips, T. J., Lobell, D. B., Delire, C., and Mirin, A.: Combined climate and carbon-cycle effects of large-scale deforestation, *P. Natl. Acad. Sci. USA*, 104, 6550–6555, 2007.
- Bennartz, R.: Global assessment of marine boundary layer cloud droplet number concentration from satellite, *J. Geophys. Res.*, 112, D02201, doi:10.1029/2006JD007547, 2007.
- Betts, R. A.: Offset of the potential carbon sink from boreal forestation by decreases in surface albedo, *Nature*, 408, 187–190, 2000.
- Betts, A. K. and Harshvardhan: Thermodynamic constraint on the cloud liquid water feedback in climate models, *J. Geophys. Res.*, 92, 8483–8485, 1987.
- Boers, R. and Rotstayn, L. D.: Possible links between cloud optical depth and effective radius in remote sensing observations, *Q. J. Roy. Meteor. Soc.*, 127, 2367–2–383, 2001.
- Boers, R., Acarreta, J. R., and Gras, J. L.: Satellite monitoring of the first indirect aerosol effect: Retrieval of the droplet concentration of water clouds, *J. Geophys. Res.*, 111, D22208, doi:10.1029/2005JD006838, 2006.
- Brown, A. R., Cederwall, R. T., Chlond, A., Duynkerke, P. G., Golaz, J. C., Khairoutdinov, M., Lewellen, D. C., Lock, A. P., MacVean, M. K., Moeng, C. H., Neggers, R. A. J., Siebesma, A. P., and Stevens, B.: Large-eddy simulation of the diurnal cycle of shallow cumulus convection over land, *Q. J. Roy. Meteor. Soc.*, 128, 1075–1093, 2002.

Cloud droplet concentration over the boreal forest

R. H. H. Janssen et al.

Title Page

Abstract

Introduction

Conclusions

References

Tables

Figures



Back

Close

Full Screen / Esc

Printer-friendly Version

Interactive Discussion



**Cloud droplet
concentration over
the boreal forest**

R. H. H. Janssen et al.

Title Page

Abstract

Introduction

Conclusions

References

Tables

Figures

◀

▶

◀

▶

Back

Close

Full Screen / Esc

Printer-friendly Version

Interactive Discussion



Carslaw, K. S., Boucher, O., Spracklen, D. V., Mann, G. W., Rae, J. G. L., Woodward, S., and Kulmala, M.: A review of natural aerosol interactions and feedbacks within the Earth system, *Atmos. Chem. Phys.*, 10, 1701–1737, doi:10.5194/acp-10-1701-2010, 2010.

5 Cavalli, F., Facchini, M. C., Decesari, S., Emblico, L., Mircea, M., Jensen, N. R., and Fuzzi, S.: Size-segregated aerosol chemical composition at a boreal site in southern Finland, during the QUEST project, *Atmos. Chem. Phys.*, 6, 993–1002, doi:10.5194/acp-6-993-2006, 2006.

10 Dal Maso, M., Sogacheva, L., Aalto, P. P., Riipinen, I., Komppula, M., Tunved, P., Korhonen, L., Suur-Uski, V., Hirsikko, A., Kurtén, T., Kerminen, V.-M., Lihavainen, H., Yrjö, V., Hansson, H.-C., and Kulmala, M.: Aerosol size distribution measurements at four Nordic field stations: identification, analysis and trajectory analysis of new particle formation bursts, *Tellus B*, 59, 350–361, 2007.

15 Dal Maso, M., Hyvärinen, A., Komppula, M., Tunved, P., Kerminen, V.-M., Lihavainen, H., Viisanen, Y., Hansson, H.-C., and Kulmala, M.: Annual and interannual variation in boreal forest aerosol particle number and volume concentration and their connection to particle formation, *Tellus B*, 60, 495–508, 2008.

Dusek, U., Frank, G. P., Hildebrandt, L., Curtius, J., Schneider, J., Walter, S., Chand, D., Drewnick, F., Hings, S., Jung, D., Borrmann, S., and Andreae, M. O.: Size matters more than chemistry for cloud-nucleating ability of aerosol particles, *Science*, 312, 1375–1378, 2006.

20 Hakola, H., Tarvainen, V., Laurila, T., Hiltunen, V., Hellén, H., and Keronen, P.: Seasonal variation of VOC concentrations above a boreal coniferous forest, *Atmos. Environ.*, 37, 1623–1634, 2003.

Hari, P. and Kulmala, M.: Station for Measuring Ecosystem-Atmosphere Relations (SMEAR II), *Boreal Env. Res.*, 10, 315–322, 2005.

25 Jurányi, Z., Gysel, M., Weingartner, E., DeCarlo, P. F., Kammermann, L., and Baltensperger, U.: Measured and modelled cloud condensation nuclei number concentration at the high alpine site Jungfraujoch, *Atmos. Chem. Phys.*, 10, 7891–7906, doi:10.5194/acp-10-7891-2010, 2010.

Kavouras, I. G., Mihalopoulos, N., and Stephanou, E. G.: Formation of atmospheric particles from organic acids produced by forests, *Nature*, 395, 683–686, 1998.

30 Kerminen, V.-M., Lihavainen, H., Komppula, M., Viisanen, Y., and Kulmala, M.: Direct observational evidence linking atmospheric aerosol formation and cloud droplet activation, *Geophys. Res. Lett.*, 32, L14803, doi:10.1029/2005GL023130, 2005.

**Cloud droplet
concentration over
the boreal forest**

R. H. H. Janssen et al.

Title Page

Abstract

Introduction

Conclusions

References

Tables

Figures

◀

▶

◀

▶

Back

Close

Full Screen / Esc

Printer-friendly Version

Interactive Discussion



King, M. D., Platnick, S. E., Hubanks, P. A., Arnold, G. T., Wind, G., and Wind, B.: Collection 005 change summary for the MODIS cloud optical property (06_OD) algorithm, in: Collection 005 Change Summary Documents, Level-2MODISAtmosphere Products, version 3.1, 9 May 2006 NASA Goddard Space Flight Cent., Greenbelt, Md., available at: http://modis-atmos.gsfc.nasa.gov/products_C005update.html. 2006.

Komppula, M., Lihavainen, H., Kerminen, V.-M., Kulmala, M., and Viisanen, Y.: Measurements of cloud droplet activation of aerosol particles at a clean subarctic background site, *J. Geophys. Res.*, 110, D06204, doi:10.1029/2004JD005200, 2005.

Kulmala, M., Laaksonen, A., Korhonen, P., Vesala, T., Ahonen, T., and Barrett, J. C.: The effect of atmospheric nitric acid vapor on cloud condensation nucleus activation, *J. Geophys. Res.*, 98, 22949–22958, 1993.

Kulmala, M., Hameri, K., Aalto, P. P., Makela, J. M., Pirjola, L., Nilsson, E. D., Buzorius, G., Rannik, U., Maso, M. D., Seidl, W., Hoffman, T., Janson, R., Hansson, H. C., Viisanen, Y., Laaksonen, A., and O'Dowd, C. D.: Overview of the international project on biogenic aerosol formation in the boreal forest (BIOFOR), *Tellus B*, 53, 324–343, 2001.

Kulmala, M., Suni, T., Lehtinen, K. E. J., Dal Maso, M., Boy, M., Reissell, A., Rannik, Ü., Aalto, P., Keronen, P., Hakola, H., Bäck, J., Hoffmann, T., Vesala, T., and Hari, P.: A new feedback mechanism linking forests, aerosols, and climate, *Atmos. Chem. Phys.*, 4, 557–562, doi:10.5194/acp-4-557-2004, 2004.

Kurtén, T., Kulmala, M., Dal Maso, M., Suni, T., Reissell, A., Vehkamäki, H., Hari, P., Laaksonen, A., Viisanen, Y., and Vesala, T.: Estimation of different forest-related contributions to the radiative balance using observations in southern Finland, *Boreal Env. Res.*, 8, 275–285, 2003.

Laaksonen, A., Kulmala, M., O'Dowd, C. D., Joutsensaari, J., Vaattovaara, P., Mikkonen, S., Lehtinen, K. E. J., Sogacheva, L., Dal Maso, M., Aalto, P., Petäjä, T., Sogachev, A., Yoon, Y. J., Lihavainen, H., Nilsson, D., Facchini, M. C., Cavalli, F., Fuzzi, S., Hoffmann, T., Arnold, F., Hanke, M., Sellegri, K., Umann, B., Junkermann, W., Coe, H., Allan, J. D., Alfarra, M. R., Worsnop, D. R., Riekkola, M.-L., Hyötyläinen, T., and Viisanen, Y.: The role of VOC oxidation products in continental new particle formation, *Atmos. Chem. Phys.*, 8, 2657–2665, doi:10.5194/acp-8-2657-2008, 2008.

Lappalainen, H. K., Sevanto, S., Bäck, J., Ruuskanen, T. M., Kolari, P., Taipale, R., Rinne, J., Kulmala, M., and Hari, P.: Day-time concentrations of biogenic volatile organic compounds in a boreal forest canopy and their relation to environmental and biological factors, *Atmos.*

**Cloud droplet
concentration over
the boreal forest**

R. H. H. Janssen et al.

Title Page

Abstract

Introduction

Conclusions

References

Tables

Figures



Back

Close

Full Screen / Esc

Printer-friendly Version

Interactive Discussion



Chem. Phys., 9, 5447–5459, doi:10.5194/acp-9-5447-2009, 2009.

Lihavainen, H., Kerminen, V. M., Komppula, M., Hatakka, J., Aaltonen, V., Kulmala, M., and Viisanen, Y.: Production of 'potential' cloud condensation nuclei associated with atmospheric new-particle formation in northern Finland, *J. Geophys. Res.*, 108, 4782, doi:10.1029/2003JD003887, 2003.

Lihavainen, H., Kerminen, V.-M., Komppula, M., Hyvärinen, A.-P., Laakia, J., Saarikoski, S., Makkonen, U., Kivekäs, N., Hillamo, R., Kulmala, M., and Viisanen, Y.: Measurements of the relation between aerosol properties and microphysics and chemistry of low level liquid water clouds in Northern Finland, *Atmos. Chem. Phys.*, 8, 6925–6938, doi:10.5194/acp-8-6925-2008, 2008.

Lihavainen, H., Kerminen, V.-M., and Remer, L. A.: Aerosol-cloud interaction determined by both in situ and satellite data over a northern high-latitude site, *Atmos. Chem. Phys.*, 10, 10987–10995, doi:10.5194/acp-10-10987-2010, 2010.

Lohmann, U. and Feichter, J.: Global indirect aerosol effects: a review, *Atmos. Chem. Phys.*, 5, 715–737, doi:10.5194/acp-5-715-2005, 2005.

McFiggans, G., Artaxo, P., Baltensperger, U., Coe, H., Facchini, M. C., Feingold, G., Fuzzi, S., Gysel, M., Laaksonen, A., Lohmann, U., Mentel, T. F., Murphy, D. M., O'Dowd, C. D., Snider, J. R., and Weingartner, E.: The effect of physical and chemical aerosol properties on warm cloud droplet activation, *Atmos. Chem. Phys.*, 6, 2593–2649, doi:10.5194/acp-6-2593-2006, 2006.

Nakajima, T., Higurashi, A., Kawamoto, K., and Penner, J. E.: A possible correlation between satellite-derived cloud and aerosol microphysical parameters, *Geophys. Res. Lett.*, 28, 1171–1174, 2001.

O'Dowd, C. D., Aalto, P., Hmeri, K., Kulmala, M., and Hoffmann, T.: Aerosol formation: Atmospheric particles from organic vapours, *Nature*, 416, 497–498, 2002.

O'Dowd, C. D., Yoon, Y. J., Junkermann, W., Aalto, P., Kulmala, M., Lihavainen, H., and Viisanen, Y.: Airborne measurements of nucleation mode particles II: boreal forest nucleation events, *Atmos. Chem. Phys.*, 9, 937–944, doi:10.5194/acp-9-937-2009, 2009.

Platnick, S. and Twomey, S.: Determining the susceptibility of cloud albedo to changes in droplet concentration with the Advanced Very High Resolution Radiometer, *J. Appl. Meteorol.*, 33, 334–347, 1994.

Platnick, S., King, M. D., Ackerman, S. A., Menzel, W. P., Baum, B. A., Riedi, J. C., and Frey, R. A.: The MODIS cloud products: Algorithms and examples from Terra, *IEEE T. Geosci.*

Cloud droplet concentration over the boreal forest

R. H. H. Janssen et al.

[Title Page](#)[Abstract](#)[Introduction](#)[Conclusions](#)[References](#)[Tables](#)[Figures](#)[◀](#)[▶](#)[◀](#)[▶](#)[Back](#)[Close](#)[Full Screen / Esc](#)[Printer-friendly Version](#)[Interactive Discussion](#)

Remote., 41, 459–473, 2003.

Reutter, P., Su, H., Trentmann, J., Simmel, M., Rose, D., Gunthe, S. S., Wernli, H., Andreae, M. O., and Pöschl, U.: Aerosol- and updraft-limited regimes of cloud droplet formation: influence of particle number, size and hygroscopicity on the activation of cloud condensation nuclei (CCN), *Atmos. Chem. Phys.*, 9, 7067–7080, doi:10.5194/acp-9-7067-2009, 2009.

Roebeling, R. A., Placidi, S., Donovan, D. P., Russchenberg, H. W. J., and Feijt, A. J.: Validation of liquid cloud property retrievals from SEVIRI using ground-based observations, *Geophys. Res. Lett.*, 35, L05814, doi:10.1029/2007GL032115, 2008.

Sihto, S.-L., Mikkilä, J., Vanhanen, J., Ehn, M., Liao, L., Lehtipalo, K., Aalto, P. P., Duplissy, J., Petäjä, T., Kerminen, V.-M., Boy, M., and Kulmala, M.: Seasonal variation of CCN concentrations and aerosol activation properties in boreal forest, *Atmos. Chem. Phys. Discuss.*, 10, 28231–28272, doi:10.5194/acpd-10-28231-2010, 2010.

Sogacheva, L., Saukkonen, L., Nilsson, E. D., Maso, M. D., Schultz, D. M., Leeuw, G. D., and Kulmala, M.: New aerosol particle formation in different synoptic situations at Hyytiälä, Southern Finland, *Tellus B*, 60, 485–494, 2008.

Spracklen, D. V., Bonn, B., and Carslaw, K. S.: Boreal forests, aerosols and the impacts on clouds and climate, *Phil. Trans. R. Soc. A*, 366, 4613–4626, 2008.

Szczodrak, M., Austin, P. H., and Krummel, P. B.: Variability of optical depth and effective radius in marine stratocumulus clouds, *J. Atmos. Sci.*, 58, 2912–2926, 2001.

Tunved, P., Hansson, H. C., Kerminen, V. M., Strom, J., Maso, M. D., Lihavainen, H., Viisanen, Y., Aalto, P. P., Komppula, M., and Kulmala, M.: High natural aerosol loading over boreal forests, *Science*, 312, 261–263, 2006.

Tunved, P., Ström, J., Kulmala, M., Kerminen, V. M., Maso, M. D., Svenningsson, B., Lunder, C., and Hansson, H. C.: The natural aerosol over Northern Europe and its relation to anthropogenic emissions: implications of important climate feedbacks, *Tellus B*, 60, 473–484, 2008.

Twomey, S.: The influence of pollution on the shortwave albedo of clouds, *J. Atmos. Sci.*, 34, 1149–1152, 1977.

Várnai, T. and Marshak, A.: View angle dependence of cloud optical thicknesses retrieved by Moderate Resolution Imaging Spectroradiometer (MODIS), *J. Geophys. Res.*, 112, D06203, doi:10.1029/2005JD006912, 2007.

Cloud droplet concentration over the boreal forest

R. H. H. Janssen et al.

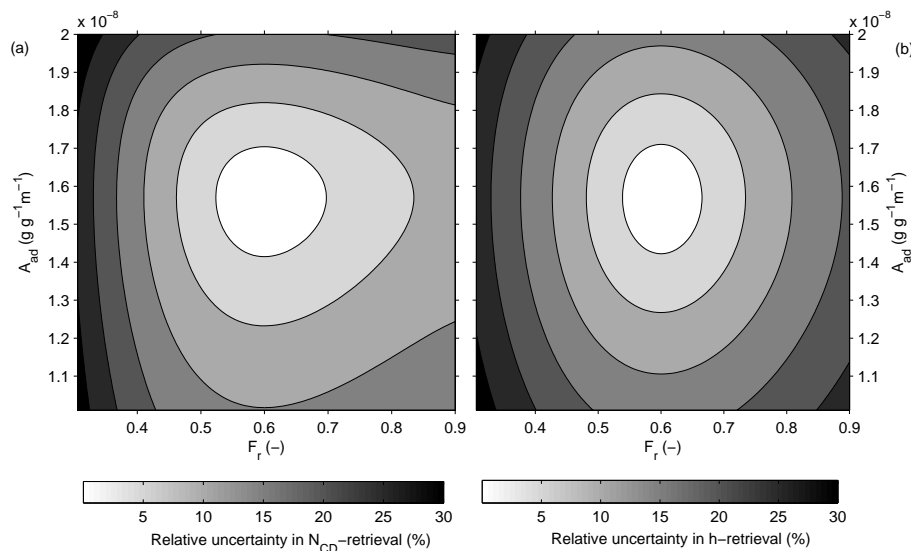


Fig. 1. Sensitivity analysis of the cloud model to subadiabatic fraction F_r and the adiabatic lapse ratio of liquid water content mixing ratio A_{ad} , which are the two major contributors to the total uncertainty in the retrievals of N_{CD} and h . The uncertainty is given in percent relative to the retrievals for the best guess of the respective parameters for **(a)** N_{CD} and **(b)** h . The calculations are performed with $r_{eff} = 12$ and $\tau = 9$.

[Title Page](#)
[Abstract](#)
[Introduction](#)
[Conclusions](#)
[References](#)
[Tables](#)
[Figures](#)
[◀](#)
[▶](#)
[◀](#)
[▶](#)
[Back](#)
[Close](#)
[Full Screen / Esc](#)
[Printer-friendly Version](#)
[Interactive Discussion](#)


Cloud droplet concentration over the boreal forest

R. H. H. Janssen et al.

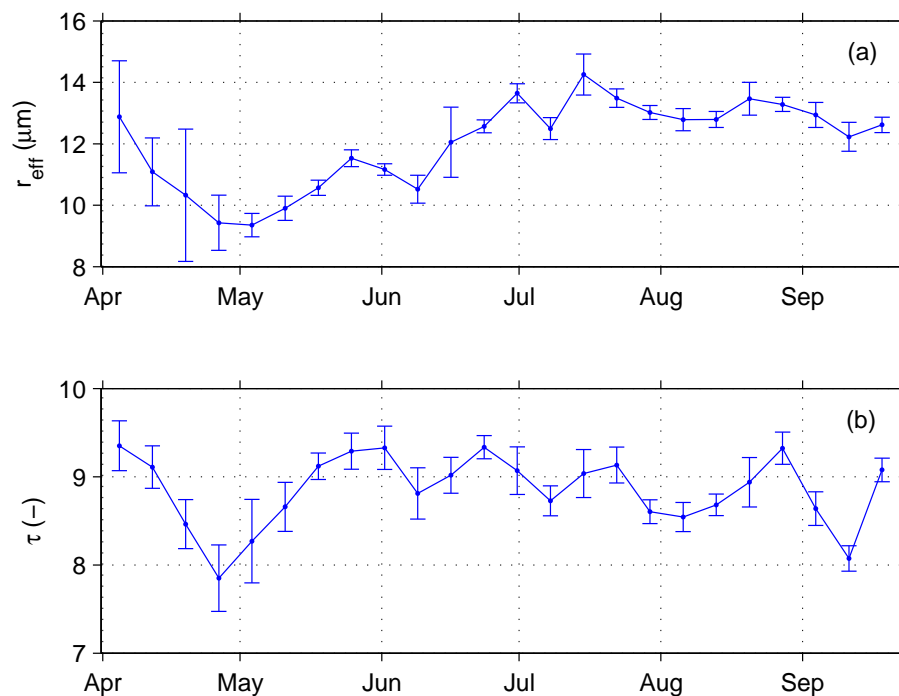


Fig. 2. Seasonal cycle in (a) MODIS effective radius r_{eff} and (b) cloud optical thickness τ over Hyytiälä for the years 2000 to 2008. Each datapoint corresponds to one of 24 bins, each representing the median value of the variable over all years.

[Title Page](#)[Abstract](#)[Introduction](#)[Conclusions](#)[References](#)[Tables](#)[Figures](#)[◀](#)[▶](#)[◀](#)[▶](#)[Back](#)[Close](#)[Full Screen / Esc](#)[Printer-friendly Version](#)[Interactive Discussion](#)

Cloud droplet concentration over the boreal forest

R. H. H. Janssen et al.

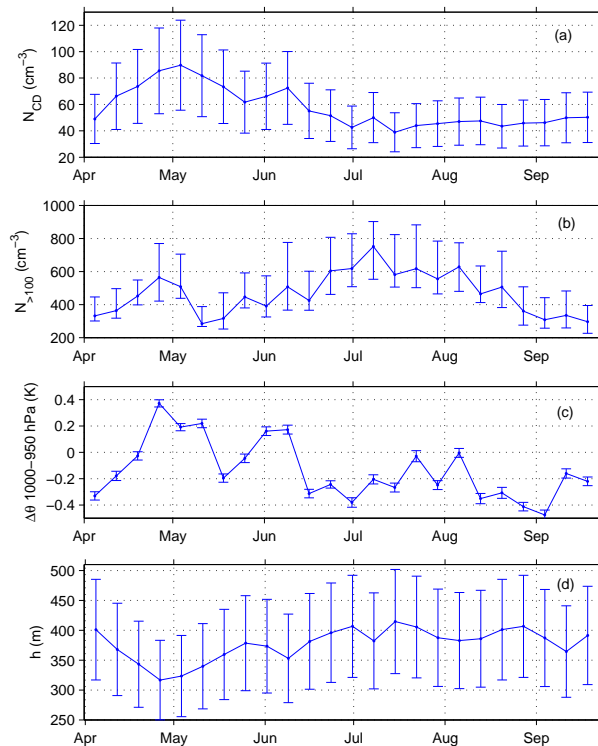


Fig. 3. Median seasonal cycle over 2000–2008 in **(a)** cloud droplet number concentration N_{CD} , **(b)** surface observations of CCN-proxy concentrations $N_{>100}$, **(c)** potential temperature difference between the 1000 and 950 hPa-level $\Delta\theta_{1000-950}$ and **(d)** cloud depth h . The errorbars in N_{CD} indicate the uncertainty as calculated in Sect. 2.4. The errorbars in $N_{>100}$ indicate the concentrations of aerosols larger than 80 nm ($N_{>80}$, upper limit) and larger than 120 nm ($N_{>120}$, lower limit), respectively, to account for the seasonal variation in critical diameter for CCN-activity of aerosols at Hyytiälä (Sihto et al., 2010). Errorbars in $\Delta\theta_{1000-950}$ designate the standard error. Meaning of datapoints as in Fig. 2.

[Title Page](#)
[Abstract](#)
[Introduction](#)
[Conclusions](#)
[References](#)
[Tables](#)
[Figures](#)
[◀](#)
[▶](#)
[◀](#)
[▶](#)
[Back](#)
[Close](#)
[Full Screen / Esc](#)
[Printer-friendly Version](#)
[Interactive Discussion](#)

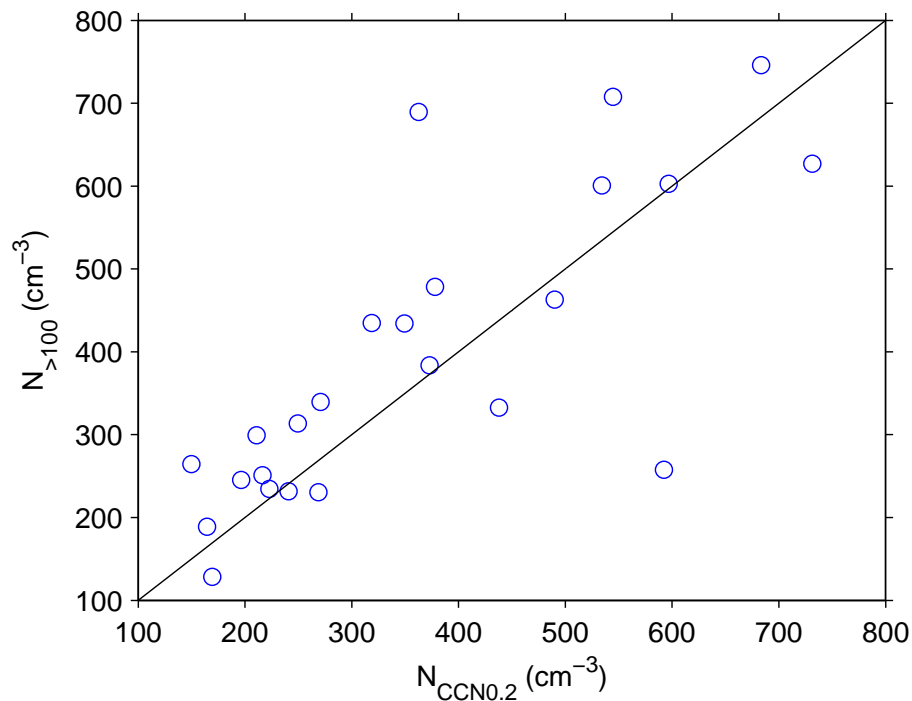



Fig. 4. Comparison of cloud condensation nuclei concentration at 0.2% supersaturation $N_{CCNO.2}$ and number concentration of aerosols with a diameter larger than 100 nm $N_{>100}$ for the period July–September 2008 and April–June 2009. The line with a slope of 1 is included for visual guidance. Correlation coefficient $r = 0.78$.

Cloud droplet concentration over the boreal forest

R. H. H. Janssen et al.

Title Page

Abstract Introduction

Conclusions References

Tables Figures

◀ ▶

◀ ▶

Back Close

Full Screen / Esc

Printer-friendly Version

Interactive Discussion



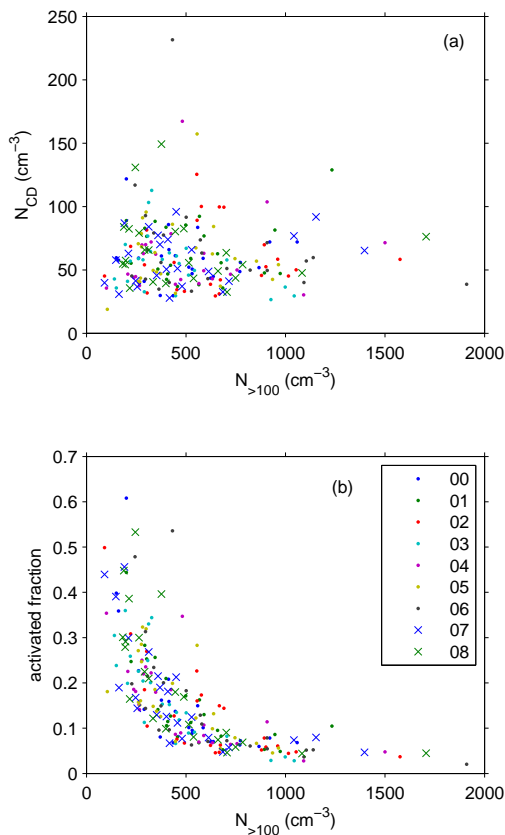


Fig. 5. (a) Comparison of CCN-proxy $N_{>100}$ and cloud droplet number concentration N_{CD} and (b) the activated fraction, defined as the ratio of N_{CD} and $N_{>100}$. Each data point represents the median of one bin, each bin representing a period of about one week over the years 2000 to 2008. The different marker colors and styles indicate the different years, as shown in the legend.

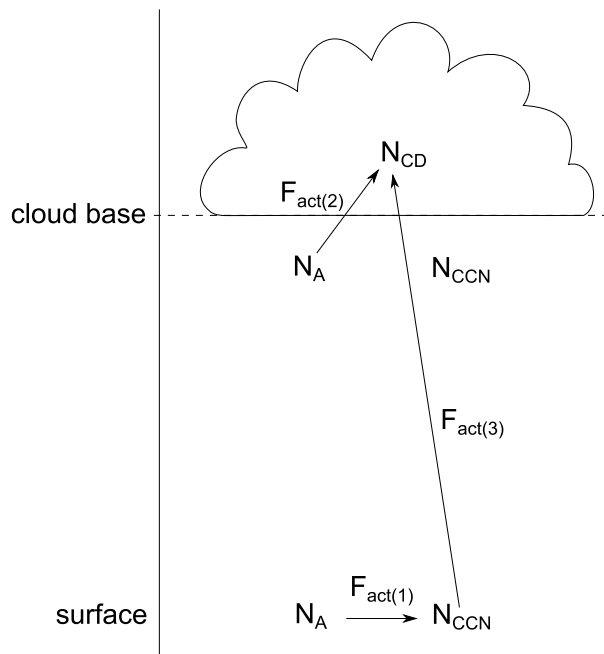


Fig. 6. Schematic illustration of the different definitions of activated fraction (F_{act}) as found in literature: F_{act} may refer to (1) the ratio of the ratio of the total aerosol concentration (N_A) and CCN-concentration (N_{CCN}) at the surface (e.g. Jurányi et al., 2010; Sihto et al., 2010), to (2) the ratio of N_A at cloud base and N_{CD} (e.g. Kulmala et al., 1993; Reutter et al., 2009). In the present study, F_{act} refers to (3) the ratio between N_{CCN} at the surface and N_{CD} .

Cloud droplet concentration over the boreal forest

R. H. H. Janssen et al.

Title Page	
Abstract	Introduction
Conclusions	References
Tables	Figures
◀	▶
◀	▶
Back	Close
Full Screen / Esc	
Printer-friendly Version	
Interactive Discussion	

