

**Simultaneous
satellite observations
of IO and BrO**

A. Schönhardt et al.

This discussion paper is/has been under review for the journal Atmospheric Chemistry and Physics (ACP). Please refer to the corresponding final paper in ACP if available.

Simultaneous satellite observations of IO and BrO over Antarctica

**A. Schönhardt¹, M. Begoin¹, A. Richter¹, F. Wittrock¹, L. Kaleschke²,
J. C. Gómez Martín³, and J. P. Burrows¹**

¹Institute of Environmental Physics (IUP), University of Bremen, Bremen, Germany

²KlimaCampus, Institute of Oceanography, University of Hamburg, Hamburg, Germany

³Laboratory for Atmospheric and Climate Science, CSIC, Toledo, Spain

Received: 11 October 2011 – Accepted: 8 December 2011 – Published: 21 December 2011

Correspondence to: A. Schönhardt (schoenhardt@iup.physik.uni-bremen.de)

Published by Copernicus Publications on behalf of the European Geosciences Union.

Title Page

Abstract

Introduction

Conclusions

References

Tables

Figures

◀

▶

◀

▶

Back

Close

Full Screen / Esc

Printer-friendly Version

Interactive Discussion



Abstract

This article reports on satellite observations of iodine monoxide (IO) and bromine monoxide (BrO). The region of interest is Antarctica in the time between spring and autumn. Both molecules, IO and BrO, are reactive halogen species and strongly influence tropospheric composition. As a result, a better understanding of their spatial distribution and temporal evolution is necessary to assess accurately their role in tropospheric chemistry. Especially in the case of IO, information on its present magnitude, spatial distribution patterns and source regions is still sparse.

The present study is based on six years of SCIAMACHY (SCanning Imaging Absorption spectroMeter for Atmospheric CartographY) data recorded in nadir viewing geometry. Multi-year averages of monthly mean IO columns are presented and compared to the distributions of BrO. Influences of the IO air mass factor and the IO absorption cross section temperature dependence on the absolute vertical columns are discussed. The long-term observations of IO and BrO columns yield new insight into the temporal and spatial variation of IO above the Antarctic region. The occurrence of IO on Antarctic sea ice in late spring (November) is discovered and presented. In addition, the comparison between IO and BrO distributions show many differences, which argues for different mechanisms and individual nature of the release of the two halogen oxide precursors. The state of the ecosystem, in particular the changing condition of the sea ice in late spring, is used to explain the observations of the IO behaviour over Antarctica and the differences between IO and BrO distributions.

1 Introduction

Reactive halogens such as iodine, bromine and their oxides have received growing attention in the past years owing to their strong impact on tropospheric composition. The attention for halogen oxides is intensified by the recently developed space based remote sensing instrumentation, which is yielding their amounts. In particular, reactive

ACPD

11, 33651–33688, 2011

Simultaneous satellite observations of IO and BrO

A. Schönhardt et al.

Title Page

Abstract

Introduction

Conclusions

References

Tables

Figures

◀

▶

◀

▶

Back

Close

Full Screen / Esc

Printer-friendly Version

Interactive Discussion



**Simultaneous
satellite observations
of IO and BrO**A. Schönhardt et al.

[Title Page](#)[Abstract](#)[Introduction](#)[Conclusions](#)[References](#)[Tables](#)[Figures](#)[⏪](#)[⏩](#)[◀](#)[▶](#)[Back](#)[Close](#)[Full Screen / Esc](#)[Printer-friendly Version](#)[Interactive Discussion](#)

halogens deplete ozone and alter the HO_x and NO_x ratios, consequently changing the oxidizing capacity of the troposphere. The halogen oxides iodine monoxide (IO) and bromine monoxide (BrO), generated from the reaction of atomic I and Br with ozone, play a central role in these processes (Barrie et al., 1988; Solomon et al., 1994; Carpenter et al., 2003; Platt and von Glasow, 2005; Simpson et al., 2007b).

A prominent example of tropospheric ozone loss by halogen chemistry are ozone depletion events in Polar Spring, closely linked to enhanced bromine levels and now understood to be initiated by the bromine explosion mechanism (Barrie et al., 1988; Platt and Hönninger, 2003). Furthermore, interest is motivated by observations that BrO acts as an oxidizing agent for gaseous mercury leading to enhanced bio-availability of mercury (Schröder et al., 1998; Steffen et al., 2008), and by clear evidence that IO may nucleate via self-reactions to larger iodine oxide molecules (Burkholder et al., 2004) forming atmospheric particles and eventually growing to cloud condensation nuclei (O'Dowd et al., 2002; McFiggans et al., 2004; O'Dowd and Hoffmann, 2005).

Iodine atoms may be released by photolysis of precursor substances such as I₂ or volatile iodocarbons emitted from the marine biosphere. Inorganic release processes are also being considered, but they are so far uncertain. Bromine precursors include organic as well as inorganic sources. The onset of the rapid bromine explosion was identified to be an inorganic mechanism. Through cross reactions between IO and BrO, the chemistry of the two halogens is linked. In this respect, the ozone destruction potential of IO and BrO together is larger than the sum of the individual impacts (Vogt et al., 1999). Modeling calculations have also shown that IO has a substantial impact on tropospheric composition even at small amounts (Vogt et al., 1999), and that neglecting tropospheric iodine and bromine chemistry in previous model studies may explain discrepancies between measured and predicted amounts of species like O₃, OH and HO₂ (Bloss et al., 2005; Read et al., 2008).

The occurrence of IO and BrO indicates ongoing active halogen chemistry. Knowledge of the abundances, distributions and variations of IO and BrO, spatially as well as temporally, is therefore necessary. Tropospheric BrO was first measured by Haus-

**Simultaneous
satellite observations
of IO and BrO**A. Schönhardt et al.

[Title Page](#)[Abstract](#)[Introduction](#)[Conclusions](#)[References](#)[Tables](#)[Figures](#)[⏪](#)[⏩](#)[◀](#)[▶](#)[Back](#)[Close](#)[Full Screen / Esc](#)[Printer-friendly Version](#)[Interactive Discussion](#)

mann et al. (1994) using ground-based long-path DOAS (Differential Optical Absorption Spectroscopy) measurements, and by Wittrock et al. (1996) and Miller et al. (1997) using scattered sunlight DOAS observations. After BrO was observed in the Antarctic lower stratosphere by ground-based spectroscopy (Solomon et al., 1989; Carroll et al., 1989) and insitu aircraft measurements (Brune et al., 1989), Kreher et al. (1997) provided evidence of boundary layer BrO in the Antarctic also using passive DOAS measurements. Satellite observations in 1998 first showed the widespread nature of BrO occurrence in Polar Spring (Richter et al., 1998; Wagner and Platt, 1998).

IO was first detected in the atmosphere in 1999 by Aliche et al. by ground-based, active DOAS in the mid-latitudes, and its occurrence was linked to a combination of close-by algae beds, low tide, and strong solar illumination (Carpenter et al., 1999). Since then, further measurement campaigns have observed IO by active and passive DOAS in the marine boundary layer (MBL) at several locations of the world, e.g. at mid-latitude coasts and (sub)-tropical marine sites (Allan et al., 2000; Peters et al., 2005; Saiz-Lopez et al., 2006; Oetjen, 2009) and in Polar Regions (Wittrock et al., 2000; Frieß et al., 2001; Saiz-Lopez et al., 2007a) with typical concentrations up to a few ppt. IO amounts in the Arctic were found to be much lower than in the Antarctic, and often below detection limit (Hönninger et al., 2004; Mahajan et al., 2010). Two in-situ methods, cavity ring-down spectroscopy as well as the technique of laser induced fluorescence, were successfully used to determine IO concentrations in the mid-latitude MBL (Wada et al., 2007; Whalley et al., 2007). Measurements from balloons so far show that IO amounts in the stratosphere are below detection limit of 0.1 ppt (Pundt et al., 1998; Bösch et al., 2003; Butz et al., 2009), however, no such investigations have been performed in Antarctica yet.

Through laboratory studies, better understanding of the reaction pathways of IO and its products has been achieved (Himmelmann et al., 1996; Bloss et al., 2001; Gómez Martín et al., 2007, 2009), and incubation studies have demonstrated the release of iodocarbons from algae and phytoplankton (Pedersén et al., 1996). Interestingly, polar algae seem to emit larger amounts of iodine compounds than their subtropical relatives

(Giese et al., 1999), similar to cold water diatoms in comparison to temperate species (Tokarczyk and Moore, 1994; Moore et al., 1996).

Focussing on iodine species in Antarctica, IO has been observed at a few locations by ground-based instruments (Frieß et al., 2001, 2010; Saiz-Lopez et al., 2007a).

5 Large amounts around 10 ppt with singular events up to 20 ppt have been detected occasionally in the boundary layer. However, the abundances are highly variable. Concerning the altitude profile of IO, knowledge is rather limited. Significant abundances in large altitudes have not yet been detected. The suggestion that IO is situated in the boundary layer, possibly only in the lowest few tens of metres, is supported by
10 modeling studies (Saiz-Lopez et al., 2008a) as well as by recent multi-axis DOAS measurements at Halley, Antarctica (Howard Roscoe, personal communication). Indications were reported that a significant fraction of IO might possibly even be located within the snow (Frieß et al., 2010). Satellite observations reveal substantial amounts of IO above the Antarctic region. Global maps of IO, observed by the satellite sensor
15 SCIAMACHY (SCanning Imaging Absorption spectroMeter for Atmospheric CartographY), have been published previously (Schönhardt et al., 2008) with a focus on seasonal averages. A study of four selected days of satellite observations above the Antarctic was published by Saiz-Lopez et al. (2007b).

In the present study, more details on the spatial and temporal variation of IO distributions are presented, based on six entire years of SCIAMACHY observations. The
20 satellite sensor SCIAMACHY will be introduced, and the measurement method and applied retrieval parameters for the IO and BrO retrievals are summarized. A focus of the present study is the time series of Antarctic IO maps, for which first the averaging technique is explained and then the spatial and temporal variation of IO is described.
25 Simultaneous IO and BrO observations are compared, and due to the importance of the sea ice cover in this area, observations of the sea ice concentrations are used to analyse specific IO occurrences.

**Simultaneous
satellite observations
of IO and BrO**

A. Schönhardt et al.

Title Page

Abstract

Introduction

Conclusions

References

Tables

Figures

◀

▶

◀

▶

Back

Close

Full Screen / Esc

Printer-friendly Version

Interactive Discussion



2 Instrument

SCIAMACHY is a UV-vis-NIR spectrometer measuring in nadir, limb and occultation modes from onboard the European Environmental Satellite (ENVISAT). ENVISAT is moving in a sun-synchronous, near-polar orbit since March 2002 with a local equator crossing time of 10:00 a.m. The wavelength region covered by SCIAMACHY is divided into eight channels within the ranges of 214–1773 nm, 1934–2044 nm and 2259–2386 nm. The instrument records direct, scattered and reflected sun light. Measurements used in the present study are nadir observations from channel 3, clusters 14 and 15 (404–527 nm) with a spectral resolution of 0.44 nm, as well as from channel 2, clusters 9 and 10 (310–391 nm) with a spectral resolution of 0.26 nm. Further details on the instrument, measurement modes and mission objectives can be found in Burrows et al. (1995); Bovensmann et al. (1999); Gottwald et al. (2006) and Gottwald and Bovensmann (2011).

3 IO and BrO retrieval algorithms

The column amounts of IO and BrO are quantified by using the well-established DOAS algorithm (Platt and Perner, 1980; Platt and Stutz, 2008). Table 1 lists the relevant retrieval settings. IO is retrieved in the wavelength interval of 416–430 nm, and the fitting window for BrO lies at 336–347 nm. In both cases a high-pass filter polynomial was applied to the measured optical density $\ln(I_0/I)$ in order to eliminate broad-band spectral structures. Here, I is the analysed nadir spectrum and I_0 is a reference background spectrum, ideally free of absorber influences. For the case of BrO, a daily solar spectrum was chosen as I_0 . An improved retrieval quality was achieved by the choice of an averaged daily earthshine spectrum in the case of IO (Schönhardt et al., 2008).

The IO retrieval had originally been tested in spectral regions also including wavelengths above 430 nm. By using e.g. the spectral window of 418–438 nm, similar results, especially in pattern, were obtained as compared to results then reported by

Simultaneous satellite observations of IO and BrO

A. Schönhardt et al.

Title Page

Abstract

Introduction

Conclusions

References

Tables

Figures

◀

▶

◀

▶

Back

Close

Full Screen / Esc

Printer-friendly Version

Interactive Discussion



**Simultaneous
satellite observations
of IO and BrO**A. Schönhardt et al.

Title Page

Abstract

Introduction

Conclusions

References

Tables

Figures

◀

▶

◀

▶

Back

Close

Full Screen / Esc

Printer-friendly Version

Interactive Discussion



Saiz-Lopez et al. (2007b). However, using the larger spectral windows, also noticeably large fitting errors in the areas of supposed IO observation had occurred. There is an interference, which we attribute to residual error associated with the atmospheric radiative transfer in strong Fraunhofer lines. This makes the larger spectral windows at present unsuitable for IO retrieval from space. Consequently, the retrieval had been moved to a different fitting window to avoid the Fraunhofer band around 430.5 nm (Schönhardt et al., 2008).

Another question relevant to the IO retrieval is the dependence of its absorption spectrum on temperature (cf. BrO, Fleischmann et al., 2004). Although previous laboratory work has found a significant dependence on temperature of the IO peak absorption cross section of the (4–0) band (Bloss et al., 2001), full range spectra at low temperatures have not been reported to date. Moreover, no attempt has been made to quantify the systematic error resulting from using the 298 K reference spectrum for ground- or satellite-based observations in Polar Regions. In order to elucidate this question, laboratory experiments have been carried out where low resolution IO spectra have been recorded in the temperature range between 233 and 298 K (see Supplement). These experiments show that as a result of depopulation of high rotational levels of the ground vibrational state with decreasing temperature, the IO bands become narrower and grow higher, resulting in a difference of 35 % between the (4–0) band peak-to-valley cross sections at 233 and 298 K. The overall effect when using the 298 K reference spectrum for atmospheric retrievals at 243 K is an overestimation of around 20 % of IO concentrations or column densities. Due to the simultaneous narrowing and growing of the absorption bands at colder temperatures, the magnitude of the temperature effect depends on the spectral resolution of the recording spectrometer. At a finer spectral resolution (such as for SCIAMACHY) a slightly stronger influence is expected, while a broader resolution will attenuate the temperature effect. More information as well as the temperature dependent reference spectra of IO are being made available at <http://www.iup.physik.uni-bremen.de/gruppen/molspec/databases/referencespectra/iospectra/index.html>.

**Simultaneous
satellite observations
of IO and BrO**A. Schönhardt et al.

[Title Page](#)[Abstract](#)[Introduction](#)[Conclusions](#)[References](#)[Tables](#)[Figures](#)[⏪](#)[⏩](#)[◀](#)[▶](#)[Back](#)[Close](#)[Full Screen / Esc](#)[Printer-friendly Version](#)[Interactive Discussion](#)

From the DOAS retrieval, the slant columns of the trace gases are determined. The slant column is the average of the trace gas density integrated over the specific light paths of the recorded light. In order to transform this amount into a vertical column, i.e. the trace gas concentration integrated vertically through the altitude layers, the air mass factor (AMF) needs to be applied. The AMF describes the relative light path length through an absorber layer and is represented by the ratio of slant column to vertical column.

The averaged IO vertical column above Antarctica for the years 2004 to 2009 is shown as first overview in Fig. 1. Average columns reach up to 1.9×10^{12} molec cm⁻². For individual measurements, also larger IO amounts are detected. Over widespread areas the vertical column lies between 1.0×10^{12} molec cm⁻² and 1.5×10^{12} molec cm⁻². The detection limit for single recordings lies around 7×10^{12} molec cm⁻² for the slant column, corresponding to a vertical column around 1.7×10^{12} molec cm⁻² over snow and ice, depending on the AMF. This detection limit is reduced by temporal averaging, as performed in this study.

The AMFs used here were calculated by the radiative transfer code SCIATRAN (Rozanov et al., 2002; Rozanov et al., 2005a). A surface spectral reflectance of $a = 0.90$ and a pure Rayleigh atmosphere were assumed. Aerosols influence the sensitivity of the measurement and hence the AMF, however, treatment of aerosols has been neglected in the present case as Antarctic aerosol concentrations are fairly low. Aerosol observations from space over snow and ice are more challenging than over the ocean or land, so a complete set of aerosol information for the time and space covered by the IO analysis is not readily available yet.

For the case of bright reflecting surfaces, the influence of aerosols on the AMF remains small in comparison to dark scenes. Generally, SCIAMACHY offers better sensitivity of IO observations over snow and ice. In the current treatment of Antarctic IO, amounts over the open ocean are underestimated as the surface effect cannot be fully taken into account. A more elaborate consideration of the AMF may be performed as soon as more information on the atmospheric conditions of the considered scenarios

is available.

For the AMF calculation, the assumed trace gas profile is an important input information. Current understanding is that most of the IO is situated in the lower boundary layer (Saiz-Lopez et al., 2008a; Mahajan et al., 2010). No measurements of significantly large stratospheric iodine amounts above Antarctica have been reported yet. For this study, consequently, a tropospheric IO content at low altitudes is assumed.

The AMF values for IO used in this work, were computed for a wavelength of 425 nm and varying solar zenith angle (SZA). The result is plotted in Fig. 2. For the final calculation of vertical columns, an IO box profile in the lowest 1 km of the troposphere was assumed. Clearly, in the near polar regions, boundary layer heights may reduce to much lower altitudes. However, the difference for the AMF when assuming a 1 km or a 100 m box profile for IO is fairly small. This can be seen in Fig. 2, where the AMFs for these two profiles in dependence of the SZA are shown, for a 1 km box profile in blue and for a 100 m profile in red for comparison. The AMF varies between about 3.1 and 4.6 with changing SZA, and the difference between the two profile cases remains below 7% above bright surfaces such as snow and ice. The assumed trace gas profile has much larger impact a) above dark surfaces and b) on deduced values of the volume mixing ratio.

For BrO, the situation is different. Considerable amounts of BrO are situated in the stratosphere (Rozanov et al., 2005b). In order to take into account the notable amounts of stratospheric BrO with vertical columns of around 5×10^{13} molec cm⁻², a stratospheric AMF is applied to the BrO slant columns (Richter et al., 1998). Depending on the actual vertical distribution, the tropospheric BrO part tends to be underestimated by this procedure, for smaller SZA some overestimation is possible (up to around 50%). The observed spatial patterns of tropospheric BrO in Antarctica, however, do not depend crucially on the treatment of the AMF. Again, the impact of the profile treatment would be larger over dark scenes. For elaborated studies on BrO air mass factors, please refer to Begoin et al. (2010) and Theys et al. (2011).

**Simultaneous
satellite observations
of IO and BrO**

A. Schönhardt et al.

Title Page

Abstract

Introduction

Conclusions

References

Tables

Figures

◀

▶

◀

▶

Back

Close

Full Screen / Esc

Printer-friendly Version

Interactive Discussion



4 Data set and averaging procedure

In total, six years of SCIAMACHY nadir data are used in this study. The period covers the years from 2004 to 2009. Due to the comparably small amounts of IO close to the detection limit of the instrument (Schönhardt et al., 2008), it is necessary to average IO results over several weeks to months to create maps with sufficient data quality. After suitable averaging steps, details on the spatial distribution and temporal variation of IO become visible.

Seasonal patterns of IO repeat in similar form from year to year. Therefore, selected short time periods may be averaged over several subsequent years to improve the signal-to-noise-ratio, and still retain some information on the shorter time scale. As an example, the reoccurrence of IO spatial patterns from year to year is shown in Fig. 3 for the 3-month spring period September to November for all six years 2004 to 2009 individually. In all six years, IO amounts are elevated above the shelf ice regions, around the continent on the sea ice, along coast lines and above parts of the continent. The absolute IO amounts differ from year to year with higher amounts, e.g., in 2006 and lower levels, e.g., in 2009, however, the observed spatial pattern is noticeably similar. The level shift in IO vertical columns between spring 2006 and spring 2009 corresponds to a difference in IO optical depth of below 5×10^{-5} (already taking into account the average AMF of 4). The pattern of enhanced IO is more meaningful than the absolute amounts.

In the following, monthly means of IO are presented which are averaged over the time span of six years. Averaging periods either start at the beginning or the middle of a month. In this manner, a time series is generated as a running average, where each map is shifted by half a month with respect to the previous image with half a month overlap to both sides. Trace gas variations on effectively shorter time scales may be analysed in this way. The same procedure is applied to the BrO data for suitable comparison. For both retrievals, the values used for the final results are subject to a quality criterion. Only those results satisfying a limit on the fit residual are considered,

Simultaneous satellite observations of IO and BrO

A. Schönhardt et al.

Title Page

Abstract

Introduction

Conclusions

References

Tables

Figures

⏪

⏩

◀

▶

Back

Close

Full Screen / Esc

Printer-friendly Version

Interactive Discussion



excluding individual measurements, e.g., with less than usual SNR.

5 Temporal and spatial variation of IO

The maps in Fig. 4 present a time series of IO vertical columns over Antarctica. The averaging procedure described in Sect. 4 is applied. The first map, e.g., contains data covering the time from 15 September to 14 October from the years 2004 to 2009. The following map then runs from beginning to end of October. For the same periods as for IO, the distributions of BrO above the Southern Hemisphere are computed and shown in Fig. 5. The BrO maps are discussed and compared to IO distributions later in the following section.

Regions affected by enhanced IO include the sea ice area, shore lines, the ice shelves, and also parts of the continent. Interestingly, above each of these regions enhanced IO appears in different times of the year. In Antarctic early spring time, in the beginning of the time series, IO is enhanced around the shelf ice areas and above parts of the continent. This can be seen in the first map (September/October). Towards later spring, it can be seen how a distinct structure forms. A circular area of enhanced IO amounts around the Antarctic continent begins to evolve in October/November, is fully developed in November and can still be perceived during December. In the circular area, enhanced IO columns lie around 1×10^{12} molec cm^{-2} to 1.6×10^{12} molec cm^{-2} . The area lies within a part of the ocean still covered by sea ice during this time of year. The sea ice on the ocean is present already during winter and through Antarctic spring time, and slowly starts to break up and melt during spring. The relation between IO appearance and sea ice coverage is discussed below in Sect. 7, where sea ice concentrations are consulted for comparison.

The area exhibiting enhanced IO then decreases during summer (December and January), enhanced amounts are here mainly found at some coastal locations. In January, the IO is found mostly above some shelf ice areas where it remains present also in early autumn. Towards autumn then the IO becomes more variable, the scattering in

Simultaneous satellite observations of IO and BrO

A. Schönhardt et al.

Title Page

Abstract

Introduction

Conclusions

References

Tables

Figures

◀

▶

◀

▶

Back

Close

Full Screen / Esc

Printer-friendly Version

Interactive Discussion



the data is enhanced due to less data points and less sun light (larger SZA) and consequently reduced data quality. The enhanced IO amounts are then more widespread in March. In winter, there are no data from scattered sun light measurements.

Following from the discussion on the temperature dependence of the IO absorption, the slight overestimation of IO columns changes with season, with a stronger influence towards the colder months. From typical temperature differences between Antarctic winter and summer of around $\Delta T \approx 20\text{--}30\text{ K}$ depending on location (Comiso, 2000), a relative difference in retrieved IO amounts of $\leq 10\%$ results (see also Supplement). A deviation of this magnitude will not significantly influence the observed patterns and temporal-spatial variations of the IO columns, but it should be kept in mind.

By averaging the IO columns over the main latitude band of IO enhancements ($\approx 80^\circ\text{ S}$ to 60° S), the IO column amounts may be investigated in dependence of the longitude. In this way, the influence of the Solar Zenith Angle (e.g., by photochemistry or measurement sensitivity) is effectively removed. Longitudinal variations of IO enhancements are then caused only by the regional characteristics of the area. The variation of IO amounts with longitude and with time is depicted in Fig. 6. Months from May to July have too little data at the given latitudes, these times appear as white stripes. In the time from August to April each year, the Weddell Sea area and the Ross Sea are regions with frequently large IO columns. Other regions, e.g. between 80° E and 140° E show generally low IO amounts. Regions with less continent but more sea ice area (0° E to -200° E) show the tendency for larger IO columns. In each year, the shelf ice areas (the Ross Ice Shelf, the Filchner and Ronne Ice Shelves, as well as the smaller Amery Ice Shelf) exhibit enhanced IO columns. In regions with enhanced IO, the absolute IO values vary with time. It becomes visible again that the overall IO spatial and temporal patterns repeat from year to year. Paying attention to the details, however, some variability in this reoccurrence is recognized. Giving some examples, the absolute IO amounts vary somewhat from year to year, the secondary maximum in autumn (around March) is unequally strong each year, and enhanced IO amounts at certain locations, e.g., at the Amery Ice Shelf at 70° E , do not appear at exactly the

**Simultaneous
satellite observations
of IO and BrO**

A. Schönhardt et al.

Title Page

Abstract

Introduction

Conclusions

References

Tables

Figures

◀

▶

◀

▶

Back

Close

Full Screen / Esc

Printer-friendly Version

Interactive Discussion



same time each year. The observed detailed differences are subject to variable local environmental conditions.

6 Comparison of IO and BrO distributions

With respect to reactive halogens and sea ice coverage on the ocean, the circular pattern of enhanced IO in late spring is familiar from observations of BrO. The appearance of widespread BrO in Polar Spring above sea ice covered regions is well known and has been discussed in preceding publications (Richter et al., 1998; Wagner and Platt, 1998; Wagner et al., 2001; Kaleschke et al., 2004; Simpson et al., 2007a).

The distributions of IO, described above, are now compared to those of BrO, shown in Fig. 5 for the same time periods and averaging strategy as for IO. The stratospheric portion of BrO is effectively masked by the choice of the colour scale, emphasizing the tropospheric contribution. It is known that BrO appears above Antarctic sea ice (Wagner and Platt, 1998; Richter et al., 2002; Kaleschke et al., 2004), while the necessary conditions are still under discussion and not fully understood. The collected summary of single BrO appearances in individual areas above the sea ice leads to the characteristic circular pattern around the continent if, e.g., monthly means are considered (Simpson et al., 2007b). Enhanced amounts of BrO are observed from early spring onwards (i.e. August, not shown here), the circular pattern of BrO above the sea ice remains fully developed in September/October and persists for several months through the entire spring period, as visible in Fig. 5. BrO columns slowly decrease and retreat during summer. In December, the amounts above the ice shelves are larger than above the sea ice. In addition, the Antarctic coast lines exhibit pronounced BrO, a feature which remains present throughout summer and autumn and decreases gradually.

Comparing the BrO with the IO distributions described above, there is one general similarity: IO and BrO are both observed in the Antarctic region with highest average amounts in Polar spring time. Some of the affected areas overlap in location and partly in time. Both reactive halogens generally appear on ice shelves, above the sea ice and

Simultaneous satellite observations of IO and BrO

A. Schönhardt et al.

Title Page

Abstract

Introduction

Conclusions

References

Tables

Figures

◀

▶

◀

▶

Back

Close

Full Screen / Esc

Printer-friendly Version

Interactive Discussion



along coast lines.

Apart from that, mainly differences between the two species and their distributions are identified. One prominent difference is the behaviour above the sea ice area. IO is observed above Antarctic sea ice only for a fairly short period in late spring, while BrO exhibits its pronounced maximum there during the entire spring period, starting directly after Polar Sunrise and then decreasing from October onwards.

The IO and BrO distributions differ in two further aspects partly already mentioned in Schönhardt et al. (2008). Enhanced IO amounts are more widespread above the continent than BrO. Best visible in December in Fig. 5, BrO is present above some parts of the continent extending, e.g., inland from the Ross ice shelf (around 180° E) and the Ronne ice shelf (around 50° E). IO is present in large amounts above parts of the continent in October, mainly inland from the Ronne and Ross ice shelves, and nearly up to the South Pole. While IO amounts increase again towards autumn, e.g., enhanced IO is clearly visible in the Weddell Sea area in March, BrO amounts gradually decrease over summer and do not reappear in autumn.

7 Discussion of the observations

Identification of source regions and release pathways is of major importance in the research of reactive halogens. Satellite observations contribute to the clarification process as they offer good overview of trace gas abundances in widespread, even remote regions for long time periods. Species with similar source and sink characteristics would show similar distribution patterns. The fact that IO and BrO both appear in Antarctic Spring above partly overlapping areas (sea ice, coastal regions) may imply some relation or chemical interaction between the two compounds. Long-path DOAS observations above Halley in 2005 had shown in parts a similar temporal behaviour of the local IO and BrO amounts (Saiz-Lopez et al., 2007a), from which a close link between the two compounds at this location might be concluded. However, such similarities are not observed for the temporal and spatial distributions of IO and BrO on

Simultaneous satellite observations of IO and BrO

A. Schönhardt et al.

Title Page

Abstract

Introduction

Conclusions

References

Tables

Figures

◀

▶

◀

▶

Back

Close

Full Screen / Esc

Printer-friendly Version

Interactive Discussion



larger scales. The apparent differences in the distributions argue for individual release mechanisms for gaseous iodine and bromine species in Antarctica. An explanation of sudden BrO release above sea ice by the inorganic bromine explosion mechanism has been established in the past few years (Simpson et al., 2007b; Sander et al., 2006, and references therein). The satellite observations show the different signature of IO and suggest that its release mechanism is of different nature. After a short view on the other regions, the following discussion mainly addresses the sea ice area.

7.1 Halogen oxides on ice shelves and the continent

Both species are observed on the shelf ice areas, and as for neither of the two halogens direct sources on the ice shelf are known, the involvement of transport processes in both cases is likely. For BrO, individual transport processes extending over distances up to several thousand kilometres and lasting for several days are regularly observed, e.g., also in the Arctic (Begoin et al., 2010). Chemical recycling processes enable this persistence although the BrO photolytic life time is much shorter. Enhanced IO extends over the continent even further. This has not been satisfactorily explained yet. Some recycling of IO on the surface and/or aerosol appears to be likely. No ground-based measurements are available to clarify the situation. However, transport and recycling of iodine species involving aerosols and snow may effectively transfer iodine from marine sources inland, similar to the BrO transport processes. The formation of hygroscopic iodine containing acid anhydrides, as a result of IO reactions, which act as condensation nuclei for new particle formation is likely to be an important part of this mechanism. In addition, some stratospheric IO occurrence and the influence of strong UV radiation during the ozone hole season might contribute to the observed total IO column. The determination of the details of the mechanism by which iodine is transported into Antarctica producing IO still requires further investigation.

Simultaneous satellite observations of IO and BrO

A. Schönhardt et al.

Title Page

Abstract

Introduction

Conclusions

References

Tables

Figures

◀

▶

◀

▶

Back

Close

Full Screen / Esc

Printer-friendly Version

Interactive Discussion



7.2 Chlorophyll-*a* concentrations around Antarctica

It has been argued before, that iodine species are probably of biological origin (Alicke et al., 1999). Biogenic iodine release by certain types of macroalgae/phytoplankton has been observed and cold water diatoms produce organic iodine species. Carpenter et al. (2007) have measured organic iodine species in the water columns as well as above the water in the gas phase, and have found substantial amounts of, e.g. CH₂I₂, in their case for Antarctic summer. Thus, evidence is provided by point measurements, that iodine species are connected to the surrounding biological activity.

The high biological productivity of Antarctic waters is seen in Fig. 7, showing the chlorophyll-*a* concentration measured by NASA's SeaWiFS (Sea-viewing Wide Field-of-view Sensor) and MODIS (Moderate Resolution Imaging Spectroradiometer) instruments which is an average composite for the years 2004 to 2009. High chlorophyll-*a* concentration indicates strong biological activity. Chlorophyll-*a* concentrations are particularly high close to the Antarctic continent, especially in the waters close to the shelf ice areas, i.e. in the Weddell Sea, the Ross sea and seawards of the Amery ice shelf. In these areas, Chlorophyll-*a* is positively linked to IO occurrence (cp. Fig. 1). Globally however, high chlorophyll-*a* concentrations do not necessarily simply correlate with high IO, so chlorophyll-*a* may be seen as an indication for IO appearance but not as a proxy.

7.3 Sea ice cover

Compared to the BrO appearance above the Antarctic sea ice, IO abundance evolves comparably late and is temporally restricted mainly to November and December (cp. Figs. 4 and 5). This is one of the most interesting differences between the two compounds. After BrO is generated at Polar Sunrise, it takes nearly three more months until IO is observed in this area in a similar circular pattern. The appearance of IO above the sea ice is only of short duration of around two months.

Simultaneous satellite observations of IO and BrO

A. Schönhardt et al.

Title Page

Abstract

Introduction

Conclusions

References

Tables

Figures

◀

▶

◀

▶

Back

Close

Full Screen / Esc

Printer-friendly Version

Interactive Discussion



Simultaneous satellite observations of IO and BrO

A. Schönhardt et al.

Title Page

Abstract

Introduction

Conclusions

References

Tables

Figures



Back

Close

Full Screen / Esc

Printer-friendly Version

Interactive Discussion



With the largest extension of the sea ice cover being present in September (Thomas et al., 2003), the sea ice begins to melt and retreat in the weeks after. During the melting period, not only the total sea ice cover decreases, but more and larger open leads develop, and in addition the still existing sea ice becomes more porous and permeable. Ice algae in Antarctica live and feed from underneath the sea ice (Thomas et al., 2003), and contact with the troposphere above is facilitated in later spring when the ice cover weakens but still offers its habitat to the algae and phytoplankton. In addition to the potential release of iodine from closed sea ice surfaces, for which ideas were developed by Saiz-Lopez and Boxe (2008), the melting and breaking open of sea ice and its increase in temperature and porousness may play an important role.

In order to relate the IO appearance to sea ice cover, observations of sea ice concentrations are used. The sea ice is monitored by the AMSR-E instrument (Advanced Microwave Scanning Radiometer for EOS), a passive microwave radiometer onboard the AQUA satellite which belongs to NASA's Earth Observing System (EOS). Sea ice concentration data used for the maps in Fig. 8 are available from the Integrated Climate Data Center (ICDC, http://icdc.zmaw.de/seaiceconcentration_as1_amsre.html?&L=1, KlimaCampus, University of Hamburg). Based on the brightness temperatures measured with the AMSR-E 89 GHz channel, the ice concentration data are a result of the ARTIST Sea Ice (ASI) algorithm (Kaleschke et al., 2001; Spreen et al., 2008). The left map in Fig. 8 shows the average sea ice cover for October, the right map for November, both averaged over the six year period from 2004 to 2009. Regions with 100 % ice cover are shown in white, and for lesser coverage the brightness decreases through gray to black (around 50 % ice) and then to blue for 0 % ice concentration (i.e. open water). Regions without data are marked in pale turquoise. The sea ice extends circularly around the Antarctic continent, and the ice covered area is smaller for November than for October. In addition, the average concentration of sea ice has already reduced between the two months, which can be seen in the larger dark grey areas within the sea ice zone in the November map. Especially around the coast lines, and at some specific areas within the ice cover, the concentration decreases.

**Simultaneous
satellite observations
of IO and BrO**A. Schönhardt et al.

[Title Page](#)[Abstract](#)[Introduction](#)[Conclusions](#)[References](#)[Tables](#)[Figures](#)[⏪](#)[⏩](#)[◀](#)[▶](#)[Back](#)[Close](#)[Full Screen / Esc](#)[Printer-friendly Version](#)[Interactive Discussion](#)

As an example, a closer view on the section between 0° and 10° E shall be taken (box area in Fig. 8). Here, going from October to November, a rise in IO concentrations and a decline in ice concentration is observed (cp. Fig. 4 for IO). Figure 9 shows zonally averaged amounts over the stated section of the ice concentrations in October (blue dotted curve) and November (dark blue dashed curve), as well as the difference between the two time periods in solid light blue. From the latter curve, two regions of ice loss are identified, i.e. one between latitudes -67° and -61° still amid the sea ice circle, and one between latitudes -60° and -53° at the ice edge. The first dip represents melting and breaking up of the sea ice in still sea ice covered regions, while the second dip represents the retreat of the sea ice cover at the border to the open ocean. The red curve shows the difference in IO vertical column amount between November and October in the same section. The largest enhancement of IO is found between latitudes -67° and -58° , covering the area of sea ice decline amid the sea ice and reaching further northwards.

Assuming that the origin of iodine emissions is from ice algae and phytoplankton, the observed specific IO enhancement is dependent on several factors. In regions with a porous ice cover and many open leads, the contact of the algae species in the water with the air above is facilitated, while the surrounding sea ice still preserves their habitat. As a result, emissions in later spring would be more likely than in early spring emerging from underneath a tightly closed ice cover. Above the comparably warm open ocean areas within the sea ice circle, enhanced convection may enable the insertion of gaseous species to the atmosphere.

The emission of iodine containing compounds into the atmosphere in later spring may also be facilitated by the structure and composition of the ice itself. The probability for liquids to pass through sea ice strongly depends on the temperature of the ice, with a strong increase of permeability at a temperature of -5°C (Golden et al., 1998). At temperatures above the threshold, water and brine can move through the sea ice. This may have a direct impact on the living species below the sea ice (nutrient transport) as well as on the upward transport of compounds and their insertion into the atmosphere.

Closer investigation of the sea ice temperature and its relation to iodine release should be performed by dedicated field work in Antarctica.

For the enhanced IO in earlier spring above regions apart from the sea ice, open ocean directly at the coast may play a role. There is no marked IO enhancement at the ice edge, where the absolute sea ice loss is even larger. This may have at least three explanations: firstly the lower sensitivity of the IO observations above the open ocean as compared to ice and snow, secondly the loss of the algae and phytoplankton preferred habitats when the sea ice vanishes, and thirdly the differences in meteorology such as weaker convection.

Finally, a comparison of the satellite maps of IO and ice concentration and the specific view on the selected section at 0° – 10° E support the observation that IO amounts are amplified above sea ice where the ice cover is breaking open and melting, but where the sea ice habitat is still present.

8 Summary and conclusions

Six full years of SCIAMACHY nadir data have been analysed for the trace gas signatures of IO above Antarctica. Monthly periods of vertical column amounts have been computed and averaged over the six years under consideration. The observed IO vertical column is influenced by the considered AMF through the surface reflectance, the aerosol loading and the unknown IO altitude profile. While the AMF variation remains around several percent for scenes with highly reflecting surfaces and low aerosol loadings, stronger variation results over darker surfaces.

The temperature dependence of the IO absorption cross section has been examined to estimate the influence of atmospheric temperatures on observed IO columns. Through application of the 298 K cross section, an up to 20 % overestimation may result for atmospheric temperatures as low as 243 K due to deeper and narrower IO excitation lines at colder temperatures. Combined uncertainties due to the IO AMF and fitting inaccuracies are usually larger than the temperature effect.

Simultaneous satellite observations of IO and BrO

A. Schönhardt et al.

Title Page

Abstract

Introduction

Conclusions

References

Tables

Figures

◀

▶

◀

▶

Back

Close

Full Screen / Esc

Printer-friendly Version

Interactive Discussion



Strong variations of IO abundances in time and space have been identified above Antarctica. In the detailed temporal resolution, a distinct feature of IO appearance has been discovered. In late spring time, around November and December, a cloud of pronounced IO above the Antarctic sea ice region is regularly observed.

Comparisons of IO and BrO distributions show, that the monthly evolution of these species is different. Although the distributions partly overlap in time and space, considerable differences in the spatial and temporal patterns are observed. Enhanced BrO is a common feature on Antarctic sea ice during the entire spring period starting from polar sunrise in August and lasting many months, while IO above sea ice appears much later in the year and for a shorter time. The observations support the view, that the release pathways of iodine and bromine precursors are probably distinct in origin.

The presented observations and arguments also support the suggestion, that IO release in Antarctica is of biogenic nature. Observations from the SeaWIFS sensor show that areas of high chlorophyll-*a* concentrations and enhanced IO are in close proximity. Observations of sea ice concentrations from the AMSR-E instrument have been considered, and they illustrate that the sea ice concentration decreases in late spring and more open water areas develop still within the sea ice region, enabling closer contact between species in the water column and the troposphere above. Convection above the warmer water as compared to the surrounding ice and air above may facilitate the input of biogenic iodine species to the troposphere.

For a complete understanding of the ongoing biogeochemical cycling of iodine species in the Antarctic sea ice area, detailed in situ studies need to be performed and coupled with improved spatial and temporal resolution remote sensing measurements in the future. In these studies measurements in the water column are to be directly combined with flux measurements and trace gas observations in the atmosphere above. The satellite observations of IO over several years, presented in this manuscript, provide valuable insight into the distribution of IO and its spatial and temporal variation.

**Simultaneous
satellite observations
of IO and BrO**

A. Schönhardt et al.

Title Page

Abstract

Introduction

Conclusions

References

Tables

Figures

◀

▶

◀

▶

Back

Close

Full Screen / Esc

Printer-friendly Version

Interactive Discussion



Supplementary material related to this article is available online at:
[http://www.atmos-chem-phys-discuss.net/11/33651/2011/
acpd-11-33651-2011-supplement.pdf](http://www.atmos-chem-phys-discuss.net/11/33651/2011/acpd-11-33651-2011-supplement.pdf)

Acknowledgements. This study has been financially supported by ESA through the TIBAGS project within the CESN framework. Further financial support was received from the State and University of Bremen, the German Aerospace (DLR), and the European Union.

ESA and DLR provided the level 1 data from SCIAMACHY. Sea ice concentration data from AMSR-E observations are available from http://icdc.zmaw.de/seaiceconcentration_asi_amsre.html?&L=1. The visualization of Chlorophyll-*a* used in this paper was produced with the Giovanni online data system, developed and maintained by the NASA GES DISC.

References

- Acker, J. G. and Leptoukh, G.: Online analysis enhances use of NASA earth science data, *Eos, Transactions, American Geophysical Union*, 88, 14–17, 2007. 33686
- Alicke, B., Hebestreit, K., Stutz, J., and Platt, U.: Iodine oxide in the marine boundary layer, *Nature*, 572, 397–398, 1999. 33654, 33666
- Allan, B. J., McFiggans, G., Plane, J. M. C., and Coe, H.: Observations of iodine monoxide in the remote marine boundary layer, *J. Geophys. Res.*, 105, 14363–14369, 2000. 33654
- Barrie, L. A., Bottenheim, J. W., Schnell, R. C., Crutzen P. J., and Rasmussen, R. A.: Ozone destruction and photochemical reactions at polar sunrise in the lower Arctic atmosphere, *Nature*, 334, 138–141, 1988. 33653
- Begoin, M., Richter, A., Weber, M., Kaleschke, L., Tian-Kunze, X., Stohl, A., Theys, N., and Burrows, J. P.: Satellite observations of long range transport of a large BrO plume in the Arctic, *Atmos. Chem. Phys.*, 10, 6515–6526, doi:10.5194/acp-10-6515-2010, 2010. 33659, 33665
- Bloss, W. J., Rowley, D. M., Cox, R. A., and Jones, R. L.: Kinetics and products of the IO self-reaction, *J. Phys. Chem. A*, 105, 7840–7854, 2001. 33654, 33657
- Bloss, W. J., Lee, J. D., Johnson, G. P., Sommariva, R., Heard, D. E., Saiz-Lopez, A., McFiggans, G., Coe, H., Flynn, M., Williams, P., Rickard, A. R., and Fleming, Z. L.: Impact of

Simultaneous satellite observations of IO and BrO

A. Schönhardt et al.

Title Page

Abstract

Introduction

Conclusions

References

Tables

Figures



Back

Close

Full Screen / Esc

Printer-friendly Version

Interactive Discussion



**Simultaneous
satellite observations
of IO and BrO**

A. Schönhardt et al.

[Title Page](#)[Abstract](#)[Introduction](#)[Conclusions](#)[References](#)[Tables](#)[Figures](#)[◀](#)[▶](#)[◀](#)[▶](#)[Back](#)[Close](#)[Full Screen / Esc](#)[Printer-friendly Version](#)[Interactive Discussion](#)

halogen monoxide chemistry upon boundary layer OH and HO₂ concentrations at a coastal site, *Geophys. Res. Lett.*, 32, L06814, doi:10.1029/2004GL022084, 2005. 33653

Bogumil, K., Orphal, J., Homann, T., Voigt, S., Spietz, P., Fleischmann, O. C., Vogel, A., Hartmann, M., Bovensmann, H., Frerik, J., and Burrows, J. P.: Measurements of molecular absorption spectra with the SCIAMACHY Pre-Flight Model: instrument characterization and reference data for atmospheric remote-sensing in the 230–2380 nm Region, *J. Photoch. Photobio. A.*, 157, 167–184, 2003. 33679

Bösch, H., Camy-Peyret, C., Chipperfield, M. P., Fitzenberger, R., Harder, H., Platt, U., and Pfeilsticker, K.: Upper limits of stratospheric IO and OIO inferred from center-to-limb-darkening-corrected balloon-borne solar occultation visible spectra: implications for total gaseous iodine and stratospheric ozone, *J. Geophys. Res.*, 108(D15), 4455, doi:10.1029/2002JD003078, 2003. 33654

Bovensmann, H., Burrows, J. P., Buchwitz, M., Frerick, J., Noël, S., Rozanov, V. V., Chance, K. V., and Goede, A. P. H.: SCIAMACHY: mission objectives and measurement modes, *J. Atmos. Sci.*, 56, 127–150, 1999. 33656

Brune, W. H., Anderson, J. G., and Chan, K. R.: In situ observations of BrO over Antarctica: ER-2 aircraft results from 54° S to 72° S latitude, *J. Geophys. Res.*, 94, D14, 16639–16647, 1989. 33654

Burkholder, J. B., Curtius, J., Ravishankara, A. R., and Lovejoy, E. R.: Laboratory studies of the homogeneous nucleation of iodine oxides, *Atmos. Chem. Phys.*, 4, 19–34, doi:10.5194/acp-4-19-2004, 2004. 33653

Burrows, J. P., Hölzle, E., Goede, A. P. H., Visser, H., and Fricke, W.: SCIAMACHY – Scanning Imaging Absorption Spectrometer for Atmospheric Cartography, *Acta Astronaut.*, 35, 445–451, 1995. 33656

Butz, A., Bösch, H., Camy-Peyret, C., Chipperfield, M. P., Dorf, M., Kreygy, S., Kritten, L., Prados-Román, C., Schwärzle, J., and Pfeilsticker, K.: Constraints on inorganic gaseous iodine in the tropical upper troposphere and stratosphere inferred from balloon-borne solar occultation observations, *Atmos. Chem. Phys.*, 9, 7229–7242, doi:10.5194/acp-9-7229-2009, 2009. 33654

Carpenter, L. J.: Iodine in the marine boundary layer, *Chem. Rev.*, 103, 4953–4962, 2003. 33653

Carpenter, L. J., Sturges, W. T., Penkett, S. A., Liss, P. S., Alicke, B., Hebestreit, K., and Platt, U.: Short-lived alkyl iodides and bromides at Mace Head, Ireland: links to biogenic sources and

**Simultaneous
satellite observations
of IO and BrO**

A. Schönhardt et al.

Title Page

Abstract

Introduction

Conclusions

References

Tables

Figures

◀

▶

◀

▶

Back

Close

Full Screen / Esc

Printer-friendly Version

Interactive Discussion



halogen oxide production, *J. Geophys. Res.*, 104, 1679–1689, 1999. 33654

Carpenter, L. J., Wevill, D. J., Palmer, C. J., and Michels, J.: Depth profiles of volatile iodine and bromine-containing halocarbons in coastal Antarctic waters, *Mar. Chem.*, 103, 227–236, 2007. 33666

5 Carroll, M. A., Sanders, R. W., Solomon, S., and Schmeltekopf, A. L.: Visible and near-ultraviolet spectroscopy at McMurdo Station, Antarctica. 6. observations of BrO, *J. Geophys. Res.*, 94, D14, 16633–16638, 1989. 33654

Comiso, J. C.: Variability and trends in Antarctic surface temperatures from in situ and satellite infrared measurements, *J. Climate*, 13, 1674–1696, 2000. 33662

10 Fleischmann, O. C., Hartmann, M., Burrows, J. P., and Orphal, J.: New ultraviolet absorption cross-sections of BrO at atmospheric temperatures measured by a time-windowing Fourier transform spectroscopy, *J. Photoch. Photobio. A.*, 168, 117–132, 2004. 33657, 33679

Frieß, U., Wagner, T., Pundt, I., Pfeilsticker, K., and Platt, U.: Spectroscopic measurements of tropospheric iodine oxide at Neumeyer station, Antarctica, *Geophys. Res. Lett.*, 28(10), 1941, doi:10.1029/2003JD004133, 2001. 33654, 33655

15 Frieß, U., Deutschmann, T., Gilfedder, B. S., Weller, R., and Platt, U.: Iodine monoxide in the Antarctic snowpack, *Atmos. Chem. Phys.*, 10, 2439–2456, doi:10.5194/acp-10-2439-2010, 2010. 33655

20 Giese, B., Laturnus, F., Adams, F. C., and Wiencke, C.: Release of volatile iodinated C1–C4 hydrocarbons by marine macroalgae from various climate zones, *Environ. Sci. Technol.*, 33, 2432–2439, 1999. 33655

Golden, K. M., Ackley, S. F., and Lytle, V. I.: The percolation phase transition in sea ice, *Science*, 282, 2238–2241, doi:10.1126/science.282.5397.2238, 1998. 33668

Gómez Martín, J. C.: Spectroscopic, Kinetic and Mechanistic Studies of Atmospherically Relevant I₂/O₃ Photochemistry, Ph.D. Thesis, University Bremen, 2006.

25 Gómez Martín, J. C., Spietz, P., and Burrows, J. P.: Kinetic and mechanistic studies of the I₂/O₃ photochemistry, *J. Phys. Chem. A.*, 111(2), 306, doi:10.1021/jp061186c, 2007. 33654, 33679

30 Gómez Martín, J. C., Ashworth, S. H., Mahajan, A. S., and Plane, J. C. M.: Photochemistry of OIO: laboratory study and atmospheric implications, *Geophys. Res. Lett.*, 36, L09802, doi:10.1029/2009GL037642, 2009. 33654

Gottwald, M. and Bovensmann, H. (Eds.): *SCIAMACHY – Exploring the Changing Earth's Atmosphere*, ISBN 978-90-481-9895-5, doi:10.1007/978-90-481-9896-2, Springer, Dordrecht

Simultaneous satellite observations of IO and BrO

A. Schönhardt et al.

Title Page

Abstract

Introduction

Conclusions

References

Tables

Figures

◀

▶

◀

▶

Back

Close

Full Screen / Esc

Printer-friendly Version

Interactive Discussion



Heidelberg London New York, 2011. 33656

Gottwald, M., Bovensmann, H., Lichtenberg, G., Noel, S., von Bargaen, A., Slijkhuis, S., Piters, A., Hoogeveen, R., von Savigny, C., Buchwitz, M., Kokhanovsky, A., Richter, A., Rozanov, A., Holzer-Popp, T., Bramstedt, K., Lambert, J.-C., Skupin, J., Wittrock, F., Schrijver, H., and Burrows, J. P. (Eds.): *SCIAMACHY – Monitoring the Changing Earth's atmosphere*, DLR, Institut für Methodik der Fernerkundung (IMF), available online at: http://atmos.caf.dlr.de/projects/scops/sciamachy_book/sciamachy_book_dlr.html, 2006. 33656

Hausmann, M. and Platt, U.: Spectroscopic measurement of bromine oxide and ozone in the high Arctic during Polar Sunrise Experiment 1992, *J. Geophys. Res.*, 99, D12, 25399–25413, 1994. 33653

Himmelmann, S., Orphal, J., Bovensmann, H., Richter, A., Ladstätter-Weißenmayer, A., and Burrows, J. P.: First observation of the OIO molecule by time resolved flash photolysis absorption spectroscopy, *Chem. Phys. Lett.*, 251, 330–334, 1996. 33654

Hönninger, G., Leser, H., Sebastián, O., and Platt, U.: Ground-based measurements of halogen oxides at the Hudson Bay by active longpath DOAS and passive MAX-DOAS, *Geophys. Res. Lett.*, 31, L04111, doi:10.1029/2003GL018982, 2004. 33654

Kaleschke, L., Lüpkes, C., Vihma, T., Haarpaintner, J., Bochart, A., Hartmann, J., and Heygster, G.: SSM/I sea ice remote sensing for mesoscale ocean-atmosphere interaction analysis, *Can. J. Remote Sens.*, 27, 526–537, 2001. 33667

Kaleschke, L., Richter, A., Burrows, J. P., Afe, O., Heygster, G., Notholt, J., Rankin, A. M., Roscoe, H. K., Hollwedel, J., Wagner, T., and Jacobi, H.-W.: Frost flowers on sea ice as a source of sea salt and their influence on tropospheric halogen chemistry, *Geophys. Res. Lett.*, 31, L16114, doi:10.1029/2004GL020655, 2004. 33663

Kreher, K., Johnston, P. V., Wood, S. W., Nardi, B., and Platt, U.: Ground-based measurements of tropospheric and stratospheric BrO at Arrival Heights, Antarctica, *Geophys. Res. Lett.*, 24, 3021–3024, 1997. 33654

Mahajan, A. S., Shaw, M., Oetjen, H., Hornsby, K. E., Carpenter, L. J., Kaleschke, L., Tian-Kunze, X., Lee, J. D., Moller, S. J., Edwards, P., Commane, R., Ingham, T., Heard, D. E., and Plane, J. M. C.: Evidence of reactive iodine chemistry in the Arctic boundary layer, *J. Geophys. Res.*, 115, D20303, doi:10.1029/2009JD013665, 2010. 33654, 33659

McFiggans, G., Coe, H., Burgess, R., Allan, J., Cubison, M., Alfarra, M. R., Saunders, R., Saiz-Lopez, A., Plane, J. M. C., Wevill, D., Carpenter, L., Rickard, A. R., and Monks, P. S.: Direct evidence for coastal iodine particles from *Laminaria macroalgae* – linkage to emis-

**Simultaneous
satellite observations
of IO and BrO**

A. Schönhardt et al.

Title Page

Abstract

Introduction

Conclusions

References

Tables

Figures

◀

▶

◀

▶

Back

Close

Full Screen / Esc

Printer-friendly Version

Interactive Discussion



sions of molecular iodine, *Atmos. Chem. Phys.*, 4, 701–713, doi:10.5194/acp-4-701-2004, 2004. 33653

Miller, H. L., Weaver, A., Sanders, R. W., Arpag, K., and Solomon, S.: Measurements of Arctic sunrise surface ozone depletion events at Kangerlussuaq, Greenland (67° N, 51° W), *Tellus B*, 49, 496–509, 1997. 33654

Moore, R. M., Webb, M., Tokarczyk, R., and Wever, R.: Bromoperoxidase and iodoperoxidase enzymes and production of halogenated methanes in marine diatom cultures, *J. Geophys. Res.*, 101, 20899–20908, 1996. 33655

Oetjen, H.: Measurements of halogen oxides by scattered sunlight differential optical absorption spectroscopy, Ph.D. Thesis, University Bremen, 2009. 33654

O'Dowd, C. D. and Hoffmann, T.: Coastal new particle formation: a review of the current state-of-the-art, *Environ. Chem.*, 2, 245, doi:10.1071/EN05077, 2005. 33653

O'Dowd, C. D., Jimenez, J. L., Bahreini, R., Flagan, R. C., Seinfeld, J. H., Hameri, K., Pirjola, L., Kulmala, M., Jennings, S. G., and Hoffmann, T.: Marine aerosol formation from biogenic iodine emissions, *Nature*, 417, 632–636, 2002. 33653

Pedersén, M., Collén, J., Abrahamsson, K., and Ekdahl, A.: Production of halocarbons by seaweeds: an oxidative stress reaction?, *Sci. Mar.*, 60, 257–263, 1996. 33654

Peters, C., Pechtl, S., Stutz, J., Hebestreit, K., Hönninger, G., Heumann, K. G., Schwarz, A., Winterlik, J., and Platt, U.: Reactive and organic halogen species in three different European coastal environments, *Atmos. Chem. Phys.*, 5, 3357–3375, doi:10.5194/acp-5-3357-2005, 2005. 33654

Platt, U. and von Glasow, R.: Halogens in the troposphere – an international task, *Science and Implementation Plan*, *Geophys. Res. Abstr.*, 7, 07581, White Paper, available online at: www.uea.ac.uk/~fkd06bju/HitT/HitT_WhitePaper.pdf, 2005. 33653

Platt, U. and Hönninger, G.: The role of halogen species in the troposphere, *Chemosphere*, 52, 325–338, 2003. 33653

Platt, U. and Perner, D.: Direct measurements of atmospheric CH₂O, HNO₂, O₃, NO₂, SO₂ by differential optical absorption in the near UV, *J. Geophys. Res.*, 85, C12, 7453–7458, 1980. 33656

Platt, U. and Stutz, J.: *Differential Optical Absorption Spectroscopy – Principles and Applications*, Springer-Verlag, Berlin Heidelberg, ISBN 978-3-540-21193-8, 2008. 33656

Pundt, I., Pommereau, J.-P., Phillips, C., and Lateltin, E.: Upper limits of iodine oxide in the lower stratosphere, *J. Atmos. Chem.*, 30, 173–185, 1998. 33654

**Simultaneous
satellite observations
of IO and BrO**

A. Schönhardt et al.

Title Page

Abstract

Introduction

Conclusions

References

Tables

Figures

◀

▶

◀

▶

Back

Close

Full Screen / Esc

Printer-friendly Version

Interactive Discussion



Read, K. A., Mahajan, A. S., Carpenter, L. J., Evans, M. J., Faria, B. V. E., Heard, D. E., Hopkins, J. R., Lee, J. D., Moller, S. J., Lewis, A. C., Mendes, L., McQuaid, J. B., Oetjen, H., Saiz-Lopez, A., Pilling, M. J., and Plane, J. M. C.: Extensive halogen-mediated ozone destruction over the tropical Atlantic Ocean, *Nature*, 453, 1232–1235, doi:10.1038/nature07035, 2008. 33653

Richter, A., Wittrock, F., Eisinger, M., and Burrows, J. P.: GOME observations of tropospheric BrO in Northern Hemispheric spring and summer 1997, *Geophys. Res. Lett.*, 25, 2683–2686, 1998. 33654, 33659, 33663

Richter, A., Wittrock, F., Ladstätter-Weißenmayer, A., and Burrows, J. P.: GOME measurements of stratospheric and tropospheric BrO, *Adv. Space Res.*, 29, 11, 1667–1672, 2002. 33663

Rozanov, A., Rozanov, V.-V., Buchwitz, M., Kokhanovsky, A., and Burrows, J. P.: SCIATRAN 2.0. A new radiative transfer model for geophysical applications in the 175–2400 nm spectral region, *Adv. Space Res.*, 36, 1015–1019, doi:10.1016/j.asr.2005.03.012, 2005a. 33658

Rozanov, A., Bovensmann, H., Bracher, A., Hrechanyy, S., Rozanov, V., Sinnhuber, M., Strohm, F., and Burrows, J. P.: NO₂ and BrO vertical profile retrieval from SCIAMACHY limb measurements: sensitivity studies, *Adv. Space Res.*, 36, 5, 846–854, 2005b. 33659

Rozanov, V. V., Buchwitz, M., Eichmann, K.-U., de Beek, R., and Burrows, J. P.: Sciatran – a new radiative transfer model for geophysical applications in the 240–2400 nm spectral region: the Pseudo-spherical version, *Adv. Space Res.*, 29, 1831–1835, 2002. 33658, 33679

Saiz-Lopez, A. and Boxe, C. S.: A mechanism for biologically-induced iodine emissions from sea-ice, *Atmos. Chem. Phys. Discuss.*, 8, 2953–2976, doi:10.5194/acpd-8-2953-2008, 2008.

Saiz-Lopez, A., Shillito, J. A., Coe, H., and Plane, J. M. C.: Measurements and modelling of I₂, IO, OIO, BrO and NO₃ in the mid-latitude marine boundary layer, *Atmos. Chem. Phys.*, 6, 1513–1528, doi:10.5194/acp-6-1513-2006, 2006. 33654

Saiz-Lopez, A., Mahajan, A. S., Salmon, R. A., Bauguitte, S. J.-B., Jones, A. E., Roscoe, H. K., and Plane, J. M. C.: Boundary layer halogens in coastal Antarctica, *Science*, 317, 348, doi:10.1126/science.1141408, 2007a. 33654, 33655, 33664

Saiz-Lopez, A., Chance, K., Liu, X., Kurosu, T. P., and Sander, S. P.: First observations of iodine oxide from space, *Geophys. Res. Lett.*, 34, L12812, doi:10.1029/2007GL030111, 2007b. 33655, 33657

Saiz-Lopez, A., Plane, J. M. C., Mahajan, A. S., Anderson, P. S., Bauguitte, S. J.-B., Jones, A. E., Roscoe, H. K., Salmon, R. A., Bloss, W. J., Lee, J. D., and Heard, D. E.:

**Simultaneous
satellite observations
of IO and BrO**

A. Schönhardt et al.

[Title Page](#)[Abstract](#)[Introduction](#)[Conclusions](#)[References](#)[Tables](#)[Figures](#)[◀](#)[▶](#)[◀](#)[▶](#)[Back](#)[Close](#)[Full Screen / Esc](#)[Printer-friendly Version](#)[Interactive Discussion](#)

On the vertical distribution of boundary layer halogens over coastal Antarctica: implications for O_3 , HO_x , NO_x and the Hg lifetime, *Atmos. Chem. Phys.*, 8, 887–900, doi:10.5194/acp-8-887-2008, 2008. 33655, 33659

Sander, R., Burrows, J., and Kaleschke, L.: Carbonate precipitation in brine – a potential trigger for tropospheric ozone depletion events, *Atmos. Chem. Phys.*, 6, 4653–4658, doi:10.5194/acp-6-4653-2006, 2006. 33665

Schönhardt, A., Richter, A., Wittrock, F., Kirk, H., Oetjen, H., Roscoe, H. K., and Burrows, J. P.: Observations of iodine monoxide columns from satellite, *Atmos. Chem. Phys.*, 8, 637–653, doi:10.5194/acp-8-637-2008, 2008. 33655, 33656, 33657, 33660, 33664

Schroeder, W. H., Anlauf, K. G., Barrie, L. A., Lu, J. Y., Steffen, A., Schneeberger, D. R., and Berg, T.: Arctic springtime depletion of mercury, *Nature*, 394, 331–332, 1998. 33653

Simpson, W. R., Carlson, D., Hönninger, G., Douglas, T. A., Sturm, M., Perovich, D., and Platt, U.: First-year sea-ice contact predicts bromine monoxide (BrO) levels at Barrow, Alaska better than potential frost flower contact, *Atmos. Chem. Phys.*, 7, 621–627, doi:10.5194/acp-7-621-2007, 2007a. 33663

Simpson, W. R., von Glasow, R., Riedel, K., Anderson, P., Ariya, P., Bottenheim, J., Burrows, J., Carpenter, L. J., Frieß, U., Goodsite, M. E., Heard, D., Hutterli, M., Jacobi, H.-W., Kaleschke, L., Neff, B., Plane, J., Platt, U., Richter, A., Roscoe, H., Sander, R., Shepson, P., Sodeau, J., Steffen, A., Wagner, T., and Wolff, E.: Halogens and their role in polar boundary-layer ozone depletion, *Atmos. Chem. Phys.*, 7, 4375–4418, doi:10.5194/acp-7-4375-2007, 2007b. 33653, 33663, 33665

Solomon, S., Sanders, R. W., Carroll, M. A., and Schmeltekopf, A. L.: Visible and near-ultraviolet spectroscopy at McMurdo Station, Antarctica. 5. Observations of the diurnal variations of BrO and OCIO, *J. Geophys. Res.*, 94, D9, 11393–11403, 1989. 33654

Solomon, S., Garcia, R. R., and Ravishankara, A. R.: On the role of iodine in ozone depletion, *J. Geophys. Res.*, 99, 20491–20499, 1994. 33653

Spreen, G., Kaleschke, L., and Heygster, G.: Sea ice remote sensing using AMSR-E 89 GHz channels, *J. Geophys. Res.*, 113, C02S03, doi:10.1029/2005JC00338, 2008. 33667

Steffen, A., Douglas, T., Amyot, M., Ariya, P., Aspmo, K., Berg, T., Bottenheim, J., Brooks, S., Cobbett, F., Dastoor, A., Dommergue, A., Ebinghaus, R., Ferrari, C., Gardfeldt, K., Goodsite, M. E., Lean, D., Poulain, A. J., Scherz, C., Skov, H., Sommar, J., and Temme, C.: A synthesis of atmospheric mercury depletion event chemistry in the atmosphere and snow, *Atmos. Chem. Phys.*, 8, 1445–1482, doi:10.5194/acp-8-1445-2008, 2008. 33653

**Simultaneous
satellite observations
of IO and BrO**

A. Schönhardt et al.

Title Page

Abstract

Introduction

Conclusions

References

Tables

Figures

◀

▶

◀

▶

Back

Close

Full Screen / Esc

Printer-friendly Version

Interactive Discussion



- Theys, N., Van Roozendael, M., Hendrick, F., Yang, X., De Smedt, I., Richter, A., Begoin, M., Errera, Q., Johnston, P. V., Kreher, K., and De Mazière, M.: Global observations of tropospheric BrO columns using GOME-2 satellite data, *Atmos. Chem. Phys.*, 11, 1791–1811, doi:10.5194/acp-11-1791-2011, 2011. 33659
- 5 Thomas, D. N. and Diekmann, G. S. (Eds.): *Sea Ice: An introduction to its physics, chemistry, biology and geology*, Blackwell Publishing Company, Oxford, UK, 2003. 33667
- Tokarczyk, R. and Moore, R. M.: Production of volatile organohalogens by phytoplankton cultures, *Geophys. Res. Lett.*, 21, 4, 285–288, 1994. 33655
- Vogt, R., Sander, R., von Glasow, R., and Crutzen, P. J.: Iodine chemistry and its role in halogen activation and ozone loss in the marine boundary layer: a model study., *J. Atmos. Chem.*, 32, 375–395, 1999. 33653
- 10 Vountas, M., Rozanov, V. V., and Burrows, J. P.: Ring effect: impact of rotational Raman scattering on radiative transfer in Earth's atmosphere, *J. Quant. Spectrosc. Ra.*, 60(6), 943–961, 1998. 33679
- 15 Wada, R., Beames, J. M., and Orr-Ewing, A. J. : Measurement of IO radical concentrations in the marine boundary layer using a cavity ring-down spectrometer, *J. Atmos. Chem.*, 58, 69–87, doi:10.1007/s10874-007-9080-z, 2007. 33654
- Wagner, T. and Platt, U.: Satellite mapping of enhanced BrO concentration in the troposphere, *Nature*, 395, 486–490, 1998. 33654, 33663
- 20 Wagner, T., Leue, C., Wenig, M., Pfeilsticker, K., and Platt, U.: Spatial and temporal distribution of enhanced boundary layer BrO concentrations measured by the GOME instrument aboard ERS-2, *J. Geophys. Res.*, 106, D20, 24225–24235, 2001. 33663
- Whalley, L. K., Furneaux, K. L., Gravestock, T., Atkinson, H. M., Bale, C. S. E., Ingham, T., Bloss, W. J., and Heard, D. E.: Detection of iodine monoxide radicals in the marine boundary layer using laser induced fluorescence spectroscopy, *J. Atmos. Chem.*, 58, 19–39, doi:10.1007/s10874-007-9075-9, 2007. 33654
- 25 Wittrock, F., Eisinger, M., Ladstätter-Weissenmayer, A., Richter, A., and Burrows, J. P.: Ground-based UV/VIS measurements of O₃, NO₂, BrO, and OCIO over Ny-Ålesund (79° N, 12° E), in: *Proc. XVIII Quadrennial Ozone Symposium, L'Aquila, Italy, September 1996, Vol. 2*, 623–626, 1996. 33654
- 30 Wittrock, F., Müller, R., Richter, A., Bovensmann, H., and Burrows, J. P.: Measurements of iodine monoxide (IO) above Spitsbergen, *Geophys. Res. Lett.*, 27, 1471–1474, 2000. 33654

Simultaneous satellite observations of IO and BrO

A. Schönhardt et al.

Table 1. Settings for the DOAS retrieval of IO and BrO in this study. For the trace gases taken into account, the temperatures of the respective cross sections are given in brackets.

Retrieval settings	IO	BrO
Fitting window	416 to 430 nm	336 to 347 nm
Polynomial degree	2 (quadratic)	3 (cubic)
Trace gases	NO ₂ (223 K) (Bogumil et al., 2003) O ₃ (223 K) (Bogumil et al., 2003) IO (298 K) (Gómez Martín et al., 2007)	NO ₂ (223 K) (Bogumil et al., 2003) O ₃ (223 K, 273 K) (Bogumil et al., 2003) BrO (228 K) (Fleischmann et al., 2004)
Other features	Ring effect: SCIATRAN calculation (Rozanov et al., 2002; Vountas et al., 1998) Linear intensity offset correction	

Title Page

Abstract

Introduction

Conclusions

References

Tables

Figures

◀

▶

◀

▶

Back

Close

Full Screen / Esc

Printer-friendly Version

Interactive Discussion



SCIAMACHY IO: 2004-2009

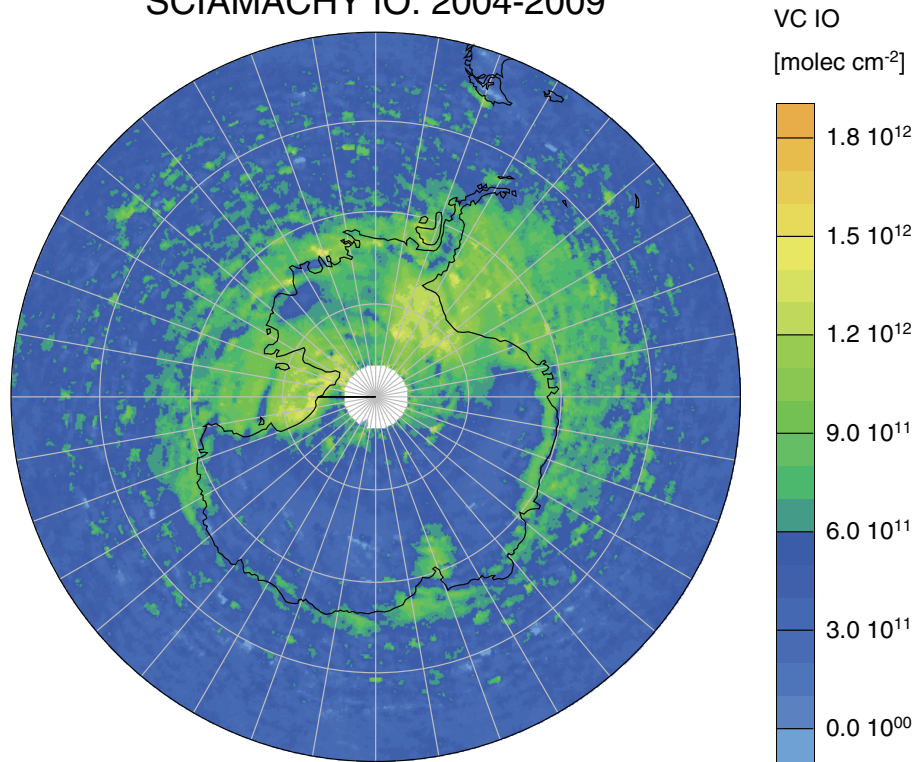


Fig. 1. IO vertical columns above the Antarctic region averaged over the total period of six years, from 2004 to 2009. Different types of areas show enhanced IO amounts – sea ice regions, ice shelves, coast lines, and parts of the continent.

Simultaneous satellite observations of IO and BrO

A. Schönhardt et al.

Title Page

Abstract

Introduction

Conclusions

References

Tables

Figures

◀

▶

◀

▶

Back

Close

Full Screen / Esc

Printer-friendly Version

Interactive Discussion

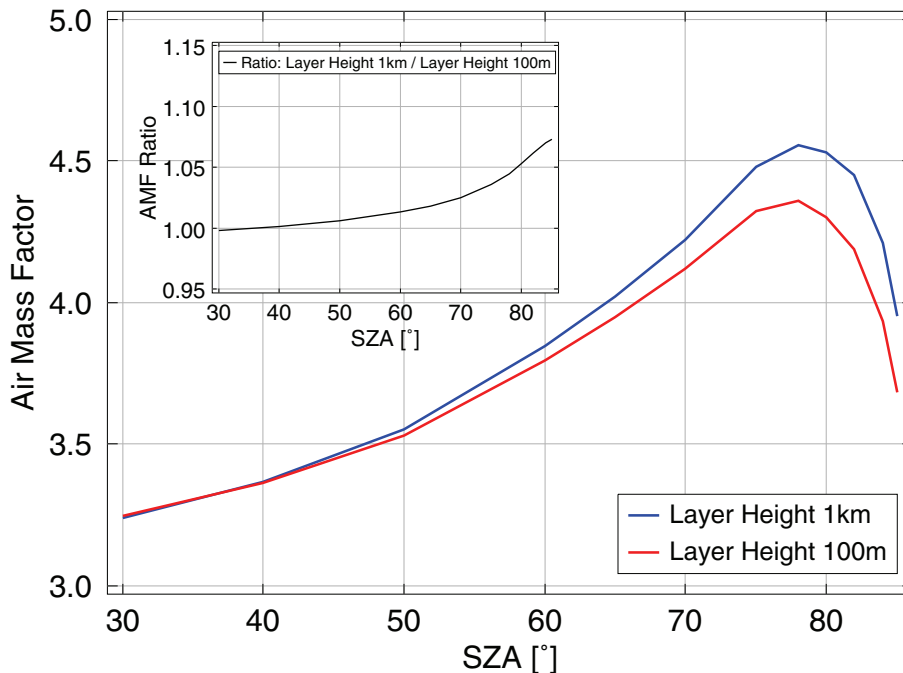


Fig. 2. Calculated AMF for IO using the SCIATRAN radiative transfer code for a Rayleigh atmosphere at 425 nm above a 90 % reflecting surface. Two different layer heights (LH) are compared, with constant VMR in this layer above the surface, LH = 1 km in blue and LH = 100 m in red. The inset shows the ratio of the two AMF calculations, i.e. AMF (LH 1 km) / AMF (LH 100 m). The maximum difference between the two cases lies below 7 %.

Simultaneous satellite observations of IO and BrO

A. Schönhardt et al.

Title Page

Abstract

Introduction

Conclusions

References

Tables

Figures

◀

▶

◀

▶

Back

Close

Full Screen / Esc

Printer-friendly Version

Interactive Discussion



**Simultaneous
satellite observations
of IO and BrO**

A. Schönhardt et al.

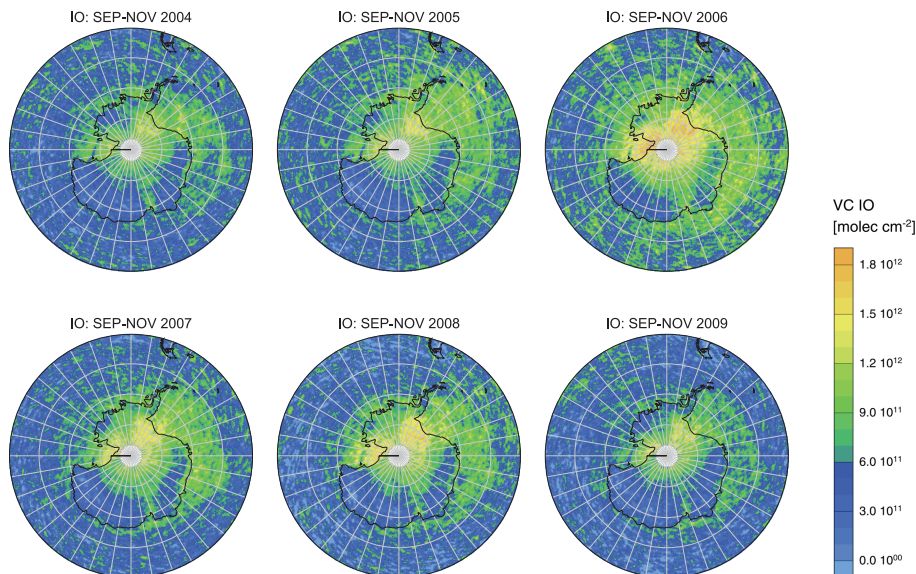


Fig. 3. Spring time averages (September–November) of IO vertical column amounts above the Southern Hemisphere (from 90° S to 50° S) for six individual years from 2004 to 2009.

[Title Page](#)[Abstract](#)[Introduction](#)[Conclusions](#)[References](#)[Tables](#)[Figures](#)[◀](#)[▶](#)[◀](#)[▶](#)[Back](#)[Close](#)[Full Screen / Esc](#)[Printer-friendly Version](#)[Interactive Discussion](#)

**Simultaneous
satellite observations
of IO and BrO**

A. Schönhardt et al.

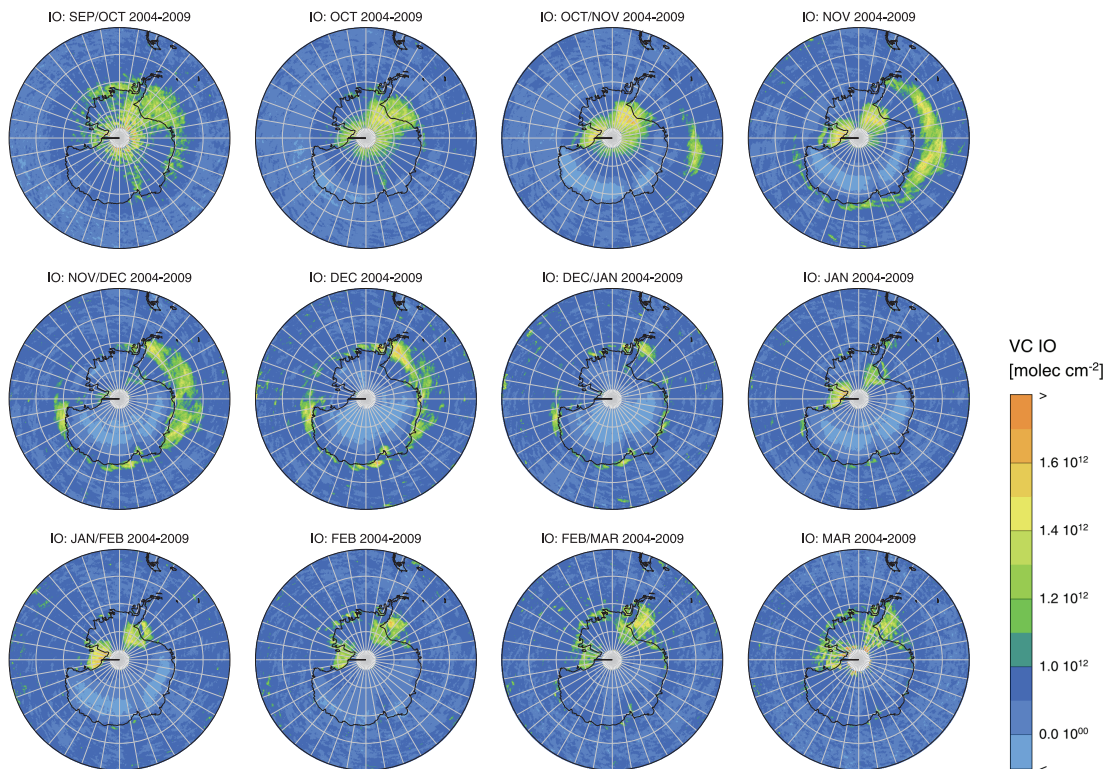


Fig. 4. Monthly maps of IO vertical column amounts on the Southern Hemisphere (up to 50° S) averaged over six subsequent years each (2004–2009), the individual averaging periods are given in the headers.

[Title Page](#)[Abstract](#)[Introduction](#)[Conclusions](#)[References](#)[Tables](#)[Figures](#)[◀](#)[▶](#)[◀](#)[▶](#)[Back](#)[Close](#)[Full Screen / Esc](#)[Printer-friendly Version](#)[Interactive Discussion](#)

**Simultaneous
satellite observations
of IO and BrO**

A. Schönhardt et al.

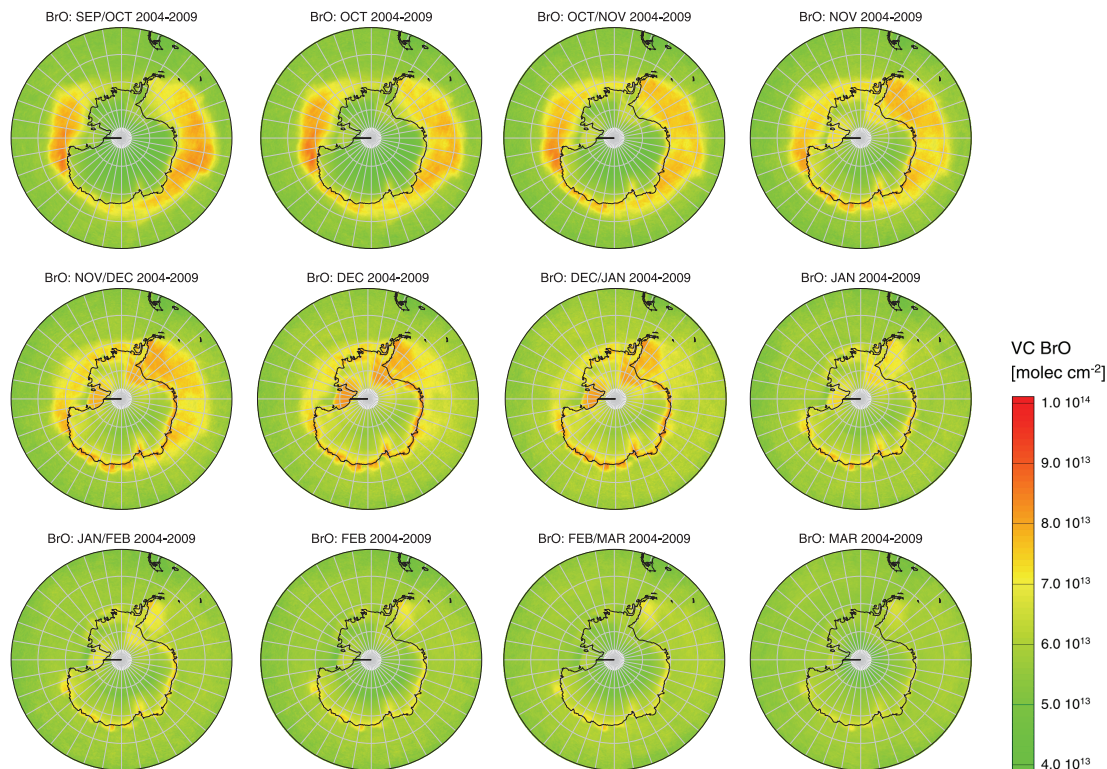


Fig. 5. Monthly maps of BrO vertical column amounts on the Southern Hemisphere (up to 50° S) averaged over six subsequent years each (2004–2009), the individual averaging periods are given in the headers.

[Title Page](#)[Abstract](#)[Introduction](#)[Conclusions](#)[References](#)[Tables](#)[Figures](#)[◀](#)[▶](#)[◀](#)[▶](#)[Back](#)[Close](#)[Full Screen / Esc](#)[Printer-friendly Version](#)[Interactive Discussion](#)

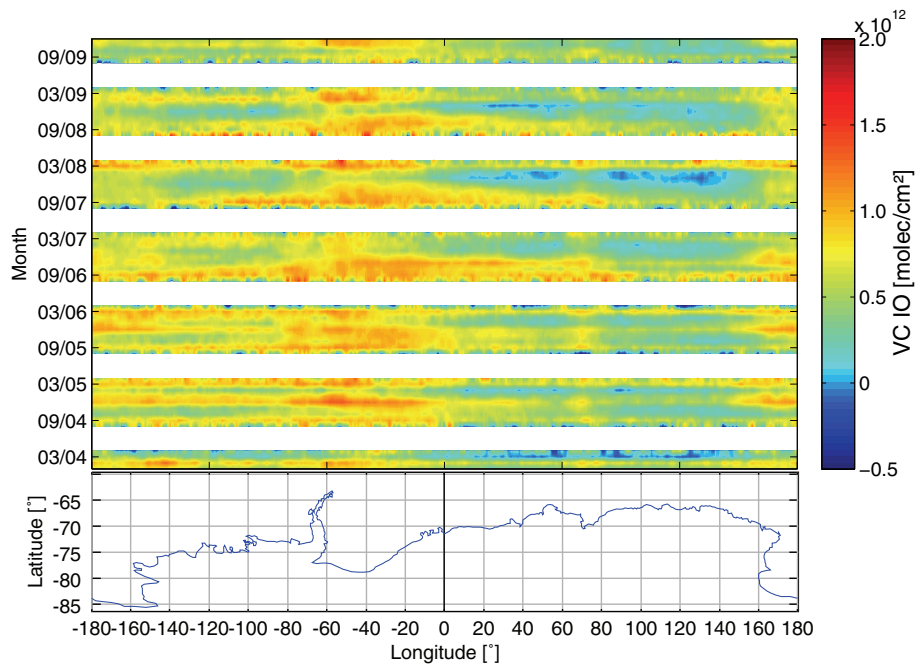


Fig. 6. Contour plot showing the variation of IO average columns with longitude (horizontal axis) and time (vertical axis). IO amounts are averaged within the latitude band 80° S to 60° S. The map below shows the Antarctic coast line.

Simultaneous satellite observations of IO and BrO

A. Schönhardt et al.

Title Page

Abstract Introduction

Conclusions References

Tables Figures

◀ ▶

◀ ▶

Back Close

Full Screen / Esc

Printer-friendly Version

Interactive Discussion



SWFM0CHLO.005 Chlorophyll a concentration climatology [mg/m3] - Jan to Dec

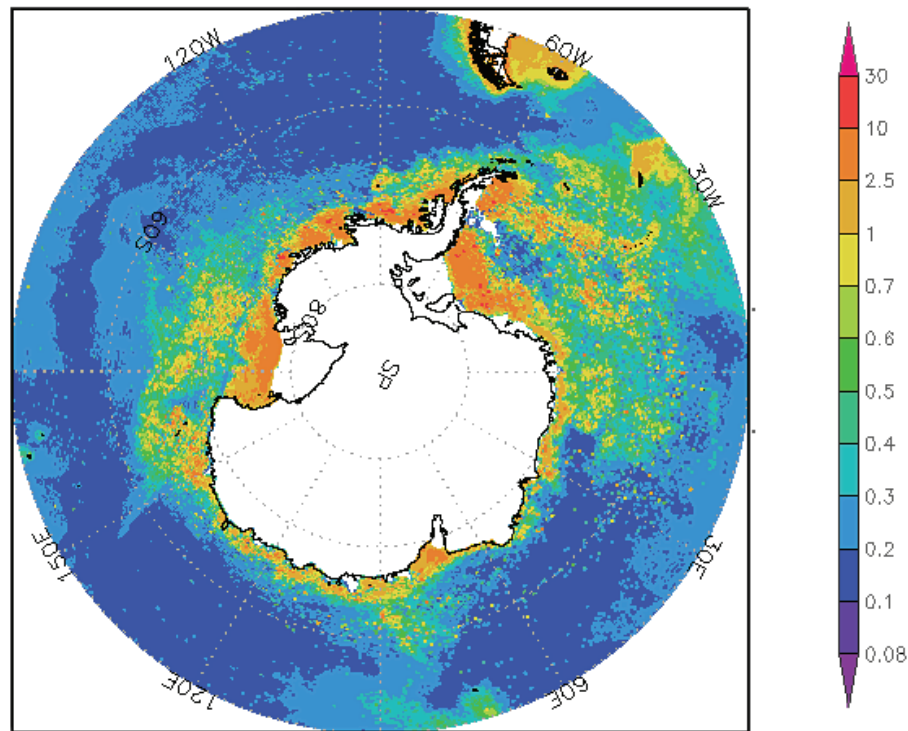


Fig. 7. Map of the Chlorophyll-*a* concentration climatology for the Antarctic region. This visualization has been obtained from the Giovanni online data system (Acker and Leptoukh, 2007) developed and maintained by the NASA GES DISC. Observations are based on data from the SeaWiFS and MODIS instruments.

Simultaneous satellite observations of IO and BrO

A. Schönhardt et al.

Title Page

Abstract

Introduction

Conclusions

References

Tables

Figures

◀

▶

◀

▶

Back

Close

Full Screen / Esc

Printer-friendly Version

Interactive Discussion

**Simultaneous
satellite observations
of IO and BrO**

A. Schönhardt et al.

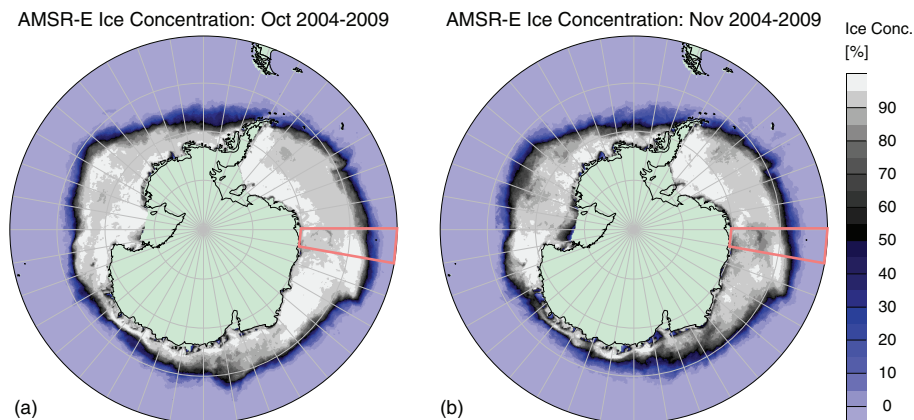


Fig. 8. Maps of the sea ice concentration above Antarctica in October **(a)** and November **(b)**, averaged over the years 2004 to 2009 each, i.e. the same time period as in Figs. 4 and 5. Data of daily sea ice concentrations are available from the Integrated Climate Data Center (ICDC, <http://icdc.zmaw.de>, KlimaCampus, University of Hamburg). The boxes mark an example area with internal ice concentration loss between October to November, which is used for analysis in Fig. 9.

Title Page

Abstract

Introduction

Conclusions

References

Tables

Figures

◀

▶

◀

▶

Back

Close

Full Screen / Esc

Printer-friendly Version

Interactive Discussion



**Simultaneous
satellite observations
of IO and BrO**

A. Schönhardt et al.

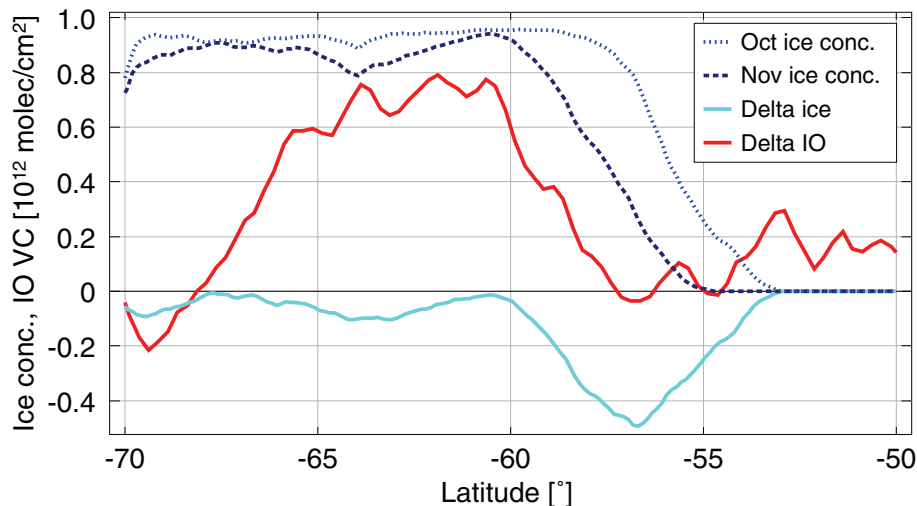


Fig. 9. Comparison of the change in ice cover with the change in IO abundance in the section from 0°–10° E versus latitude (marked area in Fig. 8). Blue dotted and dark blue dashed lines: the average ice concentration for October and November, respectively. The difference between the two curves is shown in solid light blue (November–October). The solid red curve displays the difference of the IO column amount between November and October.

[Title Page](#)[Abstract](#)[Introduction](#)[Conclusions](#)[References](#)[Tables](#)[Figures](#)[◀](#)[▶](#)[◀](#)[▶](#)[Back](#)[Close](#)[Full Screen / Esc](#)[Printer-friendly Version](#)[Interactive Discussion](#)