

Supplementary Data.

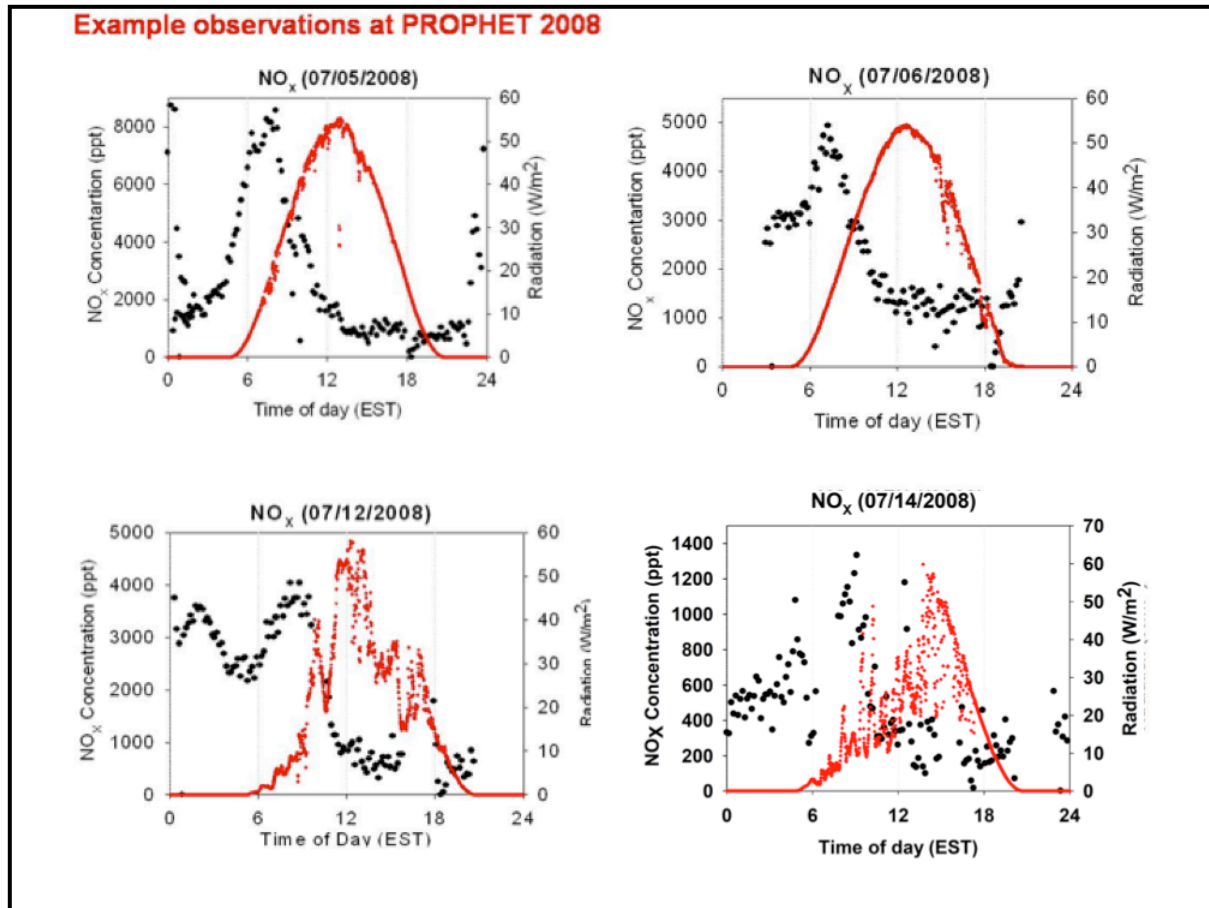


Figure 1S. Example NO_x observations showing morning NO_x maxima at UMBS in 2008.

NOAA HYSPLIT MODEL
 Backward trajectories ending at 1700 UTC 02 Jul 08
 EDAS Meteorological Data

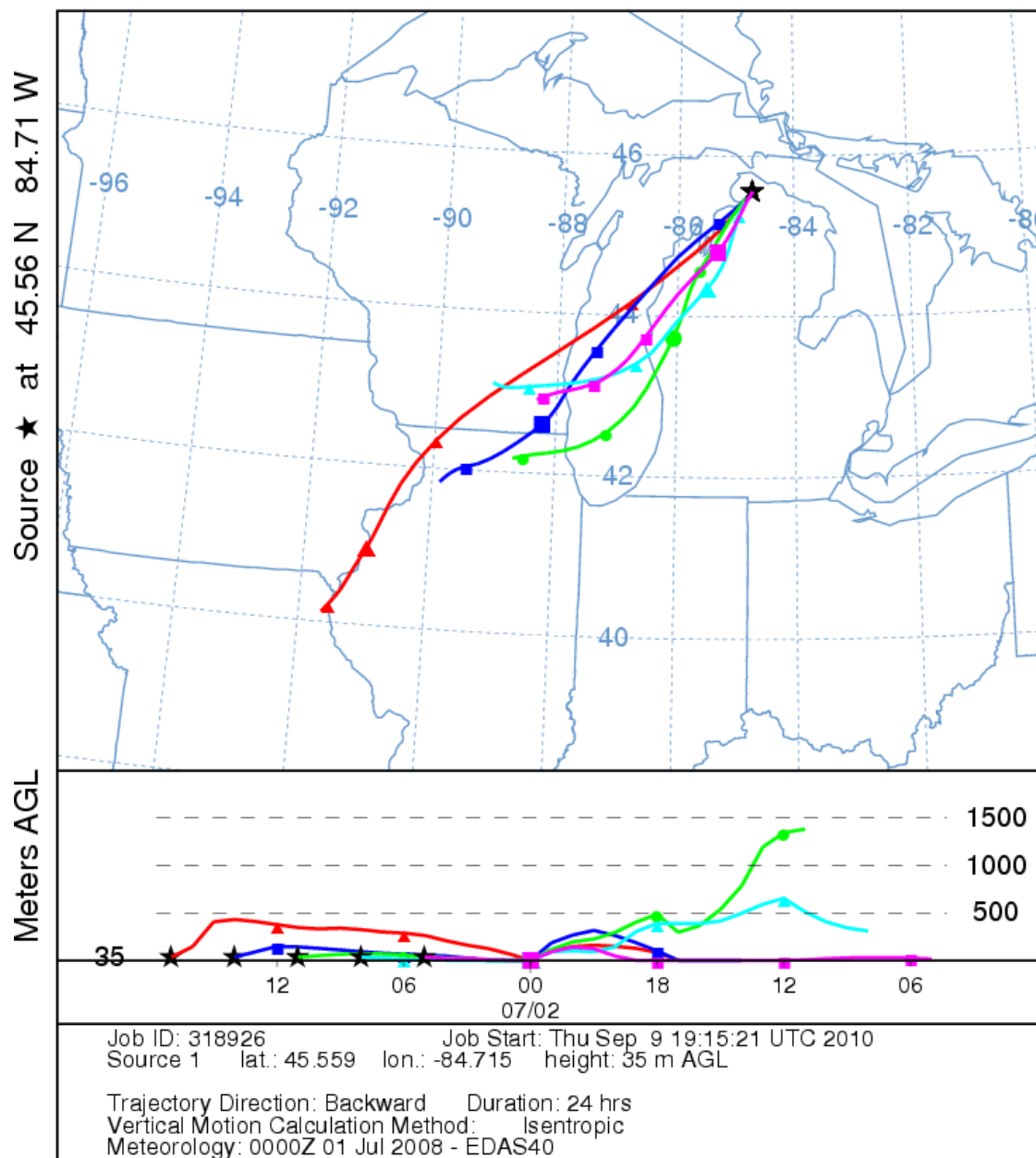


Figure 2S. Back trajectories for July 2, 2008, for Figure 3. The green trace arrived at the site @11:00 UTC or 6 am EST.

NOAA HYSPLIT MODEL
Backward trajectories ending at 1700 UTC 20 Jul 01
EDAS Meteorological Data

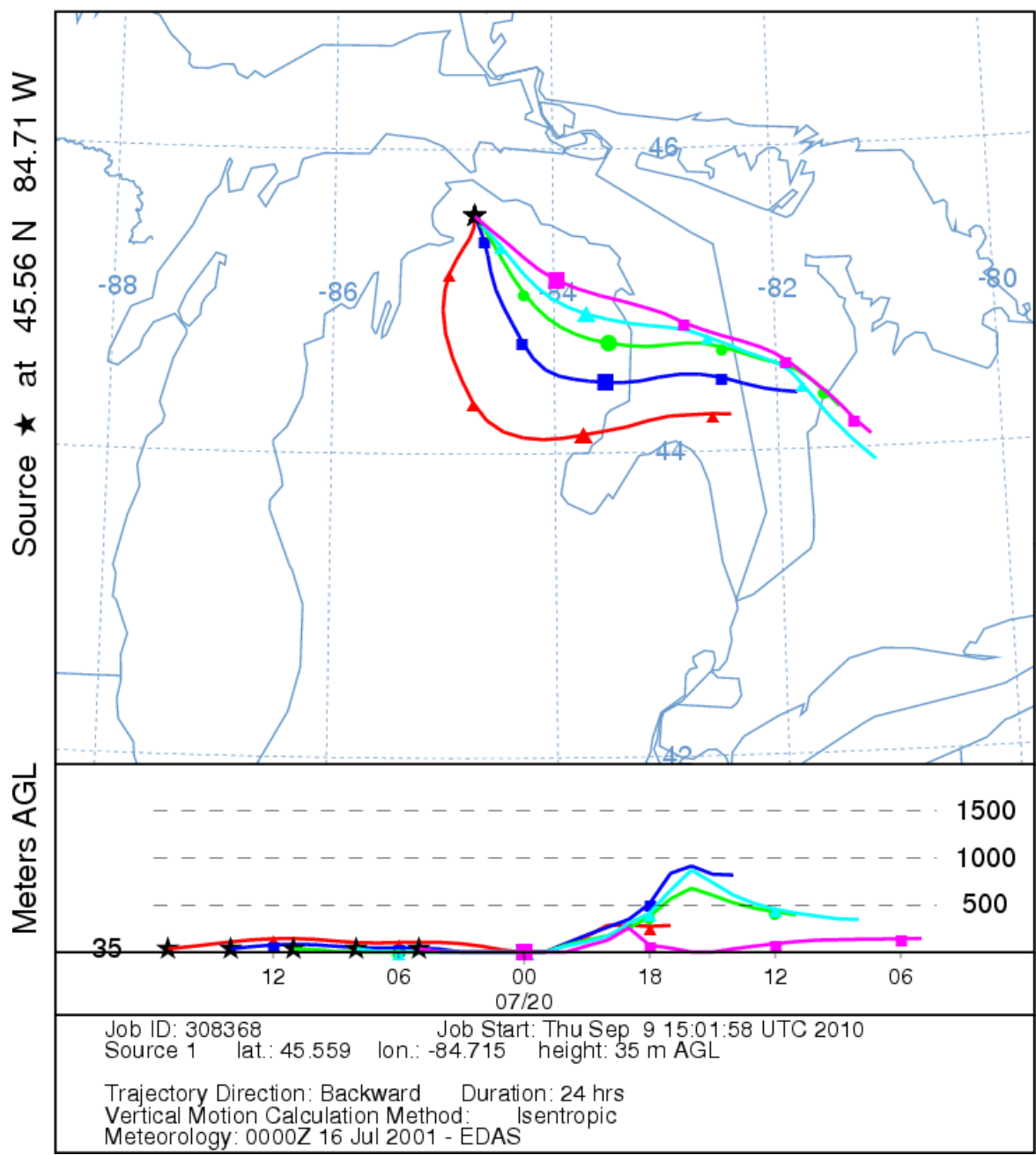


Figure 3S. Back trajectories for July 20, 2001, for Figure 6. The green trace arrived at the site @11:00 UTC or 6 am EST.

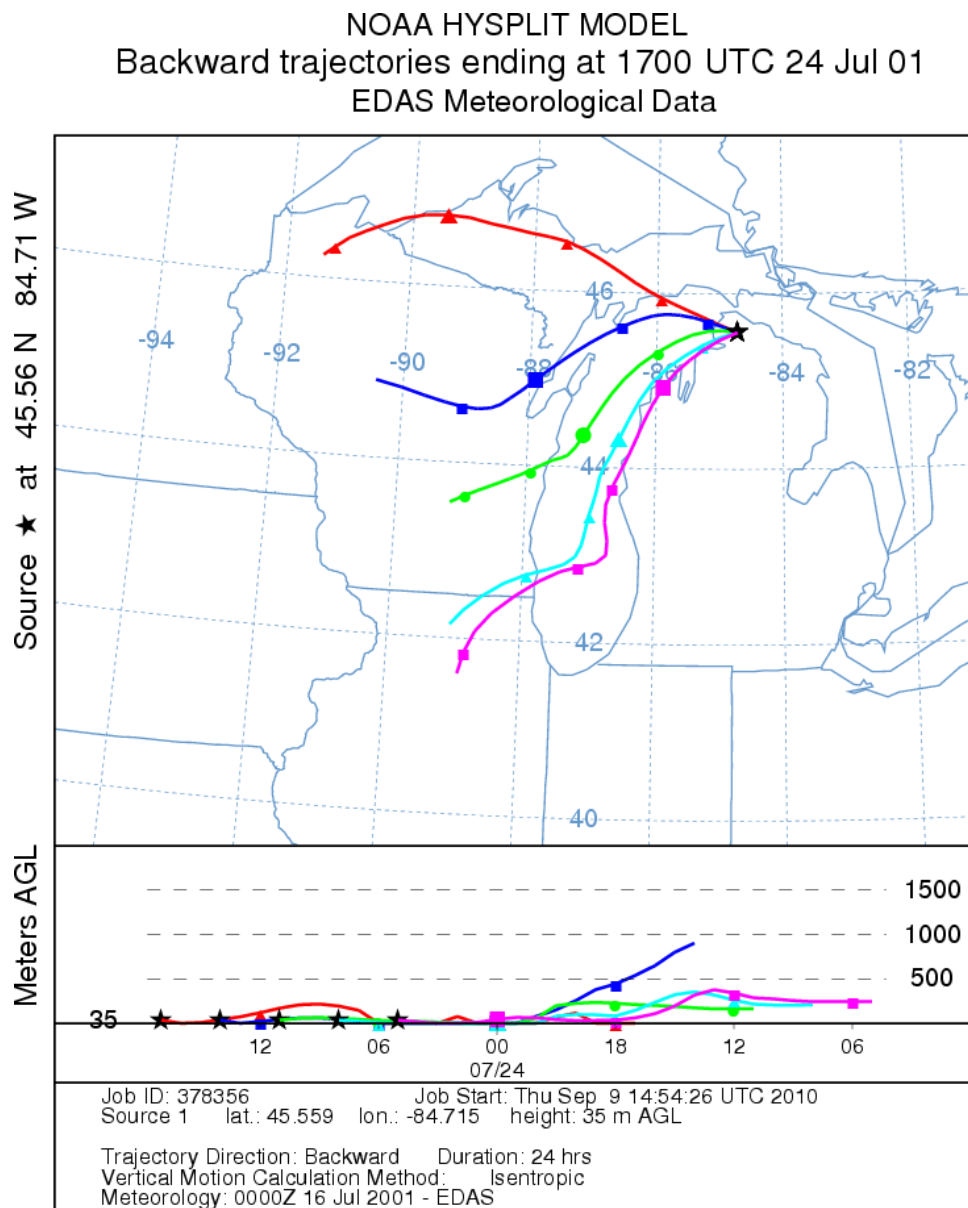


Figure 4S. Back trajectories for July 24, 2001, for Figure 8. The green trace arrived at the site @11:00 UTC or 6 am EST.

NOAA HYSPLIT MODEL
Backward trajectories ending at 1700 UTC 01 Jul 08
EDAS Meteorological Data

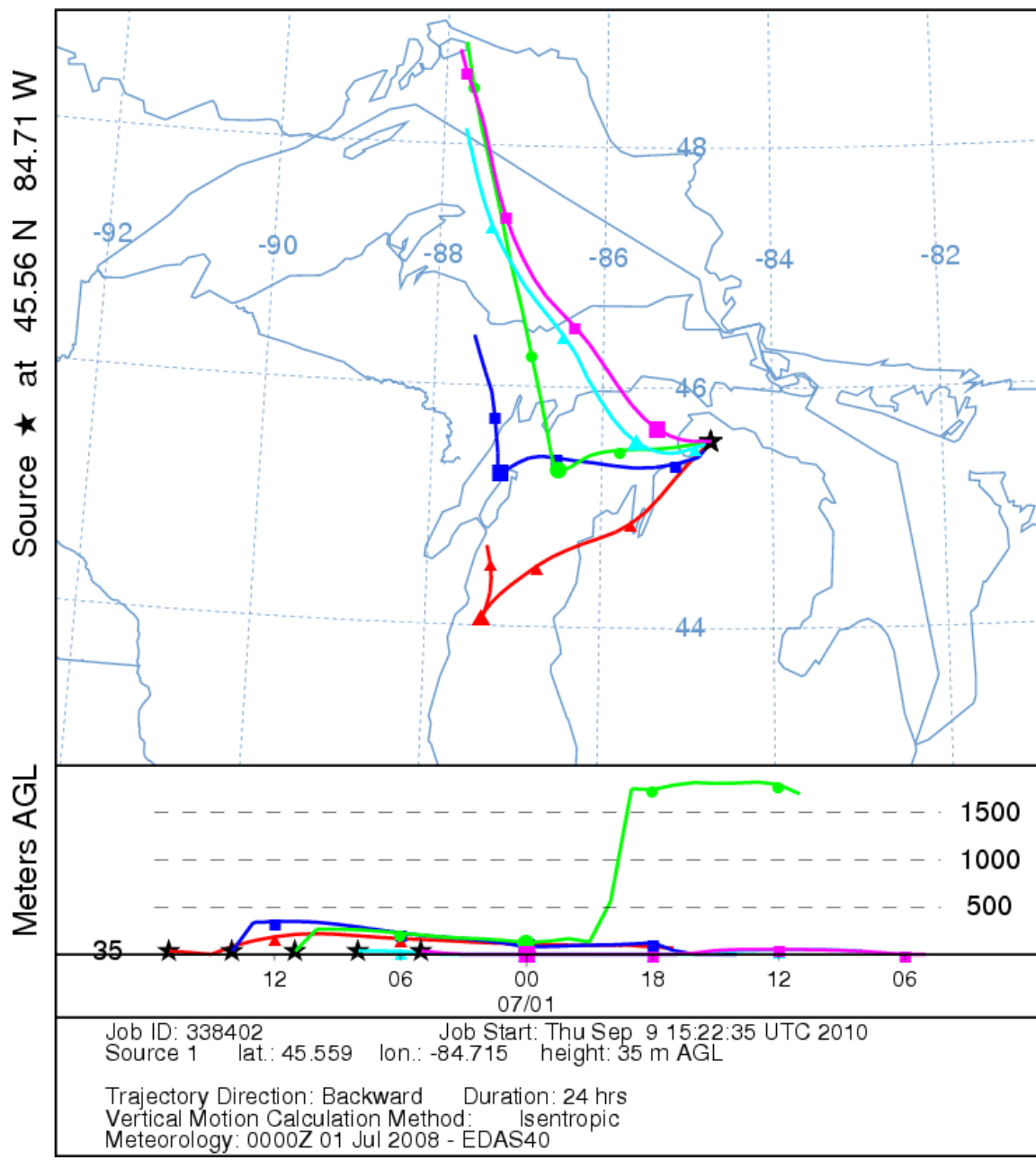


Figure 5S. Back trajectories for July 1, 2008, for Figure 9. The green trace arrived at the site @11:00 UTC or 6 am EST.

NOAA HYSPLIT MODEL
 Backward trajectories ending at 1700 UTC 08 Aug 98
 EDAS Meteorological Data

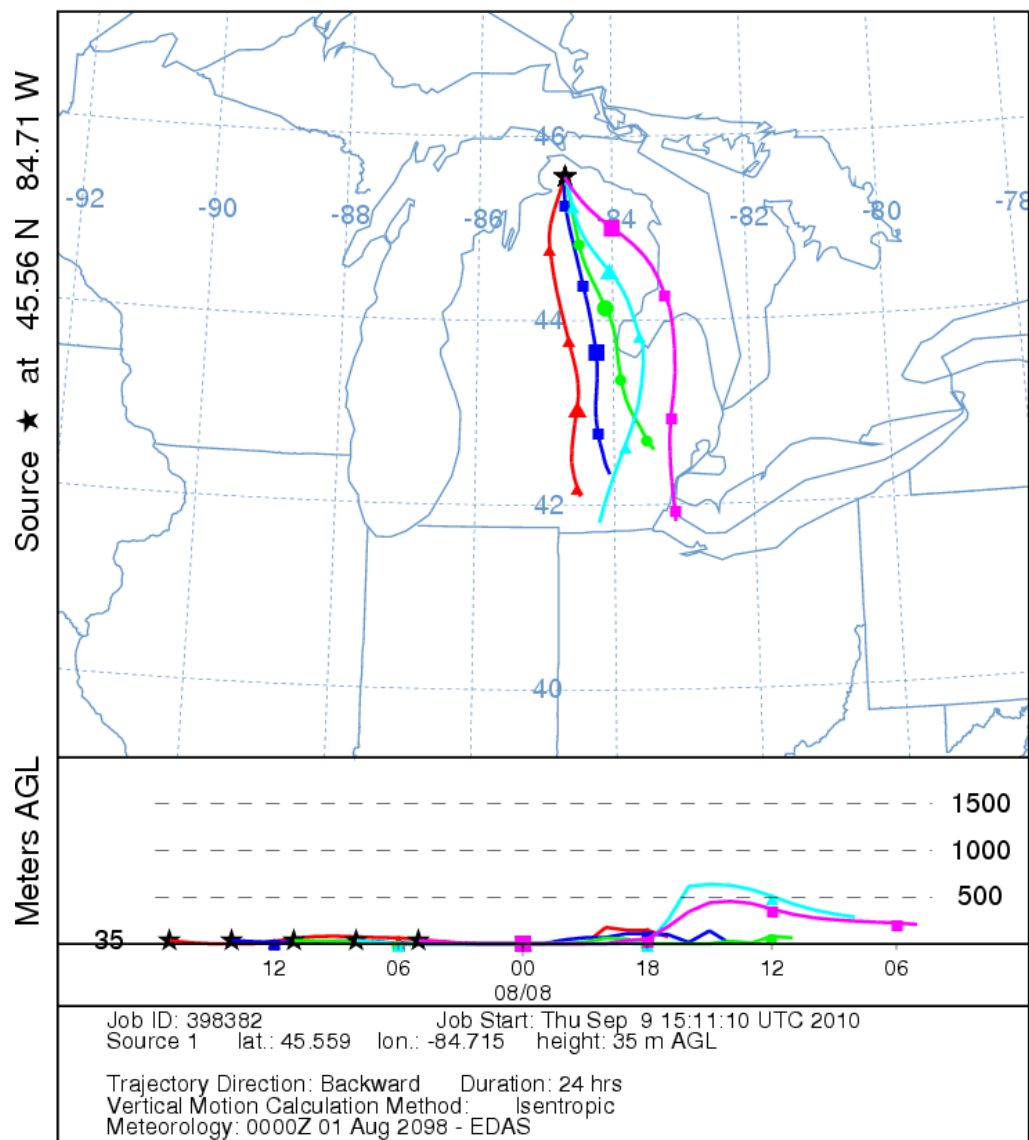


Figure 6S. Back trajectories for August 8, 1998, for Figure 12. The green trace arrived at the site @11:00 UTC or 6 am EST.