

Abstract

An explanatory model study is presented on semi-volatile secondary inorganic aerosols on three clear days in May 2008 during the IMPACT campaign at the Cabauw tower in the Netherlands. A single column model in combination with the equilibrium aerosol model ISORROPIA is used. This model uses surface observations from IMPACT and calculates the gas-aerosol partitioning of ammonium nitrate. The calculated gas-aerosol equilibrium overestimates the gas phase fraction during daytime, and overestimates the aerosol phase fraction during night-time. This discrepancy can partly be solved when the approach of the gas-aerosol equilibrium is forced to proceed with a delay timescale of up to two hours. Although it is shown that the delay itself has a small effect, the most important effect is caused by the mixing of air from higher altitudes at which the equilibrium is shifted to the aerosol phase. Thus, vertical mixing is shown to have a significant influence on the calculated partitioning at the surface. In some occasions, the correspondence to the observed partitioning improves dramatically.

Even though gas-aerosol partitioning of ammonium nitrate is not instantaneous, observations show that a different equilibrium in the upper boundary layer causes aerosol ammonium nitrate concentrations to increase with altitude. Our model calculates similar vertical gradients depending on the assumed speed of gas-aerosol equilibrium. The calculated optical properties of the aerosol show a similar behaviour. The aerosol optical properties depend on the aerosol size distribution both directly, because light scattering depends on particle size, and indirectly, because the equilibration timescale depends on the aerosol sizes. Future studies should therefore focus on a fully size-resolved treatment of the gas-aerosol partitioning.

Finally, coarser-resolution models may treat the gas-aerosol equilibrium of ammonium nitrate by calculating the equilibrium with a temperature and humidity sampled at a different altitude. We found that the equilibrium at an altitude of 200 m (night) up to 600 m (day) is representative for the partitioning of ammonium nitrate at the surface in the beginning of May 2008.

Modelling partitioning NH_4NO_3 in the CBL

J. M. J. Aan de Brugh et al.

Title Page

Abstract

Introduction

Conclusions

References

Tables

Figures



Back

Close

Full Screen / Esc

Printer-friendly Version

Interactive Discussion



1 Introduction

Aerosols have a pronounced influence on the climate system, both directly by scattering and absorbing incoming solar radiation (Hess et al., 1998; Haywood and Boucher, 2000; IPCC, 2007) and indirectly by altering cloud properties (Rosenfeld et al., 2008; Kaufman et al., 2002). The combined climate effect of aerosols is poorly understood compared to the climate effect of greenhouse gases. In the Netherlands, nearly half (42 %–48 %) of the fine aerosol (PM_{2.5}) mass consists of secondary inorganic aerosols (ammonium nitrate and ammonium sulphate) (Weijers et al., 2011), which are the dominant anthropogenic aerosol species in the size range with maximum light scattering (0.4–1.0 μm) (ten Brink et al., 1997). Also, these secondary inorganic aerosols are effective cloud condensation nuclei, because of their size and water solubility. Due to intensive agriculture, the ammonia concentrations in the Netherlands have always been sufficiently high to neutralise sulphuric and nitric acid. During the last twenty-five years, sulphur dioxide emissions have decreased much more than those of nitrogen oxides in Europe and especially in the Netherlands (Vestreng et al., 2007, 2009). Therefore, ammonium nitrate has become increasingly important in comparison to ammonium sulphate. There are two major physical differences between ammonium nitrate and ammonium sulphate. First, the water uptake by ammonium nitrate aerosol depends stronger on the ambient humidity than the water uptake by ammonium sulphate aerosol (Tang, 1996). Hygroscopic growth of aerosols evidently affects the interaction with solar radiation. Second, ammonium nitrate resides in both the gas phase and in the aerosol phase while ammonium sulphate resides exclusively in the aerosol phase. The equilibrium between the gas phase and the aerosol phase depends strongly on temperature and relative humidity. As a result, the interaction of ammonium nitrate with solar radiation is much stronger at lower temperatures and higher relative humidities. With ammonium nitrate becoming increasingly important, systematic investigation of these properties seems appropriate.

Modelling partitioning NH₄NO₃ in the CBL

J. M. J. Aan de Brugh et al.

Title Page

Abstract

Introduction

Conclusions

References

Tables

Figures



Back

Close

Full Screen / Esc

Printer-friendly Version

Interactive Discussion



Modelling partitioning NH_4NO_3 in the CBL

J. M. J. Aan de Brugh et al.

Title Page

Abstract

Introduction

Conclusions

References

Tables

Figures

⏪

⏩

◀

▶

Back

Close

Full Screen / Esc

Printer-friendly Version

Interactive Discussion

Research into ammonium nitrate partitioning is hampered by insufficient data availability. Most continuous measurements at ground-based stations are made with common filter packs and are prone to artefacts due to volatilisation of ammonium nitrate or absorption of nitric acid (Yu et al., 2006; Zhang and McMurry, 1992; Cheng and Tsai, 1997). Continuous measurements of total ammonium ($\text{NH}_3 + \text{NH}_4^+$) and total nitrate ($\text{HNO}_3 + \text{NO}_3^-$) are more widespread and therefore often used for validating large-scale models. Correct separation between aerosol and gas phase is only possible with denuder filter packs (Schaap et al., 2002). For continuous measurements, these labour intensive are hardly used. Therefore, reliable measurements of aerosol ammonium nitrate are often campaign-based like EUCAARI-LONGREX (Kulmala et al., 2009) and the IMPACT-campaign at the Cabauw tower in the Netherlands (Morgan et al., 2010).

Correct representation of the partitioning of semi-volatile species has been a challenge for modellers as well. For partitioning of ammonium nitrate, many large-scale models use equilibrium models such as EQSAM (Metzger et al., 2002a,b) or ISORROPIA (Nenes et al., 1998; Fountoukis and Nenes, 2007). Large-scale models usually assume that the gas-aerosol system is always in equilibrium, which means that the timescale of gas-aerosol partitioning is assumed much shorter than that of other processes such as turbulent mixing of the convective boundary layer (~ 15 min). Several studies, however, have pointed out that generally the gas-aerosol system is not in equilibrium (Wexler and Seinfeld, 1992; Meng and Seinfeld, 1996). Meng and Seinfeld (1996) pointed out that the timescale on which equilibrium is reached depends on the aerosol size and that the equilibrium assumption for coarse mode aerosols is generally not valid. Therefore, some studies use hybrid models, in which instant equilibrium is assumed for the fine fraction and a dynamic model is used for the coarse fractions (Capaldo et al., 2000; Feng and Penner, 2007).

Experimental evaluations of the equilibrium assumption for fine mode ammonium nitrate show contradicting results. A number of studies has shown that the predicted equilibrium is generally in accordance with observations (Zhang et al., 2003; Takahama et al., 2004; Yu et al., 2005). Others have shown that observations show generally

**Modelling
partitioning NH_4NO_3
in the CBL**J. M. J. Aan de Brugh
et al.

Title Page

Abstract

Introduction

Conclusions

References

Tables

Figures



Back

Close

Full Screen / Esc

Printer-friendly Version

Interactive Discussion



larger particulate phase nitrate concentrations than predicted during summer and daytime (Moya et al., 2001; Fisseha et al., 2006; Morino et al., 2006). For the Netherlands, Schaap et al. (2010) compared ISORROPIA calculations with hourly observations of the gas-aerosol partitioning obtained with a MARGA system (Thomas et al., 2009). These authors modelled too abundant aerosol nitrate during the night and at daytime in winter as well as too abundant gaseous nitric acid during the day in summer. They attributed the mismatch to either an incorrectly calculated equilibrium or a non-instantaneous equilibrium.

It has been postulated that the relative abundant nitrate during daytime in summer may partly be due to transport of nitrate richer air from the upper parts of the boundary layer to the ground (Morino et al., 2006). With flight missions in the vicinity of the Cabauw tower (the Netherlands), Morgan et al. (2010) observed that air from the upper boundary layer is indeed richer in aerosol nitrate compared to the surface. Also, they tried to explain the observed scattering coefficients in the upper boundary layer from surface observations in combination with observed humidity-dependence of aerosol light scattering, assuming a well-mixed boundary layer. The observed scattering coefficients in the upper boundary layer were higher than the predictions up to a factor two, which was attributed to enhanced partitioning of semi-volatile gas phase species to the particulate phase in the upper convective boundary layer where lower temperatures and higher relative humidities prevail. In this paper, we test the hypothesis that ammonium and nitrate gas-aerosol partitioning is in non-instantaneous equilibrium and that vertical mixing may explain the mismatch in predicted and observed partitioning.

The main part of this article is a model study on the partitioning of ammonium nitrate. The model is explained in Sect. 2. We will reproduce the results of Schaap et al. (2010) with an ISORROPIA box model in Sect. 3.1. In Sect. 3.2, the column model results are presented. There, we will analyse the partitioning timescale by analysing the gas-aerosol partitioning at the surface, the vertical profiles of aerosol nitrate and the optical properties. Inspired by the model results, some technical analysis is done. In Sect. 3.3, we test the assumptions on which our optical calculations are based (see

also Sect. 2.2.3). In Sect. 3.4, we provide a solution for coarse-resolution models for the issue that one cannot assume instant equilibrium of ammonium nitrate in the convective boundary layer.

2 Materials and methods

5 In this section, we describe the observations and the model used in this study as well as their interaction. Our study is based on observations collected at the Cabauw tower in the Netherlands (51°58.223' N, 4°55.575' E) during the EUCAARI intensive measurement campaign (IMPACT). Our analysis focuses on May 2008, as the fair-weather conditions in this month are easier to simulate and because aircraft data were available. Below, we start with an overview of the meteorological, chemical and physical measurements. Next, the Wageningen University Single Column Model (WUSCM) is introduced.

2.1 Observations

15 The Cabauw Experimental Site for Atmospheric Research (CESAR, <http://www.cesar-observatory.nl>, Russchenberg et al., 2005) provides a host of meteorological data. We use primarily the temperature and the dew point temperature at 2 m. From these quantities, the relative humidity is calculated. Furthermore, a CT75 Ceilometer provides aerosol backscatter profiles and therewith a qualitative indication of the boundary layer height. We will tune our model such that these observations are reproduced. Tuning parameters that influence the meteorology are initial temperature profiles, initial moisture profiles and a radiation tuning parameter that will be explained in Sect. 2.2.1. On clear days, this procedure leads to an excellent representation of the two-metre temperature and relative humidity (see Sect. 3.2.1). Furthermore, our simulated boundary layer height in the afternoon corresponds well with the ceilometer backscatter data.

Modelling partitioning NH_4NO_3 in the CBL

J. M. J. Aan de Brugh et al.

Title Page

Abstract

Introduction

Conclusions

References

Tables

Figures



Back

Close

Full Screen / Esc

Printer-friendly Version

Interactive Discussion



**Modelling
partitioning NH_4NO_3
in the CBL**J. M. J. Aan de Brugh
et al.

Title Page

Abstract

Introduction

Conclusions

References

Tables

Figures

⏪

⏩

◀

▶

Back

Close

Full Screen / Esc

Printer-friendly Version

Interactive Discussion



We used hourly integrated data of both inorganic aerosol composition and the precursor gas concentrations as obtained with a MARGA-instrument (Schaap et al., 2010). MARGA (Monitor for AeRosols and Gases, Applikon Analytical BV) is the commercialised version of the GRAEGOR system (Thomas et al., 2009; ten Brink et al., 2009). Measured were the gases NH_3 and HNO_3 as well as the inorganic PM components NO_3^- , SO_4^{2-} and NH_4^+ . The sampling part of MARGA comprises a wet rotating annular denuder (WAD) for the collection of the precursor gases (Keuken et al., 1988) and subsequently a steam jet aerosol collector (SJAC) for the collection of the particulate matter (Khlystov et al., 1995). The MARGA was located indoor while a Teflon coated PM_{10} (URG) inlet was mounted on the edge of the roof. For a more detailed description of the campaign and the instrument, we refer above-mentioned references. In the model, the surface concentrations of the inert tracers: sulphate, total nitrate ($\text{NO}_3^- + \text{HNO}_3$) and total ammonium ($\text{NH}_4^+ + \text{NH}_3$) were prescribed equal to the time-interpolated observations at Cabauw to avoid implementation of advection, emission and deposition. In this process, the partitioning between gas and aerosol phase is set equal to that of the previous time step in the model. Although this prescription works well, it should be realised that advection, emission or deposition of ammonium or nitrate with a different partitioning can cause biases, because the prescription leaves the partitioning the same. This can influence the results when the timescale of partitioning is large. Finally, the vertical profile can be influenced if advection varies with altitude. In general, the above-described procedure works adequately for a well-mixed boundary layer. Our analysis will therefore focus on the daytime, which is also the most relevant for the radiative effect of aerosols. The observed partitioning of ammonium nitrate is used to evaluate the model.

The aerosol size distribution is measured with a Scanning Mobility Particle Sizer (SMPS) (ten Brink et al., 1983; Wang and Flagan, 1990). The mobility size spectrometer consists of a sequential set-up of an impactor, neutraliser, differential mobility analyser (DMA) and a condensation particle counter (CPC). In the DMA, aerosol particles are classified according to their electrical mobility. The analyser consists of a

Modelling partitioning NH_4NO_3 in the CBL

J. M. J. Aan de Brugh et al.

Title Page

Abstract

Introduction

Conclusions

References

Tables

Figures

⏪

⏩

◀

▶

Back

Close

Full Screen / Esc

Printer-friendly Version

Interactive Discussion



cylinder with a negatively charged rod at the centre. Only aerosols in a narrow range of mobility exit through the output slit, where they enter the CPC, which determines the particle concentration of that size. The size of the particles reaching the output slit is being determined by the control rod voltage and the flow within the DMA. Before entering the DMA, aerosols are brought to a bipolar charge equilibrium using a ^{85}Kr bipolar charger (neutraliser). In charge equilibrium, the fraction of particles with a single elementary charge is known for all sizes (Wiedensohler, 1988). The impactor upstream the DMA removes all particles larger than the upper size limit of the mobility spectrometer and allows for correction of multiple charged particles with same mobility as the singly charged particles that are to be counted. Because the aerosols are in charge equilibrium, the total number of particles can be calculated. The output data of the SMPS is a particles number size distribution as $(\frac{dN}{d\log D})$, where N is the number of aerosols and D is the aerodynamic diameter. The SMPS at Cabauw measures 70 logarithmically equidistant size bins ranging from about 10 nm to 500 nm. The aerosol size distribution is only used for the optical module (see Sect. 2.2.3).

Morgan et al. (2010) present aircraft observations of 8 May and 21 May in the vicinity of Cabauw. Particulate sulphate, nitrate, ammonium and organics were observed during the flights at different altitudes with an on-board aerodyne compact time-of-flight aerosol mass spectrometer (cToF-AMS) (Drewnick et al., 2005; Canagaratna et al., 2007). The AMS measures the fine fraction of the aerosol, with 100 % transmission for aerodynamic diameters of 40–700 nm (DeCarlo et al., 2004). The scattering coefficient is measured with a TSI 3563 nephelometer (Anderson et al., 1996) at wavelengths of 450 nm, 550 nm and 700 nm, of which the value at 550 nm wavelength is used in our analysis. The humidity dependence of the light scattering by the aerosols was obtained by measuring the scattering coefficient of a sample of aerosols at varying relative humidity (RH) values, while keeping all other parameters fixed. The measured RH-dependency was fit with the following formula which is referred to as $f(\text{RH})$ (Morgan et al., 2010).

$$\sigma = \sigma_{\text{dry}}(1 + a\text{RH}^b) \quad (1)$$

Here, RH is the relative humidity (0–1), σ is the scattering cross section and σ_{dry} is the scattering cross section at dehydrated conditions (RH < 40 %). The parameters a and b were determined to fit the observations. The values of a and b may depend on aerosol composition and aerosol size distribution, but they should not directly depend on temperature. The $f(\text{RH})$ is measured multiple times during a flight. As a result, the values for a and b represent the average situation during the whole flight.

2.2 The model

The Wageningen University Single Column Model (WUSCM) simulates boundary layer meteorology (radiation, land-atmosphere interaction and mixing) and can support chemistry schemes. For this study, we adopted a simple chemistry scheme that only involves gas-aerosol partitioning. Only seven tracers are taken into account: ammonia (NH_3), ammonium (NH_4^+), nitric acid (HNO_3), nitrate (NO_3^-), sulphate (SO_4^{2-}), bisulphate (HSO_4^-) and aerosol water (H_2O). The optical module is not coupled directly to the WUSCM model. This module calculates the scattering coefficient from the model output, without feeding back to the model. For simplicity, this study does not employ a size-resolved aerosols scheme. Sizes of aerosols are only used for optical calculations, for which we use the observed aerosol size distribution (see Sects. 2.1 and 2.2.3).

The model has a resolution of 200 levels with equal pressure intervals of 150 Pa, ranging from the surface to about three kilometres altitude. No upper boundary condition is applied. In all our cases, the top of the domain (~ 3 km) is far above the boundary layer, so the upper boundary condition does not directly influence our study area (the boundary layer) on the timescale of one day. The surface boundary condition is determined by observations as explained in Sect. 2.1. We use a model spin-up of one day. The model integrates with a third order Runge-Kutta system, which means that tendencies for the individual processes (e.g. diffusion and chemistry) are evaluated and added. The overall time step is 20 s.

Modelling partitioning NH_4NO_3 in the CBL

J. M. J. Aan de Brugh et al.

Title Page

Abstract

Introduction

Conclusions

References

Tables

Figures

⏪

⏩

◀

▶

Back

Close

Full Screen / Esc

Printer-friendly Version

Interactive Discussion



2.2.1 Meteorological module

The radiation scheme is based on the Tropospheric Ultraviolet and Visible radiation model (TUV) (Madronich, 1987). With TUV, we calculated the incoming short-wave radiation as function of zenith angle. We apply this radiation with a tuning parameter that accounts for the optical depth of the atmosphere (e.g. clouds). The calculated aerosol light scattering does not feed back on the incoming short-wave radiation.

Evaporation is parameterised by calculating the crop resistance, which depends on e.g. leaf area index. This resistance is corrected for short-wave radiation (Jarvis, 1976). The soil temperature, which is important for the long-wave radiation budget, is also calculated by the model's surface scheme.

Boundary layer diffusion is simulated with the Medium-Range Forecast (MRF) scheme following Troen and Mahrt (1986) and Hong and Pan (1996). It includes non-local momentum fluxes according to Noh et al. (2003). The local diffusivities are calculated with the local Richardson numbers and the counter-gradient fluxes are calculated with a constant for excess temperature.

2.2.2 Chemical module

Our model employs ISORROPIA version 2 (Fountoukis and Nenes, 2007) to calculate the gas-aerosol equilibrium. ISORROPIA calculates the fraction of aerosol phase ammonium and nitrate at equilibrium given the total ammonium ($\text{NH}_3 + \text{NH}_4^+$) concentration, the total nitrate ($\text{HNO}_3 + \text{NO}_3^-$) concentration, the sulphate concentration, the temperature and the relative humidity. ISORROPIA also calculates the water content of the aerosols at equilibrium. ISORROPIA uses a bulk aerosol approach, so no aerosol size distribution is taken into account to calculate the gas-aerosol equilibrium. To mimic the fact that equilibrium is not reached instantaneously, we introduce a parameter, τ_p to set the speed at which the equilibrium is reached. The tendency given by ISORROPIA to the model is

Modelling partitioning NH_4NO_3 in the CBL

J. M. J. Aan de Brugh et al.

Title Page

Abstract

Introduction

Conclusions

References

Tables

Figures

⏪

⏩

◀

▶

Back

Close

Full Screen / Esc

Printer-friendly Version

Interactive Discussion



$$\frac{dC}{dt} = \frac{C_{\text{eq}} - C}{\tau_p} \quad (2)$$

Here, C is the concentration vector of all tracers, and C_{eq} is the equilibrium calculated by ISORROPIA. The parameter τ_p will be used as a tuning parameter that we will vary to improve the correspondence to observations. If we want to assume instant equilibrium, we use $\tau_p = 20$ s, equal to the general time step to keep the model numerically stable.

In reality, aerosols may exhibit a phase hysteresis (Wang et al., 2008). Depending on the history of the relative humidity, aerosols may be in a metastable (supersaturated) state or in a solid state coated with saturated liquid material. In our study area (the Netherlands), the humidity is generally high, so we assume that our aerosols remain at the humid, metastable side of the hysteresis.

2.2.3 Optical module

We model the light scattering by the aerosols with a Mie-scattering module (O. Boucher, personal communication, 2004). This code calculates the scattering cross section of aerosols with a certain size ($x = \frac{2\pi r}{\lambda}$) and complex refractive index (m). We apply the Mie-calculation for 70 size bins with SMPS measurements as input.

The SMPS instrument measures the aerosol size distribution as a differential aerosol count in an aerodynamic diameter range ($\frac{dN}{d\log D_a}$). The optical calculations require the number concentrations ($\frac{N}{V}$) per size bin. For the optical calculations, it is very important that the aerosol number concentration and size distribution are consistent with the total aerosol mass. Without calibration, the observed aerosol number concentration is not consistent with the modelled aerosol mass. For example, the model neglects organic aerosol mass, while organic aerosols are counted by the SMPS. Also, the model assumes spherical aerosols with volume equal to $\frac{\pi}{6} D_a^3$. In reality, the mass of an aerosol with aerodynamic diameter D_a may be different. Therefore, the SMPS

Modelling partitioning NH_4NO_3 in the CBL

J. M. J. Aan de Brugh et al.

Title Page

Abstract

Introduction

Conclusions

References

Tables

Figures

◀

▶

◀

▶

Back

Close

Full Screen / Esc

Printer-friendly Version

Interactive Discussion



output has to be calibrated to match with the model assumptions. Thus a normalisation constant is required for the conversion.

$$\frac{N}{V} \equiv S \frac{dN}{d \log D} \quad (3)$$

This normalisation constant S scales the measured $\frac{dN}{d \log D}$ to reproduce $\frac{N}{V}$ for all size bins in such a way that it fits with the modelled aerosol material. It is obtained by setting up an equation for the total aerosol volume per cubic metre air. On the left hand side, we calculate the total aerosol volume by adding up the volume (mass divided by density) of the aerosol components. On the right hand side, we add up the aerosol numbers and calculate their volumes assuming a spherical shape.

$$\sum_j \frac{C_{j,\text{surf}}}{\rho_j} = \frac{\pi}{6} S \sum_i \left(\frac{dN}{d \log D} \right)_i D_{i,\text{SMPS}}^3 \quad (4)$$

On the left hand side, j is an aerosol component (ammonium nitrate and ammonium sulphate), ρ_j is the density of component j and $C_{j,\text{surf}}$ is the modelled mass concentration of component j at the surface. On the right hand side, i is a size bin, $\left(\frac{dN}{d \log D} \right)_i$ is the measured quantity by the SMPS for bin i , and $D_{i,\text{SMPS}}$ is the size (diameter) of the size bin i . The label 'SMPS' is added to indicate that this is the size of the aerosols when they are measured by the SMPS. The normalisation constant S is then obtained as:

$$S = \frac{6}{\pi} \frac{\sum_j \frac{C_{j,\text{surf}}}{\rho_j}}{\sum_i \left(\frac{dN}{d \log D} \right)_i D_{i,\text{SMPS}}^3} \quad (5)$$

Note that we do not include water in the aerosol components j , because the SMPS measures the size of the aerosols after drying. However, we include ammonium nitrate, although it may have evaporated from the aerosols on drying.

Modelling partitioning NH_4NO_3 in the CBL

J. M. J. Aan de Brugh et al.

Title Page

Abstract

Introduction

Conclusions

References

Tables

Figures

⏪

⏩

◀

▶

Back

Close

Full Screen / Esc

Printer-friendly Version

Interactive Discussion



is not expected to vary considerably. Moreover, the effect of the refractive index is much smaller than the effect of an increase in geometrical cross section of the aerosols by hygroscopic growth. Therefore, we think that variations in the refractive indices only play a minor role.

The last thing required for the optical calculation is the actual size of the aerosols per bin (at any altitude). The actual size is generally larger than the dry size measured at the SMPS because of condensation of water and eventually additional ammonium nitrate. Our assumption of inert aerosol numbers (see above) implies that the number concentration does not change because of condensation of water and additional ammonium nitrate. The new size of the aerosols should be sufficient to fit all material (ammonium sulphate, ammonium nitrate and water):

$$\sum_j \frac{C_j(z)}{\rho_j} = \frac{\pi}{6} Z(z) S \sum_i \left(\frac{dN}{d \log D} \right)_i D_{i,\text{actual}}^3(z) \quad (8)$$

5 This equation differs from Eq. (4) in three aspects. First, the concentration of aerosol components and numbers are now at altitude z instead of at the surface. Second, the diameter of the aerosols is now the actual (wet) diameter instead of the dry diameter and therefore water is also included in the components j . Third, the normalisation constant S is now known (from Eqs. 4 and 5) while the diameters ($D_{i,\text{actual}}(z)$) are
 10 unknown and should be solved. This single equation has 70 unknowns (one $D_{i,\text{actual}}(z)$ for size bin), so there is by far no unique solution. By choosing which solution of Eq. (8) to take, we will choose the way in which additional material is distributed over the size bins. We will introduce two possibilities to distribute the condensed material over the size bins.

15 One way is to assume mutual equilibrium between the aerosols. That is achieved by enforcing the same composition for each aerosol size class, which means that the volume of condensed matter should be proportional to the aerosol volume.

Modelling partitioning NH_4NO_3 in the CBL

J. M. J. Aan de Brugh et al.

Title Page	
Abstract	Introduction
Conclusions	References
Tables	Figures
⏪	⏩
◀	▶
Back	Close
Full Screen / Esc	
Printer-friendly Version	
Interactive Discussion	



$$\begin{aligned}
 dV &\equiv XV = \frac{\pi}{6}XD^3 \\
 dV &= \frac{\pi}{2}D^2dD \\
 \frac{\pi}{2}D^2dD &= \frac{\pi}{6}XD^3 \\
 dD &= \frac{1}{3}XD
 \end{aligned}
 \tag{9}$$

Here, X is defined as the constant of proportionality between the volume of the condensed matter (dV) and the aerosol volume (V). In this case, all aerosol diameters grow with a constant *factor* ($\frac{1}{3}X$). This factor can be calculated with the following formula.

$$\frac{D_{i,\text{actual}}}{D_{i,\text{SMPS}}} = \sqrt[3]{\frac{\sum_j \frac{C_j(z)}{\rho_j}}{\sum_j \frac{C_{j,\text{surf}}}{\rho_j}}}
 \tag{10}$$

Note that aerosol water is not counted in the term $C_{j,\text{surf}}$, like in Eq. (5).

A second possibility that we will explore is the distribution of the condensable material proportional to aerosol surface, the area where condensation takes place.

$$\begin{aligned}
 dV &\equiv XA = \pi XD^2 \\
 dV &= \frac{\pi}{2}D^2dD \\
 \frac{\pi}{2}D^2dD &= \pi XD^2 \\
 dD &= 2X
 \end{aligned}
 \tag{11}$$

Here, X is defined as the constant of proportionality between the volume of the condensed matter (dV) and the aerosol surface area (A). In this case, all diameters grow

**Modelling
partitioning NH_4NO_3
in the CBL**

J. M. J. Aan de Brugh
et al.

Title Page	
Abstract	Introduction
Conclusions	References
Tables	Figures
◀	▶
◀	▶
Back	Close
Full Screen / Esc	
Printer-friendly Version	
Interactive Discussion	



with a constant *amount* ($2X$). The value of dD can be solved by substituting $D_{i,\text{actual}}$ with $D_{i,\text{SMPS}} + dD$ in Eq. (8) and solve dD numerically.

$$\sum_j \frac{C_j(z)}{\rho_j} = \frac{\pi}{6} Z(z) S \sum_i \left(\frac{dN}{d \log D} \right)_i (D_{i,\text{SMPS}} + dD)^3 \quad (12)$$

On short timescales, aerosols will tend to grow proportional to surface area ($\sim D^2$). If the ambient conditions remain constant for a longer time period, the different aerosol size classes have time to equilibrate. In such cases, the aerosols have grown proportional to volume ($\sim D^3$). This change from ($\sim D^2$) to ($\sim D^3$) has been shown by Meng and Seinfeld (1996). They present a box-model simulation with two different aerosol size classes in disequilibrium with gas. Initially the fine aerosols equilibrate with the gas by quick condensation ($\sim D^2$). Later on, the coarse aerosols equilibrate with the gas, depleting the gas phase concentrations. Then, the fine aerosols are no longer in equilibrium with the gas and the semi-volatile components evaporate out again ($\sim D^3$). An illustrative example is given in Fig. 2 of Meng and Seinfeld (1996). It is hard to determine which of the two possibilities is best and the actual distribution is probably somewhere in between, depending on the rate of change of the ambient conditions. Since conditions of an air mass change fast in a convective boundary layer, our main result will be calculated with the ($\sim D^2$)-distribution. Sensitivity studies will show the difference when using the ($\sim D^3$)-distribution (Sect. 3.3).

With the number concentrations for each bin, the refractive index of the aerosols and the actual size of each bin, we can calculate the scattering coefficient with the Mie module.

3 Results and discussion

First, we will calculate the equilibria of the gas-aerosol system with ISORROPIA and compare these to surface observations for a long measurement period. Next, we will

Modelling partitioning NH_4NO_3 in the CBL

J. M. J. Aan de Brugh et al.

Title Page

Abstract

Introduction

Conclusions

References

Tables

Figures

⏪

⏩

◀

▶

Back

Close

Full Screen / Esc

Printer-friendly Version

Interactive Discussion



present the calculated surface partitioning, aerosol nitrate profiles and scattering profiles, using the model as explained in Sect. 2 for three clear days in May 2008. We will compare these with surface and aircraft observations.

3.1 ISORROPIA only

5 In contrast to other countries, the ammonia concentration in the Netherlands is in most cases sufficiently high to neutralise all sulphate and all nitrate (Schaap et al., 2004). Excess ammonia remains in the gas phase regardless of the meteorological situation, resulting in a minimum gas phase fraction greater than 0 % for ammonium (not shown). The nitrate partitioning, however, varies between 100 % gas and 100 % aerosol, making
10 it a good indicator for the gas-aerosol equilibrium. Therefore, we will focus on the nitrate partitioning.

Schaap et al. (2010) already showed that ISORROPIA calculates a too large aerosol nitrate fraction during winter and during summer nights and a too large gas phase fraction during summer days. We reproduced these results. In Fig. 1, the results of
15 just May 2008 are shown, which can be considered a summer month. The observed nitrate partitioning sometimes exhibits a clear diurnal cycle, for example in the period from 6 May to 13 May (see Fig. 1). During this period with fair weather conditions with weak wind, the diurnal cycles in the calculated equilibria are too large and have a small phase shift, with the calculations an hour or two ahead of the observations. Because
20 these periods are easier to represent in a simplified model, the focus of our study will be on three clear days. At some days, for instance 17 to 31 May, the diurnal cycle in the observations is disturbed. ISORROPIA sometimes calculates no diurnal cycle at all (e.g. 17 May or 27 May), overestimating the aerosol phase fraction like in the winter. In many days, however, ISORROPIA exhibits a diurnal cycle, which is smaller than in the
25 fair-weather period. There is no clear relationship between total nitrate concentration and the partitioning.

The three days selected for our study are displayed in Fig. 2. We recognise a diurnal cycle in the observed partitioning on 6 May. On 8 May, the observations start similar

Modelling partitioning NH_4NO_3 in the CBL

J. M. J. Aan de Brugh et al.

Title Page

Abstract

Introduction

Conclusions

References

Tables

Figures

⏪

⏩

◀

▶

Back

Close

Full Screen / Esc

Printer-friendly Version

Interactive Discussion



to 6 May, but the gas phase fraction suddenly decreases in the evening hours. On 21 May, both ISORROPIA and the observations show a large aerosol fraction, which is due to the relatively low temperature on that day. However, the observed partitioning lacks a clear diurnal cycle, while ISORROPIA still shows a diurnal cycle like the other 5 days. Our hypothesis is that the gas-aerosol system does never reach equilibrium. This may explain differences between the ISORROPIA calculations and the observations, even if the equilibrium calculated by ISORROPIA is correct. With a non-instantaneous equilibrium, turbulent mixing of air from higher altitudes influences the partitioning at the surface.

10 3.2 Column model results

We performed three simulations for each of the three selected days, in which we set the partitioning timescale parameter (τ_p) to 20 s, 1800 s and 7200 s (see Eq. 2). The 20-s 15 timescale mimics instant equilibrium. With these simulations, we test the hypothesis that a non-instantaneous equilibrium bridges the gap between the calculated equilibrium by ISORROPIA and the observed partitioning (see Figs. 1 and 2).

3.2.1 Tuning the meteorology

As we explained in Sect. 2.1, we tune meteorological input data to reproduce the CE-SAR data. In Fig. 3 is shown that the temperature is represented very well and the relative humidity is represented reasonably. We underestimate the humidity in the morning and we overestimate the humidity in the evening. This is probably caused by a too sharp increase and decrease of the boundary layer height during the morning and evening transitions in the model. This means that we model too much dry air 20 entrainment in the morning, reducing the humidity. In the evening, we model a too shallow boundary layer (~ 30 m), where moist air is trapped, increasing the humidity. The nocturnal boundary layer height at Cabauw usually ranges from 60 m to 540 m and is often underestimated by models (Steenefeld et al., 2007). The boundary layer height 25

Modelling partitioning NH_4NO_3 in the CBL

J. M. J. Aan de Brugh et al.

Title Page

Abstract

Introduction

Conclusions

References

Tables

Figures

⏪

⏩

◀

▶

Back

Close

Full Screen / Esc

Printer-friendly Version

Interactive Discussion



reaches its maximum close to 2 km for 8 May and 21 May and about 1.5 km for 6 May. These values are in good correspondence with the backscatter data.

3.2.2 Partitioning at the surface

To illustrate the effect of a delayed equilibrium, we first show ISORROPIA calculations with a partitioning timescale taken into account and applying Eq. (2), but not taking into account boundary layer mixing. For these calculations, we used time-interpolated meteorological data from the CESAR observations and time-interpolated observations of total ammonium, total nitrate and sulphate from the MARGA. This results in a very small weakening and delay of the diurnal cycle on increasing τ_p (see Fig. 4). Secondly, we show modelled surface partitioning of nitrate in our column model with the meteorological situation tuned as in Sect. 3.2.1. This results in a much greater weakening and delay of the diurnal cycle as well as an average shift towards the aerosol phase (see Fig. 5). Additionally, small differences occur because the column model uses tuned meteorology (Sect. 3.2.1), while the (nudged) ISORROPIA equilibrium use direct CESAR data. These latter differences are the only differences visible in the simulation with quasi-instantaneous equilibrium ($\tau_p = 20$ s).

The greater weakening and delay of the diurnal cycle as well as the shift towards the aerosols phase in the column model (Fig. 5) are caused by vertical mixing. In the convective boundary layer, air from the upper boundary layer is mixed towards the surface. That air experienced a lower absolute temperature and a higher relative humidity and thus contains more aerosol nitrate and less nitric acid compared to the equilibrium at the surface. If the equilibrium is restored only slowly (high τ_p), the nitrate remains longer in the aerosol phase, resulting in a higher aerosol fraction of nitrate at the surface. This effect causes a further weakening of the diurnal cycle. Moreover, because there is no counterbalancing effect during the night (mixing in the nocturnal boundary layer is inefficient), this effect also displaces the average towards the aerosol phase. Furthermore, the enhancement of aerosol nitrate in the convective boundary layer causes the maximum gas phase fraction to occur after the convective boundary

Modelling partitioning NH_4NO_3 in the CBL

J. M. J. Aan de Brugh et al.

Title Page

Abstract

Introduction

Conclusions

References

Tables

Figures

⏪

⏩

◀

▶

Back

Close

Full Screen / Esc

Printer-friendly Version

Interactive Discussion



layer has collapsed (18:00 UTC or later, see Fig. 5), indicating that convective mixing has a significant effect on the nitrate partitioning at the surface.

Increasing the timescale of partitioning improves the correspondence of the modelled nitrate partitioning at the surface to the observations, especially on days where advection plays no significant role, which is indicated by a smooth diurnal cycle in the observed surface nitrate partitioning (e.g. 6 May and 11 May). The improvement on 6 May with $\tau_p = 7200$ s is impressive (see Fig. 5). On 8 May and 21 May, we simulate too low gas phase fractions during the night. Our model, specialised in the convective boundary layer, evidently has more difficulties during the night. Also, the diurnal cycles in the observed partitioning on 8 May and 21 May are disturbed. Our model, not able to simulate advection, will always result in a smooth diurnal cycle. On 8 May, we simulate the correct maximum gas phase fraction (30 %) with $\tau_p = 7200$ s, which is an improvement over the instant-equilibrium simulation. However, the timing of the peak is better with shorter τ_p . On 21 May, we simulate approximately the correct gas phase fraction in the afternoon (10 %), with a smaller τ_p -sensitivity. This low gas phase fraction is caused by the low temperature on that day.

3.2.3 Aerosol nitrate profiles

The diurnal variation of the simulated aerosol nitrate profiles are displayed in Fig. 6. Several afternoon profiles show enhanced aerosol nitrate concentrations with altitude within the well-mixed boundary layer due to different gas-aerosol equilibria in the lower and upper boundary layer. The longer the partitioning timescale, the weaker the vertical nitrate gradients, because vertical mixing plays a more prominent role at high τ_p . The strength of the vertical gradient is positively correlated with the gas phase fraction of nitrate at the surface, which is largest on 6 May and smallest on 21 May. This is logical, because the conditions favour the aerosol phase at higher altitude. Therefore, it is the gas phase nitric acid at the surface that may undergo a phase transition when moving to the upper boundary layer.

Modelling partitioning NH_4NO_3 in the CBL

J. M. J. Aan de Brugh et al.

Title Page

Abstract

Introduction

Conclusions

References

Tables

Figures

⏪

⏩

◀

▶

Back

Close

Full Screen / Esc

Printer-friendly Version

Interactive Discussion



3.2.4 Optical analysis

We calculated the scattering coefficients according to Sect. 2.2.3 and compared them with the scattering coefficients measured by Morgan et al. (2010). The SMPS data required for the optical calculations were only available for the second half of May 2008, so for 6 May and 8 May, we used the SMPS data from 21 May. We will analyse the sensitivity of the optical properties to the aerosol size distribution in Sect. 3.3. Figure 8 shows the modelled scattering profiles for the three selected days. Of each simulation, a plume of three profiles from afternoon hours is shown. The thick $f(\text{RH})$ line is obtained by taking a fixed mixing ratio of aerosol components representative for the lower boundary layer and assuming instant equilibrium for aerosol water. Repartitioning of ammonium nitrate is not taken into account in this latter calculation. Generally, $f(\text{RH})$ rises with altitude. Thus, the effect of additional moisture by rising relative humidity with altitude outweighs the effect of lower aerosol volume concentrations due to lower air density (note that in a well-mixed boundary layer, the mixing ratio is constant with height, not the concentrations).

The observations presented in Fig. 9 of Morgan et al. (2010) are projected on the graphs of 8 May and 21 May. The $f(\text{RH})$ profiles of Morgan et al. (2010) are obtained in a similar way as the modelled one. It is based on the measured scattering coefficient at the surface at Cabauw and the observed relative humidity. The effect of additional moisture on aerosols is parameterised as Eq. (1) (see Sect. 2.1). This equation is solved as follows.

$$\sigma_z = \sigma_0 \frac{1 + a\text{RH}_z^b}{1 + a\text{RH}_0^b} \quad (13)$$

Here, σ_z is the scattering coefficient at altitude z , σ_0 is the measured scattering coefficient at the surface, RH_z and RH_0 are the relative humidities at altitude z and surface. Coefficients a and b are obtained by measurements in the aircraft (see Sect. 2.1). As

Modelling partitioning NH_4NO_3 in the CBL

J. M. J. Aan de Brugh et al.

Title Page

Abstract

Introduction

Conclusions

References

Tables

Figures

⏪

⏩

◀

▶

Back

Close

Full Screen / Esc

Printer-friendly Version

Interactive Discussion



with the modelled $f(\text{RH})$, the effect of additional moisture on aerosols is also partially compensated by the lower aerosol concentrations due to lower air density.

As was the case for the aerosol nitrate profiles, the gradients in the scattering coefficient are stronger with short partitioning timescale. Also, on 6 May the gradients are stronger and on 21 May the gradients are weaker. On 6 May and 8 May we model a stronger gradient in the scattering coefficient than $f(\text{RH})$ when the timescale of partitioning is not too long. For 21 May, we model a strongly rising $f(\text{RH})$ due to the high relative humidity in the upper boundary layer. The differences between $f(\text{RH})$ and the modelled scattering profiles is mostly due to disequilibrium of aerosol water, as repartitioning of nitrate plays only a small role on this day (see Sect. 3.2.3).

For both 8 May and 21 May, our model underestimates the scattering coefficient by about a factor of two, mainly due to the lack of organic aerosols in our model. For 8 May, the simulation with $\tau_p = 20$ s corresponds well to the observations, if we disregard the general underestimation. Like the observed aerosol nitrate concentrations, the observed scattering coefficients on 8 May exhibit large variability, which can be due to differences between convective updrafts and downdrafts as discussed in Sect. 3.2.3. For 21 May, Morgan et al. (2010) do observe a clear gradient in the scattering coefficient, much stronger than $f(\text{RH})$ (red in Fig. 8). The observed aerosol nitrate profile from the AMS, however, does not show such a gradient (see Fig. 7). This suggests that the gradient in the scattering profiles is not due to additional aerosol ammonium nitrate. Possibly, the gradient in the observed scattering coefficient is due to organic aerosol components that are more volatile than ammonium nitrate. Our model, lacking these organic components, evidently does not calculate a gradient in the scattering coefficient.

At high relative humidities, the aerosol water uptake becomes extra sensitive to small changes in the relative humidity. This causes the aerosol water uptake and therefore the calculated scattering coefficient to reach very high values at relative humidities above 90%. This is the case in our simulation of 21 May, above 1.5 km altitude. For $\tau_p = 20$ s and for $f(\text{RH})$, we calculate a very sudden increase in the scattering

Modelling partitioning NH_4NO_3 in the CBL

J. M. J. Aan de Brugh et al.

[Title Page](#)[Abstract](#)[Introduction](#)[Conclusions](#)[References](#)[Tables](#)[Figures](#)[Back](#)[Close](#)[Full Screen / Esc](#)[Printer-friendly Version](#)[Interactive Discussion](#)

coefficients to a value more than three times as high as at the surface. The simulations with higher τ_p do not reach those high values yet in the afternoon because the model also slows down aerosol water uptake with that time constant. However, the high- τ_p simulations also show high scattering coefficients later in the day when the convective boundary layer collapses (not shown). The observations also do not show such a sudden increase in the scattering coefficients, indicating that that the very sensitive regime was not reached at the time of the observations.

3.3 Sensitivity of optical properties

In this section, we present a more technical analysis on how the optical properties of the aerosol vary with the aerosol size distribution, the aerosol composition, and the assumption on how condensed matter is distributed ($\sim D^2$ or $\sim D^3$). We calculate the optical properties with fixed concentrations of aerosol components in equilibrium with air with varying relative humidity ($f(\text{RH})$). Like in the $f(\text{RH})$ case in Sect. 3.2.4, we do not allow for repartitioning of ammonium nitrate, only the equilibrium for water is calculated. We will compare the calculated $f(\text{RH})$ with observed function fits. First, we rewrite Eq. (1) (see Sect. 2.1).

$$\frac{\sigma}{\sigma_{\text{dry}}} - 1 = a\text{RH}^b \quad (14)$$

The left hand side of Eq. (14) is the relative gain in scattering coefficient. The right hand side of Eq. (14) is the function fit with parameters a and b . Note that these a and b values depend on the type of aerosol measured. The function fit is a straight line in a log-log plot with slope b and value a at 100 % relative humidity ($\text{RH} = 1$). By plotting the relative gain in scattering coefficient (left hand side) on a log-log scale, we can evaluate if our optical calculations result in a similar relationship between scattering coefficient and relative humidity.

Out of the three selected days, valid data of the aerosol size distribution is only available for 21 May. We will therefore evaluate the simulated $f(\text{RH})$ during this day.

Modelling partitioning NH_4NO_3 in the CBL

J. M. J. Aan de Brugh et al.

Title Page

Abstract

Introduction

Conclusions

References

Tables

Figures

◀

▶

◀

▶

Back

Close

Full Screen / Esc

Printer-friendly Version

Interactive Discussion



**Modelling
partitioning NH_4NO_3
in the CBL**J. M. J. Aan de Brugh
et al.

Title Page

Abstract

Introduction

Conclusions

References

Tables

Figures

⏪

⏩

◀

▶

Back

Close

Full Screen / Esc

Printer-friendly Version

Interactive Discussion



Measurements of $f(\text{RH})$ are available for several flights in May 2008, including 21 May. Figure 9 displays the comparison between modelled and observed $f(\text{RH})$. The highlighted lines in Fig. 9 correspond to the same time, 21 May around 11:30 UTC. For the majority of the RH -domain, we calculate a power-law relationship between the scattering gain and the relative humidity, indicated by the straight lines. If we analyse these straight parts, we can assign an a and b -value to each of the calculations. At high relative humidities, however, the calculations give higher scattering gains. This issue was also discussed in Sect. 3.2.4 (see also Fig. 8). The value a is a multiplication factor of the RH -dependent part of $f(\text{RH})$. Thus, a high (low) value for a indicates that the optical properties of the aerosol are more (less) sensitive to the relative humidity. The value b is the power of the relative humidity, which reduces the scattering gain especially at moderate relative humidities. Thus, a high (low) value for b indicates a reduced (increased) scattering coefficient at moderate humidities compared to low or high humidities.

Remarkable is that the aircraft measurements show very little variability in their a -values (all very close to 1.0), while the b -values vary considerably (3.83 on 21 May to 7.15 on 12 May). The calculations assuming condensation ($\sim D^2$) also give a -values very close to 1.0 ($a = 1.046 \pm 0.087$) and strong variations in b -values, although the calculated b -values are significantly lower on average ($b = 3.167 \pm 0.928$). The calculations assuming condensation ($\sim D^3$) differ more from the observations. The a -values are too high ($a = 1.979 \pm 0.058$). The b -values of the ($\sim D^3$) simulation are all similar to the lowest (i.e. worst) b -values of the ($\sim D^2$) simulation, resulting in a low average and a very small spread ($b = 2.318 \pm 0.048$). This analysis suggests that the ($\sim D^2$) assumption performs better than the ($\sim D^3$) assumption, which is an indication that the gas-aerosol system is generally in disequilibrium (see discussion in Sect. 2.2.3).

High values of b are associated with a higher ammonium nitrate content with respect to ammonium sulphate, which is in line with Tang (1996). On 21 May, however, the ratio between ammonium nitrate and ammonium sulphate did not vary much. High values of b are also associated with an aerosol size distribution dominated by fine particles.

Differences in the aerosol size distribution are responsible for the variations in b for the ($\sim D^2$) calculations. In the ($\sim D^3$) calculations, where condensation on coarse aerosols is favoured, the b -values are small. The observations show higher b -values than the calculations, which can mean two things. One possibility is that the real aerosols take up more water than the simulated aerosols. As discussed in Morgan et al. (2010) and in this work, aircraft observations show elevated nitrate to sulphate ratios compared to the surface, on which the calculations of Fig. 9 are based. This is associated with higher b -values. Moreover, semi-volatile organic aerosols might also result in higher b -values. Organic compounds have strongly varying hygroscopic properties (Varutbangkul et al., 2006), so organic compounds could in theory also be responsible for the high observed b -values. The second possibility is that the assumption of homogeneous spherical aerosols causes a bias, an issue that will not be explored here.

3.4 Correcting the instant equilibrium

In Sects. 3.1 and 3.2.2 we showed that assuming instant gas-aerosol equilibrium may result in biases in the surface nitrate partitioning (already shown in Schaap et al., 2010). Most coarse-resolution models, however, do not benefit from a delay time as used in this study, because it is required that turbulent mixing is resolved by the model. We will therefore present a practical modification of the instant-equilibrium assumption by using ISORROPIA with the temperature and relative humidity at a higher altitude rather than at the surface.

We repeated the instant-equilibrium calculations for the fair-weather period (6 May–13 May) with observations of temperature and relative humidity at 200 m altitude (highest observation in the Cabauw tower). As shown in Fig. 10 (upper panel, green line), we see that the results improve significantly during the nights. In daytime, the difference between the 200-m meteo and the 2-m meteo is very small, indicating that the altitude of 200 m is still too low during daytime.

Because no observations are available at altitudes above 200 m, we obtained the temperature and humidity at higher altitudes by transforming the observations at 200 m

Modelling partitioning NH_4NO_3 in the CBL

J. M. J. Aan de Brugh et al.

Title Page

Abstract

Introduction

Conclusions

References

Tables

Figures

⏪

⏩

◀

▶

Back

Close

Full Screen / Esc

Printer-friendly Version

Interactive Discussion



assuming constant specific humidity and potential temperature. These assumptions are only valid in a well-mixed boundary layer. We will therefore only use this transformation at unstable conditions ($T_{2\text{ m}} > T_{200\text{ m}}$). We prescribed an altitude as function of the time in the day with three fit parameters. We calculated the equilibrium of the gas-aerosol system using the meteorological data at that altitude (using the transformation from the 200-m observation), only at unstable conditions in the period from 6 May–13 May. We determine the fit parameters such that the error in the calculated gas-aerosol equilibrium is smallest. The fit function that is used looks like:

$$h = a + b \cdot \sin\left(2\pi\left(\frac{t}{24\text{h}} - c\right)\right) \quad (15)$$

Here, t is the time, h is the altitude and $\{a, b, c\}$ are fit parameters that are tuned to $a = 190.1\text{ m}$, $b = 418.5\text{ m}$ and $c = 0.398$. The height function is displayed in the lower panel of Fig. 10 and the gas-aerosol equilibrium with this height function is shown in upper panel of Fig. 10 in dark yellow. Note again that periods with stable conditions are skipped.

This analysis shows that, at least for clear days in May, biases in the surface nitrate partitioning can be substantially decreased by calculating the equilibrium using temperature and humidity at a higher altitude rather than at the surface. The altitude at which the temperature and humidity should be sampled can be described with a simple function with only three parameters (Eq. 15).

4 Conclusions

An explanatory model study has been carried out to investigate the partitioning of ammonium nitrate aerosols in the convective boundary layer on clear days in May 2008. On clear summer days, the equilibrium model ISORROPIA show a clear diurnal cycle in the equilibrium of ammonium nitrate, with a maximum gas phase fraction during daytime and a maximum aerosol phase fraction during night-time. This diurnal cycle

Modelling partitioning NH_4NO_3 in the CBL

J. M. J. Aan de Brugh et al.

Title Page

Abstract

Introduction

Conclusions

References

Tables

Figures

⏪

⏩

◀

▶

Back

Close

Full Screen / Esc

Printer-friendly Version

Interactive Discussion



in the calculated equilibrium, however, is stronger than the diurnal cycle in the partitioning observed with the MARGA-instrument at Cabauw. Our hypothesis is that the gas-aerosol equilibrium is never fully established in reality.

When introducing a finite speed at which gas-aerosol equilibrium is established, the modelled partitioning is closer to the observations than when assuming instant equilibrium. The diurnal cycle in the gas-aerosol partitioning at the surface is delayed, weakened and on average shifted towards the aerosol phase due to mixing with air from the upper boundary layer. The observed gas-aerosol partitioning at the surface is best reproduced with a long partitioning timescale (two hours). Coarse-resolution models can account for the delayed gas-aerosol equilibrium by calculating the surface gas-aerosol partitioning using the temperature and relative humidity at a higher altitude. For clear days in May 2008, this altitude is close to 200 m in the night and up to 600 m on daytime.

In the upper boundary layer, ammonium nitrate shifts to the aerosol phase because of lower temperatures and higher relative humidities. This creates a gradient of aerosol nitrate concentration in the convective boundary layer even though the layer is well-mixed. When the timescale of gas-aerosol equilibrium is long, the gradient is small. Our model shows aerosol nitrate gradients comparable to Morgan et al. (2010) when partitioning is assumed quick (less than a half an hour). Quantitative comparison is difficult because the measurements of Morgan et al. (2010) consist of the fine fraction ($PM_{0.7}$), while our model simulates PM_{10} .

The calculated scattering coefficient shows gradients with altitude similar to those of aerosol nitrate. Our model underestimates the scattering coefficient by about a factor of two due to the lack of organic aerosols in our model. Morgan et al. (2010) measured organic aerosol with the AMS and concluded that its contribution to the total aerosol mass is large. Organic aerosols are generally quite abundant in Europe (Putaud et al., 2004). Sensitivity studies point out that the optical properties depend on the aerosol size distribution, the aerosol composition and on how the model assumes the distribution of condensed matter. As explained in Tang (1996), the hygroscopic

Modelling partitioning NH_4NO_3 in the CBL

J. M. J. Aan de Brugh et al.

[Title Page](#)[Abstract](#)[Introduction](#)[Conclusions](#)[References](#)[Tables](#)[Figures](#)[Back](#)[Close](#)[Full Screen / Esc](#)[Printer-friendly Version](#)[Interactive Discussion](#)

growth on ammonium nitrate aerosols is more sensitive to the relative humidity than that of ammonium sulphate aerosols. With our optical analysis, we also found indirect evidence that assuming condensation proportional to aerosol surface ($\sim D^2$) is more realistic than assuming condensation proportional to aerosol volume ($\sim D^3$).

5 The situation at the surface is simulated best with a long partitioning timescale while the vertical profiles are simulated best with a short partitioning timescale. This issue should be investigated with a size-resolved aerosol approach (e.g. M7 Vignati et al., 2004). The size-dependence of the equilibration time (Meng and Seinfeld, 1996) can be implemented in more detail than in the bulk approach described here.

10 *Acknowledgements.* We would like to thank Chiel van Heerwaarden for programming the majority of the Wageningen University Single Column Model. We also would like to thank Geert-Jan Roelofs for sharing his knowledge about this subject.

References

15 Anderson, T. L., Covert, D. S., Marshall, S. F., Laucks, M. L., Charlson, R. J., Waggoner, A. P., Ogren, J. A., Caldwell, R., Holm, R. L., Quant, F. R., Sem, G. J., Wiedensohler, A., Ahlquist, N. A., and Bates, T. S.: Performance characteristics of a high-sensitivity, three-wavelength, total scatter/backscatter nephelometer, *J. Atmos. Ocean. Tech.*, 13, 967–986, doi:10.1175/1520-0426(1996)013<0967:PCOAHS>2.0;2, 1996. 28280

20 Aspnes, D. E., Theeten, J. B., and Hottier, F.: Investigation of effective-medium models of microscopic surface roughness by spectroscopic ellipsometry, *Phys. Rev. B.*, 20, 3292–3302, doi:10.1103/PhysRevB.20.3292, 1979. 28285

Bruggeman, D. A. G.: Berechnung verschiedener physikalischer Konstanten von heterogenen Substanzen, 1. Dielektrizitätskonstanten und Leitfähigkeiten der Mischkörper aus isotropen Substanzen, *Ann. Phys.*, 416, 636–664, doi:10.1002/andp.19354160802, 1935. 28285

25 Canagaratna, M. R., Jayne, J. T., Jimenez, J. L., Allan, J. D., Alfarra, M. R., Zhang, Q., Qnasch, T. B., Drewnick, F., Coe, H., Middlebrook, A., Delia, A. E., Williams, L. R., Trimborn, A. M., Northway, M. J., DeCarlo, P. F., Kolb, C. E., Devidovits, P., and Worsnop, D. R.: Chemical and microphysical characterization of ambient aerosols with the aerodyne aerosol mass spectrometer, *Mass Spectrom. Rev.*, 26, 185–222, doi:10.1002/mas.20115, 2007. 28280

28301

ACPD

11, 28273–28317, 2011

Modelling partitioning NH_4NO_3 in the CBL

J. M. J. Aan de Brugh
et al.

Title Page

Abstract

Introduction

Conclusions

References

Tables

Figures

⏪

⏩

◀

▶

Back

Close

Full Screen / Esc

Printer-friendly Version

Interactive Discussion



**Modelling
partitioning NH_4NO_3
in the CBL**J. M. J. Aan de Brugh
et al.

Title Page

Abstract

Introduction

Conclusions

References

Tables

Figures

◀

▶

◀

▶

Back

Close

Full Screen / Esc

Printer-friendly Version

Interactive Discussion



- Capaldo, K. P., Pilinis C., and Pandis, S. N.: A computationally efficient hybrid approach for dynamic gas/aerosol transfer in air quality models, *Atmos. Environ.*, 34, 3617–3627, doi:10.1016/S1352-2310(00)00092-3, 2000. 28276
- Cheng, Y. H. and Tsai, C. J.: Evaporation loss of ammonium nitrate particles during filter sampling, *J. Aerosol Sci.*, 28, 1553–1567, doi:10.1016/S0021-8502(97)00033-5, 1997. 28276
- DeCarlo, P. F., Slowik, J. G., Worsnop, D. R., Davidovits, P., and Jimenez, J. L.: Particle morphology and density characterization by combined mobility and aerodynamic diameter measurements. Part 1: Theory, *Aerosol Sci. Technol.*, 38, 1185–1205, doi:10.1080/027868290903907, 2004. 28280
- Drewnick, F., Hings, S. S., DeCarlo, P. F., Jayne, J. T., Gonin, M., Fuhrer, K., Weimer, S., Jimenez, J. L., Demerjian, K. L., Borrmann, S., Worsnop, and D. R.: A new time-of-flight aerosol mass spectrometer (TOF-AMS) – Instrument description and first field deployment, *Aerosol Sci. Technol.*, 39, 637–658, doi:10.1080/02786820500182040, 2005. 28280
- Feng, Y. and Penner, J. E.: Global modeling of nitrate and ammonium: Interaction of aerosols and tropospheric chemistry, *J. Geophys. Res.*, 112, D01304, doi:10.1029/2005JD006404, 2007. 28276
- Fisseha, R., Dommen, J., Gutzwiller, L., Weingartner, E., Gysel, M., Emmenegger, C., Kalberer, M., and Baltensperger, U.: Seasonal and diurnal characteristics of water soluble inorganic compounds in the gas and aerosol phase in the Zurich area, *Atmos. Chem. Phys.*, 6, 1895–1904, doi:10.5194/acp-6-1895-2006, 2006. 28277
- Fountoukis, C. and Nenes, A.: ISORROPIA II: a computationally efficient thermodynamic equilibrium model for $\text{K}^+ - \text{Ca}^{2+} - \text{Mg}^{2+} - \text{NH}_4^+ - \text{Na}^+ - \text{SO}_4^{2-} - \text{NO}_3^- - \text{Cl}^- - \text{H}_2\text{O}$ aerosols, *Atmos. Chem. Phys.*, 7, 4639–4659, doi:10.5194/acp-7-4639-2007, 2007. 28276, 28282
- Haywood, J. and Boucher, O.: Estimates of the direct and indirect radiative forcings due to tropospheric aerosols: a review, *Rev. Geophys.*, 38, 513–543, doi:10.1029/1999RG000078, 2000. 28275
- Hecht, E.: *Optics*, Fourth edition, Addison-Wesley Publishing Co., Reading, Pennsylvania, 2003. 28285
- Hess, M., Koepke, P., and Schult, I.: Optical Properties of Aerosols and Clouds: The Software Package OPAC, *B. Am. Meteorol. Soc.*, 79, 831–844, doi:10.1175/1520-0477(1998)079<0831:OPOAAC>2.0.CO;2, 1998. 28275
- Hong, S.-Y. and Pan, H.-L.: Nonlocal boundary layer vertical diffusion in a Medium-Range Forecast model, *Mon. Weather Rev.*, 124, 2322–2339, doi:10.1175/1520-

Modelling partitioning NH_4NO_3 in the CBL

J. M. J. Aan de Brugh
et al.

Title Page

Abstract

Introduction

Conclusions

References

Tables

Figures

⏪

⏩

◀

▶

Back

Close

Full Screen / Esc

Printer-friendly Version

Interactive Discussion



0493(1996)124<2322:NBLVDI>2.0.CO;2, 1996. 28282

Intergovernmental Panel on Climate Change, edited by: Solomon, S., Qin, D., Manning, M., Chen, Z., Marquis, M., Averyt, K. B., Tignor, M., and Miller, H. L.: Climate change 2007: The physical Science Basis, IPCC Fourth Assessment report (AR4), 2007. 28275

5 Jarvis, P. G.: The interpretation of the variations in leaf water potentials and stomatal conductance found in canopies in the field, *Philos. Trans. R. Soc. Lond. B*273, 593–610, doi:10.1098/rstb.1976.0035, 1976. 28282

Kaufman, Y. J., Tenré, D., and Boucher, O.: A satellite view of aerosols in the climate system, *Nature*, 419, 215–223, doi:10.1038/nature01091, 2002. 28275

10 Keuken, M. P., Schoonebeek, C. A. M., Vanwensveenlouter, A., and Slanina, J.: Simultaneous Sampling of NH_3 , HNO_3 , HCl , SO_2 and H_2O_2 in Ambient Air by a Wet Annular Denuder System, *Atmos. Environ.*, 22, 2541–2548, doi:10.1016/0004-6981(88)90486-6, 1988. 28279

Khlystov, A., Wyers, G. P., and Slanina, J.: The Steam-Jet Aerosol Collector, *Atmos. Environ.*, 29, 2229–2234, doi:10.1016/1352-2310(95)00180-7, 1995. 28279

15 Kulmala, M., Asmi, A., Lappalainen, H. K., Carslaw, K. S., Pöschl, U., Baltensperger, U., Hov, Ø., Brenquier, J.-L., Pandis, S. N., Facchini, M. C., Hansson, H.-C., Wiedensohler, A., and O'Dowd, C. D.: Introduction: European Integrated Project on Aerosol Cloud Climate and Air Quality interactions (EUCAARI) – integrating aerosol research from nano to global scales, *Atmos. Chem. Phys.*, 9, 2825–2841, doi:10.5194/acp-9-2825-2009, 2009. 28276

20 Madronich, S.: Photodissociation in the atmosphere. 1. Actinic flux and the effect of ground reflections and clouds, *J. Geophys. Res.*, 92, 9740–9752, doi:10.1029/JD092iD08p09740, 1987. 28282

Metzger, S., Dentener, F., Krol, M., Jeuken, A., and Lelieveld, J.: Gas/aerosol partitioning 2: Global modeling results, *J. Geophys. Res.*, 107, 4313, doi:10.1029/2001JD001103, 2002a. 28276

25 Metzger, S., Dentener, F., Pandis, S., and Lelieveld, J.: Gas/aerosol partitioning 1: A computationally efficient model, *J. Geophys. Res.*, 107, 4312, doi:10.1029/2001JD001102, 2002b. 28276

Meng, Z. and Seinfeld, J. H.: Time scales to achieve atmospheric gas-aerosol equilibrium for volatile species, *Atmos. Environ.*, 30, 2889–2900, doi:10.1016/1352-2310(95)00493-9, 1996. 28276, 28288, 28301

30 Morgan, W. T., Allan, J. D., Bower, K. N., Esselborn, M., Harris, B., Henzing, J. S., Highwood, E. J., Kiendler-Scharr, A., McMeeking, G. R., Mensah, A. A., Northway, M. J., Osborne, S.,

**Modelling
partitioning NH_4NO_3
in the CBL**J. M. J. Aan de Brugh
et al.

Title Page

Abstract

Introduction

Conclusions

References

Tables

Figures

◀

▶

◀

▶

Back

Close

Full Screen / Esc

Printer-friendly Version

Interactive Discussion



Williams, P. I., Krejci, R., and Coe, H.: Enhancement of the aerosol direct radiative effect by semi-volatile aerosol components: airborne measurements in North-Western Europe, *Atmos. Chem. Phys.*, 10, 8151–8171, doi:10.5194/acp-10-8151-2010, 2010. 28276, 28277, 28280, 28293, 28294, 28295, 28298, 28300, 28315

5 Morino, Y., Kondo, Y., Takegawa, N., Miyazaki, Y., Kita, K., Komazaki, Y., Fukuda, M., Miyakawa, T., Moteki, N., and Worsnop, D. R.: Partitioning of HNO_3 and particulate nitrate over Tokyo: Effect of vertical mixing, *J. Geophys. Res.*, 111, D15215, doi:10.1029/2005JD006887, 2006. 28277

Moya, M., Ansari, A. S., and Pandis, S. N.: Partitioning of nitrate and ammonium between the gas and particulate phases during the 1997 IMADA-AVER study in Mexico City, *Atmos. Environ.*, 35, 1791–1804, doi:10.1016/S1352-2310(00)00292-2, 2001. 28277

10 Nenes, A., Pandis, S. N., and Pilinis, C.: ISORROPIA: A new thermodynamic equilibrium model for multiphase multicomponent inorganic aerosols, *Aquat. Geochem.*, 4, 123–152, doi:10.1023/A:1009604003981, 1998. 28276

15 Noh, Y., Chun, W. G., Hong, Y., and Raasch, S.: Improvement of the K-profile model for the planetary boundary layer based on large eddy simulation data, *Bound. Lay. Meteorol.*, 107, 401–427, doi:10.1023/A:1022146015946, 2003. 28282

Putaud, J.-P., Raes, F., van Dingenen, R., Brüggemann, E., Facchini, M. C., Decesari, S., Fuzzi, S., Gehrig, R., Hüglin, C., Laj, P., Lorbeer, G., Maenhaut, W., Mihalopoulos, N., Müller, K., Querol, X., Rodriguez, S., Schneider, J., Spindler, G., ten Brink, H., Tørsetb, K., and Wiedensohler, A.: A European aerosols phenomenology–2: chemical characteristics of particulate matter at kerbside, urban, rural and background sites in Europe, *Atmos., Environ.*, 38, 2579–2595, doi:10.1016/j.atmosenv.2004.01.041, 2004. 28300

20 Rosenfeld, D., Lohmann, U., Raga, G. B., O’Dowd, C. D., Kulmala, M., Fuzzi, S., Reissell, A., and Andreae, M. O.: Flood or Drought: How Do Aerosols Affect Precipitation?, *Science*, 321, 1309–1313, doi:10.1126/science.1160606, 2008. 28275

Russchenberg, H. W. J., Bosveld, F., Swart, D., ten Brink, H., de Leeuw, G., Uijlenhoet, R., Arbesser-Rastburg, B., van der Marel, H., Ligthart, L., Boers, R., and Apituley, A.: Ground-based atmospheric remote sensing in The Netherlands; European outlook, *IEICE Transactions on Communications E88-B(6)*, 2252–2258, doi:10.1093/ietcom/e88-b.6.2252, 2005. 28278

30 Schaap, M., Müller, K., and ten Brink, H. M.: Constructing the European aerosol nitrate concentration Field from quality analysis data, *Atmos. Environ.*, 36, 1323–1335, doi:10.1016/S1352-

**Modelling
partitioning NH_4NO_3
in the CBL**J. M. J. Aan de Brugh
et al.

Title Page

Abstract

Introduction

Conclusions

References

Tables

Figures

◀

▶

◀

▶

Back

Close

Full Screen / Esc

Printer-friendly Version

Interactive Discussion

2310(01)00556-8, 2002. 28276

Schaap, M., van Loon, M., ten Brink, H. M., Dentener, F. J., and Builtjes, P. J. H.: Secondary inorganic aerosol simulations for Europe with special attention to nitrate, *Atmos. Chem. Phys.*, 4, 857–874, doi:10.5194/acp-4-857-2004, 2004. 28289

5 Schaap, M., Otjes, R. P., and Weijers, E. P.: Illustrating the benefit of using hourly monitoring data on secondary inorganic aerosol and its precursors for model evaluation, *Atmos. Chem. Phys. Discuss.*, 10, 12341–12370, doi:10.5194/acpd-10-12341-2010, 2010. 28277, 28279, 28289, 28298

10 Steeneveld, G. J., van de Wiel, B. J. H., and Holtslag, A. A. M.: Diagnostic equations for the stable boundary layer height: Evaluation and dimensional analysis, *J. Appl. Meteorol. Clim.*, 46, 212–225, doi:10.1175/JAM2454.1, 2007. 28290

Takahama, S., Wittig, A. E., Vayenas, D. V., Davidson, C. I., and Pandis, S. M.: Modeling the diurnal variation of nitrate during the Pittsburgh Air Quality Study, *J. Geophys. Res.*, 109, D16S06, doi:10.1029/2003JD004149, 2004. 28276

15 Tang, I. N.: Chemical and size effects of hygroscopic aerosols on light scattering coefficients, *J. Geophys. Res.*, 101, 19245–19250, doi:10.1029/96JD03003, 1996. 28275, 28297, 28300

ten Brink, H. M., Plomp, A., Spoelstra, H., and van de Vate, J. F.: A high-resolution electrical mobility aerosol spectrometer (MAS), *J. Aerosol Sci.*, 14, 589–597, doi:10.1016/0021-8502(83)90064-2, 1983. 28279

20 ten Brink, H. M., Kruisz, C., Kos, G. P. A., and Berner, A.: Composition/size of the light-scattering aerosol in the Netherlands, *Atmos. Environ.*, 31, 3955–3962, doi:10.1016/S1352-2310(97)00232-X, 1997. 28275

ten Brink, H., Otjes, R., Jongeman, P., and Kos, G.: Monitoring of the ratio of nitrate to sulphate in size-segregated submicron aerosol in the Netherlands, *Atmos. Res.*, 92, 270–276, doi:10.1016/j.atmosres.2008.12.003, 2009. 28279

25 Thomas, R. M., Trebs, I., Otjes, R., Jongejan, P. A. C., ten Brink, H., Phillips, G., Kortner, M., Meixner, F. X., and Nemitz, E.: An automated analyzer to measure surface-atmosphere exchange fluxes of water soluble inorganic aerosol compounds and reactive trace gases, *Environ. Sci. Technol.*, 43, 1412–1418, doi:10.1021/es8019403, 2009. 28277, 28279

30 Toon, O. B., Pollack, J. B., and Khare, B. N.: Optical-Constants of Several Atmospheric Aerosol Species – Ammonium-Sulfate, Aluminum-Oxide, And Sodium-Chloride, *J. Geophys. Res.*, 81, 5733–5748, doi:10.1029/JC081i033p05733, 1976. 28285

Troen, I. B. and Mahrt, L.: A simple model of the atmospheric boundary layer; sensitivity to the

**Modelling
partitioning NH_4NO_3
in the CBL**J. M. J. Aan de Brugh
et al.

Title Page

Abstract

Introduction

Conclusions

References

Tables

Figures

⏪

⏩

◀

▶

Back

Close

Full Screen / Esc

Printer-friendly Version

Interactive Discussion

surface evaporation, *Bound. Lay. Meteorol.*, 37, 129–148, doi:10.1007/BF00122760, 1986. 28282

Varutbangkul, V., Brechtel, F. J., Bahrein, R., Ng, N. L., Keywood, M. D., Kroll, J. H., Flagan, R. C., Seinfeld, J. H., Lee, A., and Goldstein, A. H.: Hygroscopic of secondary organic aerosols formed by oxidation of cycloalkanes, monoterpenes, sesquiterpenes, and related compounds, *Atmos. Chem. Phys.*, 6, 2367–2388, doi:10.5194/acp-6-2367-2006, 2006. 28298

Vestreng, V., Myhre, G., Fagerli, H., Reis, S., and Tarrasón, L.: Twenty-five years of continuous sulphur dioxide emission reduction in Europe, *Atmos. Chem. Phys.*, 7, 3663–3681, doi:10.5194/acp-7-3663-2007, 2007. 28275

Vestreng, V., Ntziachristos, L., Semb, A., Reis, S., Isaksen, I. S. A., and Tarrasón, L.: Evolution of NO_x emissions in Europe with focus on road transport control measures, *Atmos. Chem. Phys.*, 9, 1503–1520, doi:10.5194/acp-9-1503-2009, 2009. 28275

Vignati, E., Wilson, J., and Stier, P.: M7: An efficient size-resolved aerosol microphysics module for large-scale aerosol transport models, *J. Geophys. Res.*, 109, D22202, doi:10.1029/2003JD004485, 2004. 28301

Wang, S. C. and Flagan, R. C.: Scanning electrical mobility spectrometer, *Aerosol Sci. Technol.*, 13, 230–240, doi:10.1080/02786829008959441, 1990. 28279

Wang, J., Hoffmann, A. A., Park, R. J., Jacob, D. J., and Martin, S. T.: Global distribution of solid and aqueous sulfate aerosols: Effect of the hysteresis of particle phase transition, *J. Geophys. Res.*, 103, D11206, doi:10.1029/2007JD009367, 2008. 28283

Weast, R. C.: *Handbook of Chemistry and Physics*, 66th Edn., CRC Press, Florida, 1985. 28285

Weijers, E. P., Schaap, M., Nguyen, L., Matthijssen, J., Denier van der Gon, H. A. C., ten Brink, H. M., and Hoogerbrugge, R.: Anthropogenic and natural constituents in particulate matter in the Netherlands, *Atmos. Chem. Phys.*, 11, 2281–2294, doi:10.5194/acp-11-2281-2011, 2011. 28275

Wexler, A. S. and Seinfeld, J. H.: Analysis of aerosol ammonium nitrate departures from equilibrium during SCAQS, *Atmos. Environ.*, 26A, 579–591, doi:10.1016/0960-1686(92)90171-G, 1992. 28276

Wiedensohler, A.: An approximation of the bipolar charge distribution for particles in the sub-micron size range, *J. Aerosol Sci.*, 19, 387–389, doi:10.1016/0021-8502(88)90278-9, 1988. 28280

**Modelling
partitioning NH_4NO_3
in the CBL**J. M. J. Aan de Brugh
et al.

Title Page

Abstract

Introduction

Conclusions

References

Tables

Figures

◀

▶

◀

▶

Back

Close

Full Screen / Esc

Printer-friendly Version

Interactive Discussion



- Yu, S., Dennis, R., Roselle, S., Nenes, A., Walker, J., Eder, B., Schere, K., Swall, J., and Roberge, W.: An assessment of the ability of three-dimensional air quality models with current thermodynamic equilibrium models to predict aerosol NO_3^- , *J. Geophys. Res.*, 10, D07S13, 1–22, doi:10.1029/2004JD004718, 2005. 28276
- 5 Yu, X.-Y., Lee, T., Ayres, B., Kreidenweis, S. M., Malm, W., and Collett, J. L. J.: Loss of fine particulate ammonium from denuded nylon filters, *Atmos. Environ.*, 40, 4797–4807, doi:10.1016/j.atmosenv.2006.03.061, 2006. 28276
- Zhang, J., Charmeides, W. L., Weber, R., Cass, G., Orsini, D., Edgerton, E., Jongejan, P., and Slanina, J.: An evaluation of the thermodynamic equilibrium assumption for fine particulate composition: Nitrate and ammonium during the 1999 Atlanta Supersite experiment, *J. Geophys. Res.*, 108, 8414, doi:10.1029/2001JD001592, 2003. 28276
- 10 Zhang, X. and McMurry, P. H.: Evaporative losses of fine particulate nitrates during sampling, *Atmos. Environ.*, 26A, 3305–3312, doi:10.1016/0960-1686(92)90347-N, 1992. 28276

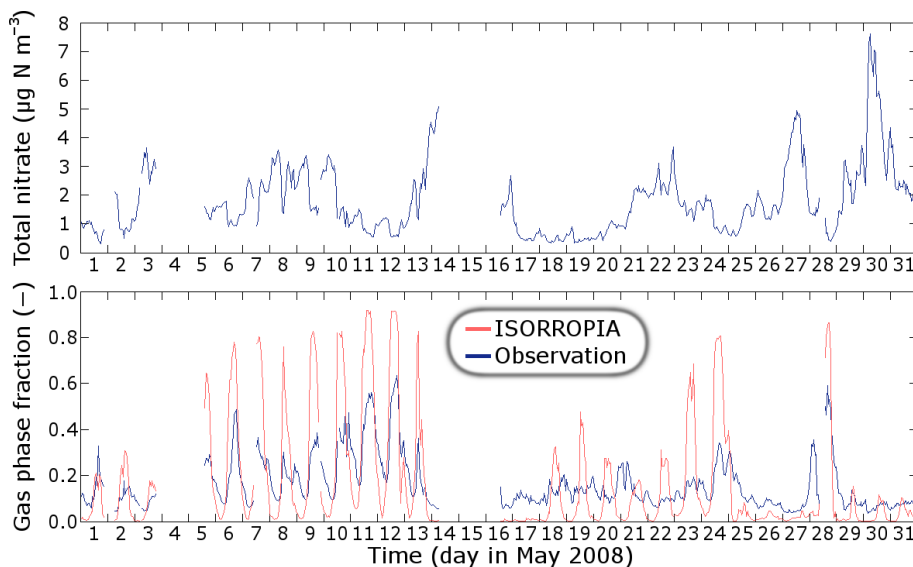
**Modelling
partitioning NH_4NO_3
in the CBL**J. M. J. Aan de Brugh
et al.

Fig. 1. Upper panel: observed total nitrate (nitric acid plus aerosol nitrate) concentration at Cabauw for May 2008. Lower panel: observed partitioning of nitrate and equilibrium by ISORROPIA for May 2008. Gaps in the graphs are caused by missing data.

[Title Page](#)[Abstract](#)[Introduction](#)[Conclusions](#)[References](#)[Tables](#)[Figures](#)[⏪](#)[⏩](#)[◀](#)[▶](#)[Back](#)[Close](#)[Full Screen / Esc](#)[Printer-friendly Version](#)[Interactive Discussion](#)

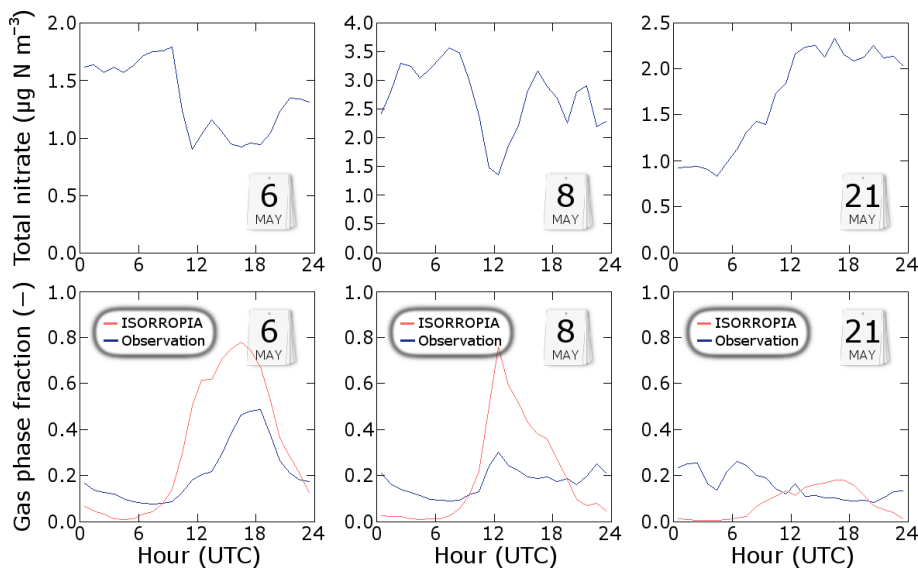
**Modelling
partitioning NH_4NO_3
in the CBL**J. M. J. Aan de Brugh
et al.

Fig. 2. Upper panels: observed total nitrate (nitric acid plus aerosol nitrate) concentration at Cabauw for 6 May (left), 8 May (middle) and 21 May (right). Lower panels: observed partitioning of nitrate and equilibrium by ISORROPIA for these days.

[Title Page](#)[Abstract](#)[Introduction](#)[Conclusions](#)[References](#)[Tables](#)[Figures](#)[◀](#)[▶](#)[◀](#)[▶](#)[Back](#)[Close](#)[Full Screen / Esc](#)[Printer-friendly Version](#)[Interactive Discussion](#)

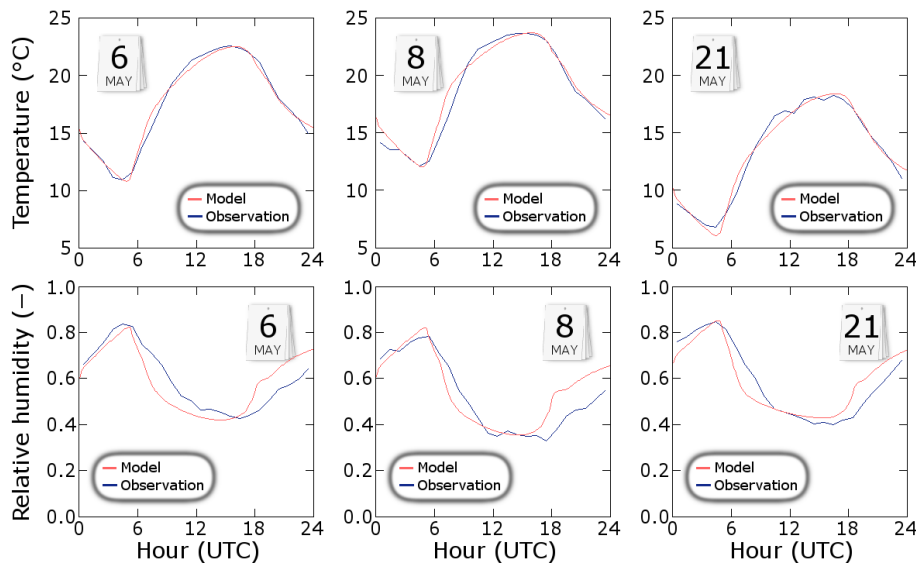
**Modelling
partitioning NH_4NO_3
in the CBL**J. M. J. Aan de Brugh
et al.

Fig. 3. Upper panels: observed and modelled surface temperature for 6 May (left), 8 May (middle) and 21 May (right). Lower panel: observed and modelled relative humidity for these days.

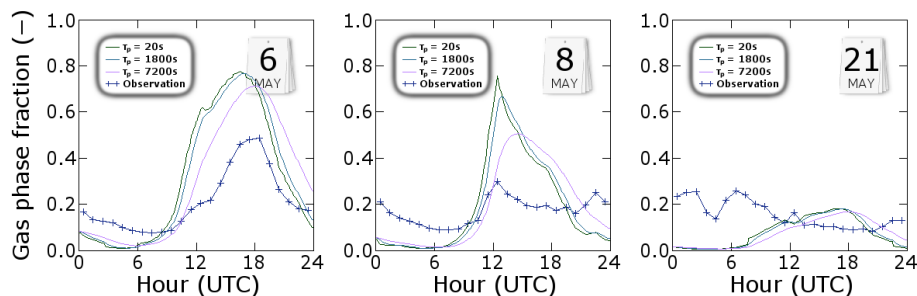
**Modelling
partitioning NH_4NO_3
in the CBL**J. M. J. Aan de Brugh
et al.

Fig. 4. Partitioning of nitrate, simulated by nudging the equilibrium calculated by ISORROPIA with different timescales, and observation, for 6 May, 8 May and 21 May.

Title Page

Abstract

Introduction

Conclusions

References

Tables

Figures

◀

▶

◀

▶

Back

Close

Full Screen / Esc

Printer-friendly Version

Interactive Discussion

Modelling partitioning NH_4NO_3 in the CBL

J. M. J. Aan de Brugh et al.

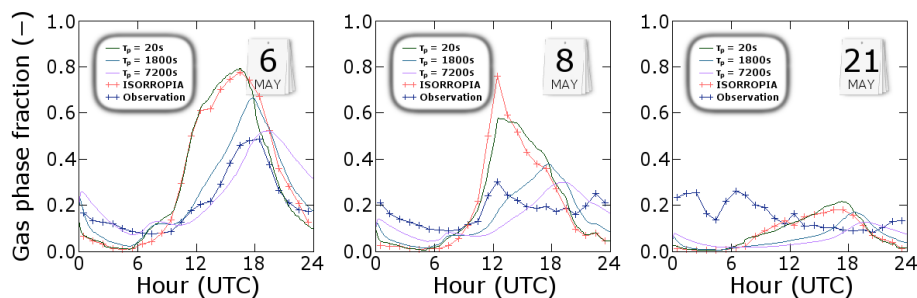


Fig. 5. Partitioning of nitrate simulated by the column model with different times scales of partitioning (τ_p), the ISORROPIA-only simulation and the observation for 6 May (left), 8 May (middle) and 21 May (right).

[Title Page](#)[Abstract](#)[Introduction](#)[Conclusions](#)[References](#)[Tables](#)[Figures](#)[⏪](#)[⏩](#)[◀](#)[▶](#)[Back](#)[Close](#)[Full Screen / Esc](#)[Printer-friendly Version](#)[Interactive Discussion](#)

Modelling partitioning NH_4NO_3 in the CBL

J. M. J. Aan de Brugh et al.

Title Page

Abstract

Introduction

Conclusions

References

Tables

Figures

◀

▶

◀

▶

Back

Close

Full Screen / Esc

Printer-friendly Version

Interactive Discussion

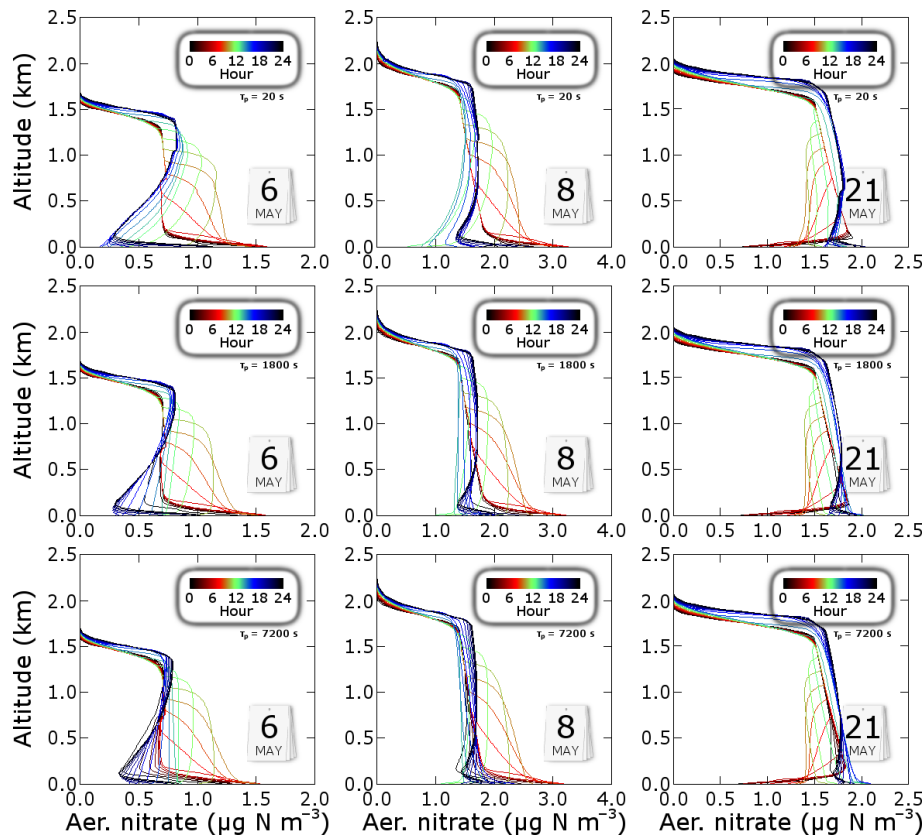


Fig. 6. Modelled aerosol nitrate profiles with partitioning timescales of 20 s (top panels), 1800 s (middle panels) and 7200 s (bottom panels), for 6 May (left), 8 May (middle) and 21 May (right). Each panel contains twenty-four profiles, one per hour, and the colour indicates the time.

Modelling partitioning NH_4NO_3 in the CBL

J. M. J. Aan de Brugh et al.

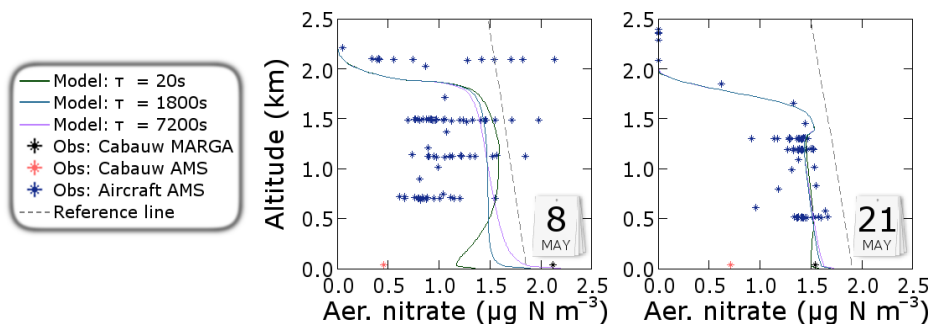


Fig. 7. Modelled aerosol nitrate profiles with partitioning timescales of 20 s, 1800 s and 7200 s, at 15:30 UTC for 8 May and at 11:30 UTC for 21 May. Airborne aerosol nitrate concentrations measured with the aerosol mass spectrometer, surface aerosol nitrate concentration measured with the aerosol mass spectrometer at Cabauw, and PM_{10} observations by the MARGA instrument at Cabauw. The reference line shows a scaled concentration of $2.0 \mu\text{g N sm}^{-3}$ (scaled to standard temperature and pressure).

[Title Page](#)
[Abstract](#)
[Introduction](#)
[Conclusions](#)
[References](#)
[Tables](#)
[Figures](#)
[◀](#)
[▶](#)
[◀](#)
[▶](#)
[Back](#)
[Close](#)
[Full Screen / Esc](#)
[Printer-friendly Version](#)
[Interactive Discussion](#)

Modelling partitioning NH_4NO_3 in the CBL

J. M. J. Aan de Brugh et al.

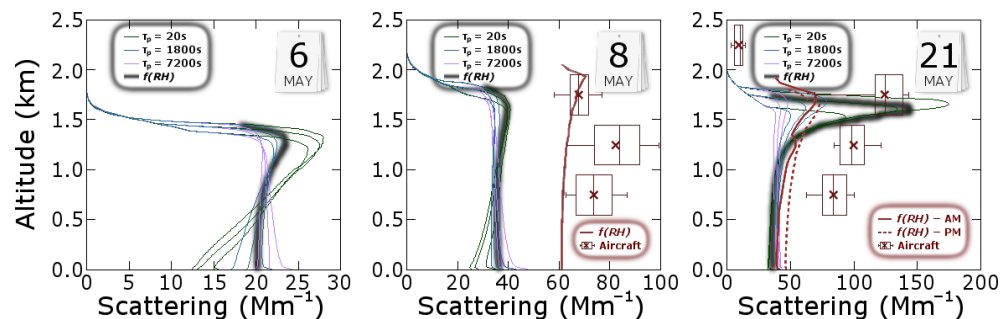


Fig. 8. Simulated scattering profiles for 6 May (left), 8 May (middle) and 21 May (right) at 550 nm wavelength. Simulations with different partitioning time scales are shown in different colours. For each simulation the profiles of 13:30 UTC, 14:30 UTC and 15:30 UTC are shown. The $f(\text{RH})$ line shows the profile without repartitioning of ammonium nitrate (constant mixing ratios), with instant equilibrium for aerosol water, at 14:30 UTC. For 8 May and 21 May, data from Morgan et al. (2010) is shown in red (550 nm wavelength), consisting of aircraft observations and $f(\text{RH})$, which is based on observed scattering coefficient at the surface and observed relative humidity with an assumed power-law relationship between relative humidity and scattering coefficient.

[Title Page](#)
[Abstract](#)
[Introduction](#)
[Conclusions](#)
[References](#)
[Tables](#)
[Figures](#)
[Back](#)
[Close](#)
[Full Screen / Esc](#)
[Printer-friendly Version](#)
[Interactive Discussion](#)

Modelling partitioning NH_4NO_3 in the CBL

J. M. J. Aan de Brugh
et al.

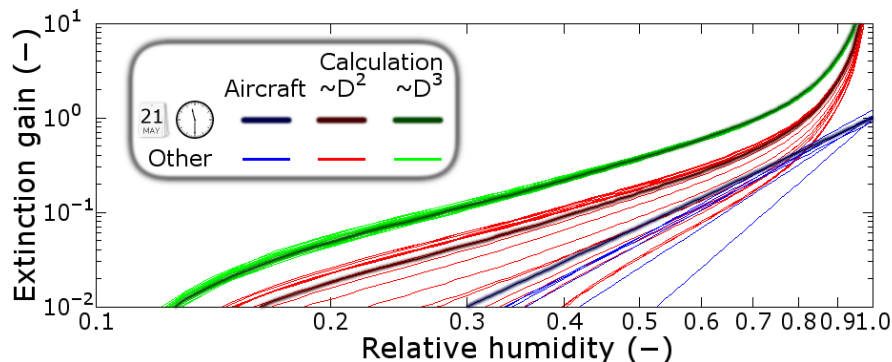


Fig. 9. Relative gain in scattering coefficient of aerosols as a function of relative humidity, without repartitioning of ammonium nitrate, with instant equilibrium for aerosol water. The calculations use observed (MARGA) surface concentrations of ammonium nitrate and ammonium sulphate and SMPS-observations at Cabauw of the aerosol size distribution, both for 21 May. One plume assumes condensation ($\sim D^2$) and the other assumes condensation ($\sim D^3$). Both plumes consist of twenty-four calculations, one per hour. The aircraft plots are power-law fits of measurements during several flights. Highlighted are the calculations for 11:30 UTC and the function fit during the flight of 21 May, which was around the same time.

[Title Page](#)
[Abstract](#)
[Introduction](#)
[Conclusions](#)
[References](#)
[Tables](#)
[Figures](#)
[⏪](#)
[⏩](#)
[◀](#)
[▶](#)
[Back](#)
[Close](#)
[Full Screen / Esc](#)
[Printer-friendly Version](#)
[Interactive Discussion](#)

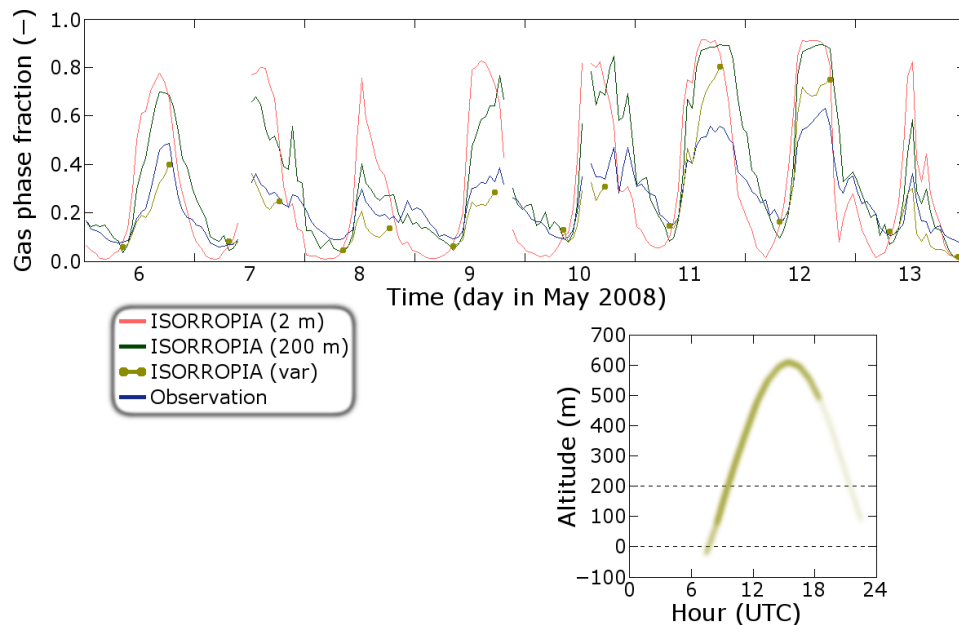
**Modelling
partitioning NH_4NO_3
in the CBL**J. M. J. Aan de Brugh
et al.

Fig. 10. Upper panel: calculated equilibrium gas phase fraction of nitrate using observations of total ammonium, total nitrate and sulphate, using temperature and relative humidity at 2 m, at 200 m, and at varying altitude (only for unstable conditions), and observed gas phase fraction of nitrate, in the period 6 May–13 May 2008. Lower panel: altitude as function of time of the day used for the varying-altitude calculation. The thickness of the line represents the number of days at which the conditions were unstable at that time.

[Title Page](#)[Abstract](#)[Introduction](#)[Conclusions](#)[References](#)[Tables](#)[Figures](#)[◀](#)[▶](#)[◀](#)[▶](#)[Back](#)[Close](#)[Full Screen / Esc](#)[Printer-friendly Version](#)[Interactive Discussion](#)