

This discussion paper is/has been under review for the journal Atmospheric Chemistry and Physics (ACP). Please refer to the corresponding final paper in ACP if available.

# Measurement of ambient aerosol hydration state at Great Smoky Mountains National Park in the Southeastern United States

N. F. Taylor<sup>1</sup>, D. R. Collins<sup>1</sup>, C. W. Spencer<sup>1</sup>, D. H. Lowenthal<sup>2</sup>, B. Zielinska<sup>2</sup>, V. Samburova<sup>2</sup>, and N. Kumar<sup>3</sup>

<sup>1</sup>Department of Atmospheric Sciences, Texas A&M University, College Station, Texas, USA

<sup>2</sup>Division of Atmospheric Sciences, Desert Research Institute, Reno, Nevada, USA

<sup>3</sup>Electric Power Research Institute, Palo Alto, California, USA

Received: 13 June 2011 – Accepted: 18 July 2011 – Published: 4 August 2011

Correspondence to: D. R. Collins (dcollins@tamu.edu)

Published by Copernicus Publications on behalf of the European Geosciences Union.

## Measurement of ambient aerosol hydration state

N. F. Taylor et al.

Title Page

Abstract

Introduction

Conclusions

References

Tables

Figures

◀

▶

◀

▶

Back

Close

Full Screen / Esc

Printer-friendly Version

Interactive Discussion



## Abstract

We present results from two field deployments of a unique tandem differential mobility analyzer (TDMA) configuration with two primary capabilities: identifying alternative stable or meta-stable ambient aerosol hydration states associated with hysteresis in aerosol hydration behavior and determining the actual Ambient hydration State (AS-TDMA). This data set is the first to fully classify the ambient hydration state of aerosols despite recognition that hydration state significantly impacts the roles of aerosols in climate, visibility and heterogeneous chemistry. The AS-TDMA was installed at a site in eastern Tennessee on the border of Great Smoky Mountains National Park for projects during the summer of 2006 and winter of 2007–2008. During the summer, 12 % of the aerosols sampled in continuous AS-TDMA measurements were found to possess two possible hydration states under ambient conditions. In every case, the more hydrated of the possible states was occupied. The remaining 88 % did not possess multiple possible states. In continuous measurements during the winter, 49 % of the aerosols sampled possessed two possible ambient hydration states; the remainder possessed only one. Of those aerosols with multiple possible ambient hydration states, 65 % occupied the more hydrated state; 35 % occupied the less hydrated state. This seasonal contrast is supported by differences in the fine particulate ( $PM_{2.5}$ ) composition and ambient RH as measured during the two study periods. In addition to seasonal summaries, this work includes case studies depicting the variation of hydration state with changing atmospheric conditions.

## 1 Introduction

### 1.1 Background

Atmospheric particulates frequently exhibit transitions between solid and aqueous phases driven by changes in relative humidity. Often, these changes in hydration state

ACPD

11, 21877–21933, 2011

## Measurement of ambient aerosol hydration state

N. F. Taylor et al.

Title Page

Abstract

Introduction

Conclusions

References

Tables

Figures

⏪

⏩

◀

▶

Back

Close

Full Screen / Esc

Printer-friendly Version

Interactive Discussion



are irreversible and display hysteresis due to kinetic limitations on the formation of ordered phases (Tang and Munkelwitz, 1984). For example, ammonium sulfate deliquesces at ~80 % RH but effloresces at ~40 % RH. Between these critical relative humidities, the RH domain of hysteresis, an ammonium sulfate aerosol may occupy one of two hydration states, meta-stable and supersaturated solution or anhydrous crystal, dependent on its RH history. This behavior is illustrated in Fig. 1, which depicts change in particle diameter due to water uptake for an initially crystalline ammonium sulfate aerosol and water loss for an initially aqueous, solution aerosol.

Similar to the idealized ammonium sulfate aerosol, ambient boundary layer aerosol have been observed to display occasional hysteresis at a variety of locations by nephelometry (Brink et al., 1996; Carrico et al., 2000; Carrico et al., 2003; Charlson et al., 1974; Day and Malm, 2001; Dougle et al., 1998; Rood et al., 1987; Shaw and Rood, 1990; Swietlicki et al., 2000; Wang et al., 2007) and Tandem Differential Mobility Analyzer (TDMA) measurements (Berg et al., 1998; Gasparini et al., 2006). Hysteresis is not a universal characteristic of ambient aerosol and not consistently detected (Fierz-Schmidhauser et al., 2010; Pitchford and McMurry, 1994; Rissler et al., 2006; Sjogren et al., 2008; Zhou et al., 2001). This is anticipated by laboratory studies of hysteretic aerosol components. In particular, the hydration behavior of sulfate/nitrate/ammonium/proton (SNA) mixtures has been well established and is marked by decreasing critical relative humidities of deliquescence and efflorescence with increasing acidity (Martin, 2000). When no ammonium is present, these mixtures display continuous hygroscopic growth and exhibit no phase transitions. Further, in situ measurements of hysteresis often report truncated hysteresis loops and gradual phase transitions with partial hydration of the lower hydration state (Berg et al., 1998). This too is consistent with laboratory studies of various internal mixtures of both inorganic and organic species whose findings indicate complex interactions affecting the RH and character of phase transitions (Brooks et al., 2002; Ciobanu et al., 2010; Hansson et al., 1998; Martin et al., 2001; Tang et al., 1978).

**Measurement of ambient aerosol hydration state**

N. F. Taylor et al.

Title Page

Abstract

Introduction

Conclusions

References

Tables

Figures

◀

▶

◀

▶

Back

Close

Full Screen / Esc

Printer-friendly Version

Interactive Discussion



**Measurement of  
ambient aerosol  
hydration state**

N. F. Taylor et al.

Title Page

Abstract

Introduction

Conclusions

References

Tables

Figures

◀

▶

◀

▶

Back

Close

Full Screen / Esc

Printer-friendly Version

Interactive Discussion

As aerosol properties may differ greatly between hydration states, knowledge of hydration state of ambient aerosols is critical to understanding their atmospheric roles. In the common case of ammonium sulfate, a meta-stable, aqueous aerosol near the deliquescence RH may feature over 3 times the volume and light scattering per solute mass of the alternative crystalline state. This greatly affects the influence of ammonium sulfate on the global radiation budget as well as local visibility. An expansive treatment of the radiative effects of SNA hysteresis globally was done by Martin et al. (2004) with follow up by Wang et al. (2008a). These studies utilized global 3-D chemical transport models to predict SNA loading, degree of neutralization, extent of hysteresis, and the effect on the global radiation budget of assuming the least hydrated and most hydrated aerosol hydration states. The first of these studies made no attempt to predict the hydration state, but only compared the result of each assumption. They concluded that an assumption of the lower hydration state would produce a 25 % reduction in negative radiative forcing estimate for global SNA versus an assumed aqueous hydration state. The second work, by Wang et al., augmented a similar methodology to include model based prediction of hydration state. Unfortunately, it is difficult to gauge the accuracy of this and other modeling approaches (Colberg et al., 2002; Grant et al., 1999; Haywood et al., 1997; Wang et al., 2008b) as limited measurements have been made fully characterizing ambient aerosol hydration state apart from the work of Santarpia et al. (2004) – the precursor to the present endeavor (Swietlicki et al., 2008).

A technique for partial characterization of ambient hydration state using nephelometers was developed by Rood et al. (1989). It compares the scattering by the ambient aerosol to the scattering by the aerosol after a conditioning process consisting of first heating then restoring to ambient temperature. The heating dries the aerosol, forcing efflorescence. If the aerosol initially contains hysteretic particles in a more hydrated state, this process should result in a loss of particulate water and a reduction in scattering in comparison with the unprocessed, ambient aerosol. This system, then, detects the existence of meta-stable water. These results could be combined with RH scanning nephelometer results to infer the existence of less hydrated, hysteretic aerosol. This

treatment, however, does not resolve size or mixing characteristics.

The current work develops the methodology of Santarpia et al. (2004), which augmented and modified the conditioning process used by Rood et al. (1989) to positively determine the existence of both aerosol in a most hydrated, meta-stable state and aerosol in a less hydrated state. In addition to this augmentation, Santarpia et al. utilized a modified TDMA system instead of nephelometry. This system is termed an Ambient State (AS)-TDMA and has several advantages to nephelometers, including higher resolution and sensitivity, size resolving operation and less harsh RH conditioning processes. To begin to answer the broad need for knowledge of hydration state the results from a pair of field deployments of an AS-TDMA are reported here.

## 1.2 Study details

This paper reports results from a succession of two measurement campaigns conducted on the boundary of Great Smoky Mountains National Park in Tennessee. To retrieve seasonal variation, the first took place during the summer of 2006 (20 July–30 August) and the second in the winter of 2007–2008 (1 November–10 February). The measurements were made at the Look Rock site, which is located on a ridge overlooking the northwest boundary of the park. This site is approximately 30 miles south of Knoxville, TN. In addition to the measurements described here, the site houses both an Interagency Monitoring of PROtected Visual Environment (IMPROVE) station and an air quality station operated by the Tennessee Valley Authority. It has been the location of several intensive studies including the Southeastern Aerosol Visibility Study (Day et al., 2001). The site is typical of the southeastern region of the US, known to possess high loading of sulfate aerosol resulting in significant degradation of visibility. Measurements were conducted from the roof of a temporary building, positioned near both the IMPROVE and TVA facilities, that housed the bulk of the instrumentation.

These studies were conducted as part of a larger campaign aimed at evaluating several facets of the IMPROVE program (Lowenthal et al., 2009). That project centers on four areas related to conventions used within the IMPROVE program to relate

### Measurement of ambient aerosol hydration state

N. F. Taylor et al.

Title Page

Abstract

Introduction

Conclusions

References

Tables

Figures



Back

Close

Full Screen / Esc

Printer-friendly Version

Interactive Discussion



## Measurement of ambient aerosol hydration state

N. F. Taylor et al.

Title Page

Abstract

Introduction

Conclusions

References

Tables

Figures

◀

▶

◀

▶

Back

Close

Full Screen / Esc

Printer-friendly Version

Interactive Discussion



filter-based composition measurements to light extinction: organic aerosol hygroscopicity; the ratio of organic aerosol mass to organic carbon mass; the attribution of fine aerosol mass into size distributions as necessary to predict optical effects; and aerosol ambient hydration state, necessary to estimate the visibility impacts of sulfate and nitrate mass (Pitchford et al., 2007). The AS-TDMA was deployed to investigate the last of these. Aside from this issue, however, the results presented here have broader implications for the understanding of the atmospheric roles of aerosol.

While the primary instrument described in this report is the AS-TDMA, two other sources of information will be used to support the findings. The first is composition information drawn from the other elements of the larger campaign. These results were derived from the analysis of daily, high-volume and medium-volume PM<sub>2.5</sub> (particles with diameters smaller than 2.5 μm) filter samples (Lowenthal et al., 2009). The other source was an ancillary H-TDMA (hygroscopic-TDMA) system operated to complement the AS-TDMA.

## 2 Methodology

The measurement of ambient hydration state was achieved with a three part experimental process utilizing a modified TDMA. The technique is elaborated here as follows: First, the AS-TDMA instrument is described, especially as it deviates from the conventional TDMA configuration. Next is illustrated how the configuration translates in operation to the experimental procedure for the determination of hydration state. Meta-experimental parameters such as measurement frequency are discussed following the operation illustration. Finally, the procedures used to refine the AS-TDMA results are considered.

## 2.1 AS-TDMA Instrumentation

The AS-TDMA shares operational principles of TDMA systems: determining the effects on particle size of some process such as heating or humidifying. To measure hydration state, the AS-TDMA retrieves the different effects on the size of an ambient aerosol of three distinct processes: a Deliquescence Forcing (DF), an Efflorescence Forcing (EF) and a Drying process. The modifications necessary to execute these processes on an ambient aerosol are significant but do not involve alterations of the essential TDMA elements. A very brief review of several salient features of TDMA is included in this section. Further, while the components and configuration involved in the modification are described, no corresponding description is given for the non-unique portions of the AS-TDMA instrument. For details both on TDMA concepts and the specific components, operation, performance and control of the TDMA system modified to form the AS-TDMA, the reader is referred to Gasparini et al. (2004).

All TDMA systems rely on two electrostatic classifiers, often called DMAs, which each acts as a controllable “band-pass” filter on particle electrical mobility. While mobility is determined by both size and morphology, it is convenient to refer to mobility in terms of that of a sphere. Thus, in this paper all mention of size with respect to DMAs refers to the size of a sphere of equivalent mobility. TDMA utilize the two classifiers in series. The first classifier is controlled to transmit particles with a fixed, constant diameter from the aerosol being sampled. The resultant, roughly monodisperse aerosol is then subject to a process (e.g., humidification, heating) that could modify the size of the particles. This creates an aerosol in which size reflects responsiveness to the inter-classifier process (e.g., hygroscopicity, volatility). This final size distribution is captured by the second classifier, operating in a scanning configuration, in conjunction with a condensation particle counter (CPC). The counts rates recorded by the CPC are inverted to retrieve the size distribution.

There are two primary features of the AS-TDMA modification: The first electrostatic classifier is operated to preserve ambient RH and temperature and a series of three

### Measurement of ambient aerosol hydration state

N. F. Taylor et al.

Title Page

Abstract

Introduction

Conclusions

References

Tables

Figures



Back

Close

Full Screen / Esc

Printer-friendly Version

Interactive Discussion



measurements with different inter-classifier RH conditioning processes are employed. This section describes the implementation of these features and their utility in retrieving ambient hydration state. A schematic of the implementation is provided at the top of Fig. 2.

As illustrated in the schematic, the first classifier is located in the ambient environment. In addition, care is taken to ensure that it operates at ambient RH and temperature to remove perturbations in ambient conditions before the aerosol has been transmitted through the classifier column. The object being to select a monodisperse aerosol based on ambient size and *especially* ambient hydration state. This is a significant difference from common TDMA and is necessary to obtain information about the ambient condition of the aerosol. For this study, the external unit was located on the roof of the climate controlled trailer housing the remaining instrumentation. The unit was shrouded with a heavy, white cover to guard against weather and direct solar heating. In addition, a high volume fan was used to circulate ambient air rapidly around the instrument components for the purpose of enhancing temperature equilibration. Immediately downstream of the classifier, a Vaisala HMM-22D RH probe, also maintained at ambient conditions, captures the RH of the aerosol sample flow. This, the “Ambient RH” probe, and other Vaisala RH probes are shown in grey in the schematic. At this point the aerosol is directed inside and into a temperature controlled enclosure (29°C) in order to facilitate the stable manipulations of RH that constitute the inter-classifier processes.

The middle portion of the schematic describes the three alternate configurations that achieve the three inter-classifier processes used to resolve ambient hydration states. The individual processes will be referred to as the Deliquescence Forcing (DF) process, the Efflorescence Forcing (EF) process and the Drying process. They are depicted in red, green and blue, respectively, in the schematic and in the balance of the paper.

Each of the processes consists of a different sequence of RH manipulation conducted using variously configured Perma Pure Nafion PD-07018T moisture exchange tube bundles. The first, moving from left to right in the schematic, is configured to dry

## Measurement of ambient aerosol hydration state

N. F. Taylor et al.

Title Page

Abstract

Introduction

Conclusions

References

Tables

Figures

◀

▶

◀

▶

Back

Close

Full Screen / Esc

Printer-friendly Version

Interactive Discussion





**Measurement of ambient aerosol hydration state**

N. F. Taylor et al.

[Title Page](#)[Abstract](#)[Introduction](#)[Conclusions](#)[References](#)[Tables](#)[Figures](#)[⏪](#)[⏩](#)[◀](#)[▶](#)[Back](#)[Close](#)[Full Screen / Esc](#)[Printer-friendly Version](#)[Interactive Discussion](#)

the aerosol with its purge flow held at high vacuum. The “High/Low RH” probe measures the extent of drying by this Nafion bundle during the EF and Drying processes. Drying varied narrowly during this study and the RH of the aerosol sample flow exiting this exchange was consistently between 8 and 15% RH. The second moisture exchange is configured to hydrate the aerosol sample flow by maintaining very high RH (>95%) in the purge flow. It achieved consistent sample flow humidification to >85% RH, measured by the “High/Low RH” probe during DF measurements. The final Nafion bundle is configured to be controllable. The purge flow contains a high mixing ratio of water, but the purge pressure (vacuum) is controllable. This allows the vapor pressure differential to vary and with it the moisture flux between the purge and sample flow. The “Controlled RH” probe measures the RH of the sample flow exiting this exchange. The RH produced by this Nafion bundle is controlled to mirror the ambient RH measured by the “Ambient RH” probe using a tuned PID (proportional/integral/derivative) routine. Typical displays of its performance are included in Figs. 8 and 9 in the results section, where the average retrieved Ambient RH and Controlled RH values for a series of measurements are shown. The averages depicted are for 180 s intervals corresponding to the duration of a single measurement.

The three different inter-classifier processes are produced by a series of 3-way valves that determine which Nafion bundles the sample flow is directed through. Each of the processes begins with the initial drying Nafion bundle. This drying bundle is placed immediately within the housing trailer. Apart from its role in the processes, it serves to prevent condensation in the tubing segment exposed to the low (air-conditioned) temperature in the trailer that conducts the aerosol into the internal and finely-temperature-controlled instrument enclosure. From this point, the RH manipulations of the processes diverge. The path followed during the DF process is shown in red. It conditions the aerosol to a high RH and then restores the RH to the ambient level. This process is intended to resolve the presence of ambient particles exhibiting hysteresis and occupying a less hydrated state. The EF process, shown in green, only returns the dried sample flow to its ambient RH. The EF process resolves the presence

of particles in a more hydrated state. The Drying process, shown in blue, leaves the aerosol sample flow at low RH. This produces a final aerosol stream in which particle size reduction from the size selected by the first classifier reflects the amount of water initially present in the particles.

5 The remainder of the AS-TDMA is configured in the standard fashion to retrieve the resultant size distributions of each process. Beyond the two primary modifications here discussed, the AS-TDMA differs from the Gasparini et al. (2004) TDMA cited above in only two other significant aspects. In conventional H-TDMAs, to maximize separation of size distribution modes comprised of populations of particles having similar hygroscopicities, the inter-classifier RH is typically maintained at around 90%. In contrast, the effective RH in the AS-TDMA is not prescribed and ranged from 40 to 90% for the measurements reported here. To partially compensate for the resulting compression of size modes, a higher than usual 13:1 sheath to aerosol flow ratio was employed in the DMAs. Further, the CPC in the AS-TDMA was a TSI model 3762 capable of handling higher sample flow rates and producing better counting statistics than that used by Gasparini et al. As a final note on configuration, higher count rates achieved through the use of high flow DMAs (HF-DMAs; Stolzenburg et al., 1998) in both the AS- and Gasparini TDMA also aided production of narrow modes that were more easily identified and isolated.

## 20 **2.2 AS-TDMA experimental process and operation**

The following illustration describes the operation of the AS-TDMA on a hypothetical aerosol with given hydration characteristics; explicitly covering the effects on the aerosol particles as they are transmitted through the three processes and the form and type of result each generates. In addition, consideration is given to what response departures from the hypothetical aerosol would produce in the results to fully establish how AS-TDMA experimental processes resolve hydration state. This subsection concludes with meta-experimental parameters such as measurement frequency and size.

### **Measurement of ambient aerosol hydration state**

N. F. Taylor et al.

Title Page

Abstract

Introduction

Conclusions

References

Tables

Figures

◀

▶

◀

▶

Back

Close

Full Screen / Esc

Printer-friendly Version

Interactive Discussion



## Measurement of ambient aerosol hydration state

N. F. Taylor et al.

Title Page

Abstract

Introduction

Conclusions

References

Tables

Figures

◀

▶

◀

▶

Back

Close

Full Screen / Esc

Printer-friendly Version

Interactive Discussion



The following descriptions refer especially to the portion of Fig. 2 below the instrument schematic, which variously depicts the application of the three processes to an ideal, internally mixed aerosol. This aerosol has the hydration characteristics illustrated in the upper left, with an efflorescence RH of 34 % and deliquescence RH of 72 %. The abscissa describes the ratio of the diameter of the particles to the initial, ambient diameter selected by the first classifier. The aerosol is depicted as initially in its most hydrated state at an ambient RH of 65 %. This is illustrated by the large grey dot at the intersection of the ambient RH and unity size ratio lines. The arrows below this chart describe the RH to which the aerosol particles are exposed during each of the three processes. The corresponding response in the size of the aerosol particles is traced along the hydration profile above. In the upper right, the resultant normalized size distribution produced by each process is shown, reflecting the distributed response of the instrument to a uniform aerosol. A set of measurements made during this study is shown in the lower right to illustrate several analysis steps. Shown along the right margin are symbols illustrating a compact method of describing the size distributions.

Each of the three processes begins with an approximately monodisperse aerosol stream supplied by the first classifier. This stream is directed into the indoor portion of the instrument and passed through the drying Nafion bundle, as indicated in the instrument schematic. As the monodisperse aerosol passes through this Nafion, the RH of the carrier gas decreases to a low RH (~15 %) and most of the particulate water evaporates. This is depicted in the upper left hand portion of the illustration by the three parallel sets of arrows that trace the growth curve away from the initial ambient size and RH, the point marked by a grey dot, downward and to the left. In the lower left portion of the illustration, the first arrow in each color depicts the change in RH and is labeled “Drying Nafion Bundle” to relate what element in the instrumentation effects the change. For the hypothetical aerosol, this transition includes the efflorescence of the aerosol. As the hypothetical aerosol is dried to levels below its efflorescence point, the illustration depicts it losing additional water. The aerosol size at this point reflects how much water it initially contained. If the aerosol had initially been in its least hydrated

state, the reduction in size would have been less dramatic. If the initial monodisperse aerosol had contained an external mixture of particles containing different amounts of water, it would become polydisperse with drying. At this point, the three processes diverge and the now dry aerosol stream is diverted according to each program of RH manipulation producing the following results:

Deliquescence Forcing (DF): this process follows the path in the schematic and the illustrated features shown in red. It resolves the presence of ambient hysteretic aerosol in less hydrated states. During this process, the aerosol stream is diverted by the first 3-way valve into the hydrating Nafion bundle. This increases the RH of the aerosol to at least 85%. The effect on the illustrated aerosol is traced by the red arrows away from the low RH and small particle size, along the least hydrated branch of the growth curve until the aerosol particles deliquesce at 72% RH. At RH levels above the deliquescence point, only one hydration state exists and the aerosol particles continue to take up water until high RH (>85%) is achieved. Because this RH is above the deliquescence point, the effects of the initial drying and efflorescence are removed. Next, the aerosol enters the controlled Nafion tube bundle, which is configured to restore ambient RH levels. Thus, the final red arrow in the process depicts the aerosol being restored to ambient RH. This causes the aerosol particles to lose water as they are exposed to decreasing RH. As is depicted in the upper right, the aerosol is restored to its initial condition and its particles to their initial size. The resultant size distribution recorded is shown to the right. It is centered at a unity ratio of final to initial size. The breadth of the distribution reflects the actual range of sizes in the approximately monodisperse aerosol transmitted by the first classifier. If the particles had instead been initially in their least hydrated state, the RH manipulations in this process would have forced them to deliquesce, leaving the particles larger and in their most hydrated state. If the aerosol did not exhibit hysteresis this process would not alter it.

## Measurement of ambient aerosol hydration state

N. F. Taylor et al.

Title Page

Abstract

Introduction

Conclusions

References

Tables

Figures

◀

▶

◀

▶

Back

Close

Full Screen / Esc

Printer-friendly Version

Interactive Discussion



**Measurement of ambient aerosol hydration state**

N. F. Taylor et al.

Title Page

Abstract

Introduction

Conclusions

References

Tables

Figures



Back

Close

Full Screen / Esc

Printer-friendly Version

Interactive Discussion



Efflorescence Forcing (EF): This process follows the green path through the instrument and resolves the presence of hysteretic ambient aerosol in a more hydrated state. During this process, the aerosol bypasses the hydrating Nafion bundle. The controlled Nafion is again operated to mirror the ambient RH. As traced on the growth curve, the result of this process is to move the aerosol from its most hydrated state to its less hydrated state, forcing its efflorescence. If the aerosol had been initially in the less hydrated state, or if it did not exhibit hysteretic phase transitions, there would be no change in the size of its particles. For the case illustrated, the reduction in size is shown in the resultant size distribution on the right.

Drying: In this final process the blue path is followed and both the hydrating and controlled Nafion are bypassed. This preserves the dry state of the aerosol. The growth curve depicts a reduction in size greater for this process than that caused by the EF process. This results in the size distribution being centered about a lower ratio of final to initial diameter than for the EF process. If the aerosol had been initially in its least hydrated state then the decrease in size would be reduced. If the aerosol did not display hysteretic phase changes, the aerosol would still display water loss, dependent on the aerosol hygroscopicity.

From this illustration, the purpose and use of each process should be mostly apparent: The growth of aerosol particles caused by the DF process implies that the aerosol is hysteretic and in a less hydrated state initially. Similarly, a reduction in aerosol particle size caused by the EF process indicates that the aerosol is hysteretic and in a more hydrated state initially. The Drying process determines the ambient water content of particles, the use of which is elaborated in the next subsection. The comparative more- or less-hydrated state will be used henceforth to reference hysteretic aerosol hydration states detected by the EF and DF processes, respectively. This convention is used in deference to the plausibility of intermediate hydration states and multiple crystalline forms (Mifflin et al., 2009; Rosenoern et al., 2008). Further, this reserves the possibility

of water content in less hydrated states.

During this study each of the three process measurements was conducted for five ambient sizes: 0.025, 0.05, 0.1, 0.2, and 0.4  $\mu\text{m}$ . In operation, a measurement for every size was conducted using each process before transition to the next. The DF process was conducted first, the EF second and the Drying process last. The time resolution of these measurements varied based on the length of each individual measurement, which was varied between 3 and 5 min, as CPC count rates allowed. An additional 100 s was required between each size measured for the change in size selected by the first classifier to penetrate and achieve steady state in the remainder of the instrument. The transitions between the processes required a period of equilibration as the controlled Nafion bundle adjusted to changes in the RH of the sample flow and for changes in RH to permeate the second classifier. It was determined that 300 s was sufficient for the transitions from DF to EF and from EF to Drying processes. For the transition from Drying to DF process, to begin the next measurement sequence, 900 s was required. In sum, each full measurement cycle took 120–150 min.

Measurements were continuously conducted at this frequency except when instrument limitations forced temporary suspension of operation. These limitations were threefold. First, to avoid condensation within the external classifier column, measurements were suspended when ambient RH was higher than 90%. Second, the controlled Nafion bundle produced a minimum RH of approximately 25–30%. Therefore measurements were also suspended below that threshold. Finally, to avoid frost build up, measurements were suspended, the circulation fan in the external unit was switched off and a small heater was powered on when ambient temperature fell below 0°C. The effect of these limitations on measurement coverage is illustrated in Fig. 3. The most common cause for measurement suspension was high RH and a corresponding depression in measurement frequency at night is evident in the charts for both studies.

**Measurement of ambient aerosol hydration state**

N. F. Taylor et al.

Title Page

Abstract

Introduction

Conclusions

References

Tables

Figures



Back

Close

Full Screen / Esc

Printer-friendly Version

Interactive Discussion



## 2.3 AS-TDMA data treatment

AS-TDMA results take the form of size distributions, as illustrated on the right side of Fig. 2. While this form is adequate for simple evaluations, additional procedures were applied to refine the results and to facilitate more complicated analysis. These are described in the elements of this sub-section titled Log-Normal Curve Fits, Mode Correlation, Hygroscopic Growth Model Use, and Qualification of Hysteresis and Scan Offset. A final element covers AS-TDMA calibration.

### 2.3.1 Log-normal curve fit

The resultant size distributions were produced by inverting the response of the CPC with respect to the final classifier only. This causes the signal from the initial, ambient classifier to remain. This signal is the natural, roughly triangular distribution actually transmitted. Thus, when no change is effected by the inter-classifier processes, the final size distribution accurately depicts this signal. Some groups using TDMA have utilized this signal as a kernel for a second inversion (Gysel et al., 2009); however, additional sources of noise and signal breadth make this technique less applicable to AS-TDMA results. One source of mode broadening is compositional heterogeneity, which causes a blurred response to inter-classifier processes. Also, occasional deviations between ambient and controlled RH levels can generate additional broadening and variation in the location of the effective “no change” size. For these reasons it is difficult to fully invert the AS-TDMA results using traditional methods. Yet, because the size response of the AS-TDMA processes are often small (roughly analogous to classic hygroscopicity TDMA measurements at low RH) and often involve responses in minor populations of the aerosol, it is imperative to refine the results as much as possible.

To this end, a constrained Levenburg-Marquardt optimization routine was used to fit the data with the sum of up to 4 log-normal modes. An application of this technique is demonstrated in the lower left of Fig. 2 for a set of measurements made during the winter portion of this study. Each log-normal mode is characterized by its relative

## Measurement of ambient aerosol hydration state

N. F. Taylor et al.

Title Page

Abstract

Introduction

Conclusions

References

Tables

Figures

◀

▶

◀

▶

Back

Close

Full Screen / Esc

Printer-friendly Version

Interactive Discussion



contribution to total concentration, geometric mean diameter and geometric standard deviation. In effect, this method serves as a pseudo-inversion. Each mode ideally captures the response (both broadening and translation) of various fractions of the initial kernel distribution to the inter-classifier processes. The adaptive nature of this treatment to mode location and breadth make it a good choice for AS-TDMA measurements. Inevitably, there are difficulties that arise from poorly resolved modes. In these cases, the optimization results can be non-unique and unstable. The optimization routine used may also be sensitive to choices of initial guess and this becomes truer in these cases. However, by utilizing systematic and well-tuned heuristics for the initial guesses and the constraints on the mode parameters these effects can be reduced. Non-ideal cases were observed only occasionally; more frequently, the modes were clearly resolved. Overall, though this technique is not rigorous, its systematic application provided consistent results. These results are also ideal for application of the experimental principles of the AS-TDMA. For the DF and EF processes, the criteria of size change can be applied to the mean size of each mode in comparison to the mean size selected by the first classifier. Additional steps are needed to utilize the Drying process results, but they are greatly facilitated by this characterization of the data.

A convenient manner of displaying these log-normal characterizations is illustrated to the far left in Fig. 2. There, each mode captured by a log-normal curve is depicted as a single symbol. The size of the circular portion reflects the particle concentration contained in that mode relative to the concentration described by the total size distribution. The vertical position of the symbol indicates geometric mean diameter (or size ratio). Lastly, the length of the error bars indicates the breadth of the mode and is one geometric standard deviation. This convention is used occasionally in the results section.

### 2.3.2 Mode correlation

The Drying process measurements are made to recover the total amount of water in both the ambient hydration state and final, processed hydration states detected in the

## Measurement of ambient aerosol hydration state

N. F. Taylor et al.

Title Page

Abstract

Introduction

Conclusions

References

Tables

Figures



Back

Close

Full Screen / Esc

Printer-friendly Version

Interactive Discussion





**Measurement of ambient aerosol hydration state**

N. F. Taylor et al.

Title Page

Abstract

Introduction

Conclusions

References

Tables

Figures



Back

Close

Full Screen / Esc

Printer-friendly Version

Interactive Discussion



DF and EF measurements. To apply the Drying process results, the modes resolved in the DF and EF measurements must be correlated to the modes in the Drying process results that contain those fractions of the aerosol. Moreover, to repair deviations in the synchronization of the ambient and controlled RH, it is useful to correlate the modes detected in the EF and DF processes. The final product of these mode correlations is a tabulation of all the distinct fractions of the aerosol that are resolved by the three processes. The difficulty achieving this objective ranges from trivial when the aerosol is internally mixed (and therefore characterized by single modes) to impossible when too many modes are resolved in each scan. To clarify the nature of this objective and to motivate the routine and simplifications finally used to approximate it, the correlation process for the measurements depicted in the lower right of Fig. 2 is elaborated.

The correlation of modes in DF and EF results is simple. Any fraction of the ambient aerosol that changes size during one of these processes is assumed to not change size during the other, i.e., a particle does not simultaneously have both a more- and less-hydrated possible state. This requires the assumptions that there are no intermediate ambient hydration states and that no change in the hydration state occurs between the two process measurements. In the results depicted in the lower right of Fig. 2, the DF process resolves a fraction of the aerosol initially in a less hydrated state. Because it is initially less hydrated, that fraction is assumed to be included in the mode that does not change size in the EF process results. Similarly, the fraction found to be initially in a more hydrated state by the EF process is assumed to contribute to the mode at unity size ratio in the DF results. Note that only a subset of the aerosol displayed hysteresis. Less than half of the aerosol is in each of the hysteretic modes, implying a fraction of non-hysteretic aerosol in the modes at unity size ratio in both the DF and EF results. In this way the EF and DF results together resolve both the hysteretic fractions and the total non-hysteretic fraction.

The further correlation to the Drying process results is more problematic. The first two processes have a clear relationship that can be used to compare them. This is not the case with the Drying process. Between it and the DF and EF processes only

**Measurement of ambient aerosol hydration state**

N. F. Taylor et al.

Title Page

Abstract

Introduction

Conclusions

References

Tables

Figures



Back

Close

Full Screen / Esc

Printer-friendly Version

Interactive Discussion



a weak and often inconclusive relation exists, consisting of a system of constraints on possible water content and the conservation of total aerosol fraction between the three measurements. Consider the case above. The most concrete constraint exists for locating the fraction known to be initially in a more hydrated state. Those particles are known to contain at least the amount of water that was lost as they transitioned to their less hydrated state in the EF process. Thus, that fraction is known to correlate to a fraction in the Drying process results that has lost at least so much water. In the case above, there is a mode that fills this criterion. Locating the aerosol fraction shown to be initially in a less hydrated state by the DF process is less constrained. During the summer measurement period, the amount of water retained in the less hydrated state of hysteretic aerosol was occasionally near 50 % of the amount contained in the most hydrated state. Yet no indication of the residual water content is given by the EF and DF process results alone. In the case above, some headway can be made by assuming the hydration characteristics of the two hysteretic fractions are similar, hydration state aside. This would imply little residual water content in the less hydrated state because the loss of water by efflorescence and by drying is similar for the fraction of the aerosol initially in its most hydrated state. This would also determine the aerosol fraction resolved by the DF process as hysteretic and in a less hydrated state to be in the Drying process mode that shrinks less upon drying. These assumptions are strengthened by the fact that the aerosol fraction in the Drying process mode with the greatest reduction in size is almost entirely accounted for by the most hydrated ambient aerosol fraction resolved in the EF process measurement. Therefore, that Drying process mode could not contain the entire ambient *less* hydrated hysteretic aerosol fraction. In this way, the conservation of aerosol fraction can be used to apportion the remaining non-hysteretic population resolved by the EF and DF process comparison. Indeed, for this fraction of the aerosol no other constraint exists.

The above case approaches the limit of reasonable correlation. If an additional mode had been resolved in the Drying process results (a distinct possibility, as the non-hysteretic fraction is unconstrained by the EF and DF results) the apportionment might

**Measurement of ambient aerosol hydration state**

N. F. Taylor et al.

Title Page

Abstract

Introduction

Conclusions

References

Tables

Figures



Back

Close

Full Screen / Esc

Printer-friendly Version

Interactive Discussion



have been impossible. However, the vast majority of cases were readily correlated, consisting of two or fewer modes from each measurement. In addition, the primary objective is to determine the dry size of the modes resolved in the EF and DF scans. A multiplicity of modes in the Drying process results may depict a variety of externally mixed aerosol types, but these do not necessarily concern this study. Thus, to retrieve an approximation of the dry size in cases where the explicit correlation of aerosol fractions is impossible, the Drying scans were constrained to be fit by at most two major modes. The correlation to these Drying process modes assumed that all hysteretic particles in the most hydrated state were accounted for by the Drying process mode that contained the most water initially, and the ambient less hydrated hysteretic aerosol fraction was entirely contained in the Drying process mode that contained the least water. While this treatment is imperfect, the error it introduces is limited. Also it converges with the explicit consideration described above, only introducing error in the minority of cases that contain intractably many modes.

These correlations result in a set of descriptions of the various resolved fractions. For each fraction, the characteristic dry size, the ambient size, the size of the most hydrated state it could occupy, and the size of the least hydrated state it could occupy are known. The ambient hydration state can be determined by comparisons between known hydration state sizes and the ambient size. The water content of each state is known by comparison with the dry size. The resolved and correlated populations thus make the ideal result of the AS-TDMA operation, allowing full and easy comparison of the three measurements.

### 2.3.3 Hygroscopic growth model use

It should be recognized that ambient RH did vary sufficiently for the RH during each of the three processes in a measurement cycle to be significantly different. This inconsistency is partially removed by using a hygroscopic growth model to predict from the retrieved values the equivalent response at a standard RH. This treatment has the advantage that it also partially removes the effect of discrepancies between the ambient

---

**Measurement of ambient aerosol hydration state**N. F. Taylor et al.

---

[Title Page](#)[Abstract](#)[Introduction](#)[Conclusions](#)[References](#)[Tables](#)[Figures](#)[⏪](#)[⏩](#)[◀](#)[▶](#)[Back](#)[Close](#)[Full Screen / Esc](#)[Printer-friendly Version](#)[Interactive Discussion](#)

RH and the controlled RH intended to mirror ambient levels. While this control was mostly excellent, an additional complication was caused by lag between the internal temperature of the ambient classifier column and the actual ambient temperature. The ambient RH probe did not have this limitation. Thus, the controlled RH of the sample stream entering the final classifier was accurate, but sometimes differed from the RH, perturbed by temperature lag, in the ambient classifier. This perturbation was small, but did decrease the accuracy of detection of hysteretic aerosol near phase transition RH levels. When the aerosol was not near phase transitions, this perturbation is also corrected by the application of a hygroscopic growth model. The limitations of this method lie in its inability to treat phase transitions, only modeling continuous variation of water content with changes in RH. The hygroscopicity model utilized for these manipulations treated the aerosol as a single component salt solution surrounding an inactive “core”. The water activity and surface tension of the solution were calculated using parameterizations from Tang et al. (Tang and Munkelwitz, 1994; Tang, 1996; Tang et al., 1997). The prediction of the equivalent measurement results for an aerosol for an arbitrary, alternative ambient RH was also used to standardize all measurements to a single RH as a means of normalizing the variation in water content due to RH.

### 2.3.4 Qualification of hysteresis and scan offset

Though these attempts to remove RH and temperature driven deviations in the measurements greatly improved the results, some noise remained in the AS-TDMA measurements. A final refinement of the results was conducted based on the position of non-hysteretic modes in the EF and DF results. These modes should possess a unity size ratio, but occasionally were offset. This was most likely due to too rapid shifts in ambient RH and temperature for either the controlled RH to mirror or the ambient RH probe to capture, thus frustrating the RH correction routines. However, modes in the EF and DF results can be determined to be non-hysteretic on other criteria than unity size ratio. The simplest criterion that indicates non-hysteretic modes without depending on direct comparison to ambient size is similar size ratio for the EF mode with the highest

size ratio and DF mode with the smallest. Roughly 75 % of measurements during the winter contained modes that met this criterion. This size ratio of the non-hysteretic fractions can then be defined as a new effective unity. Using a standard set of similar criteria, a version of the dataset was created that applied determined unity values from EF and DF measurements to their associated Drying process results as well.

Though this technique is not perfectly rigorous, it is expected to produce a reasonable first-order approximation of the actual ambient hydration characteristics. Moreover, it significantly improves the qualification of modes as hysteretic (the primary result of the AS-TDMA), basing the determination on the set of criteria rather than a less reliable unity basis. Also, the offset was only applied to the DF, EF and Drying results together and did not change their relative results. Finally, this technique is applicable to every scan as either the EF or DF process results must have a mode that does not change due to phase transitions.

The qualification of DF and EF process modes as hysteretic is slightly more complicated than applying a threshold deviation from the corrected unity growth. Using a simple threshold of characteristic size ratio in this determination would skew the results, admitting more measurements at high RH where more particulate water is generally involved. To remove this bias, the hygroscopic growth model is applied to the results to simulate their equivalents for a standard RH (here, 60 %). A threshold departure of  $\pm 0.03$  (for DF and EF, respectively) from unity ambient-to-final size ratio was then used as the criteria for the determination. While such hygroscopic manipulations are fraught by unknown surface tension and activity characteristics, the benefits here outweighed introduced error.

### 2.3.5 Calibration

In this final element of methodology the calibration techniques for the AS-TDMA are described. Similar to other TDMA systems, the RH probe calibration is derived from the instrument response to a known aerosol. The calibration of the other critical

## Measurement of ambient aerosol hydration state

N. F. Taylor et al.

Title Page

Abstract

Introduction

Conclusions

References

Tables

Figures



Back

Close

Full Screen / Esc

Printer-friendly Version

Interactive Discussion



TDMA components, the flow meters and high voltage sources, were based on direct measurements.

The RH calibration was inferred from AS-TDMA measurements conducted on atomizer generated ammonium sulfate aerosol. The atomizer generated aerosol stream was conditioned to contain both meta-stable hydrated and crystalline particles by dividing the initially hydrated stream into two parts, drying one part with a Nafion bundle and recombining. In addition, the apportionment between the two streams was adjustable, allowing the manipulation of the final RH level for multiple calibration points. Before it entered the first classifier, it was allowed to come to equilibrium with ambient temperature. From the results of the AS-TDMA measurements made on this aerosol, the actual ambient and controlled RH were determined. The two could be calibrated independently with this aerosol as only the hydrated fraction (either ambient or post-DF process) is sensitive to RH. Thus, the magnitude of growth by the initially crystalline fraction in the DF process only reflects the RH in the second classifier and controlled RH probe. Conversely, the loss in particulate water in the EF and Drying by the initially hydrated fraction indicates the RH levels in the ambient classifier and ambient RH probe only. The actual RH levels required to sustain the water content detected were calculated using activity and surface tension data from Tang et al. (Tang and Munkelwitz, 1994; Tang, 1996; Tang et al., 1997). For calculating the dry particle volume, the crystalline particles were assumed to be non-spherical with mobility equivalent diameters 1.02 times greater than their volume equivalent diameters (Biskos et al., 2006). Table 1 lists the values inferred from each process for each of the aerosol fractions. The quantity  $\Delta Q_{\text{sheath}}/HV$  refers to variation in size selection accuracy between the two classifiers:  $Q_{\text{sheath}}$  refers to the sheath flow rates and HV refers to the classifier high voltage levels. These are the two variables that determine classifier accuracy and are calibrated directly. The duplicity evident in Table 1 allows additional checks on the consistency of these variables during RH calibration.

## Measurement of ambient aerosol hydration state

N. F. Taylor et al.

Title Page

Abstract

Introduction

Conclusions

References

Tables

Figures

◀

▶

◀

▶

Back

Close

Full Screen / Esc

Printer-friendly Version

Interactive Discussion



### 3 Results and discussion

This section is broken into three parts. The first contains ancillary descriptions of the study periods including relative humidity and temperature, fine particulate ( $PM_{2.5}$ ) composition from diel filter based measurements, and H-TDMA results. The two remaining parts present the AS-TDMA results; first as case studies and individual measurements and subsequently as various study length summaries.

#### 3.1 Seasonal characterizations and ancillary results

The strongest feature in the AS-TDMA results is the contrast between the two study periods. During the summer campaign (20 July–30 August 2006) 12 % of AS-TDMA measurements indicated ambient aerosol in a more hydrated state, while no measurements indicated ambient aerosol in a less hydrated state and the balance of measurements showed no hysteresis. The winter campaign (1 November 2007–10 February 2008) measurements indicated 32 % and 17 % of sampled particles to be in more and less hydrated states, respectively. Moreover, the seasonal contrast is well supported by the differences between the  $PM_{2.5}$  composition and ambient RH measured during the two study periods. Thus, the comparison of the seasonal results is a consistent element in the presentation of these findings. In this subsection, the salient contrasts in the seasonal conditions evident in the ancillary material are highlighted. This is followed by a brief summary of H-TDMA measurements as they support AS-TDMA findings.

##### 3.1.1 Seasonal characterizations

The diurnal variation of RH and temperature during each study period is shown in Fig. 3. RH is a primary factor in both the appearance of hysteresis and in determining hydration state. Temperature does modulate the RH for phase transitions but is a factor secondary to composition. Additionally, though not treated in this paper, the

## Measurement of ambient aerosol hydration state

N. F. Taylor et al.

Title Page

Abstract

Introduction

Conclusions

References

Tables

Figures

⏪

⏩

◀

▶

Back

Close

Full Screen / Esc

Printer-friendly Version

Interactive Discussion



**Measurement of ambient aerosol hydration state**

N. F. Taylor et al.

Title Page

Abstract

Introduction

Conclusions

References

Tables

Figures



Back

Close

Full Screen / Esc

Printer-friendly Version

Interactive Discussion



temperature depictions suggest heating rates and boundary layer dynamics that influence RH history of surface aerosol. The summer period was characterized by a consistent diurnal pattern of warming and drying through the morning and cooling and humidifying through the evenings. Very low levels of RH were infrequently reached, which contributed to the dearth of observed less hydrated ambient states. The winter RH values varied widely. The RH did reach lower levels than during the summer, partially explaining the increased observance of aerosol in less hydrated states. The lack of a consistent diurnal cycle during the winter is also evident in Fig. 3.

Along with RH history, the critical RH levels for irreversible phase transitions determine hydration state. These levels are primarily driven by particulate composition with secondary influences from morphology and temperature. During month-long intensive portions of each study period, daily filter based PM<sub>2.5</sub> composition measurements were made (Lowenthal et al., 2009). As with seasonal variation in meteorological conditions, the composition of fine aerosol was quite different between the two studies. The results are shown in Fig. 4 together with the expected annual variation derived from measurements made at the on-site IMPROVE network facility and the expected RH levels for complete deliquescence of a solid composed of sulfate, nitrate and ammonium in the proportions determined by the measurements.

The estimation of the RH levels necessary for full dissolution was made using the Aerosol Inorganics Model (AIM) (Clegg et al., 1998a, b; Clegg and Brimblecombe, 2005). These estimations are intended to aid in interpreting the seasonal composition variation. The calculations did not treat surface tension and assumed a temperature of 298.15 K. Also, only the sulfate, nitrate and ammonium fractions were considered. While the neglect of the measured organic components was primarily motivated by a practical lack of thermodynamic data, the effect of heterogeneities in the quantities measured on deliquescence RH is generally a reduction of less than 10 % RH (Brooks et al., 2002; Choi and Chan, 2002), often much less (Cruz and Pandis, 2000; Hansson et al., 1998; Smith et al., 2011). Consequently, these values are reasonable first order approximations. Beyond these limitations, filter measurements produce results



integrated over the sub-2.5  $\mu\text{m}$  size range and 24 h time periods. Their relationship to highly size and time resolved AS-TDMA results is accordingly loose.

Bearing these reservations in mind, broad seasonal differences are persistent. The summer, characterized by high sulfate loading and insufficient ammonium for neutralization, has lower expected full dissolution RH levels. The winter samples were generally neutralized with accordingly high dissolution RH estimations. This difference follows the seasonal trend illustrated in the earlier IMPROVE dataset. The IMPROVE results shown were taken during the period from 1997 to 2006 in which ammonium was included in the filter analysis. These results show a yearly cycle in which peaks in sulfate and nitrate correspond to depressions in expected dissolution thresholds. It is this seasonal variation in the location of the full dissolution RH along with the seasonal change in ambient RH conditions that likely produced the more frequent detection of hysteretic aerosol during the winter measurement periods than the summer. The correlation between filter results and hysteresis detection is explored more fully in the AS-TDMA results section (Fig. 13).

### 3.1.2 TDMA results

An H-TDMA was operated intermittently during both campaigns. During the summer campaign, measurements were intermittent due to instrumentation issues. The winter operation was less fraught and more generally useful. In Fig. 5, results from both projects are shown along with a summary of the phase transition findings from the winter campaign. Fifty-six full RH scans for each size (0.05 and 0.2  $\mu\text{m}$ ) were conducted during the winter. The frequency plot indicates the fraction of these with the given phase transition RH. While knowledge of phase transition RH is an essential element in relating atmospheric conditions to local hydration state, in the present work these results primarily serve to indicate common RH levels for phase transition during the study and thus reinforce AS-TDMA results. The discrepancy between the observed deliquescence point and that predicted from composition (Fig. 4) is reasonable given loose correlation between filter and TDMA based measurements.

## Measurement of ambient aerosol hydration state

N. F. Taylor et al.

Title Page

Abstract

Introduction

Conclusions

References

Tables

Figures

◀

▶

◀

▶

Back

Close

Full Screen / Esc

Printer-friendly Version

Interactive Discussion



## 3.2 Individual measurements: full cycle sets and time series

This first section of AS-TDMA findings contains depictions of individual measurements in two arrangements: single full measurement cycles of all sizes and processes, and in sequence as time series. These serve as case studies, depicting typical phenomena from the two studies. The measurement cycle depictions primarily feature size-dependent hydration characteristics while the time series illustrate transitions in hydration behavior driven by changing ambient RH.

### 3.2.1 Individual measurement sets

The results of three full measurement cycles from both the summer and winter study periods are shown in Figs. 6 and 7. Each full cycle contains 15 measurements: one for each of the five sizes measured during each process. The plots utilize the scheme for depicting these distributions introduced in the methodologies (Sect. 2.3.1) and illustrated to the far right in Fig. 2. Here, five such depictions, corresponding to the five ambient sizes considered, are arrayed side-by-side: the ambient diameter is the abscissa.

Figure 6 shows three measurement cycles from the summer study period. The first of these depicts no hysteresis, evidenced by the near unity size ratio of the results from the DF and EF process measurements. The slight departures from unity are typical of the noise level in most of the measurements. The remaining two plots depict hysteresis for some of the ambient sizes, shown by less than unity size ratios (i.e., water loss) in the EF results. In these two plots, the portion of particulate water involved in hysteresis varies with size, with an apparent maximum inside the set of sizes measured. It is also interesting that not all of the water in the particles is lost in the EF process, illustrated by the greater water loss in the Drying measurements than in the EF measurements. This is a typical summer feature and is revisited in the study summaries of the next subsection.

## Measurement of ambient aerosol hydration state

N. F. Taylor et al.

Title Page

Abstract

Introduction

Conclusions

References

Tables

Figures

◀

▶

◀

▶

Back

Close

Full Screen / Esc

Printer-friendly Version

Interactive Discussion



**Measurement of ambient aerosol hydration state**

N. F. Taylor et al.

Title Page

Abstract

Introduction

Conclusions

References

Tables

Figures

◀

▶

◀

▶

Back

Close

Full Screen / Esc

Printer-friendly Version

Interactive Discussion



Summer results were highly regular and these three results typify that study well. As noted above, no summer measurements detected less hydrated, hysteretic aerosol. Approximately 31 % of the 318 full measurement cycles recorded during the summer included a more hydrated, hysteretic fraction at some size. Of these, 81 % displayed a variation of hysteretic water with particle size similar to that shown in the second and third plots, though the location of the apparent maximum varied. In addition, 90 % of the cycles showed increasing hygroscopicity with size.

The persistent variation of hysteretic water with size is worth consideration. Due to limited supporting data, no conclusions can be drawn; however, the following plausible hypotheses have been suggested: a reduction in hysteretic water occurs selectively for larger sizes activated as cloud condensation nuclei, driven by the rapid addition of sulfate in cloud processing. This increases the acidity of particles, reduces the deliquescence RH, and increases the likelihood of partial and stepwise dissolution of solids. The lack of hysteresis in the small sizes is caused by mechanisms driving the growth of nucleation mode aerosol such as the addition of secondary organic mass. This is supported by the generally lower hygroscopicity indicated by the Drying process for smaller sizes.

The winter results showed greater variety and the three plots in Fig. 7 from that study do not typify the period. The 0.1, 0.2 and 0.4  $\mu\text{m}$  ambient size results in the first plot depict two populations, one hysteretic and more hydrated and one containing little or no water. With the smaller sizes, it is possible that the single EF and Drying process modes contain two convoluted modes – illustrating the resolution limits of the AS-TDMA and challenges in fitting data. It is notable that the EF and Drying process results for the larger sizes are almost identical, which implies that there is little residual water in the less hydrated form of the hysteretic population. The second plot depicts an aerosol in which all of the sizes measured contain a population of less hydrated, hysteretic aerosol. For most of the sizes, there is also a fraction of more hydrated, hysteretic aerosol. In addition, there appears to be a fraction of non-hysteretic aerosol, implied by comparisons between the hysteretic mode of the DF (or EF) results and

**Measurement of ambient aerosol hydration state**

N. F. Taylor et al.

Title Page

Abstract

Introduction

Conclusions

References

Tables

Figures

◀

▶

◀

▶

Back

Close

Full Screen / Esc

Printer-friendly Version

Interactive Discussion



the near unity mode in the results of the EF (or DF) that contains its aerosol fraction. A residual non-hysteretic fraction is inferred because the number concentration (the size of the point) of the hysteretic mode does not fully account for the complementary non-hysteretic mode. A lack of certainty rises from the time separation between the measurements. The final plot illustrates a case in which only a less hydrated, hysteretic fraction exists in the larger sizes. In this case, there appears to be some residual water in the less hydrated state. This is apparent from the difference in size between the EF and Drying process modes near unity.

The variety of results from the winter campaign defied easy typecasting (as the summer). Though the number of variations in the 432 recorded measurement cycles prohibits full treatment in this format, a few characteristics may be noted. First, the multimodal behavior apparent in the three winter plots above was fairly typical. This contrasts with the summer results that were more typically monomodal. A second contrast, also treated in the result summaries, is the general lack of residual water in the less hydrated state of hysteretic aerosol during the winter. Finally, it should be noted that the simultaneous appearance of more- and less-hydrated states seen in the second of the winter plots was a regular feature. It is apparent in the winter time series and its frequency is illustrated in Fig. 12 in the results summaries. It is a surprising feature and deserves some consideration.

RH history is a determinative factor of hydration state. In conjunction with this, the coexistence of a more and less hydrated state is interesting, if not problematic. Though it is beyond the scope of this work to rigorously treat this question, two possibly complementary mechanisms can be suggested. First, it might be explained by differences in efflorescent and deliquescent transition points within the aerosol populations. A second explanation is mixing of parcels with different RH histories. This question will appear again in the second of the following time series. The AS-TDMA results will not be sufficient to answer this question but more context is provided in that format.

### 3.2.2 Time series

This section contains two time series depicting AS-TDMA results from the course of several days during each study period. The plots differ from those above primarily in that the ordinate is time rather than ambient size. All of the sizes are included and differentiated by the shading convention introduced above. In addition to the ambient RH, these time series show the controlled RH to illustrate the proficiency of the instrument at reproducing ambient levels.

This format neatly depicts transitions in the hydration characteristics of ambient aerosol. The following examples illustrate the effect of varying RH on both the detection of hysteresis and the hydration state observed. However, it must be emphasized that the length of time considered is sufficient to include significant variation in the aerosol. The treatment of concentration in these plots is deceptive as it is normalized by the total AS-TDMA scan concentration (i.e., each resultant size distribution is normalized to unity total concentration). This emphasizes the contribution of individual modes but obscures aerosol population dynamics and comparative concentration. These cautions notwithstanding, the following plots serve well to highlight interesting variety in hydration behavior.

A typical time series from the summer campaign is shown in Fig. 8. It includes all measurements made over a 2.5 day period. It features the diurnal RH cycles that were shown, in Fig. 3 of the seasonal characterizations, to typify the period. A portion of the Drying process results (in blue) mirror the ambient RH, indicating a significantly hygroscopic aerosol fraction. Though it is difficult to discern, the larger sizes are generally bottommost: an attribute noted in the measurement cycle plots above. The DF results (in red) are consistently near unity in coherence to the study-long failure to detect any less hydrated ambient state. The EF results vary with RH. During the nights and mornings when the RH is high, the EF results remain near unity. As RH decreases through the afternoons, a portion of the EF results begin to indicate water loss. This suggests that a portion of the aerosol does exhibit hysteretic hydration behavior, but

## Measurement of ambient aerosol hydration state

N. F. Taylor et al.

Title Page

Abstract

Introduction

Conclusions

References

Tables

Figures



Back

Close

Full Screen / Esc

Printer-friendly Version

Interactive Discussion



that the deliquescence threshold is crossed as the RH increases beyond the domain of hysteresis

As noted, this was a typical case for the summer. Most generally, some portion of the ambient aerosol would exhibit hysteresis when RH levels fell. The transition point and portion of the aerosol involved varied. Detecting that transition point is a task better suited to the RH-scanning H-TDMA. Thus, the primary unique AS-TDMA result from the summer is quite monotonic: whenever hysteresis was detected, the aerosol was found in the more hydrated state.

This was not so during the winter. Figure 9 depicts a case study chosen from the winter campaign that shows changes in the hydration state detected during a 2 day period. Three related aspects of hydration state variability highlighted in this case study are interesting, if not surprising. The first is the variability of the detected ambient hydration state despite local RH remaining within the RH domain of hysteresis. The second is the continuous variation of the fraction in each state, evident from the changes in the relative concentration of less-hydrated particles. The final feature is that only part of the hysteretic fraction at each size is ever detected in a less hydrated state.

Before discussing these more subtle points, one additional feature should be noted. This plot shares with the summer case study a descent of ambient RH into and out of the RH domain of hysteresis of some fractions of the aerosol. This occurs during the first and second measurement cycles, shown at 09:00, 6 December 2007; illustrated by the detection of hysteresis only during the 0.4  $\mu\text{m}$  EF measurement in the first and the detection of a hysteretic fraction of all sizes in the second. Near the end of the case study, ambient RH rises out of the hysteresis domain with no non-unity EF results appearing after 00:00, 8 December. Unlike the summer case study, RH also appears to fall below the domain of hysteresis, with little hysteresis detected in the measurement after 12:00, 7 December.

The first of the points listed above, the variability of hydration state within the apparent RH domain of hysteresis, is illustrated best by the appearance and disappearance of less hydrated fractions in the results. These occur while RH is falling and rising,

## Measurement of ambient aerosol hydration state

N. F. Taylor et al.

Title Page

Abstract

Introduction

Conclusions

References

Tables

Figures

◀

▶

◀

▶

Back

Close

Full Screen / Esc

Printer-friendly Version

Interactive Discussion



**Measurement of  
ambient aerosol  
hydration state**

N. F. Taylor et al.

Title Page

Abstract

Introduction

Conclusions

References

Tables

Figures

⏪

⏩

◀

▶

Back

Close

Full Screen / Esc

Printer-friendly Version

Interactive Discussion



respectively. Yet, though RH continues to fall (and rise), a hysteretic fraction continues to be detected. This indicates that the endpoints of the hysteretic domain, the RH's for irreversible efflorescence and deliquescence, are not reached. In the case of disappearing less hydrated states, the transition occurs well in advance of the apparent deliquescence RH indicated by the cessation of hysteresis detection at 01:00, 8 December. Similarly, local ambient RH falls significantly following the first appearance of the less hydrated state before reaching the supposed efflorescence RH immediately following 12:00, 7 December.

During this period of falling RH after the first appearance of less hydrated, hysteretic ambient aerosol, the second interesting feature is evident. The fraction of hysteretic ambient aerosol determined as less hydrated continues to increase with falling RH. Though not evident, the total hysteretic fraction for the smaller sizes increases during this time, but the  $0.2\ \mu\text{m}$  hysteretic aerosol fraction remains constant. For that size, it appears that the hysteretic population is conserved while a portion of more hydrated aerosol transitions to the less hydrated state. However, at no point do all hysteretic aerosols occupy a less hydrated ambient state. This third feature is broadly evident, but is most surprising following the apparent fall of RH below the domain of hysteresis at 12:00, 7 December.

Before speculating further about these features, some consideration is given here to the typicality of this case. During the winter campaign the detection of less hydrated, hysteretic aerosol most often involved a similar apparent transition from a fraction of metastable aerosol as RH fell. The exceptions were 2 cases in which the RH fell lower than the ostensible efflorescence point. When RH rose back into the hysteretic domain, the hysteretic fraction was generally detected in a less hydrated form. However, the gradual increase, with falling RH, in the portion of hysteretic aerosol in a less hydrated form depicted in the case in Fig. 9 is typical. Similarly, the gradual reversion of the hysteretic fraction to a metastable state with increasing RH is typical. For both transitions, the noted feature that they occur while local RH remains within the bounds of efflorescence RH and deliquescence RH is consistent in all observed cases. Also,

these transitions all proceeded through a regime in which more- and less-hydrated states were simultaneously detected. In some cases, as RH fell sufficiently low, the entire hysteretic aerosol fraction was eventually found in a less hydrated state. Yet, this complete reduction in the portion of metastable aerosol progressed gradually with falling RH.

This case study is thus largely typical. One additional feature should be covered, springing from the two exceptional cases mentioned above in which RH apparently fell below the domain of hysteresis. The notable feature of these cases is that the apparent efflorescence RH (determined by the cessation of hysteresis detection with low RH) is near the RH at which the meta-stable fraction disappears: much nearer, particularly, than the apparent deliquescence RH (detected in the case above near 00:00, 8 December 2007) is to the RH at which a less hydrated, hysteretic fraction is no longer present in the case above and all others considered.

Taken together, these characteristics suggest a significant degree of mixing and a significant divergence between the local RH and the RH history of the particles. The bias discussed in the previous paragraph suggests that the RH history is more often perturbed higher than lower. This bias is likely due to the characteristic profile of increased RH with height in active boundary layers. In conclusion, the results depicted in this case study suggest that ambient hydration states are quite dynamic, highlighting the need for comparative studies between the various model treatments of hydration state and in situ measurement.

### 3.3 Study summaries

This section features a variety of plots summarizing AS-TDMA results from the two measurement campaigns. It begins with a set of simple summaries of the AS-TDMA DF and EF process results. The next element treats the seasonal contrast in water content of the less hydrated state of hysteretic aerosol. Finally, two sets of plots illustrate relations between the observance of hysteresis and time of day, RH and the composition measurements discussed above.

## Measurement of ambient aerosol hydration state

N. F. Taylor et al.

Title Page

Abstract

Introduction

Conclusions

References

Tables

Figures



Back

Close

Full Screen / Esc

Printer-friendly Version

Interactive Discussion





### 3.3.1 AS-TDMA deliquescence forcing and efflorescence forcing process results summary

The frequency plots in Fig. 10 simply summarize the DF and EF AS-TDMA measurements for each ambient size during the two measurement periods. In keeping with convention, the DF process results are shown in red and EF results in green. The counting is based on the modes characterized by log-normal curves. Each mode is counted as the fraction it contributes to the total concentration in its containing size distribution. Each measurement is given a total weight of 1. The grey bars indicate the fraction of non-hysteretic results. These are calculated based on the portion of aerosol in each measurement not accounted for by a hysteretic DF or EF process mode. In effect, they are 100 % less the sum of the bars shown in red and green.

Two major features appear in the summer results. The first is the lack of less hydrated, hysteretic aerosol, indicated by no non-unity DF results. The second is the variation with size in the portion of more hydrated hysteretic aerosol. A maximum frequency of detection occurs in 0.2  $\mu\text{m}$  measurements. This corresponds with the size variation noted in the single measurement cycle results shown above. The winter results stand in contrast to the summer on two points: more frequent detection of hysteresis and variety in the hydration state detected. Similar to the summer, the winter results also show variation with size. Most frequent detection of hysteresis occurred with the larger sizes. Interestingly, there is little size variation in the fraction of less hydrated states detected.

### 3.3.2 Residual water

The charts in Fig. 10 summarize only the differences between hydration states. However, as indicated in the discussions of the measurement cycle examples, there was a seasonal contrast in the amount of water contained in the less hydrated state. This is based on the difference between the least hydrated state and the Drying process results.

## Measurement of ambient aerosol hydration state

N. F. Taylor et al.

Title Page

Abstract

Introduction

Conclusions

References

Tables

Figures



Back

Close

Full Screen / Esc

Printer-friendly Version

Interactive Discussion



## Measurement of ambient aerosol hydration state

N. F. Taylor et al.

Title Page

Abstract

Introduction

Conclusions

References

Tables

Figures

◀

▶

◀

▶

Back

Close

Full Screen / Esc

Printer-friendly Version

Interactive Discussion



The formations of this and the remaining charts in this section rely on the qualification of each mode (as characterized by log-normal curve fits) in each EF and DF process measurement as either hysteretic or non-hysteretic. This qualification was discussed in the methodology section (2.3.4). As with the previous charts, modes are counted as the fraction they contributed to their containing size distribution.

The residual water in the less hydrated state is quantified here by the ratio of final diameter following the EF process and following the Drying process. Figure 11 contrasts this result for the summer and winter campaigns. Only the measurements in which hysteresis is detected are counted. Also, the hygroscopic growth model described in the methodologies section was applied to simulate equivalent results at 60 % RH. This corrected for the additional bias introduced by variation in the RH at which hysteresis occurred, a concept more fully treated in the next sub-section. As previously noted, the difference between the post-EF and post-Drying sizes was generally larger during the summer. This is indicated by more common occurrence of higher ratios.

### 3.3.3 Relative humidity and time of day dependence of hysteresis detection

Figure 12 contains frequency plots of the detection of hysteresis versus time of day and versus RH. The formation of these relies on the hysteresis qualifications already discussed and counts each measurement as a unit with multiple modes as their appropriate fraction. The frequency is normalized by the total number of measurements, so that each bar indicates the fraction of *all* measurements (not only those detecting hysteresis) of each type (EF or DF) that both has the characteristics of the bin and is categorized as hysteretic. Because of this, the bars do not sum to 1, but to the total fraction of hysteresis detection. For comparison, the total fraction of all measurements that were conducted under the bin conditions are also plotted in the RH charts using the right axis. Finally, the darker portion of the bars in the winter RH chart indicates the fraction that was detected in coincidence with the other hydration state, mentioned in the case study discussion.

---

**Measurement of ambient aerosol hydration state**N. F. Taylor et al.

---

[Title Page](#)[Abstract](#)[Introduction](#)[Conclusions](#)[References](#)[Tables](#)[Figures](#)[Back](#)[Close](#)[Full Screen / Esc](#)[Printer-friendly Version](#)[Interactive Discussion](#)

The major feature of the summer RH chart is the lack of hysteresis at high RH. This also appears in the winter chart, but the truncation occurs at higher RH levels. This cutoff corresponds roughly to an average RH for deliquescence during the season and the higher deliquescence RH in the winter is in accordance with the estimates from composition illustrated in Fig. 4. The summer and winter charts also contrast in overall frequency of hysteresis. But the greatest contrast lies in the detection of less hydrated, hysteretic aerosol during the winter.

The winter RH based hysteresis frequency chart illustrates a strong relationship between RH level and hydration state, with less hydrated states being more frequently detected at low RH. It also shows the predominance of more hydrated over less hydrated states. Reasons for this predominance can be suggested. First, it is evident from the dashed distribution of total measurement frequency that ambient RH more often exceeded the deliquescence point than it fell below the efflorescence point. In addition, as discussed concerning the winter case study, there appears to be a bias in RH history versus local, ambient RH history toward higher RH. This would follow from active boundary layer circulations. However, these suppositions need further work and treatment of local atmospheric dynamics to be confirmed.

From comparisons of the dashed distribution of total measurement frequency of each season it is evident that RH fell lower in the winter than in the summer. Yet it is interesting that the detection of less hydrated, hysteretic aerosol in the winter often occurred at RH levels reached during the summer. This could be the result of likely seasonal differences in the efflorescence point, similar to the variation in deliquescence RH roughly evident in the charts. But an additional factor could be local dynamics. As illustrated in the depictions of diurnal RH and temperature in Fig. 3, in the summer RH generally fell in conjunction with daytime heating. Thus, the periods of low RH were likely associated with active boundary layers. This in turn would suggest that the RH history is driven by boundary layer circulations with accompanying lofting, cooling and increased RH. In contrast, the weak diurnal variation illustrated for the winter period both in the case study (Fig. 9) and Fig. 3 seems less susceptible to this bias.

**Measurement of ambient aerosol hydration state**

N. F. Taylor et al.

[Title Page](#)[Abstract](#)[Introduction](#)[Conclusions](#)[References](#)[Tables](#)[Figures](#)[Back](#)[Close](#)[Full Screen / Esc](#)[Printer-friendly Version](#)[Interactive Discussion](#)

The lower set of charts shows the time-of-day dependence of hysteresis detection. The results are strongly anticipated from RH dependence above and RH and Temperature characterizations in Fig. 3. Thus the summer plot indicates a strong diurnal cycle. While the winter plot shows a cycle as well, it is weaker and hysteresis was detected at all times of day. No total measurement frequency plot is included in the time-of-day charts to avoid confusion. It would be equivalent to the time-of-day distribution shown in Fig. 3 that has the major characteristic of nightly depression due to the inoperability of the instrument at very high RH. However, as the RH plots in Fig. 12 show, it is highly unlikely that hysteresis would have been detected during these periods. Otherwise, measurements were conducted with nearly uniform frequency. Thus, the missing measurements should not be assumed to contain a similar proportion of hysteresis detection as by-eye comparisons would suggest.

### 3.3.4 Hysteresis detection versus filter composition results

In this final sub-section of results, the relationship between the filter composition measurements and the detection of hysteresis is considered. This comparison is slightly compromised by limitations on the size and time resolution of filter based measurements. However, beyond being the best available composition data, these filter results are comparable to the nation-spanning IMPROVE network. This greatly increases the possible applicability of constructive comparisons.

The AIM model deliquescence predictions shown in Fig. 4 are the basis of this comparison. Efflorescence is not treated for a variety of reasons: First, the determination of efflorescence RH thresholds is significantly more difficult, being dependent on solid phase nucleation kinetics rather than bulk thermodynamics (as deliquescence). Consequently, models predicting this behavior are not as readily available. Secondly, full efflorescence and cessation of hysteresis detection rarely occurred in these studies. Therefore, this comparison focuses on the deliquescence transition as predicted by composition and indicated by cessation of hysteresis detection in AS-TDMA measurements.

## Measurement of ambient aerosol hydration state

N. F. Taylor et al.

Title Page

Abstract

Introduction

Conclusions

References

Tables

Figures

⏪

⏩

◀

▶

Back

Close

Full Screen / Esc

Printer-friendly Version

Interactive Discussion



Figure 13 depicts the relation between predicted deliquescence RH, ambient RH, and hysteresis detection and was formed as follows. First, the filter composition results were interpolated to all of the measurement triplets (DF, EF and Drying process) from the intensive periods of each campaign. The interpolation was based on the time each measurement occurred and ascribing the daily filter results to 12:00 p.m. From these compositions the expected full dissolution RH was calculated for each AS-TDMA measurement using AIM as described in the first portion of the results section. Each measurement was then plotted as a point in the charts of Fig. 13 with coordinates of the expected full dissolution RH and the average ambient RH during the measurement. Next, the point was shaded based on the fraction of measurements with similar RH coordinates that detected more- or less-hydrated (or either), hysteretic aerosol, depending on the plot. The local hysteresis frequency was calculated for each point using the nearest 80 measurements under a simple distance on the ambient RH, calculated dissolution RH coordinates.

With this formation, if the ambient aerosol deliquescence RH is consistent with expectation from composition, hysteresis should be detected only and universally at coordinates below the 1:1 bisection. This is not the case. Focusing on the top plot, it is evident both that hysteresis is detected beyond expected deliquescence RH levels and that hysteresis is not consistently detected below the expected deliquescence levels. This result is somewhat anticipated by the illustrated size dependence of hysteresis detection already discussed. Beyond this, however, there is a surprisingly persistent threshold for hysteresis. The less hydrated state detection indicated does not form as distinct a feature, a consequence of the deliquescence basis of the plot.

## 4 Conclusions

The findings presented in the paper provide a new perspective into the behavior of atmospheric aerosol. Primary among the unique elements of this investigation was the positive detection of both more- and less- hydrated forms of hysteretic ambient aerosol.

**Measurement of ambient aerosol hydration state**

N. F. Taylor et al.

[Title Page](#)[Abstract](#)[Introduction](#)[Conclusions](#)[References](#)[Tables](#)[Figures](#)[⏪](#)[⏩](#)[◀](#)[▶](#)[Back](#)[Close](#)[Full Screen / Esc](#)[Printer-friendly Version](#)[Interactive Discussion](#)

For the GRSM project, this detection was strongly biased by season, with less hydrated states detected only during the winter project. We have illustrated that this was likely driven both by seasonal variation in RH and seasonal variation in aerosol composition. Variability in the detection of both states during the winter project allowed us to examine the relationship between local conditions and ambient hydration state. This relationship was shown in case studies to be complex and dynamic. These case studies contained several notable features such as the coincident detection of more- and less- hydrated states within the results of a single measurement and the continuous variation in the fraction in these states even as local RH remained within the domain of hysteresis.

Three additional results from the AS-TDMA concerning aerosol hydration characteristics that did not depend on its unique capabilities have local significance. First, the apparent RH levels for phase transitions varied between the two seasons, with higher RH thresholds for both efflorescence and deliquescence apparent during the winter. Second, the less hydrated state of hysteretic aerosols detected during the summer contained significant residual water, opposed to their nearly dehydrated winter counterparts. Finally, detection of hysteresis showed dependence on size, especially during the summer campaign.

In the presentation of these results, some considerations of future directions have already been given. Primarily, the descriptions indicated the desirability of complementary treatments of local dynamics to facilitate the understanding of observed phenomenon. These included the continuous variation of the hydration state of the hysteretic fraction noted in the winter case study and the bias of toward the more hydrated state indicated in the summary of RH dependence. Further, while the AS-TDMA has been demonstrated to retrieve the ambient hydration state of aerosol, the ultimate objective is to achieve this determination with models. Future work would therefore be greatly enhanced by the incorporation of modeling efforts. Within the current project, a more focused assessment of the implication of these results and those from recent and future campaigns at Mount Rainier and Acadia US National Parks for visibility degradation is forthcoming. While the Great Smoky Mountains findings clearly show that not all

particulate sulfate is hydrated, they also demonstrate the importance of local conditions for that result and underscore the need for measurements in diverse environments. In conclusion, the AS-TDMA results from this study provide a first look at the variability of ambient aerosol hydration state. Though future efforts are needed to close the remaining gaps in our understanding of this behavior, we believe the AS-TDMA configuration can contribute uniquely to this endeavor.

*Acknowledgements.* We would like to thank the Electric Power Research Institute for supporting this research. Also, we gratefully acknowledge the cooperation and support of Jim Renfro and the park staff at Great Smoky Mountains National Park during these measurement campaigns.

## References

- Berg, O. H., Swietlicki, E., and Krejci, R.: Hygroscopic growth of aerosol particles in the marine boundary layer over the Pacific and Southern Oceans during the First Aerosol Characterization Experiment (ACE 1), *J. Geophys. Res.*, 103, 16535–16545, doi:10.1029/97jd02851, 1998.
- Biskos, G., Paulsen, D., Russell, L. M., Buseck, P. R., and Martin, S. T.: Prompt deliquescence and efflorescence of aerosol nanoparticles, *Atmos. Chem. Phys.*, 6, 4633–4642, doi:10.5194/acp-6-4633-2006, 2006.
- Brink, H. M. T., Veefkind, J. P., Waijers-Ijpelaan, A., and van der Hage, J. C.: Aerosol light-scattering in The Netherlands, *Atmos. Environ.*, 30, 4251–4261, 1996.
- Brooks, S. D., Wise, M. E., Cushing, M., and Tolbert, M. A.: Deliquescence behavior of organic/ammonium sulfate aerosol, *Geophys. Res. Lett.*, 29, 1917, doi:10.1029/2002gl014733, 2002.
- Carrico, C. M., Rood, M. J., Ogren, J. A., Neusüß, C., Wiedensohler, A., and Heintzenberg, J.: Aerosol Optical properties at Sagres, Portugal during ACE-2, *Tellus B*, 52, 694–715, doi:10.1034/j.1600-0889.2000.00049.x, 2000.
- Carrico, C. M., Kus, P., Rood, M. J., Quinn, P. K., and Bates, T. S.: Mixtures of pollution, dust, sea salt, and volcanic aerosol during ACE-Asia: Radiative properties as a function of relative humidity, *J. Geophys. Res.*, 108, 8650, doi:10.1029/2003jd003405, 2003.

## Measurement of ambient aerosol hydration state

N. F. Taylor et al.

Title Page

Abstract

Introduction

Conclusions

References

Tables

Figures

◀

▶

◀

▶

Back

Close

Full Screen / Esc

Printer-friendly Version

Interactive Discussion



**Measurement of ambient aerosol hydration state**

N. F. Taylor et al.

Title Page

Abstract

Introduction

Conclusions

References

Tables

Figures

◀

▶

◀

▶

Back

Close

Full Screen / Esc

Printer-friendly Version

Interactive Discussion



Charlson, R. J., Vanderpol, A. H., Covert, D. S., Waggoner, A. P., and Ahlquist, N. C.:  $\text{H}_2\text{SO}_4/(\text{NH}_4)_2\text{SO}_4$  background aerosol: Optical detection in St. Louis region, *Atmos. Environ.*, 8, 1257–1267, 1974.

Choi, M. Y. and Chan, C. K.: The Effects of Organic Species on the Hygroscopic Behaviors of Inorganic Aerosols, *Environ. Sci. Technol.*, 36, 2422–2428, doi:10.1021/es0113293, 2002.

Ciobanu, V. G., Marcolli, C., Krieger, U. K., Zuend, A., and Peter, T.: Efflorescence of Ammonium Sulfate and Coated Ammonium Sulfate Particles: Evidence for Surface Nucleation, *J. Phys. Chem. A*, 114, 9486–9495, doi:10.1021/jp103541w, 2010.

Clegg, S. L., Brimblecombe, P., and Wexler, A. S.: Thermodynamic Model of the System  $\text{H}^+ - \text{NH}_4^+ - \text{SO}_4^{2-} - \text{NO}_3^- - \text{H}_2\text{O}$  at Tropospheric Temperatures, *J. Phys. Chem. A*, 102, 2137–2154, doi:10.1021/jp973042r, 1998a.

Clegg, S. L., Brimblecombe, P., and Wexler, A. S.: Thermodynamic Model of the System  $\text{H}^+ - \text{NH}_4^+ - \text{Na}^+ - \text{SO}_4^{2-} - \text{NO}_3^- - \text{Cl}^- - \text{H}_2\text{O}$  at 298.15 K, *J. Phys. Chem. A*, 102, 2155–2171, doi:10.1021/jp973043j, 1998b.

Clegg, S. L., and Brimblecombe, P.: Comment on the “Thermodynamic Dissociation Constant of the Bisulfate Ion from Raman and Ion Interaction Modeling Studies of Aqueous Sulfuric Acid at Low Temperatures”, *J. Phys. Chem. A*, 109, 2703–2706, doi:10.1021/jp0401170, 2005.

Colberg, C. A., Luo, B. P., Wernli, H., Koop, T., and Peter, Th.: A novel model to predict the physical state of atmospheric  $\text{H}_2\text{SO}_4/\text{NH}_3/\text{H}_2\text{O}$  aerosol particles, *Atmos. Chem. Phys.*, 3, 909–924, doi:10.5194/acp-3-909-2003, 2003.

Cruz, C. N. and Pandis, S. N.: Deliquescence and Hygroscopic Growth of Mixed Inorganic-Organic Atmospheric Aerosol, *Environ. Sci. Technol.*, 34, 4313–4319, doi:10.1021/es9907109, 2000.

Day, D. E. and Malm, W. C.: Aerosol light scattering measurements as a function of relative humidity: a comparison between measurements made at three different sites, *Atmos. Environ.*, 35, 5169–5176, 2001.

Day, D. E., Malm, W. C., and Ames, R. B.: Final Report – Southeastern Aerosol and Visibility Study, 2001.

Dougle, P. G., Veeffkind, J. P., and ten Brink, H. M.: Crystallisation of mixtures of ammonium nitrate, ammonium sulphate and soot, *J. Aerosol Sci.*, 29, 375–386, 1998.

Fierz-Schmidhauser, R., Zieger, P., Gysel, M., Kammermann, L., DeCarlo, P. F., Baltensperger, U., and Weingartner, E.: Measured and predicted aerosol light scattering en-



**Measurement of ambient aerosol hydration state**

N. F. Taylor et al.

Title Page

Abstract

Introduction

Conclusions

References

Tables

Figures

◀

▶

◀

▶

Back

Close

Full Screen / Esc

Printer-friendly Version

Interactive Discussion



hancement factors at the high alpine site Jungfraujoch, *Atmos. Chem. Phys.*, 10, 2319–2333, doi:10.5194/acp-10-2319-2010, 2010.

Gasparini, R., Li, R., and Collins, D. R.: Integration of size distributions and size-resolved hygroscopicity measured during the Houston Supersite for compositional categorization of the aerosol, *Atmos. Environ.*, 38, 3285–3303, 2004.

Gasparini, R., Collins, D. R., Andrews, E., Sheridan, P. J., Ogren, J. A., and Hudson, J. G.: Coupling aerosol size distributions and size-resolved hygroscopicity to predict humidity-dependent optical properties and cloud condensation nuclei spectra, *J. Geophys. Res.*, 111, D05S13, doi:10.1029/2005jd006092, 2006.

Grant, K. E., Chuang, C. C., Grossman, A. S., and Penner, J. E.: Modeling the spectral optical properties of ammonium sulfate and biomass burning aerosols: parameterization of relative humidity effects and model results, *Atmos. Environ.*, 33, 2603–2620, 1999.

Gysel, M., McFiggans, G. B., and Coe, H.: Inversion of tandem differential mobility analyser (TDMA) measurements, *J. Aerosol Sci.*, 40, 134–151, 2009.

Hansson, H. C., Rood, M. J., Koloutsou-Vakakis, S., Hämeri, K., Orsini, D., and Wiedensohler, A.: NaCl Aerosol Particle Hygroscopicity Dependence on Mixing with Organic Compounds, *J. Atmos. Chem.*, 31, 321–346, doi:10.1023/a:1006174514022, 1998.

Haywood, J. M., Roberts, D. L., Slingo, A., Edwards, J. M., and Shine, K. P.: General Circulation Model Calculations of the Direct Radiative Forcing by Anthropogenic Sulfate and Fossil-Fuel Soot Aerosol, *J. Climate*, 10, 1562–1577, doi:10.1175/1520-0442(1997)010<1562:GCMCOT>2.0.CO;2, 1997.

Lowenthal, D., Zielinska, B., Mason, B., Samy, S., Samburova, V., Collins, D., Spencer, C., Taylor, N., Allen, J., and Kumar, N.: Aerosol characterization studies at Great Smoky Mountains National Park, summer 2006, *J. Geophys. Res.*, 114, D08206, doi:10.1029/2008jd011274, 2009.

Martin, S. T.: Phase Transitions of Aqueous Atmospheric Particles, *Chem. Rev.*, 100, 3403–3454, doi:10.1021/cr990034t, 2000.

Martin, S. T., Han, J. H., and Hung, H. M.: The size effect of hematite and corundum inclusions on the efflorescence relative humidities of aqueous ammonium sulfate particles, *Geophys. Res. Lett.*, 28, 2601–2604, doi:10.1029/2001gl013120, 2001.

Martin, S. T., Hung, H. M., Park, R. J., Jacob, D. J., Spurr, R. J. D., Chance, K. V., and Chin, M.: Effects of the physical state of tropospheric ammonium-sulfate-nitrate particles on global aerosol direct radiative forcing, *Atmos. Chem. Phys.*, 4, 183–214, doi:10.5194/acp-4-183-

**Measurement of ambient aerosol hydration state**

N. F. Taylor et al.

Title Page

Abstract

Introduction

Conclusions

References

Tables

Figures

◀

▶

◀

▶

Back

Close

Full Screen / Esc

Printer-friendly Version

Interactive Discussion



2004, 2004.

Mifflin, A. L., Smith, M. L., and Martin, S. T.: Morphology hypothesized to influence aerosol particle deliquescence, *Phys. Chem. Chem. Phys.*, 11, 10095–10107, 2009.

Pitchford, M. L. and McMurry, P. H.: Relationship Between Measured Water-Vapor Growth and Chemistry of Atmospheric Aerosol for Grand-Canyon, Arizona, in Winter 1990, *Atmos. Environ.*, 28, 827–839, 1994.

Pitchford, M. L., Malm, W., Schichtel, B., Kumar, N., Lowenthal, D., and Hand, J.: Revised Algorithm for Estimating Light Extinction from IMPROVE Particle Speciation Data, *J. Air Waste Manage.*, 57, 1326–1336, doi:10.3155/1047-3289.57.11.1326, 2007.

Rissler, J., Vestin, A., Swietlicki, E., Fisch, G., Zhou, J., Artaxo, P., and Andreae, M. O.: Size distribution and hygroscopic properties of aerosol particles from dry-season biomass burning in Amazonia, *Atmos. Chem. Phys.*, 6, 471–491, doi:10.5194/acp-6-471-2006, 2006.

Rood, M. J., Covert, D. S., and Larson, T. V.: Hygroscopic properties of atmospheric aerosol in Riverside, California, *Tellus B*, 39B, 383–397, doi:10.1111/j.1600-0889.1987.tb00201.x, 1987.

Rood, M. J., Shaw, M. A., Larson, T. V., and Covert, D. S.: Ubiquitous nature of ambient metastable aerosol, *Nature*, 337, 537–539, 1989.

Rosenoern, T., Schlenker, J. C., and Martin, S. T.: Hygroscopic Growth of Multicomponent Aerosol Particles Influenced by Several Cycles of Relative Humidity, *J. Phys. Chem. A*, 112, 2378–2385, doi:10.1021/jp0771825, 2008.

Santarpia, J. L., Li, R., and Collins, D. R.: Direct measurement of the hydration state of ambient aerosol populations, *J. Geophys. Res.*, 109, D18209, doi:10.1029/2004jd004653, 2004.

Shaw, M. A. and Rood, M. J.: Measurement of the crystallization humidities of ambient aerosol particles, *Atmos. Environ. Part A. General Topics*, 24, 1837–1841, 1990.

Sjogren, S., Gysel, M., Weingartner, E., Alfarra, M. R., Duplissy, J., Cozic, J., Crosier, J., Coe, H., and Baltensperger, U.: Hygroscopicity of the submicrometer aerosol at the high-alpine site Jungfraujoch, 3580 m a.s.l., Switzerland, *Atmos. Chem. Phys.*, 8, 5715–5729, doi:10.5194/acp-8-5715-2008, 2008.

Smith, M. L., Kuwata, M., and Martin, S. T.: Secondary Organic Material Produced by the Dark Ozonolysis of  $\alpha$ -Pinene Minimally Affects the Deliquescence and Efflorescence of Ammonium Sulfate, *Aerosol Sci. Technol.*, 45, 244–261, 2011.

Swietlicki, E., Zhou, J., Covert, D. S., Hämeri, K., Busch, B., Väkeva, M., Dusek, U., Berg, O. H., Wiedensohler, A., Aalto, P., Mäkelä, J., Martinsson, B. G., Papaspiropoulos, G., Mentes, B.,

**Measurement of ambient aerosol hydration state**

N. F. Taylor et al.

Title Page

Abstract

Introduction

Conclusions

References

Tables

Figures

◀

▶

◀

▶

Back

Close

Full Screen / Esc

Printer-friendly Version

Interactive Discussion



- Frank, G., and Stratmann, F.: Hygroscopic properties of aerosol particles in the north-eastern Atlantic during ACE-2, *Tellus B*, 52, 201–227, doi:10.1034/j.1600-0889.2000.00036.x, 2000.
- Swietlicki, E., Hansson, H. C., Hämeri, K., Svenningsson, B., Massling, A., McFiggans, G., McMurry, P. H., Petäjä, T., Tunved, P., Gysel, M., Topping, D., Weingartner, E., Baltensperger, U., Rissler, J., Wiedensohler, A., and Kulmala, M.: Hygroscopic properties of submicrometer atmospheric aerosol particles measured with H-TDMA instruments in various environments – a review, *Tellus B*, 60, 432–469, doi:10.1111/j.1600-0889.2008.00350.x, 2008.
- Tang, I. N.: Chemical and size effects of hygroscopic aerosols on light scattering coefficients, *J. Geophys. Res.*, 101, 19245–19250, doi:10.1029/96jd03003, 1996.
- Tang, I. N. and Munkelwitz, H. R.: An investigation of solute nucleation in levitated solution droplets, *J. Colloid Interf. Sci.*, 98, 430–438, 1984.
- Tang, I. N. and Munkelwitz, H. R.: Water activities, densities, and refractive indices of aqueous sulfates and sodium nitrate droplets of atmospheric importance, *J. Geophys. Res.*, 99, 18801–18808, doi:10.1029/94jd01345, 1994.
- Tang, I. N., Munkelwitz, H. R., and Davis, J. G.: Aerosol growth studies – IV, Phase transformation of mixed salt aerosols in a moist atmosphere, *J. Aerosol Sci.*, 9, 505–511, 1978.
- Tang, I. N., Tridico, A. C., and Fung, K. H.: Thermodynamic and optical properties of sea salt aerosols, *J. Geophys. Res.*, 102, 23269–23275, doi:10.1029/97jd01806, 1997.
- Wang, J., Hoffmann, A. A., Park, R. J., Jacob, D. J., and Martin, S. T.: Global distribution of solid and aqueous sulfate aerosols: Effect of the hysteresis of particle phase transitions, *J. Geophys. Res.*, 113, D11206, doi:10.1029/2007jd009367, 2008a.
- Wang, J., Jacob, D. J., and Martin, S. T.: Sensitivity of sulfate direct climate forcing to the hysteresis of particle phase transitions, *J. Geophys. Res.*, 113, D11207, doi:10.1029/2007jd009368, 2008b.
- Wang, W., Rood, M. J., Carrico, C. M., Covert, D. S., Quinn, P. K., and Bates, T. S.: Aerosol optical properties along the northeast coast of North America during the New England Air Quality Study & #8211; Intercontinental Transport and Chemical Transformation 2004 campaign and the influence of aerosol composition, *J. Geophys. Res.*, 112, D10S23, doi:10.1029/2006jd007579, 2007.
- Zhou, J. C., Swietlicki, E., Berg, O. H., Aalto, P. P., Hämeri, K., Nilsson, E. D., and Leck, C.: Hygroscopic properties of aerosol particles over the central Arctic Ocean during summer, *J. Geophys. Res.-Atmos.*, 106, 32111–32123, 2001.

## Measurement of ambient aerosol hydration state

N. F. Taylor et al.

Title Page

Abstract

Introduction

Conclusions

References

Tables

Figures

⏪

⏩

◀

▶

Back

Close

Full Screen / Esc

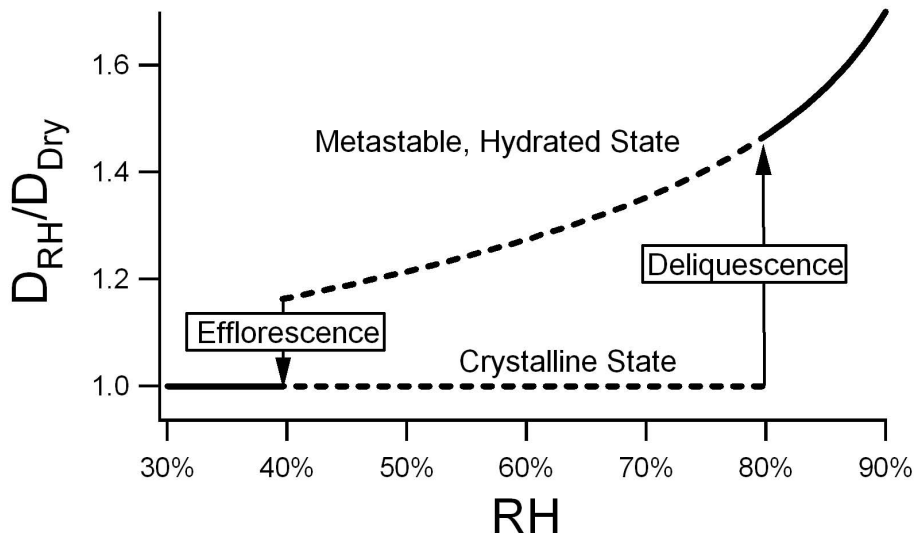
Printer-friendly Version

Interactive Discussion



**Table 1.** AS-TDMA RH probe calibration elements.

	Process	Result	Reflected in Size Change
Initially Metastable Fraction	DF	little or no change	$\Delta RH, \Delta Q_{\text{sheath}}/HV$
	EF	shrinking	$RH_{\text{Ambient}}, \Delta Q_{\text{sheath}}/HV$
	Drying	shrinking	$RH_{\text{Ambient}}, \Delta Q_{\text{sheath}}/HV$
Initially Crystalline Fraction	DF	growth	$RH_{\text{Controlled}}, \Delta Q_{\text{sheath}}/HV$
	EF	little or no change	$\Delta Q_{\text{sheath}}/HV$
	Drying	little or no change	$\Delta Q_{\text{sheath}}/HV$



**Fig. 1.** Idealized ammonium sulfate growth curve.

**Measurement of ambient aerosol hydration state**

N. F. Taylor et al.

Title Page

Abstract

Introduction

Conclusions

References

Tables

Figures

◀

▶

◀

▶

Back

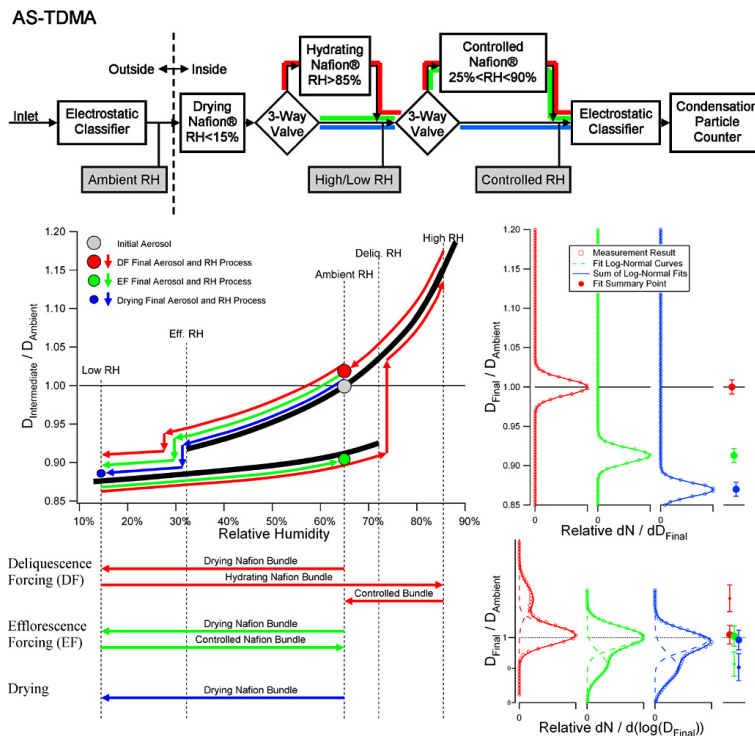
Close

Full Screen / Esc

Printer-friendly Version

Interactive Discussion





**Fig. 2.** AS-TDMA schematic and experimental procedure illustration. The configuration and results for the DF, EF and Drying process are shown in red, green and blue, respectively. The grey elements of the schematic represent RH Probes. The procedure illustration depicts AS-TDMA operation on a hypothetical aerosol found in a more hydrated state at 65 % RH. Its hydration characteristics are illustrated in the upper-left chart. The arrows in the upper left and lower left depict the manipulations of RH achieved in the Nafion tube bundles. The resultant size distributions produced by the process measurements are shown in upper-right corner. In the lower-right, an example taken from the winter study period is displayed. Shown along the right edge is a compact convention for displaying the results.

## Measurement of ambient aerosol hydration state

N. F. Taylor et al.

Title Page

Abstract

Introduction

Conclusions

References

Tables

Figures

◀

▶

◀

▶

Back

Close

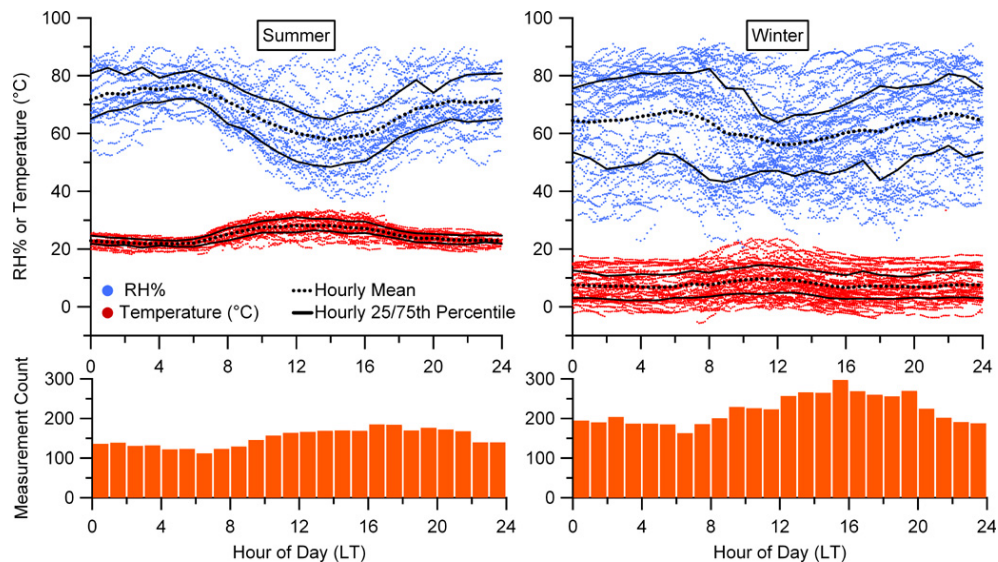
Full Screen / Esc

Printer-friendly Version

Interactive Discussion

## Measurement of ambient aerosol hydration state

N. F. Taylor et al.

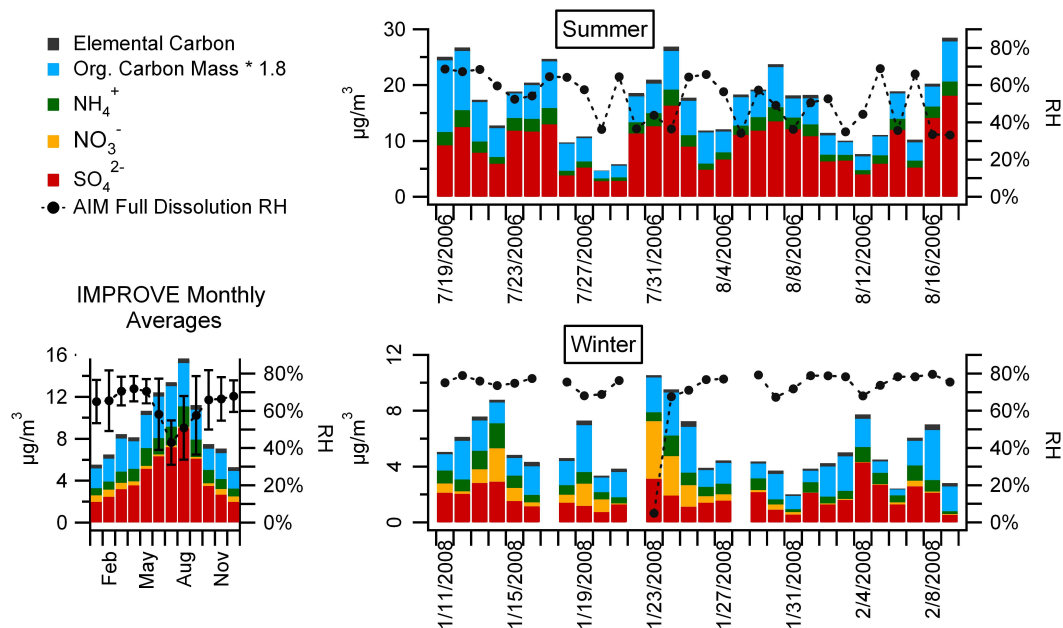


**Fig. 3.** Diurnal temperature, RH and measurement frequency. Each colored point in the RH and temperature plots is the average value during a single EF, DF or Drying process measurement. A point exists for every measurement during each study. The cessation of operation beyond certain RH and  $T$  limits discussed at the end of Sect. 2.2 produces corresponding artifacts, e.g., few RH points above 90 %. The bottom charts show the diurnal measurement frequency, counting each size distribution recorded.

[Title Page](#)
[Abstract](#)
[Introduction](#)
[Conclusions](#)
[References](#)
[Tables](#)
[Figures](#)
[Back](#)
[Close](#)
[Full Screen / Esc](#)
[Printer-friendly Version](#)
[Interactive Discussion](#)

## Measurement of ambient aerosol hydration state

N. F. Taylor et al.



**Fig. 4.** Daily  $\text{PM}_{2.5}$  Filter based measurements made on site at Look Rock near Great Smoky Mountains National Park from Lowenthal et al. (2009) and the IMPROVE network. IMPROVE values are computed as the average of all days within each month during the period from 1997–2006 in which  $\text{NH}_4^+$  ions were measured. The black traces showing expected full dissolution RH were calculated for the measured sulfate/nitrate/ammonium proportions using the Aerosol Inorganics Model (AIM).

Title Page

Abstract

Introduction

Conclusions

References

Tables

Figures

◀

▶

◀

▶

Back

Close

Full Screen / Esc

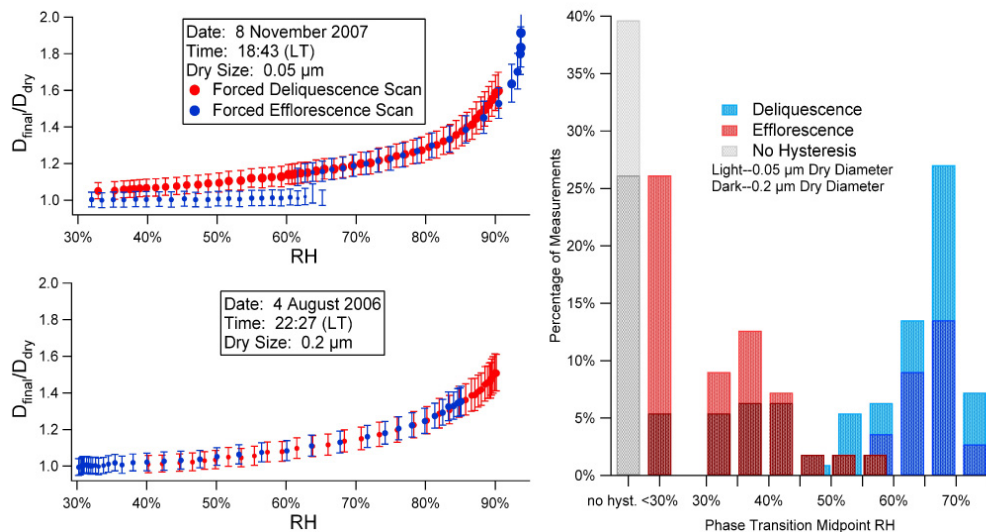
Printer-friendly Version

Interactive Discussion



**Measurement of ambient aerosol hydration state**

N. F. Taylor et al.



**Fig. 5.** H-TDMA example scans and winter H-TDMA detected phase transition summary. The points in the H-TDMA scans follow the convention established at the end of Sect. 2.3.1.

Title Page

Abstract	Introduction
Conclusions	References
Tables	Figures

⏪      ⏩  
⏴      ⏵

Back	Close
------	-------

Full Screen / Esc

Printer-friendly Version

Interactive Discussion



**Measurement of ambient aerosol hydration state**

N. F. Taylor et al.

Title Page

Abstract Introduction

Conclusions References

Tables Figures

◀ ▶

◀ ▶

Back Close

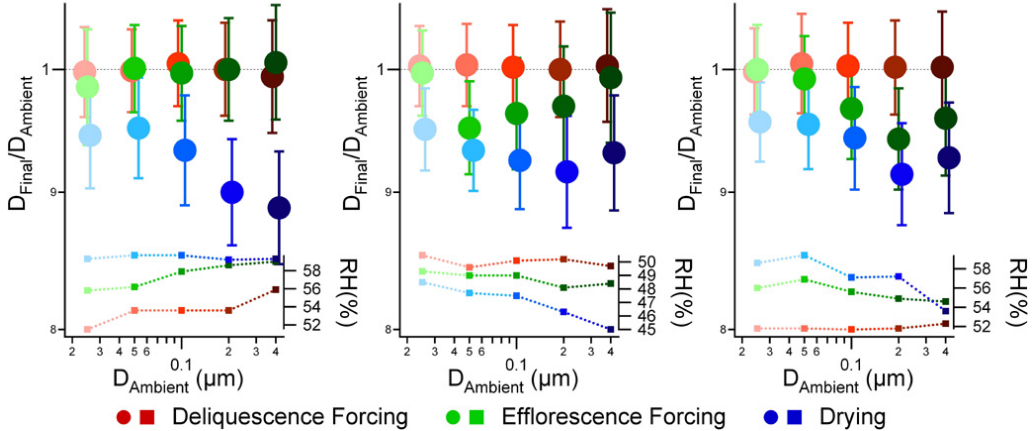
Full Screen / Esc

Printer-friendly Version

Interactive Discussion



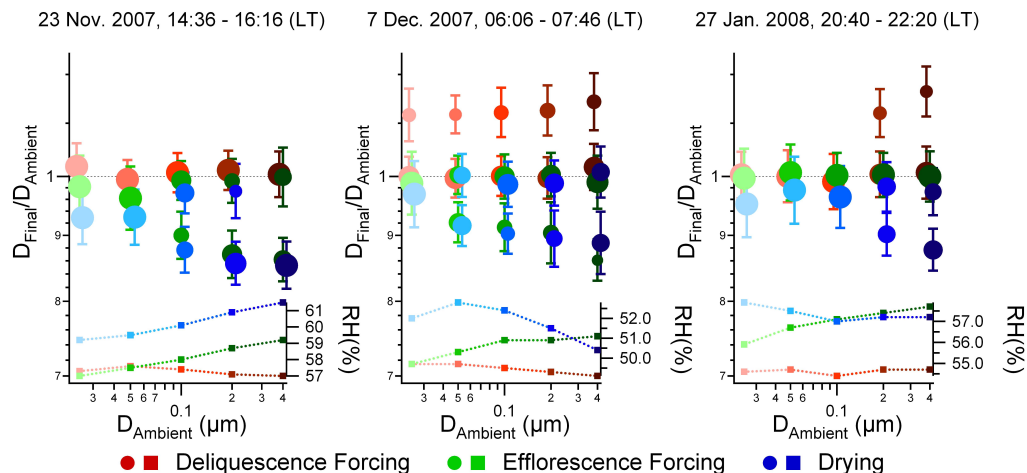
14 August 2006, 17:08 - 18:48 (LT)    9 August 2006, 12:14 - 13:54 (LT)    25 July 2006, 15:01 - 16:41 (LT)



**Fig. 6.** The results of three AS-TDMA full measurement cycles from the summer campaign. The point and error bar markers follow the convention described in Sect. 2.3.1: each point characterizes a mode in the size distribution. The size of the point reflects the relative contribution of the mode to the concentration of particles having that ambient diameter; the vertical position depicts the characteristic ratio of post-process to ambient size of particles in the mode; and the error bars describe the breadth of the mode. Below the measurement results is the ambient RH during each measurement. The slight lateral offset between the results from each process is artificial and for clarity only. The transition in color saturation from left to right is intended to correspond to ambient size and is included in anticipation of its use in the subsequent time series depictions.

## Measurement of ambient aerosol hydration state

N. F. Taylor et al.



**Fig. 7.** Results of three AS-TDMA full measurement cycles from the winter campaign. The point and error bar markers follow the convention described in Sect. 2.3.1.

Title Page

Abstract

Introduction

Conclusions

References

Tables

Figures

◀

▶

◀

▶

Back

Close

Full Screen / Esc

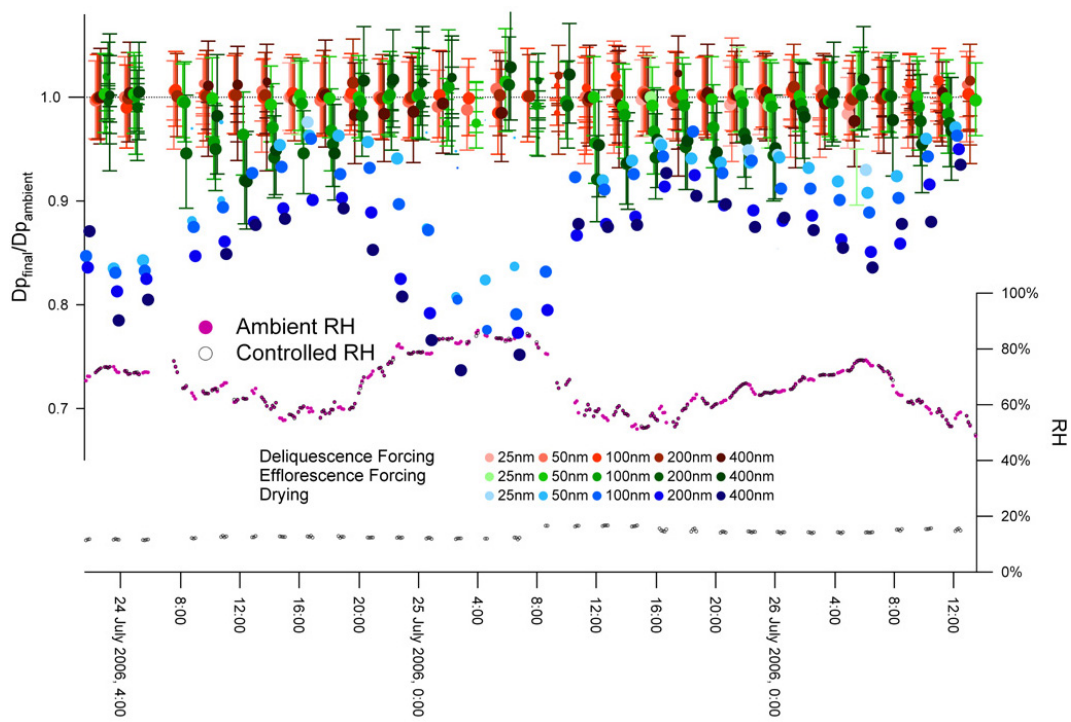
Printer-friendly Version

Interactive Discussion



**Measurement of ambient aerosol hydration state**

N. F. Taylor et al.



**Fig. 8.** A time series of AS-TDMA measurements from the summer campaign. The point and error bar markers follow the convention described in Sect. 2.3.1. The mode breadth indicators are left off the Drying results to improve clarity.

Title Page

Abstract

Introduction

Conclusions

References

Tables

Figures

◀

▶

◀

▶

Back

Close

Full Screen / Esc

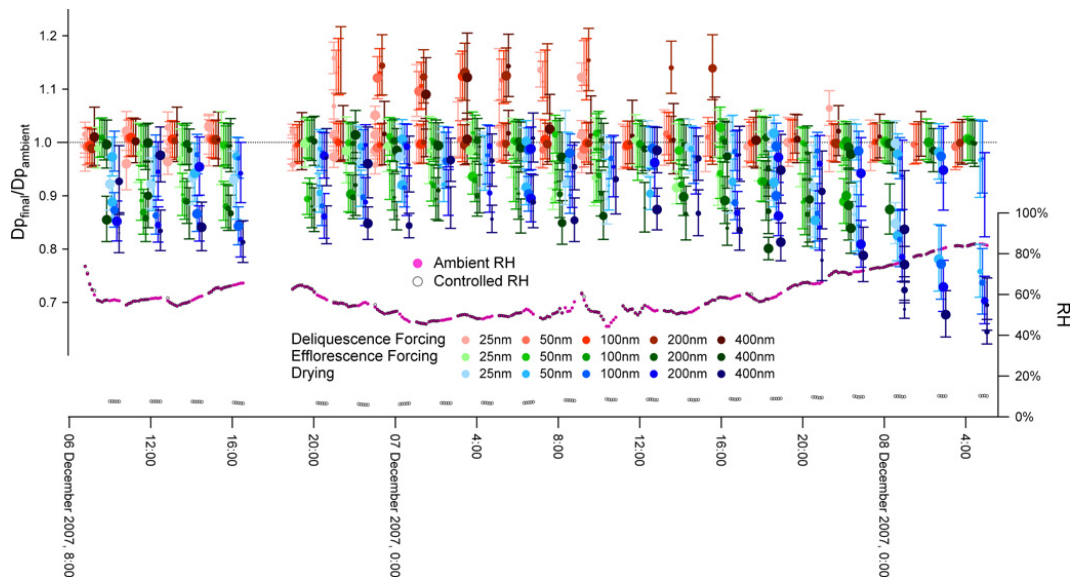
Printer-friendly Version

Interactive Discussion



## Measurement of ambient aerosol hydration state

N. F. Taylor et al.



**Fig. 9.** A time series of AS-TDMA measurements from the winter campaign. The point and error bar markers follow the convention described in Sect. 2.3.1.

Title Page

Abstract

Introduction

Conclusions

References

Tables

Figures



Back

Close

Full Screen / Esc

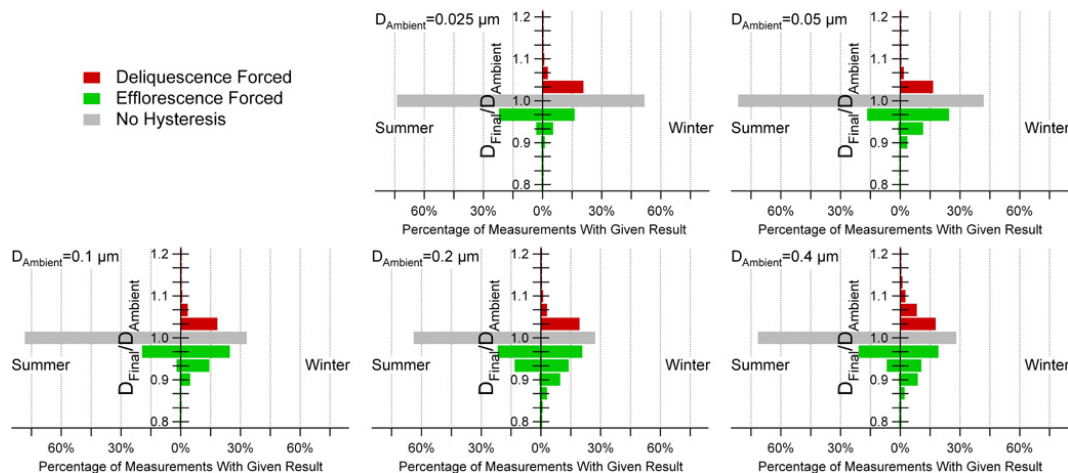
Printer-friendly Version

Interactive Discussion



## Measurement of ambient aerosol hydration state

N. F. Taylor et al.



**Fig. 10.** Deliquescence and Efflorescence Forcing measurement summaries for the summer and winter campaigns.

Title Page

Abstract

Introduction

Conclusions

References

Tables

Figures

◀

▶

◀

▶

Back

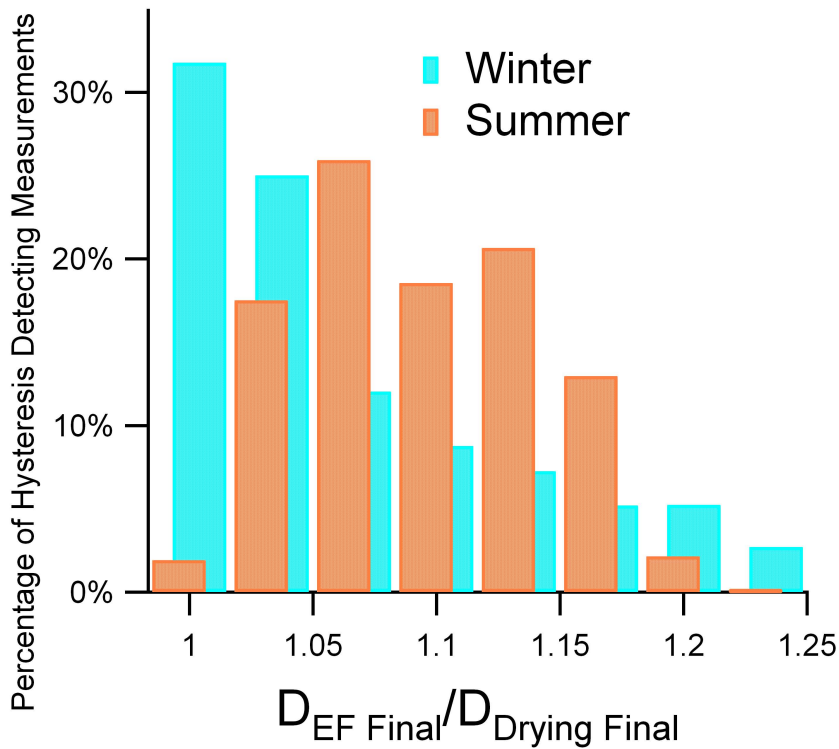
Close

Full Screen / Esc

Printer-friendly Version

Interactive Discussion





**Fig. 11.** The variation in residual water content of the less hydrated state between the two studies.

**Measurement of ambient aerosol hydration state**

N. F. Taylor et al.

Title Page

Abstract Introduction

Conclusions References

Tables Figures

◀ ▶

◀ ▶

Back Close

Full Screen / Esc

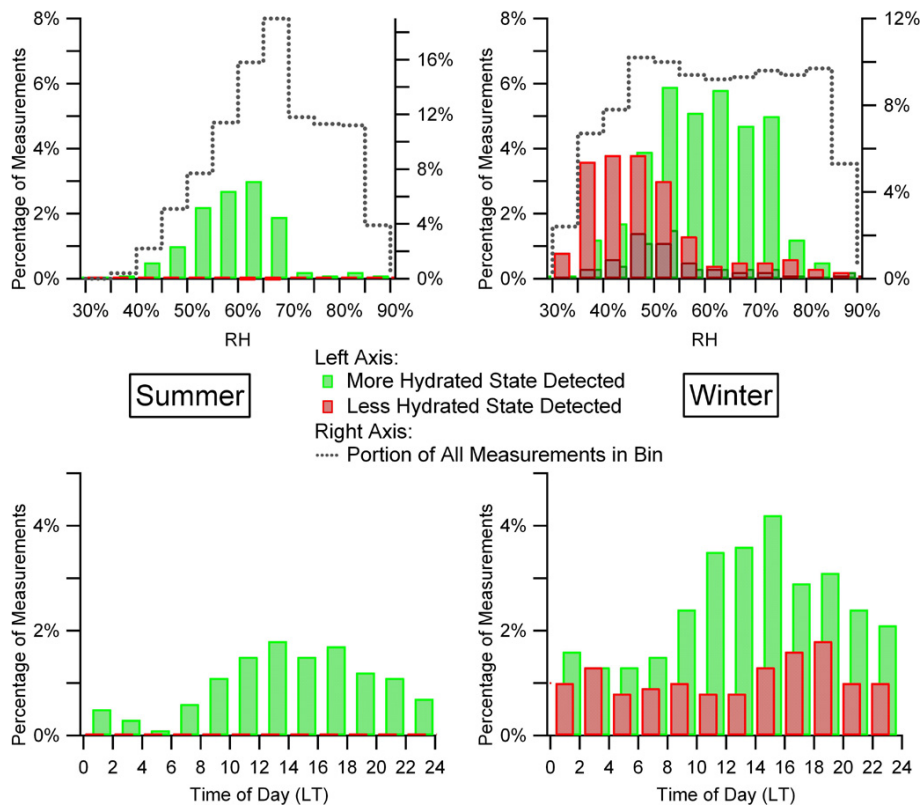
Printer-friendly Version

Interactive Discussion



**Measurement of ambient aerosol hydration state**

N. F. Taylor et al.



**Fig. 12.** Frequency plots of hysteresis detection versus RH and time-of-day for summer and winter campaigns. The darker portion of the bars in the winter RH plot indicates fractions detected in coincidence with the alternative hydration state.

Title Page

Abstract

Introduction

Conclusions

References

Tables

Figures

◀

▶

◀

▶

Back

Close

Full Screen / Esc

Printer-friendly Version

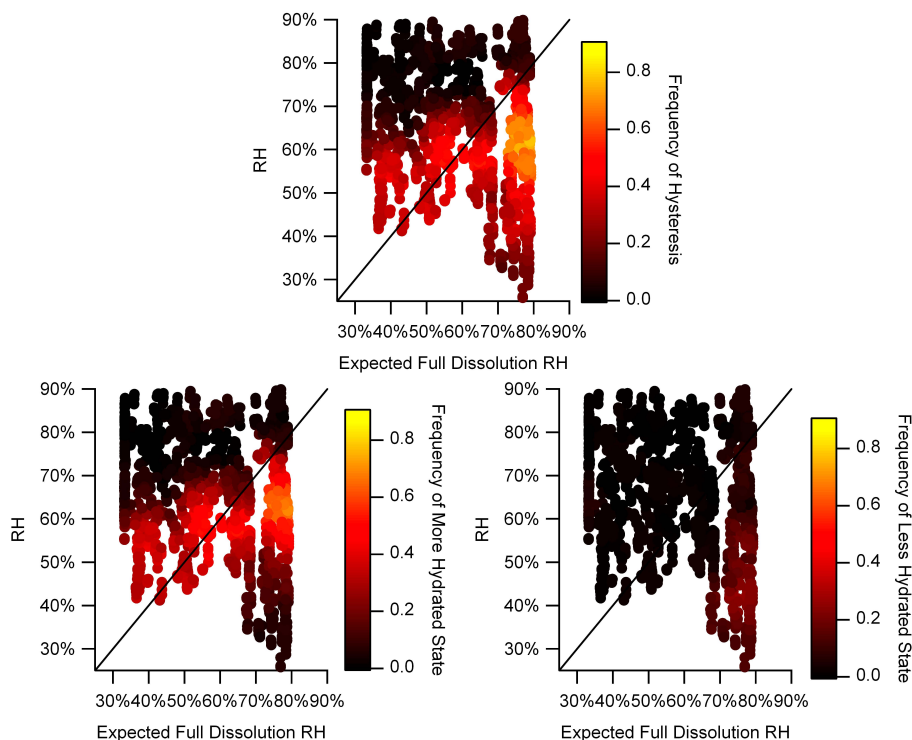
Interactive Discussion





## Measurement of ambient aerosol hydration state

N. F. Taylor et al.



**Fig. 13.** Hysteresis detection versus the ambient RH during measurement and filter determined composition based estimates of deliquescence RH. The upper chart indicates frequency of any hysteresis detection, while the lower two treat each state individually. Every measurement from both campaigns is plotted based on the interpolated AIM estimate of dissolution RH and ambient RH at the time it is conducted. The frequency at each point is calculated as the fraction of the nearest 80 measurements that detect either (or both) hydration state, depending on the plot.

Title Page

Abstract

Introduction

Conclusions

References

Tables

Figures

◀

▶

◀

▶

Back

Close

Full Screen / Esc

Printer-friendly Version

Interactive Discussion

