

**Ice nucleation on
volcanic ash**

C. R. Hoyle et al.

This discussion paper is/has been under review for the journal Atmospheric Chemistry and Physics (ACP). Please refer to the corresponding final paper in ACP if available.

Ice nucleation properties of volcanic ash from Eyjafjallajökull

C. R. Hoyle¹, V. Pinti¹, A. Welti¹, B. Zobrist¹, C. Marcolli¹, B. Luo¹,
Á. Höskuldsson², H. B. Mattsson³, T. Thorsteinsson², G. Larsen², and T. Peter¹

¹Institute for Atmospheric and Climate Science, ETH Zurich, Zurich, Switzerland

²Institute of Earth Sciences, University of Iceland, Reykjavik, Iceland

³Institute for Geochemistry and Petrology, ETH Zurich, Zurich, Switzerland

Received: 10 May 2011 – Accepted: 10 June 2011 – Published: 21 June 2011

Correspondence to: C. R. Hoyle (chris.hoyle@env.ethz.ch)

Published by Copernicus Publications on behalf of the European Geosciences Union.

Title Page

Abstract

Introduction

Conclusions

References

Tables

Figures

◀

▶

◀

▶

Back

Close

Full Screen / Esc

Printer-friendly Version

Interactive Discussion



Abstract

The ice nucleation ability of volcanic ash particles collected close to the Icelandic volcano Eyjafjallajökull during its eruptions in April and May 2010 is investigated experimentally, in the immersion and deposition modes, and applied to atmospheric conditions by comparison with airborne measurements and microphysical model calculations. The number of ash particles which are active as ice nuclei (IN) is strongly temperature dependent, with a very small minority being active in the immersion mode at temperatures of 250–263 K. Average ash particles show only a moderate effect on ice nucleation, by inducing freezing at temperatures between 236 K and 240 K (i.e. approximately 3–4 K higher than temperatures required for homogeneous ice nucleation, measured with the same instrument). By scaling the results to aircraft and lidar measurements of the conditions in the ash plume days down wind of the eruption and by applying a simple microphysical model, it was found that the IN active in the immersion mode in the range 250–263 K generally occurred in atmospheric number densities at the lower end of those required to have an impact on ice cloud formation. However, 3–4 K above the homogeneous freezing point, immersion mode IN number densities a few days down wind of the eruption were sufficiently high to have a moderate influence on ice cloud formation. The efficiency of IN in the deposition mode was found to be poor except at very cold conditions (< 238 K), when they reach an efficiency similar to that of mineral dust with the onset of freezing at 10 % supersaturation with respect to ice, and with the frozen fraction nearing its maximum value at a supersaturation 20 %. In summary, these investigations suggest volcanic ash particles to have only moderate effects on atmospheric ice formation.

Ice nucleation on volcanic ash

C. R. Hoyle et al.

Title Page

Abstract

Introduction

Conclusions

References

Tables

Figures

◀

▶

◀

▶

Back

Close

Full Screen / Esc

Printer-friendly Version

Interactive Discussion



1 Introduction

There is a range of studies in which the influence of active volcanoes on heterogeneous ice nucleation in the atmosphere has been examined. These studies have resulted in varied conclusions, suggesting that volcanoes are a source of good ice nuclei (IN) (e.g., Isono et al., 1959), that volcanoes are not a source of IN (e.g., Schnell and Delany, 1976), or even that background IN can be deactivated as a result of volcanic activity (e.g., Langer et al., 1974).

There are many factors which may affect the results of such investigations, for example, the geology of the volcano, the gases emitted during the eruption, the type of the eruption and phase during which the measurements were made, or the presence of non-volcanic matter in the plume (e.g. vegetation burnt during the eruption). Further, the experimental method used to detect IN and the freezing mechanism investigated in the experiments may lead to differing results.

Elevated IN concentrations were observed with an IN counter during the eruptions of the volcanoes Mihara and Asama in Japan, by Isono et al. (1959). Langer et al. (1974) conducted measurements with an NCAR IN counter on ash collected near an active vent of a Hawaiian volcano, as well as of crushed lava, and smoke from burnt vegetation. They found enhanced IN concentrations during eruption periods, but also deactivation of IN in a gas-rich volcanic cloud. It was later found by Hussain and Saunders (1984) that the membrane filter technique used by Langer et al. (1974) leads to a low bias in IN concentrations, as water is taken up by hygroscopic particles on the filter.

During the M-PACE campaign in Alaska in 2004, Prenni et al. (2009) found enhanced IN concentrations in air which had passed directly over the active Shiveluch volcano in Kamchatka approximately 80 h before the measurements, and suggest this may indicate IN activity of volcanic ash. However, the mineral composition of the IN also matched that of Asian mineral dust. Ice nucleation via contact and immersion freezing was investigated by Shaw et al. (2005), using individual ash particles with diameters

Ice nucleation on volcanic ash

C. R. Hoyle et al.

Title Page

Abstract

Introduction

Conclusions

References

Tables

Figures



Back

Close

Full Screen / Esc

Printer-friendly Version

Interactive Discussion



Ice nucleation on volcanic ash

C. R. Hoyle et al.

[Title Page](#)[Abstract](#)[Introduction](#)[Conclusions](#)[References](#)[Tables](#)[Figures](#)[◀](#)[▶](#)[◀](#)[▶](#)[Back](#)[Close](#)[Full Screen / Esc](#)[Printer-friendly Version](#)[Interactive Discussion](#)

between 100 μm and 300 μm , placed onto or inserted into a single water droplet, leading to freezing temperatures of approximately 251 K for immersion freezing and 254–255 K for contact freezing. Fornea et al. (2009) performed immersion freezing and inside-out contact freezing measurements using individual 250 μm and 300 μm diameter particles of Mount St. Helens volcanic ash, finding contact freezing temperatures of ca. 262 K, with a range from approximately 261 K to 265 K between experiments with different particles. However, whether inside-out contact freezing is fully comparable with the outside-in mechanism in the atmosphere remains uncertain. They also found immersion freezing to occur at around 253–257 K. Freezing onsets of between 250 K and 260 K are suggested by Durant et al. (2008), for ash particles in the size range 1–1000 μm , based on a review of literature values, as well as their own single particle measurements. They also tested a few different mineral compositions but found no strong effect of the composition of ash on the nucleation efficiency.

Aerosols collected during the eruption of Mount St. Helens in 1980 were investigated, by Schnell et al. (1982), for several modes of IN activation (contact, deposition, immersion and a combination of immersion and contact freezing). They found that at concentrations of 3000 $\mu\text{g m}^{-3}$, the ash contained only few IN active at temperatures warmer than 262 K, and at concentrations lower than 500 $\mu\text{g m}^{-3}$, the IN activity of the ash was indistinguishable from background levels.

Samples of volcanic particles were collected on filters during several measurement flights by Schnell and Delany (1976). The samples were investigated for condensation and/or deposition freezing in a thermal diffusion chamber, however no enhancement in IN over the atmospheric background was detected. Limited evidence was found to support the hypothesis that volcanic gases deactivate ambient IN. The filter technique used by Schnell and Delany (1976) is the same as that of Langer et al. (1974) and therefore also expected to be subject to a low bias in IN measurements (Hussain and Saunders, 1984).

Here we investigate the ice nucleation characteristics of ash collected during the recent eruption of Eyjafjallajökull on Iceland. Bulk freezing experiments were carried out

with a differential scanning calorimeter (DSC). Immersion and deposition freezing was investigated with the Zurich ice nucleation chamber (ZINC), and its vertical extension Immersion Mode Cooling Chamber (IMCA), described by Lüönd et al. (2010).

The next section describes the ash samples, instruments and measurement methods used and the results of the experiments are presented and discussed in Sect. 4. Section 5 provides a summary and conclusion.

2 The ash samples

Two similar samples of ash from the April 2010 eruption of Eyjafjallajökull on Iceland were analysed. The first of these was collected approximately 58 km from the eruption, as the ash fell, on the morning of 15 April. This sample was provided by the Institute of Earth Sciences at the University of Iceland, and was named “Sample 15.04.10-2b” by them. For simplicity, we designate it “Ey0”. Its composition is expected to be the same as that of the second sample, which was subjected to a more detailed analysis. The second sample, which we name “Ey1”, was collected by a television film crew at Seljavellir (approximately 8 km south of the active vent on 11 May 2010) and is fine grained with a median grain-size of 550 μm . The sample was collected by using a knife to separate the fresh layer of ash from older layers, as it was deposited on the ground. The grain-size distribution of the ash is similar to that typically produced by volcanic eruptions involving explosive interaction with an external water source, so called phreatomagmatic eruptions (Zimanowski et al., 1997). Furthermore, looking at the surface morphology of individual ash particles from Eyjafjallajökull (i.e. the main vent) it is clear the samples are dominated by blocky, to equant-shaped, particles with overall low vesicularity and many adhered smaller particles (Fig. 1a). These features are also consistent with typical ash particles generated in phreatomagmatic eruptions (Heiken and Wohletz, 1985; Zimanowski et al., 1997; Dellino et al., 2001).

This is in sharp contrast to the ashes produced in the beginning of the eruption (at the Fimmvörduháls vents), in the time before the Ey0 and Ey1 samples were collected.

Ice nucleation on volcanic ash

C. R. Hoyle et al.

Title Page

Abstract

Introduction

Conclusions

References

Tables

Figures

◀

▶

◀

▶

Back

Close

Full Screen / Esc

Printer-friendly Version

Interactive Discussion



Ice nucleation on volcanic ash

C. R. Hoyle et al.

Title Page

Abstract

Introduction

Conclusions

References

Tables

Figures

◀

▶

◀

▶

Back

Close

Full Screen / Esc

Printer-friendly Version

Interactive Discussion



These ash particles are considerably coarser and show cusped, convex-concave shapes with high vesicularity and smooth outer surfaces characteristic of traditional magmatic fragmentation (Heiken and Wohletz, 1985; Dellino et al., 2001). These initial ashes represent a dry stage of the eruption, in which no melting of ice took place.

Phreatomagmatic ashes were first produced, when the eruption locus shifted to the ice-covered Eyjafjallajökull vent.

The fragmentation efficiency in phreatomagmatic volcanic eruptions determines how much fine-ash is produced. This is largely controlled by the temperature contrast between the magma and the water, and the efficiency of mixing between the two (and is not dependent on the chemical composition of the magma itself; Zimanowski et al., 1997). The ash samples used in this study can thus be regarded as being representative for material produced in most volcanic eruptions involving explosive interaction with an external water source (i.e., subglacial-, shallow submarine- and lacustrine settings). The significant degree of phreatomagmatic fragmentation, forming fine grained particles, combined with the high eruption plume, lead to the wide spread transport of the ash from Eyjafjallajökull. The large particle in Fig. 1a, owing to its size, will sediment by about 2 km h^{-1} , and can therefore not reach large distances from the vent. In contrast, the small particles in Fig. 1a, magnified in Fig. 1c, will sediment only about 10 m h^{-1} , and therefore, if carried to sufficient height within the eruption plume, can be transported over continental distances by the atmospheric winds. Similar particles have indeed been found in Central Europe, e.g. see Fig. 1b and d from a pollen sampler in Zurich, Switzerland.

The Ey1 ash sample was only available to us after it had been sieved through a mesh with $40 \mu\text{m}$ holes, however particles larger than $40 \mu\text{m}$ will have a relatively short atmospheric residence time. Aside from this sieving, the Ey1 sample is expected to be similar to the Ey0 sample. The size distribution of ash particles smaller than $300 \mu\text{m}$ in the Ey0 sample was measured with the Sympatec HELOS laser diffraction sensor after dispersion with the RODOS dry dispersing unit. The size distribution is shown in Fig. 2.

Ice nucleation on volcanic ash

C. R. Hoyle et al.

[Title Page](#)[Abstract](#)[Introduction](#)[Conclusions](#)[References](#)[Tables](#)[Figures](#)[◀](#)[▶](#)[◀](#)[▶](#)[Back](#)[Close](#)[Full Screen / Esc](#)[Printer-friendly Version](#)[Interactive Discussion](#)

The size distribution of Ey0 is similar to that of two other ash samples, collected on the 17 and 18 April 2010, approximately 20 km from the eruption (which are not shown and which we did not examine further in this study). This suggests a relatively high degree of homogeneity in the size distribution of ash at least during the early part of the eruption. The number of ash particles increases rapidly towards smaller sizes, with 2 μm particles being two orders of magnitude more common than 10 μm particles. Particles larger than approximately 50 μm in diameter are not likely to have a large scale effect on cloud formation, as they have settling velocities of greater than approximately 0.5 km h^{-1} . In comparison, air parcel trajectories show the average transit time between Eyjafjallajökull and central Europe, during April 2010, to be on the order of 2.5 days.

3 Experimental methods

3.1 Differential scanning calorimeter (DSC)

The bulk freezing experiments were performed with a differential scanning calorimeter (TA instruments Q10), using polychlorotrifluoroethylene (PCTFE) coated sample pans, into which a few milligrams of a suspension of pure water (made with distilled and deionized water, 18.2 M Ω) containing the ash was placed with a pipette. The coating ensures a minimal interaction of water and ash in the pan with its surface. Freezing of the suspension sample was detected by the associated latent heat release. The DSC temperature calibration was performed with water, adamantane, cyclohexane, ammonium sulphate and indium, leading to an accuracy of the reported freezing temperatures of ± 1.2 K (Zobrist et al., 2008). The precision in freezing temperature is better than 0.2 K. The onset of the heat flow peak was taken as the ice nucleation temperature, similarly to studies with the same instrument, using emulsions (Zobrist et al., 2006).

3.2 Deposition nucleation measurements with the ZINC

The ZINC is a parallel plate continuous flow diffusion chamber. It consists of a nucleation section, where high relative humidity (RH) can be maintained, followed by an evaporation section, which is held at ice saturation, where any liquid droplets formed in the nucleation section may evaporate (described in detail by Stetzer et al., 2008). For experiments with the ZINC, the volcanic ash sample was aerosolised using a fluidised bed aerosol generator (TSI Model 3400A), the last stage of which is a cyclone particle separator with a cut off diameter of 3 μm . The efficiency of the ash particles to act as IN in the deposition mode was investigated by measuring the number of particles which activated as IN and formed ice crystals while passing through ZINC and comparing it to the total particle concentration in the sample flow. The sample stream exiting the evaporation section is passed through an optical particle counter (OPC, CLiMET CI-3100), where the number of ice particles nucleated can be determined. To unambiguously distinguish ice crystals from ash particles by size in the OPC data, an additional impactor with a cut-off of 1 μm , was superposed prior to ZINC for the deposition experiments but not for the immersion experiments. The measurement and the detection of ice activated fraction are similar to the procedure reported by Welte et al. (2009).

3.3 Immersion freezing measurements with the IMCA/ZINC

The aerosol is generated as described in the previous section. For the immersion mode experiments the aerosol is first activated as cloud condensation nuclei (CCN) under warm, supersaturated conditions in IMCA. The design and functional details of IMCA are described by Lüönd et al. (2010). The particles are then fed into the ZINC, where the droplets, each with a single immersed ash particle, are exposed to cold, water saturated conditions. The frozen fractions of the droplets at different temperatures were measured after the nucleation section of ZINC by the depolarisation detector IODE (Ice Optical Detector) described in the work of Nicolet et al. (2010).

Ice nucleation on volcanic ash

C. R. Hoyle et al.

Title Page

Abstract

Introduction

Conclusions

References

Tables

Figures

◀

▶

◀

▶

Back

Close

Full Screen / Esc

Printer-friendly Version

Interactive Discussion



4 Results and discussion

The two experiments, bulk DSC and IMCA/ZINC single particle measurements, are complementary to each other. Bulk suspension DSC experiments are sensitive to the the best IN, since one nucleation event causes the freezing of the whole sample. Average IN cannot be characterised, as they will be masked by the rare better ones. Conversely, IMCA/ZINC investigates freezing of droplets containing typically only one ash particle, i.e. it is suited to measure the effects of the many average IN, however due to uncertainties in the discrimination of ice from ash particles it is not sensitive to very low frozen fractions and will therefore miss the rare best IN. Parallel application of both methods allows us to investigate IN activity over a wide range of temperatures and frozen fractions, although there is a “blind range” of fair IN in moderately high number densities, which are difficult to detect with either of the methods.

4.1 Bulk DSC experiments

A series of experiments were run with the bulk freezing configuration described in Sect. 3.1. In bulk experiments, the whole suspension sample freezes when the first ice nucleus is formed, therefore the measurement is sensitive to *the best ice nucleus* contained in a sample. Up to ten cooling and warming cycles were run for each sample of a suspension, and the resulting freezing temperatures, T_f , along with those for pure water, were used to create the box and whisker plots shown in Fig. 3. Each box and whisker plot represents the results obtained from an “experimental run”, i.e. the 8–10 cooling and warming cycles performed with a particular sample. The upper and lower borders of the box are given by the upper and lower quartile, respectively, and the horizontal line in the middle of the box shows the value of the median. The highest and lowest values in a particular experimental run are shown by the ends of the whiskers. Several experimental runs were made with samples of the same suspension, to test the reproducibility of the results between samples. Each set of experiments is separated by a vertical line in Fig. 3. The details of the different suspensions are given

Ice nucleation on volcanic ash

C. R. Hoyle et al.

Title Page

Abstract

Introduction

Conclusions

References

Tables

Figures

◀

▶

◀

▶

Back

Close

Full Screen / Esc

Printer-friendly Version

Interactive Discussion



in Table 1. No systematic change in T_f was detected during the individual experimental runs. This shows that the freezing process does not change the quality of the IN.

Despite the utmost care being taken to ensure cleanliness during the sample preparation, minor impurities and interactions between the sample and the walls of the pan in the DSC cannot be avoided. These typically lead to higher nucleation temperatures, between ca. 249 K and 253.5 K, as can be seen by the temperatures from the pure water freezing experiments. Therefore, ash suspension freezing below ca. 254 K cannot be firmly attributed to ice nucleation on an ash particle.

Samples of the Ey1 5 wt% suspension produced T_f between about 251 K and 257 K, while the Ey0 5 wt% suspension led to T_f as low as ca. 252.5 K and as high as 263.5 K. These higher freezing temperatures compared with the pure water case show that for these samples and suspension concentrations heterogeneous nucleation on ash surfaces is the dominant nucleation process. Freezing temperatures between 250–260 K are in agreement with freezing onsets reported by Durant et al. (2008) for bulk freezing experiments with volcanic ash samples from different locations. For a particular experimental run, the variation in the T_f was up to 3–4 K reflecting the stochasticity of the freezing process. The much larger spread in T_f , among different experimental runs with samples prepared from the same suspension (e.g. 11 K in the case of the Ey0 5 wt% suspension) indicates that there are differences in IN activity between samples taken from the same suspensions. This suggests that there are a few very rare particles, which are significantly better IN than the other ash particles. The smaller variation of the freezing temperature during a particular experimental run suggests that the same few particles are responsible for nucleation throughout that experimental run.

4.1.1 Experiments with settled or diluted samples

Further experimental runs were performed using suspensions of Ey0, where gravitational settling was used to achieve different particle size distributions in the suspension. Stokes' law was used to calculate the sedimentation velocity of the different sized ash particles assuming a density of 2.65 g cm^{-3} (Schumann et al., 2011). Accordingly, the

Ice nucleation on volcanic ash

C. R. Hoyle et al.

Title Page

Abstract

Introduction

Conclusions

References

Tables

Figures

◀

▶

◀

▶

Back

Close

Full Screen / Esc

Printer-friendly Version

Interactive Discussion



Ice nucleation on volcanic ash

C. R. Hoyle et al.

Title Page

Abstract

Introduction

Conclusions

References

Tables

Figures

◀

▶

◀

▶

Back

Close

Full Screen / Esc

Printer-friendly Version

Interactive Discussion



suspension was allowed to settle for 2 h 30 min in order to draw off a sample containing only particles smaller than approximately 1 μm . This value is only approximate as the density of the ash particles varies (some of the particles even floated), however it can still be assumed that the larger particles are excluded from the suspension. In these two experimental runs (column 4 of Fig. 3, suspension Ey0 0.05 wt% < 1 μm), T_f is near the upper end of the range of the pure water experimental runs. When the Ey0 0.5 wt% suspension was used, T_f decreases to that of pure water. Comparing these T_f with the considerable higher ones of the 5 wt% suspensions shows that the most efficient IN are removed by a dilution of the suspension by a factor of 10. We can therefore conclude that there were only on the order of 1–10 IN present in the 5 wt% suspensions that caused freezing above ca. 255 K. Using the size distribution shown in Fig. 2, we estimate that around 10^6 particles were present in the samples of 5 wt% suspension, so that only about one in a million particles causes freezing at such high temperatures.

4.1.2 Experiments with Arizona test dust

For comparison, two experimental runs, performed under the same conditions as for the ash, were carried out using samples of a suspension containing 5 wt% of Arizona test dust (ATD). The median freezing temperatures for the two ATD experimental runs were 267.5 K and 268.5 K with ranges of 267.1–267.7 K and 268.4–268.8 K, respectively. The fact that T_f is so reproducible between the two ATD experimental runs (which used different samples of the same suspension) suggests that, in contrast to the ash, there are very many IN present, which cause freezing at similar temperatures.

4.1.3 Dependence on ash surface area density

The surface area of the ash in each experiment using the Ey0 sample was estimated from the mass and size distribution shown in Fig. 2, and grouping all the experiments with samples of the same suspension together, the median freezing temperature as a function of ash surface area was plotted (Fig. 4). There is a clear trend of increasing

Ice nucleation on volcanic ash

C. R. Hoyle et al.

[Title Page](#)[Abstract](#)[Introduction](#)[Conclusions](#)[References](#)[Tables](#)[Figures](#)[I◀](#)[▶I](#)[◀](#)[▶](#)[Back](#)[Close](#)[Full Screen / Esc](#)[Printer-friendly Version](#)[Interactive Discussion](#)

T_f with increasing ash surface, however, the error bars (representing the highest and lowest T_f for a particular suspension) are too large to say if this increase scales only with total surface area, or if larger particles lead to disproportionately higher T_f . The T_f , for particular surface areas, found in this study are comparable with values published by Shaw et al. (2005), Durant et al. (2008) and Fornea et al. (2009) (coloured symbols in Fig 4). A similar calculation was carried out for ATD. The surface area of ATD in the sample was 1.03 cm^2 and the median T_f 268 K (not shown). Note that while the wt% of ATD in the suspension is similar to that for the ash samples, the surface area is far higher. This means that for the DSC experiments, we can not exclude the possibility that the higher T_f found for ATD is related to the higher surface area present in the sample.

The measured freezing temperature for the pure water sample is shown by the light blue circle. The homogeneous nucleation temperature, shown as a light error bar, was calculated as the temperature at which a pure water bulk sample with a volume of $2.5 \times 10^{-9} \text{ m}^3$ reaches a nucleation rate of 0.1 s^{-1} . The error bar spans between the T_f calculated using the nucleation rates of Zobrist et al. (2007), at ca. 239 K, and T_f calculated using the parameterization given by Earle et al. (2010), at ca. 242 K.

Note that classical nucleation theory predicts a considerably weaker increase of freezing temperature with increasing total surface area than the one observed experimentally.

4.1.4 Atmospheric number densities of *best IN*

In situ measurements of the ash plume have recently been published, showing that with a plume age of 1–2 days, an upper limit for the particle size is around $20 \mu\text{m}$ (Schumann et al., 2011). In 1–2 days, particles of this size sediment by 1–2 km, which is a significant fraction of the original plume height, i.e. larger particles will likely have been eliminated. Both 5 wt% and 0.5 wt% suspensions of the Ey0 ash were prepared, and these were then allowed to settle for the time required for particles of $20 \mu\text{m}$ and larger to sediment out (approximately 57 s for the 5 wt% suspension, which had a depth

Ice nucleation on volcanic ash

C. R. Hoyle et al.

[Title Page](#)[Abstract](#)[Introduction](#)[Conclusions](#)[References](#)[Tables](#)[Figures](#)[◀](#)[▶](#)[◀](#)[▶](#)[Back](#)[Close](#)[Full Screen / Esc](#)[Printer-friendly Version](#)[Interactive Discussion](#)

of 2 cm, and 100 s for the 0.5 wt% suspension, which had a depth of 3.5 cm), assuming the ash has a density of 2.65 g cm^{-3} . After settling, the estimated suspension concentration was 2 wt% and 0.2 wt%, respectively, and these samples were therefore named Ey0 2 wt% < 20 μm and Ey0 0.2 wt% < 20 μm . The results for these experiments are also plotted in Fig. 3. In the Ey0 2 wt% < 20 μm experimental runs, T_f ranged from ca. 251.5 K to ca. 258 K, with most of the freezing points obtained being higher than the highest pure water freezing point measured. In the Ey0 0.2 wt% < 20 μm experimental runs on the other hand, T_f was mostly comparable to that of pure water, except in two cases, where freezing values were up to 255 K and 257.5 K.

Using the weight fractions for the different particle sizes in Fig. 2, the amount of ash in a sample can now be calculated and related to the amount of ash in an air parcel within the ash plume that was present over Europe. For this analysis, we choose three sets of measurements. The first are aircraft based measurements, using a combination of optical particle counters, reported by Schumann et al. (2011). These measurements were made over the Baltic Sea and Skagerrak, and correspond to the 1–2 day transit times assumed, for which the upper particle size of 20 μm was measured. In the analysis presented here, we use the mass densities which they calculated assuming a refractive index of $1.59 + 0.004i$.

The second set of measurements were made over Zurich, during the 17 April 2010, with a Leosphere ALS 450 elastic backscatter lidar operating at 355 nm wavelength. The extinction to mass conversion factor needed to calculate mass density was found to range between 0.65 g m^{-2} and 1 g m^{-2} , from additional simultaneous recordings of the optical backscatter at 455 nm and 870 nm by a balloon borne sonde. To this end, statistical modelling of the optical properties was performed, assuming a bimodal size distribution that represented sulphate and ash contributions in the plume. The measurements indicated an upper limit of $600 \mu\text{g m}^3$ for the plume mass density at an altitude of 3 km over Zurich during 17 April 2010 (Wienhold, 2011).

Finally, we made use of aircraft measurements performed over Biel, Switzerland, on the 18 May 2010. These measurements were made aboard the DIMO research

Ice nucleation on volcanic ash

C. R. Hoyle et al.

Title Page

Abstract

Introduction

Conclusions

References

Tables

Figures

◀

▶

◀

▶

Back

Close

Full Screen / Esc

Printer-friendly Version

Interactive Discussion



aircraft operated by Metair AG (Switzerland). A Grimm 1.108 optical particle counter was used, and assuming a density of 2.65 g cm^{-3} for the coarse mode particles, the mass density in the ash layer observed on the 18 May 2010 at an altitude of 3500–4500 m was calculated to be an average of $320 \mu\text{g m}^{-3}$ (with minimum and maximum values of $200 \mu\text{g m}^{-3}$ and $520 \mu\text{g m}^{-3}$, respectively).

To relate the DSC measurements to the atmospheric observations, we take the mass of ash in the sample used in the bulk experiments, and divide by the mass density of the measured ash particles measured. This gives us the volume of air throughout which the mass of ash in the bulk sample would have been spread. Now, based on the measurements shown in Fig. 3, we can state that within that volume of air, approximately 1–10 IN were present, which would have nucleated ice at the temperature observed in the DSC measurements. The corresponding number densities of ash IN are listed in Table 2.

As an example, the median freezing temperature of the settled Ey0 2 wt% < 20 μm suspension shown in Table 2 is 254.0 K (ranging from 251.4 K to 258 K). The mass density of the particles measured in the ash plume over the Skagerrak was 0.16 mg m^{-3} (Schumann et al., 2011), while the mass of ash in the suspension was 0.049 mg. This means the ash in the suspension would have been dispersed throughout approximately 0.3 m^3 of air over the Skagerrak, and if we assume that only *one single best IN* in the suspension was responsible for freezing in this temperature range, the number density of this sort of IN, in the atmosphere, is calculated to be $3.3 \times 10^{-6} \text{ cm}^{-3}$. This value could be up to about a factor of 10 higher, given that there are 1–10 IN with similar properties in most samples of the suspension analysed. Similar calculations were carried out for the Baltic Sea case, and due to the lower mass loading of ash in the observations, the calculated IN number densities are roughly an order of magnitude lower than for the Skagerrak.

The same procedure was repeated with measurements of the ash plume made during the 17 April 2010 over Zurich, Switzerland, and on the 18 May, 2010 over Biel, Switzerland.

The atmospheric implications following from the number densities of best IN in Table 2 and the surface area dependence of T_f in Fig. 4 will be further explored in Sect. 4.4 using trajectory analysis.

4.2 ZINC immersion freezing results

Complementary to the bulk freezing experiments discussed above, immersion freezing of the Ey0 sample was investigated with the IMCA/ZINC, between 230 K and 247 K. The fraction of frozen droplets at each temperature is plotted in Fig. 5 (orange triangles). These measurements were performed on water droplets containing immersed ash particles exposed to supercooled, water saturated conditions. For comparison, homogeneous nucleation experiments were performed, using 200 nm and 800 nm (dry diameter) ammonium sulphate particles instead of the ash sample. These particles then activated to cloud droplets, with estimated diameters of 6 μm , which froze homogeneously between 233 K and 236 K. The slight difference in freezing temperature between the two different initial sizes of salt particle are due to the freezing point depression caused by the higher concentration of ammonium sulphate in the droplets formed from the 800 nm particles.

After applying a correction to account for the small remaining freezing point depression of the dissolved salt in the droplets, the resulting homogeneous nucleation rate coefficients between temperatures of 233 K and 236 K are plotted in Fig. 6, along with those from other studies. There are few measurements available at the lower end of the temperature range, with the data from Earle et al. (2010) being an extrapolation of measurements made down to approximately 235 K. The slope of the new IMCA/ZINC measurements is slightly less than that of the Earle et al. (2010) data (green line in Fig. 6), and while the data are very similar at 235–235.5 K, where Earle et al. (2010) performed measurements, at lower temperatures the IMCA/ZINC data shows a slower increase of nucleation rate coefficient with decreasing temperature than the extrapolation provided by Earle et al. (2010). The fact that the nucleation rate coefficients derived from IMCA/ZINC measurements match well with previous measurements gives further

Ice nucleation on volcanic ash

C. R. Hoyle et al.

Title Page

Abstract

Introduction

Conclusions

References

Tables

Figures

◀

▶

◀

▶

Back

Close

Full Screen / Esc

Printer-friendly Version

Interactive Discussion



credibility to the ice formation measurements we present here and ensures that freezing above 236 K can be attributed to a heterogeneous nucleation process.

Figure 5 shows that heterogeneous freezing on the volcanic ash particles occurs between 236–240 K. There is a 3–4 K difference between the temperature required to freeze 20 % of the droplets homogeneously vs. heterogeneously on the volcanic ash. The frozen fraction increases more rapidly with decreasing temperature in the homogeneous case, as the nucleation rate is typically a steeper function of temperature for homogeneous than for heterogeneous nucleation, most probably because the variability in the quality of IN in the heterogeneous case leads to a range of T_f (e.g., Marcolli et al., 2007; Zobrist et al., 2007). At the high temperature end of the freezing curves, the frozen fraction of the volcanic ash sample remains at a slightly higher value than the one of the ammonium sulfate droplets. This should not be taken as indication for the presence of ice particles, rather the non-zero measurement is caused by the depolarisation cutoff above which particles are considered to be frozen. Not only the ice particles, but also the ash and dust particles return a slightly depolarised signal, leading to a false frozen particle signal.

The IMCA/ZINC has also previously been used by Lüönd et al. (2010) to investigate the immersion freezing of droplets containing size-selected kaolinite particles. They found frozen fractions of 20 % at approximately 241 K for 800 nm particles (dashed black line in Fig. 5), and 239–240 K for 200 nm particles. The Ey0 sample, on the other hand, resulted in a 20 % frozen fraction at around 238–239 K, showing that the volcanic ash has a lower IN activity than that of similarly sized, or even smaller, mineral dust particles. Furthermore, results for ATD are shown in Fig. 5, displaying an even less steep temperature dependence and higher ice nucleation temperatures than for the ash.

The results shown in Fig. 5 demonstrate that the *average* volcanic ash particle does lead to heterogeneous freezing of cloud droplets, but at temperatures only slightly above the homogeneous freezing threshold. We will examine the atmospheric implications of these average IN using trajectory analysis in Sect. 4.4.

Ice nucleation on volcanic ash

C. R. Hoyle et al.

Title Page

Abstract

Introduction

Conclusions

References

Tables

Figures

◀

▶

◀

▶

Back

Close

Full Screen / Esc

Printer-friendly Version

Interactive Discussion



4.3 ZINC deposition nucleation results

4.3.1 ZINC ash and mineral dust deposition mode measurements

The IN activity of the ash was investigated in the deposition mode, in order to determine if this ice formation pathway could be important in the atmosphere. The fraction of ice coated (i.e. activated) particles for deposition mode experiments with the Ey0 sample is shown in Fig. 7 (orange triangles), as a function of relative humidity with respect to ice (RH_{ice}). Only a very small fraction of the ash particles lead to deposition mode ice nucleation at the warmer temperatures, however the ash becomes increasingly efficient as the temperature decreases. At 248 K and 243 K no deposition mode IN activity can be observed before water saturation is reached (vertical dashed grey line). When water saturation is exceeded, a slight increase of the frozen fraction hints at a small fraction of particles showing condensation or immersion freezing after CCN activation. At 238 K and 233 K, the activated fraction increases continuously as water saturation is approached, and again shows a further stepwise increase when water saturation is exceeded. This indicates that the ash particles, in terms of their average IN behaviour above water saturation, are better immersion mode than deposition mode IN, whereas at lower RH_{ice} there is an ability of a small minority of the particles to act as deposition nuclei.

For temperatures of 228 K and 223 K, the activated fraction reaches almost its maximum value at $RH_{ice} = 120\%$, and only increases slightly thereafter, with further increasing humidity. In these two cases, no additional increase in activated fraction is observed as water saturation is reached. The maximum activated fraction at any temperature for this sample is approximately 10%, which is mainly to do with the 12 s residence time in the ZINC. For longer residence times we would expect a higher activated fraction. To put these measurements into perspective, we compare with measurements made for mineral dusts under similar experimental conditions (Welti et al., 2009), using size selected, 800 nm mineral dust particles. Figure 7 shows the results for different clay minerals (montmorillonite, kaolinite, Arizona test dust (ATD) and illite). At 228 K and

Ice nucleation on volcanic ash

C. R. Hoyle et al.

Title Page

Abstract

Introduction

Conclusions

References

Tables

Figures

◀

▶

◀

▶

Back

Close

Full Screen / Esc

Printer-friendly Version

Interactive Discussion



Ice nucleation on volcanic ash

C. R. Hoyle et al.

[Title Page](#)[Abstract](#)[Introduction](#)[Conclusions](#)[References](#)[Tables](#)[Figures](#)[◀](#)[▶](#)[◀](#)[▶](#)[Back](#)[Close](#)[Full Screen / Esc](#)[Printer-friendly Version](#)[Interactive Discussion](#)

223 K, the threshold RH_{ice} of volcanic ash for ice freezing is comparable with the one of ATD and the frozen fraction is slightly smaller, while the different clay minerals show a lower threshold RH_{ice} and a higher frozen fraction than the volcanic ash. However, the IN efficiency of the volcanic ash strongly deteriorates with increasing temperatures turning it into an overall poor IN compared to the mineral dusts.

Note that the ZINC deposition mode experiment shows by far a higher sensitivity to low fractions of frozen particles than the ZINC/IMCA immersion mode experiments. This is due to the different detection methods used in the experimental set up. Taking into account the different detection limits depending on measurement techniques there is in fact no disagreement between freezing temperatures found in bulk DSC, ZINC/IMCA water droplet and ZINC deposition mode freezing measurements exceeding water saturation.

4.3.2 Particle size considerations

It should be noted that aside from the effects of the equipment used to pass the ash into the IMCA/ZINC, the ash was not size selected. The peak in the number distribution of the particles was at approximately $1 \mu\text{m}$, however, a range of diameters were present. This makes quantitative comparison between the mineral dust and ash in Fig. 7 difficult, however larger particles tend to be better nuclei, therefore if anything, the quality of the ash as a deposition ice nucleus, in comparison with mineral dust particles, is even poorer than suggested by Fig. 7.

A comparison with measurements made at 220–224 K by Moehler et al. (2006), using mineral dusts with lognormal size distributions and mode diameters of $0.3 \mu\text{m}$ to $0.5 \mu\text{m}$, shows that the volcanic ash studied here proves to be a more efficient deposition IN than these sizes of Asian dust and Saharan dust particles, but leads to ice formation at similar saturations as the ATD particles.

Interestingly, the volcanic ash particles studied here seem to be rather poor CCN at cold temperatures. This is suggested by the fact that in the immersion mode experiments, at 238 K, the frozen fraction is ca. 30 %, however the activated fraction in

the deposition experiments only increases to 0.5 % when water saturation is reached at this temperature. The same holds at 233 K, where nearly all particles immersed in droplets should activate. However, the measurements show an activated fraction of only 10–20 % of the ash particles. The next two sections will shed further light on the atmospheric impacts of these particles.

4.4 Trajectory analysis

Air parcel trajectories were used to determine if the ash was likely to be involved in immersion or deposition freezing. Approximately 135 000 seven day forward trajectories were calculated based on ECMWF meteorological analyses using the trajectory model LAGRANTO (Wernli and Davies, 1997). The trajectories were initialised every three hours from 15 April 2010 to 30 April 2010, on a three dimensional grid running from 63.13° N to 64.13° N and 339.4° E to 341.4° E, and spanning 18 pressure levels from 800 hPa to 150 hPa. This corresponds approximately to a box with sides of 100 km, centred on the volcano, and extending from an altitude of approximately 2 km to approximately 14 km. Similar to Wiacek et al. (2010), the water vapour mixing ratio was taken from the analyses at the first trajectory point, and held fixed for the remainder of the trajectory, so that the relative humidity with respect to ice was calculated while avoiding complicating effects from the ECMWF cloud formation algorithm. It should further be noted that any water vapour added to the atmosphere by the eruption is not accounted for. The distribution of the trajectory points is shown in Fig. 8 as a function of temperature and RH_{ice} . Although the great majority of the trajectory points are sub-saturated with respect to ice and are not involved in cloud forming processes, approximately 49 % of the trajectories eventually reached ice saturation (approximately 33 % reached water saturation). Approximately 5.6 % of the points are found in the regions between ice and water saturation where heterogeneous nucleation of ice may principally occur, or on the water saturation curve (approximately 11.7 %, the points above this line would collapse onto it if water condensation was properly accounted for).

Ice nucleation on volcanic ash

C. R. Hoyle et al.

Title Page

Abstract

Introduction

Conclusions

References

Tables

Figures

◀

▶

◀

▶

Back

Close

Full Screen / Esc

Printer-friendly Version

Interactive Discussion



Ice nucleation on volcanic ash

C. R. Hoyle et al.

[Title Page](#)[Abstract](#)[Introduction](#)[Conclusions](#)[References](#)[Tables](#)[Figures](#)[I◀](#)[▶I](#)[◀](#)[▶](#)[Back](#)[Close](#)[Full Screen / Esc](#)[Printer-friendly Version](#)[Interactive Discussion](#)

The number of trajectories crossing the ice or water saturation line are shown in Fig. 9, as a function of the temperature at which they cross. Only the first crossing point was counted, trajectories which oscillate between super-saturated and sub-saturated conditions are not counted more than once. Of the trajectories reaching ice saturation, almost exactly half did so in the regime of cold cirrus clouds at temperatures below 233 K, where ice nuclei are likely to become active in the deposition mode as RH_{ice} increases. The other half reached ice saturation at warmer temperatures in the regime of mixed-phase clouds and so-called “warm ice clouds” (Wiacek et al., 2010), where the ash is a relatively poor deposition nucleus. Water saturation was reached by approximately 16 % of the trajectories at temperatures below 233 K and by approximately 17 % at temperatures of 233 K and higher. Trajectories reaching water saturation in the warmer temperature range may enable ash to influence the formation of mixed-phase clouds and lead to immersion mode nucleation of ice.

The temperature at which ice saturation is reached generally depends on the starting pressure of the trajectories (dot-dashed line in Fig. 9). On average, the lower the starting pressure (i.e. the higher the starting altitude), the colder the temperature at which ice (or water) saturation is reached. The average starting pressure of trajectories reaching ice saturation at temperatures below 233 K is approximately 400 hPa or lower (ca. 6.4 km altitude and higher). During the initial phase of the eruption of Eyjafjallajökull, the plume height reached altitudes of up to 10 km, however this reduced relatively rapidly to altitudes of 4–6 km for the remainder of April (Schumann et al., 2011). Therefore, for most of the eruption, the ash would have followed trajectories reaching ice saturation at temperatures above 233 K, and immersion freezing would have been the most likely mechanism by which ash would have been involved in ice formation. Any increased water vapour content of the air due to the eruption would lead to saturation at higher temperatures, making it even less likely that a substantial number of the ash containing trajectories reach deposition freezing conditions.

4.5 Atmospheric implications

The injection of volcanic ash into an air parcel may lead to increased dehydration via heterogeneous freezing at higher temperatures and sedimentation of the ice particles. This in turn can lead to reductions in cloud formation in the dehydrated air masses. The importance of this effect depends not only on the efficiency of the ash particles as IN, but on their abundance in comparison with ambient IN. In order to make a conservative estimate of the importance the ash has for atmospheric dehydration, we assume that the ash is the only IN present, and we apply a simple microphysical column model, which assumes that ash-induced ice nucleation has happened at some altitude and then calculates the dehydration (and at lower altitudes, rehydration) caused by the sedimenting ice particles.

The model tracks the sedimentation of a mono-disperse population of ice particles through a column of air, allowing for the growth and evaporation of the particles at the different model layers. The model was initialised with an upper boundary of 5 km and a temperature of 256.0 K on the upper model level. Below this level, a vertical resolution of 1 m was used throughout a 1000 m layer, and the temperature and pressure were set for each layer assuming a dry adiabatic lapse rate. The whole column was initialised with a water vapour mixing ratio of 3312 ppmv, so that at an altitude of 5 km, ($T = 256$ K), RH_{ice} was approximately 120 %.

A 2 km thick ash layer above the top of the model was assumed, which corresponds to one of the thickest ash layers observed by Schumann et al. (2011). The ash particles were assumed to have an initial infinitesimally thin coating of ice and a diameter of 1 μm . Various number densities of these particles were then allowed to fall through the column. The resulting change in water vapour is plotted in Fig. 10, for ice number densities between $1 \times 10^{-4} \text{ cm}^{-3}$ and $1 \times 10^{-1} \text{ cm}^{-3}$. At the top of the model column, the particles fall slowly, and remain in a layer long enough to take up larger quantities of water from the gas phase. At the top of Fig. 10, the lines converge to a water vapour fraction of approximately 0.83, which corresponds to a saturation with respect

Ice nucleation on volcanic ash

C. R. Hoyle et al.

[Title Page](#)[Abstract](#)[Introduction](#)[Conclusions](#)[References](#)[Tables](#)[Figures](#)[◀](#)[▶](#)[◀](#)[▶](#)[Back](#)[Close](#)[Full Screen / Esc](#)[Printer-friendly Version](#)[Interactive Discussion](#)

Ice nucleation on volcanic ash

C. R. Hoyle et al.

Title Page

Abstract

Introduction

Conclusions

References

Tables

Figures

I◀

▶I

◀

▶

Back

Close

Full Screen / Esc

Printer-friendly Version

Interactive Discussion



to ice of approximately 1.0. As the particles grow, they sediment faster, depleting the gas phase of the layers they pass through less and less. In addition, the supersaturation decreases with decreasing altitude. At an altitude of approximately 4770 m, the column becomes subsaturated and the ice particles begin to evaporate. Low number densities of particles can quickly reach large sizes and sediment rapidly, however cause little dehydration due to their scarcity. Above number densities of approximately $1 \times 10^{-4} \text{ cm}^{-3}$, a significant dehydration begins to occur. If the ash layer is however only 100 m thick, for example, significant dehydration begins to occur at number densities above $1 \times 10^{-3} \text{ cm}^{-3}$ (not shown). Very similar results are obtained for a model top altitude of 6 km, temperature of 240 K and water mixing ratio of 770 ppmv (not shown). As IN numbers increase, the available water vapour is spread over more ice particles and these therefore remain smaller and sediment less rapidly. However even at the highest number densities shown in Fig. 10, the average fall speed of the lower edge of the ash plume which enters the supersaturated column is around 1.2 km h^{-1} , therefore dehydration is efficient. The highest number density shown in Fig. 10 leads to complete dehydration of the super saturated part of the column.

For the number densities of the efficient ash IN shown in Table 2, this means that the atmospheric effects would be negligible. The particles would nucleate ice at comparatively high temperatures, rapidly grow, and sediment without any substantial effect on atmospheric water vapour.

On the other hand, the ash particles studied in the IMCA/ZINC (Fig. 5) had a size distribution peaking at around $1 \mu\text{m}$, and as shown in Fig. 2, particles below approximately $2 \mu\text{m}$ diameter make up the vast majority of the ash particles. The particle number densities reported by Schumann et al. (2011) attributable to ash range from approximately 1 cm^{-3} to 20 cm^{-3} , which is by far high enough for the gas phase water to be substantially depleted when these particles nucleate ice. Therefore in the absence of high numbers of better IN, the formation of ice by ash, as shown in Fig. 5, will lead to depletion of the gas phase at temperatures approximately 3–4 K above those required for homogeneous freezing.

5 Summary and discussion

5.1 Rare, efficient ash IN compared with typical tropospheric IN

Bulk and single particle measurements show that ash particles from the April–May 2010 eruption of Eyjafjallajökull, Iceland, act as ice nuclei in both the immersion and deposition freezing modes. The bulk measurements exhibit a large variation in the freezing temperature in mixed suspensions, which suggests the presence of very rare, but efficient IN. Both the variation in freezing temperature, as well as the freezing temperature itself decrease when the concentration of the solution is reduced, providing further evidence for the rarity of these most efficient IN. A general dependence of freezing temperature on the surface area of ash in the suspension is found, with larger available surface areas leading to higher freezing temperatures. The highest freezing temperature measured in the DSC for the ash was at ca. 263.5 K, with the median freezing temperature for Ey0 5 wt% ash suspension being 258.5 K. For comparison, experiments with a 5 wt% ATD suspension gave a freezing temperature of approximately 268.0 K. The atmospheric number density of the best IN from the bulk DSC experiments was estimated by scaling the DSC results to atmospheric measurements of the ash plume 1–2 days down wind of the eruption, and was found to be generally low, namely only ca. $3.3 \times 10^{-6} \text{ cm}^{-3}$ to $3.3 \times 10^{-5} \text{ cm}^{-3}$ for particles causing freezing at 251–258 K, when scaled to measurements made over the Skagerrak. Scaling to measurements made over Zurich, Switzerland, led to number densities approximately a factor of 3 higher, those over the Baltic Sea lead to even lower number densities. These values can be compared with measurements of free tropospheric IN concentrations. Typical tropospheric IN concentrations at temperatures warmer than 235 K were found to range from 10^{-4} cm^{-3} to 10^{-1} cm^{-3} , with the higher concentrations generally being related to lower temperatures and higher super-saturations (Rogers et al., 1998). Concentrations of more than 1 cm^{-3} were measured with a continuous-flow diffusion chamber (CFDC) by DeMott et al. (2003b) in a mineral dust plume, and DeMott et al. (2003a) report concentrations of between approximately $1 \times 10^{-3} \text{ cm}^{-3}$ to 0.1 cm^{-3} at

Ice nucleation on volcanic ash

C. R. Hoyle et al.

Title Page

Abstract

Introduction

Conclusions

References

Tables

Figures

◀

▶

◀

▶

Back

Close

Full Screen / Esc

Printer-friendly Version

Interactive Discussion



Ice nucleation on volcanic ash

C. R. Hoyle et al.

Title Page

Abstract

Introduction

Conclusions

References

Tables

Figures

◀

▶

◀

▶

Back

Close

Full Screen / Esc

Printer-friendly Version

Interactive Discussion



temperatures warmer than 238 K, where heterogeneous nucleation is the only possible ice formation mechanism. During the INSPECT-II campaign at Storm Peak in 2004, Richardson et al. (2007) measured IN concentrations of $1 \times 10^{-3} \text{ cm}^{-3}$ to $1 \times 10^{-2} \text{ cm}^{-3}$ active at temperatures from 223 K to 258 K, which should be representative of the ambient free troposphere. IN concentrations of between approximately $1 \times 10^{-4} \text{ cm}^{-3}$ and $1 \times 10^{-2} \text{ cm}^{-3}$ are presented in DeMott et al. (2010), for temperatures between approximately 250 K and 265 K. Although they show a few measurements of IN concentrations as low as $1 \times 10^{-5} \text{ cm}^{-3}$ at temperatures around 243 K, generally the IN concentrations between 238 K and 250 K lie in the range $1 \times 10^{-3} \text{ cm}^{-3}$ to $1 \times 10^{-1} \text{ cm}^{-3}$.

Therefore, within 1–2 days transport time from the eruption plume, the estimated concentrations of ash particles active as IN in the temperature range $> 251 \text{ K}$ are smaller than the lower end of the ambient IN concentrations, for all locations considered in Table 2. Calculations performed with a microphysical column model show that number densities of IN below approximately $1 \times 10^{-4} \text{ cm}^{-3}$ for an ash layer thickness of approximately 2 km do not lead to a significant dehydration of the atmosphere, and even higher ash number densities are needed to cause dehydration if the ash cloud is thinner.

Interestingly, Bingemer et al. (2011) find the highest IN concentrations in their 2 yr daily measurement time series, near Frankfurt, during the Eyjafjallajokull eruption (0.05 cm^{-3} to 0.25 cm^{-3} with a peak over 0.6 cm^{-3}). Their measurements were made at temperatures between 255 K and 265 K, and suggest that the volcanic ash from the Eyjafjallajokull eruption indeed contains a much higher number of IN active in this temperature range than estimated from our DSC experiments. The number densities reported by Bingemer et al. (2011) also contrast with our deposition mode experiments carried out at 248 K, which show no IN activity below water saturation, and an active IN concentration of $3 \times 10^{-4} \text{ cm}^{-3}$ above water saturation. Using accumulation mode number densities of the non-volatile aerosol fraction in the range of $1\text{--}5 \text{ cm}^{-3}$, as reported by Schumann et al. (2011), our IN concentrations measured during the deposition mode experiments translate to an active IN concentration of only

$3 \times 10^{-2} \text{ cm}^{-3} - 1.5 \times 10^{-3} \text{ cm}^{-3}$. There is therefore a clear difference between the IN concentrations reported by Bingemer et al. (2011) and those presented here. However, the IN number densities measured by Bingemer et al. (2011) were not consistently enhanced during all of the ash episodes, suggesting the ash did not always contain large concentrations of IN. This may be related to a strong variation in the quality of IN emitted at different times during the eruption, or it may suggest an unknown atmospheric process which can lead to an increase in the IN activity of the ash during transport. Furthermore, the concentration of IN measured by Bingemer et al. (2011) was higher than usual during the second half of April, also in the absence of volcanic ash, hinting at the contribution of other aerosol sources to some fraction of the measured IN concentration.

Part of the sample 15.04.10-2b (which we refer to as EY0 here), was also obtained by Steinke et al. (2011), who investigated its IN properties in the AIDA (Aerosol Interaction and Dynamics in the Atmosphere) cloud chamber. They find an onset of immersion freezing (a frozen fraction of 0.1 %) at 249 K, and a frozen fraction of 2 % at 245 K. These measurements are interesting because they fit in the blind range of temperatures between our DSC and IMCA/ZINC measurements. Below 240 K, Steinke et al. (2011) observed only deposition freezing, whereas the IMCA/ZINC measurements show a rapid increase in the frozen fraction, due to immersion freezing, as temperature decreases between 240 K and 236 K. As discussed above, in the IMCA/ZINC immersion freezing measurements, frozen fractions below approximately 10 % cannot be detected, therefore it is not possible to directly compare our immersion freezing measurements with those of Steinke et al. (2011). However, our deposition mode measurements are comparable with theirs, and produce extremely similar frozen fractions as a function of RH_{ice} .

Ice nucleation on volcanic ash

C. R. Hoyle et al.

Title Page

Abstract

Introduction

Conclusions

References

Tables

Figures

◀

▶

◀

▶

Back

Close

Full Screen / Esc

Printer-friendly Version

Interactive Discussion



5.2 Average ash IN compared with typical tropospheric IN

The immersion mode experiments, which were carried out with IMCA/ZINC, provide data on the *average IN*, expressed as the frozen fraction of particles as a function of temperature, in contrast to the DSC experiments, which are only sensitive to the best IN in a sample. The IMCA/ZINC experiments show that average ash particles cause a ca. 3–4 K increase in the ice nucleation temperature with respect to homogeneous freezing of cloud droplets produced by CCN activation of ammonium sulphate particles. Due to the large number densities of ash particles in the volcanic plume, at plume ages of a few days or less, the heterogeneous ice nucleation at 3–4 K above the homogeneous freezing temperature may substantially deplete the gas phase water.

The ZINC deposition freezing experiments show that at temperatures above the homogeneous freezing threshold of pure water, the volcanic ash is a much poorer deposition IN compared with mineral dusts. For temperatures of 228 K and 223 K, the frozen fraction reaches almost its maximum value at $RH_{ice} = 120\%$. At these low temperatures, the volcanic ash indeed turns into a deposition mode IN with efficiencies comparable to the ones of mineral dusts.

The accumulation and coarse mode particle number densities measured by Schumann et al. (2011), in the ash plume over the Skagerrak and the Baltic Sea came to around 1 cm^{-3} , therefore if this ash plume had encountered temperatures lower than 238 K, the deposition mode experiments would suggest an IN concentration of between $1.0 \times 10^{-3}\text{ cm}^{-3}$ and 0.1 cm^{-3} , which is comparable to measurements of free tropospheric IN concentrations.

An analysis of seven day forward air parcel trajectories from the site of the eruption shows that for the longest period of the eruption when the ash ejected to heights below 4–6 km, ash would mostly have encountered ice, and water saturation at relatively warm temperatures (above 233 K). Therefore, for the greatest part of this particular eruption, immersion freezing would have been the dominant influence of the ash. Further, it is likely that as the ash plume aged, the particles obtained a coating of sulphuric

Ice nucleation on volcanic ash

C. R. Hoyle et al.

Title Page

Abstract

Introduction

Conclusions

References

Tables

Figures

◀

▶

◀

▶

Back

Close

Full Screen / Esc

Printer-friendly Version

Interactive Discussion



acid and water. This would further suppress deposition freezing (Cziczo et al., 2009; Chernoff and Bertram, 2010; Sullivan et al., 2010).

In summary, while we find evidence for efficient IN among the ash particles, 1–2 days down wind of the eruption they were not present in concentrations high enough to have an impact on atmospheric water vapour or cloud formation. Conversely, average IN, leading to freezing 3–4 K above temperatures required for homogeneous nucleation were likely present in high number concentrations a few days down wind of the eruption, and could have led to modifications of cloud formation, such as an advanced onset of glaciation, slightly reduced optical depths of the resulting ice clouds, and dehydration. Immersion freezing would have been the most likely mechanism for this ice nucleation.

Acknowledgements. C. R. H. was partly funded by SNSF grant number 200021.120175/1. B. Z. thanks the European Commission through the EC Integrated Project RECONCILE (226365-FP7-ENV-2008-1). V. P. acknowledges support by NCCR Climate. We would like to thank Olaf Stetzer and Felix Lüönd for their valuable contribution during discussions. We would like to thank Barbara Pietragalla of MeteoSchweiz for the pictures of ash particles in the pollen sampler, used in Fig. 1, as well as for the useful discussions relating to these pictures.

References

- Bingemer, H., Klein, H., Ebert, M., Haunold, W., Bundke, U., Herrmann, T., Kandler, K., Müller-Ebert, D., Weinbruch, S., Judt, A., Ardon-Dryer, K., Levin, Z., and Curtius, J.: Atmospheric ice nuclei in the Eyjafjallajökull volcanic ash plume, *Atmos. Chem. Phys. Discuss.*, 11, 2733–2748, doi:10.5194/acpd-11-2733-2011, 2011. 17224, 17225
- Bukowiecki, N., Zieger, P., Weingartner, E., Jurányi, Z., Gysel, M., Neiningner, B., Schneider, B., Hueglin, C., Ulrich, A., Wichser, A., Henne, S., Brunner, D., Kaegi, R., Schwikowski, M., Tobler, L., Wienhold, F. G., Engel, I., Buchmann, B., Peter, T., and Baltensperger, U.: Ground-based and airborne in-situ measurements of the Eyjafjallajökull volcanic aerosol plume in Switzerland in spring 2010, *Atmos. Chem. Phys. Discuss.*, 11, 12949–13002, doi:10.5194/acpd-11-12949-2011, 2011. 17233
- Chernoff, D. I. and Bertram, A. K.: Effects of sulfate coatings on the ice nucleation properties

Ice nucleation on volcanic ash

C. R. Hoyle et al.

Title Page

Abstract

Introduction

Conclusions

References

Tables

Figures

◀

▶

◀

▶

Back

Close

Full Screen / Esc

Printer-friendly Version

Interactive Discussion



Ice nucleation on volcanic ash

C. R. Hoyle et al.

Title Page

Abstract

Introduction

Conclusions

References

Tables

Figures

◀

▶

◀

▶

Back

Close

Full Screen / Esc

Printer-friendly Version

Interactive Discussion



of a biological ice nucleus and several types of minerals, *J. Geophys. Res.*, 115, D20205, doi:10.1029/2010JD014254, 2010. 17227

Cziczo, D. J., Froyd, K. D., Gallavardin, S. J., Moehler, O., Benz, S., Saathoff, H., and Murphy, D. M.: Deactivation of ice nuclei due to atmospherically relevant surface coatings, *Environ. Res. Lett.*, 4, 044013, doi:10.1088/1748-9326/4/4/044013, 2009. 17227

Dellino, P., Isaia, R., La Volpe, L., and Orsi, G.: Statistical analysis of textural data from complex pyroclastic sequences: implications for fragmentation processes of the Agnano Monte Spina Tephra (4.1 ka), Phlegraean Fields, Southern Italy, *B. Volcanol.*, 63, 443–461, 2001. 17205, 17206

DeMott, P., Cziczo, D., Prenni, A., Murphy, D., Kreidenweis, S., Thomson, D., Borys, R., and Rogers, D.: Measurements of the concentration and composition of nuclei for cirrus formation, *P. Natl. Acad. Sci. USA*, 100, 14655–14660, doi:10.1073/pnas.2532677100, 2003a. 17223

DeMott, P., Sassen, K., Poellot, M., Baumgardner, D., Rogers, D., Brooks, S., Prenni, A., and Kreidenweis, S.: African dust aerosols as atmospheric ice nuclei, *Geophys. Res. Lett.*, 30, 1732, doi:10.1029/2003GL017410, 2003b. 17223

DeMott, P. J., Prenni, A. J., Liu, X., Kreidenweis, S. M., Petters, M. D., Twohy, C. H., Richardson, M. S., Eidhammer, T., and Rogers, D. C.: Predicting global atmospheric ice nuclei distributions and their impacts on climate, *P. Natl. Acad. Sci. USA*, 107, 11217–11222, doi:10.1073/pnas.0910818107, 2010. 17224

Durant, A. J., Shaw, R. A., Rose, W. I., Mi, Y., and Ernst, G. G. J.: Ice nucleation and overseeding of ice in volcanic clouds, *J. Geophys. Res.*, 113, D09206, doi:10.1029/2007JD009064, 2008. 17204, 17210, 17212, 17237

Earle, M. E., Kuhn, T., Khalizov, A. F., and Sloan, J. J.: Volume nucleation rates for homogeneous freezing in supercooled water microdroplets: results from a combined experimental and modelling approach, *Atmos. Chem. Phys.*, 10, 7945–7961, doi:10.5194/acp-10-7945-2010, 2010. 17212, 17215, 17237

Fornea, A. P., Brooks, S. D., Dooley, J. B., and Saha, A.: Heterogeneous freezing of ice on atmospheric aerosols containing ash, soot, and soil, *J. Geophys. Res.*, 114, D13201, doi:10.1029/2009JD011958, 2009. 17204, 17212, 17237

Heiken, G. and Wohletz, K.: *Volcanic Ash*, University of California Press, Berkley, 246 pp., 1985. 17205, 17206

Hussain, K. and Saunders, C.: Ice nucleus measurement with a continuous-flow chamber, Q.

Ice nucleation on volcanic ash

C. R. Hoyle et al.

[Title Page](#)[Abstract](#)[Introduction](#)[Conclusions](#)[References](#)[Tables](#)[Figures](#)[◀](#)[▶](#)[◀](#)[▶](#)[Back](#)[Close](#)[Full Screen / Esc](#)[Printer-friendly Version](#)[Interactive Discussion](#)

- J. Roy. Meteor. Soc., 110, 75–84, 1984. 17203, 17204
- Isono, K., Komabayasi, M., and Ono, A.: Volcanoes as a source of atmospheric ice nuclei, *Nature*, 183, 317–318, 1959. 17203
- Koop, T., Luo, B., Tsias, A., and Peter, T.: Water activity as the determinant for homogeneous ice nucleation in aqueous solutions, *Nature*, 406, 611–614, 2000. 17241
- Langer, G., Garcia, C., Mendonca, B., Pueschel, R., and Fullerton, C.: Hawaiian volcanos – source of ice nuclei, *J. Geophys. Res.*, 79, 873–875, 1974. 17203, 17204
- Lüönd, F., Stetzer, O., Welti, A., and Lohmann, U.: Experimental study on the ice nucleation ability of size-selected kaolinite particles in the immersion mode, *J. Geophys. Res.*, 115, D14201, doi:10.1029/2009JD012959, 2010. 17205, 17208, 17216
- Marculli, C., Gedamke, S., Peter, T., and Zobrist, B.: Efficiency of immersion mode ice nucleation on surrogates of mineral dust, *Atmos. Chem. Phys.*, 7, 5081–5091, doi:10.5194/acp-7-5081-2007, 2007. 17216
- Möhler, O., Field, P. R., Connolly, P., Benz, S., Saathoff, H., Schnaiter, M., Wagner, R., Cotton, R., Krämer, M., Mangold, A., and Heymsfield, A. J.: Efficiency of the deposition mode ice nucleation on mineral dust particles, *Atmos. Chem. Phys.*, 6, 3007–3021, doi:10.5194/acp-6-3007-2006, 2006. 17218
- Nicolet, M., Stetzer, O., Lüönd, F., Möhler, O., and Lohmann, U.: Single ice crystal measurements during nucleation experiments with the depolarization detector IODE, *Atmos. Chem. Phys.*, 10, 313–325, doi:10.5194/acp-10-313-2010, 2010. 17208
- Prenni, A. J., Demott, P. J., Rogers, D. C., Kreidenweis, S. M., Mcfarquhar, G. M., Zhang, G., and Poellot, M. R.: Ice nuclei characteristics from M-PACE and their relation to ice formation in clouds, *Tellus B*, 61, 436–448, doi:10.1111/j.1600-0889.2009.00415.x, 2009. 17203
- Richardson, M. S., DeMott, P. J., Kreidenweis, S. M., Cziczo, D. J., Dunlea, E. J., Jimenez, J. L., Thomson, D. S., Ashbaugh, L. L., Borys, R. D., Westphal, D. L., Casuccio, G. S., and Lersch, T. L.: Measurements of heterogeneous ice nuclei in the Western United States in springtime and their relation to aerosol characteristics, *J. Geophys. Res.*, 112, D02209, doi:10.1029/2006JD007500, 2007. 17224
- Rogers, D., DeMott, P., Kreidenweis, S., and Chen, Y.: Measurements of ice nucleating aerosols during SUCCESS, *Geophys. Res. Lett.*, 25, 1383–1386, 1998. 17223
- Schnell, R. and Delany, A.: Airborne ice nuclei near an active volcano, *Nature*, 264, 535–536, 1976. 17203, 17204
- Schnell, R. C., Pueschel, R., and Wellman, D.: Ice nucleus characteristics of Mount St-Helens

Ice nucleation on volcanic ash

C. R. Hoyle et al.

[Title Page](#)[Abstract](#)[Introduction](#)[Conclusions](#)[References](#)[Tables](#)[Figures](#)[◀](#)[▶](#)[◀](#)[▶](#)[Back](#)[Close](#)[Full Screen / Esc](#)[Printer-friendly Version](#)[Interactive Discussion](#)

effluents, *J. Geophys. Res.*, 87, 1109–1112, 1982. 17204

Schumann, U., Weinzierl, B., Reitebuch, O., Schlager, H., Minikin, A., Forster, C., Baumann, R., Sailer, T., Graf, K., Mannstein, H., Voigt, C., Rahm, S., Simmet, R., Scheibe, M., Lichtenstern, M., Stock, P., Rüba, H., Schäuble, D., Tafferner, A., Rautenhaus, M., Gerz, T., Ziereis, H., Krautstrunk, M., Mallaun, C., Gayet, J.-F., Lieke, K., Kandler, K., Ebert, M., Weinbruch, S., Stohl, A., Gasteiger, J., Groß, S., Freudenthaler, V., Wiegner, M., Ansmann, A., Tesche, M., Olafsson, H., and Sturm, K.: Airborne observations of the Eyjafjalla volcano ash cloud over Europe during air space closure in April and May 2010, *Atmos. Chem. Phys.*, 11, 2245–2279, doi:10.5194/acp-11-2245-2011, 2011. 17210, 17212, 17213, 17214, 17220, 17221, 17222, 17224, 17226, 17233

Shaw, R., Durant, A., and Mi, Y.: Heterogeneous surface crystallization observed in undercooled water, *J. Phys. Chem. B*, 109, 9865–9868, doi:10.1021/jp0506336, 2005. 17203, 17212, 17237

Steinke, I., Möhler, O., Kiselev, A., Niemand, M., Saathoff, H., Schnaiter, M., Skrotzki, J., Hoose, C., and Leisner, T.: Ice nucleation properties of fine ash particles from the Eyjafjallajökull eruption in April 2010, *Atmos. Chem. Phys. Discuss.*, submitted, 2011. 17225

Stetzer, O., Baschek, B., Lueoeond, F., and Lohmann, U.: The Zurich Ice Nucleation Chamber (ZINC) – a new instrument to investigate atmospheric ice formation, *Aerosol Sci. Tech.*, 42, 64–74, doi:10.1080/02786820701787944, 2008. 17208

Sullivan, R. C., Petters, M. D., DeMott, P. J., Kreidenweis, S. M., Wex, H., Niedermeier, D., Hartmann, S., Clauss, T., Stratmann, F., Reitz, P., Schneider, J., and Sierau, B.: Irreversible loss of ice nucleation active sites in mineral dust particles caused by sulphuric acid condensation, *Atmos. Chem. Phys.*, 10, 11471–11487, doi:10.5194/acp-10-11471-2010, 2010. 17227

Welti, A., Lüönd, F., Stetzer, O., and Lohmann, U.: Influence of particle size on the ice nucleating ability of mineral dusts, *Atmos. Chem. Phys.*, 9, 6705–6715, doi:10.5194/acp-9-6705-2009, 2009. 17208, 17217, 17240

Wernli, H. and Davies, H.: A Lagrangian-based analysis of extratropical cyclones 1. The method and some applications, *Q. J. Roy. Meteor. Soc.*, 123, 467–489, 1997. 17219

Wiacek, A., Peter, T., and Lohmann, U.: The potential influence of Asian and African mineral dust on ice, mixed-phase and liquid water clouds, *Atmos. Chem. Phys.*, 10, 8649–8667, doi:10.5194/acp-10-8649-2010, 2010. 17219, 17220, 17241

Wienhold, F.: Measurements and analysis of the Eyjafjallajökull plume optical properties over Switzerland in April 2010, *Atmos. Chem. Phys. Discuss.*, submitted, 2011. 17213, 17233

- Zimanowski, B., Büttner, R., Lorenz, V., and Häfele, H.: Fragmentation of basaltic melt in the course of explosive volcanism, *J. Geophys. Res.*, 102, 803–814 1997. 17205, 17206
- Zobrist, B., Marcolli, C., Koop, T., Luo, B. P., Murphy, D. M., Lohmann, U., Zardini, A. A., Krieger, U. K., Corti, T., Cziczo, D. J., Fueglistaler, S., Hudson, P. K., Thomson, D. S., and Peter, T.: Oxalic acid as a heterogeneous ice nucleus in the upper troposphere and its indirect aerosol effect, *Atmos. Chem. Phys.*, 6, 3115–3129, doi:10.5194/acp-6-3115-2006, 2006. 17207
- Zobrist, B., Koop, T., Luo, B. P., Marcolli, C., and Peter, T.: Heterogeneous ice nucleation rate coefficient of water droplets coated by a nonadecanol monolayer, *J. Phys. Chem. C*, 111, 2149–2155, doi:10.1021/jp066080w, 2007. 17212, 17216, 17237
- Zobrist, B., Marcolli, C., Pedernera, D. A., and Koop, T.: Do atmospheric aerosols form glasses?, *Atmos. Chem. Phys.*, 8, 5221–5244, doi:10.5194/acp-8-5221-2008, 2008. 17207

Ice nucleation on volcanic ash

C. R. Hoyle et al.

[Title Page](#)[Abstract](#)[Introduction](#)[Conclusions](#)[References](#)[Tables](#)[Figures](#)[I◀](#)[▶I](#)[◀](#)[▶](#)[Back](#)[Close](#)[Full Screen / Esc](#)[Printer-friendly Version](#)[Interactive Discussion](#)

Ice nucleation on volcanic ash

C. R. Hoyle et al.

Table 1. Several suspensions of the ash were created, and the freezing temperature of different samples of these suspensions were investigated. The names by which the different suspensions are referred to in the text are listed below, along with the details of the suspension: weight percent of ash in the suspension and the approximate largest diameter of ash particles remaining in the suspension after settling. If no settling was carried out, all diameters from the ash sample are assumed to be represented. For the settled samples, the weight percents are the estimated weight percent after settling, with the weight percent of ash in the sample before settling given in brackets.

Number	Name	Wt %	Diameter
1	Pure water	–	–
2	Ey1 5wt%	5	all
3	Ey0 5 wt%	5	all
4	Ey0 0.05 wt% < 1 μm	ca. 0.05 (5)	ca. < 1 μm
5	Ey0 2 wt% < 20 μm	ca. 2 (5)	ca. < 20 μm
6	Ey0 0.5 wt%	0.5	all
7	Ey0 0.2 wt% < 20 μm	ca. 0.2 (0.5)	ca. < 20 μm
8	ATD	5	all

Title Page

Abstract

Introduction

Conclusions

References

Tables

Figures

I◀

▶I

◀

▶

Back

Close

Full Screen / Esc

Printer-friendly Version

Interactive Discussion



Ice nucleation on volcanic ash

C. R. Hoyle et al.

Title Page

Abstract

Introduction

Conclusions

References

Tables

Figures

◀

▶

◀

▶

Back

Close

Full Screen / Esc

Printer-friendly Version

Interactive Discussion



Table 2. The nucleation temperature range of the best IN in the Ey0 2 wt% < 20 μm bulk freezing experiments, and the corresponding estimated number density per air volume assuming a single best IN, when the mass of ash in the sample (and therefore the number of ash particles) is scaled to ash mass density observed in the atmosphere.

Location	wt%	Ash mass in DSC sample	Observed mass density	Freezing temperature range	IN number density (cm^{-3})
¹ Skagerrak	2.0	0.049 mg	$160 \mu\text{g m}^{-3}$	251.4–258.0 K	3.3×10^{-6}
¹ Baltic Sea	2.0	0.049 mg	$7 \mu\text{g m}^{-3}$	251.4–258.0 K	1.4×10^{-7}
² Zurich	2.0	0.049 mg	$600 \mu\text{g m}^{-3}$	251.4–258.0 K	1.2×10^{-5}
³ Biel	2.0	0.049 mg	$320 \mu\text{g m}^{-3}$	251.4–258.0 K	6.5×10^{-6}

¹Schumann et al. (2011)

²Wienhold (2011)

³Bukowiecki et al. (2011)

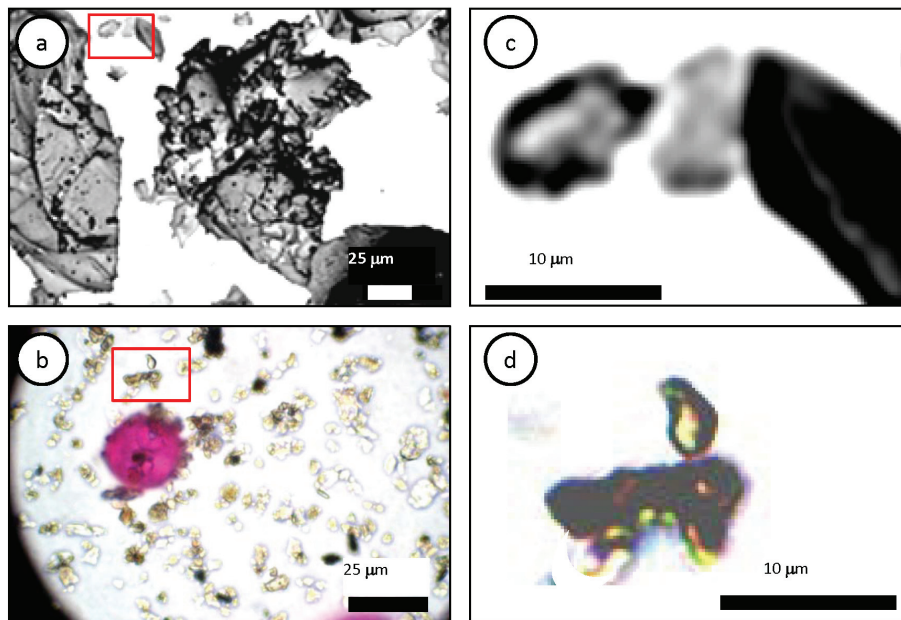


Fig. 1. (a) Scanning electron microscope pictures of the Ey1 sample showing ash particles of 100–200 μm and smaller, collected approximately 8 km south of the active vent on 11 May 2010. (b) Photo of particles in pollen sampler (hirst-type) in Zurich, Switzerland, about 2500 km from the volcano, on 19 April. Sampling efficiency in the pollen sampler decreases for particles $< 5 \mu\text{m}$, vanishing below $1 \mu\text{m}$. The large pink particle is a pollen particle, the small irregular particles are mostly volcanic ash particles (photo: Barbara Pietragalla, MeteoSchweiz). Particles in the red boxes are shown on the right (c and d) at larger magnification.

Ice nucleation on volcanic ash

C. R. Hoyle et al.

Title Page	
Abstract	Introduction
Conclusions	References
Tables	Figures
◀	▶
◀	▶
Back	Close
Full Screen / Esc	
Printer-friendly Version	
Interactive Discussion	



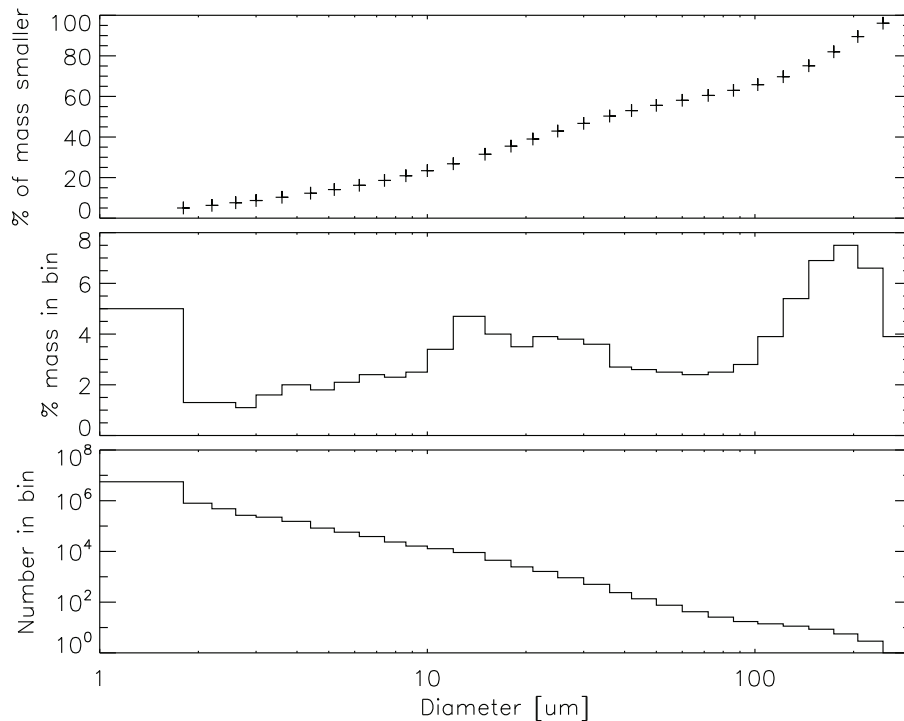


Fig. 2. Size distribution of the Ey0 ash sample collected on 15 April 2010. Top panel: percentage of sample mass made up of particles smaller than the diameter value on the x -axis. Centre panel: percentage of sample mass made up by particles in a certain size bin (with bin sizes indicated by the width of the bars; the lowest measured diameter bin, $1.8 \mu\text{m}$ also contains the mass of all smaller particles). Bottom panel: number of particles in each size bin (with particles smaller than $1.8 \mu\text{m}$ diameter counted in the $1.8 \mu\text{m}$ bin). Normalisation: the number of particles is set to unity for the largest size, the number for smaller sizes is then relative to the largest. On the 15 April, there were no particles larger than $300 \mu\text{m}$.

Ice nucleation on volcanic ash

C. R. Hoyle et al.

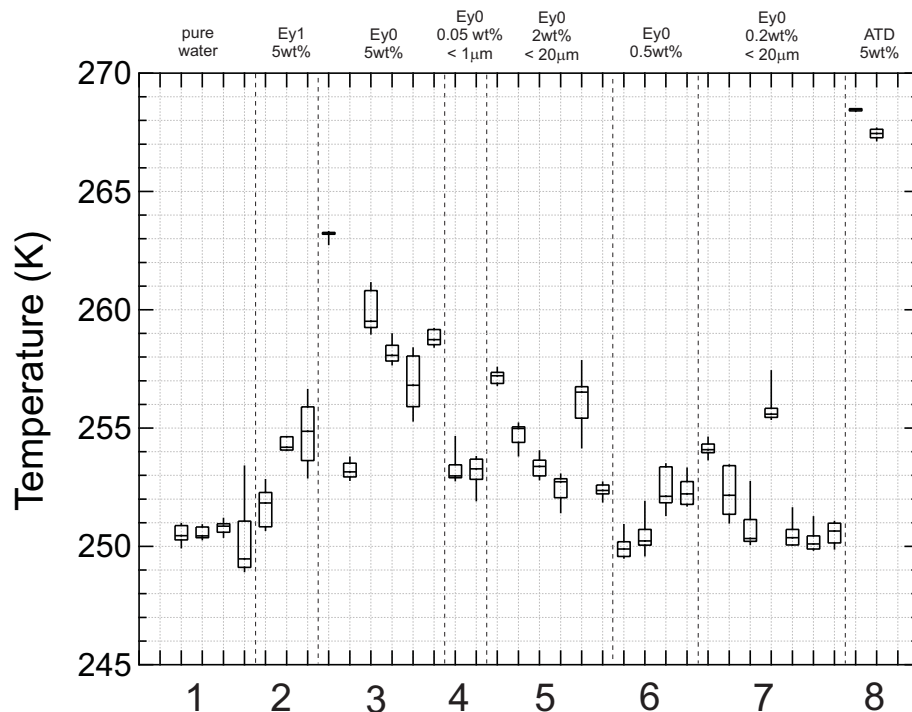


Fig. 3. Bulk freezing temperatures for different suspensions containing ash, and for comparison Arizona test dust. Sets of experimental runs for samples from each suspension are separated by vertical lines. Suspensions: 1 – pure water; 2 – Ey1, 5 wt%; 3 – Ey0, 5 wt%; 4 – Ey0, 0.05 wt%, particles larger than 1 μm settled out; 5 – Ey0, 2 wt%, particles larger than 20 μm settled out; 6 – Ey0, 0.5 wt%; 7 – Ey0, 0.2 wt%, particles larger than 20 μm settled out; 8 – Arizona test dust, 5 wt%. For each experimental run (8–10 cooling and warming cycles performed with one sample), boxes show mean values and upper and lower quartiles, whiskers show extreme values.

[Title Page](#)[Abstract](#)[Introduction](#)[Conclusions](#)[References](#)[Tables](#)[Figures](#)[◀](#)[▶](#)[◀](#)[▶](#)[Back](#)[Close](#)[Full Screen / Esc](#)[Printer-friendly Version](#)[Interactive Discussion](#)

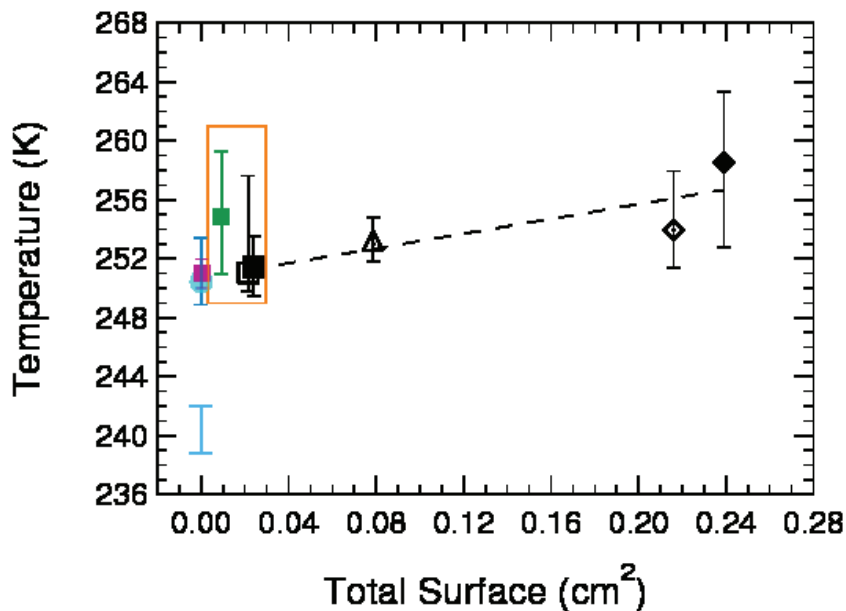


Fig. 4. Bulk freezing temperatures as a function of the surface area of Ey0 ash in the sample. The dashed line shows a linear fit of T_f to the surface area of ash in sample. Pure water is not included in the fit. The black symbols represent the different ash samples: Open square – Ey0 0.2 wt% < 20 μm ; Filled square – Ey0 0.5 wt%; Open triangle – Ey0 0.05 wt% < 1 μm ; Open diamond – Ey0 2 wt% < 20 μm ; Filled diamond – Ey0 5 wt%. The light blue circle shows the freezing temperature of pure water, bulk sample; Light blue error bar 239–242 K – homogeneous freezing temperature of bulk water sample, calculated using the nucleation rates of Zorbrist et al. (2007) and Earle et al. (2010), respectively; The other coloured symbols represent values from the literature: Purple square – Shaw et al. (2005); Green square – Fornea et al. (2009); Area marked by orange rectangle – Durant et al. (2008); The size of the error bars is given by the range of the freezing temperatures for a particular surface area of ash, and not by the precision of the measurements.

Ice nucleation on volcanic ash

C. R. Hoyle et al.

Title Page	
Abstract	Introduction
Conclusions	References
Tables	Figures
◀	▶
◀	▶
Back	Close
Full Screen / Esc	
Printer-friendly Version	
Interactive Discussion	



Ice nucleation on volcanic ash

C. R. Hoyle et al.

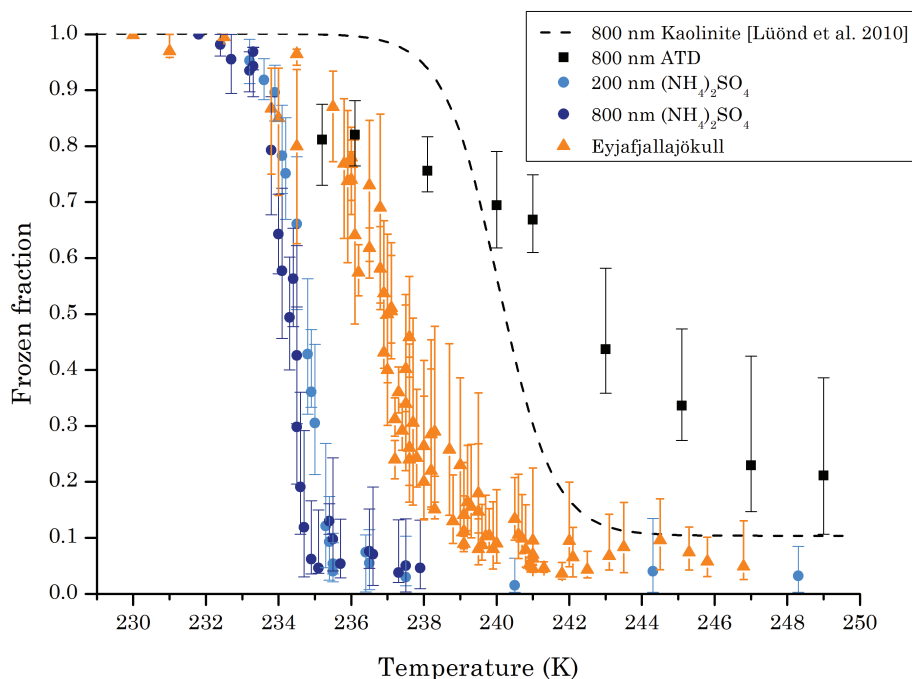


Fig. 5. Immersion freezing of droplets as a function of temperature, from IMCA/ZINC measurements. Orange triangles: fraction of ash particles which nucleated ice, as a function of temperature. Blue points: frozen fraction for homogeneous nucleation of cloud droplets produced by CCN activation of ammonium sulphate particles with dry diameters of 200 nm (light blue) and 800 nm (dark blue). For comparison, data for ATD and 800 nm kaolinite particles are also shown.

[Title Page](#)[Abstract](#)[Introduction](#)[Conclusions](#)[References](#)[Tables](#)[Figures](#)[◀](#)[▶](#)[◀](#)[▶](#)[Back](#)[Close](#)[Full Screen / Esc](#)[Printer-friendly Version](#)[Interactive Discussion](#)

Ice nucleation on volcanic ash

C. R. Hoyle et al.

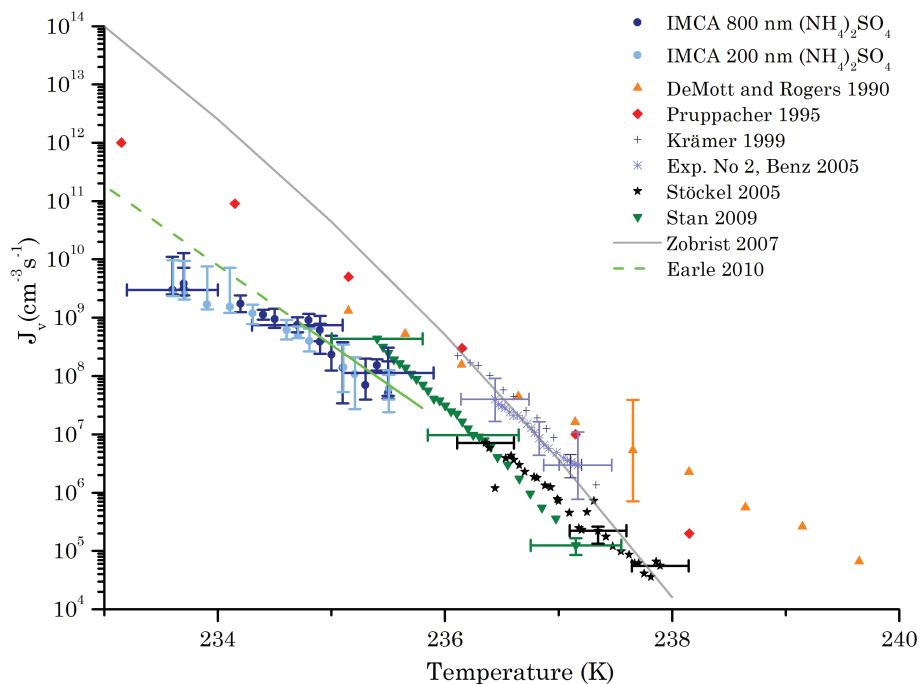


Fig. 6. The homogeneous nucleation rate of water in the temperature range 233 K to 238 K. The two sets of IMCA/ZINC measurements were made by CCN activation of 800 nm and 200 nm $(\text{NH}_4)_2\text{SO}_4$ particles, leading to water droplets with estimated diameters of 6 μm .

Title Page

Abstract

Introduction

Conclusions

References

Tables

Figures

◀

▶

◀

▶

Back

Close

Full Screen / Esc

Printer-friendly Version

Interactive Discussion



Ice nucleation on volcanic ash

C. R. Hoyle et al.

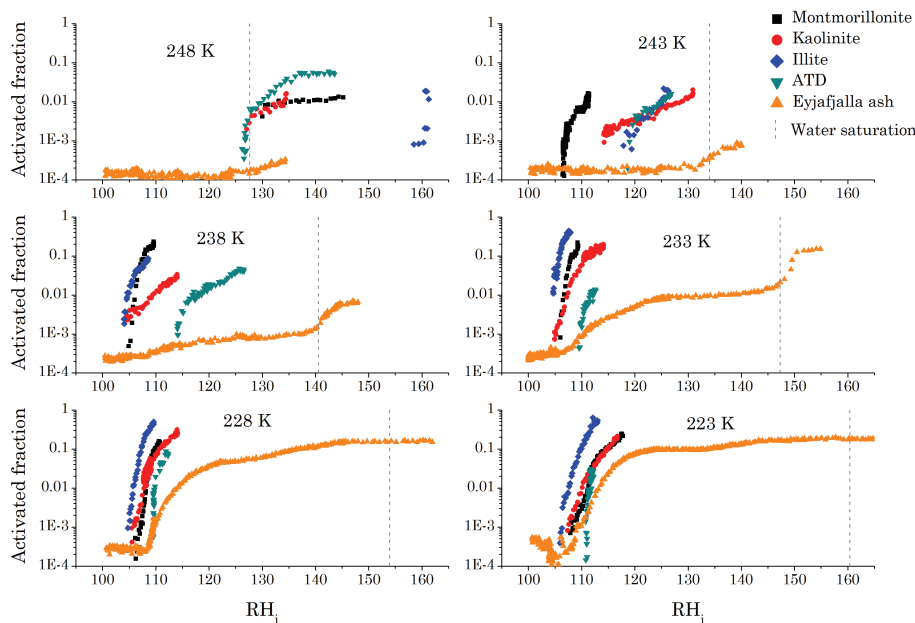


Fig. 7. The fraction of activated (ice coated) ash particles (from the Ey0 ash sample) for deposition mode experiments, as a function of the relative humidity with respect to ice, for different temperatures (orange triangles). Also plotted for comparison: deposition freezing measurements for 800 nm size-selected mineral dust particles (Welti et al., 2009). The vertical grey line represents water saturation.

[Title Page](#)[Abstract](#)[Introduction](#)[Conclusions](#)[References](#)[Tables](#)[Figures](#)[◀](#)[▶](#)[◀](#)[▶](#)[Back](#)[Close](#)[Full Screen / Esc](#)[Printer-friendly Version](#)[Interactive Discussion](#)

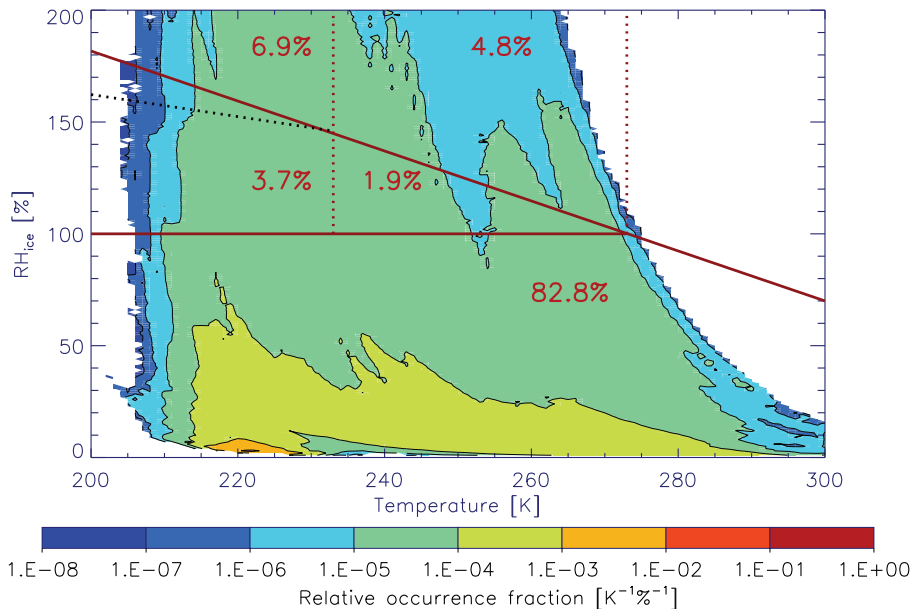


Fig. 8. The fraction of all 90 Mio trajectory points with a particular RH_{ice} and temperature (normalised) from trajectories leaving the Eyjafjallajökull region between 15 and 30 April 2010. RH_{ice} at each point is calculated using the water vapour mixing ratio from the initial trajectory point (see text). Red diagonal line: saturation with respect to liquid water ($RH_{liq} = 100\%$). Red horizontal line: $RH_{ice} = 100\%$. Black dashed line: homogeneous ice nucleation (Koop et al., 2000). Red dashed lines (at $T = 233\text{ K}$ and 273 K): division lines between warm clouds ($T > 273\text{ K}$), mixed-phase clouds ($233\text{ K} < T < 273\text{ K}$), and cold cirrus clouds ($T < 233\text{ K}$). The percentage of the trajectory points in each segment surrounded by red lines is indicated by the red numerals. Note: points with $RH > RH_{liq}$ are indicative for condensation of liquid water (i.e. the trajectory will continue along the red diagonal). Compare Wiacek et al. (2010).

Ice nucleation on volcanic ash

C. R. Hoyle et al.

Title Page

Abstract Introduction

Conclusions References

Tables Figures

◀ ▶

◀ ▶

Back Close

Full Screen / Esc

Printer-friendly Version

Interactive Discussion



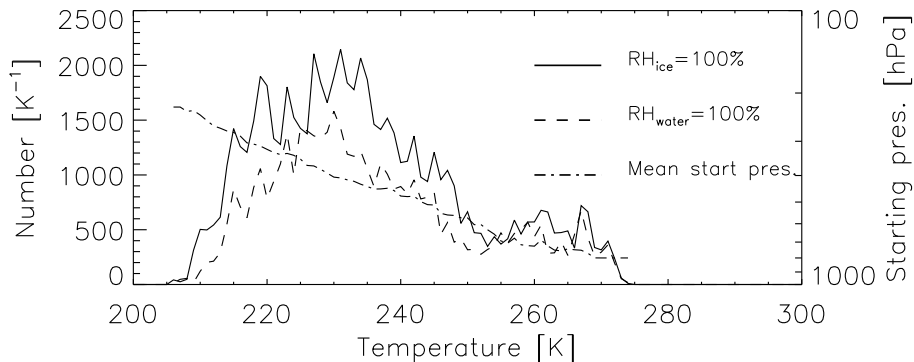


Fig. 9. The number of trajectories reaching ice or water saturation at a particular temperature (dashed and solid lines, respectively), along with the mean starting pressure of the trajectories which reached ice saturation at each temperature (dot dashed line).

Ice nucleation on volcanic ash

C. R. Hoyle et al.

Title Page	
Abstract	Introduction
Conclusions	References
Tables	Figures
◀	▶
◀	▶
Back	Close
Full Screen / Esc	
Printer-friendly Version	
Interactive Discussion	



Ice nucleation on volcanic ash

C. R. Hoyle et al.

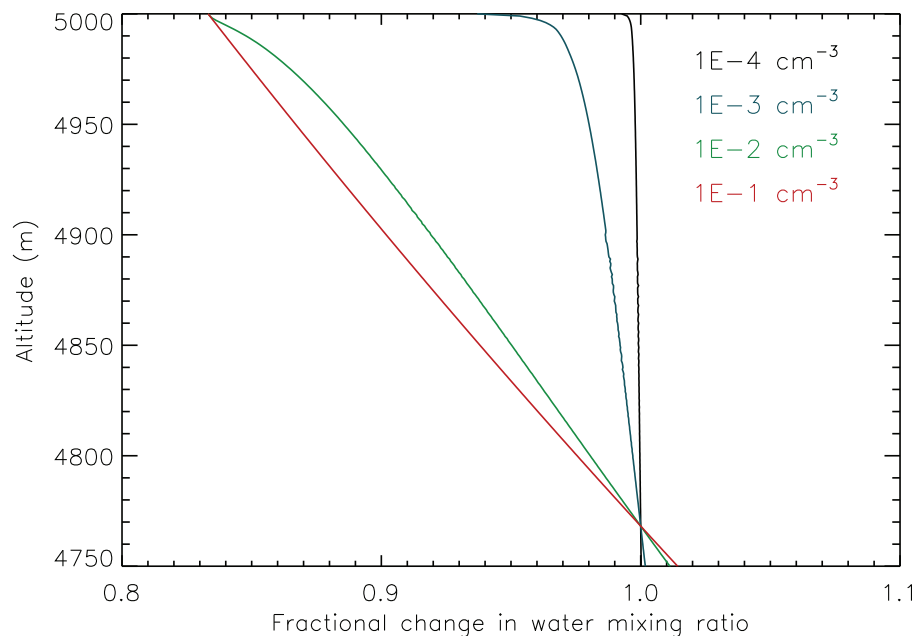


Fig. 10. The fractional dehydration caused by the sedimentation of a 2 km thick layer of ice coated ash, with number densities of between $1 \times 10^{-4} \text{ cm}^{-3}$ and $1 \times 10^{-1} \text{ cm}^{-3}$. Note that number densities at or above $1 \times 10^{-1} \text{ cm}^{-3}$ lead to total dehydration of the column. Below 4770 m, the column becomes subsaturated, and the sedimenting ice particles begin to evaporate, causing re-hydration.

[Title Page](#)[Abstract](#)[Introduction](#)[Conclusions](#)[References](#)[Tables](#)[Figures](#)[◀](#)[▶](#)[◀](#)[▶](#)[Back](#)[Close](#)[Full Screen / Esc](#)[Printer-friendly Version](#)[Interactive Discussion](#)