

**Monsoon and  
aerosols in India –  
Part 1**

A.-P. Hyvärinen et al.

# Effect of the summer monsoon on aerosols at two measurement stations in Northern India – Part 1: PM and BC concentrations

A.-P. Hyvärinen<sup>1</sup>, T. Raatikainen<sup>1,\*</sup>, D. Brus<sup>1,2</sup>, M. Komppula<sup>3</sup>, T. S. Panwar<sup>4</sup>, R. K. Hooda<sup>4</sup>, V. P. Sharma<sup>4</sup>, and H. Lihavainen<sup>1</sup>

<sup>1</sup>Finnish Meteorological Institute, Erik Palménin aukio 1, P. O. Box 503, 00101, Helsinki, Finland

<sup>2</sup>Laboratory of Aerosol Chemistry and Physics, Institute of Chemical Process Fundamentals Academy of Sciences of the Czech Republic, Rozvojová 135, 165 02 Prague 6, Czech Republic

<sup>3</sup>Finnish Meteorological Institute, Yliopistonranta 1F, P.O. Box 1627, 70211 Kuopio, Finland

<sup>4</sup>The Energy and Resources Institute (TERI), Darbari Seth Block, IHC Complex, Lodhi Road, New Delhi 110 003, India

\*now at: School of Earth and Atmospheric Sciences, Georgia Institute of Technology, 311 Ferst Drive, Atlanta, GA 30332-0340, USA

Title Page

Abstract

Introduction

Conclusions

References

Tables

Figures

⏪

⏩

◀

▶

Back

Close

Full Screen / Esc

Printer-friendly Version

Interactive Discussion



Received: 21 December 2010 – Accepted: 27 December 2010 – Published: 19 January 2011

Correspondence to: A.-P. Hyvärinen (antti.hyvarinen@fmi.fi)

Published by Copernicus Publications on behalf of the European Geosciences Union.

ACPD

11, 1715–1748, 2011

---

**Monsoon and  
aerosols in India –  
Part 1**

A.-P. Hyvärinen et al.

---

Title Page

Abstract

Introduction

Conclusions

References

Tables

Figures

⏪

⏩

◀

▶

Back

Close

Full Screen / Esc

Printer-friendly Version

Interactive Discussion



## Abstract

Particulate matter (PM) and black carbon (BC) concentrations were measured at two locations in Northern India during 2006–2010. The first measurement station is a background site in Mukteshwar, about 350 km northeast of New Delhi, in the foothills of the Indian Himalayas. The second measurement site was located in Gual Pahari, about 25 km south of New Delhi. Here we focused on resolving the effects of the Indian summer monsoon on the particulate matter and black carbon concentrations at the two stations. The average monsoon time concentrations were decreased by 55–70% compared to the pre-monsoon average concentrations at both stations, having a linear relationship with the total local rainfall during the monsoon season. In Mukteshwar during the monsoon, the 24 h  $PM_{2.5}$  concentrations were always below the Indian National Air Quality Standard of  $60 \mu\text{gm}^{-3}$ . In Gual Pahari, 13% of days exceeded this level during the monsoon season. However, the 24 h guideline of  $25 \mu\text{gm}^{-3}$  given by the World Health Organization was more difficult to meet. In addition to loss processes, aerosol concentrations during the early monsoon were found to be affected by primary emissions, most likely dust event from the Thar Desert. This resulted in elevated fractions of the coarse mode,  $PM_{2.5-10}$  at both stations. In Mukteshwar, additional dust contribution came from the arid regions on the southern slopes of Himalayas. We also determined the characteristic transition times between the pre-monsoon, monsoon and post-monsoon. The onset and withdrawal transitions occurred faster in Mukteshwar than in Gual Pahari, both being typically less than 10 days. Transition periods in Gual Pahari took between 17 and 31 days. The shorter transition times in Mukteshwar were probably related to the more intense rains due to the mountain location.

ACPD

11, 1715–1748, 2011

## Monsoon and aerosols in India – Part 1

A.-P. Hyvärinen et al.

Title Page

Abstract

Introduction

Conclusions

References

Tables

Figures

◀

▶

◀

▶

Back

Close

Full Screen / Esc

Printer-friendly Version

Interactive Discussion



## 1 Introduction

Over 60% of world's population is dependent on the water brought by the Asian summer monsoon. In addition to being a water supply and providing agricultural irrigation, the monsoon brings a relief to the severe pollution built up during the winter and spring in the area. The largest and most persistent of these pollution hazes, called the "brown cloud", covers an area of about 10 million km<sup>2</sup> over Southern Asia (e.g., Lelieveld et al., 2001; Nakajima et al., 2007; Ramanathan et al., 2007). This particulate air pollution is assumed to originate from fossil fuel and biomass burning. Especially in mega-cities such as New Delhi, air pollution is a major health issue, causing as much as 3500 excess cases in cardiovascular mortality (Gurjar et al., 2010) per year. Even in the remote Himalayan areas, spring time particulate matter concentrations exceed the standard values set by the WHO (Panwar et al., 2011). During monsoon, the pollutants are brought down in different wet deposition processes. These reasons provide a comprehensive motivation to quantify the effect of the monsoon on aerosols in the area. In addition, it's well known that aerosols can modulate the monsoon and thus the whole water cycle (Lau and Kim, 2006; Bollasina et al., 2008; Meehl et al., 2008).

The Finnish Meteorological Institute (FMI) in co-operation with the Energy and Resources Institute of India (TERI) have establish two well-equipped aerosol measurement stations in Northern India. One station was located at a Gual Pahari from December 2007 to January 2010. The site represented urban background in the Indo-Gangetic plains close to New Delhi (Hyvärinen et al., 2010a). Mukteshwar, on the other hand, is a relatively clean site at the foothills of Himalayas about 270 km NE from Gual Pahari and about 2 km above the plains (Hyvärinen et al., 2009; Komppula et al., 2009). The Mukteshwar station has been operational since September 2005.

In this paper, we focus to investigate the particulate matter and black carbon, and their development during the summer monsoon seasons at the two stations. We quantify the effect that the monsoon has on the aerosol concentrations and compare the

### Monsoon and aerosols in India – Part 1

A.-P. Hyvärinen et al.

Title Page

Abstract

Introduction

Conclusions

References

Tables

Figures

◀

▶

◀

▶

Back

Close

Full Screen / Esc

Printer-friendly Version

Interactive Discussion



differences between different years at the two locations. Furthermore, we attempt to determine the characteristic times of the onset and withdrawal of monsoon. From the health perspective, it's interesting to know how quickly the concentrations change between the pre-monsoon, monsoon, and post-monsoon seasons. In the companion paper of this manuscript, we focus on the effect of monsoon on aerosol physical and optical properties (Hyvärinen et al., 2011).

## 2 Measurement sites and methods

### 2.1 Measurement locations

The first measurement station was a background site in Mukteshwar (29°26' N, 79°37' E, Fig. 1), about 350 km northeast of New Delhi in India. The site was located at 2180 m a.s.l. in a rural region at the Himalaya mountains. The station was surrounded by an agricultural test field. No major local pollution sources were known to affect the site. The nearest towns, Nainital and Almora, are located 25 km to the west and north of the site, respectively (see Hyvärinen et al., 2009 for a more detailed site description). Since the location was a remote place with minimal local emissions, we believe that the site represents, to the extent possible, a regional background in India. The second measurement site (Fig. 1) was located in Gual Pahari (28.43° N, 77.15° E, 243 a.s.l.), Gurgaon, about 25 km south of New Delhi (see Hyvärinen et al., 2009 for a more detailed site description). The surroundings represented a semi-urban environment.

### 2.2 Instruments

In Mukteshwar, the PM<sub>10</sub> and PM<sub>2.5</sub> measurements were carried out using real-time beta attenuation particulate monitors (FH 62 I-R) manufactured by Thermo Scientific. The black carbon concentrations were measured with a Magee AE 31 Aethalometer. In addition, other measurements included the particle number size distribution

## Monsoon and aerosols in India – Part 1

A.-P. Hyvärinen et al.

Title Page

Abstract

Introduction

Conclusions

References

Tables

Figures

◀

▶

◀

▶

Back

Close

Full Screen / Esc

Printer-friendly Version

Interactive Discussion



from 10 nm to 800 nm, aerosol scattering coefficient, and meteorological parameters including temperature, pressure, relative humidity and wind speed/direction. The measurements and instruments at the site are presented in more detail by Hyvärinen et al. (2009) and Komppula et al. (2009). The black carbon concentrations were sampled from a PM<sub>2.5</sub> inlet.

In Gual Pahari, PM<sub>2.5</sub> and PM<sub>10</sub> were measured with Thermo Scientific SHARP Monitors model 5030, which utilizes a hybrid method of beta attenuation with light scattering. Aerosol black carbon was measured with a Thermo Scientific Multi-Angle Absorption Photometer, MAAP. In addition, total particle number concentration, particle number size distribution over the diameter range 4 nm–10 µm, and aerosol scattering coefficient were measured. Weather parameters included temperature, pressure, relative humidity, wind speed/direction, and rain intensity/accumulation. In addition to in situ measurements, the aerosol columnar properties during monsoon season were measured with a Raman Lidar in 2008 and with a sunphotometer in 2009. A more detailed presentation can be found in Hyvärinen et al. (2010) and Komppula et al. (2010).

### 2.3 Data processing

The measured data was saved as five minute averages. The five minute data was checked, with outliers and obvious instrument malfunctions periods removed. The data was then averaged to one hour with the condition that each hour had more than 25 min of data. All longer time averages were calculated from the hourly data, which was also converted to STP-conditions. It has to be noted that regulatory guidelines set by WHO are from ambient measurements, not in STP conditions. We will mention specifically whether our concentrations are be presented in ambient or STP conditions. One month averages were only calculated if the data covered more than 30% of the time. For seasonal analyses, the year was divided into four seasons: winter (December–February), pre-monsoon (March-onset of monsoon), monsoon season and post-monsoon (withdrawal of monsoon–Nov). When seasonal averages were calculated, the determined onset and withdrawal dates defined the monsoon season for each year separately.

## Monsoon and aerosols in India – Part 1

A.-P. Hyvärinen et al.

Title Page

Abstract

Introduction

Conclusions

References

Tables

Figures

◀

▶

◀

▶

Back

Close

Full Screen / Esc

Printer-friendly Version

Interactive Discussion



While these dates were typically available for New Delhi, the dates for Mukteshwar had to be estimated (see Raatikainen et al., 2011), and may contain some inaccuracy. Again a 30% data coverage level was demanded.

Backward trajectories were calculated for every three hours with the FLEXTRA model (Stohl et al., 1995) for the 950-hPa pressure level for Gual Pahari and 750-hPa pressure level for Mukteshwar. For further trajectory analysis, the surroundings were split into 30° sectors to enable a more detailed investigation of the source areas of particulate pollution. For each trajectory, a number of quantities were calculated, including the sectors in which the air was 24, 72 and 120 h prior to its arrival at the measurement sites, the fraction of time the air had spent in each sector, average heights above sea level and above ground level. Taken together, these quantities provide a good basis for distinguishing between different air masses and their influences on measured aerosol properties.

## 3 Results

### 3.1 Monsoon characteristics

The inter-annual characteristics of the monsoon season in Mukteshwar and Gual Pahari are presented in Table 1 and Fig. 2. There were no rainfall measurements in Mukteshwar, so district-wise monthly rainfall data from the India Meteorological Department (IMD) web pages (<http://www.imd.gov.in>) was used. Rainfall in Mukteshwar was calculated as an average of those at Nainital and Almora, which are the two closest measurement stations. Similarly, Gual Pahari rainfall was an average of those at Gurgaon, Faridabad and New Delhi stations. During the four measurement years there were contrasting monsoon seasons; with both excessive rain and draught. Not surprisingly, heavier rainfall was observed in Mukteshwar, as air masses flowing uphill are more likely to form rain. In our measurement locations, year 2008 exhibited most rainfall, with a total of 1710 mm in the Mukteshwar area and 570 mm in Gual Pahari.

## Monsoon and aerosols in India – Part 1

A.-P. Hyvärinen et al.

Title Page

Abstract

Introduction

Conclusions

References

Tables

Figures

◀

▶

◀

▶

Back

Close

Full Screen / Esc

Printer-friendly Version

Interactive Discussion



Year 2008 also exhibited an early monsoon onset date of 16.6., which is one of the earliest onset dates recorded in the area. The weakest monsoon occurred in 2006, with 760 mm total rain in Mukteshwar. This was similar to 2009, when 780 mm rained in Mukteshwar and 420 mm in Gual Pahari. Interestingly, in Mukteshwar during 2009 a considerable amount of rainfall was received in October, after the monsoon had officially withdrawn.

General weather parameters and backward trajectories have been presented in detail in our previous papers (Hyvärinen et al., 2009, 2010a; Komppula et al., 2009; Raatikainen et al., 2011); and only a short summary concerning the monsoon season is presented here. The monsoon seasons at both locations were characterized by low pressures: 781 hPa and 973 hPa in Mukteshwar and Gual Pahari, respectively; and high RH's: 88%, and 74%. The average temperature in Mukteshwar was 17.7 °C and in Gual Pahari 28.0 °C. The diurnal variation of these parameters was weaker than during other times of the year. The trajectories had a distinct pattern during the monsoon season. In Mukteshwar, the most common sector was from 90 to 180°, i.e. from the Bay of Bengal, with about 47% contribution. The sector from 210 to 270° (Arabian Sea) contributed an additional 22%. In Gual Pahari, the prominent sectors were nearly similarly from 210–270° and 90–120°, but here a 43% contribution was obtained from the Arabian Sea and 23% from the Bay of Bengal. Inter-annual variations of the trajectories were also studied, but no significant differences were found. Outside the monsoon season, westerly air masses dominated.

In previous studies (Raatikainen et al., 2011), the boundary layer height was indicated to be the main reason for the different annual and diurnal variation of aerosol properties at these two stations. The explanation was based on mixing of the cleaner air masses at the altitude of Mukteshwar with polluted air masses from the plains below. This occurred, when the boundary layer height was elevated above the Mukteshwar altitude (2180 m a.s.l.). During the monsoon season, the average maximum boundary layer heights did not exceed 1500 m (Fig. 3), so Mukteshwar resided mostly in the free troposphere.

**Monsoon and aerosols in India – Part 1**

A.-P. Hyvärinen et al.

Title Page

Abstract

Introduction

Conclusions

References

Tables

Figures

◀

▶

◀

▶

Back

Close

Full Screen / Esc

Printer-friendly Version

Interactive Discussion





## 3.2 General features

The summer monsoon provides the main removal mechanism for atmospheric pollutants in the Indian subcontinent by different wet deposition processes. The annual variation of  $PM_{2.5}$  for both stations in 2008 can be seen in Fig. 4. The effect of the summer monsoon is very clear in this figure. When the rain accumulation increased in June–September, the  $PM_{2.5}$  concentration decreased drastically. It's important to notice from the health perspective that the monsoon season was one of the only times of the year when  $PM_{2.5}$  were mostly below the national 24 h ambient air quality standard level of  $60 \mu\text{gm}^{-3}$  (Central Pollution Control Board of India, 2009) at both measurement locations. However, the air quality guidelines given by the WHO ( $PM_{2.5} < 25 \mu\text{gm}^{-3}$ ) were still often exceeded.

The average monsoon aerosol concentrations were decreased by about 50–70% compared to the pre-monsoon average concentrations at both stations (Table 2, Fig. 5), having a linear relationship with the total rainfall during the monsoon season. The most effective decrease of the aerosol concentrations were observed during 2008 in Mukteshwar. During 2008 also the rain amounts were the highest of the study period. The relative decrease seems independent of the measurement location, and can be estimated from the rain accumulation alone by an accuracy of  $\pm 5\%$ . The measured aerosol property affected the concentration decrease somewhat, showing a more effective removal for black carbon and a less effective removal for  $PM_{10}$ . However, data from the rainiest years was not available for  $PM_{10}$ , which explains the low  $R^2$  value shown in Fig. 5.

The amount of rainfall dictated the general magnitude of the aerosol decrease, but in addition to the loss processes, the concentrations were of course dependent on the sources. An example of this was seen in Gual Pahari. While both 2008 and 2009 showed very similar decreases in the PM concentrations due to similar rainfalls, the decrease was slightly stronger during 2009, even though this was a weaker monsoon year. This was due to sources. In 2008 there were more episodic high concentrations

### Monsoon and aerosols in India – Part 1

A.-P. Hyvärinen et al.

Title Page

Abstract

Introduction

Conclusions

References

Tables

Figures

⏪

⏩

◀

▶

Back

Close

Full Screen / Esc

Printer-friendly Version

Interactive Discussion



observed during the monsoon, and these increased the average concentrations. It has to be noted however that the deviations in the source strength were only able to affect the fine structure of the seasonal concentrations, and the magnitude was still governed by the rainfall observed during the monsoon. Pre-monsoon and early monsoon is the dust season in India (see Gautam et al., 2009b and references within). The prospect of the high concentrations during monsoon being mineral dust is investigated in Sect. 3.5.

### 3.3 Aerosols at monsoon onset and withdrawal

The transient periods between pre-monsoon/monsoon and monsoon/post-monsoon seasons provide a possibility to look at the characteristic times of aerosol removal and build-up. This information is interesting from the health perspective, to have an idea how fast the concentrations will decrease below the air quality standard levels at the onset, and increase again to harmful levels at the withdrawal. Another motivation is to understand the main mechanisms driving the concentration changes.

We determined these characteristic times by examining all the mass concentration data ( $PM_{10}$ ,  $PM_{2.5}$ , BC). Data was first normalized to monsoon time averages for each year, setting the annual monsoon average as unity. Normalized data of  $PM_{2.5}$ ,  $PM_{10}$  and BC was then averaged as a single proxy describing the concentrations as 24 h averages. The transient time was determined as the time it took for the proxy to decrease from the pre-monsoon average to the monsoon average, or increase from the monsoon average to the post-monsoon average. To make sure that these average values reflected the true end and beginning of the seasons, a further criterion was that the 24 h average had to be within the 25–75 percentile values of the prevailing season for at least 5 consecutive days before and after the transient period. As these choices are somewhat subjective, the presented characteristic transition times are only qualitative.

The onset transition in Gual Pahari took about 20 to 30 days, and began typically during the late pre-monsoon season (Table 3, Fig. 6). From the rain accumulation data we were able to conclude that the beginning of the transient period in 2008 coincided with the first heavy rain showers, and there was over 130 mm of rainfall in the area

## Monsoon and aerosols in India – Part 1

A.-P. Hyvärinen et al.

Title Page

Abstract

Introduction

Conclusions

References

Tables

Figures

◀

▶

◀

▶

Back

Close

Full Screen / Esc

Printer-friendly Version

Interactive Discussion



5 during the transition period. This resulted in an early beginning of the transition which was nearly 30 days long. In 2009, basically no local rain (10 mm) was observed in Gual Pahari during the transition period. However, the transient period still took over 20 days, which suggest that in general the local rains – which lowered the concentrations temporarily – were not the main driving force behind the initial concentration change in Gual Pahari. The transition onset period was much shorter in Mukteshwar, lasting from about 2 to 10 days. In Mukteshwar, the rain amounts were high already in June, which suggests that the aerosol was brought down by efficient wet deposition. Unfortunately no local rain data was available from Mukteshwar, so we cannot  
10 conclude if this was the reason for the shorter transition period. In addition to the wet deposition processes, it's likely that the transport patterns of aerosols had a role in the concentration decrease. It's worth to point out that the onset transitions ended always close to the official monsoon onset date at both locations.

15 The withdrawal of monsoon and consequent increase of the aerosol concentrations also differed clearly at the two stations. In Mukteshwar, the transition period varied from about 3 to 10 days, while in Gual Pahari, the transient period took up to 31 days (Table 3, Fig. 6). Again this illustrates that the build-up process was different at the two locations. In Mukteshwar, the post-monsoon concentrations and size distributions (see Hyvärinen et al., 2011) were close to the monsoon period averages. Thus, the  
20 post-monsoon average concentrations were achieved quickly. In fact, in 2009 the post-monsoon concentrations were even lower than the monsoon concentrations, partly due to additional rains during October. In Gual Pahari, the post-monsoon averages were almost 3 times as high as the monsoon season averages. During post-monsoon, the fine mode began to dominate (see Fig. 9), and the build-up process of this fine mode  
25 from secondary sources took a longer time.

**Monsoon and aerosols in India – Part 1**

A.-P. Hyvärinen et al.

[Title Page](#)[Abstract](#)[Introduction](#)[Conclusions](#)[References](#)[Tables](#)[Figures](#)[⏪](#)[⏩](#)[◀](#)[▶](#)[Back](#)[Close](#)[Full Screen / Esc](#)[Printer-friendly Version](#)[Interactive Discussion](#)

### 3.4 Mass distribution and black carbon

The variation of  $PM_{2.5}$  and  $PM_{10}$  concentrations can be seen in Figs. 7 and 8. In Mukteshwar, the average value of  $PM_{2.5}/PM_{10}$  was 0.69, indicating dominance of fine particles (Fig. 9). However, episodic values down to 0.2 were encountered. In Gual Pahari the  $PM_{2.5}/PM_{10}$  fractions were typically lower, with an average of 0.53. Especially in 2008, episodic values down to 0.2 were observed. The high contributions from the coarse mode were related to the break spells of the monsoon. Aerosols from primary sources have a potential to increase quickly, whereas for the fine fraction, the build up process needs more time as the secondary particles have to grow to a have a noteworthy mass. The origin of these episodic high coarse mode concentrations are studied in the next chapter.

The fraction of black carbon (BC) in  $PM_{2.5}$  mass increased from the pre-monsoon during the early monsoon period (Fig. 10), being in average 4.5% during July in Mukteshwar and 13.5% in Gual Pahari. These numbers may not be directly comparable, as BC in Mukteshwar was measured from a  $PM_{2.5}$  inlet and in Gual Pahari from a  $PM_{10}$  inlet. While typically around 90% of the BC mass is accounted in  $PM_{2.5}$  (Putaud et al., 2004), we cannot rule out the possibility that Gual Pahari would be susceptible for primary soot from e.g. incomplete combustion. In fact, this is supported by the observed high BC fraction, which suggests that BC in Gual Pahari was not as effectively removed (or had additional sources) during the monsoon season.

### 3.5 High concentration episodes during the monsoon

As case studies, we characterize the peak concentrations during the monsoon season, and pinpoint possible sources related to them.

As already reported in the literature (e.g., Dey and Tripathi, 2008; Gautam et al., 2009b), the high concentration events were most likely mineral dust. This is backed by information that most of the high concentration events had a  $PM_{2.5}/PM_{10}$  ratio of about 0.1–0.2 indicating a dominant coarse mode from primary particles (Fig. 11). At Gual

[Title Page](#)[Abstract](#)[Introduction](#)[Conclusions](#)[References](#)[Tables](#)[Figures](#)[⏪](#)[⏩](#)[◀](#)[▶](#)[Back](#)[Close](#)[Full Screen / Esc](#)[Printer-friendly Version](#)[Interactive Discussion](#)

Pahari, a high mode at around  $4\ \mu\text{m}$  was seen simultaneously in the volume size distribution data (Hyvärinen et al., 2011). We further analyzed trajectories arriving at the time of the high concentration episodes. In Mukteshwar, these trajectories originated from two directions: the Thar Desert in the south-west, and from the arid regions of the southern slopes Himalayas (Fig. 12a and b). In Gual Pahari, the episodes with the  $\text{PM}_{2.5}/\text{PM}_{10}$  between 0.1–0.2 also originated from Thar Desert (Fig. 12c). It's notable that the highest  $\text{PM}_{10}$  concentrations during the monsoon season were observed in Mukteshwar, not Gual Pahari. While the actual reason for this is unknown, it is likely related to weather and rain patterns during the transport from the source area to the station. Another point worth mentioning is that the dust events occurred mostly before August. The monsoon rains typically begin in the Thar region in August, after which the source strength of re-suspended dust naturally decreases. In Gual Pahari, in addition to dust events, also events with  $\text{PM}_{2.5}/\text{PM}_{10}$  ratio between 0.4 and 0.7 occurred (see Figs. 11 and 12d). These winding air masses advanced slowly, and they all surpassed New Delhi. The higher fraction of fine particles implies that particles were likely from anthropogenic emissions. Re-suspended road dust and construction activities in nearby areas were also likely to contribute to the coarse fraction of these events.

### 3.6 Comparison to health regulation standards

We compared the PM concentrations against health regulation standards set by two quarters: the Indian Pollution Control Board and the World Health Organization. The 24 h and annual guidelines for  $\text{PM}_{2.5}$  and  $\text{PM}_{10}$  differ somewhat depending on the governing body. In Mukteshwar, both  $\text{PM}_{2.5}$  and  $\text{PM}_{10}$  concentrations typically stay below the national 24 h air quality standards, and for  $\text{PM}_{2.5}$  during monsoon season no days exceeding this standard were found (Tables 4 and 5). However, the 24 h guidelines set by the WHO were not so easy to meet, which illustrates that even in this remote site, aerosols would have adverse health effects. In Gual Pahari, the situation was more alarming. The 24 h concentrations were below the National standards only really

## Monsoon and aerosols in India – Part 1

A.-P. Hyvärinen et al.

Title Page

Abstract

Introduction

Conclusions

References

Tables

Figures

◀

▶

◀

▶

Back

Close

Full Screen / Esc

Printer-friendly Version

Interactive Discussion



during the monsoon season, and even during then the guidelines set by the WHO were exceeded on most days.

Finally, we looked how much the monsoon season lowered the long term concentrations. While the lowered concentrations brought breathing space temporarily, they did not affect the long term exposure that much. During our measurements in Mukteshwar, the long term ambient  $PM_{2.5}$  average was  $27.9 \mu g m^{-3}$ . Without the rainy season, this number would have been  $31.3 \mu g m^{-3}$ . In Gual Pahari, the long term ambient  $PM_{2.5}$  average was  $111.3 \mu g m^{-3}$ , and without the rainy season it would have been  $132.6 \mu g m^{-3}$  (Table 4). Similar results were found for  $PM_{10}$  (Table 5). In Mukteshwar, the long term average was below the National annual air quality standards, but still over the annual WHO guidelines. In Gual Pahari, the annual standards were exceeded alarmingly.

## 4 Conclusions

A 4-year data set from Mukteshwar, Indian Himalayas; and a 2-year data set from Gual Pahari, Indo-Gangetic plains were utilized to study the effects of monsoon on atmospheric particulate matter and black carbon. We observed that the average monsoon aerosol concentrations were decreased by 55–70% compared to the pre-monsoon averages at both stations, having a linear relationship with the total local rainfall during the monsoon season. During the monsoon season in Mukteshwar, both  $PM_{2.5}$  and  $PM_{10}$  concentrations were almost always below the Indian National air quality standards. Also the concentrations in Gual Pahari were more often than not under the National air quality levels during the monsoon season. However, the guidelines given by the WHO were more difficult to meet. The monsoon season reduced the long term exposure to both  $PM_{2.5}$  and  $PM_{10}$  by about 10% in Mukteshwar and by about 15% in Gual Pahari. In Mukteshwar the reduction was less, because low concentrations were met also during the post-monsoon and winter.

Both the onset and withdrawal transitions occurred faster in Mukteshwar than in Gual Pahari, being typically less than 10 days. Transition periods in Gual Pahari took

## Monsoon and aerosols in India – Part 1

A.-P. Hyvärinen et al.

Title Page

Abstract

Introduction

Conclusions

References

Tables

Figures

⏪

⏩

◀

▶

Back

Close

Full Screen / Esc

Printer-friendly Version

Interactive Discussion



**Monsoon and aerosols in India – Part 1**

A.-P. Hyvärinen et al.

[Title Page](#)[Abstract](#)[Introduction](#)[Conclusions](#)[References](#)[Tables](#)[Figures](#)[⏪](#)[⏩](#)[◀](#)[▶](#)[Back](#)[Close](#)[Full Screen / Esc](#)[Printer-friendly Version](#)[Interactive Discussion](#)

between 17 and 31 days. This indicates that the aerosol decrease and increase processes were driven differently at the two locations. A probable reason is the altitude difference at the two stations. A higher altitude and the mountain terrain increased the precipitation in the beginning of the monsoon in Mukteshwar, leading to an effective washout. On the other hand, the post-monsoon season in Mukteshwar was represented by low concentrations, and aerosol characteristics were close to those during the monsoon season. The fact that the onset transitions were similar during 2008 and 2009 in Gual Pahari despite the totally different rain accumulation indicates that the initiation of the aerosol decrease was a large scale phenomenon. However, it's interesting that at the end, the monsoon time decrease in aerosol concentrations could be estimated from the local rain amounts only.

In addition to loss processes, aerosol concentrations during the early monsoon were found to be affected by primary emissions, most likely dust events from the Thar Desert. This resulted in lowered  $PM_{2.5}/PM_{10}$  fractions at both stations. In Mukteshwar, additional dust contribution came from the arid regions on the southern slopes of Himalayas.

*Acknowledgements.* Measurements in the Gual Pahari station were funded by the The European Integrated project on Aerosol Cloud Climate and Air Quality Interactions, EUCAARI. We are also grateful for The Ministry of Foreign Affairs of Finland for the funding of the Mukteshwar measurements. Timo Anttila and Ari Halm are acknowledged for technical assistance and Juha Hatakka for trajectory calculations. TERIs staff is acknowledged for their valuable routine maintenance of instruments in Gual Pahari and Mukteshwar stations.

## References

- Bollasina, M., Nigam, S., and Lau, K.-M.: Absorbing aerosols and summer monsoon evolution over South Asia: an observational portrayal, *J. Climate*, 21, 3221–3239, 2008.
- Dey, S. and Tripathi, S. N.: Aerosol direct radiative effects over Kanpur in the Indo-Gangetic basin, Northern India: long-term (2001–2005) observations and implications to regional climate, *J. Geophys. Res.*, 113, D04212, doi:10.1029/2007JD009029, 2008.



## Monsoon and aerosols in India – Part 1

A.-P. Hyvärinen et al.

[Title Page](#)
[Abstract](#)
[Introduction](#)
[Conclusions](#)
[References](#)
[Tables](#)
[Figures](#)
[Back](#)
[Close](#)
[Full Screen / Esc](#)
[Printer-friendly Version](#)
[Interactive Discussion](#)


Gurjar, B. R., Jain, A., Sharma, A., Agarwal, A., Gupta, P., Nagpure, A. S., and Lelieveld, J.: Human health risks in megacities due to air pollution, *Atmos. Environ.*, 44, 36, 4606–4613, doi:10.1016/j.atmosenv.2010.08.011, 2010.

Hyvärinen, A.-P., Lihavainen, H., Komppula, M., Sharma, V. P., Kerminen, V.-M., Panwar, T. S., and Viisanen, Y.: Continuous measurements of optical properties of atmospheric aerosols in Mukteshwar, Northern India, *J. Geophys. Res.*, 114, D08207, doi:10.1029/2008JD011489, 2009.

Hyvärinen, A.-P., Lihavainen, H., Komppula, M., Panwar, T. S., Sharma, V. P., Hooda, R. K., and Viisanen, Y.: Aerosol measurements at the Gual Pahari EUCAARI station: preliminary results from in-situ measurements, *Atmos. Chem. Phys.*, 10, 7241–7252, doi:10.5194/acp-10-7241-2010, 2010.

Hyvärinen, A.-P., Raatikainen, T., Komppula, M., Mielonen, T., Sundström, A.-M., Brus, D., Panwar, T. S., Hooda, R. K., Sharma, V. P., deLeeuw, G., Viisanen, Y., and Lihavainen, H.: Effect of the summer monsoon on aerosols at two measurement stations in Northern India – Part 2: Physical and optical properties, *Atmos. Chem. Phys. Discuss.*, *Atmos. Chem. Phys. Discuss.*, 11, 1749–1775, doi:10.5194/acpd-11-1-2011, 2011.

Komppula, M., Lihavainen, H., Hyvärinen, A.-P., Kerminen, V.-M., Panwar, T. S., Sharma, V. P., and Viisanen, Y.: Physical properties of aerosol particles at a Himalayan background site in India, *J. Geophys. Res.*, 114, D12202, doi:10.1029/2008JD011007, 2009.

Komppula, M., Mielonen, T., Arola, A., Korhonen, K., Lihavainen, H., Hyvärinen, A.-P., Baars, H., Engelmann, R., Althausen, D., Ansmann, A., Müller, D., Panwar, T. S., Hooda, R. K., Sharma, V. P., Kerminen, V.-M., Lehtinen, K. E. J., and Viisanen, Y.: One year of Raman-lidar measurements in Gual Pahari EUCAARI site close to New Delhi in India: seasonal characteristics of the aerosol vertical structure, *Atmos. Chem. Phys. Discuss.*, 10, 31123–31151, doi:10.5194/acpd-10-31123-2010, 2010.

Lau, K. M. and Kim, K.-M.: Observational relationship between aerosol and Asian rainfall and circulation, *Geophys. Res. Lett.*, 33, L21810, doi:10.1029/2006GL027546, 2006.

Lelieveld, J., Crutzen, P. J., Ramanathan, V., Andreae, M. O., Brenninkmeijer, C. A. M., Campos, T., Cass, G. R., Dickerson, R. R., Fischer, H., de Gouw, J. A., Hansel, A., Jefferson, A., Kley, D., de Laat, A. T. J., Lal, S., Lawrence, M. G., Lobert, J. M., Mayol-Bracero, O. L., Mitra, A. P., Novakov, T., Oltmans, S. J., Prather, K. A., Reiner, T., Rodhe, H., Scheeren, H. A., Sikka D., and Williams, J.: The Indian Ocean Experiment: widespread air pollution from South and Southeast Asia, *Science* 291, 1031–1036, 2001.



## Monsoon and aerosols in India – Part 1

A.-P. Hyvärinen et al.

[Title Page](#)
[Abstract](#)
[Introduction](#)
[Conclusions](#)
[References](#)
[Tables](#)
[Figures](#)
[Back](#)
[Close](#)
[Full Screen / Esc](#)
[Printer-friendly Version](#)
[Interactive Discussion](#)


- Nakajima, T., Yoon, S.-C., Ramanathan, V., Shi, G.-Y., Takemura, T., Higurashi, A., Takamura, T., Aoki, K., Sohn, B.-J., Kim, S.-W., Tsuruta, H., Sugimoto, N., Shimizu, A., Tanimoto, H., Sawa, Y., Lin, N.-H., Lee, C.-T., Goto, D., and Schutgens, N.: Overview of the atmospheric Brown Cloud East Asian Regional Experiment 2005 and a study of the aerosol direct radiative forcing in East Asia, *J. Geophys. Res.*, 112, D24S91, doi:10.1029/2007JD009009, 2007.
- Meehl, G. A., Arblaster, J. M., and Collins, W. D.: Effects of black carbon aerosols on the indian monsoon, *J. Climate*, 21, 2869–2882, 2008.
- Panwar, T. S., Hooda, R. K., Lihavainen, H., Hyvärinen, A.-P., Sharma, V. P., and Viisanen, Y.: Atmospheric aerosols at a regional background Himalayan site - Mukteshwar, India, *Environmen. Monit. Assess.*, in review, 2010.
- Putaud, J.-P., Raes, F., Van Dingenen, R., Brüggemann, E., Facchini, M.-C., Decesari, S., Fuzzi, S., Gehrig, R., Hüglin, C., Laj, P., Lorbeer, G., Maenhaut, W., Mihalopoulos, N., Müller, K., Querol, X., Rodriguez, S., Schneider, J., Spindler, G., ten Brink, H., Tørseth, K., and Wiedensohler, A.: A European aerosol phenomenology – 2: Chemical characteristics of particulate matter at kerbside, urban, rural and background sites in Europe, *Atmos. Environ.*, 38, 2579–2595, 2004.
- Raatikainen, T., Hyvärinen, A.-P., Hatakka, J., Panwar, T. S., Hooda, R. K., Sharma, V. P., and Lihavainen, H.: Comparison of aerosol properties from a background site at the Himalayas and an urban site at the Indo-Gangetic plains in India, *Atmos. Chem. Phys. Discuss.*, submitted, 2011.
- Ramanathan, V., Li, F., Ramana, M. V., Praveen, P. S., Kim, D., Corrigan, C. E., Nguyen, H., Stone, E. A., Schauer, J. J., Carmichael, G. R., Adhikary, B., and Yoon, S. C.: Atmospheric brown clouds: hemispherical and regional variations in long-range transport, absorption, and radiative forcing, *J. Geophys. Res.*, 112, D22S21, doi:10.1029/2006JD008124, 2007.
- Stohl, A., Wotawa, G., Seibert, P., and Kromp-Kolb, H.: Interpolation errors in wind fields as a function of spatial and temporal resolution and their impact on different types of kinematic trajectories, *J. Appl. Meteorol.*, 34, 2149–2165, 1995.
- Tyagi, A., Hatwar, H. R., and Pai, D. S. (Eds.): *Monsoon 2008*, a report, Government of India, India Meteorological Department, 2009.
- Tyagi, A., Hatwar, H. R., and Pai, D. S. (Eds.): *Monsoon 2009*, a report, Government of India, India Meteorological Department, 2010.

## Monsoon and aerosols in India – Part 1

A.-P. Hyvärinen et al.

Title Page

Abstract

Introduction

Conclusions

References

Tables

Figures

◀

▶

◀

▶

Back

Close

Full Screen / Esc

Printer-friendly Version

Interactive Discussion



**Table 1.** Onset/withdrawal dates of monsoon in Mukteshwar and Gual Pahari. Total rainfall during the monsoon period, calculated from monthly data between June–September.

|      | Onset               |                     | Withdrawal          | Rainfall (mm) |             |
|------|---------------------|---------------------|---------------------|---------------|-------------|
|      | Mukteshwar          | Gual Pahari         | Both                | Mukteshwar    | Gual Pahari |
| 2006 | 30 Jun <sup>1</sup> | 30 Jun <sup>1</sup> | 27 Sep <sup>1</sup> | 760           | 341         |
| 2007 | 18 Jun <sup>1</sup> | 30 Jun <sup>1</sup> | 2 Oct <sup>1</sup>  | 922           | 424         |
| 2008 | 16 Jun <sup>2</sup> | 16 Jun <sup>2</sup> | 28 Sep <sup>2</sup> | 1710          | 573         |
| 2009 | 29 Jun <sup>3</sup> | 30 Jun <sup>3</sup> | 28 Sep <sup>3</sup> | 780           | 420         |

<sup>1</sup> [http://www.imd.gov.in/section/nhac/dynamic/Monsoon\\_frame.htm](http://www.imd.gov.in/section/nhac/dynamic/Monsoon_frame.htm).

<sup>2</sup> Tyagi et al. (2009).

<sup>3</sup> Tyagi et al. (2010).

## Monsoon and aerosols in India – Part 1

A.-P. Hyvärinen et al.

**Table 2.** Difference between the monsoon and pre-monsoon aerosol concentrations in Mukteshwar and Gual Pahari.

| Year               | BC <sub>e</sub><br>μgm <sup>-3</sup> | PM <sub>2.5</sub><br>μgm <sup>-3</sup> | PM <sub>10</sub><br>μgm <sup>-3</sup> |
|--------------------|--------------------------------------|--|---------------------------------------|
| <b>Mukteshwar</b>  |                                      |  |                                       |
| 2006 Pre/Monsoon   | 1.09/0.39                            | 37.2/14.9                              | 73.0/34.0                             |
| % diff             | -64.6                                | -60.0                                  | -53.4                                 |
| 2007 Pre/Monsoon   | 1.29/0.48                            | –                                      | –                                     |
| % diff             | -62.9                                |  |                                       |
| 2008 Pre/Monsoon   | 1.26/0.37                            | 46.3/15.1                              | /23.3                                 |
| % diff             | -70.4                                | -67.5                                  | –                                     |
| 2009 Pre/Monsoon   | 1.24/–                               | 51.8/22.4                              | 82.4/34.3                             |
| % diff             | –                                    | -56.8                                  | -58.4                                 |
| <b>Gual Pahari</b> |                                      |  |                                       |
| 2008 Pre/Monsoon   | 8.38/–                               | 88.3/37.4                              | 165.0/82.4                            |
| % diff             | –                                    | -57.7                                  | -50.1                                 |
| 2009 Pre/Monsoon   | 8.03/3.64                            | 105.4/42.7                             | 180.4/78.2                            |
| % diff             | -54.6                                | -59.5                                  | -56.6                                 |

[Title Page](#)
[Abstract](#)
[Introduction](#)
[Conclusions](#)
[References](#)
[Tables](#)
[Figures](#)
[Back](#)
[Close](#)
[Full Screen / Esc](#)
[Printer-friendly Version](#)
[Interactive Discussion](#)


## Monsoon and aerosols in India – Part 1

A.-P. Hyvärinen et al.

Title Page

Abstract

Introduction

Conclusions

References

Tables

Figures

⏪

⏩

◀

▶

Back

Close

Full Screen / Esc

Printer-friendly Version

Interactive Discussion



**Table 3.** Characteristic transition times for the monsoon season onset and withdrawal according to aerosol concentration changes. See text for details.

|      | Mukteshwar onset | Mukteshwar withdrawal | Gual Pahari onset | Gual Pahari withdrawal |
|------|------------------|-----------------------|-------------------|------------------------|
| 2006 | 6.5 d            | 4 d                   | –                 | –                      |
| 2007 | 2 d              | 12 d                  | –                 | –                      |
| 2008 | 6 d              | 3 d                   | 29 d              | 17 d                   |
| 2009 | 9.5 d            | –                     | 23 d              | 31 d                   |

## Monsoon and aerosols in India – Part 1

A.-P. Hyvärinen et al.

[Title Page](#)[Abstract](#)[Introduction](#)[Conclusions](#)[References](#)[Tables](#)[Figures](#)[⏪](#)[⏩](#)[◀](#)[▶](#)[Back](#)[Close](#)[Full Screen / Esc](#)[Printer-friendly Version](#)[Interactive Discussion](#)

**Table 4.** Percentage of days exceeding the 24 h PM<sub>2.5</sub> guideline value set either by the Indian National Air Pollution Board or the WHO. In addition the campaign averages are shown in ambient concentrations with and without the monsoon season.

| Standard<br>24 h /annual<br>Days<br>exceeding | National<br>60 $\mu\text{gm}^{-3}$ |                   | WHO<br>25 $\mu\text{gm}^{-3}$ |                   | National<br>40 $\mu\text{gm}^{-3}$ | WHO<br>10 $\mu\text{gm}^{-3}$ |
|---|------------------------------------|-------------------|-------------------------------|-------------------|------------------------------------|-------------------------------|
|   | Outside<br>monsoon                 | During<br>monsoon | Outside<br>monsoon            | During<br>monsoon | Average<br>all time                | Average no<br>monsoon         |
| Mukteshwar                                    | 10%                                | 0%                | 51%                           | 26%               | 28 $\mu\text{gm}^{-3}$             | 31 $\mu\text{gm}^{-3}$        |
| Gual Pahari                                   | 87%                                | 13%               | 99%                           | 81%               | 111 $\mu\text{gm}^{-3}$            | 133 $\mu\text{gm}^{-3}$       |

## Monsoon and aerosols in India – Part 1

A.-P. Hyvärinen et al.

**Table 5.** Percentage of days exceeding the 24 h PM<sub>10</sub> guideline value set either by the National Air Pollution Board or the WHO. In addition the campaign averages are shown in ambient concentrations with and without the monsoon season.

| Standard<br>24 h /annual<br>Days<br>exceeding | National<br>100 µgm <sup>-3</sup> |                   | WHO<br>50 µgm <sup>-3</sup> |                   | National<br>60 µgm <sup>-3</sup> | WHO<br>20 µgm <sup>-3</sup> |
|---|-----------------------------------|-------------------|-----------------------------|-------------------|----------------------------------|-----------------------------|
|   | Outside<br>monsoon                | During<br>monsoon | Outside<br>monsoon          | During<br>monsoon | Average<br>all time              | Average no<br>monsoon       |
| Mukteshwar                                    | 11%                               | 2%                | 44%                         | 19%               | 45 µgm <sup>-3</sup>             | 51 µgm <sup>-3</sup>        |
| Gual Pahari                                   | 94%                               | 29%               | 99%                         | 77%               | 188 µgm <sup>-3</sup>            | 227 µgm <sup>-3</sup>       |

Title Page

Abstract

Introduction

Conclusions

References

Tables

Figures

◀

▶

◀

▶

Back

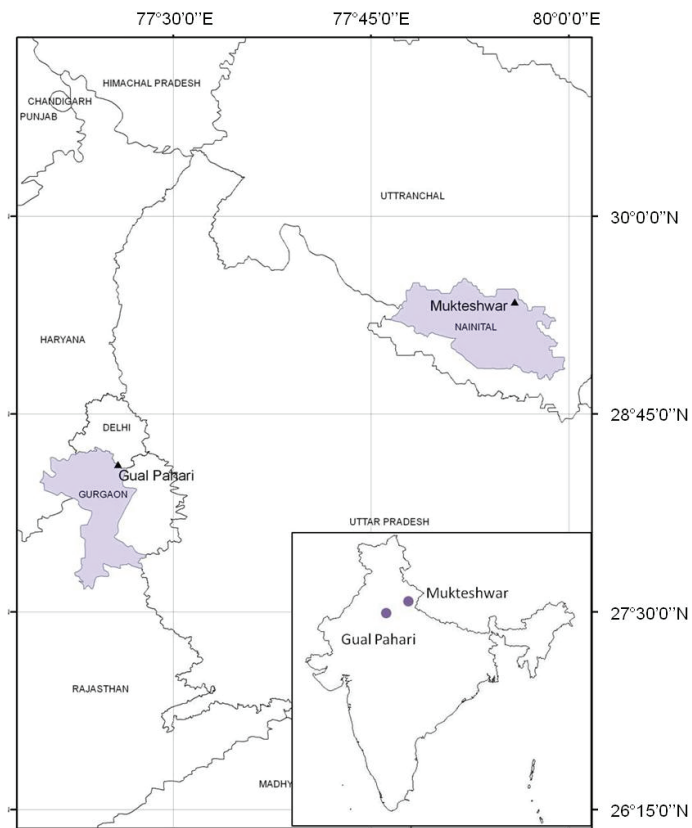
Close

Full Screen / Esc

Printer-friendly Version

Interactive Discussion





**Fig. 1.** Locations of the Gual Pahari and Mukteshwar measurement stations.

**Monsoon and aerosols in India – Part 1**

A.-P. Hyvärinen et al.

Title Page

Abstract Introduction

Conclusions References

Tables Figures

⏪ ⏩

◀ ▶

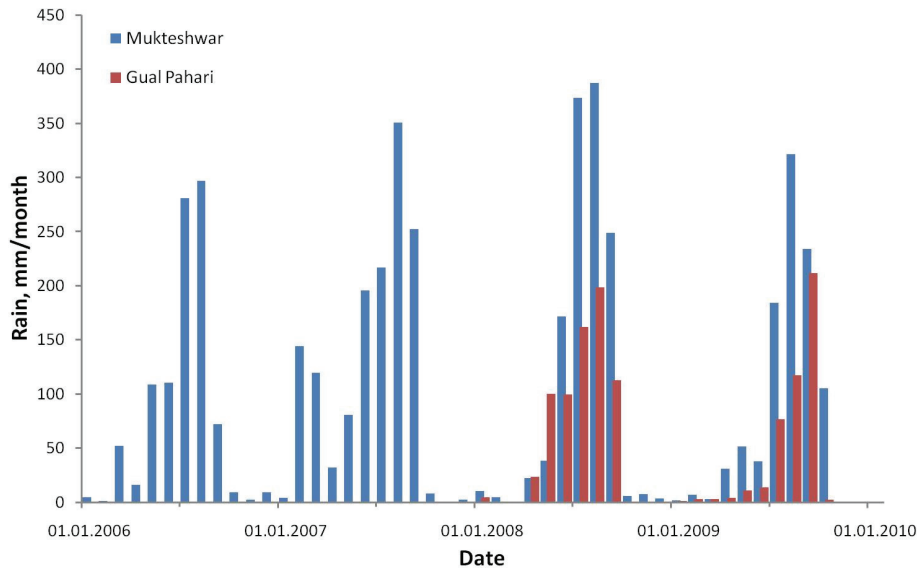
Back Close

Full Screen / Esc

Printer-friendly Version

Interactive Discussion





**Fig. 2.** Monthly rain accumulation during running of the measurement stations.

**Monsoon and aerosols in India – Part 1**

A.-P. Hyvärinen et al.

Title Page

Abstract Introduction

Conclusions References

Tables Figures

⏪ ⏩

◀ ▶

Back Close

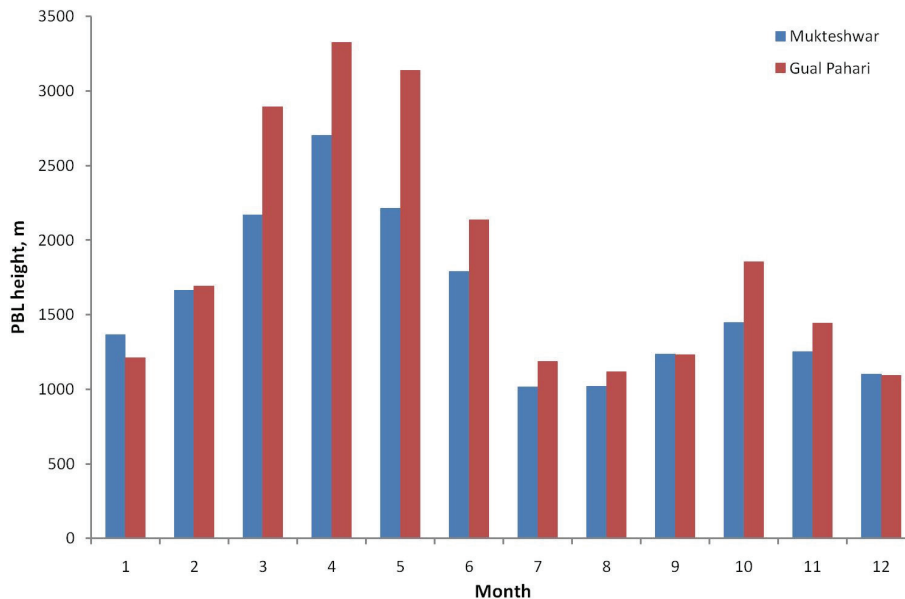
Full Screen / Esc

Printer-friendly Version

Interactive Discussion







**Fig. 3.** Annual variation for the averaged daily maximum boundary layer heights (PBL) obtained from the European Centre for Medium-Range Weather Forecasts (ECMWF).

**Monsoon and aerosols in India – Part 1**

A.-P. Hyvärinen et al.

Title Page

Abstract Introduction

Conclusions References

Tables Figures

◀ ▶

◀ ▶

Back Close

Full Screen / Esc

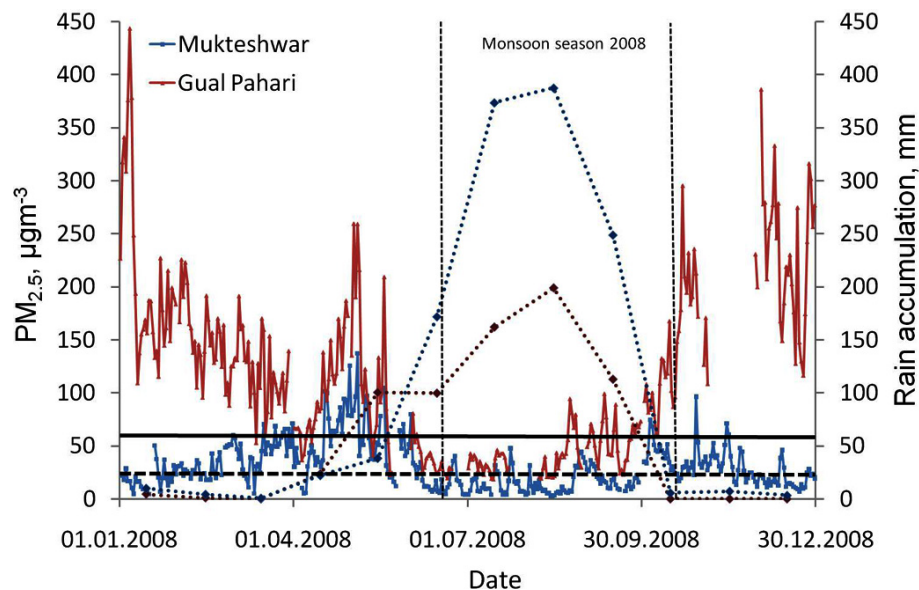
Printer-friendly Version

Interactive Discussion



## Monsoon and aerosols in India – Part 1

A.-P. Hyvärinen et al.



**Fig. 4.**  $PM_{2.5}$  and rain accumulation at Mukteshwar and Gual Pahari during 2008. Solid lines denote to daily 24 h PM concentrations, dotted lines to monthly rain accumulation. Horizontal black line is the Indian national 24 h ambient air quality  $PM_{2.5}$  standard of  $60 \mu\text{g m}^{-3}$ , horizontal dotted line the corresponding WHO guideline of  $25 \mu\text{g m}^{-3}$ . Concentrations are in ambient conditions.

Title Page

Abstract

Introduction

Conclusions

References

Tables

Figures

◀

▶

◀

▶

Back

Close

Full Screen / Esc

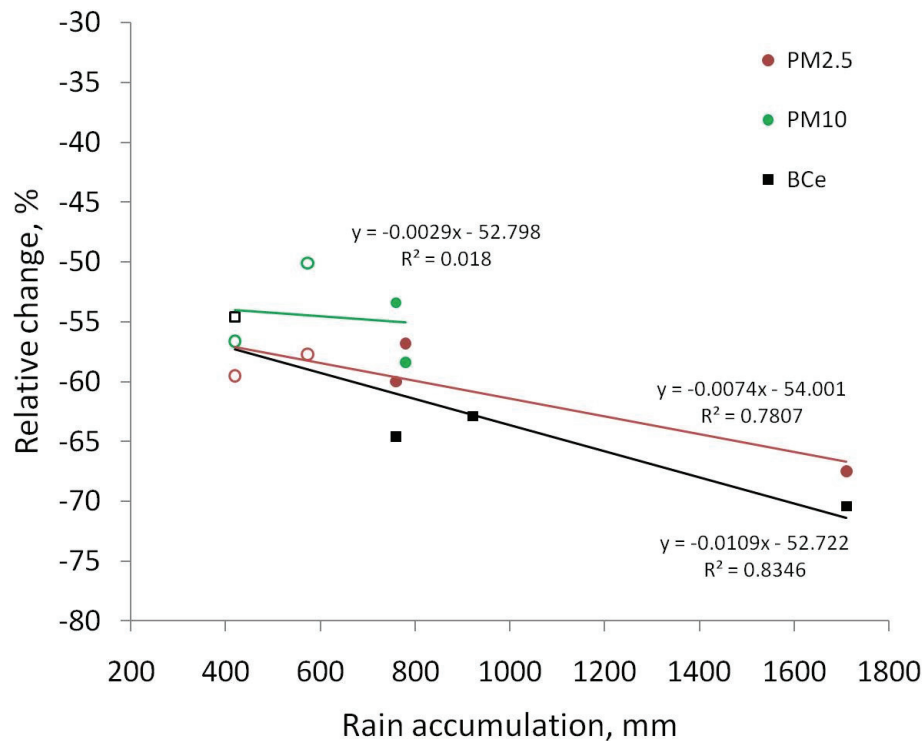
Printer-friendly Version

Interactive Discussion



**Monsoon and aerosols in India – Part 1**

A.-P. Hyvärinen et al.



**Fig. 5.** The relative change of the aerosol mass concentrations from the pre-monsoon to monsoon season as a function of the June–September rain accumulation. Solid symbols: data from Mukteshwar; open symbols: data from Gual Pahari.

Title Page

Abstract

Introduction

Conclusions

References

Tables

Figures

◀

▶

◀

▶

Back

Close

Full Screen / Esc

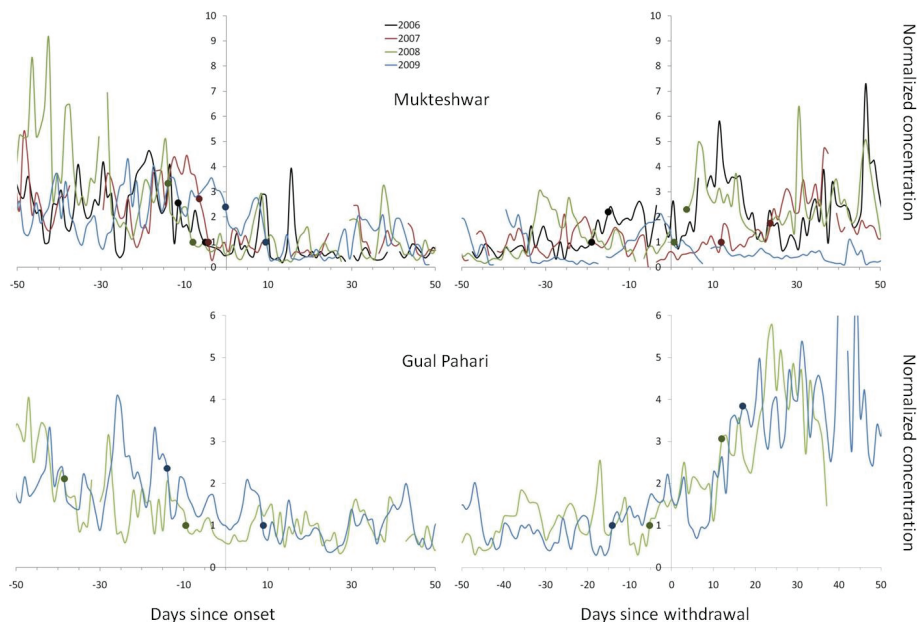
Printer-friendly Version

Interactive Discussion



## Monsoon and aerosols in India – Part 1

A.-P. Hyvärinen et al.

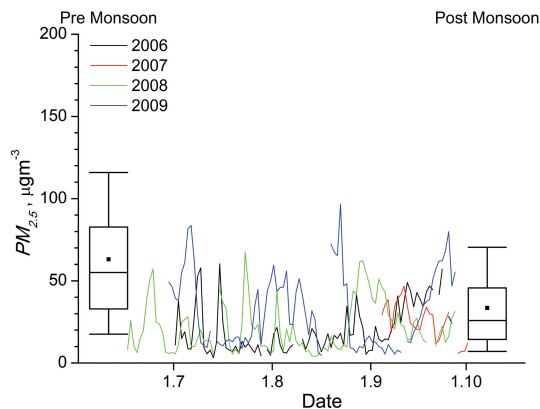


**Fig. 6.** Transient periods between the pre-monsoon/monsoon and monsoon/post-monsoon season at Mukteshwar and Gual Pahari. Relative concentrations are 24-h averages of normalized  $PM_{2.5}$ ,  $PM_{10}$  and BC concentrations with annual monsoon means set to unity for each property. Dots mark the beginning and ending of the transient periods.

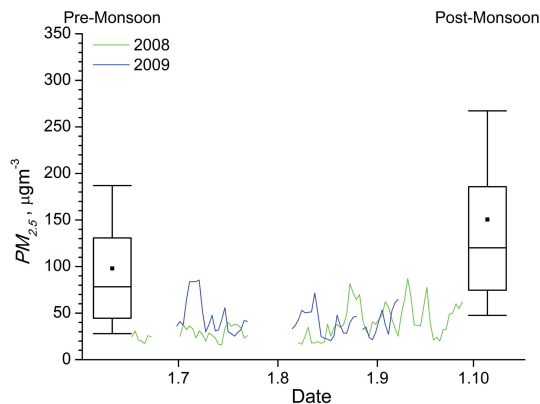
[Title Page](#)
[Abstract](#)
[Introduction](#)
[Conclusions](#)
[References](#)
[Tables](#)
[Figures](#)
[◀](#)
[▶](#)
[◀](#)
[▶](#)
[Back](#)
[Close](#)
[Full Screen / Esc](#)
[Printer-friendly Version](#)
[Interactive Discussion](#)


## Monsoon and aerosols in India – Part 1

A.-P. Hyvärinen et al.



a)



b)

**Fig. 7.**  $PM_{2.5}$  mass. **(a)** Mukteshwar **(b)** Gual Pahari. Lines are 24 h running averages from the monsoon season, box plots denote to seasonal values of 10%-ile, 25%-ile, median (line), average (dot), 75%-ile, and 90%-ile. Concentrations are in STP conditions.

Title Page

Abstract

Introduction

Conclusions

References

Tables

Figures

◀

▶

◀

▶

Back

Close

Full Screen / Esc

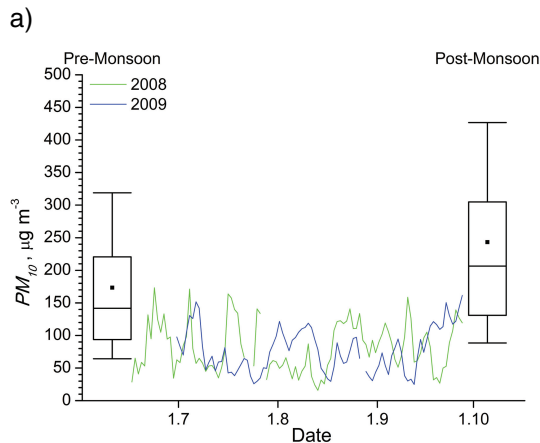
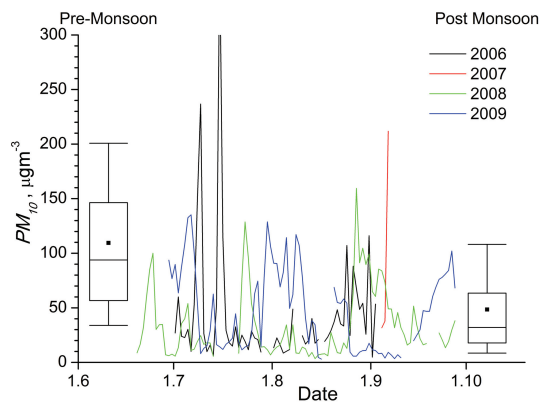
Printer-friendly Version

Interactive Discussion



## Monsoon and aerosols in India – Part 1

A.-P. Hyvärinen et al.



b)

**Fig. 8.**  $PM_{10}$  mass. **(a)** Mukteshwar **(b)** Gual Pahari. Lines are 24 h running averages from the monsoon season, box plots denote to seasonal values of 10%-ile, 25%-ile, median (line), average (dot), 75%-ile, and 90%-ile. Concentrations are in STP conditions.

Title Page

Abstract

Introduction

Conclusions

References

Tables

Figures

◀

▶

◀

▶

Back

Close

Full Screen / Esc

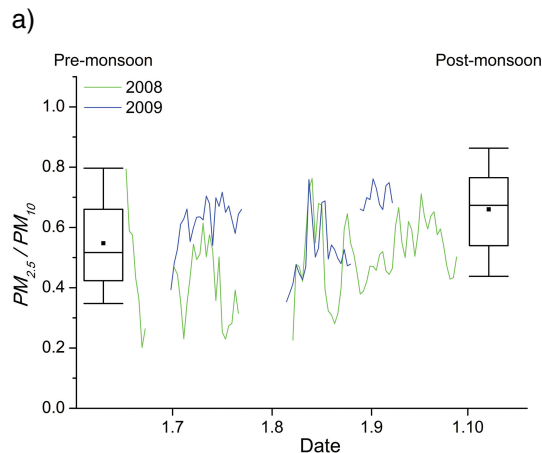
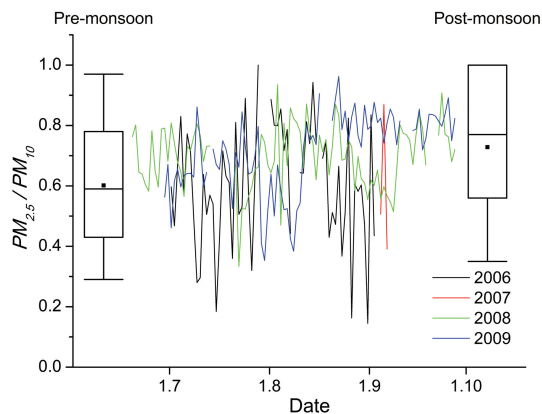
Printer-friendly Version

Interactive Discussion



## Monsoon and aerosols in India – Part 1

A.-P. Hyvärinen et al.



b)

**Fig. 9.** Fraction of  $PM_{2.5}$  in  $PM_{10}$  mass. **(a)** Mukteshwar **(b)** Gual Pahari. Lines are 24 h running averages from the monsoon season, box plots denote to seasonal values of 10%-ile, 25%-ile, median (line), average (dot), 75%-ile, and 90%-ile.

Title Page

Abstract

Introduction

Conclusions

References

Tables

Figures

◀

▶

◀

▶

Back

Close

Full Screen / Esc

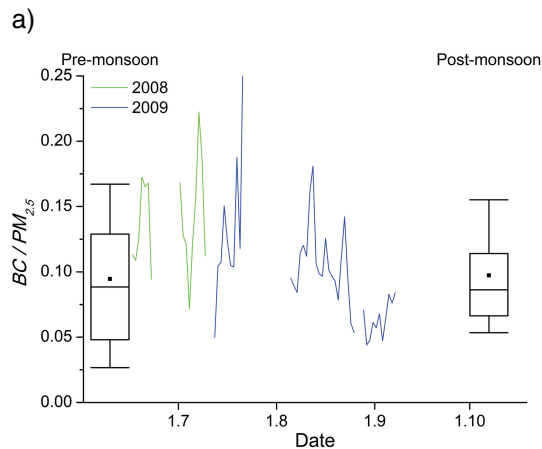
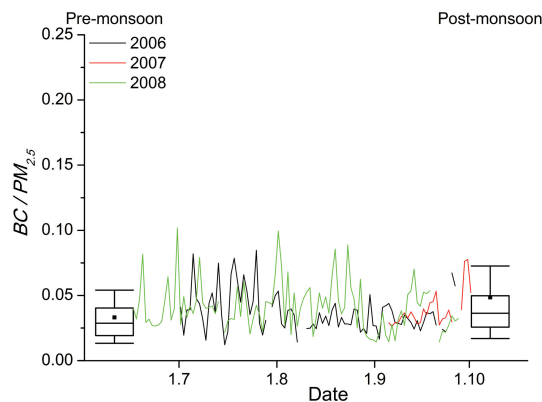
Printer-friendly Version

Interactive Discussion



## Monsoon and aerosols in India – Part 1

A.-P. Hyvärinen et al.



b)

**Fig. 10.** Fraction of black carbon (BC) in  $PM_{2.5}$  mass. **(a)** Mukteshwar **(b)** Gual Pahari. Lines are 24 h running averages from the monsoon season, box plots denote to seasonal values of 10%-ile, 25%-ile, median (line), average (dot), 75%-ile, and 90%-ile.

Title Page

Abstract

Introduction

Conclusions

References

Tables

Figures

◀

▶

◀

▶

Back

Close

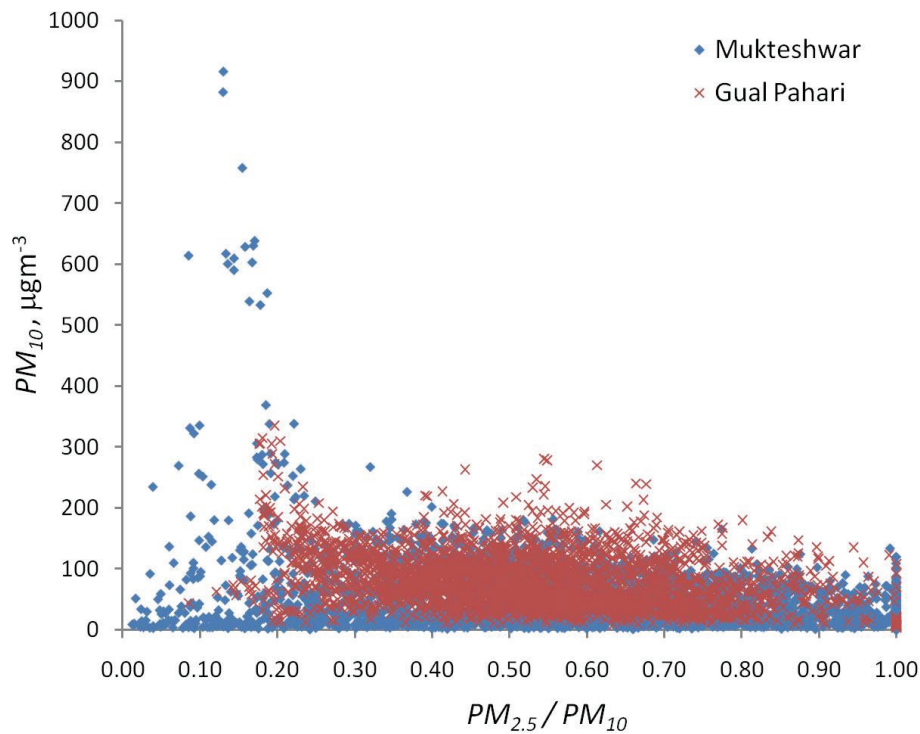
Full Screen / Esc

Printer-friendly Version

Interactive Discussion







**Fig. 11.** PM<sub>10</sub> mass during the monsoon season as a function of the PM<sub>2.5</sub>/PM<sub>10</sub> ratio. Concentrations are in STP conditions.

**Monsoon and aerosols in India – Part 1**

A.-P. Hyvärinen et al.

Title Page

Abstract Introduction

Conclusions References

Tables Figures

◀ ▶

◀ ▶

Back Close

Full Screen / Esc

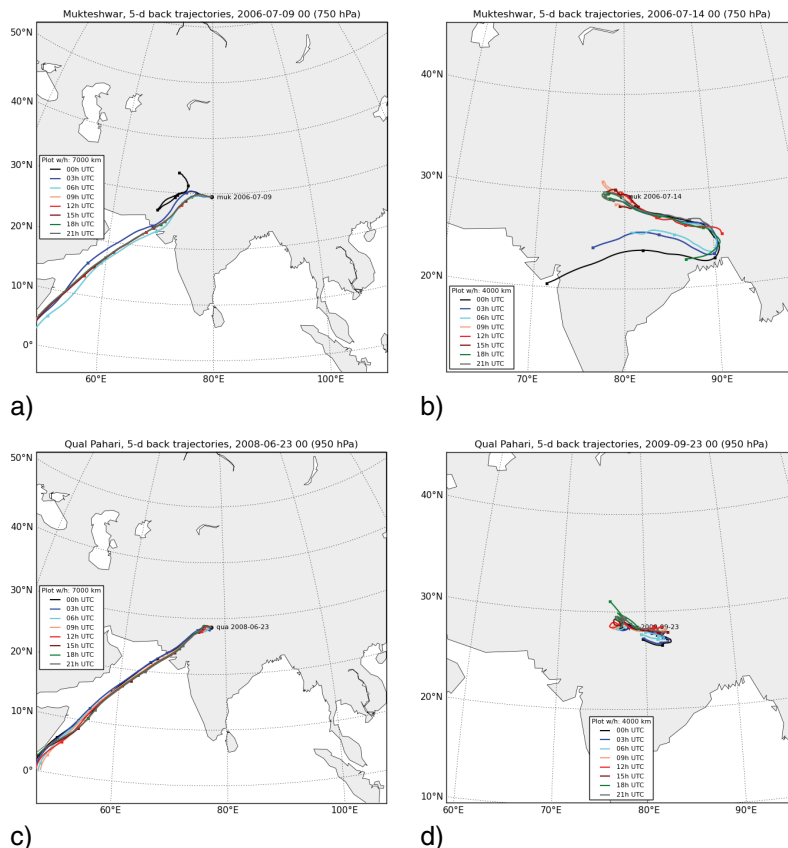
Printer-friendly Version

Interactive Discussion



**Monsoon and aerosols in India – Part 1**

A.-P. Hyvärinen et al.



**Fig. 12.** 5-day calculated backtrack trajectories from example high concentration episodes during monsoon in Gual Pahari and Mukteshwar. **(a)** and **(c)** Mineral dust from the Thar desert. **(b)** mineral dust from southern slopes of Himalayas. **(d)** anthropogenic emissions from local sources and New Delhi.

Title Page

Abstract Introduction

Conclusions References

Tables Figures

◀ ▶

◀ ▶

Back Close

Full Screen / Esc

Printer-friendly Version

Interactive Discussion

