

**Wave effects on
PSCs**

M. Kohma and K. Sato

This discussion paper is/has been under review for the journal Atmospheric Chemistry and Physics (ACP). Please refer to the corresponding final paper in ACP if available.

The effects of atmospheric waves on the amounts of polar stratospheric clouds

M. Kohma and K. Sato

Department of Earth and Planetary Science, The University of Tokyo, Tokyo, Japan

Received: 27 May 2011 – Accepted: 12 June 2011 – Published: 20 June 2011

Correspondence to: M. Kohma (kohmasa@eps.s.u-tokyo.ac.jp)

Published by Copernicus Publications on behalf of the European Geosciences Union.

Title Page

Abstract

Introduction

Conclusions

References

Tables

Figures

◀

▶

◀

▶

Back

Close

Full Screen / Esc

Printer-friendly Version

Interactive Discussion



Abstract

A quantitative analysis on the relationship between atmospheric waves and polar stratospheric clouds (PSCs) in the 2008 austral winter and the 2007/2008 boreal winter is made using CALIPSO, COSMIC and Aura MLS observation data and reanalysis data. A longitude-time section of the frequency of PSC occurrence in the Southern Hemisphere indicates that PSC frequency is not regionally uniform and that high PSC frequency regions propagate eastward at different speeds from the background zonal wind. These features suggest a significant influence of atmospheric waves on PSC behavior. Next, three temperature thresholds for PSC existence are calculated using HNO_3 and H_2O mixing ratios. Among the three, the T_{STS} (a threshold for super cooled ternary solution)-based estimates of PSC frequency accord best with the observations in terms of the amount, spatial and temporal variation, in particular for the latitude range of 55°S – 70°S in the Southern Hemisphere and for 55°N – 85°N in the Northern Hemisphere. Moreover, the effects of planetary waves, synoptic-scale waves and gravity waves on PSC areal extent are separately examined using the T_{STS} -based PSC estimates. The latitude range of 55°S – 70°S is analyzed because the T_{STS} -based estimates are not consistent with observations at higher latitudes ($< 75^\circ\text{S}$) above 18 km, and PSCs in lower latitudes are more important to the ozone depletion because of the earlier arrival of solar radiation in spring. It is shown that nearly 100 % of PSCs between 55°S and 70°S at altitudes of 16–24 km are formed by temperature modulation, which is influenced by planetary waves during winter. Although the effects of synoptic-scale waves on PSCs are limited, around an altitude of 12 km more than 60 % of the total PSC areal extent is formed by synoptic-scale waves. The effects of gravity waves on PSC areal extent are not large in the latitude range of 55°S – 70°S . However, at higher latitudes, gravity waves act to increase PSC areal extent at an altitude of 15 km by about 30 % in September. Similar analyses are performed for the Northern Hemisphere. It is shown that almost all PSCs observed in the Northern Hemisphere are attributable to low temperature anomalies associated with planetary waves.

Wave effects on PSCs

M. Kohma and K. Sato

Title Page

Abstract

Introduction

Conclusions

References

Tables

Figures

◀

▶

◀

▶

Back

Close

Full Screen / Esc

Printer-friendly Version

Interactive Discussion



1 Introduction

Polar stratospheric clouds (PSCs) are the clouds that appear in the lower stratosphere in polar regions and play two key roles in the catalytic destruction of polar stratospheric ozone (Solomon, 1999). First, PSC particles serve as an environment for heterogeneous reactions that convert inactive chlorine and bromine reservoirs into reactive forms of chlorine and bromine. Second, the uptake of HNO_3 into PSC particles and subsequent gravitational sedimentation of the particles remove reactive odd nitrogen NO_y from the lower stratosphere (denitrification), which extends the lifetime of reactive chlorine significantly.

Although PSCs are observed at high latitudes in both hemispheres, PSCs appear more frequently in the Antarctic than in the Arctic because temperatures in the Antarctic are generally lower than in the Arctic due to weaker planetary wave activity in the Antarctic. Although PSCs are commonly observed over most of the Antarctic region in austral winter (June to September), the most favorable regions for PSCs are over the Antarctic Peninsula and ice sheets of the East Antarctic (Pitts et al., 2007; Wang et al., 2008). In contrast, PSCs appear sporadically in the Northern Hemisphere winter. In particular, PSC amounts significantly decrease when sudden stratospheric warming occurs. The larger amounts of PSCs in the Antarctic lead to more intense denitrification than in the Arctic. The difference in the PSC climatology and evolution of chemical compositions between the two hemispheres results in asymmetry in stratospheric ozone depletion (Solomon, 1999).

Since PSCs were recorded first in 1901 by the Danish painter Jorgensen, a lot of observations of PSCs have been performed based on remote sensing technologies such as ground-based, airborne, and satellite lidars. Previous observational studies have shown the climatology of PSCs in terms of their occurrence at low temperatures, spatial distribution and seasonal variability. Lidar observations showed that PSCs are categorized into three major types: nitric acid tri-hydrate (NAT, Type 1a), super-cooled liquid ternary solution droplets (STS, Type 1b) and water ice (Type 2). PSCs containing

Wave effects on PSCs

M. Kohma and K. Sato

Title Page

Abstract

Introduction

Conclusions

References

Tables

Figures

◀

▶

◀

▶

Back

Close

Full Screen / Esc

Printer-friendly Version

Interactive Discussion



**Wave effects on
PSCs**

M. Kohma and K. Sato

Title Page

Abstract

Introduction

Conclusions

References

Tables

Figures

◀

▶

◀

▶

Back

Close

Full Screen / Esc

Printer-friendly Version

Interactive Discussion



high number densities of NAT can act as mother clouds for extremely large NAT particles (so called “NAT rocks”) (Fahey et al., 2001; Fueglistaler et al., 2002). These rock particles efficiently remove HNO_3 from the lower stratosphere with their large sedimentation velocity (Fahey et al., 2001; Shibata et al., 2003). The NAT formation temperature (T_{NAT}) is derived by Hanson and Mauersberger (1988), and although dominant nucleation mechanisms remain uncertain and controversial (Lowe and MacKenzie, 2008), the estimation of PSCs using T_{NAT} is successful (Rex et al., 2004). STS particles which are composed of ternary $\text{HNO}_3/\text{H}_2\text{SO}_4/\text{H}_2\text{O}$ particles (Rosen, 1971) are formed by the condensational growth of background stratospheric aerosols. Carslaw et al. (1998) show that these particles are observed in regions where the temperature is lower than 3–4 K below T_{NAT} (T_{STS}). STS particles do not grow large enough to cause a significant denitrification through their sedimentation. Ice particles can exist at temperatures below frost point (T_{ICE}). Previous studies (Tabazadeh et al., 1997; Koop et al., 1998; Carslaw et al., 1999) show by laboratory experiments and observations that ice particles form at temperatures of 2–4 K below T_{ICE} ($T_{\text{ICE-NU}}$). In the Antarctic, synoptic-scale temperature fields can be lower than $T_{\text{ICE-NU}}$, while temperatures in the Arctic is rarely below $T_{\text{ICE-NU}}$, except for regions where gravity waves are dominant (e.g., Carslaw et al., 1998).

Atmospheric waves such as planetary-scale, synoptic-scale and gravity waves can cause strong temperature fluctuations in the stratosphere and hence affect PSC amounts and compositions. Teitelbaum and Sadourny (1998) observed PSCs in the Arctic and Antarctic in association with strong planetary-scale uplifts of isentropic surfaces, in which air temperature lowers while mixing ratios of minor constituents are maintained. Also, PSCs and localized ozone minima have been observed in the Arctic, along with the appearance of synoptic-scale anticyclonic potential vorticity anomalies near the tropopause, which cause an uplift of isentropic surfaces in the lower stratosphere (Teitelbaum et al., 2001).

Gravity waves are thought to be responsible for NAT nucleation in the Arctic. Several studies show that ice particles are formed in low temperature anomalies in association

**Wave effects on
PSCs**

M. Kohma and K. Sato

[Title Page](#)[Abstract](#)[Introduction](#)[Conclusions](#)[References](#)[Tables](#)[Figures](#)[◀](#)[▶](#)[◀](#)[▶](#)[Back](#)[Close](#)[Full Screen / Esc](#)[Printer-friendly Version](#)[Interactive Discussion](#)

with topographically-forced gravity waves (mountain waves) and that NAT PSCs grow through heterogeneous nucleation on the ice (Carslaw et al., 1998). Using models including PSC microphysics and mountain waves, Höpfner et al. (2006) and Eckermann et al. (2009) show that the heterogeneous nucleation of NAT particles on ice caused by mountain waves around the Antarctic Peninsula and Ellsworth Mountains may explain the distribution of NAT particles observed by the Michelson Interferometer for Passive Atmospheric Sounding (MIPAS). Using Challenging Mini-Satellite Payload (CHAMP) radio occultation observations, McDonald et al. (2009) show that gravity waves increase the frequency of temperatures below T_{NAT} in June in the Antarctic, in particular around the Antarctic Peninsula, which is known as a mountain wave “hotspot”. Shibata et al. (2003) pointed out that non-orographic gravity waves generated by spontaneous adjustment which are related to synoptic-scale wave breaking also have an impact on the formation of ice particles. This result indicates that the impact of gravity waves is not restricted to above high mountains.

Several studies show the relationship between air parcel history and PSCs (e.g. Eckermann et al., 2009). However, Rex et al. (2004) showed a clear linear relationship between Arctic ozone depletion and PSC volume, defined as volumes where local temperature is below T_{NAT} . Rex et al. (2002) also showed that areas where temperatures are lower than T_{NAT} closely reproduce the heights and times for which PSC were observed by Polar Ozone Aerosol and Monitoring (POAM III) and a ground-based lidar in the Arctic. Pitts et al. (2007, 2009) confirmed that PSC estimations based on these temperature thresholds accord well with the observations by Cloud-Aerosol Lidar and Infrared Pathfinder Satellite Observations (CALIPSO) in both Antarctic and Arctic winters.

For a better understanding of stratospheric ozone destruction in association with PSCs, a quantitative analysis on the relationship between atmospheric waves and PSCs is needed. For this purpose, we examine four kinds of observation data: PSC data from CALIPSO, H_2O and HNO_3 data from a satellite microwave limb sounder (Aura MLS; EOS Microwave Limb Sounder on Aura spacecraft), reanalysis data

**Wave effects on
PSCs**M. Kohma and K. Sato

[Title Page](#)[Abstract](#)[Introduction](#)[Conclusions](#)[References](#)[Tables](#)[Figures](#)[◀](#)[▶](#)[◀](#)[▶](#)[Back](#)[Close](#)[Full Screen / Esc](#)[Printer-friendly Version](#)[Interactive Discussion](#)

(ERA-Interim; ECMWF Re-Analysis Interim) and high-resolution dry temperature data from GPS radio occultation observations (COSMIC/Formosat-3; Constellation Observing System for Meteorology Ionosphere and Climate). Although an analysis is made of the three winters of 2007, 2008 and 2009 in the Antarctic and of the two winter periods of 2007/2008 and 2008/2009 in the Arctic in this study, only the results for typical time periods of June through September 2008 in the Antarctic and of December 2007 through February 2008 in the Arctic are shown. The ozone hole area, defined as the region with total column ozone below 220 Dobson Units to the south of 40° S, in the austral winter of 2008 is largest among these three austral winters. PSCs are scarcely observed in the boreal winter of 2008/2009 because stratospheric warming occurred in January 2009.

A detailed description of the data used in this study can be found in Sect. 2. Characteristics of PSCs observed by CALIPSO satellite are described, and the validity of estimations of PSC amounts based on temperature thresholds are shown in Sect. 3. Section 4 shows the dynamical mechanism of low temperatures caused by atmospheric waves. The effects of atmospheric waves on PSC amounts in the Southern and Northern Hemispheres are quantitatively examined in Sects. 5 and 6, respectively. The summary and concluding remarks are given in Sect. 7.

2 Data description

2.1 CALIPSO data

CALIPSO's payload consists of the Cloud-Aerosol Lidar with Orthogonal Polarization (CALIOP), the Wide Field Camera (WFC) and the Imaging Infrared Radiometer (IIR). In this study, the CALIOP Level 2 Vertical Feature Mask (VFM) data product (version 3.01) is used to examine PSCs. CALIPSO is operated in a 98° inclination orbit and provides measurements extending to the highest latitude of 82°. CALIOP is suitable for the observation of PSCs because of its high vertical and horizontal resolutions and its

Wave effects on PSCs

M. Kohma and K. Sato

Title Page

Abstract

Introduction

Conclusions

References

Tables

Figures

◀

▶

◀

▶

Back

Close

Full Screen / Esc

Printer-friendly Version

Interactive Discussion



high sensitivity to optically thin clouds. The data product describes the vertical profiles of cloud and aerosol layers along the track of CALIPSO. Vertical (horizontal) resolutions are 60 m (1000 m) in the altitude range of 8.2–20.2 km and 180 m (1667 m) in the altitude range of 20.2–30.2 km. In this data product, cloud and aerosol layers are categorized into feature types. One type, “stratospheric”, includes the cloud and aerosol layers with bases above the tropopause, which is determined from static stability in the Global Modeling and Assimilation Office (GMAO) Goddard Earth Observing System Model Version 5 (GEOS-5) meteorological data set, following the definition of World Meteorology Organization. However, because there is usually a weak minimum in the temperature profile at around an altitude of 25 km in the polar night region in winter, determining tropopause from static stability is occasionally inaccurate. Thus, in some cases, PSCs are categorized as “clouds” in the troposphere. To avoid this problem, both “stratospheric” and “cloud” feature types above an altitude of 11 km are classified as PSCs in this study. So as to make the data size smaller, the CALIOP data, with an original vertical resolution of 60 m at altitudes of 8.2–20.2 km, are averaged every 180 m, making the same resolution as for 20.2–30.2 km.

CALIOP transmits laser light simultaneously at 532 nm and 1064 nm at a pulse radiation rate of 20.16 Hz, and measures the backscatter intensity at 1064 nm and two orthogonally polarized components at 532 nm. Although PSC type classification can be performed using these data (Noel et al., 2008; Pitts et al., 2009), this study mainly examines PSCs in terms of spatial and temporal variations.

2.2 ERA-Interim data

To analyze the temperature fields containing atmospheric waves with horizontal scales larger than synoptic-scales (about several-hundred km), ERA-Interim data are used. The horizontal resolution of the ERA-Interim data is $1.5^{\circ} \times 1.5^{\circ}$, and the temporal interval is 6 h. Daily-averaged data at 14 vertical levels between 300 hPa and 10 hPa are used in this study. Although the vertical grid points of ERA-Interim data are originally archived in terms of pressure, the data are linearly interpolated at a geopotential-height

interval of 100 m to make comparison with CALIPSO observations easier. Wind data are also used to calculate the potential vorticity on isentropic surfaces.

Figures 1a and 1b show the time-altitude sections of zonal-mean zonal wind \bar{U} and zonal-mean temperature \bar{T} averaged over a latitude region of 55° S–85° S for the time period May through October, 2008. In June through September, strong westerly winds ($>40 \text{ m s}^{-1}$) occur above 25 km. Temperature is quite low ($\sim 192 \text{ K}$) in the altitude range of 18–27 km in late June through August. In late August, the altitude region where \bar{T} is lower than 192 K gradually disappears. It is worth noting that a rapid rise in temperature ($\sim 2 \text{ K}$) is observed during 6–7 August. Figure 1c and d are the same as Fig. 1a and b but are averaged over the latitude range of 55° N–85° N from November 2007 through March 2008. Increasingly rapid temperature rises are observed with higher altitudes. In particular, after February 22, temperature rises extend down to altitudes of about 10 km, and zonal winds become easterly in the latitude range of 70° S–85° S.

2.3 COSMIC/Formosat-3 data

In order to analyze gravity waves, dry temperature data from GPS occultation measurements by COSMIC/Formosat-3 are used. The dry temperature profiles are calculated from observed refractivity under the assumption that water vapor pressure and electron density are negligible. According to Schreiner et al. (2007) and Shepherd and Tsuda (2008), the accuracy of dry temperature observations at the altitudes between 10 km and 30 km is better than 0.5 K. Although the nominal vertical resolution of the temperature profiles is about 0.1 km, the effective vertical resolution is about 1 km in the upper troposphere and stratosphere (Shepherd and Tsuda, 2008). Note that GPS radio occultation observations including COSMIC/Formosat-3 have been used in the data assimilation process for ERA-Interim since 2006. The bias between the two is less than 0.5 K, which is negligible for PSC analysis in this study.

Wave effects on PSCs

M. Kohma and K. Sato

Title Page

Abstract

Introduction

Conclusions

References

Tables

Figures

◀

▶

◀

▶

Back

Close

Full Screen / Esc

Printer-friendly Version

Interactive Discussion



2.4 Aura MLS data

In order to estimate the temperature thresholds for PSCs as accurate as possible, the observation data of HNO_3 and H_2O from MLS on the Aura satellite (version 2.2) are used. The along-track and vertical resolutions are respectively several-hundred km and several km in the lower stratosphere. As a part of the A-Train satellite constellation, Aura satellite and CALIPSO follow almost the same orbit. A temperature threshold for Type 1a PSC (T_{NAT} ; Hanson and Mauersberger, 1988) is estimated based on the MLS observations.

Following Carslaw et al. (1994), STS formation temperature (T_{STS}) is assumed to be 3.5 K below T_{NAT} . The ice frost point temperature (T_{ICE}) is calculated using the formulae derived by Marti and Mauersberger (1993). Previous studies show that ice particles are formed at temperatures which are 2–4 K lower than T_{ICE} (Tabazadeh et al. 1997; Koop et al. 1998). In this study, the temperature threshold for Type II PSCs ($T_{\text{ICE-}nu}$) is defined as the temperature that is 3 K below T_{ICE} . T_{STS} and $T_{\text{ICE-}nu}$ are derived at each grid point using the same methodology as for T_{NAT} . Note that T_{NAT} and T_{STS} are functions of the mixing ratios of HNO_3 and H_2O and atmospheric pressure, while $T_{\text{ICE-}nu}$ is a function of the H_2O mixing ratio and pressure.

In previous studies, the spatial and temporal variations of the mixing ratios of HNO_3 and/or H_2O have often been ignored (i.e., HNO_3 and/or H_2O is assumed to be constant) for calculating the temperature thresholds. However, uptake of HNO_3 and H_2O into PSC particles decreases the mixing ratios of HNO_3 and H_2O in the lower stratosphere, and consequently the temperature thresholds become lower in middle and late winter than in early winter. To include these variations in our quantitative analyses, the observed mixing ratios of HNO_3 and H_2O are averaged within $20^\circ \times 5^\circ$ longitude-latitude grid boxes and over one day at each level. They are further interpolated linearly into the same grids as those of the reanalysis data. Using these rearranged HNO_3 and H_2O data, T_{NAT} , T_{STS} and $T_{\text{ICE-}nu}$ are obtained at each grid point.

Wave effects on PSCs

M. Kohma and K. Sato

Title Page

Abstract

Introduction

Conclusions

References

Tables

Figures

◀

▶

◀

▶

Back

Close

Full Screen / Esc

Printer-friendly Version

Interactive Discussion



It is worth noting that lower mixing ratios of HNO_3 and H_2O caused by denitrification and dehydration are difficult to detect, and the values that are observed may not be accurate. In austral winter, in particular in July and August, there are negative values in the HNO_3 observation data around an altitude of 22 km (Santee et al., 2007). In calculation of temperature thresholds in the present study, these negative mixing ratios are not included.

3 PSC frequency observed by CALIPSO and estimates by temperature thresholds

The frequency of PSC occurrence F , hereinafter referred to as PSC frequency, is obtained using CALIPSO observation data for each day at vertical intervals of 1 km within $20^\circ \times 5^\circ$ longitude-latitude grid boxes. PSC frequency is defined as the ratio of the number of cases where PSCs were detected to the total number of observations. The total number of observations is usually about 160 for each grid box.

Figure 2 shows latitude-altitude sections of zonal-mean monthly-mean PSC frequency in the time period of June through September 2008. More than 99% of PSCs in the Southern Hemisphere are observed in the latitude and altitude region of 55°S – 85°S and 11–30 km. This region is the focus of the following analyses in the Southern Hemisphere, and therefore constitutes the major component of this paper.

Figure 3a shows a longitude-time section of PSC frequency averaged within the range of 65°S – 70°S and 18–20 km in the time period from June through September 2008. The altitude range of 18–20 km was chosen because PSCs are frequently observed there (see Fig. 2). Note that data during 3–11 June, 18–22 July, 8–10 and 26–30 September are missing. PSC frequency increases in June and decreases in September. Although it is clear that PSCs are observed in most longitudes, they appear most frequently in the longitude range 0° – 90°W in June and September, which is consistent with previous studies using CALIPSO observations (Pitts et al., 2007, McDonald et al., 2009). It is interesting to note that high F regions propagate eastward,

Wave effects on PSCs

M. Kohma and K. Sato

Title Page

Abstract

Introduction

Conclusions

References

Tables

Figures

◀

▶

◀

▶

Back

Close

Full Screen / Esc

Printer-friendly Version

Interactive Discussion



which accords well with the movement of low temperature anomalies. The propagation speeds of high F regions are concentrated around 20 m s^{-1} , as shown by a solid arrow in Fig. 3a. This is slower than the zonal-mean zonal wind (about 35 m s^{-1}) at this level (a dashed arrow). This fact suggests that the eastward propagation of high F regions is not simply due to advection of PSCs by background wind but due to modulation by atmospheric waves. Similar patterns of propagation and regional dependence for PSC frequency are also observed in the austral winters of 2007 and 2009 (not shown).

The most frequently-used proxy to estimate PSC areal extent is the area where $T \leq T_{\text{NAT}}$ (e.g., Rex et al., 1999, 2004). The T_{NAT} -based PSC frequency is calculated within $20^\circ \times 5^\circ$ longitude-latitude grid boxes at the altitude of 18–20 km for each day using temperature from ERA-Interim data and HNO_3 and H_2O mixing ratios from Aura MLS. The T_{NAT} -based PSC frequency for each grid box is defined as the ratio of the number of grid points with $T < T_{\text{NAT}}$ to the total number of grid points. Similarly, PSC frequencies are calculated also based on T_{STS} and $T_{\text{ICE- ν }}$.

Figure 3b–d show the longitude-time sections of PSC frequencies averaged for the latitude range of $65^\circ \text{ S} - 70^\circ \text{ S}$ and 18–20 km based on T_{NAT} , T_{STS} , and $T_{\text{ICE- ν }}$, respectively. It is clear that T_{STS} -based PSC frequency estimates accord best among the three with observations by CALIPSO (Fig. 3a) in terms of magnitudes of PSC frequency and eastward propagation speeds. On the other hand, the T_{NAT} -based estimates are much larger than observations. Reflecting the fact that $T_{\text{ICE- ν }}$ values are usually below those of T_{STS} and T_{NAT} , $T_{\text{ICE- ν }}$ -based estimates are smaller than the T_{STS} -based estimates. It is worth noting that while T_{STS} -based PSC frequencies greater than 10 % are observed in regions where $T < 194 \text{ K}$ in June, they are also observed in regions where $T < 192 \text{ K}$ in late August. This is likely because T_{STS} decreases due to a reduction in HNO_3 and H_2O mixing ratios from their uptake into PSC particles.

Figure 4 shows results for a higher latitude range of $75^\circ \text{ S} - 80^\circ \text{ S}$. PSC frequency observed by CALIPSO is higher at higher latitudes. However, T_{STS} -based estimates do not match the observations, in particular, in low temperature ($T < 184 \text{ K}$) regions in July and August. It is likely that severe denitrification and dehydration during this time period

**Wave effects on
PSCs**

M. Kohma and K. Sato

Title Page

Abstract

Introduction

Conclusions

References

Tables

Figures

◀

▶

◀

▶

Back

Close

Full Screen / Esc

Printer-friendly Version

Interactive Discussion



Wave effects on PSCs

M. Kohma and K. Sato

Title Page

Abstract

Introduction

Conclusions

References

Tables

Figures

◀

▶

◀

▶

Back

Close

Full Screen / Esc

Printer-friendly Version

Interactive Discussion



cause extremely large reductions of HNO_3 and H_2O mixing ratios, meaning they are too small to be detected by MLS measurements. In addition, as Pitts et al. (2007) point out, the temperature thresholds T_{NAT} , T_{STS} and T_{ICE} will be underestimated if they are not calculated using “total” HNO_3 and H_2O mixing ratios, i.e., gas phase mixing ratios plus those of HNO_3 and H_2O which have been taken up into the PSC particles. Thus, the values of T_{STS} can be underestimated in regions where PSC amounts are large. Another possible explanation for the difference between observations and T_{STS} -based estimates is that the CALIPSO observations underestimate PSC areal extent because optically thin PSCs may not be detectable by CALIOP (Pitts et al., 2007).

Based on the above results, it is inferred that the T_{STS} -based PSC frequency estimates are more reliable at low latitudes ($<70^\circ\text{S}$) in the Antarctic. Thus, in the following sections, our analysis will focus on PSCs mainly in the lower latitudes using T_{STS} -based PSC frequency estimates. It should also be emphasized that PSCs in lower latitudes are more important to ozone depletion because of the earlier arrival of solar radiation in spring. In addition, even at latitudes higher than 70°S , temperatures at altitudes of 12–15 km are not low enough to cause strong denitrification and dehydration. Thus, T_{STS} -based estimates become accurate at latitudes higher than 70°S and between 12 and 15 km.

4 Temperature fluctuation caused by atmospheric waves in the lower stratosphere

4.1 Planetary and synoptic-scale waves

As shown in Sect. 3, the eastward propagation of high-PSC-frequency regions accords well with low temperature anomalies which are likely associated with atmospheric waves. In this section, we discuss how planetary and synoptic-scale waves cause low temperature anomalies. These waves are essentially the fluctuations of potential

vorticity (PV), defined as follows:

$$PV = \frac{\zeta + f}{\sigma},$$

where $\sigma^{-1} = -g \frac{\partial \theta}{\partial p}$ is thickness, ζ is relative vorticity, f is planetary vorticity, θ is potential temperature and g is gravity acceleration. Potential vorticities on the 300 K (500 K) isentropic surface, corresponding to an altitude of about 8 km (20 km), in the polar winter are analyzed to examine the behaviors of synoptic-scale waves (planetary waves). According to Charney and Drazin's theorem (1961), atmospheric waves with zonal wavenumbers (s) higher than 3 cannot propagate vertically in the stratosphere in usual winter conditions. Thus, planetary waves are dominant around the polar vortex in winter. Teitelbaum and Sadourny (1998) showed that planetary waves are important for PSC formation due to their strong uplift of isentropic surfaces. In addition, Teitelbaum et al. (2001) showed that synoptic-scale waves near the tropopause can affect PSC occurrence in the lower stratosphere in both hemispheres. In this study, planetary waves are defined as disturbances with $s = 1-3$ components and synoptic-scale waves as $s = 4-20$ components. V is conserved following the motion on the isentropic surface when mechanical forcing and adiabatic heating are negligible. The unperturbed PV isolines are usually oriented zonally around the stratospheric polar vortex. The temperature inside (outside) the polar vortex is low (high) mainly due to differential solar radiative heating. Thus, the anticyclonic PV anomaly (positive anomaly in the Southern Hemisphere) of planetary waves is associated with poleward advection of warm air originating from lower latitudes, and vice versa (Fig. 5b). As a result, PV and temperature anomalies are positively correlated in the middle stratosphere of the Southern Hemisphere, where planetary waves are dominant.

Figure 6a shows a scatter diagram of $s = 4-20$ potential vorticity components on the 300 K isentropic surface (~ 8 km) around the tropopause and $s = 4-20$ temperature components at 100 hPa (~ 15 km) in the lower stratosphere for the latitude range of $65^\circ \text{S}-70^\circ \text{S}$ in July. PV and temperature components are negatively correlated. The relationship is understandable as follows. The synoptic-scale baroclinic waves usually

Wave effects on PSCs

M. Kohma and K. Sato

Title Page

Abstract

Introduction

Conclusions

References

Tables

Figures

◀

▶

◀

▶

Back

Close

Full Screen / Esc

Printer-friendly Version

Interactive Discussion



**Wave effects on
PSCs**

M. Kohma and K. Sato

[Title Page](#)[Abstract](#)[Introduction](#)[Conclusions](#)[References](#)[Tables](#)[Figures](#)[◀](#)[▶](#)[◀](#)[▶](#)[Back](#)[Close](#)[Full Screen / Esc](#)[Printer-friendly Version](#)[Interactive Discussion](#)

have two PV anomalies near the tropopause and the ground surface. The temperature anomalies associated with the PV anomalies near the tropopause are illustrated in Fig. 6b. When the anticyclonic PV anomaly (positive anomaly in the Southern Hemisphere) is located near the tropopause, isobars around the anomaly are lifted up as shown by green curves in Fig. 6b. Thus, the thickness above the tropopause becomes thinner, while the thickness below becomes thicker. Because thickness is proportional to the mean temperature in the layer, the temperature anomaly is negative above the anticyclonic PV anomaly and positive below. Similarly the cyclonic PV anomaly (negative anomaly in the Southern Hemisphere) causes the positive temperature anomaly to have an opposite sign to the anticyclonic PV anomaly. Thus, PSCs in the lowermost stratosphere are associated with anticyclonic PV anomalies located near the tropopause, as seen in Fig. 6a.

Figure 6c shows a composite of $s = 4$ – 20 temperature components in a longitude-pressure section for July 2008. The reference points are determined where $s = 4$ – 20 isentropic potential vorticity components are positively maximized in the zonal direction at 65° S at $\theta = 300$ K, and with their maximum value larger than 2.5 PVU. The number of cases used for the composite is 21. The vertical structure of the temperature anomaly is similar to the schematic illustration shown in Fig. 6b. The amplitude of the temperature anomaly at 100 hPa is 1 K, which is consistent with the range of the scatter diagram shown in Fig. 6a. It is worth noting that the vertical structure in the stratosphere is almost barotropic, while eastward tilt is seen in the troposphere, which is consistent with baroclinic waves.

4.2 Gravity waves

As ERA-Interim data do not have sufficient resolution for the study of gravity waves, dry temperature data from COSMIC/Formosat-3 observations are used. In this study, gravity waves are defined as the components whose vertical wavelengths are shorter than 6 km. An analysis is made of the vertical profiles in a restricted height range of 12–30 km, where PSCs are frequently observed. Note that this restriction is effective

to avoid mixing spurious temperature fluctuations due to the tropopause structure into gravity waves. However, this process may cause underestimation of the amplitude of gravity waves near the edge of the vertical profile. It is also important to note that the horizontal resolution of the COSMIC data is about 300–400 km in the polar region, which means that only gravity waves having horizontal wavelengths longer than 600–800 km can be estimated. Thus, the results shown by this study give the lower limit of the gravity wave effects on PSCs.

Figure 7a shows profiles of original dry temperature and smoothed dry temperature with a lowpass filter with a cutoff length of 6 km in the vertical at 82.8° W, 80.3° S on 29 August 2008. Temperature fluctuations with amplitudes of about 5 K are observed above 12 km. Figure 7b shows feature type along a CALIPSO orbit on the same day. A green rectangle indicates the region of the temperature profile shown in Fig. 7a. It is clear from Fig. 7a and b that PSCs are observed at altitudes of 13–16 km and 18–21 km, where temperature is minimized due to gravity waves.

5 The effects of atmospheric waves on PSCs in the Antarctic winter of 2008

In this section, the effects of planetary waves, synoptic-scale waves and gravity waves on PSC areal extent are quantitatively examined using T_{STS} -based estimates of PSCs. First of all, the reliability of T_{STS} -based PSC areal extent estimates is confirmed by comparing the estimates with PSC areal extent calculated using CALIPSO observations in the latitude range of 55° S–70° S, in which T_{STS} -based PSC frequency accords well with observations, as shown in Sect. 3. To calculate CALIPSO-based PSC areal extent, firstly, PSC frequency is obtained as in the previous section but for every 1 km vertical grid point. Then, PSC areal extent for each grid box is determined as PSC frequency in the grid box multiplied by the box area. Figure 8a shows a time-altitude section of CALIPSO-based PSC areal extent for 55° S–70° S. As shown in Pitts et al. (2007, 2009), PSCs are dominant in the altitude region of about 20–25 km in early June, and down to 12 km in late June. In late August and September, PSCs gradually disappear

Wave effects on PSCs

M. Kohma and K. Sato

Title Page

Abstract

Introduction

Conclusions

References

Tables

Figures

◀

▶

◀

▶

Back

Close

Full Screen / Esc

Printer-friendly Version

Interactive Discussion



above 20 km, and PSC areal extent becomes smaller. The decrease in PSC areal extent is observed at altitudes of 20–24 km during 6–8 August. It is likely that this decrease is related to an increase in zonal-mean temperature in spring (see Fig. 1b).

T_{STS} -based PSC areal extent is calculated in the same way as CALIPSO-based PSC areal extent. Figure 8b shows a time-altitude section of T_{STS} -based PSC areal extent. It is clear that the T_{STS} -based estimates, in particular, timings and altitudes of T_{STS} -based PSC areal extent maxima (vertical broken lines in Fig. 8), accord well with the observations.

To estimate the effects of planetary waves, synoptic-scale waves and gravity waves, PSC areal extents with and without the respective waves are compared. The effects of the respective waves are quantified in terms of PSC coverage ratio $R(z, t)$, defined as the summation of PSC areal extent over all longitudes in the latitude range of 55° S–70° S normalized by the analyzed area. In other words, $R(z, t)$ corresponds to the zonal and latitudinal mean of PSC frequency weighted by length of latitude circle. The method of analysis is shown in Fig. 9. PSC coverage ratio with planetary waves is calculated using $s = 0$ –3 components of ERA-Interim temperature, Aura MLS HNO_3 and H_2O mixing ratios (Fig. 9b). The unperturbed PSC coverage ratio is calculated using zonal-mean (i.e., $s = 0$) temperature, HNO_3 and H_2O data (Fig. 9a). Then, the difference between the two PSC coverage ratios ΔR_{PW} , is obtained as the effect of planetary waves. A positive ΔR_{PW} value means that planetary waves increase $R(z, t)$, and vice versa.

Similar analyses are conducted to obtain ΔR_{SW} and ΔR_{GW} for synoptic-scale waves ($s = 4$ –20) and gravity waves (vertical wavelength <6 km), respectively. For calculations of PSC coverage ratios with and without gravity waves, unfiltered HNO_3 and H_2O mixing ratios are used because the original vertical resolutions of HNO_3 and H_2O data are not as high as that of COSMIC temperature data.

Figures 10a-c show time-altitude sections of 5-day-running means for ΔR_{PW} , ΔR_{SW} and ΔR_{GW} . Red (blue) areas indicate an increase (decrease) in PSC coverage ratios. Contours show the variance of temperature fluctuations associated with the respective

Wave effects on PSCs

M. Kohma and K. Sato

Title Page

Abstract

Introduction

Conclusions

References

Tables

Figures

◀

▶

◀

▶

Back

Close

Full Screen / Esc

Printer-friendly Version

Interactive Discussion



Wave effects on PSCs

M. Kohma and K. Sato

Title Page

Abstract

Introduction

Conclusions

References

Tables

Figures

◀

▶

◀

▶

Back

Close

Full Screen / Esc

Printer-friendly Version

Interactive Discussion



waves. The variance of temperature fluctuations associated with planetary waves is large at altitudes of 13–25 km in early July and early August. In September, the variance becomes larger, having its peak around an altitude of 28 km. ΔR_{PW} is about +5 % on average at altitudes of 16–25 km in the time period of mid-June through September. Synoptic-scale waves have large temperature fluctuations around 11 km in June through September. ΔR_{SW} is about +1 % on average at around 12 km. Positive ΔR_{SW} values are seen at altitudes of 16–25 km in spite of little temperature variance from synoptic-scale waves there.

The temperature variance of gravity waves increases at heights above 16 km and has a maximum at around 14 km, which is consistent with Yoshiki et al. (2004). ΔR_{GW} is positive at altitudes of 13–16 km and negative at altitudes of 22–25 km. However, the effect is small compared with those of planetary and synoptic-scale waves.

Next, the relative contributions of the respective waves to total T_{STS} -based PSC areal extent R_{ALL} (s = all wavenumbers) are examined for the latitude range of 55° S–70° S. R_{ALL} is calculated based on unfiltered temperature and mixing ratios of HNO₃ and H₂O. The latitude range of 55° S–70° S is chosen because PSCs there play a significant role in ozone destruction chemistry. Figure. 11a–c show time series of ΔR_{PW} , ΔR_{SW} , ΔR_{GW} and R_{ALL} at altitudes of 16–20 km, 15 km and 12 km for 55° S–70° S. These altitude ranges are analyzed because the changes in R due to the respective waves are large, as seen in Fig. 10. ΔR_{PW} accords with R_{ALL} , indicating that the contribution of planetary waves is dominant at altitudes of 16–20 km, except for 8–27 July. The small ΔR_{PW} (<4 %) during 8–27 July is most likely due to the small planetary wave amplitudes (see Fig. 10a). This feature suggests that zonal-mean temperature is lower than T_{STS} during this time period compared with other time periods.

At 12 km, ΔR_{SW} is larger than ΔR_{PW} , indicating that the effects of synoptic-scale waves are dominant. The ratio of ΔR_{SW} to R_{ALL} , i.e., contribution of synoptic-scale waves at 12 km is more than 60 % on average. At an altitude of 15 km, where the effects of gravity waves are large (Fig. 10c), ΔR_{GW} is comparable to ΔR_{SW} but negligible compared with ΔR_{PW} , suggesting that gravity waves have little impact on PSC

coverage ratio. The ratio of ΔR_{GW} to R_{ALL} , i.e., contribution of gravity waves, is near its largest value of 0.5 % in late August and September.

Figure 12a–c show latitude-altitude sections of the zonal-mean monthly-mean temperature in July, August and September, respectively. Figure 12d–f show the same as Fig. 12a–c but for the difference ΔF between T_{STS} -based PSC frequencies F with and without planetary waves in July in each grid box (Fig. 12d), synoptic-scale waves in August (Fig. 12e) and gravity waves in September (Fig. 12f), respectively. These time periods are chosen because the changes of PSC areal extent due to the respective waves are large in Fig. 10. Contour lines indicate the temperature variance associated with the respective waves. In July, ΔF due to planetary waves are positive to the north of 70°S in an altitude range of 15–23 km and negative at higher latitudes in the same altitude range. This is probably reflecting the fact that zonal-mean temperature is lower (higher) than T_{STS} to the south (north) of 70°S . The negative ΔF at the higher latitudes is not meaningful because T_{STS} -based PSC frequency estimates are not accurate there, as is described in Sect. 3 (See Fig. 4).

Figure 12b shows that the variance of synoptic-scale waves is maximized around an altitude of 12 km in August and that ΔF due to synoptic-scale waves is positive there. Another interesting feature is that ΔF is significantly positive at altitudes of 14–20 km for the latitude range of 50°S – 70°S , even though the temperature variance is almost zero at latitudes higher than 70°S and above 15 km. This feature is observed also in the other months. It would be interesting to analyze how synoptic-scale waves affect PSC amounts at these altitudes, where planetary wave effects are dominant, but this is beyond the scope of the present paper.

In Fig. 12c, temperature variance due to gravity waves observed in a wide latitude range of 55°S – 85°S are similar to those of Fig. 10c. A Positive ΔF due to gravity waves around an altitude of 15 km is more significant at latitudes higher than 65°S in September. Figure 11d shows time series of ΔR_{GW} and R_{ALL} at an altitude of 15 km in the latitude range of 70°S – 85°S . The contribution of gravity waves to R_{ALL} ($\Delta R_{\text{GW}}/R_{\text{ALL}}$) amounts to about 30 % on average in September.

Wave effects on PSCs

M. Kohma and K. Sato

Title Page

Abstract

Introduction

Conclusions

References

Tables

Figures

◀

▶

◀

▶

Back

Close

Full Screen / Esc

Printer-friendly Version

Interactive Discussion



Wave effects on PSCs

M. Kohma and K. Sato

Title Page

Abstract

Introduction

Conclusions

References

Tables

Figures

◀

▶

◀

▶

Back

Close

Full Screen / Esc

Printer-friendly Version

Interactive Discussion



Figure 13 shows polar stereo projection maps of the monthly-mean ΔF due to the respective waves. The altitudes and months shown in each panel are chosen because they have the highest magnitudes of ΔF for each wave in Fig. 10: $z = 16\text{--}20$ km in July for planetary waves (Fig. 13a), $z = 12$ km in August for synoptic-scale waves (Fig. 13b) and $z = 15$ km in September for gravity waves (Fig. 13c). Planetary waves act to increase PSC frequency to the north of 70°S and decrease PSC frequency to the south of 70°S .

In the austral winter, propagating planetary waves are dominant around the polar vortex. These planetary waves are accompanied by temperature fluctuations, as is illustrated in Fig. 5. It is likely that the warm temperature advection at the higher latitudes and cold advection at the lower latitudes cause the annular-like structure of ΔF , as can be observed in Fig. 13a.

In Fig. 13b, ΔF due to synoptic-scale waves is mostly positive at lower latitudes and negative at higher latitudes, even though a horizontal pattern of zonal wavenumber 4 is observed. The wavy pattern is probably due to synoptic-scale waves being temporally amplified in January.

Gravity waves increase PSC frequency at altitudes of 11–15 km, in particular over the Transantarctic Mountains and downstream of the Antarctic Peninsula (Fig. 13c).

6 The effects of atmospheric waves on PSCs in the Arctic winter of 2007/2008

PSCs appear less frequently in the Arctic than in the Antarctic. Figure 14 shows longitude-time sections of PSC frequency observed by CALIPSO and the T_{STS} -based PSC frequency for the latitude range of $65^\circ\text{N}\text{--}70^\circ\text{N}$ in December 2007 through February 2008. Note that data during 28–31 December and 17 January are missing. The T_{STS} -based estimates accord well with CALIPSO observations in Fig. 14, although they are a little larger. Unlike the Southern Hemisphere estimates, the T_{STS} -based estimates are consistent with observations even at higher latitudes ($>70^\circ\text{N}$), which is likely due to the weak denitrification and dehydration in the Northern Hemisphere. Compared with

**Wave effects on
PSCs**

M. Kohma and K. Sato

Title Page

Abstract

Introduction

Conclusions

References

Tables

Figures

◀

▶

◀

▶

Back

Close

Full Screen / Esc

Printer-friendly Version

Interactive Discussion



the Southern Hemisphere, PSCs are observed less frequently in the Northern Hemisphere, and they are restricted to the longitudes between 0° and 90° E. This is probably because the winter stratosphere is generally warmer in the Arctic than in the Antarctic. Also, the center of the polar vortex shifts to Europe due to stationary planetary waves. Interannual variation of PSCs is larger in the Northern Hemisphere, reflecting strong planetary wave activity. For example, PSC frequency was low in the winter of 2008/2009 when a stratospheric major warming occurred (not shown).

Figure 15a and b show time-altitude sections of observed and T_{STS} -based PSC areal extents in the Northern Hemisphere, respectively. The observed PSC areal extent in the Northern Hemisphere is about half of that in the Southern Hemisphere. In addition, the vertical extent of PSCs is smaller in the Northern Hemisphere. PSCs are sparse below 16 km.

The T_{STS} -based PSC areal extent is about twice as large as the observations at altitudes of 16–25 km during the winter. However, the timings and altitudes where PSC areal extent is maximized are consistent with the CALIPSO observations. To examine the effects of atmospheric waves, in the Northern Hemisphere, T_{STS} -based PSC frequency estimates are used, as they were used for the Southern Hemisphere in Sect. 5.

Figure 15c–e show time-altitude sections of 5-day-running means for ΔR_{PW} , ΔR_{SW} and ΔR_{GW} (colors) and temperature variance (contours) in the latitude range of 55° N– 85° N in December 2007 through February 2008. Note that the analyzed latitude range in the Northern Hemisphere is larger than that in the Southern Hemisphere, which covers almost the whole area where PSCs are observed, except near the North Pole.

As is seen in Fig. 15c, the temperature variance of planetary waves is much larger in the Northern Hemisphere than in the Southern Hemisphere at altitudes above 12 km. Values of ΔR_{PW} are about 10 % on average at altitudes of 18–27 km in the time period of mid-December through early February. In particular, ΔR_{PW} is largely positive when and where planetary waves have large amplitudes.

Wave effects on PSCs

M. Kohma and K. Sato

Title Page

Abstract

Introduction

Conclusions

References

Tables

Figures

◀

▶

◀

▶

Back

Close

Full Screen / Esc

Printer-friendly Version

Interactive Discussion



Figure 15d shows that the variances of temperature fluctuations associated with synoptic-scale waves are large around 11 km during the winter and above 24 km during 20–30 January. Negative values of ΔR_{SW} are observed at altitudes of 16–24 km in January through mid-February, even though the variance of temperature fluctuations associated with synoptic-scale waves is not necessarily large (e.g., 5–20 January). On the other hand, the increase in PSC areal extent in the lowermost stratosphere, as is clearly seen in the Southern Hemisphere, is not so obvious in the Northern Hemisphere (see Fig. 10b). The negative ΔR_{SW} in 16–24 km may not be due to synoptic-scale waves but the synoptic-scale structure of the distribution of HNO_3 and/or H_2O mixing ratios caused by inhomogeneous denitrification and dehydration.

Above 16 km, temperature variances of gravity waves peak at around 15 km, and above 16 km, they increase with height (Fig. 15e), which is similar to the Southern Hemisphere. ΔR_{GW} is generally quite small but is slightly negative at altitudes of 16–24 km in the time period of 5–25 January.

The relative contributions of the respective waves to the total T_{STS} -based PSC areal extent R_{ALL} are examined. Figure 16 shows time series of ΔR_{PW} , ΔR_{SW} , ΔR_{GW} and R_{ALL} for the latitude range of 55°N – 85°N at 22 km, where PSCs were most frequently observed in the winter of 2007/2008. The contribution of planetary waves to R_{ALL} is dominant during winter, while those of synoptic-scale waves and gravity waves are small. It is interesting to note that ΔR_{PW} exceeds R_{ALL} in mid-January, and that the excess is cancelled by ΔR_{SW} . It is worth noting that the results displayed in Fig. 16 are for the latitude range of 55°N – 85°N , while those in Fig. 11 are only for the lower latitude range of 55°S – 70°S . Although the contribution of zonal-mean fields to PSC formation is important at higher latitudes in the Southern Hemisphere, most PSCs in the Northern Hemisphere are caused by planetary waves, so the contribution of zonal-mean fields is quite small.

Figure 17 shows polar stereo projection maps of monthly-mean ΔF due to planetary waves in January at 22 km. ΔF due to planetary waves is positive in the longitude range of 30°W – 120°E . In the Arctic stratosphere, stationary planetary waves are dominant,

usually shifting the center of the polar vortex to Europe. Thus, the region where $T \leq T_{\text{STS}}$ is restricted to the longitude range of about $30^\circ \text{W} - 90^\circ \text{E}$.

7 Summary and concluding remarks

The effects of atmospheric waves on the amounts of PSCs in both hemispheres have been examined using observation data from the three satellites CALIPSO, COSMIC and Aura MLS and reanalysis data.

PSC frequency is calculated using CALIPSO VFM data in the Southern Hemisphere in the winter of 2008. A Hovmöller diagram indicates that the high PSC frequency regions propagate eastward at speeds that are much different from the background zonal wind, suggesting significant modulation due to atmospheric waves.

Next, PSC frequency is estimated based on three kinds of temperature thresholds and compared with CALIPSO observations. For the estimations, temporal and spatial variations of HNO_3 and H_2O mixing ratios observed by MLS are used. The history of air-parcels, such as advection of the existing particles, is ignored. Although T_{STS} -based PSC frequency accords well with the observations in the latitude ranges of $55^\circ \text{S} - 70^\circ \text{S}$ and $55^\circ \text{N} - 85^\circ \text{N}$, the estimation is not consistent with observations in the regions to the south of 70°S , in particular in midwinter. This inconsistency at the higher latitudes in the Southern Hemisphere is likely due to extremely low mixing ratios of HNO_3 and/or H_2O . However, the T_{ICE} -based PSC frequency is consistent with the observations at higher latitudes. This result for the Southern Hemisphere suggests that PSCs mainly consist of STS at lower latitudes, while water ice is dominant at higher latitudes, which is consistent with previous observational study (e.g., Höpner et al., 2006).

The relationships between temperature fluctuations and planetary waves in the middle stratosphere and with synoptic-scale waves near the tropopause are then examined. It is shown by a scatter diagram analysis that planetary-scale cyclones are accompanied with negative temperature anomalies with amplitudes of about 10 K at 65°S and at around 20 km. In contrast, synoptic-scale anticyclones with potential vorticity

Wave effects on PSCs

M. Kohma and K. Sato

Title Page

Abstract

Introduction

Conclusions

References

Tables

Figures

◀

▶

◀

▶

Back

Close

Full Screen / Esc

Printer-friendly Version

Interactive Discussion



anomalies near the tropopause are accompanied with negative temperature fluctuations with amplitudes of about 1 K at 65° S and 10–15 km. These results suggest that planetary waves have a great impact on the spatial distribution of PSCs in the middle stratosphere, and synoptic-scale waves have a great impact at around 12 km, which is consistent with previous case studies by Teitelbaum and Sadourny (1998) and Teitelbaum et al. (2001).

The effects of gravity waves are examined using COSMIC/Formosat-3 data. Gravity wave components are defined as fluctuations with vertical wavelengths shorter than 6 km. It is confirmed that low temperatures due to gravity waves accord with PSCs observed by CALIPSO.

Following this, the effects of three kinds of atmospheric waves (planetary, synoptic-scale and gravity waves) on PSC areal extents are examined by analyzing the change in the T_{STS} -based PSC coverage ratio due to the respective waves for a latitude region of 55° S–70° S. It is shown that at 16–22 km, planetary waves increase the PSC coverage ratio by about 5% on average in the examined latitude range in mid-June through September, which is almost the same as total PSC coverage ratio. In other words, PSCs in this area are mainly caused by planetary waves during winter. This is likely due to the fact that zonal-mean temperature is usually higher than T_{STS} at lower latitudes (55° S–70° S) and that the most significant cause of low temperature ($<T_{STS}$) is modulation due to the propagating planetary waves along the polar night jet situated at about 60° S in the Antarctic stratosphere. The temperature fluctuations associated with synoptic-scale waves are dominant at around 12 km in winter. The change in PSC coverage ratio ΔR is about +1% at around 12 km, which means that the relative contribution of synoptic-scale waves to the total PSC coverage ratio at 12 km is more than 60%. It is also shown that the gravity wave effects are significant at around 15 km at latitudes higher than 70° S, in particular in September ($\Delta R \sim 3\%$; relative contribution to total of $\sim 30\%$), although they are negligible ($\Delta R \sim 0.1\%$; relative contribution of $\sim 1\%$) at lower latitudes (55° S–70° S).

Wave effects on PSCs

M. Kohma and K. Sato

[Title Page](#)[Abstract](#)[Introduction](#)[Conclusions](#)[References](#)[Tables](#)[Figures](#)[I◀](#)[▶I](#)[◀](#)[▶](#)[Back](#)[Close](#)[Full Screen / Esc](#)[Printer-friendly Version](#)[Interactive Discussion](#)

**Wave effects on
PSCs**

M. Kohma and K. Sato

Title Page

Abstract

Introduction

Conclusions

References

Tables

Figures

◀

▶

◀

▶

Back

Close

Full Screen / Esc

Printer-friendly Version

Interactive Discussion



Similar analyses are performed for the Northern Hemisphere winter in 2007/2008, where PSC regions are significantly limited. The T_{STS} -based estimates of PSC areal extent accord well with observations in most latitudes of 55°N – 85°N in terms of temporal variation. However, the T_{STS} -based PSC areal extent is about twice as large as observations at 16–25 km during winter.

Stationary planetary waves are dominant in the Arctic stratosphere and strongly affect PSC areal extents. Their relative contribution to the total PSC coverage ratio is close to 100 % at most altitudes during the winter. Synoptic-scale waves and gravity waves act to decrease PSC coverage area, although their effects are very weak.

Several studies have examined the relationship between ozone depletion and PSC areal extent and volume (areal extent times the altitude range) based on T_{NAT} in the Northern Hemisphere (e.g. Rex et al., 1999, 2004). The results in this study suggest that T_{NAT} -based PSC areal extent may be overestimated because T_{STS} is lower than T_{NAT} , which is consistent with Pitts et al. (2007).

Several previous studies have emphasized the importance of synoptic-scale waves near the tropopause and gravity waves in the Northern Hemisphere. For example, Teitelbaum et al. (2001) indicated the importance of uplifts of isentropic surface due to synoptic-scale anticyclonic potential vorticity anomalies near the tropopause. However, due to the small latitude circles in the polar region, the uplifts of isentropic surface analyzed by Teitelbaum et al. (2001) may have had larger spatial scales than those analyzed as synoptic-scale ($s = 4$ – 20) waves in the present study. Thus, it is possible that the effects of synoptic-scale waves as analyzed by Teitelbaum et al. (2001) are included in ΔR_{PW} of the present study. For a more detailed evaluation of the effects of atmospheric waves on PSCs, the history of air parcels would need to be considered. Several studies (e.g., Eckermann et al. 2009) have shown that water ice formed at low temperatures in association with gravity waves helps NAT formation. In this study, gravity waves with horizontal wavelengths shorter than about 600 km were not detected in COSMIC observations, although gravity waves with much shorter horizontal wavelengths do exist. Thus, it is possible that our study underestimates the effects

of gravity waves on PSC areal extent. Therefore, a further analysis of the effects of gravity waves on PSCs using data from higher resolution observations and numerical models is needed.

Acknowledgements. We thank H. Nakamura and M. Koike for their many useful comments and discussions. We appreciate constructive and useful comments from D. Wu at NASA Jet Propulsion Laboratory and S. T. Massia at National Center for Atmospheric Research about CALIPSO data and Aura MLS data. We are also indebted to Y. Tomikawa at the National Institute of Polar Research for his kindly providing decoded ERA-Interim data. The figures were drawn by the software tools developed under the GFD Dennou Club Davis project. The CALIPSO data product is available at NASA Langley Atmospheric Science Data Center (<http://eosweb.larc.nasa.gov/>). The Aura MLS data product is available at NASA Goddard Earth Sciences Data and Information Service Center (GES-DISC; <http://disc.gsfc.nasa.gov>). This manuscript was proofread by a proofreading/editing assistant from the Global COE program, *From the Earth to Earth*.

References

- Adhikari, L., Wang, Z., and Liu, D.: Microphysical properties of Antarctic polar stratospheric clouds and their dependence on tropospheric cloud systems, *J. Geophys. Res.*, 115, D00H18, doi:10.1029/2009JD012125, 2010.
- Carlaw, K. S., Luo, B. P., Clegg, S. L., Peter, T., Brimblecombe, P., and Crutzen, P. J.: Stratospheric Aerosol Growth and HNO₃ Gas-Phase Depletion from Coupled HNO₃ and Water-Uptake by Liquid Particles, *Geophys. Res. Lett.*, 21, 2479–2482, doi:10.1029/94GL02799, 1994.
- Carlaw, K. S., Wirth, M., Tsias, A., Luo, B. P., Dörnbrack, A., Leutbecher, M., Volkert, H., Renger, W., Bacmeister, J. T., Reimer, E., and Peter, T.: Increased stratospheric ozone depletion due to mountain-induced atmospheric waves, *Nature*, 391, 675–678, doi:10.1038/35589, 1998.
- Carlaw, K. S., Peter, T., Bacmeister, J. T., and Eckermann, S. D.: Widespread solid particle formation by mountain waves in the Arctic stratosphere, *J. Geophys. Res.*, 104, 1827–1836, doi:10.1029/1998JD100033, 1999.

Wave effects on PSCs

M. Kohma and K. Sato

Title Page

Abstract

Introduction

Conclusions

References

Tables

Figures

◀

▶

◀

▶

Back

Close

Full Screen / Esc

Printer-friendly Version

Interactive Discussion



- Charney, J. G. and Drazin, P. G.: Propagation of Planetary-Scale Disturbances from the Lower into the Upper Atmosphere, *J. Geophys. Res.*, 66, 83–109, doi:10.1029/JZ066i001p00083, 1961.
- Eckermann, S. D., Hoffmann, L., Höpfner, M., Wu, D. L., and Alexander, M. J.: Antarctic NAT PSC belt of June 2003: Observational validation of the mountain wave seeding hypothesis, *Geophys. Res. Lett.*, 36, L02807, doi:10.1029/2008GL036629, 2009.
- Fahey, D. W., Gao, R. S., Carslaw, K. S., Kettleborough, J., Popp, P. J., Northway, M. J., Holecek, J. C., Ciciora, S. C., McLaughlin, R. J., Thompson, T. L., Winkler, R. H., Baumgardner, D. G., Gandrud, B., Wennberg, P. O., Dhaniyala, S., McKinney, K., Peter, T., Salawitch, R. J., Bui, T. P., Elkins, J. W., Webster, C. R., Atlas, E. L., Jost, H., Wilson, J. C., Herman, R. L., Kleinböhl, A., and von König, M.: The detection of large HNO₃-containing particles in the winter Arctic stratosphere, *Science*, 291, 1026–1031, 2001.
- Fueglistaler, S., Luo, B. P., Voigt, C., Carslaw, K. S., and Peter, T.: NAT-rock formation by mother clouds: a microphysical model study, *Atmos. Chem. Phys.*, 2, 93–98, doi:10.5194/acp-2-93-2002, 2002.
- Hanson, D. and Mauersberger, K.: Solubility and equilibrium vapor-pressures of HCl Dissolved in Polar Stratospheric Cloud Materials – Ice and the Trihydrate of Nitric-Acid, *Geophys. Res. Lett.*, 15, 1507–1510, doi:10.1029/GL015i013p01507, 1988.
- Höpfner, M., Larsen, N., Spang, R., Luo, B. P., Ma, J., Svendsen, S. H., Eckermann, S. D., Knudsen, B., Massoli, P., Cairo, F., Stiller, G., Von Clarmann, T., and Fischer, H.: MIPAS detects Antarctic stratospheric belt of NAT PSCs caused by mountain waves, *Atmos. Chem. Phys.*, 6, 1221–1230, doi:10.5194/acp-6-1221-2006, 2006.
- Höpfner, M., Pitts, M. C., and Poole, L. R.: Comparison between CALIPSO and MIPAS observations of polar stratospheric clouds, *J. Geophys. Res.*, 114, D00H05, doi:10.1029/2009jd012114, 2009.
- Koop, T., Ng, H. P., Molina, L. T., and Molina, M. J.: A new optical technique to study aerosol phase transitions: The nucleation of ice from H₂SO₄ aerosols, *J. Phys. Chem. A*, 102, 8924–8931, 1998.
- Lowe, D. and MacKenzie, A. R.: Polar stratospheric cloud microphysics and chemistry, *J. Atmos. Sol.-Terr. Phys.*, 70, 13–40, doi:10.1016/j.jastp.2007.09.011, 2008.
- Marti, J. and Mauersberger, K.: Laboratory Simulations of PSC Particle Formation, *Geophys. Res. Lett.*, 20, 359–362, doi:10.1029/93GL00083, 1993.
- McDonald, A. J., George, S. E., and Woollands, R. M.: Can gravity waves significantly impact

Wave effects on PSCs

M. Kohma and K. Sato

Title Page

Abstract

Introduction

Conclusions

References

Tables

Figures

◀

▶

◀

▶

Back

Close

Full Screen / Esc

Printer-friendly Version

Interactive Discussion



**Wave effects on
PSCs**

M. Kohma and K. Sato

Title Page

Abstract

Introduction

Conclusions

References

Tables

Figures

◀

▶

◀

▶

Back

Close

Full Screen / Esc

Printer-friendly Version

Interactive Discussion



PSC occurrence in the Antarctic?, *Atmos. Chem. Phys.*, 9, 8825–8840, doi:10.5194/acp-9-8825-2009, 2009.

Noel, V., Hertzog, A., Chepfer, H., and Winker, D. M.: Polar stratospheric clouds over Antarctica from the CALIPSO spaceborne lidar, *J. Geophys. Res.*, 113, D02205, doi:10.1029/2007jd008616, 2008.

Orsolini, Y. J., Karpechko, A. Y., and Nikulin, G.: Variability of the Northern Hemisphere polar stratospheric cloud potential: the role of North Pacific disturbances, *Q. J. Roy. Meteorol. Soc.*, 135, 1020–1029, doi:10.1002/qj.409, 2009.

Pitts, M. C., Thomason, L. W., Poole, L. R., and Winker, D. M.: Characterization of polar stratospheric clouds with spaceborne lidar: CALIPSO and the 2006 Antarctic season, *Atmos. Chem. Phys.*, 7, 5207–5228, doi:10.5194/acp-7-5207-2007, 2007.

Pitts, M. C., Poole, L. R., and Thomason, L. W.: CALIPSO polar stratospheric cloud observations: second-generation detection algorithm and composition discrimination, *Atmos. Chem. Phys.*, 9, 7577–7589, doi:10.5194/acp-9-7577-2009, 2009.

Rex, M., Von Der Gathen, P., Braathen, G. O., Harris, N. R. P., Reimer, E., Beck, A., Alfier, R., Krüger-carstensen, R., Chipperfield, M., De Backer, H., Balis, D., O'Connor, F., Dier, H., Dorokhov, V., Fast, H., Gamma, A., Gil, M., Kyrö, E., Litynska, Z., Mikkelsen, I. S., Molyneux, M., Murphy, G., Reid, S. J., Rummukainen, M., and Zerefos, C.: Chemical Ozone Loss in the Arctic Winter 1994/95 as Determined by the Match Technique, *J. Atmos. Chem.*, 32, 35–59, doi:10.1023/A:1006093826861, 1999.

Rex, M., Salawitch, R. J., Harris, N. R. P., Gathen, P. v. d., Braathen, G. O., Schulz, A., Deckelmann, H., Chipperfield, M., Sinnhuber, B. M., Reimer, E., Alfier, R., Bevilacqua, R., Hoppel, K., Fromm, M., Lumpe, J., Küllmann, H., Kleinböhl, A., Bremer, H., König, M. v., Künzi, K., Toohey, D., Vömel, H., Richard, E., Aikin, K., Jost, H., Greenblatt, J. B., Loewenstein, M., Podolske, J. R., Webster, C. R., Flesch, G. J., Scott, D. C., Herman, R. L., Elkins, J. W., Ray, E. A., Moore, F. L., Hurst, D. F., Romashkin, P., Toon, G. C., Sen, B., Margitan, J. J., Wennberg, P., Neuber, R., Allart, M., Bojkov, B. R., Claude, H., Davies, J., Davies, W., Backer, H. D., Dier, H., Dorokhov, V., Fast, H., Kondo, Y., Kyrö, E., Litynska, Z., Mikkelsen, I. S., Molyneux, M. J., Moran, E., Nagai, T., Nakane, H., Parrondo, C., Ravegnani, F., Skrivankova, P., Viatte, P., and Yushkov, V.: Chemical depletion of Arctic ozone in winter 1999/2000, *J. Geophys. Res.*, 107, 8276, doi:10.1029/2001JD000533, 2002.

Rex, M., Salawitch, R. J., Gathen, P. v. d., Harris, N. R. P., Chipperfield, M. P., and Naujokat, B.: Arctic ozone loss and climate change, *Geophys. Res. Lett.*, 31, L04116,

doi:10.1029/2003GL018844, 2004.

Rosen, J. M.: The boiling point of stratospheric aerosols (Stratospheric aerosol boiling point measurement with photoelectric particle counter, observing sulfate radical as major constituent), *J. Appl. Meteorol.*, 10, 1044–1046, 1971.

5 Santee, M. L., Lambert, A., Read, W. G., Livesey, N. J., Cofield, R. E., Cuddy, D. T., Daffer, W. H., Drouin, B. J., Froidevaux, L., Fuller, R. A., Jarnot, R. F., Knosp, B. W., Manney, G. L., Perun, V. S., Snyder, W. V., Stek, P. C., Thurstans, R. P., Wagner, P. A., Waters, J. W., Muscari, G., de Zafra, R. L., Dibb, J. E., Fahey, D. W., Popp, P. J., Marcy, T. P., Jucks, K. W., Toon, G. C., Stachnik, R. A., Bernath, P. F., Boone, C. D., Walker, K. A., Urban, J.,
10 and Murtagh, D.: Validation of the Aura Microwave Limb Sounder HNO₃ measurements, *J. Geophys. Res.*, 112, D24S40, doi:10.1029/2007JD008721, 2007.

Schreiner, W., Rocken, C., Sokolovskiy, S., Syndergaard, S., and Hunt, D.: Estimates of the precision of GPS radio occultations from the COSMIC/Formosat-3 mission, *Geophys. Res. Lett.*, 34, L04808, doi:10.1029/2006GL027557, 2007.

15 Shepherd, M. G., and Tsuda, T.: Large-scale planetary disturbances in stratospheric temperature at high-latitudes in the southern summer hemisphere, *Atmos. Chem. Phys.*, 8, 7557–7570, doi:10.5194/acp-8-7557-2008, 2008.

Shibata, T., Sato, K., Kobayashi, H., Yabuki, M., and Shiobara, M.: Antarctic polar stratospheric clouds under temperature perturbation by nonorographic inertia gravity waves observed by micropulse lidar at Syowa Station, *J. Geophys. Res.*, 108, 4105, doi:10.1029/2002JD002713,
20 2003.

Solomon, S.: Stratospheric Ozone Depletion: A Review of Concepts and History, *Rev. Geophys.*, 37, 275–316, 1999.

25 Tabazadeh, A., Toon, O. B., and Jensen, E. J.: Formation and implications of ice particle nucleation in the stratosphere, *Geophys. Res. Lett.*, 24, 2007–2010, doi:10.1029/97GL01883, 1997.

Tabazadeh, A., Jensen, E. J., Toon, O. B., Drdla, K., and Schoeberl, M. R.: Role of the stratospheric polar freezing belt in denitrification, *Science*, 291, 2591–2594, doi:10.1126/science.1057228, 2001.

30 Teitelbaum, H. and Sadourny, R.: The role of planetary waves in the formation of polar stratospheric clouds, *Tellus A*, 50, 302–312, doi:10.1034/j.1600-0870.1998.t01-2-00004.x, 1998.

Teitelbaum, H., Moustou, M., and Fromm, M.: Exploring polar stratospheric cloud and ozone minihole formation: The primary importance of synoptic-scale flow perturbations, *J. Geo-*

Wave effects on PSCs

M. Kohma and K. Sato

Title Page

Abstract

Introduction

Conclusions

References

Tables

Figures

◀

▶

◀

▶

Back

Close

Full Screen / Esc

Printer-friendly Version

Interactive Discussion



phys. Res., 106, 28173–28188, doi:10.1029/2000JD000065, 2001.

Wang, Z., Stephens, G., Deshler, T., Trepte, C., Parish, T., Vane, D., Winker, D., Liu, D., and Adhikari, L.: Association of Antarctic polar stratospheric cloud formation on tropospheric cloud systems, Geophys. Res. Lett., 35, L13806, doi:10.1029/2008gl034209, 2008.

- 5 Yoshiki, M., Kizu, N., and Sato, K.: Energy enhancements of gravity waves in the Antarctic lower stratosphere associated with variations in the polar vortex and tropospheric disturbances, J. Geophys. Res., 109, D23104, doi:10.1029/2004JD004870, 2004.

ACPD

11, 16967–17012, 2011

Wave effects on PSCs

M. Kohma and K. Sato

Title Page

Abstract

Introduction

Conclusions

References

Tables

Figures

◀

▶

◀

▶

Back

Close

Full Screen / Esc

Printer-friendly Version

Interactive Discussion



Wave effects on
PSCs

M. Kohma and K. Sato

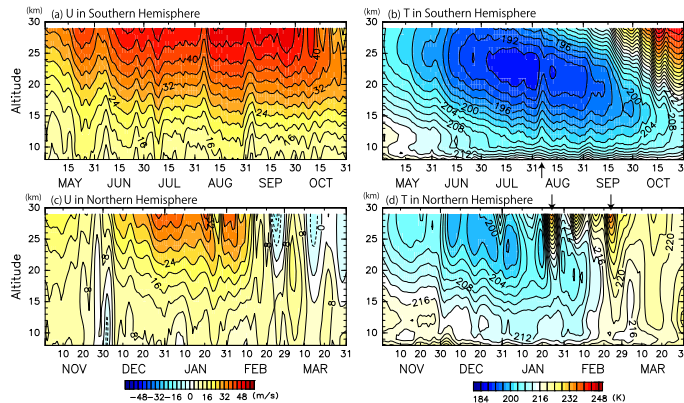


Fig. 1. Time-altitude sections of **(a)** \bar{U} and **(b)** \bar{T} averaged within the latitude range of 55°S – 85°S in May through October 2008 and **(c)** \bar{U} and **(d)** \bar{T} within the latitude range of 55°N – 85°N in November 2007 through March 2008. Arrows on the bottom of **(b)** and on the top of **(d)** show timings when warmings occur.

Title Page

Abstract

Introduction

Conclusions

References

Tables

Figures

◀

▶

◀

▶

Back

Close

Full Screen / Esc

Printer-friendly Version

Interactive Discussion



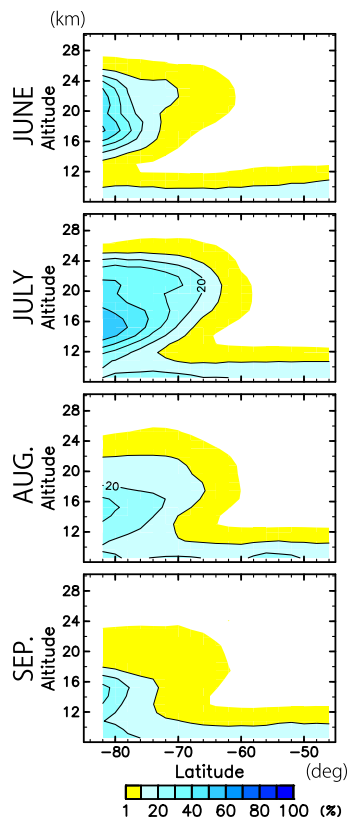


Fig. 2. Latitude-altitude sections of zonal-mean monthly-mean PSC frequency F , in June through September 2008, obtained from CALIPSO data.

Wave effects on PSCs

M. Kohma and K. Sato

Title Page	
Abstract	Introduction
Conclusions	References
Tables	Figures
◀	▶
◀	▶
Back	Close
Full Screen / Esc	
Printer-friendly Version	
Interactive Discussion	



Wave effects on
PSCs

M. Kohma and K. Sato

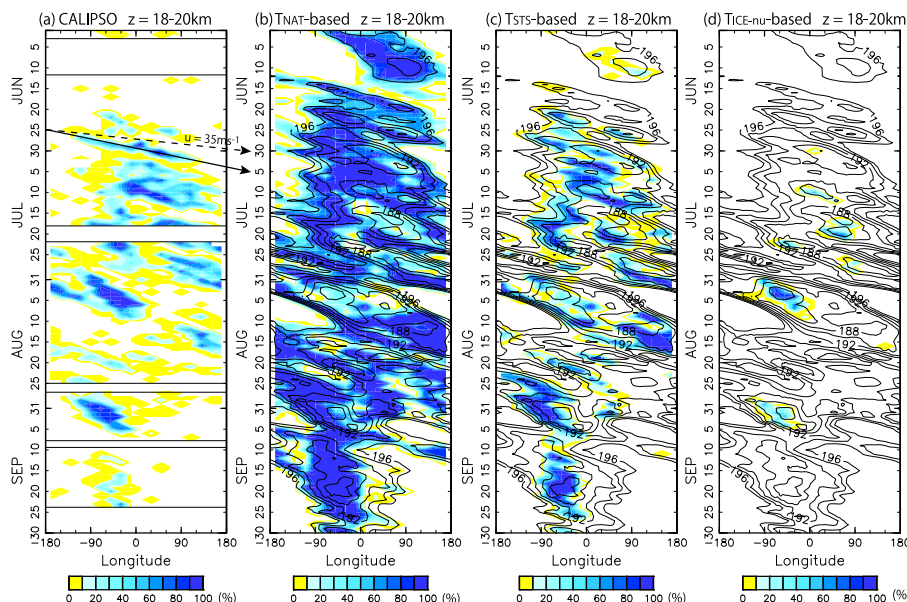


Fig. 3. (a) Hovmöller diagram of PSC frequency from CALIPSO observations in austral winter of 2008 averaged within an altitude range of 18–20 km in the latitude range of 65° S–70° S. Time periods surrounded by black solid lines denote time periods when CALIPSO data are missing. A solid arrow shows the zonal velocity (20 m s^{-1}) of high F regions. A dashed arrow shows zonal-mean zonal wind speed (35 m s^{-1}). (b) The same as (a) but for the F estimates based on T_{NAT} as a temperature threshold. Contour lines show temperatures at 50 hPa from ERA-Interim data at an interval of 2 K. (c)–(d) The same as (b) but for T_{STS} and $T_{\text{ICE-nu}}$ as temperature thresholds, respectively.

Title Page

Abstract

Introduction

Conclusions

References

Tables

Figures

◀

▶

◀

▶

Back

Close

Full Screen / Esc

Printer-friendly Version

Interactive Discussion



Wave effects on PSCs

M. Kohma and K. Sato

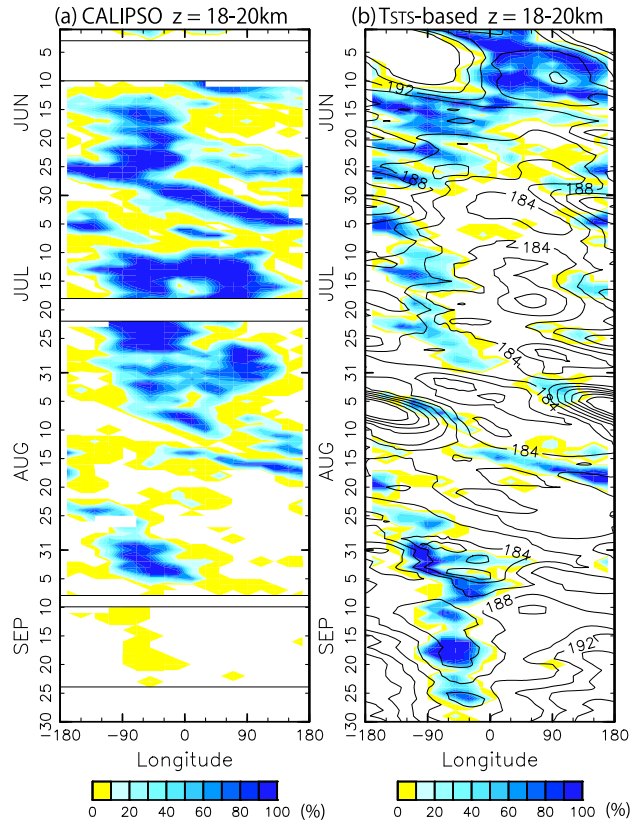


Fig. 4. The same as Fig. 3a and c but for the latitude range of 75° S–80° S.

Title Page

Abstract Introduction

Conclusions References

Tables Figures

◀ ▶

◀ ▶

Back Close

Full Screen / Esc

Printer-friendly Version

Interactive Discussion



Wave effects on
PSCs

M. Kohma and K. Sato

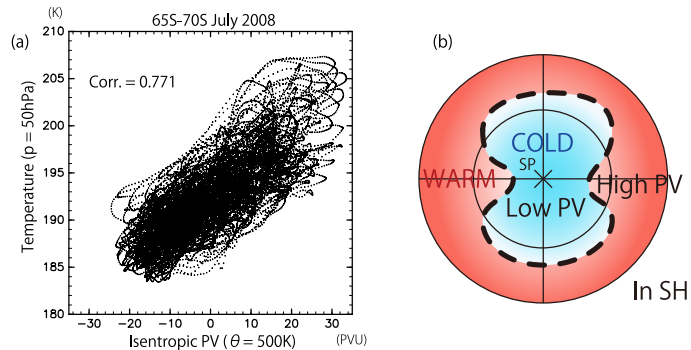


Fig. 5. (a) Scatter diagram of $s = 1$ –3 potential vorticity fluctuation components on 500 K isentropic surface and $s = 0$ –3 temperature components at 50 hPa in the latitude range of 65° S– 70° S in July. “Corr.” stands for correlation efficient. (b) Schematic illustration of the relation between temperature and potential vorticity in the middle stratosphere of the Southern Hemisphere. Red (blue) area indicates warm (cold) temperature. The broken curve illustrates a polar night jet modulated by a planetary wave.

Title Page

Abstract

Introduction

Conclusions

References

Tables

Figures

◀

▶

◀

▶

Back

Close

Full Screen / Esc

Printer-friendly Version

Interactive Discussion



Wave effects on
PSCs

M. Kohma and K. Sato

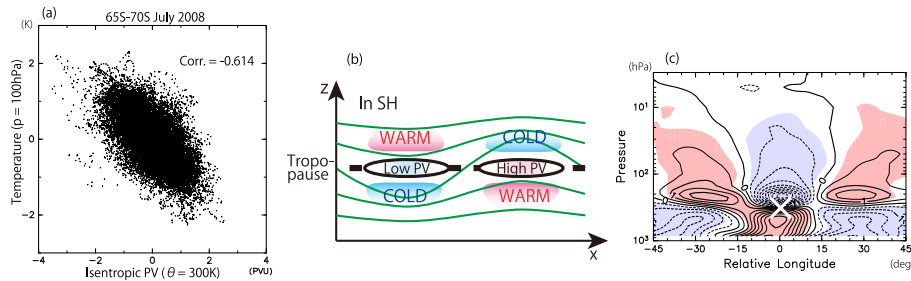


Fig. 6. (a) A scatter diagram of $s = 4$ – 20 potential vorticity fluctuation components on 300 K isentropic surface and $s = 4$ – 20 temperature fluctuation components at 100 hPa in the latitude range of 65° S – 70° S in July. “Corr.” stands for correlation coefficient. (b) A schematic illustration of the relation between temperature anomalies (colors) and potential vorticity near the tropopause (black broken line) in the Southern Hemisphere. Green curves indicate isobars. (c) A composite of the relative longitude–pressure section of $s = 4$ – 20 temperature components in July 2008 with a reference point (a white cross mark) where the $s = 4$ – 20 potential vorticity components are positive and maximized in the zonal direction at 65° S on $\theta = 300\text{ K}$ surface, and values are larger than 2.5 PVU . Contour intervals are 0.5 K . Broken contours indicate negative values. Shading shows the regions with significance levels greater than 99% .

Title Page

Abstract

Introduction

Conclusions

References

Tables

Figures

◀

▶

◀

▶

Back

Close

Full Screen / Esc

Printer-friendly Version

Interactive Discussion

Wave effects on
PSCs

M. Kohma and K. Sato

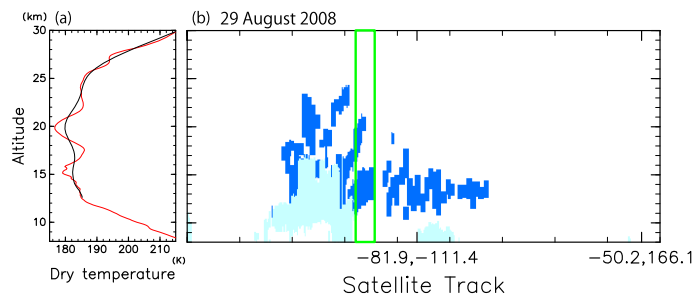


Fig. 7. (a) Original (red) and smoothed (black) profiles of dry temperature at 82.8° W, 80.2° E on 29 August 2008 from COSMIC/Formosat-3. A smoothing was made using a lowpass filter with a cutoff length of 6 km. (b) A horizontal and height section of feature type from CALIPSO on 29 August 2008. Blue (light blue) areas indicate “stratospheric” cloud (tropospheric “cloud”) layers. A green rectangle indicates the region of the dry temperature profile show in (a).

[Title Page](#)[Abstract](#)[Introduction](#)[Conclusions](#)[References](#)[Tables](#)[Figures](#)[◀](#)[▶](#)[◀](#)[▶](#)[Back](#)[Close](#)[Full Screen / Esc](#)[Printer-friendly Version](#)[Interactive Discussion](#)

Wave effects on
PSCs

M. Kohma and K. Sato

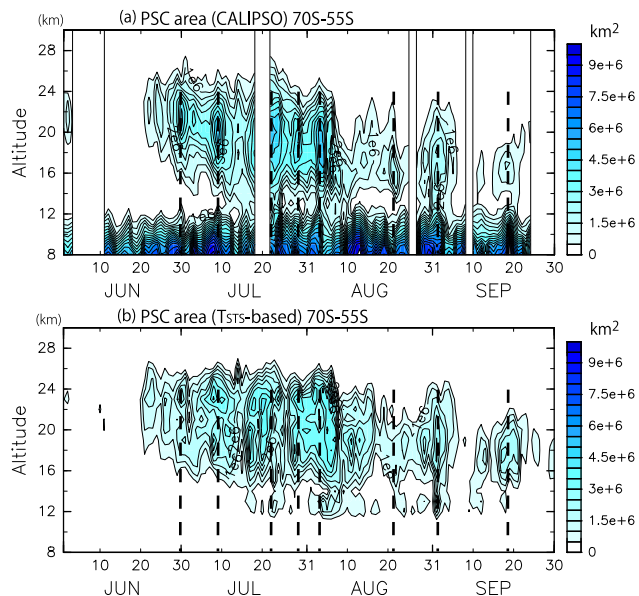


Fig. 8. Time-altitude sections of **(a)** PSC areal extent obtained from CALIPSO observations and **(b)** T_{STS} -based PSC areal extent in the latitude range of 55°S – 70°S in 2008. Broken lines show timings when observed PSC areal extent is maximized. Thin solid lines show the time periods during which CALIPSO data are missing. Contour intervals are $5 \times 10^5 \text{ km}^2$.

Title Page

Abstract

Introduction

Conclusions

References

Tables

Figures

◀

▶

◀

▶

Back

Close

Full Screen / Esc

Printer-friendly Version

Interactive Discussion



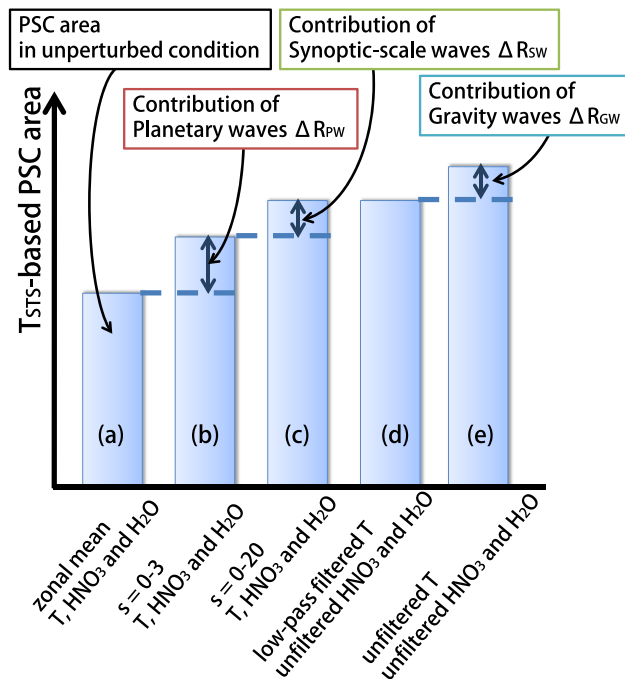


Fig. 9. A method to estimate the effects of planetary waves, synoptic-scale waves and gravity waves on PSC areal extent. **(a)** T_{STS} -based PSC area calculated from $s = 0$ components (i.e. zonal-mean) of temperature from ERA-Interim data and mixing ratios of HNO_3 and H_2O from Aura MLS. **(b)–(c)** Same as **(a)** but for $s = 0\text{--}3$ and $s = 0\text{--}20$ components, respectively. **(d)–(e)** T_{STS} -based PSC area calculated from smoothed and original temperature from COSMIC/Formosat-3, respectively. The cutoff length of the lowpass filter used for temperature in **(d)** is 6 km. The unfiltered mixing ratios of HNO_3 and H_2O are used.

Wave effects on PSCs

M. Kohma and K. Sato

Title Page	
Abstract	Introduction
Conclusions	References
Tables	Figures
◀	▶
◀	▶
Back	Close
Full Screen / Esc	
Printer-friendly Version	
Interactive Discussion	



Wave effects on
PSCs

M. Kohma and K. Sato

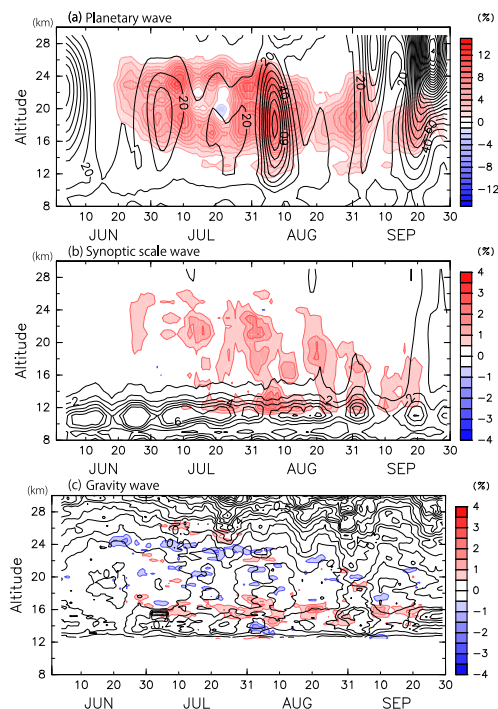


Fig. 10. Time-altitude sections of 5-day-running means for **(a)** ΔR_{PW} , **(b)** ΔR_{SW} and **(c)** ΔR_{GW} (color) in the latitude range of 55°S – 70°S . A 500 m-running mean is applied to ΔR_{GW} in the vertical direction. Contours indicate the zonal-mean and latitudinal-mean (55°S – 70°S) variance of temperature fluctuations due to the respective waves. Contour intervals are **(a)** 10K^2 , **(b)** 1K^2 and **(c)** 0.05K^2 .

Title Page

Abstract

Introduction

Conclusions

References

Tables

Figures

◀

▶

◀

▶

Back

Close

Full Screen / Esc

Printer-friendly Version

Interactive Discussion



Wave effects on
PSCs

M. Kohma and K. Sato

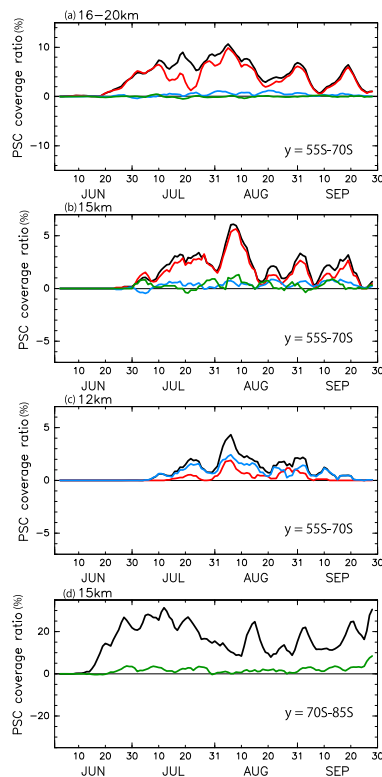


Fig. 11. Time series of 5-day-running means for ΔR_{PW} (red), ΔR_{SW} (blue) and ΔR_{GW} (green) in the latitude range of 55° S–70° S at altitudes of (a) 16–20 km, (b) 15 km and (c) 12 km. Black curves indicate R_{ALL} . (d) The same as (b) but for 70° S–85° S. Only a result for gravity waves is shown.

Title Page

Abstract

Introduction

Conclusions

References

Tables

Figures

◀

▶

◀

▶

Back

Close

Full Screen / Esc

Printer-friendly Version

Interactive Discussion



Wave effects on
PSCs

M. Kohma and K. Sato

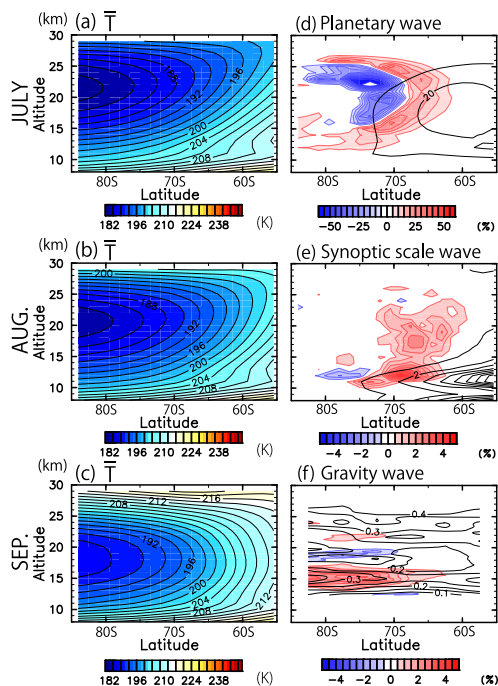


Fig. 12. (a)–(c) Latitude-altitude sections of zonal-mean and monthly-mean temperature in July through September. Contour intervals are 2 K. (d)–(f) Latitude-altitude sections of zonal-mean and monthly-mean difference of PSC frequency ΔF between with and without (d) planetary waves in July, (e) synoptic-scale waves in August and (f) gravity waves in September. Positive values mean an increase in PSC frequency. Black contours indicate temperature variance due to the respective waves. Contour intervals are 10 K^2 for (d), 1 K^2 for (e) and 0.05 K^2 for (f).

Title Page

Abstract

Introduction

Conclusions

References

Tables

Figures

◀

▶

◀

▶

Back

Close

Full Screen / Esc

Printer-friendly Version

Interactive Discussion



**Wave effects on
PSCs**

M. Kohma and K. Sato

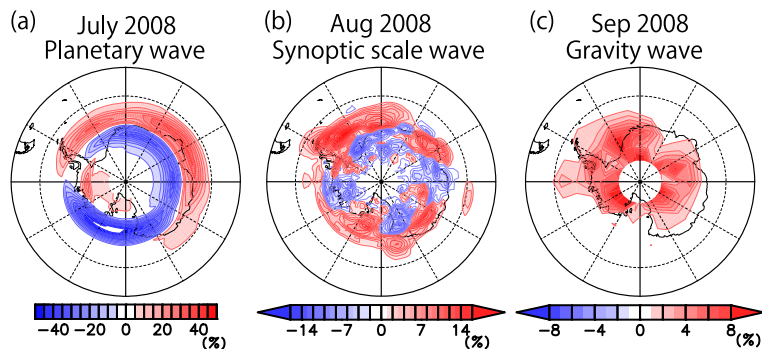


Fig. 13. Polar stereographic maps of monthly-mean ΔF **(a)** due to planetary waves at 16–20 km in July, **(b)** due to synoptic-scale waves at 12 km in August and **(c)** due to gravity waves at 15 km in September.

[Title Page](#)[Abstract](#)[Introduction](#)[Conclusions](#)[References](#)[Tables](#)[Figures](#)[◀](#)[▶](#)[◀](#)[▶](#)[Back](#)[Close](#)[Full Screen / Esc](#)[Printer-friendly Version](#)[Interactive Discussion](#)

Wave effects on
PSCs

M. Kohma and K. Sato

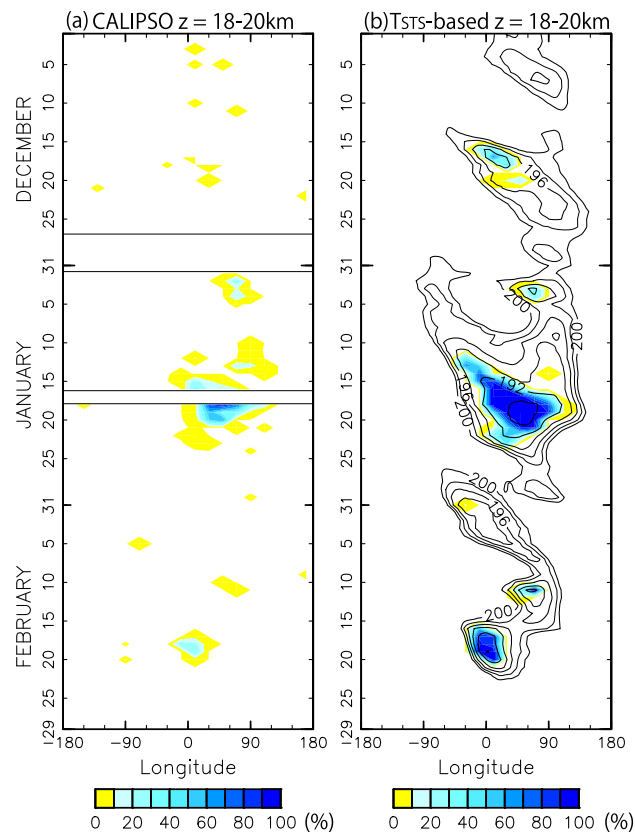


Fig. 14. The same as Fig. 3 but for the latitude range of 65° N–70° N in the winter of 2007/2008.

Title Page

Abstract

Introduction

Conclusions

References

Tables

Figures

◀

▶

◀

▶

Back

Close

Full Screen / Esc

Printer-friendly Version

Interactive Discussion



Wave effects on
PSCs

M. Kohma and K. Sato

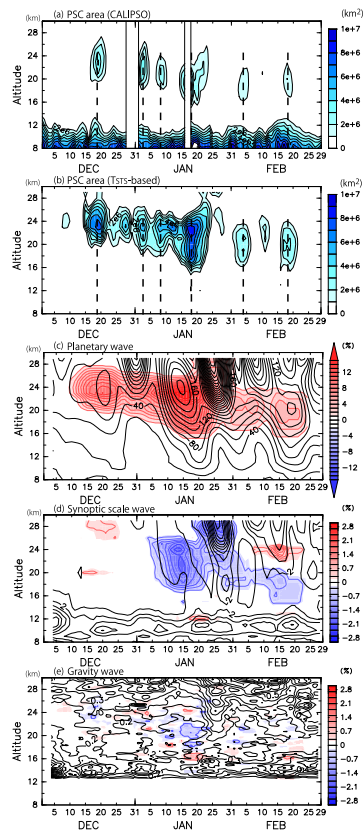


Fig. 15. (a)–(b) The same as Fig. 8 but for the latitude range of 55° N– 85° N in the 2007/2008 winter. (c)–(e) The same as Fig. 10 but for the the latitude range of 55° N– 85° N in the 2007/2008 winter. Contour intervals are (a) 20 K^2 , (b) 0.5 K^2 and (c) 0.05 K^2 .

Title Page

Abstract

Introduction

Conclusions

References

Tables

Figures

◀

▶

◀

▶

Back

Close

Full Screen / Esc

Printer-friendly Version

Interactive Discussion



**Wave effects on
PSCs**

M. Kohma and K. Sato

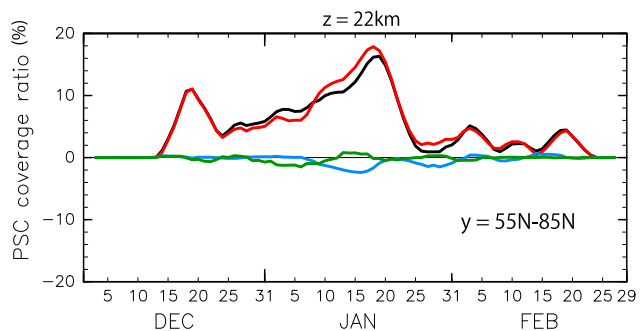


Fig. 16. The same as Fig. 11 but for the latitude range of 55° N–85° N at an altitude of 22 km in December 2007 through February 2008.

[Title Page](#)[Abstract](#)[Introduction](#)[Conclusions](#)[References](#)[Tables](#)[Figures](#)[◀](#)[▶](#)[◀](#)[▶](#)[Back](#)[Close](#)[Full Screen / Esc](#)[Printer-friendly Version](#)[Interactive Discussion](#)

Wave effects on PSCs

M. Kohma and K. Sato

Jan 2008
Planetary wave

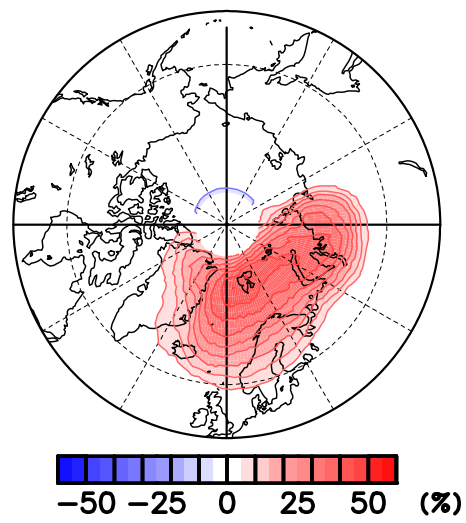


Fig. 17. The same as Fig. 13a but for January 2008 in the Northern Hemisphere at an altitude of 22 km.

Title Page	
Abstract	Introduction
Conclusions	References
Tables	Figures
◀	▶
◀	▶
Back	Close
Full Screen / Esc	
Printer-friendly Version	
Interactive Discussion	

