

1 **SUPPLEMENTARY INFORMATION FOR:**

2

3 **Seasonal and diurnal variations of particulate nitrate and**
4 **organic matter in the Central European atmospheric**
5 **aerosol**

6

7 **L. Poulain¹, G. Spindler¹, W. Birmili¹, C. Plass-Dülmer², A. Wiedensohler¹, H.**
8 **Herrmann¹**

9 [1]{Leibniz-Institut für Troposphärenforschung (IfT), Leipzig, Germany}

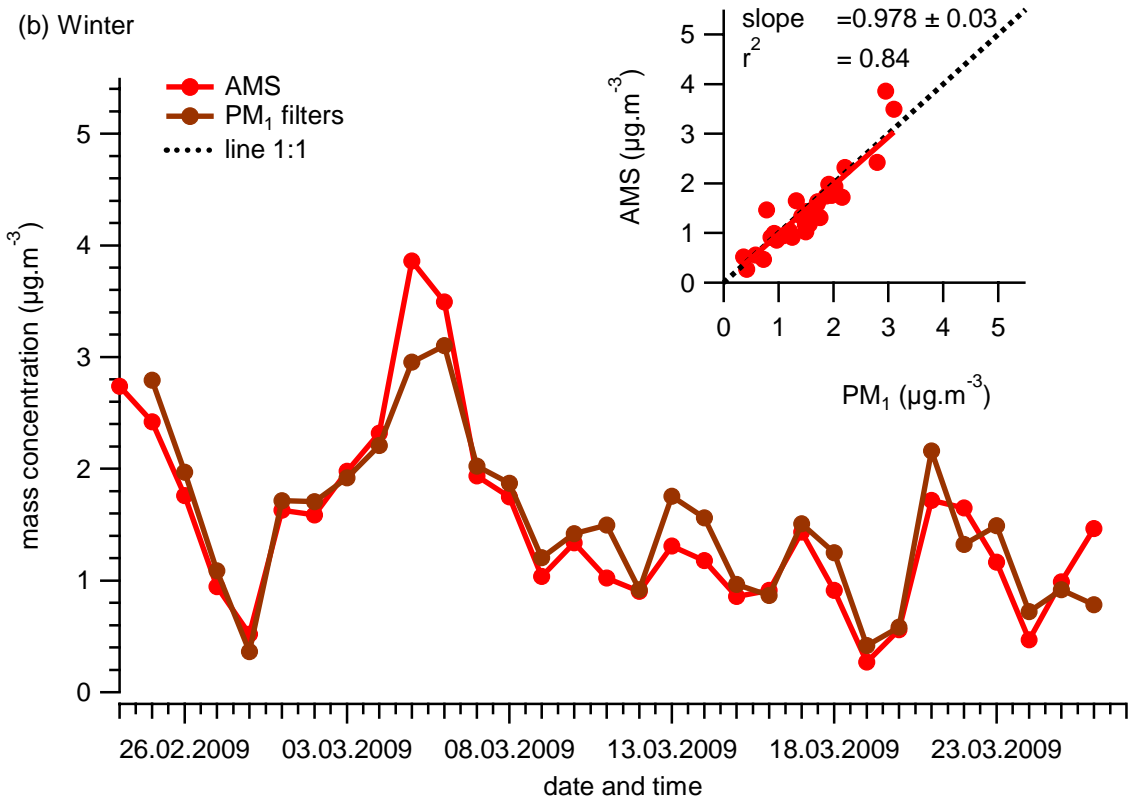
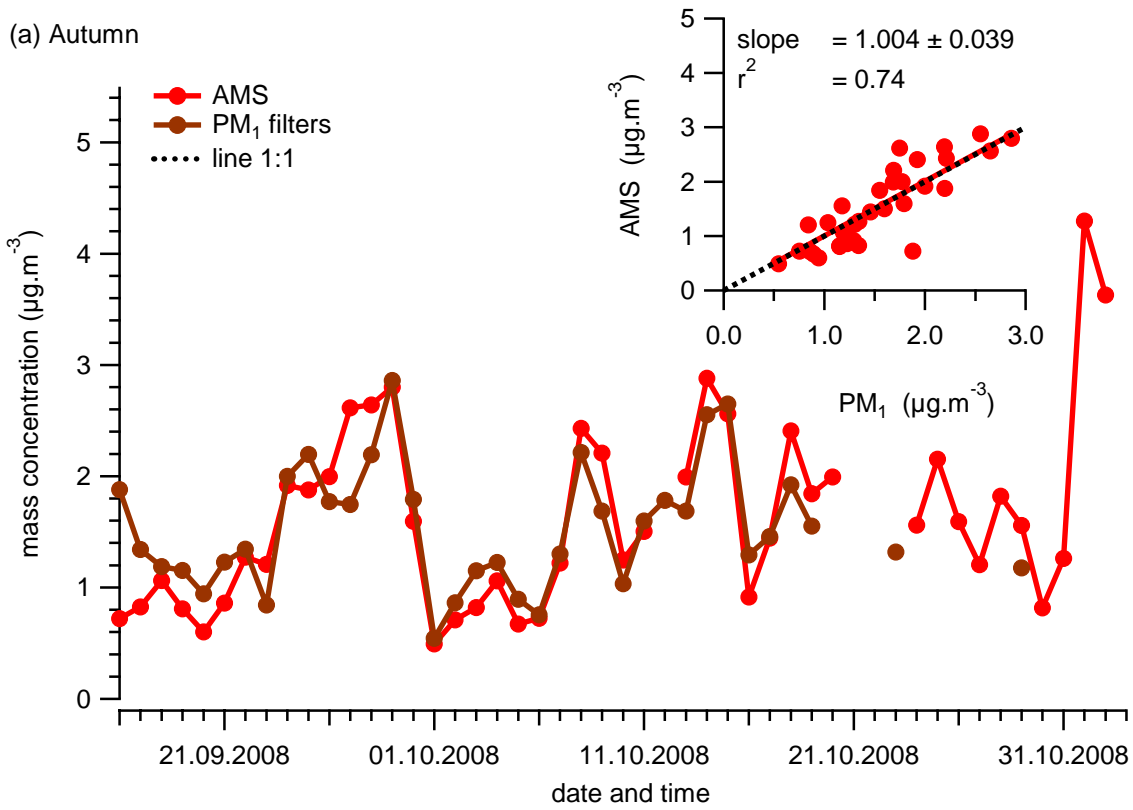
10 [2]{German Weather Service, Hohenpeissenberg, Germany}

11 Correspondence to: H. Herrmann (herrmann@tropos.de)

12

13

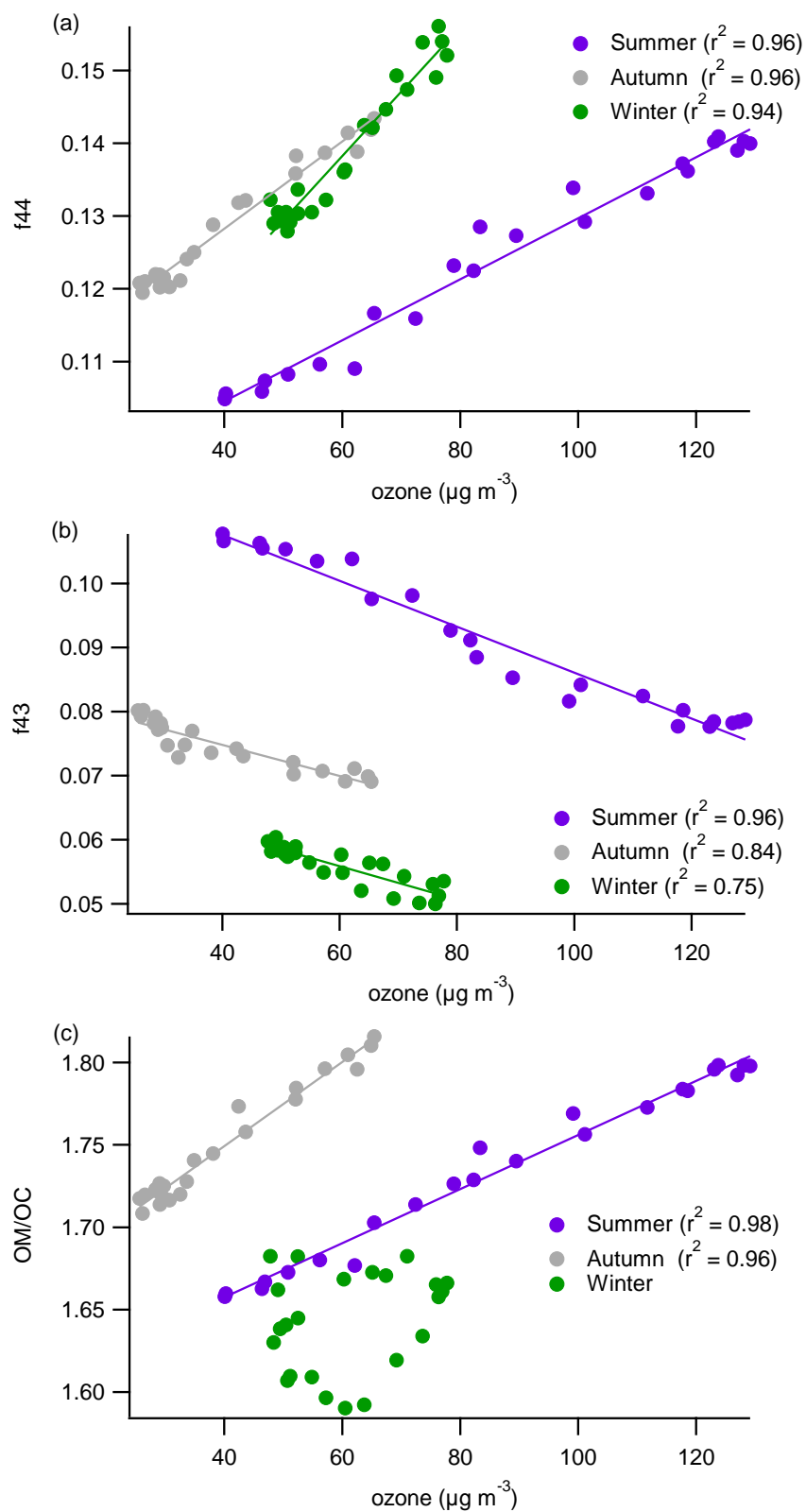
14



1

2 Figure S1: Comparison of the AMS sulphate concentration and daily PM₁ filters samples.

3



1
 2 Figure S2: Correlation plots of the diurnal organic tracers (a: f44, b: f43 and c: OM/OC) and
 3 ozone for the different seasons.

4