

This discussion paper is/has been under review for the journal Atmospheric Chemistry and Physics (ACP). Please refer to the corresponding final paper in ACP if available.

**Snow-sourced  
bromine and its  
implications for polar  
tropospheric ozone**

Xin Yang et al.

# Snow-sourced bromine and its implications for polar tropospheric ozone

Xin Yang<sup>1,2</sup>, J. A. Pyle<sup>1,2</sup>, R. A. Cox<sup>1</sup>, N. Theys<sup>3</sup>, and M. Van Roozendael<sup>3</sup>

<sup>1</sup>National Centre for Atmospheric Science (NCAS), Cambridge, CB2 1EW, UK

<sup>2</sup>Centre for Atmospheric Science, Department of Chemistry, University of Cambridge, Cambridge CB2 1EW, UK

<sup>3</sup>Institut d'Aéronomie Spatiale de Belgique (IASB-BIRA), Brussels, Belgium

Received: 24 February 2010 – Accepted: 22 March 2010 – Published: 29 March 2010

Correspondence to: Xin Yang (xin.yang@atm.ch.cam.ac.uk)

Published by Copernicus Publications on behalf of the European Geosciences Union.

Title Page

Abstract

Introduction

Conclusions

References

Tables

Figures

⏪

⏩

◀

▶

Back

Close

Full Screen / Esc

Printer-friendly Version

Interactive Discussion

## Abstract

In the last two decades, significant depletion of boundary layer ozone (ozone depletion events, ODEs) has been observed in both Arctic and Antarctic spring. ODEs are attributed to catalytic destruction by bromine radicals (Br plus BrO), especially during bromine explosion events (BEs), when high concentrations of BrO periodically occur. However, neither the exact source of bromine nor the mechanism for sustaining the observed high BrO concentrations is completely understood. Here, by considering the production of sea salt aerosol from snow lying on sea ice during blowing snow events and the subsequent release of bromine, we successfully simulate the BEs using a global chemistry transport model. We find that heterogeneous reactions play an important role in sustaining a high fraction of the total inorganic bromine as BrO. Modeled tropospheric BrO columns generally compare well with the tropospheric BrO columns retrieved from the GOME satellite instrument (Global Ozone Monitoring Experiment). The additional blowing snow bromine source, identified here, reduces modeled high latitude lower tropospheric ozone amounts by up to an average 8% in polar spring.

## 1 Introduction

Bromine radicals (Br plus BrO) are important atmospheric halogen species which may regulate ozone concentrations in both the stratosphere and troposphere (World Meteorological Organization (WMO), 2003; von Glasow et al., 2004; Salawitch et al., 2005; Yang et al., 2005) and which also have significant effects on other tropospheric processes such as the sulfur cycle (von Glasow and Crutzen, 2004; Breider et al., 2010) and mercury oxidation (Holmes et al., 2006; Seigneur and Lohman, 2008). Significant ozone depletion events (ODES), first observed in the boundary layer in polar spring (Barrie et al., 1998; Wessel et al., 1998), are attributed to catalytic destruction by halogen radicals, especially during bromine explosion events (BEs, see, e.g., McConnell et al., 1992; Fan and Jacob, 1992). However, the mechanism for the bromine release dur-

ACPD

10, 8135–8164, 2010

## Snow-sourced bromine and its implications for polar tropospheric ozone

Xin Yang et al.

Title Page

Abstract

Introduction

Conclusions

References

Tables

Figures

⏪

⏩

◀

▶

Back

Close

Full Screen / Esc

Printer-friendly Version

Interactive Discussion

ing BEs is not completely clear. Photochemical reactions within the snow pack could result in bromine release (Foster et al., 2001; Simpson et al., 2005, 2007). Frost flowers have also been suggested as a potentially important bromine source (Kaleschke et al., 2004; Sander et al., 2006), but are not likely to be a direct source, although when frost flowers are dispersed into the atmosphere by strong surface winds they could make some contribution (Alvarez-Aviles et al., 2008). A recent calculation demonstrates that the sea salt produced in association with blowing snow events could be a significant bromine source (Yang et al., 2008), which is consistent with recent in-situ measurements of higher bromide levels in blowing snow in coastal Antarctica (Jones et al., 2009). Inclusion of this source in the Arctic has a significant effect on tropospheric BrO and oxidation (through ozone and OH) (Voulgarakis et al., 2009).

Snow lying on sea ice accumulates sea salt through various pathways. Using measurements of the mean column salinity of snow on young Antarctic sea ice (Massom et al., 2001) and a parameterization for sea salt aerosol production in blowing snow events, we have found that the resulting sea salt aerosol production rate (per unit area under typical weather conditions) can be more than an order of magnitude larger than that from the open ocean (Yang et al., 2008). This finding is consistent with observations of sea salt aerosol magnitude and seasonality (Hall et al., 1998) and also with the ice-core records (Rankin et al., 2002). Here, by considering the sea salt production from snow lying on sea ice during blowing snow events and the subsequent bromine release, we aim to simulate the BEs. The scheme is evaluated by direct comparisons with tropospheric BrO columns retrieved from the GOME satellite instrument.

In Sect. 2, we present details of the model scheme for the bromine release and the additional heterogeneous bromine chemistry as implemented in a global chemical transport model p-TOMCAT. Section 3 describes the retrieval of tropospheric BrO columns from the GOME satellite instrument. Section 4 compares the model and observations. In Sect. 5 the sensitivity of the model to both snow salinity and the sea salt bromine depletion factor is explored. Finally, conclusions are reached in Sect. 6.

---

## Snow-sourced bromine and its implications for polar tropospheric ozone

Xin Yang et al.

---

[Title Page](#)[Abstract](#)[Introduction](#)[Conclusions](#)[References](#)[Tables](#)[Figures](#)[⏪](#)[⏩](#)[◀](#)[▶](#)[Back](#)[Close](#)[Full Screen / Esc](#)[Printer-friendly Version](#)[Interactive Discussion](#)

## 2 Model tropospheric BrO

### 2.1 Basic model information

p-TOMCAT is a chemistry-transport model which has been widely used for tropospheric chemistry studies. Here it is forced by ECMWF reanalysis data and run at a horizontal resolution of approximately  $5.6^\circ$  with 31 vertical layers up to 10 hpa. Runs are based on an earlier model version, which includes bromine chemistry in the troposphere (Yang et al., 2005). In this study, we include the bromine source from polar sea ice, as introduced by Yang et al. (2008), in addition to the two sources already included in our previous studies: open ocean sea salt (Yang et al., 2005) and bromocarbons (Warwick et al., 2006). For more detailed information about the physical and chemical aspects of the model, see related papers by Wang et al. (1999), Savage et al. (2004), O'Connor et al. (2005), Cook et al. (2007) and O'Brien et al. (2009).

### 2.2 Main features of the blowing scheme

Snow, lying on sea ice, contains bromine salts. The new bromine source included in these calculations arises when wind lifts this bromine-containing snow into the atmosphere. Many of the underlying processes are not included in the base CTM and have to be either specified or parameterized. Their treatment, described in detail in Yang et al. (2008), is outlined here in Sects. 2.3 to 2.5.

The scheme requires the spatial and temporal coverage of sea ice. We do not attempt to model this; instead, here we use two sea ice data sets: monthly global sea ice (Comiso, 1990, updated 2005) and multiyear sea ice in the Arctic (Kwok, 2004). The essential features of the subsequent calculation of the bromine flux from above the sea ice are given in Sect. 2.3. The calculation depends on the rate at which snow particles are lifted from the surface and subsequent sublimation (which depends on wind speed, temperature, environmental relative humidity and the age of snow) and the rate of release of bromine from the suspended sea salt aerosol (which is obtained from

## Snow-sourced bromine and its implications for polar tropospheric ozone

Xin Yang et al.

Title Page

Abstract

Introduction

Conclusions

References

Tables

Figures

⏪

⏩

◀

▶

Back

Close

Full Screen / Esc

Printer-friendly Version

Interactive Discussion

observed bromine depletion factors, salinity, etc.). Snow salinity is discussed in more detail in Sect. 2.4. An important new feature of the model is the inclusion of additional heterogeneous reactions, which reactivate bromine compounds. These are presented in Sect. 2.5.

## 5 2.3 Bromine emission from blowing snow

As described in Yang et al. (2008), the bromine release flux (in units of kg Br/m<sup>2</sup> s) from blowing snow sea salt aerosols can be expressed as:

$$Q_{\text{Br}} = DF_i R_a \sum_i \frac{f(d_i) Q_s \zeta}{1000} \quad (1)$$

where  $Q_s$  is the blowing snow sublimation rate (in units of kg/m<sup>2</sup> s) and follows the approach of Dery and Yau (1999, 2001, 2002).  $Q_s$  is a complex function of wind speed at 10 m, air temperature, environmental relative humidity and snow age (see Eq. (1) of Yang et al., 2008).  $DF_i$  are size-dependent bromine depletion factors based on observations collected by Sander et al. (2003).  $R_a = 0.00233$  kg/kg is the Br/Cl mass ratio in sea salt.  $\zeta$  is the snow particle salinity.  $f(d_i)$  is the suspended particle probability density in blowing events which follows a two-parameter gamma probability function (Schmidt, 1982). The snow age also affects  $Q_s$ . In Yang et al. (2008) the sensitivity of the calculation to two different specified ages (3 and 7 days) was considered. Results were not very sensitive to this change.

In this calculation, for each grid box containing sea ice, the snow age is given by the time since precipitation last fell at that location.

Generally, a large sublimation flux is expected under conditions of low relative humidity and high wind speed and in consequence this leads to high sea salt production and bromine release. However, as mentioned by Yang et al. (2008), only fine sea salt with dry diameter <10 μm is treated as a bromine source. Snow salinity has two effects on the bromine release. First, increased salinity leads directly to an increased

## Snow-sourced bromine and its implications for polar tropospheric ozone

Xin Yang et al.

Title Page

Abstract

Introduction

Conclusions

References

Tables

Figures

⏪

⏩

◀

▶

Back

Close

Full Screen / Esc

Printer-friendly Version

Interactive Discussion

---

## Snow-sourced bromine and its implications for polar tropospheric ozone

Xin Yang et al.

---

Title Page

Abstract

Introduction

Conclusions

References

Tables

Figures

⏪

⏩

◀

▶

Back

Close

Full Screen / Esc

Printer-friendly Version

Interactive Discussion

bromine source ( $Q_{\text{Br}}$  varies linearly with  $\zeta$  in Eq. (1)). However, salinity also affects the aerosol size distribution. For example, reducing the snow salinity leads to more sea salt aerosol of small diameter ( $<10\ \mu\text{m}$ ), which then offsets the direct effect of lower salinity on the total bromine release. So, the response of bromine release to changing salinity is non-linear.

A further factor affecting bromine release is the depletion factor;  $Q_{\text{Br}}$  varies linearly with DF (see Eq. 1). Here we specify DF as a function of particle size, based on the dataset compiled by Sander et al. (2003), in order to estimate bromine release from differently sized sea salt aerosol particles. Bromine depletion in sea salt is related to acidity and may have significant spatial and temporal variations. Indeed there is considerable variation in DF for a given particle size in the Sander et al. (2003) dataset. Using a fixed DF globally is an important contribution to the overall model uncertainty. Breider et al. (2010) also used the Sander et al. (2003) dataset in their modeling study. They took median values, which can be more than a factor of 2 higher than the mean values that we have used, introducing further uncertainty. We will explore the sensitivity of the model to DF in Sect. 5.

### 2.4 Snow salinity

Many factors influence the supply of ionic salt to snow deposited on the sea ice including frost flowers on young sea ice, upwards migration of brine within snow, input of sea salt aerosols from adjacent leads or polynyas and flooding, etc. Strong surface winds in polar regions will redistribute these salty particles, The snow salinity used in the model is based on the detailed analysis of data reviewed by Massom et al. (2001) for Antarctic first year sea ice. However, to our knowledge, although there are isolated measurements in the Arctic, we have not seen a similar collection of snow salinity data for the Arctic. Of course, scaling-up local or regional observations to the global scale is always a significant challenge. To extrapolate Antarctic snow salinity to the Arctic is not straightforward; there are significant differences in both oceanic and atmospheric environments. For example, firstly, according to precipitation data (Huffman et al., 2001),

**Snow-sourced  
bromine and its  
implications for polar  
tropospheric ozone**

Xin Yang et al.

Title Page

Abstract

Introduction

Conclusions

References

Tables

Figures

⏪

⏩

◀

▶

Back

Close

Full Screen / Esc

Printer-friendly Version

Interactive Discussion



winter precipitation in the Antarctic (April to September at 60–70° S) is about 3.5 times that of the Arctic (>70° N from October to March), implying that the snow salinity in the Arctic is less diluted. Secondly, the Arctic ocean has large areas of multiyear sea ice. The snow salinity will be reduced there, as a lower flooding frequency is expected over the multiyear sea ice compared to first year ice. In this study, we linearly extrapolate the Antarctic snow salinity from Massom et al. (2001) to Arctic first year sea ice. Assuming that there is a similar saline supply to sea ice snow in both polar regions and taking the N-S snowfall differences discussed above, the Arctic snow salinity on young sea ice will be about 3.5 times that of the Antarctic. Furthermore, we assume that there is no sea salt aerosol production from multiyear sea ice; only new ice is considered. Clearly, the extrapolation of observed Antarctic salinity to the Arctic is an important assumption whose impact on modeled bromine we explore in Sect. 5.

**2.5 Treatment of reactivation of inactive bromine species**

Three heterogeneous reactions on aerosols are introduced in a novel parameterization to reactivate Br radicals from the HBr reservoir, which is formed in the standard gas phase bromine photochemistry.



In the clean troposphere, most of the aerosol, except for fresh sea salt, contains very low Br<sup>-</sup> and the rate of Reactions (R1)–(R3) depends on the supply of each reactant from the gas phase and their relative abundance on the aerosol surface. We use Reaction (R1) as an example to show how we derive effective heterogeneous reaction rates in the model. We simply assume there is no net bromine accumulation in the aerosol and that the reaction occurs instantaneously on the surface. Then, Reaction (R1) can

be rewritten into two individual heterogeneous half-reactions by introducing a hypothetical transient reservoir species BrY, which has the same properties as Br<sub>2</sub>, but only contains one bromine atom.



Their rates in general would be given by

$$R_4 = \gamma_{0(\text{HOBr})} \nu_{(\text{HOBr})} A[\text{HOBr}] / 4 \quad (\text{R6})$$

$$R_5 = \gamma_{0(\text{HBr})} \nu_{(\text{HBr})} A[\text{HBr}] / 4 \quad (\text{R7})$$

10 where  $\gamma_{0(\text{HOBr})}$  and  $\gamma_{0(\text{HBr})}$  are the maximum uptake coefficients measured (when the surface is completely saturated with the second reactant);  $\nu_{(\text{HOBr})}$  and  $\nu_{(\text{HBr})}$  are molecular speeds; and [HOBr] and [HBr] are concentrations of reactant HOBr and HBr. A ( $\text{cm}^2/\text{cm}^3$ ) is the aerosol surface area density.

Obviously, the rate of the overall reaction is limited by the slower of these two rates so that, in the model, both half-reaction rates are set to the slower of the two rates.

15 The uptake coefficients used in this study are  $\gamma_{0(\text{HBr})} = 0.2$ ,  $\gamma_{0(\text{HOBr})} = 0.02$ ,  $\gamma_{0(\text{BrONO}_2)} = 0.036$  and  $\gamma_{0(\text{N}_2\text{O}_5)} = 0.025$ . The background aerosol density data are taken from measurements in the boundary layer (Heintzenberg et al., 2000), in the free troposphere and stratosphere (Schröder et al., 2002) and Reactions (R1)–(R3) are assumed to occur on background aerosols when there is no rainfall in a gridbox, otherwise, the hydrolysis reaction  $\text{BrONO}_2 + \text{H}_2\text{O} \rightarrow \text{HOBr} + \text{HNO}_3$  occurs.

20

## 2.6 Model experiments

Table 1 lists the model experiments conducted. The BASE run includes the three major bromine sources from blowing snow, open ocean sea salt and bromocarbons. The OCEAN run omits the blowing snow sea salt source. The noHET run is the same as

---

### Snow-sourced bromine and its implications for polar tropospheric ozone

Xin Yang et al.

---

Title Page

Abstract

Introduction

Conclusions

References

Tables

Figures

⏪

⏩

◀

▶

Back

Close

Full Screen / Esc

Printer-friendly Version

Interactive Discussion





BASE but with the heterogeneous Reactions (R1)–(R3) switched off in order to isolate the effect of heterogeneous recycling on the BrO fraction. The noBr run contains no bromine chemistry.

In addition, we have run two sensitivity experiments. The 2XDF run is the same as the BASE run but with doubled sea salt bromine DF just for the blowing-snow source. The Arctic1X uses the same snow salinity in the Arctic as in the Antarctic (whereas in BASE the Arctic salinity is 3.5 times larger, see Sect. 2.4).

For all experiments, the model output frequency is 2 h to ensure a close solar zenith angle match with the GOME data. All the experiments included a one year spin-up run.

### 3 Satellite tropospheric BrO retrieval

The Global Ozone Monitoring Experiment (GOME) (Burrows et al., 1999) is a remote-sensing instrument observing the sunlight backscattered from the earth in nadir viewing geometry. Launched in April 1995 aboard the ERS-2 platform, GOME is an ultraviolet/visible spectrometer measuring in the spectral interval from 240 to 793 nm with a spectral resolution of 0.2 to 0.4 nm. The GOME pixel size is about 320×40 km<sup>2</sup> and global coverage is achieved within three days.

In the framework of the ESA TEMIS project (<http://www.temis.nl>), a tropospheric BrO column product has been developed based on GOME measurements (data is available from the authors on request). The tropospheric BrO columns are retrieved in three steps. First, the BrO absorption is determined from the measured calibrated radiances using the DOAS method in the wavelength interval from 344.7 to 359 nm (Van Roozendaal et al., 2002). In a second step, the stratospheric component of the signal is removed by subtracting the stratospheric BrO column, calculated using a stratospheric BrO climatology. The stratospheric BrO correction is based on a dynamical climatology generated from the BASCOE 3D chemical transport model (Theys et al., 2009). This climatology explicitly accounts for the impact of atmospheric dynamics and photochemistry on the stratospheric BrO distribution. In the last step, the tropospheric

## Snow-sourced bromine and its implications for polar tropospheric ozone

Xin Yang et al.

Title Page

Abstract

Introduction

Conclusions

References

Tables

Figures

⏪

⏩

◀

▶

Back

Close

Full Screen / Esc

Printer-friendly Version

Interactive Discussion

---

## Snow-sourced bromine and its implications for polar tropospheric ozone

Xin Yang et al.

---

Title Page

Abstract

Introduction

Conclusions

References

Tables

Figures

⏪

⏩

◀

▶

Back

Close

Full Screen / Esc

Printer-friendly Version

Interactive Discussion



residual is converted to a tropospheric vertical column by applying an air mass factor to account for the vertical sensitivity of the measurement. In this air mass factor calculation, a priori information is needed on the surface albedo (Koelemeijer et al., 2003), the clouds (Koelemeijer et al., 2001) (a cloud screening removes the measurements with a cloud fraction larger than 0.4) and the shape of the vertical distribution of tropospheric BrO. The latter profile shape is however largely unknown in the troposphere. For bright surfaces (snow-ice cover), the air mass factor is weakly dependent on the shape of the profile and a constant concentration profile in the first kilometre has been chosen. Over dark surfaces (such as oceans), the measurement sensitivity is strongly reduced in the boundary layer and we have assumed the tropospheric BrO profile to have only a contribution in the free-troposphere (with a bulk located at 6 km altitude). As a consequence, the resulting tropospheric BrO columns there will underestimate any BrO amount present in the boundary layer.

The total error on the tropospheric BrO columns is estimated to be about  $1-2 \times 10^{13}$  molecules/cm<sup>2</sup>, when all sources of uncertainties in the retrieval are taken into account.

## 4 Results and analysis

Figure 1 shows a large-scale comparison between the model tropospheric BrO (from both the BASE and OCEAN runs) and the tropospheric BrO retrieved from the GOME satellite instrument (as described in Sect. 3), for March and September 1998, respectively, covering Boreal and Austral spring time. Figure 1 shows that our model successfully captures the main features of the distribution of satellite-based tropospheric BrO in polar region only if the snow-sourced bromine is included. For example, the highest BrO in the North American sector, along the coast of the Arctic ocean, and the “ring-like” BrO structure around Antarctic are both well reproduced in the BASE run but are not seen in the OCEAN run. Simulated monthly mean daytime tropospheric column BrO ranges from  $<0.5 \times 10^{13}$  molecules/cm<sup>2</sup> in the tropics, where sources are weak

and removal of inorganic bromine is strong, to  $>4 \times 10^{13}$  molecules/cm<sup>2</sup> over polar sea ice, mainly reflecting the blowing-snow source. Compared with retrieved data, modeled tropospheric BrO is in general lower by  $\sim 1 \times 10^{13}$  molecules/cm<sup>2</sup>, but qualitative agreement between modeled and retrieved tropospheric BrO is good in polar spring.

In marginal regions between sea ice and the open ocean, such as over the Southern Ocean and the North Atlantic ocean where strong surface winds are frequently observed, the simulated tropospheric BrO is larger than the retrieved BrO. Although the model may overestimate ocean sea salt/Br production in high latitudes under particular conditions (such as lower water temperature, affecting sea salt production (Mårtensson et al., 2003), higher ambient air relative humidity RH (>80%), affecting particle size and lifetime (Smith et al., 1993), and lower ambient air acidity, affecting bromine release (Ayers et al., 1999)), the satellite sensor also possibly underestimates marine boundary layer BrO over such dark surfaces. Over high latitudes in North America, the modeled BrO is lower than the retrieved BrO in March 1998. However, we have conducted multi-year simulations which show that elevated BrO, similar to the retrieved BrO, can also be predicted (e.g. in 1997 as shown in Fig. 2).

There is also a discrepancy between model and observations in the tropics (see Fig. 1), where simulated tropospheric BrO is generally lower than the retrieved value. Lowest BrO is found over tropical land areas and in areas with strong precipitation, such as over Maritime Continent in September where wet deposition plays an important role in wash-out inorganic bromine species. Discrepancies in the tropics, of course, are not related to our modeled polar emissions but do possibly point to problems with our open ocean sea salt or halocarbon emissions. However we should also note that the tropical region is the place where the retrieval error is quite large because of the weaker signals there and large errors in the air mass factor (AMF).

Turning from regional to local scales, Fig. 3 shows a detailed comparison between model and satellite-based results (both the GOME total column and the retrieved tropospheric column) for comparable solar zenith angles (SZA) at Barrow (73° N, 157° W) in 1998. Model and retrieved tropospheric BrO correlate significantly ( $r^2 = 0.63$ ) at

## Snow-sourced bromine and its implications for polar tropospheric ozone

Xin Yang et al.

Title Page

Abstract

Introduction

Conclusions

References

Tables

Figures

⏪

⏩

◀

▶

Back

Close

Full Screen / Esc

Printer-friendly Version

Interactive Discussion

Barrow where frequent BEs are observed. Comparison with GOME data shows that the model successfully reproduces the bromine explosion event during Julian days 80–90, but not for Julian days 71–79. One reason why the model fails to reproduce all the observed events could be that the model surface wind, at the coarse model horizontal resolution of  $5.6^\circ$ , is often below the blowing snow threshold wind speed ( $\sim 7$  m/s, see Yang et al. (2008)) while local observed wind speeds at Barrow exceed it. Nevertheless, it is clear that inclusion of the snow source leads to a considerable qualitative improvement in the model performance; modeled BrO is significantly higher and BEs are reproduced.

Further comparisons with retrieved tropospheric BrO at different sites are shown in Fig. 4. Significant correlation is seen at all the Arctic sites (we define the relationship as significant, if  $r^2 > 0.1$ , at a probability level of  $p = 0.01$ , meaning a 99% probability of making a correct statement, with number of degrees of freedom  $> 100$ ). In the Southern Hemisphere, significant correlation is also seen over hotspots such as the Weddell and the Ross seas (Fig. 4g, h) where BrO are elevated, but for inland sites (Fig. 4e, f) where no snow-source applies (recall that only sea ice constitutes a bromine source), the correlation is poor. Noteworthy are several short-term BE episodes that are consistently captured by both measurement and model results. In all cases, we see that the elevated BrO in polar spring cannot be simulated without including the blowing-snow source of bromine. Note that in polar regions, extremely high tropospheric BrO ( $> 10 \times 10^{13}$  molecules/cm<sup>2</sup>) can be simulated during some very windy days which is somewhat unrealistic indicating that bromine release could be non-linear with fresh sea salt (alkalinity) production. For example, higher fresh sea salt supply e.g. over the Southern Ocean, results in lower sea salt acidity or higher pH (Kerkweg et al., 2008), and thus could lower bromine release there (Breider et al., 2010).

The differences in modeled tropospheric column BrO between BASE run and OCEAN run as shown in Figs. 3 and 4 clearly show the contribution to polar bromine from the blowing snow. It can be seen that the blowing-snow source leads to a significant increase in BrO in spring and a modest increase in autumn. The good agreement

---

## Snow-sourced bromine and its implications for polar tropospheric ozone

Xin Yang et al.

---

[Title Page](#)[Abstract](#)[Introduction](#)[Conclusions](#)[References](#)[Tables](#)[Figures](#)[⏪](#)[⏩](#)[◀](#)[▶](#)[Back](#)[Close](#)[Full Screen / Esc](#)[Printer-friendly Version](#)[Interactive Discussion](#)

between model and observations over regions with elevated BrO, especially in the Arctic where blowing-snow is the major source, suggests that the blowing-snow-bromine may be properly parameterized relative to the sea salt source from the open ocean. When the heterogeneous Reactions (R1)–(R3) are excluded, BrO is only 30% of the BASE run value indicating the important role of heterogeneous reactivation in sustaining a high fraction of radical bromine (BrO + Br) in total gas phase inorganic bromine. When heterogeneous reactions are included, the mid-day BrO accounts for almost 50% of total inorganic bromine in the boundary layer.

Figure 5a, b shows the zonal mean daily averaged BrO in March and September of 1998. In the polar boundary layer, the spring daily mean BrO is 1–2 pptv, which is consistent with recent in situ measurements in the Antarctic (Saiz-Lopez et al., 2007). In the Arctic spring, highest BrO is confined to the lower troposphere whereas high BrO is found throughout the troposphere over Antarctica (and much is of oceanic origin). During polar autumn, the daily mean value drops significantly, but in the SH, the autumn daily BrO is still greater than 0.5 pptv, and is significantly larger than the Arctic level of ~0.2 pptv, reflecting the larger sea salt production rate from the Southern Ocean.

During polar spring, the snow source plays a dominant role. 70–80% of the Arctic tropospheric BrO is from the snow source, while in the SH, this figure drops to 50–60% (Fig. 6). In autumn this source only contributes a few percent, with contributions locally larger than 10%. Due to transport effects, a significant contribution from the springtime snow source can be found in mid-latitudes and over the Antarctic continent.

We have modeled complete removal of ozone locally during intense BEs; however, most of the time in our integration, mixing within the model boundary layer brings ozone to the surface maintaining concentrations of order 10 ppbv (Fig. 7). Here, we focus on the impact on modelled zonal mean ozone. Comparing the BASE run with the OCEAN run to determine the net effect of the snow source, we see an important contribution throughout the high latitude troposphere where a monthly mean ozone difference of up to 8% is obtained (Fig. 5c, d). This ozone difference reflects ozone loss just due to blowing snow events and is in addition to ozone losses caused by bromine emitted from

---

## Snow-sourced bromine and its implications for polar tropospheric ozone

Xin Yang et al.

---

Title Page

Abstract

Introduction

Conclusions

References

Tables

Figures



Back

Close

Full Screen / Esc

Printer-friendly Version

Interactive Discussion

the open ocean sea salt and released from bromocarbons. Comparing the BASE run with the noBr run, we find that the bromine chemistry in the troposphere reduces mean tropospheric ozone amounts by 5–30% (Fig. 5e, f), which is consistent with previous estimates (von Glasow et al., 2004; Yang et al., 2005). In the upper troposphere and lower stratosphere, significant ozone reductions of ~10% in the NH and ~20% in the SH are simulated.

## 5 Model sensitivities

Figure 8 shows the tropospheric BrO column in the 2XDF run (with doubled DF for snow-Br) in March and September. Compared with the BASE run, tropospheric BrO increases by 80–100% in the Arctic and 60–80% in the Antarctic, respectively. Obviously, the almost linear response to DF in the Arctic reflects the dominant snow-Br source due to the large sea ice coverage. Significant increases in BrO can also be seen in mid-latitudes attributable to long-range transport. Clearly, in the atmosphere, spatial and temporal variations in DF could have a significant impact on the observed BrO distribution. In a recent application of the model to the tropical Atlantic (O'Brien et al., 2009), the model failed to reproduce the high BrO (2–3 ppbv) observed there, which could be partly explained by the low DF used in the model, as recent observation indicates that the sea salt bromine near Cape Verde is heavily depleted (Müller et al., 2010). It is clearly necessary to work towards including a detailed sea salt microphysical-chemical module to study bromine chemistry at the global scale.

In the Arctic1X run, the Arctic snow salinity was reduced by a factor of 3.5. Compared with the BASE run, tropospheric BrO in the Arctic is reduced by up to 50%, but is still significantly elevated compared with the middle latitudes (or compared with the OCEAN run). The non-linear response to salinity can be explained (see Sect. 2.4) by the compensating increases in fine sea salt aerosols production (dry diameter < 10 µm).

### Snow-sourced bromine and its implications for polar tropospheric ozone

Xin Yang et al.

Title Page

Abstract

Introduction

Conclusions

References

Tables

Figures

⏪

⏩

◀

▶

Back

Close

Full Screen / Esc

Printer-friendly Version

Interactive Discussion

## 6 Conclusions

Our simulation shows that bromine explosions are consistent with bromine release in blowing snow events, when additional sea salt aerosols containing Br are created, leading both to the liberation of more Br<sup>-</sup> and to more rapid reactivation of gaseous HBr by heterogeneous reactivation. This blowing-suspension phenomenon can explain the bromine source during BEs reasonably well in both magnitude and duration, and heterogeneous reactions on the sea salt aerosol maintain the high BrO fraction of total inorganic bromine.

From this analysis, it is possible to predict conditions under which bromine explosion events may occur. Dry and windy conditions favor a large sublimation rate during a blowing event. If this occurs over a region with high-saline-contaminated snow, a bromine explosion is likely. Since tropospheric ozone amounts are significantly affected by this mechanism, this constitutes a potential influence of changing climatic conditions on oxidizing capacity.

Note that snow packs generally will also constitute a bromine source, but they are likely modest relative to blowing snow. Similarly, frost flowers growing on young sea ice have very high salinity, but only a small fraction can form fine sea salt with  $d_{dry} < 10\mu\text{m}$  after wind-crop. Actually, it is more likely that frost flowers affect bromine chemistry in an indirect pathway by contaminating the adjacent snow; the resultant salinity will be lower and could substantially favor fine sea salt production.

While we have demonstrated that blowing snow is a plausible mechanism by which bromine may be released into the atmosphere, it is clear that further work is required. In particular, our sensitivity experiments show that further information on both DF and snow salinity is required. As Earth System models are developed further, more detailed process-based treatments of the bromine release need to be developed.

### Snow-sourced bromine and its implications for polar tropospheric ozone

Xin Yang et al.

Title Page

Abstract

Introduction

Conclusions

References

Tables

Figures

⏪

⏩

◀

▶

Back

Close

Full Screen / Esc

Printer-friendly Version

Interactive Discussion



*Acknowledgements.* This work was supported by NCAS and NERC through the AMMA-UK project. BrO product is from BIRA-IASB and has been financially supported by the ESA DUE TEMIS project and the Belgian Science Policy Office through the Prodex program. We thank R. Kwok for supplying Arctic multi-year sea ice data. We acknowledge the National Snow and Ice Data Center (NSIDC) for the data set of DMSP SSM/I Daily and Monthly Polar Gridded Sea Ice Concentrations.

## References

- Alvarez-Aviles, L., Simpson, W. R., Douglas, T. A., Sturm, M., Perovich, D., and Domine, F.: Frost flower chemical composition during growth and its implications for aerosol production and bromine activation, *J. Geophys. Res.*, 113, D21304, doi:10.1029/2008JD010277, 2008.
- Ayers, G. P., Gillett, R. W., Cainey, J. M., and Dick, A. L.: Chloride and bromide loss from sea-salt particles in Southern Ocean air, *J. Atmos. Chem.*, 33, 299–319, 1999.
- Barrie, L. A., Bottenheim, J. W., Schnell, R. C., Crutzen, P. J., and Rasmussen, R. A.: Ozone destruction and photochemical reactions at polar in the lower Arctic atmosphere, *Nature*, 334, 138–141, 1998.
- Box, J. E., Bromwich, D. H., and Bai, L.-S.: Greenland ice sheet surface mass balance 1991–2000: Application of Polar MM5 mesoscale model and in situ data, *J. Geophys. Res.*, 109, D16105, doi:10.1029/2003JD004451, 2004.
- Breider, T., Chipperfield, M. P., Richards, N. A. D., Carslaw, K. S., Mann, G. W., and Spracklen, D. V.: The impact of BrO on dimethylsulfide in the remote marine boundary layer, *Geophys. Res. Lett.*, 37, L02807, doi:10.1029/2009GL040868, 2010.
- Burrows, J. P., Weber, M., Buchwitz, M., Rozanov, V., Ladstatter-Weissenmayer, A. Richter, A., De Beek, R., Hoogen, R., Bramstedt, K., Eichmann, K. W., Eisinger, M., and Perner, D.: The Global Ozone Monitoring Experiment (GOME): Mission concept and first scientific results, *J. Atmos. Sci.*, 56, 151–175, 1999.
- Comiso, J.: DMSP SSM/I daily and monthly polar gridded sea ice concentrations, (1998), edited by: Maslanik, J. and Stroeve, J., Boulder, Colorado, USA, National Snow and Ice Data Center, Digital media, 1990 (updated 2005).
- Cook, P. A., Savage, N. H., Turquety, S., Carver, G. D., O'Connor, F. M., Heckel, A., Stewart, D., Whalley, L. K., Parker, A. E., Schlager, H., Singh, H. B., Avery, M. A., Sachse, G. W.,

## Snow-sourced bromine and its implications for polar tropospheric ozone

Xin Yang et al.

Title Page

Abstract

Introduction

Conclusions

References

Tables

Figures

⏪

⏩

◀

▶

Back

Close

Full Screen / Esc

Printer-friendly Version

Interactive Discussion



---

**Snow-sourced  
bromine and its  
implications for polar  
tropospheric ozone**Xin Yang et al.

---

[Title Page](#)[Abstract](#)[Introduction](#)[Conclusions](#)[References](#)[Tables](#)[Figures](#)[⏪](#)[⏩](#)[◀](#)[▶](#)[Back](#)[Close](#)[Full Screen / Esc](#)[Printer-friendly Version](#)[Interactive Discussion](#)

Brune, W., Richter, A., Burrows, J. P., Purvis, R., Lewis, A. C., Reeves, C. E., Monks, P. S., Levine, J. G., and Pyle, J. A.: Forest fire plumes over the North Atlantic: p-TOMCAT model simulations with aircraft and satellite measurements from the ITOP/ICARTT campaign, *J. Geophys. Res.*, 112, D10S43, doi:10.1029/2006JD007563, 2007.

5 Déry, S. J. and Yau, M. K.: A bulk blowing snow model, *Bound.-Lay. Meteorol.*, 93, 237–251, 1999.

Déry, S. J. and Yau, M. K.: Simulation of blowing snow in the Canadian Arctic using a double-moment model, *Bound.-Lay. Meteorol.*, 99, 297–316, 2001.

Déry, S. J. and Yau, M. K.: Large-scale mass balance effects of blowing snow and surface sublimation, *J. Geophys. Res.*, 107, 4679, doi:10.1029/2001JD001251, 2002.

10 Fan, S. M. and Jacob, D. J.: Surface ozone depletion in Arctic spring sustained by bromine reactions on aerosols, *Nature*, 359, 522–524, 1992.

Foster, K. L., Plastridge, R. A., Bottenheim, J. W., Shepson, P. B., Finlayson-Pitts, B. J., and Spicer, C. W.: The role of Br<sub>2</sub> and BrCl in surface ozone destruction at polar sunrise, *Science*, 291, 471–474, doi:10.1126/science.291.5503.471, 2001.

15 Hall, J. S. and Wolff, E. W.: Causes of seasonal and daily variations in aerosol sea-salt concentrations at a coastal Antarctic station, *Atmos. Environ.*, 32, 3669–3677, 1998.

Heintzenberg, J., Covert, D. S., and Van Dingenen, R.: Size distribution and chemical composition of marine aerosols: A compilation and review, *Tellus*, 52B, 1104–1122, 2000.

20 Holmes, C. D., Jacob, D. J., and Yang, X.: Global lifetime of elemental mercury against oxidation by atomic bromine in the free troposphere, *Geophys. Res. Lett.*, 33, L20808, doi:10.1029/2006GL027176, 2006.

Huffman, G. J., Adler, R. F., Morrissey, M., et al.: Global precipitation at one-degree daily resolution from multi-satellite observations, *J. Hydrometeorol.*, 2, 36–50, 2001.

25 Koelmeijer, R. B. A., Stammes, P., Hovenier, J. W., and de Haan, J. F.: A fast method for retrieval of cloud parameters using oxygen A band measurements from the Global Ozone Monitoring Experiment, *J. Geophys. Res.*, 106(D4), 3475–3490, 2001.

Koelmeijer, R. B. A., de Haan, J. F., and Stammes, P.: A database of spectral surface reflectivity in the range 335–772 nm derived from 5.5 years of GOME observations, *J. Geophys. Res.*, 108(D2), 4070, doi:10.1029/2002JD002429, 2003.

30 Kwok, R.: Annual cycles of multiyear sea ice coverage of the Arctic Ocean: 1999–2003, *J. Geophys. Res.*, 109, C11004, doi:10.1029/2003JC002238, 2004.

Jones, A. E., Anderson, P. S., Begoin, M., Brough, N., Hutterli, M. A., Marshall, G. J., Richter,

**Snow-sourced  
bromine and its  
implications for polar  
tropospheric ozone**

Xin Yang et al.

[Title Page](#)[Abstract](#)[Introduction](#)[Conclusions](#)[References](#)[Tables](#)[Figures](#)[⏪](#)[⏩](#)[◀](#)[▶](#)[Back](#)[Close](#)[Full Screen / Esc](#)[Printer-friendly Version](#)[Interactive Discussion](#)

- A., Roscoe, H. K., and Wolff, E. W.: BrO, blizzards, and drivers of polar tropospheric ozone depletion events, *Atmos. Chem. Phys.*, 9, 4639–4652, 2009, <http://www.atmos-chem-phys.net/9/4639/2009/>.
- 5 Mårtensson, E. M., Nilsson, E. D., de Leeuw, G. Cohen, L. H., and Hansson, H.-C.: Laboratory simulations and parameterization of the primary marine aerosol production, *J. Geophys. Res.*, 108(D9), 4297, doi:10.1029/2002JD002263, 2003.
- Massom, R. A., Eicken, H., Haas, C., Jeffries, M. O., Drinkwater, M. R., Sturm, M., Worby, A. P., Wu, X., Lytle, V. I., Ushio, S., Morris, K., Reid, P. A., Warren, S., and Allison, I.: Snow on Antarctic sea ice, *Rev. Geophys.*, 39, 413–445, 2001.
- 10 McConnell, J., Henderson, G., Barrie, L., Bottenheim, J., Niki, H., and Templeton, E.: Photochemical bromine production implicated in Arctic boundary-layer ozone depletion, *Nature*, 355, 150–152, 1992.
- Müller, K., Lehmann, S., van Pinxteren, D., Gnauk, T., Niedermeier, N., Wiedensohler, A., and Herrmann, H.: Particle characterization at the Cape Verde atmospheric observatory during the 2007 RHaMBLe intensive, *Atmos. Chem. Phys.*, 10, 2709–2721, 2010, <http://www.atmos-chem-phys.net/10/2709/2010/>.
- 15 O'Brien, L. M., Harris, N. R. P., Robinson, A. D., Gostlow, B., Warwick, N., Yang, X., and Pyle, J. A.: Bromocarbons in the tropical marine boundary layer at the Cape Verde Observatory measurements and modelling, *Atmos. Chem. Phys.*, 9, 9083–9099, 2009, <http://www.atmos-chem-phys.net/9/9083/2009/>.
- 20 O'Connor, F. M., Carver, G. D., Savage, N. H., Pyle, J. A., Methven, J., Arnold, S. R., Dewey, K., and Kent, J.: Comparison and visualisation of high-resolution transport modeling with aircraft measurements, *Atmos. Sci. Lett.*, 6, 164–170, doi:10.1002/asl.111, 2005.
- Rankin, A. M., Wolff, E. W., and Martin, S.: Frost flowers: implications for tropospheric chemistry and ice core interpretation, *J. Geophys. Res.*, 107, 4683, doi:10.1029/2002JD002492, 2002.
- 25 Salawitch, R. J., Weisenstein, D. K., Kovalenko, L. J., Sioris, C. E., Wennberg, P. O., Chance, K., Ko, M. K. W., and McLinden, C. A.: Sensitivity of ozone to bromine in the lower stratosphere, *Geophys. Res. Lett.*, 32, L05811, doi:10.1029/2004GL021504, 2005.
- 30 Saiz-Lopez, A., Mahajan, A. S., Salmon, R. A., Bauguitte, S. J.-B, Jones, A. E., Roscoe, H. K., and Plane, J. M. C.: Boundary Layer Halogens in Coastal Antarctica, *Science*, 317, 348–351, 2007.
- Sander, R., Keene, W. C., Pszenny, A. A. P., Arimoto, R., Ayers, G. P., Baboukas, E., Cainey, J.

M., Crutzen, P. J., Duce, R. A., Hönninger, G., Huebert, B. J., Maenhaut, W., Mihalopoulos, N., Turekian, V. C., and Van Dingenen, R.: Inorganic bromine in the marine boundary layer: a critical review, *Atmos. Chem. Phys.*, 3, 1301–1336, 2003, <http://www.atmos-chem-phys.net/3/1301/2003/>.

5 Sander, R., Burrows, J., and Kaleschke, L.: Carbonate precipitation in brine – a potential trigger for tropospheric ozone depletion events, *Atmos. Chem. Phys.*, 6, 4653–4658, 2006, <http://www.atmos-chem-phys.net/6/4653/2006/>.

Savage, N. H., Law, K. S., Pyle, J. A., Richter, A., Nüß, H., and Burrows, J. P.: Using GOME NO<sub>2</sub> satellite data to examine regional differences in TOMCAT model performance, *Atmos. Chem. Phys.*, 4, 1895–1912, 2004, <http://www.atmos-chem-phys.net/4/1895/2004/>.

Schmidt, R. A.: Vertical profiles of wind speed, snow concentration, and humidity in blowing snow, *Bound.-Lay. Meteorol.*, 23, 223–246, 1982.

15 Schröder, F., Kärcher, B., Fiebig, M., and Petzold, A.: Aerosol states in the free troposphere at northern midlatitudes, *J. Geophys. Res.*, 107, 8126, doi:10.1029/2000JD000194, 2002.

Seigneur, C. and Lohman, K.: Effect of bromine chemistry on the atmospheric mercury cycle, *J. Geophys. Res.*, 113, D23309, doi:10.1029/2008JD010262, 2008.

20 Simpson, W. R., Alvarez-Aviles, L., Douglas, T. A., Sturm, M., and Domine, F. Halogens in the coastal snow pack near Barrow, Alaska: Evidence for active bromine air-snow chemistry during springtime, *Geophys. Res. Lett.*, 32, L04811, doi:10.1029/2004GL021748, 2005.

Simpson, W. R., Carlson, D., Hnninger, G., Douglas, T. A., Sturm, M., Perovich, D., and Platt, U.: First-year sea-ice contact predicts bromine monoxide (BrO) levels at Barrow, Alaska better than potential frost flower contact, *Atmos. Chem. Phys.*, 7, 621–627, 2007, <http://www.atmos-chem-phys.net/7/621/2007/>.

25 Smith, M. H., Park, P. M., and Consterdine, I. E.: Marine aerosol concentrations and estimated fluxes over the sea, *Qu. J. Roy. Meteor. Soc.*, 119, 809–824, 1993.

They, N., Van Roozendaal, M., Errera, Q., Hendrick, F., Daerden, F., Chabrilat, S., Dorf, M., Pfeilsticker, K., Rozanov, A., Lotz, W., Burrows, J. P., Lambert, J.-C., Goutail, F., Roscoe, H. K., and De Mazière, M.: A global stratospheric bromine monoxide climatology based on the BASCOE chemical transport model, *Atmos. Chem. Phys.*, 9, 831–848, 2009, <http://www.atmos-chem-phys.net/9/831/2009/>.

30 Van Roozendaal, M., Wagner, T., Richter, A., Pundt, I., Arlander, D., et al.: Intercomparison of BrO measurements from ERS-2 GOME, ground-based and balloon platforms, *Adv. Space*

---

## Snow-sourced bromine and its implications for polar tropospheric ozone

Xin Yang et al.

---

[Title Page](#)[Abstract](#)[Introduction](#)[Conclusions](#)[References](#)[Tables](#)[Figures](#)[⏪](#)[⏩](#)[◀](#)[▶](#)[Back](#)[Close](#)[Full Screen / Esc](#)[Printer-friendly Version](#)[Interactive Discussion](#)

Res., 29, 1661–1666, 2002.

Voulgarakis, A., Yang, X., and Pyle, J. A.: How different would tropospheric oxidation be over an ice-free Arctic?, *Geophys. Res. Lett.*, 36, L23807, doi:10.1029/2009GL040541, 2009.

von Glasow, R., von Kuhlmann, R., Lawrence, M. G., Platt, U., and Crutzen, P. J.: Impact of reactive bromine chemistry in the troposphere, *Atmos. Chem. Phys.*, 4, 2481–2497, 2004, <http://www.atmos-chem-phys.net/4/2481/2004/>.

von Glasow, R. and Crutzen, P. J.: Model study of multiphase DMS oxidation with a focus on halogens, *Atmos. Chem. Phys.*, 4, 589–608, 2004, <http://www.atmos-chem-phys.net/4/589/2004/>.

Wang, K. Y., Pyle, J. A., Sandersen, M. G., and Bridgeman, C.: Implimentation of a convective atmospheric boundary layer scheme in a tropospheric chemistry transport model, *J. Geophys. Res.*, 104, 23729–23745, 1999.

Warwick, N. J., Pyle, J. A., Carver, G. D., Yang, X., Savage, N. H., O'Connor, F. M., and Cox, R. A.: Global modeling of biogenic bromocarbons, *J. Geophys. Res.*, 111, D24305, doi:10.1029/2006JD007264, 2006.

Wessel, S., Aoki, S., Winkler, P., et al.: Tropospheric ozone depletion events in polar regions: A comparison of observations in the Arctic and Antarctic, *Tellus*, 50B, 34–50, 1998.

World Meteorological Organization (WMO): Global ozone research and monitoring project, in: Scientific Assessment of Ozone Depletion: 2002, Rep. 47, Geneva, 2003.

Yang, X., Cox, R. A., Warwick, N. J., Pyle, J. A., Carver, G. D., O'Connor, F. M., and Savage, N. H.: Tropospheric bromine chemistry and its impacts on ozone: A model study, *J. Geophys. Res.*, 110, D23311, doi:10.1029/2005JD006244, 2005.

Yang, X., Pyle, J. A., and Cox, R. A., Sea salt aerosol production and bromine release: Role of snow on sea ice, *Geophys. Res. Lett.*, 35, L16815, doi:10.1029/2008GL034536, 2008.

**Snow-sourced  
bromine and its  
implications for polar  
tropospheric ozone**

Xin Yang et al.

Title Page

Abstract

Introduction

Conclusions

References

Tables

Figures

⏪

⏩

◀

▶

Back

Close

Full Screen / Esc

Printer-friendly Version

Interactive Discussion

## Snow-sourced bromine and its implications for polar tropospheric ozone

Xin Yang et al.

[Title Page](#)
[Abstract](#)
[Introduction](#)
[Conclusions](#)
[References](#)
[Tables](#)
[Figures](#)




[Back](#)
[Close](#)
[Full Screen / Esc](#)
[Printer-friendly Version](#)
[Interactive Discussion](#)

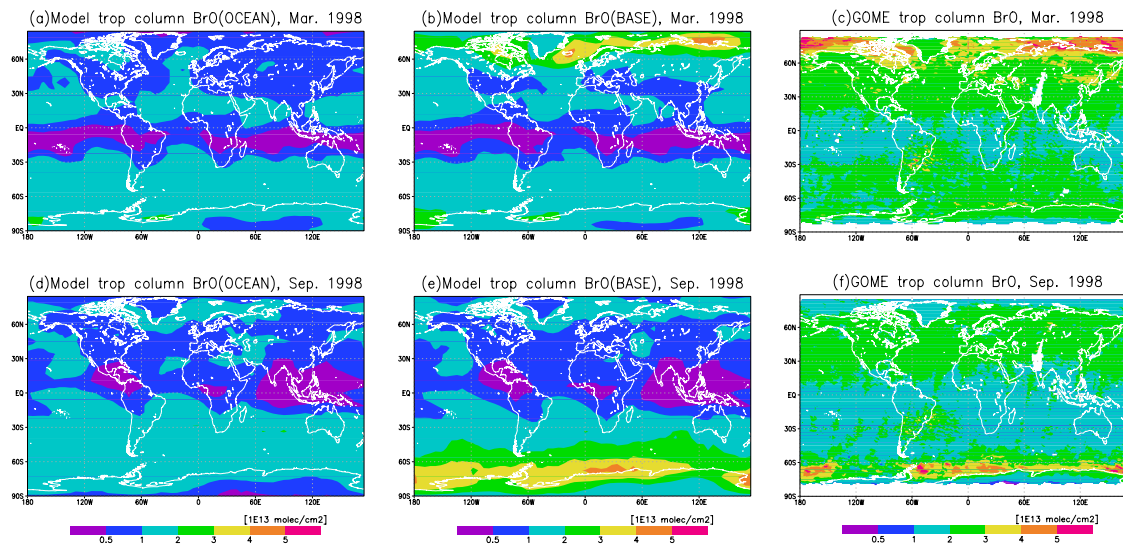
**Table 1.** Model experiments.

Experiments	Brief descriptions
BASE	Includes bromine sources from blowing snow sea salt, open ocean sea salt and bromocarbons
OCEAN	Includes only bromine sources from open ocean sea salt and bromocarbons
noHET	Same as BASE run, but with heterogeneous Reactions (R1)–(R3) switched off
noBr	All bromine chemistry switched off
2XDF	Same as BASE, but with doubled DF for blowing-snow sea salt
Arctic1X	Same as BASE, but in Arctic, the snow salinity on young sea ice is set to the same as in the Antarctic

All experiments include a one-year model spin-up run. The second year results are used for analysis.

## Snow-sourced bromine and its implications for polar tropospheric ozone

Xin Yang et al.



**Fig. 1.** Comparisons of simulated tropospheric column BrO from OCEAN run (**a, d**) and BASE run (**b, e**) and retrieved tropospheric column BrO (**c, f**) in March and September of year 1998, respectively. Note that the model data represent BrO during daytime (local 9 a.m.–3 p.m.). The unit of column BrO is  $1 \times 10^{13}$  molecules/cm<sup>2</sup>.

Title Page

Abstract

Introduction

Conclusions

References

Tables

Figures

◀

▶

◀

▶

Back

Close

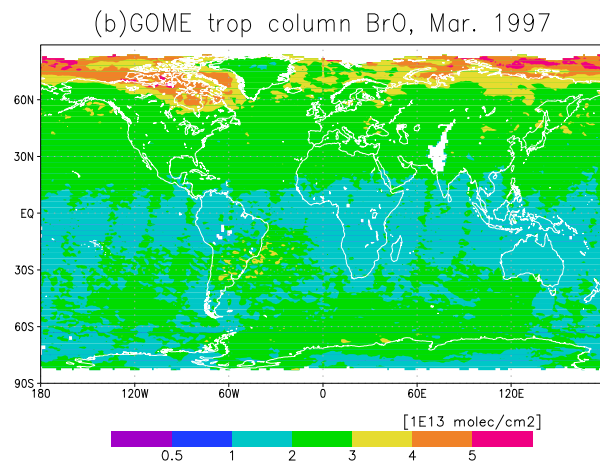
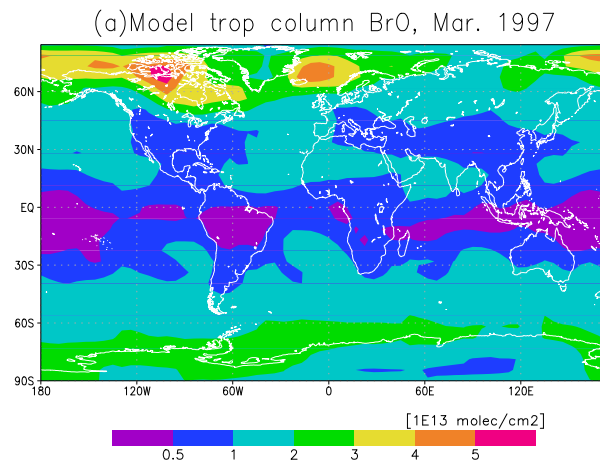
Full Screen / Esc

Printer-friendly Version

Interactive Discussion

## Snow-sourced bromine and its implications for polar tropospheric ozone

Xin Yang et al.

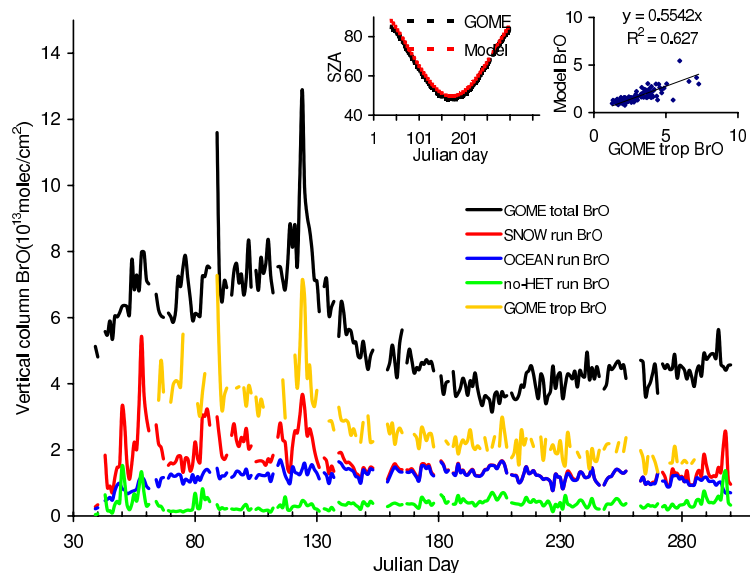


**Fig. 2.** Comparisons of BASE run (a) and retrieved (b) tropospheric column BrO in March of 1997.

[Title Page](#)[Abstract](#)[Introduction](#)[Conclusions](#)[References](#)[Tables](#)[Figures](#)[◀](#)[▶](#)[◀](#)[▶](#)[Back](#)[Close](#)[Full Screen / Esc](#)[Printer-friendly Version](#)[Interactive Discussion](#)

## Snow-sourced bromine and its implications for polar tropospheric ozone

Xin Yang et al.



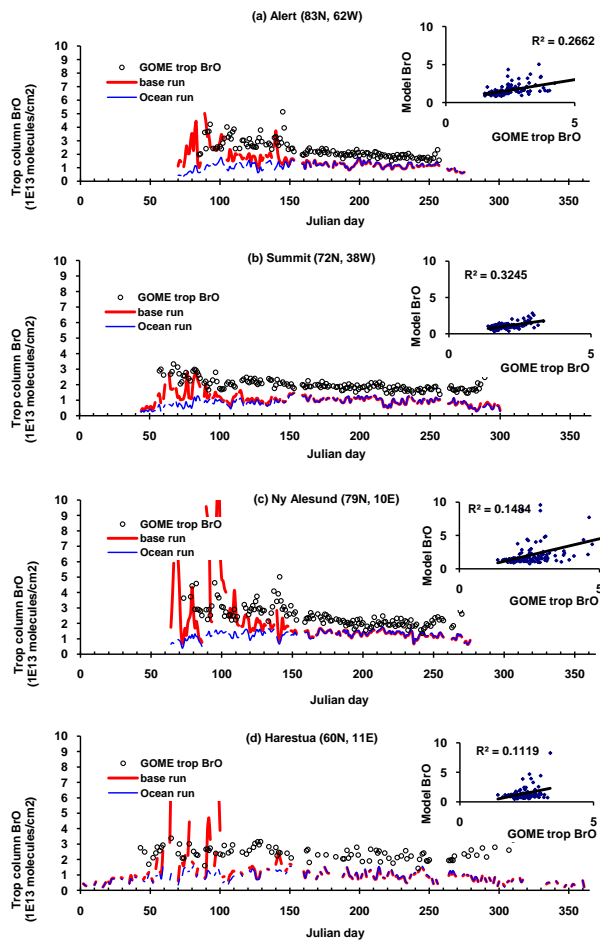
**Fig. 3.** Comparisons of modeled tropospheric column BrO (red) with GOME total vertical column BrO (black) and retrieved tropospheric BrO (yellow) over Barrow ( $73^\circ$  N,  $157^\circ$  W) for year 1998. The model experiments, the OCEAN and noHET runs, are shown in blue and green lines, respectively. The inset plot (left) shows solar zenith angle (SZ) of the model output (red) and satellite observation (black); the inset plot (right) shows the relationship and regression coefficient between retrieved and model tropospheric column BrO (BASE run).

[Title Page](#)[Abstract](#)[Introduction](#)[Conclusions](#)[References](#)[Tables](#)[Figures](#)[◀](#)[▶](#)[◀](#)[▶](#)[Back](#)[Close](#)[Full Screen / Esc](#)[Printer-friendly Version](#)[Interactive Discussion](#)



## Snow-sourced bromine and its implications for polar tropospheric ozone

Xin Yang et al.



**Fig. 4.** Comparisons of modeled and retrieved tropospheric column BrO over 8 sites in the NH and SH polar region for year 1998. The inset plot shows the relationship and regression coefficient between the retrieved and modeled tropospheric BrO. The model results are from BASE run.

Title Page

Abstract

Introduction

Conclusions

References

Tables

Figures

◀

▶

◀

▶

Back

Close

Full Screen / Esc

Printer-friendly Version

Interactive Discussion

**Snow-sourced  
bromine and its  
implications for polar  
tropospheric ozone**

Xin Yang et al.

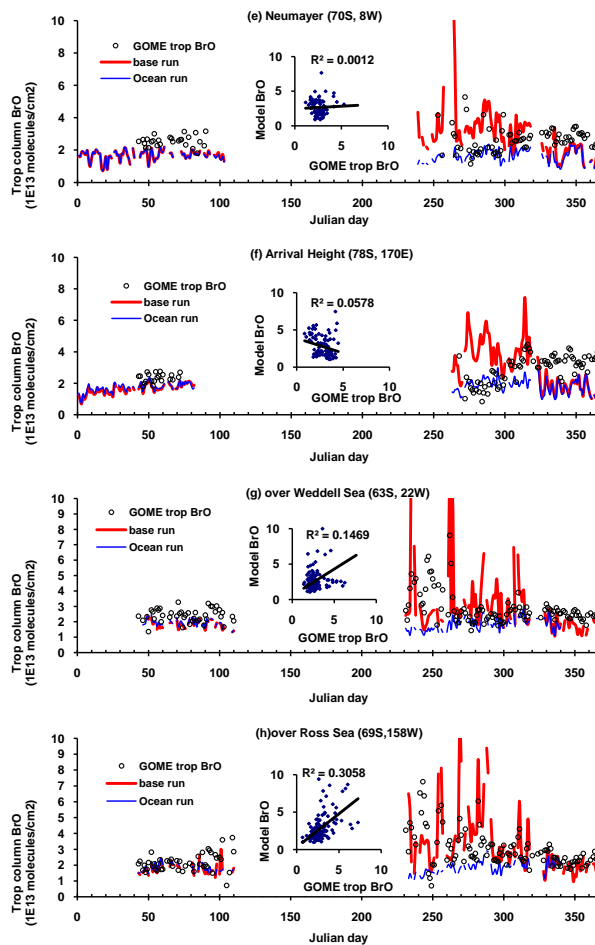
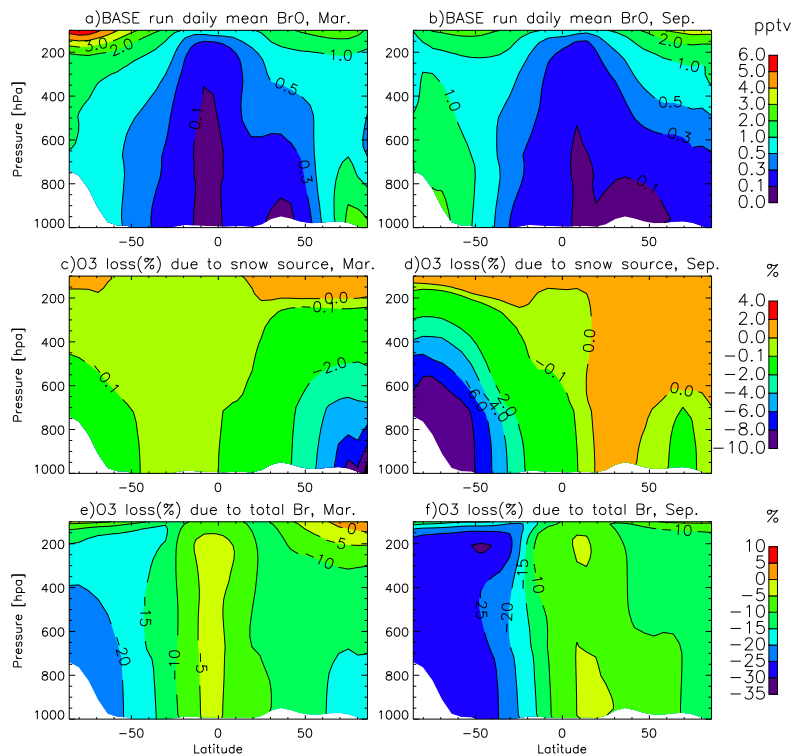


Fig. 4. Continued.

[Title Page](#)[Abstract](#)[Introduction](#)[Conclusions](#)[References](#)[Tables](#)[Figures](#)[⏪](#)[⏩](#)[◀](#)[▶](#)[Back](#)[Close](#)[Full Screen / Esc](#)[Printer-friendly Version](#)[Interactive Discussion](#)

## Snow-sourced bromine and its implications for polar tropospheric ozone

Xin Yang et al.



**Fig. 5.** Zonal mean fields of BrO and ozone loss due to bromine chemistry. Zonal daily averaged BrO (pptv) in (a) March and (b) September of 1998, from BASE run, with plotted interval of 1 pptv at BrO > 1 pptv. The calculated ozone reductions (%) due to bromine explosion (snow source) are shown in (c) and (d) (calculated according to formula:  $(\text{BASE run} - \text{OCEAN run})/(\text{BASE run}) \times 100\%$ ) with interval of 2% at ozone loss > -2%. The ozone reductions due to all bromine sources are shown in (e) and (f) by comparing BASE run with noBr run (calculated according to formula  $(\text{BASE run} - \text{noBr run})/(\text{noBr run}) \times 100\%$ ).

Title Page

Abstract

Introduction

Conclusions

References

Tables

Figures

◀

▶

◀

▶

Back

Close

Full Screen / Esc

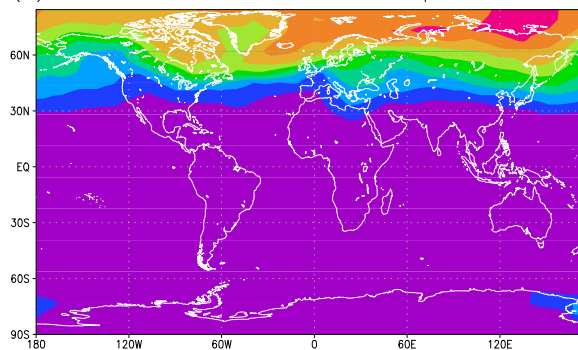
Printer-friendly Version

Interactive Discussion

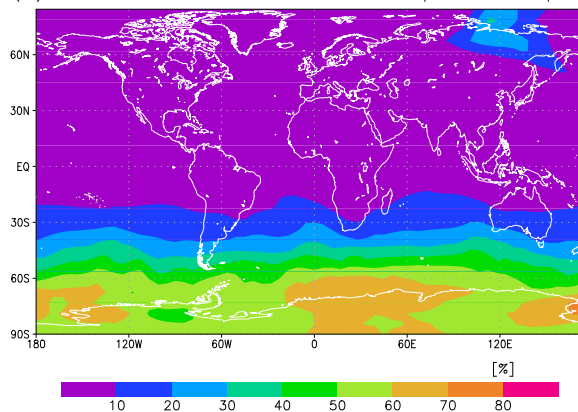
**Snow-sourced  
bromine and its  
implications for polar  
tropospheric ozone**

Xin Yang et al.

(a) Snow source contribution to trop. BrO, Mar. 98



(b) Snow source contribution to trop. BrO, Sep. 98

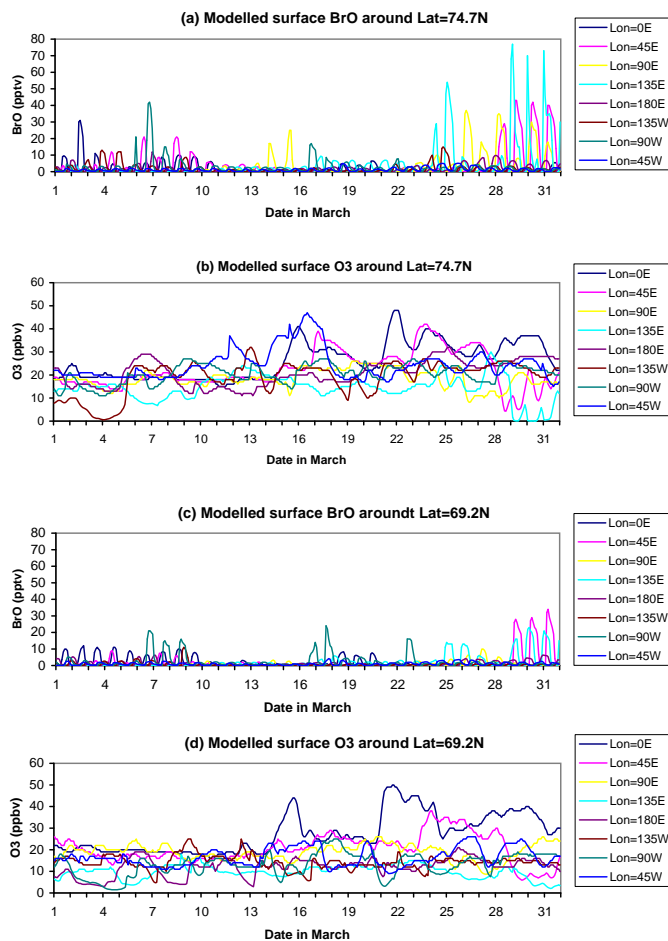


**Fig. 6.** Percentage contribution of blowing snow source to the simulated tropospheric column BrO in (a) March and (b) September of 1998. Values are calculated according to the formula:  $(\text{BASE run} - \text{OCEAN run}) / (\text{BASE run}) \times 100\%$ .

[Title Page](#)[Abstract](#)[Introduction](#)[Conclusions](#)[References](#)[Tables](#)[Figures](#)[◀](#)[▶](#)[◀](#)[▶](#)[Back](#)[Close](#)[Full Screen / Esc](#)[Printer-friendly Version](#)[Interactive Discussion](#)

Snow-sourced  
bromine and its  
implications for polar  
tropospheric ozone

Xin Yang et al.

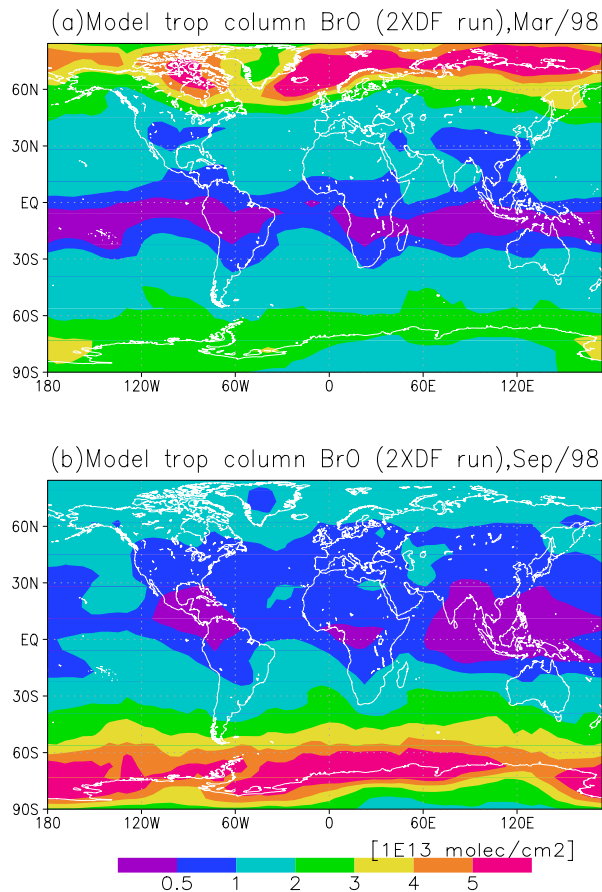


**Fig. 7.** BASE run surface BrO and ozone mixing ratios at different longitude locations along two model latitudes of 74.7° N (a, b) and 69.2° N (c, d) in March 1998.

[Title Page](#)[Abstract](#)[Introduction](#)[Conclusions](#)[References](#)[Tables](#)[Figures](#)[⏪](#)[⏩](#)[◀](#)[▶](#)[Back](#)[Close](#)[Full Screen / Esc](#)[Printer-friendly Version](#)[Interactive Discussion](#)

## Snow-sourced bromine and its implications for polar tropospheric ozone

Xin Yang et al.



**Fig. 8.** Tropospheric column BrO in March **(a)** and September **(b)** from 2XDF run. The unit of column BrO is  $1 \times 10^{13}$  molecules/cm<sup>2</sup>.

Title Page

Abstract

Introduction

Conclusions

References

Tables

Figures

◀

▶

◀

▶

Back

Close

Full Screen / Esc

Printer-friendly Version

Interactive Discussion