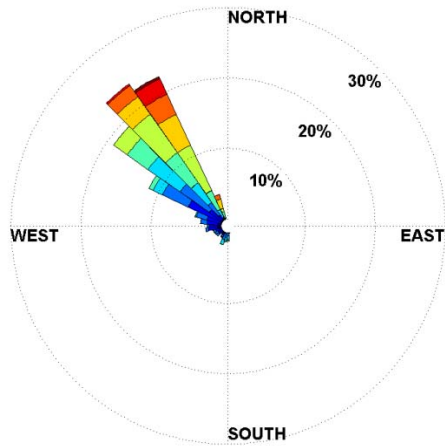
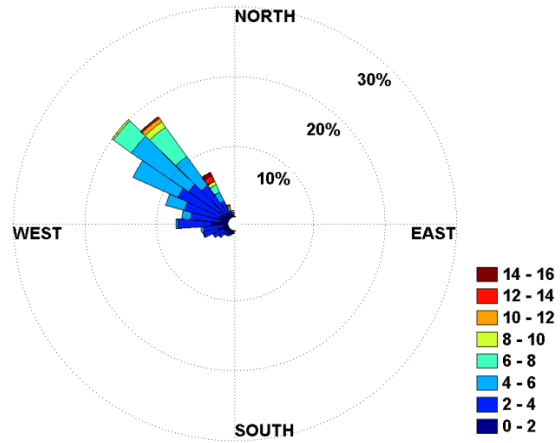


Fig. S1. Wind rose plots for wind direction (degrees) and speed (m/s) for Point Reyes, CA (a,b) and Redwood National Park, CA (c,d) for the period between 1 June and 15 July 2005 (a,c) and 16 July and 31 August 2005 (b,d).

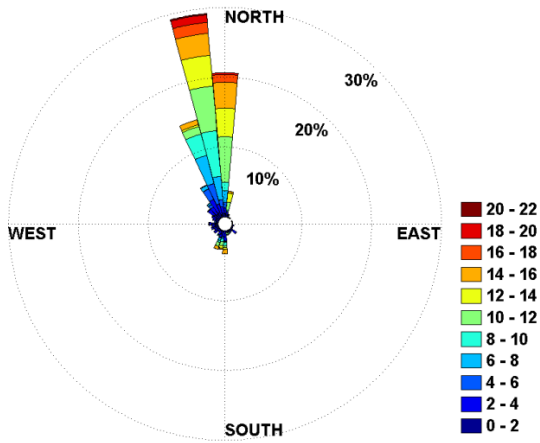
a)



b)



c)



d)

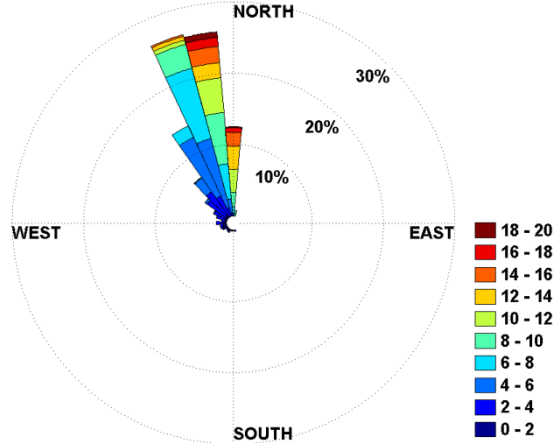
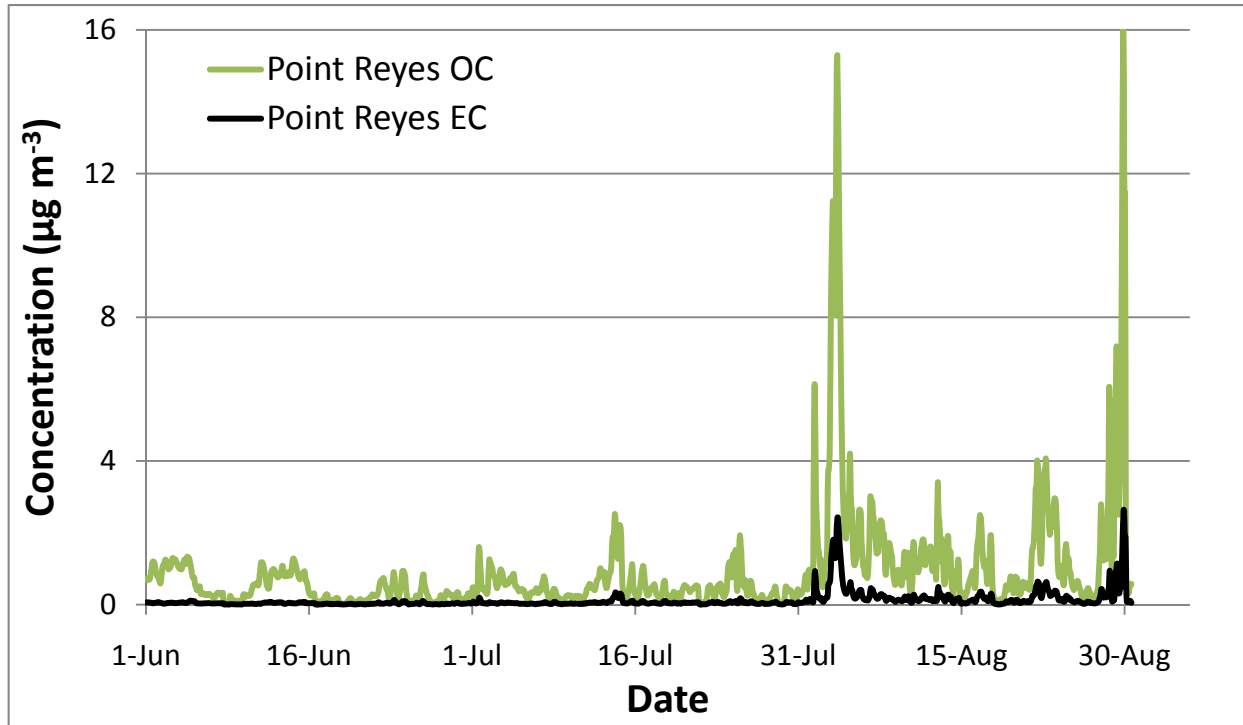


Fig. S2. Time series of model-predicted surface OC_{2.5} and EC_{2.5} for a) Point Reyes and b) Redwood National Park

a)



b)

