

This discussion paper is/has been under review for the journal Atmospheric Chemistry and Physics (ACP). Please refer to the corresponding final paper in ACP if available.

Dependence of the single-scattering properties of small ice crystals on idealized shape models

J. Um and G. M. McFarquhar

Department of Atmospheric Sciences, University of Illinois at Urbana-Champaign, Urbana, Illinois, USA

Received: 19 October 2010 – Accepted: 15 November 2010 – Published: 16 November 2010

Correspondence to: J. Um (junum@atmos.uiuc.edu)

Published by Copernicus Publications on behalf of the European Geosciences Union.

Single-scattering properties of small ice crystals

J. Um and
G. M. McFarquhar

Title Page

Abstract

Introduction

Conclusions

References

Tables

Figures

⏪

⏩

◀

▶

Back

Close

Full Screen / Esc

Printer-friendly Version

Interactive Discussion

Abstract

Small ice crystals (with maximum dimension $<50\ \mu\text{m}$) appear quasi-circular when imaged by probes on aircraft flying through cloud. Therefore, idealized models constructed to calculate their single-scattering properties have included quasi-spherical models such as Chebyshev particles, Gaussian random spheres, and droxtals. Recently, an ice analogue grown from sodium fluorosilicate solution on a glass substrate, with several columns emanating from a common center of mass, was shown to be quasi-circular when imaged by state-of-the-art cloud probes. In this study, a new idealized model, called the budding Bucky ball (3B) that resembles the shape of the small ice analogue is developed. The corresponding single-scattering properties (scattering phase function P_{11} and asymmetry parameter g) are computed by a ray-tracing code. Compared with previously used models, 3B scatters less light in the forward and more light in the lateral and backward directions. The Chebyshev particles and Gaussian random spheres show smooth and featureless P_{11} , whereas droxtals and 3Bs, which have a faceted structure, show several peaks in P_{11} associated with angles of minimum deviation. Overall, the difference in the forward (lateral; backward) scattering between models are up to 22% (994%; 132%), 20% (510%; 101%), and 16% (146%; 156%) for small ice crystals with repective area ratios of 0.85, 0.77, and 0.69. The g for different models varies by up to 25%, 23%, and 19% for particles with area ratios of 0.85, 0.77, and 0.69, respectively. Because the single-scattering properties of small ice crystals depend both on the choice of the idealized model and the area ratios used to characterize the small ice crystals, higher resolution observations of small ice crystals or direct observations of their single-scattering properties are required.

1 Introduction

Because cirrus located in the upper troposphere and lower stratosphere occur at very cold temperatures ($<-30\ ^\circ\text{C}$), they are mainly composed of ice crystals. Cirrus spatial coverage (Wylie et al., 1994), temporal frequency, microphysical (McFarquhar and

ACPD

10, 28109–28149, 2010

Single-scattering properties of small ice crystals

J. Um and
G. M. McFarquhar

Title Page

Abstract

Introduction

Conclusions

References

Tables

Figures

⏪

⏩

◀

▶

Back

Close

Full Screen / Esc

Printer-friendly Version

Interactive Discussion



Single-scattering properties of small ice crystals

J. Um and
G. M. McFarquhar

Title Page

Abstract

Introduction

Conclusions

References

Tables

Figures

⏪

⏩

◀

▶

Back

Close

Full Screen / Esc

Printer-friendly Version

Interactive Discussion



Heymsfield, 1997) and scattering properties (Hartmann et al., 1992; Zhang et al., 1999; McFarquhar et al., 2000) have large impacts on how cirrus affects radiation. Despite the importance of cirrus, its representation in small and large-scale models has large uncertainties mainly due to the wide variety of shapes and sizes of non-spherical ice crystals. Thus, its role in modulating the Earth-radiation balance has not been well established (Ramanathan et al., 1983; Liou, 1986; Baum et al., 2000).

A conventional method (McFarquhar et al., 2000) for representing the scattering properties of cirrus in numerical models is to combine measured microphysical properties (e.g., size and habit distributions) of cirrus from field campaigns and pre-calculated single-scattering libraries (e.g., scattering phase function P_{11} , asymmetry parameter g , and single-scattering albedo) of different shapes and sizes of ice crystals. This method of combining microphysical and single-scattering libraries is also used to develop satellite-based algorithms for retrieving cloud properties (Nasiri et al., 2002; Baum et al., 2007). These parameterization schemes and retrieval algorithms depend heavily on the assumed size and shape distributions and single-scattering libraries of ice crystals.

To calculate the single-scattering properties of different shapes of ice crystals, idealized models representing the shapes of real ice crystals are needed. Such models have been developed based on images of ice crystals obtained by probes installed on aircraft flying through clouds. In addition to the calculation of single-scattering properties of pristine ice crystal shapes such as hexagonal columns and plates (e.g., Takano and Liou, 1989; Macke et al., 1996) and bullet rosettes (e.g., Iaquinta et al., 1995), recent studies have extended the calculations to more complex shapes such as aggregates of columns (Yang and Liou, 1998; Baran and Labonnote, 2007), bullet rosettes (Um and McFarquhar, 2007) and plates (Um and McFarquhar, 2009) and to longer wavelengths (Baran, 2005; Yang et al., 2005). Although some earlier studies used images from optical array probes, which have 15 to 25 μm resolution, to develop the idealized models, more recent studies have used higher resolution (2.3 μm) images from a Cloud Particle Imager (CPI).

Single-scattering properties of small ice crystals

J. Um and
G. M. McFarquhar

Title Page

Abstract

Introduction

Conclusions

References

Tables

Figures



Back

Close

Full Screen / Esc

Printer-friendly Version

Interactive Discussion



Ice crystals with a maximum dimension $D < 125 \mu\text{m}$ cannot be well measured by conventional optical array probes because the limited number of photodiodes shadowed prohibits a precise depiction of their shape. Further, a small and poorly defined depth of field limits the ability to determine the small crystal concentrations (e.g., Baumgardner and Korolev, 1997), and the degree to which the shattering of large ice crystals on the tips of such probes artificially amplifies the concentrations of these crystals is unknown (Korolev et al., 2010). Thus, other probes such as the CPI, the Desert Research Institute (DRI) replicator (Arnott et al., 1994) and the Video Ice Particle Sampler (VIPS, McFarquhar and Heymsfield, 1996) have been used to characterize the shape of small ice crystals. Such observations have also indicated that small ice crystals have a quasi-circular appearance in two dimensions. Thus, it has been assumed that small ice crystals are quasi-spherical.

Corresponding idealized models used to describe the shape of small ice crystals have included spheres (McFarquhar et al., 1999), Chebyshev particles obtained by continuous deformations to a sphere using Chebyshev polynomials (McFarquhar et al., 2002), droxtals (Yang et al., 2003), and the Gaussian random sphere geometry (Nousiainen and McFarquhar, 2004). Figure 1 shows typical shapes of ice crystals with $D \sim 50 \mu\text{m}$ imaged by the CPI during the Tropical Warm Pool International Cloud Experiment (TWP-ICE). Currently used idealized models to represent the shape of small ice crystals are shown in Fig. 2. More recently, it has been shown that crystalline particles of sodium fluorosilicate Na_2SiF_6 ($D = 48 \mu\text{m}$), grown from solution on glass substrates, appear quasi-circular when imaged by a CPI (Fig. 3, Ulanowski et al., 2004). Unlike droxtals, Gaussian random spheres, or Chebyshev particles, these crystalline particles, henceforth called ice analogues, show a complex structure of several columns originating from a common center of mass when imaged by a scanning electron microscope with a resolution as low as 1 to 20 nm. In fact, the crystals of sodium fluorosilicate show morphologies similar to those of large ice crystals (e.g., columns, plates, and bullet rosettes). High-resolution microscopic images of small ice crystals grown in a laboratory have also revealed that 5 to 10 μm crystals have facets

Single-scattering properties of small ice crystals

J. Um and
G. M. McFarquhar

Title Page

Abstract

Introduction

Conclusions

References

Tables

Figures



Back

Close

Full Screen / Esc

Printer-friendly Version

Interactive Discussion

and that ice crystals larger than 10 μm are budding rosettes (Bailey and Hallett, 2009). Because the refractive index of ice and sodium fluorosilicate are very close, similar single-scattering properties, such as halos, are generated when lights interacts with them (Ulanowski et al., 2003; Ulanowski et al., 2006).

5 There is a significant discrepancy in the shapes of the different idealized models (McFarquhar et al., 2002; Yang et al., 2003; Nousiainen and McFarquhar, 2004) that have been used to describe small ice crystals and the small ice analogues. Since the single-scattering properties of ice crystals depend heavily on shape, it is necessary to determine appropriate models for small ice crystals and their corresponding single-
10 scattering properties.

It is difficult to identify the detailed shapes of small ice crystals using state-of-the-art cloud probes because the probe resolutions are insufficient to resolve the fine structure of the crystals. In addition, there are few studies on the growth mechanisms for small ice crystals. Field et al. (2006) and McFarquhar et al. (2007, 2010) have recently
15 suggested that the shattering of large ice crystals on the inlets or shrouds of some probes may artificially generate small ice crystals that are in turn measured. Thus, caution must be applied to verify that the small ice crystal images represent naturally occurring crystals rather than remnants of shattered large ice crystals.

In this study, a new idealized model of small ice crystals that resembles the ice analogues is developed and the corresponding single-scattering properties are calculated at a solar wavelength of $\lambda = 0.55 \mu\text{m}$. Those single-scattering properties are then compared with those of other models previously used to characterize small ice crystals. In Sect. 2, aircraft observations are used to separate images of naturally occurring small ice crystals from those produced by the shattering of large ice crystals. Current models
20 representing the shapes of small ice crystals are summarized and an idealized geometric model that resembles the shape of small ice analogues is developed in Sect. 3. The geometrical optics method used to calculate the single-scattering properties of small ice crystals is described in Sect. 4. The dependence of the single-scattering properties of small ice crystals on shape, aspect ratio, and area ratio is calculated and compared

for all plausible small ice crystal models in Sect. 5. The importance and new findings of this study are summarized in Sect. 6.

2 Observed shapes of small ice crystals

McFarquhar et al. (2007) compared the number concentrations of ice crystals with $D < 50 \mu\text{m}$ in tropical cirrus measured by a Cloud and Aerosol Spectrometer (CAS) and a Cloud Droplet Probe (CDP) during TWP-ICE. In ice clouds, the CAS, which has a protruding shroud and inlet, measured much higher concentrations than the CDP, which has its tips farther from the sample volume. The CAS/CDP number concentration ratio was strongly correlated with the concentration of particles with $D > 100 \mu\text{m}$ measured by a Cloud Imaging Probe, suggesting that the shattering or bouncing of large ice crystals on the CAS inlet or protruding airflow shroud may have caused the difference.

The CPI, whose images form the basis of many idealized models of small ice crystals, also has protruding components on which large ice crystals may shatter. Thus, it is necessary to estimate the degree to which shattering of large ice crystals on the CPI might be contaminating images of naturally occurring small ice crystals. It is likely that the degree of contamination depends heavily on aircraft parameters such as true air speed, pitch, roll, and angle of attack and microphysical parameters such as ice crystal concentration, ice crystal habit, and cirrus mass content. Thus, careful assessment of CPI images acquired in each field campaign, and even in separate flights and components of flights, is required. For this study, data acquired during TWP-ICE are used to estimate the impact of shattering on the crystals imaged by the CPI in tropical cirrus.

The CPI acquires images of ice crystals on a CCD array when a high-power imaging laser is triggered by the detection of a particle in the field of view by two lower-powered lasers shining on photodiode detectors. There can be one or more particles in the field of view recorded on the CCD. In this study, it is hypothesized that when multiple particles are recorded on the same CCD frame, they most likely represent multiple

Single-scattering properties of small ice crystals

J. Um and
G. M. McFarquhar

Title Page

Abstract

Introduction

Conclusions

References

Tables

Figures

⏪

⏩

◀

▶

Back

Close

Full Screen / Esc

Printer-friendly Version

Interactive Discussion



particles generated by the shattering of a large particle. On the other hand, a single particle most likely represents a naturally occurring ice crystal. Among the 180,905 particles imaged by the CPI on 3 days during TWP-ICE (27 and 29 January, 2 February 2006), 178 102 (98.451%) particles were the only particles in the frame, while 2596 (1.435%), 186 (0.102%), 16 (0.009%), and 5 (0.003%) occurred in frames with 2, 3, 4, and 5 particles, respectively. This suggests that the shattering of ice crystals on the CPI during TWP-ICE was not frequent so that the quasi-circular small ice crystals in Fig. 1 likely correspond to naturally occurring ice crystals. Other instruments such as the VIPS (McFarquhar and Heymsfield, 1996) have also imaged quasi-circular small ice crystals, providing more evidence that not all measurements of small ice crystals are instrument artifacts.

3 Idealized models representing shapes of small ice crystals

3.1 Overview

Bailey and Hallet (2009) showed that ice crystals grown in the DRI fall tower were faceted or had emerging arms at sizes of 5–10 μm . Small ice crystals larger than 10 μm were also faceted and some of them had budding arms when imaged by the DRI high-resolution cloud scope. In a qualitative sense, the small ice analogue of Ulanowski et al. (2004) depicted in Fig. 3 is consistent with such crystals in that it has one center of mass from which columns emanate. Figure 2 shows models that have been previously used to represent the shapes of small ice crystals, including Chebyshev particles, Gaussian random spheres, and droxtals. These models do not have the arm structures shown in the small ice analogue and in the small ice crystals grown in the DRI fall tower. At first glance, the existing models appear closer (than the small ice analogues) to the quasi-spheres seen in the in-situ measurements (e.g., Fig. 1). But, the small ice analogues also appeared quasi-circular when imaged by a CPI (Fig. 3) and hence are also consistent with the in-situ measurements. The CPI is unable to

Single-scattering properties of small ice crystals

J. Um and
G. M. McFarquhar

Title Page

Abstract

Introduction

Conclusions

References

Tables

Figures



Back

Close

Full Screen / Esc

Printer-friendly Version

Interactive Discussion



distinguish between such different small crystal shapes because of insufficient resolution and diffraction. Therefore, a new idealized model to represent the shape of the small ice analogues and calculations of the corresponding single-scattering properties are required to determine the sensitivity of the scattering properties to the representation of shape.

In this section, the different methods used to describe the shapes of small ice crystals are explained. A new model that resembles the shapes of small ice analogues is first developed. Thereafter idealized models for small ice crystals with $D = 50 \mu\text{m}$ are generated using each of the 4 methods (i.e., Chebyshev particles, Gaussian random spheres, droxtals, and the new model). Because variations in scattering properties can be dominated by differences in particle cross-sectional areas, the models of the small ice crystals were generated so that the cross-sectional area is the same for all the different methods. For each method, 3 different ice crystal models with area ratios of 0.85, 0.77, and 0.69 were generated, where area ratio is defined as the average cross-sectional area of the particle divided by that of circumscribed circle with diameter given by the crystal maximum dimension (McFarquhar and Heymsfield, 1996), $D = 50 \mu\text{m}$. The highest area ratio of 0.85 was selected to match the maximum area ratio of droxtals, while the lowest area ratio of 0.69 corresponds to the lowest area ratio of quasi-circular ice crystals with $D < 100 \mu\text{m}$ observed by McFarquhar et al. (2002).

3.2 Chebyshev particle

Mugnai and Wiscombe (1980) and others have investigated the description of scattering caused by rotationally symmetric scatterers by means of Chebyshev particles (Fig. 2a), which are obtained by continuously deforming a sphere by means of Chebyshev polynomials. McFarquhar et al. (2002) used the tenth-order Chebyshev polynomials of Chuang and Beard (1990) that most closely matched the observed areas of ice crystals imaged in tropical cirrus to describe the shapes of small ice crystals. Thereafter, they calculated their single-scattering properties using the ray tracing method of Macke and Grossklau (1998).

Single-scattering properties of small ice crystals

J. Um and
G. M. McFarquhar

Title Page

Abstract

Introduction

Conclusions

References

Tables

Figures



Back

Close

Full Screen / Esc

Printer-friendly Version

Interactive Discussion



The geometry of a Chebyshev particle in a spherical coordinate system is represented by the 10th order cosine expansion

$$r(\theta, \phi) = r_o \left[1 + \sum_{n=0}^{10} c_n \cos(n\theta) \right], \quad (1)$$

where r_o is the radius of the unperturbed sphere and the c_n are the shape coefficients. Chuang and Beard (1990) calculated c_n to describe the shapes of raindrops with $1.0 < D < 9.0$ mm. Macke and Grossklaus (1998) and Nousiainen and Muinonen (1999) then calculated the single-scattering properties of raindrops using the Chebyshev particles with c_n from Chuang and Beard (1990). McFarquhar et al. (2002) also applied this technique to calculate the single-scattering properties of ice crystals with $D < 100$ μ m. In this paper, c_n from Chuang and Beard (1990) were used to generate the Chebyshev particles with area ratios of 0.85, 0.77, and 0.69 shown in Fig. 4, where an appropriate scaling factor was applied to r_o so that the maximum dimension is 50 μ m.

3.3 Gaussian random sphere

The Gaussian random sphere depicted in Fig. 2b was generated using a statistical shape model that computes the statistical properties of particle shapes, rather than the shapes of individual particles (Muinonen et al., 1996). This model has been used to describe shapes of asteroids (Muinonen and Lagerros, 1998), desert dust particles (Nousiainen et al., 2003), and the shapes of small ice crystals imaged by a CPI in mid-latitude cirrus (Nousiainen and McFarquhar, 2004). Nousiainen and McFarquhar (2004) also calculated the corresponding single-scattering properties of the ice crystals at $\lambda = 0.55$ μ m using ray optics.

The shape of a Gaussian random sphere is solely described by a covariance function of radius (Nousiainen and McFarquhar, 2004). In this study, three different shapes of Gaussian random sphere were constructed by varying the relative standard deviation of radius, σ , used to represent the shapes of small ice crystals. Figure 5 shows the

Single-scattering properties of small ice crystals

J. Um and
G. M. McFarquhar

Title Page

Abstract

Introduction

Conclusions

References

Tables

Figures

⏪

⏩

◀

▶

Back

Close

Full Screen / Esc

Printer-friendly Version

Interactive Discussion



Discussion Paper | Discussion Paper | Discussion Paper | Discussion Paper | Discussion Paper

geometric shapes of Gaussian random spheres of $D = 50 \mu\text{m}$ with $\sigma = 0.069, 0.110,$ and 0.179 that correspond to an area ratio of $0.85, 0.77,$ and $0.69,$ respectively. As σ increases, a Gaussian random sphere becomes more non-spherical. More details of the Gaussian random sphere are explained in Nousiainen and McFarquhar (2004).

3.4 Droxtal

Thuman and Robinson (1954) observed particles with the characteristics of both droplets and crystals in Alaskan ice fogs and named them droxtals. Ohtake (1970) also measured droxtals in ice fogs and developed a schematic drawing of them. Thereafter Yang et al. (2003) proposed an idealized model of a droxtal (see Fig. 2c) and calculated the corresponding single-scattering properties using the finite-difference time domain method (Yang et al., 2003) and geometric optics (Zhang et al., 2004) at solar and infrared λ .

A droxtal has 20 faces and all the vertices of the droxtal fall on the circumscribing sphere when the droxtal has maximum sphericity (Yang et al., 2003). The geometry of a droxtal is configured with two angles (θ_1 and θ_2) and with a radius of the circumscribing sphere. The detailed geometrical configuration of a droxtal was shown in Yang et al. (2003) and Zhang et al. (2004). The maximum area ratio that the droxtal can make is slightly above 0.85. In this study, three different shapes of droxtals with $D = 50 \mu\text{m}$ were generated (Fig. 6) by varying θ_1 and θ_2 . The area ratio of 0.85 was achieved using $\theta_1 = 32.35^\circ$ and $\theta_2 = 71.81^\circ$. The combinations, $\theta_1 = 10.00^\circ$ and $\theta_2 = 80.00^\circ$ and $\theta_1 = 1.5^\circ$ and $\theta_2 = 85.00^\circ$, generated droxtals with area ratios of 0.77 and 0.69, respectively. The droxtal with $\theta_1 = 32.35^\circ$ (Fig. 6a) is closest to a spherical particle, with the other two droxtals becoming less spherical as θ_1 decreases. The single-scattering properties of the droxtals with $\theta_1 = 32.5^\circ$ (Fig. 6a) and $\theta_1 = 1.5^\circ$ (Fig. 6c) were shown in Zhang et al. (2004).

Single-scattering properties of small ice crystals

J. Um and
G. M. McFarquhar

Title Page

Abstract

Introduction

Conclusions

References

Tables

Figures

⏪

⏩

◀

▶

Back

Close

Full Screen / Esc

Printer-friendly Version

Interactive Discussion



3.5 Budding Bucky ball (3B)

A new model for small ice crystals (henceforth called a budding Bucky ball, 3B) is proposed here. It has a core whose structure is the same as that of carbon 60 fullerene, namely like a soccer ball with 12 pentagonal and 20 hexagonal planes. From these planes, hexagonal or pentagonal columns extend vertically. Figure 7 shows a core and a possible geometrical shape of 3B. The structure of 3B is configured with a radius of core (r_{3B}), and length (L) and width (W) of the hexagonal or pentagonal columns. A maximum dimension D of a 3B is defined as $D = 2(r_{3B} + L)$. Therefore, for a given size of 3B (i.e., fixed D), L determines r_{3B} , and vice versa. Since L and W are related through an aspect ratio (L/W), once the desired D and aspect ratio are chosen, r_{3B} is automatically determined. In this paper, 3Bs with 20 regular and 12 irregular hexagonal columns (Fig. 7d) are used to represent the shapes of small ice crystals, consistent with the small ice analogue in Fig. 3 that has both regular and irregular hexagonal columns. Such irregular or imperfect hexagonal columns have been seen in both nature and in the laboratory (Bacon and Swanson, 2000). The single-scattering properties of other plausible geometrical shapes of 3B (i.e., Fig. 7a, b, and c) are also calculated and shown in Sect. 4.

For a given size of 3B (i.e., $D = 50 \mu\text{m}$), its configuration depends on the aspect ratio of the component column. There are no studies on the aspect ratio of columns on ice analogues. In this study, the aspect ratio derived by Mitchell and Arnott (1994) for columns, $W = 0.700L^{1.00}$, $L < 100 \mu\text{m}$, is used and hence the aspect ratio is 1.43. The lengths of the emanating columns were adjusted so that the 3Bs with the same area ratios as the other small crystal models were generated, but the lengths of the two columns emanating in the opposite direction were not changed so that $D = 50 \mu\text{m}$.

Geometries of three 3Bs are shown in Fig. 8. Each 3B has a different average length of the column. The 3B with an average L of $13.24 \mu\text{m}$ has an area ratio of 0.85 (Fig. 8a) whereas 3Bs with average L of $11.72 \mu\text{m}$ (Fig. 8b) and $9.95 \mu\text{m}$ (Fig. 8c) have area ratios of 0.77 and 0.69, respectively.

Single-scattering properties of small ice crystals

J. Um and
G. M. McFarquhar

Title Page

Abstract

Introduction

Conclusions

References

Tables

Figures

⏪

⏩

◀

▶

Back

Close

Full Screen / Esc

Printer-friendly Version

Interactive Discussion



4 Ray-tracing model

The parallel version of a geometric ray-tracing code (Um and McFarquhar, 2009), originally developed by Macke et al. (1996), was used to calculate the single-scattering properties of all small ice crystals models except those of Chebyshev particles. To calculate the single-scattering properties of Chebyshev particles, the geometric ray-tracing code of Macke and Grossklau (1998) was used. For Gaussian random spheres, the Gaussian random sphere geometry was used to generate idealized shape models and then corresponding single-scattering properties were calculated by the parallel version of the geometric ray-tracing code.

Two of the most interesting single-scattering properties for satellite and climate studies are the scattering phase function P_{11} and asymmetry parameter g . The P_{11} is normalized to unity, $\frac{1}{4\pi} \int_{4\pi} P_{11} d\Omega = 1$, and g is defined as $g = \frac{1}{4\pi} \int_{4\pi} P_{11} \cos\theta d\Omega$, where

Ω and θ is the solid angle and scattering angle, respectively. In these codes, the energy and polarization properties of light are defined by the Stokes vector (I, Q, U, V) .

Reflection and refraction procedures are repeated until the remaining energy of the Stokes vectors of internally reflected rays falls below 10^{-6} of the incident energy or until the rays leave the ice crystal. Because small ice crystals do not have preferred orientations in the atmosphere, random orientations are assumed. For each ice crystal used in this study, 240 000 random orientations, 2400 rays per orientation, and a scattering angle resolution of 0.25° are used. All numerical computations were carried out for $\lambda = 0.55 \mu\text{m}$, for which the refractive index of ice is $1.311 + i2.289 \times 10^{-9}$. Since the imaginary part of the refractive index is almost zero, the single-scattering albedo for all simulations are approximately 1. In this study, for all ice crystals and the chosen λ , the size parameters $(\pi D/\lambda)$ are larger than 285 and hence fall in the geometric optics regime.

Single-scattering properties of small ice crystals

J. Um and
G. M. McFarquhar

Title Page

Abstract

Introduction

Conclusions

References

Tables

Figures

⏪

⏩

◀

▶

Back

Close

Full Screen / Esc

Printer-friendly Version

Interactive Discussion



5 Results

5.1 Single-scattering properties of previously used models

The scattering phase function P_{11} and asymmetry parameter g of Chebyshev particles with varying area ratios are shown in Fig. 9a. As the area ratio decreases, Chebyshev particles become more non-spherical (Fig. 4) and the single-scattering properties are affected. The Chebyshev particle with an area ratio of 0.85 shows the scattering characteristics of a sphere with a peak at 134.5° , the angle of minimum deviation or rainbow angle. This angle is a bit smaller than the primary rainbow angle of 138.5° at $\lambda = 0.55 \mu\text{m}$ due to the deformation of the Chebyshev particle from a sphere. As the Chebyshev particle becomes more non-spherical, the primary rainbow angle disappears and the integrated energy in the lateral (60° to 120°) and backward (120° to 180°) directions increase, while the integrated energy in the forward (0° to 60°) direction decreases. As a result, g decreases with area ratio with the g of the Chebyshev particle with area ratio 0.77 (0.69) being 2.0% (5.23%) smaller than that with area ratio 0.85.

Figure 9b shows P_{11} and g of Gaussian random spheres with varying σ , and hence area ratio. There are no sharp peaks in P_{11} , which are commonly seen for other non-spherical particles. As the area ratio decreases, the integrated energy in the lateral and backward directions increases, while the forward scattering decreases. For example, when the area ratio decreases from 0.85 to 0.77 (0.69), the forward, lateral, and backward scattering change by -3.28% (-47.45%), $+66.39\%$ ($+141.14\%$), and $+17.64\%$ ($+43.33\%$), respectively. This decrease in forward scattering and increase in lateral and backward scattering leads to a decrease in g . The g for the Gaussian random sphere with area ratio of 0.77 (0.66) differs by -3.92% (-8.20%) from that for an area ratio of 0.85.

The shapes of droxtals differ from those of Chebyshev particles and Gaussian random spheres. Droxtals have facets, whereas Chebyshev particles and Gaussian random spheres have smooth surfaces, which lead to relatively smooth and featureless

Single-scattering properties of small ice crystals

J. Um and
G. M. McFarquhar

Title Page

Abstract

Introduction

Conclusions

References

Tables

Figures



Back

Close

Full Screen / Esc

Printer-friendly Version

Interactive Discussion



Single-scattering properties of small ice crystals

J. Um and
G. M. McFarquhar

Title Page

Abstract

Introduction

Conclusions

References

Tables

Figures

⏪

⏩

◀

▶

Back

Close

Full Screen / Esc

Printer-friendly Version

Interactive Discussion

P_{11} . The P_{11} for droxtals are characterized by several peaks as shown in Fig. 9c, the peaks being inherent features of faceted particles. The most pronounced peak for droxtals with area ratio of 0.85 is found at 10.50° , while it is at 15.25° and 14.75° for droxtals with area ratios of 0.77 and 0.69, respectively. These peaks are angles of minimum deviation associated with ray refraction through two faces of a particle. Other peaks shown also result from minimum deviations. Droxtals have relatively higher direct forward scattering than that of Chebyshev particles and Gaussian random spheres as shown in Fig. 9 because the several pairs of parallel faces on droxtals allow the direct forward scattering.

As the area ratio decreases, the forward scattering decreases and the lateral and backward scattering increase for droxtals. The decrease in the area of the parallel faces associated with the decreasing area ratio causes the decrease in the direct forward scattering. The energy scattered in the forward, lateral, and backward direction for the droxtal with area ratio of 0.77 (0.69) differs by -3.62% (-6.19%), $+46.64\%$ ($+77.37\%$), and $+6.71\%$ ($+10.60\%$) from those of the droxtal with area ratio of 0.85, respectively. As shown for Chebyshev particles and Gaussian random spheres, this leads to a 3.92% and 6.34% decrease in g for the droxtal with area ratio of 0.77 and 0.69, respectively, compared with that of the droxtal with area ratio of 0.85. In summary, there are decreases in forward scattering and increases in lateral and backward scattering, and hence decreases in g , for Chebyshev particles, Gaussian random spheres, and droxtals with decreasing area ratio. Such trends were previously seen by Um and McFarquhar (2007, 2009) who noted lower g as the shape of aggregates particles became more complex.

5.2 Single-scattering properties of 3B

Before examining how the single-scattering properties of 3Bs depend on area ratio, the single-scattering properties of possible configurations of the 3B shown in Fig. 7 are calculated. Figure 10 shows P_{11} and g of a core and possible geometrical shapes of 3B. The core (Fig. 7a), which has an area ratio of 0.94 and hence is quite close to spherical

Single-scattering properties of small ice crystals

J. Um and
G. M. McFarquhar

Title Page

Abstract

Introduction

Conclusions

References

Tables

Figures

⏪

⏩

◀

▶

Back

Close

Full Screen / Esc

Printer-friendly Version

Interactive Discussion

in shape, has $D = 23.22 \mu\text{m}$. The other configurations with emanating columns have L of $13.39 \mu\text{m}$ and an aspect ratio of 1.43 (Mitchell and Arnott, 1994). The most distinct difference between the P_{11} of the core and that of the other 3B configurations is the lower amounts of lateral scattering from the core. The lateral scattering of the core is 217.70%, 283.58%, and 285.27% less than that of the 3B with 20 regular hexagonal columns (Fig. 7b), with 20 regular hexagonal and 12 regular pentagonal columns (Fig. 7c), and with 20 regular hexagonal and 12 irregular hexagonal columns (Fig. 7d), respectively. This low lateral scattering is also seen for the Chebyshev particles in particular, but also to some degree for the Gaussian random sphere, and droxtal with area ratio of 0.85. Low lateral scattering is a distinct feature of the single-scattering properties of spheres. For the models of 3B with the arm structure, multiple scattering between columns leads to increases in the lateral scattering. The backward scattering of the core differs by -0.06% , $+23.77\%$, and $+25.21\%$ from that of 3Bs with the arm structures. The multiple scattering caused by the arm structure on the 3B also decreases the forward scattering compared to that of the core. For example, the forward scattering of core is $+10.37\%$, $+15.42\%$, and $+15.60\%$ greater than that of 3B with 20 regular hexagonal columns, with 20 regular hexagonal and 12 regular pentagonal columns, and with 20 regular hexagonal and 12 irregular hexagonal columns, respectively. The 3B with 20 regular hexagonal columns has the highest direct forward scattering because its higher numbers of parallel faces give more direct forward scattering. Due to the decrease in the forward scattering and the increase in the lateral and backward scattering, the g of 3Bs with arm structures is lower than that of the 3B core by up to 15.79%.

Figure 11 shows P_{11} and g for the 3Bs with aspect ratio of 1.43 for area ratios of 0.85, 0.77, and 0.69. For changes in area ratio, the g varies by only up to 0.55%, and the forward, lateral, and backward scattering differ by only up to 0.47%, 1.75%, and 2.16%, respectively. Compared with results from other small crystal models, these variations in P_{11} and g are small and not significant from the standpoint of how well g must be known for global climate modeling or remote sensing studies. This lack of sensitivity occurs

because the method for generating the 3B with varying area ratios differs from the methods by which the other shapes are generated. For the 3Bs, the lengths of columns were changed to generate crystals with varying area ratios so that the essential shape of the 3B was not varied; the shapes of other models were somewhat changed to make the crystals with different area ratio.

Another way to generate 3Bs with different area ratios is to vary the column aspect ratio. Six additional 3Bs, with aspect ratios of 1.0 and 1.7, were generated with the lengths of the columns set so that the area ratio were 0.85, 0.77, and 0.69. For changes in area ratio for 3Bs with aspect ratio of 1.0 (1.7), the difference in the integrated energy in the forward, lateral, and backward direction is up to 1.13% (1.54%), 0.53% (4.28%), and 14.67% (11.38%). The g can vary by up to 2.48% and 2.22% for the aspect ratio of 1.0 and 1.7, respectively. As the area ratio decreases from 0.85 to 0.69, the difference in g between 3Bs with different aspect ratios (i.e., 1.0, 1.43, and 1.7) decreases. For example, g varies by up to 4.46%, 2.39%, and 0.94% with aspect ratio for area ratios of 0.85, 0.77, and 0.69, respectively. The sensitivity of g to changes in aspect ratio decreases with area ratio because the more compact shape of smaller area ratio crystals produces increased multiple scattering between columns that overwhelms the influence of aspect ratio on the scattering properties. Overall, for all 3Bs examined, g for an area ratio of 0.77 (0.69) can differ by at most 3.60% (2.88%) compared to that of a 3B with area ratio of 0.85. Thus, compared with the difference in g of Chebyshev particles (up to 5.23%), Gaussian random spheres (up to 8.20%), and droxtals (up to 6.34%) with varying area ratio, variations in g for 3B are relatively small.

5.3 A comparison of single-scattering properties of small ice crystal models

Figure 12 shows P_{11} and g for different idealized models representing the shapes of small ice crystals as a function of area ratio. The 3B and droxtal show several sharp peaks in P_{11} , especially in the forward scattering direction, while the Chebyshev particle and Gaussian random sphere have smooth and featureless P_{11} . Because the former have facets, several minimum deviation angles occur and produce pronounced peaks in

Single-scattering properties of small ice crystals

J. Um and
G. M. McFarquhar

Title Page

Abstract

Introduction

Conclusions

References

Tables

Figures



Back

Close

Full Screen / Esc

Printer-friendly Version

Interactive Discussion



P_{11} . Further, parallel faces on the 3Bs and droxtals lead to higher direct forward scattering than that for Chebyshev particles and Gaussian random spheres. The Chebyshev particles show the lowest lateral and backward scattering regardless of the area ratio due to the relatively simple shapes. For example, the integrated energy in the lateral (backward) direction for a Chebyshev particle with area ratio of 0.85, 0.77, and 0.69 is 993.79% (131.70%), 509.80% (101.26%), and 141.47% (147.17%) less than that for a 3B with area ratio of 0.85, 0.77, and 0.69, respectively. Multiple scattering between columns is effective in the 3Bs so that the lateral and backward scattering is larger than those for other crystal models. The Chebyshev particles have higher integrated energy in the forward scattering direction than 3Bs, with the difference being 21.56%, 20.15%, and 16.12% for an area ratio of 0.85, 0.77, and 0.69, respectively. Large differences in directional scattering also exist between the previously used models (i.e., Chebyshev particles, Gaussian random spheres, and droxtals). The forward (lateral and backward) scattering of previously used models differs by up to 8.41% (325.94% and 119.70%) for particles with area ratios of 0.85 and by up to 10.54% (243.65% and 99.35%) and 9.45% (67.31% and 156.11%) for area ratios of 0.77 and 0.69, respectively. The Gaussian random sphere and droxtal reveal 5.16% (66.20% and 67.37%), 5.50% (46.47% and 51.82%), and 3.93% (22.25% and 29.15%) differences in the forward (lateral and backward) direction for area ratios of 0.85, 0.77, and 0.69, respectively. Table 1 summarizes the maximum and minimum differences in the integrated energy in the forward, lateral, and backward direction between idealized models for a given area ratio.

The magnitude of the differences in the lateral (up to 993.79%) and backward (up to 156.11%) direction between models that represent shapes of small ice crystals are crucial because most satellite retrievals rely on radiances reflected by clouds in the lateral and backward directions. For example, the maximum range of scattering angles sampled at mid to high latitudes for the Polarization and Directionality of Earth's Reflectances instrument is between 60° to 180°, and between 120° and 160° in the Tropics (Baran and Labonnote, 2007). Although the difference in the forward scattering (3.0 to 21.56%) is smaller than that in the lateral and backward directions, the differences are

Single-scattering properties of small ice crystals

J. Um and
G. M. McFarquhar

[Title Page](#)[Abstract](#)[Introduction](#)[Conclusions](#)[References](#)[Tables](#)[Figures](#)[Back](#)[Close](#)[Full Screen / Esc](#)[Printer-friendly Version](#)[Interactive Discussion](#)

still important because most light is scattered in the forward direction by ice crystals (e.g., 83% of the light is scattered in the forward direction by droxtals).

Table 2 and Fig. 13 summarize variations in g as a function of area ratio for different small crystal models and 3Bs with varying aspect ratio. The g for Chebyshev particles, Gaussian random spheres, and droxtals decrease with decreasing area ratio, whereas the g for 3Bs depends on the aspect ratio of the component columns. The g for 3Bs are lower than those for the other models by up to 24.60% because the complex shape of the 3Bs allows for more lateral and backward scattering as shown in Fig. 12. The forward scattering from 3Bs is up to 21.56% smaller than that from the other models, whereas the integrated energy in the lateral (backward) direction of 3Bs is up to 993.79% (147.17%) larger than that from the other models. The maximum difference in g is found between Chebyshev particles and 3Bs regardless of the area ratio, while the minimum difference in g between models is between Chebyshev particles and Gaussian random spheres or between Gaussian random spheres and droxtals depending on the area ratio. The variation in g between previously used models (i.e., Chebyshev particles, Gaussian random spheres, and droxtals) is up to 11.38%, 13.47%, and 12.56% for area ratios of 0.85, 0.77, and 0.69, respectively.

Overall, the differences in g are up to 24.60% between the four idealized models representing the same small ice crystals are significant because this is larger than the differences in g between the habits that are used to characterize the larger ice crystals. This variation also exceeds the accuracy of 2% and 5% in g for clouds with optical depths of 12 and 2, respectively, required to achieve an accuracy of $\pm 5\%$ for radiative flux calculation in climates studies (Vogelmann and Ackerman, 1995). Further, numerical simulations have shown that shapes of small ice crystals that predominant in cloud top have strong influences on cloud reflectance calculations (McFarquhar et al., 1999; Yang et al., 2001). Thus, differences in single-scattering properties of small ice crystals due to the choice of different idealized models have climatic and remote-sensing impacts.

Single-scattering properties of small ice crystals

J. Um and
G. M. McFarquhar

Title Page

Abstract

Introduction

Conclusions

References

Tables

Figures



Back

Close

Full Screen / Esc

Printer-friendly Version

Interactive Discussion



6 Conclusions and discussion

Images of ice crystals from cloud probes installed on aircraft flying through clouds during TWP-ICE and other field campaigns in diverse geographic regimes have shown that small ice crystals appear quasi-circular. Thus, idealized models previously developed to represent the shapes of small ice crystals, such as Chebyshev particles, Gaussian random spheres, and droxtals, are all quasi-spherical in shape. However, because of insufficient resolution in cloud particle images and diffraction effects associated with state-of-the-art cloud probes, it has been difficult to distinguish the fine structures of small ice crystals and hence to differentiate between the previously used crystal models.

Bailey and Hallet (2009) showed that ice crystals grown in the DRI fall tower were faceted or had emerging arms at sizes of 5–10 μm . Some of the ice crystals larger than 10 μm were also faceted and had budding arms when imaged by the DRI high-resolution cloud scope. Ulanowski et al. (2004) showed that an ice analogue ($D = 48 \mu\text{m}$) grown from sodium fluorosilicate solution on glass substrates, which has a similar crystalline structure to real ice crystals, appeared quasi-circular when imaged by a CPI. This ice analogue had a complex structure of several columns originating from a common center of mass, similar to observed small ice crystals in the DRI fall tower. Thus, there is a significant discrepancy between the shapes of the previously used shape models (i.e., Chebyshev particle, Gaussian random sphere, and droxtal) and the shapes of the ice analogue and the small ice crystals grown in the DRI fall tower even though all look similar when imaged by a CPI.

A new idealized model (budding Bucky ball, 3B) that resembles the small ice analogue was developed in this study. The corresponding single-scattering properties of 3B were calculated at $\lambda = 0.55 \mu\text{m}$ and compared with those of the other idealized models (i.e., Chebyshev particle, Gaussian random sphere, and droxtal). For each method, 3 different ice crystal models with area ratios of 0.85, 0.77, and 0.69 were generated and the dependence of the single-scattering properties of small ice crystals on the choice of idealized model and area ratio was determined.

Single-scattering properties of small ice crystals

J. Um and
G. M. McFarquhar

Title Page

Abstract

Introduction

Conclusions

References

Tables

Figures



Back

Close

Full Screen / Esc

Printer-friendly Version

Interactive Discussion



Single-scattering properties of small ice crystals

J. Um and
G. M. McFarquhar

Title Page

Abstract

Introduction

Conclusions

References

Tables

Figures

⏪

⏩

◀

▶

Back

Close

Full Screen / Esc

Printer-friendly Version

Interactive Discussion

The principal findings of this study are summarized as follows:

1. Among the 180 905 particles imaged by the CPI on 3 days during TWP-ICE, 178 102 (98.451%) particles were the only particles in a frame, while 2596 (1.435%), 186 (0.102%), 16 (0.009%), and 5 (0.003%) occurred in frames with 2, 3, 4, and 5 particles, respectively. This suggests that the shattering of ice crystals on the CPI during TWP-ICE was not frequent, and hence the quasi-circular small ice crystals in Fig. 1 likely correspond to naturally occurring ice crystals and not shattered artifacts.
2. Arms emanating from the core of a 3B increase the lateral and backward scattering and decrease the forward scattering compared to the core. For example, the forward, lateral, and backward scattering for a 3B with arms differs by up to -15.60% , $+285.27\%$, and $+25.21\%$ from its core. Due to differences in directional scattering, the g for a 3B with emanating arms is up to 15.79% smaller than that for its core.
3. Compared with previously used models (i.e., Chebyshev particles, Gaussian random spheres, and droxtals), a 3B scatters less light in the forward (up to 21.56%) and more light in the lateral (up to 993.79%) and backward (up to 147.17%) directions, and hence has smaller g (up to 24.60%) regardless of area ratio.
4. The Chebyshev particles and Gaussian random spheres show smooth and featureless P_{11} , whereas droxtals and 3Bs, which have a faceted structure, show several sharp peaks in P_{11} associated with angles of minimum deviation.
5. As the area ratio decreases and particles become more non-spherical, the integrated energy in the forward direction decreases and the integrated energy in the lateral and backward directions increases for Chebyshev particles, Gaussian random spheres, and droxtals. For example, the forward, lateral, and backward scattering for a Chebyshev particle (Gaussian random sphere and droxtal) increases by -5.18 (-7.45% and -6.19%), $+351.55\%$ ($+141.14\%$ and $+77.37\%$),

Single-scattering properties of small ice crystals

J. Um and
G. M. McFarquhar

Title Page

Abstract

Introduction

Conclusions

References

Tables

Figures

⏪

⏩

◀

▶

Back

Close

Full Screen / Esc

Printer-friendly Version

Interactive Discussion

and +23.96% (+43.33% and +10.60%) for a decrease in area ratio from 0.85 to 0.69. This leads to decreases in g , with g for a Chebyshev particle (Gaussian random sphere and droxtal) with area ratio of 0.69 being 5.23% (8.20% and 6.34%) smaller than that for area ratio of 0.85.

6. The P_{11} and g for 3B is less sensitive to the area ratio compared to the previously used models (i.e., Chebyshev particle, Gaussian random sphere, and droxtal). The differences in integrated energy in forward, lateral, and backward direction for 3Bs due to varying the area ratios are only up to 1.54%, 4.28%, and 14.67% with g varying by only up to 2.48%.

7. For a given area ratio, there are large differences in P_{11} between the idealized models (i.e., Chebyshev particle, Gaussian random sphere, droxtal, and 3B). Further, the forward (lateral and backward) scattering for different idealized models varies by up to 21.56% (993.79% and 131.70%), 20.15% (509.80% and 101.26%), and 16.12% (146.47% and 156.11%) for area ratios of 0.85, 0.77, and 0.69, respectively. Even without considering the new 3B model introduced here, the differences between previously used models (i.e., Chebyshev particles, Gaussian random spheres, and droxtals) are still up to 8.41% (325.94% and 119.70%), 10.54% (243.65% and 99.35%), and 9.45% (67.31% and 156.11%) in the forward (lateral and backward) scattering for area ratios of 0.85, 0.77, and 0.69, respectively.

8. The g for different models varies by up to 24.60%, 22.83%, and 18.93% for area ratios of 0.85, 0.77, and 0.69, respectively. Even without considering 3B, the differences between Chebyshev particles, Gaussian random spheres, and droxtals are up to 11.38%, 13.47%, and 12.56%.

In summary, the single-scattering properties of small ice crystals depend heavily on the choice of idealized model and area ratio. Because current state-of-the-art cloud probes cannot distinguish between these different models for small crystal shapes, different

cloud probes may be needed. This might include probes that provide higher resolution images or that make observations of the scattered light by particles. The Small Ice Detector mark 2 (SID-2, Cotton et al., 2010), which measures the angular distribution of scattered light rather than imaging particles, might provide such information.

5 However, since this probe matches measured angular distribution of scattered light to pre-calculated scattering libraries, it also requires idealized models to calculate corresponding single-scattering properties. Studies on the growth mechanisms for small ice crystals are also needed to understand how their shapes depend on atmospheric parameters (e.g., temperature, pressure, and humidity) and on formation mechanisms

10 (heterogeneous versus homogeneous freezing), and how they evolve with time. A subsequent study will also examine how the choice of small crystal models and area ratio affects contributions of small ice crystals on the bulk scattering properties of observed distributions of ice crystals with varying shapes and sizes.

Acknowledgements. This research was supported by the Office of Science (BER), United States Department of Energy under grant numbers DE-FG02-02ER63337, DE-FG02-07ER64378, DE-FG02-09ER64770, and DE-SC0001279 and in part by the National Science Foundation through TeraGrid resources provided by National Institute for Computational Sciences under grant number TG-ATM100017. Data were obtained from the Atmospheric Radiation Measurement program archive, sponsored by the DOE, Office of Science, Office of Biological and Environmental Research Environmental Science Division. The assistance of M. Freer,

15 R. McCoy, T. Tooman, W. Bolton, K. Black, and P. Lawson in the collection of the data during TWP-ICE was appreciated. We thank P. May, J. Mather, and C. Jakob for their efforts in leading TWP-ICE. We thank A. Macke for the original ray-tracing code, K. Muinonen and T. Nousiainen for the Gaussian random sphere code, and D. Wojtowicz for allocating computing power.

25 References

Arnott, W. P., Dong, Y. Y., Hallett, J., and Poellot, M. R.: Role of small ice crystals in radiative properties of cirrus: A case study, FIRE II, November 22, 1991, J. Geophys. Res., 99, 1371–1381, 1994.

Single-scattering properties of small ice crystals

J. Um and
G. M. McFarquhar

Title Page

Abstract

Introduction

Conclusions

References

Tables

Figures



Back

Close

Full Screen / Esc

Printer-friendly Version

Interactive Discussion



Single-scattering properties of small ice crystals

J. Um and
G. M. McFarquhar

Title Page

Abstract

Introduction

Conclusions

References

Tables

Figures

⏪

⏩

◀

▶

Back

Close

Full Screen / Esc

Printer-friendly Version

Interactive Discussion



- Bacon, N. J. and Swanson, B. D.: Laboratory measurements of light scattering by single levitated ice crystals, *J. Atmos. Sci.*, 57, 2094–2104, 2000.
- Bailey, M. P. and Hallett, J.: A Comprehensive Habit Diagram for Atmospheric Ice Crystals: Confirmation from the Laboratory, AIRS II, and Other Field Studies, *J. Atmos. Sci.*, 66, 2888–2899, 2009.
- Baran, A. J.: The dependence of cirrus infrared radiative properties on ice crystal geometry and shape of the size-distribution function, *Q. J. Roy. Meteor. Soc.*, 131, 1129–1142, 2005.
- Baran, A. J. and Labonnote, L. C.: A self-consistent scattering model for cirrus. I: The solar region, *Q. J. Roy. Meteor. Soc.*, 133, 1899–1912, 2007.
- Baum, B. A., Kratz, D. P., Yang, P., Ou, S. C., Hu, Y. X., Soulen, P. F., and Tsay, S.-C.: Remote sensing of cloud properties using MODIS airborne simulator imagery during SUCCESS 1. Data and models, *J. Geophys. Res.*, 105, 11767–11780, 2000.
- Baum, B. A., Yang, P., Nasiri, S., Heidinger, A. K., Heymsfield, A., and Li, J.: Bulk scattering properties for the remote sensing of ice clouds. Part III: High-resolution spectral models from 100 to 3250 cm^{-1} , *J. Appl. Meteorol. Climatol.*, 46, 423–434, 2007.
- Baumgardner, D. and Korolev, A.: Airspeed corrections for optical array probe sample volumes, *J. Atmos. Ocean. Technol.*, 14, 1224–1229, 1997.
- Chuang, C. C. and Beard, K. V.: A numerical model for the equilibrium shape of electrified raindrops, *J. Atmos. Sci.*, 47, 1374–1389, 1990.
- Cotton, R., Osborne, S., Ulanowski, Z., Hirst, E., Kaye, P. H., and Greenaway, R. S.: The ability of the Small Ice Detector (SID-2) to characterize cloud particle and aerosol morphologies obtained during flights of the FAAM BAe-146 research aircraft, *J. Atmos. Ocean. Technol.*, 27, 290–303, 2010.
- Field, P. R., Heymsfield, A. J., and Bansemer, A.: Shattering and particle interarrival times measured by optical array probes in ice clouds, *J. Atmos. Ocean. Technol.*, 23, 1357–1371, 2006.
- Hartmann, D. L., Ockert-Bell, M. E., and Michelsen, M. L.: The effect of cloud type on earth's energy balance: Global analysis, *J. Clim.*, 5, 1281–1304, 1992.
- laquinta, J., Isaka, H., and Personne, P.: Scattering phase function of bullet rosette ice crystals, *J. Atmos. Sci.*, 52, 1401–1413, 1995.
- Korolev, A. V., Emery, E. F., Strapp, J. W., Cober, S. G., Isaac, G. A., Wasey, M., and Marcotte, D.: Small ice particle observations in tropospheric clouds: fact or artifact?, *B. A. Meteorol. Soc.*, accepted, 2010.

Single-scattering properties of small ice crystals

J. Um and
G. M. McFarquhar

Title Page

Abstract

Introduction

Conclusions

References

Tables

Figures

◀

▶

◀

▶

Back

Close

Full Screen / Esc

Printer-friendly Version

Interactive Discussion



- Liou, K. N.: Influence of cirrus clouds on weather and climate processes: a global perspective, *Mon. Weather Rev.*, 114, 1167–1199, 1986.
- Macke, A. and Grossklaus, M.: Light scattering by nonspherical raindrops: Implications for lidar remote sensing of rainrates, *J. Quant. Spectrosc. Ra.*, 60, 355–363, 1998.
- 5 Macke, A., Mueller, J., and Raschke, E.: Single scattering properties of atmospheric ice crystals, *J. Atmos. Sci.*, 53, 2813–2825, 1996.
- McFarquhar, G. M. and Heymsfield, A. J.: Microphysical characteristics of three anvils sampled during the Central Equatorial Pacific Experiment, *J. Atmos. Sci.*, 53, 2401–2423, 1996.
- 10 McFarquhar, G. M. and Heymsfield, A. J.: Parameterization of tropical cirrus ice crystal size distributions and implications for radiative transfer: Results from CEPEX, *J. Atmos. Sci.*, 54, 2187–2200, 1997.
- McFarquhar, G. M., Heymsfield, A. J., Macke, A., Iaquinta, J., and Aulenbach, S. M.: Use of observed ice crystal sizes and shapes to calculate mean-scattering properties and multi-spectral radiances: CEPEX April 4, 1993, case study, *J. Geophys. Res.*, 104, 31763–31779, 15 1999.
- McFarquhar, G. M., Heymsfield, A. J., Spinhirne, J., and Hart, B.: Thin and subvisual tropopause tropical cirrus: Observations and radiative impacts, *J. Atmos. Sci.*, 57, 1841–1853, 2000.
- McFarquhar, G. M., Yang, P., Macke, A., and Baran, A. J.: A new parameterization of single scattering solar radiative properties for tropical anvils using observed ice crystal size and shape distributions, *J. Atmos. Sci.*, 59, 2458–2478, 2002.
- 20 McFarquhar, G. M., Um, J., Freer, M., Baumgardner, D., Kok, G. L., and Mace, G. G.: Importance of small ice crystals to cirrus properties: Observations from the Tropical Warm Pool International Cloud Experiment (TWP-ICE), *Geophys. Res. Lett.*, 34, L13803, doi:10.1029/2007GL029865, 2007.
- 25 McFarquhar, G. M., Ghan, S., Verlinde, J., Korolev, A., Strapp, J. W., Schmid, B., Tomlinson, J. M., Wolde, M., Brooks, S. D., Cziczo, D., Dubey, M. K., Fan, J., Flynn, C., Gultepe, I., Hubbe, J., Gilles, M. K., Laskin, A., Lawson, P., Leaitch, W. R., Liu, P., Liu, X., Lubin, D., Mazzoleni, C., Macdonald, A.-M., Moffet, R. C., Morrison, H., Ovchinnikov, M., Shupe, M., Turner, D. D., Xie, S., Zwiwnyuk, A., Bae, K., Freer, M., and Glen, A.: Indirect and semi-direct aerosol campaign (ISDAC): The impact of arctic aerosols on clouds, *B. Am. Meteorol. Soc.*, accepted, 2010.
- 30 Mitchell, D. L. and Arnott, W. P.: A model predicting the evolution of ice particle size spectra

Single-scattering properties of small ice crystals

J. Um and
G. M. McFarquhar

Title Page

Abstract

Introduction

Conclusions

References

Tables

Figures

◀

▶

◀

▶

Back

Close

Full Screen / Esc

Printer-friendly Version

Interactive Discussion



- and radiative properties of cirrus clouds. Part II: Dependence of absorption and extinction on ice crystal morphology, *J. Atmos. Sci.*, 51, 817–832, 1994.
- Mugnai, A. and Wiscombe, W. J.: Scattering of radiation by moderately nonspherical particles, *J. Atmos. Sci.*, 37, 1291–1307, 1980.
- 5 Muinonen, K. and Lagerros, J. S. V.: Inversion of shape statistics for small solar system bodies, *Astron. Astrophys.*, 333, 753–761, 1998.
- Muinonen, K., Nousiainen, T., Fast, P., Lumme, K., and Peltoniemi, J. I.: Light scattering by Gaussian random particles: Ray optics approximation, *J. Quant. Spectrosc. Ra.*, 55, 577–601, 1996.
- 10 Nasiri, S. L., Baum, B. A., Heymsfield, A. J., Yang, P., Poellot, M. R., Kratz, D. P., and Hu, Y. X.: The development of midlatitude cirrus models for MODIS using FIRE-I, FIRE-II, and ARM in situ data, *J. Appl. Meteorol.*, 41, 197–217, 2002.
- Nousiainen, T. and Muinonen, K.: Light scattering by Gaussian, randomly oscillating raindrops, *J. Quant. Spectrosc. Ra.*, 63, 643–666, 1999.
- 15 Nousiainen, T., Muinonen, K., and Raisanen, P.: Scattering of light by large Saharan dust particles in a modified ray optics approximation, *J. Geophys. Res.*, 108, 4025, doi:10.1029/2001JD001277, 2003.
- Nousiainen, T. and McFarquhar, G. M.: Light scattering by quasi-spherical ice crystals, *J. Atmos. Sci.*, 61, 2229–2248, 2004.
- 20 Ohtake, T.: Unusual crystal in ice fog, *J. Atmos. Sci.*, 27, 509–511, 1970.
- Ramanathan, V., Pitcher, E. J., Malone, R. C., and Blackmon, M. L.: The response of a spectral general circulation model to refinements in radiative processes, *J. Atmos. Sci.*, 40, 605–630, 1983.
- Takano, Y. and Liou, K. N.: Solar radiative-transfer in cirrus clouds .1. Single-scattering and optical-properties of hexagonal ice crystals, *J. Atmos. Sci.*, 46, 3–19, 1989.
- 25 Thuman, W. C. and Robinson, E.: Studies of Alaskan ice-fog particles, *J. Meteor.*, 11, 151–156, 1954.
- Ulanowski, Z., Hesse, E., Kaye, P. H., Baran, A. J., and Chandrasekhar, R.: Scattering of light from atmospheric ice analogues, *J. Quant. Spectrosc. Ra.*, 79, 1091–1102, 2003.
- 30 Ulanowski, Z., Connolly, P., Flynn, M., Gallagher, M., Clarke, A. J. M., and Hesse, E.: Using ice crystal analogues to validate cloud ice parameter retrievals from the CPI ice spectrometer data, 14th International Conference on Clouds and Precipitation, Bologna, Italy, 2004.
- Ulanowski, Z., Hesse, E., Kaye, P. H., and Baran, A. J.: Light scattering by complex ice-

Single-scattering properties of small ice crystals

J. Um and
G. M. McFarquhar

Title Page

Abstract

Introduction

Conclusions

References

Tables

Figures

⏪

⏩

◀

▶

Back

Close

Full Screen / Esc

Printer-friendly Version

Interactive Discussion



analogue crystals, *J. Quant. Spectrosc. Ra.*, 100, 382–392, 2006.

Um, J. and McFarquhar, G. M.: Single-scattering properties of aggregates of bullet rosettes in cirrus, *J. Appl. Meteorol. Climatol.*, 46, 757–775, 2007.

Um, J. and McFarquhar, G. M.: Single-scattering properties of aggregates of plates, *Q. J. Roy. Meteor. Soc.*, 135, 291–304, 2009.

Vogelmann, A. M. and Ackerman, T. P.: Relating cirrus cloud properties to observed fluxes: A critical assessment, *J. Atmos. Sci.*, 52, 4285–4301, 1995.

Wylie, D. P., Menzel, W. P., Woolf, H. M., and Strabala, K. I.: 4 years of global cirrus cloud statistics using HIRS, *J. Clim.*, 7, 1972–1986, 1994.

Yang, P. and Liou, K. N.: Single-scattering properties of complex ice crystals in terrestrial atmosphere, *Contrib. Atmos. Phys.*, 71, 223–248, 1998.

Yang, P., Gao, B. C., Baum, B. A., Wiscombe, W. J., Hu, Y. X., Nasiri, S. L., Soulen, P. F., Heymsfield, A. J., McFarquhar, G. M., and Miloshevich, L. M.: Sensitivity of cirrus bidirectional reflectance to vertical inhomogeneity of ice crystal habits and size distributions for two Moderate-Resolution Imaging Spectroradiometer (MODIS) bands, *J. Geophys. Res.*, 106, 17267–17291, 2001.

Yang, P., Baum, B. A., Heymsfield, A. J., Hu, Y. X., Huang, H.-L., Tsay, S.-C., and Ackerman, S.: Single-scattering properties of droxtals, *J. Quant. Spectrosc. Ra.*, 79–80, 1159–1169, 2003.

Yang, P., Wei, H., Huang, H.-L., Baum, B. A., Hu, Y. X., Kattawar, G. W., Mishchenko, M. I., and Fu, Q.: Scattering and absorption property database for nonspherical ice particles in the near- through far-infrared spectral region, *Appl. Optics*, 44, 5512–5523, 2005.

Zhang, Y., Macke, A., and Albers, F.: Effect of crystal size spectrum and crystal shape on stratiform cirrus radiative forcing, *Atmos. Res.*, 52, 59–75, 1999.

Zhang, Z. B., Yang, P., Kattawar, G. W., Tsay, S.-C., Baum, B. A., Hu, Y. X., Heymsfield, A. J., and Reichardt, J.: Geometrical-optics solution to light scattering by droxtal ice crystals, *Appl. Optics*, 43, 2490–2499, 2004.

Single-scattering properties of small ice crystals

J. Um and
G. M. McFarquhar

Table 2. Maximum and minimum difference in g of idealized models representing shapes of small ice crystals as a function of the area ratio. For a given area ratio of small ice crystal the maximum and minimum difference (%) between g and the corresponding names of the idealized models are listed. Acronyms for idealized models are the same as in Table 1.

Area ratio	Maximum difference in g	Minimum difference in g
0.85	CH & 3B 24.60%	CH & GS 3.83%
0.77	CH & 3B 22.83%	CH & GS 5.61%
0.69	CH & 3B 18.93%	GS & DX 5.01%

[Title Page](#)
[Abstract](#)
[Introduction](#)
[Conclusions](#)
[References](#)
[Tables](#)
[Figures](#)
[⏪](#)
[⏩](#)
[◀](#)
[▶](#)
[Back](#)
[Close](#)
[Full Screen / Esc](#)
[Printer-friendly Version](#)
[Interactive Discussion](#)

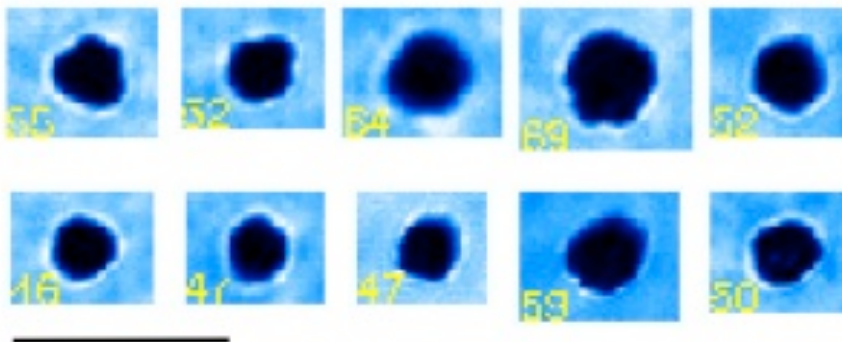

**Single-scattering
properties of small
ice crystals**J. Um and
G. M. McFarquhar

Fig. 1. Example small ice crystals imaged by the CPI during TWP-ICE. The 200 μm scale bar embedded left bottom corner. Maximum dimension is indicated within each image.

[Title Page](#)[Abstract](#)[Introduction](#)[Conclusions](#)[References](#)[Tables](#)[Figures](#)[◀](#)[▶](#)[◀](#)[▶](#)[Back](#)[Close](#)[Full Screen / Esc](#)[Printer-friendly Version](#)[Interactive Discussion](#)

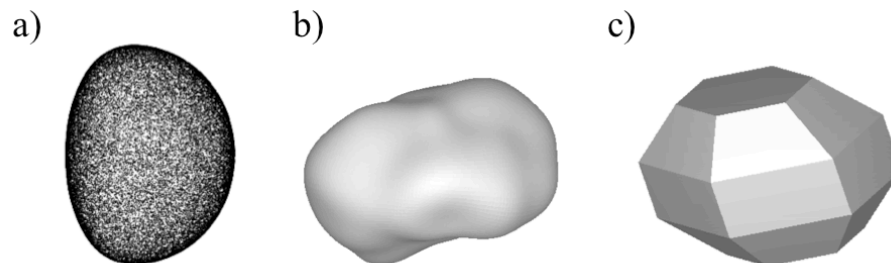
**Single-scattering
properties of small
ice crystals**J. Um and
G. M. McFarquhar

Fig. 2. Idealized models representing shapes of small ice crystals; **(a)** Chebyshev particle (Mugnì and Wiscombe, 1980); **(b)** Gaussian random sphere (Nousiainen and McFarquhar, 2004); and **(c)** droxtal (Yang et al., 2003).

[Title Page](#)[Abstract](#)[Introduction](#)[Conclusions](#)[References](#)[Tables](#)[Figures](#)[◀](#)[▶](#)[◀](#)[▶](#)[Back](#)[Close](#)[Full Screen / Esc](#)[Printer-friendly Version](#)[Interactive Discussion](#)

Single-scattering properties of small ice crystals

J. Um and
G. M. McFarquhar

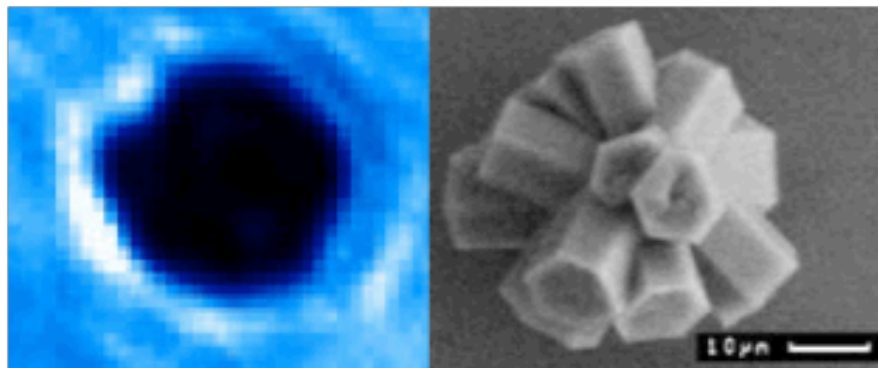


Fig. 3. A small ice analogue ($D = 48 \mu\text{m}$) imaged by a CPI (left) and by a scanning electron microscope (right) with $10 \mu\text{m}$ scale bar. Adapted from Ulanowski et al. (2004).

[Title Page](#)[Abstract](#)[Introduction](#)[Conclusions](#)[References](#)[Tables](#)[Figures](#)[◀](#)[▶](#)[◀](#)[▶](#)[Back](#)[Close](#)[Full Screen / Esc](#)[Printer-friendly Version](#)[Interactive Discussion](#)

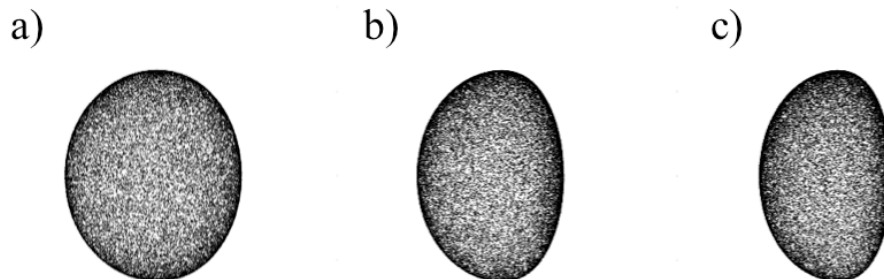
**Single-scattering
properties of small
ice crystals**J. Um and
G. M. McFarquhar

Fig. 4. Chebyshev particles ($D = 50 \mu\text{m}$) with varying area ratios of **(a)** 0.85, **(b)** 0.77, and **(c)** 0.69.

Title Page

Abstract

Introduction

Conclusions

References

Tables

Figures

◀

▶

◀

▶

Back

Close

Full Screen / Esc

Printer-friendly Version

Interactive Discussion

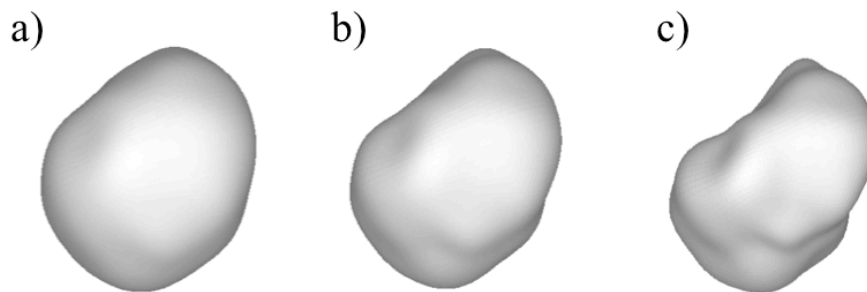
**Single-scattering
properties of small
ice crystals**J. Um and
G. M. McFarquhar

Fig. 5. Gaussian random spheres ($D = 50 \mu\text{m}$) with **(a)** $\sigma = 0.069$, **(b)** $\sigma = 0.110$, and **(c)** $\sigma = 0.179$. The corresponding area ratios are (a) 0.85, (b) 0.77, and (c) 0.69.

[Title Page](#)[Abstract](#)[Introduction](#)[Conclusions](#)[References](#)[Tables](#)[Figures](#)[◀](#)[▶](#)[◀](#)[▶](#)[Back](#)[Close](#)[Full Screen / Esc](#)[Printer-friendly Version](#)[Interactive Discussion](#)

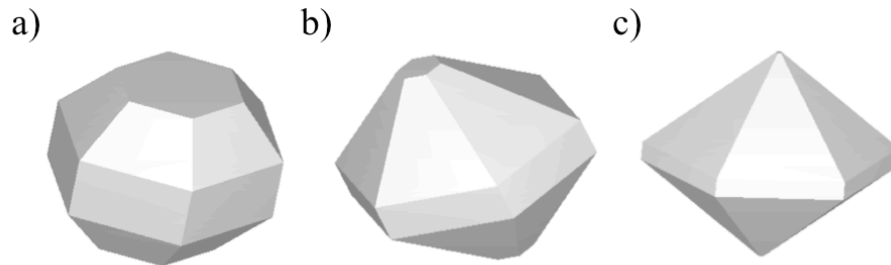
**Single-scattering
properties of small
ice crystals**J. Um and
G. M. McFarquhar

Fig. 6. Droxtals with **(a)** $\theta_1 = 32.35^\circ$ and $\theta_2 = 71.81^\circ$, **(b)** $\theta_1 = 10.00^\circ$ and $\theta_2 = 80.00^\circ$, and **(c)** $\theta_1 = 1.5^\circ$ and $\theta_2 = 85.0^\circ$. The D for each droxtal is $50\ \mu\text{m}$ and the corresponding area ratios are (a) 0.85, (b) 0.77, and (c) 0.69.

Title Page

Abstract

Introduction

Conclusions

References

Tables

Figures

◀

▶

◀

▶

Back

Close

Full Screen / Esc

Printer-friendly Version

Interactive Discussion

Single-scattering properties of small ice crystals

J. Um and
G. M. McFarquhar

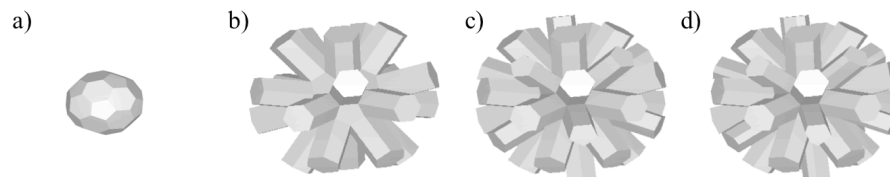


Fig. 7. From left to right: **(a)** a core of 3B, **(b)** 3B with 20 regular hexagonal columns, **(c)** 3B with 20 regular hexagonal and 12 pentagonal columns, and **(d)** 3B with 20 regular and 12 irregular hexagonal columns.

[Title Page](#)[Abstract](#)[Introduction](#)[Conclusions](#)[References](#)[Tables](#)[Figures](#)[◀](#)[▶](#)[◀](#)[▶](#)[Back](#)[Close](#)[Full Screen / Esc](#)[Printer-friendly Version](#)[Interactive Discussion](#)

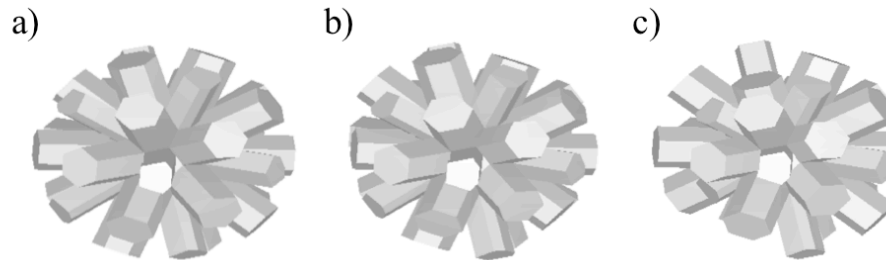
**Single-scattering
properties of small
ice crystals**J. Um and
G. M. McFarquhar

Fig. 8. Examples of 3Bs with $D = 50 \mu\text{m}$ and 20 regular and 12 irregular hexagonal columns whose length varies. The corresponding area ratios are **(a)** 0.85, **(b)** 0.77, and **(c)** 0.69.

[Title Page](#)[Abstract](#)[Introduction](#)[Conclusions](#)[References](#)[Tables](#)[Figures](#)[◀](#)[▶](#)[◀](#)[▶](#)[Back](#)[Close](#)[Full Screen / Esc](#)[Printer-friendly Version](#)[Interactive Discussion](#)

Single-scattering properties of small ice crystals

J. Um and
G. M. McFarquhar

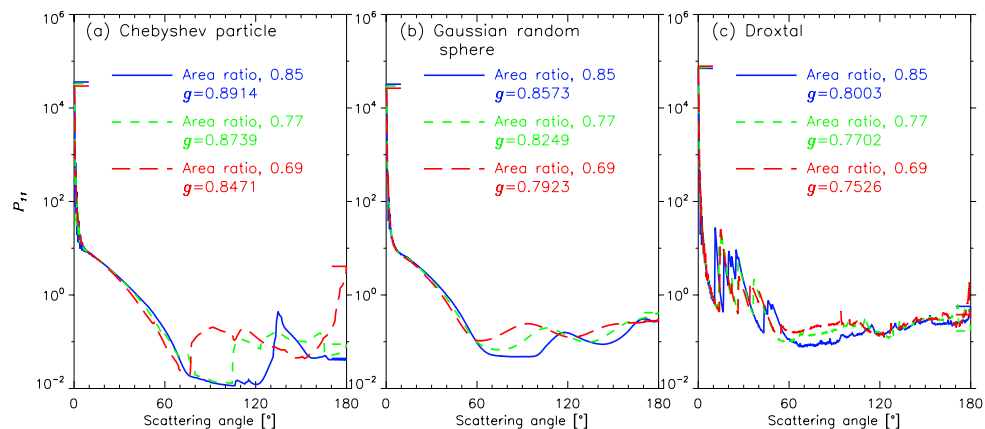


Fig. 9. Scattering phase function (P_{11}) and asymmetry parameter (g) for **(a)** Chebyshev particles, **(b)** Gaussian random spheres, and **(c)** droxtals with varying area ratio. The direct forward and backward peaks are indicated by bars. The shapes of Chebyshev particles, Gaussian random sphere, and droxtals are shown in Figs. 4, 5, and 6, respectively.

[Title Page](#)
[Abstract](#)
[Introduction](#)
[Conclusions](#)
[References](#)
[Tables](#)
[Figures](#)
[◀](#)
[▶](#)
[◀](#)
[▶](#)
[Back](#)
[Close](#)
[Full Screen / Esc](#)
[Printer-friendly Version](#)
[Interactive Discussion](#)

Single-scattering properties of small ice crystals

J. Um and
G. M. McFarquhar

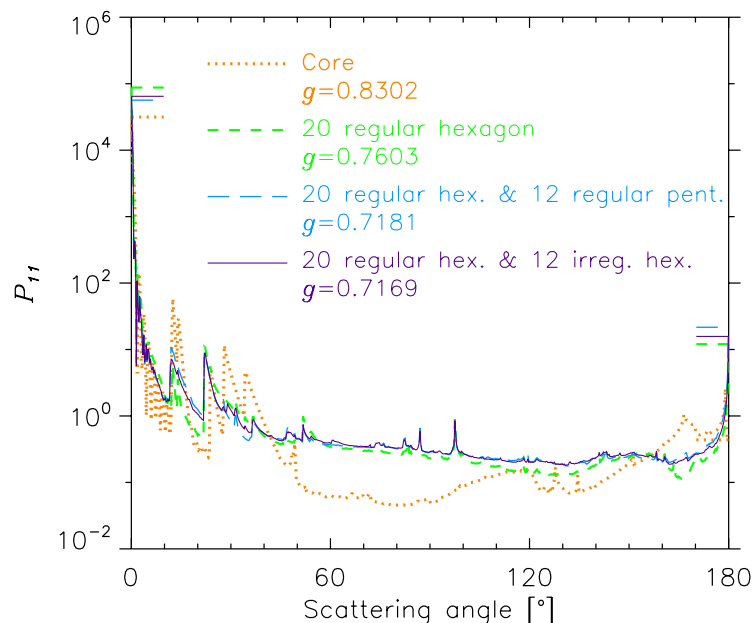


Fig. 10. P_{11} and g for the 3B core (yellow), 3B with 20 regular hexagonal columns (green), 3B with 20 regular and 12 regular pentagonal columns (blue), and 3B with 20 regular hexagonal and 12 irregular hexagonal columns (purple). The direct forward and backward peaks are indicated by bars. The shape of each 3B is shown in Fig. 7.

[Title Page](#)
[Abstract](#)
[Introduction](#)
[Conclusions](#)
[References](#)
[Tables](#)
[Figures](#)
[◀](#)
[▶](#)
[◀](#)
[▶](#)
[Back](#)
[Close](#)
[Full Screen / Esc](#)
[Printer-friendly Version](#)
[Interactive Discussion](#)

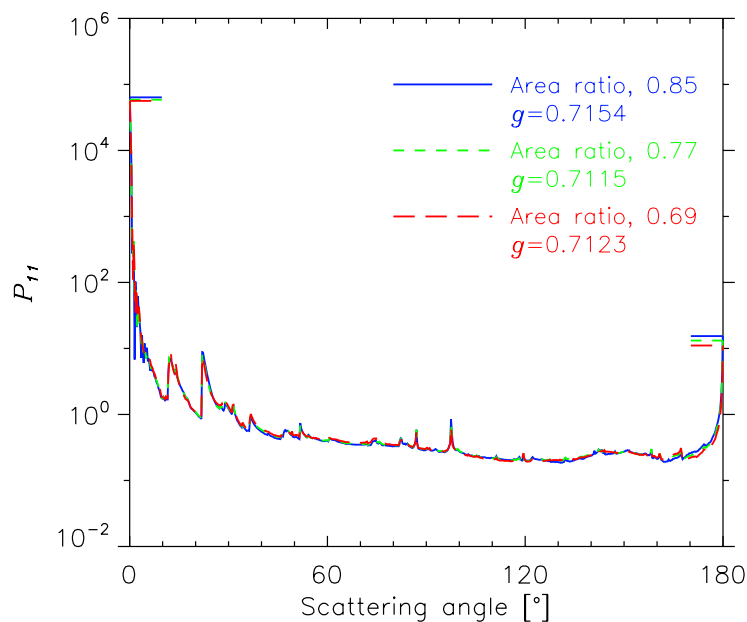
**Single-scattering
properties of small
ice crystals**J. Um and
G. M. McFarquhar

Fig. 11. P_{11} and g for the 3Bs with varying area ratio. The direct forward and backward peaks are indicated by bars. The shape of each 3B is shown in Fig. 8.

Title Page

Abstract

Introduction

Conclusions

References

Tables

Figures

◀

▶

◀

▶

Back

Close

Full Screen / Esc

Printer-friendly Version

Interactive Discussion

Single-scattering properties of small ice crystals

J. Um and
G. M. McFarquhar

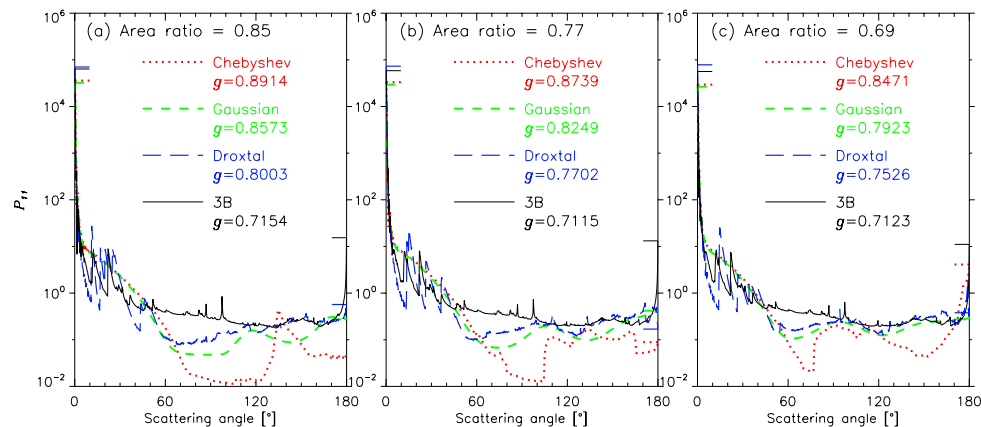


Fig. 12. P_{11} and g for Chebyshev particles, Gaussian random spheres, droxtals, and 3Bs with varying area ratio of 0.85 (a), 0.77 (b), and 0.69 (c). Here, aspect ratio of 1.43 is used for 3Bs. The direct forward and backward peaks are indicated by bars.

Title Page

Abstract

Introduction

Conclusions

References

Tables

Figures

◀

▶

◀

▶

Back

Close

Full Screen / Esc

Printer-friendly Version

Interactive Discussion

Single-scattering properties of small ice crystals

J. Um and
G. M. McFarquhar

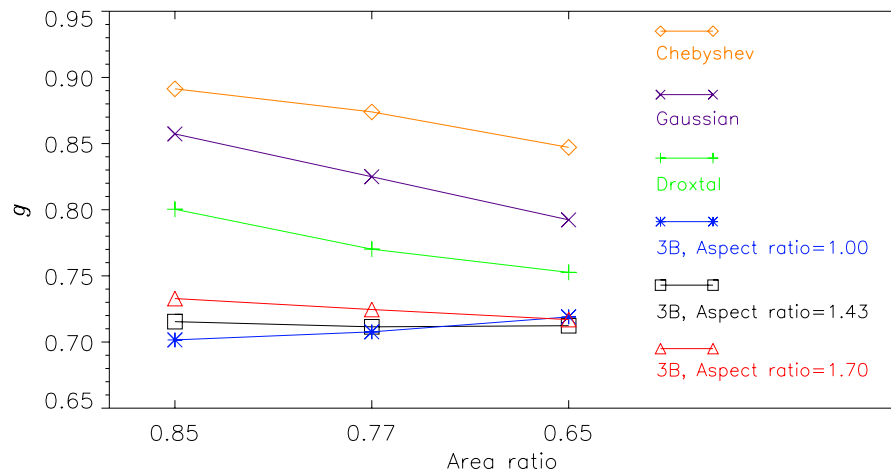


Fig. 13. The g of idealized models representing small ice crystals. In addition to g of 3B with aspect ratio of 1.43, the g for 3Bs with aspect ratio of 1.0 and 1.7 is also embedded.

[Title Page](#)
[Abstract](#)
[Introduction](#)
[Conclusions](#)
[References](#)
[Tables](#)
[Figures](#)
[◀](#)
[▶](#)
[◀](#)
[▶](#)
[Back](#)
[Close](#)
[Full Screen / Esc](#)
[Printer-friendly Version](#)
[Interactive Discussion](#)
