

This discussion paper is/has been under review for the journal Atmospheric Chemistry and Physics (ACP). Please refer to the corresponding final paper in ACP if available.

## Solar irradiance at the Earth's surface

J. E. Frederick and  
A. L. Hodge

# Solar irradiance at the Earth's surface: long-term behavior observed at the South Pole

J. E. Frederick and A. L. Hodge

Department of the Geophysical Sciences, University of Chicago, Chicago, Illinois, USA

Received: 24 September 2010 – Accepted: 21 October 2010 – Published: 3 November 2010

Correspondence to: J. E. Frederick (frederic@uchicago.edu)

Published by Copernicus Publications on behalf of the European Geosciences Union.

Title Page

Abstract

Introduction

Conclusions

References

Tables

Figures

◀

▶

◀

▶

Back

Close

Full Screen / Esc

Printer-friendly Version

Interactive Discussion



## Abstract

This research examines a 17-year database of UV-A (320–400 nm) and visible (400–600 nm) solar irradiance obtained by a scanning spectroradiometer located at the South Pole. The goal is to define the variability in solar irradiance reaching the polar surface, with emphasis on the influence of cloudiness and on identifying systematic trends and possible links to the solar cycle. To eliminate changes associated with the varying solar elevation, the analysis focuses on data averaged over 30–35 day periods centered on each year's austral summer solstice. The long-term average effect of South Polar clouds is a small attenuation, with the mean measured irradiances being about 5–6% less than the clear-sky values, although at any specific time clouds may reduce or enhance the signal that reaches the sensor. The instantaneous fractional attenuation or enhancement is wavelength dependent, where the percent deviation from the clear-sky irradiance at 400–600 nm is typically 2.5 times that at 320–340 nm. When averaged over the period near each year's summer solstice, significant correlations appear between irradiances at all wavelengths and the solar cycle as measured by the 10.7 cm solar radio flux. An approximate  $1.8 \pm 1.0\%$  decrease in ground-level irradiance occurs from solar maximum to solar minimum for the wavelength band 320–400 nm. The corresponding decrease for 400–600 nm is  $2.4 \pm 1.9\%$ . The best-estimate declines appear too large to originate in the sun. If the correlations have a geophysical origin, they suggest a small variation in atmospheric attenuation with the solar cycle over the period of observation, with the greatest attenuation occurring at solar minimum.

## 1 Introduction

Solar radiation reaching the Earth's surface varies over a range of spatial and temporal scales. These variations include erratic short-term fluctuations associated with local cloudiness, longer-term changes in atmospheric attenuation on regional or global

ACPD

10, 25871–25908, 2010

## Solar irradiance at the Earth's surface

J. E. Frederick and  
A. L. Hodge

Title Page

Abstract

Introduction

Conclusions

References

Tables

Figures



Back

Close

Full Screen / Esc

Printer-friendly Version

Interactive Discussion



scales (Wild, 2009), and changes in the extraterrestrial irradiance over the 11-year solar cycle (Willson, 1997; Fröhlich, 2009) and the very long time scale of stellar evolution (Gough, 1981).

This research examines the 17-year database of UV-A and visible solar irradiances obtained by a scanning spectroradiometer located at the South Pole, Amundsen-Scott Station (90° S). The instrument is part of the National Science Foundation's Ultraviolet Radiation Monitoring Network, whose measurements extend to 600 nm in wavelength. Booth et al. (1994) have discussed details of the sensor, while Bernhard et al. (2004) provide a comprehensive review of the data processing. The goal of this work is to define the magnitude and characteristics of variability in solar irradiance reaching the South Polar surface near summer solstice, with an emphasis on the influence of cloudiness and on identifying systematic trends and possible links to the solar cycle.

## 2 The dataset

This work considers measured irradiances integrated over the wavelength bands 320–340 nm, 340–360 nm, 360–400 nm, and 400–600 nm expressed in  $\text{W m}^{-2}$ . The time period of interest extends from December 1992 to January 2009. All measured irradiances are accompanied by calculated values appropriate to clear skies using column ozone amounts derived from the spectroradiometer data (Bernhard et al., 2003). Details of the calculations appear in Bernhard et al. (2004).

The solar irradiance incident on a horizontal surface is a sensitive function of solar zenith angle (SZA), and any analysis of variability in irradiance must control for changes in SZA. The South Pole is distinguished by the fact that the SZA is essentially constant during an extended period around the December solstice of each year. To utilize this fact, we use only irradiance data collected when the SZA was within 1° of its annual minimum value. This corresponds to dates from 7 December through 8 January, defined here as a “solstice period” and labeled by the calendar year which contains December. For example, the 2003 solstice period extends from 7 December 2003 to 8

### Solar irradiance at the Earth's surface

J. E. Frederick and  
A. L. Hodge

Title Page

Abstract

Introduction

Conclusions

References

Tables

Figures



Back

Close

Full Screen / Esc

Printer-friendly Version

Interactive Discussion



**Solar irradiance at the Earth's surface**J. E. Frederick and  
A. L. Hodge

Title Page

Abstract

Introduction

Conclusions

References

Tables

Figures

◀

▶

◀

▶

Back

Close

Full Screen / Esc

Printer-friendly Version

Interactive Discussion



January 2004 during which time the SZA always lies in the range 66.56 to 67.56°. The entire dataset consists of 17 consecutive solstice periods, 1992 through 2008, with a total of 37 173 irradiance measurements in each wavelength band. Although data exist for the 1991 solstice period, the observations are contaminated by excess atmospheric aerosols associated with the eruption of the Pinatubo volcano in April of that year. We therefore eliminated this particular solstice period from consideration.

Figure 1a–b presents the entire dataset of measured and computed clear-sky irradiances, respectively, for the wavelength band 320–340 nm, where the horizontal axis is the year which labels each solstice period. Figure 2a–b is analogous for the spectral region 400–600 nm. Several features in Figs. 1 and 2 merit comment. First, the clear-sky computed irradiances (Figs. 1b and 2b) show a relatively small variation within a single solstice period. This arises from the one degree spread in SZA and from weak attenuation by ozone in the wavelength bands 320–340 nm and 400–600 nm, while absorption by ozone is negligible between 340 and 400 nm (Molina and Molina, 1986; World Meteorological Organization, 1985). Column ozone amounts in early December are particularly variable owing to interannual differences in the dissipation of each year's springtime ozone reduction. Next, the variability in measured irradiance (Figs. 1a and 2a) during any one solstice period is substantially greater than in the corresponding clear-sky values. This is the expected result of varying cloudiness. Furthermore, measured irradiances in excess of the clear-sky values occur in both spectral bands, indicating that cloudiness can both decrease and increase ground-level irradiance. Finally, the percentage variability in irradiance at 400–600 nm is substantially greater than at 320–340 nm.

Table 1 presents some statistical properties of the dataset for all four wavelength bands, where the symbols  $E_{MS}$  and  $E_{CL}$  refer to the measured and clear-sky irradiances, respectively. Note in particular the fractional variability, defined as the ratio of the standard deviation to the mean irradiance,  $\sigma(E_{MS})/\langle E_{MS} \rangle$  and  $\sigma(E_{CL})/\langle E_{CL} \rangle$ , based on all data points for each wavelength band. For the clear-sky calculations  $\sigma(E_{CL})/\langle E_{CL} \rangle$  is greatest at the shortest wavelength where absorption by ozone is

relatively important, and it remains essentially constant at longer wavelengths reflecting the small variation in SZA. The measured irradiances show a very different pattern. Here the fractional variability represented by  $\sigma(E_{\text{MS}})/\langle E_{\text{MS}} \rangle$  increases systematically with increasing wavelength, reaching almost six times the clear-sky value in the 400–600 nm wavelength band.

To characterize the influence of cloudiness on surface irradiance it is useful to define a quantity that is independent of both the ozone amount and the SZA. The ratio of measured to clear-sky irradiance serves this purpose:

$$R(\lambda) = E_{\text{MS}}(\lambda, \theta) / E_{\text{CL}}(\lambda, \theta, \Omega) \quad (1)$$

where  $\lambda$  labels a wavelength band, and the calculation in the denominator uses the SZA  $\theta$  appropriate to the measurement and a column ozone value  $\Omega$  derived from the spectroradiometer data.

In an ideal circumstance, the value of the irradiance ratio would depend only on the influence of clouds and any other form of atmospheric opacity that affects the measurements but that is not included in the clear-sky calculations. In practice, however, several factors related to instrument performance can influence the measured irradiance. A detailed uncertainty budget for irradiance at three wavelengths, 310, 400 and 600 nm, appears in Bernhard et al. (2004). A substantial source of uncertainty, 2.1% (600 nm) to 2.7% (310 nm), centers on absolute calibration and stability. An additional uncertainty associated with the cosine response of the diffuser plate depends on details of the prevailing clouds, and for SZA = 70° this can be as large as 1.0% (310 nm) to 2.8% (600 nm) when the sky condition is unknown. The geophysical variations of interest in Sect. 4 of this paper can be of the same order as the above uncertainties. Fortunately, errors that are independent of time do not impact the primary conclusions. However, uncorrected drifts or discontinuities could be misconstrued as a linear trend over time, and the statistical analyses in Sect. 4 must acknowledge this possibility.

Figure 3a–b presents irradiance ratios measured in the 320–340 nm and 400–600 nm bands for the December 2001 solstice period, where the horizontal scale is day

**Solar irradiance at the Earth's surface**

J. E. Frederick and  
A. L. Hodge

Title Page

Abstract

Introduction

Conclusions

References

Tables

Figures



Back

Close

Full Screen / Esc

Printer-friendly Version

Interactive Discussion



Discussion Paper | Discussion Paper | Discussion Paper | Discussion Paper | Discussion Paper

**Solar irradiance at the Earth's surface**J. E. Frederick and  
A. L. Hodge

Title Page

Abstract

Introduction

Conclusions

References

Tables

Figures

◀

▶

◀

▶

Back

Close

Full Screen / Esc

Printer-friendly Version

Interactive Discussion



number measured from the start of the period. Figure 4a–b is the analogous plot for the December 2007 solstice. These figures illustrate the varying influence of cloud cover among different solstice periods, with the earlier time (Fig. 3) exhibiting less cloudiness than the latter (Fig. 4). Clouds over the South Pole tend to be thin, often covering only a fraction of the sky, and their rapid variability leads to fluctuations in surface irradiance over time scales that are very short compared to a solstice period. Irradiances both less than and greater than the clear sky value can occur during the span of several hours. A comparison of Fig. 3a with 3b or of Fig. 4a with 4b shows that fluctuations observed in different wavelength bands are highly correlated, but they differ in magnitude. When the irradiance ratios deviate from 1.0, the deviation for the 400–600 nm band is always greater, either positive or negative, than that at 320–340 nm.

The box plots for 320–340 nm and 400–600 nm in Fig. 5 further illustrate the wavelength dependence associated with cloudiness. These summarize the statistical properties of the entire dataset where the upper and lower boxes, respectively, identify the second and third quartiles of the measurements, and the horizontal line separating these boxes is the median. The vertical line segments with error bars similarly define the first and fourth quartiles, while the x-symbols denote outliers. The small squares at 0.94–0.95 for each wavelength are the mean irradiance ratios. Although these are virtually the same at both wavelengths shown, as well as for the 340–360 nm and 360–400 nm bands (not shown), the variability increases substantially with wavelength. Furthermore, irradiance ratios in excess of 1.0 are far more common in the 400–600 nm band than at 320–340 nm.

To further define the spectral character of the attenuations and enhancements provided by clouds, Fig. 6 plots the irradiance ratios at 320–340 nm versus those at 400–600 nm for the entire database. The line with a slope of 1.0 illustrates the case of no wavelength dependence and obviously deviates from the measurements which form an envelope of much smaller slope. A least squares fit to the individual points has the form  $R(320\text{--}340\text{ nm}) = (0.565 \pm 0.003) + (0.402 \pm 0.003)R(400\text{--}600\text{ nm})$  where the error bars are two standard errors, and the regression explains 67.6% of the variance.

This shows quantitatively that the 320–340 nm signal has much less variation in response to changing cloudiness than does that for 400–600 nm.

Figure 7a–b, for 320–340 nm and 400–600 nm, defines the multi-year behavior of the irradiance ratios as well as an index of the variability within each solstice period. The dots depict the mean irradiance ratio for each solstice period, while the error bars are plus and minus one standard deviation. The different degree of variability in the two wavelength bands is apparent from the widths of the error bars.

Several features of the dataset require an explanation grounded in a theoretical understanding of the processes at work. These are (1) irradiances larger than the clear-sky values are frequent occurrences, and (2) the variability in irradiance associated with cloudiness is greater in the visible than in the UV-A. The following section addresses these issues based on physical reasoning combined with a set of radiative transfer calculations that incorporate a simplified treatment of fractional cloudiness. The final topic of the paper involves interannual variability in cloudiness. The goal here is to determine whether the variations shown in Fig. 7 are seemingly random or whether there are systematic trends or possible links to solar activity.

### 3 Irradiances under partly cloudy skies: a theoretical analysis

Figure 6 shows that irradiances in excess of the clear sky value are common, particularly at 400–600 nm. A series of one-dimensional radiative transfer calculations based on the simplified fractional cloud cover formulation first presented by Frederick and Erlick (1995) provides an explanation for this behavior as well as for the wavelength dependence that appears when clouds are present. A number of previous studies have examined the wavelength dependent attenuation provided by clouds from both the empirical and theoretical standpoints (Seckmeyer et al., 1996; Frederick and Erlick, 1997; Kylling et al., 1997; Lindfors and Arola, 2008). The present work focuses specifically on effects associated with fractional cloud cover as opposed to a uniform cloud layer.

## Solar irradiance at the Earth's surface

J. E. Frederick and  
A. L. Hodge

Title Page

Abstract

Introduction

Conclusions

References

Tables

Figures

◀

▶

◀

▶

Back

Close

Full Screen / Esc

Printer-friendly Version

Interactive Discussion



**Solar irradiance at the Earth's surface**J. E. Frederick and  
A. L. Hodge

Title Page

Abstract

Introduction

Conclusions

References

Tables

Figures

◀

▶

◀

▶

Back

Close

Full Screen / Esc

Printer-friendly Version

Interactive Discussion



Consider a sky that is partly covered by clouds. Specifically, a fraction  $f_c$  of the upper hemisphere is obscured by clouds with albedo  $A_c$  and transmission  $1 - A_c$ . For ease of discussion we adopt the same cloud albedo for both direct and diffuse incident radiation, although this is not true in general. Assume that, as viewed from the location of a ground-based sensor, the solar disk is in the clear portion of the sky. The irradiance that strikes the sensor consists of a direct component, which is identical to what would exist under a clear sky, and a diffuse component that represents contributions from both the clear and cloudy portions of the sky.

Downward solar irradiance incident on the cloud tops consists of both a direct and a diffuse component, where scattering above the clouds determines their relative proportions. A fraction  $1 - A_c$  of the incident diffuse radiation is transmitted through the cloud. For  $A_c > 0$  this mechanism always acts to decrease the irradiance that ultimately reaches a ground-based sensor. Similarly, the direct component of solar irradiance incident on the cloud tops is partially reflected back upward and partially transmitted through the cloud, where a portion emerges as downward diffuse radiation. From this description, the direct solar beam influences the total irradiance received by the sensor in two ways. First, since the sun lies in the clear portion of the sky, the entire direct solar beam reaches the sensor. Second, a fraction of the direct solar irradiance is transmitted through the clouds, emerges as diffuse radiation, and some of this reaches the sensor. In some circumstances, this second contribution can increase the irradiance over what would exist under clear skies.

The backscattering of diffuse radiation incident on the cloud tops represents a loss of irradiance from the ground. But the transmission of direct radiation through the cloud, and its conversion to diffuse radiation in the process, represents a gain. If the gain in diffuse irradiance traceable to downward scattering of the direct solar beam in the clouds exceeds the loss from backscattering of diffuse radiation incident on the cloud tops, then the total irradiance measured at the ground will be greater than the value for clear skies.

Based on the above processes, measured irradiances in excess of the clear-sky



**Solar irradiance at the Earth's surface**J. E. Frederick and  
A. L. Hodge

Title Page

Abstract

Introduction

Conclusions

References

Tables

Figures

◀

▶

◀

▶

Back

Close

Full Screen / Esc

Printer-friendly Version

Interactive Discussion



value require the sky to be partly cloudy, with the solar disk in the clear portion of the sky as viewed from the sensor. This is a necessary, but not a sufficient, condition. As the ratio of direct to diffuse irradiance incident on the cloud top increases, the probability of an enhancement in ground-level irradiance over the clear-sky values also increases.

5 This implies that irradiance ratios greater than 1.0 should be more common at the longer wavelengths observed. Figure 5 shows this to be the case. Should the solar disk become obscured by cloudiness as seen from the sensor, the direct beam is lost, and the irradiance will drop to levels less than those for a clear sky.

10 Figure 8a–b, for the wavelength bands 320–340 nm and 400–600 nm, illustrates the processes at work. Each panel presents the irradiance ratio computed as a function of fractional cloudiness  $f_c$ , where the solar disk is in the clear portion of the sky. The ground albedo is set to  $A_G = 0$  in both cases so as to highlight the mechanism discussed above. The case  $f_c = 1$  corresponds to complete cloud cover except for a small break that coincides with the line of sight to the sun as viewed from the sensor. Each panel includes results for three cloud albedos,  $A_c = 0.5, 0.7$  and  $0.9$ .

15 A large ratio of direct to diffuse irradiance at the cloud top promotes surface irradiances greater than the clear-sky value, and this ratio is wavelength dependent as a simple result of Rayleigh scattering. This wavelength dependent effect is evident in comparing Fig. 8a and b, where irradiance ratios larger than 1.0 arise most readily in the 400–600 nm wavelength band. Figure 8a for 320–340 nm shows that when the cloud albedo is  $A_c = 0.5$  a small enhancement exists for all values of fractional cloudiness. When  $A_c = 0.7$  or  $0.9$  transmission through the cloud is restricted, and the surface irradiance is less than the clear-sky result. In the 400–600 nm band (Fig. 8b) the diffuse irradiance incident on the cloud top is relatively small compared to the direct component. The mechanisms discussed above now lead to an increase in ground-level irradiance with fractional cloudiness for cloud albedos of 0.5 and 0.7, where all values exceed the clear-sky irradiance. When the cloud albedo reaches 0.9, the radiation that emerges downward from the cloud base is always less than would exist under clear skies, and the effect is to reduce the irradiance received at the ground.

20

25

**Solar irradiance at the Earth's surface**J. E. Frederick and  
A. L. Hodge

Title Page

Abstract

Introduction

Conclusions

References

Tables

Figures

◀

▶

◀

▶

Back

Close

Full Screen / Esc

Printer-friendly Version

Interactive Discussion



A comparison of Fig. 8a and b for a cloud albedo of  $A_c = 0.7$  reveals an unexpected and interesting result. As fractional cloud cover increases, the ground-level irradiance for 400–600 nm increases, while that at 320–340 nm decreases. This demonstrates that even the sign of the change in irradiance for a specified change in cloudiness can depend on wavelength and details of the prevailing sky cover.

The above arguments considered only the direct and diffuse radiation incident on cloud tops. Another important mechanism for enhancing surface irradiance centers on the albedo  $A_G$  of the lower boundary. When  $A_G$  is large, as is the case at the South Pole, multiple reflections between the ground and cloud enhance the irradiance that reaches a sensor. Under conditions of fractional cloud cover, the solar disk may be visible as viewed from the ground-based sensor; however, the clouds will hide the disk as seen from other nearby locations. If fractional cloudiness  $f_c$  is small, a relatively large direct irradiance reaches the ground when averaged over the area of interest, and multiple reflections occur between the ground and cloud base. However, the small fractional cloud cover limits the magnitude of the resulting irradiance enhancement. As  $f_c$  increases, a larger cloud-base area backscatters upwelling radiation, but the increased area-averaged blockage of the solar disk acts to limit the amount of energy that penetrates beneath the cloud and is available for this reflection. The result is that the irradiance observed by a sensor increases with  $f_c$  up to some maximum, depending on the cloud albedo, and then can decline with further increases in fractional cloudiness.

Figure 9a–b is analogous to Fig. 8a–b except that the ground albedo is  $A_G = 0.98$ , typical of the Antarctic surface (Grenfell et al., 1994). Even under clear skies this large albedo produces significantly enhanced irradiances relative to the case  $A_G = 0.0$ . For the wavelength band 400–600 nm the increase is 8.2%, while at 320–340 nm the corresponding number is 38.5%. The larger clear-sky percentage increase at the shorter wavelengths arises from stronger Rayleigh backscattering of radiation previously reflected upward at the lower boundary.

The irradiance ratios in Fig. 9a–b display the behavior expected from the physical reasoning presented above. When fractional cloudiness exceeds 0.8 for the highest

cloud albedo ( $A_c = 0.9$ ) the solar energy beneath the cloud is severely limited and increases from multiple reflections between the ground and cloud base are inhibited. In this case, irradiance declines with further increases in  $f_c$ . Finally, Fig. 10a–b, for the wavelength bands 320–340 nm and 400–600 nm, illustrates the effect of the solar disk being obscured by clouds. The three curves in each panel depict irradiance ratios for cloud albedos of  $A_c = 0.5, 0.7$  and  $0.9$ , respectively, and the surface albedo is  $A_G = 0.98$  in all cases. Note the wavelength dependence in the attenuation, where the effect of clouds for 400–600 nm is usually exaggerated relative to that at 320–340 nm.

Figures 9 and 10 demonstrate that radiative transfer theory applied to partly-cloudy skies produces the wavelength-dependent attenuation and enhancement observed at the South Pole. Figure 11, based entirely on radiative transfer calculations, presents  $R(320\text{--}340\text{ nm})$  plotted against  $R(400\text{--}600\text{ nm})$ . The results are very similar to the analogous empirical plot in Fig. 6. A linear fit to the computed curve gives  $R(320\text{--}340\text{ nm}) = (0.589 \pm 0.011) + (0.430 \pm 0.010)R(400\text{--}600\text{ nm})$ , where the slope is only 7% larger than the value derived from Fig. 6.

#### 4 Long-term behavior of the irradiance ratios

This section considers relationships between the irradiance ratios and indices of inter-annual variability. The goal is to determine if the solar irradiance, as depicted in Fig. 7, contains systematic behavior over the time period of observation or if the year-to-year variation is random. Mean irradiance ratios for any solstice period characterize the net influence of clouds, and all other forms of variation not included in the clear-sky calculations, on solar irradiance at the ground. The analysis below considers two forms of long-term variability: (1) linear trends in time and (2) links to the solar cycle. The calendar year that contains December provides the measure of time, while we characterize the solar cycle by the mean 10.7 cm solar radio flux ( $F_{10.7}$ ) adjusted to 1.0 Astronomical Unit for each solstice period (NOAA National Geophysical Data Center, 2010). Figure 12 presents this indicator of solar activity for the period studied. Note

### Solar irradiance at the Earth's surface

J. E. Frederick and  
A. L. Hodge

Title Page

Abstract

Introduction

Conclusions

References

Tables

Figures

◀

▶

◀

▶

Back

Close

Full Screen / Esc

Printer-friendly Version

Interactive Discussion



that the value of  $F_{10.7}$  for the 2001 solstice period is unusually large.

To check for systematic long-term behavior in the dataset, Table 2 presents linear correlation coefficients ( $r$ ) between the mean irradiance ratios in each wavelength band and the year, as well as the probabilities ( $P$ ) that the correlations arise by chance. For future reference, the correlation between  $F_{10.7}$  and year appears as well. Based on the standard criterion of  $P < 0.05$ , the irradiance ratios and the 10.7 cm flux contain no significant linear trends over time, although some indication of a downward trend exists ( $P = 0.08$ ) in the 400–600 nm irradiance ratio. If we interpret the behavior as a linear change over time, it corresponds to a decrease of approximately  $1.5 \pm 1.6\%$  per decade, where the 95% confidence interval encompasses zero.

The hint of a downward trend in the visible band merits further attention. A systematic change in cloudiness would preferentially influence the 400–600 nm irradiance owing to the enhanced sensitivity of the signal at longer wavelengths. Furthermore, clouds over the South Pole induce erratic variability into the irradiance (Figs. 3 and 4), so that a long-term trend in cloudiness should appear in the irradiance ratios and their standard deviations. Specifically, unusually cloudy solstice periods would exhibit both small mean irradiance ratios and large standard deviations. However, statistical analysis shows no significant trend in the standard deviation for 400–600 nm, the correlation with year being  $r = 0.31$  with  $P = 0.23$ . The small correlations found for the other wavelength bands have even greater probabilities of arising by chance. Based on the information available, there is no compelling evidence of a trend in cloudiness over the South Pole for the time period studied. Statistically insignificant changes of the magnitude derived for 400–600 nm could arise by chance or from systematic errors in the dataset associated, for example, with replacement of instrument components.

Table 3 presents correlations between the mean irradiance ratios and the mean 10.7 cm solar radio flux, including probabilities that the relationships arise by chance. In view of the unusually large  $F_{10.7}$ -value for 2001, separate results appear based on all 17 solstice periods and on only 16 periods, with 2001 omitted. We regard the former case to be the primary result, but want to ensure that removal of one particular year

## Solar irradiance at the Earth's surface

J. E. Frederick and  
A. L. Hodge

Title Page

Abstract

Introduction

Conclusions

References

Tables

Figures

⏪

⏩

◀

▶

Back

Close

Full Screen / Esc

Printer-friendly Version

Interactive Discussion



does not alter the general conclusion. When all 17 years enter the calculation, significant positive correlations exist for each wavelength band, with  $P < 0.01$  in the ultraviolet and  $P < 0.05$  in the visible. With 2001 omitted, significant correlations remain at the 5% level of confidence. The absence of temporal trends in the irradiance ratios and in  $F_{10.7}$  (Table 2) ensures that the results in Table 3 do not arise from an accidental confounding of linear behavior over time with solar activity. The conclusion from Table 3 is that the measured irradiances reaching the South Polar surface included a component that varied in phase with the solar cycle over the time period studied. This result applies both to the ultraviolet and visible regions.

The significant correlations in Table 3 motivated application of a regression model with the form:

$$R(\lambda) = a_0 + a_1[F_{10.7} - \langle F_{10.7} \rangle]/100 + \varepsilon \quad (2)$$

where  $\langle F_{10.7} \rangle$  is the average 10.7 cm radio flux for the entire period of observation, the coefficients  $a_0$  and  $a_1$  are to be determined, and  $\varepsilon$  includes the unexplained variance. When all 17 solstice periods enter the regression  $\langle F_{10.7} \rangle = 115.3$ , and when the 2001 period is omitted  $\langle F_{10.7} \rangle = 108.1$ . Table 4 lists the estimated coefficients ( $a_0$ ,  $a_1$ ), their standard errors ( $\alpha_0$ ,  $\alpha_1$ ), and the percent of variance explained by the model based on all 17 years. Table 5 presents analogous results with data for 2001 removed. A 100 unit change in  $F_{10.7}$  leads to a best-estimate percentage change in irradiance ratio of  $100a_1/a_0$ , which corresponds approximately to the difference between solar maximum and solar minimum. The 95% confidence interval spans the range  $100(a_1 - 2\alpha_1)/a_0$  to  $100(a_1 + 2\alpha_1)/a_0$ . Table 6 presents these percentage changes.

When data from all years enter the regressions, the estimated irradiances for solar minimum are about 1.8% and 2.4% smaller than those at solar maximum for the wavelengths 320–400 nm (representing all three UV-A bands combined) and 400–600 nm respectively, with a larger error bar in the visible. The solar cycle remains, with a somewhat altered magnitude, when the regressions omit the 2001 solstice period. Here the estimated decrease from solar maximum to solar minimum is about 1.5% for 320–400 nm and 3.5% for 400–600 nm, again with a larger error bar in the visible. We regard

**Solar irradiance at the Earth's surface**J. E. Frederick and  
A. L. Hodge

Title Page

Abstract

Introduction

Conclusions

References

Tables

Figures



Back

Close

Full Screen / Esc

Printer-friendly Version

Interactive Discussion



**Solar irradiance at the Earth's surface**J. E. Frederick and  
A. L. Hodge

Title Page

Abstract

Introduction

Conclusions

References

Tables

Figures

◀

▶

◀

▶

Back

Close

Full Screen / Esc

Printer-friendly Version

Interactive Discussion



numbers based on all 17 solstice periods as the best estimates, but the persistence of a solar cycle dependence when data for 2001 are omitted indicates the robustness of the result. If these changes have a geophysical or solar origin, they must arise from (1) variations in the transmission of the South Polar atmosphere over the solar cycle during the time period studied, (2) variations in the extraterrestrial solar irradiance, which are implicit in the spectroradiometer measurements but are not included in the clear-sky calculations, or (3) a combination of both mechanisms. Alternate interpretations are (1) an uncorrected error in the measurements has an accidental correlation with the solar cycle or (2) the correlation is real in the mathematical sense but does not arise from a causal physical link.

One potential geophysical mechanism for changes in atmospheric transmission from one solstice season to the next involves cloudiness. The possibility that clouds are linked to solar activity has appeared in the literature, although the concept is controversial and conflicting results exist (Svensmark, 1998, 2007; Sloan and Wolfendale, 2008). As noted previously, clouds over the South Pole vary erratically. Hence, one expects differences in cloudiness between solstice seasons to appear both as a change in the mean value of  $R(\lambda)$  as well as in its standard deviation. If the correlations between  $R(\lambda)$  and  $F_{10.7}$  arise from rapidly varying cloudiness whose details change from year-to-year over the solar cycle, then a correlation should also exist between the standard deviations and  $F_{10.7}$ . Table 7 presents these correlation coefficients. When all 17 years enter the regressions, there is clearly no link between the standard deviations and the solar cycle. When data for 2001 are omitted, the conclusion is less obvious, although with  $P < 0.05$  as the standard, no significant relationships appear. We conclude that inter-annual changes in the short-term variability of South Polar clouds are not the origin of the correlations in Tables 4 and 5.

Variability in the extraterrestrial solar irradiance provides an obvious explanation for the correlations in Table 3, although the estimated magnitudes are not necessarily consistent with current understanding. The space-based spectral irradiance data of Harder et al. (2009) show a decrease in band-integrated 300–400 nm extraterrestrial

**Solar irradiance at the Earth's surface**J. E. Frederick and  
A. L. Hodge

Title Page

Abstract

Introduction

Conclusions

References

Tables

Figures

◀

▶

◀

▶

Back

Close

Full Screen / Esc

Printer-friendly Version

Interactive Discussion



irradiance of about 0.5–0.6% during part of the declining phase of the most recent solar cycle, although the period of the measurements was limited to April 2004 to the end of 2007. Figure 12 shows only a modest decrease in  $F_{10.7}$  over this interval. Based on this, a decrease of 1.5% or 1.8% between solar maximum and solar minimum at the ultraviolet wavelengths analyzed here, as inferred from Table 6, appears large but plausible. Harder et al. (2009) note that their spectral ultraviolet measurements show nearly a factor of 10 larger variation than produced by the model of Lean et al. (1997), which is based on earlier satellite observations. If we adopt estimates from the model of Lean et al. (1997), the irradiance variations inferred from the South Polar data appear far too large to be of extraterrestrial origin.

The data of Harder et al. (2009) also indicate an unexpected increase in the visible 400–691 nm integrated irradiance over the same portion of the declining phase of the solar cycle. The magnitude of the increase is roughly 0.1–0.2%, where the exact percentage depends on how one selects the baseline during a time of rapid irradiance variability during 2004. Both the sign and the magnitude of the South Polar visible surface variation deduced here disagree with these extraterrestrial observations. The regression based on 17 years of data produces a decrease in 400–600 nm surface irradiance of 2.4% from solar maximum to solar minimum, with an uncertainty range of 0.5–4.3%. These percentages correspond to a decline in energy flux striking a horizontal surface at the ground of about  $3.4 \text{ W m}^{-2}$ , with an uncertainty range of 0.7–6.1  $\text{W m}^{-2}$  for a SZA near 67 degrees. Except perhaps for the very low end of the error range, these numbers are unacceptably large to interpret as being extraterrestrial. Even if one ignores the problem with the phase of the variation relative to the data of Harder et al. (2009), only numbers near the lower limit of the range are compatible with measured decreases in the Solar Constant of about 0.1%, or 1.3  $\text{W m}^{-2}$ , from solar maximum to solar minimum (e.g. Cahalan et al., 2010).

Rapidly varying clouds provide a readily detected attenuation of incoming radiation, but this work showed that South Polar clouds are not obviously correlated with the solar cycle. However, other contributors to the polar atmospheric opacity are conceivable.



For example, persistent layers of scatterers such as ice crystals, which are too thin to appear as a readily-seen cloud, could exert a weak influence on the irradiance ratios. Such thin scattering layers could exist over the South Pole, and the attenuation they provide might have varied systematically on the time scale of the 11-year solar cycle during the period of the irradiance measurements. This hypothesis, although speculative, could explain the observed variability in ground-level solar irradiance, including the fact that the best estimate of the percent variation in the visible is larger than that in the UV-A.

## 5 Conclusions

Clouds over the South Pole act both to attenuate and to enhance solar irradiance observed by a ground-based sensor. Averaged over the entire observing period, the overall effect of South Polar clouds is a small attenuation, with the mean measured irradiance being about 5–6% less than the clear-sky value for wavelengths between 320 and 600 nm. The fractional attenuation or enhancement at any instant of time is wavelength dependent, where the percent deviation from the clear-sky irradiance at 400–600 nm is typically 2.5 times that in the near ultraviolet at 320–340 nm. The occurrence of irradiances in excess of the clear-sky values and the observed wavelength dependence are consistent with radiative transfer calculations for a high-albedo lower surface, fractional cloud cover with the cloud albedo being independent of wavelength, and Rayleigh scattering.

With a 95% confidence level as the criterion, the mean irradiance ratios and their standard deviations show no linear dependence on year over solstice periods from 1992 to 2008. This indicates the absence of a trend in cloudiness during the duration of the measurements. However, significant correlations exist between irradiance ratios at all wavelengths studied and the 10.7 cm solar radio flux, where the quantities are averaged over individual solstice periods. Regressions based on all 17 solstice periods indicate approximate 1.8% and 2.4% decreases in ground-level irradiance for the

## Solar irradiance at the Earth's surface

J. E. Frederick and  
A. L. Hodge

Title Page

Abstract

Introduction

Conclusions

References

Tables

Figures



Back

Close

Full Screen / Esc

Printer-friendly Version

Interactive Discussion





wavelength regions 320–400 nm and 400–600 nm, respectively, from solar maximum to solar minimum. The associated uncertainty ranges are approximately 0.8–2.7% for the UV-A and 0.5%–4.3% for the visible.

Changes in extraterrestrial irradiance over the solar cycle surely contribute a portion of the variability deduced at the polar surface for the 320–400 nm region, although the magnitude of this contribution is uncertain. However, the inferred solar cycle dependence in the 400–600 nm visible band is too large to be of extraterrestrial origin unless one adopts values at the lowest end of the error range. Uncorrected instrument drifts and discontinuities can always introduce artifacts into a dataset. However, for this to explain the observed behavior, any such unknown problems must have a spurious correlation with the solar cycle. Given the small magnitude of the inferred changes, the uncertainties in the measurements and the limited duration of the dataset, a confirmation of the solar cycle effect based on independent data would be of value.

*Acknowledgements.* Support for instrument operation and data processing was provided by the National Science Foundation under prime award number OPP-0000373 granted to Biospherical Instruments, Inc. via subcontracts from Raytheon Polar Services Company. The authors thank Guoyong Wen for valuable discussions concerning the extraterrestrial solar irradiance and Germar Bernhard for a thorough and critical reading of the original manuscript.

## References

- Bernhard, G. C., Booth, C. R., and McPeters, R. D.: Calculation of total column ozone from global UV spectra at high latitudes, *J. Geophys. Res.-Oc. Atm.*, 108, D17, doi:10.1029/2003JD003450.
- Bernhard, G., Booth, C. R., and Ehamjian, J. C.: Version 2 data of the National Science Foundation's ultraviolet radiation monitoring network: South Pole, *J. Geophys. Res.-Oc. Atm.*, 109, D21207, doi:10.1029/2004JD004937, 2004.
- Booth, C. R., Lucas, T. B., Morrow, J. H., Weiler, C. S., and Penhale, P. A.: The United States National Science Foundation's polar network for monitoring ultraviolet radiation, in: *Ultraviolet Radiation in Antarctica: Measurements and Biological Effects*, edited by: Weiler, C. S.,

## Solar irradiance at the Earth's surface

J. E. Frederick and  
A. L. Hodge

Title Page

Abstract

Introduction

Conclusions

References

Tables

Figures



Back

Close

Full Screen / Esc

Printer-friendly Version

Interactive Discussion



## Solar irradiance at the Earth's surface

J. E. Frederick and  
A. L. Hodge

Title Page

Abstract

Introduction

Conclusions

References

Tables

Figures

◀

▶

◀

▶

Back

Close

Full Screen / Esc

Printer-friendly Version

Interactive Discussion



and Penhale, P. A., *Antarc. Res. Ser.*, 62, , American Geophysical Union, Washington, DC, 17–37, 1994.

Cahalan, R. F., Wen, G., Harder, J. W., and Pilewskie, P.: Temperature responses to spectral solar variability on decadal time scales, *Geophys. Res. Lett.*, 37, L07705, doi:10.1029/2009GL041898, 2010.

Frederick, J. E. and Erlick, C.: Trends and interannual variability in erythemal irradiance, 1978–1993, *Photochem. Photobiol.*, 62, 476–484, 1995.

Frederick, J. E. and Erlick, C.: The attenuation of sunlight by high-latitude clouds: spectral dependence and its physical mechanisms, *J. Atmos. Sci.*, 54, 2813–2819, 1997.

Fröhlich, C.: Evidence of a long-term trend in total solar irradiance, *Astron. Astrophys.*, 501, L27–30, doi:10.1051/0004-6361/200912318, 2009.

Gough, D. O.: Solar interior structure and luminosity variations, *Solar Phys.*, 74, 21–34, 1981.

Grenfell, T. C., Warren, S. G., and Mullen, P. C.: Reflection of solar radiation by the Antarctic snow surface at ultraviolet, visible, and near infrared wavelengths, *J. Geophys. Res.-Oc. Atm.*, 99, D9, 18669–18684, 1994.

Harder, J. W., Fontenla, J. M., Pilewskie, P., and Richard, E. K: Trends in solar spectral irradiance variability in the visible and infrared, *Geophys. Res. Lett.*, 36, doi:10.1029/2008GL036797, 2009.

Kylling, A., Albold, A., and Seckmeyer, G.: Transmittance of a cloud is wavelength dependent in the UV-range: physical interpretation, *Geophys. Res. Lett.*, 24, 397–400, 1997.

Lean, J. L., Rottman, G. J., Kyle, H. L., Woods, T. N., Hickey, J. R., and Puga, L. C.: Detection and parameterization of variations in solar mid- and near-ultraviolet radiation (200–400 nm), *J. Geophys. Res.-Oc. Atm.*, 102, 29939–29956, 1997.

Lindfors, A. and Arola, A.: On the wavelength-dependent attenuation of UV radiation by clouds, *Geophys. Res. Lett.*, 35, L05806, doi:10.1029/2007GL032571, 2008.

Molina, L. T. and Molina, M. J.: Absolute absorption cross-sections of ozone in the 185 to 350 nm wavelength range, *J. Geophys. Res.-Oc. Atm.*, 91, 14501–14508, 1986.

NOAA National Geophysical Data Center: <http://www.ngdc.noaa.gov/>, access: 15 September 2010.

Seckmeyer, G., Erb, R., and Albold, A.: Transmission of a cloud is wavelength dependent in the UV-range, *Geophys. Res. Lett.*, 23, 2753–2755, 1996.

Sloan, T. and Wolfendale, A. W.: Testing the proposed causal link between cosmic rays and cloud cover, *Environ. Res. Lett.*, 3, 024001, doi:10.1088/1748-9326/3/2/024001, 2008.

Svensmark, H.: Influence of cosmic rays on Earth's climate, Phys. Rev. Lett., 81, 5027–5030, doi:10.1103/PhysRevLett.81.5027, 1998.

Svensmark, H.: Cosmoclimate: a new theory emerges, Astron. Geophys., 48(1), 1.18–1.24, 2007.

5 Wild, M.: Global dimming and brightening: A review, J. Geophys. Res.-Oc. Atm., 114, D00D16, doi:10.1029/2008JD011470, 2009.

Willson, R. C.: Total solar irradiance trend during solar cycles 21 and 22, Science, 277, 163–165, 1997.

10 World Meteorological Organization: Atmospheric Ozone 1985, Global Ozone Research and Monitoring Project Report No. 16, World Meteorological Organization, Geneva, Switzerland, 1985.

ACPD

10, 25871–25908, 2010

## Solar irradiance at the Earth's surface

J. E. Frederick and  
A. L. Hodge

Title Page

Abstract

Introduction

Conclusions

References

Tables

Figures

◀

▶

◀

▶

Back

Close

Full Screen / Esc

Printer-friendly Version

Interactive Discussion



## Solar irradiance at the Earth's surface

J. E. Frederick and  
A. L. Hodge

**Table 1.** Statistical characteristics of the irradiance dataset<sup>1</sup>.

Wavelength band (nm)	Mean measured irradiance: $\langle E_{MS} \rangle$ ( $W m^{-2}$ )	Fractional variability <sup>2</sup> : $\sigma(E_{MS})/\langle E_{MS} \rangle$	Mean clear-sky irradiance: $\langle E_{CL} \rangle$ ( $W m^{-2}$ )	Fractional variability <sup>2</sup> : $\sigma(E_{CL})/\langle E_{CL} \rangle$
320–340	5.30	0.050	5.62	0.022
340–360	6.53	0.056	6.93	0.017
360–400	15.37	0.068	16.39	0.016
400–600	133.8	0.093	141.5	0.016

<sup>1</sup>Based on 37 173 data points at each wavelength.

<sup>2</sup>Ratio of standard deviation to the mean irradiance.

Title Page

Abstract

Introduction

Conclusions

References

Tables

Figures

◀

▶

◀

▶

Back

Close

Full Screen / Esc

Printer-friendly Version

Interactive Discussion



**Solar irradiance at the Earth's surface**J. E. Frederick and  
A. L. Hodge**Table 2.** Correlation of mean irradiance ratios with year (based on 17 Solstice Periods, 1992 through 2008).

Variable	Correlation with year ( $r$ )	Probability by chance ( $P$ )
$R(320\text{--}340\text{ nm})$	−0.16	0.54
$R(340\text{--}360\text{ nm})$	−0.20	0.45
$R(360\text{--}400\text{ nm})$	−0.20	0.45
$R(400\text{--}600\text{ nm})$	−0.43	0.08
$F_{10.7}$	−0.12	0.64

Title Page

Abstract

Introduction

Conclusions

References

Tables

Figures

◀

▶

◀

▶

Back

Close

Full Screen / Esc

Printer-friendly Version

Interactive Discussion



**Solar irradiance at the Earth's surface**J. E. Frederick and  
A. L. Hodge**Table 3.** Correlation of mean irradiance ratios  $R(\lambda)$  with the 10.7 cm solar radio flux.

Variable	Correlation with $F_{10.7}$ ( $r$ ) (17 years)	Probability by chance ( $P$ ) (17 years)	Correlation with $F_{10.7}$ ( $r$ ) (Omit 2001)	Probability by chance ( $P$ ) (Omit 2001)
$R(320\text{--}340\text{ nm})$	0.74	0.001	0.54	0.030
$R(340\text{--}360\text{ nm})$	0.72	0.001	0.54	0.030
$R(360\text{--}400\text{ nm})$	0.62	0.008	0.54	0.032
$R(400\text{--}600\text{ nm})$	0.55	0.021	0.61	0.012

Title Page

Abstract

Introduction

Conclusions

References

Tables

Figures

⏪

⏩

◀

▶

Back

Close

Full Screen / Esc

Printer-friendly Version

Interactive Discussion



## Solar irradiance at the Earth's surface

J. E. Frederick and  
A. L. Hodge

**Table 4.** Results from the regression model:  $R(\lambda) = a_0 + a_1[(F_{10.7} - \langle F_{10.7} \rangle)/100] + \varepsilon$  (applied to all 17 Solstice Periods).

Wavelength band (nm)	$a_0$	$\alpha_0^1$	$a_1$	$\alpha_1^1$	%Variance explained
320–340	0.944	0.00201	0.0190	0.00451	54.1
340–360	0.942	0.00174	0.0158	0.00391	52.3
360–400	0.938	0.00220	0.0151	0.00494	38.4
400–600	0.948	0.00399	0.0231	0.00896	30.6

<sup>1</sup> $\alpha_i$  = standard error of coefficient  $a_i, i = 1, 2$ .

[Title Page](#)
[Abstract](#)
[Introduction](#)
[Conclusions](#)
[References](#)
[Tables](#)
[Figures](#)
[Back](#)
[Close](#)
[Full Screen / Esc](#)
[Printer-friendly Version](#)
[Interactive Discussion](#)


## Solar irradiance at the Earth's surface

J. E. Frederick and  
A. L. Hodge

**Table 5.** Results from the regression model:  $R(\lambda) = a_0 + a_1[(F_{10.7} - \langle F_{10.7} \rangle)/100] + \varepsilon$  (applied to 16 Solstice Periods, Omitting Data for 2001).

Wavelength band (nm)	$a_0$	$\alpha_0^1$	$a_1$	$\alpha_1^1$	%Variance explained
320–340	0.942	0.00203	0.0142	0.00587	29.4
340–360	0.940	0.00179	0.0125	0.00517	29.3
360–400	0.937	0.00234	0.0161	0.00677	28.8
400–600	0.947	0.00400	0.0333	0.0116	37.2

<sup>1</sup> $\alpha_i$  = standard error of coefficient  $a_i, i = 1, 2$ .

[Title Page](#)
[Abstract](#)
[Introduction](#)
[Conclusions](#)
[References](#)
[Tables](#)
[Figures](#)
[Back](#)
[Close](#)
[Full Screen / Esc](#)
[Printer-friendly Version](#)
[Interactive Discussion](#)




**Solar irradiance at the Earth's surface**

J. E. Frederick and  
A. L. Hodge

**Table 6.** Percentage change in irradiance ratio for a 100-Unit Change in 10.7 cm solar radio flux (based on the regression models).

Wavelength band (nm)	Best estimate % change in $R(\lambda)$ (17 years)	95% Confidence range (17 years)	Best estimate % change in $R(\lambda)$ (Omit 2001)	95% Confidence range (Omit 2001)
320–340	2.0	1.0–3.0	1.5	0.3–2.8
340–360	1.7	0.9–2.5	1.3	0.2–2.4
360–400	1.6	0.6–2.6	1.7	0.3–3.2
400–600	2.4	0.5–4.3	3.5	1.1–6.0

Title Page

Abstract

Introduction

Conclusions

References

Tables

Figures



Back

Close

Full Screen / Esc

Printer-friendly Version

Interactive Discussion



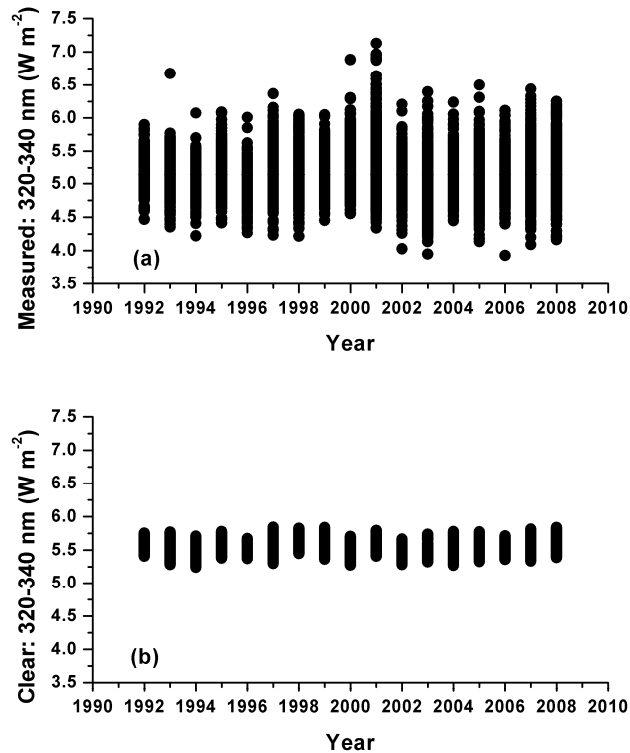
## Solar irradiance at the Earth's surface

J. E. Frederick and  
A. L. Hodge

**Table 7.** Correlation of standard deviations of irradiance ratios ( $\sigma$ ) with the 10.7 cm solar radio flux.

Variable	Correlation with $F_{10.7}$ ( $r$ ) (17 years)	Probability by Chance ( $P$ ) (17 years)	Correlation with $F_{10.7}$ ( $r$ ) (Omit 2001)	Probability by Chance ( $P$ ) (Omit 2001)
$\sigma$ (320–340 nm)	−0.16	0.55	−0.45	0.08
$\sigma$ (340–360 nm)	−0.18	0.49	−0.47	0.07
$\sigma$ (360–400 nm)	−0.13	0.61	−0.41	0.11
$\sigma$ (400–600 nm)	−0.17	0.52	−0.41	0.12

[Title Page](#)
[Abstract](#)
[Introduction](#)
[Conclusions](#)
[References](#)
[Tables](#)
[Figures](#)
[Back](#)
[Close](#)
[Full Screen / Esc](#)
[Printer-friendly Version](#)
[Interactive Discussion](#)

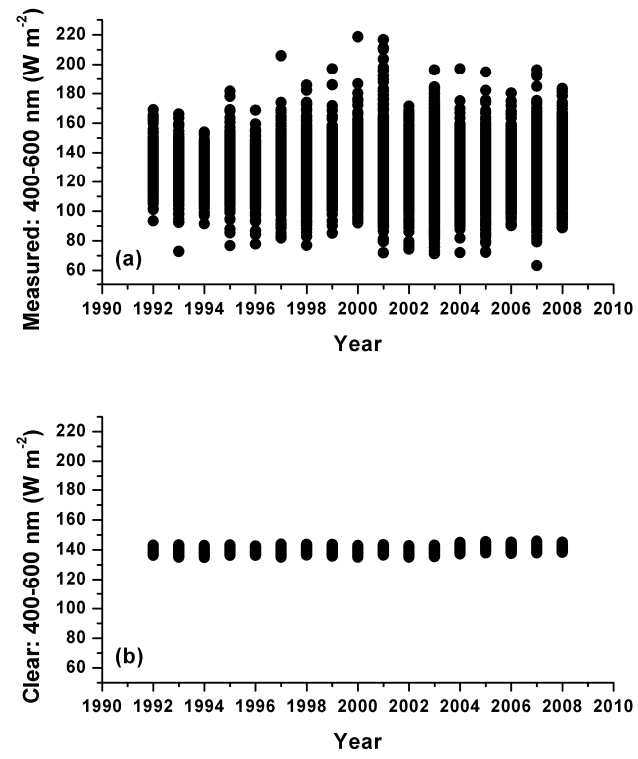

**Solar irradiance at the Earth's surface**J. E. Frederick and  
A. L. Hodge

**Fig. 1.** The irradiance dataset for the wavelength band 320–340 nm covering 17 solstice periods, 1992–2008: **(a)** Measured values. **(b)** Computed clear-sky values.

[Title Page](#)[Abstract](#)[Introduction](#)[Conclusions](#)[References](#)[Tables](#)[Figures](#)[◀](#)[▶](#)[◀](#)[▶](#)[Back](#)[Close](#)[Full Screen / Esc](#)[Printer-friendly Version](#)[Interactive Discussion](#)

## Solar irradiance at the Earth's surface

J. E. Frederick and  
A. L. Hodge



**Fig. 2.** The irradiance dataset for the wavelength band 400–600 nm covering 17 solstice periods, 1992–2008: **(a)** Measured values. **(b)** Computed clear-sky values.

Title Page

Abstract Introduction

Conclusions References

Tables Figures

◀ ▶

◀ ▶

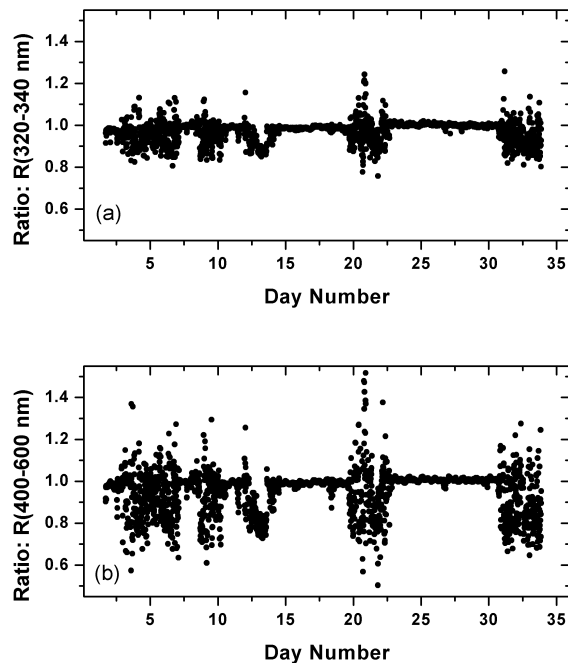
Back Close

Full Screen / Esc

Printer-friendly Version

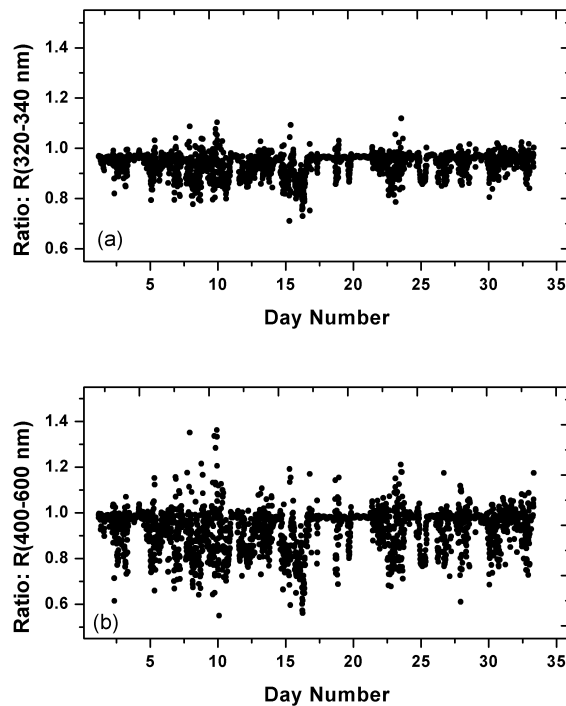
Interactive Discussion



**Solar irradiance at the Earth's surface**J. E. Frederick and  
A. L. Hodge

**Fig. 3.** Irradiance ratios for the solstice period December 2001 to January 2002, a relatively clear period: **(a)** 320–340 nm wavelength band. **(b)** 400–600 nm wavelength band. Day number 1 is 7 December 2001.

[Title Page](#)[Abstract](#)[Introduction](#)[Conclusions](#)[References](#)[Tables](#)[Figures](#)[◀](#)[▶](#)[◀](#)[▶](#)[Back](#)[Close](#)[Full Screen / Esc](#)[Printer-friendly Version](#)[Interactive Discussion](#)

**Solar irradiance at the Earth's surface**J. E. Frederick and  
A. L. Hodge

**Fig. 4.** Irradiance ratios for the solstice period December 2007 to January 2008, a relatively cloudy period: **(a)** 320–340 nm wavelength band. **(b)** 400–600 nm wavelength band. Day number 1 is 7 December 2007.

Title Page

Abstract

Introduction

Conclusions

References

Tables

Figures

◀

▶

◀

▶

Back

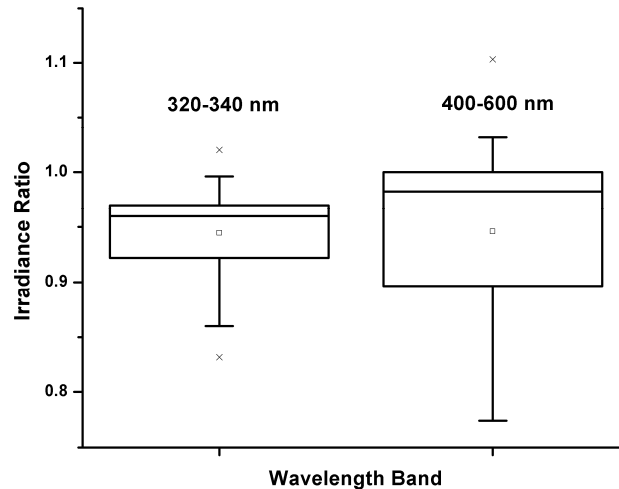
Close

Full Screen / Esc

Printer-friendly Version

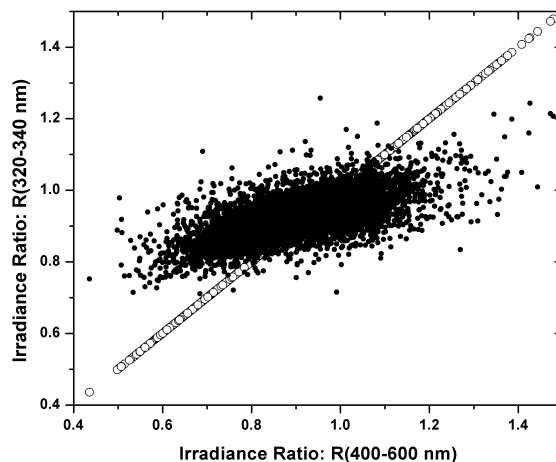
Interactive Discussion



**Solar irradiance at the Earth's surface**J. E. Frederick and  
A. L. Hodge

**Fig. 5.** Box plots of all irradiance ratios for the 320–340 nm and 400–600 nm wavelength bands. The upper and lower boxes, respectively, for each wavelength define the second and third quartiles of the measurements. The upper and lower vertical lines, respectively, define the first and fourth quartiles. Small squares in the third quartile for each wavelength represent means, and the x-symbols are outliers.

[Title Page](#)[Abstract](#)[Introduction](#)[Conclusions](#)[References](#)[Tables](#)[Figures](#)[◀](#)[▶](#)[◀](#)[▶](#)[Back](#)[Close](#)[Full Screen / Esc](#)[Printer-friendly Version](#)[Interactive Discussion](#)

**Solar irradiance at the Earth's surface**J. E. Frederick and  
A. L. Hodge

**Fig. 6.** Dark circles denote measured irradiance ratios for 320–340 nm plotted against those for 400–600 nm, showing the wavelength dependence in the attenuation or enhancement in solar irradiance associated with South Polar clouds. The open circles indicate a hypothetical case of no wavelength dependence.

Title Page

Abstract

Introduction

Conclusions

References

Tables

Figures

◀

▶

◀

▶

Back

Close

Full Screen / Esc

Printer-friendly Version

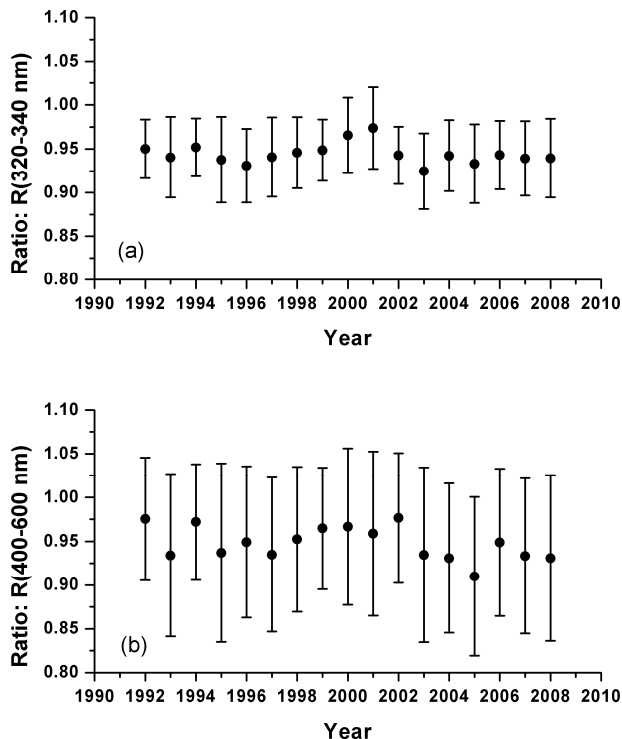
Interactive Discussion





**Solar irradiance at the Earth's surface**

J. E. Frederick and  
A. L. Hodge



**Fig. 7.** Statistical summary of irradiance ratios for each solstice period: Dots are mean irradiance ratios. Error bars are plus and minus one standard deviation and indicate the variability associated with cloudiness. **(a)** 320–340 nm wavelength band. **(b)** 400–600 nm wavelength band.

Title Page

Abstract Introduction

Conclusions References

Tables Figures

◀ ▶

◀ ▶

Back Close

Full Screen / Esc

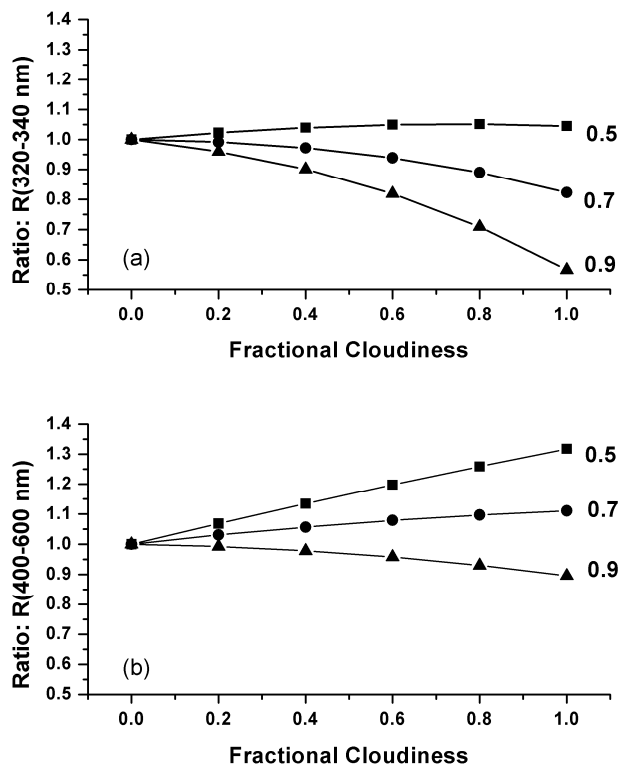
Printer-friendly Version

Interactive Discussion



## Solar irradiance at the Earth's surface

J. E. Frederick and  
A. L. Hodge

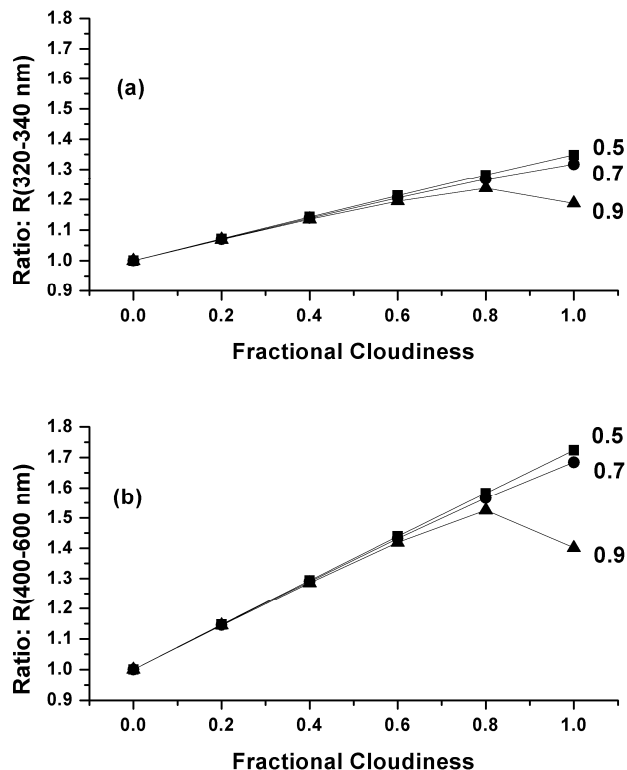


**Fig. 8.** Computed irradiance ratios as functions of fractional cloudiness for cloud albedos of  $A_c = 0.5, 0.7$  and  $0.9$ . The solar disk is not obscured by clouds, and the ground albedo is  $A_G = 0.0$ . **(a)** 320–340 nm wavelength band. **(b)** 400–600 nm wavelength band.

[Title Page](#)
[Abstract](#)
[Introduction](#)
[Conclusions](#)
[References](#)
[Tables](#)
[Figures](#)
[◀](#)
[▶](#)
[◀](#)
[▶](#)
[Back](#)
[Close](#)
[Full Screen / Esc](#)
[Printer-friendly Version](#)
[Interactive Discussion](#)


**Solar irradiance at the Earth's surface**

J. E. Frederick and  
A. L. Hodge



**Fig. 9.** Computed irradiance ratios as functions of fractional cloudiness for cloud albedos of  $A_c = 0.5, 0.7$  and  $0.9$ . The solar disk is not obscured by clouds, and the ground albedo is  $A_G = 0.98$ . **(a)** 320–340 nm wavelength band. **(b)** 400–600 nm wavelength band.

Title Page

Abstract

Introduction

Conclusions

References

Tables

Figures

◀

▶

◀

▶

Back

Close

Full Screen / Esc

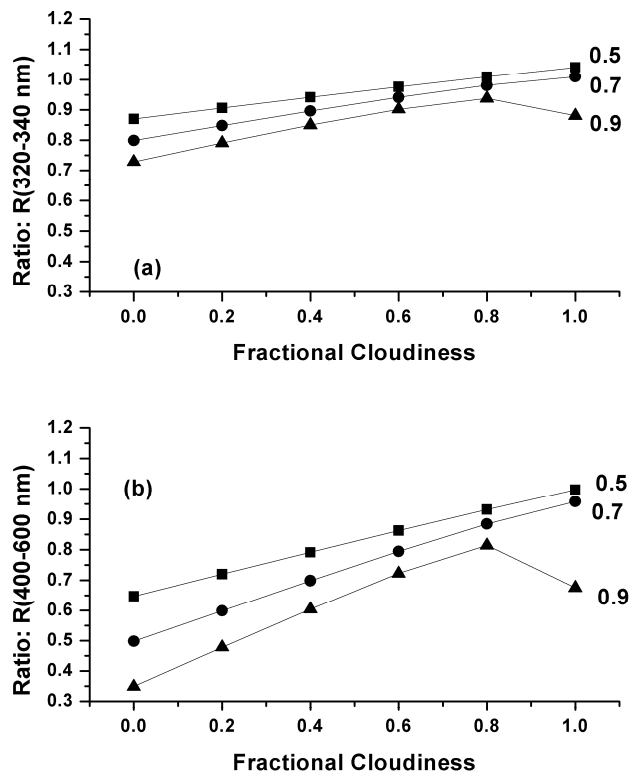
Printer-friendly Version

Interactive Discussion



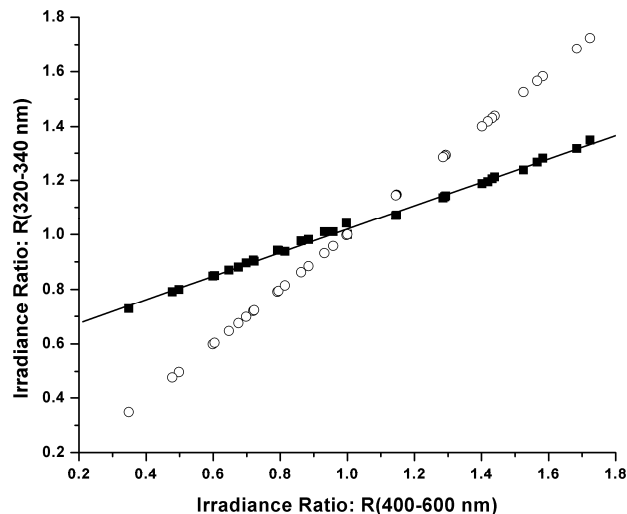
## Solar irradiance at the Earth's surface

J. E. Frederick and  
A. L. Hodge



**Fig. 10.** Computed irradiance ratios as functions of fractional cloudiness for cloud albedos of  $A_c = 0.5, 0.7$  and  $0.9$ . The solar disk is obscured by clouds, and the ground albedo is  $A_G = 0.98$ . **(a)** 320–340 nm wavelength band. **(b)** 400–600 nm wavelength band.

[Title Page](#)
[Abstract](#)
[Introduction](#)
[Conclusions](#)
[References](#)
[Tables](#)
[Figures](#)
[◀](#)
[▶](#)
[◀](#)
[▶](#)
[Back](#)
[Close](#)
[Full Screen / Esc](#)
[Printer-friendly Version](#)
[Interactive Discussion](#)


**Solar irradiance at the Earth's surface**J. E. Frederick and  
A. L. Hodge

**Fig. 11.** Computed irradiance ratios for 320–340 nm plotted against those for 400–600 nm, showing the wavelength dependence in the attenuation or enhancement in solar irradiance associated with clouds as produced by theory. Open circles define the case of no wavelength dependence. The solid line is a fit to radiative transfer calculations indicated by squares.

Title Page

Abstract

Introduction

Conclusions

References

Tables

Figures

◀

▶

◀

▶

Back

Close

Full Screen / Esc

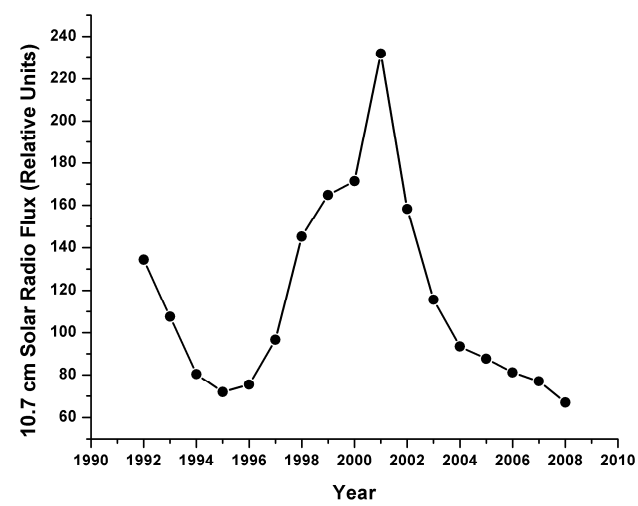
Printer-friendly Version

Interactive Discussion



## Solar irradiance at the Earth's surface

J. E. Frederick and  
A. L. Hodge



**Fig. 12.** Solar 10.7 cm radio flux in relative units: Points are means of daily measured values for each 30–35 day solstice period.

Title Page

Abstract

Introduction

Conclusions

References

Tables

Figures

◀

▶

◀

▶

Back

Close

Full Screen / Esc

Printer-friendly Version

Interactive Discussion

