

**Chemical
composition and
mixing-state of ice
residuals**

M. Ebert et al.

Chemical composition and mixing-state of ice residuals sampled within mixed phase clouds

M. Ebert¹, A. Worringen¹, N. Benker¹, S. Mertes², E. Weingartner³, and S. Weinbruch¹

¹Environmental Mineralogy, Institute of Applied Geosciences, Technical University Darmstadt, Schnittspahnstr. 9, 64287 Darmstadt, Germany

²Institute for Tropospheric Research, 04318 Leipzig, Germany

³Paul Scherrer Institut, Laboratory of Atmospheric Chemistry, 5232 Villigen, Switzerland

Received: 30 August 2010 – Accepted: 20 September 2010 – Published: 12 October 2010

Correspondence to: M. Ebert (mebert@geo.tu-darmstadt.de)

Published by Copernicus Publications on behalf of the European Geosciences Union.

Title Page

Abstract

Introduction

Conclusions

References

Tables

Figures

⏪

⏩

◀

▶

Back

Close

Full Screen / Esc

Printer-friendly Version

Interactive Discussion

Abstract

During an intensive campaign at the high alpine research station Jungfraujoch, Switzerland, in February/March 2006 ice particle residuals within mixed-phase clouds were sampled using the Ice-counterflow virtual impactor (Ice-CVI). Size, morphology, chemical composition, mineralogy and mixing state of the ice residual and the interstitial (i.e., non-activated) aerosol particles were analyzed by scanning and transmission electron microscopy. Ice nuclei (IN) were identified from the significant enrichment of particle groups in the ice residual (IR) samples relative to the interstitial aerosol. In terms of number lead-bearing particles are enriched by a factor of approximately 25, complex internal mixtures with silicates or metal oxides as major components by a factor of 11, and mixtures of secondary aerosol and soot (C-O-S particles) by a factor of 2. Other particle groups (sulfates, sea salt, Ca-rich particles, external silicates) observed in the ice-residual samples cannot be assigned unambiguously as IN. Between 9 and 24% of all IR are Pb-bearing particles. Pb was found as major component in around 10% of these particles (PbO, PbCl₂). In the other particles, Pb was found as some 100 nm sized agglomerates consisting of 3–8 nm sized primary particles (PbS, elemental Pb). C-O-S particles are present in the IR at an abundance of 17–27%. The soot component within these particles is strongly aged. Complex internal mixtures occur in the IR at an abundance of 9–15%. Most IN identified at the Jungfraujoch station are internal mixtures containing anthropogenic components (either as main or minor constituent), and it is concluded that admixture of the anthropogenic component is responsible for the increased IN efficiency within mixed phase clouds. The mixing state appears to be a key parameter for the ice nucleation behaviour that cannot be predicted from the separate components contained within the individual particles.

Chemical composition and mixing-state of ice residuals

M. Ebert et al.

Title Page

Abstract

Introduction

Conclusions

References

Tables

Figures

⏪

⏩

◀

▶

Back

Close

Full Screen / Esc

Printer-friendly Version

Interactive Discussion



1 Introduction

The properties and formation processes of mixed phase clouds are poorly understood (Penner et al., 2001). Increased ice nuclei concentrations appear to decrease cloud lifetime and cloud cover leading to a warming of the atmosphere (Lohmann and Diehl, 2006). The theoretical treatment of ice nucleation is complicated by the fact that this process takes place under non-equilibrium conditions. The liquid and the vapour phases can exist metastably as supercooled water, respectively supersaturated vapour. Ice formation can be initiated either by homogeneous or heterogeneous nucleation. Under ambient atmospheric conditions homogeneous nucleation takes place only in high clouds at temperatures below -38°C . In lower mixed phase clouds, heterogeneous nucleation is dominating. In this process, ice nuclei (IN) are needed which initiate the nucleation of ice at temperatures or vapour pressures closer to the equilibrium conditions than that of homogeneous nucleation. Generally, four different modes of ice nucleation are distinguished in the literature: deposition mode, condensation mode, immersion freezing mode, and contact freezing mode (e.g., Cantrell and Heymsfield, 2005). For a given IN, each mode is characterized by a specific threshold temperature and supersaturation value frequently plotted as temperature/supersaturation curve (e.g., Schaller and Fukuta, 1979; Zimmermann et al., 2007, 2008).

It was found that a number of properties can increase the ability of a special particle to act as IN including the structural match between the substrate and the ice crystal, low water solubility, hydrogen bonds at the IN surface, larger size of the IN, electric field, and the presence of active sites on the surface (e.g., Eidhammer et al., 2009).

However, according to Szyrmer and Zawadzki (1997) the theory of heterogeneous ice nucleation as well as the available measuring techniques still have limitations that prevent an accurate quantitative description (on a molecular scale) of the nucleation process in mixed-phase clouds. In addition, the transfer of results from laboratory investigations to complex ambient atmospheric systems remains difficult.

Chemical composition and mixing-state of ice residuals

M. Ebert et al.

Title Page

Abstract

Introduction

Conclusions

References

Tables

Figures



Back

Close

Full Screen / Esc

Printer-friendly Version

Interactive Discussion

**Chemical
composition and
mixing-state of ice
residuals**

M. Ebert et al.

Title Page

Abstract

Introduction

Conclusions

References

Tables

Figures

⏪

⏩

◀

▶

Back

Close

Full Screen / Esc

Printer-friendly Version

Interactive Discussion



Therefore, identification and detailed characterization of particles that have acted as IN in mixed phase clouds is important for a better understanding of the ice-forming processes. In the last decades, a variety of measurements were performed (mostly not in mixed phase clouds) in order to determine the physico-chemical properties and the most important sources of IN. These measurements are always associated with large uncertainties as the IN concentration are about seven to nine orders of magnitude lower than the total particle concentrations. In addition, ice nucleation may be initiated by surface coatings, heterogeneous inclusions or even a single ice nucleation protein on bacterial cells that are often non-detectable with current instrumentation. Despite of all these problems, previous measurements provided a variety of excellent data which allow to identify important IN sources (see for example the review by Szyrmer and Zawadzki, 1997).

At temperatures below -12°C , natural mineral dust particles, mostly clay minerals as kaolinite, illite or montmorillonite are thought to dominate the atmospheric nucleation of ice (e.g., Mason 1971; Eastwood et al., 2008). At higher temperatures, biological IN may play an important role as the highest temperatures of ice nucleation were reported for specific bacteria (e.g., Schnell and Vali, 1972; Möhler et al., 2007). Further particle groups that are considered as IN include silicates emitted by volcanic eruptions (Isono et al., 1959; Hobbs et al., 1971) and soot (DeMott, 1990; Gorbunov et al., 2001).

A different approach to recognize ambient IN is based on the sampling of ice residuals (IR). For this purpose, small fresh ice particles are collected and it is assumed that the observed IR all acted as IN (i.e., incorporation of additional particles into the ice grain can be neglected). IR sampling was performed in a variety of studies from different aircraft platforms (e.g., Cziczo et al., 2004; Prenni et al., 2007; Targino et al., 2006; Twohy and Poellot, 2005), and at high-altitude mountain top sites using diffusional growth chambers (e.g., DeMott et al., 2003; Richardson et al., 2007). In the present contribution the Ice-CVI (Mertes et al., 2007) is used for the sampling of ice particle residuals within mixed-phase clouds at the high alpine Jungfrauoch research station. The main purpose of our study is the detailed characterization of the chemical

composition and the mixing-state of ice nuclei.

2 Experimental

In February/March 2006 the *C*loud and Aerosol Characterization Experiment (CLACE-5) was conducted at the high alpine research station Jungfraujoch (JFJ, 3580 m a.s.l.; 46.55° N, 7.98° E) in Switzerland. This high-alpine site enables ground-based sampling of mixed phase clouds. IR and the interstitial particle fraction of the total aerosol in mixed-phase clouds were sampled and analyzed by electron microscopy. As ice-nucleation will often not be initiated by the main component of an individual particle, but also by minor or trace components present as small inclusion or coating, the characterization of the mixing state is of utmost importance. To ensure this detailed analysis of the mixing-state, scanning electron microscopy (SEM) was performed operator controlled. This time-consuming approach is the only way to link ice nucleating capabilities of individual ambient particles with their composition and mixing state.

2.1 Sampling

IR and interstitial particle samples from mixed phase clouds were collected with self constructed 2-stage impactors (50% cut off-diameters: 0.1 μm and 0.7 μm) operated behind specific inlet systems. The interstitial aerosol was sampled behind an interstitial inlet operated with a PM₂ cyclone impactor. The Ice-CVI (Mertes et al., 2007) was used to sample residual particles of small ice particles. In the Ice-CVI supercooled droplets (SDR), ice crystals with $d > 20 \mu\text{m}$ and interstitial particles are removed in separate steps. The remaining ice crystals in the size range 5–20 μm are then dried and heated to room temperature in order to remove the ice, and the dry ice residuals are sampled for analysis. The system can also be operated in a “droplet-mode”, where ice residuals and SDR are deposited (for details see Mertes et al., 2007).

Chemical composition and mixing-state of ice residuals

M. Ebert et al.

Title Page

Abstract

Introduction

Conclusions

References

Tables

Figures

⏪

⏩

◀

▶

Back

Close

Full Screen / Esc

Printer-friendly Version

Interactive Discussion



Ni-TEM-grids coated with a formvar foil were used as sample substrates. In order to obtain an optimized loading of the impaction substrates for individual particle analysis, the sampling time was varied depending on the ambient particle concentrations between 1.5 and 2.5 h for the interstitial-samples, and between 35 and 56 h for the IR samples. Sampling of the IR was not performed continuously, as sampling was interrupted during cloud brakes. This may lead to deposition of IR from different air masses on the same substrate. Therefore, a definite assignment of the determined IR to specific air-masses is hindered. Sampling date, sampling duration and temperature are summarized in Table 1.

2.2 Scanning electron microscopy (SEM)

The size, chemical composition, morphology and internal mixing state of more than 3600 particles with particulate diameters (d_p) $\geq 0.7 \mu\text{m}$ from IR and interstitial samples of four cloud events were analyzed by scanning electron microscopy (ESEM, FEI Quanta 200F) and energy-dispersive X-ray microanalysis (EDX, EDAX, Tilburg, The Netherlands). Due to rupture of the formvar foil during sampling, IR and interstitial samples of smaller particles with diameters between 60 nm and 700 nm were only received for cloud event 1.

The particles were classified in eight particle groups: silicates, C-O-S particles (complex mixture of organics, nitrates, sulphates, and soot), sulphates, sea-salt, Pb-bearing particles, Ca-rich particles, Al-rich particles and complex mixtures (of the previous groups). All particles, which can not be assigned to one of these eight groups were classified as other particles. The classification criteria for the different groups and their most probable source are given in Table 2. Following the classification criteria, aged sea-salt (without detectable chlorine content) will be classified as sulphates, and all carbonaceous particles (biological, soot and organics) as C-O-S particles. A more detailed discussion of the characteristics of the particle groups C-O-S, complex mixtures and Pb-bearing particles is given in the results and discussion chapter.

Chemical composition and mixing-state of ice residuals

M. Ebert et al.

Title Page

Abstract

Introduction

Conclusions

References

Tables

Figures

⏪

⏩

◀

▶

Back

Close

Full Screen / Esc

Printer-friendly Version

Interactive Discussion



2.3 Transmission Electron Microscopy (TEM)

Mineralogical phase composition of selected particles was determined by transmission electron microscopy using a Philips CM20 instrument equipped with an energy-dispersive X-ray detector. The internal mixing state of Pb-bearing particles was studied in detail by high resolution transmission electron microscopy (HR-TEM) in a Jeol 3010 instrument.

In general, the phase composition is determined by selected area electron diffraction (SAED). However, for particles with such low diameters as encountered in the present study (below 10 nm) this technique can not be applied. Alternatively, direct imaging of properly oriented particles provides an access to interplanar spacings and angles. The Fast Fourier Transformation (FFT) of high resolution TEM images yields diffraction patterns which can be indexed for phase determination. For this purpose, the software PIEP (Miehe, 1997) and the ICSD online database were applied.

3 Results and discussion

3.1 Identification of IN

The relative number abundance of the different particle groups within IR samples and interstitial samples for coarse particles ($d_p \geq 0.7 \mu\text{m}$) are given in Table 3 separately for the different cloud events. For fine particles ($0.1 \leq d_p \leq 0.7 \mu\text{m}$), the relative number abundance of the different particles groups is listed in Table 4. Due to the low IN concentration, the sampling times for IR samples were rather long (about 2 days, Table 1) in order to obtain a sufficient loading of the sampling substrates. In contrast, for interstitial samples a sampling duration of approximately 2 h was applied. Consequently, often several interstitial samples but only one IR sample were received for the same cloud event. Scanning electron microscopy and energy-dispersive X-ray microanalysis revealed that different interstitial samples from the same cloud event have almost

Chemical composition and mixing-state of ice residuals

M. Ebert et al.

Title Page

Abstract

Introduction

Conclusions

References

Tables

Figures

⏪

⏩

◀

▶

Back

Close

Full Screen / Esc

Printer-friendly Version

Interactive Discussion



identical composition. Therefore, the particle group number abundances of the IR samples are compared with an average particle group number abundance of the different interstitial samples in Tables 3 and 4.

Not all particles found in the IR samples are necessarily IN, because it cannot be expected that separation within the Ice-CVI has an 100% efficiency. All instrumental tests showed that the different hardware parts of the sampler, responsible for the separation of larger ice crystals, SDR and the interstitial aerosol are working with high efficiency (Mertes et al., 2007). In addition, small ice crystals that originate from rime splintering, fragmentation during collisions of ice crystals and shattering of droplets during freezing may also be present in the IR samples. However, these ice crystals are expected to be predominantly smaller than ~ 100 nm (Mertes et al., 2007; Kamphus et al., 2009), and are, thus, not collected in the present study. Nevertheless, it has to be considered that within a mixed-phase cloud the IN fraction is very small ($\leq 10^{-5}$ during CLACE5; Mertes et al., 2007) increasing the risk of sampling artefacts. Therefore, only particle groups, which are significantly enriched (at least by a factor of two) in the IR samples compared to the interstitial samples are interpreted as IN (a similar definition of IN was used previously by Hoose, 2009).

For particles with diameters above 700 nm (Table 3), the dominant particle groups in the interstitial samples are C-O-S particles (complex secondary aerosol particles consisting of a mixture of sulfates, nitrates, organics and primary soot inclusions), pure sulphates, sea-salt and silicates. For smaller particles (60–700 nm) of the interstitial samples, the two secondary aerosol particle groups C-O-S and pure sulfates are dominating alone ($>90\%$). In general, this composition is typical for a rural or urban background aerosol in Central Europe (e.g., Ebert et al., 2002a, 2004; Vester et al., 2007).

The variable sea-salt abundance for the different cloud events can be directly related to the air mass history. The high amounts of sea salt and aged sea salt (classified in the sulphate group) during cloud event 1 and 3 are due to the direct transport of the air masses from the Atlantic in contrast to cloud events 2 and 4 with air

Chemical composition and mixing-state of ice residuals

M. Ebert et al.

Title Page

Abstract

Introduction

Conclusions

References

Tables

Figures



Back

Close

Full Screen / Esc

Printer-friendly Version

Interactive Discussion



masses from Central/Eastern Europe (backtrajectories were calculated using the Hysplit model) (Draxler and Rolph, 2003).

The IR samples are characterized by high abundances of C-O-S particles, Pb-bearing particles, silicates, pure sulfates and complex mixtures (Tables 3 and 4). In order to show enrichments within the IR samples relative to interstitial samples, average particle group abundances are displayed in Fig. 1 for $d_p \geq 0.7 \mu\text{m}$. Results from cloud event 4 were not considered here, as the Ice-CVI was operated in the “droplet”-mode during this event. Due to the fact, that the SDR are not removed in the “droplet”-mode, the relative abundance of sulphate and secondary particles increases here in comparison to the pure IR samples (cloud event 1–3).

Pronounced enrichments within the IR fraction ($d_p \geq 0.7 \mu\text{m}$) were observed for the three groups of C-O-S particles (from 11 to 22%), complex mixtures (from 2 to 14%) and above all Pb bearing particles (from 0.7 to 18%). The characteristics of these groups are discussed in detail in Sect. 3.2. In cloud event 1, the small IR ($0.1 \leq d_p \leq 0.7 \mu\text{m}$) have a similar composition as the coarse IR. The only difference was a higher abundance of aluminium rich particles (aluminium oxides, mostly mixed with Ca and S) and a lower abundance of the complex mixtures in the small IR fraction. Enrichment of metallic particles (e.g. Al, Ti) in the IR fraction was also observed during CLACE6 by Kamphus et al. (2009). Aluminium rich particles (interpreted as propellant combustion residuals from rockets) were found to be efficient IN (Parungo and Allee, 1978). It is interesting to note that in this paper aluminium oxide particles mixed with Ca and S were identified to be the most efficient IN (not the more abundant pure Al_2O_3 particles). This observation is in agreement with the observed enrichment of Al-rich particles with complex mixing-state found in the fine IR fraction of our study.

All other particle groups are depleted or show only minor enrichments in the IR samples (Fig. 1). The most pronounced depletion in the coarse ($\geq 0.7 \mu\text{m}$) IR is observed for external silicates (from 26 to 16%), and for the soluble particle groups sulphate (from 36 to 15%) and sea-salt (from 19 to 8%). This is not surprising for the two latter groups, as sulfates and sea salt particles are generally regarded as inefficient IN

**Chemical
composition and
mixing-state of ice
residuals**

M. Ebert et al.

Title Page

Abstract

Introduction

Conclusions

References

Tables

Figures

⏪

⏩

◀

▶

Back

Close

Full Screen / Esc

Printer-friendly Version

Interactive Discussion

(Wallace and Hobbs, 2006). The depletion of external silicates in the IR samples is somewhat surprising as many silicate minerals (especially clay minerals) are known to be efficient IN (e.g., Roberts and Hallet, 1968; Zuberi et al., 2002). However, the ice nucleation efficiency of silicate minerals is highly variable (e.g., Zimmermann et al., 2008). As the phase composition of the particles was not determined, we cannot rule out the possibility that the most efficient silicate IN (clay minerals) were only present at low concentrations among external silicates. Beside external grains, silicates are an important constituent of complex mixtures and Pb bearing particles (see below) which are both strongly enriched in the IR fraction. Thus it is found that silicates are an important IN component at the Jungfraujoch station which is in agreement with the observations of Kamphus et al. (2009).

3.2 Characteristics of IN

3.2.1 C-O-S group (complex mixtures of soot with organics, sulfates, and nitrates)

The C-O-S group is an internal mixture dominated by secondary components: organics, sulfates, and nitrates and primary soot inclusions. These components, either as internal or external mixture, mostly dominates the fine-mode of urban or urban influenced aerosol samples (e.g., Murphy et al., 2006; Vester et al., 2007). This is also true for the fine mode of the interstitial samples during CLACE5 (Table 4).

Freshly emitted unaltered soot particles can be clearly identified by SEM analysis on base of their highly characteristic morphology. Even small soot agglomerates (<100 nm) on the surface of other particles can be identified unambiguously. The soot agglomerates detected in this study exhibit a complex mixing state and are highly compacted (Fig. 2) indicating advanced atmospheric aging (Weingartner et al., 1997). In addition to the agglomerate morphology, the soot classification was verified by high resolution transmission electron microscopy which showed nano-crystalline graphitic layers (Wentzel et al., 2003).

Chemical composition and mixing-state of ice residuals

M. Ebert et al.

Title Page

Abstract

Introduction

Conclusions

References

Tables

Figures



Back

Close

Full Screen / Esc

Printer-friendly Version

Interactive Discussion



**Chemical
composition and
mixing-state of ice
residuals**

M. Ebert et al.

Title Page

Abstract

Introduction

Conclusions

References

Tables

Figures



Back

Close

Full Screen / Esc

Printer-friendly Version

Interactive Discussion



The high abundance of soot in the IR fraction is in agreement with the findings of Cozic et al. (2008), who performed black carbon (BC) bulk measurements of IR samples and the total aerosol during CLACE5. They found an enrichment of the relative BC abundance from 9% for the total aerosol to 27% in the IN samples (mass concentration). A similar enrichment of BC (4 to 18 mass %) was found during CLACE3 (February–March 2004) by Mertes et al. (2007). In contrast, Kamphus et al. (2009) found similar contents of carbon-containing particles (sulfates with strong carbon/organic signal) within the IR and the background aerosol (~25% by number) during CLACE6 (February–March 2007).

Based on the morphological information, none of the carbonaceous particulate components could be assigned as biological (a total of 879 C-O-S particles from the whole size range was analyzed in detail by individual particle analysis). Externally mixed biological material as plant debris, pollen or spores can be easily identified by SEM on base of their morphology and characteristic minor elements (Ebert et al., 2000). However, in such complex internal mixtures as encountered during CLACE 5 detection of biological components is hindered. Therefore, we cannot exclude the presence of thin bacteria films or bacteria agglomerates. There are several bacteria strains identified, which can act as IN (Maki et al., 1974). As many soil particles presumably carry small amounts of bacteria, the importance of this species for ice nucleation is discussed for a long time (e.g., Schnell and Vali, 1972). Since living cells contain liquid water and the freezing of this cell solution is usually lethal for the organism (Mazur, 1984), most other biological material have no special IN-capabilities. Some freeze-tolerant organisms (herbaceous plants, intertidal molluscs) have effective IN outside the cells, ensuring extra-cellular freezing close to 0 °C (Szymer and Zawadzki, 1997).

3.2.2 Complex mixtures (mainly silicate and metal oxide mixtures)

The majority of all particles identified as IN within mixed phase clouds at the Jungfraujoch station exhibit a complex internal mixing state. Mixtures with a dominant major element (e.g. Al, C) or a highly characteristic minor element (Pb) were classified in

separated groups. All other internal mixtures are summarized in the group of complex mixtures.

The complex internal mixing state of the particles within the IN fraction can be explained by the reactive environment of a mixed phase cloud. Besides particle formation, condensation and coagulation processes, which can also be observed outside clouds, a variety of additional particle modifications under participation of the water and/or ice phase can alter the morphology, chemical composition and mixing-state. In literature, residues of evaporated droplets and sublimated ice particles are described to be very effective IN (Beard, 1992; Rosinski, 1995). The reason for the enhanced IN efficiency of such complex internal mixtures remains unclear.

In the present study 428 complex mixtures in the different IR samples were found. Silicates (mostly mixed with carbonaceous material) are the most abundant major component within these mixtures (50% of the mixtures contain silicates as major component). Beside silicates, metal oxides (predominantly Fe-oxides, but also smaller amounts of Al- and Ti-oxides) were found to be the main component in around 25% of the complex mixtures. The remaining 25% are internal mixtures of 2 or more components, listed in Table 3.

The silicate/carbonaceous mixtures were also found in previous CLACE experiments. During CLACE 3 and CLACE 4, where Pb-bearing particles were only observed in much lower quantity, these mixtures of silicates and carbonaceous material showed the highest enrichment in the IR fraction of all particle groups (Ebert et al., 2006). The organic composition of the carbonaceous material is not known. However, in different heating and deliquescence experiments with particles from CLACE 3 and 4 in the environmental scanning electron microscope (Ebert et al., 2002b) it was shown that the carbonaceous material in these mixtures is non-hygroscopic and low-volatile, pointing to a black carbon or resin like material (Ebert et al., 2006). Silicate/carbonaceous mixtures were also detected during CLACE 1 by a transportable laser mass spectrometer (LAMPAS2) and could be correlated with high absorption pointing to a black carbon (Hinz et al., 2005).

Chemical composition and mixing-state of ice residuals

M. Ebert et al.

Title Page

Abstract

Introduction

Conclusions

References

Tables

Figures



Back

Close

Full Screen / Esc

Printer-friendly Version

Interactive Discussion



3.2.3 Pb bearing particles

With an average particle group number abundance of 18% in the IN-fraction, the Pb bearing particles are enriched by a factor of 25 (!) relative to the interstitial fraction (0.7%). In contrast to the other particle groups, the definition of the “Pb bearing” group also includes particle with minor amounts of this element. All particles with detectable Pb concentrations in an EDX spot-measurement at any place of an individual particle were classified as “Pb bearing”. Electron micrographs of such Pb-bearing particles are shown in Fig. 3. During the same experiment, a high abundance of Pb bearing particles in the IR fraction (32% in terms of number) was also observed by single particle mass spectrometry (Cziczo et al., 2009). The higher value obtained from mass spectrometry compared to energy-dispersive X-ray microanalysis can be easily explained by the lower detection limit.

In the four cloud events investigated, between 0 and 22% of all Pb bearing particles were external Pb rich particles (Fig. 3a). External particles were identified by energy-dispersive X-ray microanalysis as lead oxides or lead chlorides. The majority of all particles classified as “Pb-bearing” contains only small Pb inclusions, respectively small Pb grains at the surface (Fig. 3). The fact that most Pb bearing particles contain this element only in minor or trace concentrations was also observed for total aerosol samples at a variety of locations by Murphy et al. (2007).

From two-dimensional TEM-bright field images the volume fraction of the lead-rich inclusions was calculated assuming spheres with equivalent projected areas. The volume fraction of the lead-rich inclusions is mostly in the range of 0.5–8%. The Pb-components are found either embedded in or agglomerated with almost all particle groups observed in this study (Table 5). Most abundant “matrix” particles were silicates and sea salt/sulphate-mixtures (Fig. 3b,c). ESEM observations show that there is often more than one Pb-rich inclusion within or more than one coagulate on the surface of an individual particle (Fig. 3c). The detailed internal structure and the mineralogical phase of the Pb-inclusions was determined by HR-TEM. High resolution TEM images showed

Chemical composition and mixing-state of ice residuals

M. Ebert et al.

Title Page

Abstract

Introduction

Conclusions

References

Tables

Figures



Back

Close

Full Screen / Esc

Printer-friendly Version

Interactive Discussion



that most of the some hundred nm large Pb-rich inclusions are composed of a large number of much smaller primary Pb-rich particles (Fig. 4a). The size-distribution of the primary Pb-rich particles is very narrow with a maximum at a geometric diameter between 3 and 8 nm.

5 From the HR-TEM bright field images of the Pb-rich inclusions pseudo-diffraction pattern were calculated by fast Fourier transformation to determine the phase composition. The majority of all analyzed primary Pb-rich particles could be identified as PbS (Fig. 4b), some primary particles are elemental Pb. The small primary Pb-rich particles are coagulated onto pre-existing particles of all observed particle groups in the IR fraction. Coagulation of small Pb-rich particles onto the surface of other particles in the urban environment was observed in previous studies (Utsunomiya et al., 2004; Choel et al., 2006). Condensation of gaseous Pb compounds is less probable as they are only present in very low concentrations (Shotyk and Le Roux, 2005). After banning of tetra-ethyl lead from automotive petrol in 1980, the lead concentration within atmospheric aerosols has dropped drastically (e.g., Ebert et al., 2000; EPA, 2002). Today, the dominant sources for Pb-rich particles are light aviation fuel (which still contains tetra-ethyl lead), emissions from coal combustion and lead smelters (Murphy et al., 2007). In contrast to previous CLACE campaigns, lot of helicopter traffic occurred in the direct vicinity of the Jungfrauoch station during CLACE 5. Indeed, Pb-rich particle were found at a much higher abundance during CLACE 5. Alternatively, lead smelters could also be the source of the lead compounds observed in our field campaign. The same Pb species as observed at the Jungfrauoch station (PbCl₂, Pb, PbS and PbO) were found in the vicinity of a lead smelter (Batonneau et al., 2004).

15 In our experiment, PbO, PbCl₂, Pb and PbS were the only Pb species observed. However, PbI₂ is the only atmospheric relevant lead compound for which high IN efficiency was demonstrated up to now (Mason and Hallet, 1957). The role of lead iodine from automobile exhausts for ice nucleation is discussed controversially. According to Schäfer (1966), an increased number of IN downwind of automobile roads can be attributed to lead iodine (e.g., Schäfer, 1966). In contrast, Grant and Corrin (1973)

Chemical composition and mixing-state of ice residuals

M. Ebert et al.

[Title Page](#)[Abstract](#)[Introduction](#)[Conclusions](#)[References](#)[Tables](#)[Figures](#)[⏪](#)[⏩](#)[◀](#)[▶](#)[Back](#)[Close](#)[Full Screen / Esc](#)[Printer-friendly Version](#)[Interactive Discussion](#)

pointed out that the formation of lead iodine in automobile exhaust is thermodynamically unfavourable. This view was opposed by Langer (1970) and Reischel and Vali (1975) who suggested an important role of PbO in cooperation with nitrogen oxides or ammonium iodine leading to formation of PbI_2 . As we have not determined PbI_2 in any of the Pb-bearing particles, even by HR-TEM investigations on a nm-scale, it is concluded that the detected Pb species (PbO , Pb , PbS or $PbCl_2$) increase the IN capabilities of a mixed particle. As these Pb species have no increased IN efficiency as external mixture, this effect must be attributed to the mixing state. Our conclusion is confirmed by recent laboratory experiments (Cziczko et al., 2009). In these experiments, kaolinite particles doped with 1% $PbSO_4$ showed an increased IN capability in contrast to the externally mixed kaolinite particles, although the pure $PbSO_4$ particles were inefficient IN.

4 Conclusions

1. The combination of Ice-CVI sampling and electron microscopy (SEM and TEM) of the ice residuals enables the identification and detailed physico-chemical characterization (size, morphology, shape, chemical composition, mineralogy and mixing state) of IN within mixed phase clouds. Reliable IN identification can be reached by determination of the enrichment of a given particle group in IR samples relative to the interstitial aerosol.
2. During CLACE 5, particle groups significantly enriched in IR samples include Pb-bearing particles, C-O-S particles and complex mixtures. Other particle groups found in the IR samples (silicates, sulfates, sea salt, Ca-rich particles) cannot be assigned unambiguously as IN. All particle groups interpreted as IN show a complex mixing state.
3. Most IN identified at the Jungfraujoch station are internal mixtures containing anthropogenic components (either as main or minor constituent). For example,

Chemical composition and mixing-state of ice residuals

M. Ebert et al.

Title Page

Abstract

Introduction

Conclusions

References

Tables

Figures



Back

Close

Full Screen / Esc

Printer-friendly Version

Interactive Discussion



**Chemical
composition and
mixing-state of ice
residuals**

M. Ebert et al.

Title Page

Abstract

Introduction

Conclusions

References

Tables

Figures

⏪

⏩

◀

▶

Back

Close

Full Screen / Esc

Printer-friendly Version

Interactive Discussion

silicates/soot and silicate/sulfates mixtures are more enriched in the IR fraction as pure silicates. Therefore, it appears that admixture of anthropogenic components increases the IN efficiency within mixed phase clouds at the Jungfraujoch station. The mixing state seems to be a key parameter for the ice nucleation behaviour that cannot be predicted from the separate components. Consequently, future laboratory experiments should expand their scope from pure external mixtures or pure components with coatings to the more complex internal mixing observed in natural aerosols.

Acknowledgements. Financial support by the German Science Foundation (Sonderforschungsbereich 641 “The tropospheric ice phase”), the European Community Research Infrastructure Action (FP6 Structuring the European Research Area Programme, EUSAAR Contract N° RII3-CT-2006-026140) and MeteoSwiss (in the framework of the Global Atmosphere Watch program) is gratefully acknowledged. We also thank the International Foundation High Altitude Research Stations Jungfraujoch and Gornergrat (HFSJG) for the opportunity to perform experiments on the Jungfraujoch.

References

- Batonneau, Y., Bremard, C., Gengembre, L., Laureyns, J., Le Maguer, A., Le Maguer, D., Perdrix, E., and Sobanska, S.: Speciation of PM₁₀ sources of airborne nonferrous metals within the 3-km zone of lead/zinc smelters, *Environ. Sci. Technol.*, 38, 5281–5289, 2004.
- Beard, K. V.: Ice initiation in warm-base convective clouds: an assessment of microphysical mechanisms, *Atmos. Res.*, 28, 125–152, 1992.
- Cantrell, W. and Heymsfield, A.: Production of ice in tropospheric clouds, *Bull. Am. Meteorol. Soc.*, 86, 795–807, 2005.
- Choel, M., Deboudt, K., Flament, P., Lecornet, G., Perdrix, E., and Sobanska, S.: Fast evolution of tropospheric Pb- and Zn-rich particles in the vicinity of a lead smelter, *Atmos. Environ.*, 40, 4439–4449, 2006.
- Cozic, J., Mertes, S., Verheggen, B., Cziczo, D. J., Gallavardin, S. J., Walter, S., Baltensperger, U., and Weingartner, E.: Black carbon enrichment in atmospheric ice particle

Chemical composition and mixing-state of ice residuals

M. Ebert et al.

Title Page

Abstract

Introduction

Conclusions

References

Tables

Figures

⏪

⏩

◀

▶

Back

Close

Full Screen / Esc

Printer-friendly Version

Interactive Discussion

- residuals observed in lower tropospheric mixed phase clouds, *J. Geophys. Res.*, 113, D15209, doi:10.1029/2007JD009266, 2008.
- Cziczo, D. J., Murphy, D. M., Hudson, P. K., and Thomson, D. S.: Single particle measurements of the chemical composition of cirrus ice residue during crystal-face, *J. Geophys. Res.*, 109, D04201, doi:10.1029/2003JD004032, 2004.
- Cziczo, D. J., Stetzer, O., Worringer, A., Ebert, M., Weinbruch, S., Kamphus, M., Gallavardin, S. J., Curtius, J., Bormann, S., Froyd, K. D., Mertes, S., Möhler, O., and Lohmann, U.: Inadvertent climate modification due to anthropogenic lead, *Nat. Geosci.*, 2, 333–336, 2009.
- DeMott, P. J.: An exploratory study of ice nucleation by soot aerosols, *J. Appl. Meteor.*, 29, 1072–1079, 1990.
- DeMott, P. J., Cziczo, D. J., Prenni, A. J., Murphy, D. M., Kreidenweis, S. M., Thomson, D. S., Borys, R., and Rogers, D. C.: Measurements of the concentration and composition of nuclei for cirrus formation, *Proc. Natl. Acad. Sci. USA*, 100, 14655–14660, 2003.
- Draxler, R. and Rolph, G. D.: HYSPLIT (HYbrid Single-Particle Lagrangian Integrated Trajectory) Model, access via NOAA ARL READY, NOAA Air Resources Laboratory, Silver Spring, MD, available at: <http://www.arl.noaa.gov/ready/hysplit4.html>, 2003.
- Eastwood, M. L., Cremel, S., Gehrke, C., Girard, E., and Bertram, A. K.: Ice nucleation on mineral dust particles: onset conditions, nucleation rates and contact angles, *J. Geophys. Res.*, 113, D22203, doi:10.1029/2008JD010639, 2008.
- Ebert, M., Weinbruch, S., Hoffmann, P., and Ortner, H. M.: Chemical characterization of North Sea aerosol particles by total reflection X-Ray fluorescence analysis and high-resolution scanning electron microscopy, *J. Aerosol Sci.*, 31, 613–632, 2000.
- Ebert, M., Weinbruch, S., Rausch, A., Gorzawski, G., Hoffmann, P., Wex, H., and Helas, G.: The complex refractive index of aerosols during LACE 98 as derived from the analysis of individual particles, *J. Geophys. Res.*, 107(D21), 8121, doi:10.1029/2000JD000195, 2002a.
- Ebert, M., Inerle-Hof, M., and Weinbruch, S.: Environmental scanning electron microscopy as a new technique to determine the hygroscopic behaviour of individual aerosol particles, *Atmos. Environ.*, 36, 5909–5916, 2002b.
- Ebert, M., Weinbruch, S., Hoffmann, P., and Ortner, H. M.: The chemical characterization and complex refractive index of rural and urban influenced aerosols determined by individual particle analysis, *Atmos. Environ.*, 38, 6531–6545, 2004.
- Ebert, M., Worringer, A., Inerle-Hof, M., Benker, N., and Weinbruch, S.: Identification of the ice

Chemical composition and mixing-state of ice residuals

M. Ebert et al.

Title Page

Abstract

Introduction

Conclusions

References

Tables

Figures

⏪

⏩

◀

▶

Back

Close

Full Screen / Esc

Printer-friendly Version

Interactive Discussion



forming fraction of the atmospheric aerosol in mixed-phase clouds by environmental scanning electron microscopy, Activity Report 2005/2006, International Foundation High Altitude Research Stations JG, Bern, Switzerland, 105–112, 2006.

Eidhammer, T., DeMott, P. J., and Kreidenweis, S. M.: A comparison of heterogeneous ice nucleation parameterizations using a parcel model framework, *J. Geophys. Res.*, 114, D06202, doi:10.1029/2008JD011095, 2009.

Environmental Protection Agency: Latest findings on National Air Quality, 2002 Status and Trends (US Environmental Protection Agency), available at: http://www.epa.gov/air/airtrends/aqtrnd02/2002_airtrends_final.pdf, 2003.

Gorbunov, B., Baklanov, A., Kakutkina, N., Windsor, H. L., and Toumi, R.: Ice nucleation on soot particles, *Aerosol Sci.*, 32, 199–215, 2001.

Grant, L. O. and Corrin, M. L.: Raw and iodine-treated automobile exhaust as a source of ice nuclei, *J. Weather Modification*, 5, 238–248, 2001.

Hinz, K.-P., Trimborn, A., Weingartner, E., Henning, S., Baltensberger, U., and Spengler, B.: Aerosol single particle composition at the Jungfraujoch, *Aerosol Sci.*, 36, 123–145, 2005.

Hobbs, P. V., Fullerton, M., and Bluhm, G.: Ice nucleus “storms” in Hawaii, *Nat. Phys. Sci.*, 230, 90–91, 1971.

Hoose, C.: Biological Ice formation, *Nat. Geosci.*, 2, 385–386, 2009.

Isono, K., Komabayasi, M., and Ono, A.: Volcanoes as a sources of atmospheric ice nuclei, *Nature*, 183, 317–319, 1959.

Kamphus, M., Ettner-Mahl, M., Klimach, T., Drewnick, F., Keller, L., Cziczo, D. J., Mertes, S., Borrmann, S., and Curtius, J.: Chemical composition of ambient aerosol, ice residues and cloud droplet residues in mixed-phase clouds: single particle analysis during the Cloud and Aerosol Characterization Experiment (CLACE 6), *Atmos. Chem. Phys.*, 10, 8077–8095, doi:10.5194/acp-10-8077-2010, 2010.

Langer, G.: A study of automobile exhaust as a source of ice nuclei, Preprints of the second National Conference on Weather Modification, American Meteorological Society, Boston, Massachusetts, 242–243, 1970.

Lohmann, U. and Diehl, K.: Sensitivity studies of the importance of dust ice nuclei for the indirect aerosol effect on stratiform mixed phase clouds, *J. Atmos. Sci.*, 63(3), 968–982, 2006.

Maki, L. R., Galyan, E. L., Chang-Chien, M., and Caldwell, D.: Ice nucleation induced by *Pseudomonas syringae*, *Appl. Microbiol.*, 28, 456–459, 1974.

**Chemical
composition and
mixing-state of ice
residuals**

M. Ebert et al.

Title Page

Abstract

Introduction

Conclusions

References

Tables

Figures

◀

▶

◀

▶

Back

Close

Full Screen / Esc

Printer-friendly Version

Interactive Discussion



- Mason, B. J. and Hallet, J.: Ice-forming nuclei, *Nature*, 179, 357–359, 1957.
- Mason, B. J.: *The Physics of Clouds*, Clarendon Press, Oxford, 660 pp., 1971.
- Mazur, P.: Freezing of living cells: mechanisms and implications, *Am. J. Physiol.-Cell Ph.*, 16, C125–C142, 1984.
- 5 Mertes, S., Verheggen, B., Walter, S., Ebert, M., Conolly, P., Weingartner, E., Schneider, J., Bower, K., Weinbruch, S., Cozic, J., and Heintzenberg, J.: Counterflow virtual impactor based collection of small ice particles in mixed-phase clouds for the physico-chemical characterisation of tropospheric ice nuclei: sampler description and first case study, *Aerosol Sci. Technol.* 41, 848–864, 2007.
- 10 Miehe, G.: Algorithmen mit geringem Informationsbedarf zur Phasenanalyse und Gitterkonstantenbestimmung aus Elektronenbeugungsdaten, *Ber. Dtsch. Mineral. Ges. Beih. Z. Eur. J. Mineral.* 9, 250, 1997.
- Möhler, O., DeMott, P. J., Vali, G., and Levin, Z.: Microbiology and atmospheric processes: the role of biological particles in cloud physics, *Biogeosciences*, 4, 1059–1071, doi:10.5194/bg-4-1059-2007, 2007.
- 15 Murphy, D. M., Cziczo, D. J., Froyd, K. D., Hudson, P. K., Matthew, B. M., Middlebrook, A. M., Peltier, R. E., Sullivan, A., Thomson, D. S., and Weber, R. J.: Single-particle mass spectrometry of tropospheric aerosol particles, *J. Geophys. Res.*, 111, D23S32, doi:10.1029/2006JD007340, 2006.
- 20 Murphy, D. M., Hudson, P. K., Cziczo, D. J., Gallavardin, S., Froyd, K. D., Johnston, M. V., Middlebrook, A. M., Reinard, M. S., Thomson, D. S., Thornberry, T., and Wexler, A. S.: Distribution of lead in single atmospheric particles, *Atmos. Chem. Phys.*, 7, 3195–3210, doi:10.5194/acp-7-3195-2007, 2007.
- Parungo, F. P. and Allee, P. A.: Rocket effluent: Its nucleation activity and related properties, *J. Appl. Meteor.*, 17, 1856–1863, 1978.
- 25 Penner, J. E., Andreae, M. O., Annegarn, H., Barrie, L., Feichter, J., Hegg, D., Jayaraman, A., Leaitch, R., Murphy, D., and Nganga, J.: Aerosols, their direct and indirect effects, in: *Climate Change 2001: The Scientific Basis – Contributions of Working Group I to the Third Assessment Report of the Intergovernmental Panel on Climate Change*, edited by: Houghton, J. T., Ding, Y., Griggs, D. J., et al., 291–336, Cambridge Univ. Press, New York, USA, 2001.
- 30 Prenni, A. J., DeMott, P. J., Twohy, C., Poellot, M. R., Kreidenweis, S. M., Rogers, D. C., Brooks, S. D., Richardson, M. S., and Heymsfield, A. J.: Examinations of ice formation processes in Florida cumuli using ice nuclei measurements of anvil ice crystal particle residues,

- J. Geophys. Res., 112, D10221, doi:10.1029/2006JD007549, 2007.
- Reischel, M. T. and Vali, G.: Freezing nucleation in aqueous electrolytes, *Tellus*, 27, 414–427, 1975.
- Richardson, M. S., DeMott, P. J., Kreidenweis, S. M., Cziczo, D. J., Dunlea, E. J., Jimenez, J. L., Thomson, D. S., Ashbaugh, L. L., Borys, R. D., Westphal, D. L., Casuccio, G. S., and Lersch, T. L.: Measurements of heterogeneous ice nuclei in the Western United States in springtime and their relation to aerosol characteristics, *J. Geophys. Res.*, 112, D02209, doi:10.1029/2006JD007500, 2007.
- Roberts, P. and Hallett, J.: A laboratory study of the ice nucleating properties of some mineral particulates, *Q. J. Roy. Meteor. Soc.*, 94, 25–34, 1968.
- Rosinski, J.: Cloud condensation nuclei as a real source of ice forming nuclei in continental and marine air masses, *Atmos. Res.*, 38, 351–359, 1995.
- Schäfer, V. J.: Ice nuclei from automobile exhaust and iodine vapour, *Science*, 154, 1555–1557, 1966.
- Schaller, R. C. and Fukuta, N.: Ice nucleation by aerosol particles: experimental studies using a wedge-shaped ice thermal diffusion chamber, *J. Atmos. Sci.*, 36, 1788–1802, 1979.
- Schnell, R. C. and Vali, G.: Atmospheric ice nuclei from decomposing vegetation, *Nature*, 236, 163–165, 1972.
- Shotyk, W. and Le Roux, G.: Biogeochemistry and cycling of lead, in: *Biogeochemical Cycles of the Elements. Metal Ions in Biological Systems*, edited by: Sigel, A., Sigel, H., Sigel, R. K. O., vol. 43., M. Dekker, New York, USA, 240–275. 2005.
- Szymer, W. and Zawadzki, I.: Biogenic and anthropogenic sources of ice-forming nuclei: a review, *Bull. Americ. Met. Soc.*, 78(2), 209–228, 1997.
- Targino, A. C., Krejci, R., Noone, K. J., and Glantz, P.: Single particle analysis of ice crystal residuals observed in orographic wave clouds over Scandinavia during INTACC experiment, *Atmos. Chem. Phys.*, 6, 1977–1990, doi:10.5194/acp-6-1977-2006, 2006.
- Twohy, C. H. and Poellot, M. R.: Chemical characteristics of ice residual nuclei in anvil cirrus clouds: evidence for homogeneous and heterogeneous ice formation, *Atmos. Chem. Phys.*, 5, 2289–2297, doi:10.5194/acp-5-2289-2005, 2005.
- Utsunomiya, S., Jensen, K. A., Keeler, G. J., and Ewing, R. C.: Direct identification of trace metals in fine and ultrafine particles in the Detroit urban atmosphere, *Environ. Sci. Technol.*, 38, 2289–2297, 2004.
- Vester, B. P., Ebert, M., Barnert, E. B., Schneider, J., Kandler, K., Schütz, L., and Weinbruch, S.:

**Chemical
composition and
mixing-state of ice
residuals**

M. Ebert et al.

Title Page

Abstract

Introduction

Conclusions

References

Tables

Figures

◀

▶

◀

▶

Back

Close

Full Screen / Esc

Printer-friendly Version

Interactive Discussion



Chemical composition and mixing-state of ice residuals

M. Ebert et al.

Title Page

Abstract

Introduction

Conclusions

References

Tables

Figures

⏪

⏩

◀

▶

Back

Close

Full Screen / Esc

Printer-friendly Version

Interactive Discussion



Composition and mixing state of the urban background aerosol in the Rhein-Main area (Germany), *Atmos. Environ.*, 41(29), 6102–6115, 2007.

Wallace J. M. and Hobbs, P. V.: *Atmospheric science: an Introductory Survey*, 2nd edn., International Geophysics Series, Academic Press, Elsevier Inc., Amsterdam, 483 pp., 2006.

5 Weingartner, E., Burtscher, H., and Baltensperger, U.: Hygroscopic properties of carbon and diesel soot particles, *Atmos. Environ.*, 31, 2311–2327, 1997.

Wentzel, M., Gorzawski, H., Naumann, K.-H., Saathoff, H., and Weinbruch, S.: Transmission electron microscopical and aerosol dynamical characterization of soot aerosols, *J. Aerosol Sci.*, 34, 1347–1370, 2003.

10 Zimmermann, F., Ebert, M., Worringer, A., Schütz, L., and Weinbruch, S.: Environmental scanning electron microscopy (ESEM) as a new technique to determine the ice nucleation capability of individual aerosol particles, *Atmos. Environ.*, 41, 8219–8227, 2007.

Zimmermann, F., Ebert, M., Hoffmann, H., Kandler, K., Schütz, L., Worringer, A., and Weinbruch, S.: Ice nucleation properties of the most abundant mineral dust phases, *J. Geophys. Res.*, 113, D23204, doi:10.1029/2008JD010655, 2008.

15 Zuberi, B., Bertram, A. K., Cassa, C. A., Molina, L. T., and Molina, M. J.: Heterogeneous nucleation of ice in $(\text{NH}_4)_2\text{SO}_4\text{-H}_2\text{O}$ particles with mineral dust immersions, *Geophys. Res. Lett.*, 29, doi:10.1029/2001GL014289, 2002.

Chemical composition and mixing-state of ice residuals

M. Ebert et al.

Title Page

Abstract

Introduction

Conclusions

References

Tables

Figures

⏪

⏩

◀

▶

Back

Close

Full Screen / Esc

Printer-friendly Version

Interactive Discussion



Table 1. Sampling parameters for ice residuals (IR) and interstitial samples (Int), collected during CLACE 5 within mixed phase clouds.

| cloud event | particle fraction | cut off diameter (μm) | sampling day | sampling time (min) | temperature (K) |
|-------------|-------------------|------------------------------------|---------------|---------------------|-----------------|
| 1 | IR | ≥ 0.7 | 10–12 Mar | 2100 | 246–261 |
| 1 | IR | 0.1–0.7 | 10–12 Mar | 2100 | 246–261 |
| 1 | Int | 0.1–0.7 | 10 Mar | 125 | 255–258 |
| 1 | Int | ≥ 0.7 | 10 Mar | 125 | 255–258 |
| 1 | Int | 0.1–0.7 | 11 Mar | 137 | 253–256 |
| 1 | Int | ≥ 0.7 | 11 Mar | 137 | 253–256 |
| 2 | IR | ≥ 0.7 | 26 Feb–01 Mar | 3344 | 248–260 |
| 2 | Int | ≥ 0.7 | 26 Feb | 146 | 257–260 |
| 2 | Int | ≥ 0.7 | 28 Feb | 90 | 252–255 |
| 2 | Int | ≥ 0.7 | 01 Mar | 154 | 248–254 |
| 3 | IR | ≥ 0.7 | 02–07 Mar | 2967 | 250–267 |
| 3 | Int | ≥ 0.7 | 06 Mar | 111 | 251–258 |
| 4 | IR+SDR.* | ≥ 0.7 | 22 Feb | 243 | 259–260 |

* Ice residuals (IR) and dried supercooled droplets (SDR).

Chemical composition and mixing-state of ice residuals

M. Ebert et al.

Title Page

Abstract

Introduction

Conclusions

References

Tables

Figures

⏪

⏩

◀

▶

Back

Close

Full Screen / Esc

Printer-friendly Version

Interactive Discussion



Table 2. Criteria for classification of particle groups.

| particle group | criteria* | description |
|--------------------------|--|---|
| Pb bearing | Pb detected as major or minor component as well as heterogeneous inclusion | anthropogenic or mixture of anthropogenic Pb-component and other particle group |
| C-O-S silicate | C+O+S>90% and C>40% Si+Al+O>60% | secondary aerosols/soot-mixtures external silicates (soil) |
| Al rich sulfates | Al>50% and Si<5% S>30% and C<40% | natural or artefact aged sea salt or secondary aerosols |
| sea salt | Na>30% and Cl>8% | sea salt |
| Ca rich complex mixtures | Ca>25% and Si+Al<20% internal mixtures of two or more other particle groups | soil 75% contain silicates and/or metal oxides (Fe, Ti) as main component |
| other | not in the above mentioned classes | – |

* X-ray intensity of elements relative to the sum of net counts of all elements with $5 < Z < 83$.

Chemical composition and mixing-state of ice residuals

M. Ebert et al.

[Title Page](#)
[Abstract](#)
[Introduction](#)
[Conclusions](#)
[References](#)
[Tables](#)
[Figures](#)
[⏪](#)
[⏩](#)
[◀](#)
[▶](#)
[Back](#)
[Close](#)
[Full Screen / Esc](#)
[Printer-friendly Version](#)
[Interactive Discussion](#)


Table 3. Relative particle group number abundance (%) of the different particle groups of ice residuals (IR) and interstitial samples (Int) for four cloud events ($d_p \geq 0.7 \mu\text{m}$).

| | cloud event 1 | | cloud event 2 | | cloud event 3 | | cloud event 4 |
|--------------------|---------------|-----|---------------|-----|---------------|-----|---------------|
| | IR | Int | IR | Int | IR | Int | IR+SDR* |
| Pb bearing | 19 | 0 | 9 | 1 | 24 | 1 | 2 |
| C, O, S | 27 | 7 | 22 | 17 | 17 | 9 | 21 |
| silicate | 14 | 32 | 19 | 27 | 14 | 19 | 9 |
| Al-rich | 0 | 4 | 0 | 2 | 5 | 1 | 7 |
| sulfates | 11 | 21 | 24 | 42 | 11 | 44 | 28 |
| sea-salt | 10 | 29 | 7 | 4 | 6 | 23 | 11 |
| Ca-rich | 4 | 4 | 6 | 4 | 7 | 1 | 4 |
| complex mixtures | 10 | 2 | 9 | 1 | 15 | 0 | 7 |
| other | 4 | 1 | 4 | 3 | 0 | 1 | 11 |
| N_{total} | 617 | 512 | 502 | 447 | 718 | 277 | 621 |

N_{total} = total number of analyzed particles.

* Ice residuals (IR) and dried supercooled droplets (SDR).

Chemical composition and mixing-state of ice residuals

M. Ebert et al.

Title Page

Abstract

Introduction

Conclusions

References

Tables

Figures

⏪

⏩

◀

▶

Back

Close

Full Screen / Esc

Printer-friendly Version

Interactive Discussion



Table 4. Relative particle group number abundance (%) of the different particle groups of ice residuals (IR) and interstitial (Int) samples ($0.1 \leq d_p \leq 0.7 \mu\text{m}$).

| particle group | cloud event 1 | |
|--------------------|---------------|------|
| | IR | Int |
| Pb bearing | 20 | 1 |
| C, O, S | 30 | 20 |
| silicate | 12 | 4 |
| Al rich | 10 | 0 |
| sulfates | 14 | 71 |
| sea salt | 6 | 0 |
| Ca rich | 2 | 1 |
| complex mixtures | 2 | 2 |
| other | 3 | 1 |
| N_{total} | 1162 | 2313 |

N_{total} = total number of analyzed particles.

Chemical composition and mixing-state of ice residuals

M. Ebert et al.

Title Page

Abstract

Introduction

Conclusions

References

Tables

Figures

⏪

⏩

◀

▶

Back

Close

Full Screen / Esc

Printer-friendly Version

Interactive Discussion



Table 5. Relative abundance of homogeneous Pb-rich particles and particles with Pb-inclusions within the group “Pb-bearing particles” in IR samples.

| | abundance of Pb bearing particles (%) | | |
|-------------------------------|---------------------------------------|---------------|---------------|
| | cloud event 1 | cloud event 2 | cloud event 3 |
| homogeneous Pb-rich particles | 14 | 22 | 10 |
| <i>Pb inclusion within:</i> | | | |
| silicate | 25 | 43 | 42 |
| C, O, S | 12 | 0 | 14 |
| sea salt/sulfate | 19 | 28 | 16 |
| Ca-rich | 3 | 0 | 5 |
| metal oxides | 0 | 0 | 3 |
| Al rich | 2 | 0 | 9 |
| other | 25 | 7 | 2 |
| N_{total} | 355 | 46 | 175 |
| abundance in IR samples* | 20 | 9 | 24 |

N_{total} = total number of analyzed Pb-bearing particles.

* relative abundance (%) of Pb-bearing particles in IR sample.

Chemical composition and mixing-state of ice residuals

M. Ebert et al.

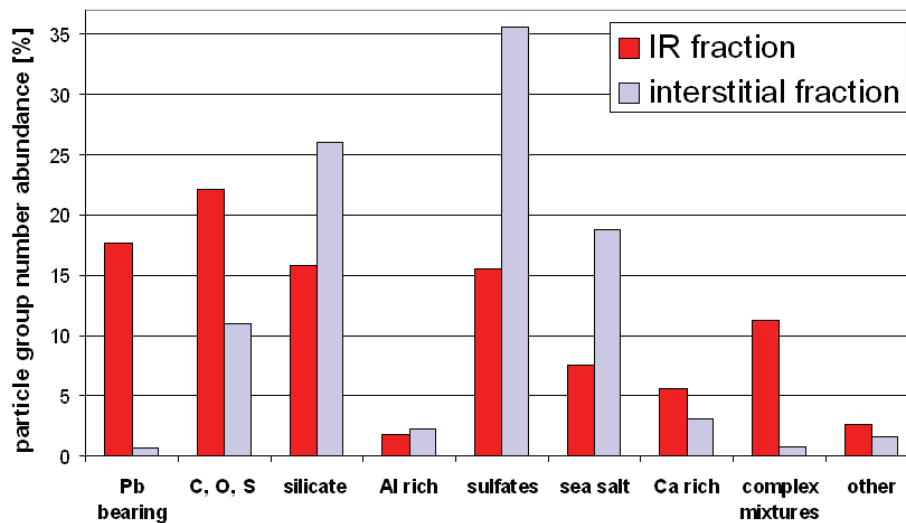


Fig. 1. Average particle group number abundance within ice residuals (IR) and interstitial samples within mixed phase clouds ($d_p \geq 0.7 \mu\text{m}$) for cloud events 1–3 (C, O, S=soot/secondary material mixtures; ~75% of the complex mixtures contain silicates and/or metal oxides).

[Title Page](#)[Abstract](#)[Introduction](#)[Conclusions](#)[References](#)[Tables](#)[Figures](#)[⏪](#)[⏩](#)[◀](#)[▶](#)[Back](#)[Close](#)[Full Screen / Esc](#)[Printer-friendly Version](#)[Interactive Discussion](#)

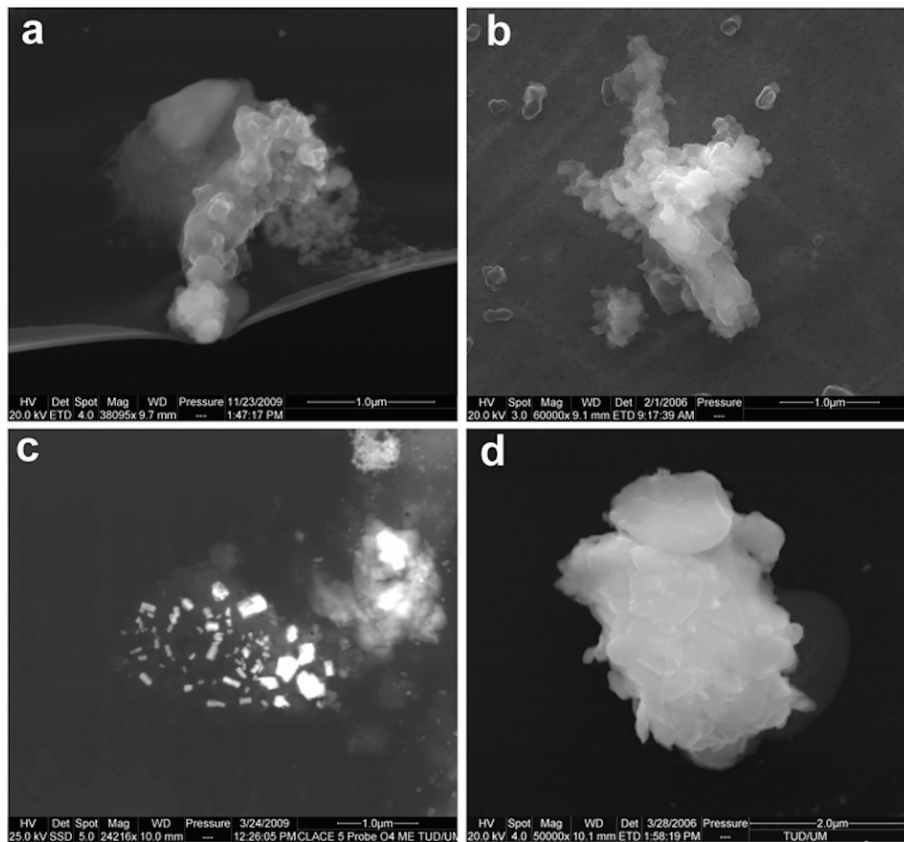


Fig. 2. Secondary electron image of **(a)** C-O-S particle, **(b)** Al-rich particle; **(c)** Pb-bearing particle (bright inclusions) and **(d)** complex internal mixture (silicate/sulfate).

Chemical composition and mixing-state of ice residuals

M. Ebert et al.

Title Page

Abstract

Introduction

Conclusions

References

Tables

Figures

⏪

⏩

◀

▶

Back

Close

Full Screen / Esc

Printer-friendly Version

Interactive Discussion



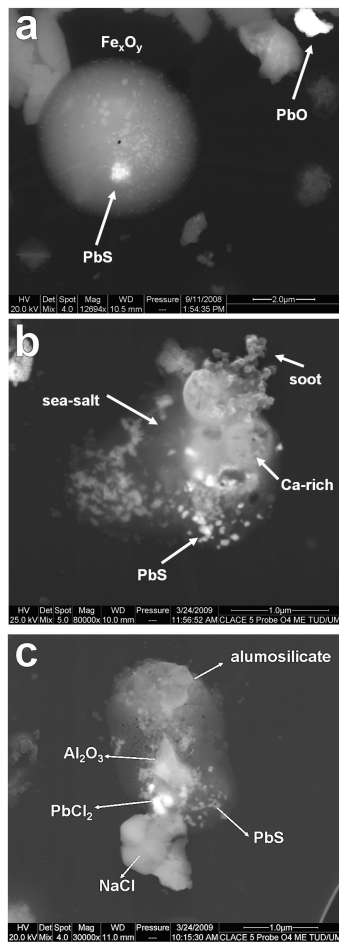


Fig. 3. Mixed secondary/backscatter electron images of Pb-bearing particles.

23893

Chemical composition and mixing-state of ice residuals

M. Ebert et al.

Title Page

Abstract

Introduction

Conclusions

References

Tables

Figures

◀

▶

◀

▶

Back

Close

Full Screen / Esc

Printer-friendly Version

Interactive Discussion



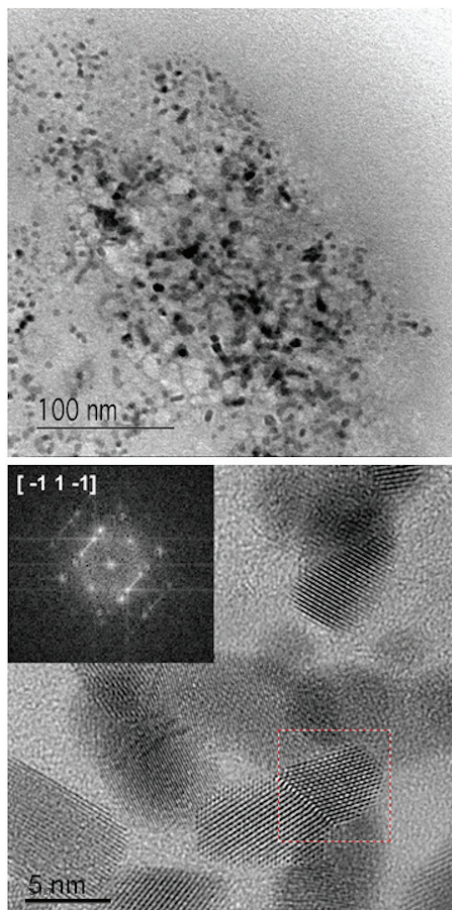


Fig. 4. (a) TEM bright field image of PbS-inclusions in a sulphate particle, and (b) HR-TEM bright field image and pseudo-diffraction pattern of the inclusions.