

Supplementary Figures

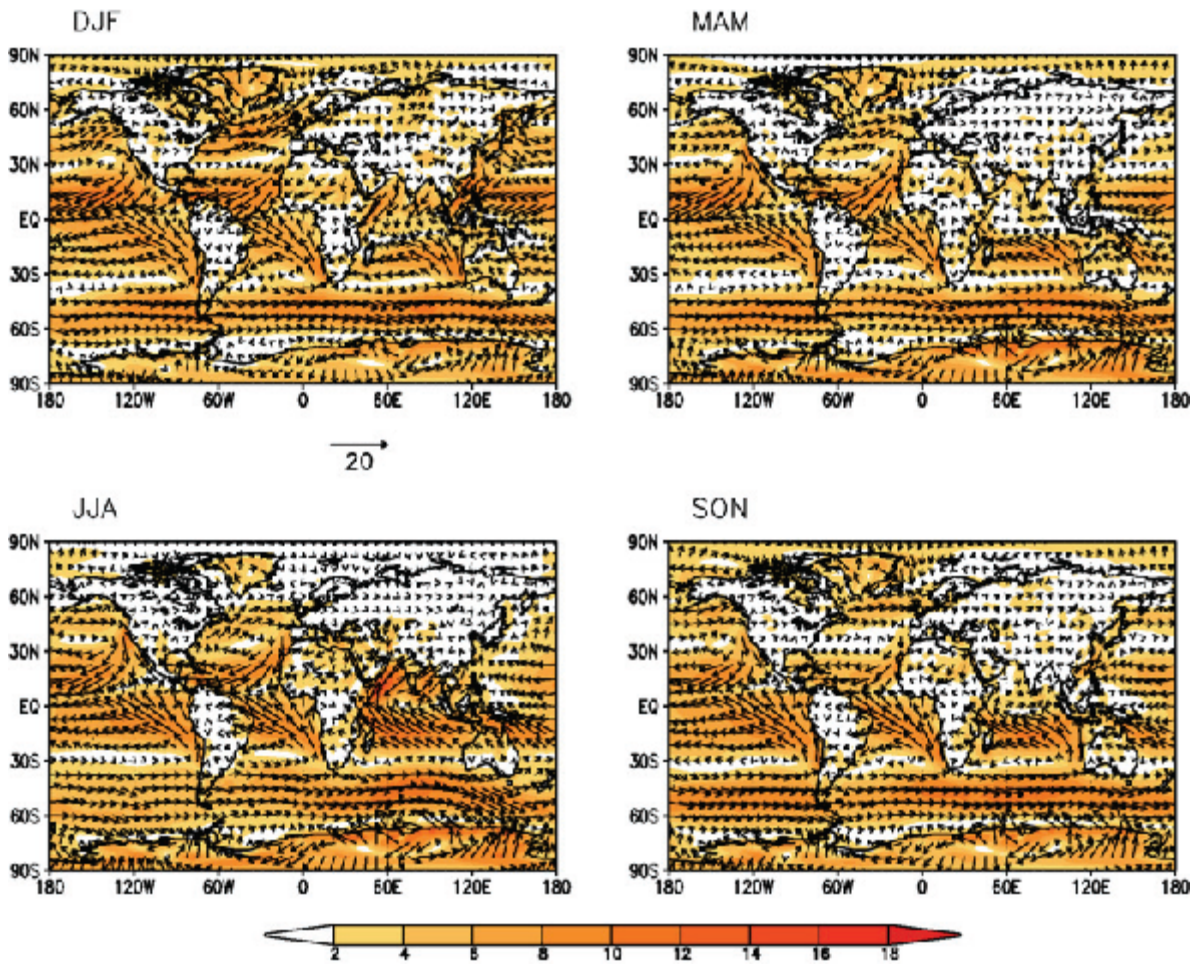


Fig. S1: Averaged wind speed and direction for four seasons at 1000hPa. The ERA-Interim data for 3 years from 2006 to 2009 are used for the analysis.

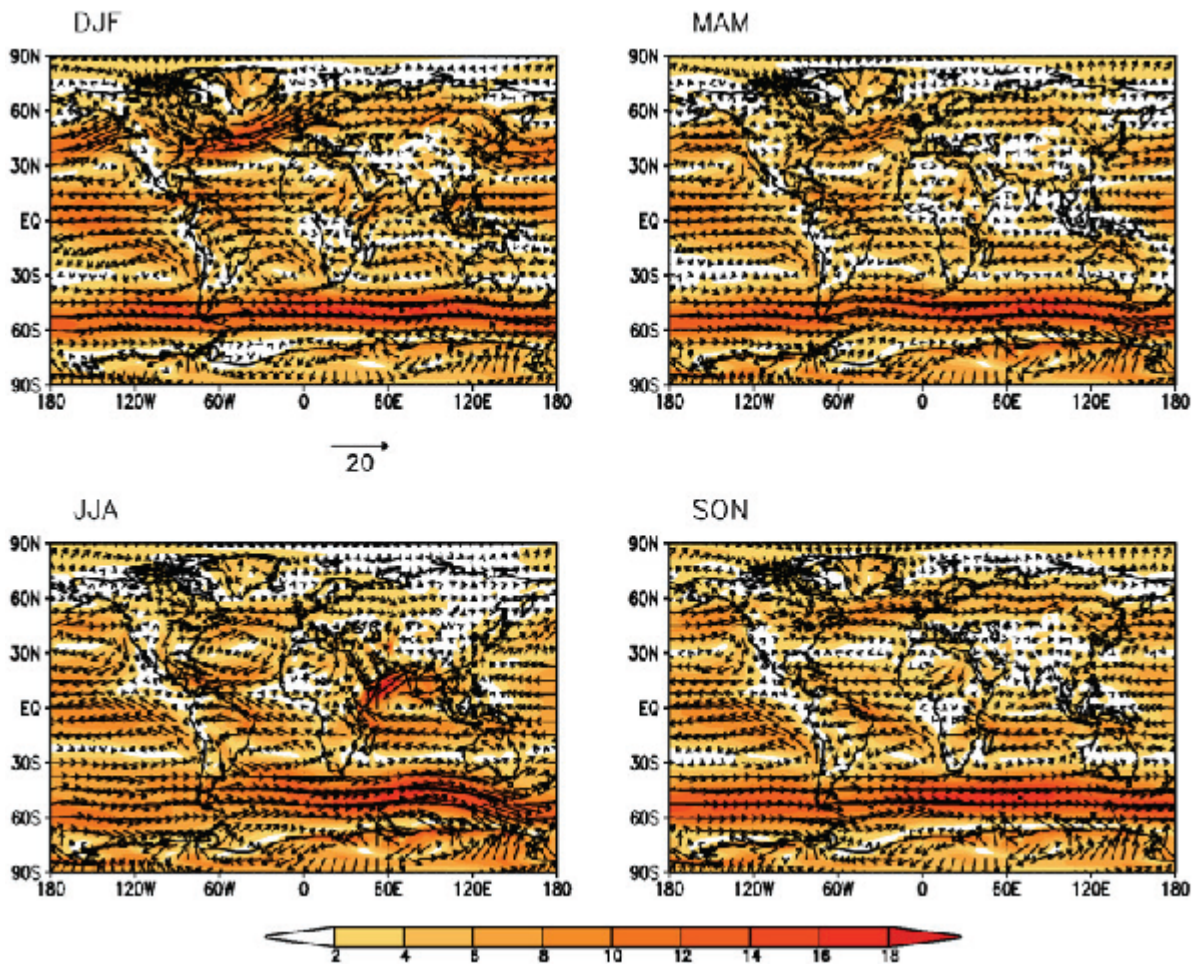


Fig. S2: Same is in Fig. S1, but for the 850hPa level.

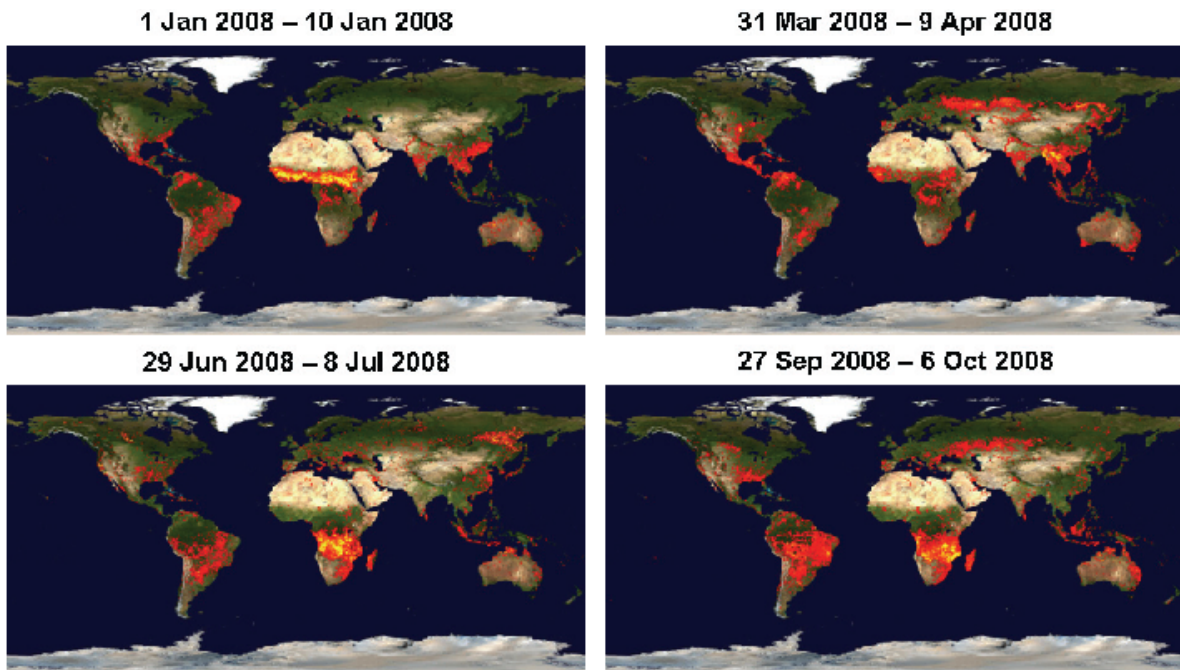


Fig. S3: A typical global distribution of biomass burning hotspots in four seasons. The 10-day composites derived from the MODIS sensor for the selected four periods in 2008 are shown. Each red dot in figures above indicates that there was at least one biomass burning event at that location during 10 selected days.