

**Results from smog
chamber experiments**

R. Chirico et al.

**Impact of aftertreatment devices on
primary emissions and secondary organic
aerosol formation potential from in-use
diesel vehicles: results from smog
chamber experiments**

R. Chirico^{1,2}, P. F. DeCarlo¹, M. F. Heringa¹, T. Tritscher¹, R. Richter¹,
A. S. H. Prevot¹, J. Dommen¹, E. Weingartner¹, G. Wehrle¹, M. Gysel¹,
M. Laborde¹, and U. Baltensperger¹

¹Laboratory of Atmospheric Chemistry, Paul Scherrer Institut, 5232 Villigen PSI, Switzerland

²Italian National Agency for New Technologies, Energy and Sustainable Economic
Development (ENEA), FIS-LAS, Via E. Fermi 45, 00044 Frascati, Italy

Received: 9 June 2010 – Accepted: 14 June 2010 – Published: 30 June 2010

Correspondence to: A. S. H. Prevot (andre.prevot@psi.ch)

Published by Copernicus Publications on behalf of the European Geosciences Union.

Title Page

Abstract

Introduction

Conclusions

References

Tables

Figures

◀

▶

◀

▶

Back

Close

Full Screen / Esc

Printer-friendly Version

Interactive Discussion



Abstract

Diesel particulate matter (DPM) is a significant source of aerosol in urban areas and has been linked to adverse health effects. Although newer European directives have introduced increasingly stringent standards for primary PM emissions, gaseous organics emitted from diesel cars can still lead to large amounts of secondary organic aerosol (SOA) in the atmosphere. Here we present results from smog chamber investigations characterizing the primary organic aerosol (POA) and the corresponding SOA formation at atmospherically relevant concentrations for three in-use diesel vehicles with different exhaust aftertreatment systems. One vehicle lacked exhaust aftertreatment devices, one vehicle was equipped with a diesel oxidation catalyst (DOC) and the final vehicle used both a DOC and diesel particulate filter (DPF). The experiments presented here were obtained from the vehicles at conditions representative of idle mode, and for one car in addition at a speed of 60 km/h. An Aerodyne high-resolution time-of-flight aerosol mass spectrometer (HR-ToF-AMS) was used to measure the organic aerosol (OA) concentration and to obtain information on the chemical composition. For the conditions explored in this paper, primary aerosols from vehicles without a particulate filter consisted mainly of black carbon (BC) with a low fraction of organic matter (OM, $OM/BC < 0.5$), while the subsequent aging by photooxidation resulted in a consistent production of SOA only for the vehicles without a DOC and with a deactivated DOC. After 5 h of aging $\sim 80\%$ of the total organic aerosol was on average secondary and the estimated "emission factor" for SOA was 0.23–0.56 g/kg fuel burned. In presence of both a DOC and a DPF, primary particles with a mobility diameter above 5 nm were $300 \pm 19 \text{ cm}^{-3}$, and only 0.01 g SOA per kg fuel burned was produced within 5 h after lights on. The mass spectra indicate that POA was mostly a non-oxidized OA with an oxygen to carbon atomic ratio (O/C) ranging from 0.097 to 0.190. Five hours of oxidation led to a more oxidized OA with an O/C range of 0.208 to 0.369.

Results from smog chamber experiments

R. Chirico et al.

Title Page

Abstract

Introduction

Conclusions

References

Tables

Figures

◀

▶

◀

▶

Back

Close

Full Screen / Esc

Printer-friendly Version

Interactive Discussion



1 Introduction

Since 1990 the number of new diesel passenger cars registered in Western Europe has been increasing. In 2007, 14.7 million cars were registered and 53.3% of these cars were diesel powered, compared to 50.8% in 2006 (ACEA, February 2008). Particulate Matter from diesel engines (DPM) has been a great concern in the past years. DPM contains toxic chemicals including as polycyclic aromatic hydrocarbons (PAHs) which are known to cause damage to genetic material and are considered carcinogenic. These compounds can be transferred into the bloodstream after exposure to DPM (US EPA, 2002). Available evidence indicates that there are adverse health effects associated with exposure to DPM including acute exposure-related symptoms, chronic exposure-related non-carcinogenic respiratory effects, and chronic exposure-related carcinogenic effects (US EPA, 2002; Pope and Dockery, 2006).

The emission standards for diesel passenger vehicles are regulated by several European Union directives, which define increasingly stringent standards. EURO 3 (introduced in 2000) allowed a particle emission rate of 0.05 g/km which was reduced to 0.025 g/km in 2005 (EURO 4) and to 0.005 g/km in 2009 (EURO 5). More information on regulations and limits can be found at http://europa.eu/legislation_summaries/environment/air_pollution/index_en.htm.

Diesel particles are a complex mixture of partially burned and unburned organic matter (OM) from fuel and lubrication oil, solid elemental carbonaceous material (EC) or when measured by optical techniques termed black carbon (BC), sulfate, ash and others (Kittelson, 1998). The emission rates of the solid carbonaceous material and OM depend on various factors: engine temperature and load, aftertreatment devices and dilution of exhaust (Sharma et al., 2005; Lipsky and Robinson, 2006; Leskinen et al., 2007; Tang et al., 2007).

Since 1998 aftertreatment devices such as diesel oxidation catalysts (DOC) have become mandatory for new diesel vehicles in Europe. DOCs were introduced to control carbon monoxide (CO) and hydrocarbons (HC) emissions and to help in the reduction

Results from smog chamber experiments

R. Chirico et al.

Title Page

Abstract

Introduction

Conclusions

References

Tables

Figures

◀

▶

◀

▶

Back

Close

Full Screen / Esc

Printer-friendly Version

Interactive Discussion



Results from smog chamber experiments

R. Chirico et al.

[Title Page](#)[Abstract](#)[Introduction](#)[Conclusions](#)[References](#)[Tables](#)[Figures](#)[◀](#)[▶](#)[◀](#)[▶](#)[Back](#)[Close](#)[Full Screen / Esc](#)[Printer-friendly Version](#)[Interactive Discussion](#)

of primary particulate mass. DOC may oxidize a fraction of the organic constituents of the particulate matter resulting in a reduction of the total emitted particulate mass. The reduction in the overall particulate matter (PM) emissions is around 5–40% depending on the relative organic content of the PM (Walker, 2004; Fino, 2007). To comply with the lower limits introduced by the European directives, different types of diesel particulate filters (DPF) have been developed. The wall-flow filter is most widely used and it has a trapping efficiency of nearly 100% (Walker, 2004; Fino, 2007).

PM emission measurements operated with low dilution ratios likely overestimate the emitted fine particle mass because at low dilution ratios less evaporation occurs for some particle-associated organics (Robinson et al., 2007). Recent findings have shown that the mass of PM with an aerodynamic diameter less than $2.5\ \mu\text{m}$ ($\text{PM}_{2.5}$) emitted by a diesel power generator with no aftertreatment devices can decrease by 50% when the dilution ratio is increased from 20:1 to 350:1 (Lipsky and Robinson, 2006). This mass reduction has been associated with semi-volatile organic compounds (SVOCs) which repartition to the gas phase with increasing dilution to maintain thermodynamic equilibrium (Lipsky and Robinson, 2006). SVOCs in the atmosphere can be involved in photochemical reactions, which often lead to products of lower volatility than the parent compounds. These compounds may contribute to the formation of secondary organic aerosol (SOA).

Organic compounds are oxidized by reactions with oxidants like hydroxyl radicals (OH) and ozone (O_3), and their partitioning to the particle phase as SOA can be described by an absorptive mechanism (Pankow, 1994b). Saturation vapor pressure and the organic mass loading of the aerosol are two important parameters that affect the gas/particle partitioning of organic molecules as described by the absorption model. Secondary aerosol formation, through absorption of semi-volatile organic compounds into the condensed organic phase, can occur even when the gas phase pressures of those compounds are below their saturation vapor pressures (Pankow, 1994a). As OA concentration increases, a higher fraction of an organic species will partition to the particulate phase.

Results from smog chamber experiments

R. Chirico et al.

[Title Page](#)[Abstract](#)[Introduction](#)[Conclusions](#)[References](#)[Tables](#)[Figures](#)[◀](#)[▶](#)[◀](#)[▶](#)[Back](#)[Close](#)[Full Screen / Esc](#)[Printer-friendly Version](#)[Interactive Discussion](#)

The oxidation of SVOCs can contribute to the SOA production in the atmosphere, which is often underestimated by explicit chemical models of secondary organic aerosol (Volkamer et al., 2006; Robinson et al., 2007). In fact, the oxidation of traditionally investigated SOA precursors such as light aromatics can explain only a small fraction of the SOA formed from the photooxidation of exhaust from a power generator during smog chamber experiments (Weitkamp et al., 2007). Accounting for partitioning and aging of SVOCs a considerable amount of regional SOA is predicted, which exceeds the SOA predicted by traditional models that do not take into account repartition of SVOCs (Robinson et al., 2007).

Currently, there is a lack of information about the secondary aerosol formation potential from in-use diesel passenger vehicles, and the effect of aftertreatment devices on the SOA formation potential. In this paper we present investigations of the contribution of emissions from diesel passenger cars to primary (directly emitted) organic aerosol (POA) and SOA formed during smog chamber experiments. The experiments presented here were obtained from one vehicle lacking aftertreatment devices, one vehicle equipped with a DOC, and one vehicle equipped with both a DOC and DPF. All vehicles were tested for conditions representing engine idling. 60 km/h conditions were simulated for the vehicle with a DOC. Characterization of POA and estimates of the SOA formation will be presented. Additionally the first high mass resolution characterization of the evolution of the aerosol mass spectra with an Aerodyne HR-ToF-AMS will be presented. Finally, pure SOA mass spectra from experiments with only the gas phase of the exhaust will also be shown.

2 Materials and methods

2.1 Smog chamber setup and summary of general procedure and experiments

The experiments were carried out in the smog chamber at the Paul Scherrer Institute (PSI) in Switzerland. The 27-m³ Teflon bag is temperature controlled by two cooling

units which provide a stabilized temperature within the range of 20–25 °C. Four xenon arc light sources are used to simulate solar irradiation. The chamber is equipped with various instruments to monitor the gas and the particle phases during an experiment (Paulsen et al., 2005).

5 A new injection system was developed to deliver a representative and consistent sample of the diesel exhaust into the chamber (Fig. 1). Zero air, supplied by a pure air generation system (737–250 series, AADCO Instruments, Inc., USA), was used to rapidly dilute the exhaust by a factor of approximately 7 with an ejector diluter (Dekati Ltd., Tampere, Finland) to avoid particle coagulation. The line from the tailpipe including the ejector diluter and the dilution air was maintained at 150 °C to avoid condensation of SVOCs. A filter designed for hot gas analysis usable up to 500 °C with a stainless steel housing (borosilicate glass microfiber filter, HC free and H131R, Headline filters), offered a method of particle free sample introduction into the smog chamber. This filtering system (heated to 150 °C) was used in some experiments to simulate a DPF. The filter specifications from the manufacturer indicate a removal efficiency greater than 10 15 99.5% for particles with a diameter of 100 nm.

In addition, experiments with the sampling line and the dilution air at 80 °C were performed to evaluate the effect of the dilution temperature on POA and SOA formation. The concentrations of the POA and the aged OA from experiments at 80 °C were within the range of concentrations obtained from the same type of experiments with the sampling line and the dilution air at 150 °C.

20 The carbon dioxide (CO₂) concentration in the exhaust was measured with a CO₂ analyzer (LI-7000, LI-COR Biosciences) before the ejector diluter and in the smog chamber to calculate the exhaust dilution ratio. The background CO₂ concentrations in the chamber were also measured before the injection of the exhaust, to correct for background levels in the dilution ratio calculations.

25 Depending on the organic concentration and the total aerosol concentration desired for an experiment, the flow used to fill the bag for total emission experiments was either 12 L/min or 33 L/min, and the filling time ranged from 7 to 20 min. For the vehicle

Results from smog chamber experiments

R. Chirico et al.

Title Page

Abstract

Introduction

Conclusions

References

Tables

Figures

◀

▶

◀

▶

Back

Close

Full Screen / Esc

Printer-friendly Version

Interactive Discussion



equipped with both a DOC and DPF the flow used to fill the bag was about 33 L/min and the filling time was 30–40 min. For the experiments with only the gas phase 3 L/min through the filter was used and the filling time was 1 h. After injection, 5–10 min were allowed for homogenization and mixing of the exhaust in the bag. Following the mixing, instruments sampled for approximately 1 h to characterize the primary emissions.

Prior to switching on the lights, ozone (O_3) was added to the exhaust in the chamber, while propene (C_3H_6) was added after lights on. During preliminary experiments, photochemistry and subsequent SOA production was suppressed due to the high concentration of nitrogen monoxide (NO) present in the exhaust. Therefore, ozone was added to fully titrate the NO to nitrogen dioxide (NO_2), and propene was introduced to increase the VOC/ NO_x ratio. The addition of propene was adjusted such that a propene to NO_x ratio of 4:1 was obtained. Propene has often been added in SOA experiments as a photochemical initiator and to raise OH levels, and is not considered to be a relevant SOA precursor (Odum et al., 1996; Cocker et al., 2001) and may even reduce SOA yield (Song et al., 2007).

After each experiment the smog chamber was cleaned by adding several ppm of ozone for 2–3 h and then purging it with zero air for at least 24 h before the next experiment. Before each experiment the chamber was checked for zero particle level with a condensation particle counter.

Blank experiments were performed once every 2–3 weeks to check the effectiveness of the cleaning procedure for those species object of this work. During blank experiments the instruments sampled from the empty chamber for several hours with lights on.

In this paper we present results from 20 experiments. Table 1 describes the type of experiments performed, the operating conditions of the cars during the filling period, and the relevant initial conditions for the experiments. The total dilution ratios of the exhaust in the chamber are also reported in Table 1. The terms “cold idle” and “warm idle” refer to a cold engine start including idle mode and to exhaust from a warm engine at idle mode, respectively.

Results from smog chamber experiments

R. Chirico et al.

Title Page

Abstract

Introduction

Conclusions

References

Tables

Figures

◀

▶

◀

▶

Back

Close

Full Screen / Esc

Printer-friendly Version

Interactive Discussion



2.2 Vehicle descriptions

Three different commonly used passenger vehicles were used for our smog chamber experiments:

1. A EURO 2 Volkswagen Transporter TDI Syncro from December 2000, with a mileage of 109 000 km not equipped with emission abatement devices. This vehicle will be referred to as “Transporter” throughout the manuscript;
2. A EURO 3 Opel Astra 2.0 DTI from February 2002, with a mileage of 45 000 km equipped with a DOC. This vehicle will be referred to as “Astra” throughout the manuscript;
3. A EURO 3 Citroen C5 2.2 HDI from June 2001, with a mileage of 107 000 km equipped with a diesel oxidation catalyst and a particulate filter (FAP 130 PS). The particulate filter of the Citroen was replaced before the experiments when the car had a mileage of 103 000 km. This vehicle will be referred to as “Citroen” throughout the manuscript.

Prior to experiments, the Astra was driven on a flat road to assess the engine parameters such as revolutions per minute (RPM), fuel consumption and water temperature at different speeds. Those values were then used to simulate a 60 km/h speed with this car at the smog chamber. To accomplish this, the front of the car was lifted, placed on blocks and the front wheels removed. The load and speed conditions of 60 km/h were reproduced as follows: the brake line pressure was controlled using a pressurized gas bottle and the accelerator pedal was pressed until the fuel consumption was 4 L/100 km at a virtual speed of 60 km/h. In this way an engine load similar to real driving conditions was achieved.

Results from smog chamber experiments

R. Chirico et al.

Title Page

Abstract

Introduction

Conclusions

References

Tables

Figures

◀

▶

◀

▶

Back

Close

Full Screen / Esc

Printer-friendly Version

Interactive Discussion



2.3 Instrumentation

2.3.1 High Resolution Time-of-Flight Aerosol Mass Spectrometer (HR-ToF-AMS)

The Aerosol Mass Spectrometer (AMS) provides an averaged mass spectrum (MS) and the size-resolved non-refractory chemical characterization for an ensemble of sub-micron aerosol particles (PM_{10}) with a typical time resolution of seconds. A detailed description of the HR-ToF-AMS is reported elsewhere (DeCarlo et al., 2006), however a brief description is given here. Particles are introduced into the instrument via an aerodynamic lens focusing the particles into a tight beam. The focused particle beam is then directed into differentially pumped chambers under vacuum and towards a tungsten heater in the ionization region of the instrument. In the ionization region, particles impact on the 600 °C heater and non-refractory species are vaporized and the resulting gas phase plume is ionized with electron ionization (70 eV). Ions are then directed into the ToF mass spectrometer. The AMS inlet system shows 100% transmission efficiency to the detector for particles in the vacuum aerodynamic diameter range 70–500 nm and substantial transmission for particles in the 30–70 nm and 500 nm–1.5 μ m ranges for spherical particles (Liu et al., 2007). For non-spherical particles, the vacuum aerodynamic diameter is correlated to the volume equivalent diameter by the particle density, the standard density and the dynamic shape factor (DeCarlo et al., 2004).

The high mass resolution of the ToF mass spectrometer allows for the quantification of different ions contributing to a nominal m/z . The ability to distinguish these ions, allows for atomic ratios to be determined (e.g. O/C, H/C atomic ratios) as well as the organic mass to organic carbon (OM/OC) ratio (Aiken et al., 2007, 2008). The detected ions can also be grouped into different inorganic and organic classes (C_xH_y , $C_xH_yO_z$, S_xO_y , N_xO_y , etc.) on the basis of the atomic composition for each ion (DeCarlo et al., 2006) and in this paper we focused on the 4 organic classes present: CH, CHO (includes also fragments with only C and O), CHN, and CHON.

AMS data can be used to identify different organic aerosol classes, such as hydrocarbon-like (HOA) and oxidized organic aerosols (OOA), which have different

Results from smog chamber experiments

R. Chirico et al.

Title Page

Abstract

Introduction

Conclusions

References

Tables

Figures

◀

▶

◀

▶

Back

Close

Full Screen / Esc

Printer-friendly Version

Interactive Discussion



mass spectral signatures (Zhang et al., 2005b; Lanz et al., 2007).

Data analysis was performed in Igor Pro 6.03A (Wavemetrics, Lake Oswego, OR) using the ToF-AMS Analysis Toolkit Squirrel v.1.44 and the ToF-AMS HR Analysis Toolkit PIKAv.1.04 (<http://cires.colorado.edu/jimenez-group/ToFAMSResources/ToFSoftware/index.html>). For the elemental analysis the data were analyzed based on the method described in Aiken et al. (2007, 2008).

In order to keep the AMS operating in optimal conditions, several checks and calibrations were performed before the beginning of every campaign and before each experiment. The flow calibration, the servo position check, the lens alignment and the size calibration were performed at the beginning of each campaign, while the ionization efficiency (IE) calibration was performed every week, the baseline, the m/z and single ion calibrations were performed before each experiment (more details about the basic principle of each calibration can be found in http://cires.colorado.edu/jimenez-group/wiki/index.php/Field_Data_Analysis_Guide and http://cires.colorado.edu/jimenez-group/QAMSResources/Docs/AMS_manual_latest.pdf). The averaging time was 2 min in V mode or W mode, and in V mode the AMS alternated between MS mode and PToF mode every 10 s.

The AMS fragmentation table (Allan et al., 2004) was modified to account for the contribution of the gas phase species to m/z 16–20, 29, and 44. Gas-phase corrections were made by analyzing HEPA filtered air from the smog chamber after filling. Additionally, the organic contribution to m/z 28 (CO^+) and to m/z 18 (H_2O^+) were estimated to be 100% and 22.5% of the CO_2^+ (m/z 44) signal, respectively, and the contributions to m/z 17 and m/z 16 were set to 25% and 4% of the signal at m/z 18 as suggested by Aiken et al. (2008). Only organic ions (C_3H_3^+) contributed to the difference mass spectrum at m/z 39 in these experiments in contrast to other aerosol types where potassium can be significant at m/z 39.

A particle collection efficiency (CE) of unity was assumed to estimate the non-refractory aerosol mass concentration. The CE of solid particles coated with liquid organics depends on the thickness of the coating (Matthew et al., 2008). For flame gen-

Results from smog chamber experiments

R. Chirico et al.

Title Page

Abstract

Introduction

Conclusions

References

Tables

Figures

◀

▶

◀

▶

Back

Close

Full Screen / Esc

Printer-friendly Version

Interactive Discussion



erated soot from propene a CE between about 90% and 95% was estimated (Slowik et al., 2004). The high fraction of black carbon in the primary particles (OM/BC=0.11–0.46) did not allow us to estimate the CE with confidence by mass closure with co-located instruments (MAAP and TEOM).

2.3.2 Aethalometer

The Aethalometer (AE31, Magee Scientific Company, Berkeley, CA) collects aerosols on a quartz filter and simultaneously measures the attenuation of light through the filter at various wavelengths. The attenuation coefficients at a wavelength of $\lambda=880$ nm were used for the BC mass calculation with the Aethalometer. BC concentrations were calculated using a mass specific attenuation cross section of $16.6 \text{ m}^2/\text{g}$ (particles plus filter effects) and were empirically corrected for the shadowing effect (Weingartner et al., 2003). A double exponential fit was applied to smooth the BC data for wall loss correction calculations.

2.3.3 Multi Angle Absorption Photometer (MAAP)

The Multi Angle Absorption Photometer (MAAP, Model 5012, Thermo) measures the BC content of the aerosols simultaneously measuring the optical absorption and scattering of light by the particles collected on a glass fiber filter. A mass specific absorption cross section of $6.6 \text{ m}^2/\text{g}$ at $\lambda=630$ nm (particles only) is used by the MAAP to convert the absorption measurement into a BC mass concentration. The MAAP was operated with a flow of 4 L/min. A double exponential fit was applied to smooth the BC data for wall loss correction calculations.

2.3.4 Single Particle Soot Photometer (SP2)

During later experiments the BC mass was also directly measured by a Single Particle Soot Photometer (SP2; Droplet Measurement Technologies; Stephens et al., 2003). The SP2 uses laser-induced incandescence for quantitative detection of the refractory

Results from smog chamber experiments

R. Chirico et al.

Title Page

Abstract

Introduction

Conclusions

References

Tables

Figures

◀

▶

◀

▶

Back

Close

Full Screen / Esc

Printer-friendly Version

Interactive Discussion



BC mass in single particles independent of coatings with scattering materials (Moteki and Kondo, 2007; Slowik et al., 2007). The peak intensity of the detected incandescent light is proportional to the BC mass. Size-selected fullerene soot (Alfa Aesar), aquadag (Acheson), and glassy carbon (Alfa Aesar, type 2) were used to calibrate the instruments response curve. A minor part of the BC mass size distribution of diesel exhaust fell below the lower detection limit of the SP2 (1.4 fg BC corresponding to a black carbon effective diameter of ~ 115 nm). The BC mass below the cut was accounted for by fitting a lognormal distribution to the measured mass size distribution and integrating its area below the lower detection limit.

2.3.5 Tapered Element Oscillating Microbalance (TEOM)

Continuous real time measurements of particulate mass (PM_{10}) were performed with a tapered element oscillating microbalance (TEOM, Series 1400a, Thermo Scientific). Particulate mass is determined by measuring the change in the frequency of oscillation of the filter with increasing particulate loading. The PM mass was continuously determined via this method (every 3 s). Ten-point smoothing was applied to the three-second data to reduce the measurement noise.

2.3.6 NO_x analyzer

A Monitor Labs model ML9841A chemiluminescence NO_x analyzer was used to measure NO and NO_x ($NO+NO_2$). The instrument is equipped with a molybdenum converter (MOLYCON) which also converts organic nitrates and some nitric acid to NO (e.g., Steinbacher et al., 2007). Therefore, the instrument only provides reliable concentrations in the beginning of the experiment. NO molecules react with ozone to produce the excited NO_2^* which subsequently emit a broad-band radiation with a maximum at 1100 nm. The intensity of the radiation is proportional to the NO concentration. The instrument was calibrated before the beginning of each campaign with a 10 ppm NO gas bottle standard and NO-free air. A fix-point calibration was performed in the

Results from smog chamber experiments

R. Chirico et al.

[Title Page](#)[Abstract](#)[Introduction](#)[Conclusions](#)[References](#)[Tables](#)[Figures](#)[I◀](#)[▶I](#)[◀](#)[▶](#)[Back](#)[Close](#)[Full Screen / Esc](#)[Printer-friendly Version](#)[Interactive Discussion](#)

range 0–1000 ppb with subsequent NO dilution with zero air.

2.3.7 Ozone analyzer

Ozone was measured with an Ozone Analyzer Model 8810 (Monitor Labs Inc.). The Beer-Lambert relation is applied to the absorption of the light at 254 nm by ozone to quantify the ozone concentrations. Ozone Analyzer Model 8810 was referenced to another ozone analyzer (EnviroNics S 300) on a regular basis.

2.3.8 Carbon dioxide analyzer

CO₂ was measured with a differential, non-dispersive, infrared (NDIR) gas analyzer (LI-7000, LI-COR Biosciences). The CO₂ measurement is based on the difference in the absorption of IR radiation, produced by a tungsten filament, between a reference cell with a known CO₂ concentration and the sample cell. A two-point calibration in the range 0–560 ppm was performed with 560 ppm CO₂ gas bottle standard and CO₂-free air.

2.3.9 Total hydrocarbon (THC) analyzer

The gas-phase total hydrocarbon (THC) concentration was measured with a FID Model VE 7 (J.U.M. Engineering). This instrument uses a hydrogen flame ionization detector (FID) in a heated oven at 190 °C to prevent the loss of high molecular weight hydrocarbons. Signal measured as a voltage is proportional to the number of carbon atoms. The instrument was calibrated with a 1.5 ppm C₃H₈ gas bottle standard.

2.4 Deactivation of diesel oxidation catalyst

The catalytic performance of a DOC can gradually worsen throughout the vehicle's lifetime and the DOC aging (or deactivation) can be chemical and/or thermal. The thermal deactivation is of greater concern for the three-way catalysts (TWCs) than

Results from smog chamber experiments

R. Chirico et al.

Title Page

Abstract

Introduction

Conclusions

References

Tables

Figures

◀

▶

◀

▶

Back

Close

Full Screen / Esc

Printer-friendly Version

Interactive Discussion



for DOCs because the exhaust from a diesel engine is cooler than the exhaust from a gasoline engine (Andersson et al., 2007; Winkler et al., in press). The chemical deactivation is due to chemical compounds originated from engine oil additives, such as metal sulfonates and zinc-dialkyldithiophosphates, and from the fuel (sulfur). Oil-derived elements (P, Zn, Ca, Si) produce an irreversible chemical deactivation, while the sulfur compounds produce a reversible chemical deactivation (Kozak and Jerzy, 2005; Andersson et al., 2007; Winkler et al., 2010; P. Dimopoulos, Empa, personal communication, 2009). The interaction of sulfur dioxide (SO₂) present in the exhaust gas with the DOC can be physical and chemical. The physical interaction is the adsorption of SO₂ at the catalytic layer surface with consequent blockage of access to catalytic sites for the exhaust compounds. An example of chemical interaction is the reaction of sulfur compounds with the washcoat layer of the catalyst with formation of sulfates (Kozak and Jerzy, 2005).

The Astra used during the smog chamber experiments is a second-hand car from 2002 and was purchased by PSI at the end of 2007. Although we cannot conclusively demonstrate that the DOC was deactivated or poorly functioning, it is likely that during the first three experiments (#1–3 in Table 1), this was the case. Evidence for this hypothesis involves the low total mileage of the vehicle upon purchase, implying predominantly urban driving where the exhaust temperatures stay relatively low. Additionally, test bench measurements with this vehicle at the European Joint Research Center (JRC) in Ispra, Italy (Chirico et al., 2010a), showed that at speeds lower than 140 km/h the constituents of the particulate matter were BC and organic aerosols, while at 140 km/h (including the acceleration from 120 km/h to 140 km/h) 16±6% of the particulate matter measured was made of sulfates (Fig. S.2 in supplementary material) which likely originated from the high temperature oxidation of the adsorbed SO₂ to SO₃ on the DOC with subsequent release of sulfate species. These sulfates are interpreted to stem from the catalyst as the fuel used had a sulfur fuel content of less than 50 ppm.

Results from smog chamber experiments

R. Chirico et al.

Title Page

Abstract

Introduction

Conclusions

References

Tables

Figures

◀

▶

◀

▶

Back

Close

Full Screen / Esc

Printer-friendly Version

Interactive Discussion



After the first 3 experiments, the car was used under conditions simulating 60 km/h, was driven several times under highway conditions and across the Alps with high load and high temperature exhaust. In addition it was used in the aforementioned test bench measurements with speeds up to 140 km/h. Under these conditions, we hypothesize that by removal of the adsorbed sulfur compounds the DOC was regenerated and performance improved (Panayotis Dimopoulos, personal communication).

2.5 Comparison of BC measurements with Aethalometer and MAAP

During the first 2 experiments only the Aethalometer was used to measure BC while for the remaining experiments the MAAP and the Aethalometer were used together. The total mass measured during five experiments by the TEOM (experiment #8, 10, 11, 13 and 14) was compared to the mass obtained by the sum of BC mass (Aethalometer or MAAP) and the organic mass (AMS). The total mass given by the MAAP plus the AMS showed a better agreement with the total mass measured by the TEOM for all experiments. The BC measurements from the Aethalometer, before lights on, were by a factor of 1.46 ± 0.05 higher than the BC measurements with the MAAP. This factor was then used to scale down the BC concentration derived the Aethalometer measurements in the experiments when the MAAP was not co-sampling. Filter changes indicated that both instruments had a filter loading dependent behavior. An example experiment with the BC concentration from the Aethalometer, MAAP, and SP2 measuring simultaneously is shown in Fig. S.1 of the supplementary material.

3 Results and discussions

3.1 Direct on-line measurements of the primary emissions

The emission factors (EF) expressed in g/kg of burned fuel of BC, POA and gas-phase THC were estimated from direct measurements of the exhaust of the Transporter and

Results from smog chamber experiments

R. Chirico et al.

Title Page

Abstract

Introduction

Conclusions

References

Tables

Figures

◀

▶

◀

▶

Back

Close

Full Screen / Esc

Printer-friendly Version

Interactive Discussion



the Astra with activated DOC (Fig. S.3 in supplementary material). CO₂, black carbon (MAAP), THC and organic aerosol were measured directly from the sampling line after the dilution stage at low dilution ratios of ~1:7. The emission factors for various species were estimated in the following way:

$$EF(x) = 10^3 [x/CO_2] w_d \quad (1)$$

where, x is the concentration of BC, POA or THC in $\mu\text{g}/\text{m}^3$, the carbon dioxide concentration, CO₂, is expressed in $\mu\text{g}/\text{m}^3$, and w_d is the mass fraction of carbon in the diesel fuel (0.87) (Phuleria et al., 2006). This assumes that nearly all of the fuel carbon is emitted as CO₂. A comparison with the THC measurement shows that the highest THC contribution was ~1.5% of the CO₂ signal for the Transporter (no DOC or DPF). Note that the THC measurement includes contributions from e.g. lubricating oil, and not just fuel contributions, so 1.5% is an upper limit of THC contributions from fuel alone. Figure S.3 shows that the EF(THC) is on average ~5 times higher for the Transporter than for the Astra, which is assumed to be mainly due to the presence of the DOC in the latter.

The time-weighted average EF(POA), from the first 20 min of measurement after the engine start (cold start included), was 0.99 g/kg fuel and 1.2 g/kg fuel for the Astra and the Transporter, respectively. These values were 7 (Astra, cold idle) and 15 (Transporter) times higher than values measured during smog chamber experiments. This difference can be explained by lower dilution ratio (1:7) of the exhaust and subsequent partitioning of SVOCs during these tests compared to the smog chamber experiments with much higher dilution ratios (Robinson et al., 2007). Additionally, the EF(BC) for the first 20 min of measurements at the sampling line (1.2 g/kg fuel) was higher than the values estimated at the smog chamber. This is potentially a measurement artifact and is due to a larger fraction of condensed organic material at low dilution ratios enhancing the BC mass absorption efficiency and artificially increasing the estimated BC mass from the absorption measurement (Shiraiwa et al., 2010; Schnaiter et al., 2005).

Results from smog chamber experiments

R. Chirico et al.

Title Page

Abstract

Introduction

Conclusions

References

Tables

Figures

◀

▶

◀

▶

Back

Close

Full Screen / Esc

Printer-friendly Version

Interactive Discussion



3.2 Smog chamber experiments

3.2.1 Primary organic mass to black carbon mass ratios

The average organic matter to black carbon mass ratios (OM/BC) of the primary emissions from all experiments, measured from the smog chamber, were 0.28 ± 0.15 for a final dilution ratio between 60 and 1200. For the experiments at idle conditions the average OM/BC ratio was 0.23 ± 0.10 , while for the experiments at 60 km/h the ratio was 0.43 ± 0.17 . The OM/BC ratio for the Transporter (cold idle) was smaller (0.17 ± 0.03) than the OM/BC value for the Astra (0.27 ± 0.11 , cold and warm idle). No significant variations were observed for the Astra comparing cold idle with warm idle. The average smog chamber OM/BC ratios for the Astra were lower by a factor of three compared to the value of 0.82 obtained from the on-line measurements of the exhaust of the Astra with a lower dilution ratio than smog chamber experiments (Sect. 3.1).

Low OM/BC values were also measured for the Astra at the same conditions (idle and 60 km/h) at the test bench facility of the JRC (Chirico et al., 2010a). These results are consistent with the measurements of other studies as well. Bosteels et al. (2006) found that the EC content of the PM measured from two diesel passenger cars with DOC from 4 different test cycles ranged from 79 to 92%.

Measurements made at Empa (Swiss Federal Laboratories for Materials Testing and Research) during vehicle chasing experiments of a different EURO 3 diesel car equipped with a DOC showed OM/BC ratios of 0.28 at 50 km/h, 0.21 at 80 km/h, 0.3 at 100 km/h, and 0.18 at 120 km/h (S. Weimer, personal communication, 2008). These low values indicate that the primary exhaust aerosol of modern diesel vehicles consists mainly of BC with a low fraction of OM.

Using the high-resolution mass spectra and elemental analysis (Aiken et al., 2007, 2008), we determined the organic matter to organic carbon ratios (OM/OC) in our experiments (details in Sect. 3.2.3). The OM/OC values allow us to convert the OM/BC ratios to more commonly found organic carbon to black carbon (OC/BC) values. For the experiments presented here we determined OM/OC values to be: 1.26 (warm idle, As-

Results from smog chamber experiments

R. Chirico et al.

Title Page

Abstract

Introduction

Conclusions

References

Tables

Figures

◀

▶

◀

▶

Back

Close

Full Screen / Esc

Printer-friendly Version

Interactive Discussion



tra, experiment #8), 1.33 (warm idle, Astra, DOC deactivated, average), 1.28 (60 km/h, Astra, average), 1.40 (cold idle, Transporter, average). This yields an OC/BC ratio between 0.12 (cold idle, Transporter, average) and 0.33 (60 km/h, Astra, average).

3.2.2 SOA formation from diesel vehicles and methods for wall loss correction

5 Photochemical aging experiments with the Transporter exhibited substantial SOA production. In Fig. 2a the temporal evolutions of OM and BC are shown for a characteristic experiment with the Transporter (no exhaust aftertreatment devices, exp. #15). The OM and BC concentrations at time zero were $1.70 \mu\text{g}/\text{m}^3$ and $12.4 \mu\text{g}/\text{m}^3$, respectively. With lights on, photooxidation in the smog chamber produced additional OM mass, and after 3.3 h of aging the maximum non-wall loss corrected OM concentration of $10.4 \mu\text{g}/\text{m}^3$ was measured. The temporal evolutions of OM/BC ratios are shown in Fig. 2b for all experiments with the same vehicle. At time zero, the primary OM/BC ratio was 0.11–0.21 and after 5 h of aging and addition of SOA the range increased to 0.44–1.12.

15 Wall loss correction using black carbon measurements

During smog chamber experiments, particles are lost to the walls. Particulate losses were quantified by assuming that the aerosol was internally mixed, such that OM and BC have the same wall-loss rates, and BC can be used as tracer for chamber wall loss (Grieshop et al., 2008). Previous studies have shown that filter based absorption measurements used to infer BC mass concentration can be biased to higher values due to an increasing mass absorption efficiency (MAE) with an increasing layer of scattering organic material around the absorbing core of BC (Shiraiwa et al., 2010; Schnaiter et al., 2005). The use of a constant MAE when realistically it is likely increasing due to SOA addition will result in an underestimation of wall-loss corrected SOA (SOA_{WLC}) if using MAAP or Aethalometer inferred BC as a wall loss tracer. The uncertainty of this effect will be discussed later in more detail. The concentration of OM corrected for wall

Results from smog chamber experiments

R. Chirico et al.

Title Page

Abstract

Introduction

Conclusions

References

Tables

Figures

◀

▶

◀

▶

Back

Close

Full Screen / Esc

Printer-friendly Version

Interactive Discussion



losses (OM_{WLC}^{BC}) was estimated in the following way:

$$OM_{WLC}^{BC} = OM_{Meas}(t) \times [BC(t_0)/BC(t)], \quad (2)$$

where $BC(t_0)$ and $BC(t)$ are the BC concentrations measured in the smog chamber before lights were turned on and measured at time t , respectively, and $OM_{Meas}(t)$ is the organic aerosol mass measured at time t . The wall-loss corrected POA_{WLC}^{BC} can be similarly calculated using Eq. (2), by substituting OM by POA. The wall-loss corrected concentrations of organic aerosol for the experiments with the Transporter are shown in Fig. 3a. The initial OM_{WLC}^{BC} concentration, corresponding to POA_{WLC}^{BC} , was 1.76–3.35 $\mu\text{g}/\text{m}^3$ with an average value of $2.6 \pm 0.6 \mu\text{g}/\text{m}^3$. At time zero, the lights were turned on and photochemical reactions initiated the production of SOA. In experiments 13–17 with the Transporter, after approximately 3.5 h a plateau of OM_{WLC}^{BC} was reached and ranged between 6.70 and 15.0 $\mu\text{g}/\text{m}^3$ with an average value of $10.7 \pm 3.2 \mu\text{g}/\text{m}^3$.

Figure 3b shows the same experiment of Fig. 2a after the wall-loss correction has been applied. Here we assume that the MAE is not altered significantly by the addition of SOA and that the POA/BC ratio is constant over the course of the experiment. The latter assumption will be discussed in more detail in Sect. 3.2.2.4. SOA is calculated from the subtraction of POA_{WLC}^{BC} from the total OM_{WLC}^{BC} , and is shown in pink. The percent contribution of SOA to the total organic mass can be estimated for each point in time by:

$$\%SOA(t) = [1 - (POA_{WLC}^{BC}(t)/OM_{WLC}^{BC}(t))] \times 100\%. \quad (3)$$

For the experiment in Fig. 3b, SOA is 86% of the total OM after 5 h of photooxidation.

SOA calculation from m/z 57 and $C_4H_9^+$

Previous studies have estimated the SOA formation during smog chamber experiments with a diesel power generator by subtracting the initial OM mass (POA) from the total

Results from smog chamber experiments

R. Chirico et al.

[Title Page](#)[Abstract](#)[Introduction](#)[Conclusions](#)[References](#)[Tables](#)[Figures](#)[◀](#)[▶](#)[◀](#)[▶](#)[Back](#)[Close](#)[Full Screen / Esc](#)[Printer-friendly Version](#)[Interactive Discussion](#)

OM at time t in the following way (Sage et al., 2008):

$$\text{SOA}(t) = \text{OM}(t) - [(\text{Org57}(t)/\text{Org57}(t_0)) \times \text{OM}(t_0)], \quad (4)$$

where $\text{OM}(t)$ is the measured total OM concentration at time t , $\text{Org57}(t)$ is the organic mass signal at m/z 57 at time t and $\text{Org57}(t_0)$ is the organic mass signal at m/z 57 at time zero and $\text{OM}(t_0)$ is the OM concentration at time zero, before lights on.

In general, m/z 57 is associated predominantly with primary species and typically comes from long chain alkyl groups (C_4H_9^+), which are an important functionality in diesel exhaust, and it is one of the dominant ions in the EI mass spectra of organic aerosols from diesel engines (Schauer et al., 1999; Canagaratna et al., 2004; Schneider et al., 2006; Weitkamp et al., 2007). The use of m/z 57 in Eq. (4) assumes that it is predominantly from primary species (in the form of C_4H_9^+) and the ratio of m/z 57 to POA stays constant during aging. However, oxygen containing ions, such as $\text{C}_3\text{H}_5\text{O}^+$ also can contribute significant mass to the signal m/z 57 (DeCarlo et al., 2006). The high resolution data for the experiments presented here show that this is indeed the case. Figure 4 presents the temporal contributions of C_4H_9^+ to the total m/z 57 signal. At the beginning of the experiments, C_4H_9^+ was the major fraction of the signal at m/z 57 (from 77% for the Transporter to 94% for the Astra with deactivated DOC). After irradiation began, the relative fraction of the $\text{C}_3\text{H}_5\text{O}^+$ fragment at m/z 57 increased with time especially for those experiments with higher SOA production.

From this observation, it is clear that the use of Eq. (4) will overestimate the POA concentrations (by assigning all m/z 57 to primary species) and consequently underestimate the SOA production of these experiments. This is particularly true for the experiments with no or poorly functioning aftertreatment devices. For the Transporter (gray trace) and the Astra with deactivated DOC (blue trace) after 5 h of aging the contribution of $\text{C}_3\text{H}_5\text{O}^+$ to m/z 57 was around 60% and 41%, respectively. For the Astra experiments at 60 km/h (red trace) and the warm idle conditions with activated DOC (orange trace) the contribution was around 20%.

Results from smog chamber experiments

R. Chirico et al.

Title Page

Abstract

Introduction

Conclusions

References

Tables

Figures

◀

▶

◀

▶

Back

Close

Full Screen / Esc

Printer-friendly Version

Interactive Discussion



A more appropriate way to calculate the SOA formation is done by substituting m/z 57 in Eq. (4) with non-oxygenated fragment $C_4H_9^+$ at m/z 57:

$$SOA(t) = OM(t) - [(C_4H_9^+(t)/C_4H_9^+(t_0)) \times OM(t_0)]. \quad (5)$$

Comparison of the methods for estimating SOA

The relative contribution of SOA to the evolving organic mass estimated with Eq. (2) (BC WLC correction) is reported in Fig. 5 for all experiments. For the Transporter and the Astra with deactivated DOC the percentage of SOA estimated was similar and after 5 h of aging it was 77% and 73%, respectively, while for the Astra with activated DOC the SOA estimated was only 11% (warm idle) and 18% (cold idle). This is an indication that the DOC efficiently oxidized a significant amount of gaseous organic species in the diesel exhaust, which would otherwise have contributed to the SOA formation.

Experiments at 60 km/h with the Astra yielded 23% SOA after 5 h, higher than the contribution of SOA during the warm and cold idle experiments with activated DOC. Measurements of the exhaust temperature at the tailpipe of the Astra, during the filling period, reached a maximum ~ 80 – 90°C during idle experiments and a maximum of 210°C for the 60 km/h experiments. This means that the temperature to efficiently remove organics ($\sim 200^\circ\text{C}$) in the DOC (Katare et al., 2007) was likely only reached during the 60 km/h experiments. Thus, the higher SOA production at 60 km/h compared to the experiments at idle mode could potentially be explained by a relatively higher emission of unburned or partially burned fuel, due to the higher fuel consumption at 60 km/h, even if the DOC had a better conversion efficiency.

The %SOA estimation with the other two methods ($C_4H_9^+$ and Org57 methods) are reported in Fig. 5 for two types of experiments that are at the extremes and should bracket the results for all other experiments: one experiment where SOA production was high (warm idle, DOC deactivated) and one experiment where little SOA was produced (60 km/h, DOC activated). At high SOA production, the average SOA estimation using $C_4H_9^+$ (Eq. 5) after 5 h was 72% of the total OM which is similar to the average

Results from smog chamber experiments

R. Chirico et al.

[Title Page](#)[Abstract](#)[Introduction](#)[Conclusions](#)[References](#)[Tables](#)[Figures](#)[◀](#)[▶](#)[◀](#)[▶](#)[Back](#)[Close](#)[Full Screen / Esc](#)[Printer-friendly Version](#)[Interactive Discussion](#)

SOA value obtained for the same experiments with the BC method (77%). On the other hand, for the 60 km/h experiments the discrepancy between the two methods (BC and $C_4H_9^+$) is more pronounced, 23% versus 43%. Using Org57 (Eq. 4) the average SOA estimated after 5 h was significantly lower than the other 2 methods at 61% (idle) and in between the other methods for the 60 km/h at 35%. Using the Org57 and $C_4H_9^+$ methods for the 60 km/h experiments, the SOA was overestimated by 52% and 87%, respectively.

Ion enhancement ratios (IER)

Ion enhancement ratios (IER) of selected ions from the POA mass spectrum were calculated to assess whether the chemical composition of POA changed with aging time. The method used is similar to the organic enhancement ratios given in Grieshop et al. (2008), but applied to individual ions rather than the bulk OA and is defined as:

$$IER = [\text{Ion}(t)/\text{Ion}(t_0)][\text{BC}(t)/\text{BC}(t_0)], \quad (6)$$

where $\text{Ion}(t)$ and $\text{Ion}(t_0)$ are the ion signals at time t and at the time when the lights were turned on (t_0), respectively.

The temporal evolutions of IERs for all the experiments with the Transporter are shown in Fig. 6 (calculated using the BC WLC correction method), while in Fig. S.4 the temporal evolution of IERs for two characteristic experiments with the Astra (#3, idle, deactivated DOC; #7, 60 km/h) are reported. The different ions from the alkyl fragment series ($C_nH_{2n+1}^+$) had markedly different behaviors for experiments with high and low SOA production. The IER of $C_3H_7^+$ increased to a maximum of ~ 4 for the experiment with higher SOA production (#15), the IER of $C_4H_9^+$ increased to a maximum of ~ 2 for three experiments (#14, 15, and 17), the IER of $C_5H_{11}^+$ was ~ 1.4 (#14, 15, and 17), while the IER of $C_6H_{13}^+$ was almost stable around unity.

For two experiments the SOA formation was somewhat lower (#13 and 16). These experiments showed an IER increase only for the $C_3H_7^+$ ion (maximum ~ 1.5) and once

Results from smog chamber experiments

R. Chirico et al.

[Title Page](#)[Abstract](#)[Introduction](#)[Conclusions](#)[References](#)[Tables](#)[Figures](#)[◀](#)[▶](#)[◀](#)[▶](#)[Back](#)[Close](#)[Full Screen / Esc](#)[Printer-friendly Version](#)[Interactive Discussion](#)

SOA production ceased the ratio began to decrease with the continuing photochemistry. The $C_4H_9^+$ IERs for these two experiments were nearly flat until ~ 1.5 h since lights on and then the IER began to decrease to values lower than unity. The IERs for $C_5H_{11}^+$ and $C_6H_{13}^+$ decreased from the beginning of the experiments.

5 In all cases, the decrease of the IER always starts first for the largest ions of the alkyl series (higher n values in C_nH_{2n+1}) and with smaller ions in the alkyl series following sequentially with as carbon number decreases.

Thus, the use of a particular ion as a tracer for POA and subsequent spectral subtraction (Robinson et al., 2007; Sage et al., 2008) can lead to different results depending on the particular IER behavior. On one hand, if the ion has an increasing IER (e.g. $C_4H_9^+$ in experiments #14, 15, and 17), then the use of this ion for normalization will overestimate the POA during the experiment. In spectral subtraction exercises ($MS_{SOA} = MS_{totalOA} - ionNormalizedMS_{POA}$) this will also “oversubtract” a primary component from the total mass spectrum, yielding a difference spectrum that is more oxidized than the “real” SOA mass spectra. On the other hand, if IERs decrease throughout an experiment (e.g. $C_4H_9^+$ experiments #13 and 16) then one can see that the primary OA is lost via the photochemical processes in the chamber. In this case the oxidized organic aerosol may not only include SOA but also oxidized primary species commonly called OPOA (Robinson et al., 2007; Baltensperger and Prevot, 2008; Sage et al., 2008). These observations indicate that the assumption of constant POA/BC and constant POA mass spectra do not hold true for these situations and are only rough approximations.

25 The difference in IERs for the alkyl ion series is due to the oxidative processing of the molecules of the OA. Oxidation of hydrocarbons with OH radicals creates several organic products with carbonyl and hydroxyl groups as well as shorter chains due to fragmentation (Atkinson and Arey, 2003). As photochemical aging in the smog chamber progresses, the concentration of long alkyl groups of SVOCs in the system decreases faster than the concentration of shorter alkyl chains. This is because the longer alkyl chains can, by the addition of a functional group ($-OH$ or O) still contain a shorter alkyl

Results from smog chamber experiments

R. Chirico et al.

[Title Page](#)[Abstract](#)[Introduction](#)[Conclusions](#)[References](#)[Tables](#)[Figures](#)[I◀](#)[▶I](#)[◀](#)[▶](#)[Back](#)[Close](#)[Full Screen / Esc](#)[Printer-friendly Version](#)[Interactive Discussion](#)

chain, but will have lost the longer unadulterated alkyl group. For all alkyl ion fragments the measured concentration in the AMS reflects a balance between the gain of SOA containing unoxidized alkyl chains through condensation and the loss. Loss processes can be either volatilization and subsequent reaction and/or heterogeneous chemistry.

5 With higher OA addition from photochemistry, IERs indicate that in general for the lighter ions ($C_3H_7^+$ and $C_4H_9^+$) the gain by condensation of new mass is greater than the loss by oxidation on the timescales of the chamber experiments (see Fig. S5 in supplementary material). For $C_5H_{11}^+$ and $C_6H_{13}^+$ the gain and loss processes are nearly balanced for percentages of SOA higher than $\sim 77\%$, while for values lower than 68%
10 the loss processes dominate.

As we have shown, SOA quantification with $C_4H_9^+$ can be affected in either direction from the relative rates of the gain and loss processes that take place during the experiments. However, the use of this ion for wall loss corrections is still an improvement over the use of the total signal at m/z 57.

15 Lastly, it should again be mentioned that MAE can change for BC with coating of secondary material and this will result in an underestimation of SOA if BC is used as wall loss tracer. From the coincident measurements of the SP2 and the MAAP, we can estimate the magnitude of the change in the MAE. As the BC measurement with the SP2 is not affected by an organic coating an increase in the BC_{MAAP}/BC_{SP2} ratio with
20 time would indicate that the condensation of secondary species enhances the MAE. Using a fixed MAE to calculate BC concentrations from the MAAP absorption measurement would then result in overestimated BC concentrations. After 5 h of aging the increase in the BC_{MAAP}/BC_{SP2} ratio was less than 10% (average value from experiment #13 and 14) and we consider the coating effect on the BC measurement by the MAAP
25 to be small. For this reason in the remainder of the paper we will use the BC method to correct for wall losses when primary emissions are present in the chamber.

Results from smog chamber experiments

R. Chirico et al.

Title Page

Abstract

Introduction

Conclusions

References

Tables

Figures

I◀

▶I

◀

▶

Back

Close

Full Screen / Esc

Printer-friendly Version

Interactive Discussion



First order wall loss correction for gas phase only experiments

To account for wall losses in experiments with only the gas phase of diesel exhaust (see Sect. 3.2.5) another method was required. A first order rate constant for diffusional wall losses was estimated from the organic aerosol mass decay at the end of the gas-phase only experiments, when the SOA production rate was considered negligible compared to the mass loss rate by diffusion.

The first order wall loss correction was compared to the WLC_{BC} method for standard diesel experiments (POA+SOA). The agreement between the two methods is shown in Fig. 7a where the temporal evolution of wall-loss corrected OM using BC (WLC^{BC}) and using the first order mass decay (WLC^{FO}) for 3 different experiments are reported. The methods are also compared as a scatter plot in Fig. 7b where the slopes from orthogonal distance regressions (with the intercepts forced to zero) range from 0.84–0.98.

3.2.3 Atomic ratios and OM/OC ratio from fresh and aged diesel aerosols

The high resolution data of the AMS allows for the determination of the atomic ratios of the OA (Aiken et al., 2007, 2008). Figure 8 shows the temporal evolutions of the O/C and H/C atomic ratios as well as the OM/OC ratio. For primary emissions, before the initiation of photochemistry, H/C ratios had average values of 1.83 (all the experiments with the Astra) and 1.68 (all the experiments with the Transporter) while the average O/C ratios had values of 0.097 and 0.190 for the Astra and the Transporter, respectively. Accordingly, the measured OM/OC ratios for POA were relatively low, with 1.29 and 1.40 for the experiments with the Astra and the Transporter, respectively. The initial O/C ratios measured here are relatively close to the value of 0.03 for POA sampled from a diesel truck and the values of 0.06–0.10 obtained for the HOA factor from positive matrix factorization (PMF) of ground and aircraft data in Mexico City (Aiken et al., 2008; DeCarlo et al., 2010).

Results from smog chamber experiments

R. Chirico et al.

Title Page

Abstract

Introduction

Conclusions

References

Tables

Figures

◀

▶

◀

▶

Back

Close

Full Screen / Esc

Printer-friendly Version

Interactive Discussion



After 5 h of photochemical aging the average H/C ratio decreased to 1.66 for the Astra and 1.57 for the Transporter, while the average O/C ratio increased to 0.24 (Astra) and 0.37 (Transporter). In parallel, the OM/OC values increased to 1.47 (Astra) and 1.63 (Transporter) after 5 h of aging. The O/C values of the diesel OA after 5 h of aging are in the range of values of the SV-OOA (Jimenez et al., 2009), which is consistent with SV-OOA typically being associated with fresh SOA. The higher O/C ratio in the POA from the Transporter compared to the Astra is likely due to the differences in the two engines (fuel consumption, temperature, etc). While the presence of a DOC may be thought to contribute to this difference, results from the mass spectral analysis (see next section) suggest that this is not the case here.

3.2.4 Mass spectral analysis of organic aerosols from photooxidation experiments

Primary organic aerosol mass spectral analysis

The organic fraction of diesel particles consists of a mixture of compounds from fuel and lubricating oil (some partially burned) and both show a characteristic fragmentation pattern in the mass spectrum. Engine type and load affect the relative contribution of fuel and lubrication oil to the resulting organic mass (Schneider et al., 2006). Diesel fuels contain a hydrocarbon mixture that ranges roughly from C10 to C25 with a boiling point between 280 and 360 °C, whereas lubricating oils mainly consists of hydrocarbon mixtures from C14 to C45 with boiling points between 400 and 550 °C (Kweon et al., 2003 and references therein). In the following section, we use the high-resolution mass spectra to gain more chemical information about the 4 organic classes: CH, CHO (also includes fragments with only C and O), CHN, and CHON.

Figure 9 shows the average normalized high-resolution MS of POA for the Transporter (a), for the Astra with activated DOC (b, only one experiment), for the Astra with deactivated DOC (c) and for the Astra at 60 km/h (d) where the relative contributions of the four organic classes (CH, CHO, CHN, CHON) to the total organic mass for each

Results from smog chamber experiments

R. Chirico et al.

Title Page

Abstract

Introduction

Conclusions

References

Tables

Figures

◀

▶

◀

▶

Back

Close

Full Screen / Esc

Printer-friendly Version

Interactive Discussion



mass spectrum are given.

For POA, the organic CH class is the dominant fraction in the MS for all conditions (75–94%), followed by the CHO class (5.5–23%) and with low contributions from the CHN and CHON classes (less than 1.4%), consistent with the mass spectral characteristics discussed next. POA from the Transporter has a higher contribution from the CHO class (22.8%) than the average POA from the other experiments with the Astra (6.7±1.0%, average all experiments with Astra).

The primary spectra are dominated by several organic fragment ion groups $C_nH_{2n+1}^+$ (m/z 29, 43, 57, 71, ...), or alkyl fragments, which are typical of normal and branched alkanes, the series $C_nH_{2n-1}^+$ (m/z 27, 41, 55, 69, ...), typical of cycloalkanes and alkenes, and $C_nH_{2n-3}^+$ (m/z 67, 81, 95, ...), typical of cycloalkenes (Canagaratna et al., 2004). The POA mass spectra from all experiments show the largest signal contribution from m/z 43, followed by m/z 41 and slightly lower contributions by m/z 55 and m/z 57.

Figure 9 indicates that for POA 84% and more than 93% of the signal at m/z 57 can be assigned to the fragment $C_4H_9^+$ for the Transporter (Fig. 9a) and for all types of experiments with the Astra (Fig. 9b–d). For m/z 43, 58% of the signal at m/z 43 can be assigned to $C_3H_7^+$ for the Transporter, while for the Astra more than 87% of the signal at m/z 43 can be assigned to $C_3H_7^+$ (the remainder is assigned to the oxygenated fragment $C_2H_3O^+$). m/z 44, typically associated with secondary species in AMS datasets, is also present to a small degree in the POA from the Transporter at about 4.2% of the total signal (84.8% of that signal at m/z 44 is from the CHO family; 75.5% of the signal at m/z 44 is from CO_2^+ , 9.3% from $C_2H_4O^+$ and 3.2% from $C_2H_6N^+$, 4.1% from $^{13}CC_2H_7^+$, 7.9% from CH_2NO^+). The contribution of m/z 44 to the total POA mass for all the experiments with the Astra is around 1% (72.5% of that signal at m/z 44 is from the CHO family; 70.3% of the signal at m/z 44 is from CO_2^+ , 2.2% from $C_2H_4O^+$ and 7.2% from $C_2H_6N^+$, 14.7% from $^{13}CC_2H_7^+$, 5.6% from CH_2NO^+).

A high correlation of the normalized mass spectra of the CH family was found for the warm idle experiment with activated DOC (Astra) and the warm idle experiments with deactivated DOC (Astra) for the CH family ($R=0.99$, slope=1.1), while with activated

Results from smog chamber experiments

R. Chirico et al.

Title Page

Abstract

Introduction

Conclusions

References

Tables

Figures

◀

▶

◀

▶

Back

Close

Full Screen / Esc

Printer-friendly Version

Interactive Discussion



DOC the MS was more oxidized and lower correlations were found for CHO family ($R=0.94$, slope=0.48), CHON family ($R=0.20$, slope=0.12) and CHN family ($R=0.38$, slope=0.23) all slopes forced to zero. This indicates that if there is an effect of the DOC on the primary MS of diesel exhaust it is not reflected in the CH family as much as in the other ion families. A high correlation was also found between the HR-MS from the Astra at 60 km/h and the HR-MS measured during a tunnel study in Switzerland (Chirico et al., 2010b). This MS was measured during rush hours when the average speed of the vehicles was 65 ± 10 km/h giving correlation coefficients for the different families of: $R_{CH}=0.99$, $R_{CHO}=0.79$, $R_{CHON}=0.63$, $R_{CHN}=0.53$. Note that the OA concentration in the tunnel was a factor of 10 higher than the average POA from the smog chamber experiments at 60 km/h. The similarity of the MS may indicate that while the higher concentrations of OA influence partitioning, it may not strongly affect the MS of primary OA from diesel vehicles. A comparison between the unit-mass resolution MS (UMR-MS) of POA from the Astra at 60 km/h and the UMR-MS from a diesel bus chasing experiment (Canagaratna et al., 2004) also shows a strong correlation ($R=0.98$, slope=0.92).

Mass spectral analysis of 5-h aged organic aerosols

Figure 9 shows how the relative contributions of the different ion classes have evolved in the MS of the total organic aerosol over 5 h of photooxidation (OA(5 h)). The relative contribution of the ion class CHO to the OA(5 h) grew significantly, in particular for the Transporter to 47.5% (Fig. 9a). The CHO contribution for the Astra was in the range of 26–37% (Fig. 9d,b,c). The CH class remains the dominant part of the MS for the Astra (61–72%, Fig. 9b–d) and also for the Transporter although the CHO family in this case is similar in magnitude (50.9% CH family Fig. 9a). The CHN and CHON were minor components and combined to 0.2–1.4% during all experiments.

The condensing oxidized organic molecules not only contributed to the oxidized families but also to the CH family, because they are not strongly oxidized and still contain longer non-oxidized chains (see Fig. 6).

Results from smog chamber experiments

R. Chirico et al.

Title Page

Abstract

Introduction

Conclusions

References

Tables

Figures

◀

▶

◀

▶

Back

Close

Full Screen / Esc

Printer-friendly Version

Interactive Discussion



The largest single m/z contribution to OA(5 h) was due to of m/z 43 (8.5–11.4%) with the exception of the warm idle experiment (Fig. 9b) when the signal from m/z 29 was highest (9.3%). The oxidized ion $C_2H_3O^+$ increased significantly and its contribution to the total signal at m/z 43 was: 78.6%, Fig. 9a; 43.8%, Fig. 9b; 67.9%, Fig. 9c; 44.8%, Fig. 9d.

In the MS of OA(5 h) it is also clear that the contribution from mass fragment 44 to total organics increased for all experiments due to photochemistry similar to what is observed in the atmosphere, while the contribution of mass fragment 57 decreased. The relative intensity of m/z 57 was below 5% for all experiments and the contribution of the oxidized fragment $C_3H_5O^+$ to m/z 57 increased in relation to the amount of SOA produced in the chamber. For the experiments with higher SOA production the oxidized fragment $C_3H_5O^+$ increased more strongly, as shown previously in Fig. 4. m/z 44 is associated with carboxylic acid functional groups, dominates the spectra of highly oxygenated organic particles from rural areas and the size distribution of m/z 44 for rural OA is dominated by the accumulation mode and closely resembles that of sulfate, another indicator of secondary particles (Alfarra et al., 2004). The contribution of m/z 44 to OA(5 h) was 8.5% (Fig. 9a; 84.3% of the signal at m/z 44 is from CO_2^+ , 10.7% from $C_2H_4O^+$ and 1.9% from $C_2H_6N^+$, 0.8% from $^{13}CC_2H_7^+$, 2.3% from CH_2NO^+), 5.5% (Fig. 9b; 83.6% from CO_2^+ , 4.4% from $C_2H_4O^+$ and 3.8% from $C_2H_6N^+$, 2.5% from $^{13}CC_2H_7^+$, 5.7% from CH_2NO^+), 6.3% (Fig. 9c; 85.7% from CO_2^+ , 9.0% from $C_2H_4O^+$ and 0.4% from $C_2H_6N^+$, 1.0% from $^{13}CC_2H_7^+$, 2.1% from CH_2NO^+) and 4.7% (Fig. 9d; 84.3% from CO_2^+ , 10.7% from $C_2H_4O^+$ and 1.9% from $C_2H_6N^+$, 0.8% from $^{13}CC_2H_7^+$, 2.3% from CH_2NO^+).

Other ions in the OA(5 h) that also showed a significantly enhanced contribution to the CHO class were CHO^+ (m/z 29) and CH_3O^+ (m/z 31). In all experiments the contributions of these ions to the normalized organic signal increased by at least a factor of 2. While assignment of these ions to particular functionalities is not possible, they likely arise in part from aldehydes, hydroxyl groups, and esters or ethers.

Results from smog chamber experiments

R. Chirico et al.

Title Page

Abstract

Introduction

Conclusions

References

Tables

Figures

◀

▶

◀

▶

Back

Close

Full Screen / Esc

Printer-friendly Version

Interactive Discussion



Mass spectral analysis and estimation of SOA MS

Although we have shown previously that POA is not likely to be inert during the photooxidation experiments, it is useful to determine an approximate mass spectrum of the SOA formed during the POA+SOA experiments. This high resolution mass spectrum was estimated after 5 h of aging (SOA(5h)) by calculating each ion contribution to the SOA mass spectrum using the following equation:

$$I_{\text{SOA}(5\text{h})} = [I_{\text{OA}(5\text{h})} \times (\text{BC}(t_0)/\text{BC}(5\text{h}))], \quad (7)$$

where $I_{\text{OA}(5\text{h})}$ and I_{POA} are the signal intensities of each ion after 5 h of aging and before lights on, respectively. Figure 9 shows the normalized SOA mass spectra calculated from Eq. (7). The $I_{\text{SOA}(5\text{h})}$ signals for some non-oxidized ions that contribute to the CH family were negative after 5 h of aging indicating that the loss processes for these ions, i.e., volatilization and/or heterogeneous chemistry, were higher than the gain through condensation (see Fig. S.6). The loss processes of organic molecules, with a corresponding reduction of some non-oxidized ions, were most evident for the experiments at 60 km/h and for the warm idle experiment with activated DOC because there was less SOA production. The ions with negative values belong to the CH family and contribute to m/z 29, 41, 43, 55, 56, 57, 67, 69, 71, 83, 85, 97 and 99. The other MS in Fig. S.6 obtained with Eq. (7) are from experiments where the SOA production was higher than the SOA production for the 60 km/h experiments, thus the loss processes for these ions were either slower and/or balanced by the addition of secondary organics.

For the experiments with higher SOA production the relative contribution of the CHO family to SOA(5h) was 54% and 47% for the Transporter (Fig. 9a) and the Astra (Fig. 9c), respectively, while the contribution of the CH family was 44% and 52%. The highest ion intensities in the SOA(5h) MS were at m/z 43 and 44 where the oxidized ions were responsible for most of the signal. The experiment #8 (Astra, warm idle, activated DOC) was the experiment with the lowest relative contribution of SOA (only ~10% of the total organic mass was SOA after 5 h of aging), and the MS of SOA(5h)

Results from smog chamber experiments

R. Chirico et al.

Title Page

Abstract

Introduction

Conclusions

References

Tables

Figures

◀

▶

◀

▶

Back

Close

Full Screen / Esc

Printer-friendly Version

Interactive Discussion



in Fig. 9b clearly shows that for the CH ions the loss processes, volatilization and/or heterogeneous chemistry, dominated over the gain through condensation. The total CH signal from OA(5 h) decreased by 25% compared to the signal from POA. The loss of the POA signature in ambient air after 1–2 days of transport was recently reported for measurements in Crete by Hildebrandt et al. (2010).

3.2.5 Gas-phase only photooxidation experiments

Aging experiments of diesel exhaust without the particulate phase were performed with 3 different vehicles: The Citroen (DOC and diesel particle filter, DPF), the Transporter (no DOC) and the Astra (only DOC). For the vehicles not equipped with a filter, the sample was injected into the chamber with the filtering system shown in Fig. 1 heated to 150 °C.

After introduction of the exhaust in the chamber with the heated filter system the particle number concentration measured with a Condensation Particle Counter (CPC, Model 3025A, TSI) was low ($2.5 \pm 0.5 \text{ cm}^{-3}$) indicating the high removal efficiency of the filter (exp. # 12, 18 and 19). For the experiment with the Citroen the sample bypassed the heated filter and was directly injected. For these experiments the particle number concentration measured in the chamber was $300 \pm 19 \text{ cm}^{-3}$.

The particle number concentration started to increase after ~12 min and about 50 min after lights on the particle number concentration from all gas-phase only experiments increased to a maximum of $70\,950 \pm 5900 \text{ cm}^{-3}$. The AMS started to detect particulate mass after 28 ± 4 min after lights on and the average first-order wall-loss corrected SOA produced after 5 h of aging ($\text{SOA}_{\text{WLC}}^{\text{FO}}(5 \text{ h})$) was $6.1 \pm 4.4 \mu\text{g}/\text{m}^3$. The average relative contribution of the signal at m/z 44 to the total organic signal (f_{44}) from all experiments was $8.6 \pm 1.7\%$ after 1.4 h of lights on. After 5 h of aging f_{44} was $9.7 \pm 2.2\%$. Experiment #18 in Table 1 was a longer experiment where the initial f_{44} value was $7.6 \pm 0.5\%$ and increased to $9.8 \pm 0.6\%$ after 20 h.

For the four gas phase only experiments C_4H_9^+ contributed around 40% to the signal at m/z 57 after 5 h (Fig. 10). This value is similar to the values obtained with the ex-

Results from smog chamber experiments

R. Chirico et al.

Title Page

Abstract

Introduction

Conclusions

References

Tables

Figures

◀

▶

◀

▶

Back

Close

Full Screen / Esc

Printer-friendly Version

Interactive Discussion



periments with high SOA production (Transporter, Astra with deactivated DOC, Fig. 4). This corroborates the fact that alkyl fragments also comprise a non-negligible part of the SOA mass spectrum. For the longer experiment #18 the percentage of C_4H_9 at m/z 57 decreased to 26% after 20 h of photooxidation.

Figure 11 reports the ratios H/C, O/C, and OM/OC for the gas-phase only experiments. During the first 5 h the average H/C ratio from all experiments was 1.56 ± 0.05 , the average O/C ratio was 0.374 ± 0.072 , and the average OM/OC ratio was 1.64 ± 0.10 . For the 20-h experiment the H/C ratio was 1.56 ± 0.02 during the first 5 h and 1.54 ± 0.02 after 20 h of aging, while during the same time the O/C ratio increased from 0.40 ± 0.02 to 0.49 ± 0.02 and the OM/OC ratio from 1.68 ± 0.03 to 1.80 ± 0.02 . These values are consistent with the ones of Fig. 8, where the mass spectrum is dominated by SOA.

Figure 12a shows the average high-resolution mass spectra of SOA(5 h) from the experiments with the Transporter (#18 and 19 in Table 1), when a DPF was simulated with the filtering system mounted in the sampling line. The average SOA_{WLC}^{FO} (5 h) MS shows that the CH family contributed 51.9%, to the organic mass, the CHO family 46.8%, the CHN family 0.50%, and the CHON family 0.80%. The largest signal contribution was at m/z 43 followed by 29 and 44. The signal at m/z 44 was almost completely due to the CHO family (82% of the signal at m/z 44 is from CO_2^+ , 8.7% from $C_2H_4O^+$ and 1.7% from $C_2H_6N^+$), while the contribution of the CHO family to m/z 43 was 77.9%, to m/z 29 was 57.2% and to m/z 57 was 64.1%. The scatter plot between the gas phase only SOA_{WLC}^{FO} (5 h) and the average calculated SOA 5 h from the same vehicle (Transporter) during POA+SOA experiments using Eq. (7) (experiments #13 to 17 in Table 1) is shown in Fig. 12b. It shows that the method used to obtain the SOA MS (Eq. 7) yields a similar spectrum as the SOA MS directly measured from the gas-phase only photooxidation experiments. The slopes of the orthogonal distance regressions forced to zero were 0.87 for CH, 1.2 for CHO and 1.1 for CHON and CHN. The Pearson's correlation coefficients were: 0.982 for CH, 0.991 for CHO, 0.984 for CHON and 0.998 for CHN.

Results from smog chamber experiments

R. Chirico et al.

Title Page

Abstract

Introduction

Conclusions

References

Tables

Figures

I◀

▶I

◀

▶

Back

Close

Full Screen / Esc

Printer-friendly Version

Interactive Discussion



The contributions to SOA from the long experiment (#18) were as follows: after 5 h: 45.3% from the CH family, 53.1% from the CHO family, 1.06% from the CHN family, and 0.54% from the CHON family; after 20 h: while the CH contribution to the SOA after 20 h was 39.7%, the one of CHO was 57.2% and the contribution of CHN and CHON were 2.54% and 0.56%, respectively.

3.2.6 Emission factors for POA, SOA and BC and relative contribution

The emissions factors, calculated with Eq. (1), and the relative contributions for POA, SOA and BC for all experiments are shown in Figs. 13 and 14.

POA emissions were showed less dependence on the presence of a DOC, in contrast to SOA formation. In fact, the average EF(POA) was 0.081 (g/kg fuel) and 0.147 (g/kg fuel) for the experiments with the Transporter and the Astra with deactivated DOC, respectively, while for the experiments with an activated DOC the EF(POA) was 0.143 (g/kg fuel) (warm idle) and 0.137 (g/kg fuel) (cold idle). Also the EF(POA) for the experiments at 60 km/h is similar to the values from the idle experiments. The EF(SOA) values were 0.254 (g/kg fuel) (Transporter, no DOC) and 0.461 (g/kg fuel) (Astra, deactivated DOC), while values below 0.047 (g/kg fuel) were obtained in presence of a DOC (idle and 60 km/h experiments). For the experiments at 60 km/h the emission factors of POA and SOA were comparable to those from the same vehicle with activated DOC at idle mode. In Fig. 13 it is shown that in the presence of both a DOC and a DPF the total particulate mass, the emitted primary mass plus the produced secondary mass after 5 h was drastically reduced.

In the absence of a DOC, 47–59% of the primary mass (POA+BC) plus the produced secondary mass (5 h) was made of BC, 31–40% of SOA and 10–13% of POA. With a DOC, BC still dominated the overall mass (~74–83%) while SOA was drastically reduced (~2–7%) (Fig. 14).

Results from smog chamber experiments

R. Chirico et al.

Title Page

Abstract

Introduction

Conclusions

References

Tables

Figures

◀

▶

◀

▶

Back

Close

Full Screen / Esc

Printer-friendly Version

Interactive Discussion



4 Conclusions

In this paper we present the first characterization of POA and estimates of the SOA formation from one vehicle without aftertreatment and from two vehicles with aftertreatment devices (one with only a DOC and another one with DOC and particulate filter).

In addition, we show the high mass resolution MS of POA, aged OA and SOA from diesel exhaust measured by an Aerodyne aerosol mass spectrometer. POA emission and SOA formation depend on various factors such as engine temperature and load, aftertreatment devices, dilution of exhaust and organic aerosol loading.

For the conditions explored in this paper, it could be shown that the directly emitted aerosol consists mainly of BC with a low fraction of organic matter ($OM/BC < 0.5$). When the exhaust was subjected to photochemical oxidation in a smog chamber significant SOA production occurred for the vehicles without a DOC or a deactivated DOC.

Several methods were used to quantify the SOA production; First, BC measurements were used to account for wall losses in the chamber and to estimate the SOA production, and second, the ion $C_4H_9^+$, a marker of primary diesel OA, was used. The two methods agreed well in cases with higher SOA production, but diverged for conditions with low SOA production. In general for these experiments, the use of BC as a wall loss tracer was more reliable and less affected by artifacts (e.g. the enhancement of the MAE caused by the organic coating) and was the primary method for wall loss correction.

The IER showed differing behavior for alkyl series ions and a strong dependence on the amount of SOA formed during an experiment. This also implies that the POA mass spectrum is not stable over the course of an experiment, and using individual ions to calculate SOA fractions can result in an over or underestimation of SOA depending on the behavior (increasing or decreasing) of the ion used.

The presence of a DOC had no measurable effect on the EF(POA), while it substantially reduced SOA formation.

Results from smog chamber experiments

R. Chirico et al.

Title Page

Abstract

Introduction

Conclusions

References

Tables

Figures

◀

▶

◀

▶

Back

Close

Full Screen / Esc

Printer-friendly Version

Interactive Discussion



POA MS had a similar fragmentation pattern for the different conditions and the CH family was the dominant class of ions ($92\pm 2\%$ of the total organic mass, average from all experiments with the car equipped with DOC; 75% for the experiments with the car without DOC). The MS analysis of the SOA after 5 h of aging, from gas-phase only experiments, showed a fraction of signal due to the CHO family equal to 47%, which is consistent with the more oxidized nature of the SOA compared to POA.

Elemental analysis of the OA was also calculated for the O/C and H/C atomic ratios and the OM/OC ratio. The primary OA had a low O/C ratio ($\sim 0.07\text{--}0.18$, all experiments). Photochemistry in the smog chamber then increased the O/C for the OA after 5 h of aging ($\sim 0.20\text{--}0.37$) and at the same time the H/C ratio decreased as expected. The OM/OC ratio for the primary emissions was $\sim 1.28\text{--}1.40$ (all experiments) and for the OA(5 h) it increased to $\sim 1.45\text{--}1.63$.

The SOA MS estimated with BC (Eq. 7), for the experiments with both particulate and gas phase, was highly correlated with the SOA MS from the diesel gas-phase only photooxidation experiments.

Supplementary material related to this article is available online at:

<http://www.atmos-chem-phys-discuss.net/10/16055/2010/acpd-10-16055-2010-supplement.pdf>

Acknowledgement. The authors thank Panayotis Dimopoulos, Daniel Schreiber and Silke Weimer for the information that they provided. PFD is grateful for postdoctoral research support from the US-NSF (IRFP #0701013). This work was supported by the Competence Center Energy and Mobility (CCEM) in the context of the project NEADS as well as the Swiss National Science Foundation.

References

ACEA: EU Economic Report, Downloadable at <http://www.acea.be/index.php/collection/publications>, last access: March 2009, February 2008.

16089

ACPD

10, 16055–16109, 2010

Results from smog chamber experiments

R. Chirico et al.

Title Page

Abstract

Introduction

Conclusions

References

Tables

Figures

◀

▶

◀

▶

Back

Close

Full Screen / Esc

Printer-friendly Version

Interactive Discussion



Results from smog chamber experiments

R. Chirico et al.

[Title Page](#)[Abstract](#)[Introduction](#)[Conclusions](#)[References](#)[Tables](#)[Figures](#)[◀](#)[▶](#)[◀](#)[▶](#)[Back](#)[Close](#)[Full Screen / Esc](#)[Printer-friendly Version](#)[Interactive Discussion](#)

- Aiken, A. C., DeCarlo, P. F., and Jimenez, J. L.: Elemental analysis of organic species with electron ionization high-resolution mass spectrometry, *Anal. Chem.*, 79, 8350–8358, 2007.
- Aiken, A. C., DeCarlo, P. F., Kroll, J. H., Worsnop, D. R., et al.: O/C and OM/OC ratios of primary, secondary, and ambient organic aerosols with high-resolution time-of-flight aerosol mass spectrometry, *Environ. Sci. Technol.*, 42, 4478–4485, 2008.
- Alfarra, M. R., Coe, H., Allan, J. D., Bower, K. N., et al.: Characterization of urban and rural organic particulate in the lower fraser valley using two aerodyne aerosol mass spectrometers, *Atmos. Environ.*, 38, 5745–5758, 2004.
- Allan, J. D., Delia, A. E., Coe, H., Bower, K. N., et al.: A generalised method for the extraction of chemically resolved mass spectra from aerodyne aerosol mass spectrometer data, *J. Aerosol Sci.*, 35, 909–922, 2004.
- Andersson, J., Antonsson, M., Eurenus, L., Olsson, E., et al.: Deactivation of diesel oxidation catalysts: vehicle- and synthetic aging correlations, *Appl. Catal. B-Environ.*, 72, 71–81, 2007.
- Atkinson, R. and Arey, J.: Atmospheric degradation of volatile organic compounds, *Chem. Rev.*, 103, 4605–4638, 2003.
- Baltensperger, U. and Prevot, A. S. H.: Chemical analysis of atmospheric aerosols, *Anal. Bioanal. Chem.*, 390, 277–280, 2008.
- Bosteels, D., May, J., Karlsson, H., and de Serves, C.: “Regulated” and “non-regulated” emissions from modern European passenger cars, *SAE Technical Paper Series*, 2006-01-1516, 1–9, 2006.
- Canagaratna, M. R., Jayne, J. T., Ghertner, D. A., Herndon, S., et al.: Chase studies of particulate emissions from in-use New York City vehicles, *Aerosol Sci. Tech.*, 38, 555–573, 2004.
- Chirico, R., Clairotte, M., Adam, T., Heringa, M. F., DeCarlo, P. F., Giechaskiel, B., Elsasser, M., Astorga, C., Streibel, T., Sklorz, M., Zimmermann, R., Martini, G., Baltensperger, U., and Prevot, A. S. H.: Regulated and unregulated emission characterization from different type of vehicles powered with different fuels: Results from chassis dynamometer studies, in preparation, 2010a.
- Chirico, R., DeCarlo, P. F., Heringa, M. F., Prevot A. S. H., et al.: Aerosol measurements with an high resolution time of flight aerosol mass spectrometer (hr-tof-ams) in the Gubrist road tunnel, Switzerland, in preparation, 2010b.
- Chirico, R., Heringa, M. F., DeCarlo, P. F., Adam, T., et al.: Regulated and unregulated emission characterization from different type of vehicles during chassis dynamometer studies, in

Results from smog chamber experiments

R. Chirico et al.

[Title Page](#)[Abstract](#)[Introduction](#)[Conclusions](#)[References](#)[Tables](#)[Figures](#)[◀](#)[▶](#)[◀](#)[▶](#)[Back](#)[Close](#)[Full Screen / Esc](#)[Printer-friendly Version](#)[Interactive Discussion](#)

- preparation, 2010b.
- Cocker, D. R. I., Mader, B. T., Kalberer, M., Flagan, R. C., et al.: The effect of water on gas-particle partitioning of secondary organic aerosol: II. m-xylene and 1,3,5-trimethylbenzene photooxidation systems, *Atmos. Environ.*, 35, 6073–6085, 2001.
- 5 DeCarlo, P. F., Ulbrich, I. M., Crounse, J., de Foy, B., Dunlea, E. J., Aiken, A. C., Knapp, D., Weinheimer, A. J., Campos, T., Wennberg, P. O., and Jimenez, J. L.: Investigation of the sources and processing of organic aerosol over the Central Mexican Plateau from aircraft measurements during MILAGRO, *Atmos. Chem. Phys.*, 10, 5257–5280, doi:10.5194/acp-10-5257-2010, 2010.
- 10 DeCarlo, P. F., Kimmel, J. R., Trimborn, A., Northway, M. J., et al.: Field-deployable, high-resolution, time-of-flight aerosol mass spectrometer, *Anal. Chem.*, 78, 8281–8289, 2006.
- DeCarlo, P., Slowik, J., Worsnop, D., Davidovits, P., et al.: Particle morphology and density characterization by combined mobility and aerodynamic diameter measurements, Part 1: theory, *Aerosol Sci. Tech.*, 38, 1185–1205, 2004.
- 15 Fino, D.: Diesel emission control: catalytic filters for particulate removal, *Sci. Technol. Adv. Mat.*, 8, 93–100, 2007.
- Grieshop, A. P., Logue, J. M., Donahue, N. M., and Robinson, A. L.: Laboratory investigation of photochemical oxidation of organic aerosol from wood fires 1: measurement and simulation of organic aerosol evolution, *Atmos. Chem. Phys.*, 9, 1263–1277, doi:10.5194/acp-9-1263-2009, 2009.
- 20 Hildebrandt, L., Engelhart, G. J., Mohr, C., Kostenidou, E., Lanz, V. A., Bougiatioti, A., DeCarlo, P. F., Prevot, A. S. H., Baltensperger, U., Mihalopoulos, N., Donahue, N. M., and Pandis, S. N.: Aged organic aerosol in the Eastern Mediterranean: the Finokalia Aerosol Measurement Experiment – 2008, *Atmos. Chem. Phys.*, 10, 4167–4186, doi:10.5194/acp-10-4167-2010, 2010.
- 25 Jimenez, J. L., Canagaratna, M. R., Donahue, N. M., Prevot, A. S. H., et al.: Evolution of organic aerosols in the atmosphere, *Science*, 326, 1525–1529, doi:10.1126/science.1180353, 2009.
- Katare, S. R., Patterson, J. E., and Laing, P. M.: Diesel aftertreatment modeling: a systems approach to NO_x control, *Ind. Eng. Chem. Res.*, 46, 2445–2454, doi:10.1021/ie0612515, 2007.
- 30 Kittelson, D. B.: Engines and nanoparticles: a review, *J. Aerosol Sci.*, 29, 575–588, 1998.
- Kozak, M. and Jerzy, M.: The mechanics of fuel sulphur influence on exhaust emissions from diesel engines, *TEKA Kom. Energ. Roln.*, 96–106, 2005.

Results from smog chamber experiments

R. Chirico et al.

[Title Page](#)[Abstract](#)[Introduction](#)[Conclusions](#)[References](#)[Tables](#)[Figures](#)[◀](#)[▶](#)[◀](#)[▶](#)[Back](#)[Close](#)[Full Screen / Esc](#)[Printer-friendly Version](#)[Interactive Discussion](#)

- Kweon, C. B., Okada, S., Foster, D. E., Bae, M. S., et al.: Effect of engine operating conditions on particle-phase organic compounds in engine exhaust of a heavy-duty, direct-injection (D.I.) diesel engine, SAE Technical Paper Series, 2003-01-0342, 73–89, 2003.
- Lanz, V. A., Alfarra, M. R., Baltensperger, U., Buchmann, B., Hueglin, C., and Prévôt, A. S. H.: Source apportionment of submicron organic aerosols at an urban site by factor analytical modelling of aerosol mass spectra, *Atmos. Chem. Phys.*, 7, 1503–1522, doi:10.5194/acp-7-1503-2007, 2007.
- Leskinen, A. P., Jokiniemi, J. K., and Lehtinen, K. E. J.: Transformation of diesel engine exhaust in an environmental chamber, *Atmos. Environ.*, 41, 8865–8873, 2007.
- Lipsky, E. M. and Robinson, A. L.: Effects of dilution on fine particle mass and partitioning of semivolatile organics in diesel exhaust and wood smoke, *Environ. Sci. Technol.*, 40, 155–162, 2006.
- Liu, P. S. K., Deng, R., Smith, K. A., Williams, L. R., et al.: Transmission efficiency of an aerodynamic focusing lens system: comparison of model calculations and laboratory measurements for the aerodyne aerosol mass spectrometer, *Aerosol Sci. Tech.*, 41, 721–733, 2007.
- Matthew, B. M., Middlebrook, A. M., and Onasch, T. B.: Collection efficiencies in an aerodyne aerosol mass spectrometer as a function of particle phase for laboratory generated aerosols, *Aerosol Sci. Tech.*, 42, 884–898, 2008.
- Moteki, N. and Kondo, Y.: Effects of mixing state on black carbon measurements by laser-induced incandescence, *Aerosol Sci. Tech.*, 41, 398–417, 2007.
- Odum, J. R., Hoffmann, T., Bowman, F., Collins, D., et al.: Gas/particle partitioning and secondary organic aerosol yields, *Environ. Sci. Technol.*, 30, 2580–2585, doi:10.1021/es950943+, 1996.
- Pankow, J. F.: An absorption model of the gas/aerosol partitioning involved in the formation of secondary organic aerosol, *Atmos. Environ.*, 28, 189–193, 1994a.
- Pankow, J. F.: An absorption model of gas/particle partitioning of organic compounds in the atmosphere, *Atmos. Environ.*, 28, 185–188, 1994b.
- Paulsen, D., Dommen, J., Kalberer, M., Prevot, A. S. H., et al.: Secondary organic aerosol formation by irradiation of 1,3,5-Trimethylbenzene-NO_x-H₂O in a new reaction chamber for atmospheric chemistry and physics, *Environ. Sci. Technol.*, 39, 2668–2678, 2005.
- Phuleria, H. C., Geller, M. D., Fine, P. M., and Sioutas, C.: Size-resolved emissions of organic tracers from light- and heavy-duty vehicles measured in a California roadway tunnel, *Environ.*

Results from smog chamber experiments

R. Chirico et al.

[Title Page](#)[Abstract](#)[Introduction](#)[Conclusions](#)[References](#)[Tables](#)[Figures](#)[◀](#)[▶](#)[◀](#)[▶](#)[Back](#)[Close](#)[Full Screen / Esc](#)[Printer-friendly Version](#)[Interactive Discussion](#)

- Sci. Technol., 40, 4109–4118, 2006.
- Pope, C. A. and Dockery, D. W.: Health effects of fine particulate air pollution: lines that connect, in: 99th Annual Meeting of the Air-and-Waste-Management-Association, New Orleans, LA, ISI:000238176000002, 709–742, 2006.
- 5 Robinson, A. L., Donahue, N. M., Shrivastava, M. K., Weitkamp, E. A., et al.: Rethinking organic aerosols: semivolatile emissions and photochemical aging, *Science*, 315, 1259–1262, doi:10.1126/science.1133061, 2007.
- Sage, A. M., Weitkamp, E. A., Robinson, A. L., and Donahue, N. M.: Evolving mass spectra of the oxidized component of organic aerosol: results from aerosol mass spectrometer analyses of aged diesel emissions, *Atmos. Chem. Phys.*, 8, 1139–1152, doi:10.5194/acp-8-1139-2008, 2008
- 10 Schauer, J. J., Kleeman, M. J., Cass, G. R., and Simoneit, B. R. T.: Measurement of emissions from air pollution sources, 2. C1 through C30 organic compounds from medium duty diesel trucks, *Environ. Sci. Technol.*, 33, 1578–1587, 1999.
- 15 Schnaiter, M., Linke, C., Möhler, O., Naumann, K.-H., et al.: Absorption amplification of black carbon internally mixed with secondary organic aerosol, *J. Geophys. Res.*, 110, D19204, doi:10.1029/2005JD006046, 2005.
- Schneider, J., Weimer, S., Drewnick, F., Borrmann, S., et al.: Mass spectrometric analysis and aerodynamic properties of various types of combustion-related aerosol particles, *Int. J. Mass Spectrom.*, 258, 37–49, 2006.
- 20 Sharma, M., Agarwal, A. K., and Bharathi, K. V. L.: Characterization of exhaust particulates from diesel engine, *Atmos. Environ.*, 39, 3023–3028, 2005.
- Shiraiwa, M., Kondo, Y., Iwamoto, T., and Kita, K.: Amplification of light absorption of black carbon by organic coating, *Aerosol Sci. Tech.*, 44, 46–54, 2010.
- 25 Slowik, J., Stainken, K., Davidovits, P., Williams, L., et al.: Particle morphology and density characterization by combined mobility and aerodynamic diameter measurements, Part 2: application to combustion-generated soot aerosols as a function of fuel equivalence ratio, *Aerosol Sci. Tech.*, 38, 1206–1222, 2004.
- Slowik, J. G., Cross E. S., Han J.-H., Davidovits P., et al.: An inter-comparison of instruments measuring black carbon content of soot particles, *Aerosol Sci. Tech.*, 41, 295–314, 2007.
- 30 Song, C., Na, K., Warren, B., Malloy, Q., et al.: Impact of propene on secondary organic aerosol formation from m-xylene, *Environ. Sci. Technol.*, 41, 6990–6995, 2007.
- Steinbacher, M., Zellweger, C., Schwarzenbach, B., Bugmann, S., Buchmann, S., Ordóñez, C.,

Results from smog chamber experiments

R. Chirico et al.

[Title Page](#)[Abstract](#)[Introduction](#)[Conclusions](#)[References](#)[Tables](#)[Figures](#)[◀](#)[▶](#)[◀](#)[▶](#)[Back](#)[Close](#)[Full Screen / Esc](#)[Printer-friendly Version](#)[Interactive Discussion](#)

Prevot, A. S. H., and Hueglin, C.: Nitrogen oxidides measurements at rural sites in Switzerland: bias of conventional measurement techniques, *J. Geophys. Res.*, 112, D11307, doi:10.1029/2006JD007971, 2007.

Stephens, M., Turner N., and Sandberg, J.: Particle identification by laser-induced incandescence in a solid-state laser cavity, *Appl. Optics*, 42, 3726–3736, 2003.

Tang, S., Frank, B. P., Lanni, T., Rideout, G., et al.: Unregulated emissions from a heavy-duty diesel engine with various fuels and emission control systems, *Environ. Sci. Technol.*, 41, 5037–5043, 2007.

US EPA: Health assessment document for diesel engine exhaust center for environmental assessment, Office of Research and Development, US Environmental Protection Agency, Washington DC, 2002.

Volkamer, R., Jimenez, J. L., San Martini, F., Dzepina, K., et al.: Secondary organic aerosol formation from anthropogenic air pollution: rapid and higher than expected, *Geophys. Res. Lett.*, 33, L17811, doi:10.1029/2006GL026899, 2006.

Walker, A. P.: Controlling particulate emissions from diesel vehicles, *Top. Catal.*, 28, 165–170, 2004.

Weingartner, E., Saathoff, H., Schnaiter, M., Streit, N., et al.: Absorption of light by soot particles: determination of the absorption coefficient by means of aethalometers, *J. Aerosol Sci.*, 34, 1445–1463, 2003.

Weitkamp, E. A., Sage, A. M., Pierce, J. R., Donahue, N. M., et al.: Organic aerosol formation from photochemical oxidation of diesel exhaust in a smog chamber, *Environ. Sci. Technol.*, 41, 6969–6975, 2007.

Winkler, A., Ferri, D., and Hauert, R.: Influence of aging effects on the conversion efficiency of automotive exhaust gas catalysts, *Catal. Today*, in press, 2010.

Zhang, Q., Worsnop, D. R., Canagaratna, M. R., and Jimenez, J. L.: Hydrocarbon-like and oxygenated organic aerosols in Pittsburgh: insights into sources and processes of organic aerosols, *Atmos. Chem. Phys.*, 5, 3289–3311, doi:10.5194/acp-5-3289-2005, 2005.

Results from smog chamber experiments

R. Chirico et al.

Title Page

Abstract Introduction

Conclusions References

Tables Figures

◀ ▶

◀ ▶

Back Close

Full Screen / Esc

Printer-friendly Version

Interactive Discussion

Table 1. Experiments, operating conditions of the cars during the injection of exhaust into the chamber and temperatures of the sampling line. Initial conditions in the smog chamber before filling (RH and T) and after filling with lights off and without injection of ozone and propene (dilution ratio, NO, NO_x, BC(t_0), POA_{WLC}^{BC}). Organic aerosol concentrations after 5 h of aging corrected for wall losses (OM_{WLC}^{BC}(5 h) or SOA_{WLC}^{FO}(5 h)).

exp. #	Type of exp.	Ambient temp. during filling (°C)	Engine cooling water temp. (°C)	Max. Exhaust temp. during filling (°C)	RPM	Gear	Fuel consumption	Sampling line temp. (°C)	Dilution ratio	NO (ppb)	NO _x (ppb)	RH (%)	T (°C)	BC (t_0)	POA _{WLC} ^{BC}	OM _{WLC} ^{BC} (5h) or SOA _{WLC} ^{FO} (5h)
DOC deactivated – no particulate filter (Astra)																
1	Warm idle	9.4	90±2	–	800	–	0.5 (L/h)	150	569	420	470	50	19.3	11.9	2.91	17.2
2	Warm idle	7.7	90±2	–	800	–	0.5 (L/h)	150	314	600	670	55	19.5	17.6	7.74	30.2
3	Warm idle	7	90±2	83	800	–	0.5 (L/h)	150	412	451	480	58	19.9	17.9	2.19	5.72
DOC activated – no particulate filter (Astra)																
4	60 km/h	9.6	90±2	203	1600	4	4 (L/100 km)	150	1213	284	486	75	19.7	22.3	9.87	11.2
5	60 km/h	10.1	90±2	210	1600	4	4 (L/100 km)	150	841	220	330	64	18.9	26.2	9.45	12.7
6	60 km/h	8.2	90±2	206	1600	4	4 (L/100 km)	150	509	286	310	55	18.7	33.0	5.48	8.39
7	60 km/h	-3.5	90±2	–	1600	4	4 (L/100 km)	150	326	427	455	64	19.0	45.1	8.89	13.0
DOC activated – no particulate filter (Astra)																
8	Warm idle	27.6	90±2	95	800	–	0.5 (L/h)	150	–	670	673	56	17.9	18.5	3.46	3.91
9	Cold idle	24.6	–	81	800	–	1.2–0.5 (L/h)	150	109	720	804	59	18.4	22.3	3.76	4.82
10	Cold idle	18.4	–	84.9	800	–	1.2–0.5 (L/h)	80	85	633	750	59	19.3	25.3	11.3	12.6
11	Cold idle	18.8	–	77.9	800	–	1.2–0.5 (L/h)	150	119	830	918	51	19.1	22.2	5.40	7.34
DOC activated – simulation particulate filter with fiber filter (Astra)																
12	Cold idle	18.3	–	80.4	800	–	1.2–0.5 (L/h)	225	250	59	19.0				4.00*	3.96
No aftertreatments (Transporter)																
13	Cold idle	12.9	–	48.4	800	–	–	150	67	456	474	62	18.9	17.6	2.61	8.34
14	Cold idle	18.1	–	53.6	800	–	–	80	71	422	480	60	18.2	18.8	3.35	13.9
15	Cold idle	14.8	–	39.9	800	–	–	150	92	346	428	54	19.4	13.5	2.06	15.0
16	Cold idle	12.0	–	–	800	–	–	80	94	392	400	45	19.0	14.6	3.16	6.70
17	Cold idle	10.4	–	39.2	800	–	–	150	58	361	438	56	18.8	13.6	1.76	9.42
No DOC – simulation particulate filter with fiber filter (Transporter)																
18	Cold idle	10.8	–	46.2	800	–	–	150	875	145	153	59	18.8			5.41*
19	Cold idle	8.2	–	50.5	800	–	–	150	–	123	142	55	18.9			13.2*
DOC and particulate filter (Citroen)																
20	Cold idle	2.7	–	51.4	800	–	14.3–19.2 L/100 km/h	150	67	569	599	52	19.7			1.62*

Cold idle=injection of the exhaust from engine cold start plus idle mode

Warm idle=injection of the exhaust from warm engine at idle mode

RPM=revolutions per minute

DOC=diesel oxidation catalyst

*SOA_{WLC}^{FO}(5 h)=SOA estimated with a first order rate constant from organic aerosol mass decay



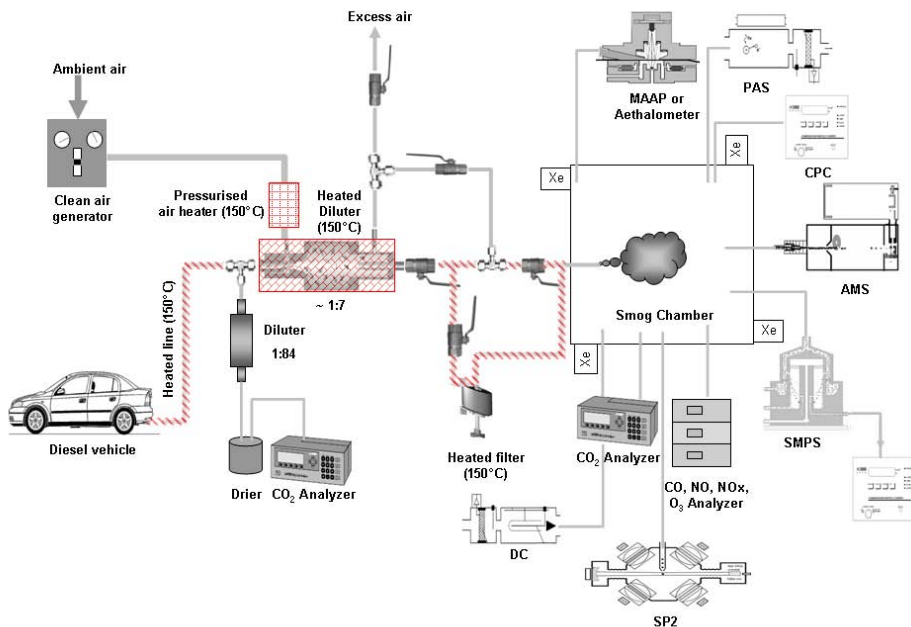


Fig. 1. Schematic representation of the sampling line, the smog chamber and the measurement setup of the smog chamber.

Results from smog chamber experiments

R. Chirico et al.

Title Page	
Abstract	Introduction
Conclusions	References
Tables	Figures
◀	▶
◀	▶
Back	Close
Full Screen / Esc	
Printer-friendly Version	
Interactive Discussion	



Results from smog chamber experiments

R. Chirico et al.

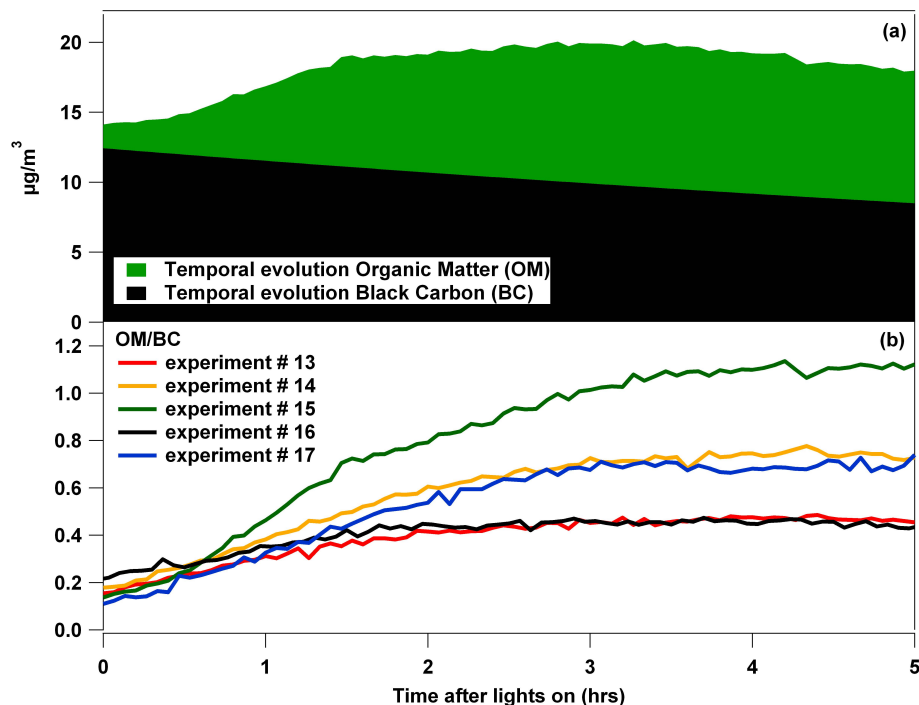


Fig. 2. Temporal evolution of the organic matter (OM) and black carbon (BC) from a characteristic smog chamber experiment with substantial SOA production (exp. #15, a) and temporal evolution of OM/BC ratios from experiments with the diesel vehicles without aftertreatments (b).

[Title Page](#)[Abstract](#)[Introduction](#)[Conclusions](#)[References](#)[Tables](#)[Figures](#)[◀](#)[▶](#)[◀](#)[▶](#)[Back](#)[Close](#)[Full Screen / Esc](#)[Printer-friendly Version](#)[Interactive Discussion](#)

Results from smog chamber experiments

R. Chirico et al.

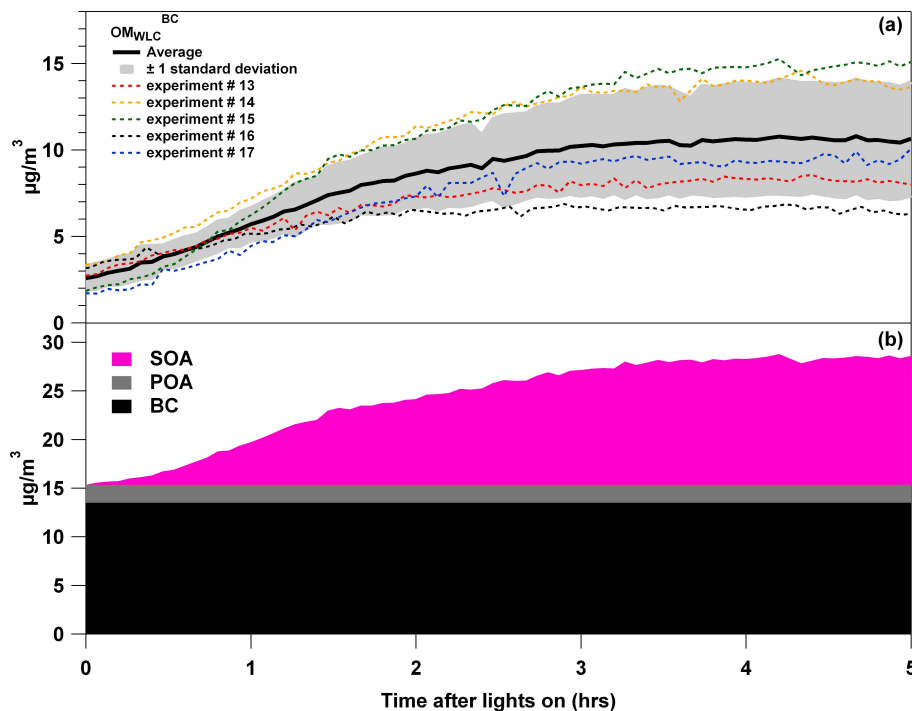


Fig. 3. Temporal evolution of the wall-loss corrected organic aerosol mass concentration (OM_{WLC}^{BC}) for the diesel vehicle without aftertreatments **(a)** and temporal evolution of OM_{WLC}^{BC} for the same experiment in Fig. 2a **(b)**: total organics is the sum of the pink and gray areas with the gray area equal to POA, assuming a constant POA to BC ratio for the full experiment. The pink area is the estimated SOA from subtracting the POA from the total OA.

Title Page

Abstract

Introduction

Conclusions

References

Tables

Figures

I◀

▶I

◀

▶

Back

Close

Full Screen / Esc

Printer-friendly Version

Interactive Discussion



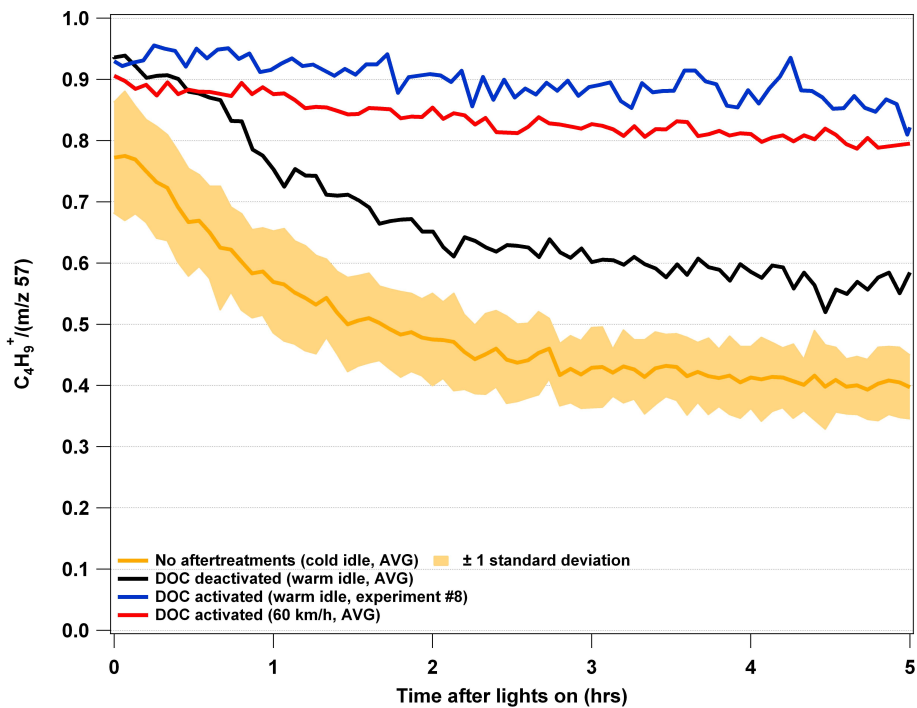


Fig. 4. Temporal evolution of the fraction of $C_4H_9^+$ to total m/z 57. The orange and blue lines are average values.

Results from smog chamber experiments

R. Chirico et al.

Title Page

Abstract Introduction

Conclusions References

Tables Figures

◀ ▶

◀ ▶

Back Close

Full Screen / Esc

Printer-friendly Version

Interactive Discussion



Results from smog chamber experiments

R. Chirico et al.

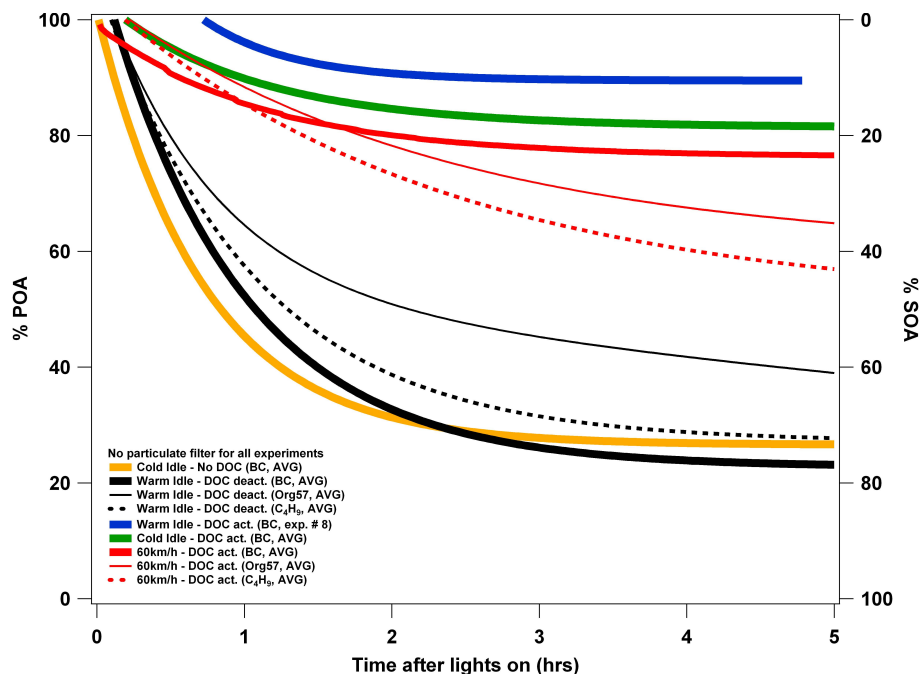


Fig. 5. Average POA and SOA contribution to total organic mass estimated using the black carbon assumption for wall loss correction (Eq. 2, thick solid lines), the C_4H_9 normalization method (Eq. 5, thin solid lines) and the Org57 normalization method (Eq. 4, dashed lines).

Title Page

Abstract

Introduction

Conclusions

References

Tables

Figures

◀

▶

◀

▶

Back

Close

Full Screen / Esc

Printer-friendly Version

Interactive Discussion



Results from smog chamber experiments

R. Chirico et al.

Title Page

Abstract

Introduction

Conclusions

References

Tables

Figures

◀

▶

◀

▶

Back

Close

Full Screen / Esc

Printer-friendly Version

Interactive Discussion

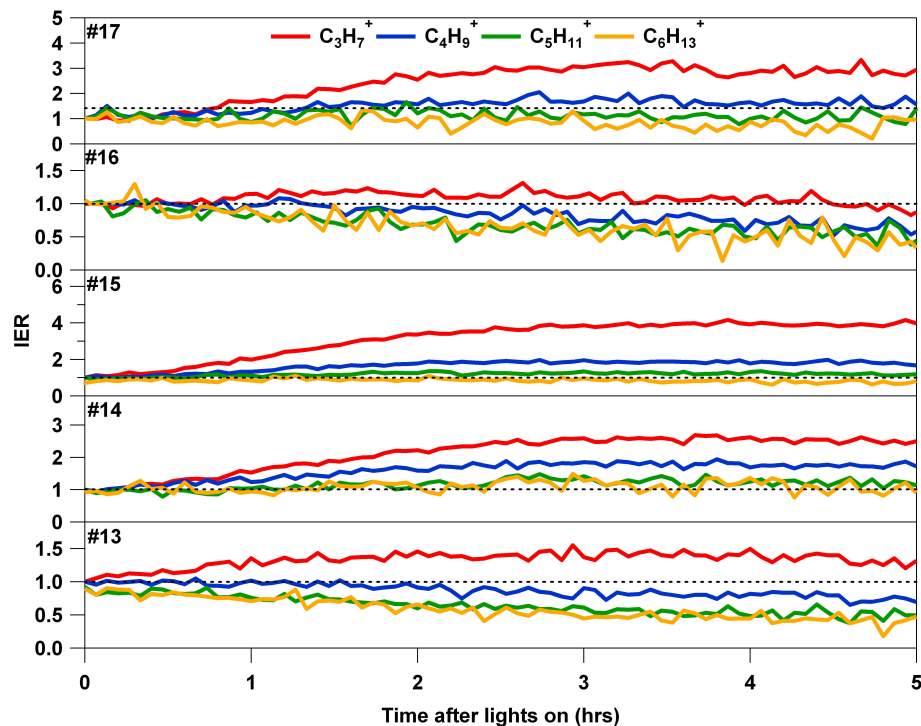


Fig. 6. Temporal evolution of the ion enhancement ratios of selected markers of primary organic aerosols.

Results from smog chamber experiments

R. Chirico et al.

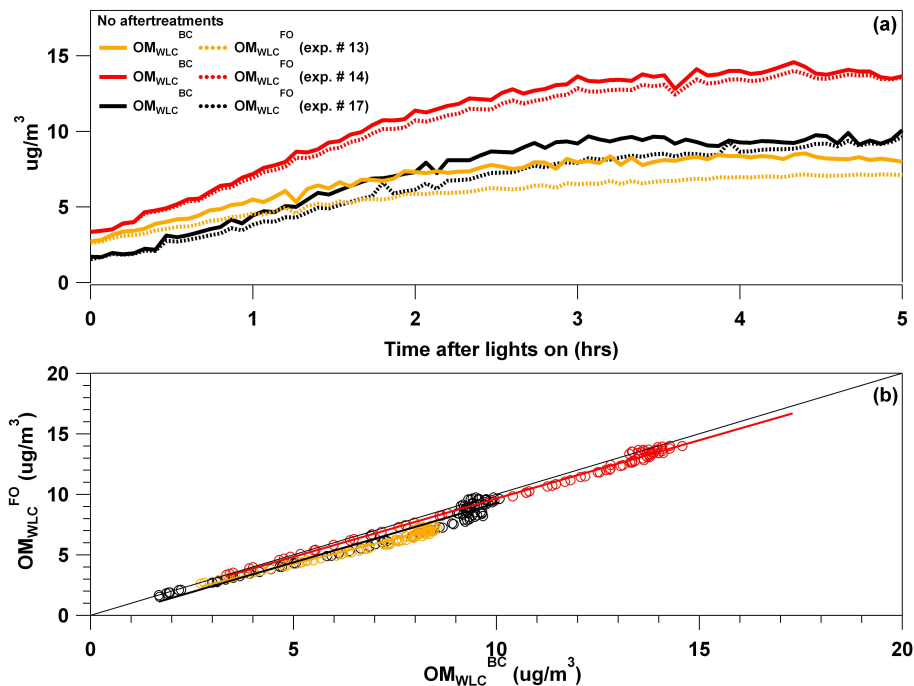


Fig. 7. Temporal evolution of the wall-loss corrected OM with BC (OM_{WLC}^{BC}) and with the first order rate constant from the OM decay before lights on (OM_{WLC}^{FO}) (a) and scatter plot with orthogonal regressions (b).



Title Page

Abstract Introduction

Conclusions References

Tables Figures

◀ ▶

◀ ▶

Back Close

Full Screen / Esc

Printer-friendly Version

Interactive Discussion

Results from smog chamber experiments

R. Chirico et al.

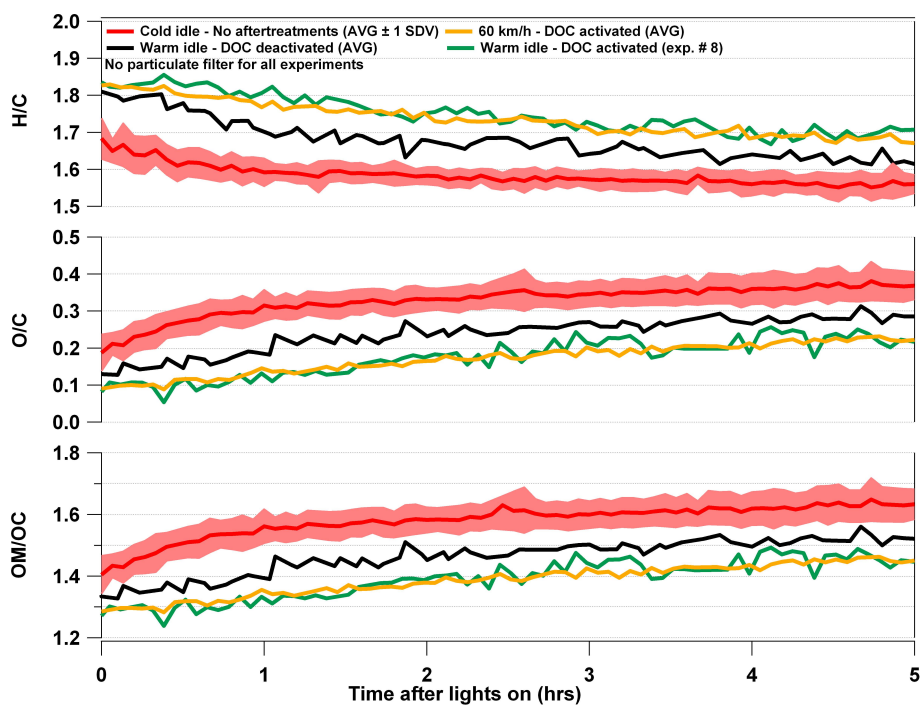


Fig. 8. Time series of average O/C and H/C atomic ratios and of average OM/OC ratios. The shaded areas represent the average values \pm one standard deviation.

Title Page

Abstract Introduction

Conclusions References

Tables Figures

◀ ▶

◀ ▶

Back Close

Full Screen / Esc

Printer-friendly Version

Interactive Discussion



Results from smog chamber experiments

R. Chirico et al.

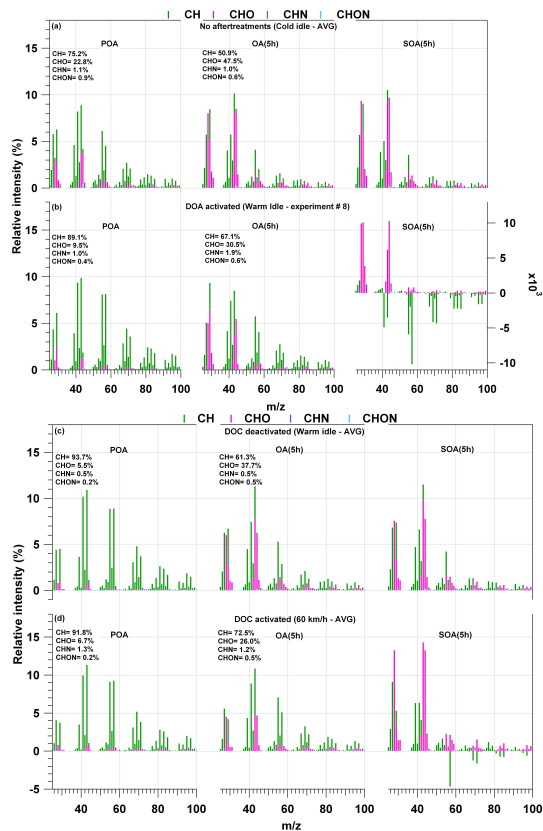


Fig. 9. Average mass spectra in high resolution of POA, OA after 5 h of aging (OA(5 h)) and SOA after 5 h of aging (SOA(5 h)) normalized to the total organic mass from diesel experiments with the Transporter **(a)**, the Astra with activated DOC **(b)**, only one experiment), the Astra with deactivated DOC **(c)** and the Astra at 60 km/h **(d)**.

Title Page

Abstract

Introduction

Conclusions

References

Tables

Figures

◀

▶

◀

▶

Back

Close

Full Screen / Esc

Printer-friendly Version

Interactive Discussion



Results from smog chamber experiments

R. Chirico et al.

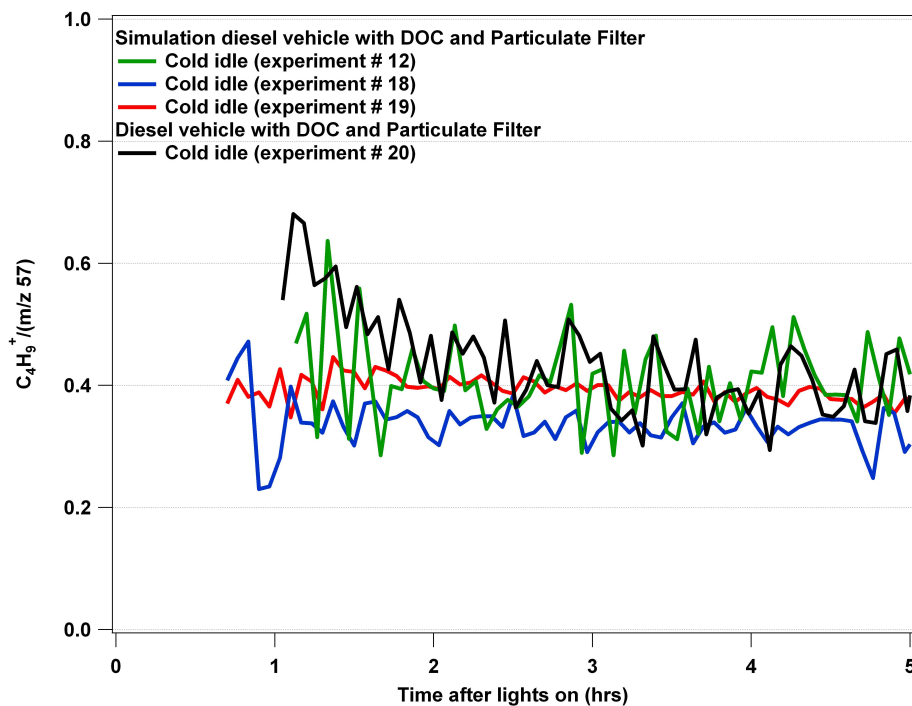


Fig. 10. Time series of the fraction of $C_4H_9^+$ to total $m/z 57$ signal from the diesel gas-phase only experiments.

[Title Page](#)[Abstract](#)[Introduction](#)[Conclusions](#)[References](#)[Tables](#)[Figures](#)[◀](#)[▶](#)[◀](#)[▶](#)[Back](#)[Close](#)[Full Screen / Esc](#)[Printer-friendly Version](#)[Interactive Discussion](#)

Results from smog chamber experiments

R. Chirico et al.

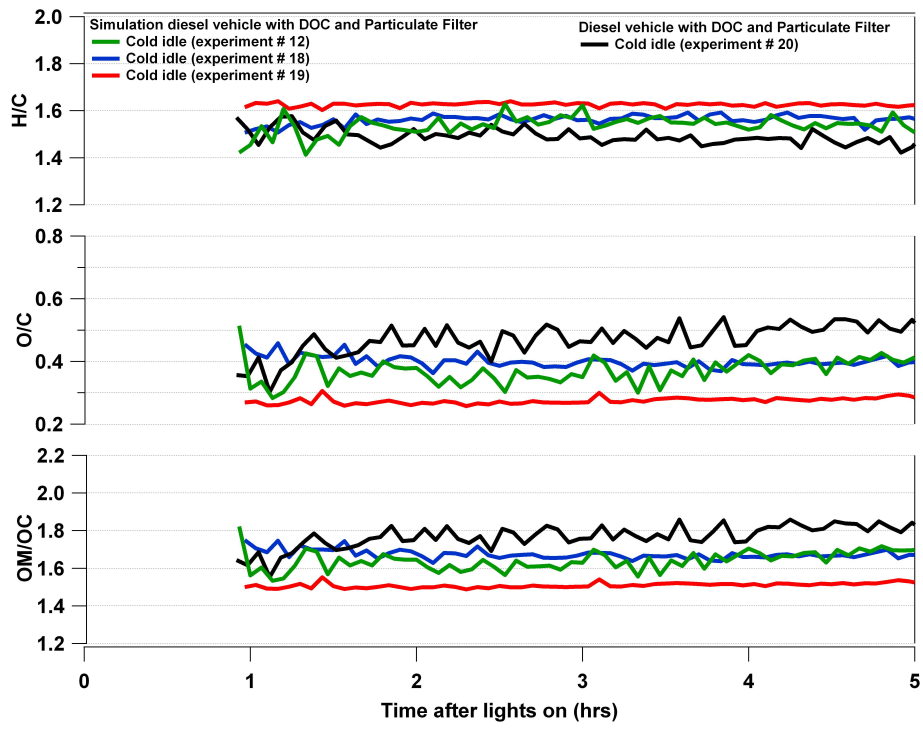


Fig. 11. Time series of O/C and H/C atomic ratios and OM/OC ratios from the diesel gas-phase only experiments.

Title Page

Abstract Introduction

Conclusions References

Tables Figures

◀

▶

◀

▶

Back

Close

Full Screen / Esc

Printer-friendly Version

Interactive Discussion



Results from smog chamber experiments

R. Chirico et al.

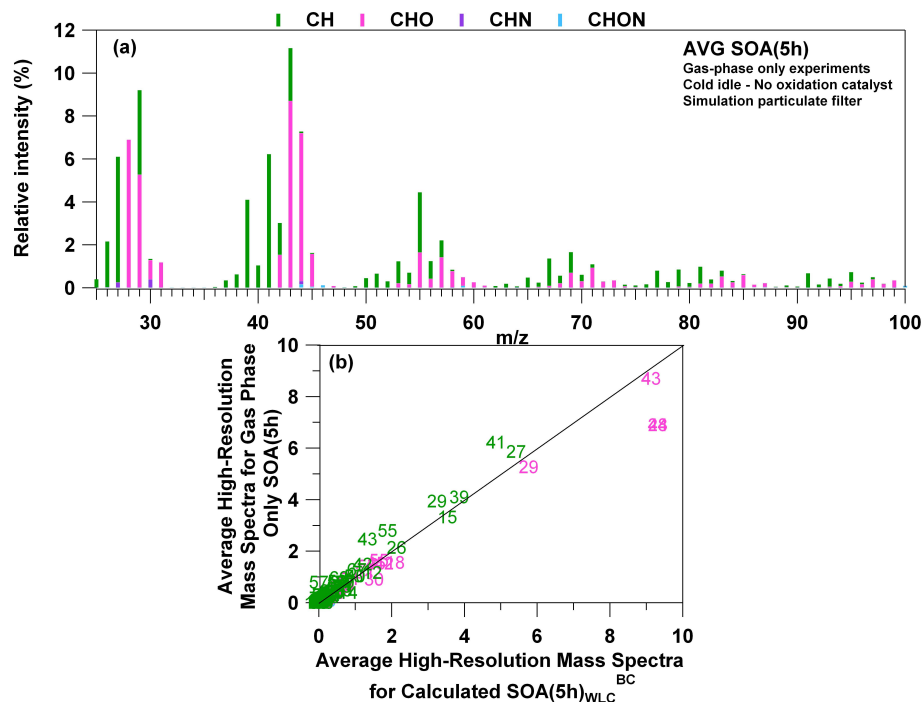


Fig. 12. Part (a) shows the average high-resolution mass spectrum of SOA after 5 h of aging from the diesel gas-phase only experiments (SOA (5 h), experiments #18 and 19 in Table 1) with the Transporter. Part (b) shows the scatter plot between the mass spectrum of SOA (5 h) versus the average SOA mass spectrum for the Transporter estimated with Eq. (7) for experiments #13 and 17 in Table 1.

Title Page

Abstract

Introduction

Conclusions

References

Tables

Figures

◀

▶

◀

▶

Back

Close

Full Screen / Esc

Printer-friendly Version

Interactive Discussion



Results from smog chamber experiments

R. Chirico et al.

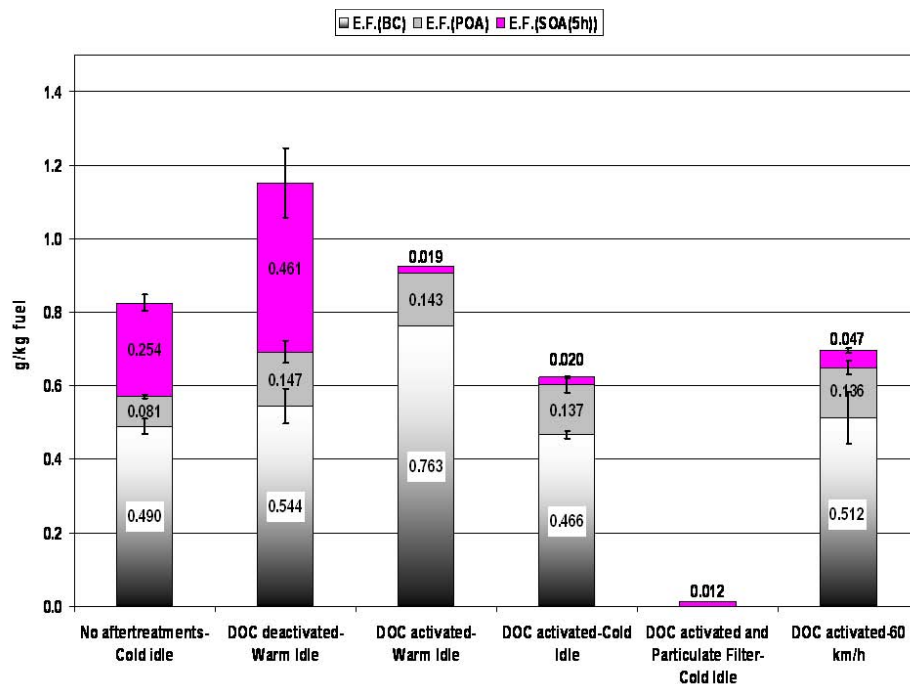


Fig. 13. Emission factors from in-use vehicles of POA, SOA and BC calculated with Eq. (1).

[Title Page](#)
[Abstract](#)
[Introduction](#)
[Conclusions](#)
[References](#)
[Tables](#)
[Figures](#)
[◀](#)
[▶](#)
[◀](#)
[▶](#)
[Back](#)
[Close](#)
[Full Screen / Esc](#)
[Printer-friendly Version](#)
[Interactive Discussion](#)


Results from smog chamber experiments

R. Chirico et al.

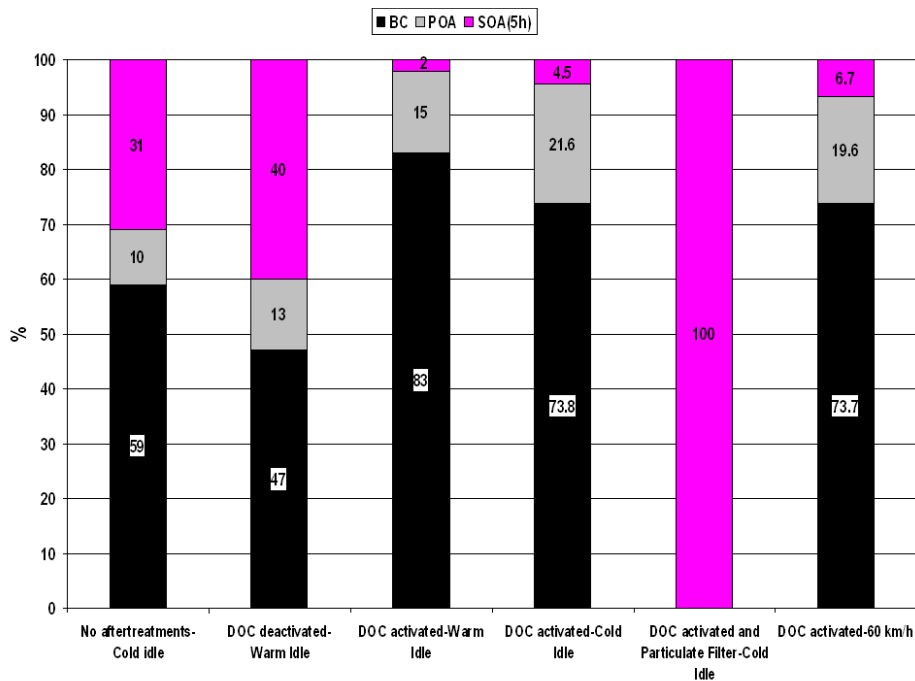


Fig. 14. Relative contribution of POA, SOA, and BC to total aerosol mass.

Title Page

Abstract

Introduction

Conclusions

References

Tables

Figures

◀

▶

◀

▶

Back

Close

Full Screen / Esc

Printer-friendly Version

Interactive Discussion

