

This discussion paper is/has been under review for the journal Atmospheric Chemistry and Physics (ACP). Please refer to the corresponding final paper in ACP if available.

Study of contrail microphysics in the vortex phase with a Lagrangian particle tracking model

S. Unterstrasser and I. Sölch

Deutsches Zentrum für Luft- und Raumfahrt (DLR) – Institut für Physik der Atmosphäre, Oberpfaffenhofen, 82234 Wessling, Germany

Received: 28 April 2010 – Accepted: 1 June 2010 – Published: 11 June 2010

Correspondence to: S. Unterstrasser (simon.unterstrasser@dlr.de)

Published by Copernicus Publications on behalf of the European Geosciences Union.

Contrail evolution during the vortex phase

S. Unterstrasser and
I. Sölch

Title Page

Abstract

Introduction

Conclusions

References

Tables

Figures

⏪

⏩

◀

▶

Back

Close

Full Screen / Esc

Printer-friendly Version

Interactive Discussion

Abstract

Crystal sublimation/loss is a dominant feature of the contrail evolution during the vortex phase and has a substantial impact on the later contrail-to-cirrus transition. Previous studies showed that the fraction of crystals surviving the vortex phase depends primarily on relative humidity, temperature and the aircraft type. An existing model for contrail vortex phase simulations (with a 2–moment bulk microphysics scheme) was upgraded with a newly developed state-of-the-art microphysics module (LCM) which uses Lagrangian particle tracking. This allows for explicit process-oriented modelling of the ice crystal size distribution in contrast to the bulk approach. We show that it is of great importance to employ an advanced microphysics scheme to determine the crystal loss during the vortex phase. The LCM-model shows even larger sensitivities to the above mentioned key parameters than previously estimated with the bulk model. The impact of the initial crystal number is studied and for the first time also the initial width of the crystal size distribution. Both are shown to be relevant. This corroborates the need for a realistic representation of microphysical processes and knowledge of the ice phase characteristics.

1 Introduction

1.1 General

Still it is not possible to determine the global coverage and radiative forcing (RF) of contrail-cirrus with suitable accuracy. Observations of contrail-cirrus are rare, since contrails lose their linear shape after a while (few hours) and the evolving contrail-cirrus can hardly be discriminated from naturally formed cirrus. This results in poor knowledge on contrail-cirrus properties. Thus, in a first step Large Eddy Simulation models (LES) should be used to better understand the contrail-to-cirrus transition and quantify the dominant atmospheric and aircraft parameters affecting it. Recently, the

ACPD

10, 14639–14674, 2010

Contrail evolution during the vortex phase

S. Unterstrasser and
I. Sölch

Title Page

Abstract

Introduction

Conclusions

References

Tables

Figures

⏪

⏩

◀

▶

Back

Close

Full Screen / Esc

Printer-friendly Version

Interactive Discussion



transition of single contrails into a contrail-cirrus was extensively studied with a LES-model (Unterstrasser and Gierens, 2010a,b). Among other things these simulations revealed that the early contrail evolution during the jet and vortex phase affects the optical properties and the lifetime of the contrail-cirrus even hours later, emphasising
5 the need for realistic vortex phase simulations.

1.2 Contrail evolution

Generally, the contrail evolution can be split into three phases (CIAP, 1975): the jet phase, the vortex phase and the dispersion phase. During the first 15–20 s (jet phase) the vorticity along the wings transforms into a counterrotating vortex pair. During the
10 mixing of the hot exhaust and the cold ambient air, ice crystals nucleate and form a contrail, if the Schmidt-Appleman criterion is fulfilled (Schmidt, 1941; Appleman, 1953; Schumann, 1996). During the vortex phase (up to 2–4 min) the vortex pair travels downward, referred to as primary wake, and captures most of the ice crystals. While descending the air becomes warmer due to adiabatic compression and the saturation
15 pressure rises. After a certain vertical displacement initially supersaturated air becomes subsaturated and the ice crystals start to sublimate. Quite a large fraction of the crystals can be lost depending mostly on relative humidity and temperature (Unterstrasser et al., 2008; Huebsch and Lewellen, 2006; Sussmann and Gierens, 1999). A minor fraction of crystals is detrained from the primary wake which forms a curtain of
20 ice between the primary wake and the original emission height, i.e. flight level. These crystals, forming the secondary wake, are not prone to sublimation since they can take up the excess water vapour of the supersaturated ambient air. Clearly, we only consider supersaturated cases as the contrails are not persistent otherwise. Thus, they experience a quite different microphysical evolution during the vortex descent than the
25 crystals in the primary wake. The crystal loss and the vertical expansion of the contrail are prominent features of the vortex phase evolution, which are both relevant for later properties of the evolving contrail cirrus, i.e. width, optical depth and lifetime (Unterstrasser and Gierens, 2010b). Early differences in the ice mass evolution, however,

Contrail evolution during the vortex phase

S. Unterstrasser and
I. Sölch

Title Page

Abstract

Introduction

Conclusions

References

Tables

Figures



Back

Close

Full Screen / Esc

Printer-friendly Version

Interactive Discussion



have no long-lasting effect on contrails, since the total ice mass of spreading contrails in supersaturated air usually increases by a few orders of magnitude. Thus, studies of the contrail's vortex phase should focus on the ice crystal number rather than mass evolution.

1.3 Numerical studies of the contrail's vortex phase

Most of the latest studies rely on 3-D-models (Lewellen and Lewellen, 2001; Huebsch and Lewellen, 2006; Paugam et al., 2010) with advanced dynamics, resolving in detail the features of vortex decay (vortex descent, Crow-instability, short-wave instability). One major drawback of the 3-D-approach are the high computational requirements, e.g., Paugam et al. (2010) presents only one simulation run. Contrarily 2-D-models are considerably faster and can be used to explore a large number of atmospheric parameters (Unterstrasser et al., 2008). As the present study also uses a 2-D-approach we will discuss (dis)advantages over 3-D-models in a later section.

Moreover, the various models use different microphysical schemes. Huebsch and Lewellen (2006) incorporated size-resolved ice microphysics (bin scheme) into an existing contrail model as used in Lewellen and Lewellen (2001) and pointed out for the first time that the crystal loss strongly depends on the employed microphysics module. In the earlier version of the model (Lewellen and Lewellen, 2001) the assumption of a monodisperse ice crystal size distribution led to a substantial underestimation of the crystal loss. With the present study we want to underline the relevance of microphysics. In Unterstrasser et al. (2008) (from now on abbreviated as UGS08) a two-moment bulk microphysics scheme was employed and the extent of the crystal loss agreed well with Huebsch and Lewellen (2006) using a bin scheme. Nevertheless, further simulation runs (Unterstrasser, 2008, not shown in UGS08) revealed that the extent of the crystal loss depends in a non-negligible way on details of the sublimation parameterisation. Although the general findings/statements are not affected, this ambiguity gave the motivation to upgrade the existing contrail model as described in UGS08 with the Lagrangian LCM-scheme which explicitly simulates the crystal sublimation and loss.

Contrail evolution during the vortex phase

S. Unterstrasser and
I. Sölch

Title Page

Abstract

Introduction

Conclusions

References

Tables

Figures

⏪

⏩

◀

▶

Back

Close

Full Screen / Esc

Printer-friendly Version

Interactive Discussion



The purpose of the present study is to demonstrate that microphysical aspects are of primary importance and advanced microphysics schemes are necessary to investigate the contrail's vortex phase.

The paper is structured as follows: We begin with a brief description of the basic model and the employed microphysics routines in the following section. The various numerical studies and results are presented in Sect. 3. We discuss more general implications of our results in Sect. 4 and draw conclusions in the final Sect. 5. A list of symbols is given in Table 3.

2 Model description and setup

We shortly repeat the description of the numerical model, as it is explained in detail in UGS08. The model core is EULAG (Smolarkiewicz and Margolin, 1997) which solves the anelastic formulation of the momentum and energy equations and employs the positive-definite advection algorithm MPDATA (Smolarkiewicz and Margolin, 1998). The microphysics modules are fully coupled to EULAG. We restrict ourselves to a 2-D-approach which allows to perform an ample number of simulations.

Generally the vortex decay is too slow in a 2-D-model, since the Crow-instability (an oscillation along the flight direction and the main process for the vortex decay, Crow, 1970) is a 3-D-phenomenon and is not resolved in our model. We devised a module, which monitors the vortex evolution and assures a realistic vortex decay as based on the parameterisation of Holzäpfel (2006). The correction is accomplished by artificially increasing the diffusion coefficient around the vortices. More details are given in UGS08.

In the next sections we describe the two microphysics modules used in this study. Depending on which microphysics module was used in the model, we call the model version either “BM” or “LCM”.

Contrail evolution during the vortex phase

S. Unterstrasser and
I. Sölch

Title Page

Abstract

Introduction

Conclusions

References

Tables

Figures

⏪

⏩

◀

▶

Back

Close

Full Screen / Esc

Printer-friendly Version

Interactive Discussion

2.1 Bulk microphysics module (BM)

For the calculations of the ice microphysics in the original model version we use a recently developed parameterisation of bulk microphysics (Spichtinger and Gierens, 2009) based on a two moment scheme (i.e. prognostic equations for ice crystal mass and number concentration) incorporating microphysical processes like deposition growth, sublimation of ice crystals and sedimentation. The homogeneous freezing and heterogeneous nucleation routines are turned off for the present study. Contrary to the published microphysics module we used an earlier version that does not include corrections in the kinetic regime and for ventilation effects which are described in Sect. 3.3 of Spichtinger and Gierens (2009). However, comparisons of this version which was already used in UGS08 and the latest one showed negligible differences.

For the ice crystal mass distribution we prescribe a lognormal distribution with a fixed geometrical width σ_m but variable geometric mean mass m_0 :

$$n(m) = \frac{N}{\sqrt{2\pi} \ln \sigma_m m} \times \exp \left[-\frac{1}{2} \left(\frac{\ln m / m_0}{\ln \sigma_m} \right)^2 \right]. \quad (1)$$

The total ice crystal number concentration N is the zeroth moment of the mass distribution. Analogously, the ice mass concentration IWC is the first moment. In case of a log-normal distribution the width of the distribution can alternatively be given by the parameter r , defined as

$$r := \exp \left((\ln \sigma_m)^2 \right). \quad (2)$$

The meaning of this parameter is explained in detail in Spichtinger and Gierens (2009). The relationship of the geometric mean mass m_0 and the mean mass $\bar{m} = \text{IWC} / N$ is then

$$m_0 = \bar{m} / \sqrt{r}. \quad (3)$$

Contrail evolution during the vortex phase

S. Unterstrasser and
I. Sölch

Title Page

Abstract

Introduction

Conclusions

References

Tables

Figures

⏪

⏩

◀

▶

Back

Close

Full Screen / Esc

Printer-friendly Version

Interactive Discussion



Contrail evolution during the vortex phase

S. Unterstrasser and
I. Sölch

Title Page

Abstract

Introduction

Conclusions

References

Tables

Figures

⏪

⏩

◀

▶

Back

Close

Full Screen / Esc

Printer-friendly Version

Interactive Discussion



The sensitivity study addressing the impact of the width will be presented in terms of r .

We assume droxtal shape for crystals with maximal length $L < 7.41 \mu\text{m}$ and hexagonal columnar shape for larger crystals. We assume a mass-size-relation $m = aL^b$ (L and m in cgs-units) with $a = 5.261 \times 10^{-1}$ and $b = 3.0$ for the droxtals and $a = 1.649 \times 10^{-4}$ and $b = 2.2$ for the larger crystals (Heymsfield and Iaquinta, 2000).

For simulations of natural cirrus the parametrisation of the sublimation process may not be of dominant importance, as the BM generally shows good agreement with observations as several validation exercises have proven (Fusina and Spichtinger, 2010; Joos et al., 2009). However, in our simulations of the contrail's vortex phase additional aircraft-triggered phenomena occur and the sublimation parameterisation becomes significant for the estimate of crystal loss. Hence, we explain this part in more detail. In subsaturated air a certain fraction f_m of ice mass sublimates within one timestep.

$$f_m = \frac{q_c(t) - q_c(t + \Delta t)}{q_c(t)} \Big|_{\text{DEP}}, \quad (4)$$

where q_c is the ice mass mixing ratio. Then the fractional reduction of number concentration f_n is simply deduced by

$$f_n = f_m^\alpha, \quad (5)$$

where α is set to 1.1. A sublimation parameter $1.0 < \alpha < 1.5$, as suggested by numerical studies of Harrington et al. (1995), implies that $f_n \leq f_m$. The larger α is chosen, the fewer crystals sublimate, since f_n is smaller for the same f_m . For our model problem the sublimation parameterisation turned out to be not sufficiently sophisticated as the computed fractional reduction f_n is independent of the mean mass and width of the crystal size distribution (Gierens and Bretl, 2009) which leads to irreducible uncertainties in the crystal loss computation (Unterstrasser, 2008). To handle this uncertainty in our model task, we used the LCM microphysics module that directly simulates the crystal number loss and avoids this ambiguity.

2.2 Lagrangian particle tracking microphysics module (LCM)

This section presents the recently developed microphysics module LCM (Sölch and Kärcher, 2010), originally designed to study the formation of natural cirrus clouds with a thorough, explicit representation of size-resolved non-equilibrium aerosol and ice microphysical processes. In its complete form the LCM comprises explicit aerosol and ice microphysics, covering nonequilibrium growth of liquid supercooled aerosol particles, their homogeneous freezing, heterogeneous ice nucleation of ice nuclei in the deposition or immersion mode, growth of ice crystals by deposition of water vapour, their gravitational sedimentation, aggregation between ice crystals due to differential sedimentation, turbulent dispersion, latent heat release, and radiative impact on particle growth. Coupled to EULAG, a combined Eulerian/Lagrangian approach is used to simulate the formation and evolution of cirrus and contrails. While dynamics and gas phase are treated using a fixed Eulerian grid, the ice phase is tackled by tracking a large number of simulation ice particles (SIP) individually. Each SIP represents a number of real ice crystals ranging between 10 – 10^6 (typically $\mathcal{O}(10^4)$) usually determined by the conditions prevailing during the formation of ice crystals. In a statistical sense, average ice phase properties per grid box containing N_p SIPs converge with increasing sample size $\propto 1/\sqrt{N_p}$ (Sölch and Kärcher, 2010). In the special case of the simulations in the present work, we only model the deposition/sublimation process, sedimentation, and turbulent dispersion.

Growth and sublimation of ice crystals are calculated for individual SIPs governed by the deposition equation. SIPs with sizes smaller than $r_{\text{crit}} \approx \mathcal{O}(10^{-8} \text{ m})$ are treated as completely sublimated. The actual value of r_{crit} depends on the assumed ice nuclei size.

An additional turbulent velocity component, derived from the turbulent kinetic energy per unit mass, accounts for turbulent dispersion of the ice crystals.

For a detailed description we refer to Sölch and Kärcher (2010).

Contrail evolution during the vortex phase

S. Unterstrasser and
I. Sölch

Title Page

Abstract

Introduction

Conclusions

References

Tables

Figures

⏪

⏩

◀

▶

Back

Close

Full Screen / Esc

Printer-friendly Version

Interactive Discussion



2.3 Microphysical aspects

In the BM the present ice mass is mapped to a prescribed lognormally-shaped distribution $n(m)$ after each time step. The mass growth rate for the bulk ice phase in a grid box is computed via the assumed distribution. In contrast, in the LCM the ice mass distribution is allowed to develop freely and the growth rate for the population of crystals is based on the deposition of water vapour on individual crystals. Their sublimation and loss is treated explicitly, whereas in BM the sublimation process is parametrised, yielding differences in the crystal number concentrations. Nevertheless, under identical thermodynamical conditions both versions compute the same bulk mass values, pointing out that the intermodel deviations of the deposition process are negligible.

The treatment of ice crystal advection is also different. The BM uses an Eulerian approach and the ice crystals are homogeneously distributed over one gridbox. Contrariwise, in the LCM the ice crystals are transported in an Lagrangian sense and have specified position within one gridbox and as a consequence suffer less numerical dispersion.

In both models, radiative heating of crystal surfaces is switched off since contrail particles are rather small (Gierens, 1994) and the simulation time scale is short (Unterstrasser and Gierens, 2010b).

Although aggregation by differential sedimentation is included in the EULAG-LCM (Sölch and Kärcher, 2010), we neglect this process in the simulations. In the presence of the wake vortices and smaller turbulent eddies during the break-up the collision efficiency may be raised by different accelerations of the inertial ice crystals. Studies for water clouds quantify the turbulent enhancement of the collision efficiency for spherical droplets with radii below $30\ \mu\text{m}$ (Khain et al., 2007; Pinsky et al., 2008). However, these studies assume that each collision leads to coalescence of the droplets. This assumption does not hold for compact (i.e. droxtal or spherical shaped) ice crystals, especially in the cold temperature range $<225\text{K}$ where contrails form. Hence, the sticking efficiency is very low (Hobbs, 1965).

Contrail evolution during the vortex phase

S. Unterstrasser and
I. Sölch

Title Page

Abstract

Introduction

Conclusions

References

Tables

Figures



Back

Close

Full Screen / Esc

Printer-friendly Version

Interactive Discussion



2.4 Simulation setup

We model contrails generated by a large aircraft like Airbus A340 or Boeing B747 (see Table 1 for aircraft and further model parameters). We follow the contrail evolution in a 2-D domain with extensions of $L_x=256$ m and $L_z=500$ m in horizontal and vertical direction, respectively. The atmosphere is stably stratified with $N_{\text{BV}}=10^{-2}$ s⁻¹. White noise is added to the velocity and temperature variables.

At initialisation we assume that the vortex roll-up process is fully completed and impose two counter-rotating vortices with an Hallock-Burnham profile of tangential velocity and an initial circulation $\Gamma_0=650$ m² s⁻¹. The vertical velocity field induced by the two wake vortices is sketched in Fig. 1. An analytical description of the vortex velocity field is given in UGS08.

We assume that the initial ice crystals contain exactly the amount of the water vapour emitted due to fuel burning. An assumed fuel flow of $\dot{m}_f=3$ kg/s and an emission index of water $\text{EI}_{\text{H}_2\text{O}}=1.25$ kg/kg yield $\mathcal{J}_0^*=1.46\times 10^{-2}$ kg/m ice mass per meter flight path. The number of ice crystals per meter of flight path is $\mathcal{N}_0=\mathcal{N}_0^*:=3.4\times 10^{12}$ m⁻¹, which corresponds to an “emission” index $\text{EI}_{\text{icecrystals}}=2.3\times 10^{14}$ kg⁻¹ and an initial mean crystal diameter of 2.2 μm . The crystals are spatially uniformly distributed inside two circles around the vortex cores with radius $r=20$ m representing the approximate plume dimension (as indicated by the black circles in Fig. 1).

All baseline simulations use the above settings and are finally characterised by prescribing the relative humidity RH_i^* and the temperature T^* . The humidity field in the domain (also in the plume area) is uniform with constant RH_i^* (apart from small turbulent deviations around RH_i^*) and T^* is the temperature at cruise altitude.

To allow conclusive comparisons between the two model versions BM and LCM, we initially prescribe the same lognormal ice crystal mass distribution (see Eq. 1) with $r^*=4$ and m_0 as indicated above. For convenience the mass distributions are converted into size distributions (SD), using the mass-size relationship, presented in Sect. 2.1. In LCM the crystals are represented by $N_\rho=1000$ SIPs in each gridbox. Overall, we

Contrail evolution during the vortex phase

S. Unterstrasser and
I. Sölch

Title Page

Abstract

Introduction

Conclusions

References

Tables

Figures

⏪

⏩

◀

▶

Back

Close

Full Screen / Esc

Printer-friendly Version

Interactive Discussion



track more than 2×10^6 SIPs, each representing on average 1.5×10^6 ice crystals. In a sensitivity experiment, N_p was varied. For the chosen value of N_p , we found that a further increase of N_p did not change the simulations results any longer. Moreover, the mass distribution is then well resolved over time and a large range.

3 Results

In previous studies the impact of basic parameters like relative humidity and temperature was investigated (UGS08; Huebsch and Lewellen, 2006; Lewellen and Lewellen, 2001).

In this paper we will repeat simulations with the newly developed LCM-microphysics to study the impact of the basic parameters T and RH_i and check whether the results previously obtained with the two-moment bulk scheme are reliable.

Instead of focusing on further atmospheric parameters as done in UGS08, we exploit the skills of the LCM-module in order to study how the contrail evolution is affected by variations of the initial microphysical properties of the ice phase. For instance, we vary the initial number of ice crystals as well as the initial width of the SD.

To analyse the crystal loss during the vortex phase, we define several quantities, following UGS08. The total ice crystal number (per meter of flight path) is

$$\mathcal{N}_{\text{tot}}(t) = \iint N(x, z, t) dx dz. \quad (6)$$

In order to determine the ice crystal number in the primary wake, denoted as $\mathcal{N}_{\text{prim}}(t)$, the integral is confined to $r=50$ m circles around the centres of the two vortices. The ice crystal number in the secondary wake, \mathcal{N}_{sec} , can be deduced by subtracting the primary ice crystal number $\mathcal{N}_{\text{prim}}$ from the total ice mass \mathcal{N}_{tot} .

Since the study focuses on the crystal loss, we define the fraction f of crystals present in a certain wake segment:

$$f_{\mathcal{N}, \#}(t) = \mathcal{N}_{\#}(t) / \mathcal{N}_0 \quad \text{with } \# = \text{'tot'}, \text{'prim'}, \text{'sec'}. \quad (7)$$

Contrail evolution during the vortex phase

S. Unterstrasser and
I. Sölch

Title Page

Abstract

Introduction

Conclusions

References

Tables

Figures

◀

▶

◀

▶

Back

Close

Full Screen / Esc

Printer-friendly Version

Interactive Discussion



The corresponding quantities for ice mass $\mathcal{J}_{\text{tot}}(t)$, $\mathcal{J}_{\text{prim}}$, \mathcal{J}_{sec} , and $f_{\mathcal{J},\#}(t)$ are defined analogously with IWC replacing N .

The term “surviving” ice crystals/mass refers to the time of vortex breakup t_{breakup} and the fraction of surviving ice crystals/mass is denoted with an additional subscript S .

The vortex life time as parameterised by Holzäpfel (2006) represents a best guess within an envelope of possible values of t_{breakup} . The envelope gives upper/lower bounds for t_{breakup} and accounts for inherent variability of the vortex evolution. The point of time t_{breakup} where we evaluate the microphysical contrail properties may easily be shifted by ± 5 s for the same prescribed ambient conditions. For the chosen stability and ambient turbulence level (see values of N_{By} and ϵ in Table 1) $t_{\text{breakup}}=135$ s.

The mean diameter of the (mass-equivalent spherical) crystals is given by

$$D_{\#}(t) = \left(\frac{\mathcal{J}_{\#}(t)}{\mathcal{N}_{\#}(t)} \frac{6}{\pi \rho_{\text{ice}}} \right)^{\frac{1}{3}}. \quad (8)$$

All the results discussed in following sections refer to baseline case simulations with specified temperature T^* and relative humidity $\text{RH}_i^* = 1 + s_i^*$ (supersaturation s_i^*). The variable names superscripted with a star refer to the simulation setting, whereas RH_i and T denote the value at a certain location and time. In the following subsections the sensitivity of the spatial and temporal ice distribution to various parameters like relative humidity, temperature and parameters of the initial size distribution (short ISD) is discussed.

3.1 Temporal evolution of microphysical properties

Figure 2 summarises the temporal evolution of the fractions of ice mass $f_{\mathcal{J},\text{prim}}(t)$ and ice number $f_{\mathcal{N},\text{prim}}(t)$ in the primary wake for various humidity values and $T^*=217$ K. During the first 20–40 s the ice mass increases for $s_i^* > 0$ until the excessive water vapour completely deposits on the ice crystals and saturation is reached in the plume (we call this deposition phase). The timescale of this initial deposition (due to the

Contrail evolution during the vortex phase

S. Unterstrasser and
I. Sölch

Title Page

Abstract

Introduction

Conclusions

References

Tables

Figures

⏪

⏩

◀

▶

Back

Close

Full Screen / Esc

Printer-friendly Version

Interactive Discussion



high crystal number concentrations) is short and barely interferes with the relative humidity decrease induced by the adiabatic heating. Hence, the added ice mass ΔJ depends in a more or less linear fashion on the (initial) supersaturation s_i^* and the area of the primary wake A_{prim} ($\Delta J \approx \text{const} \times s_i^* \times A_{\text{prim}}$). Subsequently, the ice mass starts to decrease, since the plume is steadily subsaturated as the temperature increases adiabatically during the descent. This temporal segment is referred to as “sublimation phase”. Generally the mass evolution in the different model versions agrees well, pointing out that the implementation of the physical process of deposition mass growth raises only few intermodel deviations. The small differences of the peak values during the deposition phase can be easily explained by the different advection schemes used in the two models. The LCM-model is less dispersive and the ice crystals are distributed over a smaller area and thus less vapour deposits on them than in BM. However, these early differences are not relevant since they are practically gone after $t=60$ s. After about $t=100$ s the ice mass decreases more slowly or even increases, since the decaying vortex pair sinks down at a slower rate (slower decrease of relative humidity due to adiabatic compression). In the outer areas of the primary wake entrainment of ambient supersaturated air causes crystal growth.

While the mass evolution is similar in BM and LCM, the temporal evolution of the crystal number is qualitatively and quantitatively different for both models. Contrary to the mass the normalised crystal number does not increase and always stays below unity since nucleation is completed at the time of initialisation. In BM the crystal number starts to decline from the very beginning. In the BM crystal loss occurs in each gridbox where the ice mass decreases within one timestep and is independent of the actual size (distribution) of the crystals for a specific f_m (see Eq. 5). Contrariwise, in the LCM-model the sublimation term is treated explicitly considering the actual size of the individual crystals. Therefore, no crystals are basically lost during the deposition phase. And even when the majority of crystals starts to shrink afterwards, the crystal number is still conserved. Crystal loss sets in delayed, as it takes time until the smallest crystals are totally sublimated. Once the crystal loss started, the LCM shows a faster

Contrail evolution during the vortex phase

S. Unterstrasser and
I. Sölch

[Title Page](#)[Abstract](#)[Introduction](#)[Conclusions](#)[References](#)[Tables](#)[Figures](#)[⏪](#)[⏩](#)[◀](#)[▶](#)[Back](#)[Close](#)[Full Screen / Esc](#)[Printer-friendly Version](#)[Interactive Discussion](#)

decrease than the BM since many crystals are close to the sublimation threshold radius r_{crit} .

Figure 3 shows how the SD evolves with time for $\text{RH}_i=120\%$ in the LCM. We can observe an increase in the number concentration of small particles, starting at $t=60$ s, forming a sublimation tail (see $t=80$ s). Subsequently, the crystals reach r_{crit} and sublimate completely. Such a tail can principally not be represented in BM.

The LCM shows a stronger sensitivity to RH_i^* than the BM. For the investigated RH_i^* -range from 100% to 140% between basically zero up to 90% of the initial crystals survive in the primary wake. In contrast, in BM the values range between zero and 50%.

3.2 Impact of relative humidity and temperature

In this section we investigate how the ice crystal number/mass and the mean crystal diameter at the end of the vortex phase (at $t_{\text{breakup}}=135$ s) depend on relative humidity and temperature. In Fig. 4 the results are plotted for the total, primary and the secondary wake and the two models.

Generally, the surviving ice crystal number and mass as well as the mean diameter increase with relative humidity. As most crystals are part of the primary wake, the total number of ice crystals $f_{\mathcal{N},\text{tot},s}$ is strongly coupled to the number of primary ice crystals $f_{\mathcal{N},\text{prim},s}$. For low supersaturations $s_i^* \lesssim 10\text{--}20\%$, $f_{\mathcal{N},\text{tot},s}$ increases strongly with s_i^* , especially for higher temperature. For larger supersaturations $f_{\mathcal{N},\text{tot},s}$ increases less strongly with humidity. Qualitatively, the results of both models are similar. Yet, the BM values converge to ~ 0.7 , far below unity and the LCM converges to ~ 1 . For high supersaturations the SD barely reaches the r_{crit} -threshold at t_{breakup} and very few crystals completely sublimate in the LCM. However, in BM the crystals are prognosed to be lost as soon as the ice mass starts to decrease.

The fraction $f_{\mathcal{N},\text{tot},s}$ also depends strongly on temperature. The sensitivity to T^* is largest at moderate supersaturations around $s_i^* \sim 20\%$, where the $f_{\mathcal{N},\text{tot},s}$ -values range over a large interval for the various temperatures. At smaller s_i^* , the spread in $f_{\mathcal{N},\text{tot},s}$

Contrail evolution during the vortex phase

S. Unterstrasser and
I. Sölch

Title Page

Abstract

Introduction

Conclusions

References

Tables

Figures

◀

▶

◀

▶

Back

Close

Full Screen / Esc

Printer-friendly Version

Interactive Discussion



Contrail evolution during the vortex phase

S. Unterstrasser and
I. Sölch

Title Page

Abstract

Introduction

Conclusions

References

Tables

Figures

⏪

⏩

◀

▶

Back

Close

Full Screen / Esc

Printer-friendly Version

Interactive Discussion



is smaller since the high temperature curve is bounded by 0. At the upper part of the humidity range, $f_{\mathcal{N},\text{tot},s}$ converges for all temperatures. Again, the LCM shows more variation than the BM. In a colder environment more crystals survive since the mass sublimation proceeds more slowly. At $s_i^*=0\%$, $f_{\mathcal{N},\text{tot},s}$ ranges from nearly 0 (at $T^*=222$ K) to 0.4 (at $T^*=209$ K). At $s_i^*=20\%$ the spread $\Delta f_{\mathcal{N},\text{tot},s}$ is close to 0.6.

The number of crystals in the secondary wake is nearly independent of the ambient conditions, except for small supersaturations. In this case the secondary wake contains fewer crystals, since detrainment from the primary wake stops early. Furthermore, turbulent motions are more likely to generate subsaturated patches where crystals are prone to complete sublimation. The maximum number of crystals is different for the two models (0.15 BM, 0.06 LCM) as more crystals are detrained from the sinking vortices in the BM. Compared with previous numerical studies the values of both model versions are within a realistic range.

The ice mass fraction (middle row) depends more sensitively on relative humidity than the ice number fraction, implying that also the mean diameter (bottom row) increases with RH_i^* . The ice mass fraction $f_{\mathcal{J},\text{prim},s}$ in the primary wake matches very well for both models. This again elucidates that the sublimation parameterisation is the main reason leading to different $f_{\mathcal{N},\text{prim},s}$ -values. It also demonstrates that the feedback of the ice crystal number evolution on the ice mass evolution is small in this case.

3.3 Impact of the initial width of the ice crystal size distribution

In this section we investigate how the width of the initial size distribution (ISD) affects the crystal loss. We varied the width parameter from $r=4$ (broad) to $r=1.1$ (narrow). Since it seems that the standard value $r^*=4$ gives a rather broad SD (see discussion section), we only considered narrower distributions. Additionally, we initialised a run with a monodisperse distribution. We want to emphasise that only the ISD is varied, the total ice crystal mass and number are the same in all simulations. The median mass m_0 increases for decreasing r (see Eq. 3) which is apparent in the ISD (see Fig. 6, top-left).

Figure 5 shows the ice crystal mass/number fraction in the primary wake at $RH_i^*=120\%$ and $T^*=217\text{ K}$. For both models the ice mass evolution is similar irrespective of the width of ISD. Again, the differences in the details of the SD do not affect the mass evolution.

Concerning the ice crystal number the BM shows the same loss for all studied ISDs. This is a consequence of the sublimation parameterisation and the assumption of r being constant with time. This reveals that BM is inadequate to explore this microphysical parameter. Therefore, we will only discuss the LCM-model results in this section.

For the specific ambient conditions ($RH_i^*=120\%$ and $T^*=217\text{ K}$) the standard simulation ($r=r^*=4$) shows the largest crystal loss which decreases with decreasing r . The fractions $f_{N,tot,s}(r)$ spread over a range from 0.59 to 0.92, proving that the width parameter r is significant for crystal loss. If the ISD is narrow, it takes longer until the sublimation tail of the SD reaches the critical radius and crystals start to sublimate completely (see left panel of Fig. 6).

The right panel of Fig. 6 shows the total SDs as well as these in the primary and secondary wake after 120 s. As most crystals are part of the primary wake, the SD of the total wake resembles the primary SD. More surprising, however, is the fact that the SDs in the secondary wake are practically independent of the initial setting. This implies that the properties of the secondary wake are far more controlled by ambient conditions than by the initialisation.

We investigated the sensitivity to r for further ambient conditions. In drier conditions ($RH_i^*=105\%$ and $T^*=217\text{ K}$) the effect of a r -variation is opposite to the latter case. This means that the fraction of surviving ice crystals is largest when the ISD is broad and fewer crystals survive for a narrower ISD. Generally in a drier environment more crystals are lost, here $f_{N,tot,s}(r)$ ranges from 2.1% ($r=1.1$) to 1.0% ($r=4.0$). All crystals initially belonging to the left part of the SD will be lost anyway for all r 's and only initially large crystal are likely to survive the vortex phase. Since a broader distribution has more larger particles than a narrow distribution, more crystals survive in this case. Contrary to the latter case with $RH_i^*=120\%$ now the shape/position of the right part instead of

Contrail evolution during the vortex phase

S. Unterstrasser and
I. Sölch

[Title Page](#)[Abstract](#)[Introduction](#)[Conclusions](#)[References](#)[Tables](#)[Figures](#)[⏪](#)[⏩](#)[◀](#)[▶](#)[Back](#)[Close](#)[Full Screen / Esc](#)[Printer-friendly Version](#)[Interactive Discussion](#)

the left part of the ISD is significant for the crystal loss.

In a next step we normalise the results for the various r 's with the default run and introduce a sensitivity function

$$f_{r,\text{norm}}(r) := \frac{f_{\mathcal{N},\text{tot},s}(r)}{f_{\mathcal{N},\text{tot},s}(r^*)}. \quad (9)$$

5 Figure 7 shows $f_{r,\text{norm}}(r)$ and the corresponding scaling factors $f_{\mathcal{N},\text{tot},s}(r^*)$. Thus, $f_{r,\text{norm}}(r)$ contains solely the sensitivity to r , while the scaling factors comprise all other sensitivities of the standard run.

The nearly horizontal curve for the BM simulations corroborates the insensitivity of the BM to the variations in r . In the LCM the largest relative change in $f_{r,\text{norm}}$ occurs for 10 $\text{RH}_i^* = 110\%$. Around 14% of the ice crystals survive for an broad ISD and nearly three times more ice crystals (38%) for a narrow ISD.

If narrow ISDs were more likely to occur, the basic problem of quantifying the crystal loss would aggravate. Compared to the standard runs with a broad ISD, for narrower ISDs fewer crystals survive at low supersaturations and more survive at higher super- 15 saturation. This increases the sensitivity to relative humidity and other meteorological parameters like temperature T^* (not shown). In the limiting (yet unrealistic) case with a monodisperse SD, hypothetically crossing the critical radius r_{crit} in one instance, the function $f_{\mathcal{N},\text{tot},s}(\text{RH}_i^*)$ would resemble a step function. Above a certain critical humidity $\text{RH}_{i,\text{crit}}$ none of the crystals would be lost, below all crystal would be lost.

20 3.4 Impact of initial ice number

In this section we vary the initial number of ice crystals $\mathcal{N}_0 = \mathcal{N}_0^* \times \beta_s$ with $\beta_s \in \{0.1, 0.5, 1.0, 5.0, 10.0\}$ under several ambient conditions. Since the emitted water vapour ($\propto \dot{m}_f$) and accordingly the initial ice mass are unchanged, the ISD is shifted towards smaller or larger values. The variation in \mathcal{N}_0 can also be interpreted as a vari- 25 ation of $\text{El}_{\text{icecrystals}} \in [2.3 \times 10^{13}, 2.3 \times 10^{15}] \text{ kg}^{-1}$.

Contrail evolution during the vortex phase

S. Unterstrasser and I. Sölch

Title Page

Abstract

Introduction

Conclusions

References

Tables

Figures

⏪

⏩

◀

▶

Back

Close

Full Screen / Esc

Printer-friendly Version

Interactive Discussion



Analogously to the previous section, we define a sensitivity function

$$f_{\mathcal{N}_0, \text{norm}}(\mathcal{N}_0) := \frac{f_{\mathcal{N}, \text{tot}, s}(\mathcal{N}_0)}{f_{\mathcal{N}, \text{tot}, s}(\mathcal{N}_0^*)}. \quad (10)$$

Figure 8 shows how the fraction $f_{\mathcal{N}_0, \text{norm}}(\mathcal{N}_0)$ is affected by \mathcal{N}_0 . For all studied cases, the fewer crystals are initially present, the larger the fraction of surviving crystals is.

5 If \mathcal{N}_0 is small, the crystals are larger on average at the end of the deposition phase (not shown). Hence the ice crystal surface area is reduced and the subsequent mass sublimation proceeds slower, which in turn raises the fraction of surviving ice crystals. Apart from the different deposition/sublimation rates, $f_{\mathcal{N}}$ is larger for lower \mathcal{N}_0 for a second reason: If \mathcal{N}_0 is small, the SDs are located around a larger L and it takes longer
 10 until the sublimation tail reaches the critical radius r_{crit} . This second effect occurs only in the LCM.

The loglog-plot reveals that $f_{\mathcal{N}, \text{tot}, s}$ depends on \mathcal{N}_0 in a powerlaw fashion. So the fraction of surviving crystals for any suitable \mathcal{N}_0 may be approximated using $f_{\mathcal{N}, \text{tot}, s}(\mathcal{N}_0^*)$ of the default run.

$$15 \quad f_{\mathcal{N}_0, \text{norm}}(\mathcal{N}_0) \approx \left(\frac{\mathcal{N}_0}{\mathcal{N}_0^*} \right)^{-\gamma}. \quad (11)$$

The exponent γ depends on the ambient conditions. For $T^*=217$ K and $\text{RH}_i^*=105\%$ it is about 0.65 in the BM and 0.8 in the LCM. In a more humid environment, the crystal loss is less critical and the sensitivity to \mathcal{N}_0 is lower. For $\text{RH}_i^*=120\%$ γ is approximately 0.25. The exponent γ also depends on temperature and width of the ISD. For increasing
 20 temperature and narrower ISD, γ is likely to increase. From Eq. (11) we can derive the total number of surviving ice crystals

$$\mathcal{N}_{\text{tot}, s}(\mathcal{N}_0) \approx \mathcal{N}_{\text{tot}, s}(\mathcal{N}_0^*) \left(\frac{\mathcal{N}_0}{\mathcal{N}_0^*} \right)^{1-\gamma}. \quad (12)$$

Contrail evolution during the vortex phase

S. Unterstrasser and
I. Sölch

Title Page

Abstract

Introduction

Conclusions

References

Tables

Figures

◀

▶

◀

▶

Back

Close

Full Screen / Esc

Printer-friendly Version

Interactive Discussion



The ratio $\frac{\mathcal{N}_0}{\mathcal{N}_0^*}$ describes the variability in the ice crystal number prior to the vortex phase, whereas $\frac{\mathcal{N}_{\text{tot},s}(\mathcal{N}_0)}{\mathcal{N}_{\text{tot},s}(\mathcal{N}_0^*)}$ describes the variability in the ice crystal number after the vortex phase. Since $1-\gamma$ ranges between 0 and 1, we can state that for fixed ambient conditions the vortex phase processes reduce the variability in the ice number generated by different fuel properties and various jet phase processes (different nucleation, fuel sulphur content, emission indices). Including the variation of the ambient conditions, the variability in $\mathcal{N}_{\text{tot},s}$ is clearly larger than in \mathcal{N}_0 , since $\mathcal{N}_{\text{tot},s}$ depends very sensitively on relative humidity and temperature.

4 Discussion

In the present study we investigated the consequences of using a detailed microphysical module (LCM) compared to a previously employed bulk approach (BM) on determining the crystal loss during the vortex phase of contrail evolution. Generally, stronger sensitivities to several parameters are found with the LCM compared to the bulk approach used in Unterstrasser et al. (2008). This aggravates the problem of accurately quantifying the fraction of surviving ice crystals. We attributed this to the differing microphysical treatment of the sublimation process on the fraction of surviving crystals.

But not only the environmental variables have to be constrained, also microphysical characteristics of the initial ice crystal population have to be well known. The detailed approach in the LCM discloses the sensitivity of the results on the width of the initial size distribution. This is a new finding, since the variability is not reproducible using the bulk approach. Initial differences in the actual number of crystals are damped.

Unfortunately, the typical width values of very young contrails are not precisely known and thus the uncertainty induced by this parameter can hardly be reduced at present. In-situ measurements less than 5 s behind an aircraft are generally rare (Petzold et al., 1997). Hence, statistics of typical size distributions are not available. Additionally, measurements of small crystals in young contrails are further affected by interference with

Contrail evolution during the vortex phase

S. Unterstrasser and
I. Sölch

Title Page

Abstract

Introduction

Conclusions

References

Tables

Figures

◀

▶

◀

▶

Back

Close

Full Screen / Esc

Printer-friendly Version

Interactive Discussion



and allowing to study the impact of the vortex phase processes in regional/global-scale models (GCM or Lagrangian plume models).

In order to validate our model results by observations, very precise measurements of temperature, relative humidity and the ice phase are necessary, considering the large sensitivities to these parameters. Moreover, in-situ measurements provide data of intensive properties along a certain path and rarely the whole plume is sampled. Our model approach, however, focuses on extensive properties like the total number of ice crystals which can be hardly derived from measurements. For this reason, we cannot decide which model yields a more realistic estimate of crystal loss. Nevertheless, the LCM-results seems to be more plausible in several aspects than the BM-results.

5 Conclusions

The existing contrail model of Unterstrasser et al. (2008) (BM) was upgraded with a detailed ice microphysics module (LCM) of (Sölch and Kärcher, 2010) using a Lagrangian particle tracking approach. The purpose of the present study was to reduce uncertainties in the quantitative description of ice phase properties of a contrail during the vortex phase, inherent to the bulk approach of UGS08.

Generally, the BM showed good agreement with observations of natural cirrus as several validation exercises have proven (Fusina and Spichtinger, 2010; Joos et al., 2009). However, in the present simulations of the contrail's vortex phase additional aircraft-triggered phenomena occur and the simulation problem is dominated by sublimation contrary to many natural or contrail-cirrus simulations which rely more heavily on deposition growth (and nucleation). We singled out the sublimation parametrisation in BM to be not sophisticated enough for our purpose. In LCM the sublimation process can be simulated directly and moreover the ice crystal size distributions can develop freely. Consequently, several aspects of the LCM-results are more plausible than in BM.

Contrail evolution during the vortex phase

S. Unterstrasser and
I. Sölch

Title Page

Abstract

Introduction

Conclusions

References

Tables

Figures



Back

Close

Full Screen / Esc

Printer-friendly Version

Interactive Discussion



Contrail evolution during the vortex phase

S. Unterstrasser and
I. Sölch

[Title Page](#)[Abstract](#)[Introduction](#)[Conclusions](#)[References](#)[Tables](#)[Figures](#)[Back](#)[Close](#)[Full Screen / Esc](#)[Printer-friendly Version](#)[Interactive Discussion](#)

It is the first time the contrail evolution was studied for a large humidity range from $RH_i = 100\%$ to 140% . Varying atmospheric and microphysical parameters we found that the new results qualitatively agree with Unterstrasser et al. (2008). The fractions of surviving ice crystals decreases with decreasing humidity, increasing temperature and higher initial crystal number. However, quantitative deviations between the two models occur. Especially for high supersaturations ($>130\%$) and cold temperatures the LCM barely prognoses any crystal loss, whereas in the BM at most 70% of the initial crystals survive. We attributed these differences to the sublimation parameterisation in the BM.

In the LCM the sublimation process is treated explicitly and a “sublimation tail” develops in the size distribution of the primary wake. This further enables us to study the impact of microphysical details of the initial size distribution on the contrail evolution. We showed that the width of the initial distribution has a non-negligible impact on the fraction of surviving crystals. Present knowledge from measurements and numerical studies are inadequate to determine the initial characteristics of SDs with required accuracy, increasing the uncertainty to quantify crystal loss in the vortex phase.

Furthermore, the more crystals are present initially, the smaller the fraction of surviving ice crystals is. The crystals are smaller on average and sublimate faster. A ten times higher initial number yields only 1.5 and 5.6 times higher number after the vortex phase for $RH_i^* = 105\%$ and 120% , respectively. Therefore, under identical meteorological conditions the variability in the initial ice crystal number (due to jet phase processes) is reduced during the vortex phase, especially for low supersaturation.

The evolution of ice crystals in the secondary wake is virtually not affected by the aircraft-induced dynamics and only controlled by the ambient conditions. The detrainment of crystals from the primary wake differs between the two model versions, due to the treatment of crystal transport. At most 15% of the initial crystals finally belong to the secondary wake in BM, in contrast to 7% in LCM. Both cases seem reasonable according to the 3-D-model study of Paugam et al. (2010).

Acknowledgements. The authors would like to thank K. Gierens and P. Spichtinger for valuable comments and the latter one also for providing the bulk microphysics model. This work contributes to the DLR/HGF-project “Climate-compatible air transport system” (CATS) and to the European Network of Excellence ECATS (Environmentally Compatible Air Transport System).
5 The simulations have been carried out at the ECMWF (special project “Ice-supersaturation and cirrus clouds”) and the DKRZ in Hamburg.

References

- Appleman, H.: The formation of exhaust condensation trails by jet aircraft, *B. Am. Meteorol. Soc.*, 34, 14–20, 1953. 14641
- 10 CIAP: The stratosphere perturbed by propulsion effluents, Monograph 3, US Dep. of Transport, Washington, DC, 1975. 14641
- Crow, S.: Stability theory for a pair of trailing vortices, *AIAA J.*, 8, 2172–2179, 1970. 14643
- Fusina, F. and Spichtinger, P.: Cirrus clouds triggered by radiation, a multiscale phenomenon, *Atmos. Chem. Phys. Discuss.*, 10, 1135–1166, doi:10.5194/acpd-10-1135-2010, 2010. 14645, 14659
- 15 Gierens, K.: The influence of radiation on the diffusional growth of ice crystals, *Beitr. Phys. Atmos.*, 67, 181–193, 1994. 14647
- Gierens, K. and Bretl, S.: Analytical treatment of ice sublimation and test of sublimation parameterisations in two-moment ice microphysics models, *Atmos. Chem. Phys.*, 9, 7481–7490, doi:10.5194/acp-9-7481-2009, 2009. 14645
- 20 Harrington, J., Meyers, M., Walko, R., and Cotton, W.: Parameterization of ice crystals conversion processes due to vapor deposition for mesoscale models using double-moment basis functions. I-Basic formulation and parcel model results, *J. Atmos. Sci.*, 52, 4344–4366, 1995. 14645
- 25 Heymsfield, A. and Iaquinta, J.: Cirrus crystal terminal velocities, *J. Atmos. Sci.*, 57, 916–938, 2000. 14645
- Hobbs, P.: The aggregation of ice particles in clouds and fogs at low temperatures, *J. Atmos. Sci.*, 22, 296–300, 1965. 14647
- Holzäpfel, F.: Probabilistic two-phase aircraft wake-vortex model: further development and
30 assessment, *J. Aircraft*, 43, 700–708, 2006. 14643, 14650, 14658, 14666

Contrail evolution during the vortex phase

S. Unterstrasser and
I. Sölch

Title Page

Abstract

Introduction

Conclusions

References

Tables

Figures

⏪

⏩

◀

▶

Back

Close

Full Screen / Esc

Printer-friendly Version

Interactive Discussion



Contrail evolution during the vortex phase

S. Unterstrasser and
I. Sölch

Title Page

Abstract

Introduction

Conclusions

References

Tables

Figures

⏪

⏩

◀

▶

Back

Close

Full Screen / Esc

Printer-friendly Version

Interactive Discussion

- Huebsch, W. and Lewellen, D.: Sensitivity Study on Contrail Evolution, 36th AIAA Fluid Dynamics Conference and Exhibit, AIAA J., 2006–3749, 2006. 14641, 14642, 14649
- Joos, H., Spichtinger, P., and Lohmann, U.: Orographic cirrus in a future climate, *Atmos. Chem. Phys.*, 9, 7825–7845, doi:10.5194/acp-9-7825-2009, 2009. 14645, 14659
- 5 Kärcher, B. and Yu, F.: Role of aircraft soot emissions in contrail formation, *Geophys. Res. Lett.*, 36, L01 804, doi:10.1029/2008GL036649, 2009. 14658
- Khain, A., Pinsky, M., Elperin, T., Kleeorin, N., Rogachevskii, I., and Kostinski, A.: Critical comments to results of investigations of drop collisions in turbulent clouds, *Atmos. Res.*, 86, 1–20, 2007. 14647
- 10 Lewellen, D. and Lewellen, W.: The effects of aircraft wake dynamics on contrail development, *J. Atmos. Sci.*, 58, 390–406, 2001. 14642, 14649
- Paugam, R., Paoli, R., and Cariolle, D.: Influence of vortex dynamics and atmospheric turbulence on the early evolution of a contrail, *Atmos. Chem. Phys.*, 10, 3933–3952, doi:10.5194/acp-10-3933-2010, 2010. 14642, 14658, 14660
- 15 Petzold, A., Busen, R., Schröder, F. P., Baumann, R., Kuhn, M., Ström, J., Hagen, D., Whitefield, P., Baumgardner, D., Arnold, F., Borrmann, S., and Schumann, U.: Near-field measurements on contrail properties from fuels with different sulfur content, *J. Geophys. Res.*, 102, 29867–29880, 1997. 14657
- Pinnick, R. and Auvermann, H.: Response characteristics of Knollenberg light-scattering aerosol counters, *J. Atmos. Sci.*, 10, 55–74, 1979. 14658
- 20 Pinsky, M., Khain, A., and Krugliak, H.: Collisions of cloud droplets in a turbulent flow. Part V: Application of detailed tables of turbulent collision rate enhancement to simulation of droplet spectra evolution, *J. Atmos. Sci.*, 65, 357–375, 2008. 14647
- Schmidt, E.: Die Entstehung von Eisnebel aus den Auspuffgasen von Flugmotoren, *Schrift. Deut. Akademie Luftfahrtforsch.*, 44, 1–15, 1941. 14641
- 25 Schumann, U.: On conditions for contrail formation from aircraft exhausts, *Meteorol. Z.*, NF, 5, 4–23, 1996. 14641
- Smolarkiewicz, P. and Margolin, L.: On Forward-in-Time Differencing for Fluids: an Eulerian/Semi-Lagrangian Non-Hydrostatic Model for Stratified Flows, *Numerical Methods in Atmospheric and Oceanic Modelling, The André J. Robert Memorial Volume*, Canadian Meteorological and Oceanographical Society, Ottawa, Canada, 127–152, 1997. 14643
- 30 Smolarkiewicz, P. and Margolin, L.: MPDATA: a finite-difference solver for geophysical flows, *J. Comput. Phys.*, 140, 459–480, 1998. 14643

**Contrail evolution
during the vortex
phase**S. Unterstrasser and
I. Sölch[Title Page](#)[Abstract](#)[Introduction](#)[Conclusions](#)[References](#)[Tables](#)[Figures](#)[⏪](#)[⏩](#)[◀](#)[▶](#)[Back](#)[Close](#)[Full Screen / Esc](#)[Printer-friendly Version](#)[Interactive Discussion](#)

- Sölch, I. and Kärcher, B.: A large eddy model for cirrus clouds with explicit aerosol and ice microphysics and Lagrangian ice particle tracking, submitted, Q. J. Roy. Meteorol. Soc., in review, 2010. 14646, 14647, 14659
- 5 Spichtinger, P. and Gierens, K. M.: Modelling of cirrus clouds – Part 1a: Model description and validation, Atmos. Chem. Phys., 9, 685–706, doi:10.5194/acp-9-685-2009, 2009. 14644
- Sussmann, R. and Gierens, K.: Lidar and numerical studies on the different evolution of vortex pair and secondary wake in young contrails, J. Geophys. Res., 104, 2131–2142, 1999. 14641
- Unterstrasser, S.: Numerische Simulationen von Kondensstreifen und deren Übergang in Zirkeln, Ph.D. thesis, LMU München, 2008. 14642, 14645
- 10 Unterstrasser, S. and Gierens, K.: Numerical simulations of contrail-to-cirrus transition – Part 1: An extensive parametric study, Atmos. Chem. Phys., 10, 2017–2036, doi:10.5194/acp-10-2017-2010, 2010a. 14641
14641, 14647
- Unterstrasser, S. and Gierens, K.: Numerical simulations of contrail-to-cirrus transition – Part
15 2: Impact of initial ice crystal number, radiation, stratification, secondary nucleation and layer depth, Atmos. Chem. Phys., 10, 2037–2051, doi:10.5194/acp-10-2037-2010, 2010b.
- Unterstrasser, S., Gierens, K., and Spichtinger, P.: The evolution of contrail microphysics in the vortex phase, Meteorol. Z., 17, 145–156, 2008. 14641, 14642, 14657, 14659, 14660

Table 1. Numerical, aircraft and atmospheric parameters. Brunt-Väisälä frequency N_{BV} , eddy dissipation rate ϵ , wing span b_{span} , aircraft mass M , cruise speed U , initial circulation of each vortex Γ_0 .

Numerical parameters			
$\Delta x, \Delta z$	1 m	Δt	0.01 s
L_x	256 m	L_z	500 m
T_{sim}	140 s		
Atmospheric parameters			
N_{BV}	10^{-2} s^{-1}	ϵ	$3.5 \times 10^{-5} \text{ m}^2/\text{s}^3$
ρ_0	250 hPa		
Aircraft parameters			
M	310 000 kg	b_{span}	60 m
U	250 m/s		
Vortex parameters			
Γ_0	$650 \text{ m}^2/\text{s}$	$t_{breakup}$	135 s
Microphysical parameters			
\mathcal{J}_0	$1.46 \times 10^{-2} \text{ kg}/\text{m}$	\mathcal{N}_0	$3.4 \times 10^{12} \text{ m}^{-1}$
$EI_{icecrystals}$	$2.4 \times 10^{-14} \text{ kg}^{-1}$	D_0	$2.3 \mu\text{m}$
σ_m	3.246	r	4

Contrail evolution during the vortex phase

S. Unterstrasser and
I. Sölch

Title Page

Abstract

Introduction

Conclusions

References

Tables

Figures

⏪

⏩

◀

▶

Back

Close

Full Screen / Esc

Printer-friendly Version

Interactive Discussion



Table 3. List of symbols and abbreviations.

Symbols	units	meaning/value
symbol		
\mathcal{J}_0	kg m^{-1}	initial ice mass per flight meter
\mathcal{J}_0^*	kg m^{-1}	default value of \mathcal{J}_0 : $1.46 \times 10^{-2} \text{ kg m}^{-1}$
\mathcal{N}_0	m^{-1}	initial ice crystal number per flight meter
\mathcal{N}_0^*	m^{-1}	default value of \mathcal{N}_0 : $3.4 \times 10^{12} \text{ m}^{-1}$
$\mathcal{N}_{\text{tot}}, \mathcal{N}_{\text{prim}}, \mathcal{N}_{\text{sec}}$	m^{-1}	number of crystals per flight meter in the total, primary and secondary wake, respectively
$\mathcal{J}_{\text{tot}}, \mathcal{J}_{\text{prim}}, \mathcal{J}_{\text{sec}}$	kg m^{-1}	crystal mass per flight meter in the total, primary and secondary wake, respectively
N	m^{-3}	ice crystal number concentration
IWC	kg m^{-3}	ice water content
$f_{N,\#}, f_{\mathcal{J},\#}$		normalised ice crystal number/mass, see Eq. (7)
$f_{N,\#,s}, f_{\mathcal{J},\#,s}$		$f_{N,\#}$ and $f_{\mathcal{J},\#}$ evaluated at $t = t_{\text{breakup}}$
f_n		fractional reduction of ice crystal number per timestep in the bulk model
f_m		fractional reduction of ice mass per timestep in the bulk model
r		width parameter of the lognormal mass distribution
r^*	4	default value of r
m_0	kg	median mass
\bar{m}	kg	mean mass
RH_i		relative humidity
RH_i^*		ambient relative humidity (simulation parameter)
s_i		supersaturation $\text{RH}_i - 100\%$
T^*	K	temperature at cruise altitude (simulation parameter)
β_s		scaling factor of $\mathcal{N}_0 = \beta_s \times \mathcal{N}_0^*$
t_{breakup}	s	breakup time of the vortex pair following Holzäpfel (2006)
Δt	0.01 s	timestep
ρ_{ice}		density of ice crystals
Abbreviations		
LCM		Lagrangian cirrus module or contrail model equipped with it
BM		Bulk microphysics module or contrail model equipped with it
SD		Ice crystal size distribution
ISD		Initial ice crystal size distribution
SIP		Simulation ice particle

Contrail evolution during the vortex phase

S. Unterstrasser and
I. Sölch

Title Page

Abstract

Introduction

Conclusions

References

Tables

Figures

◀

▶

◀

▶

Back

Close

Full Screen / Esc

Printer-friendly Version

Interactive Discussion

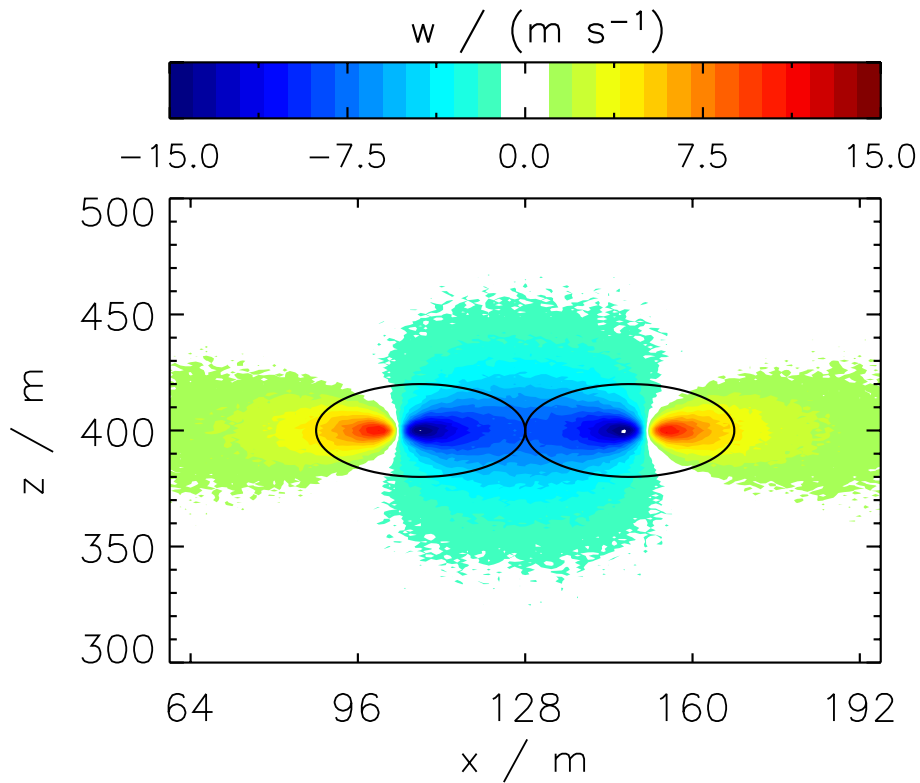


Fig. 1. Initial vertical velocity w in the x - z -plane containing two vortices with a Hallock-Burnham radial profile of tangential velocity. The ice crystals are initialised inside the two black circles.

Contrail evolution during the vortex phase

S. Unterstrasser and I. Sölch

Title Page

Abstract Introduction

Conclusions References

Tables Figures

⏪ ⏩

◀ ▶

Back Close

Full Screen / Esc

Printer-friendly Version

Interactive Discussion



Contrail evolution during the vortex phase

S. Unterstrasser and
I. Sölch

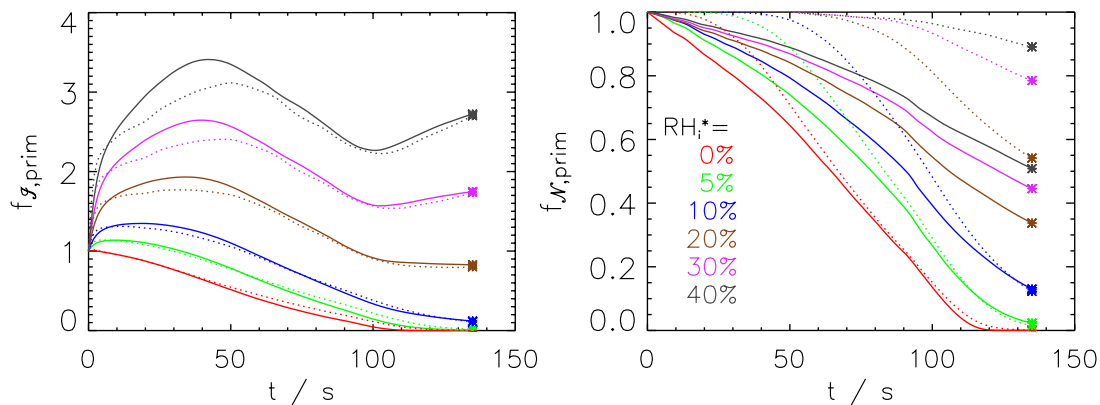


Fig. 2. Temporal evolution of the fraction of ice crystal mass $f_{J,prim}$ (left) and number $f_{N,prim}$ (right) in the primary wake for various relative humidities ϵ [100%, 140%] (see legend). The solid lines show the BM-results, the dotted lines the LCM-results.

[Title Page](#)
[Abstract](#)
[Introduction](#)
[Conclusions](#)
[References](#)
[Tables](#)
[Figures](#)
[◀](#)
[▶](#)
[◀](#)
[▶](#)
[Back](#)
[Close](#)
[Full Screen / Esc](#)
[Printer-friendly Version](#)
[Interactive Discussion](#)

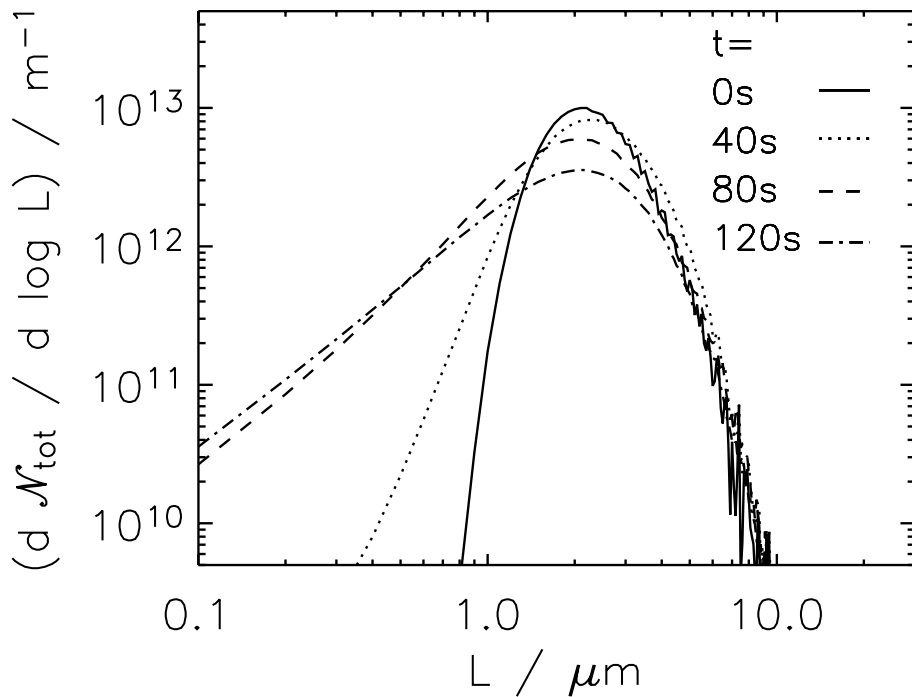


Fig. 3. Size distribution inside the primary wake for $T^* = 217 \text{ K}$ and $\text{RH}_i^* = 120\%$ at various times (see legend). The size distribution is given in units “per meter of flight path”, not “per m^3 ”.

Contrail evolution during the vortex phase

S. Unterstrasser and I. Sölch

Title Page

Abstract

Introduction

Conclusions

References

Tables

Figures

◀

▶

◀

▶

Back

Close

Full Screen / Esc

Printer-friendly Version

Interactive Discussion

Contrail evolution during the vortex phase

S. Unterstrasser and I. Sölch

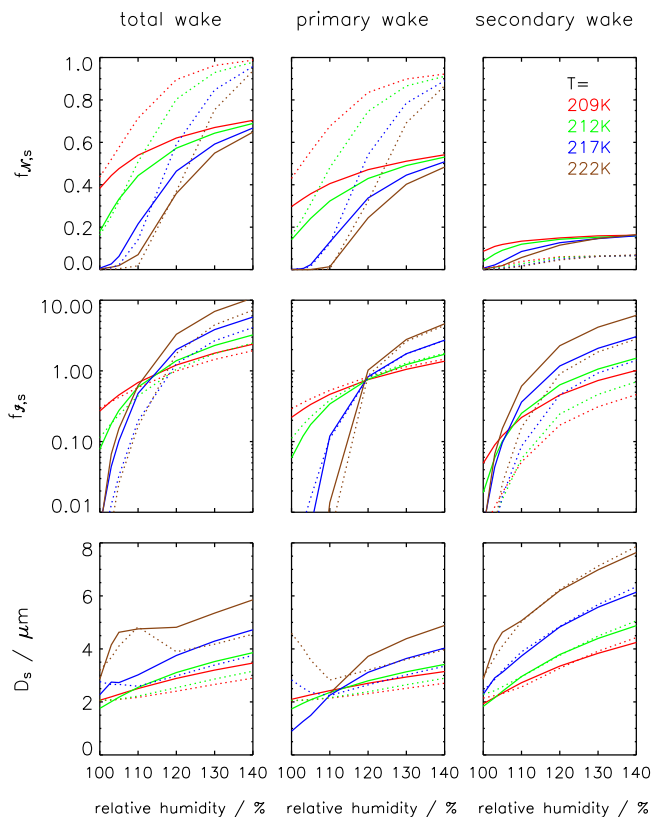


Fig. 4. Fraction of surviving ice crystal number $f_{N,s}$ (top) and mass $f_{J,s}$ (middle) as well as the mean diameter D_s (bottom) as a function of relative humidity. The results of BM and LCM have solid and dotted lines, respectively. The colour denotes the temperature T^* : 209 K (red), 212 K (green), 217 K (blue) and 222 K (brown). The three columns show the values for the total, primary and secondary wake, respectively.

Title Page

Abstract Introduction

Conclusions References

Tables Figures

◀ ▶

◀ ▶

Back Close

Full Screen / Esc

Printer-friendly Version

Interactive Discussion



Contrail evolution during the vortex phase

S. Unterstrasser and
I. Sölch

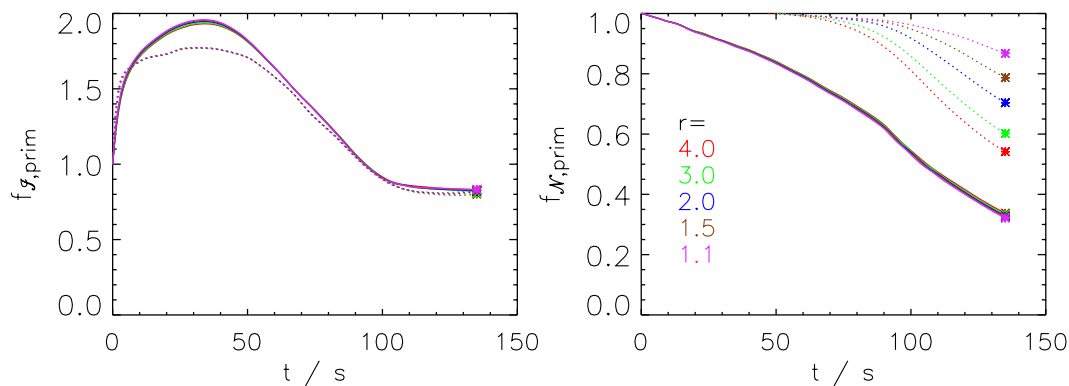


Fig. 5. Temporal evolution of the fraction of ice crystal mass $f_{\mathcal{J},\text{prim}}$ (left) and number $f_{\mathcal{N},\text{prim}}$ (right) in the primary wake for various widths r of the initial size distribution (see legend) for $T^* = 217 \text{ K}$ and $\text{RH}_i^* = 120\%$.

[Title Page](#)
[Abstract](#)
[Introduction](#)
[Conclusions](#)
[References](#)
[Tables](#)
[Figures](#)
[⏪](#)
[⏩](#)
[◀](#)
[▶](#)
[Back](#)
[Close](#)
[Full Screen / Esc](#)
[Printer-friendly Version](#)
[Interactive Discussion](#)


Contrail evolution during the vortex phase

S. Unterstrasser and
I. Sölch

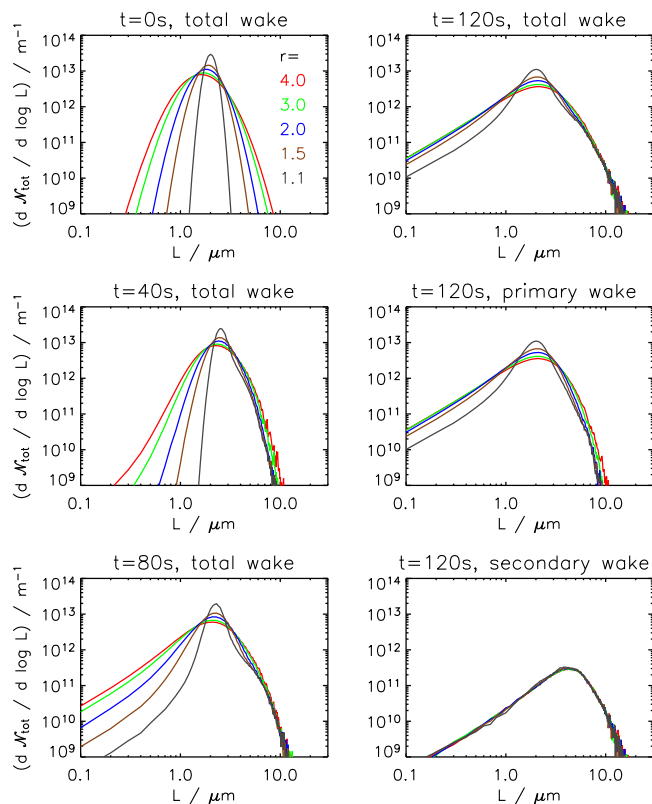


Fig. 6. Size distributions for various widths r of the initial size distribution (see legend) for the LCM-model at $T^*=217$ K and $RH_i^*=120\%$. The time of evaluation and the sampling area is given on top of each plot.

[Title Page](#)
[Abstract](#)
[Introduction](#)
[Conclusions](#)
[References](#)
[Tables](#)
[Figures](#)
[⏪](#)
[⏩](#)
[◀](#)
[▶](#)
[Back](#)
[Close](#)
[Full Screen / Esc](#)
[Printer-friendly Version](#)
[Interactive Discussion](#)

Contrail evolution during the vortex phase

S. Unterstrasser and
I. Sölch

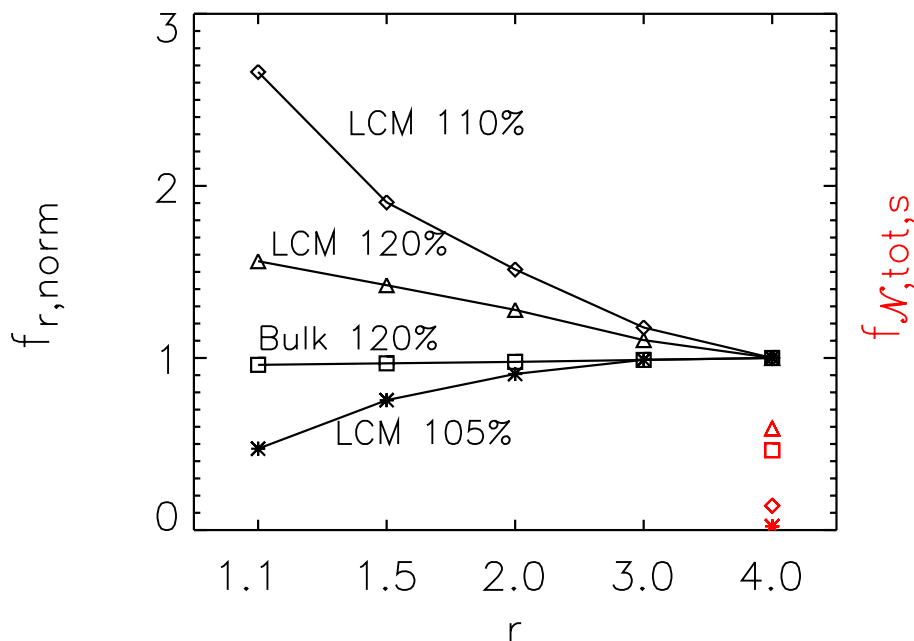


Fig. 7. Sensitivity function $f_{r,norm}(r)$ (see Eq. 9). The labels in the figure denote the relative humidity and the employed microphysics model for each curve. The temperature is $T^* = 217$ K. The symbols show the scaling factors $f_{N,tot,s}(r^*)$ of the corresponding curves. LCM 105%: star; LCM 110%: diamond; LCM 120%: triangle; BM 120%: square.

Title Page

Abstract

Introduction

Conclusions

References

Tables

Figures

◀

▶

◀

▶

Back

Close

Full Screen / Esc

Printer-friendly Version

Interactive Discussion

Contrail evolution during the vortex phase

S. Unterstrasser and
I. Sölch

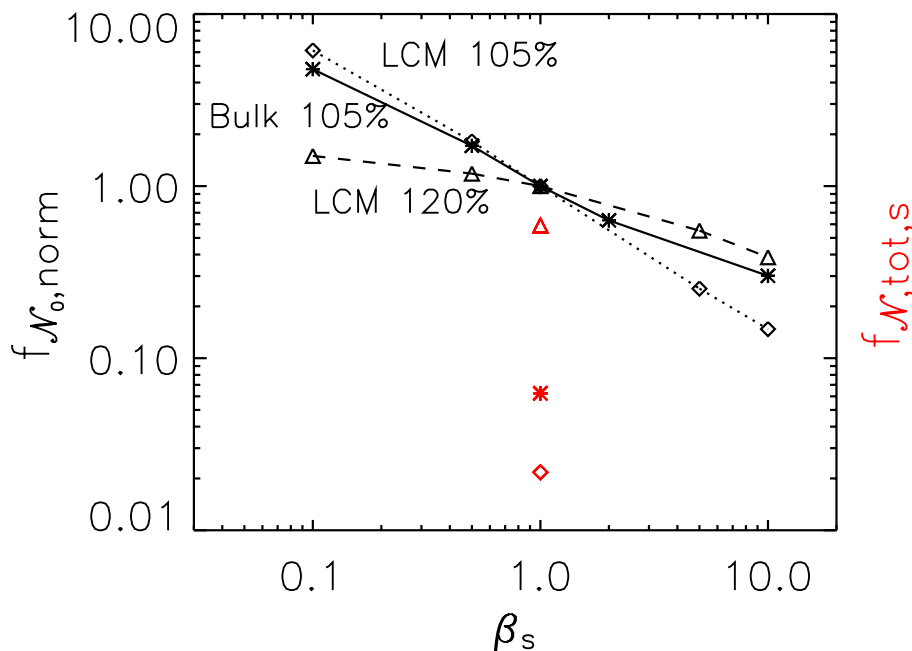


Fig. 8. Sensitivity function $f_{\mathcal{N}_0, \text{norm}}(r)$ (see Eq. 10). The labels in the figure denote the relative humidity and the employed microphysics model for each curve. The temperature is $T^* = 217$ K. The symbols show the scaling factors $f_{\mathcal{N}, \text{tot}, s}(\mathcal{N}_0^*)$ of the corresponding curves. LCM 105%: diamond; BM 105%: star; LCM 120%: triangle.

Title Page

Abstract

Introduction

Conclusions

References

Tables

Figures

◀

▶

◀

▶

Back

Close

Full Screen / Esc

Printer-friendly Version

Interactive Discussion