

This discussion paper is/has been under review for the journal Atmospheric Chemistry and Physics (ACP). Please refer to the corresponding final paper in ACP if available.

# Seasonal variability of aerosol optical properties observed by means of an elastic-Raman lidar over Northeastern Spain

M. Sicard<sup>1</sup>, M. N. M. Reba<sup>1</sup>, F. Rocadenbosch<sup>1</sup>, A. Comerón<sup>2</sup>, S. Tomás<sup>1</sup>,  
D. García-Vízcaíno<sup>2</sup>, O. Batet<sup>2</sup>, R. Barrios<sup>2</sup>, and D. Kumar<sup>2</sup>

<sup>1</sup>Dept. of Signal Theory and Communications, Remote Sensing Lab., Universitat Politècnica de Catalunya/Institut d'Estudis Espacials de Catalunya, Barcelona, Spain

<sup>2</sup>Dept. of Signal Theory and Communications, Remote Sensing Lab., Universitat Politècnica de Catalunya, Barcelona, Spain

Received: 4 May 2010 – Accepted: 25 May 2010 – Published: 8 June 2010

Correspondence to: M. Sicard (msicard@tsc.upc.edu)

Published by Copernicus Publications on behalf of the European Geosciences Union.

## Seasonal variability of aerosol optical properties

M. Sicard et al.

Title Page

Abstract

Introduction

Conclusions

References

Tables

Figures

◀

▶

◀

▶

Back

Close

Full Screen / Esc

Printer-friendly Version

Interactive Discussion



## Abstract

The annual and seasonal variability of aerosol optical properties observed by means of an elastic-Raman lidar over Northeastern Spain has been assessed. The lidar representativeness has first been checked against sun-photometer measurements in terms of aerosol optical thickness. Then the annual cycle and the seasonal variability of the planetary boundary layer aerosol optical thickness and its fraction compared to the columnar optical thickness, the lidar ratio, the backscatter-related Ångström exponent and the planetary boundary layer height have been analyzed and discussed. Winter and summer mean profiles of extinction, backscatter and lidar ratio retrieved with the Raman algorithm have been presented. The analysis shows the impact of most of the natural events (Saharan dust intrusions, wildfires, etc.) and meteorological situations (summer anticyclonic situation, the formation of the Iberian thermal low, winter long-range transport from North Europe and/or North America, re-circulation flows, etc.) occurring in the Barcelona area. A detail study of a special event including a combined intrusion of Saharan dust and biomass-burning particles has proven the suitability of combining nighttime Raman- and daytime pure elastic-inversions to discriminate spatially different types of aerosols and to follow their spatial and temporal evolution.

## 1 Introduction

Atmospheric aerosols that originate from both natural and anthropogenic activities play a major role in local and global climate and weather changes. Aerosols significantly affect the Earth radiative budget when they interact with the solar radiation and the Earth's long-wave radiation. To this extent, the Intergovernmental Panel on Climate Change (IPPC) has stated that the aerosols considerably contribute to the uncertainty associated to the future global climate predictions (Forster et al., 2007). The assessment of their impact on the Earth radiative budget has been discussed for years and eventually requires an ever increasing knowledge of their characteristics and of their

## Seasonal variability of aerosol optical properties

M. Sicard et al.

Title Page

Abstract

Introduction

Conclusions

References

Tables

Figures



Back

Close

Full Screen / Esc

Printer-friendly Version

Interactive Discussion



temporal and spatial distribution.

In Europe, one of the most serious air quality problems is related to particulate matter (PM) with a diameter under  $10\ \mu\text{m}$  ( $\text{PM}_{10}$ ) (De Leeuw et al., 2001). The objectives proposed by the European Union (EU) related to air quality for year 2010 are more difficultly reached in Southern Europe around the Mediterranean Basin than in Northern Europe. The global aerosol model AEROCOM (Aerosol interComparison) shows that the aerosol mass load in the Western Mediterranean Basin (WMB) is among the highest in the world, contributing substantially to the climate radiative forcing (Textor et al., 2006). Over Eastern Spain, Rodríguez (2002a) yielded annual mean  $\text{PM}_{10}$  levels of 17–20, 30–45 and 45–60  $\mu\text{g}\text{m}^{-3}$  at rural, urban and industrial sites, respectively, outlining that even  $\text{PM}_{10}$  rural levels were only slightly lower than the 2010 EU  $\text{PM}_{10}$  objectives for urban and industrial sites. Several reasons explain such behaviors in the WMB.

The WMB is surrounded by high coastal mountains and in summer it becomes isolated from the traveling lows and their frontal systems, which affect the weather at higher latitudes. The meteorology is highly influenced by the Azores high-pressure system, which is located over the Atlantic Ocean and which intensifies during the warm season inducing very weak pressure gradient conditions all over the region. Precipitations are poor and irregular. Under weak synoptic forcing, air-mass coastal recirculations become “large natural photo-chemical reactors” where secondary aerosols are formed in large quantities (Beck et al., 1999). In addition, the contribution of mineral aerosols is very high due to the poor vegetable soil coverage and the frequent occurrence of Saharan dust events (Rodríguez et al., 2001). Re-suspension of loose material on the road surface may also significantly contribute to  $\text{PM}_{10}$  levels in the dry season. According to Rodríguez et al. (2002a), at rural sites over Eastern Spain, the highest PM events are reported during Saharan dust events (daily concentrations 40–60  $\mu\text{g}\text{m}^{-3}$ ) and the second highest PM events (daily concentrations 20–45  $\mu\text{g}\text{m}^{-3}$ ) are reported during ozone-related pollution episodes. The relief of the continental areas in the WMB contributes to the complexity of the dispersion of the aerosols in the

## Seasonal variability of aerosol optical properties

M. Sicard et al.

Title Page

Abstract

Introduction

Conclusions

References

Tables

Figures

◀

▶

◀

▶

Back

Close

Full Screen / Esc

Printer-friendly Version

Interactive Discussion



region. The presence of highly urbanized coastlines poses significant problems for understanding, monitoring and forecasting the transport and dispersion of the aerosols in the atmosphere which have been the subject of many studies (Millán et al., 1992, 1997; Jiménez et al., 2006).

5 In Northeastern Spain, Barcelona and its surroundings are one of the largest urban coastal areas of the WMB. Due to the reasons mentioned above, the variability in concentration, size, shape, composition and vertical distribution of the atmospheric aerosols in this area is very high. Consequently, global aerosol models and radiative transfer models still suffer from large uncertainties when applied to this region. Long-  
10 term observations of aerosol vertical profiles are a key point to reduce them. The lidar technique provides vertical profiles of the aerosol optical properties with a high vertical and temporal resolution, in particular the Raman technique is the most suitable technique for ground-based aerosol study because it allows to characterize atmospheric aerosols in terms of vertical profiles of extinction and backscatter coefficients without  
15 any assumptions on the aerosol type and composition (Ansmann et al., 1992).

The European Aerosol Research Lidar Network (EARLINET) established since 2000 provides a comprehensive, quantitative, and statistically significant database of the atmospheric aerosol vertical distribution at a continental scale using a network of advanced lidar stations (Bösenberg et al., 2002). Since March 2006 the network is supported by the EU through the project EARLINET-ASOS (European Aerosol Research Lidar Network to establish an aerosol climatology – Advanced Sustainable Observation System) (Pappalardo et al., 2007). In the framework of this project the Barcelona lidar station from the Remote Sensing Laboratory (RSLAB) of the Universitat Politècnica de Catalunya (UPC) has been performing observations of atmospheric aerosols on a regular basis. Thus, this paper deals with the climatology of the aerosol optical properties such as optical thickness, lidar ratio, Ångström exponent and planetary boundary layer height measured by lidar in Barcelona over three full years 2007–2009. Section 2 presents the instrumentation and methodology. In order to demonstrate the representativeness of the lidar measurements the latter are compared on a statistical basis with  
25

## Seasonal variability of aerosol optical properties

M. Sicard et al.

Title Page

Abstract

Introduction

Conclusions

References

Tables

Figures

◀

▶

◀

▶

Back

Close

Full Screen / Esc

Printer-friendly Version

Interactive Discussion



sun-photometer data in terms of aerosol optical thickness. This validation is presented in Sect. 3.1. Next in Sect. 3.2, the climatology of the lidar ratio, Ångström exponent and planetary boundary layer height is presented. Seasonal mean vertical profiles of lidar ratio are discussed in Sect. 3.3 and finally a special emphasis is made on special events in Sect. 3.4.

## 2 Instrumentation and methodology

### 2.1 Sun-sky photometer

The columnar aerosol optical thickness (AOT) was measured by a CIMEL sun-sky photometer, which is part of the Aerosol Robotic Network (AERONET) (Holben et al., 1998). The sun-photometer is located on the roof of one of the buildings of the UPC in Barcelona, Spain, in an urban area (41.38° N, 2.11° E, 125 m a.s.l.). The instrument makes direct sun measurements with a 1.2°-field of view, in the spectral bands of 440, 675, 870, 940 and 1020 nm. Taking into account all the information about the instrument precision, calibration precision and data accuracy (Holben et al., 1998), the estimated accuracy of the AOT measurements to be presented next is about  $\pm 0.02$  for the level 2 data (cloud-screened and quality-assured) which are used in this paper. In this work and for the period between 1 January 2007–31 December 2009, two types of values have been used: punctual values for constraining the lidar inversion, the temporal coincidence between the lidar and the sun-photometer measurement being less than  $\pm 30$  min, and daily averaged values for the AOT seasonal variability analysis (Sect. 3.1).

The AOT at the lidar wavelengths of 532 and 1064 nm were computed from the sun-photometer AOT at 440 and 1020 nm, respectively. Both AOTs were corrected for the AOT spectral dependence using the Ångström exponent ( $AE_{sp}$ ) calculated between 440 and 675 nm and between 870 and 1020 nm, respectively. In both regions the sun-

## Seasonal variability of aerosol optical properties

M. Sicard et al.

Title Page

Abstract

Introduction

Conclusions

References

Tables

Figures



Back

Close

Full Screen / Esc

Printer-friendly Version

Interactive Discussion



photometer  $AE_{sp}$  was calculated as follows:

$$AE_{sp} = - \frac{\ln \left[ \frac{AOT(\lambda_1)}{AOT(\lambda_2)} \right]}{\ln \left[ \frac{\lambda_1}{\lambda_2} \right]} \quad (1)$$

## 2.2 Barcelona lidar

The lidar group from the RSLAB has developed in 2002 a transportable and steerable elastic-Raman lidar system (Rocadenbosch et al., 2002) which has been operated so far. The lidar is located on the roof of one of the buildings of the Department of Signal Theory and Communications (41.39° N, 2.11° E, 115 m a.s.l.) of the UPC at approximately 600 m Northwest of the CIMEL sun-photometer. The present lidar system is based on a Nd:YAG laser operating at the fundamental and second harmonic wavelengths of 1064 and 532 nm, respectively, and transmitting pulses of 160-mJ energy at a repetition rate of 20 Hz. The receiver consists of a Cassegrain telescope in a biaxial arrangement. The received radiation is separated into three channels using dichroic filters. Interference filters are used to spectrally select the elastic backscattered radiation at 1064 and 532 nm, and the nitrogen Raman-shifted backscattered radiation at 607 nm. Photomultiplier tubes are used at 532 and 607 nm while an avalanche photodiode is used at 1064 nm. The signals at 532 and 1064 nm are sampled in an analog mode while at 607 nm both analog and photon counting signals are simultaneously recorded.

During daytime, the aerosol optical coefficient profiles (backscatter and extinction) were retrieved by means of the two-component elastic lidar inversion algorithm (Fernald, 1984; Sasano and Nakane, 1984; Klett, 1985) constrained with the sun-photometer-derived AOT (Landulfo et al., 2007; Reba et al., 2010a). The method is based on an iterative lidar ratio (LR) search by comparing the lidar AOT with that from the sun-photometer using a bisection-search method and a lidar ratio termination error goal,  $\varepsilon$ , set by the user (Reba et al., 2010a). Here  $\varepsilon$  was fixed to 1 sr.

### Seasonal variability of aerosol optical properties

M. Sicard et al.

Title Page

Abstract

Introduction

Conclusions

References

Tables

Figures

◀

▶

◀

▶

Back

Close

Full Screen / Esc

Printer-friendly Version

Interactive Discussion



## Seasonal variability of aerosol optical properties

M. Sicard et al.

Title Page

Abstract

Introduction

Conclusions

References

Tables

Figures

◀

▶

◀

▶

Back

Close

Full Screen / Esc

Printer-friendly Version

Interactive Discussion



Most of the nighttime measurements at 532 nm were inverted with the Raman lidar inversion algorithm (Ansmann et al., 1990). In some of the nighttime measurements acquired at sunset the Raman channel was not recorded and therefore the inversions at 532 nm were made with the two-component elastic lidar algorithm using a constant LR of 50 sr. All nighttime measurements at 1064 nm were inverted in the same way with the two-component elastic lidar algorithm.

The lidar-derived AOT was measured by integrating the aerosol extinction coefficient profile from the minimum height of confidence, usually between 400 and 500 m a.g.l., and up to the free troposphere. For the first part of the PBL, which is not “seen” by the lidar because of its incomplete overlap factor, the extinction was assumed to be a flat extrapolation of the extinction profile at the range of full overlap (Reba et al., 2010a).

The retrieval of the planetary boundary layer (PBL) height was made using the gradient method (Sicard et al., 2006). All profiles were visually inspected and the resulting PBL height was cross-compared with the previous and the following height in order to guarantee temporal coherency in its evolution. The PBL heights retrieved from both the 532- and the 1064-nm lidar signals give exactly the same results.

Since March 2006, the UPC lidar is involved in regular measurements scheduled within EARLINET-ASOS (Pappalardo et al., 2007). Three measurements a week are scheduled: on Monday at 14:00 LST (local solar time)  $\pm 1$  h and at sunset  $-2$  h  $+3$  h and on Thursday at sunset  $-2$  h  $+3$  h. All those measurements were processed as daytime measurements except for some sunset measurements which were performed after dark (most of them in winter time). When the Raman channel was recorded, those sunset measurements were processed with the Raman algorithm.

Also in the framework of EARLINET-ASOS a Saharan dust alert system has been established in order to perform ad-hoc measurements in case of intrusions of desert particles over the European continent (Pappalardo et al., 2009). Dust forecasts are distributed to all EARLINET stations by the National Technical University of Athens (NTUA) group, which coordinates the monitoring of the dust outbreaks within the network. The dust forecast is based on the operational outputs (aerosol dust load) of the



**Seasonal variability  
of aerosol optical  
properties**

M. Sicard et al.

[Title Page](#)[Abstract](#)[Introduction](#)[Conclusions](#)[References](#)[Tables](#)[Figures](#)[⏪](#)[⏩](#)[◀](#)[▶](#)[Back](#)[Close](#)[Full Screen / Esc](#)[Printer-friendly Version](#)[Interactive Discussion](#)

DREAM (Nickovic et al., 2001) (Dust Regional Atmospheric Model, operated in the past in Malta at the Centre on Insular Coastal Dynamics and now at the Barcelona Supercomputing Center, Barcelona, Spain: <http://www.bsc.es/projects/earthscience/DREAM/>) and the SKIRON (Kallos et al., 1997) (operated at NTUA, Greece: <http://forecast.uoa.gr>) models. Alerts are issued 24 to 36 h prior to the arrival of dust aerosols over the EARLINET sites, so that each participating station can arrange special measurements. For both measurement types (regular and Saharan dust alerts) the typical averaging time is 30 min.

As a member of EARLINET, the UPC lidar is also involved since June 2006 in the CAL/VAL exercise of the CALIOP (Cloud-Aerosol Lidar with Orthogonal Polarization) lidar flying on board CALIPSO (Cloud-Aerosol Lidar and Infrared Pathfinder Satellite Observations) (Winker et al., 2007). CALIOP is an elastic backscatter lidar that provides vertical profiles of aerosol and cloud backscatter coefficients at 532 and 1064 nm and depolarization ratio profiles at 532 nm. 150-min measurements are performed each time CALIPSO overpasses the UPC site within a maximum distance of 100 km and 2 h (Case 1) or when the nearest EARLINET station (Case 2) or the nearest multi-wavelength EARLINET station (Case 3) performs measurements in coincidence with CALIPSO overpasses (Mattis et al., 2007).

Table 1 shows the number of measurements satisfactorily inverted for each type described above during the period 2007–2009. Those numbers do not reflect the number of measurements performed indeed but the number of quality-assured inversions obtained from the measurements performed. As an example, in the period 2007–2009, 462 regular measurements were scheduled, 199 (43%) were performed and out of those 199 measurements 84 (42%) inversions were satisfactorily obtained. The reasons for not performing the measurements are the presence of low clouds or rain, technical problems, system upgrading/reparation/maintenance, manpower shortage and field campaigns outside of Barcelona (Reba, 2010b). The inversions were not quality-assured when no sun-photometer AOT was available or when the lidar signal showed too poor quality (presence of an artificial signature due to noise interferences, detector



saturation, too low signal-to-noise ratio, etc.). During the same period approximately 20 Saharan dust measurements were inverted satisfactorily and a total of 47 CALIPSO measurements regardless of the Case number were also inverted satisfactorily.

### 3 Results and discussion

The data presented here were obtained in Barcelona, Spain, by both a CIMEL sun-photometer and the UPC lidar over a period of three years between 1 January 2007 and 31 December 2009. A total of 151 lidar inversions are available, 106 during daytime and 45 during nighttime. The daytime measurements are first used to demonstrate the representativeness of the lidar measurements to reliably reproduce the annual evolution of the aerosol optical properties by comparing sun-photometer and lidar AOT on a statistical basis. Once data representativeness is demonstrated, the annual cycle of the lidar ratio, the backscatter-related Ångström exponent and the PBL height are analyzed and discussed, as well as mean vertical profiles of lidar ratio retrieved with the Raman algorithm. Finally, a special event is analysed in Sect. 3.4.

In Sect. 3.1 where the lidar-derived AOT is compared to that of the sun-photometer the monthly mean estimates and their mean errorbar are computed as the arithmetic mean values and the standard deviation, respectively. This way the errorbar gives an estimation of the variability of the single values around the mean value. In Sect. 3.2, since the single values came with an associated errorbar, the monthly mean estimates and their mean errorbar are computed using the maximum likelihood (ML) estimation described in Appendix A. This way the monthly mean estimate represents a weighted mean value and its errorbar gives the degree of confidence of that mean value. The variability of the single values around the mean value is shown by means of probability density function plots. The annual and seasonal (winter and summer) mean estimates given in Table 2 were all computed from the monthly mean estimates and their mean errorbar using the ML estimation.

## Seasonal variability of aerosol optical properties

M. Sicard et al.

Title Page

Abstract

Introduction

Conclusions

References

Tables

Figures

◀

▶

◀

▶

Back

Close

Full Screen / Esc

Printer-friendly Version

Interactive Discussion



### 3.1 AOT seasonal variability

Figures 1 and 2 are intended to show on a statistical basis the representativeness of the lidar measurements. This is achieved by comparing the probability density function (PDF) and annual cycle of the AOT retrieved from both the daytime lidar measurements and the daily sun-photometer data. Figure 1 shows the sun-photometer- and lidar-derived AOT PDF for winter and summer at 532 and 1064 nm. The AOT range for each bar is 0.05. Winters and summers have been defined from October to March and from April to September, respectively. Even though some AOT values as high as 1 were measured, Fig. 1a and b were intentionally cut at 0.4 below which more than 90% of AOT values fall. At both wavelengths and during both seasons the PDFs from both instruments are quite similar. The agreement between both instruments is remarkably good during summer. Figure 2a and b show the annual cycle of both AOTs at 532 and 1064 nm, respectively. The errorbar associated with the monthly mean value is the standard deviation. By using the ML estimation described in Appendix A, annual and seasonal mean values were computed. The lidar-derived annual mean AOT is  $0.14 \pm 0.02$  and  $0.07 \pm 0.01$  at 532 and 1064 nm, respectively, whereas the winter and summer mean values are  $0.10 \pm 0.03$  and  $0.20 \pm 0.03$  at 532 nm and  $0.05 \pm 0.01$  and  $0.09 \pm 0.02$  at 1064 nm. The differences between winter and summer mean values are mainly due to long-range transport aerosols such as Saharan dust (more frequent in summer than in winter) and biomass burning particles (not present in winter). In both seasons Fig. 1a and b show that a non-negligible number of cases with relatively high AOTs, let's say above 0.3 at 532 nm and above 0.15 at 1064 nm, are observed. This result evidences the presence of Saharan dust in all seasons. However in winter those episodes with high AOTs do not have a significant impact on the mean seasonal AOT value: even though the cumulative PDFs of high AOTs are relatively high ( $\text{PDF}(\text{AOT}_{532} > 0.3) \approx 0.2$  and  $\text{PDF}(\text{AOT}_{1064} > 0.15) \approx 0.25$ ), the winter mean AOTs are low: 0.10 at 532 nm and 0.05 at 1064 nm. The presence of Saharan dust all year round was expected since during the winter months Saharan dust intrusions

## Seasonal variability of aerosol optical properties

M. Sicard et al.

Title Page

Abstract

Introduction

Conclusions

References

Tables

Figures

◀

▶

◀

▶

Back

Close

Full Screen / Esc

Printer-friendly Version

Interactive Discussion



(the main contributor to the increase of the mean annual AOT in Northeastern Spain), occur approximately as many times as during July and August (Rodríguez et al., 2001, 2002b; Querol et al., 2002). In the cases of relatively high AOTs the agreement between both instruments is usually not so good. It emerges that the PDF of the AOT in summer follows a Gaussian-like distribution centered around  $\sim 0.2$  and  $\sim 0.1$  at 532 and 1064 nm, respectively. Both Fig. 2a and b show qualitatively and quantitatively a good agreement between both instruments. In spite of a statistically lower number of lidar measurements the variability of the monthly AOTs (given by the errorbar) is similar for both instruments. This result reinforces the representativeness of the lidar measurements since it indicates that the monthly set of lidar-derived AOTs span a similar range of values to that of the sun-photometer-derived AOTs. The difference between sun-photometer and lidar seasonal mean AOTs is lower than 0.03 at 532 nm and lower than 0.02 at 1064 nm in winter while it is lower than 0.01 at both wavelengths in summer. The agreement between both instruments is relatively good even though some discrepancies are observed in winter. Those discrepancies are visible in Fig. 2a and Fig. 2b especially in December, January and February. They are due to a lesser number of lidar measurements (which causes the errorbars not to be representative of the statistical sample) due to either bad weather or a lack of sun-photometer measurements, sunset measurements being performed at nighttime during these months of the year. The difference between the monthly AOTs of both instruments at 532 nm is in average 6.4% in summer and 19% in winter (7% if we exclude the months of December, January and February). At 1064 nm it is 10.2% in summer and 22.2% in winter (7.4% if we exclude the months of December, January and February). If we exclude those three months one can say that the lidar and the sun-photometer AOT annual cycles agree well and that differences do not exceed  $\sim 10\%$ .

Figure 3 shows the columnar AOT and the AOT inside the PBL, both measured by the lidar. The columnar AOT is the same as the solid line shown in Fig. 2. The PBL AOT was obtained by integrating the extinction profiles from the ground level up to the PBL height (and using the extinction extrapolation discussed in Sect. 2.2). The errorbar

## Seasonal variability of aerosol optical properties

M. Sicard et al.

Title Page

Abstract

Introduction

Conclusions

References

Tables

Figures

◀

▶

◀

▶

Back

Close

Full Screen / Esc

Printer-friendly Version

Interactive Discussion



associated with the monthly mean value is the standard deviation. Three interesting features stand out of

Figure 3:

- The columnar AOT is always larger than the PBL AOT, which indicates that aerosol layers are detected above the PBL all year round (except in December, January and February where both AOTs are nearly equal). The fact that the PBL AOT does not increase in summer is also partially due to the sea-breeze phenomenon which produces a stronger “clean up” effect in summer than in winter (Santacesaria et al., 1998).
- The PBL AOT is virtually constant all year round. The annual mean value computed with the ML estimation described in Appendix A is around  $0.08 \pm 0.01$  at 532 nm and around  $0.03 \pm 0.01$  at 1064 nm, which represents 57 and 43% of the annual mean columnar AOT, respectively. This is a very interesting result because it shows that no systematic coupling exists between the PBL and the above layers. Note also that most of the standard deviations are 1.5 to 2 times smaller than those of the columnar AOT. Recently Pérez et al. (2008) showed that PM levels in Barcelona do not exhibit a marked seasonal trend. This result is also a motivation to further investigate about the possible relationship between PM levels and the PBL AOT (rather than the columnar AOT).
- During summer the fraction of AOT contained in the PBL is very similar at both wavelengths (35% at 532 nm and 44% at 1064 nm). This emphasizes the impact of long-range transport of aerosols in summer time which are responsible of the AOT increase. The columnar AOT increase observed in summer is therefore due to tropospheric aerosols, among them Saharan dust which is known for being poorly wavelength-dependent.

All mean values of the lidar-derived parameters are listed in Table 2.

**Seasonal variability of aerosol optical properties**

M. Sicard et al.

Title Page

Abstract

Introduction

Conclusions

References

Tables

Figures

◀

▶

◀

▶

Back

Close

Full Screen / Esc

Printer-friendly Version

Interactive Discussion



### 3.2 Lidar ratio, Ångström exponent and PBL height seasonal variability

The columnar lidar ratio has been retrieved from the daytime lidar measurements using the two-component elastic lidar algorithm constrained with the sun-photometer-derived AOT (see Sect. 2.2). Its annual cycle, the PDF at 532 nm and the PDF at 1064 nm are shown in Fig. 4a–c, respectively. All single values of the lidar ratio came with an errorbar of  $\varepsilon=1$  sr (see Sect. 2.2 and Reba et al., 2010a). In those conditions the mean errorbar associated to the monthly mean estimates is less than 1 sr when computed with the ML estimation. Because so small values would not be visible in Fig. 4a, the errorbars are not represented in that figure. Note that here the estimated accuracy of the sun-photometer AOT measurements, 0.02, has not been taken into account in the elastic algorithm constrained with the sun-photometer-derived AOT. Both annual cycles of the lidar ratio at 532 (LR<sub>532</sub>) and 1064 nm (LR<sub>1064</sub>) are very similar in shape, LR<sub>1064</sub> being approximately on average 15 to 20 sr lower than LR<sub>532</sub>. Since the inversions at both wavelengths were made independently of each other, this result validates somehow the combined method used. By using the ML estimation, winter and summer mean values were computed. At 532 nm mean values of 51 sr in winter and 60 sr in summer are found, while at 1064 nm mean values of 33 sr in winter and 42 sr in summer are found (all values have been rounded to the closest integer). The differences observed between both seasons, around 10 sr, show that the impact of Saharan dust intrusions is stronger in summer than in winter. The two peaks visible in April and July at 1064 nm (also visible but less marked at 532 nm) correspond to the months with the highest number of Saharan dust intrusions. Independently of the wavelength a typical value of lidar ratio for mineral dust is 60 sr as stated by Mona et al. (2006) and Papayannis et al. (2008). The lower lidar ratio values observed at 1064 nm prove that background aerosols, mostly formed by urban aerosols in Barcelona, have optical properties highly wavelength-dependent. Figure 4b and c show that during winter PDF(LR<sub>532</sub>>60 sr)≈0.35 and PDF(LR<sub>1064</sub>>60 sr)≈0.2. If those cases, equivalent to high AOTs, were omitted in the computation of the winter mean values then the mean

#### Seasonal variability of aerosol optical properties

M. Sicard et al.

Title Page

Abstract

Introduction

Conclusions

References

Tables

Figures



Back

Close

Full Screen / Esc

Printer-friendly Version

Interactive Discussion



LR<sub>532</sub> and LR<sub>1064</sub> due to background aerosols would be found lower than 51 and 33 sr, respectively.

Figure 5 shows the annual cycle and the PDF of the backscatter-related Ångström exponent (sometimes called colour index), AE (hereinafter called Ångström exponent), calculated as:

$$AE = - \frac{\ln \left[ \frac{\int_0^\infty \beta(\lambda_1, z) dz}{\int_0^\infty \beta(\lambda_2, z) dz} \right]}{\ln \left[ \frac{\lambda_1}{\lambda_2} \right]} \quad (2)$$

where  $\lambda_1$  and  $\lambda_2$  are the wavelengths of 532 and 1064 nm, respectively. The errorbar associated to each single AE value was computed as the standard deviation of the entire profile considering only the regions containing aerosols. In Fig. 5a the mean errorbar associated with the monthly mean value was computed with the ML estimation. The Ångström exponent stays between 0.25 and 1.3 over the whole year. Its mean value is found at  $1.0 \pm 0.02$  and  $0.82 \pm 0.02$  in winter and summer, respectively. Saharan dust particles which usually have a small AE ranging between 0 and 0.5 are the main contributor of the AE decrease observed between winter and summer. A peak around 1.15 is detected in April (in Fig. 4a the lidar ratio also reached a peak during that month). In a study led by Montserrat (1998) about the relation between synoptic patterns and wildfire outbreaks in Catalonia over a period of 12 years the author found a secondary peak of wildfires in April (the first peak being in July) that was attributed to late spring rains and the vegetation dryness at this period of the year due to phenom-  
enomenal and climate reasons. The last decade has been the hottest ever recorded in Northeastern Spain and it is very likely that Montserrat's (1998) hypothesis might still be true for the period studied here (2007–2009). Under this hypothesis small particles from spring wildfires in Catalonia might possibly explain the increase in the Ångström exponent in April. From Fig. 5b the Ångström exponent has a similar PDF distribution for both seasons where two main peaks occur at 0.5–0.6 and at 1.0–1.2. If we exclude the month of December (see Sect. 3.1), the lowest Ångström exponent val-

## Seasonal variability of aerosol optical properties

M. Sicard et al.

Title Page

Abstract

Introduction

Conclusions

References

Tables

Figures

◀

▶

◀

▶

Back

Close

Full Screen / Esc

Printer-friendly Version

Interactive Discussion



ues are reached in June and July when Saharan dust intrusions are more frequent. The August monthly mean is not as low probably because of the influence of particles originating from forest fires, most of them occurring during that month.

Figure 6 shows the annual cycle and the PDF of the PBL height. The errorbar of each single value of the PBL height was computed as the standard deviation of all the PBL heights retrieved for each measurement (Sicard et al., 2006). The errorbar associated with the monthly mean PBL heights in Fig. 6 was computed with the ML estimation. The mean PBL height reaches  $1035\pm 44$  m in winter and  $1388\pm 33$  m in summer. In winter it varies between 400 and 1770 m and in summer between 500 and 1910 m. The cases where the PBL height is found above 1800 m are very seldom. Except for a jump in June and July (Fig. 6a) relatively small differences are observed between summer and winter. This has also been observed in other coastal regions (Matthias et al., 2004). A similar climatology made earlier by Sicard et al. (2006) and based on measurements performed during the period of maximum insolation between 10:00 and 15:00 UTC and over a period of almost three years explained thanks to previous works from Millán et al. (1992, 1997) that “the limited growth of the PBL in summer is partly caused by the amplified compensatory subsidence over the Mediterranean sea and its coastal areas, attributable to the combined sea breeze and upslope flows plus the formation of the Iberian thermal low over the central plateau”. According to Fig. 6b  $\text{PDF}(h_{\text{PBL}} < 1200 \text{ m}) \simeq 0.6$  in winter and  $\text{PDF}(h_{\text{PBL}} < 1400 \text{ m}) \simeq 0.6$  in summer. These relatively small values of the PBL height indicate that, opposite to other continental cities where the PBL height follows a clear annual cycle with mean heights as high as 2500 m (Matthias and Bösenberg, 2002), the atmospheric stratification in Barcelona prevents the vertical development of the PBL as explained earlier by Sicard et al. (2006). We believe that the increase of the PBL height in June and July is partially due to two factors: 1) the constant increase of incoming solar radiation between June and August and 2) the main holiday exodus from the Barcelona area during July and especially August. The first point has two opposite effects: the growing of the convective PBL and the amplification of the Iberian thermal low which prevents the vertical development of the

## Seasonal variability of aerosol optical properties

M. Sicard et al.

Title Page

Abstract

Introduction

Conclusions

References

Tables

Figures

◀

▶

◀

▶

Back

Close

Full Screen / Esc

Printer-friendly Version

Interactive Discussion





PBL. The second point induces a drastic decrease of the PM levels emitted at ground level (Pey et al., 2010) and thus a decrease of the number of aerosols to be mixed in the convective PBL.

### 3.3 Vertical lidar profiles

5 Mean extinction, backscatter and lidar ratio profiles at 532 nm have been obtained for winter and summer by applying the Raman algorithm to all nighttime measurements when the Raman channel was available. Since too few Saharan dust events were observed during nighttime, they were discarded from the average computation and are treated in the next section. Figure 7 shows the winter and summer mean profiles  
10 of those parameters. The errorbar associated to each range cell of the extinction and backscatter profiles (visible as a grey envelope) was computed using the ML estimation described in Appendix A. Because of the extremely large variability of the lidar ratio profile retrieved with the Raman algorithm, mean values of it are given in different range intervals. Those range intervals (horizontal dashed lines in Fig. 7) were selected  
15 by looking at abrupt changes in the backscatter coefficient profiles. In each range interval the mean lidar ratio and its associated errorbars were also calculated using the ML estimation. Note that the Raman algorithm used in this study computes the errorbar associated to the lidar ratio retrieved using the first-order error propagation of the aerosol extinction and backscatter errorbars (Whiteman, 1999; Rocadenbosch et al., 2004) and the elastic and Raman power statistical fluctuations due to noise (Reba et al., 2006). At this point the ML estimation relies on the assumption of a Gaussian error distribution at each range cell which according to the central limit theorem (Barlow, 1989) is a plausible assumption for practical signal-to-noise ratios (greater than 10 according to Rocadenbosch et al., 2007).

25 In relation to Fig. 7, the mean and the maximum PBL heights are, respectively, 915 and 1220 m in winter and 930 and 1610 m in summer. Therefore, even though both lowermost layers between 590–915 m in winter and between 590–930 m in summer are formed by a mixture of PBL and tropospheric aerosols, they are representative of

## Seasonal variability of aerosol optical properties

M. Sicard et al.

Title Page

Abstract

Introduction

Conclusions

References

Tables

Figures

◀

▶

◀

▶

Back

Close

Full Screen / Esc

Printer-friendly Version

Interactive Discussion



PBL aerosols on a statistical basis. The layers above them at 915–1304 m in winter and at 930–1800 m in summer are representative of a mixture of PBL and tropospheric aerosols. All layers above them are formed by tropospheric aerosols only. In the lowermost layer (below 915 m in winter and below 930 m in summer) the extinction coefficient is quantitatively similar in both seasons while the backscatter coefficient is slightly higher in winter than in summer. This result corroborates the stability of the PBL AOT that was found in Sect. 3.1. Above those layers extinction and backscatter coefficients are higher in summer than in winter. In winter virtually no aerosols are present above 2500 m and in summer the free troposphere is reached at approximately 4000 m.

The lidar ratio profiles from both seasons have a similar shape. They yield lidar ratios around 30–36 sr in the lowermost layer and increase up to 42–49 sr in the uppermost layer. In the lowermost layer the lidar ratio value is smaller than in the above layers. Lidar ratio values are quite dependent on chemical and morphological aerosol properties and, accordingly, Fig. 7 indicates that the air-masses in the lowermost layers are on average different than those in the above layers. The values reached in the PBL layers are typical of marine aerosols mixed at different levels with pollution particles (Ansmann and Müller, 2005; Doherty et al., 1999; Sicard, 2001). The small difference between winter (36 sr) and summer (30 sr) may be explained by frequent weather instabilities in winter which leads to more dynamic conditions, thus reducing the accumulation of marine particles in the PBL (De Tomasi et al., 2006). Two layers between 915–1304 and between 1304–1930 m observed in winter show higher lidar ratios of 64 and 55 sr, respectively. Though further investigation is needed to explain these values a tentative explanation is given next. According to a cluster analysis of backtrajectories arriving in Barcelona performed by Jorba et al. (2004) approximately 66% of the transport pattern arriving at 1500 m in winter comes from the North-West quadrant. In more detail, approximately 20% comes from northerly flows (North Europe) and 12% from fast westerly flows (North America), which in total represents one third of the occurrences. Under this situation aerosols from urban and industrial origin (from North

## Seasonal variability of aerosol optical properties

M. Sicard et al.

Title Page

Abstract

Introduction

Conclusions

References

Tables

Figures

◀

▶

◀

▶

Back

Close

Full Screen / Esc

Printer-friendly Version

Interactive Discussion



## Seasonal variability of aerosol optical properties

M. Sicard et al.

Title Page

Abstract

Introduction

Conclusions

References

Tables

Figures

◀

▶

◀

▶

Back

Close

Full Screen / Esc

Printer-friendly Version

Interactive Discussion



Europe and/or North America) could be present in Barcelona in winter in the layers between 915–1930 m and could explain the significant increase observed in the lidar ratio. The situation in summer when recirculation flows predominate is completely different and do not allow the transport of urban and industrial aerosols originating from North Europe and/or North America in the layer centered around 1500 m. Additionally in summer recirculation layers, much stronger and more frequent than in winter, make the atmosphere more homogeneous (Millán et al., 1997; Rodríguez et al., 2001) and this partially explains why the peak seen in winter between 915–1930 m is not visible in summer in the region 930–1800 m. Above the PBL, in summer the lidar ratio increases slowly from 40 to 49 sr between 930 and 4326 m while in winter it is 44 sr in the range 1930–2953 m and 42 sr in the range 2953–4326 m. In winter the errorbar associated to the lidar ratio retrieved in the highest layer is very large because of the absence of aerosols, hence the larger variability of the retrieved lidar ratios. Also note that in summer the lidar ratio errorbar in the lowermost range is higher than in winter. This is due to a larger variety of aerosol types present in the PBL in summer. The summer anticyclonic situation favors weather stability which leads to a greater accumulation of aerosols in the lowest layer (confinement of air-masses and less frequent wet scavenging). This effect is reinforced by the strong temperature inversion between the PBL and the recirculation layer above which acts as a lid and prevents vertical mixing (Lu and Turco, 1994). Finally it is worth noting that since Saharan dust measurements were excluded in this analysis the winter and summer mean lidar ratio profiles shown here are lower than the mean values found in the seasonal variability study (Sect. 3.2).

During nighttime the aerosol layers between 930–3022 m in summer are typically residual layers or recirculation layers due to the sea-breeze phenomenon (Millán et al., 1997). Based on aircraft measurements made in summer, Millán et al. (1997) stated that the recirculation layers, so called mid-layers, mix at night with the residual layer and reach heights of ~3000 m which is in total agreement with the numbers found in our study. The mean lidar ratio in this layer is 40–43 sr in summer.

### 3.4 Special events

Special events in Barcelona are made of Saharan dust intrusions almost all year round and summer forest fires mostly in August. The first type of event is much more frequent and predictable than the second one and in the framework of EARLINET special measurements are performed for dust intrusions. In order to look at the effect of both events on the aerosol optical properties obtained in Barcelona, a case study including both types of aerosols is presented. The measurements were performed on 6 August 2008 between 01:42–04:11 UTC (150 min, nighttime) and 18:24–18:53 UTC (30 min, daytime). The nighttime measurement was inverted with both the Raman and the two-component elastic lidar algorithm constrained with the sun-photometer AOT interpolated between the last and the first AOT measurement available. The last sun-photometer AOT measured on 5 August 2008 (at 17:19 UTC) was 0.29 at 532 nm, while the first AOT measured on 6 August 2008 (at 06:09 UTC) was 0.18. The general tendency of the AOT on 6 August follows a very slight decrease along the day. A simple linear interpolation gives an AOT value at 01:42 UTC of 0.22 at 532 nm. This value was used to constrain the nighttime lidar inversion. The daytime measurement at 18:24–18:53 UTC was inverted with the two-component elastic lidar algorithm constrained with the sun-photometer AOT. Results are presented in Plate 1. Plate 1a shows the time evolution of the range-square-corrected signal at 532 nm as a function of height. Three layers are visible in both measurements: the PBL below 600 m, a first aerosol layer below 2000 m and a second thicker layer which extends up to 5800 m at 01:42 UTC and up to 4000 m at 18:24 UTC. One sees that the downward motion of the highest layer between 01:42 and 18:24 UTC, which might be due to subsidence effects, is associated with a decrease of the AOT at 532 nm from 0.22 down to 0.17. This probably reveals either an effect of aerosol sedimentation or a reduction of the intrusion intensity.

Plate 1b shows the profiles of backscatter and extinction coefficients, as well as the backscatter-derived Ångström exponent at 01:42 and 18:24 UTC. The lidar ratio re-

## Seasonal variability of aerosol optical properties

M. Sicard et al.

Title Page

Abstract

Introduction

Conclusions

References

Tables

Figures

◀

▶

◀

▶

Back

Close

Full Screen / Esc

Printer-friendly Version

Interactive Discussion



trieved by means of the Raman algorithm at 01:42 UTC is also shown as well as its mean value in the layers 316–2000 m and 2000–5000 m. The errorbar associated to each mean value was calculated using the ML estimation. Negative extinctions (due to noise propagation) retrieved by the Raman algorithm are not represented. For the computation of the lidar ratio mean values the points with a value greater than 100 sr or with an errorbar larger than the value itself, i.e. greater than 100%, were rejected as “outliers”. During both measurements large extinction values ( $>50 \text{ Mm}^{-1}$ ) are reached in the upper layer. The Raman-inverted extinction profile (at 01:42 UTC) indicates that values exceeding  $50 \text{ Mm}^{-1}$  are also reached in the region 316–2000 m. At 18:24 UTC such high values are not reached. By looking at the extinction and backscatter profiles, it appears clearly that the center of mass of the upper layer slightly decreases between 01:42 and 18:24 UTC while the top of the layer decreases significantly from 5800 down to 4000 m. The backscatter profiles from 01:42 UTC show that the profile retrieved with the two-component elastic lidar algorithm exactly follows the Raman-retrieved profile and that it is always within the errorbar interval (gray envelope) of the latter. The Raman-retrieved lidar ratio shows a large variability with rather large values (in two regions it equals or exceeds 100 sr). In the 316–2000 m region its mean value is  $53 \pm 13$  sr and in the upper layer it is  $46 \pm 14$  sr. Over the whole atmospheric column those numbers are in good agreement with the value of 52 sr retrieved by the two-component elastic lidar algorithm. At 18:24 UTC this value slightly decreases down to 50 sr. Though it is not shown in Plate 1b for the sake of graphical clarity, it is interesting to have a look at the lidar ratio values retrieved at 1064 nm, which are 50 sr at 01:42 UTC and 44 sr at 18:24 UTC. One sees clearly the predominance of Saharan dust at 01:42 UTC where the lidar ratio is wavelength-independent. At 18:24 UTC the difference has increased between both wavelengths indicating a lesser influence of Saharan dust on the columnar value. Müller et al. (2009) found mean lidar ratio values at 532 nm between 50 and 65 sr for Saharan dust measured in the North African source region. In the following paragraphs we will focus on both layers 316–2000 m and 2000–5000 m.

## Seasonal variability of aerosol optical properties

M. Sicard et al.

[Title Page](#)[Abstract](#)[Introduction](#)[Conclusions](#)[References](#)[Tables](#)[Figures](#)[⏪](#)[⏩](#)[◀](#)[▶](#)[Back](#)[Close](#)[Full Screen / Esc](#)[Printer-friendly Version](#)[Interactive Discussion](#)

**Seasonal variability  
of aerosol optical  
properties**

M. Sicard et al.

Title Page

Abstract

Introduction

Conclusions

References

Tables

Figures

◀

▶

◀

▶

Back

Close

Full Screen / Esc

Printer-friendly Version

Interactive Discussion



Plate 1c and d are HYSPLIT (the Hybrid Single Particle Lagrangian Integrated Trajectory Model) (Draxler and Rolph, 2003; Rolph, 2003) backtrajectories provided by NOAA–ARL (National Oceanic and Atmospheric Administration–Air Resources Laboratory) and used to check the air-masses origin. The blue trajectories show that in both cases the air-mass came from North Africa and that it travelled as low as at ground level before reaching Barcelona. This clearly identifies the plume seen at 2000–5800 m at 01:42 UTC and that at 2000–4000 m at 18:24 UTC as aerosols from desert origin. The presence of Saharan dust above Barcelona is also confirmed by the DREAM (Dust Regional Atmospheric Model) (Nickovic et al., 2001) map of dust optical thickness (Plate 1e) which predicted the presence of dust particles above Barcelona with AOTs as high as 0.3 at 550 nm at 12:00 UTC.

The backscatter-retrieved Ångström exponent is quite low and constant above 2000 m in both cases: its mean value is 0.46 at 01:42 UTC and 0.11 at 18:24 UTC. As said before, this is a typical signature of mineral dust as low values of AE are representatives of aerosols with wavelength-independent optical properties. In the North Africa source region Müller et al. (2009) measured mean Ångström exponent values of 0.5 for Saharan dust. Though further investigation is needed to explain the AE difference between the measurement at 01:42 UTC and that at 18:24 UTC some explanations such as dust aging are suggested. The column-averaged size distribution retrieved from the sun-photometer measurements (not shown here) shows in the morning of 6 August 2008 a displacement of the coarse mode towards larger particles from 2.24 to 3.86  $\mu\text{m}$  at the same volume size distribution of 0.063  $\mu\text{m}^3 \mu\text{m}^{-2}$ . If this increase was due to the enlargement of the dust particles in the layer above 2000 m, e.g. due to coagulation with other aerosols or due to cloud processing (clouds were present between 7 and 9 km at 18:24 UTC) (Sokolik, 1998), then the Ångström exponent in this layer would decrease accordingly.

In the bottom layer 316–2000 m which includes part of the PBL higher values of the lidar ratio are found (the mean LR is 53 sr and peaks greater than 100 sr are reached) at 01:42 UTC. They are associated with also higher values of the Ångström exponent

(the mean AE is 0.76). At 18:24 UTC the *AE* is even higher with a mean value of 0.83 and peaks as high as 1.75. This unusual change of lidar ratio and Ångström exponent is due to the presence of a different type of aerosol. The red trajectories (Plate 1c and d) show that in both cases the air-mass arriving at 1500 m has a peninsular origin. The MODIS (Moderate Resolution Imaging Spectroradiometer) global map of fires started between 29 July and 7 August 2008 (Plate 1f) clearly shows a quite large number of active fires over the Iberian Peninsula, mostly in East and Northeast Portugal and in Central and South Spain. The large lidar ratios and Ångström exponents found in the 316–2000 m region are the signature of high absorbing and small particles such as biomass-burning particles produced by forest fires. Wandinger et al. (2002) found values of biomass-burning aerosols at 532 nm between 40 and 80 sr while Balis et al. (2003) found a rather constant value around 61 sr at 355 nm and an Ångström exponent around 1.8. Since the profiles of both the lidar ratio and the Ångström exponent present a large variability we suspect that the aerosols observed in the 316–2000 m region might be due to a mixing of Saharan dust and biomass-burning and possibly re-circulation polluted air-masses.

## 4 Conclusions

The representativeness of the lidar measurements has been demonstrated by comparing on a statistical basis the AOT probability density function as well as the AOT annual cycle obtained by the UPC lidar and a sun-photometer. At both wavelengths of 532 and 1064 nm and during both seasons the AOT PDFs from both instruments are quite similar, the agreement being particularly good during summer. In terms of AOT both instruments showed a qualitatively and quantitatively good agreement. In winter some discrepancies due to a lesser number of lidar measurements (due to either bad weather or a lack of sun-photometer measurements, sunset measurements being performed at nighttime during winter) were visible in December, January and February. If we exclude those three months the difference between the lidar- and the sun-photometer-derived

## Seasonal variability of aerosol optical properties

M. Sicard et al.

Title Page

Abstract

Introduction

Conclusions

References

Tables

Figures

◀

▶

◀

▶

Back

Close

Full Screen / Esc

Printer-friendly Version

Interactive Discussion





monthly AOTs do not exceed 10%.

The discussion based on the annual and seasonal cycles of the AOT, the lidar ratio, the Ångström exponent and the PBL height as well as on the seasonal mean profiles of the aerosol optical coefficients allowed to show the impact of most of the natural events (Saharan dust intrusions, wildfires, etc.) and meteorological situations (summer anticyclonic situation, the formation of the Iberian thermal low, winter long-range transport from North Europe and/or North America, re-circulation flows, etc.) occurring in the Barcelona area. The lidar-derived winter and summer mean AOT are  $0.10 \pm 0.03$  and  $0.20 \pm 0.03$  at 532 nm and  $0.05 \pm 0.01$  and  $0.09 \pm 0.02$  at 1064 nm. The differences between winter and summer mean values are mainly due to long-range transport aerosols such as Saharan dust (more frequent in summer than in winter) and biomass burning particles (not present in winter). In both seasons a non-negligible number of cases with relatively high AOTs are observed which evidences the presence of Saharan dust in both seasons. The fraction of AOT contained in the PBL is always lower than the columnar AOT which indicates that aerosol layers are detected above the PBL all year round (except in December, January and February where both AOTs are nearly equal). The PBL AOT is also virtually constant over the year which indicates that PBL and troposphere are clearly decoupled. Its annual mean is around  $0.08 \pm 0.01$  at 532 nm and around  $0.03 \pm 0.01$  at 1064 nm, which represents 57 and 43% of the annual mean columnar AOT, respectively. During summer the impact of long-range transport of aerosols reduces the fraction of AOT contained in the PBL to 35%.

While the seasonal mean AOT values basically double between winter and summer, the mean lidar ratio values increase of about 10 sr (from 51 to 60 sr at 532 nm and from 33 to 42 sr at 1064 nm). Knowing that independently of the wavelength a typical value of lidar ratio for mineral dust is 60 sr, the latter result indicates that the impact of Saharan dust intrusions is stronger in summer than in winter. This is also reinforced by a decrease of the Ångström exponent (which indicates an increase of the size of the particles) from 1 in winter to 0.8 in summer. The study also permitted to identify predictable, isolated features such as the months with the highest number of Saharan

## Seasonal variability of aerosol optical properties

M. Sicard et al.

Title Page

Abstract

Introduction

Conclusions

References

Tables

Figures

◀

▶

◀

▶

Back

Close

Full Screen / Esc

Printer-friendly Version

Interactive Discussion



## Seasonal variability of aerosol optical properties

M. Sicard et al.

Title Page

Abstract

Introduction

Conclusions

References

Tables

Figures

⏪

⏩

◀

▶

Back

Close

Full Screen / Esc

Printer-friendly Version

Interactive Discussion



dust intrusions (the lidar ratio annual cycle showed two peaks in April and July) and spring wildfires (the AE annual cycle presented a peak at 1.15 in April). Except for the months of June and July the PBL height annual cycle did not show a clear difference between winter and summer. This result reveals the combined effect of the sea breeze and upslope flows plus the Iberian thermal low which in summer prevents the vertical development of the PBL.

The aerosol seasonal mean vertical distribution was analyzed by means of nighttime measurements and using the Raman algorithm. Saharan dust intrusions were discarded in this analysis. On average the highest aerosol layer is detected at 2500 m in winter and 4000 m in summer. The lidar ratio profiles from both seasons have the same tendency to increase between the PBL and the highest layer, indicating that the air-masses in the lowermost layers are on average different than those in the above layers. In the PBL lidar ratios around 30–36 sr are found, typical of marine aerosols mixed at different levels with pollution particles. In winter in the layer which extends from the PBL up to approximately 2000 m a peak is observed at 64 sr. This value reflects the intrusions of urban and industrial air-masses arriving from North Europe and/or North America which represent one third of the occurrences in Barcelona in the layer centered around 1500 m (Jorba et al., 2004). In summer recirculation layers, much stronger and more frequent than in winter, predominate and make the atmosphere more homogeneous preventing the accumulation of long-range transport aerosols from North Europe and/or North America above the PBL. Summertime recirculation layers are observed between the PBL and up to approximately 3000 m corroborating former works by Millán et al. (1997). The mean lidar ratio in those layers is 40–43 sr.

A special event of Saharan dust and biomass burning particles observed in August 2008 has been analyzed in detail. The nighttime and evening measurements made on 6 August 2008 showed a three-layer structure: a PBL up to 600 m, a second layer between 600–2000 m and a third layer above it. In the uppermost layer, identified by backtrajectories and DREAM model as being formed by Saharan dust particles, a lidar ratio of 46 sr was found (nighttime) while the backscatter-retrieved Ångström

exponent dropped on average from 0.46 (nighttime) down to 0.11 (evening). The latter drop could be due to the enlargement (observed on the sun-photometer columnar size distribution) of the dust particles due to coagulation with other aerosols or to cloud processing. In the 600–2000 m layer a higher lidar ratio of 53 sr was found (nighttime) and also a higher Ångström exponent of 0.76 (nighttime) and 0.83 (evening) was observed. Those numbers are the signature of high absorbing and small particles such as biomass-burning particles produced by forest fires, the presence of which was confirmed by the MODIS global map of fires started between 29 July and 7 August 2008. Two conclusions can be drawn from this analysis. First, one can expect two aerosol types of different origin and age, one consisting of a mixture of particles from biomass burning, and possibly from nearby locations and from desert origin (600–2000 m) and one consisting of “pure” mineral particles (in the uppermost layer). The combined analysis of nighttime Raman- and daytime pure elastic-inversions appeared to be suited for discriminating spatially different types of aerosols and for following their spatial and temporal evolution.

In conclusion we believe our results contribute to increase our knowledge of the aerosol optical properties over Northeastern Spain first, in terms of vertical distribution thanks to the lidar principle and second, temporally thanks to the climatology presented. Even though the annual cycles of all the parameters studied in the paper have allowed identifying on a statistical basis the natural events and the meteorological situations affecting the Barcelona area, the probability density functions have clearly shown a large dispersion. It is hoped that the results presented here will allow enhancing global aerosol models and radiative transfer models through a more accurate knowledge of the optical properties of the Western Mediterranean aerosols.

**Seasonal variability  
of aerosol optical  
properties**

M. Sicard et al.

[Title Page](#)[Abstract](#)[Introduction](#)[Conclusions](#)[References](#)[Tables](#)[Figures](#)[⏪](#)[⏩](#)[◀](#)[▶](#)[Back](#)[Close](#)[Full Screen / Esc](#)[Printer-friendly Version](#)[Interactive Discussion](#)

## Appendix A

The maximum likelihood estimation (Barlow, 1989) of a vector  $S=[S_1, S_2, \dots, S_i, \dots, S_n]$  known with an errorbar  $\sigma=[\sigma_1, \sigma_2, \dots, \sigma_i, \dots, \sigma_n]$  is formed by the weighting average:

$$\hat{S} = \frac{\sum_i \frac{S_i}{\sigma_i^2}}{\sum_i \frac{1}{\sigma_i^2}}. \quad (\text{A1})$$

Likewise, the estimated errorbar associated to  $\hat{S}$  is given by:

$$\sigma_{\hat{S}} = \sqrt{\frac{1}{\sum_i \frac{1}{\sigma_i^2}}}. \quad (\text{A2})$$

*Acknowledgements.* This work is supported by the European Union under the projects “Technology development program towards a European Extremely Large Telescope” (ELT Design Study, EU Specific Support Action, contract No. 011863 (RIDS)), and EARLINET-ASOS (EU Coordination Action, contract No. 025991 (RICA)); by the MICINN (Spanish Ministry of Science and Innovation) and FEDER funds under the project TEC2009-09106/TEC, and the Complementary Actions CGL2008-01330-E/CLI and CGL2009-08031-E/CLI; and by the European Space Agency under the project 21487/08/NL/HE. The authors gratefully acknowledge the Earth Sciences Division of the Barcelona Supercomputing Center for the use of the Barcelona AERONET sun-photometer data and the NOAA Air Resources Laboratory (ARL) for the provision of the HYSPLIT transport and dispersion model and READY website (<http://www.arl.noaa.gov/ready.html>) used in this publication. Generalitat de Catalunya/AGAUR is also thanked for Mr. Md. Reba’s and Mr. Kumar’s pre-doctoral fellowships.

## References

Ansmann, A., Riebesell, M., and Weitkamp, C.: Measurement of atmospheric aerosol extinction profiles with a Raman lidar, *Opt. Lett.*, 15(13), 746–748, 1990.

### Seasonal variability of aerosol optical properties

M. Sicard et al.

Title Page

Abstract

Introduction

Conclusions

References

Tables

Figures

◀

▶

◀

▶

Back

Close

Full Screen / Esc

Printer-friendly Version

Interactive Discussion



## Seasonal variability of aerosol optical properties

M. Sicard et al.

Title Page

Abstract

Introduction

Conclusions

References

Tables

Figures

◀

▶

◀

▶

Back

Close

Full Screen / Esc

Printer-friendly Version

Interactive Discussion



Ansmann, A., Wandinger, U., Riebesell, M., Weitkamp, C., and Michaelis, W.: Independent measurement of extinction and backscatter profiles in cirrus-clouds by using a combined Raman elastic-backscatter lidar, *Appl. Optics*, 31, 7113–7131, 1992.

Ansmann, A. and Müller, D.: Lidar and Atmospheric Aerosol Particles, *LIDAR – Range-Resolved Optical Remote Sensing of the Atmosphere*, edited by: Weitkamp, C., Springer, New York, p. 112, 2005.

Balis, D., Amiridis, V., Zerefos, C., Gerasopoulos, E., Andreae, M., Zanis, P., Kazantzidis, A., Kazadzis, S., and Papayannis, A.: Raman lidar and sunphotometric measurements of aerosol optical properties over Thessaloniki, Greece during a biomass burning episode, *Atmos. Environ.*, 37, 4529–4538, 2003.

Barlow, R. J.: *Statistics. A Guide to the Use of Statistical Methods in Physical Sciences*, Wiley, Chichester, UK, 1989.

Beck, J. P., Kryzanowski, M., and Koffi, B.: Ozone in the European Union, in *The Consolidated Report by the European Topic Centre Air Quality*, European Commission, Office for Official Publication, Bilthoven, The Netherlands, 1999.

Bösenberg, J., Ansmann, A., Baldasano, J. M., Balis, D., Böckmann, C., Calpini, B., Chaikovskiy, A., Flamant, P., Hagard, A., Mitev, V., Papayannis, A., Pelon, J., Resendes, D., Schneider, J., Spinelli, N., Trickl, T., Vaughan, G., Visconti, G., and Wiegner, M.: EARLINET: A European aerosol research lidar network, in *Proceedings of the 20th ILRC*, Vichy, France, 155–158, 2000.

De Leeuw, F., Sluiter, R., van Breugel, P., and Bogman, F.: Air Pollution by ozone in Europe in 1999 and the summer of 2000, *European Environmental Agency Topic Report number 1/2001*, EEA, Copenhagen, Denmark, 2001.

De Tomasi, F., Taruffo, A. M., and Perrone, M. R.: Height and seasonal dependence of aerosol optical properties over southeast Italy, *J. Geophys. Res.*, 111, D10203, doi:10.1029/2005JD006779, 2006.

Doherty, S. J., Anderson, T. L., and Charlson, R. J.: Measurement of the lidar ratio for atmospheric aerosols with a 180° backscatter nephelometer, *Appl. Optics*, 38, 1823–1832, 1999.

Draxler, R. R. and Rolph, G. D.: <http://www.arl.noaa.gov/ready/hysplit4.html>, NOAA Air Resources Laboratory, Silver Spring, MD, 2003.

Fernald, F. G.: Analysis of atmospheric lidar observations: some comments, *Appl. Optics*, 23, 652–653, 1984.

Holben, B. N., Eck, T. F., Slutsker, I., Tanre, D., Buis, J. P., Setzer, A., Vermote, E., Reagan, J. A.,

**Seasonal variability  
of aerosol optical  
properties**

M. Sicard et al.

[Title Page](#)[Abstract](#)[Introduction](#)[Conclusions](#)[References](#)[Tables](#)[Figures](#)[◀](#)[▶](#)[◀](#)[▶](#)[Back](#)[Close](#)[Full Screen / Esc](#)[Printer-friendly Version](#)[Interactive Discussion](#)

Kaufman, Y. J., Nakajima, T., Lavenu, F., Jankowiak, I., and Smirnov, A.: AERONET: A federated instrument network and data archive for aerosol characterization, *Remote Sens. Environ.*, 66, 1–16, 1998.

Forster, P., Ramaswamy, V., Artaxo, P., Berntsen, T., Betts, R., Fahey, D. W., Haywood, J., Lean, J., Lowe, D. C., Myhre, G., Nganga, J., Prinn, R., Raga, G., Schulz, M., and Van Dorland, R.: Changes in atmospheric constituents and in radiative forcing, in *Climate Change 2007: The Physical Science Basis. Contribution of Working Group I to the Fourth Assessment Report of the Intergovernmental Panel on Climate Change*, edited by: Solomon, S., Qin, D., Manning, M., Chen, Z., Marquis, M., Averyt, K. B., Tignor, M., and Miller, H. L., Cambridge Univ. Press, Cambridge, UK, 129–234, 2007.

Jiménez, P., Lelieveld, J., and Baldasano, J. M.: Multiscale modeling of air pollutants dynamics in the northwestern Mediterranean basin during a typical summertime episode, *J. Geophys. Res.*, 111, D18306, doi:10.1029/2005JD006516, 2006.

Jorba, O., Pérez, C., Rocadenbosch, F., and Baldasano, J. M.: Cluster analysis of 4-day back-trajectories arriving in the Barcelona area (Spain) from 1997 to 2002, *J. Appl. Meteorol.*, 43, 887–901, 2004.

Kallos, G., Nickovic, S., Jovic, D., Kakaliagou, O., Papadopoulos, A., Misirlis, N., Boukas, L., Mimikou, N., Sakellaridis, G., Papageorgiou, J., Anadranistakis, E., and Manousakis, M.: The Regional Weather Forecasting System SKIRON and its capability for forecasting dust uptake and transport, in *Proc. of the WMO conference on dust storms, Damascus, Syria*, pp 9., 1997.

Klett, J. D.: Lidar inversion with variable backscatter/extinction ratios, *Appl. Optics*, 24, 1638–1643, 1985.

Landolfo, E., Papayannis, A., Artaxo, P., Castanho, A. D. A., de Freitas, A. Z., Souza, R. F., Vieira Junior, N. D., Jorge, M. P. M. P., Sánchez-Ccoyllo, O. R., and Moreira, D. S.: Synergetic measurements of aerosols over São Paulo, Brazil using LIDAR, sunphotometer and satellite data during the dry season, *Atmos. Chem. Phys.*, 3, 1523–1539, doi:10.5194/acp-3-1523-2003, 2003.

Lu, R. and Turco, R.: Air pollutant transport in a coastal environment, Part I: Two-dimensional simulations of sea-breeze and mountains effects, *J. Atmos. Sci.*, 51, 2285–2308, 1994.

Matthias, V. and Bösenberg, J.: Aerosol climatology for the planetary boundary layer derived from regular lidar measurements, *Atmos. Res.*, 63, 221–245, 2002.

Matthias, V., Balis, D., Bösenberg, J., Eixmann, R., Iarlori, M., Komguem, L., Mattis, I., Pa-

## Seasonal variability of aerosol optical properties

M. Sicard et al.

Title Page

Abstract

Introduction

Conclusions

References

Tables

Figures

◀

▶

◀

▶

Back

Close

Full Screen / Esc

Printer-friendly Version

Interactive Discussion



payannis, A., Pappalardo, G., Perrone, M. R., and Wang, X.: Vertical aerosol distribution over Europe: Statistical analysis of Raman lidar data from 10 European Aerosol Research Lidar Network (EARLINET) stations. *J. Geophys. Res.*, 109, D18201, doi:10.1029/2004JD004638, 2004.

5 Mattis, I., Mona, L., Müller, D., Pappalardo, G., Alados Arboledas, L., D'Amico, G., Amodeo, A., Apituley, A., Baldasano, J. M., Böckmann, C., Bösenberg, J., Chaikovskiy, A., Comeron, A., Giannakaki, E., Grigorov, I., Guerrero Rascado, J. L., Gustafsson, O., Hansen, G., Iarlori, M., Mitev, V., Molero Menéndez, F., Nicolae, D., Papayannis, A., Pérez García-Pando, C., Perrone, M. R., Pietruczuk, A., Putaud, J.-P., Ravetta, F., Rodríguez, A., Seifert, P., Sicard, M.,  
10 Simeonov, V., Sobolewski, P., Spinelli, N., Stohl, A., Tesche, M., Trickl, T., Wandinger, U., and Wiegner, M.: EARLINET correlative measurements for CALIPSO. *Lidar Technologies, Techniques, and Measurements for Atmospheric Remote Sensing III*, U. N. Singh, G. Pappalardo (Eds.), in: *Proc. SPIE*, 6750, 67500Z, doi:10.1117/12.7380902007, 2007.

15 Millán, M. M., Artiñano, B., Alonso, L., Castro, M., Fernandez-Patier, R., and Goberna, J.: Meso-meteorological Cycles of Air Pollution in the Iberian Peninsula (MECAPIP). *Air Pollution Research Report 44* (EUR No. 14834) CEC-DG XII/E-1 (1992) Rue de la Loi, 200, 1040, Brussels, 1992.

20 Millán, M. M., Salvador, R., Mantilla, E., and Kallos, G.: Photo-oxidant dynamics in the Mediterranean basin in summer: results from European research projects, *J. Geophys. Res.*, 102, 8811–8823, 1997.

Mona, L., Amodeo, A., Pandolfi, M., and Pappalardo, G.: Saharan dust intrusions in the Mediterranean area: Three years of Raman lidar measurements, *J. Geophys. Res.*, 111, D16203, doi:10.1029/2005JD006569, 2006.

25 Montserrat, D.: Situaciones sinópticas relacionadas con el inicio de grandes incendios forestales en Cataluña, *Nimbus*, 1–2, 93–112, 1998.

Müller, D., Heinold, B., Tesche, M., Tegen, I., Althausen, D., Amiridis, V., Amodeo, A., Ansmann, A., Alados-Arboledas, L., Balis, D., Comeron, A., D'Amico, G., Gerasopoulos, E., Guerrero-Rascado, J. L., Freudenthaler, V., Giannakaki, E., Heese, B., Iarlori, M., Mamouri, R. E., Mona, L., Papayannis, A., Pappalardo, G., Perrone, R.-M., Pisani, G.,  
30 Rizi, V., Sicard, M., Spinelli, N., Tafuro, A., and Wiegner, M.: EARLINET observations of the 14–22-May long-range dust transport event during SAMUM 2006: validation of results from dust transport modelling, *Tellus B*, 61, 325–339, 2009.

Nickovic, S., Papadopoulos, A., Kakaliagou, O., and Kallos, G.: A model for prediction of desert



## Seasonal variability of aerosol optical properties

M. Sicard et al.

Title Page

Abstract

Introduction

Conclusions

References

Tables

Figures

◀

▶

◀

▶

Back

Close

Full Screen / Esc

Printer-friendly Version

Interactive Discussion

dust cycle in the atmosphere, *J. Geophys. Res.*, 106, 18113–18129, 2001.

Papayannis, A., Amiridis, V., Mona, L., Tsaknakis, G., Balis, D., Bösenberg, J., Chaikovski, A., De Tomasi, F., Grigorov, I., Mattis, I., Mitev, V., Müller, D., Nickovic, S., Pérez, C., Pietruczuk, A., Pisani, G., Ravetta, F., Rizi, V., Sicard, M., Trickl, T., Wiegner, M., Gerd-  
 5 ing, M., Mamoury, R., Di Amico, G., and Pappalardo, G.: Systematic lidar observations of Saharan dust over Europe in the frame of EARLINET (2000–2002), *J. Geophys. Res.*, 113, D10204, doi:10.1029/2007JD009028, 2008.

Pappalardo, G., Bösenberg, J., Amodeo, A., Ansmann, A., Apituley, A., Alados Arboledas, L., Balis, D., Böckmann, C., Chaikovsky, A., Comeron, A., Freudenthaler, V., Hansen, G.,  
 10 Mitev, V., Nicolae, D., Papayannis, A., Perrone, M. R., Pietruczuk, A., Pujadas, M., Putaud, J.-P., Ravetta, F., Rizi, V., Simeonov, V., Spinelli, N., Stoyanov, D., Trickl, T., and Wiegner, M.: EARLINET-ASOS: European Aerosol Research Lidar Network-Advanced Sustainable Observation System, American Meteorological Society Annual Meeting, San Antonio, Texas, USA, 2007.

Pappalardo, G., Papayannis, A., Bösenberg, J., Ansmann, A., Apituley, A., Alados Arboledas, L., Balis, D., Böckmann, C., Chaikovsky, A., Comeron, A., Gustafsson, O., Hansen, G., Mitev, V., Mona, L., Nicolae, D., Perrone, M. R., Pietruczuk, A., Pujadas, M., Putaud, J.-P., Ravetta, F., Rizi, F., Simeonov, V., Spinelli, N., Stoyanov, D., Trickl, T., and Wiegner, M.: EARLINET coordinated lidar observations of Saharan dust events on continental scale. *IOP Conf. Ser.: Earth Environ. Sci.*, 7, 1, doi:10.1088/1755-1307/7/1/012002,  
 20 2009.

Perez, N., Pey, J., Querol, X., Alastuey, A., Lopez, J. M., and Viana, M.: Partitioning of major and trace components in PM<sub>10</sub>-PM<sub>2.5</sub>-PM<sub>1</sub> at an urban site in Southern Europe, *Atmos. Environ.*, 42, 1677–1691, 2008.

Pey, J., Querol, X., and Alastuey, A.: Discriminating the regional and urban contributions in the North-Western Mediterranean: PM levels and composition, *Atmos. Environ.*, 44(13), 1587–1596, doi:10.1016/j.atmosenv.2010.02.005, 2010.

Querol, X., Rodríguez, S., Cuevas, E., Viana, M., and Alastuey, A.: Intrusiones de masas de aire africano sobre la Península Ibérica y Canarias: Mecanismos de transporte y variación estacional. 3<sup>a</sup> Asamblea Hispano Portuguesa de Geodesia y Geofísica, Valencia, 2002.

Reba, M. N. M., Roca-denbosch, F., and Sicard, M.: A straightforward signal-to-noise ratio estimator for elastic/Raman lidar signals, in Proceedings of SPIE “Remote Sensing of Clouds and the Atmosphere XI”, Vol. 6362, pp. 626223-1–626223-12, Stockholm (Sweden), 11–

## Seasonal variability of aerosol optical properties

M. Sicard et al.

Title Page

Abstract

Introduction

Conclusions

References

Tables

Figures

◀

▶

◀

▶

Back

Close

Full Screen / Esc

Printer-friendly Version

Interactive Discussion



14 September, 2006, ISSN: 0277–786 X, ISBN: 0-8194-6457-0, 2006.

Reba, M. N. M., Rocadenbosch, F., Sicard, M., Kumar, D., and Tomás, S.: On the lidar ratio estimation from the synergy between AERONET sun-photometer data and elastic lidar inversion, in Proc. of the 25th ILRC, Saint-Petersburg, Russia, in press, 2010a.

5 Reba, M. N. M.: Data processing and inversion interfacing the UPC elastic-Raman lidar system, PhD Thesis, Universitat Politècnica de Catalunya, Spain, in preparation, 2010b.

Rocadenbosch, F., Sicard, M., Comerón, A., Baldasano, J. M., and Rodríguez, A., Agishev, R., Muñoz, C., López, M. A., and García-Vizcaino, D.: The UPC scanning Raman lidar: an engineering overview, in: Proceeding of the 21st ILRC, Vol. 1, 69–70, 2002.

10 Rocadenbosch, F., Sicard, M., Ansmann, A., Wandinger, U., Matthias, V., Pappalardo, G., Böckmann, C., Comerón, A., Rodríguez, A., Muñoz, C., López, M. A., and García-Vizcaino, D.: Statistical considerations on the Raman inversion algorithm: data inversion and error assessment, in Proceedings of SPIE “Laser Radar Technology for Remote Sensing”, Vol. 5240, pp. 116–126, Barcelona (Spain), 8–9 September, 2003, ISSN: 0277–786 X, ISBN: 0-8194-5123-1, 2004.

Rocadenbosch, F., Comerón, A., Sicard, M., and Reba, M. N. M.: Statistical considerations on the extinction error variance for the Raman lidar inversion, in Proceedings of IEEE “International Geoscience and Remote Sensing Symposium (IGARSS)”, 2771–2774, Barcelona (Spain), 25 July 2007. ISBN: 1-4244-1212-9, 2007.

20 Rodríguez, S., Querol, X., Alastuey, A., Kallos, G., and Kakaliagou, O.: Saharan dust contributions to PM<sub>10</sub> and TSP levels in Southern and Eastern Spain, Atmos. Environ., 35, 2433–2447, 2001.

Rodríguez, S., Querol, X., Alastuey, A., and Mantilla, E.: Origin of high summer PM<sub>10</sub> and TSP concentrations at rural sites in Eastern Spain, Atmos, Environ., 36, 3101–3112, 2002a.

25 Rodríguez, S.: Sources and processes affecting levels and composition of atmospheric particulate matter in the Western Mediterranean. PhD Thesis. Universitat Politècnica de Catalunya, Spain (available at <http://www.tdx.cesca.es/TDX-1217102-164843/>), 2002b.

Rolph, G. D.: <http://www.arl.noaa.gov/ready/hysplit4.html>, NOAA Air Resources Laboratory, Silver Spring, MD, 2003.

30 Santacesaria, V., Marengo, F., Balis, D., Papayannis, A., and Zerefos, C.: Lidar observations of the Planetary Boundary Layer above the city of Thessaloniki, Greece, Il Nuovo Cimento, 21, 585–596, 1988.

Sasano, Y. and Nakane, H.: Significance of the extinction/backscatter ratio and the boundary

**Seasonal variability  
of aerosol optical  
properties**

M. Sicard et al.

[Title Page](#)[Abstract](#)[Introduction](#)[Conclusions](#)[References](#)[Tables](#)[Figures](#)[◀](#)[▶](#)[◀](#)[▶](#)[Back](#)[Close](#)[Full Screen / Esc](#)[Printer-friendly Version](#)[Interactive Discussion](#)

value term in the solution for the two-component lidar equation, *Appl. Optics*, 23, 11–13, 1984.

Sicard, M.: Development of a compact, backscatter lidar tunable to various angles for the analysis of the optical and dynamical properties of the aerosols of the low atmosphere, PhD Thesis, Univ. Paris 7 Denis Diderot, France, 2001.

Sicard, M., Pérez, C., Rocadenbosch, F., Baldasano, J. M., and García-Vizcaino, D.: Mixed-layer depth determination in the Barcelona coastal area from regular lidar measurements: methods, results and limitations, *Bound.-Lay. Meteorol.* 119, 135–157, 2006.

Sokolik, I. N. and Toon, O. B.: Incorporation of mineralogical composition into models of the radiative properties of mineral aerosol from UV to IR wavelengths, *J. Geophys. Res.*, 104, 9423–9444, 1999.

Textor, C., Schulz, M., Guibert, S., Kinne, S., Balkanski, Y., Bauer, S., Berntsen, T., Berglen, T., Boucher, O., Chin, M., Dentener, F., Diehl, T., Easter, R., Feichter, H., Fillmore, D., Ghan, S., Ginoux, P., Gong, S., Grini, A., Hendricks, J., Horowitz, L., Huang, P., Isaksen, I., Iversen, I., Kloster, S., Koch, D., Kirkevåg, A., Kristjansson, J. E., Krol, M., Lauer, A., Lamarque, J. F., Liu, X., Montanaro, V., Myhre, G., Penner, J., Pitari, G., Reddy, S., Seland, Ø., Stier, P., Takemura, T., and Tie, X.: Analysis and quantification of the diversities of aerosol life cycles within AeroCom, *Atmos. Chem. Phys.*, 6, 1777–1813, doi:10.5194/acp-6-1777-2006, 2006.

Wandinger, U., Müller, D., Böckmann, C., Althausen, D., Matthias, V., Bösenberg, J., Weiß, V., Fiebig, M., Wendisch, M., Stohl, A., and Ansmann, A.: Optical and microphysical characterization of biomass-burning and industrial-pollution aerosols from multiwavelength lidar and aircraft measurements, *J. Geophys. Res.*, 107(D21), 8125, doi:10.1029/2000JD000202, 2002.

Whiteman, D. N.: Application of statistical methods to the determination of slope in lidar data, *Appl. Optics*, 38, 3360–3369, 1999.

Winker, D. M., Hunt, W. H., and McGill, M. J.: Initial performance assessment of CALIOP, *Geophys. Res. Lett.*, 34, L19803, doi:10.1029/2007GL030135, 2007.

**Seasonal variability  
of aerosol optical  
properties**

M. Sicard et al.

Title Page

Abstract

Introduction

Conclusions

References

Tables

Figures

I◀

▶I

◀

▶

Back

Close

Full Screen / Esc

Printer-friendly Version

Interactive Discussion

**Table 1.** Number of measurements performed and inverted satisfactorily during the period 2007–2009. T, D and N indicate, respectively, Total, Day and Night.

	2007			2008			2009			T	2007–2009				
	T	D	N	T	D	N	T	D	N		T	D	N		
Total	56	50	6	32	21	11	63	35	28	151	106		45		
Regular	34	34	0	15	12	3	35	22	13	84	56%	68	64%	16	36%
CALIPSO	14	8	6	12	5	7	21	9	12	47	31%	22	21%	25	56%
Dust	8	8	0	5	4	1	7	4	3	20	13%	16	15%	4	9%

## Seasonal variability of aerosol optical properties

M. Sicard et al.

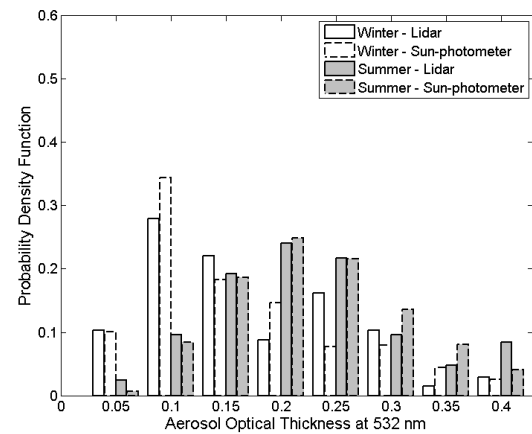
**Table 2.** Annual, winter and summer means and errorbars (computed with the ML estimation) of the columnar AOT, the PBL AOT, the ratio  $\frac{AOT_{PBL}}{AOT_{column}}$ , the lidar ratio, the backscatter-related Ångström exponent and the PBL height.

	AOT <sub>column</sub>		AOT <sub>PBL</sub>		AOT <sub>PBL</sub> /AOT <sub>column</sub> (%)		Lidar ratio (sr)		Ångström exponent	PBL Height (m)
	532	1064	532	1064	532	1064	532	1064		
Wavelength (nm)	532	1064	532	1064	532	1064	532	1064		
Year	0.14±0.02	0.07±0.01	0.08±0.01	0.03±0.01	57	43	56	37	0.91±0.02	1257±27
Winter	0.10±0.03	0.05±0.01	0.08±0.02	0.03±0.01	80	60	51	33	1.00±0.02	1035±44
Summer	0.20±0.03	0.09±0.02	0.07±0.02	0.04±0.02	35	44	60	42	0.82±0.02	1388±33

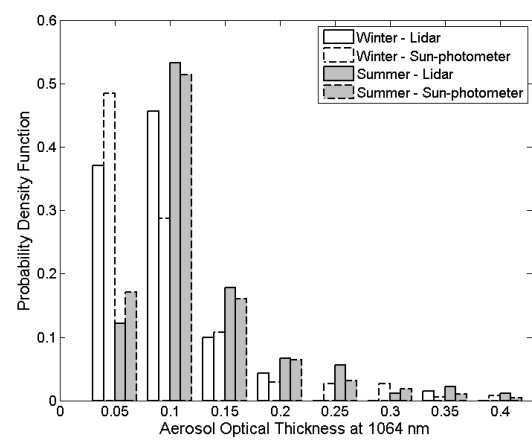
[Title Page](#)
[Abstract](#)
[Introduction](#)
[Conclusions](#)
[References](#)
[Tables](#)
[Figures](#)
[⏪](#)
[⏩](#)
[◀](#)
[▶](#)
[Back](#)
[Close](#)
[Full Screen / Esc](#)
[Printer-friendly Version](#)
[Interactive Discussion](#)


**Seasonal variability of aerosol optical properties**

M. Sicard et al.



(a)



(b)

**Fig. 1.** Sun-photometer- and lidar-derived AOT probability density function for winter (October–March) and summer (April–September) **(a)** at 532 nm and **(b)** at 1064 nm.

Title Page

Abstract Introduction

Conclusions References

Tables Figures

◀ ▶

◀ ▶

Back Close

Full Screen / Esc

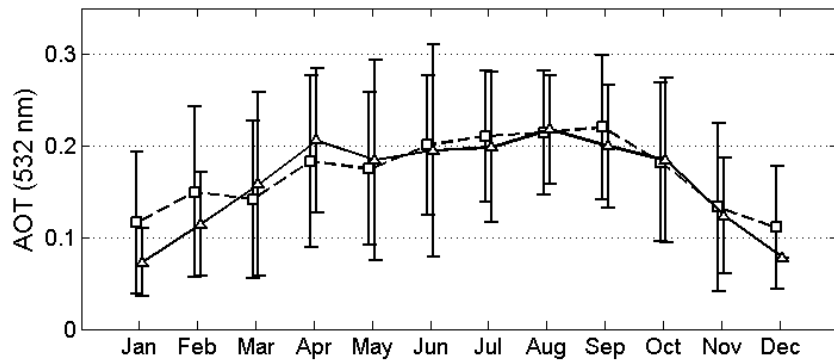
Printer-friendly Version

Interactive Discussion

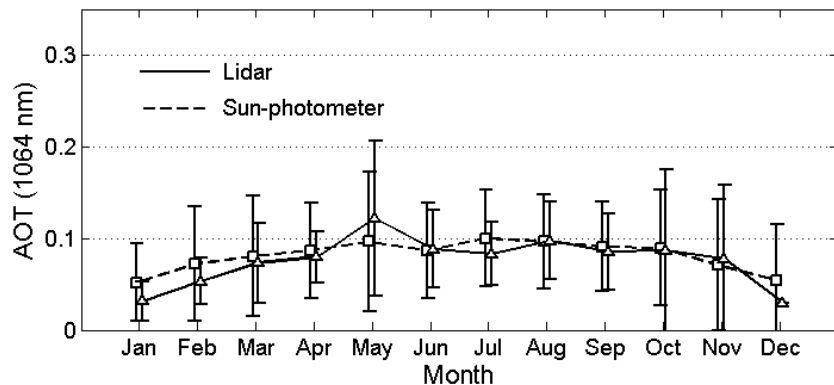


**Seasonal variability of aerosol optical properties**

M. Sicard et al.



(a)



(b)

**Fig. 2.** Annual cycle of the sun-photometer- and lidar-derived AOT **(a)** at 532 nm and **(b)** at 1064 nm. Lidar data are represented by triangles and solid lines. Sun-photometer data are represented by squares and dashes lines.

Title Page

Abstract	Introduction
Conclusions	References
Tables	Figures

◀
▶

◀
▶

Back	Close
------	-------

Full Screen / Esc

Printer-friendly Version

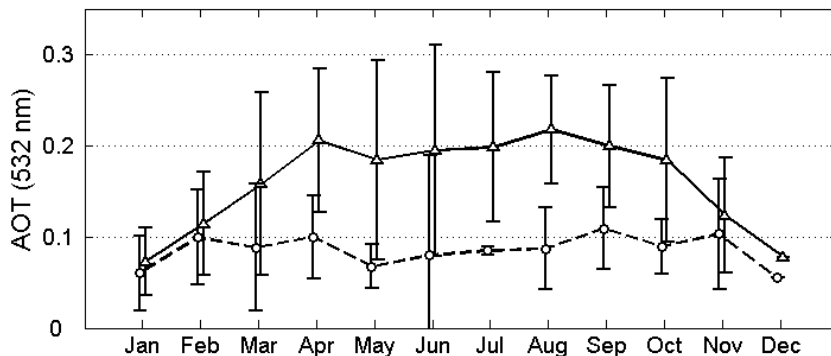
Interactive Discussion



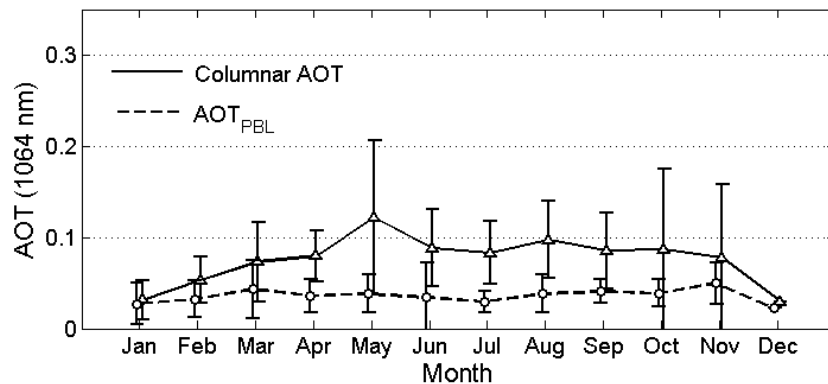


**Seasonal variability of aerosol optical properties**

M. Sicard et al.



(a)



(b)

**Fig. 3.** Lidar-derived columnar AOT and fraction of the AOT included in the PBL.

Title Page

Abstract Introduction

Conclusions References

Tables Figures

◀ ▶

◀ ▶

Back Close

Full Screen / Esc

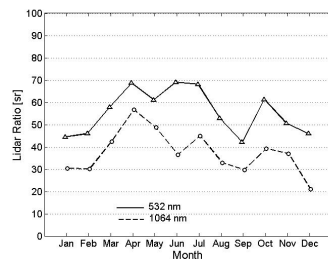
Printer-friendly Version

Interactive Discussion

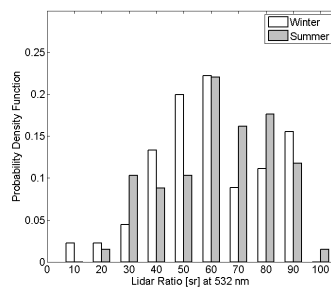


## Seasonal variability of aerosol optical properties

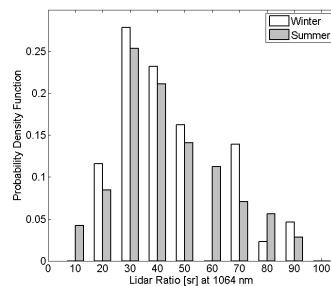
M. Sicard et al.



(a)



(b)



(c)

**Fig. 4.** Lidar-derived daytime lidar ratio: **(a)** Annual cycle; probability density functions at **(b)** 532 and **(c)** 1064 nm.

[Title Page](#)[Abstract](#)[Introduction](#)[Conclusions](#)[References](#)[Tables](#)[Figures](#)[◀](#)[▶](#)[◀](#)[▶](#)[Back](#)[Close](#)[Full Screen / Esc](#)[Printer-friendly Version](#)[Interactive Discussion](#)

**Seasonal variability of aerosol optical properties**

M. Sicard et al.

Title Page

Abstract Introduction

Conclusions References

Tables Figures

◀ ▶

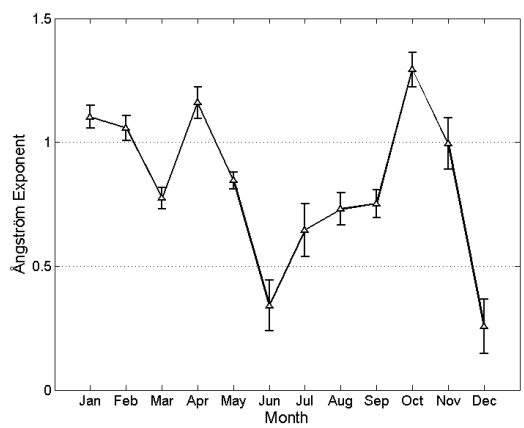
◀ ▶

Back Close

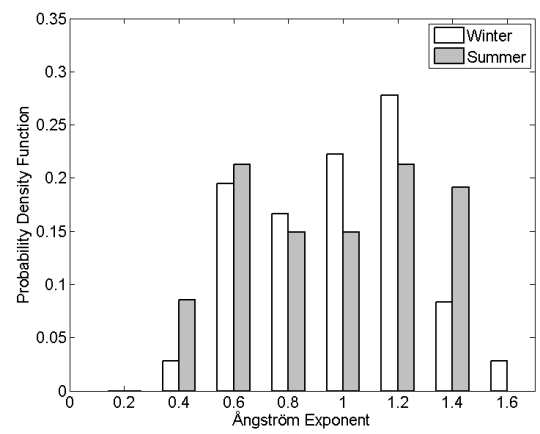
Full Screen / Esc

Printer-friendly Version

Interactive Discussion

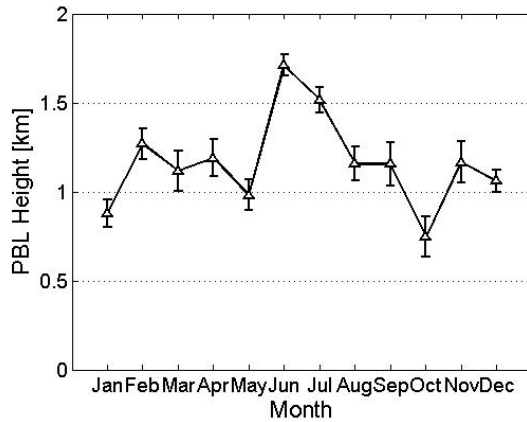


(a)

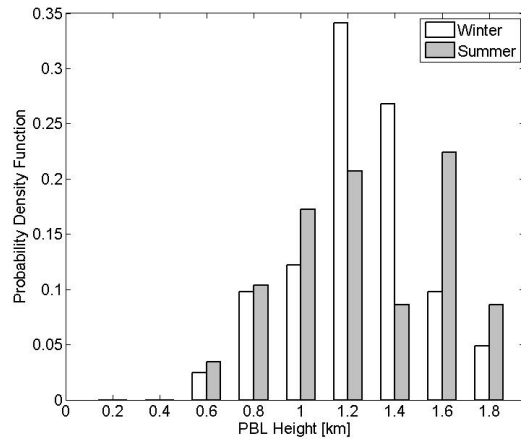


(b)

**Fig. 5.** Lidar-derived daytime backscatter-related Ångström exponent: **(a)** Annual cycle; **(b)** probability density function.



(a)

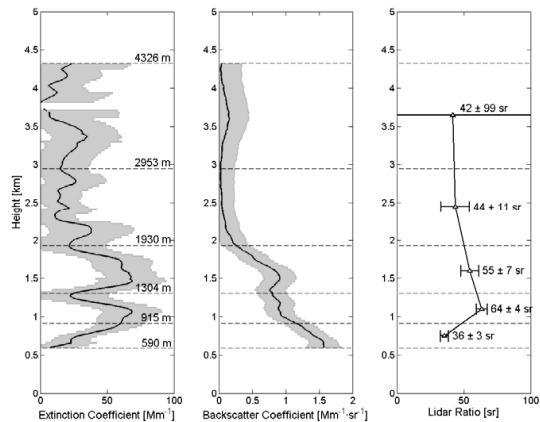


(b)

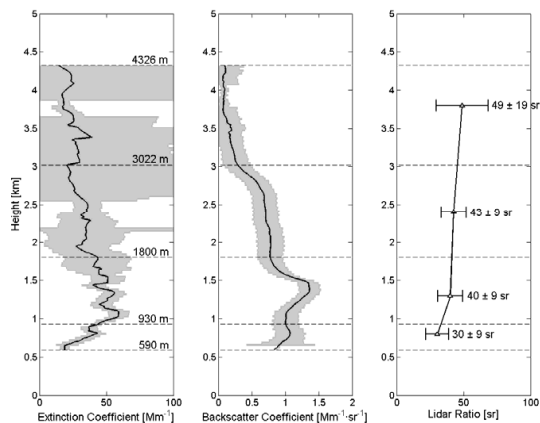
**Fig. 6.** Lidar-derived daytime PBL height: **(a)** Annual cycle; **(b)** probability density function.

## Seasonal variability of aerosol optical properties

M. Sicard et al.



(a)



(b)

**Fig. 7.** (a) Winter and (b) summer mean profiles of the extinction coefficient, backscatter coefficient and lidar ratio at 532 nm retrieved from the nighttime measurements. Saharan dust measurements were excluded from this analysis.

14093

Title Page

Abstract

Introduction

Conclusions

References

Tables

Figures

◀

▶

◀

▶

Back

Close

Full Screen / Esc

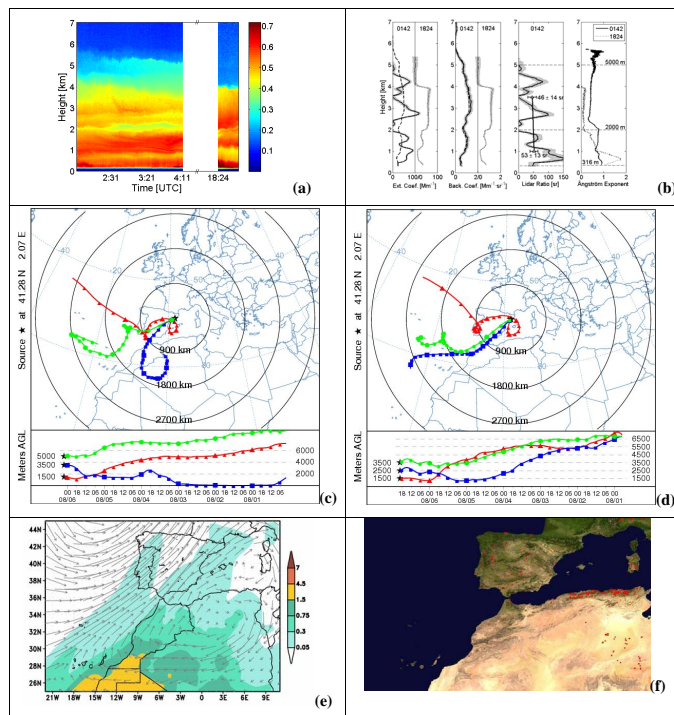
Printer-friendly Version

Interactive Discussion



## Seasonal variability of aerosol optical properties

M. Sicard et al.



**Plate 1.** Measurements performed on 6 August 2008 at 01:42 and 18:24 UTC. **(a)** Range-square-corrected signal at 532 nm (the numbers in white in the image indicate the sun-photometer AOT); **(b)** Extinction and backscatter coefficients (solid line: Raman inversion at 01:42 UTC, dashed line: AOT-constrained two-component elastic lidar algorithm at 01:42 UTC (LR=52 sr), dotted line: AOT-constrained two-component elastic lidar algorithm (LR=50 sr) at 18:24 UTC), lidar ratio (Raman inversion at 01:42 UTC) and backscatter-related Ångström exponent; **(c)** Hysplit backtrajectories arriving at Barcelona on 6 August 2008 at 02:00 UTC and **(d)** at 19:00 UTC; **(e)** DREAM dust optical thickness at 550 nm and wind at 3000 m on 6 August 2008 at 12:00 UTC; **(f)** MODIS map of fires started between 29 July and 7 August 2008.

Title Page

Abstract

Introduction

Conclusions

References

Tables

Figures

◀

▶

◀

▶

Back

Close

Full Screen / Esc

Printer-friendly Version

Interactive Discussion