

This discussion paper is/has been under review for the journal Atmospheric Chemistry and Physics (ACP). Please refer to the corresponding final paper in ACP if available.

**Comparison of TOMS
retrievals and UVMRP
measurements**

M. Xu et al.

Comparison of TOMS retrievals and UVMRP measurements of surface spectral UV radiation in the United States

M. Xu¹, X.-Z. Liang¹, W. Gao², and N. Krotkov³

¹Division of Illinois State Water Survey, Institute of Natural Resource Sustainability, University of Illinois, 2204 Griffith Drive, Champaign, IL 61820, USA

²Natural Resource Ecology Laboratory, Colorado State University, Fort Collins, CO 80512, USA

³Univeristy of Maryland, Goddard Earth Sciences and Technology Center, Baltimore County, Maryland 21228, USA

Received: 20 February 2010 – Accepted: 14 April 2010 – Published: 23 April 2010

Correspondence to: X.-Z. Liang (xliang@illinois.edu)

Published by Copernicus Publications on behalf of the European Geosciences Union.

Title Page

Abstract

Introduction

Conclusions

References

Tables

Figures

◀

▶

◀

▶

Back

Close

Full Screen / Esc

Printer-friendly Version

Interactive Discussion



Abstract

Surface noontime spectral ultraviolet (UV) irradiances during May–September of 2000–2004 from the total ozone mapping spectrometer (TOMS) satellite retrievals are systematically compared with the ground measurements at 27 climatological sites maintained by the USDA UV-B Monitoring and Research Program. The TOMS retrievals are evaluated by two cloud screening methods and local air quality conditions to determine their bias dependencies on spectral bands, cloudiness, aerosol loadings, and air pollution. Under clear-sky conditions, TOMS retrieval biases vary from –3.4% (underestimation) to 23.6% (overestimation). Averaged over all sites, the relative mean biases for 305, 311, 325, and 368 nm are respectively 15.4, 7.9, 7.6, and 7.0% (overestimation). The bias enhancement for 305 nm by approximately twice that of other bands likely results from absorption by gaseous pollutants (SO₂, O₃), and aerosols that are not included in the TOMS algorithm. For all bands, strong positive correlations of the TOMS biases are identified with aerosol optical depth, which explains nearly 50% of the variances of TOMS biases. The more restrictive in-situ cloud screening method reduces the biases by 3.4–3.9% averaged over all sites. This suggests that the TOMS biases from the in-situ cloud contamination may account for approximately 25% for 305 nm and 50% for other bands of the total bias. The correlation coefficients between total-sky and clear-sky biases across 27 sites are 0.92, 0.89, 0.83, and 0.78 for 305, 311, 325, and 368 nm, respectively. The results show that the spatial characteristics of the TOMS retrieval biases are systematic, representative of both clear and total-sky conditions.

1 Introduction

Increasing surface ultraviolet (UV) radiation due to stratospheric ozone depletion by anthropogenic emissions has been a topic of growing interest as it is harmful to humans, livestock, agricultural crops, and forest ecosystems (Zerefos et al., 1995; Norval

Comparison of TOMS retrievals and UVMRP measurements

M. Xu et al.

Title Page

Abstract

Introduction

Conclusions

References

Tables

Figures

◀

▶

◀

▶

Back

Close

Full Screen / Esc

Printer-friendly Version

Interactive Discussion



et al., 2006; Caldwell et al., 2006; Bais et al., 2007; Denman et al., 2007). Therefore, it is necessary to establish a monitoring network along with a forecast system to provide high-quality UV information for impact studies.

In response to the surface UV increase, the United States has established several ground-based UV monitoring networks since the early 1990s (Scotto et al., 1988; Bigelow et al., 1998; Sabburg et al., 2002). The largest network is maintained by the UV-B Monitoring and Research Program (UVMRP), started by the US Department of Agriculture (USDA) in 1992. It currently includes 36 climatological sites across the U.S., predominately located in agricultural or rural areas and a few in urban and non-agricultural lands (Bigelow et al., 1998). All sites are instrumented with the same multi-filter rotating shadowband radiometer (MFRSR) that measures spectral UV global (direct sun plus diffuse sky) and diffuse irradiances in seven wavelength bands centered at 300, 305, 311, 317, 325, 332, and 368 nm with nominal 2-nm full-width-at-half-maximum (FWHM) spectral response functions (SRFs) annually calibrated by the NOAA Central Ultraviolet Calibration Facility (CUCF) (Bigelow et al., 1998; Slusser et al., 2002).

Meanwhile, satellite retrievals have been developed to estimate surface UV irradiance distribution over the globe from measured backscattered UV irradiance, accounting for the effects of stratospheric ozone, clouds, aerosols, surface albedo, and altitude (Eck et al., 1995; Krotkov et al., 1998, 2002; Herman et al., 1999). In particular, the total ozone mapping spectrometer (TOMS) onboard consecutive Nimbus 7 (1 November 1978–6 May 1993), Meteor-3 (22 August 1991–24 November 1994), and Earth Probe (22 July 1996–14 December 2005) satellites followed with the Ozone Monitoring Instrument (OMI) onboard Aura (1 October 2004 onward) have almost continuously measured UV radiances backscattered from the Earth. Surface UV irradiances have been estimated using the TOMS UV algorithm for the same wavelengths centered at 305, 310, 324, and 380 with a 0.55 nm (FWHM) triangular SRF (Herman et al., 1996, 1999; Krotkov et al., 1998, 2002; Tanskanen et al., 2007).

Satellite retrievals, desired for their daily contiguous global coverage, have been

Comparison of TOMS retrievals and UVMRP measurements

M. Xu et al.

Title Page

Abstract

Introduction

Conclusions

References

Tables

Figures

◀

▶

◀

▶

Back

Close

Full Screen / Esc

Printer-friendly Version

Interactive Discussion



Comparison of TOMS retrievals and UVMRP measurements

M. Xu et al.

[Title Page](#)[Abstract](#)[Introduction](#)[Conclusions](#)[References](#)[Tables](#)[Figures](#)[⏪](#)[⏩](#)[◀](#)[▶](#)[Back](#)[Close](#)[Full Screen / Esc](#)[Printer-friendly Version](#)[Interactive Discussion](#)

compared with ground-based spectrometer measurements at a limited number of sites (McKenzie et al., 2001; Fioletov et al., 2002, 2004; Tanskanen et al., 2007). The UVMRP narrow filter measurements (Bigelow et al., 1998; DeLuisi et al., 2003; Slusser et al., 2002) provide an additional opportunity for satellite estimated irradiance validation that has not yet been fully explored. Previous comparisons, while essential, cannot provide a systematic assessment of how the retrieval biases depend on spectral wavelengths and which sources are likely responsible (Wuttke et al., 2003). A few studies have compared TOMS irradiance retrievals with ground measurements for specific wavelengths at several sites and limited time periods. These include Slusser et al. (2002) for 305 and 368 nm at 2 UVMRP sites (NM02, OK02) in the US, Fioletov et al. (2002) for 305 and 324 nm at 10 sites in Canada, Kazantzidis et al. (2006) for 305, 310, and 324 nm at 4 stations in Europe, Kazadzis et al. (2009a) for 305, 324, and 380 nm at a European station, and Buchard et al. (2008) for 324 and 380 nm at a French site.

None of the existing studies has systematically compared the TOMS retrievals and UVMRP measurements of surface spectral UV irradiances at all matching wavelengths and available sites with long-term records. In particular, TOMS operational UV irradiances differ from UVMRP measurements in the center wavelength and/or SRFs of the spectral bands, making their direct comparison difficult and inconsistent. Thus, this study first applied a radiative transfer model to convert TOMS UV retrievals toward the center wavelengths (305, 311, 325 and 368 nm) and SRFs of UVMRP measurements. The results were then compared at 27 UVMRP sites over the continental US that have long-term records (>4 years) of high-quality data. The comparison further considers local air pollution conditions (NO_2 and SO_2) derived from satellites and uses two cloud screening methods to better identify the likely sources that are responsible for TOMS biases. These are the major aspects of this study that facilitate a more objective assessment and better understanding of TOMS retrieval biases in terms of their regional dependencies on spectral wavelengths, cloud conditions, and aerosol loadings.

In general, the biases of TOMS from UVMRP surface spectral UV irradiances can

Comparison of TOMS retrievals and UVMRP measurementsM. Xu et al.

[Title Page](#)[Abstract](#)[Introduction](#)[Conclusions](#)[References](#)[Tables](#)[Figures](#)[⏪](#)[⏩](#)[◀](#)[▶](#)[Back](#)[Close](#)[Full Screen / Esc](#)[Printer-friendly Version](#)[Interactive Discussion](#)

be attributed to four major sources: (1) retrieval uncertainties in the TOMS UV algorithm (Herman et al., 1999; Krotkov et al., 2001); (2) SRF differences (2-nm FWHM measured SRF vs. 0.55-nm analytical triangular SRF); (3) inhomogeneity effects due to large spatial and temporal variability of aerosols and clouds within a satellite pixel or TOMS grid (Herman et al., 1999; Weihs et al., 2008; Kazadzis et al., 2009b); and (4) systematic TOMS overestimations resulting from tropospheric UV-absorbing aerosols (Papayannis et al., 2005; Amirdis et al., 2005; Li et al., 2009) and tracer gases (e.g., NO₂, SO₂, and tropospheric O₃) (Zerefos et al., 2002) that were not fully incorporated in the TOMS UV algorithm (Krotkov et al., 1998; Herman et al., 1999; McKenzie et al., 2001; Fioletov et al., 2002; Kazantzidis et al., 2006; Tanskanen et al., 2007). Since source (1) is beyond the scope of this study, we attempt to address the other three sources. In particular, a re-convolution approach is developed in Sect. 3 to match the MFRSR SRFs and a new cloud screening methods is incorporated in Sect. 4 to reduce the inhomogeneity effects. The results are first compared under clear-sky conditions in Sect. 5 to determine the dependence of TOMS biases on SRFs, aerosol loadings, and geographic regions; the cloud effects are then examined in Sect. 6. In summary, the intention of this study is to provide a more complete understanding of the TOMS UV retrieval biases as concluded in Sect. 7.

2 Surface UV irradiances from UVMRP measurements and TOMS retrievals

The UVMRP data used in this study include the surface spectral global (direct sun plus diffuse sky) UV irradiance measured by the MFRSRs every 20 s and averaged to 3-min intervals (Bigelow et al., 1998), as well as the on-site total (aerosol + cloud) optical depth (TOD) retrieved by the Langley regression method (Harrison and Michalsky, 1994). Under clear-sky conditions the TOD equals the aerosol optical depth (AOD). The theoretical uncertainty for UV-MFRSR lamp calibrated irradiance is estimated at ±5.2% (Slusser et al., 2002). Figure 1 depicts the relative differences of 3-min clear-sky spectral irradiances for 325 nm between the UVMRP lamp calibration and AERONET

transferring calibration at a research site in Greenbelt, Maryland. This is the only collocated site where concurrent data for UVMRP MFRSR lamp calibration and AERONET sun-photometer transferring calibration are available. Since the AERONET transferring calibration contained a strong seasonal cycle (Krotkov et al. 2005a), the relative differences shows a similar feature, having larger values ($\pm 10\%$) in winter and smaller ones (+3–8%) in summer. Hence the total uncertainty of summertime lamp calibrated UV irradiances used in the present study is estimated within $\pm 8\%$.

In comparison, the TOMS data used in this study include the retrieved surface noon spectral UV irradiances and the modified Lambert effective TOMS reflectivity (MLER), available over the globe at $1^\circ \times 1^\circ$ grid spacing once per day near local solar noon. The reflectivity approximates surface albedo under clear-sky conditions including backscatter from aerosols. In the presence of clouds, the MLER is a weighted sum of the cloudy and clear parts. The surface irradiances are retrieved from TOMS measured backscattered UV (BUV) radiances by the TOMS UV algorithm version 8 (Herman et al., 1999; Krotkov et al., 1998, 2001). The main objective of the present study is a rigorous assessment and better understanding of the biases in the TOMS UV retrievals against the UVMRP measurements at all matching wavelengths (305, 311, 325, 368 nm).

Note that the TOMS retrievals and UVMRP ground measurements differ in spatial and temporal resolutions. The ground measurements reflect the local conditions close to the monitoring sites and provide nearly continuous time coverage, while the satellite retrievals represent the average condition in an area of about $100 \text{ km} \times 100 \text{ km}$ but only at noon. Following previous studies (e.g., Slusser et al., 2002; Fioletov et al., 2002, 2004; Kazantzidis et al., 2006; Antón et al., 2007), the UVMRP 3-minute measurements were averaged within $\pm 1 \text{ h}$ of the satellite overpass at noon as a first-order approximation to account for the spatial resolution difference at the time of TOMS overpass. Note also that it is difficult for TOMS to distinguish clouds from snow on the ground, causing well-known underestimations of surface irradiances (Krotkov et al., 2002). Thus, this study focuses on the summertime (May through September) to avoid possible contamination by snow cover at northern high-altitude sites.

Comparison of TOMS retrievals and UVMRP measurementsM. Xu et al.

[Title Page](#)[Abstract](#)[Introduction](#)[Conclusions](#)[References](#)[Tables](#)[Figures](#)[◀](#)[▶](#)[◀](#)[▶](#)[Back](#)[Close](#)[Full Screen / Esc](#)[Printer-friendly Version](#)[Interactive Discussion](#)

Comparison of TOMS retrievals and UVMRP measurements

M. Xu et al.

Title Page

Abstract

Introduction

Conclusions

References

Tables

Figures

◀

▶

◀

▶

Back

Close

Full Screen / Esc

Printer-friendly Version

Interactive Discussion



This study evaluates the most recent TOMS retrievals (with the latest correction in 2007 for sensor degradation) from the Earth Probe satellite, which provided the longest continuous data records overlapping with the UVMRP measurements. Specifically, the comparison period was from May 2000 to May 2004. After 2004, the TOMS UV retrievals were not available due to calibration problems, whereas before 2000, many UVMRP sites did not start measurements of surface spectral UV irradiance and/or concurrent cloud detections (see Sect. 4). Among the total 36 UVMRP climatological sites, 3 are located in Alaska, Hawaii, and New Zealand; 5 started after 2006; and 1 closed in 2001. Thus, only 27 sites located in the continental US and the adjacent U.S.-Canadian border were used in the comparison. Table 1 lists their site specifications, including brief descriptions.

3 Spectral re-convolution from TOMS to UVMRP bands

Because the center wavelength and/or SRF of the surface UV irradiances differ between TOMS and UVMRP, a spectral re-convolution is necessary to ensure a consistent comparison. Moreover it is unpractical and difficult for TOMS to generate the operational UV products using the center wavelengths and SRFs of MFRSR instruments to directly compare with UVMRP data, since the SRFs of MFRSR measured by the CUCF are changed annually and different for each instrument. This study chose to re-convolute the TOMS retrievals with the center wavelength and SRF identical to UVMRP measurements. The re-convolution is implemented by multiplying the TOMS UV irradiances with the SRF scaling factors as calculated below:

$$\alpha(\lambda_T, \lambda_U) = \int R(\lambda) S_U(\lambda - \lambda_U) d\lambda / \int R(\lambda) S_T(\lambda - \lambda_T) d\lambda \quad (1)$$

where S is the SRFs of the TOMS and UV-MFRSR, $R(\lambda) = \text{CMF} \times R_c(\lambda)$, CMF is the cloud modification factor, and $R_c(\lambda)$ is the clear-sky spectral irradiance modeled by DISORT (discrete ordinate radiative transfer) (Stamnes et al., 1988) with 32 streams

and 0.1 nm spectral resolution ranging from 280 to 420 nm. Since the TOMS retrieval algorithm accounts for the effect of non-absorbing aerosols (Krotkov et al., 1998; Tanskanen et al., 2007), the single scattering albedo is set to 1.0 in the $R_c(\lambda)$ calculation. S_T is the triangular spectral response function (0.55 nm FWHM) of the TOMS retrievals and S_U is the actual spectral response function (2 nm FWHM) of UVMRP measurements. λ_T is the center wavelength in TOMS retrievals (305, 310, 324, 380 nm) and λ_U is the effective wavelength of the UVMRP measurements (305, 311, 325, 368 nm).

The SRF scaling factor lookup tables were generated from Eq. (1) by the UV spectra $R(\lambda)$ estimated from DISORT in terms of varying total column ozone (200–500 DU) and solar zenith angle (0–90 degrees). Calculations showed that the scaling factors are not sensitive to non-absorbing aerosol optical depth (AOD) (relative differences of α are within 2%). Thus, the dependence of α on AOD caused a minor effect on the comparisons and was not included. The scaling factors were interpolated from the lookup tables based on the specific column ozone derived from the TOMS and the solar zenith angle determined by the geophysical information at the UVMRP site. Following the MLER cloud correction method of TOMS UV algorithm (Krotkov et al., 2001; Tanskanen et al., 2007), this study assumes that cloud modification factor CMF is independent of wavelength. As such, the SRF scaling factor is identical between clear and cloudy sky conditions, and the CMF is no longer needed for the α derivation in Eq. (1).

Figure 2 illustrates the variations of the scaling factors for the TOMS spectral irradiances at the UVMRP site IL02 at Bondville, Illinois in July 2003. As total column ozone increases, the scaling factors increase for 305 and 311 nm, decrease slightly for 325 nm, and remain nearly constant for 368 nm. The positive dependence of the scaling factors on total column ozone for 305 and 311 nm increases when the solar zenith angle increases. Note that the result shown was normalized to an ozone concentration of 300 DU.

Comparison of TOMS retrievals and UVMRP measurements

M. Xu et al.

Title Page

Abstract

Introduction

Conclusions

References

Tables

Figures

◀

▶

◀

▶

Back

Close

Full Screen / Esc

Printer-friendly Version

Interactive Discussion



4 Detection of clear versus cloudy sky conditions

To separate the cloud effects from other sources in explaining the TOMS biases, a robust clear-sky identification method is required. The conventional method was based on the TOMS measured reflectivity at 380 or 360 nm; when this value is smaller than a threshold, the grid is identified as a clear-sky condition. Such a method, hereafter referred to as TRT (TOMS reflectivity threshold), has two important drawbacks, both of which were caused by the substantially larger area size of a TOMS retrieval grid than an area around the UVMRP monitoring site. First, the choice for the threshold was subjective, ranging from small values around 0.07–0.08 (Eck et al., 1995; Herman and Celarier, 1997; Wang et al., 2000) to significantly larger ones as 0.2 (Fioletov et al., 2002). Our analysis indicated that a threshold of 0.07 would identify very few grid-wide clear-sky days. Thus the larger threshold of 0.2 as used in the recent studies was adopted for the comparison. Second, since the TOMS reflectivity represents the average condition over an entire grid cell, the use of a large threshold may allow for fractional clouds within the grid. Kazadzis et al. (2009b) demonstrated that the UV irradiance differences among three sites within a single OMI pixel were up to 100% under partial clouds. Weihs et al. (2008) also showed that, within one OMI pixel, the UV erythemal dose deviated up to as much as $\pm 10\%$ under partial cloud covers and differed by 20% due to the AOD spatial variability alone.

This study, therefore, incorporates a new cloud screening method based on Long and Ackerman (2000) to better detect clear-sky conditions (hereafter referred to as L&A). The method was previously implemented by Xu et al. (2006) to isolate clear-sky conditions for evaluating radiative transfer model performance against the UVMRP measurements. In contrast to the region-specific and subjective TRT method, the L&A technique is site-specific and objective as it utilizes both global and diffuse surface downwelling broadband solar irradiances measured by UVMRP VIS-MFRSR at the unfiltered silicon photodiode band (Bigelow et al., 1998). The technique involves four individual tests for the total and diffuse shortwave irradiances. Only the measurements

Comparison of TOMS retrievals and UVMRP measurements

M. Xu et al.

Title Page

Abstract

Introduction

Conclusions

References

Tables

Figures

◀

▶

◀

▶

Back

Close

Full Screen / Esc

Printer-friendly Version

Interactive Discussion



that pass all four tests are identified as representing clear-sky conditions. The L&A method can effectively eliminate all cloudy cases that were observed on-site by the MFRSR. It is, however, too restrictive such that clear skies with haze can also be excluded, causing the result biased toward low aerosol loading cases (Augustine et al., 2008). The comparison results of the TRT and L&A methods are presented in Sect. 6.

5 Spectral, aerosol, and regional dependences of clear-sky irradiance biases

Figure 3 illustrates the relative mean $RM=MD/M_{TOMS}$ and deviation $RD=SD/M_{TOMS}$ statistics of the noontime spectral (305, 311, 325, 368 nm) irradiance differences between TOMS retrievals and UVMRP measurements at 27 sites under clear-sky conditions using the TRT cloud screening method during the summer periods (May–September) of 2000–2004. Here MD and SD are the temporal mean and standard deviation of the TOMS minus UVMRP daily differences; and M_{TOMS} is the mean of all TOMS daily irradiances. The use of the TOMS rather than the UVMRP mean as the denominator for normalization is mainly to facilitate the result comparison with previous studies. The RM statistic measures the systematic tendency of TOMS biases, while the RD statistic depicts the corresponding fluctuations due to local variability of aerosol loading (Arola et al., 2005), air pollution, and cloud contamination (Kazantzidis et al., 2006). Also shown are total (aerosol+cloud) optical depth (equivalent to AOD for a clear sky) and the total number of clear-sky days (i.e., samples used in the above statistics).

Figure 3a shows that the TOMS clear-sky irradiances contain systematic positive biases <20% for 305 nm and <10% for longer wavelengths at nearly all monitoring sites. When averaged over 27 UVMRP sites, RM for 305, 311, 325, and 368 nm are respectively 15.4, 7.9, 7.6, and 7.0% (Table 2). To our knowledge, only four other studies have compared TOMS/OMI UV retrieval biases among spectral bands. Fioletov et al. (2002) showed average TOMS clear-sky biases of 11.9% for 305 nm and 9.5% for 324 nm relative to ground-based Brewer UV spectrometers at 10 Canadian sites;

Comparison of TOMS retrievals and UVMRP measurements

M. Xu et al.

Title Page

Abstract

Introduction

Conclusions

References

Tables

Figures

◀

▶

◀

▶

Back

Close

Full Screen / Esc

Printer-friendly Version

Interactive Discussion



Comparison of TOMS retrievals and UVMRP measurements

M. Xu et al.

[Title Page](#)[Abstract](#)[Introduction](#)[Conclusions](#)[References](#)[Tables](#)[Figures](#)[⏪](#)[⏩](#)[◀](#)[▶](#)[Back](#)[Close](#)[Full Screen / Esc](#)[Printer-friendly Version](#)[Interactive Discussion](#)

Kazantzidis et al. (2006) estimated the OMI total-sky (clear and cloudy) biases from 4 European sites as 19.4, 15.8, and 11.0% for 305, 310, and 324 nm respectively; Buchard et al. (2008) obtained the clear-sky biases at one French site as 6.4% and 3.7% for 324 and 380 nm; Kazadzis et al. (2009a) calculated the OMI biases at one Greece site for 305, 324, and 380 nm as 21.3, 13.0, 9.9% for clear-sky and 23.1, 14.5, 11.5% for total-sky conditions, respectively. Our results compared well to those other findings.

Figure 3b depicts the relative bias deviations RD falling below 15% at all sites except for ON02 and FL02; smaller values (<10%) are obtained at SK02, UT02, NM02, TX02, NE02, OK02, MI02, and IN02. The RD averaged over 27 sites have a small range among the 4 wavelengths from 11.4 to 9.9% (Table 2), indicating that the fluctuations due to local daily variability are similar across the UV spectral range.

Two important conclusions from Fig. 3 require more comprehensive diagnosis to understand their causes. First, TOMS biases of clear-sky surface UV irradiances exhibit significant spectral contrasts, where overestimation for 305 nm is approximately twice that of those for other bands. Second, the biases also reveal substantial variations across the monitoring sites, with a strong regional dependence. While TOMS bias dependence on location was mentioned in previous studies (Fioletov et al., 2004), the spectral differences reported here are larger (comparing with Fioletov et al., 2002 and Kazantzidis et al., 2006). We will examine the biases in more details in the following sections to identify the likely explanation.

5.1 Data compatibility issues

Surface UV measurements were taken at the ground mainly by two types of instruments: filter MFRSR and Brewer spectrophotometers. The previous TOMS UV retrieval product (version 7) was used widely against ground-based UV measurements before August, 2004 when the version 8 data was released. To facilitate the comparison of the TOMS retrieval biases (with different TOMS UV products) against MFRSR and Brewer measurements, we considered specific sites in Canada (ON02, Toronto;

SK02, Regina, 3.14 km) that had measurements from both instruments and also available TOMS-Brewer comparisons in the literature. Fioletov et al. (2002) showed that the clear-sky TOMS-Brewer biases for 305 and 324 nm are respectively 14.5 and 10.1% at ON02, and 10.6% and 9.5% at SK02. The corresponding TOMS-MFRSR biases from this study are 17.6% and 8.5% at ON02, and 18.6% and 8.4% at SK02. Except for 305 nm at SK02, the biases between TOMS-Brewer and TOMS-MFRSR are similar (within 3%). They can be attributed to instrument calibration uncertainties, about 6% for the Brewer (Sabburg et al., 2002) and 5–8% for the MFRSR (Slusser et al., 2002).

The larger difference (8%) between the TOMS-Brewer and TOMS-MFRSR biases for 305 nm at SK02 is not likely caused by a different sky view or topographic effects, since the instruments are located on flat terrain with a distance of only 3.14 km. We speculate that it may result from the use of the different TOMS retrieval products, between versions 7 for Fioletov et al. (2002) and 8 for this study. Given the lack of direct comparison in spectral irradiances, an estimate may be made from the comparison of erythemal irradiances between the TOMS versions and Brewer measurements. Since the erythemal irradiance is integrated from the UV spectrum with larger weights at short wavelengths <310 nm (McKinlay and Diffey, 1987), the difference of TOMS-Brewer erythemal irradiance biases between versions 7 and 8 is a reasonable approximate for that at 305 nm. The total-sky erythemal radiation bias at SK02 is 12% for version 8 (Fioletov et al., 2004), which is significantly larger than 7.9% for version 7 (Fioletov et al., 2002).

5.2 Spectral dependence

The relative mean biases RM at 305 nm are systematically higher than the other three spectral bands at all sites (Fig. 3a), with average enhancement factors of 1.9, 2.0, and 2.2 relative to the 311 nm, 325 nm, and 368 nm, respectively. The correlation coefficients among the 27 sites between RM at 305 nm and other bands are 0.82, 0.86, and 0.75, suggesting a strong spatial coherence that persists across the UV spectral ranges. Thus, the sources responsible for the TOMS biases must be common to all sites, but also amplified near 305 nm. One obvious candidate is the absorbing

Comparison of TOMS retrievals and UVMRP measurements

M. Xu et al.

Title Page

Abstract

Introduction

Conclusions

References

Tables

Figures

◀

▶

◀

▶

Back

Close

Full Screen / Esc

Printer-friendly Version

Interactive Discussion



aerosols, which have important effects on surface irradiances across all UV spectral ranges while increasing their absorption cross section at shorter wavelengths (Krotkov et al., 2005b; Arola et al., 2005; Kazantzidis et al., 2006). The current TOMS UV algorithm corrects only the effects of elevated plumes of smoke and dust detectable by the TOMS absorbing Aerosol Index (AI) data, Krotkov et al., 1998), but does not account for other boundary layer aerosol absorption effects, and thus likely overestimates surface irradiances at locations in which absorbing aerosols are abundant with the expected amplification at 305 nm. Unfortunately, there were no concurrent measurements of absorbing aerosol optical thickness or known aerosol properties at MFRSR sites to confirm that.

Another possible contributing source of the bias is UV absorption by tropospheric pollutant trace gases, including SO₂ (Krotkov et al., 2006; Fioletov et al., 2002) and tropospheric O₃ (Brühl and Crutzen, 1989), that is strong at 305 nm but negligible at longer wavelengths (Fioletov et al., 2002). Should this be the case, the RMdifferences between 305 and 368 nm may depict the effects of trace gases on the surface irradiances at 305 nm that were not included in the TOMS UV algorithm. The differences are especially large (12–15%) at sites SK02, GA02, LA02, IN02, and MD02, as compared with the average of 7% over the remaining sites. These sites are located near heavy air pollution areas where high concentrations of trace gases are present in the boundary layer.

Figure 4 compares the RMdifferences between 305 and 368 nm with total tropospheric SO₂ abundances. Given the lack of concurrent data covering the whole US at any specific time, the climatological summer (May–September) mean SO₂ geographic distributions were constructed from the available years (2004–2008) of the SCIAMACHY (Scanning Imaging Absorption Spectrometer for Atmospheric Cartography) monthly retrievals at a grid spacing of 0.25° (~27.5 km) (TEMIS, 2006). They were bilinearly interpolated to obtain the total SO₂ abundances at all UVMRP sites. Figure 4 shows a definite positive correspondence between the RM differences and SO₂ abundances, with a correlation coefficient of 0.6. This is statistically significant at

Comparison of TOMS retrievals and UVMRP measurements

M. Xu et al.

Title Page

Abstract

Introduction

Conclusions

References

Tables

Figures

◀

▶

◀

▶

Back

Close

Full Screen / Esc

Printer-friendly Version

Interactive Discussion



Comparison of TOMS retrievals and UVMRP measurements

M. Xu et al.

[Title Page](#)[Abstract](#)[Introduction](#)[Conclusions](#)[References](#)[Tables](#)[Figures](#)[◀](#)[▶](#)[◀](#)[▶](#)[Back](#)[Close](#)[Full Screen / Esc](#)[Printer-friendly Version](#)[Interactive Discussion](#)

the 99% confidence level¹, suggesting that the SO₂ effect plays a notable role in the bias enhancement at 305 nm and the variance of the SO₂ explains 36% variance of the RM differences. Note that there are two high altitude sites (square points in Fig. 4) located on the top of mountains at the elevation of 3220 m (CO12) and 2073 m (AZ02) where the satellite retrieved total SO₂ abundances may have big uncertainties. The correlation coefficient remains 0.6 if excluding two sites, but increases to 0.8 if assuming their SO₂ abundance close to background level (near zero) because of a generally clean environment at high elevations.

On the other hand, the radiative absorption of the tropospheric NO₂ increases gradually from 305 to 368 nm (Krotkov et al., 2005c). Thus the NO₂ absorption cannot directly explain the enhancement of the bias at 305 nm, although NO₂ contributes to the TOMS biases over polluted sites at the longer UVA wavelengths. In addition, NO₂ is a key precursor for O₃ production generally with strong positive correspondence in rural areas (Seinfeld and Pandis, 1998; Tao et al., 2003), and the O₃ absorption increases in the UVB (280–315 nm). Given the lack of data for the tropospheric O₃ abundances, NO₂ may be used as an indirect measure of the O₃ effect on the spectral enhancement. To quantify such contribution, the Global Ozone Monitoring Experiment (GOME) (2000–2003) and SCIAMACHY (2003–2004) monthly retrievals at a grid spacing of 0.25° (~27.5 km) (Boersma et al., 2004) were bilinearly interpolated to obtain the total NO₂ abundances at all UVMRP sites. Table 3 lists the correlation coefficients of RM with SO₂ and NO₂ across 27 UVMRP sites for all spectral bands. The RM correlations with the SO₂ abundances are 0.58 for 305 nm and 0.43 for 311 nm, statistically significant at respectively the 99% and 95% confidence level. The corresponding correlations with the NO₂ abundances are 0.42 and 0.41, significant at the 95% confidence level. However, the RM correlations with the SO₂ and NO₂ abundances for 325 and 368 nm are insignificant as expected.

¹ Assuming independence between data from different sites, there are 25 degrees of freedom and the corresponding threshold for correlations to be statistically significant at the 95% (99%) confidence level is 0.38 (0.49).

Comparison of TOMS retrievals and UVMRP measurements

M. Xu et al.

Note that the correlation coefficient between the SO₂ and NO₂ abundances itself is 0.58, significant at the 99% confidence level. This positive correspondence may partially explain the medium correlation between RM and NO₂ amounts for 305 and 311 nm and suggest similar emission sources (e.g., power plant emissions) dominating the tropospheric abundances of both pollutants. According to the US Environmental Protection Agency (<http://www.epa.gov/air/emissions/index.htm>), the primary SO₂ source was from electricity generation at coal-burning power plants that accounted for 71% of the total US emissions in 2002, while the major NO₂ sources were from road vehicles (38%) and electricity generation (22%). Since most UVMRP sites are located in agricultural areas, the mobile source is relatively small, and hence the electricity generation may become the dominant source also for NO₂.

Kazantzidis et al. (2006) found that TOMS UV retrieval biases under total-sky conditions at 4 European sites gradually decreased as the wavelength increased from 305 to 310 to 324 nm. In contrast, only 2 UVMRP sites (MT02, ON02) were identified with a similar feature under clear-sky conditions. Our result averaged from 27 UVMRP sites showed a sharp RM drop (by almost half) from 305 to 311 nm and small changes beyond that. Even excluding the remote or clean-air sites (their Sondankyla and our NM02, AZ02, CO12) where TOMS biases are considerably low, the result remains significantly different: Kazantzidis et al. (2006) estimated the total-sky biases at 3 sites as 21.9, 18.4, and 13.0% for 305, 310, and 324 nm, respectively, whereas our clear-sky calculations from 24 sites are 16.8, 9.0, 8.3% at 305, 311, 325 nm (Table 2). This contrast cannot be attributed to the obvious difference between their total and our clear-sky conditions. In fact, our total-sky result (see details in Sect. 6) reveals a similar spectral dependence, with biases of 17.6, 10.4, and 8.8% for 305, 311, and 325 nm, respectively (Table 2). They are systematically larger than the clear-sky biases across the UV spectral range. We speculate that the contrast in the spectral dependence between the two studies may result from the use of different instruments. Also the uncertainty of the scaling factors for the re-convolution due to total column ozone errors may partially contribute to the above contrast.

[Title Page](#)[Abstract](#)[Introduction](#)[Conclusions](#)[References](#)[Tables](#)[Figures](#)[◀](#)[▶](#)[◀](#)[▶](#)[Back](#)[Close](#)[Full Screen / Esc](#)[Printer-friendly Version](#)[Interactive Discussion](#)

5.3 Aerosol dependence

Figure 3a also illustrates the mean AODs retrieved at UVMRP sites by the Langley regression method (Harrison and Michalsky, 1994). The correlation coefficients between RM and AODs across 27 sites are 0.53, 0.49, 0.60, and 0.75 for 305, 311, 325, and 368 nm, respectively. They are statistically significant at the 99% confidence level. Thus, the TOMS retrieval biases in surface UV irradiances are significantly large at the sites where AODs are high. The largest biases are found at 3 sites near heavy pollution areas, GA02, LA02, and MD02, where the RM values at 305 nm exceed 20%. On the other hand, there are 3 clean-air sites, AZ02, CO12, and NM02, where small or even negative biases (within $\pm 5\%$) are obtained. Note that the correlation coefficient of RM with AOD increases from 311 nm to 325 nm to 368 nm. This indicates the increasing relative contribution of aerosols to the TOMS retrieval biases at the longer wavelengths, where trace gases (SO_2 , O_3) and Rayleigh scattering have a relative smaller effect.

Krotkov et al. (2005b) suggested that TOMS biases should be better correlated with the aerosol absorbing optical depth (AAOD), since the TOMS UV retrieval algorithm does account for aerosol/cloud scattering in the boundary layer. Given the lack of concurrent data, the climatological summer (May–September) mean AAOD values were averaged from daily mean OMI retrievals at 388 nm of all available years (2004–2008) (Torres et al., 2007). The correlation coefficients between TOMS RM and OMI AAOD across the 27 sites are 0.33, 0.35, 0.32, and 0.29 for 305, 311, 325, and 368 nm, respectively (Table 3). The corresponding correlation of the RM difference between 305 and 368 nm with AAOD is only 0.23. They all are statistically not significant. This weak correspondence may, however, result from weak sensitivity of the OMI AAOD to boundary layer aerosols (Martin, 2008) and other data quality problems (Li et al., 2009), including uncertainties in TOMS irradiance and OMI AAOD retrievals and differences in their data periods. The issue should be revisited when high-quality concurrent AAOD data become available.

Figure 5 compares the temporal correlation coefficients between daily relative differ-

Comparison of TOMS retrievals and UVMRP measurements

M. Xu et al.

Title Page

Abstract

Introduction

Conclusions

References

Tables

Figures

◀

▶

◀

▶

Back

Close

Full Screen / Esc

Printer-friendly Version

Interactive Discussion



Comparison of TOMS retrievals and UVMRP measurementsM. Xu et al.

ences between TOMS retrievals and UVMRP measurements and AODs at individual sites. Correlations are highly positive, exceeding 0.75 for MT02, CO02, AZ02, ME12, MS02 and FL02; and the medium positive correlations (0.5–0.7) at all other sites except for CA02, OK02, ON02, NE02, and GA02. The relative medium and low correlations at those sites are likely due to the effects of aerosol optical properties such as single scattering albedo or cloud contamination or the uncertainty of UVMRP AODs derived by the Langley regression method (Krotkov et al., 2005a; Corr et al., 2009; Li et al, 2009). Kazantzidis et al. (2001) showed that a decrease of 0.1 in aerosol single scattering albedo decreases the ratio of modeled and measured surface UV irradiance by 7%–14%, depending on solar zenith angle. Balis et al. (2004) found that different aerosol types (hence optical properties) can cause surface UV irradiances to differ up to 10%. As discussed in Sect. 6, ON02 and GA02 are also highly contaminated by the presence of partial clouds.

The above result confirms the finding from previous studies that TOMS biases in surface UV irradiances increase with aerosol loadings (Krotkov et al., 1998; McKenzie et al., 2001; Fioletov et al., 2002; Kazantzidis et al., 2006; Tanskanen et al., 2007; Antón et al., 2007; Buchard et al., 2008). This indicates that the TOMS UV algorithm does not fully incorporate the aerosol effects on UV absorption. The net effect may explain nearly 50% of the variances of the TOMS biases at most sites or across the UVMRP network.

5.4 Regional dependence

The relative mean biases RM vary greatly among the 27 sites distributed in various climatic regions of the US and Canada (Fig. 3a). The RM ranges from 3.3% (AZ02) to 23.6% (LA02) for 305 nm; from –3.4% (NM02) to 20.6% (LA02) for 311 nm; from 0.4% (AZ02) to 16.0% (LA02) for 325 nm; and from –0.9% (NM02) to 13.6% (FL02) for 368 nm. The standard deviations of the RM values across the 27 UVMRP sites are 5.1, 5.2, 3.5, and 2.9% at 305, 311, 325, and 368 nm, respectively. They are much larger than those over 10 sites of the Canadian Ozone and Monitoring Network, which

[Title Page](#)[Abstract](#)[Introduction](#)[Conclusions](#)[References](#)[Tables](#)[Figures](#)[◀](#)[▶](#)[◀](#)[▶](#)[Back](#)[Close](#)[Full Screen / Esc](#)[Printer-friendly Version](#)[Interactive Discussion](#)

were only 1.8% at 305 nm and 0.7% at 324 nm as shown by Fioletov et al. (2002). As discussed above, the TOMS biases are mainly associated with the abundances of absorbing aerosols and trace gases. The large range of TOMS biases over the UVMRP network results from the large spatial variability of aerosol loadings and air pollution in the US. The small range of the TOMS biases over the Canadian network (Fioletov et al., 2002) is likely because all sites are located at high latitudes within a climate region with similar aerosol loadings and air pollution.

Given the above rationale, we can now explain the regional dependence of the TOMS biases, focusing on 305 nm. In the Southeast (LA02, MS02, GA02, FL02, MD02), biases are larger than 20%, highest among the entire UVMRP network. This region is characterized by heavy pollution with large SO₂, NO₂ and O₃ abundances as well as heavy aerosol loadings along with high humidity enhancing AOD. Aerosols emitted from wildfires in Mexico may also be transported into the region during early summer. These pollutants and aerosols could act to enhance the TOMS biases as their radiative absorption has not been incorporated in the retrieval algorithm. In the Northeast (ON02, NY02, VT02, ME12), biases are above 17%, most likely due to heavy pollution, which may result from local emissions and transports from remote sources in the Midwest and Canada. In the Midwest (MN02, WI02, IL02, MI02, IN02), biases are about 15%, attributed largely to heavy pollution of regional sources. The upwind MN02 site has less bias compared with the downwind IN02, suggesting a certain role of pollutant transport. In the Southwest (CA02, CA22, NM02, AZ02, TX02), with prevailing dry and clear-sky conditions, biases depend mainly on air pollution. At the remote and high altitude AZ02 and NM02 sites with clean air, biases are small, within ±5%. In contrast, at CA02, about 15 miles west of Sacramento, biases are large (16%). At CA22 and TX02, biases are also large (14% and 15%), which may be associated with air pollution emitted from local sources and remotely transported from Mexico. In the Northwest and Rocky Mountain areas (WA02, MT02, CO02, CO12, UT02, SK02), biases are possibly influenced by active wildfires and occasional dust transport from Asia. One exception is CO12, on a mountain top of 3200 m elevation, where biases are small (<6%) as local

Comparison of TOMS retrievals and UVMRP measurements

M. Xu et al.

[Title Page](#)[Abstract](#)[Introduction](#)[Conclusions](#)[References](#)[Tables](#)[Figures](#)[⏪](#)[⏩](#)[◀](#)[▶](#)[Back](#)[Close](#)[Full Screen / Esc](#)[Printer-friendly Version](#)[Interactive Discussion](#)

air is very clean. In the Central Plains (NE02, OK02), biases are likely due to aerosols emitted by regional wildfires and gases transported from polluted areas upwind.

6 Cloud detection effects and total-sky surface UV

Figure 6 illustrates the relative mean RM and deviation RD of the noontime spectral (305, 311, 325, 368 nm) irradiance biases by TOMS retrievals from UVMRP measurements at 27 sites under clear-sky conditions using the L&A cloud screening method during 2000–2004 summers (May–September). The L&A method is more restrictive than the TRT method, detecting a much smaller number of clear-sky days. In particular, the number of samples so screened is small (<60), and hence the result is not shown at CA22, FL02, GA02, or ON02. As Fig. 6a is compared with Fig. 3a, the relative mean biases of TOMS are reduced at all monitoring sites and spectral bands. On average over the corresponding 23 sites, the RM reductions for 305, 311, 325, and 368 nm are respectively 3.5, 3.9, 3.4, and 3.6%, with little spectral dependence (Table 2).

When the L&A cloud screening method is used, more monitoring sites and/or spectral bands were identified with small or negative RM biases. They usually are located in remote areas with low aerosol loadings. The cloud contamination using the TRT method can be clearly depicted by the result that AOD in Fig. 3a is substantially larger than those in Fig. 6a. On average over all sites, the clear-sky AOD is reduced from 0.58 to 0.23 by using the L&A rather than the TRT cloud screening method. This suggests that a large portion of the samples may be contaminated by the occurrences of fractional clouds, although not overcast conditions. The reduction is also seen in the relative bias deviations RD, which are now 8.8, 8.5, 7.2, and 6.5%, respectively, for 305, 311, 325, and 368 nm as averaged over all 23 sites. The net reduction in RD due to change from TRT to L&A is about 2.3–2.9% (see Table 2), again with little spectral dependence.

Figure 7 depicts relative mean RM and deviation RD of the noontime spectral (305, 311, 325, 368 nm) irradiance biases by TOMS retrievals from UVMRP measurements

Comparison of TOMS retrievals and UVMRP measurements

M. Xu et al.

Title Page

Abstract

Introduction

Conclusions

References

Tables

Figures

◀

▶

◀

▶

Back

Close

Full Screen / Esc

Printer-friendly Version

Interactive Discussion



at 27 sites under total-sky conditions during 2000–2004 summers (May–September). On average over all 27 sites, the TOMS retrieval biases in total-sky irradiances for 305, 311, 325, and 368 nm are, respectively, 16.5, 9.5, 8.5, and 7.8% (Table 2). As compared with the clear-sky result in Fig. 3a, the relative mean biases RM under total-sky conditions have small increases, by 1.1, 1.6, 0.9, and 0.8% for the 4 bands on average over 27 sites. Larger increases were shown at sites CO12 (9.5%) and VT02 (4.8%), where more frequent clouds may actually block the skies and reduce the direct irradiances measured by the UVMRP instruments. The impact of clouds is more significant on relative bias deviations RD, which are increased by 5.5, 5.5, 5.8, and 6.1% at 305, 311, 325, and 368 nm, respectively, on average over 27 sites as compared with the clear-sky result in Fig. 3b. Such RD increases under total-sky conditions are mainly caused by the dominant role of daily cloud variability on surface UV irradiances (Fioletov et al., 2002; Kazantzidis et al., 2006).

Note that the correlation coefficients between relative mean biases RM and total optical depths TODs across 27 sites under total-sky conditions are 0.62, 0.53, 0.48, and 0.53 for 305, 311, 325, and 368 nm, respectively. As compared with the clear-sky result, all correlations remain statistically significant at the 99% confidence level; while the values are increased by 0.09 and 0.04 for 305 and 311 nm and decreased by 0.12 and 0.22 for 325 and 368 nm. Since cloud water has negligible UV absorption and its direct scattering effect has already been included in the retrieval algorithm, the correlation of the TOM biases with the cloud optical depth is supposed to be small. As such, the correlation of the TOMS biases with TOD is expected to be smaller than that with AOD for all spectral bands under cloudy conditions. The existence of clouds, however, also enhances the atmospheric photon path due to multiple scattering and thus the UV absorption by ozone and aerosols, which tends to be stronger in UVB than UVA (Mayer et al., 1998). This indirect effect may explain the correlation increase in the UVB. In addition, the correlation coefficients of RM between total-sky and clear-sky across 27 sites are 0.92, 0.89, 0.83, and 0.78 for 305, 311, 325, and 368 nm, respectively. These values are very large, indicating that the spatial characteristics of

**Comparison of TOMS
retrievals and UVMRP
measurements**M. Xu et al.

[Title Page](#)[Abstract](#)[Introduction](#)[Conclusions](#)[References](#)[Tables](#)[Figures](#)[⏪](#)[⏩](#)[◀](#)[▶](#)[Back](#)[Close](#)[Full Screen / Esc](#)[Printer-friendly Version](#)[Interactive Discussion](#)

the TOMS retrieval biases of surface UV irradiances are systematic, representative of both clear and total-sky conditions. The gradual decrease of the correlations between total-sky and clear-sky biases from 305 to 368 nm is consistent with the decreasing indirect effect of aerosol absorption due to cloud scattering enhancement.

7 Summary

This study evaluates surface noontime spectral UV irradiances during the summer (May–September) of 2000–2004 from TOMS satellite retrievals against the MFRSR ground measurements at 27 UVMRP climatological sites. The TOMS retrievals are re-convoluted to match the spectral bands of the UVMRP measurements at 305, 311, 325, and 368 nm using the DISORT radiative transfer model. The scaling factor for the re-convolution depends on total column ozone and solar zenith angle. The major results are summarized as follows.

The relative mean biases RM of TOMS spectral irradiances against the MFRSR measurements for 305 and 325 nm are in good agreement with those against the Brewer measurements of the Canadian network (Fioletov et al., 2002) at two collocated UVMRP sites (ON02, SK02) under clear-sky conditions. The differences between the TOMS-MFRSR biases and TOMS-Brewer biases are within the calibration uncertainty of the two instruments. One exception is for 305 nm at SK02, where the large difference (8%) between the TOMS-Brewer and TOMS-MFRSR biases may be due to changes in the TOMS retrieval products from version 7 to 8.

Under clear-sky conditions, the TOMS biases against the UVMRP measurements vary substantially across the 27 sites. Such variability is mainly caused by local aerosol loadings and tropospheric abundances of gaseous pollutants such as SO₂, NO₂, and O₃. For the 4 spectral bands at 305, 311, 325, and 368 nm, correlations of RM with AOD across UVMRP sites are strongly positive, with coefficients of 0.53, 0.49, 0.60, and 0.75, all statistically significant at the 99% confidence level. The corresponding temporal correlations at individual sites are also highly positive. Thus, the TOMS biases

Comparison of TOMS retrievals and UVMRP measurements

M. Xu et al.

Title Page

Abstract

Introduction

Conclusions

References

Tables

Figures

◀

▶

◀

▶

Back

Close

Full Screen / Esc

Printer-friendly Version

Interactive Discussion



increase with local aerosol loadings, which explains nearly 50% of the variances.

The tropospheric gaseous pollutants SO_2 , NO_2 , and O_3 are known for their strong absorption in the UV spectrum. Given the lack of data for the tropospheric O_3 abundances, NO_2 may be used as an indirect measure of the O_3 effect on the TOMS spectral biases in the rural areas. The correlations of the TOMS relative mean biases with local SO_2 abundances across the 27 sites are 0.58, 0.42, 0.33, and 0.30 at 305, 311, 325, and 368 nm, respectively. The corresponding correlations with local NO_2 abundances are 0.42, 0.41, 0.30, and 0.34. They are statistically significant at the confidence level of 99% (95%) for SO_2 at 305 (311) nm, but of 95% for NO_2 at both 305 and 311 nm. The correlations for the other two bands are not significant. This result provides the first quantitative measure for the spectral dependence of the TOMS biases on local SO_2 and NO_2 abundances. In addition, the correlation between the NO_2 and SO_2 abundances across the 27 sites is 0.6, significant at the 99% confidence level. This suggests that these two pollutants at the UVMRP sites may result from similar emissions sources.

The TOMS biases vary with wavelengths. The RM at 305 nm are systematically higher than other three spectral bands at all sites, with the average enhancement factor of 1.9, 2.0, and 2.2 for 311, 325, and 368 nm, respectively. Such bias enhancement may likely result from the spectral dependence of the SO_2 , which is substantial at 305 nm but small for other bands. There exists a strong correspondence of the RM differences between 305 and 368 nm with local SO_2 abundances. Their correlation coefficient across the 27 sites is 0.6, significant at the 99% confidence level. On the other hand, the correlation with AAOD is not significant (0.23), which may result from weak sensitivity of the OMI AAOD to boundary layer aerosols and other data quality issues. Furthermore, the uncertainty of the scaling factors for the re-convolution due to total column ozone errors may partially contribute to the above contrast.

The use of a more restrictive local-specific cloud screening method (L&R) causes a net reduction in relative mean biases by 3.4–3.9% on average over all sites as compared with the conventional method (TRT). This suggests that the TOMS biases due to

Comparison of TOMS retrievals and UVMRP measurements

M. Xu et al.

Title Page

Abstract

Introduction

Conclusions

References

Tables

Figures

◀

▶

◀

▶

Back

Close

Full Screen / Esc

Printer-friendly Version

Interactive Discussion



Comparison of TOMS retrievals and UVMRP measurements

M. Xu et al.

cloud contamination within a TOMS grid may account for approximately 25% for 305 nm and 50% for other bands of the total bias. Averaged over all 27 sites, the TOMS retrieval biases in total-sky irradiances for 305, 311, 325, and 368 nm are 16.5, 9.5, 8.5, and 7.8%, respectively. They are enhanced by 1.1, 1.6, 0.9, and 0.8% as compared with the clear-sky values. The small increase of the correlation between the total-sky RM and total optical depth in UVB as compared with the clear-sky result shows the effect of cloud enhancement for the UV absorption. The correlation coefficients between total-sky and clear-sky RM across 27 sites are 0.92, 0.89, 0.83, and 0.78 for 305, 311, 325, and 368 nm, respectively. The result indicates that the spatial characteristics of the TOMS retrieval biases are systematic, representative of both clear and total sky conditions.

The above results may be limited by the availability and quality of the data. In particular, as comprehensively reviewed by Li et al. (2009), the global mean AOD over ocean from several prominent aerosol products differ substantially, with the overall range of discrepancy amounting to about 50% of the mean AOD. The AOD values retrieved at the UVMRP sites over land is expected to have much larger uncertainties. We have used AOD instead of AAOD to diagnose the dependence of the TOMS biases on UV radiative absorption of aerosols, mainly because of the difficulty in obtaining direct in situ measurements and the uncertainty in satellite retrievals of AAOD. Most recently, AAOD has been retrieved from the MFRSR measurements at some sites as combined with observations by other instruments (Goering et al., 2005; Krotkov et al., 2005b; Corr et al., 2009). Using new retrievals is necessary to revisit the spectral dependence of the TOMS biases on absorbing aerosol loadings.

Nonetheless, our comparison indicates that the in situ measurements, like those from the UVMRP network, are indispensable in monitoring the atmospheric states and never replaceable by space-based remote sensing retrievals. Our findings of this study can be applied to improve the satellite UV retrieval algorithm for the latest OMI as it is a heritage and extension of that for TOMS. In this regard, a future study will focus on the evaluation of the OMI spectral irradiance retrievals against the UVMRP measurement

[Title Page](#)[Abstract](#)[Introduction](#)[Conclusions](#)[References](#)[Tables](#)[Figures](#)[◀](#)[▶](#)[◀](#)[▶](#)[Back](#)[Close](#)[Full Screen / Esc](#)[Printer-friendly Version](#)[Interactive Discussion](#)

once the Level-3 (global gridded) satellite data become available.

Acknowledgements. The authors thank the TOMS team for the UV product and the TEMIS team for the SO₂ and NO₂ data. We are grateful to two anonymous reviewers for instructive suggestions (one with detailed discussions on aerosol retrieval uncertainties) that help a more concise presentation. We also thank Omar Torres for providing the OMI Level-3 aerosol product. This research was supported by the United States Department of Agriculture UV-B Monitoring and Research Program (UVMRP) grant to the University of Illinois at Urbana-Champaign (AG CSU G-1502-5). We thank John Davis, Becky Olson, Gwen Scott, and George Janson from UVMRP for providing the ground UV in situ measurements and valuable discussions. The data processing was mainly conducted at the NCSA/UIUC supercomputing facility. The views expressed are those of the authors and do not necessarily reflect those of the sponsoring agencies or the Illinois State Water Survey.

References

- Amiridis V., Balis, D., Kazadzis, S., Bais, A., Giannakaki, E., Papayannis, A., and Zerefos, C.: Four-year aerosol observations with a Raman lidar at Thessaloniki, Greece in the framework of EARLINET, *J. Geophys. Res.*, 110, D21203, doi:10.1029/2005JD006190, 2005.
- Antón, M., Cachorro, V. E., Vilaplana, J. M., Krotkov, N. A., Serrano, A., Toledano, C., de la Morena, B., and Herman, J. R.: Total ozone mapping spectrometer retrievals of noon erythema-CIE ultraviolet irradiance compared with Brewer ground-based measurements at El Arenosillo (southwestern Spain), *J. Geophys. Res.*, 112, D11206, doi:10.1029/2006JD007254, 2007.
- Arola, A., Kazadzis, S., Krotkov, N., Bais, A., Gröbner, J., and Herman, J. R.: Assessment of TOMS UV bias due to absorbing aerosols, *J. Geophys. Res.*, 110, D23211, doi:10.1029/2005JD005913, 2005.
- Augustine, J., Hodges, G., Dutton, E., Michalsky, J., and Cornwall, C.: An aerosol optical depth climatology for NOAA's national surface radiation budget network (SURFRAD), *J. Geophys. Res.*, 113(D11), D11204, doi:10.1029/2007JD009504, 2008.
- Bais, A.F., Lubin, D., Arola, A., Bernarhd, G., Blumthaler, M., Chubarova, N., Erlick, C., Gies, H. P., Krotkov, N., Lantz, K., Mayer, B., McKenzie, R. L., Piacentini, R., Seckmeyer, G., Slusser, J. R., Zerefos, C., Fioletov, V., Groebner, J., Kyro, E., and Slaper H.: World Meteorological

Comparison of TOMS retrievals and UVMRP measurements

M. Xu et al.

Title Page

Abstract

Introduction

Conclusions

References

Tables

Figures

◀

▶

◀

▶

Back

Close

Full Screen / Esc

Printer-friendly Version

Interactive Discussion



Comparison of TOMS retrievals and UVMRP measurements

M. Xu et al.

[Title Page](#)[Abstract](#)[Introduction](#)[Conclusions](#)[References](#)[Tables](#)[Figures](#)[◀](#)[▶](#)[◀](#)[▶](#)[Back](#)[Close](#)[Full Screen / Esc](#)[Printer-friendly Version](#)[Interactive Discussion](#)

- Organization, Global Ozone Research and Monitoring Project - Scientific Assessment of Ozone Depletion, Chapter 7: Surface Ultraviolet Radiation: Past, Present and Future, 2007.
- 5 Balis, D. S., Amiridis, V., Zerefos, C., Kazantzidis, A., Kazadzis, S., Bais, A. F., Meleti, C., Gerasopoulos, E., Papayannis, A., Matthias, V., Dier, H., and Andreae, M. O.: Study of the effect of different type of aerosols on UV-B radiation from measurements during EARLINET, Atmos. Chem. Phys., 4, 307–321, 2004, <http://www.atmos-chem-phys.net/4/307/2004/>.
- Bigelow, D. S. and Slusser, J. R.: Establishing the Stability of Multi-filter UV Rotating Shadow-band Radiometers, J. Geophys. Res., 105, 4833–4840, 2000.
- 10 Bigelow, D. S., Slusser, J. R., Beaubien, A. F., and Gibson, J. H.: The USDA Ultraviolet Radiation Monitoring Program, B. Am. Meteorol. Soc., 79(4), 601–615, 1998.
- Boersma, K. F., Eskes, H. J., and Brinksma, E. J.: Error Analysis for Tropospheric NO₂ Retrieval from Space, J. Geophys. Res., 109, D04311, doi:10.1029/2003JD003962, 2004.
- Brühl, C. and Crutzen, P. J.: On the disproportionate role of tropospheric ozone as a filter against solar UVB radiation, Geophys. Res. Lett., 16(7), 703–706, 1989.
- 15 Buchard, V., Brogniez, C., Auriol, F., Bonnel, B., Lenoble, J., Tanskanen, A., Bojkov, B., and Veefkind, P.: Comparison of OMI ozone and UV irradiance data with ground-based measurements at two French sites, Atmos. Chem. Phys., 8, 4517–4528, 2008, <http://www.atmos-chem-phys.net/8/4517/2008/>.
- 20 Caldwell, M. M., Bornman, J. F., Ballaré, C. L., Flint, S. D., and Kulandaivelu, G.: Terrestrial ecosystems, increased solar ultraviolet radiation, and interactions with other climate change factors, Chapter 3 in Environmental Effects of Ozone Depletion and Its Interactions with Climate Change: 2006 Assessment, United Nations Environment Programme, 65–94, 2006.
- Corr, C. A., Krotkov, N., Madronich, S., Slusser, J. R., Holben, B., Gao, W., Flynn, J., Lefer, B., and Kreidenweis, S. M.: Retrieval of aerosol single scattering albedo at ultraviolet wave-
25 lengths at the T1 site during MILAGRO, Atmos. Chem. Phys., 9, 5813–5827, 2009, <http://www.atmos-chem-phys.net/9/5813/2009/>.
- Dave, J. V.: Multiple scattering in a non-homogeneous, Rayleigh atmosphere, J. Atmos. Sci., 22, 273–279, 1965.
- 30 DeLuisi, J., Theisen, D., Augustine, J., Disterhoft, P., Lantz, K., Weatherhead, E., Hodges, G., Cornwall, C., Petropavlovskikh, I., Stevermer, A., Wellman, D., and Barnett, J.: On the correspondence between surface UV observations and TOMS determinations of surface UV: A potential method for quality evaluating world surface UV observations, Annals of Geophysics,

46, 295–308, 2003.

Denman, K. L., Brasseur, G., Chidthaisong, A., Ciais, P., Cox, P. M., Dickinson, R. E., Hauglustaine, D., Heinze, C., Holland, E., Jacob, D., Lohmann, U., Ramachandran, S., Dias, P. L. da Silva, Wofsy, S. C., and Zhang, X.: Couplings between changes in the climate system and biogeochemistry. Chapter 7 in *Climate Change 2007: the physical science basis. Contribution of Working Group I to the Fourth Assessment Report of the Intergovernmental Panel on Climate Change*, edited by: Solomon, S., Qin, D., Manning, M., Chen, Z., Marquis, M., Averyt, K. B., Tignor, M., and Miller, H. L., Cambridge University Press, Cambridge, United Kingdom and New York, NY, USA, 499–588, 2007.

Eck, T. F., Bhartia, P. K., and Kerr, J. B.: Satellite estimation of spectral UVB irradiance using TOMS derived total ozone and UV reflectivity, *Geophys. Res. Lett.*, 22, 611–614, 1995.

Fioletov, V. E., Kimlin, M. G., Krotkov, N., McArthur, L. J. B., Kerr, J. B., Wardle, D. I., Herman, J. R., Meltzer, R., Mathews, T. W., and Kaurola, J.: UV index climatology over the United States and Canada from ground-based and satellite estimates, *J. Geophys. Res.*, 109, D22308, doi:10.1029/2004JD004820, 2004.

Fioletov, V. E., Kerr, J. B., Wardle, D. I., Krotkov, N., and Herman, J. R.: Comparison of Brewer ultraviolet irradiance measurements with total ozone mapping spectrometer satellite retrievals, *Opt. Eng.*, 41, 3051–3061, 2002.

Goering, C. D., L'Ecuyer, T. S., Stephens, G. L., Slusser, J. R., Scott, G., Davis, J., Barnard, J. C., and Madronich, S.: Simultaneous retrievals of column ozone and aerosol optical properties from direct and diffuse solar irradiance measurements, *J. Geophys. Res.*, 110, D05204, doi:10.1029/2004JD005330, 2005.

Harrison, L. and Michalsky, J.: Objective algorithms for the retrieval of optical depths from ground-based measurements, *Appl. Optics*, 33, 5126–5137, 1994.

Herman, J., Krotkov, N., Celarier, E., Larko, D., and Labow, G.: Distribution of UV radiation at the Earth's surface from TOMS-measured UV-backscattered radiances, *J. Geophys. Res.*, 104(D10), 12059–12076, 1999.

Herman, J. R. and Celarier, E. A.: Earth surface reflectivity climatology at 340–380 nm from TOMS data, *J. Geophys. Res.*, 102(D23), 28003–28011, 1997.

Herman, J., Bhartia, P., Ziemke, J., Ahmad, Z., and Larko, D.: UV-B increases (1979–1992) from decreases in total ozone, *Geophys. Res. Lett.*, 23, 2117–2120, 1996.

Kazadzis, S., Bais, A., Arola, A., Krotkov, N., Kouremeti, N., and Meleti, C.: Ozone Monitoring Instrument spectral UV irradiance products: comparison with ground based measurements

ACPD

10, 10969–11008, 2010

Comparison of TOMS retrievals and UVMRP measurements

M. Xu et al.

Title Page

Abstract

Introduction

Conclusions

References

Tables

Figures

◀

▶

◀

▶

Back

Close

Full Screen / Esc

Printer-friendly Version

Interactive Discussion



- at an urban environment, *Atmos. Chem. Phys.*, 9, 585–594, 2009a, <http://www.atmos-chem-phys.net/9/585/2009/>.
- Kazadzis, S., Bais, A., Balis, D., Kouremeti, N., Zempila, M., Arola, A., Giannakaki, E., Amiridis, V., and Kazantzidis, A.: Spatial and temporal UV irradiance and aerosol variability within the area of an OMI satellite pixel, *Atmos. Chem. Phys.*, 9, 4593–4601, 2009b, <http://www.atmos-chem-phys.net/9/4593/2009/>.
- Kazantzidis, A., Bais, A., Grobner, J., Herman, J., Kazadzis, S., Krotkov, N., Kyro, E., den Outer, P., Garane, K., Gorts, P., Lakkala, K., Meleti, C., Slaper, H., Tax, R. B., Turunen, T., and Zerefos, C. S.: Comparison of satellite-derived UV irradiances with ground-based measurements at four European stations, *J. Geophys. Res.*, 111, D13207, doi:10.1029/2005JD006672, 2006.
- Kazantzidis, A., Balis, D. S., Bais, A. F., Kazadzis, S., Galani, E., Kosmidis, E., and Blumthaler, M.: Comparison of Model Calculations with Spectral UV Measurements during the SUSPEN Campaign: The Effect of Aerosols, *J. Atmos. Sci.*, 58, 1529–1539, 2001.
- Krotkov, N. A., Carn, S. A., Krueger, A. J., Bhartia, P. K., and Yang, K.: Band residual difference algorithm for retrieval of SO₂ from the AURA Ozone Monitoring Instrument (OMI), *IEEE Transactions on Geoscience and Remote Sensing*, AURA special issue, 44(5), 1259–1266, doi:10.1109/TGRS.2005.861932, 2006.
- Krotkov, N. A., Bhartia, P. K., Herman, J., Slusser, J., Scott, G., Janson, G., Labow, G., Eck, T., and Holben, B.: Aerosol UV absorption experiment (2002 to 2004), part 1: UV-MFRSR calibration and intercomparison with CIMEL sunphotometers, *Opt. Eng.*, 44(4), 141004, doi:10.1117/1.1886818, 2005a.
- Krotkov, N. A., Bhartia, P. K., Herman, J., Slusser, J., Scott, G., Labow, G., Vasilkov, A. P., Eck, T. F., Dubovik, O., and Holben, B. N.: Aerosol ultraviolet absorption experiment (2002 to 2004), part 2: absorption optical thickness, refractive index, and single scattering albedo, *Opt. Eng.*, SPIE, 44, 041005, doi:10.1117/1.1886819, 2005b.
- Krotkov, N. A., Herman, J., Cede, A., and Labow, G.: Partitioning between aerosol and NO₂ absorption in the UVA, in *Ultraviolet Ground- and Space-based Measurements, Models, and Effects V*, edited by: Bernhard, G., Slusser, J. R., Herman, J. R., and Gao, W., *Proceedings of SPIE*, 5886, (SPIE, Bellingham, WA, 2005), 588601, 2005c.
- Krotkov, N. A., Herman, J., Bhartia, P. K., Seftor, C., Arola, A., Kaurola, J., Kalliskota, S., Taalas, P., and Geogdzhayev, I. V.: Version 2 total ozone mapping spectrometer ultraviolet algorithm: problems and enhancements, *Opt. Eng.*, 41, 3028–3039, 2002.

Comparison of TOMS retrievals and UVMRP measurementsM. Xu et al.

[Title Page](#)[Abstract](#)[Introduction](#)[Conclusions](#)[References](#)[Tables](#)[Figures](#)[◀](#)[▶](#)[◀](#)[▶](#)[Back](#)[Close](#)[Full Screen / Esc](#)[Printer-friendly Version](#)[Interactive Discussion](#)

Comparison of TOMS retrievals and UVMRP measurements

M. Xu et al.

[Title Page](#)[Abstract](#)[Introduction](#)[Conclusions](#)[References](#)[Tables](#)[Figures](#)[◀](#)[▶](#)[◀](#)[▶](#)[Back](#)[Close](#)[Full Screen / Esc](#)[Printer-friendly Version](#)[Interactive Discussion](#)

- Krotkov, N. A., Herman, J., Bhartia, P. K., Fioletov, V., and Ahmad, Z.: Satellite estimation of spectral surface UV irradiance 2. Effects of homogeneous clouds and snow, *J. Geophys. Res.*, 106, 11743–11759, 2001.
- 5 Krotkov, N. A., Bhartia, P., Herman, J., Fioletov, V., and Kerr, J.: Satellite estimation of spectral surface UV irradiance in the presence of tropospheric aerosols 1. Cloud-free case, *J. Geophys. Res.*, 103(D8), 8779–8793, 1998.
- Li, Z., Zhao, X., Kahn, R., Mishchenko, M., Remer, L., Lee, K.-H., Wang, M., Laszlo, I., Nakajima, T., and Maring, H.: Uncertainties in satellite remote sensing of aerosols and impact on monitoring its long-term trend: a review and perspective, *Ann. Geophys.*, 27, 2755–2770, 2009,
10 <http://www.ann-geophys.net/27/2755/2009/>.
- Long, C. N. and Ackerman, T. P.: Identification of clear skies from pyranometer measurements and calculation of downwelling shortwave cloud effects, *J. Geophys. Res.*, 105, 15609–15626, 2000.
- 15 Martin, R. V.: Satellite remote sensing of surface air quality, *Atmos. Environ.*, 42(34), 7823–7843, doi:10.1016/j.atmosenv.2008.07.018., 2008.
- Mayer, B., Kylling, A., Madronich, S., and Seckmeyer, G.: Enhanced absorption of UV radiation due to multiple scattering in clouds: Experimental evidence and theoretical explanation, *J. Geophys. Res.*, 103(D23), 31241–31254, 1998.
- 20 McKenzie, R., Seckmeyer, G., Bais, A., Kerr, J., and Madronich, S.: Satellite retrievals of erythema UV dose compared with ground-based measurements at northern and southern midlatitudes, *J. Geophys. Res.*, 106(D20), 24051–24062, 2001.
- McKinlay, A. and Diffey, B.: A reference action spectrum for ultraviolet induced erythema in human skin, in: *Human Exposure to Ultraviolet Radiation: Risks and Regulations*, edited by: Passchier, W. R. and Bosnjakovic, B. F. M., Elsevier, Amsterdam, 83–87, 1987.
- 25 Norval, M., Cullen, A. P., de Grujil, F. R., Longstreth, J., Takizawa, Y., Lucas, R. M., Noonan, F. P., and van der Leun, J. C.: The effects on human health from stratospheric ozone depletion and its interactions with climate change, Chapter 2 in *Environmental Effects of Ozone Depletion and Its Interactions with Climate Change: 2006 Assessment*, United Nations Environment Programme, 25–64, 2006.
- 30 Papayannis, A., Balis, D., Amiridis, V., Chourdakis, G., Tsaknakis, G., Zerefos, C., Castanho, A. D. A., Nickovic, S., Kazadzis, S., and Grabowski, J.: Measurements of Saharan dust aerosols over the Eastern Mediterranean using elastic backscatter-Raman lidar, spectrophotometric

and satellite observations in the frame of the EARLINET project, *Atmos. Chem. Phys.*, 5, 2065–2079, 2005,

<http://www.atmos-chem-phys.net/5/2065/2005/>.

Sabburg, J., Rives, J., Meltzer, R., Taylor, T., Schmalzle, G., Zheng, S., Huang, N., Wilson, A., and Udelhofen, P.: Comparisons of corrected daily integrated erythemal UVR data from the US EPA/UGA network of Brewer spectroradiometers with model and TOMS-inferred data, *J. Geophys. Res.*, 107(D23), 4676, doi:10.1029/2001JD001565, 2002.

Scotto, J., Cotton, G., Urbach, F., Berger, D., and Fears, T.: Biologically effective ultraviolet radiation: Surface measurements in the United States, 1974 to 1985, *Science*, 239, 762–764, 1988.

Seinfeld, J. H. and Pandis, P. J.: *Atmospheric Chemistry and Physics: From Air Pollution to Climate Change*, John Wiley, New York, 1326 pp., 1998.

Slusser, J. R., Krotkov, N., Gao, W., Herman, J. R., Labow, G., and Scott, G.: Comparisons of USDA UV shadow-band irradiance measurements of TOMS satellite and DISORT model retrievals under all sky conditions, in: *Ultraviolet Ground- and Space-based Measurements, Models, and Effects*, Proceeding of SPIE Volume 4482, Published by Society of Photographic Instrumentation Engineers (SPIE), Bellingham, WA, USA, 56–63, 2002.

Slusser, J., Gibson, J., Bigelow, D., Kolinski, D., Disterhoft, P., Lantz, K., and Beaubien A.: Langley method of calibrating UV filter radiometers, *J. Geophys. Res.*, 105(D4), 4841–4849, doi:10.1029/1999JD900451, 2000.

Stamnes, K., Tsay, S., Wiscombe, W., and Jayaweera, K.: A numerically stable algorithm for discrete-ordinate-method radiative transfer in multiple scattering and emitting layered media, *Appl. Optics*, 27, 2502–2509, 1988.

Tanskanen, A., Lindfors, A., Maatta, A., Krotkov, N., Herman, J., Kaurola, J., Koskela, T., Lakkala, K., Fioletov, V., Bernhard, G., McKenzie, R., Kondo, Y., O'Neill, M., Slaper, H., den Outer, P., Bais, A. F., and Tamminen, J.: Validation of daily erythemal doses from Ozone Monitoring Instrument with ground-based UV measurement data, *J. Geophys. Res.*, 112, D24S44, doi:10.1029/2007JD008830, 2007.

Tao, Z., Larson, S. M., Wuebbles, D. J., Williams, A., and Caughey, M.: A summer simulation of biogenic contributions to ground-level ozone over the continental United States, *J. Geophys. Res.*, 108(D14), 4404, doi:10.1029/2002JD002945, 2003.

TEMIS: Sulphur dioxide monitoring within TEMIS, TEM/SO2/001/, 0.9-rev0., online available at: http://www.temis.nl/docs/TEMIS_SO2_09.doc, 44 pp., 2006.

Comparison of TOMS retrievals and UVMRP measurements

M. Xu et al.

Title Page

Abstract

Introduction

Conclusions

References

Tables

Figures

◀

▶

◀

▶

Back

Close

Full Screen / Esc

Printer-friendly Version

Interactive Discussion



Comparison of TOMS retrievals and UVMRP measurementsM. Xu et al.

[Title Page](#)[Abstract](#)[Introduction](#)[Conclusions](#)[References](#)[Tables](#)[Figures](#)[◀](#)[▶](#)[◀](#)[▶](#)[Back](#)[Close](#)[Full Screen / Esc](#)[Printer-friendly Version](#)[Interactive Discussion](#)

- Torres, O., Tanskanen, A., Veihelmann, B., Ahn, C., Braak, R., Bhartia, P. K., Veefkind, P., and Levelt, P.: Aerosols and surface UV products from Ozone Monitoring Instrument observations: An overview, *J. Geophys. Res.*, 112, D24S47, doi:10.1029/2007JD008809, 2007.
- 5 Wang, P., Li, Z., Cihlar, J., Wardle, D. I., and Kerr, J.: Validation of an UV inversion algorithm using satellite and surface measurements, *J. Geophys. Res.*, 105(D4), 5037–5048, 2000.
- Weih, P., Blumthaler, M., Rieder, H. E., Kreuter, A., Simic, S., Laube, W., Schmalwieser, A. W., Wagner, J. E., and Tanskanen, A.: Measurements of UV irradiance within the area of one satellite pixel, *Atmos. Chem. Phys.*, 8, 5615–5626, 2008, <http://www.atmos-chem-phys.net/8/5615/2008/>.
- 10 Wuttke, S., Verdebout, J., and Seckmeyer, G.: An Improved Algorithm for Satellite-derived UV Radiation, *Photochem. Photobiol.*, 77(1), 52–57, 2003.
- Xu, M., Liang, X.-Z., Gao, W., Slusser, J. R., and Kunkel, K. E.: Validation of the TUV module in CWRP using USDA UV-B network observations, in: Remote Sensing and Modeling of Ecosystems for Sustainability III, Proceeding of SPIE Volume 6298, Published by Society of Photographic Instrumentation Engineers (SPIE), Bellingham, WA, USA, 0N-1–0N-8, 2006.
- 15 Zerefos, C. S., Kourtidis, K., Melas, D., Balis, D. S., Zanis, P., Katsaros, L., Mantis, H. T., Repapis, C., Isaksen, I., Sundet, J., Herman, J., Bhartia, P. K., and Calpini B.: Photochemical Activity and Solar Ultraviolet Radiation (PAUR) Modulation Factors: An overview of the project, *J. Geophys. Res.*, 107(D18), 8134, doi:10.1029/2000JD000134, 2002.
- 20 Zerefos, C. S., Meleti, C., Bais, A. F., and Lambros, A.: The Recent UV-B variability over Southeastern Europe, *J. Photochem. Photobiol. B*, 31(1–2), 15–19, 1995.

Table 1. The geographical information and brief descriptions of 27 UVMRP observation sites.

Name	Latitude (°)	Longitude (°)	Elevation (m)	Location
WA02	46.750	-117.183	804	Albion Field Station, Pullman, Washington
SK02	50.197	-104.700	580	Bratt's Lake Observatory (roof), Regina, Saskatchewan
MT02	48.310	-105.100	634	Fort Peck Assiniboine and Sioux Tribes, Poplar, Montana
UT02	41.666	-111.891	1368	Utah Climate Center, Logan, Utah
CO12	40.450	-106.734	3220	DRI Storm Peak Lab (roof), Steamboat Springs, Colorado
CO02	40.792	-104.755	1641	Central Plains Experimental Range, Nunn, Colorado
CA02	38.529	-121.761	18	UC Davis Climate Station, Davis, California
CA22	32.806	-115.444	-18	UC Desert Research and Extension Center, Holtville, California
AZ02	36.058	-112.183	2073	Abyss Site at Grand Canyon National Park, Flagstaff, Arizona
NM02	32.617	-106.742	1317	Jornada Experimental Range, Las Cruces, New Mexico
TX02	29.133	-103.517	670	Castolon Site at Big Bend National Park, Panther Junction, Texas
NE02	41.133	-96.483	353	High Plains Regional Climate Center, Mead, Nebraska
OK02	36.617	-97.500	317	US Department of Energy ARM/SGP/CART, Billings, Oklahoma
MN02	47.181	-93.533	394	North Central Research and Outreach Center, Grand Rapids, Minnesota
WI02	44.708	-89.766	381	Lake Dubay, Dancy, Wisconsin
IL02	40.045	-88.368	213	Environmental and Atmospheric Research Site, Bondville, Illinois
MI02	45.555	-84.666	238	University of Michigan Biological Station, Pellston, Michigan
IN02	40.475	-86.992	216	Agronomy Center for Research and Education, West Lafayette, Indiana
ON02	43.780	-79.470	198	Environment Canada building (roof), Toronto, Ontario
NY02	42.876	-77.029	218	Agricultural Experiment Station at Geneva, Geneva, New York
VT02	44.533	-72.856	408	Proctor Maple Research Center, Burlington, Vermont
ME12	46.681	-68.038	144	Northern Maine Regional Office, Presque Isle, Maine
LA02	30.358	-91.166	7	LSU Central Research Station, Baton Rouge, Louisiana
MS02	33.469	-88.782	85	Agricultural and Forestry Experiment Station, Starkville, Mississippi
GA02	33.181	-84.410	270	University of Georgia Bledsoe Research Farm, Griffin, Pike, Georgia
FL02	25.383	-80.683	0	Beard Research Center at Everglades National Park, Homestead, Florida
MD02	38.916	-76.149	5	Wye Research and Education Center, Queenstown, Maryland

Comparison of TOMS retrievals and UVMRP measurements

M. Xu et al.

Title Page

Abstract

Introduction

Conclusions

References

Tables

Figures

◀

▶

◀

▶

Back

Close

Full Screen / Esc

Printer-friendly Version

Interactive Discussion



Comparison of TOMS retrievals and UVMRP measurements

M. Xu et al.

Table 2. Averaged relative mean biases (RM) and the relative deviation (RD, in parenthesis) at 305, 311, 325, and 368 nm across all 27 sites under clear-sky and total-sky conditions (* excluding the remote and clean sites, NM02, AZ02, and CO12, ** excluding sites CA02, FL02, GA02, and ON02 to be compared with the results of L&R).

Sky condition	Cloud screening method				
		305 nm	311 nm	325 nm	368 nm
Clear-sky	TRT	15.4 (11.4)	7.9 (11.4)	7.6 (10.2)	7.0 (9.9)
	TRT*	16.8 (11.4)	9.0 (11.4)	8.3 (10.2)	7.5 (9.9)
	TRT**	15.0 (11.0)	7.4 (10.9)	7.4 (9.7)	6.6 (9.4)
	L&R	11.5 (8.8)	3.5 (8.5)	4.0 (7.2)	3.0 (6.5)
Total-sky	Total-sky	16.5 (16.9)	9.5 (16.9)	8.5 (16.0)	7.8 (16.0)
	Total-sky*	17.6 (17.0)	10.4 (17.1)	8.8 (16.2)	8.0 (16.2)

Title Page

Abstract

Introduction

Conclusions

References

Tables

Figures

◀

▶

◀

▶

Back

Close

Full Screen / Esc

Printer-friendly Version

Interactive Discussion



Comparison of TOMS retrievals and UVMRP measurements

M. Xu et al.

Table 3. The correlation coefficients across all 27 sites of the clear-sky relative mean biases (RM) at 305, 311, 325, and 368 nm with the major tropospheric trace gases (NO₂ and SO₂) and aerosol optical depth from UVMRP and aerosol absorbing optical depth from OMI.

RM	305 nm	311 nm	325 nm	368 nm
NO ₂	0.42	0.41	0.30	0.34
SO ₂	0.58	0.42	0.33	0.30
AOD _{UVMRP}	0.53	0.49	0.60	0.75
AAOD _{OMI}	0.33	0.35	0.32	0.29

[Title Page](#)[Abstract](#)[Introduction](#)[Conclusions](#)[References](#)[Tables](#)[Figures](#)[◀](#)[▶](#)[◀](#)[▶](#)[Back](#)[Close](#)[Full Screen / Esc](#)[Printer-friendly Version](#)[Interactive Discussion](#)

**Comparison of TOMS
retrievals and UVMRP
measurements**

M. Xu et al.

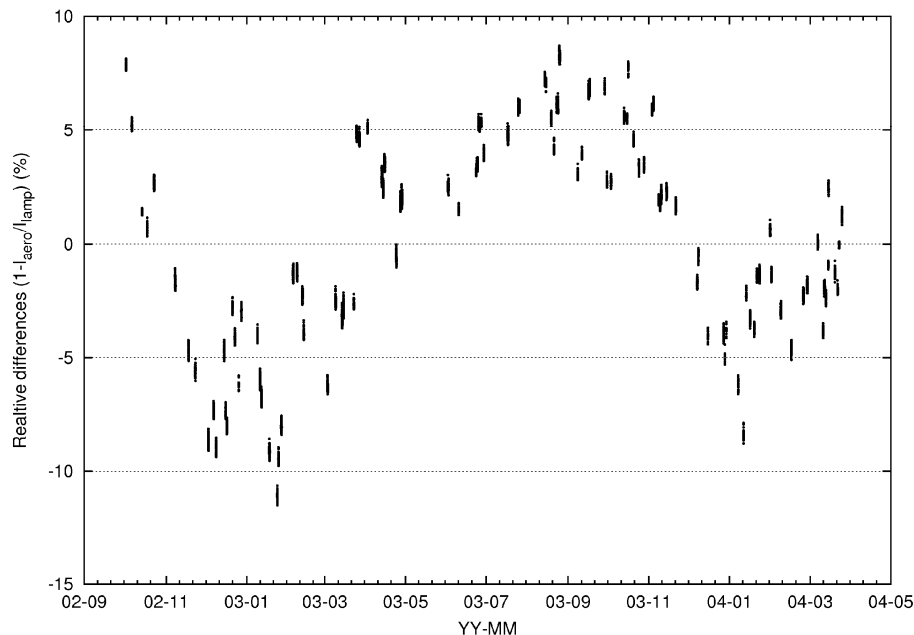


Fig. 1. The relative differences $(1 - I_{\text{aero}}/I_{\text{lamp}})$ of 3-min clear-sky spectral irradiances for 325 nm between the UVMRP lamp calibration (I_{lamp}) and AERONET transferring calibration (I_{aero}) at the collocated UVMRP research site in Greenbelt, Maryland.

[Title Page](#)[Abstract](#)[Introduction](#)[Conclusions](#)[References](#)[Tables](#)[Figures](#)[◀](#)[▶](#)[◀](#)[▶](#)[Back](#)[Close](#)[Full Screen / Esc](#)[Printer-friendly Version](#)[Interactive Discussion](#)

Comparison of TOMS retrievals and UVMRP measurements

M. Xu et al.

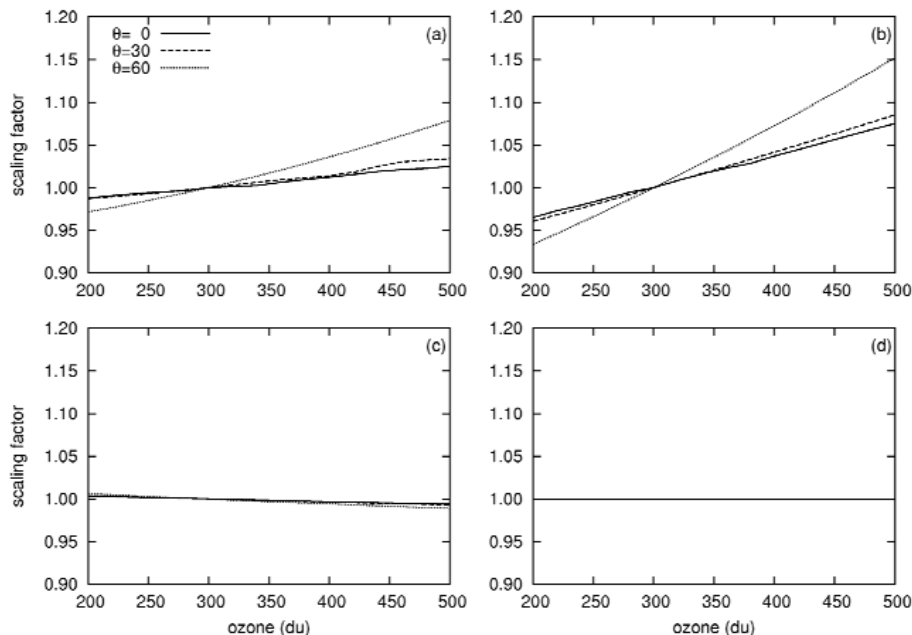


Fig. 2. Scaling factors for the re-convolution of the TOMS spectral irradiances at (a) 305 nm, (b) 310 nm, (c) 324 nm, and (d) 380 nm to the UVMRP measurements at in Bondville, IL (IL02) in July, 2003 in terms of the total column ozone for the range of 200–500 DU and three solar zenith angles (0, 30, 60 degrees). The scaling factors were normalized by the corresponding values of 300 DU ozone.

[Title Page](#)[Abstract](#)[Introduction](#)[Conclusions](#)[References](#)[Tables](#)[Figures](#)[◀](#)[▶](#)[◀](#)[▶](#)[Back](#)[Close](#)[Full Screen / Esc](#)[Printer-friendly Version](#)[Interactive Discussion](#)

Comparison of TOMS retrievals and UVMRP measurements

M. Xu et al.

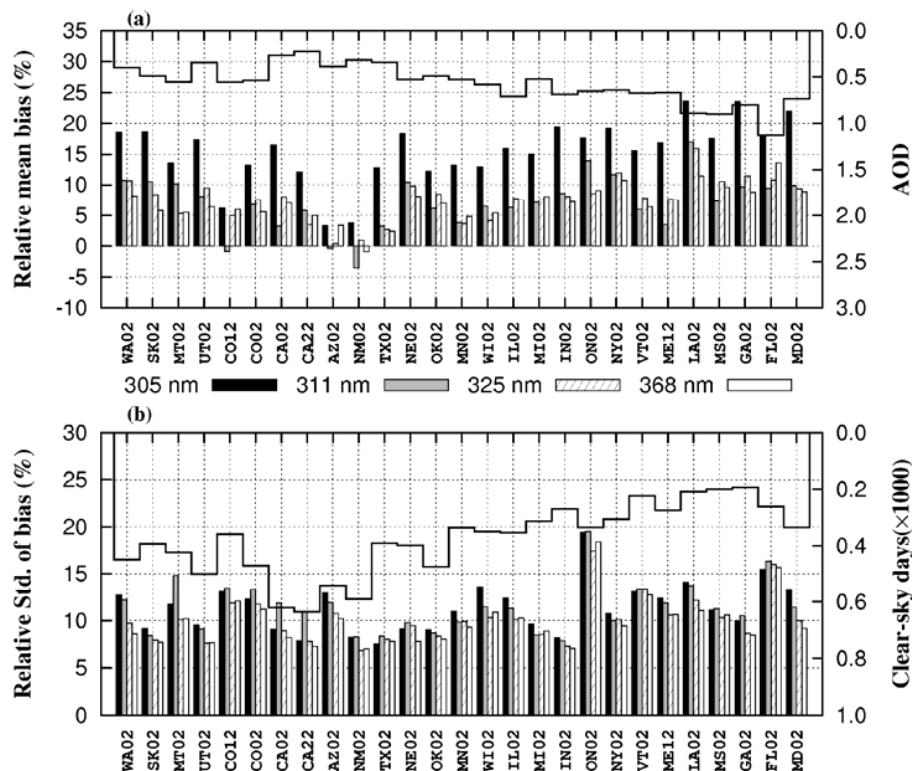


Fig. 3. The relative mean (a) and standard deviation (b) of biases (left axis) of the 2000–2004 summer (May–September) noontime surface UV irradiances at 305, 311, 325, and 368 nm under clear-sky conditions using the TRT (TOMS reflectivity threshold) cloud screening method during 2000–2004. Also shown as the top curves (right axis) are total optical depth (aerosol plus cloud) at 368 nm (a) and total number of clear-sky days (b).

Title Page

Abstract

Introduction

Conclusions

References

Tables

Figures

◀

▶

◀

▶

Back

Close

Full Screen / Esc

Printer-friendly Version

Interactive Discussion



Comparison of TOMS retrievals and UVMRP measurements

M. Xu et al.

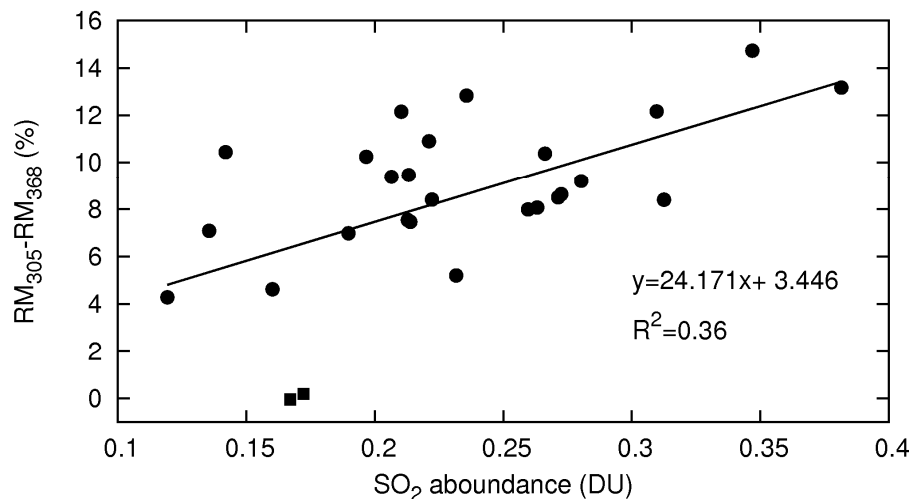


Fig. 4. The scatter diagram of the RM differences (%) between 305 and 368 nm versus the climatological mean total tropospheric abundances (DU) of SO₂ (solid points) for the 27 UVMRP. Also shown are the respective linear regression function and correlation coefficient, with the fitting line for SO₂ (solid). Two high elevation sites (AZ02, CO12) are distinguished by squares because of doubt on SO₂ abundance by data interpolation.

[Title Page](#)[Abstract](#)[Introduction](#)[Conclusions](#)[References](#)[Tables](#)[Figures](#)[◀](#)[▶](#)[◀](#)[▶](#)[Back](#)[Close](#)[Full Screen / Esc](#)[Printer-friendly Version](#)[Interactive Discussion](#)

Comparison of TOMS retrievals and UVMRP measurements

M. Xu et al.

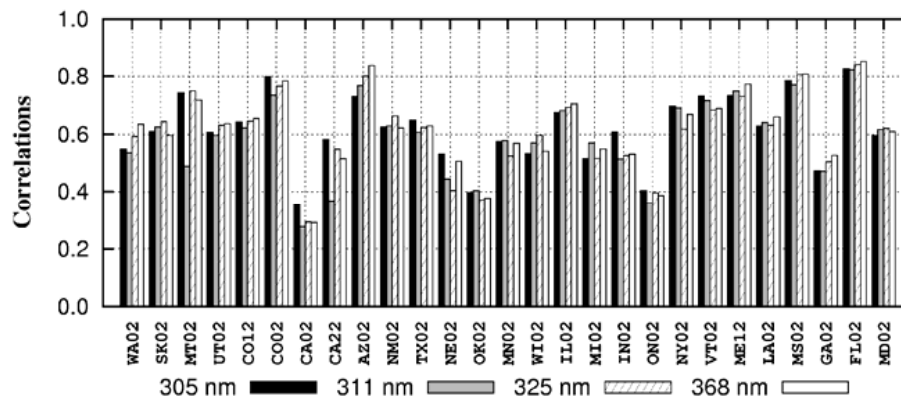


Fig. 5. The temporal correlations of the TOMS irradiance biases from the UVMRP measurements with in-situ optical depths at 368 nm observed by UVMRP at each monitoring site for 305, 311, 325, and 368 nm.

[Title Page](#)[Abstract](#)[Introduction](#)[Conclusions](#)[References](#)[Tables](#)[Figures](#)[◀](#)[▶](#)[◀](#)[▶](#)[Back](#)[Close](#)[Full Screen / Esc](#)[Printer-friendly Version](#)[Interactive Discussion](#)

Comparison of TOMS retrievals and UVMRP measurements

M. Xu et al.

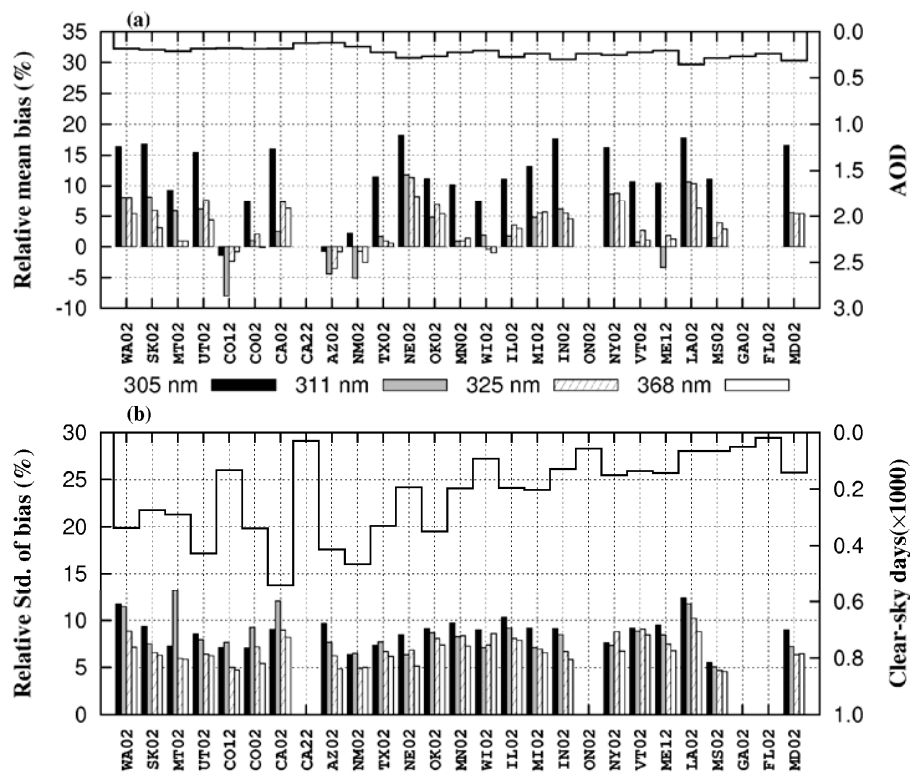


Fig. 6. Same as Fig. 2 except using the L&A (Long and Ackerman, 2000) cloud screening method.

Title Page

Abstract

Introduction

Conclusions

References

Tables

Figures

◀

▶

◀

▶

Back

Close

Full Screen / Esc

Printer-friendly Version

Interactive Discussion



Comparison of TOMS retrievals and UVMRP measurements

M. Xu et al.

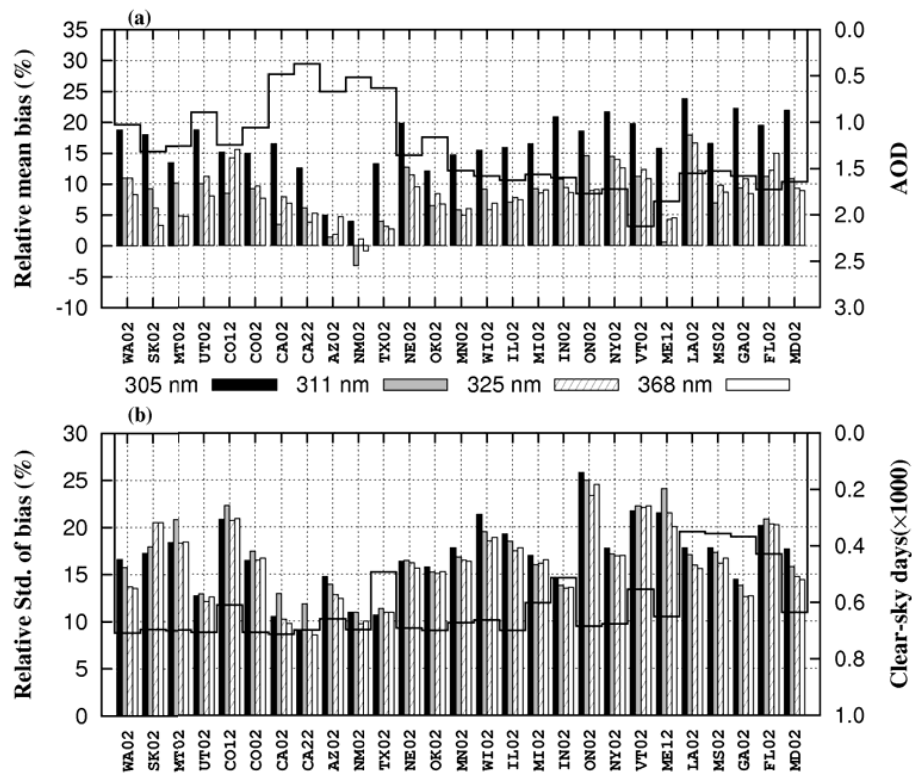


Fig. 7. Same as Fig. 2 except for total-sky conditions.

Title Page

Abstract

Introduction

Conclusions

References

Tables

Figures

◀

▶

◀

▶

Back

Close

Full Screen / Esc

Printer-friendly Version

Interactive Discussion

