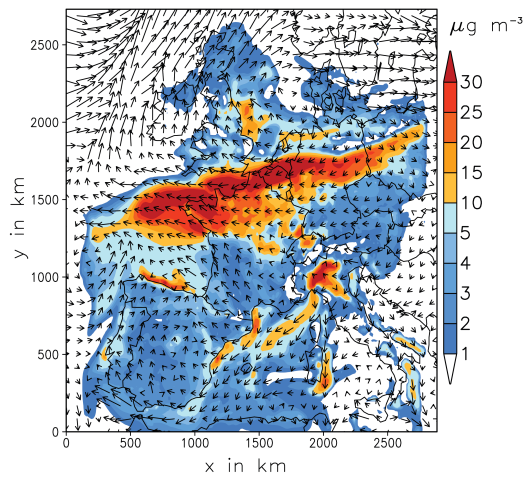
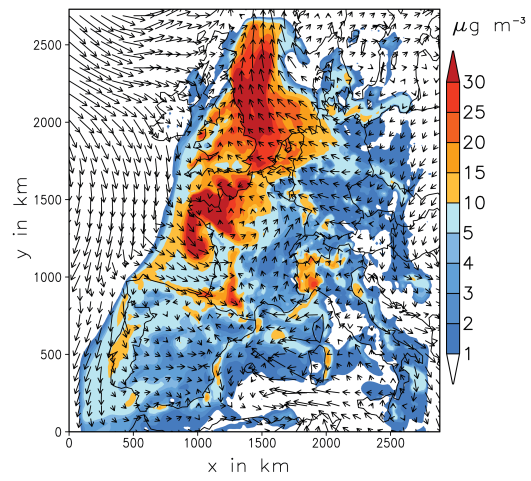


## Supplemental material

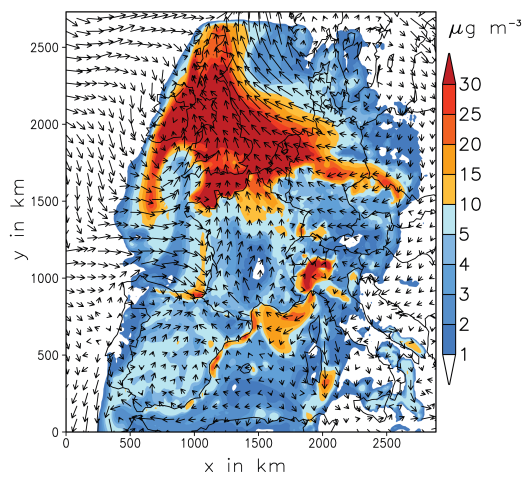
30. AUG 2005, 12 UTC



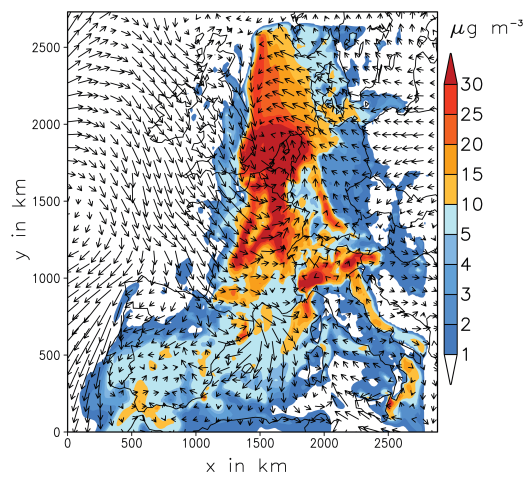
18. AUG 2005, 12 UTC



31. AUG 2005, 12 UTC



19. AUG 2005, 12 UTC



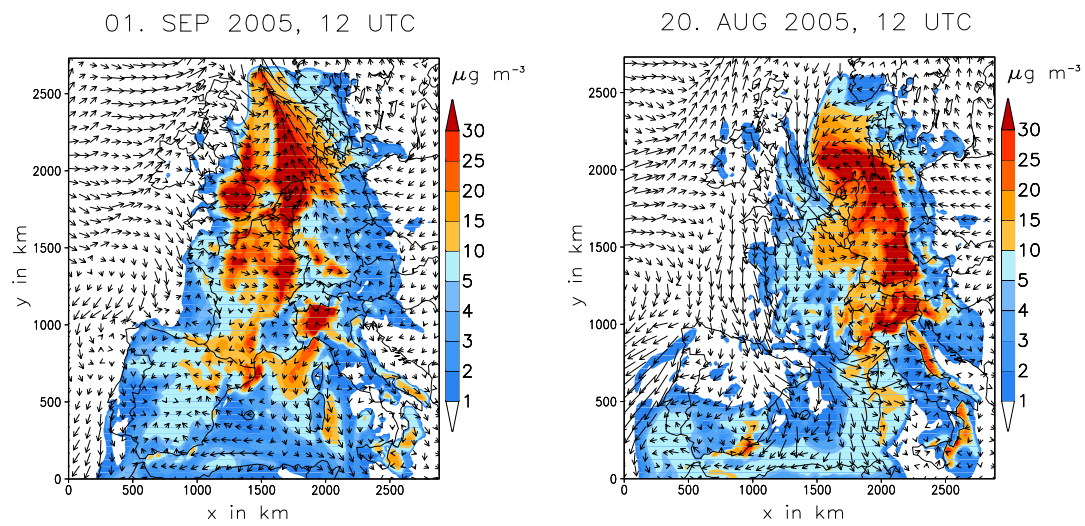
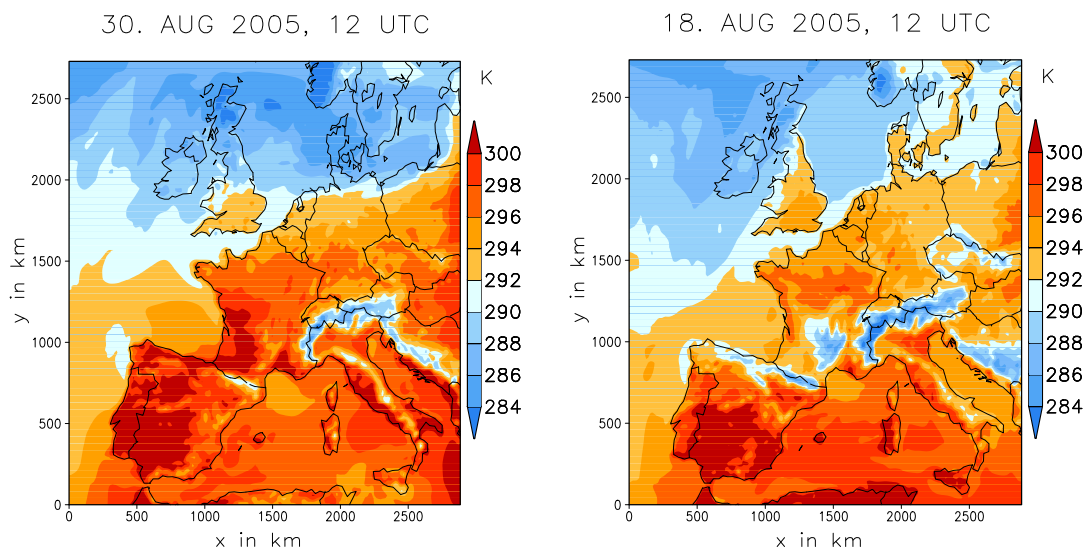


Fig. S1. Simulated total dry aerosol mass and horizontal wind vectors at 20 m above surface.



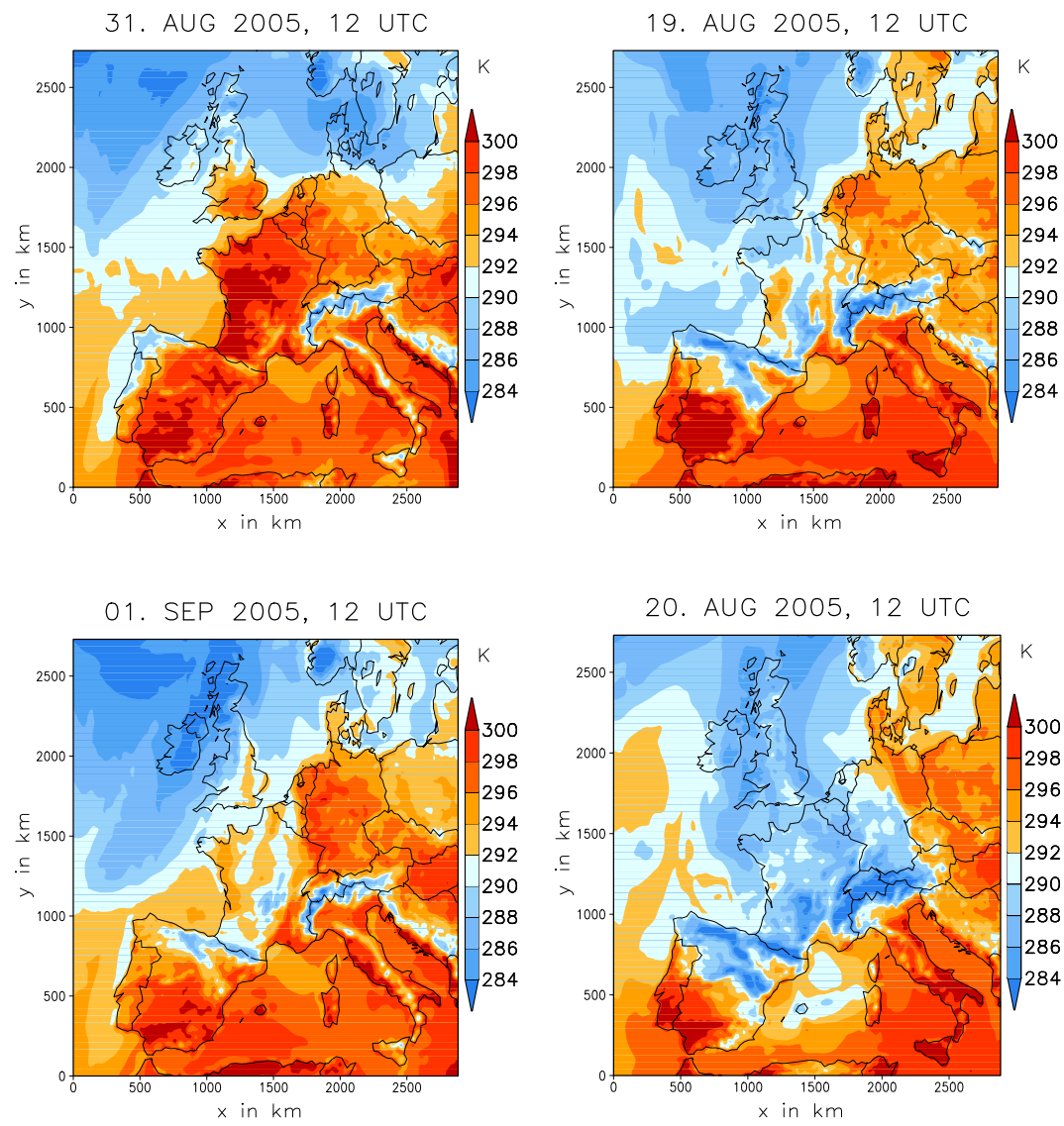


Fig. S2. Simulated temeprature at 20 m above surface.

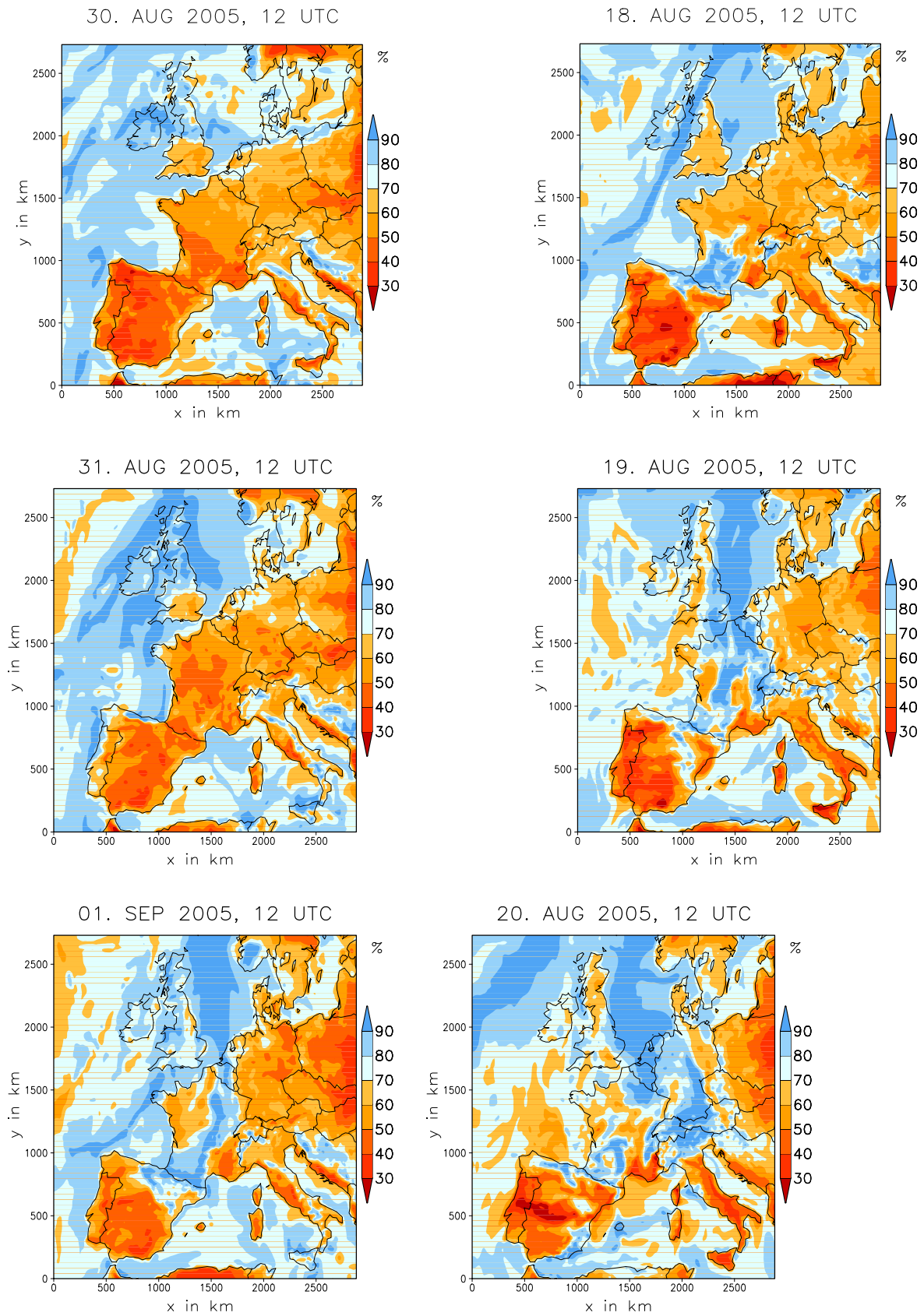


Fig. S3. Simulated relative humidity at 20 m above surface.