

Supplementary Material

for acp-2009-187 ‘Simulation of particle size distribution with a global aerosol model:
Contribution of nucleation to aerosol and CCN number concentrations’

by Fangqun Yu and Gan Luo

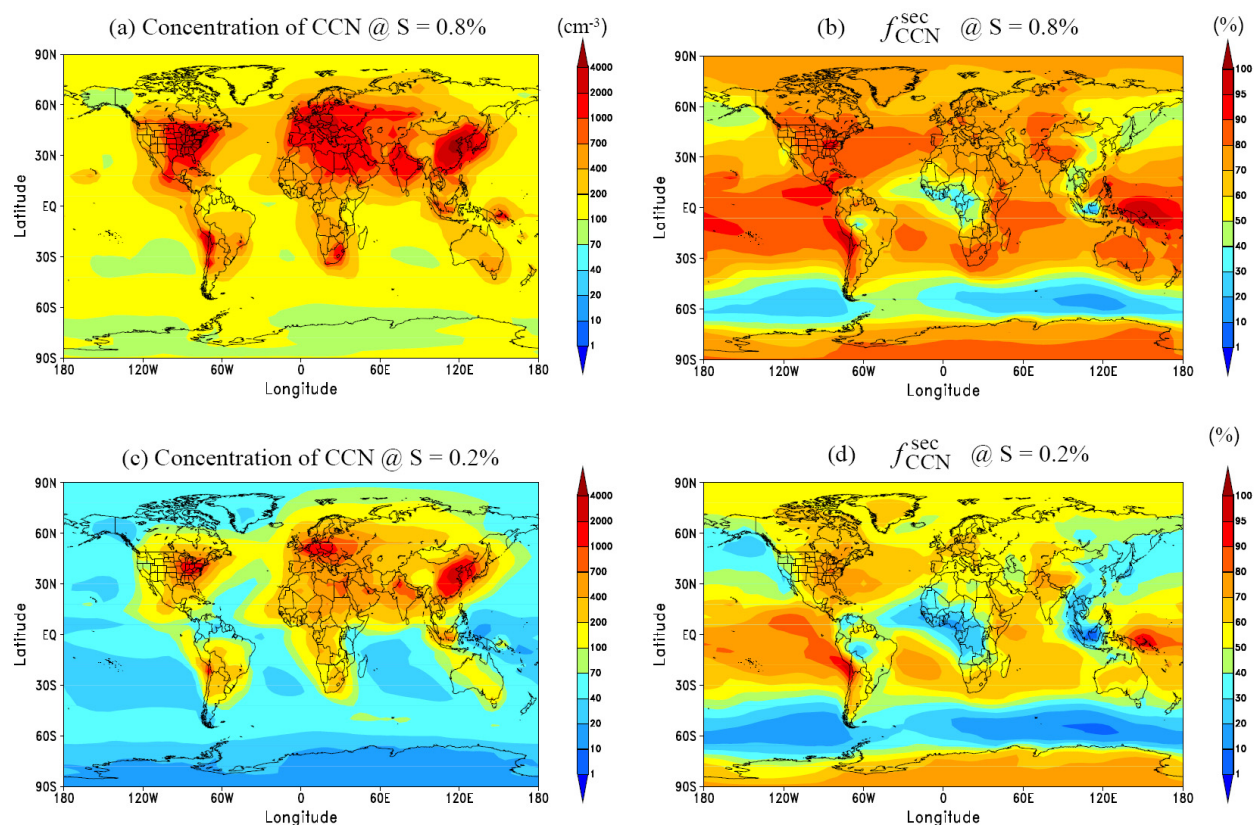


Figure S1. Predicted annual mean CCN concentration at supersaturation of: (a) $S = 0.8\%$ (CCN0.8), and (c) $S = 0.2\%$ (CCN0.2) in the boundary layer (0-1 km). The corresponding fractions of CCN0.8 and CCN0.2 that are secondary ($f_{\text{CCN}}^{\text{sec}}$) are given in (b) and (d).

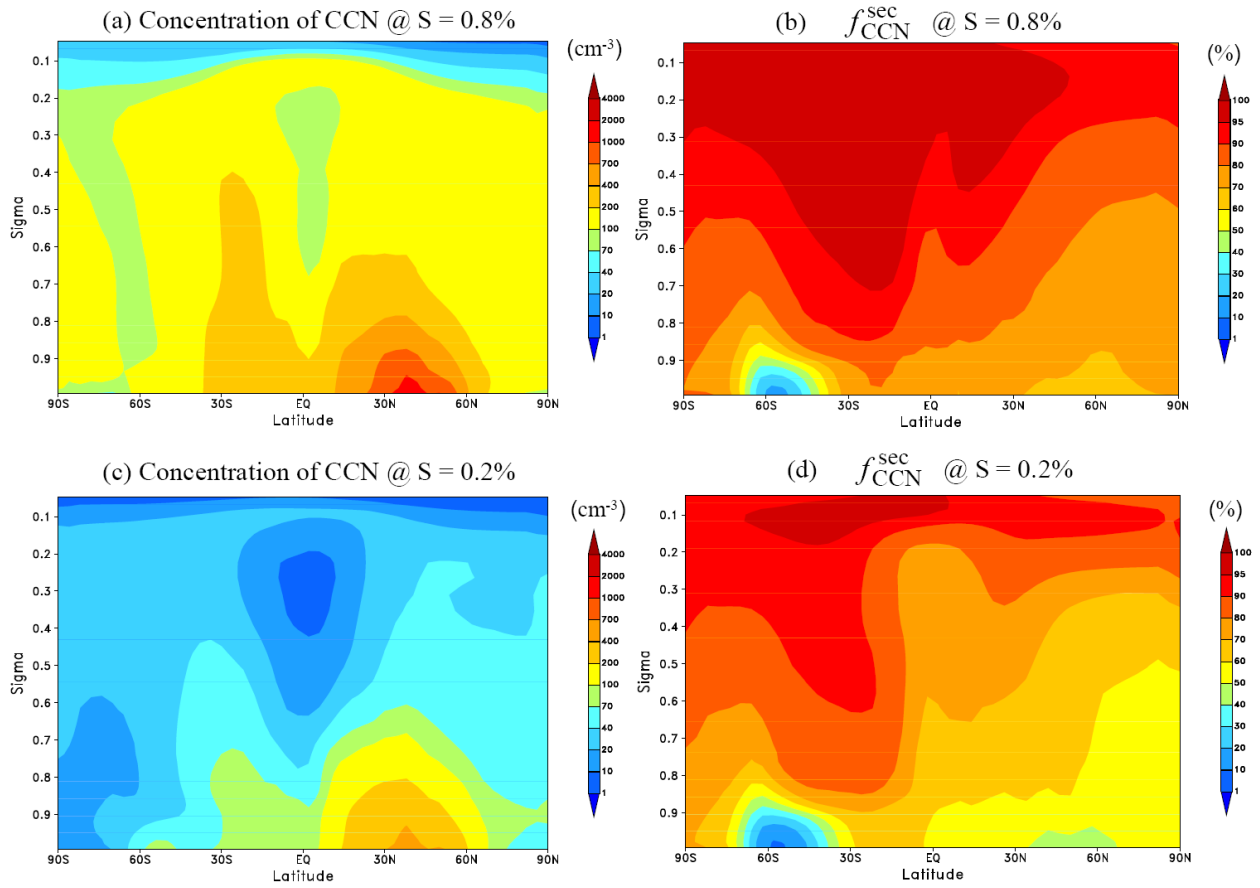


Figure S2. Zonally-averaged latitudinal and vertical distributions of annual mean values of CCN0.8 and CCN0.2, and the corresponding f_{CCN}^{sec} .