



Supplement of

Two years of total column measurements of CO₂, CH₄ and CO in Paris, France

Josselin Doc et al.

Correspondence to: Michel Ramonet (michel.ramonet@lsce.ipsl.fr)

The copyright of individual parts of the supplement might differ from the article licence.

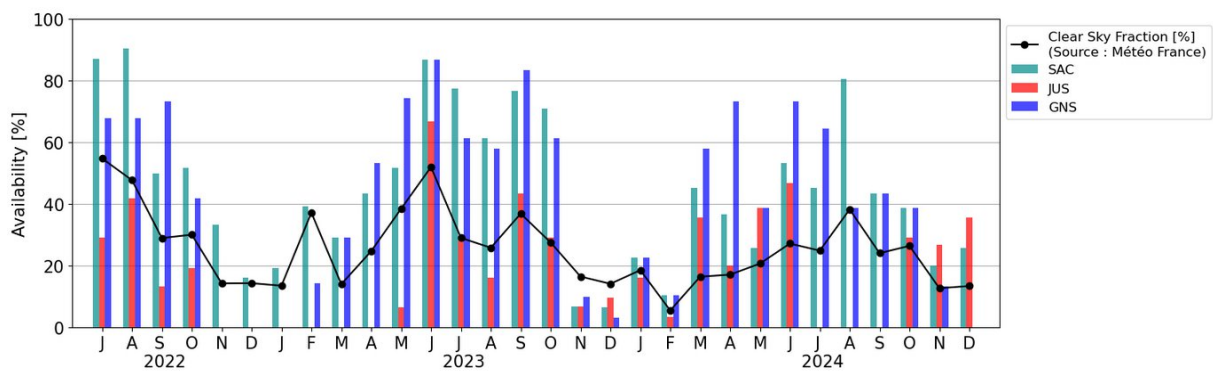


Figure S1. Monthly availability of column measurements in SAC, GNS and JUS. All instruments included for SAC and GNS, high-resolution spectrometer only for JUS. The black line shows the monthly averages of the clear sky fraction in the Paris' region (Source : Météo France).

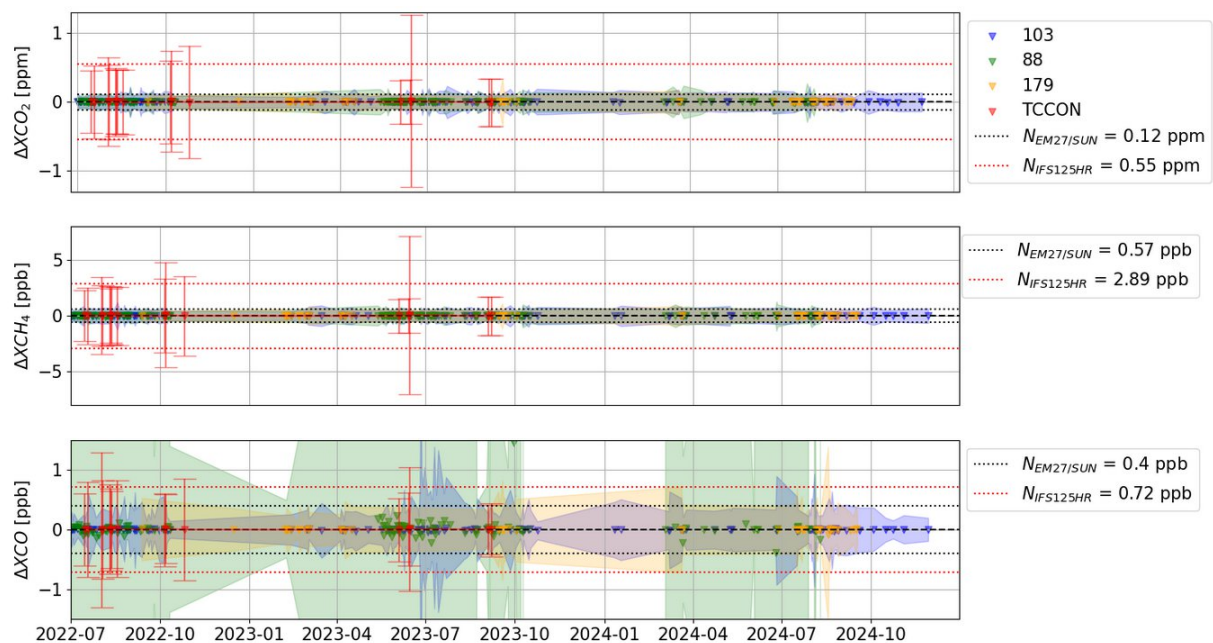


Figure S2. Estimate of the measurement noise for the three instruments of the Paris' network, from 2022-07-01 to 2024-12-31. The two black dotted lines show the noise computed from standard deviations for the EM27/SUN and the red dotted lines show the noise for the IFS 125 HR spectrometer.

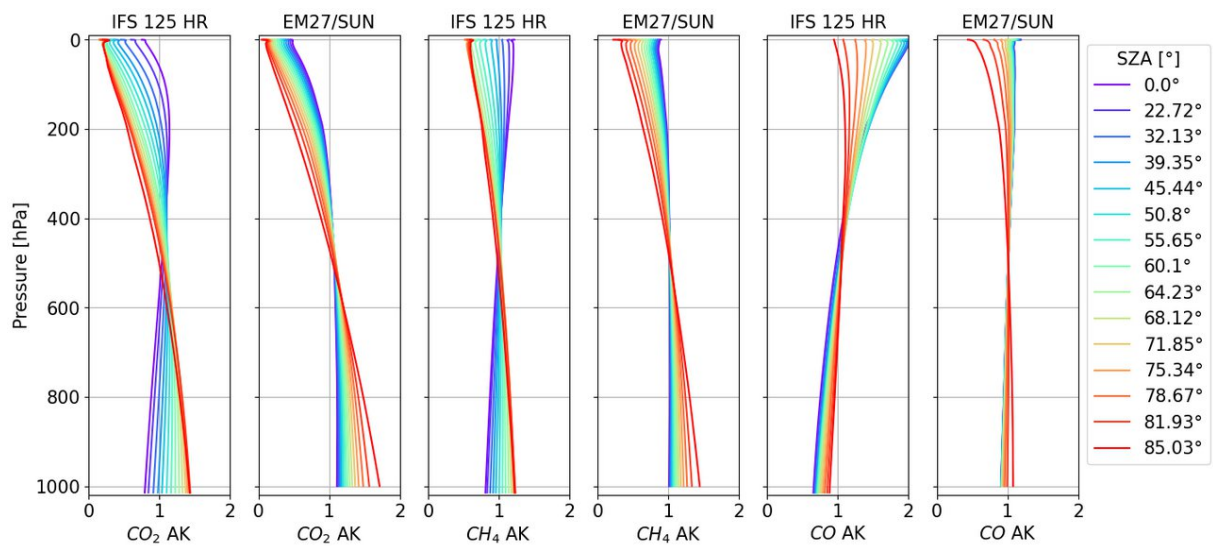


Figure S3. Averaging kernels of the IFS 125 HR and EM27/SUN solar spectrometers. The colorscale indicates the solar zenith angle (red close to 90° and purple towards 0°).

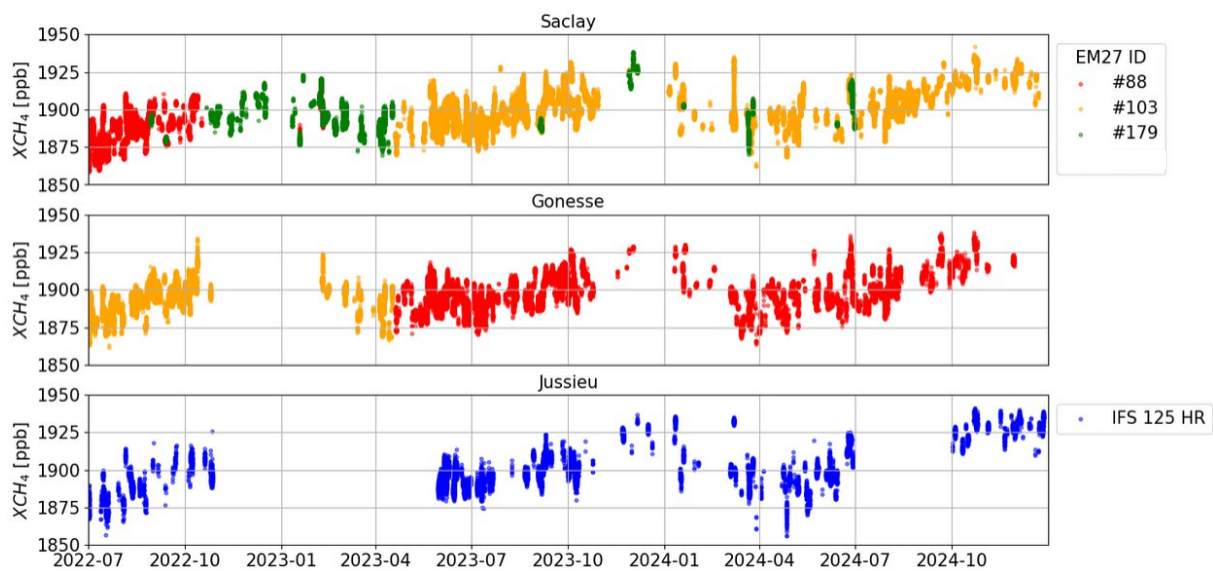


Figure S4. Times series of XCH₄ total column measurements in Saclay, Gonesse and Jussieu from 2022-07-01 to 2024-12-31.

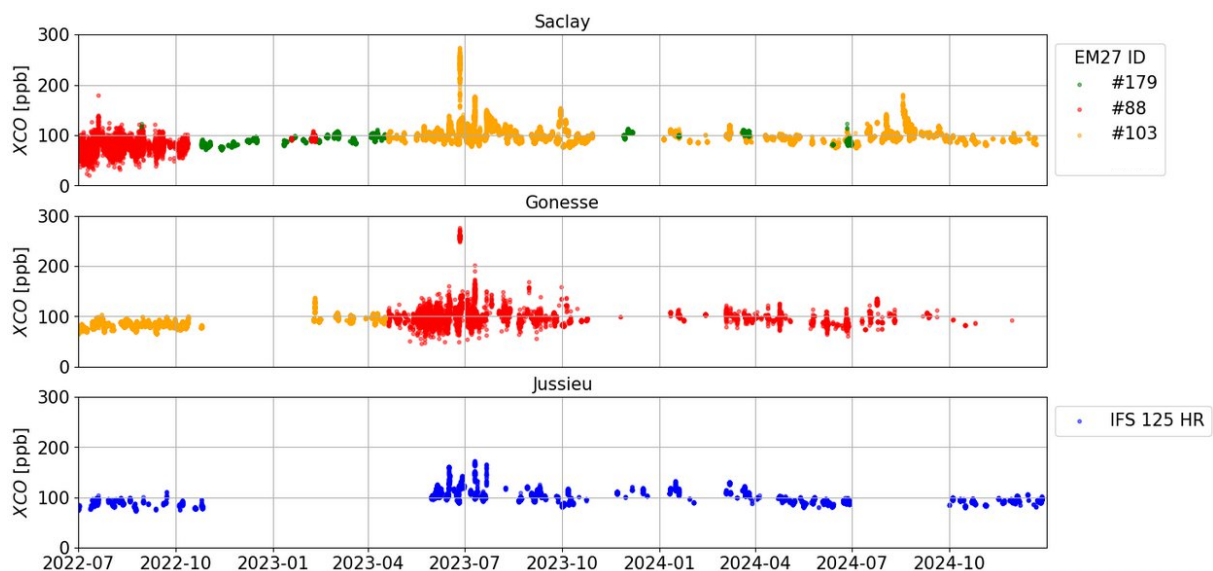


Figure S5. Time series of XCO₂ total column measurements in Saclay, Gonesse and Jussieu from 2022-07-01 to 2024-12-31.

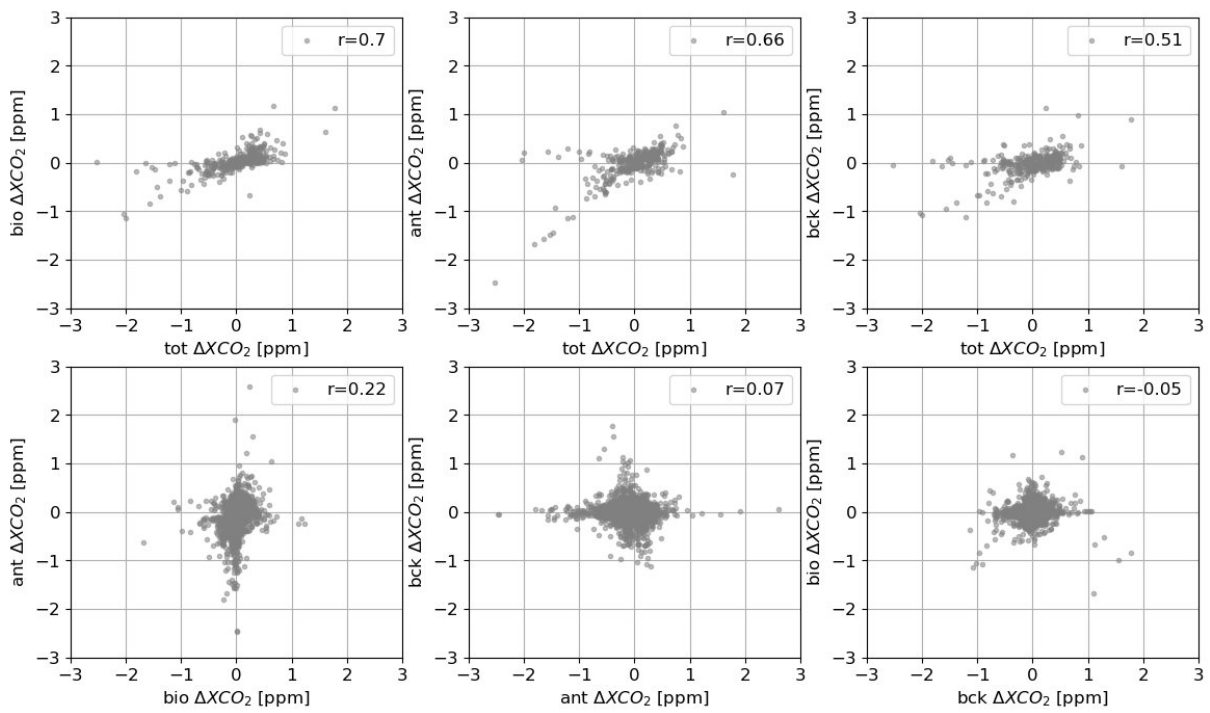


Figure S6. Correlations between simulated components of XCO₂ spatial gradients across the Paris' urban area, from 2022-07-01 to 2024-12-31.