



Supplement of

Impacts of increasing CO₂ on diurnal migrating tide in the equatorial lower thermosphere

Masaru Kogure et al.

Correspondence to: Masaru Kogure (masarukogure@yonsei.ac.kr)

The copyright of individual parts of the supplement might differ from the article licence.

Supplement

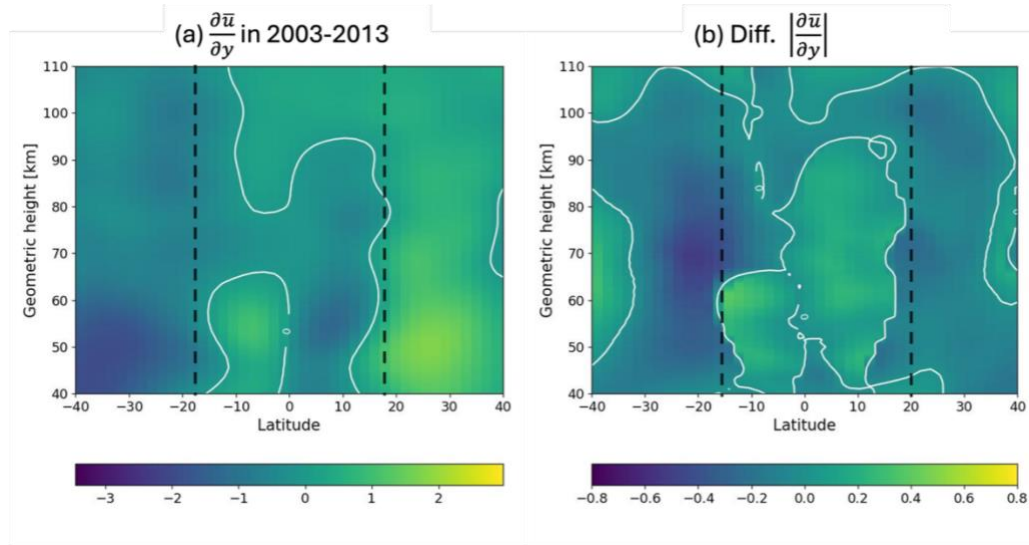


Figure S1. (a) Meridional shear of zonal mean zonal wind in 2003–2013. (b) The difference between absolute meridional shear of zonal mean zonal wind between 2003–2013. Positive means an increase in absolute values of the meridional shear in the future.

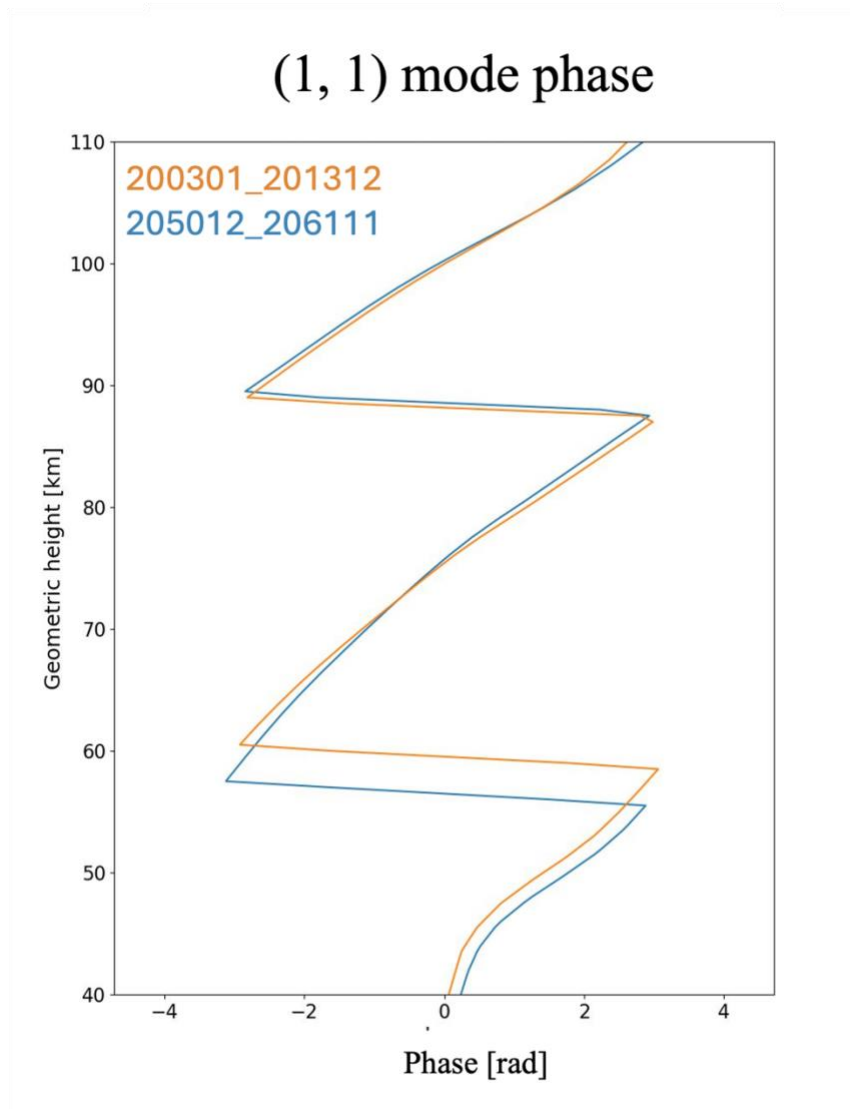


Figure S2. Phases of the tides in 2003–2013 and 2050–2061.