



Machine-learning-based identification of influencing factors and synoptic patterns of foehn on the eastern foothills of the Taihang Mountains, China

Xinpeng Xu, Shoujuan Shu, Guochen Wang, and Weijun Li

Department of Atmospheric Sciences, School of Earth Sciences, Zhejiang University, Hangzhou, 310058, China

Correspondence: Shoujuan Shu (sjshu@zju.edu.cn)

Received: 3 November 2025 – Discussion started: 29 January 2026

Revised: 28 April 2026 – Accepted: 30 April 2026 – Published: 15 May 2026

Abstract. Foehn is generated over alpine terrain and is exerting increasingly pronounced impacts on air pollution, heatwaves, wildfires, and human health under global warming. Due to the complexity of influencing factors of foehn, it is difficult for traditional techniques to identify them, thereby limiting foehn's comprehensive assessments and accurate forecasting. Based on 64 years (1959–2022) of surface-station observations and reanalysis data, this study employs interpretable machine-learning techniques to systematically reveal the key controlling factors and dynamic thresholds of foehn on the eastern foothills of the Taihang Mountains, China. Results show that foehn formation is predominantly controlled by surface conditions and the influence of foehn factors varies seasonally: the leeward wind speed $> 3 \text{ m s}^{-1}$ from $203\text{--}324^\circ$ annually, the windward temperature below -17°C in winter or 9°C in summer, and the windward specific humidity $> 0.07 \text{ g kg}^{-1}$ in winter or 0.75 g kg^{-1} in summer. Synoptic analysis further reveals the weather patterns favorable for foehn occurrence, linking large-scale synoptic conditions with local thresholds for foehn formation. Foehn tends to occur under stable atmospheric stratification, with a surface high over the windward side and a low over the leeward side, together with an upper-level cold trough at 500 hPa and pronounced subsidence at 850 hPa on the leeward side on the eastern foothills of the Taihang Mountains. The findings further reveal that foehn occurrence is most favorable when the Froude number (Fr) over the Taihang Mountains falls between 0.82 and 1.5. Classical theory has only indicated that a Fr of approximately 1 favors foehn. This study, for the first time, extends this to a specific range, advancing the global understanding of foehn dynamics and offering a scientific basis for forecasting foehn and its associated compound disasters.

1 Introduction

The term “foehn” originated from the name of a local wind over the European Alps. Nowadays, it is widely used in meteorology as a generic term to denote any warm and dry downslope wind descending from the leeward slope of a mountain range (Kusaka et al., 2021). Foehn not only influences the local climatic environment of mountainous regions but can also cause a reduction in agricultural production (Lai, 2018), exacerbate the spread of forest fires (Zumbrunnen et al., 2009), and exert adverse effects on air pollution conditions (Li et al., 2020a, 2025a) and human health (Liu et al., 2025; Schneidewind et al., 2025). Therefore, the foehn poses a signifi-

cant challenge to the stability of mountain ecosystems and the sustainability of local socio-economic structures.

In the context of global warming, growing evidence showed that the intensity, frequency, and impact scope of foehn events are expanding globally. Foehn has been confirmed as a key mediator between global warming and cryospheric change. For example, the foehn caused regional warming along the eastern Antarctic Peninsula (Elvidge and Renfrew, 2016), connected large-scale warming to Antarctic ice shelf evolution (Cape et al., 2015), and triggered record-breaking continental temperatures when coupled with atmospheric rivers (Bozkurt et al., 2018). In mid-latitude regions, foehn and foehn-like phenomena have been considered as an

important factor for the historic extreme temperature events, including the 74-year daily maximum temperature record revised in Japan in 2007 (Takane and Kusaka, 2011). In fact, the risks of meteorological disasters are also increasing as the influences of foehn events extend in the past decade. Some studies showed that the intensified foehn-like events can exacerbate surface ozone pollution (Li et al., 2020a), trigger heatwaves (Ning et al., 2019), and increase wildfire risk (Zumbrunnen et al., 2009). Therefore, there are higher requirements for formation mechanisms of foehn and its operational forecasting. At present, it is critical to understand the foehn mechanisms, to clarify the key controlling factors of foehn occurrence and to improve its forecast accuracy in a warming world.

Previous studies have made some important progress on the foehn mechanism. The primary physical mechanism of foehn formation, the synoptic patterns and seasonal variability favorable to foehn occurrence have been identified (Elvidge and Renfrew, 2016; Wiesner et al., 2024). A range of frameworks to predict foehn events was developed in prior studies as well, including discriminant analysis-based foehn indices (Jansing et al., 2022; Widmer, 1966), physical mechanism-based threshold methods (Aytikan et al., 2023), and decision tree-based classification approaches (Elvidge et al., 2020; Francis et al., 2023; Laffin et al., 2021). However, these methods commonly rely on manually selected thresholds, limiting their ability to resolve mixed atmospheric states or adapt to variable synoptic conditions (Stauffer et al., 2024). Although the automated identification methods have also been proposed (Plavcan et al., 2014), they are highly dependent on high-temporal-resolution (ideally sub-hourly) in-situ measurements, which limits their promotion in regions with sparse observation networks (Stauffer et al., 2024). In addition, one forecasting framework based on numerical weather prediction (NWP) models can provide spatially continuous predictions, but are constrained by grid resolution, parameterization uncertainties, and inherent errors of the NWP models, preventing accurate capture of localized terrain-induced circulations (Grajek and Bednorz, 2025; Maier et al., 2025). In summary, previous studies have either been based on analyses of static foehn characteristics or relied on NWP numerical models, with few having objectively and quantitatively isolated the key predictors of foehn formation. To improve foehn prediction, multiple interpretable machine learning methods merit consideration for identifying its controlling factors.

To date, studying on the global foehn events focused on the classic mountain regions, including the Eastern Alps (Seibert, 1990), Antarctica (Speirs et al., 2010), the Andes (Seluchi et al., 2003), the Rocky Mountains (Beran, 1967), the Toyama Plain in Japan (Kusaka et al., 2021), and the southeastern Australia (Sharples et al., 2010). However, there was less typical work on the foehn events in the important mountain regions of China where it could be important for agriculture production, natural forest reservation, or close to

large cities. Moreover, most studies on foehn in China primarily focused on the spatiotemporal characteristics analyses based on statistical methods (Shilin et al., 1993; Wang et al., 2012; Zhao et al., 2021) and associated impacts of foehn (Chen and Lu, 2015; Li et al., 2020a; Ning et al., 2019). Based on the complex topographic conditions and typical foehn phenomena in the Taihang Mountains (Shilin et al., 1993; Wang et al., 2012), we noticed that the foehn events could occur frequently there, as an important geographical boundary between the second and third topographic steps of China. However, there is little in-depth investigation of the formation drivers and synoptic patterns of foehn in the Taihang Mountains.

In the Taihang Mountain region located in Northern China, the permanent population reaches 30.3 million, with Taiyuan and Shijiazhuang cities located on the windward and leeward sides, respectively. These two cities represent the two typical densely populated cities. As an important agricultural and industrial base in China, the Taihang Mountains are endowed with abundant natural, mineral, and tourism resources. What are the main factors influencing foehn formation? Do these factors exhibit thresholds and seasonal variations? How do these factors act within synoptic patterns to promote foehn occurrence? Addressing these questions is essential for better forecasting of foehn in populated complex-terrain regions, aiding disaster prevention, mitigation, and environmental protection.

2 Data and Methods

2.1 Study Area

The study area is the Taihang Mountain region in Northern China (Fig. 1), with major cities including Taiyuan, the capital of Shanxi Province (the blue dot in Fig. 1b, station elevation: nearly 800 m) and Shijiazhuang, the capital of Hebei Province (the middle red dot in Fig. 1b, station elevation: 81 m). Topographically, the Taihang Mountains are one of China's most important mountain ranges, extending approximately 500 km in length and 40–50 km in width, roughly spanning 110–117° E and 35–41° N (the orange solid line in Fig. 1b). They form a striking northeast–southwest oriented topographic barrier with steep eastern slopes facing the North China Plain and more gradual western slopes descending to the Loess Plateau. The average altitude of the mountains is 1000–1400 m, and the highest peak, Mount Wutai, which exceeds 3000 m is located at the northern end of the Taihang Mountains (the northernmost tip of the orange solid line in Fig. 1b). This pronounced topographic relief generates favorable conditions for foehn formation when moist air masses are forced to ascend the western slopes and descend adiabatically along the eastern leeward side.

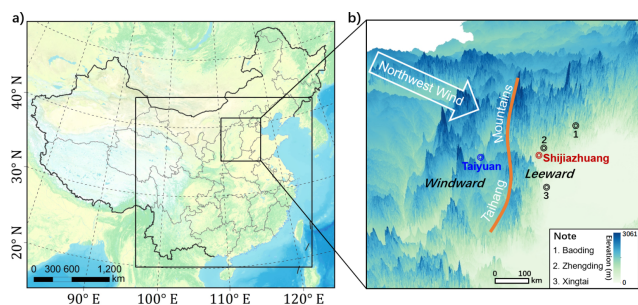


Figure 1. Regional map. (a) Major part of China (large black box) and the key area of foehn occurrence along the eastern foothills of the Taihang Mountains (small black box). (b) Geographical locations of meteorological stations in the region of Taihang Mountains, where blue and red dots indicate stations located on the windward and leeward sides, respectively.

2.2 Data and Processing

Meteorological data from five surface observation stations in the Taihang Mountain region (one located on the windward side and four on the leeward side; Fig. 1b) were obtained from the National Oceanic and Atmospheric Administration (NOAA), covering a period of 64 years (1959–2022) with a temporal resolution of 3 h. Corresponding upper-air data were acquired from the ERA5 reanalysis dataset of the European Centre for Medium-Range Weather Forecasts (ECMWF), with a spatial resolution of $0.25^\circ \times 0.25^\circ$ and an hourly temporal resolution.

Since foehn occurs on the leeward slope, and the leeward stations vary in distance from the mountains, we compared the mean hourly temperatures during the main foehn season (winter, refer to Sect. 3.2) over the past 10 years (2012–2022) at the four leeward stations to select a representative site. The results show that Shijiazhuang and Xingtai, with closer proximity to the mountains, exhibit consistent diurnal variations, a pattern also observed in the more distant stations of Baoding and Zhengding. Moreover, the temperatures at stations closer to the mountains are higher than those at more distant stations (Fig. S1 in the Supplement). Therefore, Shijiazhuang, where is close to the mountains, exhibits more pronounced foehn characteristics and is densely populated, was selected as the representative leeward station, while Taiyuan was chosen as the windward station for subsequent analyses. For simplicity, the subscripts *Wind* and *Lee* are used below to denote the windward and leeward stations and their associated meteorological variables, respectively.

This study is limited to surface observations and lacks long-term upper-air data. To ensure the appropriate use of the high-resolution ERA5 reanalysis dataset, a comparative analysis was first performed with ground-based station measurements. Taking the average hourly surface temperature, humidity, and pressure during winter over the past 10 years (2012–2022), the results (Fig. S2) indicate that ERA5 grid

data are slightly lower in magnitude than the station observations but exhibit highly consistent temporal variations, confirming the reliability of the ERA5 dataset. Therefore, this study will subsequently use 64 years of station observations and ERA5 reanalysis data to characterize surface and upper-air meteorological factors, respectively, for modeling and analysis.

2.3 Definition of foehn

Considering the local standard of Hebei Province and the foehn definitions proposed by Mony, Xiong, Kusaka, Aichinger-Rosenberger, Stauffer, and others (Aichinger-Rosenberger et al., 2022; Kusaka et al., 2021; Mony, 2020; Stauffer et al., 2024; Xianping et al., 2020), this study defines foehn events as summarized in Table 1.

2.4 Model Comparison

After cleaning and preprocessing the station observations and ERA5 reanalysis data, machine learning methods were employed to analyze the main influencing factors of foehn events on the eastern foothills of the Taihang Mountains. Six machine learning models were selected for this task: (1) K-Nearest Neighbor Classification (KNN), classifies samples based on the majority class among their k closest neighbors in the feature space (Cover and Hart, 1967); (2) Logistic Regression, estimates the probability of class membership using a logistic function to model the relationship between input features and the binary outcome (Kleinbaum, 2010); (3) Neural Network (NN), learns hierarchical representations through interconnected layers of neurons that apply nonlinear transformations to capture complex patterns in the data (Krizhevsky et al., 2017); (4) Decision Tree, recursively partitions the feature space into homogeneous regions based on feature values to make predictions (Salzberg, 1994); (5) Random Forest (RF), is an ensemble method that constructs multiple decision trees using bootstrap sampling (bagging) and random feature selection at each split, and predictions are made by aggregating votes from all trees, which reduces overfitting and improves generalization compared to single decision trees (Breiman, 2001); (6) Adaptive Boosting (AdaBoost), sequentially trains weak learners, adjusting sample weights to focus on misclassified instances and combining their predictions through weighted voting to form a strong classifier (Freund and Schapire, 1997). As our reviewing literature in the introduction, those conventional statistical methods struggle to analyze foehn formation due to the nonlinear interactions among multiple atmospheric variables and the complex topographic modulation. These machine learning methods adopted in this study are able to automatically learn optimal decision boundaries and quantify factor importance via interpretable machine-learning techniques among the handling high-dimensional data and complex nonlinear relationships.

Table 1. Definition of foehn events on the eastern foothills of the Taihang Mountains, China.

Definition Criteria	Explanation
Potential temperature (θ) difference $\Delta\theta > 2\text{K}$	$\theta_{\text{Lee}} - \theta_{\text{Wind}} > 2\text{K}$, where $\theta = T\left(\frac{1000}{p}\right)^{0.286}$
Relative humidity (Rh) difference $\Delta\text{Rh} > 20\%$	$\text{Rh}_{\text{Lee}} - \text{Rh}_{\text{Wind}} < -20\%$
Wind direction (Dir) Dir = [WSW, WNW]	$\text{Dir}_{\text{Lee}} = [\text{WSW}, \text{WNW}] \cap \text{Dir}_{\text{Wind}} = [\text{WSW}, \text{WNW}]$ Wind directions on the windward and leeward sides occur within the WSW (West-Southwest) to WNW (West-Northwest) range.
Wind speed (W) $W > 2\text{m s}^{-1}$	$W_{\text{Lee}} > 2\text{m s}^{-1} \cap W_{\text{Wind}} > 2\text{m s}^{-1}$ Wind speeds on the windward and leeward sides both faster than 2m s^{-1} .

The preprocessed data were divided into training and testing sets, accounting for 70 % and 30 % of the total samples, respectively. The training set was used for model training with stratified 5-fold cross-validation, and hyperparameters were tuned to optimize model performance. Since the defined foehn samples were much fewer than the non-foehn samples, this study addressed the class imbalance issue by combining Synthetic Minority Over-sampling Technique (SMOTE) (Chawla et al., 2002), Random Undersampling method (Liu and Tsoumakas, 2020), and Class Weight method (Yan et al., 2017) before conducting model training.

Based on model performance and reliability metrics, the most suitable machine learning model was selected. The correlation matrix (Fig. S3) shows that the correlation between individual environmental factors and foehn occurrence is very low (correlation coefficients generally < 0.07), indicating that the complex nonlinear relationship between environmental factors and foehn events may lead to the difficulty of modeling with traditional methods, thus justifying the use of machine learning in this study. Evaluation results of accuracy, precision, recall, and F1 score (Fig. S4) indicate that only the decision tree model achieves values above 0.8 for all four metrics. The confusion matrix (Fig. S5) reveals that, since the 0 label (non-foehn samples) far outnumbers the 1 label (foehn samples), relying on a single metric such as accuracy is insufficient to evaluate model performance, and metrics like precision must also be considered. Receiver Operating Characteristic (ROC) curves and Area Under the Curve (AUC) values (Fig. S6) show that logistic regression, decision tree, random forest, and AdaBoost models all have AUC values above 0.95, with the ROC curves of decision tree, random forest, and AdaBoost closely approaching the top-left corner, indicating superior performance. Learning curves (Fig. S7) reveal that the KNN model suffers from overfitting while logistic regression is underfitted (overfitted) when the sample size is less (greater) than 50 000. Although the neural network fits well, it exhibits large fluctuations and uncertainties. The models of random forest and AdaBoost perform well with large samples but poorly with small samples, whereas the decision tree model consistently performs well. Therefore, the decision tree model was chosen finally

as the basis for this study. Subsequently, Shapley Additive Explanations (SHAP) values (Lundberg and Lee, 2017) were applied to interpret the model results and reveal the key factors influencing foehn formation on the eastern foothills of the Taihang Mountains.

2.5 Selection of Influencing Factors

Based on the previous studies (Aichinger-Rosenberger et al., 2022; Kusaka et al., 2021; Mony, 2020; Stauffer et al., 2024), this study extracted a total of 28 meteorological factors from the windward and leeward sides of the Taihang Mountains over the 64-year period (1959–2022), including 10 surface variables and 18 upper-air variables (Table 2), to serve as predictors for training the machine learning models. Although windward precipitation is relevant to foehn processes, it was not included as a predictor in this work because it is more an outcome variable than a precursor signal in the existing physical mechanisms studies of foehn (Elvidge and Renfrew, 2016; Kusaka et al., 2021). And its high spatiotemporal variability and observational uncertainties offer limited predictive value for model training. Windward specific humidity (Q_{Wind}) was used to represent moisture conditions instead, with its significant impacts on foehn formation confirmed by SHAP analysis (Fig. 2d).

3 Results

3.1 The dominant factors contributing to the formation of foehn

In this study, SHAP values are employed to quantify the contribution of each influencing factor to foehn formation. Across the entire year, we identified four most influential factors: W_{Lee} , Dir_{Lee} , T_{Wind} , Q_{Wind} (Fig. 2a). Figure 2a further demonstrates that surface-related factors dominate the formation of foehn winds, whereas the contribution of upper-air factors is comparatively minor. The most influential upper-air factor, TG_{Wind} , only ranks eighth, demonstrating that foehn initiation and maintenance on the eastern Taihang foothills are governed primarily by near-surface processes.

Table 2. The 28 meteorological factors used as input variables for the machine learning models.

	Leeward side	Windward side	Explanation
Surface factors	SLP _{Lee}	SLP _{Wind}	Sea level pressure
	T _{Lee}	T _{Wind}	Temperature
	W _{Lee}	W _{Wind}	Wind speed
	Dir _{Lee}	Dir _{Wind}	Wind direction
	Q _{Lee}	Q _{Wind}	Specific humidity
Upper-air factors	TG _{Lee}	TG _{Wind}	Temperature gradient between 850 and 500 hPa, obtained by the slope from the linear regression
	Q8 _{Lee}	Q8 _{Wind}	Specific humidity at 850 hPa
	W8 _{Lee}	W8 _{Wind}	Wind speed at 850 hPa
	Dir8 _{Lee}	Dir8 _{Wind}	Wind direction at 850 hPa
	Q7 _{Lee}	Q7 _{Wind}	Specific humidity at 700 hPa
	W7 _{Lee}	W7 _{Wind}	Wind speed at 700 hPa
	Dir7 _{Lee}	Dir7 _{Wind}	Wind direction at 700 hPa
	Z5 _{Lee}	Z5 _{Wind}	Geopotential height at 500 hPa
	T5 _{Lee}	T5 _{Wind}	Temperature at 500 hPa
Label	Foehn		A foehn event occurred

W_{Lee} ranks first among all factors, indicating that elevated wind speeds on the leeward side strongly favor foehn formation or persistence. The SHAP scatter plot (Fig. 2b) shows an abrupt increase in SHAP values from 0 to approximately 0.15 once W_{Lee} exceeds 3 m s⁻¹, signifying a sharp increase in foehn likelihood. The finding highlights 3 m s⁻¹ of W_{Lee} as a critical threshold for the foehn formation. The average SHAP values curve (black line in Fig. 2b) further exhibits a higher peak near 8 m s⁻¹, suggesting that this wind speed is even more conducive to foehn occurrence. The details are associated with seasons and discussed in Sect. 3.2,

The positive contribution of T_{Wind} decreases with increasing temperature (Fig. 2c), implying that low-temperature conditions on the windward side facilitate foehn development. The average SHAP values curve crosses zero at 3° (black line in Fig. 2c), highlighting 3° of T_{Wind} as a critical threshold for the foehn formation. As a result, the peak SHAP value around -18 °C suggests that such low temperature on the windward side are highly favorable for the foehn genesis.

In contrast, the SHAP mean for Q_{Wind} remains largely negative, denoting an overall inhibitory effect on foehn formation (Fig. 2d). The curve crosses zero at roughly 0.1 g kg⁻¹ (black line in Fig. 2d), marking the threshold beyond which the inhibitory influence of Q_{Wind} becomes pronounced. The negative contribution weakens as Q_{Wind} increases, implying that the drier (lower specific-humidity) conditions on the windward side favor the foehn occurrence.

Comparing factors between the windward and leeward sides reveals that the same meteorological variables exert markedly different influences depending on location. For example, leeward wind speed influences foehn formation far more strongly than windward wind speed, because the accel-

erated subsidence of cross-mountain flow and its ability to reach the leeward stations constitute the foremost dynamical prerequisite for foehn formation. Conversely, the windward 2-m temperature and surface specific humidity exert stronger influences than the leeward 2-m temperature, underscoring that a cold, moist environment on the windward side favors the development of the foehn winds. Collectively, these results indicate that foehn occurrence requires a certain synoptic background that promotes dry-adiabatic descent of the cross-mountain flow, thereby warming and drying the leeward boundary layer and finally amplifying the surface foehn signal. The details are further examined in Sect. 3.3.

Dir_{Lee} is the second most influential factor for foehn occurrence on the eastern foothills of the Taihang Mountains (Fig. 2a). Figure 3 shows the SHAP-based interpretable analysis for this factor. When Dir_{Lee} falls between 203 and 324° (the light-pink sector in Fig. 3), the SHAP values are positive. This wind-direction range on the leeward side favors the foehn occurrence, and approximately 41 % of the samples fall within this positively contributing range (Fig. 3a). Within the narrower sector 237 to 294° (rose-red shading in Fig. 3), the positive contribution of the SHAP values further intensifies, signifying even more favorable conditions for the foehn formation. The average SHAP values curve (black line in Fig. 3a) peaks when Dir_{Lee} equals 275°, revealing that a leeward wind direction of 275°, roughly 52° relative to the mountain axis, is most conducive to the foehn development in this region. Considering the relation between the positive contribution range (red shading in Fig. 3b) and the orientation of the central Taihang Mountains (black line in Fig. 3b), it becomes evident that the favorable wind directions are not strictly perpendicular to the ridge. Rather, foehn is more

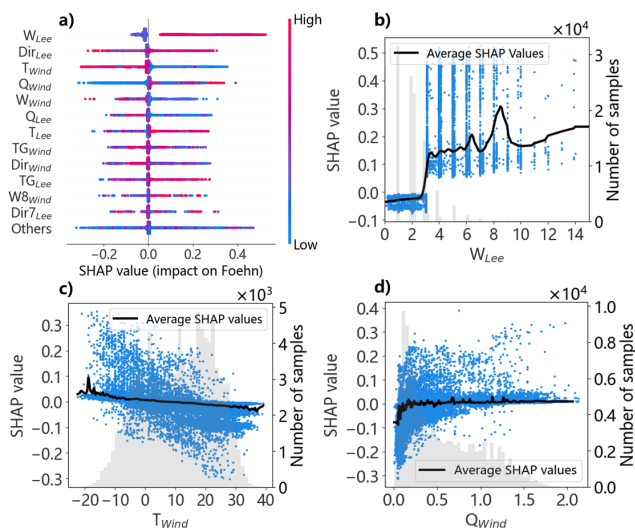


Figure 2. The dominant factors of foehn formation and their associated SHAP values revealed by interpretable machine-learning models. (a) SHAP summary plot, where the horizontal axis denotes SHAP values, individual dots represent samples, and dot color encodes the magnitude of the sample's feature value. (b) SHAP scatter plot for the leeward surface wind speed. (c) Same as (b) but for the windward 2-m temperature. (d) Same as (b) but for the windward surface specific humidity. In panels (b)–(d), the horizontal and vertical axes indicate the feature value and the SHAP value, respectively; dots denote individual samples, the grey histogram bars show sample counts, and the black curve traces the average SHAP values.

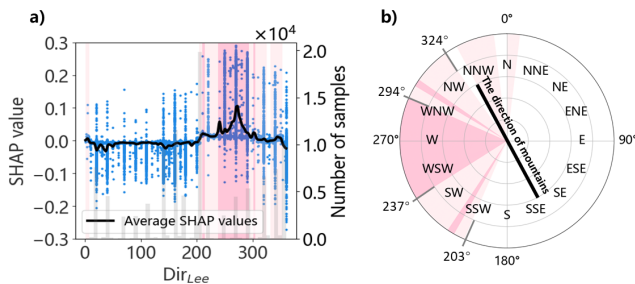


Figure 3. The role of the leeward surface wind direction and its contribution to foehn formation revealed by the interpretable machine-learning models. (a) SHAP-value scatter plot for the leeward surface wind direction. (b) Coordinate diagram of the leeward surface wind direction; the black straight line indicates the orientation of the central Taihang Mountains. In both (a) and (b), the shaded sectors correspond to each other: light pink shading denotes the positive-contribution with mean SHAP > 0, while rose red shading marks the largest positive mean SHAP values.

likely when the leeward wind makes a certain angle with the mountain range.

This wind-direction-dependent foehn formation mechanism is fundamentally supported by the Froude number (Fr) dynamics and terrain-airflow coupling effects, consistent with the principles of trans-barrier flow and orographic

modification documented in foehn research (Durrán, 1990). Froude number, defined as $Fr = \frac{u}{Nh}$, (where u is the flow velocity normal to the topographic barrier, N is the Brunt-Väisälä frequency, and h is the height of the topographic barrier), quantifies the balance between inertial forces and buoyancy restoring forces, thereby determining the flow behavior when encountering topographic obstacles (Prósper et al., 2019; Wiesner et al., 2024). When $Fr \ll 1$ there are significant nonlinear effects and blocking, whereas for $Fr \gg 1$ the opposite occurs (Smolarkiewicz and Rotunno, 1989, 1990). The Fr around 1 indicates a transitional regime between the two states and favorable conditions for the formation of downslope lee windstorms and hydraulic jumps (Prósper et al., 2019; Wiesner et al., 2024). Within this range, the airflow neither fully circumvents the range ($Fr \gg 1$) nor is completely blocked ($Fr \ll 1$), thereby sustaining a persistent downslope warming that favors foehn occurrence. Considering the u is the velocity of the flow normal to the topographic barrier, wind direction can be calculated or verified by aiming $Fr \approx 1$ (Fig. S8). Calculations show that the α (the angle between W_{Wind} and the mountain orientation) is equal to 41.81° and the wind direction is equal to 278.81° , which is really close to the most conducive wind direction (275°) to the foehn development given by our SHAP method. Based on the obtained favorable wind direction ($237\text{--}294^\circ$, which means $\alpha = 33\text{--}90^\circ$) identified in the SHAP model, the favorable Fr range is calculated as 0.82 to 1.5 for the formation of foehn on the eastern foothills of the Taihang Mountains. This finding not only agrees with classical theory but also extends it to a specific range for the first time, thereby enriching the global understanding of foehn dynamics. Such a result cannot be obtained from traditional theoretical studies.

Across all foehn cases examined here, approximately 56.4 % (1473/2611) occurs when Dir_{Lee} lies within the optimal range of 237 to 294° . Seasonally, 42.3 % (623/1473) of winter foehns and 9.2 % (135/1473) of summer foehns fall within this favorable range, underscoring that the role of large-scale circulation patterns varies across seasons.

3.2 Seasonal variation of dominant foehn factors

To examine the seasonal dominant factors governing foehn formation on the eastern Taihang foothills, we re-trained models for winter and summer, respectively. The reason is that winter (December to February) is the peak season for haze and wildfire occurrences in North China (Huang et al., 2023; Zhang et al., 2020), and summer (June to August) is the key period drive the heat waves, ozone, and ultrafine particles (Li et al., 2020b; Zhang et al., 2024). The result shows that the ranking of the leading factors is nearly identical in winter and summer, where W_{Lee} , T_{Wind} , Q_{Wind} consistently occupy the top three positions (Fig. 4a, f). Based on the fourth-ranking T_{Lee} in winter to Q_{Lee} in summer, we concluded that temperature becomes relatively more important in winter foehns, while humidity gained prominence

in summer foehns. These three surface variables also dominate the annual SHAP ranking (Fig. 2a), demonstrating that the leading role of surface factors is season-independent. On the annual scale, however, the leeward wind-direction factor (Dir_{Lee}) becomes more important. We noticed that the large-scale wind direction was mainly determined by the weather-scale circulation field. Therefore, the favorable synoptic circulations further modulated foehn occurrence by persistently influencing the leeward wind direction.

In addition to the seasonal differences in the dominant factors of the foehn wind, the influence thresholds and contribution strengths of specific factors also vary seasonally, which are summarized in Table S1. Figures 2b, 4b and 4g reveal that W_{Lee} remains the overwhelmingly dominant factor in both seasons, with a universal threshold of 3 m s^{-1} . However, once this threshold is exceeded, the SHAP values in winter are markedly higher than those in summer, and a pronounced peak appears around 8.5 m s^{-1} in winter which is absent in summer (Fig. 4b, g). The result indicates that the synoptic patterns conducive to high leeward wind speeds are more effective in triggering foehn events in winter than in summer.

In contrast to the influence of leeward wind speed, the temperature impacts become dominated by windward T_{Wind} rather than T_{Lee} . Positive contribution of T_{Wind} decreases monotonically with increasing temperature in both seasons (Figs. 2c, 4c, h), but the thresholds vary seasonally, being 3°C annually, -6°C in winter, and 9°C in summer. Overall, the SHAP magnitudes are larger in summer, with a distinct peak near 7°C that is absent in winter. As a result, a low windward temperature is more conducive to the foehn formation in summer than in winter.

The impacts of Q_{Wind} on foehn formation exceed that of Q_{Lee} , yet Q_{Wind} exerts a negative contribution in all seasons, with the inhibitory effect weakening as the humidity increases (Figs. 2d, 4d, 4i). The thresholds also vary seasonally, being 0.1 g kg^{-1} annually, 0.07 g kg^{-1} in winter, and 0.75 g kg^{-1} in summer. Overall, the SHAP magnitudes are larger in winter than in summer, which is opposite to the T_{Wind} pattern, demonstrating that a moist windward environment is more favorable for foehn development in winter than in summer.

3.3 Synoptic patterns associated with foehn occurrence

Xiong, Wang et al. (Xianping et al., 2020) noted that foehns on the eastern Taihang foothills are most pronounced in winter. Across the 2611 foehn events identified during the 64 years in this study, 790 occurred in spring, 376 in summer, 558 in autumn, and 887 in winter, indicating that winter foehn events account for the largest proportion of the dataset. Our study also shows that winter foehn events also exhibit the longest persistence, which is up to 24 h, whereas in the other seasons no event exceeds 6 h. Although previous studies documented the annual and seasonal variability of foehns

(Xianping et al., 2020), the synoptic background conducive to their development remained unexamined.

We further define more precise winter foehn events on the eastern Taihang foothills simultaneously meeting the criteria in Sect. 2.3 and the thresholds ($W_{Lee} > 3 \text{ m s}^{-1}$, $T_{Wind} < -6^\circ\text{C}$, $Q_{Wind} > 0.07 \text{ g kg}^{-1}$, and $Dir_{Lee} = 203\text{--}324^\circ$) mentioned in Sect. 3.1 and 3.2. Using ERA5 reanalysis data spanning the most recent decade (2012–2022), we composited and analyzed the synoptic patterns favorable for foehn in winter on the eastern foothills of the Taihang Mountains (Fig. 5).

Figure 5a, b display the winter-foehn anomalies in sea-level pressure (SLP) and 10 m wind relative to the climatological mean. It shows the zero-anomaly line (white contour) precisely transects the Taihang Mountains and the SLP was higher than climatological mean in southwest of the mountains (dark-green shading), accompanied by an anticyclonic (clockwise) wind shear on the synoptic scale. However, there was lower than climatological mean in the northeast (yellow shading), accompanied by cyclonic (counterclockwise) wind (Fig. 5a). Consequently, the region of Taihang Mountains is typically under a synoptic pattern featuring high pressure on the windward side and low pressure on the leeward side, accompanied by west-to-southwesterly upslope flow at the windward side (blue dots) and west-to-northwesterly downslope flow at the leeward side (red dots) (Fig. 5b). This configuration favors the advection of warm and moist air masses which descend with sustained wind speed and thereby fosters foehn formation. The conclusion further confirmed the previous findings based on the SHAP method in Sect. 3.1.

Figure 5c, d display the surface specific-humidity anomalies. A pronounced dry anomaly extends northward from South China to the region of Taihang Mountains (Fig. 5c). Although the entire mountain area is drier than climatology, the leeward side exhibits a sharp “upward bulge”, forming the driest core at the same latitude (Fig. 5d). The combination of downslope flow and the inherently dry leeward environment further amplifies the foehn warming drying signal on the leeward side. The synoptic analysis again corroborates the results in Sect. 3.1.

At 500 hPa (Fig. 5e, f), a westerly cold trough (thick black line) is formed over the region of Taihang Mountains, with its low-pressure center situated on the leeward side (red dot) (Fig. 5e). Strong northerly or north-easterly flow behind the trough drives vigorous subsidence on the leeward side (black contours in Fig. 5f; maximum $\approx 0.7 \text{ Pa s}^{-1}$), supplying favorable dynamic conditions for the foehn formation through adiabatic warming during subsidence and downward momentum transfer.

Figure 5g, h reveal the atmospheric stratification stability through vertical potential-temperature (θ) profiles. The foehn events exhibit lower θ than the climatological mean between 700 and 300 hPa, with the largest deficit near 450 hPa on the leeward side (Fig. 5h). This result shows that the presence

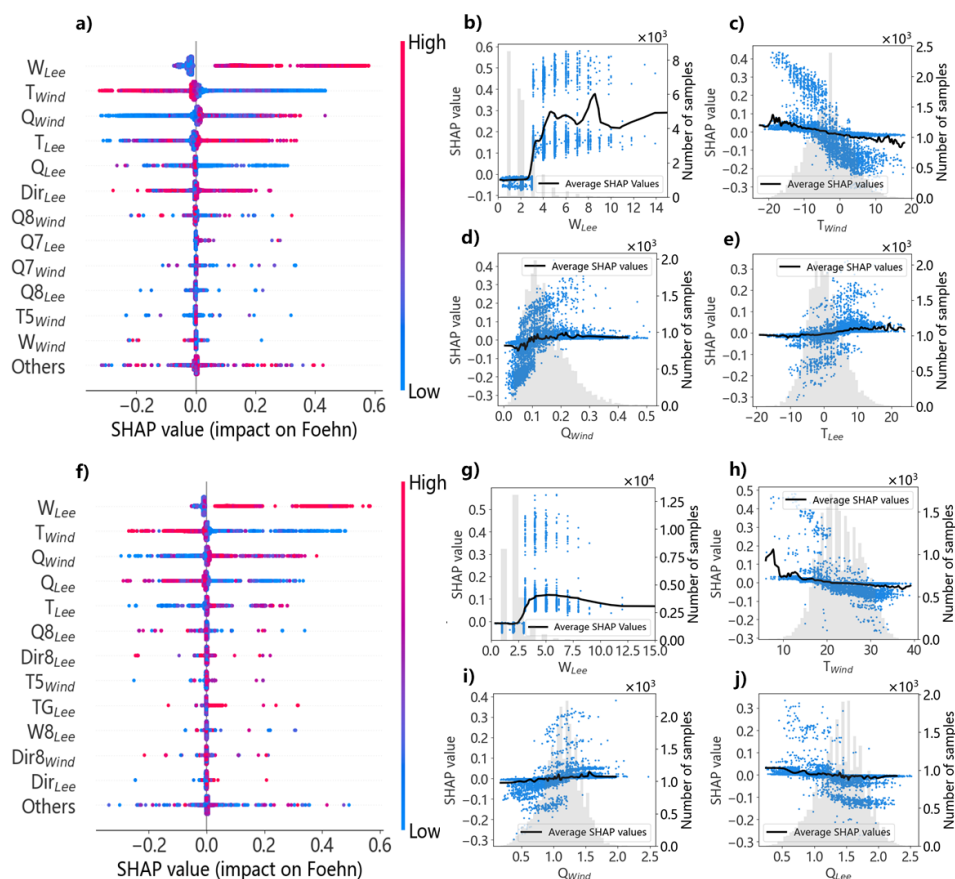


Figure 4. The seasonal dominant factors of foehn formation and their associated SHAP values revealed by interpretable machine-learning models. **(a)** SHAP summary plot for the key factors influencing winter foehn formation. **(f)** As in **(a)** but for summer. **(b)** SHAP scatter plot for the leeward surface wind speed in winter. **(c–e)** As in **(b)** but for the windward 2-m temperature, the windward surface specific humidity, and the leeward 2-m temperature in winter, respectively. **(g)** SHAP scatter plot for the leeward surface wind speed in summer. **(h–j)** As in **(g)** but for the windward 2-m temperature, the windward surface specific humidity, and the leeward surface specific humidity in summer, respectively.

of a mid-tropospheric cold air mass positively contributes to the foehn formation. Compared with climatology, the leeward side exhibits lower θ above 650 hPa, whereas the windward side shows a markedly lower θ within the 850–700 hPa lower troposphere (Fig. 5g). It indicates that a pattern, which is colder in lower troposphere on the windward side and colder in upper layer on the leeward side, provides a stable atmospheric environment highly conducive to foehn events. In fact, both windward and leeward sides are within a stably stratified environment (θ increases with height) overall (Fig. 5h). Previous results showed that the stable stratification inhibits vertical mixing of the lower tropospheric air flow, leading to blocking of the cold air in the lower windward layer, while the warmer and drier air in the upper layer flows over the mountain and sinks along isentropic surfaces on the leeside (i.e., isentropic drawdown mechanism (Elvidge and Renfrew, 2016; Wiesner et al., 2024)). Also, the stable stratification provides favorable dynamic conditions for the development of mountain waves and hydraulic

jumps (Wiesner et al., 2024), which further accelerate the sinking of leeward airflow and enhance the foehn effects of temperature increase and humidity decrease. The large-scale environmental conditions we identified in Fig. 5e, f further reveal the synoptic patterns responsible for the formation of stable stratification during foehn events in the Taihang Mountains, linking large-scale synoptic conditions with local foehn formation mechanisms and deepening the systematic understanding of foehn development.

In summary, foehns on the eastern Taihang Mountains preferentially occur in a stably stratified atmospheric environment with a surface pressure pattern characterized by a high- and low-pressure system on the windward and leeward sides, respectively. The foehn events are accompanied by an upper-level cold trough at 500 hPa and pronounced subsidence at 850 hPa on the leeward side.

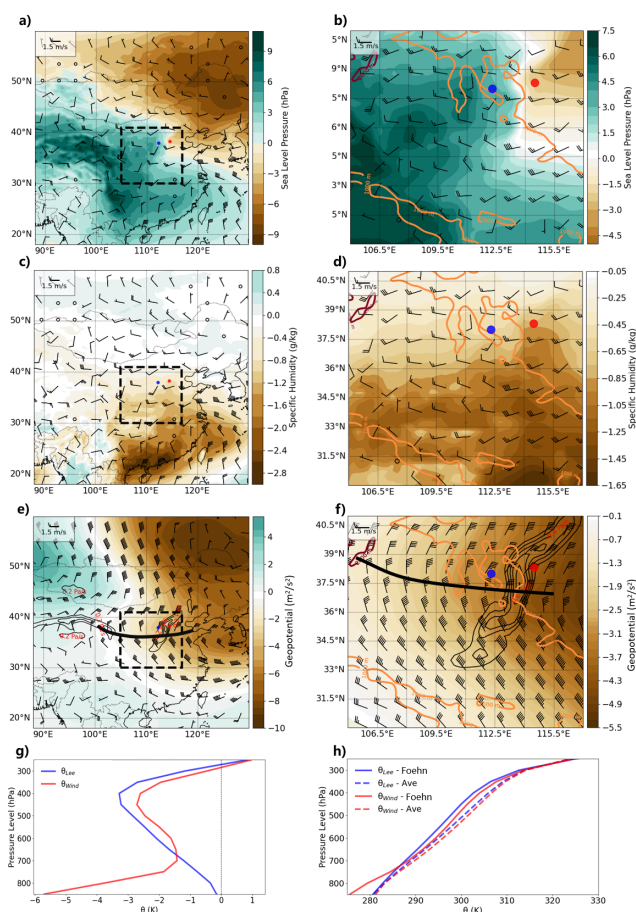


Figure 5. Anomalies of meteorological fields relative to the climatological mean during foehn events in winter on the eastern foothills of the Taihang Mountains: (a–b) Sea-level pressure (shaded) and 10 m wind field; (c–d) Surface specific humidity and 10 m wind field; (e–f) 500 hPa geopotential height (thick black contour denotes the westerly transverse trough), wind field, and 850 hPa vertical velocity (black contours, solid lines indicate subsidence); (g) Vertical profiles of potential temperature on the windward and leeward sides. Blue and red dots mark the windward and leeward stations, respectively; the orange solid line indicates the position of the Taihang Mountains (defined by the 1000 m elevation contour); the black dashed box in the left column outlines the domain shown in the right column. (h) Vertical profiles of potential temperature on the windward and leeward sides; “Foehn” and “Ave” denote the foehn events and the climatological mean, respectively.

4 Discussion and Conclusion

Based on the 64 years (1959–2022) of surface observations and ERA5 reanalysis data, and by integrating an interpretable machine-learning model with synoptic analysis, this study finds the dominant factors of foehn events on the eastern foothills of the Taihang Mountains as well as their spatiotemporal variability and its matched synoptic patterns.

Our study identifies W_{Lee} , Dir_{Lee} , T_{Wind} , Q_{Wind} as the four most influential factors for the foehn formation on the east-

ern Taihang foothills. In contrast to the previous reported foehn formation in Antarctica (Bozkurt et al., 2018) or the Alps (Aichinger-Rosenberger et al., 2022; Zumbrunnen et al., 2009), which rely heavily on upper-level jets or atmospheric rivers, the Taihang foehn is governed almost exclusively by the surface factors and local topography, with upper-air contributes little. This result underscores a surface-dominated mechanism driven by local topography and the coupled surface wind–thermal system. Therefore, we recommend that the government should reinforce the weather monitoring stations along the eastern Taihang Mountain, prioritizing real-time observations of the leeward wind and of the windward temperature and specific humidity. Meanwhile, it is necessary to optimize the regional observation network so that more accurate inputs can be provided for foehn early warning systems.

By applying the SHAP-based explainable machine learning, we have quantified the critical dynamic thresholds for the foehn formation in this region and demonstrated their pronounced seasonal and spatial variability for the first time, instead of only setting fixed and empirical thresholds that lack seasonal and spatial adaptability (Aytikan et al., 2023; Elvidge et al., 2020; Francis et al., 2023; Jansing et al., 2022; Laffin et al., 2021; Widmer, 1966). The threshold of the leeward 10-m wind speed (W_{Lee}) remains stably above 3 m s^{-1} year-round, yet its contribution to foehn occurrence is significantly stronger in winter than in summer. Differently, the threshold of the windward 2-m temperature (T_{Wind}) is seasonally variable, being -10°C annually, -17°C in winter, and 9°C in summer, with stronger impacts in summer than in winter. The windward specific humidity (Q_{Wind}) is predominantly suppressive and its thresholds are 0.1 g kg^{-1} annually, 0.07 g kg^{-1} in winter and 0.75 g kg^{-1} in summer, exerting a greater influence in winter than in summer. The thresholds of leeward wind-direction (Dir_{Lee}) are given as the favorable range from 203 to 324° , with the range from 237 to 294° being most conducive to foehn formation. Based on these findings, the Froude number (Fr) range most favorable for foehn occurrence in the Taihang Mountains is identified as 0.82 to 1.5 . This result cannot be obtained through traditional theoretical methods alone. Classical theory has only indicated that a Fr of approximately 1 favors foehn. This study, for the first time, extends this to a specific range, advancing the global understanding of foehn dynamics. These thresholds can directly guide the development of seasonally and slope-resolved (windward versus leeward) differentiated early-warning models. For example, winter warnings should particularly target persistent strong foehns with an extended lead time (up to 24 h) and focus on leeward wind speeds (W_{Lee}) exceeding 3 m s^{-1} and windward specific humidity (Q_{Wind}) above 0.07 g kg^{-1} , while summer warnings should focus on windward temperature (T_{Wind}) below 9°C (Fig. 4).

Further analysis reveals that winter foehns not only account for 34 % of annual events but also exhibit the longest durations (up to 24 h). These persistent episodes coincide

with stable synoptic patterns that favor subsidence warming (Fig. 5). Such conditions enhance low-level inversions and suppress boundary-layer ventilation, allowing pollutants to accumulate in a shallow surface layer and form a wintertime leeward haze layer (Gao et al., 2015; Li et al., 2020b; Wang et al., 2015; Zhong et al., 2019). The severe haze pollution events in winter pose potentially severe health risks along the Taihang Mountain foothills. Consequently, winter alerts must pay particular attention to the superposition of foehn and stagnant weather.

Unlike the persistent haze pollution in winter, summer foehns act synergistically with heat waves and ozone episodes. Previous work shows that foehns can trigger anomalously hot and dry heat waves (Takane and Kusaka, 2011), amplifying the surface radiative heating and accelerating the photochemical reactions (Li et al., 2020b; Zhang et al., 2024; Zhou et al., 2025), thereby causing rapid ozone accumulation. Summer foehn warnings should therefore monitor the coupled threshold of the rising temperature and plunging humidity on the leeward side to mitigate compound heat-ozone hazards. Moreover, the foehn's dry-hot signature sharply reduces humidity and elevates temperature on the leeward side, significantly increasing fire danger during the dry autumn–winter vegetation period (Zumbrunnen et al., 2009). Our study shows that westerly winds $> 3 \text{ m s}^{-1}$ during foehn events can further accelerate fire spread. An integrated “foehn–fire” monitoring and early-warning mechanism is therefore essential.

Composite analysis of winter foehn events, which dominate among different seasons, reveals the following favorable synoptic background: (1) A pronounced pressure gradient with higher pressure on the windward side and lower pressure on the leeward side drives westerly flow across the range; (2) the ambient air mass is cold and dry, whereas the leeward slope becomes markedly warm and dry; (3) a 500-hPa cold trough in the westerlies affects the leeward slope, inducing westerly or north-westerly downslope flow and pronounced subsidence in the lower troposphere (850 hPa); (4) the thermal structure is characterized by a stable stratification with colder air at low levels on the windward side and colder mid-upper levels on the leeward side. Therefore, priority should be given to the surface pressure gradient, the low-level vertical motion (especially subsidence), and the position of westerly troughs and ridges across the range of Taihang Mountains. Through identifying the specific synoptic patterns favorable for foehn occurrence in the Taihang Mountains, we link large-scale synoptic conditions with local thresholds for the formation of foehn in this study. This cross-scale physical connection and its mutual validation are difficult to achieve with conventional statistical methods alone. Therefore, we also recommend that when developing foehn-warning models, it is better to combine the surface thresholds with favorable synoptic-pattern information to construct a reliable “synoptic pattern plus surface factors” framework that overcomes the physical interpretability limi-

tations of traditional single-model approaches (Seluchi et al., 2003; Stauffer et al., 2024).

Based on the findings above, here we recommend integrating the dynamic thresholds identified here into coupled meteorology–chemistry models to establish a unified “foehn–pollution–fire” monitoring and response system, thereby enhancing regional disaster prevention and climate-change resilience. In winter, the system should prioritize haze events triggered by continuous, intense foehn events that coincide with surface-based temperature inversions, and should extend the forecast horizon to 24 h. In summer, the focus shifts to foehn-triggered heatwaves and ozone pollution, with intensified joint monitoring of high temperature and low humidity on the leeward side. A dynamic fire-risk module also should be embedded, coupling foehn wind-speed and humidity thresholds with a vegetation dryness index to enable early detection and rapid response to natural hazards. Furthermore, our future study will further develop a regression model to predict specific foehn intensity metrics (e.g., foehn wind speed and warming magnitude), and reapply the SHAP interpretable method to quantify and reveal the key influencing factors governing these intensity indicators. These will serve as a useful reference for understanding foehn winds in other regions of the world.

Data availability. The NOAA station data is available online: Hourly/Sub-Hourly Observational Data: <https://www.ncei.noaa.gov/maps/hourly/> (NOAA, 2026). The ECMWF reanalysis data is available online: ECMWF Reanalysis v5 | ECMWF: <https://www.ecmwf.int/en/forecasts/dataset/ecmwf-reanalysis-v5> (ECMWF, 2026).

Supplement. The supplement related to this article is available online at <https://doi.org/10.5194/acp-26-6507-2026-supplement>.

Author contributions. S.S. and X.X. designed the study. X.X. conducted the research, including collecting the data, training the models and synoptic analysis. S.S. and X.X. interpreted the findings and wrote the first draft of the paper. G.W. provided support for the study area mapping. S.S., W.L. and X.X. contributed to the revision of the paper. All authors contributed to the discussion of the paper.

Competing interests. The contact author has declared that none of the authors has any competing interests.

Disclaimer. Publisher's note: Copernicus Publications remains neutral with regard to jurisdictional claims made in the text, published maps, institutional affiliations, or any other geographical representation in this paper. The authors bear the ultimate responsibility for providing appropriate place names. Views expressed in the

text are those of the authors and do not necessarily reflect the views of the publisher.

Acknowledgements. The authors gratefully acknowledge the two anonymous reviewers for their constructive comments and valuable help.

Financial support. This research has been supported by the National Natural Science Foundation of China (grant nos. U2442203 and 42375001).

Review statement. This paper was edited by Huilin Chen and reviewed by three anonymous referees.

References

- Aichinger-Rosenberger, M., Brockmann, E., Crocetti, L., Soja, B., and Moeller, G.: Machine learning-based prediction of Alpine foehn events using GNSS troposphere products: first results for Altdorf, Switzerland, *Atmos. Meas. Tech.*, 15, 5821–5839, <https://doi.org/10.5194/amt-15-5821-2022>, 2022.
- Ayitikan, M., Li, X., He, Q., Musha, Y., Tang, H., Li, S., Zhong, Y., and Ren, G.: Characteristics and Establishment of Objective Identification Criteria and Predictors for Foehn Winds in Urumqi, China, *Atmos.*, 14, 1206, <https://doi.org/10.3390/atmos14081206>, 2023.
- Beran, D. W.: Large Amplitude Lee Waves and Chinook Winds, *J. Appl. Meteorol. Climatol.*, 6, 865–877, [https://doi.org/10.1175/1520-0450\(1967\)006<0865:LALWAC>2.0.CO;2](https://doi.org/10.1175/1520-0450(1967)006<0865:LALWAC>2.0.CO;2), 1967.
- Bozkurt, D., Rondanelli, R., Marin, J. C., and Garreaud, R.: Foehn Event Triggered by an Atmospheric River Underlies Record-Setting Temperature Along Continental Antarctica, *J. Geophys. Res.-Atmos.*, 123, 3871–3892, <https://doi.org/10.1002/2017JD027796>, 2018.
- Breiman, L.: Random forests, *Mach. Learn.*, 45, 5–32, <https://doi.org/10.1023/A:1010933404324>, 2001.
- Cape, M. R., Vernet, M., Skvarca, P., Marinsek, S., Scambos, T., and Domack, E.: Foehn winds link climate-driven warming to ice shelf evolution in Antarctica, *J. Geophys. Res.-Atmos.*, 120, 11037–11057, <https://doi.org/10.1002/2015JD023465>, 2015.
- Chawla, N. V., Bowyer, K. W., Hall, L. O., and Kegelmeyer, W. P.: SMOTE: synthetic minority over-sampling technique, *J. Artif. Intell. Res.*, 16, 321–357, <https://doi.org/10.1613/jair.953>, 2002.
- Chen, R. and Lu, R. Y.: Comparisons of the Circulation Anomalies Associated with Extreme Heat in Different Regions of Eastern China, *J. Clim.*, 28, 5830–5844, <https://doi.org/10.1175/JCLI-D-14-00818.1>, 2015.
- Cover, T. M. and Hart, P. E.: Nearest Neighbor Pattern Classification, *IEEE Trans. Inf. Theory*, 13, 21, <https://doi.org/10.1109/TIT.1967.1053964>, 1967.
- Durran, D. R.: Mountain Waves and Downslope Winds, in: *Atmospheric Processes over Complex Terrain*, edited by: Blumen, W., American Meteorological Society, Boston, MA, 59–81, https://doi.org/10.1007/978-1-935704-25-6_4, 1990.
- ECMWF: ECMWF Reanalysis v5 | ECMWF, ECMWF, <https://www.ecmwf.int/en/forecasts/dataset/ecmwf-reanalysis-v5> (last access: 1 June 2025), 2026.
- Elvidge, A. D. and Renfrew, I. A.: The Causes of Foehn Warming in the Lee of Mountains, *Bull. Am. Meteorol. Soc.*, 97, 455–466, <https://doi.org/10.1175/BAMS-D-14-00194.1>, 2016.
- Elvidge, A. D., Kuipers Munneke, P., King, J. C., Renfrew, I. A., and Gilbert, E.: Atmospheric drivers of melt on Larsen C Ice Shelf: Surface energy budget regimes and the impact of foehn, *J. Geophys. Res.-Atmos.*, 125, e2020JD032463, <https://doi.org/10.1029/2020JD032463>, 2020.
- Francis, D., Fonseca, R., Mattingly, K. S., Lhermitte, S., and Walker, C.: Foehn winds at Pine Island Glacier and their role in ice changes, *The Cryosphere*, 17, 3041–3062, <https://doi.org/10.5194/tc-17-3041-2023>, 2023.
- Freund, Y. and Schapire, R. E.: A decision-theoretic generalization of on-line learning and an application to boosting, *J. Comput. Syst. Sci.*, 55, 119–139, <https://doi.org/10.1006/jcss.1997.1504>, 1997.
- Gao, Y., Zhang, M., Liu, Z., Wang, L., Wang, P., Xia, X., Tao, M., and Zhu, L.: Modeling the feedback between aerosol and meteorological variables in the atmospheric boundary layer during a severe fog–haze event over the North China Plain, *Atmos. Chem. Phys.*, 15, 4279–4295, <https://doi.org/10.5194/acp-15-4279-2015>, 2015.
- Grajek, Z. and Bednorz, E.: Climatology and circulation conditions of potential foehn occurrence in the Polish Tatra Mountains, *Acta Geophys.*, 73, 955–967, <https://doi.org/10.1007/s11600-024-01372-w>, 2025.
- Huang, X., Ding, K., Liu, J., Wang, Z., Tang, R., Xue, L., Wang, H., Zhang, Q., Tan, Z.-M., Fu, C., Davis, S. J., Andreae, M. O., and Ding, A.: Smoke-weather interaction affects extreme wildfires in diverse coastal regions, *Science*, 379, 457–461, <https://doi.org/10.1126/science.add9843>, 2023.
- Jansing, L., Papritz, L., Dürr, B., Gerstgrasser, D., and Sprenger, M.: Classification of Alpine south foehn based on 5 years of kilometre-scale analysis data, *Weather Clim. Dyn.*, 3, 1113–1138, <https://doi.org/10.5194/wcd-3-1113-2022>, 2022.
- Kleinbaum, D. G. a. K., M.: *Logistic Regression: A Self Learning Text*, 3rd edn., Springer, New York, <https://doi.org/10.1007/978-1-4419-1742-3>, 2010.
- Krizhevsky, A., Sutskever, I., and Hinton, G. E.: ImageNet Classification with Deep Convolutional Neural Networks, *Commun. ACM*, 60, 84–90, <https://doi.org/10.1145/3065386>, 2017.
- Kusaka, H., Nishi, A., Kakinuma, A., Doan, Q.-V., Onodera, T., and Endo, S.: Japan’s south foehn on the Toyama Plain: Dynamical or thermodynamical mechanisms?, *Int. J. Climatol.*, 41, 5350–5367, <https://doi.org/10.1002/joc.7133>, 2021.
- Laffin, M., Zender, C., Singh, S., Van Wessem, J., Smeets, C., and Reijmer, C.: Climatology and evolution of the Antarctic Peninsula föhn wind-induced melt regime from 1979–2018, *J. Geophys. Res.-Atmos.*, 126, e2020JD033682, <https://doi.org/10.1029/2020JD033682>, 2021.
- Lai, L. W.: The relationship between extreme weather events and crop losses in central Taiwan, *Theor. Appl. Climatol.*, 134, 107–119, <https://doi.org/10.1007/s00704-017-2261-z>, 2018.
- Li, K., Jacob, D. J., Shen, L., Lu, X., De Smedt, I., and Liao, H.: Increases in surface ozone pollution in China from 2013 to 2019: anthropogenic and meteorological influences, *Atmos.*

- Chem. Phys., 20, 11423–11433, <https://doi.org/10.5194/acp-20-11423-2020>, 2020a.
- Li, W., Shao, L., Wang, W., Li, H., Wang, X., Li, Y., Li, W., Jones, T., and Zhang, D.: Air quality improvement in response to intensified control strategies in Beijing during 2013–2019, *Sci. Total Environ.*, 744, 140776, <https://doi.org/10.1016/j.scitotenv.2020.140776>, 2020b.
- Li, W. J., Ito, A., Wang, G. C., Zhi, M. K., Xu, L., Yuan, Q., Zhang, J., Liu, L., Wu, F., Laskin, A., Zhang, D. Z., Zhang, X. Y., Zhu, T., Chen, J. M., Mihalopoulos, N., Bougiatioti, A., Kanakidou, M., Wang, G. H., Hu, H. L., Zhao, Y., and Shi, Z. B.: Aqueous-phase secondary organic aerosol formation on mineral dust, *Natl. Sci. Rev.*, 12, <https://doi.org/10.1093/nsr/nwaf221>, 2025.
- Liu, B. and Tsoumakas, G.: Dealing with class imbalance in classifier chains via random undersampling, *Knowledge-Based Syst.*, 192, 105292, <https://doi.org/10.1016/j.knsys.2019.105292>, 2020.
- Liu, H., Lei, J., Liu, Y., Zhu, T., Chan, K., Chen, X., Wei, J., Deng, F., Li, G., Jiang, Y., Bai, L., Wang, K., Chen, J., Lan, Y., Xia, X., Wang, J., Wei, C., Li, Y., Chen, R., Gong, J., Duan, X., Zhang, K., Kan, H., Shi, X., Guo, X., and Wu, S.: Hospital admissions attributable to reduced air pollution due to clean-air policies in China, *Nat. Med.*, 31, 1688–1697, <https://doi.org/10.1038/s41591-025-03515-y>, 2025.
- Lundberg, S. M. and Lee, S.-I.: A Unified Approach to Interpreting Model Predictions, in: *Advances in Neural Information Processing Systems (NIPS 2017)*, 2, 847–856, <https://doi.org/10.48550/arXiv.1705.07874>, 2017.
- Maier, P., Klisho, T., Formayer, H., and Lehner, F.: Analysing the future trends of foehn-enabling synoptic patterns over two valleys in the Eastern Alps in CMIP5 EURO-CORDEX models, *Theor. Appl. Climatol.*, 156, 155, <https://doi.org/10.1007/s00704-025-05365-7>, 2025.
- Mony, C.: Evaluating foehn development in a changing climate using machine learning and investigating the impact of foehn on forest fire occurrence and severity, *ETH Zurich*, <https://doi.org/10.3929/ethz-b-000594509>, 2020.
- Ning, G. C., Yim, S. H. L., Wang, S. G., Duan, B. L., Nie, C. Q., Yang, X., Wang, J. Y., and Shang, K. Z.: Synergistic effects of synoptic weather patterns and topography on air quality: a case of the Sichuan Basin of China, *Clim. Dyn.*, 53, 6729–6744, <https://doi.org/10.1007/s00382-019-04954-3>, 2019.
- NOAA: Hourly/Sub-Hourly Observational Data, NOAA, <https://www.ncei.noaa.gov/maps/hourly/> (last access: 1 June 2025), 2026.
- Plavcan, D., Mayr, G. J., and Zeileis, A.: Automatic and probabilistic foehn diagnosis with a statistical mixture model, *J. Appl. Meteorol. Climatol.*, 53, 652–659, <https://doi.org/10.1175/JAMC-D-13-0267.1>, 2014.
- Prósper, M. A., Sosa Tinoco, I., Otero-Casal, C., and Miguez-Macho, G.: Downslope windstorms in the Isthmus of Tehuantepec during Tehuantepec events: a numerical study with WRF high-resolution simulations, *Earth Syst. Dynam.*, 10, 485–499, <https://doi.org/10.5194/esd-10-485-2019>, 2019.
- Salzberg, S. L.: C4.5: Programs for Machine Learning by J. Ross Quinlan. Morgan Kaufmann Publishers, Inc., 1993, *Mach. Learn.*, 16, 235–240, <https://doi.org/10.1007/BF00993309>, 1994.
- Schneidewind, T., Lee, S., Vicedo-Cabrera, A. M., and Saucy, A.: The risk of hospitalization associated with foehn winds and temperature in the mountainous region of Switzerland, *Environ. Epidemiol.*, 9, <https://doi.org/10.1097/EE9.0000000000000418>, 2025.
- Seibert, P.: South Foehn Studies since the Alpex Experiment, *Meteorol. Atmos. Phys.*, 43, 91–103, <https://doi.org/10.1007/BF01028112>, 1990.
- Seluchi, M. E., Norte, F. A., Satyamurty, P., and Chou, S. C.: Analysis of three situations of the Foehn effect over the Andes (zonda wind) using the Eta-CPTEC regional model, *Weather Forecast.*, 18, 481–501, [https://doi.org/10.1175/1520-0434\(2003\)18<481:AOTSOT>2.0.CO;2](https://doi.org/10.1175/1520-0434(2003)18<481:AOTSOT>2.0.CO;2), 2003.
- Sharples, J. J., Mills, G. A., McRae, R. H. D., and Weber, R. O.: Foehn-Like Winds and Elevated Fire Danger Conditions in Southeastern Australia, *J. Appl. Meteorol. Climatol.*, 49, 1067–1095, <https://doi.org/10.1175/2010JAMC2219.1>, 2010.
- Shilin, Z., Rongke, W., Yanbo, G., Jianlong, T., and Zhizeng, S.: The Foehn in the Middle Range of Taihang Mountain, *Meteorological Monthly*, 3–6+29, <http://qxqk.nmc.cn/qxen/article/abstract/19930201> (last access: 6 May 2026), 1993.
- Smolarkiewicz, P. K. and Rotunno, R.: Low Froude Number Flow Past Three-Dimensional Obstacles. Part I: Baroclinically Generated Lee Vortices, *J. Atmos. Sci.*, 46, 1154–1164, [https://doi.org/10.1175/1520-0469\(1989\)046<1154:LFNFPT>2.0.CO;2](https://doi.org/10.1175/1520-0469(1989)046<1154:LFNFPT>2.0.CO;2), 1989.
- Smolarkiewicz, P. K. and Rotunno, R.: Low Froude Number Flow Past Three-Dimensional Obstacles. Part II: Upwind Flow Reversal Zone, *J. Atmos. Sci.*, 47, 1498–1511, [https://doi.org/10.1175/1520-0469\(1990\)047<1498:LFNFPT>2.0.CO;2](https://doi.org/10.1175/1520-0469(1990)047<1498:LFNFPT>2.0.CO;2), 1990.
- Speirs, J. C., Steinhoff, D. F., McGowan, H. A., Bromwich, D. H., and Monaghan, A. J.: Foehn Winds in the McMurdo Dry Valleys, Antarctica: The Origin of Extreme Warming Events, *J. Clim.*, 23, 3577–3598, <https://doi.org/10.1175/2010JCLI3382.1>, 2010.
- Stauffer, R., Zeileis, A., and Mayr, G. J.: Long-Term Foehn Reconstruction Combining Unsupervised and Supervised Learning, *Int. J. Climatol.*, 44, 5890–5901, <https://doi.org/10.1002/joc.8673>, 2024.
- Takane, Y. and Kusaka, H.: Formation Mechanisms of the Extreme High Surface Air Temperature of 40.9 °C Observed in the Tokyo Metropolitan Area: Considerations of Dynamic Foehn and Foehnlike Wind, *J. Appl. Meteorol. Climatol.*, 50, 1827–1841, <https://doi.org/10.1175/JAMC-D-10-05032.1>, 2011.
- Wang, H., Xue, M., Zhang, X. Y., Liu, H. L., Zhou, C. H., Tan, S. C., Che, H. Z., Chen, B., and Li, T.: Mesoscale modeling study of the interactions between aerosols and PBL meteorology during a haze episode in Jing-Jin-Ji (China) and its nearby surrounding region – Part 1: Aerosol distributions and meteorological features, *Atmos. Chem. Phys.*, 15, 3257–3275, <https://doi.org/10.5194/acp-15-3257-2015>, 2015.
- Wang, Z., Ding, Y., Zhang, Y., Wang, C., Li, J., and Gu, Y.: Feature and Mechanism of the Foehn Weather on East Slope Taihang Mountains?:Statistic Feature, *Plateau Meteorol.*, 31, 547–554, <http://www.gyqx.ac.cn/CN/Y2012/V31/I2/547> (last access: 6 May 2026), 2012.
- Widmer, R.: Statistische Untersuchungen über den Föhn im Reusstal und Versuch einer objektiven Föhnprognose für die Station Altdorf, *Dissertationsdruckerei Leemann*, https://ngzh.ch/wp-content/uploads/2024/08/111_20.pdf (last access: 6 May 2026), 1966.

- Wiesner, L., McGowan, H., Sturman, A., and Dale, T.: Subtropical Foehn Winds, Southeast Queensland, Australia, *J. Geophys. Res.-Atmos.*, 129, e2023JD040410, <https://doi.org/10.1029/2023JD040410>, 2024.
- Xianping, X., Shuyun, W., and Wei, Z.: Analysis of Foehn Characteristics in Middle Section of Taihang Mountains Based on Background Method, *Meteorol. Sci. Technol.*, 48, 433–437, <https://doi.org/10.19517/j.1671-6345.20190281>, 2020.
- Yan, H., Ding, Y., Li, P., Wang, Q., Xu, Y., and Zuo, W.: Mind the class weight bias: Weighted maximum mean discrepancy for unsupervised domain adaptation, *Proc. Cvpr. IEEE*, 2272–2281, <https://doi.org/10.1109/CVPR.2017.107>, 2017.
- Zhang, J., Liu, L., Xu, L., Lin, Q., Zhao, H., Wang, Z., Guo, S., Hu, M., Liu, D., Shi, Z., Huang, D., and Li, W.: Exploring wintertime regional haze in northeast China: role of coal and biomass burning, *Atmos. Chem. Phys.*, 20, 5355–5372, <https://doi.org/10.5194/acp-20-5355-2020>, 2020.
- Zhang, Z., Xu, W., Zeng, S., Liu, Y., Liu, T., Zhang, Y., Du, A., Li, Y., Zhang, N., Wang, J., Aruffo, E., Han, P., Li, J., Wang, Z., and Sun, Y.: Secondary Organic Aerosol Formation from Ambient Air in Summer in Urban Beijing: Contribution of S/IVOCs and Impacts of Heat Waves, *Environ. Sci. Technol. Lett.*, 11, 738–745, <https://doi.org/10.1021/acs.estlett.4c00415>, 2024.
- Zhao, K., Li, N., Li, X., Sun, M., Shi, J., An, D., Pu, J., and Zheng, B.: Characteristic analysis of atmospheric diffusion conditions of winter foehn weather process in Urumqi City, *Arid Land Geogr.*, 44, 1534–1544, <https://doi.org/10.12118/j.issn.1000-6060.2021.06.03>, 2021.
- Zhong, J., Zhang, X., Wang, Y., Wang, J., Shen, X., Zhang, H., Wang, T., Xie, Z., Liu, C., Zhang, H., Zhao, T., Sun, J., Fan, S., Gao, Z., Li, Y., and Wang, L.: The two-way feedback mechanism between unfavorable meteorological conditions and cumulative aerosol pollution in various haze regions of China, *Atmos. Chem. Phys.*, 19, 3287–3306, <https://doi.org/10.5194/acp-19-3287-2019>, 2019.
- Zhou, X., Li, M., Huang, X., Liu, T., Zhang, H., Qi, X., Wang, Z., Qin, Y., Geng, G., Wang, J., Chi, X., and Ding, A.: Urban meteorology–chemistry coupling in compound heat–ozone extremes, *Nat. Cities*, 847–856, <https://doi.org/10.1038/s44284-025-00302-1>, 2025.
- Zumbrunnen, T., Bugmann, H., Conedera, M., and Bürgi, M.: Linking Forest Fire Regimes and Climate-A Historical Analysis in a Dry Inner Alpine Valley, *Ecosystems*, 12, 73–86, <https://doi.org/10.1007/s10021-008-9207-3>, 2009.