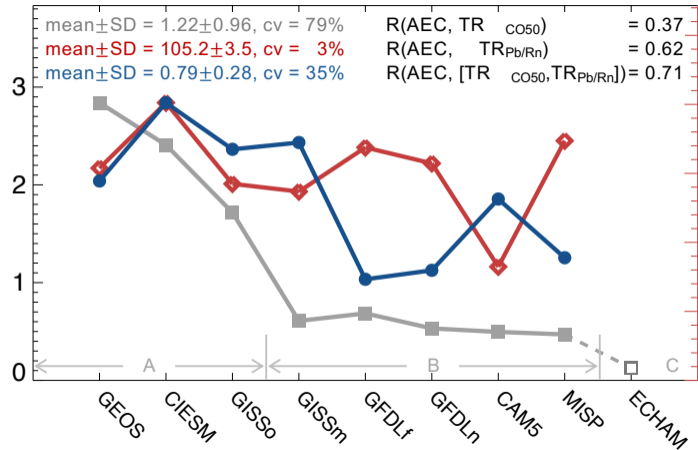


AEC 550nm (10^3 km^{-1})



Model abbreviation:

- GEOS = GEOS-i33p2
- CIESM = CIESM-MAM7
- GISSo = GISS-OMA
- GISSm = GISS-MATRIX
- GFDLf = GFDL-fSST
- GFDLn = GFDL-nSST
- CAM5 = CAM5-ATRAS
- MISP = MIROC-SPRINTARS
- ECHAM = ECHAM6-HAMMOZ