



Corrigendum to
“Microphysical properties of various precipitation
systems worldwide classified via objective
methods based on dual-frequency
precipitation radar observations” published in Atmos.
Chem. Phys., 26, 4727–4747, 2026

Yujia Zhang^{1,2}, Xiaodong Zhang^{1,2}, and Xiang Ni^{1,2}

¹Chongqing Jinpo Mountain Karst Ecosystem National Observation and Research Station,
School of Geographical Sciences, Southwest University, Chongqing, China

²Chongqing Engineering Research Center for Remote Sensing Big Data Application,
School of Geographical Sciences, Southwest University, Chongqing, China

Correspondence: Xiang Ni (nixiang@swu.edu.cn)

Published: 22 May 2026

In the version uploaded on 3 March 2026, which was accepted by the editor on 12 March 2026, Figs. 4–6 appeared in portrait orientation in the manuscript, with correct values and truncated lines. During the file upload process (production process) on 15 March 2026, incorrect versions of the figures were mistakenly uploaded in landscape orientation, containing incorrect values and untrimmed lines. The reason is that we overlooked the issue during the production process.

For convenience and consistency with the published version, these figures have been redrawn in landscape orientation using the corrected values and truncated lines, which are consistent with the accepted version in format.

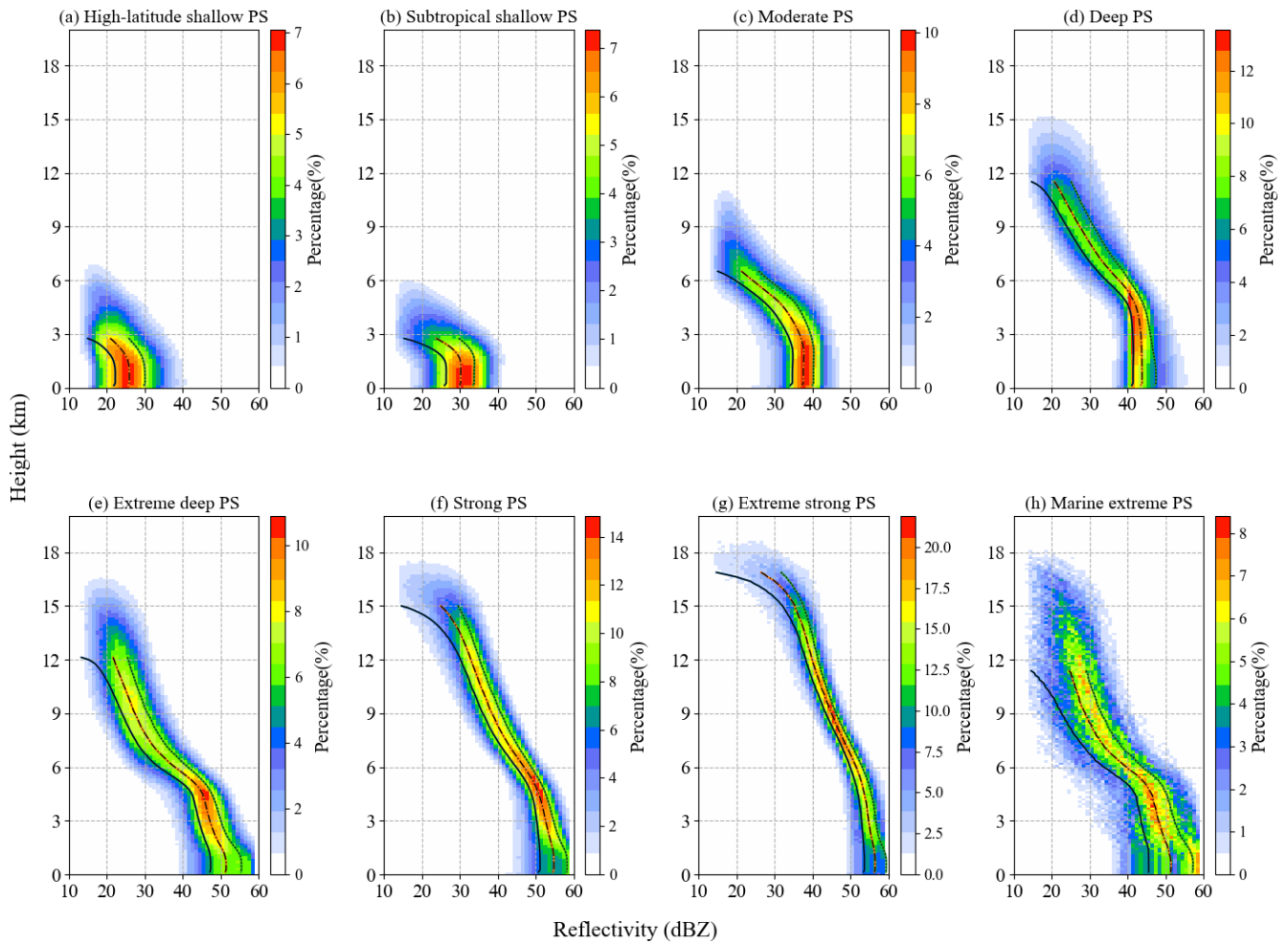


Figure 4. Contoured frequency by altitude diagrams (CFADs) of the maximum radar reflectivity for the eight distinct PS clusters. The solid lines indicate the 25th percentiles; the dashed-dotted lines indicate the 50th percentiles; the dotted lines indicate the 75th percentiles.

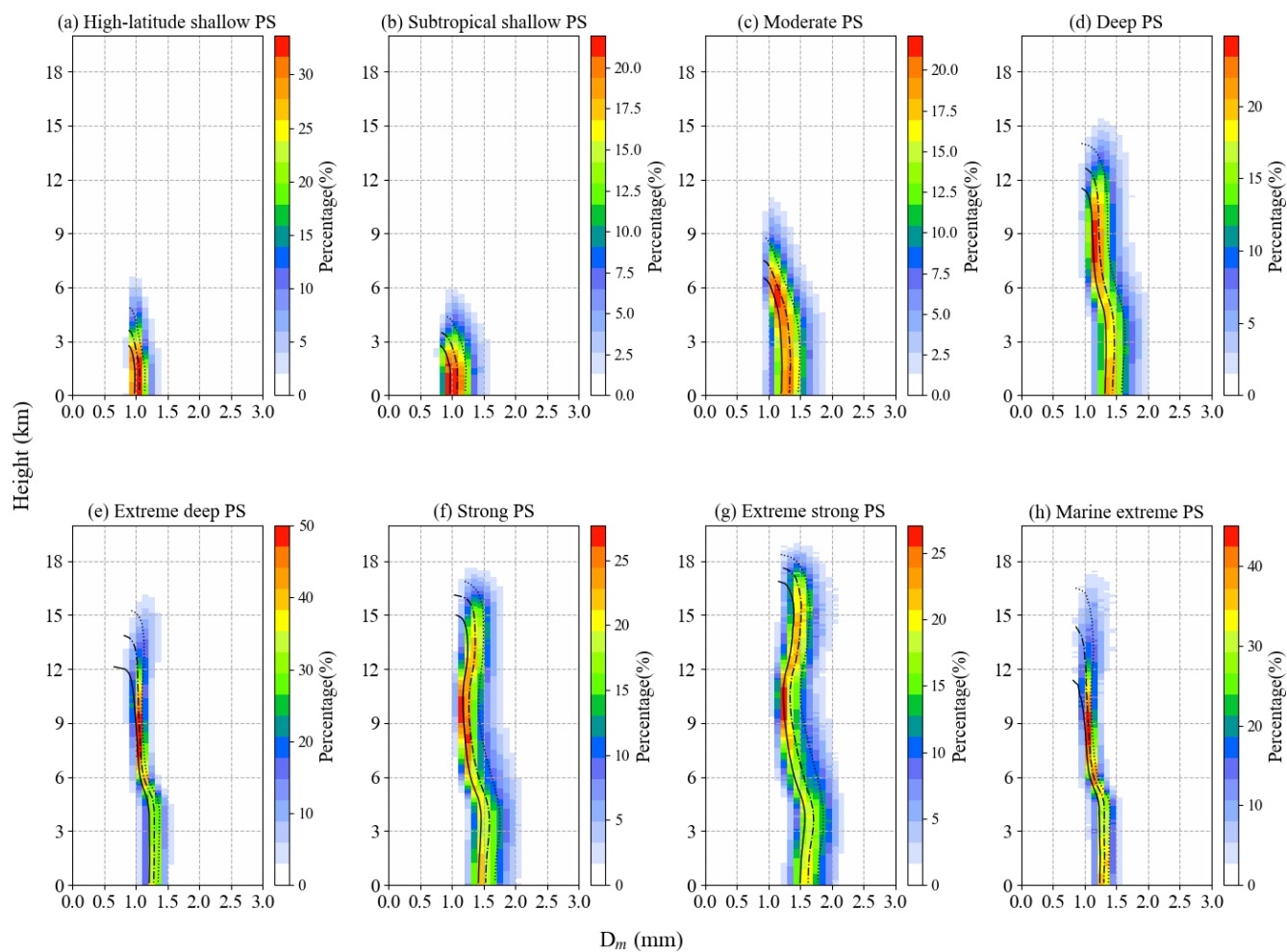


Figure 5. Similar to Fig. 4, but for D_m .

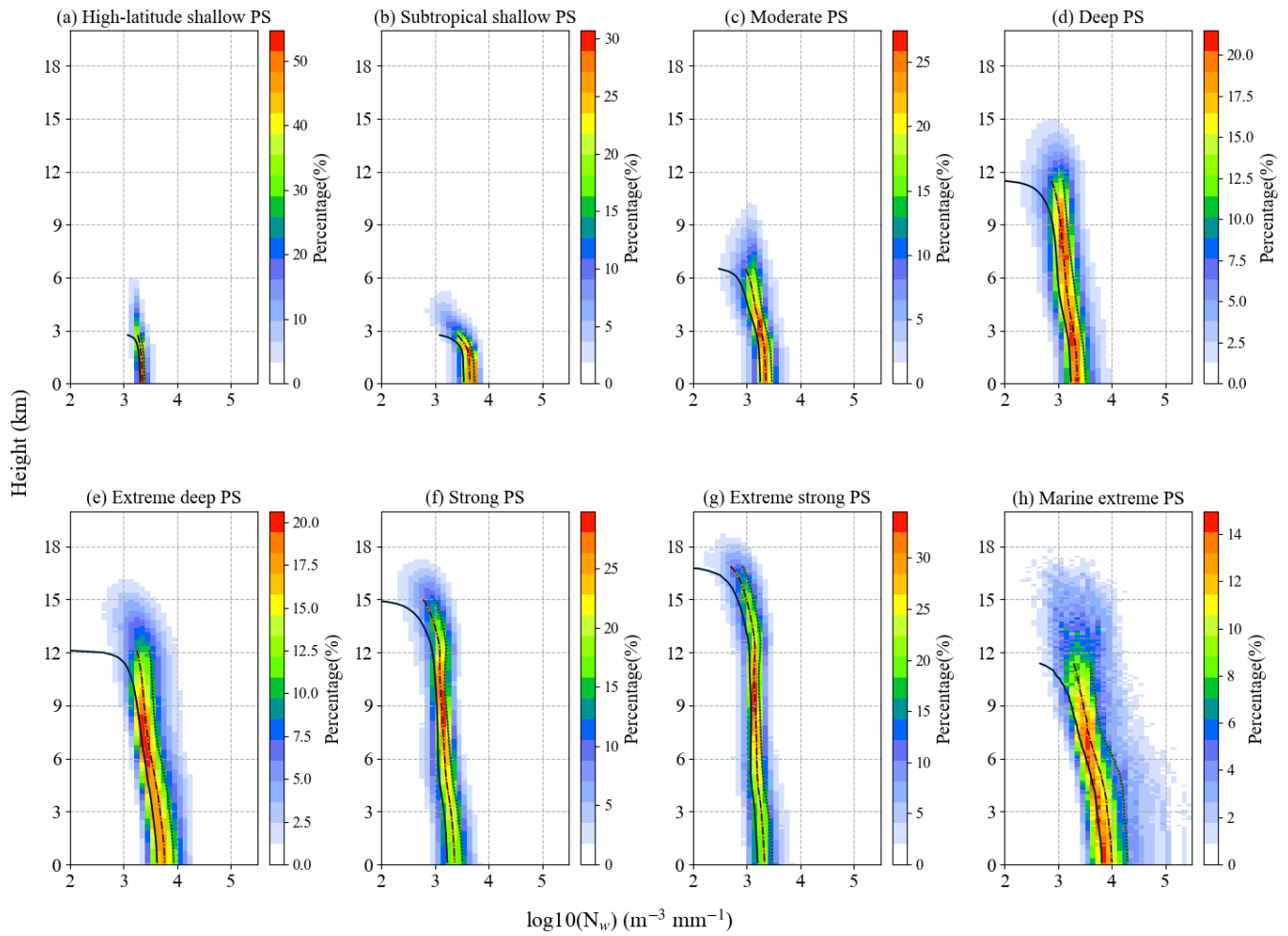


Figure 6. Similar to Fig. 4, but for $\log_{10}(N_w)$.

In the version submitted on 28 May 2025, the correct figure was used. During the file upload process (review process) on 7 July 2025, an incorrect version of the figure was uploaded. The reason is that the authorship changed after June 2025. We made a mistake and did not notice that in the review process. The manuscript itself was prepared based on the correct version upload on 28 May 2025.

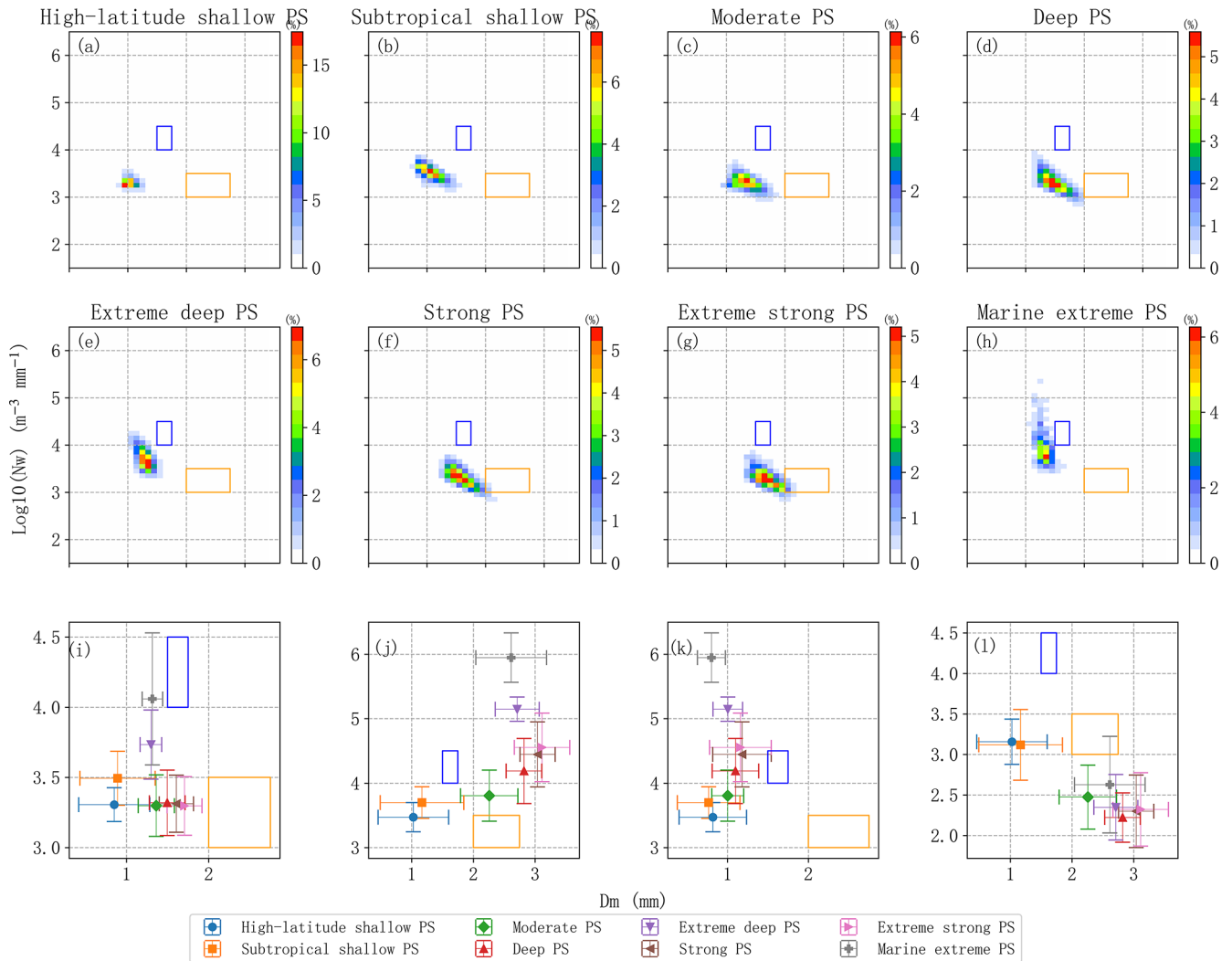


Figure 7. (a–h) Two-dimensional frequency distributions of D_m and $\log_{10}(N_w)$ at a height of 2.5 km, and (i–l) statistical values of $\log_{10}(N_w)$ and D_m for each PS (the bar indicates one standard deviation). (i) Mean values of D_m and $\log_{10}(N_w)$, (j) MAX- D_m and MAX- $\log_{10}(N_w)$, (k) MAX- $\log_{10}(N_w)$ and D_m at its corresponding position, and (l) MAX- D_m and $\log_{10}(N_w)$ at its corresponding position for each PS. The blue and orange rectangles denote the maritime and continental convective clusters, respectively, in D_m and $\log_{10}(N_w)$ space from Bringi et al. (2003).