



Supplement of

Characterizing lead-rich particles in Beijing's atmosphere following coal-to-gas conversion: insights from single-particle aerosol mass spectrometry

Xiufeng Lian et al.

Correspondence to: Mei Li (limei@jnu.edu.cn)

The copyright of individual parts of the supplement might differ from the article licence.

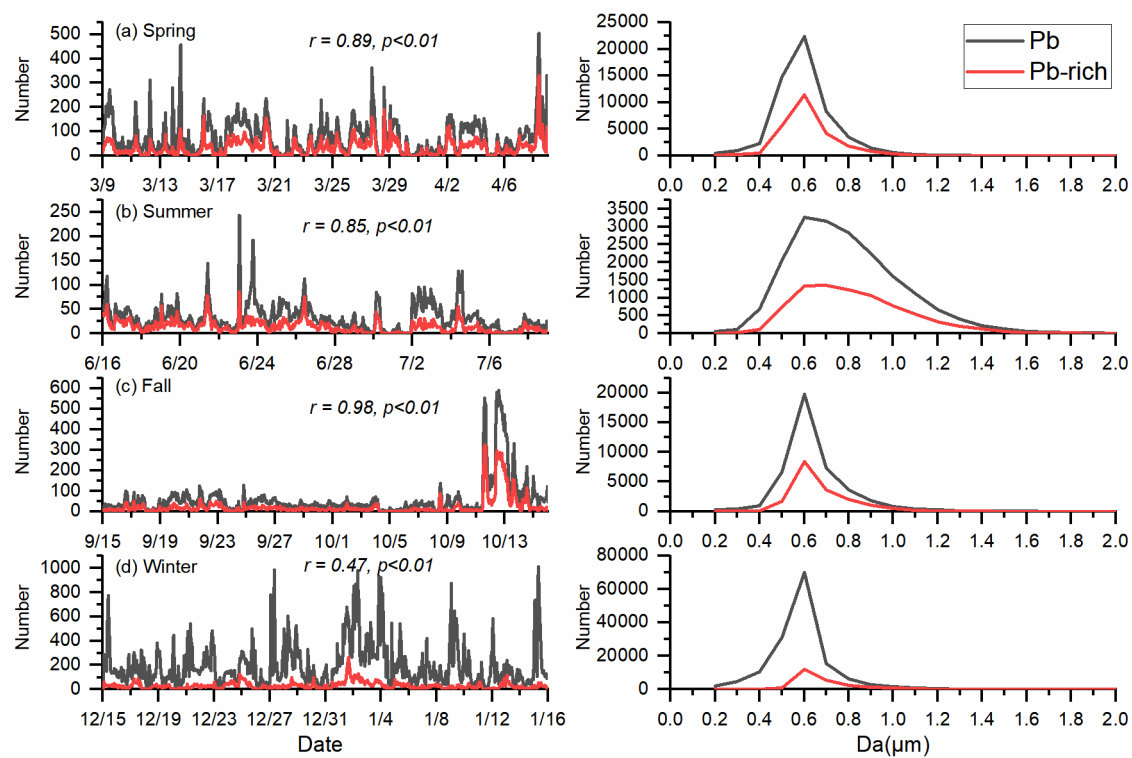


Figure S1. Time series and size distribution of Pb-containing particles and Pb-rich particles

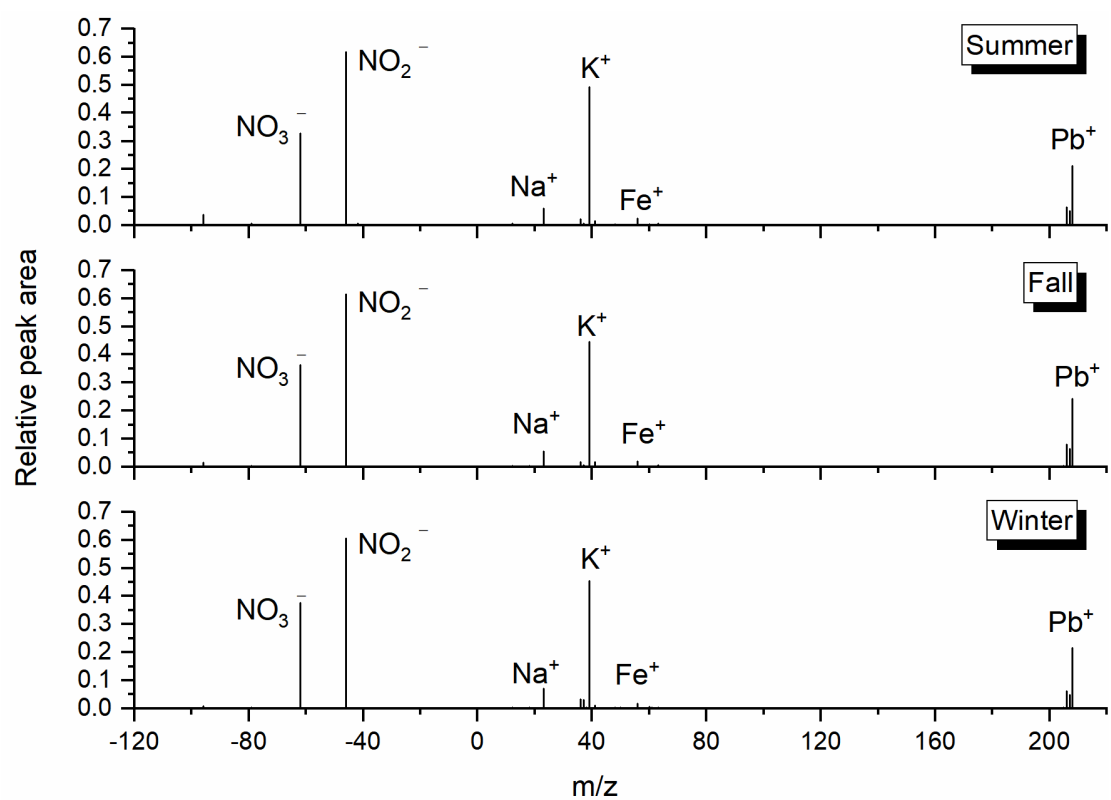


Figure S2. The average mass spectrum of Pb-N particles from summer to winter in 2019.

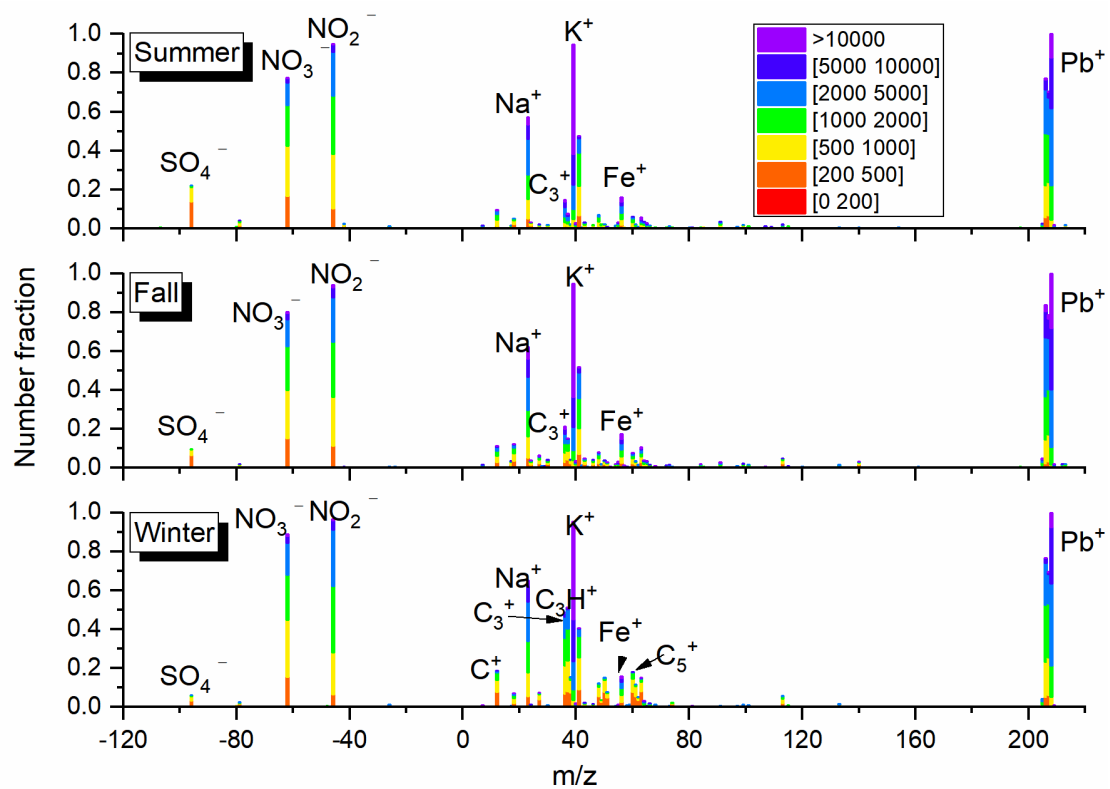


Figure S3. The digital spectrum of Pb-N particles from summer to winter in 2019.

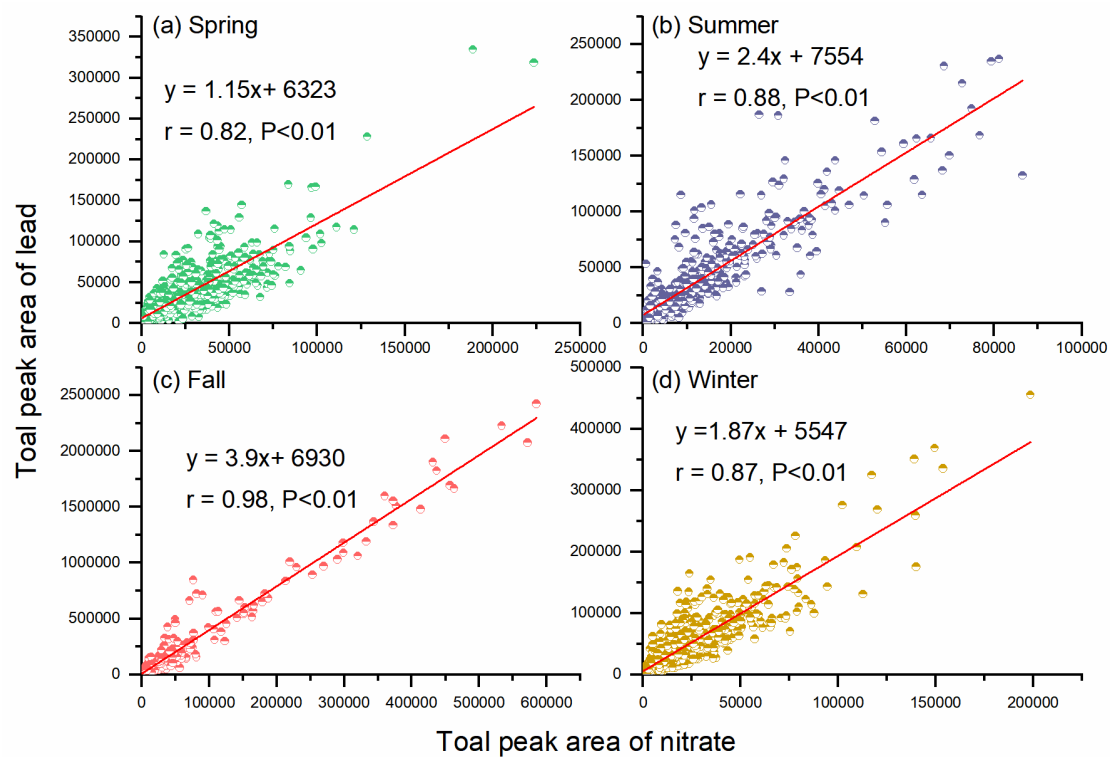


Figure S4. Correlation between the total peak area of nitrate (sum peak area of m/z -46 and -62) and the
total peak area of lead (sum peak area of m/z 206, 207, and 208) in Pb-N particles.

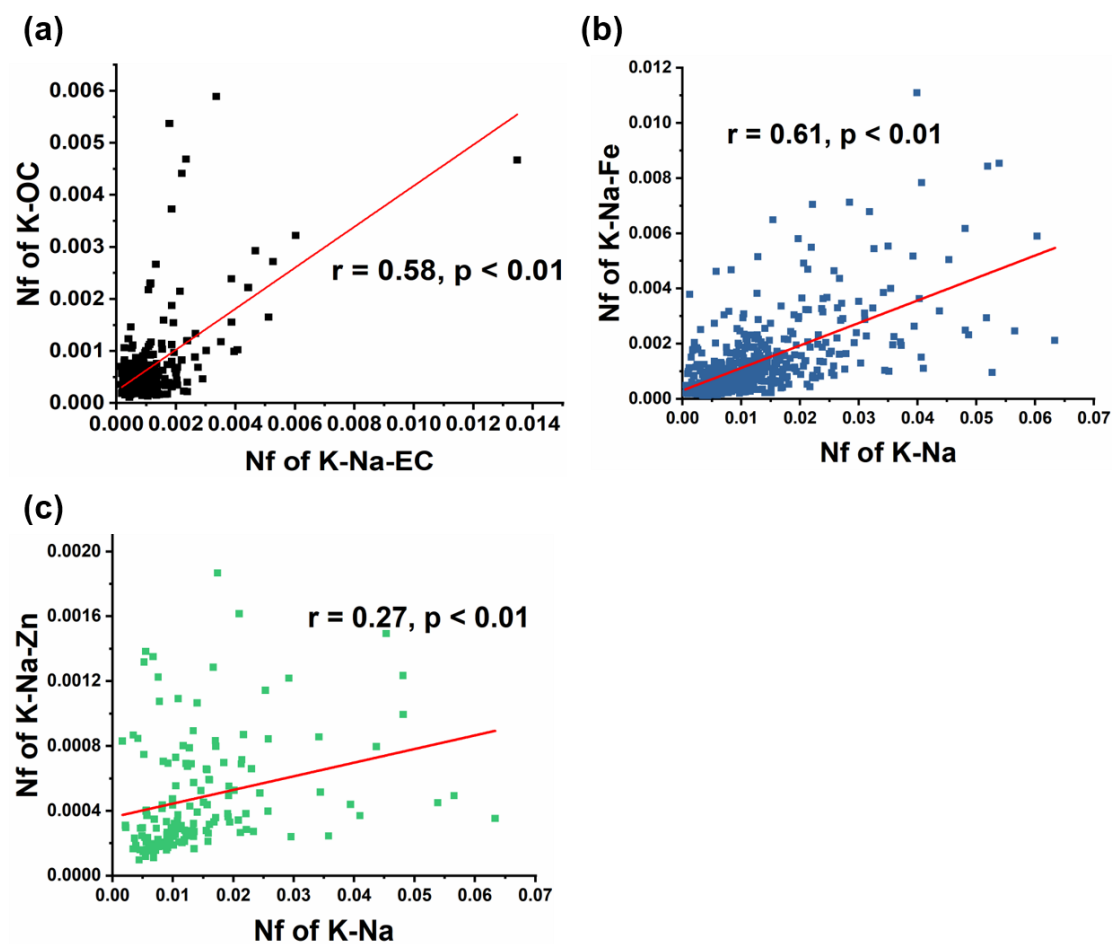
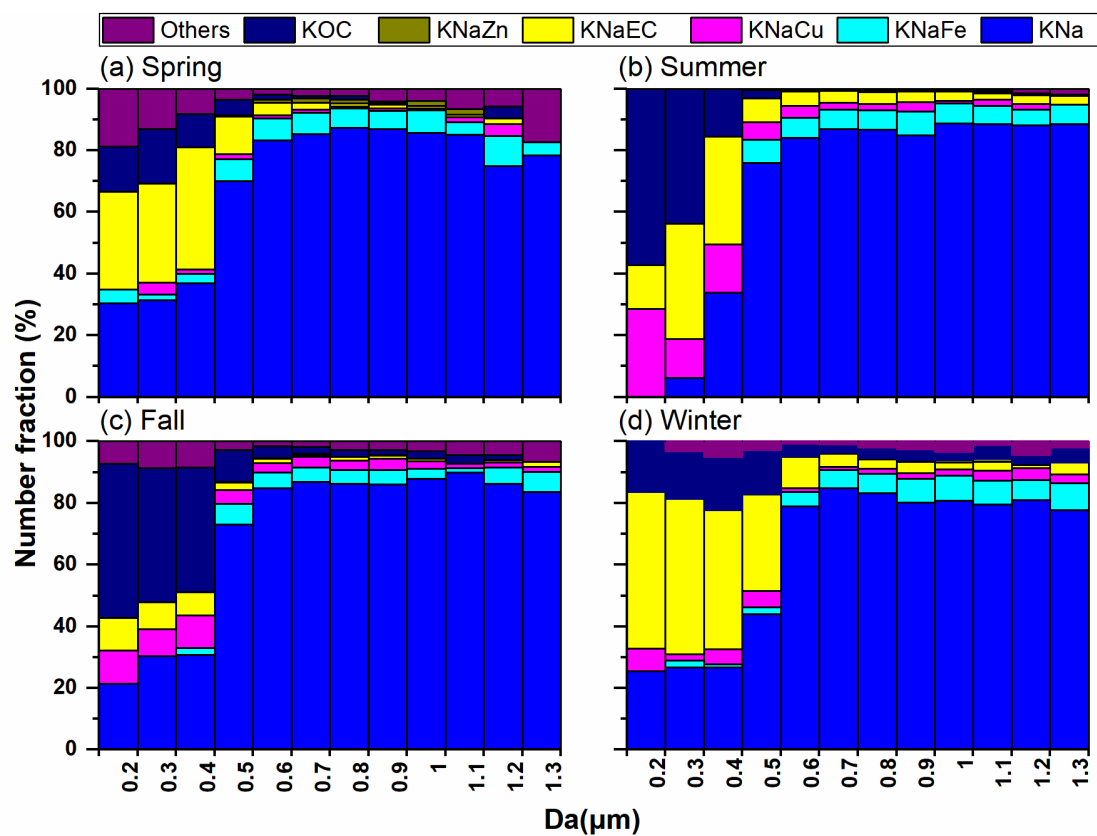
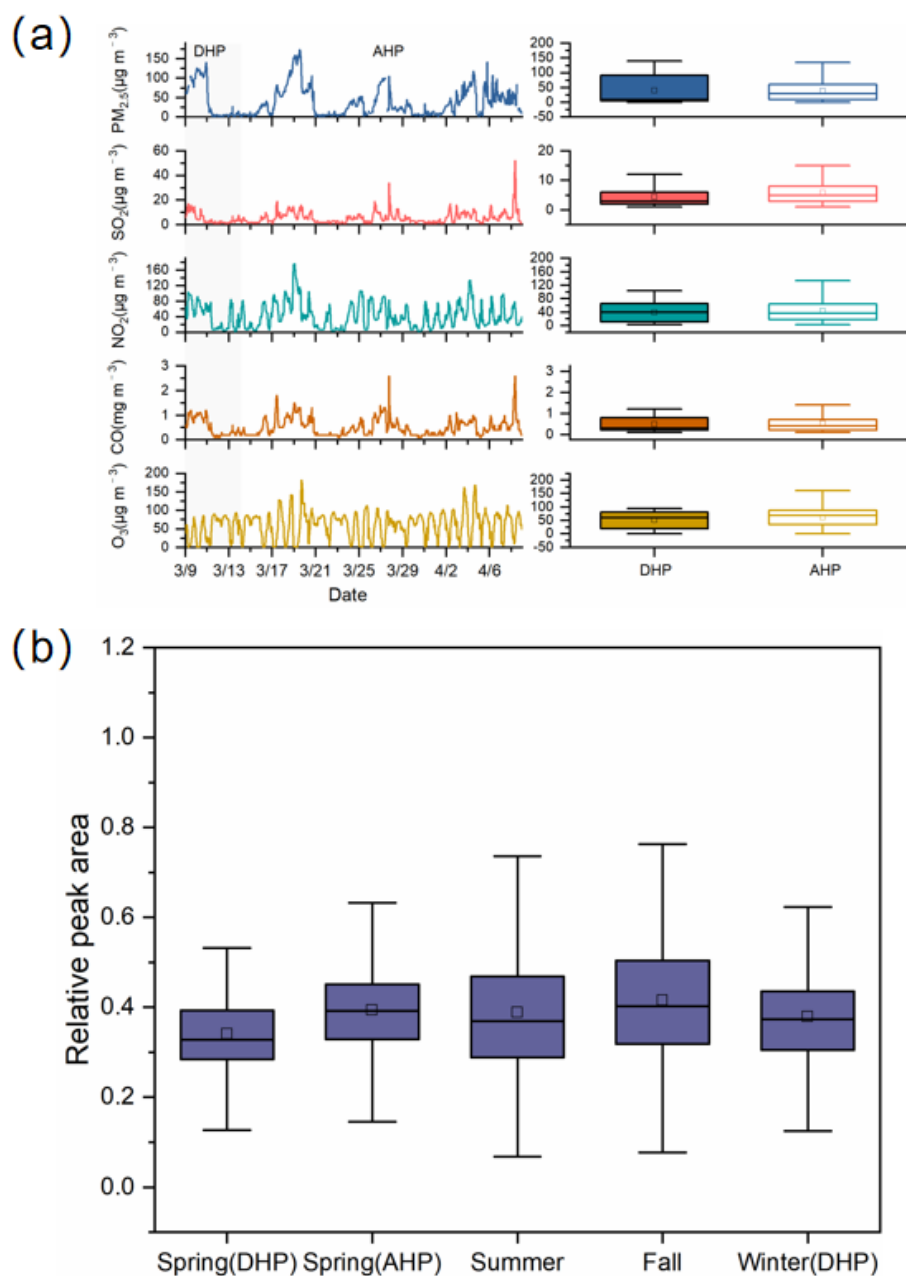


Figure S5. Correlation between the number fractions of K-Na-EC and KOC particles (a), K-Na and K-Na-Fe particles (b), K-Na and K-Na-Zn particles (c).

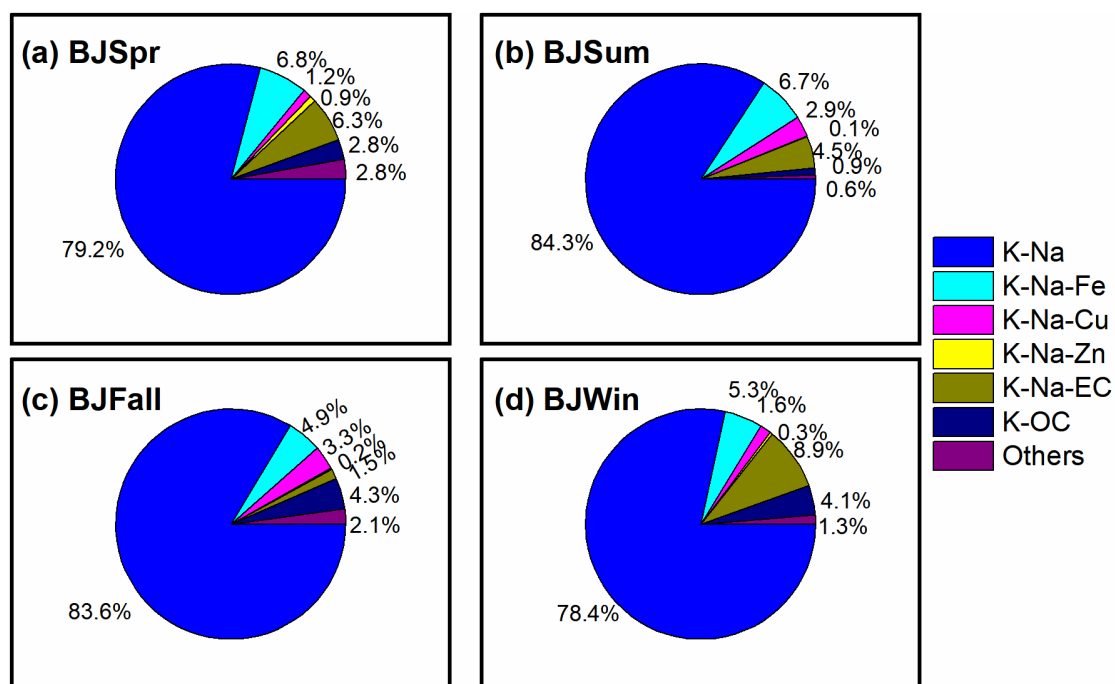


40

Figure S6. Number fractions for size distribution of the main Pb-rich particle types classified based on positive spectrum from spring to winter, respectively.



45 **Figure S7. (a) Time series of pollutant concentrations ($\text{PM}_{2.5}$, NO_2 , SO_2 , CO , and O_3) and box plots of pollutant concentrations during heating (DHP) and non-heating (AHP) periods during spring; (b) The relative peak area of Pb in Pb-rich particles during four seasons.**



50 Figure S8. The number fractions of the main Pb-rich particle types from spring to winter in 2019.

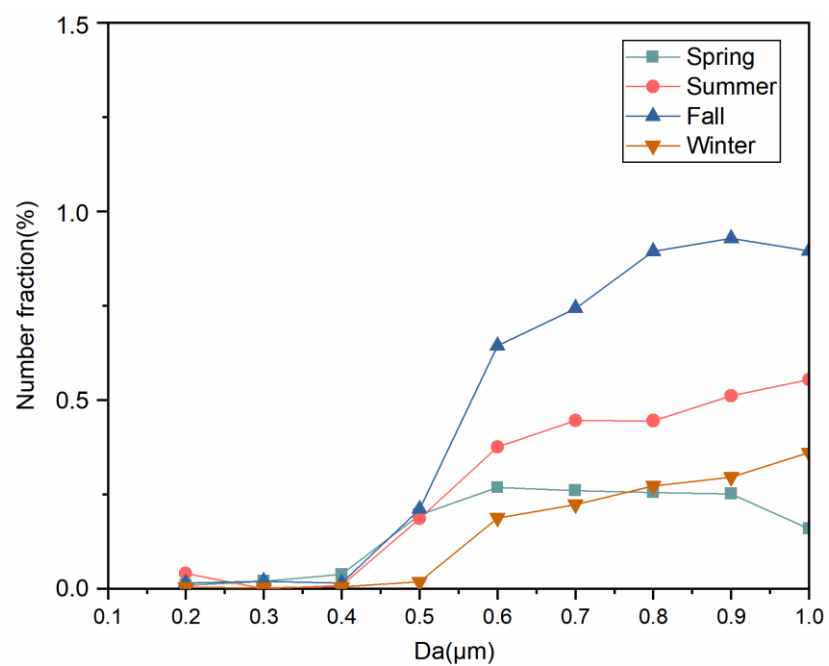


Figure S9. Number fractions for size distribution of Pb-N particles from spring to winter, respectively.

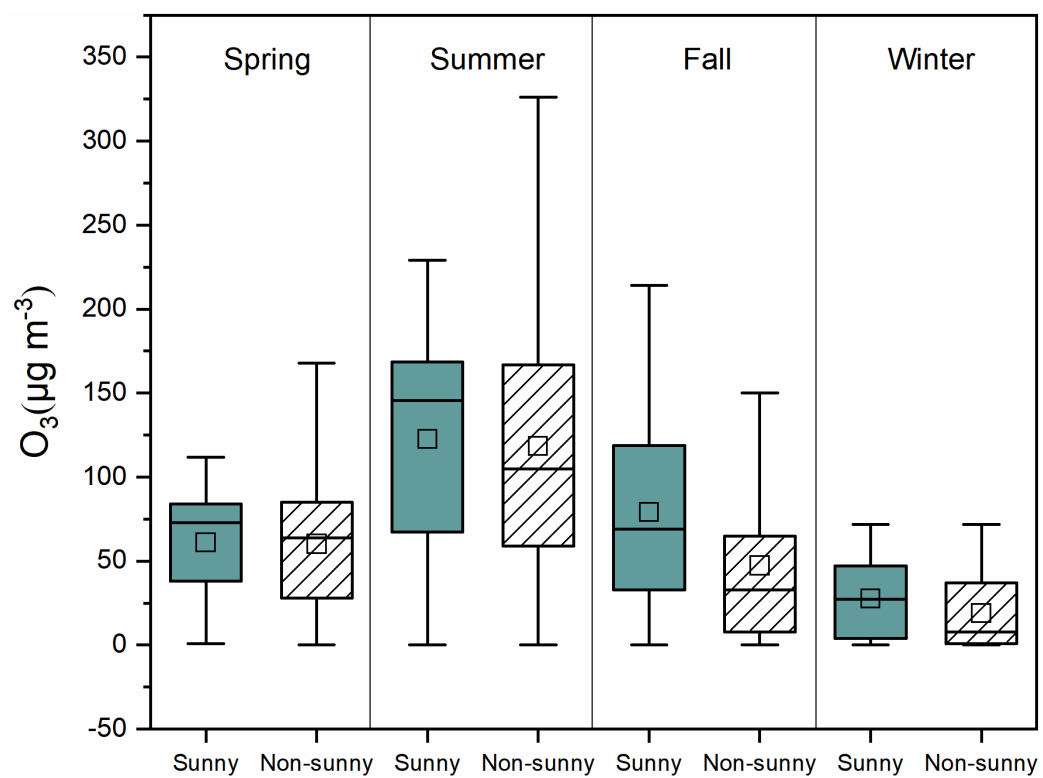


Figure S10. The ozone concentration on sunny and non-sunny days during four seasons.

Table S1 Average value and standard deviation of meteorological parameters and the concentration of pollutants during sampling periods.

Site	Date	SO ₂	NO ₂	O ₃	PM _{2.5}	T	RH	WS
		(μg/m ³)				(°C)	(%)	(m/s)
	9 Mar-8 Apr 2019	6 ± 5	45 ± 32	62 ± 37	41 ± 37	12 ± 5	29 ± 14	2 ± 2
	16 Jun-17 Jul 2019	4 ± 3	32 ± 19	119 ± 75	33 ± 21	27 ± 5	56 ± 19	2 ± 1
	15 Sep-16 Oct 2019	4 ± 4	41 ± 22	59 ± 56	35 ± 26	19 ± 6	61 ± 21	1 ± 1
	15 Dec 2019-15 Jan 2020	6 ± 5	49 ± 30	24 ± 23	36 ± 32	-1 ± 3	49 ± 20	2 ± 1