



Supplement of

Preindustrial-to-present-day changes in atmospheric carbon monoxide: agreement and gaps between ice archives and global model reconstructions

Xavier Faïn et al.

Correspondence to: Xavier Faïn (xavier.fain@univ-grenoble-alpes.fr)

The copyright of individual parts of the supplement might differ from the article licence.

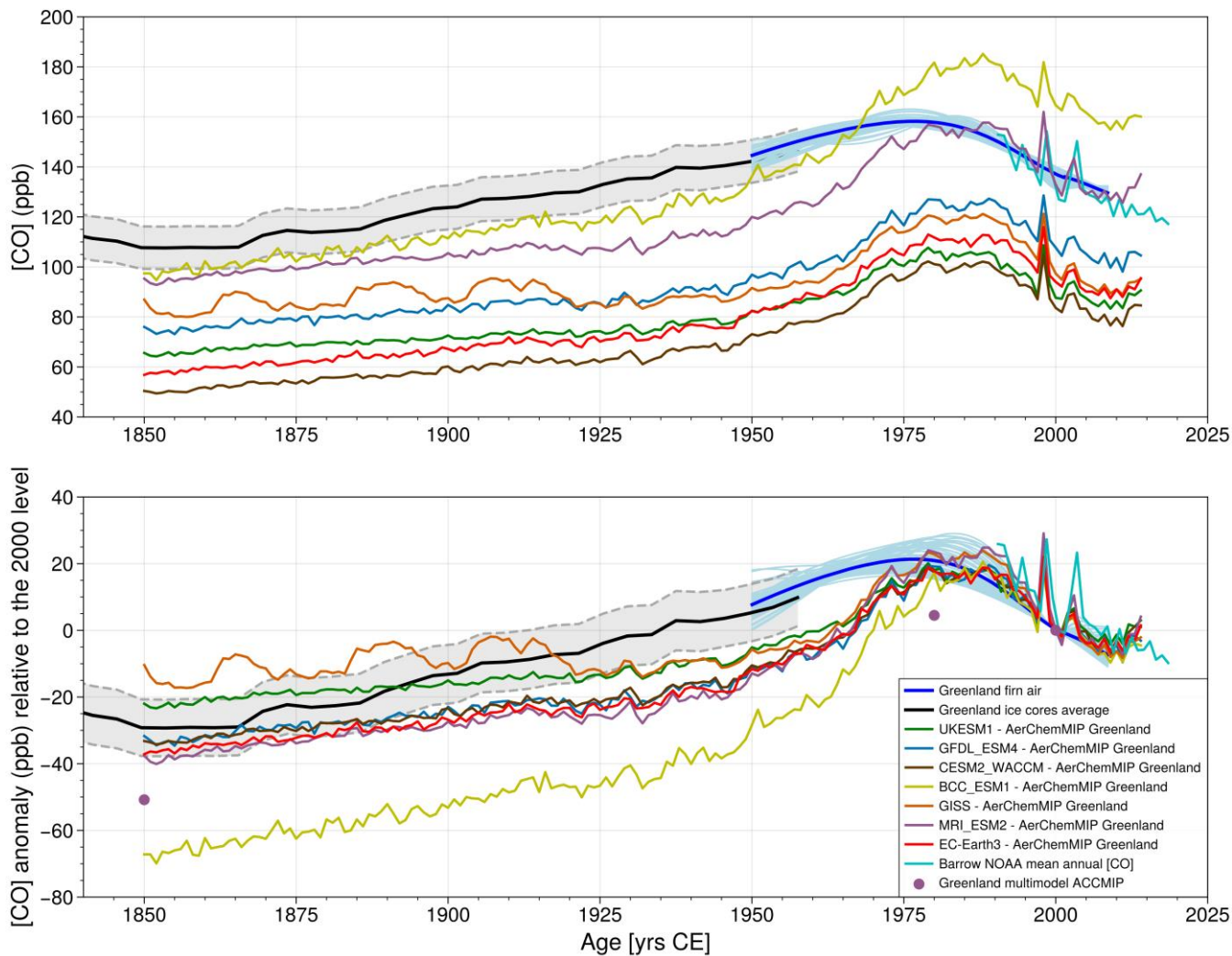


Figure S1. Individual AerChemMIP and ACCMIP model outputs included in this study for the Greenland area. Absolute values (upper panel) and anomalies relative to the 2000 CE levels (lower panel).

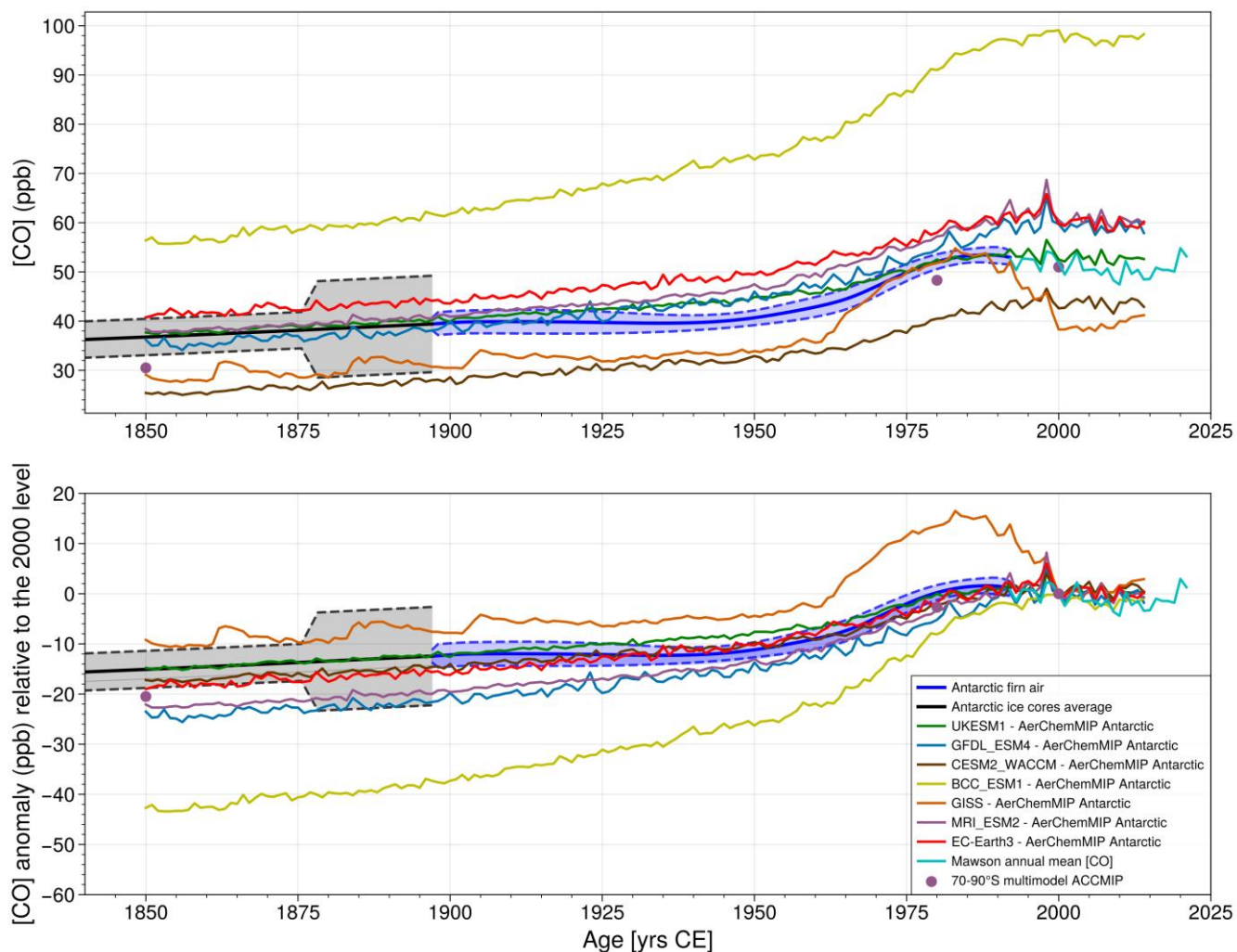


Figure S2. Individual AerChemMIP and ACCMIP model outputs included in this study for the Antarctica area. Absolute values (upper panel) and anomalies relative to the 2000 CE levels (lower panel).