



Supplement of

Measurement report: Impact of emission control measures on environmental persistent free radicals and reactive oxygen species – a short-term case study in Beijing

Yuanyuan Qin et al.

Correspondence to: Yang Zhang (zhangyang@ucas.ac.cn) and Jihua Tan (tanjh@ucas.ac.cn)

The copyright of individual parts of the supplement might differ from the article licence.

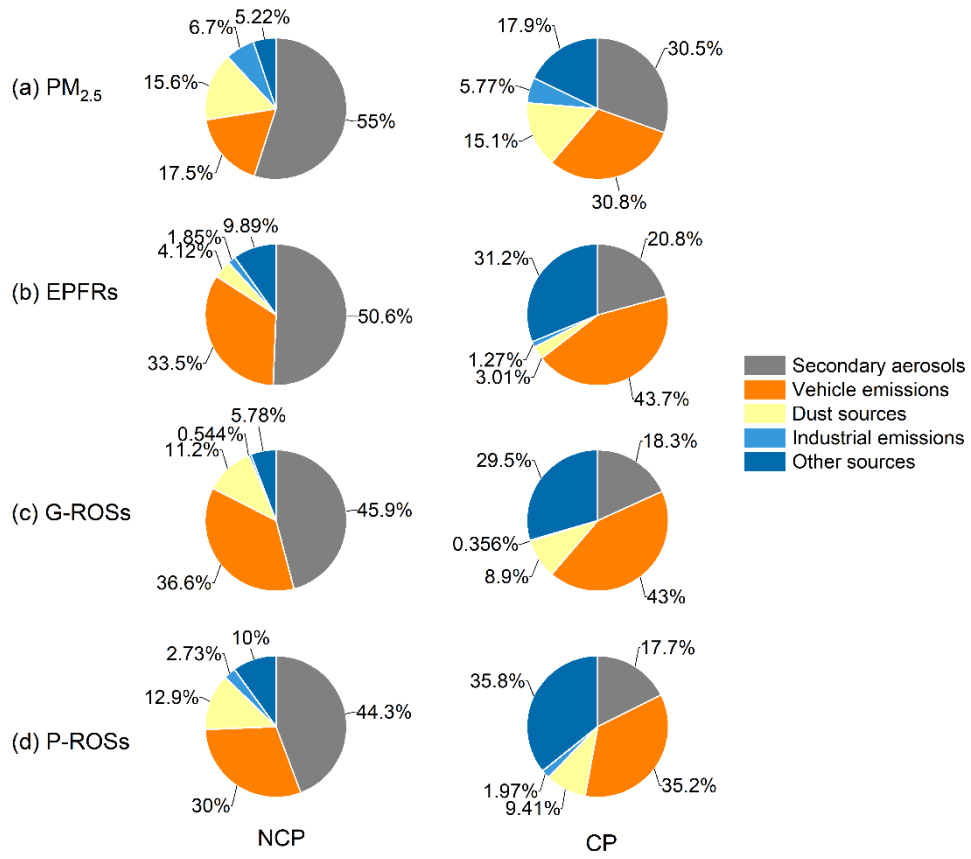


Figure S1: The contributions of different sources to (a) PM_{2.5}, (b) EPFRs, (c) G-ROSSs, and (d) P-ROSSs during NCP and CP.

30

35

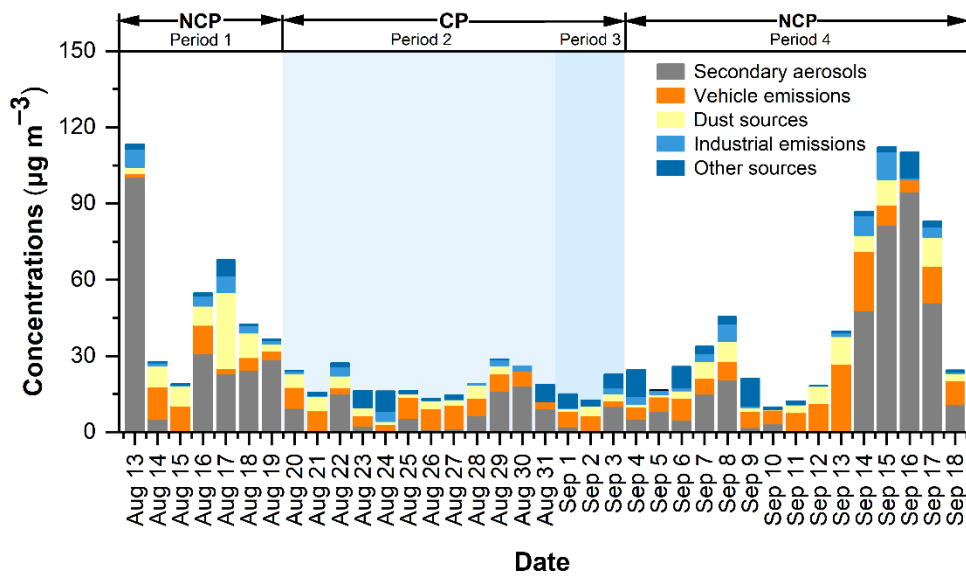


Figure S2: Time series of the source contributions to PM_{2.5}.

40

45

50

55

Table S1: Sampling schedule.

Sampling time	Period	Number of samples (n)
2015.8.13–8.19	Period 1	14
2015.8.20–8.31	Period 2	24
2015.9.1–9.3	Period 3	6
2015.9.4–9.19	Period 4	32

60

65

70

75

80

85

Table S2: Descriptions of control measures implemented in different periods. “√” denotes the control.

Control measures		Period 1	Period 2	Period 3	Period 4
Long-term routine measures		√	√	√	√
	Odd-and-even plate rule for vehicle use		√	√	
	Polluting industry restriction		√	√	
	Construction sites shutdown		√	√	
Short-term routing measures	Delay of school opening		√	√	
	Vacation days off			√	
	More frequent road sprinkling		√	√	
	Road traffic control around Tiananmen Square			√	
	Museum and tourist attraction closeds			√	
	Enhanced measures in surrounding cities			√	