



*Supplement of*

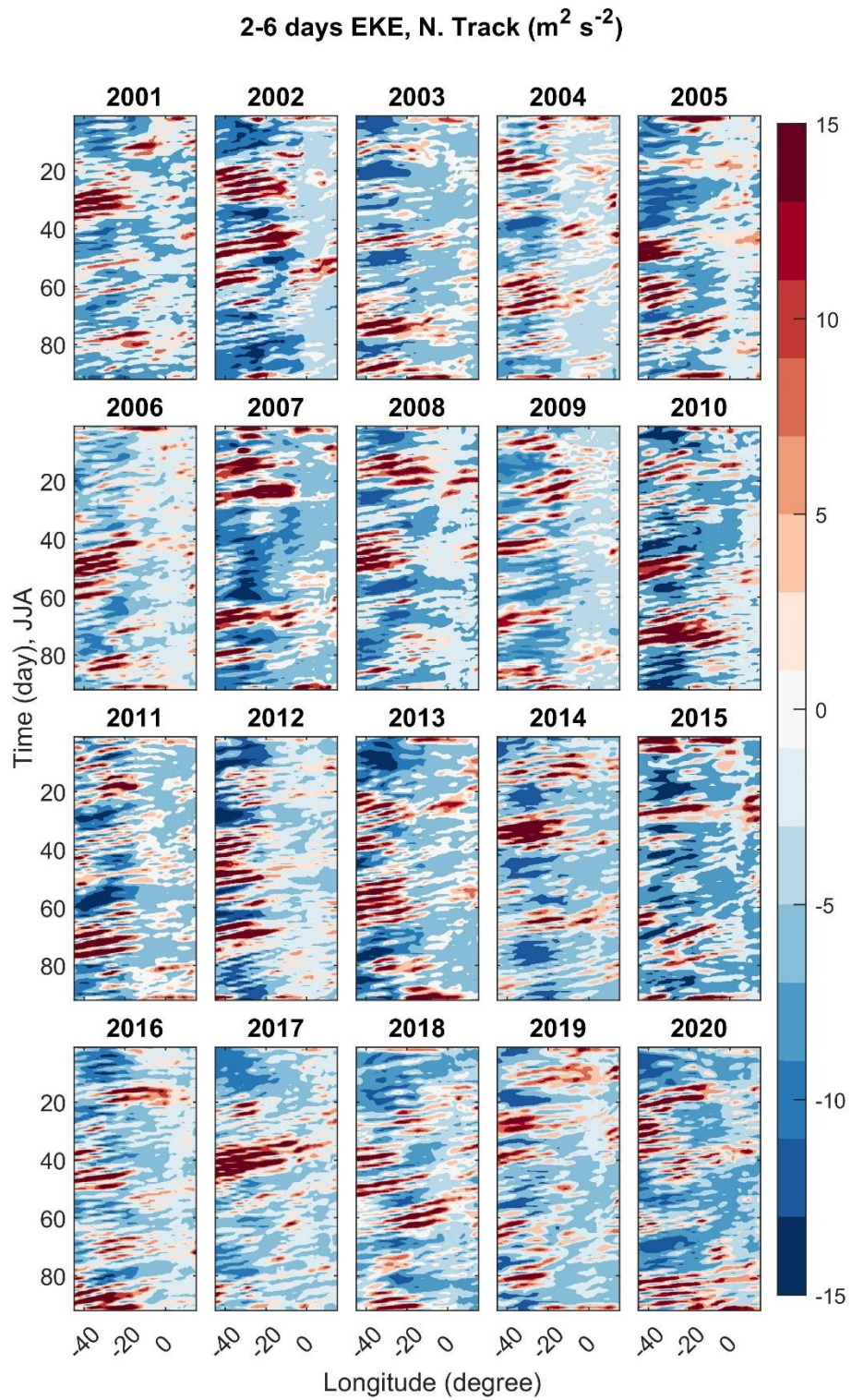
## **A new look into the impacts of dust radiative effects on the energetics of tropical easterly waves**

**Farnaz Hosseinpour and Eric M. Wilcox**

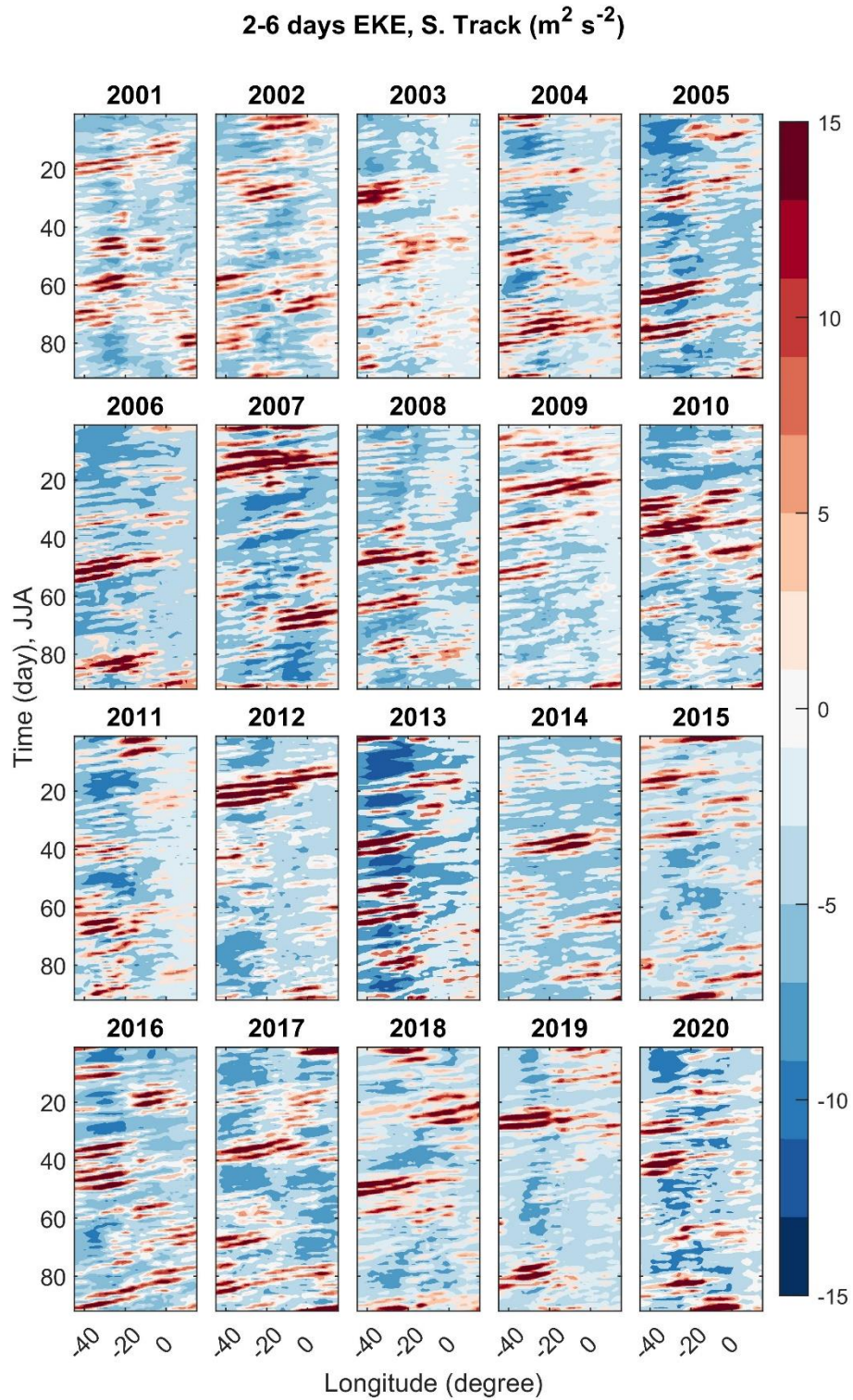
*Correspondence to:* Farnaz Hosseinpour (farnaz.hosseinpour@dri.edu)

The copyright of individual parts of the supplement might differ from the article licence.

## Supplementary

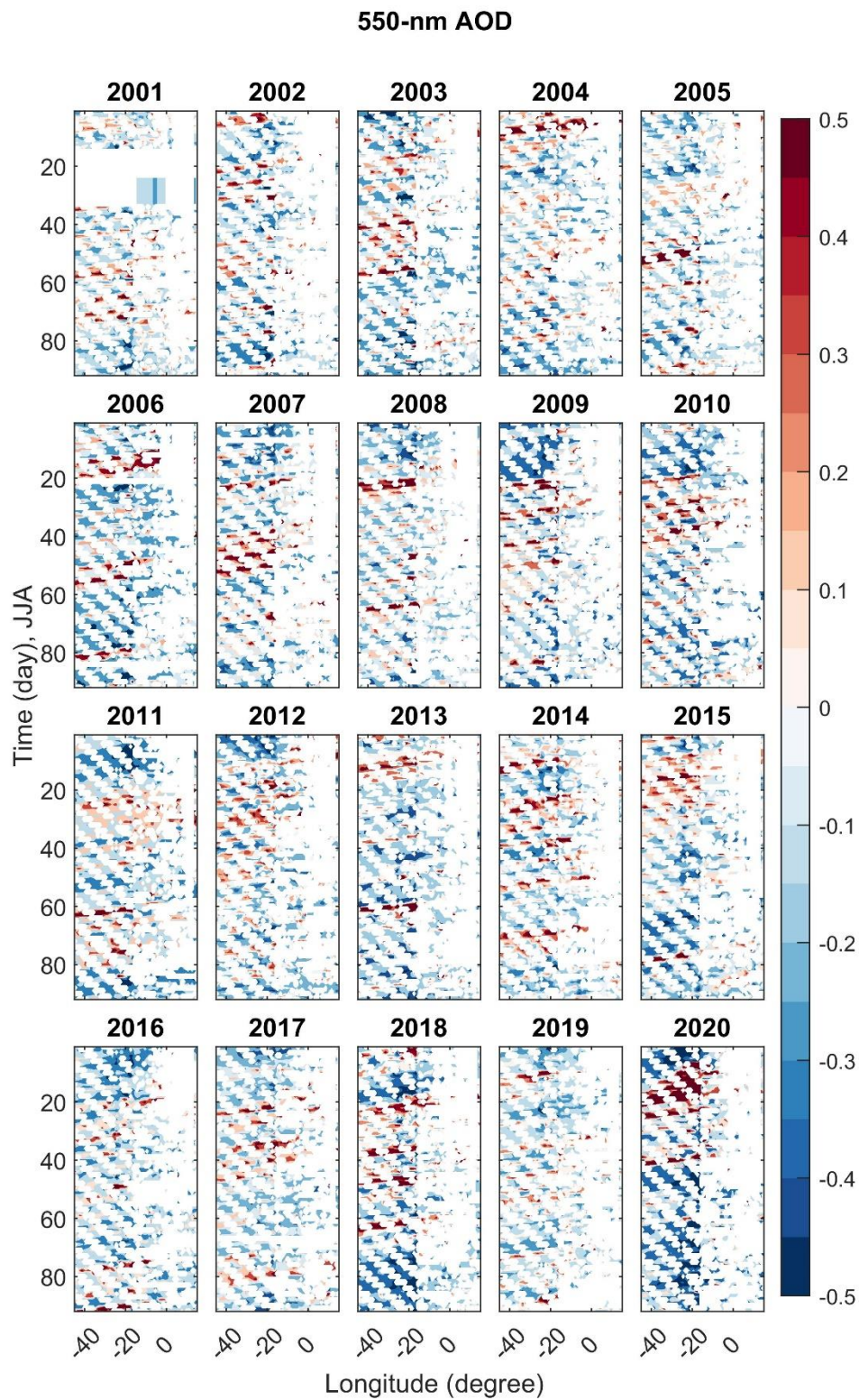


**Figure S1** Same as Figure 3 but for the northern track EKE, meridionally averaged over  $18^\circ$  to  $24^\circ\text{N}$ .

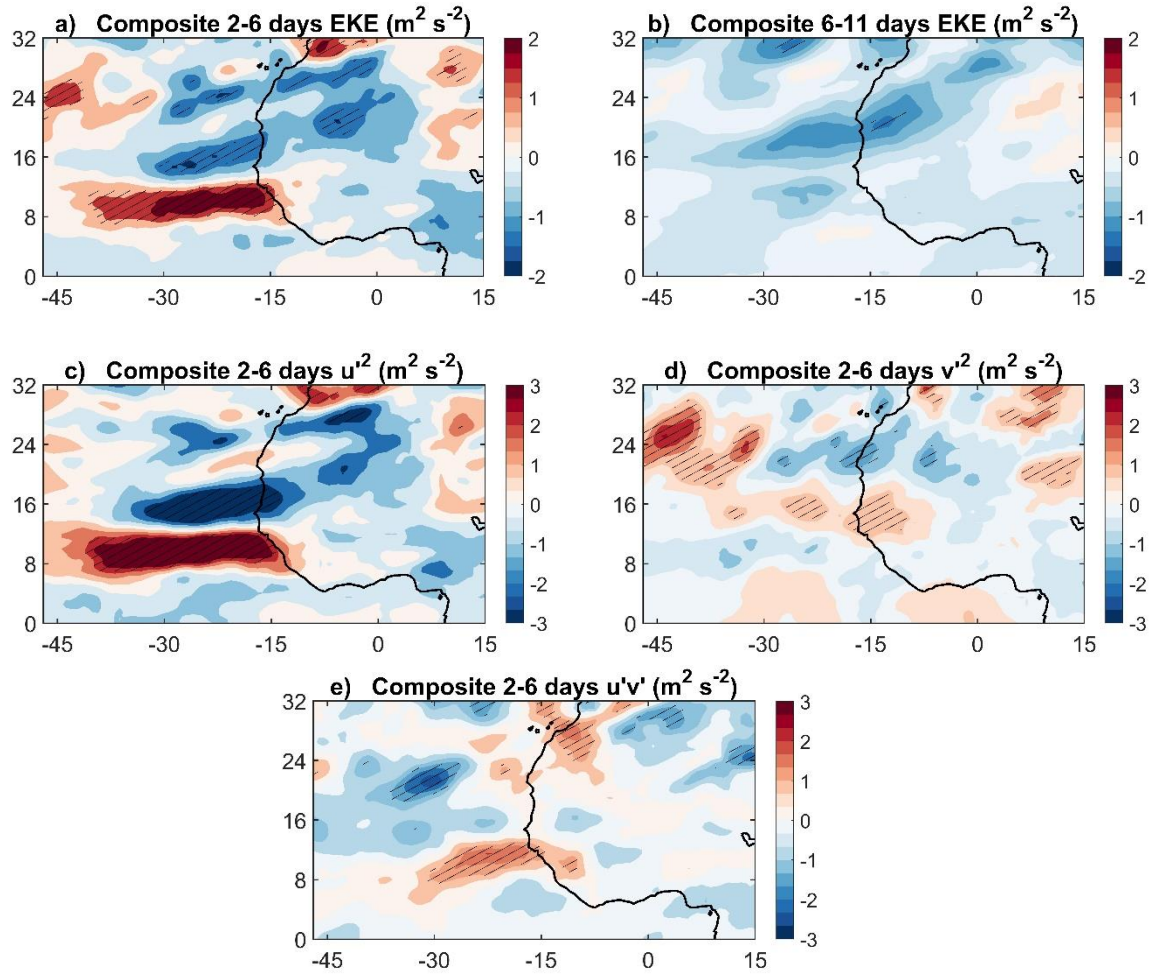


**Figure S2** Same as Figure 3 but for the southern track EKE, meridionally averaged over  $6^\circ$  to  $12^\circ\text{N}$ .

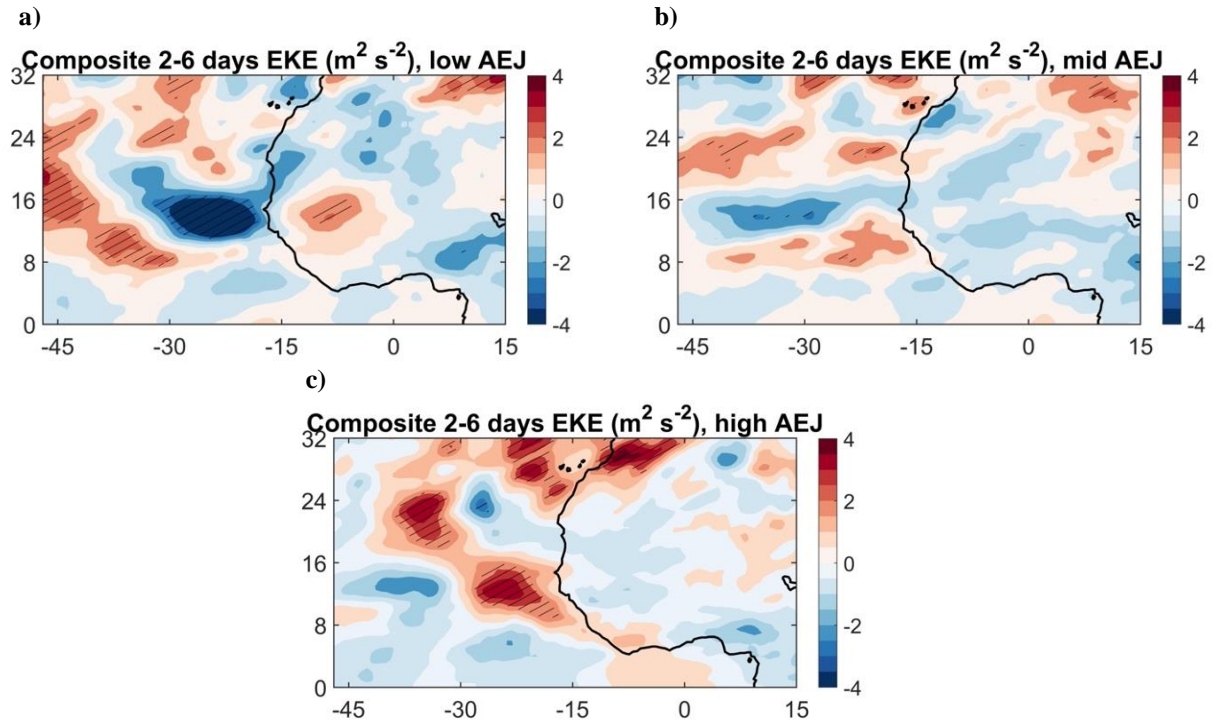




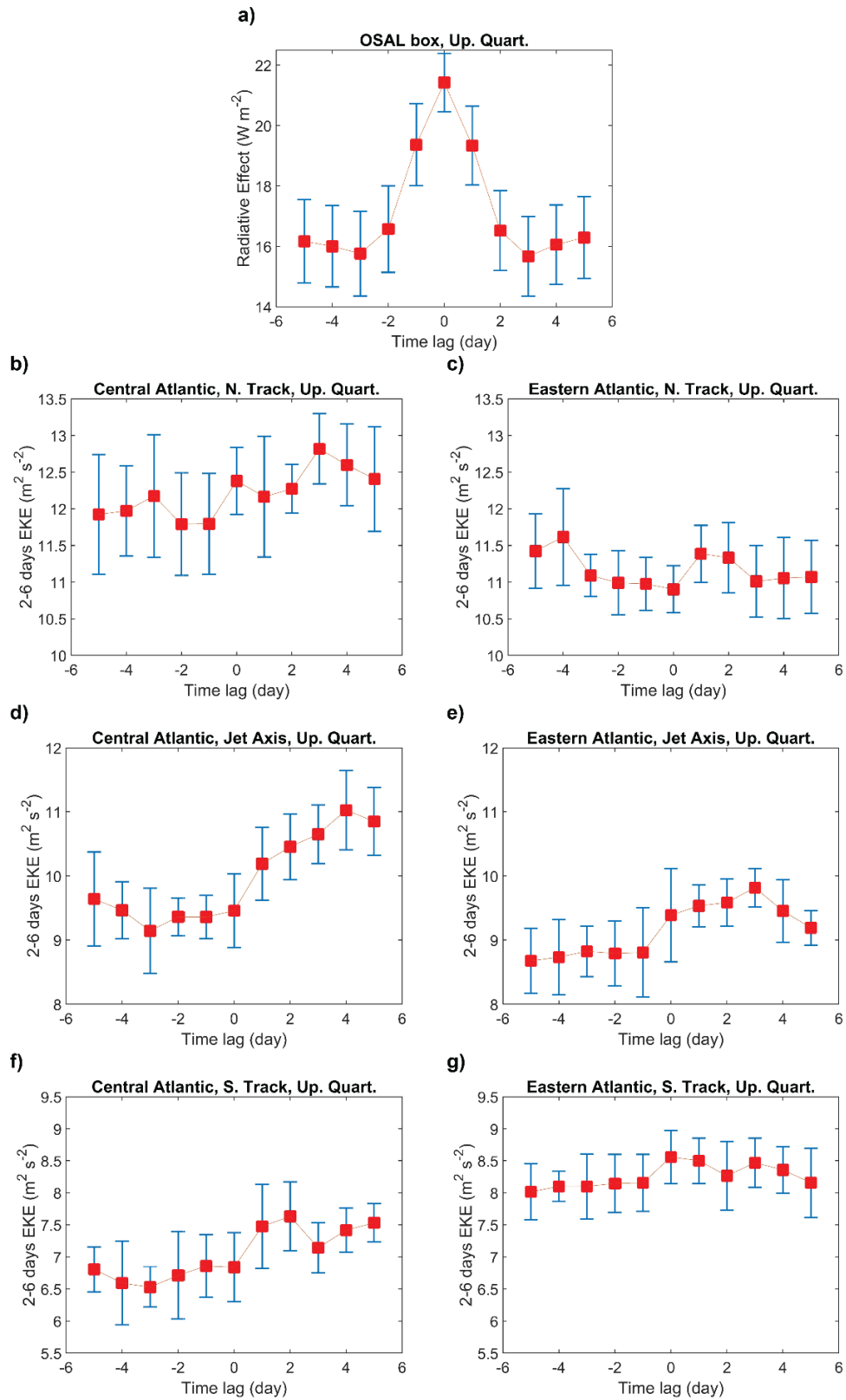
**Figure S3** Same as Figure 3 but for MODIS AOD.



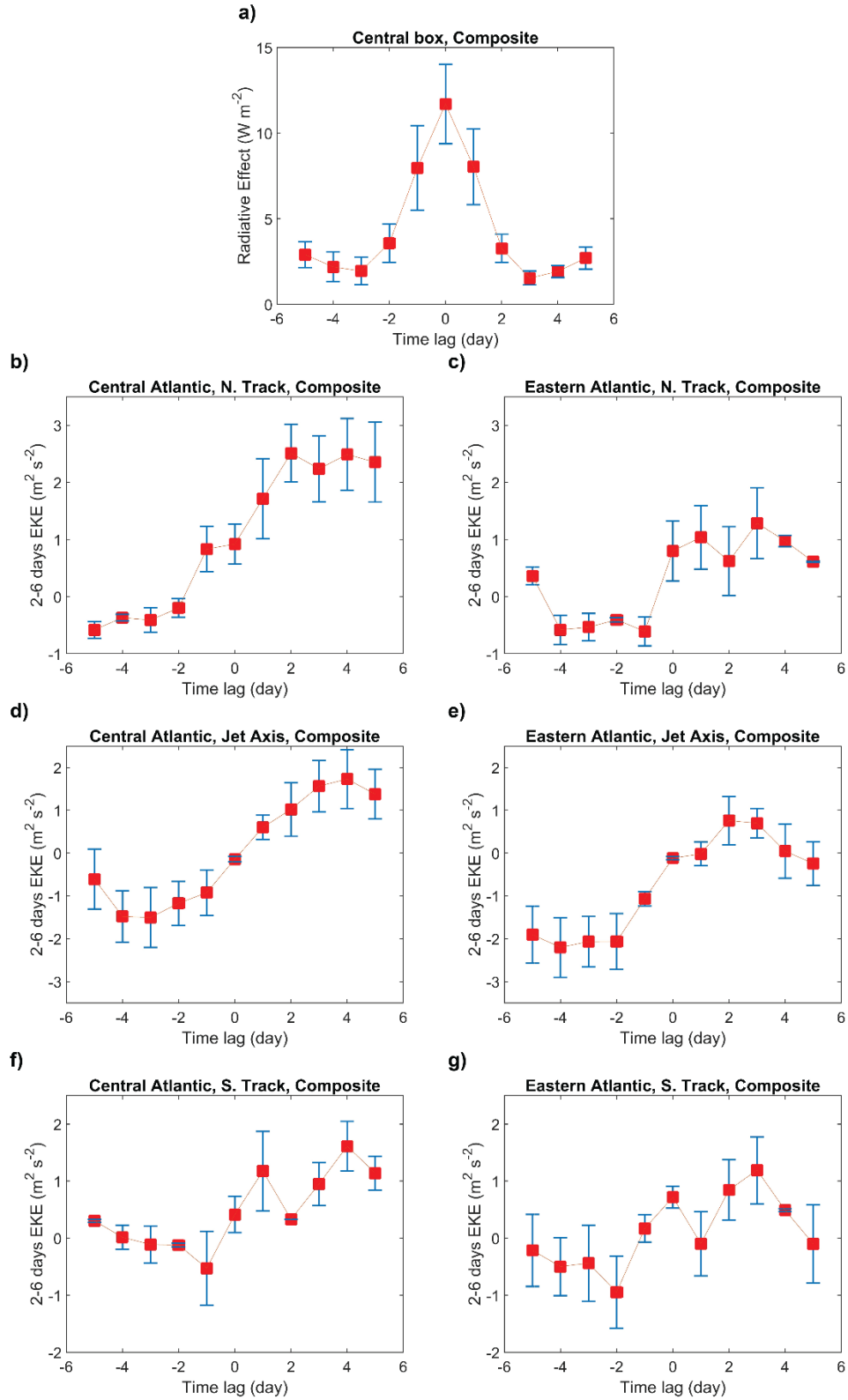
**Figure S4** Same as Figure 4 but MODIS AOD is used over the OSAL domain.



**Figure S5** Same as Figure 4a but for three separate terciles of the mean speed of the AEJ. (a) All samples coincided with the lowest tercile of AEJ speed. (b) and (c) are the same for the middle and highest terciles of AEJ speed respectively.



**Figure S6** Same as Figure 5, but for the time series of the upper quartile aerosol radiative effect.



**Figure S7** Same as Figure 5, but the dust domain in SAL is selected further downstream over  $12^{\circ}$  to  $22^{\circ}N$  and  $-38^{\circ}$  to  $-28^{\circ}E$ .