



Supplement of

Efficient droplet activation of ambient black carbon particles in a suburban environment

Ping Tian et al.

Correspondence to: Dantong Liu (dantongliu@zju.edu.cn)

The copyright of individual parts of the supplement might differ from the article licence.

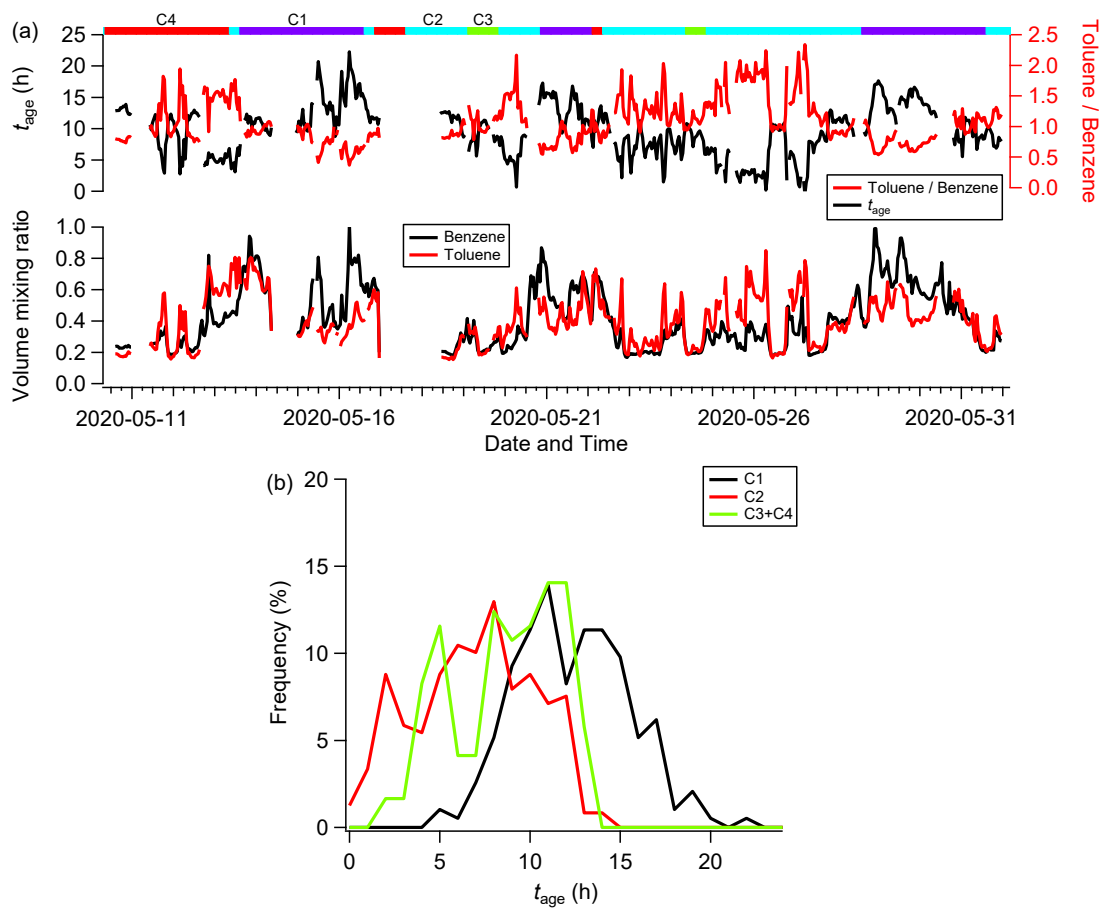


Figure S1. Time series of Benzene and Toluene mass concentrations, the ratio of Toluene and Benzene, and t_{age} (a). Frequency analysis of t_{age} at three different clusters (b).

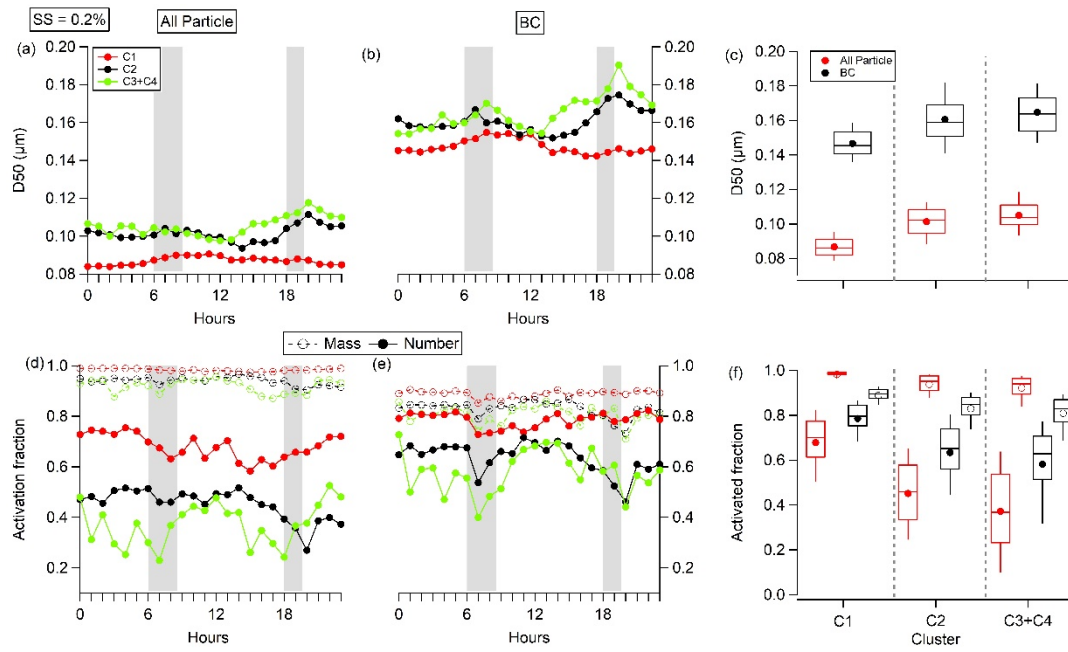


Figure S2. Under $SS=0.2\%$, a) and b) four clusters diurnal variations of activation diameter (D_{50}), d), e) mass and number activation fraction (F_{act}) for all particle and BCc, respectively. c) D_{50} and f) F_{act} , distributions of all-particles and BCc for four clusters, with solid circle indicating the average; in each box, the solid line and top and bottom boundaries represent the median, 75th and 25th, respectively.

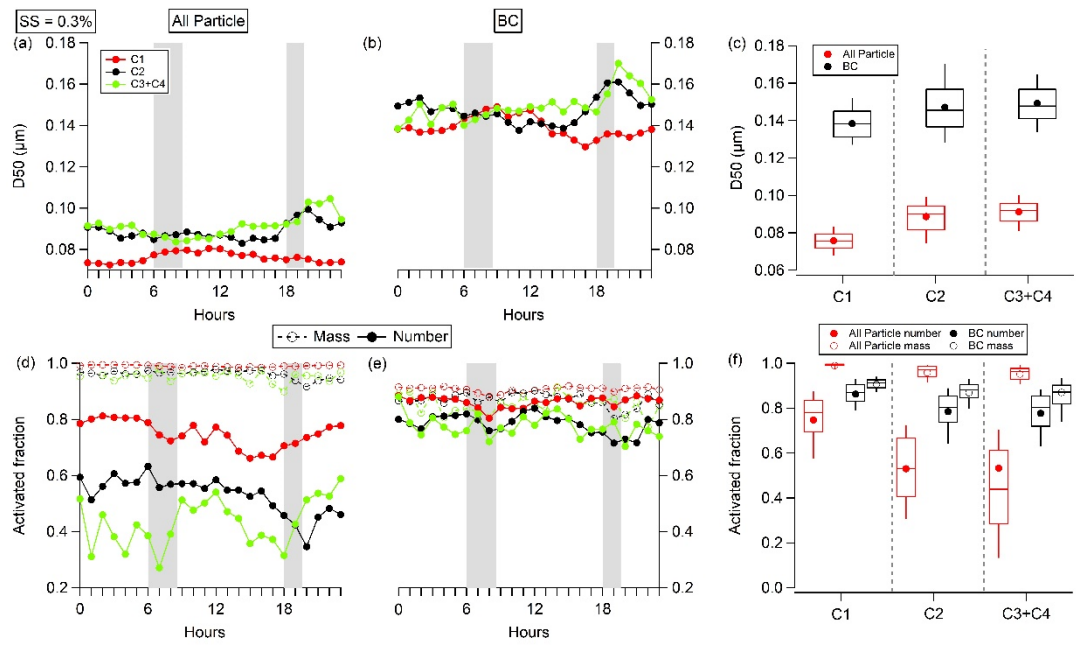


Figure S3. Identical plots with Fig. S2 but for $SS=0.3\%$.

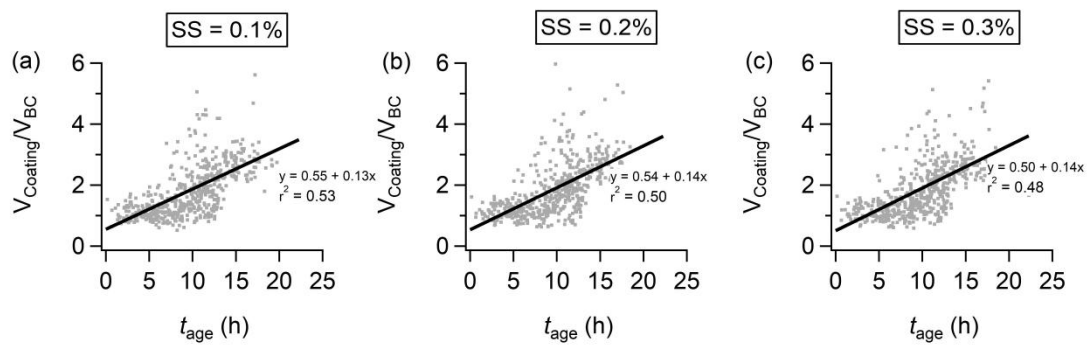


Figure S4. The evolution of volume ratios of coating over rBC with photochemical age (t_{age}) under SS at 0.1%, 0.2%, c) 0.3%.