



Estimation of the atmospheric hydroxyl radical oxidative capacity using multiple hydrofluorocarbons (HFCs)

Rona L. Thompson¹, Stephen A. Montzka², Martin K. Vollmer³, Jgor Arduini⁴, Molly Crotwell^{5,2}, Paul B. Krummel⁶, Chris Lunder¹, Jens Mühle⁷, Simon O'Doherty⁸, Ronald G. Prinn⁹, Stefan Reimann³, Isaac Vimont², Hsiang Wang¹⁰, Ray F. Weiss⁷, and Dickon Young⁸

¹Climate and Environmental Research Institute NILU, 2007 Kjeller, Norway

²Global Monitoring Laboratory, NOAA, Boulder, CO 80305, USA

³Laboratory for Air Pollution and Environmental Technology, Empa, Swiss Federal Laboratories for Materials Science and Technology, 8600 Dübendorf, Switzerland

⁴Department of Pure and Applied Sciences, University of Urbino, Urbino, 61029, Italy

⁵Cooperative Institute for Research in Environmental Sciences, University of Colorado, Boulder, CO 80309, USA

⁶CSIRO Environment, Spendale, Victoria, 3195, Australia

⁷Scripps Institution of Oceanography, University of California San Diego, La Jolla, CA 92093, USA

⁸School of Chemistry, University of Bristol, Bristol, BS8 1TS, UK

⁹Center for Global Change Science, Massachusetts Institute of Technology, Cambridge, MA 02139, USA

¹⁰School of Earth and Atmospheric Sciences, Georgia Institute of Technology, Atlanta, GA 30332-0340, USA

Correspondence: Rona L. Thompson (rlt@nilu.no)

Received: 22 August 2023 – Discussion started: 30 August 2023

Revised: 20 November 2023 – Accepted: 4 December 2023 – Published: 30 January 2024

Abstract. The hydroxyl radical (OH) largely determines the atmosphere's oxidative capacity and, thus, the lifetimes of numerous trace gases, including methane (CH₄). Hitherto, observation-based approaches for estimating the atmospheric oxidative capacity have primarily relied on using methyl chloroform (MCF), but as the atmospheric abundance of MCF has declined, the uncertainties associated with this method have increased. In this study, we examine the use of five hydrofluorocarbons (HFCs) (HFC-134a, HFC-152a, HFC-365mfc, HFC-245fa, and HFC-32) in multi-species inversions, which assimilate three HFCs simultaneously, as an alternative method to estimate atmospheric OH. We find robust estimates of OH regardless of which combination of the three HFCs are used in the inversions. Our results show that OH has remained fairly stable during our study period from 2004 to 2021, with variations of < 2% and no significant trend. Inversions including HFC-32 and HFC-152a (the shortest-lived species) indicate a small reduction in OH in 2020 ($1.6 \pm 0.9\%$ relative to the mean over 2004–2021 and $0.6 \pm 0.9\%$ lower than in 2019), but considering all inversions, the reduction was only $0.5 \pm 1.1\%$, and OH was at a similar level to that in 2019.

1 Introduction

The oxidative capacity of the atmosphere is largely controlled by the concentration of hydroxyl radicals (OH) in the troposphere (Lelieveld et al., 2016) and determines the atmospheric lifetime of numerous species including methane (CH₄), other volatile organic compounds, and carbon monoxide (CO). Since the atmospheric lifetime of OH

is very short, ~ 1 s (Lelieveld et al., 2004), it is impossible to directly determine the concentration of OH on temporal and spatial scales relevant for understanding the overall tropospheric oxidation capacity and its integrated effect on longer-lived species, such as CH₄ or CO. Therefore, OH concentrations are estimated either by atmospheric chemistry transport models (ACTMs) (e.g. Anderson et al., 2021; Nicely et

al., 2017; Lelieveld et al., 2016; He et al., 2021; Voulgarakis et al., 2013) or via proxy methods, which infer the OH oxidative capacity from changes in a reactant species, most commonly methyl chloroform (MCF) (e.g. Montzka et al., 2011; Naus et al., 2021; Bousquet et al., 2005; Krol and Lelieveld, 2003; Rigby et al., 2017; Turner et al., 2017; McNorton et al., 2016; Prinn et al., 2001, 1992; Patra et al., 2021).

ACTMs estimate OH concentrations by modelling its chemical formation and loss in the atmosphere. There are both primary and secondary formation mechanisms: the primary mechanism is via photolysis of ozone (O₃) and the secondary mechanism is via recycling of OH in radical reaction chains and accounts for about two-thirds of the total OH source (Lelieveld et al., 2016). There are, however, significant differences in OH abundance and distribution between models, which has been attributed to differences in chemical mechanisms, frequency of O₃ photolysis, abundances of O₃ and CO (Nicely et al., 2017), humidity, and NO_x concentrations (Wild et al., 2020).

For many years, proxy methods have inferred the OH oxidative capacity using observations of MCF partly because relatively accurate emission magnitudes were derivable from its reported production. The suitability of MCF as tracer for examining changes in OH was enhanced after 1998, because MCF has nearly negligible emissions after that time so that its atmospheric abundance has been dominated by its reaction with OH (Montzka et al., 2011; Naus et al., 2021). However, with the decreasing atmospheric abundance, it is possible that the ocean has started outgassing MCF, and there are potentially ongoing low-level emissions from continued and exempted industrial production of MCF, both of which lead to considerable uncertainties in the MCF source (Patra et al., 2021; Wennberg et al., 2004; Naus et al., 2021). Moreover, with the decreasing atmospheric abundance of MCF (~1.35 ppt in 2021), the variability in the measurements means that the relative uncertainty in the global abundance is also becoming more important. This can be seen from the expression for the oxidative capacity:

$$k(t)[\text{OH}] = \frac{E}{B} - \frac{dB}{B dt}, \quad (1)$$

where E is the emission and B is the abundance of MCF. Considering the uncertainty in the emissions and the continuously declining MCF abundance, the uncertainty in OH derived from this method will become more problematic in the future.

The considerable uncertainty in both derivations of OH, from ACTMs and via MCF, can be seen in the disparate estimates of OH variability and trends. Most estimates based on MCF are quite sensitive to the assumed or derived emission trends over time, and some indicate a decrease in OH from about 2005 (Rigby et al., 2017; McNorton et al., 2016) while one study shows no trend (Patra et al., 2021), whereas most estimates from ACTMs indicate an increasing trend in OH (Stevenson et al., 2020; Zhao et al., 2020; Dalsøren

Table 1. Atmospheric lifetimes for the five HFC species used in this study. The prior and posterior lifetimes are those calculated by the AGAGE 12-box model and are determined by the OH concentration and rate constants.

Species	Lifetime reference (years)	Lifetime prior (years)	Lifetime post (years)
HFC-134a	13.4 ^a	14.5	14.5
HFC-152a	1.5 ^a	1.6	1.6
HFC-365mfc	9.9 ^b	7.1	7.2
HFC-245fa	7.7 ^a	7.5	7.5
HFC-32	5.2 ^a	5.6	5.4

^a Ko et al. (2013), ^b Ehhalt et al. (2001).

et al., 2016). Having a better constraint on OH is of upmost importance in order to better understand the recent changes in CH₄, which since 2007 has been rising in the atmosphere and at an increasing rate, with the largest recorded annual increases in 2020, 2021, and 2022 (Peng et al., 2022) (https://gml.noaa.gov/ccgg/trends_ch4/, last access: 17 January 2024).

In this study, we explore the possibility of using multiple hydrofluorocarbon (HFC) species simultaneously to constrain the OH oxidative capacity. Some individual HFC and hydrochlorofluorocarbon (HCFC) alternatives to MCF have been explored in the past (Huang and Prinn, 2002), and a multi-species approach has also been suggested by Liang et al. (2017) as an alternative to MCF but has not yet been implemented. HFCs are synthetic species used in a variety of applications and were developed as substitutes for ozone-depleting chlorofluorocarbons (CFCs) and HCFCs (Campbell et al., 2005). We selected HFCs that have an atmospheric sink primarily due to OH (i.e. > 99 % of the loss) and have lifetimes of less than 14 years (Ko et al., 2013). An additional criterion was that the HFCs have atmospheric records starting in 2005 or earlier. Thus, the HFCs chosen are HFC-134a, HFC-152a, HFC-365mfc, HFC-245fa, and HFC-32 (Table 1). These HFCs are used in a number of applications, specifically in refrigeration (HFC-134a, HFC-152a), air conditioning (HFC-134a, HFC-245fa, HFC-32), foam expansion (HFC-152a, HFC-245fa, HFC-365mfc), and as aerosol propellants (HFC-152a).

Our approach optimizes the OH oxidative capacity to reconcile modelled and observed mole fractions of three HFCs simultaneously. In addition, prior emission estimates of the three HFCs are also optimized. This approach relies on the assumption that errors in the prior emissions of each species are largely independent, whereas the effect of errors in the prior OH estimate on the HFCs is fully correlated. We use the AGAGE 12-box model (Cunnold et al., 2002; Rigby et al., 2013) to model mole fractions of HFCs, and we use its adjoint model, with a quasi-Newton algorithm (Thompson et al., 2018), to optimize OH and HFC emissions for the period

2000 to 2021. We chose this simple 12-box model to test the approach since it has a fast computation time (a few minutes for an inversion of 22 years), which allows multiple combinations of species to be tested and for ensembles to be run for uncertainty analysis. As a test for the robustness of our method, we examine the results using the 10 possible combinations of three HFCs from our five selected species.

2 Methodology

2.1 Modelling and inversion framework

We used the AGAGE 12-box model of the atmosphere, and its adjoint, which has four equal-area boxes in the latitudinal direction and three vertical layers representing the lower and upper troposphere and stratosphere (Cunnold et al., 2002; Thompson et al., 2018). We modified this model to simulate three HFCs and to optimize their emissions and the OH oxidative capacity simultaneously. HFC mole fractions were modelled at monthly resolution using monthly-resolved prior emissions and OH concentrations and species-specific OH rate constants (Table S1 in the Supplement). The emissions were optimized monthly for each of the four latitudinal boxes, and OH was optimized monthly for each of the 12 boxes. The optimal emissions and OH are found by minimizing the following cost function (Tarantola, 2005):

$$J(\mathbf{x}) = \frac{1}{2}(\mathbf{x} - \mathbf{x}_b)^T \mathbf{B}^{-1} (\mathbf{x} - \mathbf{x}_b) + \frac{1}{2}(\mathbf{H}(\mathbf{x}) - \mathbf{y})^T \mathbf{R}^{-1} (\mathbf{H}(\mathbf{x}) - \mathbf{y}), \quad (2)$$

where \mathbf{x} and \mathbf{x}_b are vectors of the posterior and prior emissions and OH oxidative capacity, respectively; \mathbf{y} is a vector of observed mole fractions for the three HFC species; $\mathbf{H}(\mathbf{x})$ is the function of atmospheric transport and chemistry; and \mathbf{B} and \mathbf{R} are the prior and observation error covariance matrices, respectively. Atmospheric transport was calculated as horizontal and vertical mixing rates between the boxes, which were provided monthly based on Cunnold et al. (2002), and the model was integrated in 2 d time steps using the fourth-order vectorized Runge–Kutta algorithm. Chemical loss, which in this study is solely due to OH, was calculated for each box and time step. The solution, \mathbf{x} , to the cost function was found using the quasi-Newton algorithm, M1QN3.

Initial mole fractions in each box for HFC-134a and HFC-152a were calculated by running the forward model for 22 years with constant emissions equalling the estimated global annual atmospheric loss to match the initial mole fractions measured in 2000. For the other species, it was assumed that the atmospheric mole fraction was zero in the year 2000.

2.2 Atmospheric observations and data processing

We use observations from the Global Monitoring Laboratory of the National Oceanic and Atmospheric Administration (NOAA) network (<https://gml.noaa.gov/aftp/data/>, last access: 17 January 2024), from the Advanced Global Atmospheric Gases Experiment (AGAGE) network (https://agage2.eas.gatech.edu/data_archive/, last access: 17 January 2024), and, for HFC-245fa and HFC-365mfc, from the Cape Grim Air Archive (southern hemisphere, SH) and the Scripps Institution of Oceanography (SIO) collection of archived air samples (northern hemisphere, NH) (Vollmer et al., 2011) (Tables S2 and S3). NOAA observations are from paired flask samples taken at 12 relatively remote sites, which have been analysed using gas chromatography with mass spectrometry (GC–MS) and are available at weekly to biweekly frequency (Montzka et al., 2015). The NOAA data were averaged to monthly means. AGAGE observations are made in situ using GC–MS instruments and are thus available at much higher temporal frequency (Prinn et al., 2018; <https://agage.mit.edu>, last access: 17 January 2024). In this study, we have used the monthly mean data provided by AGAGE (which exclude observations influenced by local emissions). Initial AGAGE measurements of HFC-134a, HFC-152a, and HFC-365mfc at Mace Head (MHD), Cape Grim (CGO), Jungfraujoch (JFJ), and Zeppelin (ZEP) were performed with the AGAGE Absorption Desorption System (ADS) and GC–MS systems (Vollmer et al., 2011; Simmonds et al., 1995). Starting from the end of 2004, new-generation Medusa GC–MS systems were phased in (Miller et al., 2008). Measurements at Monte Cimone were performed with a different GC–MS system (Maione et al., 2013). The archive data are from air samples taken from 1973 to 2010 at a small number of sites and were analysed on Medusa GC–MS systems at CSIRO and SIO (Vollmer et al., 2011).

Monthly means for each of the four latitudinal boxes were derived by averaging monthly data from all sites within each box. Outliers at each site (defined as outside ± 2 standard deviations of the mean over a running time window of 12 months) were removed. The archive data at Cape Grim and Trinidad Head compared well with the AGAGE data for HFC-245fa and HFC-365mfc at these sites during overlapping years. Also, the AGAGE and NOAA data compared very well at the four sites where both networks' data are available, except for HFC-32 and HFC-365mfc. For HFC-32 and HFC-365mfc, the difference between the networks was significant and increased with increasing atmospheric abundance (the difference relative to abundance showed no significant trend over 2000–2021). Therefore, we calculated a monthly dependent adjustment factor for HFC-32 and HFC-365mfc to adjust the NOAA observations to match those of AGAGE (Fig. S1 in the Supplement). This adjustment was calculated as a quadratic fit to the difference between the NOAA and AGAGE observations at sites where both networks' data are available (i.e., four sites). We then applied the

adjustment across the four sites to correct the data at all sites. Since it is not known which of the two scales is more accurate, we also include inversions in which the AGAGE data for HFC-32 and HFC-365mfc are adjusted to match those of NOAA (i.e. using the same quadratic fit). (The assimilated observation records for each species and box are shown in Fig. S2.)

The observation uncertainties used in the inversion need to represent the uncertainty of the monthly mean values for each box, that is, how well they represent the true means. Uncertainties were thus calculated for each month and box as the greater of the standard deviation of mole fraction from all sites in that box or 1 % of the mean monthly mean mole fraction. (The choice of 1 % is based on the approximate measurement uncertainty.) If this value was less than 0.5 % of the global mean mole fraction for that month, then the latter was set as the minimum.

2.3 Emissions and other input data

Prior emissions for the four surface/lower troposphere boxes were taken from estimates from the Emission Database for Global Atmospheric Research (EDGARv7) (EDGAR, 2022). These data were provided at annual temporal and at 0.1° spatial resolutions and were averaged to each box and interpolated in time to monthly resolution. For the NH, prior uncertainties on the emissions were set to the greater of 50 % of the value in each month and box or 50 % of the mean over the whole time series for that box. This was done to increase the uncertainty early in the time series when the absolute emissions are small. For the SH, since the emissions are very small, the uncertainties were set to the greater of 25 % of the global mean value in each month or 25 % of the global mean over the whole time series. This resulted in a mean global uncertainty of approximately 60 % for all species. The emission errors in each box were assumed to be uncorrelated with other boxes, but we assumed some temporal correlation within each box, which was calculated as an exponential decay with time with a scale length of 60 months. This long correlation length was chosen as the year-to-year variations in the emissions should be relatively small, and the emissions should evolve according to economic demand and policy surrounding their production and use. We also performed sensitivity tests for this choice, which are described in Sect. 2.4.

Prior OH concentrations were provided monthly for each box based on the Spivakovsky et al. (2000) climatology and the temperature for each month and box was taken from the European Centre for Medium-Range Weather Forecasts (ECMWF) reanalysis data (ERA5). The uncertainty on the prior OH concentrations was set to 60 % in all boxes, which is equal to the global mean uncertainty on the prior emissions.

2.4 Sensitivity tests

To test the sensitivity of the choice of uncertainties on the prior emissions and the OH concentration, we carried out inversions with varying percentage uncertainties using the species combination HFC-134a, HFC-152a, and HFC-365mfc. These tests were using the following processes. (i) They were using smaller but still balanced prior emission and OH uncertainties; prior emission uncertainties were calculated as described above but using 25 % in the NH and 12.5 % of the global mean emission in the SH, and the OH uncertainty was 30 % (i.e., equal to the global mean emission uncertainty). (ii) They were using the same prior emission uncertainties as described above (50 % in the NH and 25 % of the global mean in the SH) but with a smaller OH uncertainty of 50 %. (iii) They were using the same prior emissions uncertainties as in (ii) and OH uncertainty of 60 % but with a temporal correlation scale length of 24 months. (iv) Finally, they were the same as in (iii) but using a correlation scale length of 36 months. The posterior emissions were found to be insensitive to the choice of uncertainty (Fig. S3). However, the amplitude of the variability in OH was sensitive to the OH uncertainty, with smaller amplitude using 50 % uncertainty compared to 60 %, and to the temporal correlation scale length of the fluxes, with smaller amplitude with scale lengths of 24 and 36 months. The temporal pattern of OH variability was unaffected though. We chose to use globally balanced OH and emission uncertainties at 60 % and a temporal correlation length of 60 months, with the latter chosen to minimize small, high-frequency variations in the posterior emissions of some species, which we consider to be noise.

We also carried out a synthetic data test to determine how well the inversion can constrain OH. For this test, we generated time series of HFC-134a, HFC-152a, and HFC-365mfc mole fractions for each lower troposphere box and month using the EDGARv7 emissions and OH (generated by randomly perturbing the Spivakovsky OH estimates with temporal correlation length of 36 months). Random errors consistent with our observation uncertainties were added to the time series of HFC-134a, HFC-152a, and HFC-365mfc to form the synthetic observations. For the inversion, we used prior emissions generated by adding random errors (with error characteristics consistent with our prior emission uncertainties) to the EDGARv7 emissions. For the prior OH, we used the Spivakovsky climatological estimate. (Note that in the synthetic test the true emissions are EDGARv7 and the true OH is the randomly perturbed OH.) The inversion captured the true emissions very well with reductions in the RMSE for HFC-134a, HFC-152a, and HFC-365mfc of 19.3 to 6.8, 6.9 to 1.3, and 0.22 to 0.10 Gg yr⁻¹, respectively. The inversion also captures the annual mean variability in OH quite well with correlation coefficients (R^2 values) for the posterior versus the true OH globally and for the NH and SH of 0.44, 0.76, and 0.83, respectively (Fig. S4). There is a lag time of 2–3 years before the posterior OH departs from the

prior value, which is due to the fact that the abundance of HFC-365mfc is still very low during these years; hence, the sensitivity of OH in our inversion to this species is then also low.

3 Results

3.1 Atmospheric trends of HFC species

All HFC species in our study increased in the atmosphere from 2000 to 2021 but with differing temporal patterns, which reflect the different evolution of emissions and the different lifetimes of each species (Fig. 1). HFC-134a exhibited a small positive trend in its growth rate, which had a mean of 4.6 ppt yr^{-1} and a trend of 0.10 yr^{-1} throughout the 22-year study period. HFC-152a increased quasi-steadily at a rate of 0.50 ppt yr^{-1} until 2008, when the rate decreased to less than 25 % of its initial value. HFC-365mfc increased quasi-steadily at a rate of 0.06 ppt yr^{-1} until 2017, when its growth rate decreased by nearly 50 %. The abundance of HFC-245fa was below the detection limit until 2003, after which it increased steadily with a mean growth rate of 0.17 ppt yr^{-1} . And HFC-32 exhibited a positive trend in growth rate with a mean of 1.7 ppt yr^{-1} and a trend of 0.22 ppt yr^{-2} .

The simulated mole fractions using the prior emissions had quite different errors with respect to the observations of each HFC, indicating that the errors in the emissions are largely uncorrelated across the species. The prior emission estimate of HFC-134a leads to an overestimate of the atmospheric increase throughout the study period, while that of HFC-152a gives a good agreement with the atmospheric trend until 2010, after which it leads to an overestimate of the growth. For HFC-365mfc, the prior emission estimate leads to an underestimate of the atmospheric increase in the first 10 years, resulting in an underestimate of the atmospheric abundance until 2020. Similarly, for HFC-245fa the prior estimate leads to an underestimate of the atmospheric increase in the first 10 years but then gives a good agreement with the atmospheric abundance between 2015 and 2020. For HFC-32, the prior emissions provide a good agreement with the observations until 2010 and subsequently overestimate and then underestimate the atmospheric abundance.

The mole fractions modelled using the posterior fluxes, on the other hand, match the observations well for all years in our study period (Figs. 1 and S5). The root-mean-square error (RMSE) of the model–observation differences were greatly reduced using the posterior versus the prior fluxes. The reduction in the RMSE (normalized by the global mean mole fraction of each species) from prior to posterior was for HFC-134a, HFC-152a, HFC-365mfc, HFC-245fa, and HFC-32, respectively: 21.7 % to 0.6 %, 15.6 % to 3.5 %, 20.3 % to 2.4 %, 10.5 % to 2.5 %, and 9.9 % to 2.4 %

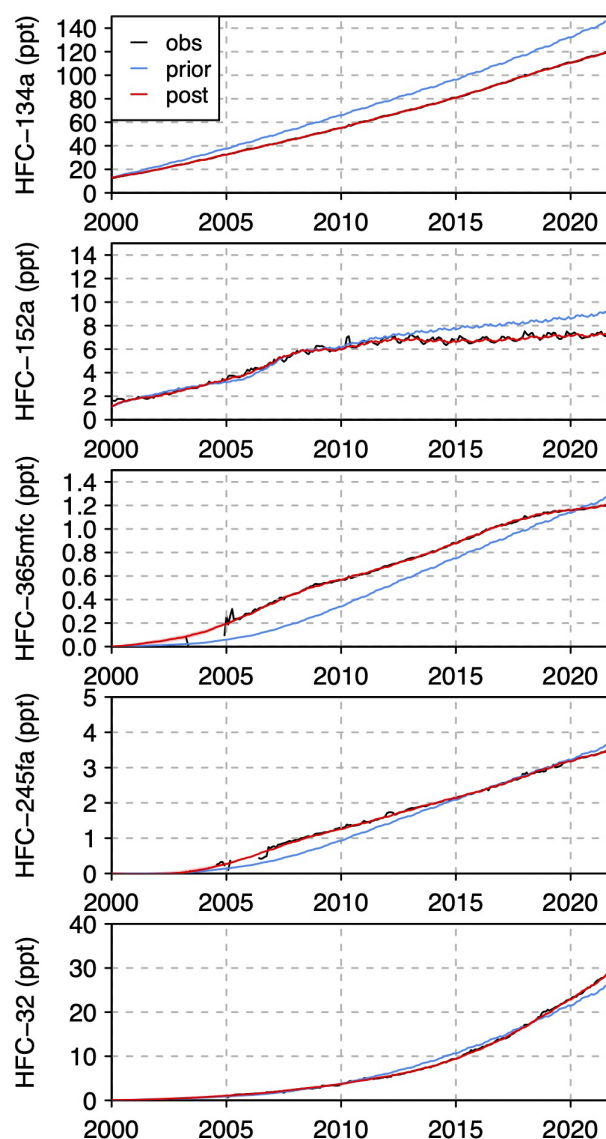


Figure 1. Time series of the modelled and observed global monthly mean mole fractions in the lower troposphere for the five HFC species used in this study. For HFC-32 and HFC-365mfc, the observations and posterior results are shown for the case in which the NOAA observations were adjusted to the AGAGE scale. The observations are shown in black, and the modelled values using prior emissions are shown in blue. The posterior modelled values are shown in red and are the means of the six inversions that included the respective species, and the ranges are indicated by the red shading (since the range for each species is very small the shading is hidden by the mean curves).

3.2 Emission estimates

Figure 2 shows the prior and posterior emissions estimates for each species. The range of posterior estimates from all 10 inversions (using the HFC-365mfc and HFC-32 observations in which the NOAA data were adjusted to match the AGAGE scale) is small, generally within $\pm 5 \%$ of the mean (Fig. S6).

Using the dataset in which the AGAGE data for HFC-365mfc and HFC-32 were adjusted to the NOAA scale resulted in nearly the same emissions for these species, except for HFC-32 for which the increase in emissions was smaller after 2016 and followed closely the prior emissions.

Although the primary aim of our study is not to analyse the posterior emissions of the five HFC species, there are a few noteworthy features. For three species (HFC-152a, HFC-365mfc and HFC-245fa), the inversions find an appreciable decrease (or for HFC-245fa a plateauing) in the emissions starting from July 2007 and continuing until 2009. We propose that this could be a result of the global financial crisis, which led to a significant reduction in international trade and investment, which culminated in 2008 (IMF, 2009). The three species that appear to have been affected are used as foam expanding agents and aerosol propellants, whereas the two species that were not affected (i.e., HFC-134a and HFC-32) are primarily used in refrigeration and air conditioning.

The inversions also find a decrease in the emission of HFC-365mfc and a plateauing in the emissions of HFC-134a, following the signing of the Kigali Amendment (KA) in October 2016. The KA to the Montreal Protocol is an international agreement to reduce the consumption and production of HFCs, which are powerful greenhouse gases. Under the KA, most industrialized countries commit to a reduction in the production and consumption of HFCs of 10 % by 2019, 40 % by 2024, and 80 % by 2034, while most developing economies commit to reductions of 10 % by 2029 and 80 % by 2045. We propose that the emissions of these HFCs may have reduced (or in the case of HFC-134a, plateaued) in response to the KA and in anticipation of tighter controls on their production and use.

3.3 Estimate of OH oxidative capacity

Figure 3 shows the annual mean OH oxidative capacity for the troposphere estimated from our inversions. Note that we only show the OH results from 2004, because there are very few observations of HFC-365mfc and HFC-245fa and no observations of HFC-32 prior to 2005, and thus the OH estimated from the inversions remained close to the prior estimate for the first 4 years. We show the mean and range of results obtained with two sets of 10 inversions: (i) using data in which HFC-365mfc and HFC-32 observations from NOAA were adjusted to match the AGAGE scale (“adjusted NOAA”) and (ii) using data in which the AGAGE observations were adjusted to match the NOAA scale (“adjusted AGAGE”). We also show a third time series, namely, a subset selecting only the inversions that included the shorter-lived species, HFC-32 and HFC-152a. (In Fig. S7, we show the OH estimate from individual inversions.)

Up to 2017, all three time series are quite consistent. However, from 2017 the inversions using adjusted NOAA result in somewhat lower OH values compared to adjusted AGAGE. This difference is largely due to differences in the

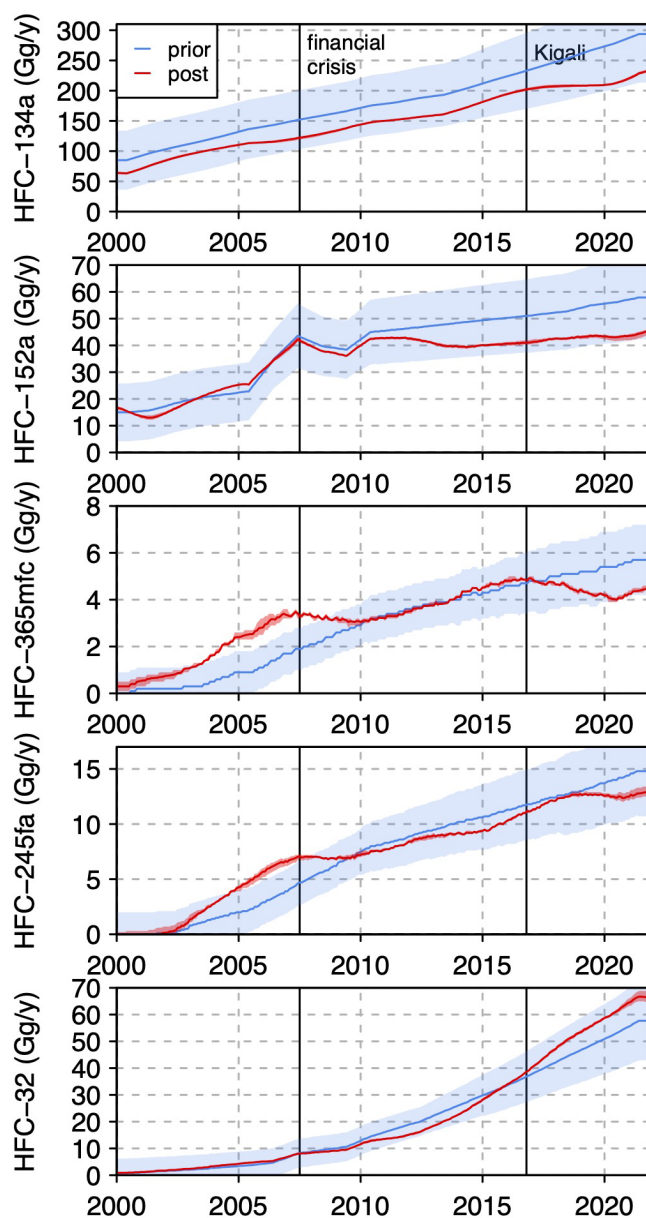


Figure 2. Time series of the global monthly mean emissions (Gg yr^{-1}) for the five HFC species. Note the posterior results are shown for the case in which the NOAA observations of HFC-32 and HFC-365mfc were adjusted to the AGAGE scale. The posterior (red) curves are the means of the six inversions that included the respective species and ranges are indicated by the red shading (note that the range is very small, and the shaded area is partially obscured by the mean curve). World events that may have influenced the emissions of some species are indicated by the vertical black lines: the start of the financial crisis of 2007–2008 and the signing of the Kigali Amendment to the Montreal Protocol in October 2016.

HFC-32 observations between the two datasets, with the adjusted NOAA showing a stronger increase after 2017, which is matched in the model by increasing the emissions of HFC-32 but also by decreasing OH. The difference between these

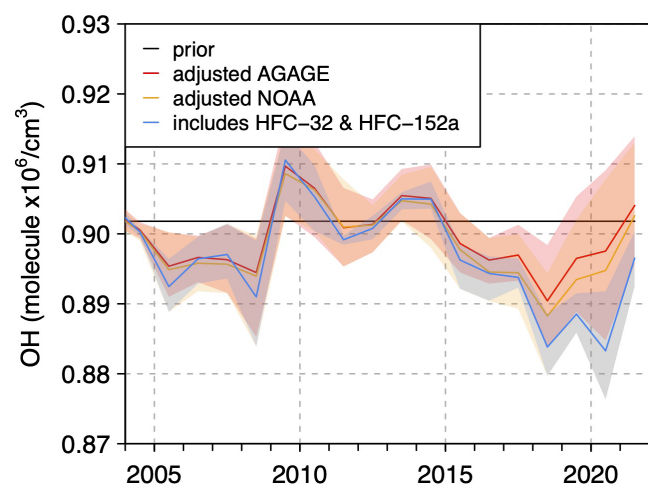


Figure 3. Time series of the global annual mean OH concentration shown for 2004–2021 (the period prior to 2004 is not shown as the posterior estimates remain close to the prior owing to the time lag in the sensitivity of OH and because there are very few observations of HFC-365mfc and HFC-245fa and no observations of HFC-32 prior to 2005). The mean estimates for inversions using two different sets of observations for HFC-32 and HFC-365mfc are shown: (i) adjustments made to the AGAGE data to match the NOAA calibration scale (red) and (ii) adjustments made to NOAA data to match the AGAGE calibration scale (orange), as well as the mean of inversions that include both the shorter-lived species, HFC-32, and HFC-152a (blue). The prior OH is shown by the black line.

two time series indicates the uncertainty in our OH estimate due to the scale uncertainties in HFC-32 and HFC-365mfc. Furthermore, the inversions including both HFC-32 and HFC-152a result in lower OH values from 2017 compared to the mean of all inversions (regardless of the dataset used). This may reflect the increased sensitivity of derived OH in our analysis to these shorter-lived species, as the mixing ratios of shorter-lived species will show a stronger response to changes in OH than longer-lived species (this can be seen from Eq. 1).

4 Discussion

4.1 Comparison with other OH estimates

We compared our OH estimate from inversions including both HFC-32 and HFC-152a to other estimates from ACTMs and from optimizations using MCF (Fig. 4a). For the comparison, we selected studies that cover at least the period 2005–2015. Overall, we find a smaller degree of variability in our annual OH anomaly (< 2 %) compared to the estimates shown based on MCF observations (< 6 %) (e.g. Patra et al., 2021; Naus et al., 2021) but consistent with the degree of variability found by Montzka et al. (2011) also using MCF. The magnitude of our variability is close to that estimated by Nicely et al. (2018) (< 2 %) using an ACTM

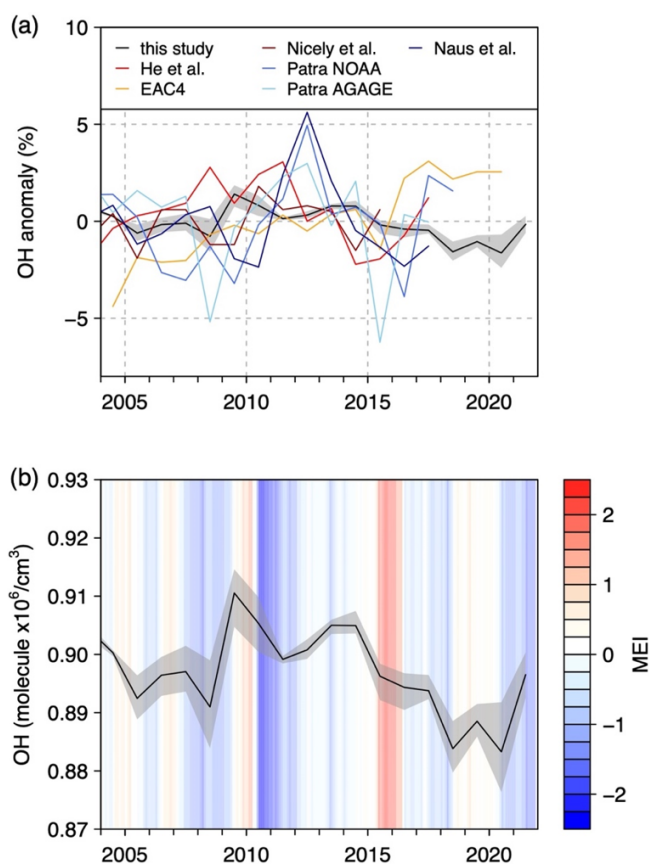


Figure 4. Time series of the global annual mean OH concentration from this study (mean of all inversions including HFC-32 and HFC-152a). Comparison with independent estimates from ACTMs (He et al., 2021; Nicely et al., 2018) and EAC4 (Inness et al., 2019; and based on optimizations using MCF; Naus et al., 2021; using NOAA observations; and the two estimates from Patra et al. 2021, using NOAA and AGAGE observations separately) (a). Comparison of the estimate from this study with the monthly Multivariate ENSO Index (MEI), with red indicating El Niño and blue La Niña phases (b).

and that from the Copernicus Atmospheric Monitoring Service (CAMS) reanalysis product, EAC4 (Inness et al., 2019) (< 2.5 %). The estimate of He et al. (2021) is also based on an ACTM but showed higher variability (< 4 %) than the other ACTM estimates.

EAC4 is the only estimate in Fig. 4a that indicates an increasing trend, but this result is consistent with other ACTM estimates (not shown in Fig. 4a since they end earlier than 2015) that indicate an increase in OH from at least 2005 (Dalsøren et al., 2016; Stevenson et al., 2020; Zhao et al., 2020). The other estimates, including our own, do not show any significant trend from 2005–2021.

Previous studies have found a link between OH variability and the El Niño–Southern Oscillation (ENSO) with lower OH values during El Niño versus La Niña periods (Anderson et al., 2021; Patra et al., 2021; Zhao et al., 2020; Prinn

et al., 2005). Although the mechanism for the correlation is not fully understood, it is thought to be driven by changes in NO_2 and CO abundances (Anderson et al., 2021). Our OH estimate is weakly negatively correlated with the Multivariate ENSO Index (MEI); with lags of 6 and 9 months, the correlation is $r = -0.24$ (p value = 9×10^{-4}) and $r = -0.33$ (p value = 6×10^{-6}), respectively (Figs. 4b and S8).

In our OH estimate from inversions including the two shortest-lived species in our study (i.e., HFC-32 and HFC-152a), the year 2020 had the lowest OH value, with an anomaly of $-1.6 \pm 0.9\%$ (where the uncertainty is the standard deviation of inversion results), which was lower by $0.6 \pm 0.9\%$ than that in 2019, but not significantly different from that derived for 2018. One other study using an ACTM has also pointed to a lower OH value in 2020 as a result of decreased NO_x emissions during the Covid-19 economic restrictions (Peng et al., 2022). However, our result for 2020 has a considerable uncertainty as the average anomaly of all inversions is only $-0.5 \pm 1.1\%$ in 2020, and this year has a similar OH value to that in 2019.

4.2 Impact of OH on the CH_4 budget

Since CH_4 has been increasing in the atmosphere since 2007, with the highest ever measured annual increases in 2020, 2021, and 2022 (https://gml.noaa.gov/ccgg/trends_ch4/), there is considerable interest and urgency in better understanding changes in the OH oxidative capacity. Already, one study attributes some of the CH_4 increase in 2020 to a decline in OH concentration (Peng et al., 2022), while at present no study of 2021 is yet available. Other studies have proposed that a decline in OH from 2005 may be responsible for the general increasing trend in CH_4 in the atmosphere from 2007 (Rigby et al., 2017; Turner et al., 2019), but the magnitude of uncertainty in these studies is large and prevent a definitive conclusion on any trends.

We examine the impact of OH on the CH_4 budget using our estimate versus the climatology of Spivakovsky et al. (2000). For this, we again use the AGAGE 12-box model using prior CH_4 emissions as described in Table 2. For the spin-up, we use the same procedure as for HFCs (see Sect. 2.1). For the inversion, we used observations at 42 sites in the NOAA discrete sampling network (<https://gml.noaa.gov/aftp/data/>), which were selected on the basis that they had observations quasi-continuously throughout the period 2005–2021 (see Table S5 for the list of sites used in each box). The observations were averaged to monthly means for each latitudinal box (see Fig. S8). The prior emission uncertainty was set to 25% of the emission in each box and month with a temporal correlation scale length of 3 months.

Overall, the impact on the posterior emission estimates from using the climatological versus our optimized OH estimate is small (Fig. 5). This is not unexpected since our OH estimate has only small interannual variations ($< 2\%$) and has no trend. There are, however, a few differences. Notably,

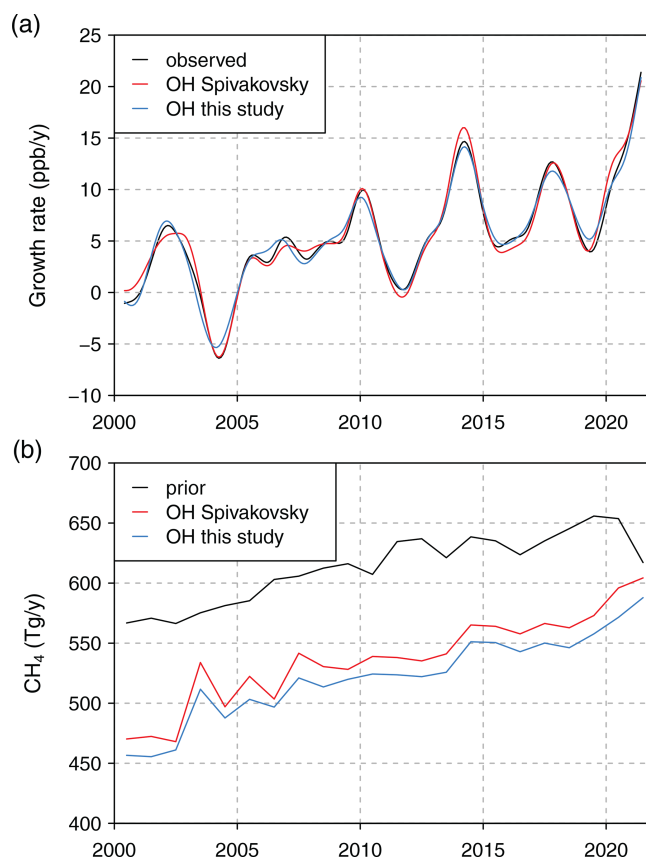


Figure 5. Global annual CH_4 growth rate from observations and using the AGAGE model using the climatological versus our estimate of OH (a) and the global source estimated from inversions using climatological versus our estimate of OH (b).

using our OH estimate results in a smaller increase in emissions between 2019 and 2020 ($14 \pm 16 \text{ Tg yr}^{-1}$) compared to using the climatology ($23 \pm 16 \text{ Tg yr}^{-1}$). This is due to the decrease in our OH estimate in 2020 compared to 2019 (of 0.6%). In fact, the total CH_4 loss in 2020 is greater than in 2019 using both OH estimates, simply because the atmospheric CH_4 burden is greater in 2020, but our OH estimate has a 0.6% lower loss rate in 2020 versus 2019. In contrast, the large increase in atmospheric CH_4 in 2021 is not due to an anomaly in the loss rate but to an even larger increase in emissions, which is $16 \pm 17 \text{ Tg yr}^{-1}$ more than in 2020 according to our estimate.

5 Conclusions and outlook

Estimates of the atmospheric oxidative capacity due to OH have hitherto relied primarily on methyl chloroform (MCF). However, as the atmospheric abundance of MCF has decreased the uncertainty in the OH derived with this approach has increased, meaning that alternatives to MCF will soon be needed. In this study, we have explored the potential to

Table 2. Prior CH₄ emissions used in the AGAGE 12-box model. The totals are the mean for the period 2005 to 2021.

Source	Dataset	Temporal resolution	Total (Tg yr ⁻¹)
Anthropogenic	EDGAR-v7 (EDGAR, 2022)	Annual	347
Wetlands (net incl. mineral soil sink)	LPX-Bern* (Spahni et al., 2011)	Monthly	206
Biomass burning	GFED-v4.1s (van der Werf et al., 2017)	Monthly	15
Ocean	Weber et al. (2019)	Monthly, climatology	10
Geological (land only)	Etiopé et al. (2019)	Annual, climatology	15
Termites	CAMS-GLOB-TERM-v1.1 (Doubalova and Sindelarova, 2018)	Monthly, climatology	20
Total			613

* Since this estimate is only available until 2020, we also used the 2020 estimate for 2021.

use hydrofluorocarbons (HFCs) in multi-species inversions to constrain OH. The HFCs (HFC-134a, HFC-152a, HFC-365mfc, HFC-245fa, and HFC-32) were selected on the basis that their loss in the atmosphere is > 99 % due to OH oxidation and that their lifetimes are relatively short, with the longest being 14 years. Multiple inversions were performed, each using three HFCs simultaneously, which were chosen from the five species listed above.

We find that the OH estimated from our inversions was very similar from 2004 to 2017 (within $\pm 2\%$) regardless of the combination of species. After 2017, we found some differences in the results depending on whether the species HFC-32 and HFC-365mfc were adjusted to the AGAGE or NOAA scales, with inversions using data adjusted to the AGAGE scale giving on average 0.3 % lower OH from 2018 to 2021. Also, inversions that included both HFC-32 and HFC-152a – the shortest-lived species in our study – resulted in even lower OH values (by 1 %) from 2018 to 2021 (relative to early years), likely because they are more sensitive to inter-annual variations in OH. The inversions including HFC-32 and HFC-152a also found a negative anomaly in OH in 2020, i.e. $1.6 \pm 0.9\%$ below the mean for 2004 to 2021 and $0.6 \pm 0.9\%$ lower than in 2019, but the average anomaly of all inversions was only $0.5 \pm 1.1\%$ lower in 2020. Overall, the inversions resulted in relatively small variations in OH, i.e., < 2 % and no trend over the period constrained by our inversions.

Using the OH estimate from our study, an inversion of CH₄ resulted in similar global emissions compared to using a climatological OH estimate. With the OH estimate based on inversions including HFC-32 and HFC-152a, however, the resulting increase in CH₄ emission from 2019 to 2020 was 9 Tg yr⁻¹ smaller than that using the climatology, owing to the lower OH loss rate in 2020.

In summary, we find that multi-tracer inversions using HFC species looks to be a promising method for constraining the atmospheric OH oxidative capacity. One important question, though, is how the atmospheric mixing ratios of these HFC species will evolve in the future when considering the Kigali Amendment (KA) to the Montreal Protocol. The KA is expected to reduce the CO₂-equivalent emission of HFCs in 2050 to ~ 1 GtCO₂ eq yr⁻¹, that is, by 30 % to 50 % compared to that expected in the absence of the KA, assuming that the KA is adopted by all countries (Velders et al., 2022), with HFCs with large global warming potentials contributing more to the reduction. Thus, emissions of HFCs will likely continue up to at least 2050, although at a reduced level, meaning that the atmospheric mixing ratios should start to stabilize or, in the case of HFC-152a, start to go down. As such, this method should be applicable up to the middle of this century. In future work, we think it would be interesting to explore the multi-HFC approach using a 3D atmospheric chemistry transport model, in order to provide more information on the variability of OH within a semi-hemisphere and the influence of climate oscillations, e.g. ENSO.

Code availability. The AGAGE 12-box model and adjoint code used in this study are available from Zenodo at <https://zenodo.org/record/8172277> (Thompson, 2023).

Data availability. The HFC and CH₄ emissions from EDGAR-v7 are available from the EDGAR website: https://edgar.jrc.ec.europa.eu/dataset_ghg70 (EDGAR, 2022). Other CH₄ emissions were from (i) the Global Fire Emissions Database (GFED), available from the database <https://www.geo.vu.nl/~gwerf/GFED/GFED4/> (van der Werf et al., 2017); (ii) the land–biosphere model LPX-Bern, available upon request to Fortunat Joos (joos@climate.unibe.ch);

the ocean estimate of Weber (2019), available at <https://doi.org/10.6084/m9.figshare.9034451.v1>; the geological estimate of Etiope et al. (2019, <https://doi.org/10.5194/essd-11-1-2019>), available from <https://gml.noaa.gov/ccgg/arc/index.php?id=130> (last access: 20 July 2023); and the termites estimate from https://atmosphere.copernicus.eu/sites/default/files/2019-11/26_CAMS81_2017SC1_D81.3.4.1-201808_v1_APPROVED_Ver1.pdf (Doubalova and Sindelarova, 2018), available from <https://ads.atmosphere.copernicus.eu> (ECMWF, 2023).

The atmospheric observations of HFCs used in this paper were from (i) the NOAA Global Monitoring Laboratory (GML) network, available from <https://doi.org/10.15138/845f-af13> (NOAA GML, 2022); (ii) the AGAGE network, available from https://agage2.eas.gatech.edu/data_archive/agage/ (AGAGE, 2023); and (iii) atmospheric archive measurements, available from Vollmer et al. (2011, <https://doi.org/10.1029/2010JD015309>). The atmospheric observations of CH₄ used in this paper were from the NOAA GML network, available from <https://doi.org/10.15138/VNCZ-M766> (Lan et al., 2023).

Supplement. The supplement related to this article is available online at: <https://doi.org/10.5194/acp-24-1415-2024-supplement>.

Author contributions. RLT designed the study, wrote the code, analysed the results, and wrote the manuscript. SAM, MKV, JM, SR, PK, RGP, and DY provided the measurements of HFCs and contributed to the manuscript. JA, CL, SD, IV, HW, and RFW provided measurements.

Competing interests. The contact author has declared that none of the authors has any competing interests.

Disclaimer. Publisher's note: Copernicus Publications remains neutral with regard to jurisdictional claims made in the text, published maps, institutional affiliations, or any other geographical representation in this paper. While Copernicus Publications makes every effort to include appropriate place names, the final responsibility lies with the authors.

Acknowledgements. Rona L. Thompson received financial support from the ReGAME project funded by the Research Council of Norway (grant no. 325610). Stephen A. Montzka acknowledges the technical assistance of Brad Hall, Carolina Siso, Scott Clingan, Kyle Petersen, Debra Mondeel, Fred Moore, and station personnel involved with collecting flask air samples at sites across the globe. Measurements at Jungfraujoch are supported by the Swiss national programmes HALCLIM and CLIMGAS-CH (Swiss Federal Office for the Environment, FOEN) and by the International Foundation High Altitude Research Stations Jungfraujoch and Gornergrat (HFSJG). The AGAGE Medusa GC–MS system development, calibrations, and measurements at the Scripps Institution of Oceanography, La Jolla and Trinidad Head, CA, USA; Mace Head, Ireland; Ragged Point, Barbados; Cape Matatula, American Samoa; and Kennaoook/Cape Grim, Australia, were supported by the NASA

Upper Atmospheric Research Program in the United States with grant nos. NNX07AE89G, NNX16AC98G, and 80NSSC21K1369 to MIT and NNX07AF09G, NNX07AE87G, NNX16AC96G, NNX16AC97G, 80NSSC21K1210, and 80NSSC21K1201 to SIO. The Department for Business, Energy, and Industrial Strategy (BEIS) in the United Kingdom supported the University of Bristol for operations at Mace Head, Ireland (contract no. 1028/06/2015) and through the NASA award to MIT with sub-award to University of Bristol for Mace Head and Barbados (grant no. 80NSSC21K1369). The National Oceanic and Atmospheric Administration (NOAA) in the United States supported the University of Bristol for operations at Ragged Point, Barbados (contract no. 1305M319CNRMJ0028), and operations at Cape Matatula, American Samoa. In Australia, the Kennaoook/Cape Grim operations were supported by the Commonwealth Scientific and Industrial Research Organization (CSIRO); the Bureau of Meteorology (Australia); the Department of Climate Change, Energy, the Environment and Water (Australia); Refrigerant Reclaim Australia; and through the NASA award to MIT with sub-award to CSIRO for Cape Grim (no. 80NSSC21K1369). Measurements at Jungfraujoch are supported by the Swiss national programmes HALCLIM and CLIMGAS-CH (Swiss Federal Office for the Environment, FOEN) and by the International Foundation High Altitude Research Stations Jungfraujoch and Gornergrat (HFSJG). NOAA measurements were supported in part through the NOAA Cooperative Agreement with CIRES (no. NA17OAR4320101).

Financial support. This research has been supported by the Norges Forskningsråd (grant no. 325610).

Review statement. This paper was edited by Tim Butler and reviewed by two anonymous referees.

References

- AGAGE (Advanced Global Atmospheric Gases Experiment): AGAGE, AGAGE [dataset], https://agage2.eas.gatech.edu/data_archive/agage/, last access: 20 July 2023.
- Anderson, D. C., Duncan, B. N., Fiore, A. M., Baublitz, C. B., Follette-Cook, M. B., Nicely, J. M., and Wolfe, G. M.: Spatial and temporal variability in the hydroxyl (OH) radical: understanding the role of large-scale climate features and their influence on OH through its dynamical and photochemical drivers, *Atmos. Chem. Phys.*, 21, 6481–6508, <https://doi.org/10.5194/acp-21-6481-2021>, 2021.
- Bousquet, P., Hauglustaine, D. A., Peylin, P., Carouge, C., and Ciais, P.: Two decades of OH variability as inferred by an inversion of atmospheric transport and chemistry of methyl chloroform, *Atmos. Chem. Phys.*, 5, 2635–2656, <https://doi.org/10.5194/acp-5-2635-2005>, 2005.
- Campbell, N., Shende, R., Bennett, M., Blinova, O., Derwent, R., McCulloch, A., Yamabe, M., Shevlin, J., and Vink, T.: Chapter 11: HFCs and PFCs: Current and Future Supply, Demand and Emissions, plus Emissions of CFCs, HCFCs and Halons, in: IPCC/TEAP Special Report: Safeguarding the Ozone Layer and the Global Climate System,

- <https://www.ipcc.ch/report/safeguarding-the-ozone-layer-and-the-global-climate-system/current-and-future-supply-demand-and-emissions-of-hfcs-and-pfcs-plus-emissions-of-cfcs-halons/> (last access: 17 January 2024), 2005.
- Cunnold, D. M., Steele, L. P., Fraser, P. J., Simmonds, P. G., Prinn, R. G., Weiss, R. F., Porter, L. W., O'Doherty, S., Langenfelds, R. L., and Krummel, P. B.: In situ measurements of atmospheric methane at GAGE/AGAGE sites during 1985–2000 and resulting source inferences, *J. Geophys. Res.-Atmos.*, 107, 4225, <https://doi.org/10.1029/2001JD001226>, 2002.
- Dalsøren, S. B., Myhre, C. L., Myhre, G., Gomez-Pelaez, A. J., Søvde, O. A., Isaksen, I. S. A., Weiss, R. F., and Harth, C. M.: Atmospheric methane evolution the last 40 years, *Atmos. Chem. Phys.*, 16, 3099–3126, <https://doi.org/10.5194/acp-16-3099-2016>, 2016.
- Doubalova, J. and Sindelarova, K.: Gridded CH₄ emissions from termites, Copernicus Atmosphere Monitoring Service [data set], https://atmosphere.copernicus.eu/sites/default/files/2019-11/26_CAMS81_2017SC1_D81.3.4.1-201808_v1_APPROVED_Ver1.pdf (last access: 17 January 2024), 2018.
- ECMWF: Copernicus Atmosphere Data Store, <https://ads.atmosphere.copernicus.eu>, last access: 20 July 2023.
- EDGAR (Emissions Database for Global Atmospheric Research): Community GHG Database (a collaboration between the European Commission, Joint Research Centre (JRC), the International Energy Agency (IEA), and comprising IEA-EDGAR CO₂, EDGAR CH₄, EDGAR N₂O, EDGAR F-GASES version 7.0, European Commission, JRC [dataset], https://edgar.jrc.ec.europa.eu/dataset_ghg70 (last access: 20 July 2023), 2022.
- Ehhalt, D., Prather, M., Dentener, F., Derwent, R., Dlugokencky, E., Holland, E., Isaksen, I., Katima, J., Kirchhoff, V., Matson, P., Midgley, P., and Wang, M.: Chapter 4: Atmospheric Chemistry and Greenhouse Gases, in: TAR Climate Change 2001: The Scientific Basis, <https://www.ipcc.ch/site/assets/uploads/2018/03/TAR-04.pdf> (last access: 17 January 2024), 2001.
- Etiopie, G., Ciotoli, G., Schwietzke, S., and Schoell, M.: Gridded maps of geological methane emissions and their isotopic signature, *Earth Syst. Sci. Data*, 11, 1–22, <https://doi.org/10.5194/essd-11-1-2019>, 2019 (data available at: <https://gml.noaa.gov/ccgg/arc/index.php?id=130>, last access: 20 July 2023).
- He, J., Naik, V., and Horowitz, L. W.: Hydroxyl radical (OH) response to meteorological forcing and implication for the methane budget, *Geophys. Res. Lett.*, 48, e2021GL094140, <https://doi.org/10.1029/2021GL094140>, 2021.
- Huang, J. and Prinn, R. G.: Critical evaluation of emissions for potential new OH titrating gases, *J. Geophys. Res.*, 107, 4784, <https://doi.org/10.1029/2002JD002394>, 2002.
- IMF (International Monetary Fund): World Economic Outlook, Crisis and Recovery, ISBN: 978-1-58906-806-3, 2009.
- Inness, A., Ades, M., Agustí-Panareda, A., Barré, J., Benedictow, A., Blechschmidt, A.-M., Dominguez, J. J., Engelen, R., Eskes, H., Flemming, J., Huijnen, V., Jones, L., Kipling, Z., Massart, S., Parrington, M., Peuch, V.-H., Razinger, M., Remy, S., Schulz, M., and Suttie, M.: The CAMS reanalysis of atmospheric composition, *Atmos. Chem. Phys.*, 19, 3515–3556, <https://doi.org/10.5194/acp-19-3515-2019>, 2019.
- Ko, M. K. W., Newman, P. A., Reimann, S., and Strahan, S. E.: Lifetimes of Stratospheric Ozone-Depleting Substances, Their Replacements and Related Species, SPARC Report No. 6, World Climate Research Programme, <https://www.sparc-climate.org/publications/sparc-reports/sparc-report-no-6/> (last access: 17 January 2024), 2013.
- Krol, M. and Lelieveld, J.: Can the variability in tropospheric OH be deduced from measurements of 1,1,1-trichloroethane (methyl chloroform)?, *J. Geophys. Res.-Atmos.*, 108, 4125, <https://doi.org/10.1029/2002JD002423>, 2003.
- Lan, X., Mund, J. W., Crotwell, A. M., Crotwell, M. J., Moglia, E., Madronich, M., Neff, D., and Thoning, K. W.: Atmospheric Methane Dry Air Mole Fractions from the NOAA GML Carbon Cycle Cooperative Global Air Sampling Network, 1983–2022, Version: 2023-08-28, NOAA Global Monitoring Laboratory [data set], <https://doi.org/10.15138/VNCZ-M766>, 2023.
- Lelieveld, J., Dentener, F. J., Peters, W., and Krol, M. C.: On the role of hydroxyl radicals in the self-cleansing capacity of the troposphere, *Atmos. Chem. Phys.*, 4, 2337–2344, <https://doi.org/10.5194/acp-4-2337-2004>, 2004.
- Lelieveld, J., Gromov, S., Pozzer, A., and Taraborrelli, D.: Global tropospheric hydroxyl distribution, budget and reactivity, *Atmos. Chem. Phys.*, 16, 12477–12493, <https://doi.org/10.5194/acp-16-12477-2016>, 2016.
- Liang, Q., Chipperfield, M. P., Fleming, E. L., Abraham, N. L., Braesicke, P., Burkholder, J. B., Daniel, J. S., Dhomse, S., Fraser, P. J., Hardiman, S. C., Jackman, C. H., Kinnison, D. E., Krummel, P. B., Montzka, S. A., Morgenstern, O., McCulloch, A., Mühle, J., Newman, P. A., Orkin, V. L., Pitari, G., Prinn, R. G., Rigby, M., Rozanov, E., Stenke, A., Tummon, F., Velders, G. J. M., Visionsi, D., and Weiss, R. F.: Deriving Global OH Abundance and Atmospheric Lifetimes for Long-Lived Gases: A Search for CH₃CCl₃ Alternatives, *J. Geophys. Res.-Atmos.*, 122, 11914–11933, <https://doi.org/10.1002/2017JD026926>, 2017.
- Maione, M., Giostra, U., Arduini, J., Furlani, F., Graziosi, F., Vullo, E. L., and Bonasoni, P.: Ten years of continuous observations of stratospheric ozone depleting gases at Monte Cimone (Italy) – Comments on the effectiveness of the Montreal Protocol from a regional perspective, *Sci. Total Environ.*, 445, 155–164, <https://doi.org/10.1016/j.scitotenv.2012.12.056>, 2013.
- McNorton, J., Chipperfield, M. P., Gloor, M., Wilson, C., Feng, W., Hayman, G. D., Rigby, M., Krummel, P. B., O'Doherty, S., Prinn, R. G., Weiss, R. F., Young, D., Dlugokencky, E., and Montzka, S. A.: Role of OH variability in the stalling of the global atmospheric CH₄ growth rate from 1999 to 2006, *Atmos. Chem. Phys.*, 16, 7943–7956, <https://doi.org/10.5194/acp-16-7943-2016>, 2016.
- Miller, B. R., Weiss, R. F., Salameh, P. K., Tanhua, T., Grelally, B. R., Mühle, J., and Simmonds, P. G.: Medusa: a sample preconcentration and GC/MS detector system for in situ measurements of atmospheric trace halocarbons, hydrocarbons, and sulfur compounds, *Anal. Chem.*, 80, 1536–1545, <https://doi.org/10.1021/ac702084k>, 2008.
- Montzka, S. A., Krol, M., Dlugokencky, E., Hall, B., Jöckel, P., and Lelieveld, J.: Small interannual variability of global atmospheric hydroxyl, *Science*, 331, 67–69, <https://doi.org/10.1126/science.1197640>, 2011.
- Montzka, S. A., McFarland, M., Andersen, S. O., Miller, B. R., Fahey, D. W., Hall, B. D., Hu, L., Siso, C., and Elkins, J. W.: Recent Trends in Global Emissions of Hydrochlorofluorocarbons and Hydrofluorocarbons: Reflecting on the 2007 Adjust-

- ments to the Montreal Protocol, *J. Phys. Chem.*, 119, 4439–4449, <https://doi.org/10.1021/jp5097376>, 2015.
- Naus, S., Montzka, S. A., Patra, P. K., and Krol, M. C.: A three-dimensional-model inversion of methyl chloroform to constrain the atmospheric oxidative capacity, *Atmos. Chem. Phys.*, 21, 4809–4824, <https://doi.org/10.5194/acp-21-4809-2021>, 2021.
- Nicely, J. M., Salawitch, R. J., Canty, T., Anderson, D. C., Arnold, S. R., Chipperfield, M. P., Emmons, L. K., Fleming, J., Huijnen, V., Kinnison, D. E., Lamarque, J., Mao, J., Monks, S. A., Steenrod, S. D., Tilmes, S., and Turquety, S.: Quantifying the causes of differences in tropospheric OH within global models, *J. Geophys. Res.-Atmos.*, 122, 1983–2007, <https://doi.org/10.1002/2016JD026239>, 2017.
- Nicely, J. M., Canty, T. P., Manyin, M., Oman, L. D., Salawitch, R. J., Steenrod, S. D., Strahan, S. E., and Strode, S. A.: Changes in Global Tropospheric OH Expected as a Result of Climate Change Over the Last Several Decades, *J. Geophys. Res.-Atmos.*, 123, 10774–10795, <https://doi.org/10.1029/2018JD028388>, 2018.
- NOAA GML (NOAA Global Monitoring Laboratory): Halocarbons & other Atmospheric Trace Species (HATS), NOAA GML [dataset], <https://doi.org/10.15138/845f-af13>, 2022.
- Patra, P. K., Krol, M. C., Prinn, R. G., Takigawa, M., Mühle, J., Montzka, S. A., Lal, S., Yamashita, Y., Naus, S., Chandra, N., Weiss, R. F., Krummel, P. B., Fraser, P. J., O'Doherty, S., and Elkins, J. W.: Methyl Chloroform Continues to Constrain the Hydroxyl (OH) Variability in the Troposphere, *J. Geophys. Res.-Atmos.*, 126, e2020JD033862, <https://doi.org/10.1029/2020JD033862>, 2021.
- Peng, S., Lin, X., Thompson, R. L., Xi, Y., Liu, G., Hauglustaine, D., Lan, X., Poulter, B., Ramonet, M., Saunio, M., Yin, Y., Zhang, Z., Zheng, B., and Ciais, P.: Wetland emission and atmospheric sink changes explain methane growth in 2020, *Nature*, 612, 477–482, <https://doi.org/10.1038/s41586-022-05447-w>, 2022.
- Prinn, R. G., Cunnold, D., Simmonds, P., Alyea, F., Boldi, R., Crawford, A., Fraser, P., Gutzler, D., Hartley, D., Rosen, R., and Rasmussen, R.: Global average concentration and trend for hydroxyl radicals deduced from ALE/GAGE trichloroethane (methyl chloroform) data for 1978–1990, *J. Geophys. Res.-Atmos.*, 97, 2445–2461, <https://doi.org/10.1029/91JD02755>, 1992.
- Prinn, R. G., Huang, J., Weiss, R. F., Cunnold, D. M., Fraser, P. J., Simmonds, P. G., McCulloch, A., Harth, C., Salameh, P., O'Doherty, S., Wang, R. H., Porter, L., and Miller, B. R.: Evidence for substantial variations of atmospheric hydroxyl radicals in the past two decades, *Science*, 292, 1882–1888, <https://doi.org/10.1126/science.1058673>, 2001.
- Prinn, R. G., Huang, J., Weiss, R. F., Cunnold, D. M., Fraser, P. J., Simmonds, P. G., McCulloch, A., Harth, C., Reimann, S., and Salameh, P.: Evidence for variability of atmospheric hydroxyl radicals over the past quarter century, *Geophys. Res. Lett.*, 32, L07809, <https://doi.org/10.1029/2004GL022228>, 2005.
- Prinn, R. G., Weiss, R. F., Arduini, J., Arnold, T., DeWitt, H. L., Fraser, P. J., Ganesan, A. L., Gasore, J., Harth, C. M., Hermansen, O., Kim, J., Krummel, P. B., Li, S., Loh, Z. M., Lunder, C. R., Maione, M., Manning, A. J., Miller, B. R., Mitrevski, B., Mühle, J., O'Doherty, S., Park, S., Reimann, S., Rigby, M., Saito, T., Salameh, P. K., Schmidt, R., Simmonds, P. G., Steele, L. P., Vollmer, M. K., Wang, R. H., Yao, B., Yokouchi, Y., Young, D., and Zhou, L.: History of chemically and radiatively important atmospheric gases from the Advanced Global Atmospheric Gases Experiment (AGAGE), *Earth Syst. Sci. Data*, 10, 985–1018, <https://doi.org/10.5194/essd-10-985-2018>, 2018.
- Rigby, M., Prinn, R. G., O'Doherty, S., Montzka, S. A., McCulloch, A., Harth, C. M., Mühle, J., Salameh, P. K., Weiss, R. F., Young, D., Simmonds, P. G., Hall, B. D., Dutton, G. S., Nance, D., Mondeel, D. J., Elkins, J. W., Krummel, P. B., Steele, L. P., and Fraser, P. J.: Re-evaluation of the lifetimes of the major CFCs and CH₃CCl₃ using atmospheric trends, *Atmos. Chem. Phys.*, 13, 2691–2702, <https://doi.org/10.5194/acp-13-2691-2013>, 2013.
- Rigby, M., Montzka, S. A., Prinn, R. G., White, J. W. C., Young, D., O'Doherty, S., Lunt, M. F., Ganesan, A. L., Manning, A. J., Simmonds, P. G., Salameh, P. K., Harth, C. M., Mühle, J., Weiss, R. F., Fraser, P. J., Steele, L. P., Krummel, P. B., McCulloch, A., and Park, S.: Role of atmospheric oxidation in recent methane growth, *P. Natl. Acad. Sci. USA*, 114, 5373–5377, <https://doi.org/10.1073/pnas.1616426114>, 2017.
- Simmonds, P. G., O'Doherty, S., Nickless, G., Sturrock, G. A., Swaby, R., Knight, P., Ricketts, J., Woffenden, G., and Smith, R.: Automated gas chromatographic/mass spectrometer for routine atmospheric field measurements of the CFC replacement compounds, the hydrofluorocarbons and hydrochlorofluorocarbons, *Anal. Chem.*, 67, 717–723, <https://doi.org/10.1021/ac00100a005>, 1995.
- Spahni, R., Wania, R., Neef, L., van Weele, M., Pison, I., Bousquet, P., Frankenberg, C., Foster, P. N., Joos, F., Prentice, I. C., and van Velthoven, P.: Constraining global methane emissions and uptake by ecosystems, *Biogeosciences*, 8, 1643–1665, <https://doi.org/10.5194/bg-8-1643-2011>, 2011.
- Spivakovsky, C. M., Logan, J. A., Montzka, S. A., Balkanski, Y. J., Foreman-Fowler, M., Jones, D. B. A., Horowitz, L. W., Fusco, A. C., Brenninkmeijer, C. A. M., and Prather, M. J.: Three-dimensional climatological distribution of tropospheric OH: Update and evaluation, *J. Geophys. Res.-Atmos.*, 105, 8931–8980, <https://doi.org/10.1029/1999JD901006>, 2000.
- Stevenson, D. S., Zhao, A., Naik, V., O'Connor, F. M., Tilmes, S., Zeng, G., Murray, L. T., Collins, W. J., Griffiths, P. T., Shim, S., Horowitz, L. W., Sentman, L. T., and Emmons, L.: Trends in global tropospheric hydroxyl radical and methane lifetime since 1850 from AerChemMIP, *Atmos. Chem. Phys.*, 20, 12905–12920, <https://doi.org/10.5194/acp-20-12905-2020>, 2020.
- Tarantola, A.: Inverse problem theory and methods for model parameter estimation, *Society for Industrial and Applied Mathematics*, ISBN 0-89871-572-5, 2005.
- Thompson, R.: AGAGE 12-box model with adjoint for optimisation of OH using hydrofluorocarbons (HFCs), Version 1, Zenodo [code], <https://zenodo.org/record/8172277> (last access: 17 January 2024), 2023.
- Thompson, R. L., Nisbet, E. G., Pisso, I., Stohl, A., Blake, D., Dlugokencky, E. J., Helmig, D., and White, J. W. C.: Variability in Atmospheric Methane From Fossil Fuel and Microbial Sources Over the Last Three Decades, *Geophys. Res. Lett.*, 45, 11499–11508, <https://doi.org/10.1029/2018GL078127>, 2018.
- Turner, A. J., Frankenberg, C., Wennberg, P. O., and Jacob, D. J.: Ambiguity in the causes for decadal trends in atmospheric methane and hydroxyl, *P. Natl. Acad. Sci. USA*, 114, 5367–5372, <https://doi.org/10.1073/pnas.1616020114>, 2017.

- Turner, A. J., Frankenberg, C., and Kort, E. A.: Interpreting contemporary trends in atmospheric methane, *P. Natl. Acad. Sci. USA*, 116, 2805–2813, <https://doi.org/10.1073/pnas.1814297116>, 2019.
- van der Werf, G. R., Randerson, J. T., Giglio, L., van Leeuwen, T. T., Chen, Y., Rogers, B. M., Mu, M., van Marle, M. J. E., Morton, D. C., Collatz, G. J., Yokelson, R. J., and Kasibhatla, P. S.: Global fire emissions estimates during 1997–2016, *Earth Syst. Sci. Data*, 9, 697–720, <https://doi.org/10.5194/essd-9-697-2017>, 2017 (data available at: <https://www.geo.vu.nl/~gwerf/GFED/GFED4/>, last access: 20 July 2023).
- Velders, G. J. M., Daniel, J. S., Montzka, S. A., Vimont, I., Rigby, M., Krummel, P. B., Muhle, J., O'Doherty, S., Prinn, R. G., Weiss, R. F., and Young, D.: Projections of hydrofluorocarbon (HFC) emissions and the resulting global warming based on recent trends in observed abundances and current policies, *Atmos. Chem. Phys.*, 22, 6087–6101, <https://doi.org/10.5194/acp-22-6087-2022>, 2022.
- Vollmer, M. K., Miller, B. R., Rigby, M., Reimann, S., Mühle, J., Krummel, P. B., O'Doherty, S., Kim, J., Rhee, T. S., Weiss, R. F., Fraser, P. J., Simmonds, P. G., Salameh, P. K., Harth, C. M., Wang, R. H. J., Steele, L. P., Young, D., Lunder, C. R., Hermansen, O., Ivy, D., Arnold, T., Schmidbauer, N., Kim, K., Grealley, B. R., Hill, M., Leist, M., Wenger, A., and Prinn, R. G.: Atmospheric histories and global emissions of the anthropogenic hydrofluorocarbons HFC-365mfc, HFC-245fa, HFC-227ea, and HFC-236fa, *J. Geophys. Res.-Atmos.*, 116, D08304, <https://doi.org/10.1029/2010JD015309>, 2011.
- Voulgarakis, A., Naik, V., Lamarque, J.-F., Shindell, D. T., Young, P. J., Prather, M. J., Wild, O., Field, R. D., Bergmann, D., Cameron-Smith, P., Cionni, I., Collins, W. J., Dalsøren, S. B., Doherty, R. M., Eyring, V., Faluvegi, G., Folberth, G. A., Horowitz, L. W., Josse, B., MacKenzie, I. A., Nagashima, T., Plummer, D. A., Righi, M., Rumbold, S. T., Stevenson, D. S., Strode, S. A., Sudo, K., Szopa, S., and Zeng, G.: Analysis of present day and future OH and methane lifetime in the ACCMIP simulations, *Atmos. Chem. Phys.*, 13, 2563–2587, <https://doi.org/10.5194/acp-13-2563-2013>, 2013.
- Weber, T.: ocean_ch4.nc, figshare [data set], <https://doi.org/10.6084/m9.figshare.9034451.v1>, 2019.
- Weber, T., Wiseman, N. A., and Kock, A.: Global ocean methane emissions dominated by shallow coastal waters, *Nat. Commun.*, 10, 4584, <https://doi.org/10.1038/s41467-019-12541-7>, 2019.
- Wennberg, P. O., Peacock, S., Randerson, J. T., and Bleck, R.: Recent changes in the air-sea gas exchange of methyl chloroform, *Geophys. Res. Lett.*, 31, L16112, <https://doi.org/10.1029/2004gl020476>, 2004.
- Wild, O., Voulgarakis, A., O'Connor, F., Lamarque, J.-F., Ryan, E. M., and Lee, L.: Global sensitivity analysis of chemistry–climate model budgets of tropospheric ozone and OH: exploring model diversity, *Atmos. Chem. Phys.*, 20, 4047–4058, <https://doi.org/10.5194/acp-20-4047-2020>, 2020.
- Zhao, Y., Saunio, M., Bousquet, P., Lin, X., Berchet, A., Hegglin, M. I., Canadell, J. G., Jackson, R. B., Deushi, M., Jöckel, P., Kinnison, D., Kirner, O., Strode, S., Tilmes, S., Dlugokencky, E. J., and Zheng, B.: On the role of trend and variability in the hydroxyl radical (OH) in the global methane budget, *Atmos. Chem. Phys.*, 20, 13011–13022, <https://doi.org/10.5194/acp-20-13011-2020>, 2020.