



*Supplement of*

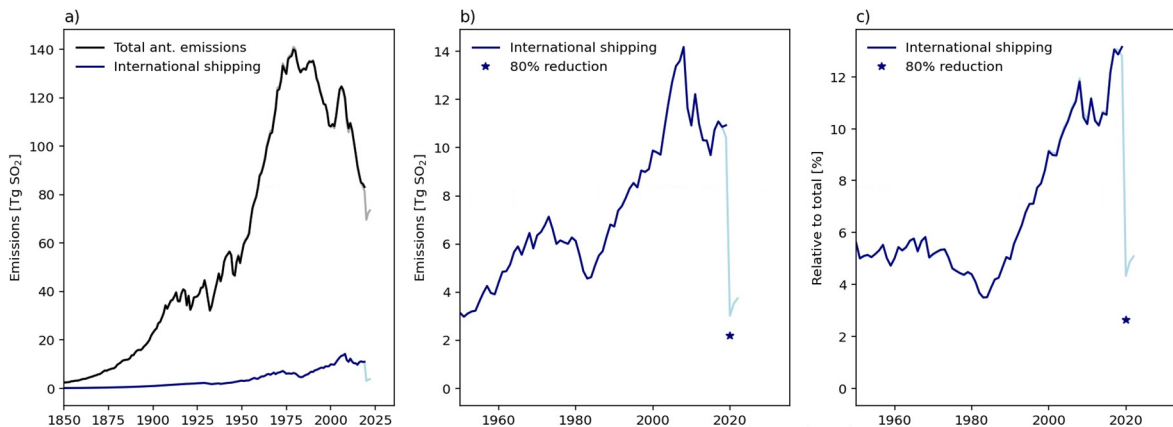
## **Multi-model effective radiative forcing of the 2020 sulfur cap for shipping**

**Ragnhild Bieltvedt Skeie et al.**

*Correspondence to:* Ragnhild Bieltvedt Skeie (r.b.skeie@cicero.oslo.no)

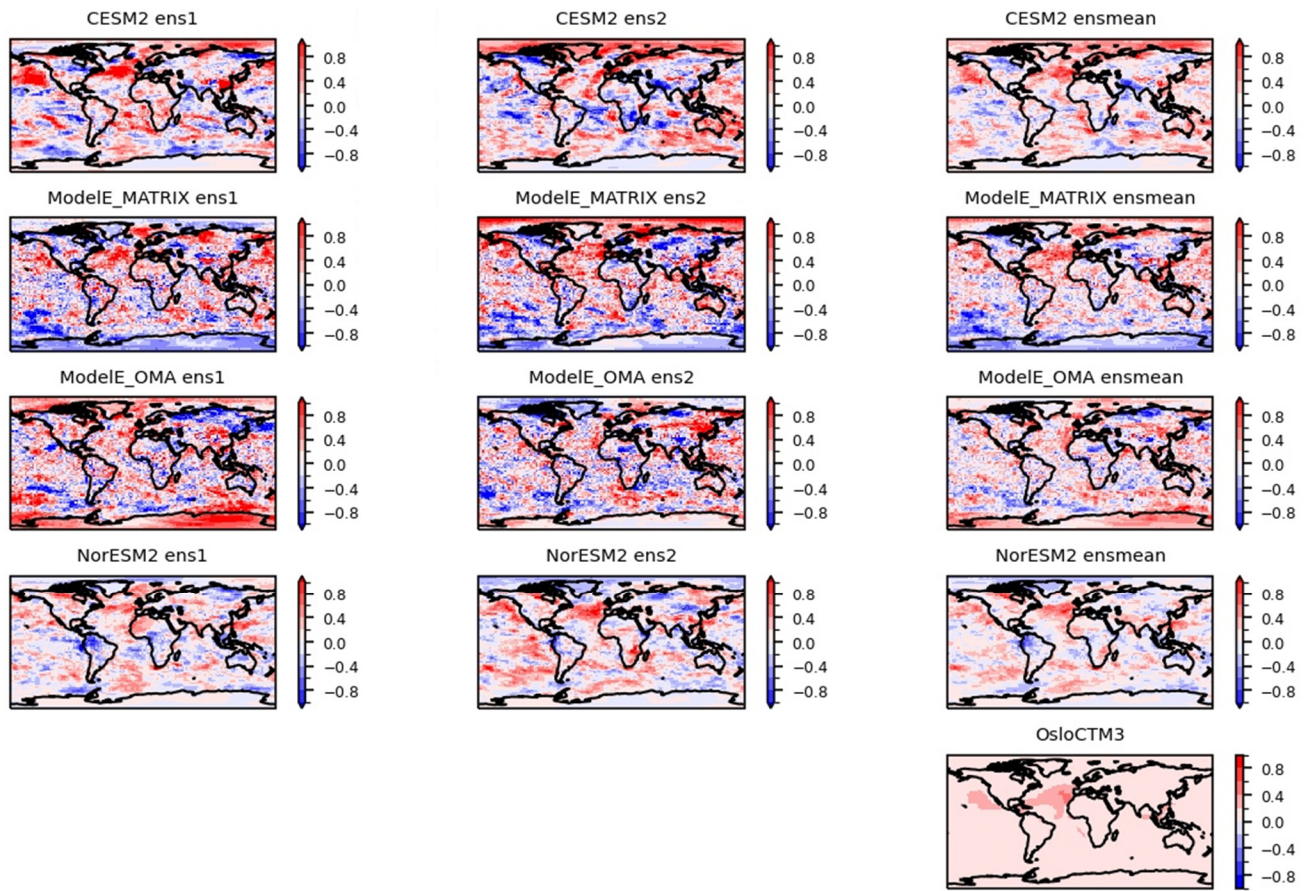
The copyright of individual parts of the supplement might differ from the article licence.

## Supplementary figures

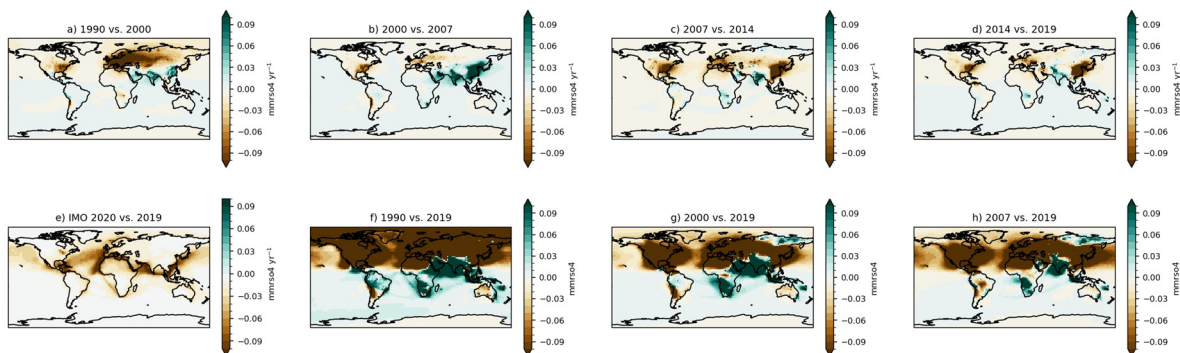


5 **Figure S1: Historical emissions of SO<sub>2</sub> from CEDS (O'Rourke et al., 2021). In a) the total anthropogenic emissions and emissions from international shipping from 1850 to 2019 from CEDS\_v2021 (black and blue line) and extended to 2022 from CEDS\_v2024\_04\_01 (Hoesly and Smith, 2024) (gray and lightblue line), b) emissions from international shipping from 1950 to 2019 from CEDS\_v2021 (blue line) in addition to a star that indicate an 80% reduction in emissions in 2020 compared to 2019. CEDS\_v2024\_04\_01 extending to 2022 shown in lightblue. In c) same as b) but presented as percentages of total anthropogenic emissions.**

10



15 Figure S2: ERF for each ensemble member (left and middle column) and ensemble mean (right column) due to IMO2020. For OsloCTM3 the total aerosol RF ( $RF_{\text{ari}} + RF_{\text{aci}}$ ) is shown (right column).



20 **Figure S3: Absolute difference in SO<sub>4</sub> mass mixing ratio in the surface layer as simulated by OsloCTM3. In a) to d) the difference in mmr per year between historical OsloCTM3 simulations with anthropogenic emissions for the years given in the sub-titles. These simulations are driven by fixed meteorological data and described in Skeie et al. (2023). In a) CEDS emissions as provided for CMIP6 are used, and in b) to d) CEDS\_v2021 emissions. In e) the absolute difference between the two simulations with and without IMO2020. In f) to g) the absolute difference between 2019 and 1990, 2000 and 2007 simulations respectively.**

## 25 References

Hoesly, R., and Smith, S. CEDS v\_2024\_04\_01 Release Emission Data (v\_2024\_04\_01) <https://doi.org/10.5281/zenodo.10904361> (2024).

30 O'Rourke, Patrick R, Smith, S. J., Mott, A., Ahsan, H., McDuffie, Erin E, Crippa, Monica, Klimont, Zbigniew, McDonald, Brian, W., Shuxiao, N., Matthew B, Feng, L., and Hoesly, R. M. CEDS v\_2021\_04\_21 Release Emission Data (v\_2021\_02\_05) <https://doi.org/10.5281/zenodo.4741285> (2021).

Skeie, R. B., Hodnebrog, Ø., and Myhre, G.: Trends in atmospheric methane concentrations since 1990 were driven and modified by anthropogenic emissions, *Communications Earth & Environment*, 4,317, 10.1038/s43247-023-00969-1, 2023.