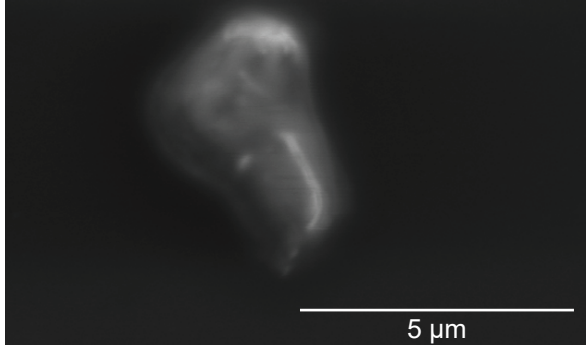
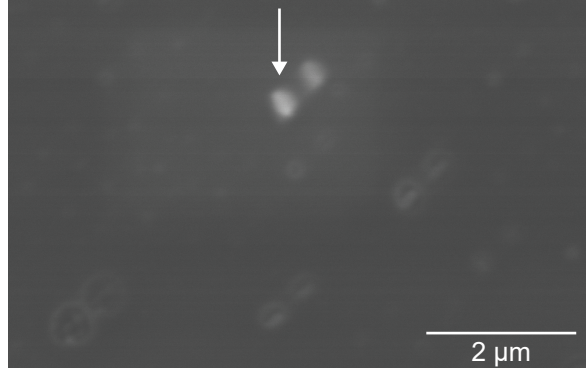


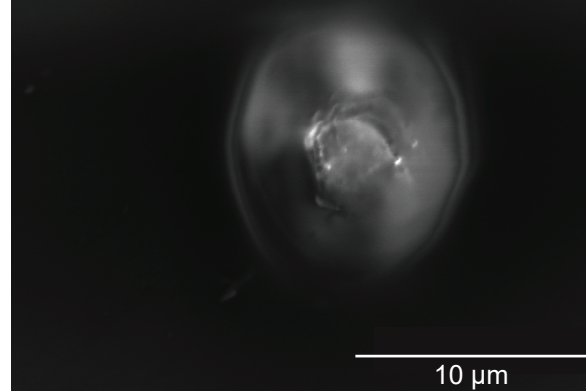
S-FT1 -40 °C  
Sea Salt



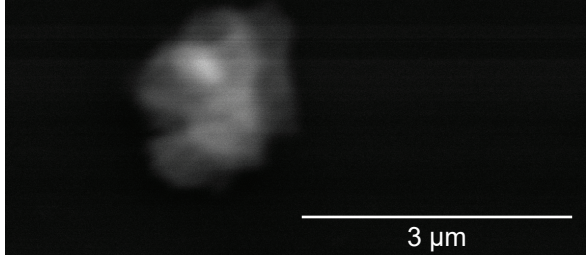
W-FT1-DI -50 °C  
Sea Salt + Sulfate



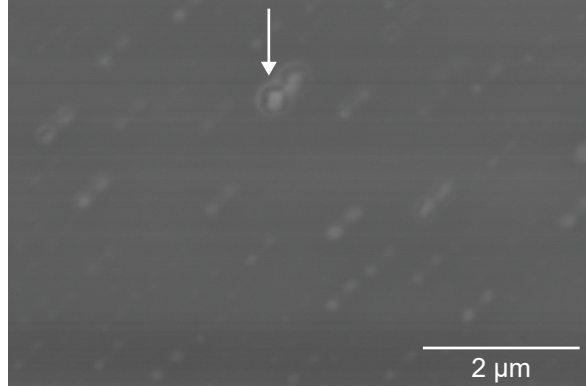
W-FT3-DI -50 °C  
Carbonaceous



S-FT1 -40 °C  
Sea Salt



W-FT1-DI -50 °C  
Sea Salt + Sulfate



W-FT3-DI -50 °C  
Carbonaceous

