



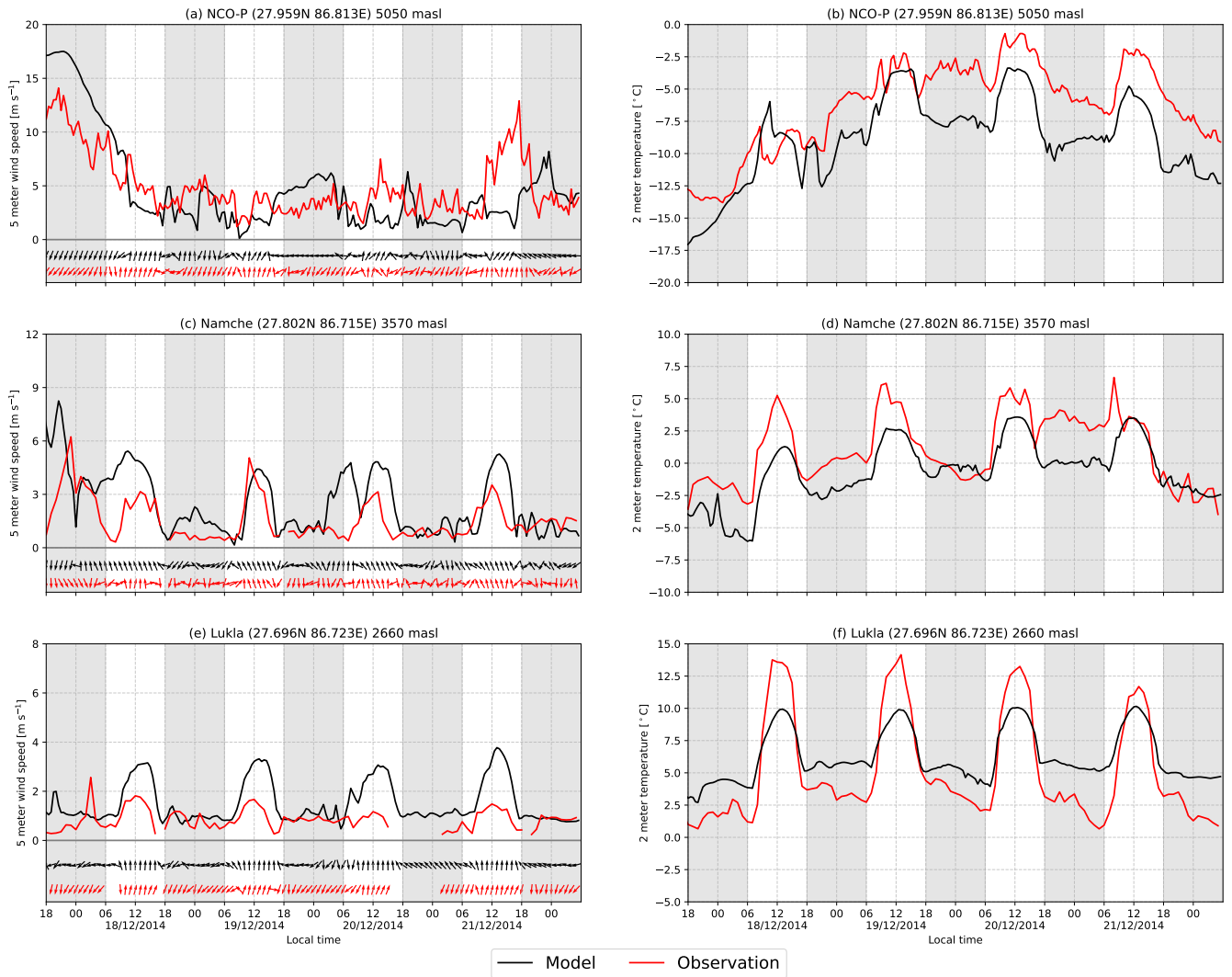
*Supplement of*

## **Daytime along-valley winds in the Himalayas as simulated by the Weather Research and Forecasting (WRF) model**

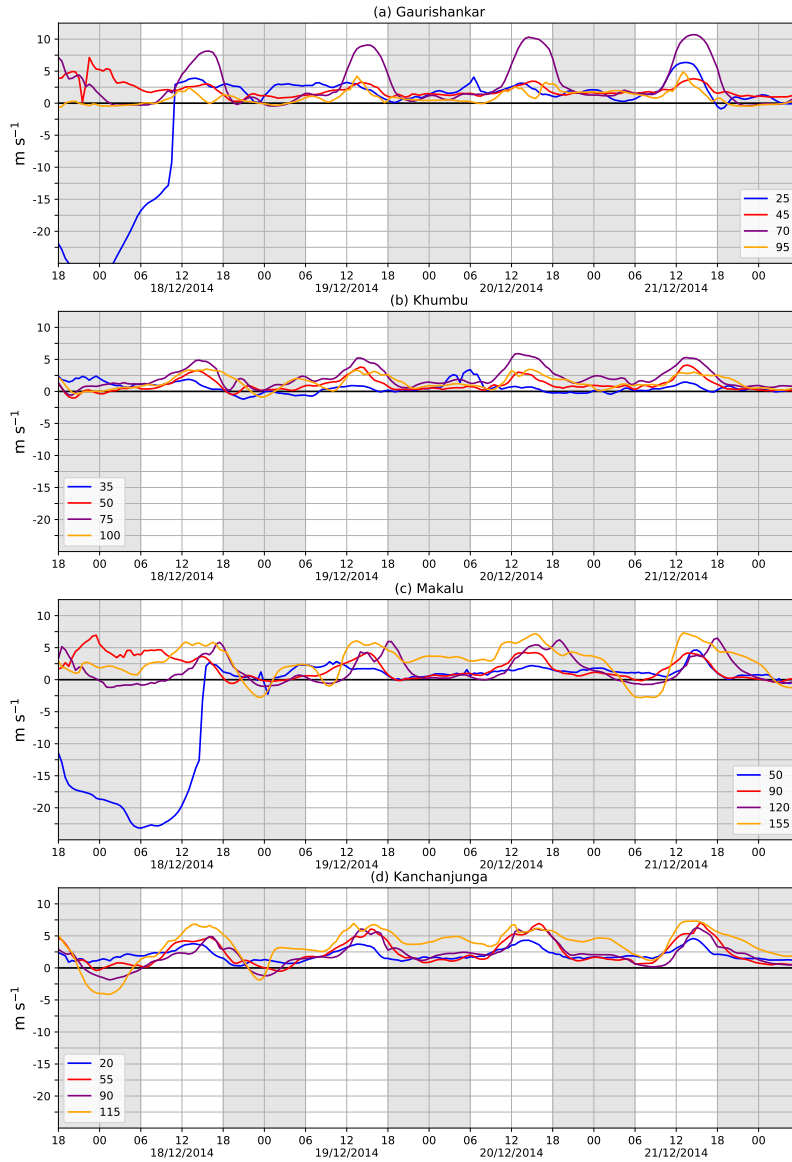
**Johannes Mikkola et al.**

*Correspondence to:* Johannes Mikkola ([johannes.mikkola@helsinki.fi](mailto:johannes.mikkola@helsinki.fi))

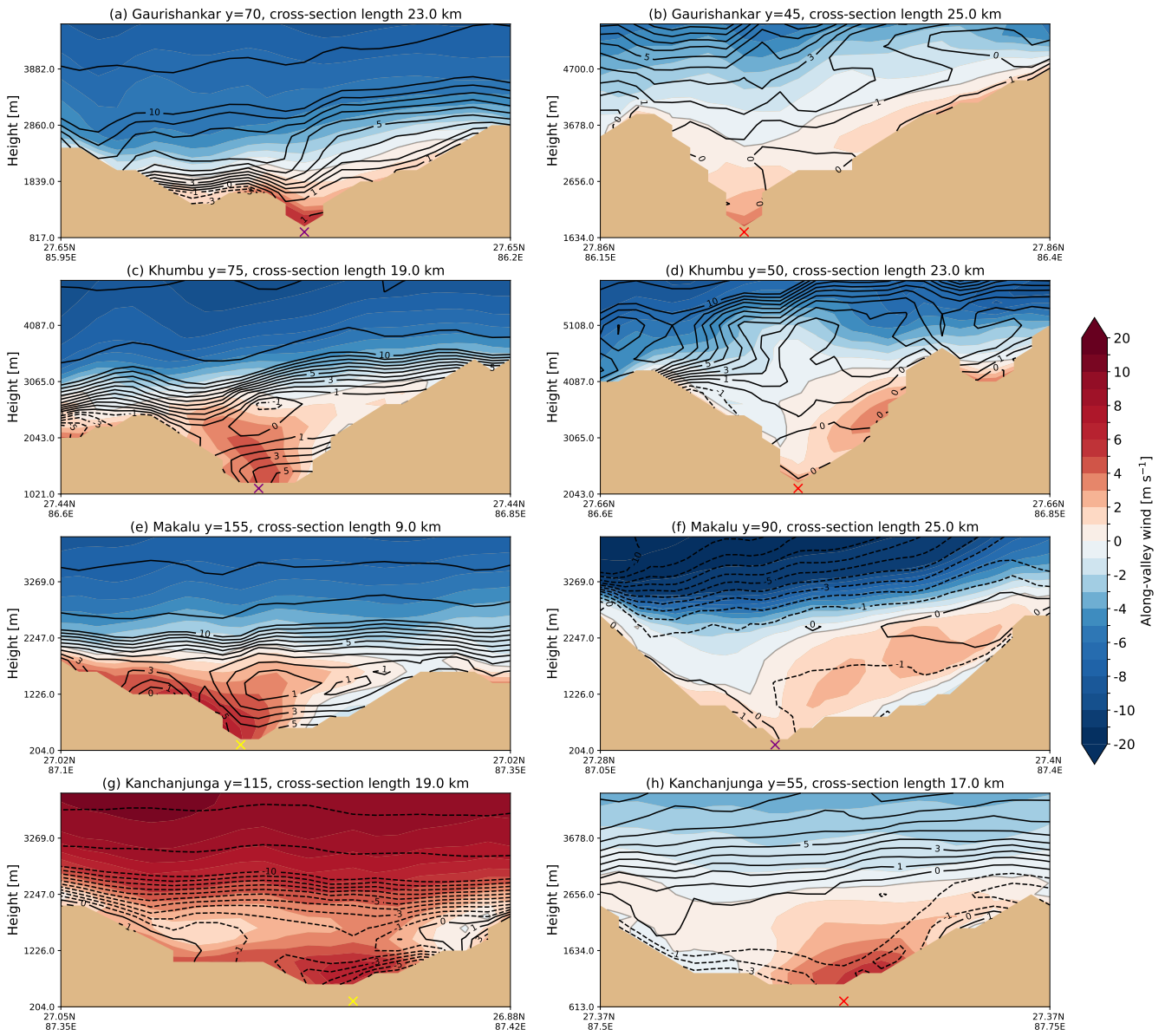
The copyright of individual parts of the supplement might differ from the article licence.



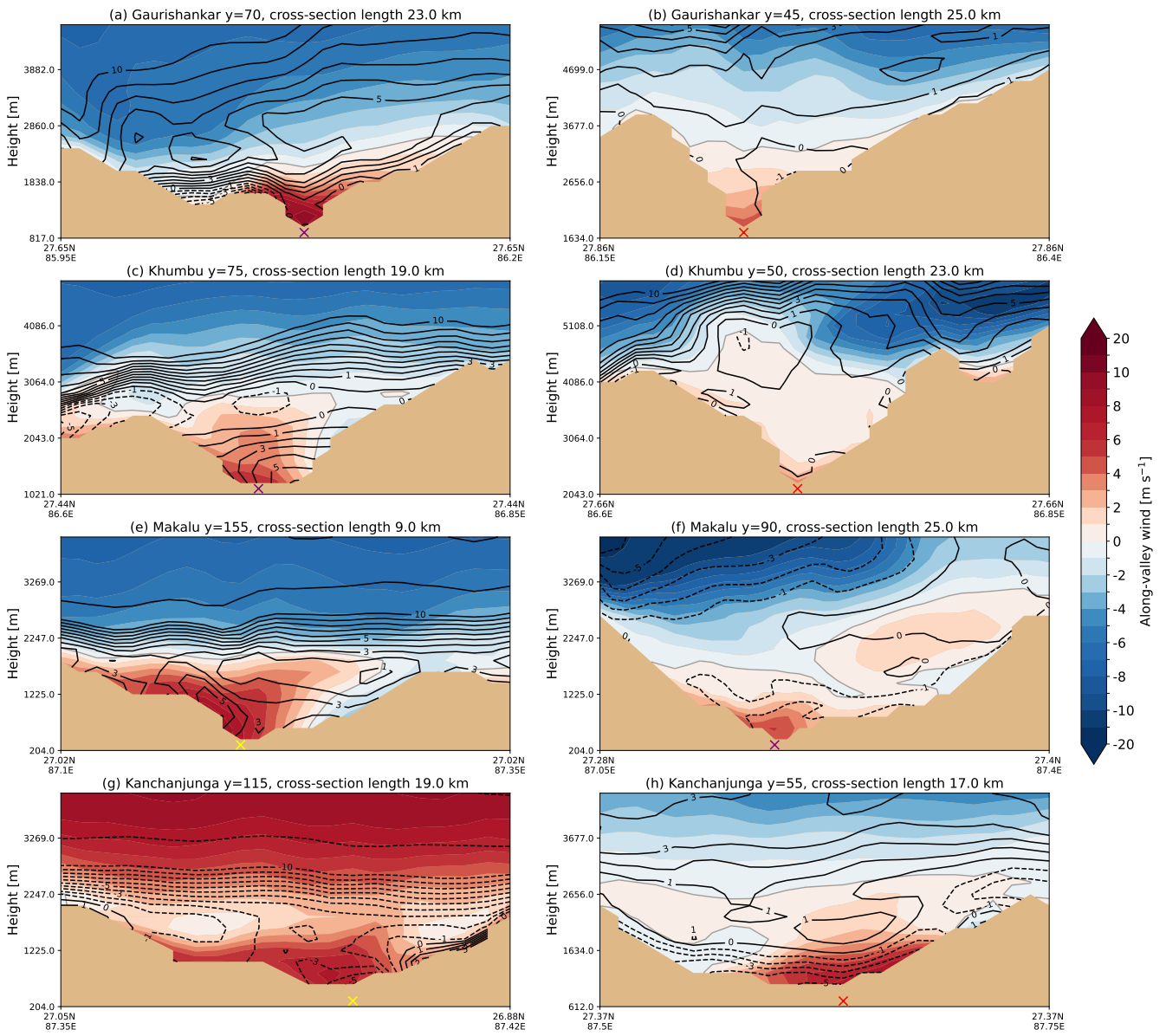
**Figure S1.** Timeseries of modelled and observed 5 meter wind and 2 meter temperature in (a-b) NCO-P (c-d) Namche (e-f) Lukla. Note different y-scales in panel (a), (c) and (e).



**Figure S2.** Same as Fig. 6 but y-scale extended showing the minimum values. See Fig. 6 for full caption.



**Figure S3.** Cross-valley cross-sections of along-valley wind velocity (shaded) and cross-valley wind velocity (black contour) without use of any along-valley averaging at 12 local time on 20 December 2014. Positive (negative) along-valley wind component refer to up-valley (down-valley), hence wind vector pointed towards (outwards of) the figure. Positive (negative) cross-valley wind components marked on solid (dashed) contours refer to rightward (leftward) wind in the cross-section. Coordinates of both ends of the cross-sections shown on x-axis. The cross-sections are in each location perpendicular to the valley center line (yellow lines in Fig. 2b). Two locations of each valley selected from the 4 along-valley locations shown on crosses in Fig. 2b. y-value in each sub-figure title show the along-valley location on the valley center line and the cross mark the location of the valley center line in the cross-section.



**Figure S4.** Same as Figure S3 but for 15 local time 20 December 2014.