



Supplement of

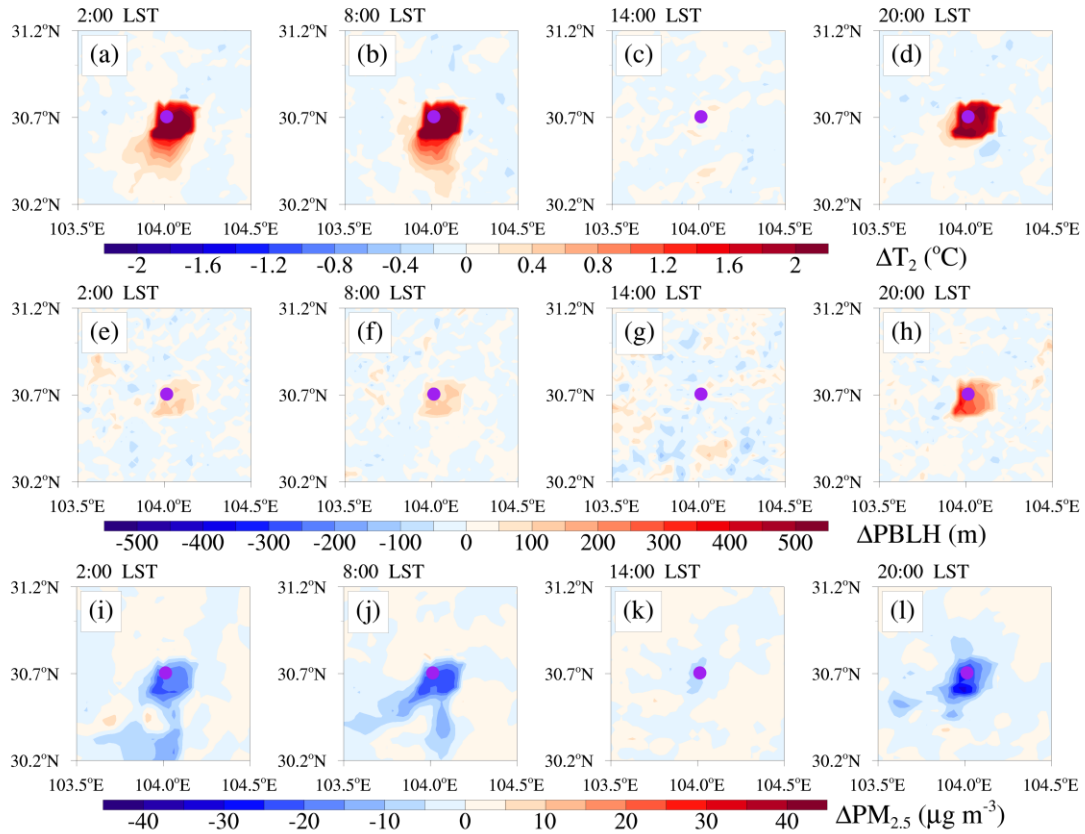
Impacts of urbanization on air quality and the related health risks in a city with complex terrain

Chenchao Zhan et al.

Correspondence to: Min Xie (minxie@nju.edu.cn)

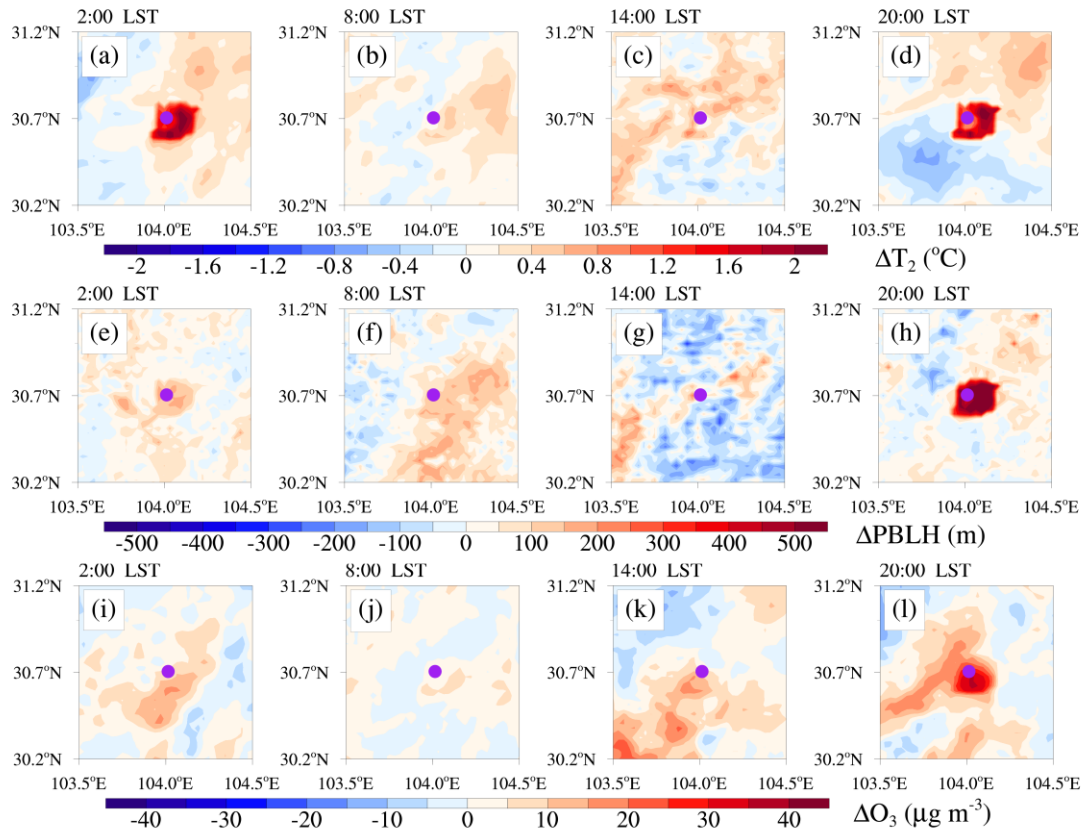
The copyright of individual parts of the supplement might differ from the article licence.

1 This supporting information is composed of the differences of air temperature, boundary layer
2 height, surface PM_{2.5} concentrations (Figure S1) and surface O₃ concentrations (Figure S2) owing
3 to urban expansion.
4



5
6 **Figure S1. Horizontal distributions of differences in (a-d) 2 m air temperature, (e-h) boundary**
7 **layer height and (i-j) PM_{2.5} concentrations at 2:00, 8:00, 14:00 and 20:00 LST between**
8 **Jan_Base and Jan_noCD (Jan_Base – Jan_noCD). The purple dots represent the locations of**
9 **Chengdu.**

10



11

12 **Figure S2. Horizontal distributions of differences in (a-d) 2 m air temperature, (e-h) boundary**
 13 **layer height and (i-j) O₃ concentrations at 2:00, 8:00, 14:00 and 20:00 LST between Jan_Base**
 14 **and Jan_noCD (Jan_Base – Jan_noCD). The purple dots represent the locations of Chengdu.**

15